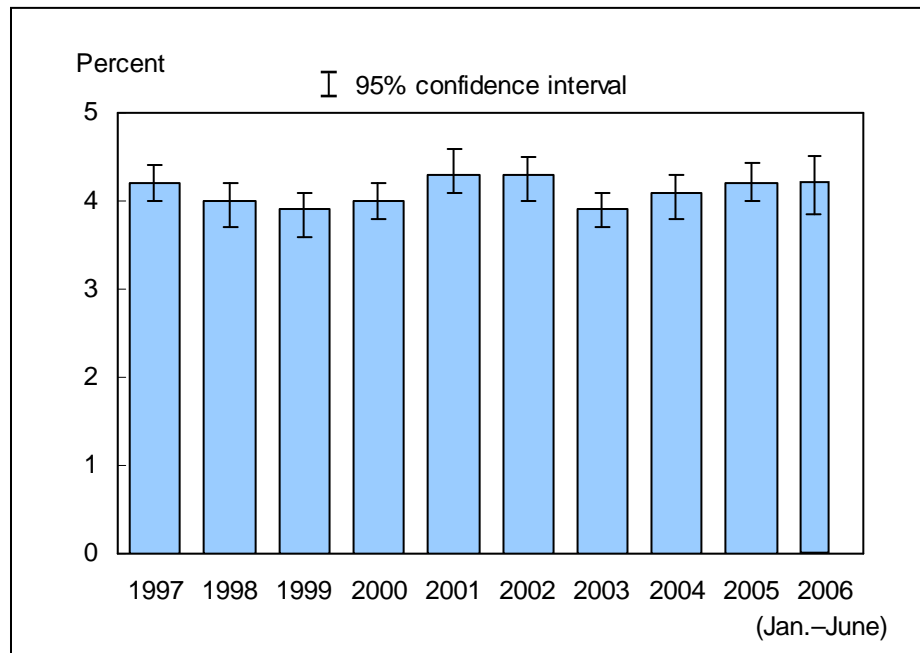


**Figure 15.1. Percentage of persons of all ages who experienced an asthma episode in the past 12 months: United States, 1997–June 2006**



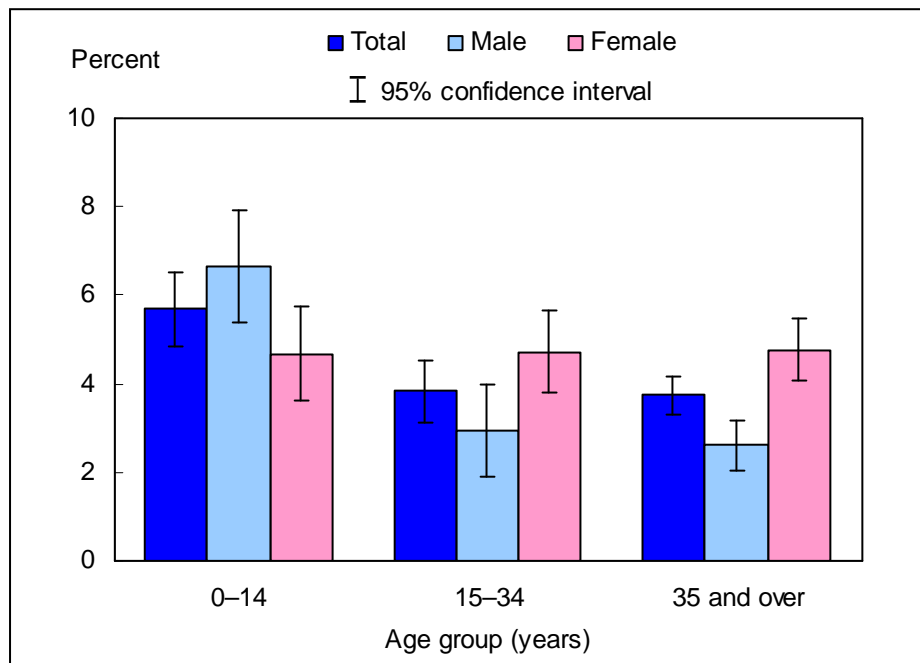
NOTES: Information on an episode of asthma or asthma attack during the past 12 months is self-reported by adults aged 18 years and over. For children under age 18 years, the information is collected from an adult family member, usually a parent, who is knowledgeable about the child's health. The analyses excluded people with unknown asthma episode status (about 0.3% of respondents each year). Beginning with the 2003 data, the National Health Interview Survey (NHIS) transitioned to weights derived from the 2000 census. In this Early Release, estimates for 2000–2002 were recalculated using weights derived from the 2000 census. See "About This Release" and Table III in the Appendix for more details.

DATA SOURCE: Combined Sample Adult and Sample Child Core components of the 1997–2006 NHIS. The estimate for 2006 was based on data collected from January through June. Data are based on household interviews of a sample of the civilian noninstitutionalized population.

■ For the period January through June 2006, the percentage of persons of all ages who experienced an asthma episode in the past 12 months was 4.2% (95% confidence interval = 3.81–4.53%), which did not differ from the 2005 estimate of 4.2%.

■ The annual percentage of persons of all ages who experienced an asthma episode in the past 12 months was 4.2% in 1997, 4.0% in 1998, 3.9% in 1999, 4.0% in 2000, 4.3% in 2001, 4.3% in 2002, 3.9% in 2003, 4.1% in 2004, and 4.2% in 2005.

**Figure 15.2. Percentage of persons of all ages who experienced an asthma episode in the past 12 months, by age group and sex: United States, January–June 2006**

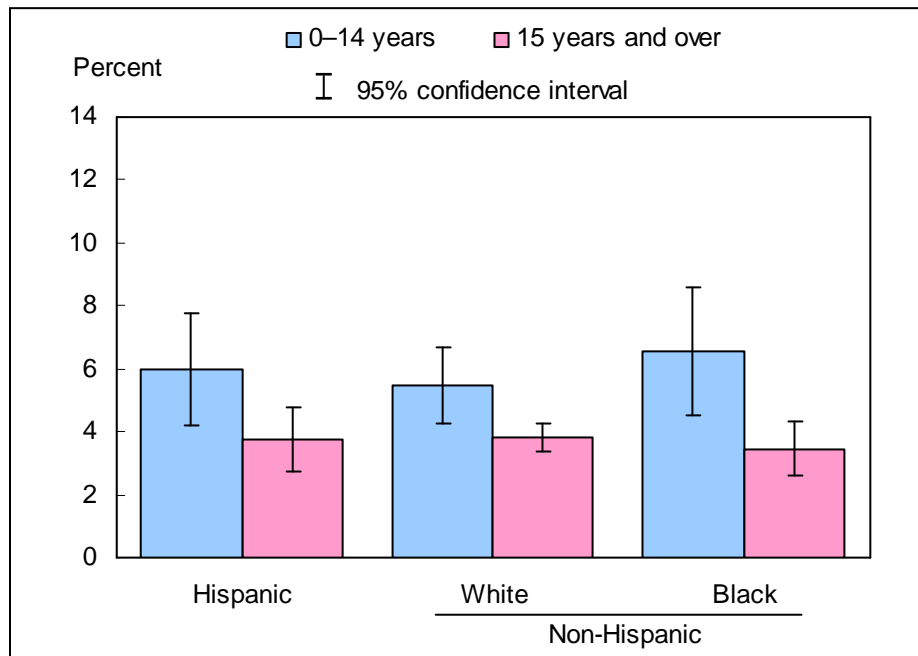


NOTES: Information on an episode of asthma or asthma attack during the past 12 months is self-reported by adults aged 18 years and over. For children under age 18 years, the information is collected from an adult family member, usually a parent, who is knowledgeable about the child's health. The analyses excluded 36 persons (0.2%) with unknown asthma episode status.

DATA SOURCE: Based on data collected from January through June in the Sample Adult and Sample Child Core components of the 2006 National Health Interview Survey. Data are based on household interviews of a sample of the civilian noninstitutionalized population.

- For both sexes combined, the percentage of persons who had an asthma episode in the past 12 months was higher among children under age 15 years than among persons aged 15–34 years and 35 years and over. This age difference was seen among males, but not among females.
- For children under age 15 years, the percentage of persons who had an asthma episode in the past 12 months was higher among boys than among girls. However, for age groups 15–34 years and 35 years and over, the percentage was higher among females than among males.

**Figure 15.3. Sex-adjusted percentage of persons of all ages who experienced an asthma episode in the past 12 months, by age group and race/ethnicity: United States, January–June 2006**



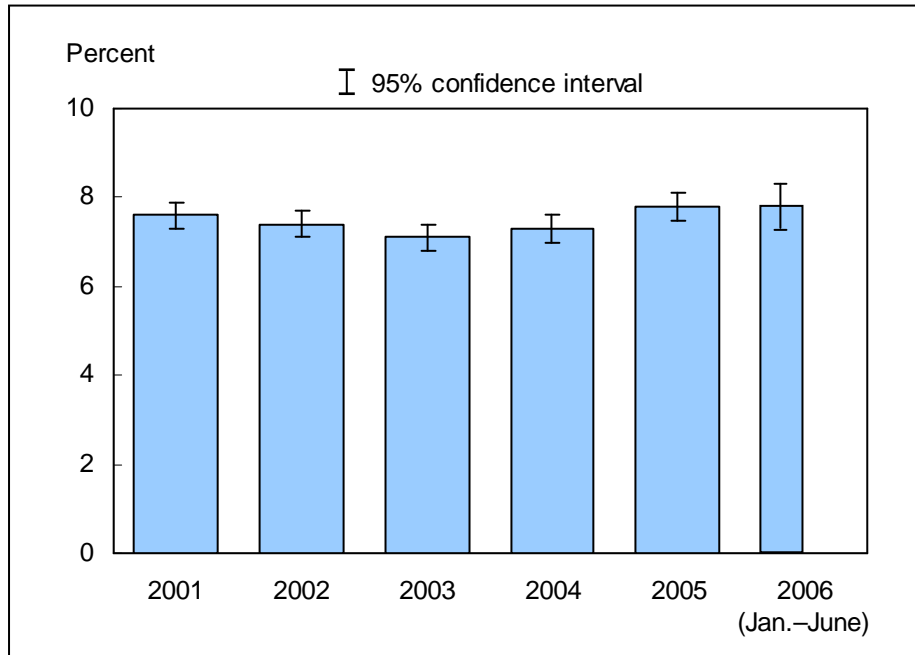
NOTES: Information on an episode of asthma or asthma attack during the past 12 months is self-reported by adults aged 18 years and over. For children under age 18 years, the information is collected from an adult family member, usually a parent, who is knowledgeable about the child's health. The analyses excluded 36 persons (0.2%) with unknown asthma episode status.

DATA SOURCE: Based on data collected from January through June in the Sample Adult and Sample Child Core components of the 2006 National Health Interview Survey. Data are based on household interviews of a sample of the civilian noninstitutionalized population.

■ For children under age 15 years, the sex-adjusted percentage of persons who had an asthma episode in the past 12 months was similar among the three race/ethnicity groups.

■ For persons aged 15 years and over, the sex-adjusted percentage of persons who had an asthma episode in the past 12 months was similar among the three race/ethnicity groups.

**Figure 15.4. Prevalence of current asthma among persons of all ages: United States, 2001–June 2006**

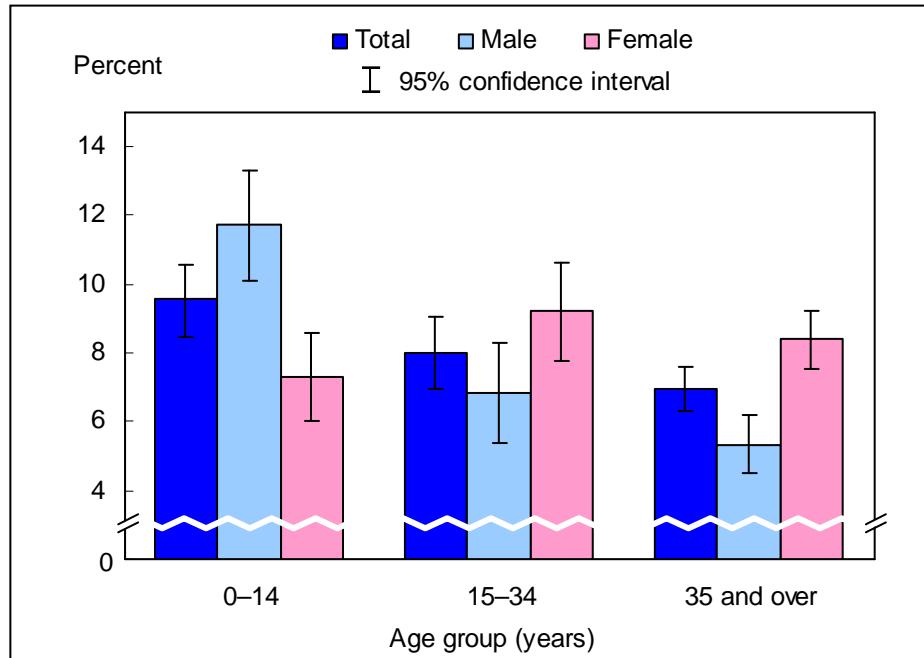


NOTES: Beginning in 2001, respondents were asked about current asthma in addition to the question regarding asthma episodes. Information on current asthma is self-reported by adults aged 18 years and over. For children under age 18 years, the information is collected from an adult family member, usually a parent, who is knowledgeable about the child's health. The analyses excluded people with unknown current asthma status (about 0.3% of respondents each year). Beginning with the 2003 data, the National Health Interview Survey (NHIS) transitioned to weights derived from the 2000 census. In this Early Release, estimates for 2001–02 were recalculated using weights derived from the 2000 census. See "About This Release" and Table III in the Appendix for more details.

DATA SOURCE: Combined Sample Adult and Sample Child Core components of the 2001–06 NHIS. The estimate for 2006 was based on data collected from January through June. Data are based on household interviews of a sample of the civilian noninstitutionalized population.

- For the period January through June 2006, 7.8% (95% confidence interval = 7.27–8.30%) of persons of all ages currently had asthma, which was the same as the 2005 estimate of 7.8%.
- The annual prevalence of current asthma among persons of all ages was 7.6% in 2001, 7.4% in 2002, 7.1% in 2003, 7.3% in 2004, and 7.8% in 2005.

**Figure 15.5. Prevalence of current asthma among persons of all ages, by age group and sex: United States, January–June 2006**

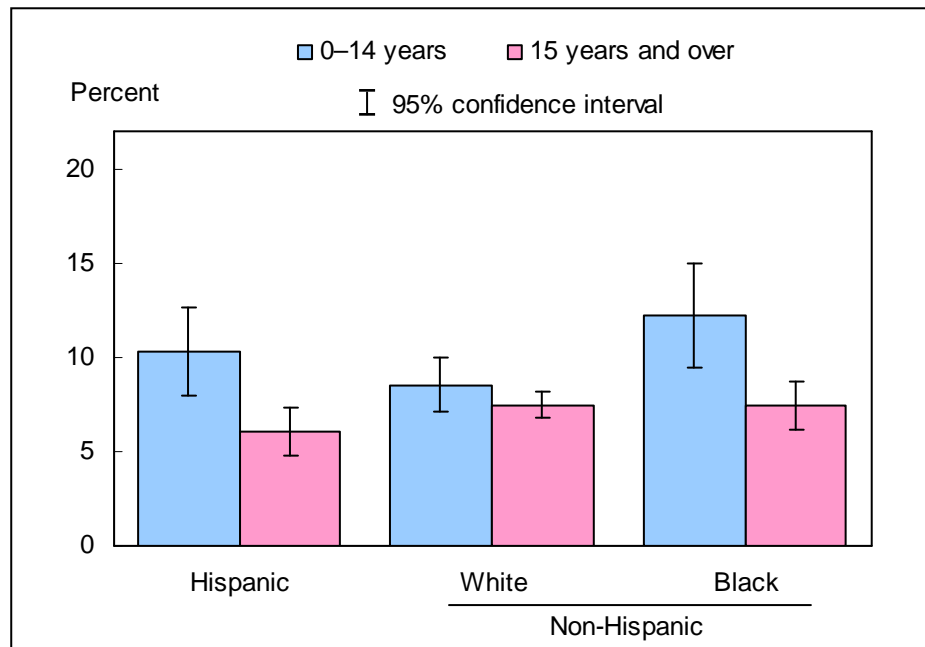


NOTES: Information on current asthma is self-reported by adults aged 18 years and over. For children under age 18 years, the information is collected from an adult family member, usually a parent, who is knowledgeable about the child's health. The analyses excluded 57 persons (0.3%) with unknown current asthma status.

DATA SOURCE: Based on data collected from January through June in the Sample Adult and Sample Child Core components of the 2006 National Health Interview Survey. Data are based on household interviews of a sample of the civilian noninstitutionalized population.

- For both sexes combined, the prevalence of current asthma was higher among children 0–14 years old than among adults aged 35 years and over. This pattern was seen among males, but not females.
- For children under age 15 years, the prevalence of current asthma was higher among boys than among girls. However, for age groups 15–34 years and 35 years and over, the prevalence of current asthma was higher among females than among males.

**Figure 15.6. Sex-adjusted prevalence of current asthma among persons of all ages, by age group and race/ethnicity: United States, January–June 2006**



NOTES: Information on current asthma is self-reported by adults aged 18 years and over. For children under age 18 years, the information is collected from an adult family member, usually a parent, who is knowledgeable about the child's health. The analyses excluded 57 persons (0.3%) with unknown current asthma status.

DATA SOURCE: Based on data collected from January through June in the Sample Adult and Sample Child Core components of the 2006 National Health Interview Survey. Data are based on household interviews of a sample of the civilian noninstitutionalized population.

- For children under age 15 years, the sex-adjusted prevalence of current asthma was higher among non-Hispanic black children than among non-Hispanic white children.
- For persons aged 15 years and over, the sex-adjusted prevalence of current asthma was similar among the three race/ethnicity groups.

## Data tables for figures 15.1–15.6:

**Data table for figure 15.1. Percentage of persons of all ages who experienced an asthma episode in the past 12 months: United States, 1997–June 2006**

Year	Percent (95% confidence interval)	
	Crude <sup>1</sup>	Age-adjusted <sup>2</sup>
<b>1997</b>	4.2 (4.0-4.4)	4.2 (3.9-4.4)
<b>1998</b>	4.0 (3.7-4.2)	3.9 (3.7-4.2)
<b>1999</b>	3.9 (3.6-4.1)	3.9 (3.6-4.1)
<b>2000</b>	4.0 (3.8-4.2)	4.0 (3.8-4.2)
<b>2001</b>	4.3 (4.1-4.6)	4.3 (4.1-4.5)
<b>2002</b>	4.3 (4.0-4.5)	4.3 (4.0-4.5)
<b>2003</b>	3.9 (3.7-4.1)	3.9 (3.7-4.1)
<b>2004</b>	4.1 (3.8-4.3)	4.1 (3.8-4.3)
<b>2005</b>	4.2 (3.99-4.43)	4.2 (4.00-4.44)
<b>January-June 2006</b>	4.2 (3.81-4.53)	4.2 (3.82-4.55)

<sup>1</sup>Crude estimates are presented in the figure.

<sup>2</sup>Estimates are age adjusted using the projected 2000 U.S. population as the standard population using three age groups: 0–14 years, 15–34 years, and 35 years and over.

NOTES: Beginning with the 2003 data, the National Health Interview Survey (NHIS) transitioned to weights derived from the 2000 census. In this Early Release, estimates for 2000–2002 were recalculated using weights derived from the 2000 census. See “About This Release” and Table III in the Appendix for more details.

DATA SOURCE: NHIS, 1997–June 2006. Data are based on household interviews of a sample of the civilian noninstitutionalized population.

**Data table for figure 15.2. Percentage of persons of all ages who experienced an asthma episode in the past 12 months, by age group and sex: United States, January–June 2006**

Age and sex	Percent	95% confidence interval
<b>0–14 years</b>		
Total	5.7	4.85-6.52
Male	6.6	5.39-7.90
Female	4.7	3.63-5.73
<b>15–34 years</b>		
Total	3.8	3.13-4.53
Male	2.9	1.91-3.98
Female	4.7	3.79-5.67
<b>35 years and over</b>		
Total	3.7	3.31-4.18
Male	2.6	2.05-3.16
Female	4.8	4.05-5.48
<b>All ages: crude<sup>1</sup></b>		
Total	4.2	3.81-4.53
Male	3.6	3.06-4.09
Female	4.7	4.23-5.25
<b>All ages: age-adjusted<sup>2</sup></b>		
Total	4.2	3.82-4.55
Male	3.6	3.06-4.08
Female	4.7	4.22-5.25

<sup>1</sup>Crude estimates are presented in the figure.

<sup>2</sup>Estimates are age adjusted using the projected 2000 U.S. population as the standard population using three age groups: 0–14 years, 15–34 years, and 35 years and over.

DATA SOURCE: National Health Interview Survey, January–June 2006. Data are based on household interviews of a sample of the civilian noninstitutionalized population.

**Data table for figure 15.3. Sex-adjusted percentage of persons of all ages who experienced an asthma episode in the past 12 months, by age group and race/ethnicity: United States, January–June 2006**

Age and race/ethnicity	Percent <sup>1</sup>	95% confidence interval
<b>0–14 years</b>		
Hispanic or Latino	6.0	4.21-7.78
Not Hispanic or Latino:		
White, single race	5.5	4.25-6.68
Black, single race	6.6	4.50-8.62
<b>15 years and over</b>		
Hispanic or Latino	3.7	2.71-4.77
Not Hispanic or Latino:		
White, single race	3.8	3.37-4.28
Black, single race	3.4	2.59-4.30

<sup>1</sup>Estimates are sex adjusted using the projected 2000 U.S. population as the standard population.

DATA SOURCE: National Health Interview Survey, January–June 2006. Data are based on household interviews of a sample of the civilian noninstitutionalized population.



**Data for figure 15.4. Prevalence of current asthma among persons of all ages: United States, 2001–2006**

Year	Percent (95% confidence interval)	
	Crude <sup>1</sup>	Age-adjusted <sup>2</sup>
<b>2001</b>	7.6 (7.3-7.9)	7.6 (7.3-7.9)
<b>2002</b>	7.4 (7.1-7.7)	7.4 (7.1-7.7)
<b>2003</b>	7.1 (6.8-7.4)	7.1 (6.8-7.4)
<b>2004</b>	7.3 (7.0-7.6)	7.3 (7.1-7.7)
<b>2005</b>	7.8 (7.50-8.10)	7.8 (7.51-8.11)
<b>January-June 2006</b>	7.8 (7.27-8.30)	7.8 (7.29-8.32)

<sup>1</sup>Crude estimates are presented in the figure.

<sup>2</sup>Estimates are age adjusted using the projected 2000 U.S. population as the standard population using three age groups: 0–14 years, 15–34 years, and 35 years and over.

NOTES: Beginning in 2001, respondents were asked about current asthma in addition to the question regarding asthma episodes. Beginning with 2003 data, the National Health Interview Survey (NHIS) transitioned to weights derived from the 2000 census. In this Early Release, estimates for 2000–2002 were recalculated using weights derived from the 2000 census. See “About This Release” and Table III in the Appendix for more details.

DATA SOURCE: NHIS, 2001–June 2006. Data are based on household interviews of a sample of the civilian noninstitutionalized population.

**Data table for figure 15.5. Prevalence of current asthma among persons of all ages, by age group and sex: United States, January–June 2006**

Age and sex	Percent	95% confidence interval
<b>0–14 years</b>		
Total	9.6	8.53-10.59
Male	11.7	10.15-13.30
Female	7.3	6.01-8.57
<b>15–34 years</b>		
Total	8.0	6.97-9.06
Male	6.8	5.36-8.30
Female	9.2	7.81-10.61
<b>35 years and over</b>		
Total	7.0	6.34-7.57
Male	5.4	4.49-6.21
Female	8.4	7.51-9.28
<b>All ages: crude<sup>1</sup></b>		
Total	7.8	7.27-8.30
Male	7.1	6.43-7.86
Female	8.4	7.73-9.06
<b>All ages: age-adjusted<sup>2</sup></b>		
Total	7.8	7.29-8.32
Male	7.1	6.42-7.83
Female	8.4	7.72-9.05

<sup>1</sup>Crude estimates are presented in the figure.

<sup>2</sup>Estimates are age adjusted using the projected 2000 U.S. population as the standard population using three age groups: 0–14 years, 15–34 years, and 35 years and over.

DATA SOURCE: National Health Interview Survey, January–June 2006. Data are based on household interviews of a sample of the civilian noninstitutionalized population.

**Data table for figure 15.6. Sex-adjusted prevalence of current asthma among persons of all ages, by age group and race/ethnicity: United States, January–June 2006**

Age and race/ethnicity	Percent <sup>1</sup>	95% confidence interval
<b>0–14 years</b>		
Hispanic or Latino	10.3	7.94-12.69
Not Hispanic or Latino:		
White, single race	8.6	7.09-10.01
Black, single race	12.2	9.44-15.03
<b>15 years and over</b>		
Hispanic or Latino	6.1	4.75-7.36
Not Hispanic or Latino:		
White, single race	7.5	6.77-8.16
Black, single race	7.5	6.21-8.70

<sup>1</sup>Estimates are sex adjusted using the projected 2000 U.S. population as the standard population.

DATA SOURCE: National Health Interview Survey, January–June 2006. Data are based on household interviews of a sample of the civilian noninstitutionalized population.