

TABLE 1

Laboratory-confirmed *Salmonella* isolates from human sources reported to CDC, with the 20 most frequently reported serotypes listed individually, 2008

Rank	Serotype	Number Reported	Percent
1	Enteritidis	7485	16.0
2	Typhimurium *	6736	14.4
3	Newport	4097	8.7
4	Javiana	2329	5.0
5	Saintpaul	1910	4.1
6	Heidelberg	1325	2.8
7	Montevideo	1129	2.4
8	I 4,[5],12:i:-	980	2.1
9	Muenchen	888	1.9
10	Oranienburg	668	1.4
11	Braenderup	665	1.4
12	Infantis	653	1.4
13	Agona	652	1.4
14	Poona	512	1.1
15	Typhi	499	1.1
16	Paratyphi B var. L(+) tartrate+	470	1.0
17	Mississippi	450	1.0
18	Thompson	413	0.9
19	Litchfield	357	0.8
20	Schwarzengrund	351	0.7
	Sub Total	32569	69.5
1	All other serotyped	6868	14.7
	Unknown	5639	12.0
	Partially serotyped	1647	3.5
	Rough, mucoid, and/or nonmotile isolates	131	0.3
	Sub Total	14285	30.5
	Total	46854	100
Notes: ----- Typhimurium includes var. 5- (formerly var. Copenhagen) All serotyped isolates listed in Table 3			

TABLE 1a

Laboratory-confirmed *Salmonella* isolates from human sources reported to CDC: Percent change among the 20 most frequently reported serotypes, 1998-2008

Rank			Serotype	Number Reported			Percent Change		
1998	2003	2008		1998	2003	2008	1998-2003	2003-2008	1998-2008
2	2	1	Enteritidis	6030	4914	7485	-19	52	24
1	1	2	Typhimurium *	8819	6770	6736	-23	-1	-24
3	3	3	Newport	2273	4000	4097	76	2	80
5	5	4	Javiana	1168	1718	2329	47	36	99
14	7	5	Saintpaul	479	838	1910	75	128	299
4	4	6	Heidelberg	1900	1845	1325	-3	-28	-30
7	6	7	Montevideo	829	890	1129	7	27	36
21	12	8	I 4,[5],12:i:-	176	548	980	211	79	457
9	8	9	Muenchen	639	795	888	24	12	39
8	9	10	Oranienburg	693	589	668	-15	13	-4
13	11	11	Braenderup	497	553	665	11	20	34
10	10	12	Infantis	600	570	653	-5	15	9
6	13	13	Agona	991	523	652	-47	25	-34
16	22	14	Poona	346	211	512	-39	143	48
15	16	15	Typhi	382	362	499	-5	38	31
18	17	16	Paratyphi B var. L(+) tartrate+	248	342	470	38	37	90
17	15	17	Mississippi	314	451	450	44	-0	43
11	14	18	Thompson	571	509	413	-11	-19	-28
31	29	19	Litchfield	119	168	357	41	113	200
29	26	20	Schwarzengrund	124	181	351	46	94	183

Note:

* Typhimurium includes var. 5- (formerly var. Copenhagen)

Laboratory-confirmed *Salmonella* isolates from human sources reported to CDC by age group and sex, 2008

Age Group	Sex			Total
	Female	Male	Unknown	
< 1 Year	2219	2447	166	4832
1 to 4	3322	3701	294	7317
5 to 9	1595	1851	129	3575
10 to 19	1909	2164	136	4209
20 to 29	2300	2084	187	4571
30 to 39	2011	1713	151	3875
40 to 49	2156	1756	175	4087
50 to 59	2050	1662	135	3847
60 to 69	1716	1251	83	3050
70 to 79	1340	900	81	2321
80+	1026	545	48	1619
Unknown Age	762	703	2086	3551
	22406	20777	3671	46854

FIGURE 1

Laboratory-confirmed *Salmonella* Isolates from human sources reported to CDC by age group and sex, 2008

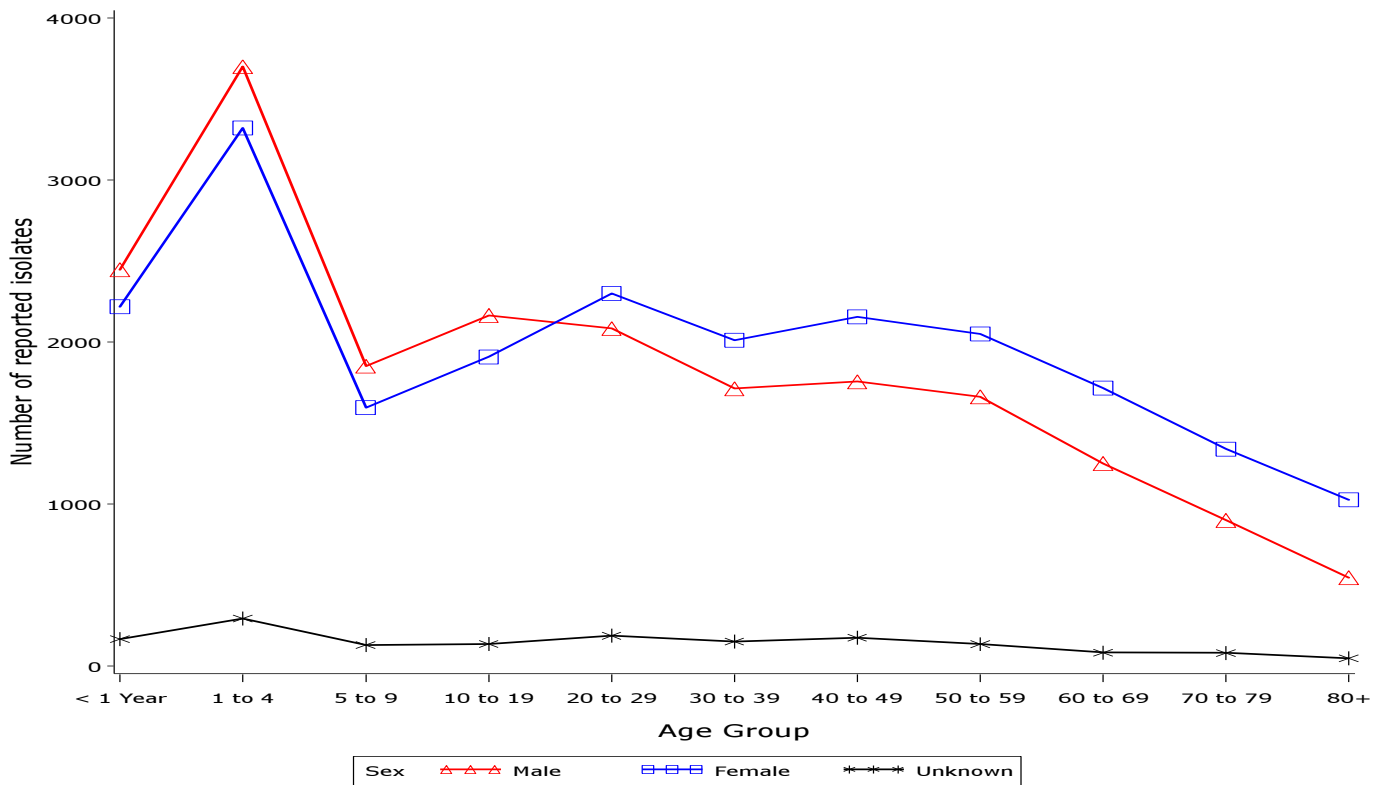


TABLE 3

Laboratory-confirmed *Salmonella* isolates from human sources reported to CDC by serotype and year, 1998-2008

Serotype	1998	1999	2000	2001	2002	2003	2004	2005	2006	2007	2008	Total
Aarhus	9	6	7	2	7	9	3	5	6	6	6	66
Aba			4			1			1		1	7
Abadina					2							2
Abaetetuba	7	7	5	4	3	1	1		3	3	1	35
Aberdeen	4	4	13	5	3	3	6	6	10	13	6	73
Abony	6	4	1	11	9	9	10	2	8	3	3	66
Adelaide	73	95	42	81	66	60	76	71	70	59	72	765
Adime						1						1
Aequatoria		1					5	2				8
Aflao		1										1
Africana	2	6					1					9
Afula							1					1
Agama	2	2	1	1	5	4	2	8	4	2		31
Agbeni		1	13	5	4	7	72	15	15	16	17	165
Ago	1		1						1	4	5	12
Agodi					1							1
Agona	991	528	406	372	340	523	407	369	538	512	652	5638
Agoueve	6	2	2	3	6	2	2	3	3	2	1	32
Ahoutoue										1		1
Ahuza			2									2
Ajiobo	2		2		2	1	1		1			9
Alabama	2	4	1	1	3		3	3	5			22
Alachua	14	22	20	9	16	10	28	21	18	19	14	191
Alagbon							1	3			1	5
Alamo	1											1
Albany	23	17	18	17	15	17	34	38	36	36	21	272
Albert								1				1
Albuquerque					1							1
Allandale	1		1	1			1					4
Allerton							1					1
Altona		1	4	3	3		2	1	4	6	6	30
Amager	3	4	7	1	2	3	15	5	4	4	7	55
Amager var. 15+							3				2	5
Amherstiana									1			1
Amounderness											1	1
Amoutive									1	2	2	5
Amsterdam	5	6	2	5	7	6	3	2	3	2	2	43
Amsterdam var. 15+	4	5	1	5	3		1	2	1			22
Anatum	138	157	177	188	217	177	250	197	238	203	221	2163

TABLE 3

Laboratory-confirmed *Salmonella* isolates from human sources reported to CDC by serotype and year, 1998-2008

Serotype	1998	1999	2000	2001	2002	2003	2004	2005	2006	2007	2008	Total
Anatum var. 15+	25	23	8	4	4	10	11	6	16	7	12	126
Anatum var. 15+, 34+					1							1
Anecho	2	2	1		5	2		2	3	9	10	36
Anfo								1	1	2	2	6
Annedal				1								1
Antsalova	2		3		1		1					7
Apapa		2	4	8	10	3	12	7	7	13	7	73
Apeyeme		1	1				1	2				5
Aqua			2	1		1	2	2	3	1	1	13
Aragua	1		1									2
Arapahoe					1							1
Arechavaleta	4	3	9	3	6	3	14	4	2	13	9	70
Assen		1	1		1			1			1	5
Assinie									4			4
Athinai	1											1
Ati							2					2
Augustenborg				1				1			2	4
Austin				1								1
Australia				3								3
Avignon									1			1
Avonmouth					1							1
Azteca		1						1			1	3
Babelsberg			1				2					3
Baguirmi				1								1
Bahrenfeld									1			1
Baildon	73	77	4	2	14	12	7	33	14	17	9	262
Ball				1						1		2
Banalia				1								1
Banana	1		1	1		3		2	1			9
Banco	2											2
Bandia							1					1
Bardo	10	13	20	16	49	42	32	27	29	33	23	294
Bareilly	153	171	182	206	183	240	232	201	256	249	245	2318
Bargny									1			1
Barranquilla		1		3	1	3	3	1	5	6	26	49
Bassa						1						1
Bassadji				1			1					2
Beaudesert			1			1			3	2	3	10
Belem		1				1						2

TABLE 3

Laboratory-confirmed *Salmonella* isolates from human sources reported to CDC by serotype and year, 1998-2008

Serotype	1998	1999	2000	2001	2002	2003	2004	2005	2006	2007	2008	Total
Benfica	1	1		1								3
Benin								1	6		1	8
Bere	1			1		1		2	7	7	14	33
Bergen		1	2			1			1			5
Berkeley	1											1
Berta	123	143	312	334	300	201	409	209	252	191	197	2671
Bietri											1	1
Bijlmer								2				2
Binningen							1					1
Birkenhead	4		2	2		4	5	2		1	3	23
Bispebjerg						1						1
Blegdam	3	1	2	2	3	2	8	4			1	26
Blijdorp						1						1
Blockley	61	54	28	33	38	67	83	50	61	66	50	591
Bobo								1				1
Bochum	5	1		3		1						10
Bolton			1									1
Bonames			1			1						2
Bonariensis	6	4	3	6	6	4	3	1	2	4	5	44
Bonn	1		1	2			2		1			7
Borbeck			1									1
Bournemouth					1	2	1	2	1	2	1	10
Bousso	1							3	1			5
Bovismorbificans	64	35	55	83	74	69	110	73	71	47	79	760
Bracknell					1							1
Bradford	1		2	1	2	3	1		1	1		12
Braenderup	497	529	531	396	389	553	684	603	561	589	665	5997
Brancaaster	1					1						2
Brandenburg	132	117	84	106	140	116	80	134	94	73	81	1157
Brazil		2				2	2	2	3	3	4	18
Brazos		1										1
Brazzaville						1		2	3	1	1	8
Bredenev	112	44	25	79	41	56	27	26	27	23	32	492
Breukelen										1		1
Brezany				4	2	1		1			1	9
Bron				1			3		1		1	6
Bronx	2			1						1		4
Brooklyn	1					1						2
Broughton		1										1

TABLE 3

Laboratory-confirmed *Salmonella* isolates from human sources reported to CDC by serotype and year, 1998-2008

Serotype	1998	1999	2000	2001	2002	2003	2004	2005	2006	2007	2008	Total
Brunei							3	2			1	6
Bsilla				1	1		3	1			2	8
Budapest										1		1
Bukavu			1			1				2	1	5
Bukuru							1					1
Burgas										1		1
Burundi											1	1
Butantan		1			1			1				3
Butantan var. 15+			1									1
Buzu	4	1				1			2	2		10
Calabar	1	1										2
California	3	1		1		5	1		2		1	14
Camberwell	1											1
Canada			1		1	1	1	1				5
Cannstatt	1		1	1	3	1			1		2	10
Caracas		1			1				1		1	4
Carmel		1	1	8	9		9	4	1	4	2	39
Carno		1										1
Carrau	3	12	6	5	3	7	8	9	10	1	7	71
Cerro	52	56	52	31	39	28	19	22	33	26	70	428
Cerro var. 14+						3	3	4	2	5	7	24
Ceyco				1	1							2
Chailey	9	3	3		1	1	3	2			2	24
Chandans					3		1	5	1	1	1	12
Charity			1									1
Chester	24	29	23	24	23	51	15	15	29	31	28	292
Chicago	1				1	1			1	2		6
Chichiri				1		1						2
Chile											1	1
Chincol	1	2	2			1		2	1			9
Chingola				1						1		2
Chittagong								7				7
Choleraesuis	23	25	10	8	11	13	17	7	12	15	18	159
Choleraesuis var. Decatur	2			1	3		1					7
Choleraesuis var. Kunzendorf	13	9	10	5	8	6	9	6	11	10	4	91
Clackamas		3	1		6	4	1	1	1	2	5	24
Claibornei	1	1		1			1		1			5
Clerkenwell				1								1
Cleveland							1					1

TABLE 3

Laboratory-confirmed *Salmonella* isolates from human sources reported to CDC by serotype and year, 1998-2008

Serotype	1998	1999	2000	2001	2002	2003	2004	2005	2006	2007	2008	Total
Cochise			1									1
Coeln	5	2	3	3	3	2	3	2	4	4	6	37
Colindale	4	2	3	2	5	8	3	4	13	5	6	55
Colorado	2	2				1						5
Concord	2	3		2	1	3	4	6	17	20	31	89
Corvallis	1	1	1		1	3	4	13	23	22	30	99
Cotham		2	1		3	6	5	9	12	15	23	76
Cremieu			2	1				1				4
Croft									1			1
Cubana	72	42	31	26	21	24	18	13	17	25	9	298
Cuckmere							1		1			2
Cullingworth			1					6			1	8
Curacao		1	2	1				1				5
Daarle							1	1			1	3
Dahlem									1			1
Dahomey						1						1
Dahra		2	1	1	1	1		2	2	1		11
Dakar										1		1
Damman							1					1
Daytona	3	4	3	4	4	10	10	5	5	1	3	52
Denver	1	1	1	1	2	5	1	5	1	3	6	27
Derby	171	174	188	121	169	125	137	123	139	148	159	1654
Derkle			1									1
Dessau				1								1
Diguel	1				2	1		1				5
Diourbel			1					1				2
Djakarta									1			1
Djelfa		1										1
Djugu	1	1	1				2	1	2	2	2	12
Doncaster						1						1
Doorn									1			1
Doulassame	1							1				2
Dublin	78	66	94	76	83	65	73	55	88	109	111	898
Duesseldorf	15	5	1	2		8	9	1		3	1	45
Dugbe			1									1
Duisburg		1	1	2	2	2			1	2	5	16
Dunkwa				1								1
Durban	10	3	4	5	1	3	16	6	11	12	8	79
Durham		1	3	3	4	4	3	8	4	1	3	34

TABLE 3

Laboratory-confirmed *Salmonella* isolates from human sources reported to CDC by serotype and year, 1998-2008

Serotype	1998	1999	2000	2001	2002	2003	2004	2005	2006	2007	2008	Total
Duval	1				1		1		1			4
Ealing	6	6	9	16	10	12	13	27	12	28	26	165
Eastbourne	8	7	10	6	18	18	8	30	16	16	25	162
Ebrie		1	3	2	1	1					1	9
Echa						1		1				2
Edinburg	1	6	2	1	5	20	27	20	17	8	7	114
Edmonton								1				1
Ekpoui			1		1							2
Elisabethville							1			2		3
Elokate						1						1
Elomrane		3	1	1	1	1	3			1		11
Emek	7	8	5	2	2	11	6	7	3	7		58
Entebbe		1				1	1		3	6		12
Enteritidis	6030	5343	6487	5634	5145	4914	5028	6732	6740	6152	7485	65690
Enugu											1	1
Epicrates					1							1
Eppendorf		2	2				1		2	1	5	13
Escanaba					1					1		2
Eschweiler								1				1
Essen	2	3	4	1		1	2	1	1	5	1	21
Falkensee						1		4		1		6
Fann					1			1				2
Farmsen	4	3		1	1	1	1	1			1	13
Farsta					4		1		1			6
Fayed		6	3	4		1		1	1			16
Ferruch						1						1
Fillmore					1						1	2
Finkenwerder		1										1
Fischerkietz	1	1							1			3
Fischerstrasse			1		1					4	4	10
Fitzroy							1					1
Florida	8	1	2	4	2	3	1	6	3	7	1	38
Fluntern	3			2	2	5	8	3	3	5	6	37
Fomeco								1				1
Freetown				1		6	2	11			1	21
Freiburg						1					1	2
Fresno				3	1					1	4	9
Friedenau					1	1			1			3
Friedrichsfelde							2	1	1	1	1	6

TABLE 3

Laboratory-confirmed *Salmonella* isolates from human sources reported to CDC by serotype and year, 1998-2008

Serotype	1998	1999	2000	2001	2002	2003	2004	2005	2006	2007	2008	Total
Frintrop									1			1
Fulica								1				1
Fyris	1							1	2			4
Gabon	1	1			1							3
Galiema						1	1					2
Galil				2								2
Gallinarum	1	1		1	3	2		2		1		11
Gamaba	1											1
Gambia								1				1
Gaminara	61	52	51	58	44	86	134	99	77	79	89	830
Garba				1								1
Garoli									1			1
Gatow	2		1	1	1			2		2		9
Gatuni	1	1	1	3		2	3	1	2	2	4	20
Georgia	2			4	3	2	2	1	6	5	3	28
Gera						1						1
Give	92	98	86	75	55	93	102	103	123	106	116	1049
Give var. 15+	36	23	9	9	5	7	5		1	6	4	105
Give var. 15+, 34+					1						2	3
Glasgow				1						2		3
Glostrup	10	7	6	6	2	2	2	10	5	5	4	59
Gnesta							1			2	3	6
Goettingen	1	1	3		2	1	2			3	3	16
Goldcoast	1	1					1	2		1		6
Goma						1						1
Gombe							1				1	2
Goverdhan										1		1
Grandhaven									1			1
Groenekan				1								1
Grumpensis	1	2	1	1		1		102	9	2	3	122
Guildford		1								1		2
Guinea							1	3	1	3	2	10
Gustavia			1	1								2
Gwale									1			1
Haardt	2	3	4	4	3	52	29	4	5	5	3	114
Hadar	544	516	354	307	333	280	277	205	275	285	320	3696
Hadejia		1										1
Haifa	3	6	11	4	6	3	5	5	5	5	5	58
Halle		1										1

TABLE 3

Laboratory-confirmed *Salmonella* isolates from human sources reported to CDC by serotype and year, 1998-2008

Serotype	1998	1999	2000	2001	2002	2003	2004	2005	2006	2007	2008	Total
Hannover							1					1
Harburg					1	1			1			3
Harcourt									1			1
Harleystreet	1											1
Harrisonburg							1					1
Hartford	175	140	150	158	198	188	190	239	199	197	214	2048
Hatfield		1				1						2
Hato		1	2	5	1	1	2		4	2	5	23
Havana	77	46	26	19	28	29	32	26	37	35	59	414
Hayindogo	1			1	1							3
Heidelberg	1900	1816	1772	1895	1985	1845	1758	1905	1495	1610	1325	19306
Hemingford							1					1
Herston				1	1	2	2	2	2	1	2	13
Hessarek						1						1
Hidalgo							1					1
Hiduddify	3	1	1		1	2			1			9
Hillegersberg					1	1			1		1	4
Hillingdon								1				1
Hindmarsh	3		3	4	2	5	12	5	5		3	42
Hofit								1	2		1	4
Hoghton							1		1			2
Holcomb		1		3	4	1		2	3	4	5	23
Holocomb										1		1
Homosassa	2										1	3
Horsham		3				1			1		1	6
Hull				1	1	2		3	3	5	9	24
Hvittingfoss	29	38	34	30	44	32	34	36	45	55	47	424
Ibadan	39	27	17	9	10	17	5	9	3	2	3	141
Idikan	1		2		1	1		1		2	3	11
Ilala							1				1	2
Inchpark		1										1
Indiana	7	14	9	13	24	43	18	17	28	11	15	199
Infantis	600	596	613	441	472	570	588	506	491	540	653	6070
Inganda			1	4		2	1		1	2		11
Inpraw						1						1
Inverness	32	24	22	24	30	30	49	44	49	58	47	409
Ipswich		1										1
Irenea		1				1						2
Irumu	15	6	6	9	2	9	13	9	9	5	10	93

TABLE 3

Laboratory-confirmed *Salmonella* isolates from human sources reported to CDC by serotype and year, 1998-2008

Serotype	1998	1999	2000	2001	2002	2003	2004	2005	2006	2007	2008	Total
Isangi	5	2		3	1	4	3	4	1	4	4	31
Israel						2	1		1	4		8
Istanbul	7	25	15	27	33	15	61	9	8	4	2	206
Isuge					1							1
Itami	8	7	12	50	3	8	7	10	1	1		107
Ituri	5	3	2	7	1		1	1	1	1	3	25
Jaffna										1		1
Jamaica	1	2									1	4
Jangwani	5	6	7	2	3		4	4		8	1	40
Javiana	1168	1197	1204	1068	1201	1718	1776	1324	1433	1331	2329	15749
Jedburgh								1				1
Jericho								1				1
Jerusalem				1	1	1			1			4
Joal					2	2	4			1		9
Jodhpur	1				1		1				1	4
Johannesburg	32	44	31	35	20	17	40	44	22	38	31	354
Jos		1						2				3
Jubilee							1		1			2
Jukestown									1			1
Kaapstad			1	1		2	1					5
Kaduna								1				1
Kalamu				1					1			2
Kalina				1				1				2
Kallo									1			1
Kambole	1					1						2
Kande				1	3							4
Kandla					1							1
Kapemba							1		1			2
Kedougou	1	2	3	1	1		3	4	4	1	2	22
Kentucky	58	71	48	64	69	59	56	81	123	96	96	821
Kiambu	13	40	24	27	41	84	31	53	65	34	82	494
Kimberley								1				1
Kimuenza					1			1	1	1		4
Kingabwa		2		3	11	4	7	11	4	8	7	57
Kingston	1			2	1		1	1		2	5	13
Kinondoni	1	1			1							3
Kintambo	20	8	3	5	9	10	16	5	15	8	13	112
Kirkee		1							2			3
Kisangani								2	1		1	4

TABLE 3

Laboratory-confirmed *Salmonella* isolates from human sources reported to CDC by serotype and year, 1998-2008

Serotype	1998	1999	2000	2001	2002	2003	2004	2005	2006	2007	2008	Total
Kisarawe	2			1	2		1	1		3	1	11
Kisii										1	1	2
Kivu		2							1			3
Koketime											3	3
Kokoli	1											1
Kokomlemle	1	1	2	4	2	1	2	1	2	3	2	21
Konstanz				2		1				1		4
Korbol								1	1			2
Korlebu									1			1
Kortrijk									1			1
Kottbus	2	5	15	73	19	7	8	8	15	13	19	184
Kotu							1	4				5
Kralingen		1	1									2
Krefeld		1	1		2	1		1			2	8
Kristianstad			1	1								2
Kua	1	2	1	2		3	2			1	3	15
Kumasi											2	2
Kunduchi	1										1	2
Labadi	1										1	2
Lagos				1	1	1	2		1	4	1	11
Lamberhurst	1		1									2
Lamin	1											1
Landau				1								1
Landwasser	1	2		1							3	7
Langensalza	1											1
Lansing		1					2			1		4
Larochelle	6	4	2		8	4	6	2	2	3	4	41
Lattenkamp				1				1		1	3	6
Leeuwarden				2		1						3
Leopoldville				1								1
Lexington			1	5	1		5	1	1	4	1	19
Lexington var. 15+		1							1			2
Lika						4						4
Lille		1	1		1		1			1		5
Lille var. 14+			1									1
Limete	1			1				1	1		3	7
Lindenburg	10	5	7	3	2	3	2	4	3	2	3	44
Lindern					1							1
Litchfield	119	135	119	140	125	168	155	141	202	238	357	1899

TABLE 3

Laboratory-confirmed *Salmonella* isolates from human sources reported to CDC by serotype and year, 1998-2008

Serotype	1998	1999	2000	2001	2002	2003	2004	2005	2006	2007	2008	Total
Liverpool		2	1			1	3	4	2	3	5	21
Livingstone	5	4	6	8	9	2	3	7	9	8	11	72
Livingstone var. 14+		1								1		2
Llandoff						1						1
Loanda			1	1		1	2	2	2	3		12
Lockleaze	1	1			1			1	2	1		7
Lomalinda	16	8	9	5	25	12	15	18	20	12	16	156
Lome				2		1					1	4
Lomita	3		2	4	2	6	4			1	4	26
London	28	41	26	24	22	45	28	30	37	176	29	486
London var. 15+	2	1										3
Loubomo				1								1
Louga						1						1
Lovelace	1											1
Lowestoft						1						1
Luciana	3	6	8	2	6	4	4	4	3	9	5	54
Macallen										1		1
Madelia	12	12	16	3	4	6	6	6	11	11	10	97
Madison											1	1
Madras								1				1
Magwa	1											1
Malika								1				1
Malstatt			1	1				2				4
Manchester		1	1	1		1					1	5
Mango		1										1
Manhattan	73	78	72	50	89	53	80	58	79	55	115	802
Mapo						1						1
Mara								1				1
Maracaibo					2							2
Marburg						1						1
Maricopa											3	3
Marshall				1								1
Maryland	1											1
Massenya						1						1
Matadi	4	2	9	3	5	4	2	2		2	2	35
Matopeni	2			1					3	1	1	8
Maumee			1				1			1		3
Mbandaka	147	231	157	163	171	173	164	190	240	231	234	2101
Mbandaka var 14+									1			1

TABLE 3

Laboratory-confirmed *Salmonella* isolates from human sources reported to CDC by serotype and year, 1998-2008

Serotype	1998	1999	2000	2001	2002	2003	2004	2005	2006	2007	2008	Total
Meekatharra				1								1
Meleagridis	39	14	13	19	6	14	8	12	20	26	10	181
Meleagridis var. 15+		1								1		2
Memphis		1					2		1			4
Menden		1							1			2
Mendoza	3	1		2		1	8	2				17
Menston				2		2			1	1	1	7
Mgulani		2				1			2	1		6
Miami	99	95	81	68	130	66	103	82	64	97	102	987
Michigan	2	2	1	1		2	6	1	4	7	3	29
Mikawasima		4	6	3	5	4	1	1	6	2	1	33
Milwaukee				4								4
Mim							1					1
Minnesota	17	23	21	18	35	25	35	55	57	34	24	344
Mississippi	314	248	286	336	315	451	558	566	604	472	450	4600
Mkamba							1					1
Molade	1		4			2		2	3	2	2	16
Mono	1			2		2		41	31	30	10	117
Mons					1						1	2
Monschau	3	5	5	7	5	13	21	14	10	11	14	108
Montevideo	829	851	841	630	729	890	874	809	1061	1003	1129	9646
Montreal								1				1
Morehead											2	2
Mornington									1			1
Morocco					1							1
Morotai							1					1
Moscow	4			1					1			6
Moualine				1								1
Moundou		1										1
Mountpleasant	1			1		1		1		1	1	6
Mowanjum											1	1
Muenchen	639	1332	642	586	603	795	739	733	753	995	888	8705
Muenster	68	65	113	64	49	70	59	93	96	70	85	832
Muenster var. 15+	1			1	1	9	2	1		1		16
Muenster var. 15+, 34+	2	4	2		1					1		10
Mundonobo			1					1				2
Nagoya					1	1		1	1			4
Napoli		2	2		1		1	6	3	1	1	17
Narashino								1				1

TABLE 3

Laboratory-confirmed *Salmonella* isolates from human sources reported to CDC by serotype and year, 1998-2008

Serotype	1998	1999	2000	2001	2002	2003	2004	2005	2006	2007	2008	Total
Nchanga	1		1			2			1			5
Nchanga var. 15+										1		1
Ndolo				1								1
Nessziona			1	2			1	1	3	1		9
Neudorf									1	1		2
Neukoelln							1					1
Newholland								2				2
Newmexico			4	2	2	10	3	3	2	1	8	35
Newport	2273	2618	3074	3168	4251	4000	3329	3300	3373	3620	4097	37103
Newrochelle	1	1										2
Newyork		1								1		2
Ngili					2							2
Ngor		2										2
Nieukerk						1						1
Nigeria			1			1	2			1	1	6
Nikolaifleet				1								1
Nima	5	1	5	6	13	2	5	8	15	8	11	79
Nitra		1		1		2				1		5
Nola				1								1
Norwich	67	74	69	96	106	121	106	91	119	118	139	1106
Nottingham	2		4	2	1	11	1	4	2	4	3	34
Nyanza					1		1			1		3
Nyborg						1				1		2
Oakland		1	1	1	1	3				1	5	13
Obogu						2						2
Offa					1			1	1	2	2	7
Ohio	79	78	85	64	58	49	74	87	62	46	37	719
Ohio var. 14+				1				1	6	4	1	13
Ohlstedt							1					1
Okatie						4			2			6
Oldenburg	1	1			1	1				1		5
Onderstepoort		1	2	1	2	2			1			9
Ontario		1										1
Oranienburg	693	616	563	598	607	589	495	590	719	692	668	6830
Oranienburg var. 14+					2	11	2	5	9	3		32
Orientalis	1	2	5		1	8	2				3	22
Orion	1		3	3		5	3	2	5	6	3	31
Orion var. 15+	1	1		2	1		1			1		7
Orion var. 15+, 34+	2	4	2	1			1					10

TABLE 3

Laboratory-confirmed *Salmonella* isolates from human sources reported to CDC by serotype and year, 1998-2008

Serotype	1998	1999	2000	2001	2002	2003	2004	2005	2006	2007	2008	Total
Oritamerin			1	3	1		3	2	1			11
Os									1			1
Oskarshamn										1		1
Oslo	31	28	20	23	19	21	25	30	23	20	35	275
Othmarschen	7	20	27	14	17	17	23	20	11	16	16	188
Ouakam	1			1		1			4			7
Oudwijk	1			1								2
Overschie	3	2	1	1	1	2		3	3	2	2	20
Oxford							1					1
Oxford var. 15+, 34+									1			1
Oyonnax			1					2				3
Pakistan		6	3	5	5	4	5		6	3		37
Panama	119	132	158	162	153	184	150	149	199	177	172	1755
Papuana				1							3	4
Paratyphi A	84	77	93	86	107	110	145	121	182	191	145	1341
Paratyphi B	189	172	120	180	124	215	239	105	138	151	94	1727
Paratyphi B Var. L(+) tartrate+											3	3
Paratyphi B var. L(+) tartrate+	248	316	468	467	442	342	354	460	417	412	470	4396
Paratyphi C		1		1			2	1	1	1		7
Patience					1							1
Penarth			1	1					1			3
Pensacola	5	8	10	8	8	2	4	14	13	12	17	101
Pharr		1										1
Plymouth								4	2	1	1	8
Poano			2		8	9	6	6	5	2		38
Poitiers								1				1
Pomona	20	28	26	38	61	68	70	68	91	65	92	627
Poona	346	249	337	331	283	211	234	196	204	251	512	3154
Portland							1		2		1	4
Potengi											1	1
Potsdam	6	9	2	6	4	9	4	4	18	17	22	101
Powell									1			1
Praha		1	1			1		1	1	1	1	7
Presov									1	1		2
Preston											1	1
Putten	9	3	2	9	4	12	4	9	2	5	10	69
Quebec	1											1
Quiniela	1						2					3
Ramatgan		1										1

TABLE 3

Laboratory-confirmed *Salmonella* isolates from human sources reported to CDC by serotype and year, 1998-2008

Serotype	1998	1999	2000	2001	2002	2003	2004	2005	2006	2007	2008	Total
Raus	3	3										6
Reading	81	97	95	53	81	90	74	55	51	58	47	782
Rehovot				1		1						2
Redlands						1			1			2
Remo	1	2		3			1		2	1		10
Rhone										1		1
Richmond	4	2	7	6	11	6	6	8	9	12	2	73
Ridge		1		3	1					1		6
Riggil				1								1
Riogrande		1										1
Rissen	6	6	10	4	7	7	7	5	18	11	30	111
Rissen var. 14+								1				1
Rittersbach					1	1						2
Riverside								1			1	2
Romanby	1	6	5	1	1	1	1	3	1	1	1	22
Roodepoort	2	2	1	1	2	6	3	3	9	1		30
Rostock				2								2
Rottnest		1										1
Rovaniemi									1			1
Rubislaw	88	98	76	66	83	103	104	100	96	129	124	1067
Ruiru		1		1				1				3
Ruzizi		1			1							2
Saarbruecken	1				1				3		1	6
Saboya	1											1
Saintemarie							1			1	1	3
Saintpaul	479	472	548	471	548	838	695	685	588	520	1910	7754
Salford			1						1		1	3
Sandiego	55	104	142	115	148	126	112	139	221	200	133	1495
Sangalkam							1					1
Sangera					1							1
Sanjuan		2	3						1	1		7
Sanktgeorg				1					2			3
Santiago		1				2	1					4
Sapele					1							1
Saphra	16	13	14	11	4	12	4	5	1	1	7	88
Sarajane	1											1
Schleissheim	8	6	7	4	7	8	3	6	6	1		56
Schoeneberg				1								1
Schwarzengrund	124	155	113	104	99	181	148	139	174	307	351	1895

TABLE 3

Laboratory-confirmed *Salmonella* isolates from human sources reported to CDC by serotype and year, 1998-2008

Serotype	1998	1999	2000	2001	2002	2003	2004	2005	2006	2007	2008	Total
Schwerin								1				1
Sculcoates	1											1
Seegefeld			1									1
Sekondi						1						1
Selby							1					1
Sendai	2	1	1		1							5
Senegal			1	2	1	1						5
Senftenberg	143	120	148	143	128	99	104	112	113	168	209	1487
Seremban			1	1	1		2	1				6
Serrekunda	1											1
Sherbrooke			1									1
Shiopley							2					2
Shubra	4	7	5	3	7	3	2	2	3	2	9	47
Simi					1				2	1		4
Singapore	12	4	6	1	2	2	10	5	7	8	14	71
Sinstorf	1	3	3	7		2	1		1			18
Skansen	1											1
Soahanina			1					1				2
Soerenga		2	2	3	1	1	3	1	3	7	5	28
Somone	1	1		1	3				1			7
Southampton		1	1									2
Southbank											1	1
Spalantor							2					2
Splott								1				1
Stachus		2	1				1	1		1		6
Stanley	193	172	239	173	177	227	189	224	315	258	218	2385
Stanleyville	16	11	33	18	18	3	6	7	5	6	10	133
Stellingen	1					1	1					3
Sternschanze										1		1
Stockholm		4	2					1				7
Stockholm var. 15+										1		1
Stoneferry						1	1					2
Stormont						1						1
Stourbridge								1				1
Strasbourg				1			1					2
Suberu	1					1		1	1			4
Suelldorf		1				2	1		1	2	1	8
Sundsvall	7	4	4	4	7	11	6	9	3	3	4	62
Sya			1									1

TABLE 3

Laboratory-confirmed *Salmonella* isolates from human sources reported to CDC by serotype and year, 1998-2008

Serotype	1998	1999	2000	2001	2002	2003	2004	2005	2006	2007	2008	Total
Szentes					1							1
Tabligbo								1		1		2
Tafo		1										1
Takoradi	4	4			1	6	5		3	1	2	26
Tallahassee	8	5	3	2	4	8	3	7	11	7	5	63
Tambacounda	1	1	1									3
Tamberma									1			1
Tampico		2			1							3
Tanger				1		2						3
Tanzania									1			1
Teddington					1							1
Teko	1											1
Telaviv	1		1									2
Telelkebir	26	16	14	11	11	21	29	45	53	68	27	321
Teltow						1						1
Tennessee	63	29	24	33	36	42	57	132	312	616	131	1475
Texas								1				1
Thies		1										1
Thompson	571	607	609	514	442	509	494	428	447	414	413	5448
Thompson var. 14+							1					1
Tienba	1											1
Tiko										1		1
Tilene		1	2		2	4		1	1			11
Tokoin			4			2		1				7
Tornow				2		2	3		1			8
Toucra			1		2	2	3	2	1			11
Trachau						1						1
Travis		1		1			2					4
Treforest				2								2
Treguier									1			1
Tripoli							2					2
Troy	1											1
Tsevie				2								2
Tshiongwe			2		2	2	1	4	3			14
Tucson		1			1		1	4		4	2	13
Typhi	382	352	399	344	293	362	306	350	413	450	499	4150
Typhimurium	8101	7126	6495	6061	6312	5905	5872	5977	5917	5315	5672	68753
Typhimurium var. 5-	718	926	933	979	828	865	983	1010	955	964	1064	10225
Typhisuis				1			2					3

TABLE 3

Laboratory-confirmed *Salmonella* isolates from human sources reported to CDC by serotype and year, 1998-2008

Serotype	1998	1999	2000	2001	2002	2003	2004	2005	2006	2007	2008	Total
Tyresoe							1		1		1	3
Uccle	3		2			1					1	7
Uganda	44	58	55	97	61	59	45	47	59	71	67	663
Uganda var. 15+	1	3	4	1	3	2	1			2	1	18
Ughelli			1					2				3
Umbilo									1			1
Umhlali			1									1
Uppsala	1		1				1		1	4		8
Urbana	46	56	38	53	41	60	59	44	36	65	52	550
Utah											1	1
Uzaramo	3	1	2	1		3	5		2		4	21
Valdosta							2			3		5
Vancouver										2	1	3
Vejle	1	1		1	1	2	4	1				11
Vejle var. 15+						1						1
Veneziana				1								1
Victoria	1			1	1						1	4
Vinohrady									1			1
Virchow	64	70	104	80	61	78	79	82	80	77	104	879
Virginia		10	1	5	4	3	10	6	13	4	6	62
Vitkin				1						1		2
Vleuten											1	1
Volkmarsdorf							1					1
Vuadens											1	1
Wa		1								1		2
Wagenia			1			1						2
Wandsworth		9	12	3	5	6	2	3	7	69	6	122
Wangata	1		2		1		3	3		2	3	15
Waral					1	2						3
Warmсен										1		1
Warnow					2	1						3
Washington		1				1						2
Waycross	2	2	5	4	1	2	2	5	2		4	29
Welikade	1	1		3	1		1				1	8
Weltevreden	67	54	59	89	65	71	94	91	91	79	92	852
Weltevreden var. 15+	1	1	1	3			2	1	4	4	2	19
Wentworth							4					4
Wernigerode	3			1				1				5
Weslaco	2	1				1		2		1		7

TABLE 3

Laboratory-confirmed *Salmonella* isolates from human sources reported to CDC by serotype and year, 1998-2008

Serotype	1998	1999	2000	2001	2002	2003	2004	2005	2006	2007	2008	Total
Westeinde								1				1
Westerstede		1										1
Westhampton	3	2		3	5	8	6		3	7	3	40
Westhampton var. 15+		2										2
Weston						1						1
Wichita						1						1
Widemarsh		1			2	4	1		2	2	6	18
Wien		1	1	3					3	2		10
Wil		1					1					2
Willamette							1					1
Winneba		1			1		1					3
Woodinville						2					1	3
Worthington	38	28	28	29	27	17	34	21	33	18	38	311
Yaba								1				1
Yehuda						1						1
Yoruba	1				1	1			1			4
Yovokome		1				1						2
Yundum					1							1
Zaiman			1							1	1	3
Zanzibar	1	1				2		1			3	8
Zega								2				2
Zerifin							3					3
Zwickau									1			1
I 1,3,19:-:1,7	1											1
I 3,10:-:1,6										1	1	2
I 3,10:e,h:-			5	6	2				2			15
I 3,10:l,v:-					1				2	2		5
I 3,10:l,z13:-			2	3								5
I 3,10:r:-			2						3			5
I 3,15,34:l,v:-					1							1
I 3,15:l,z13:-						1						1
I 4,12:l,v:-								1				1
I 4,[5],12:-:1,2	1	2	3	3	4	3	3	1	15	3	10	48
I 4,[5],12:-:1,7					1					2		3
I 4,[5],12:b:-	5	8	8	4	12	24	50	72	70	78	97	428
I 4,[5],12:b:- var. L(+) tartrate+								6	27	105	122	260
I 4,[5],12:d:-				3	5				3	5	12	28
I 4,[5],12:e,h:-		2			2	2		2	5	5	4	22
I 4,[5],12:i:-	176	138	233	260	296	548	739	823	1200	1243	980	6636

TABLE 3

Laboratory-confirmed *Salmonella* isolates from human sources reported to CDC by serotype and year, 1998-2008

Serotype	1998	1999	2000	2001	2002	2003	2004	2005	2006	2007	2008	Total
I 4,[5],12:r:-				1	1	4	17	2	1		18	44
I 4,[5],12:z:-	1											1
I 6,14,24:e,h:-						1						1
I 6,14,25:-:l,z13,z28									1			1
I 6,14,25:b:-							2		1	1	1	5
I 6,7:-:1,2				1								1
I 6,7:-:1,5	2	2	3	4	9	31	16	23	15	23	27	155
I 6,7:-:1,6						1						1
I 6,7:b:-				1			1	1				3
I 6,7:c:-									1	2	1	4
I 6,7:e,h:-					2	1			2	1	2	8
I 6,7:i:-									1			1
I 6,7:k:-	2	1	1	3	2	5	3	3	17	6	7	50
I 6,7:l,v:-					2							2
I 6,7:l,w:-			1	2	1				1		3	8
I 6,7:r:-							1	1	2	1	7	12
I 6,7:y:-											3	3
I 6,7:z4,z23:-					1							1
I 6,8,20:z4,z24:-									1			1
I 6,8:-:1,2	1	1	1	1		1		2	1	2	4	14
I 6,8:-:1,5			2		1			1		2		6
I 6,8:-:e,n,x						1						1
I 6,8:b:-								1				1
I 6,8:d:-		2	1		3	1	1		1	9	5	23
I 6,8:e,h:-	1			1		2	3		2	2	6	17
I 6,8:i:-			2								1	3
I 6,8:l,v:-											1	1
I 6,8:z10:-					1						2	3
I 8,20:i:-										1		1
I 8:e,h:-										1		1
I 9,12:-:1,5			1	2	5	1	1		3	4	6	23
I 9,12:a:-					1						3	4
I 9,12:g,z51:-									1			1
I 9,12:l,v:-	1				3	1			2	1	6	14
I 9,12:l,z28:-	4	6	9	6	12	15	1	7	9	14	17	100
I 11:e,h:-							1					1
I 11:r:-						2						2
I 11:z10:-									1			1
I 13,22:-:1,6			1					1		1		3

TABLE 3

Laboratory-confirmed *Salmonella* isolates from human sources reported to CDC by serotype and year, 1998-2008

Serotype	1998	1999	2000	2001	2002	2003	2004	2005	2006	2007	2008	Total
I 13,22:b:-				1	2							3
I 13,22:z:-									1			1
I 13,23:-:1,5							1			2	1	4
I 13,23:b:-						4	3	8	4	81	131	231
I 13,23:c:e,n,z15											1	1
I 13,23:i:-		1			1							2
I 16:d:-			1								1	2
I 16:e,h:-						1						1
I 16:l,v:-	3							2		2		7
I 28:i:-									1			1
I 38:k:-							1				2	3
I 40:-:e,n,x							2					2
I 43:k:-									3			3
I 45:b:-		1							2		5	8
I 47:z4,z23:-			1				1		13	2	3	20
II 4,12,[27]:b:[e,n,x]	1			1		1	1					4
II 4,12,[27]:z:e,n,x		1										1
II 4,12:-:1,6							1					1
II 4,12:a:-				1								1
II 4,12:l,w:e,n,x	1	3	4									8
II 6,7:b:z42								1				1
II 6,7:l,z28:1,5:[z42]	1											1
II 6,7:m,t:-						1						1
II 6,7:z39:1,5,7						1						1
II 6,7:z:1,5									1			1
II 9,12:b:-							1					1
II 9,12:d:e,n,x						1						1
II 9,12:g,m,[s],t:[1,5,7]:[z42]		1		5	1	2						9
II 9,12:g,m,s,t:e,n,x								1				1
II 9,12:g,s,t:e,n,x					1			1				2
II 9,12:l,w:e,n,x					1							1
II 9,12:l,z28:1,5			1									1
II 9,12:m,t:-											1	1
II 9,12:z39:1,7			2							1		3
II 9,46:g,[m],[s],t:[e,n,x]			1									1
II 9,46:m,t:e,n,x							1					1
II 11:g,[m],s,t:z39					1			1				2
II 11:m,t:e,n,x			1									1
II 13,22:z29:1,5					1	3						4

TABLE 3

Laboratory-confirmed *Salmonella* isolates from human sources reported to CDC by serotype and year, 1998-2008

Serotype	1998	1999	2000	2001	2002	2003	2004	2005	2006	2007	2008	Total
II 13,23:d:e,n,x											1	1
II 13,23:g,m,[s],t:[e,n,x]		1			1							2
II 13,23:z:1,5			1									1
II 16:z35:e,n,x							1					1
II 16:z4,z23:-										1		1
II 17:g,t:-			1	2	1							4
II 17:g,t:[e,n,x,z15]											1	1
II 21:b:1,5						3						3
II 21:g,[m],[s],t:-										1	1	2
II 21:z10:[z6]			1	2					1	2	1	7
II 30:l,z28:z6							1	1	1		1	4
II 35:g,m,s,t:-					1							1
II 35:l,z28:-									1			1
II 35:z29:e,n,x						1						1
II 40:c:e,n,x,z15			1									1
II 40:m,t:-					1							1
II 40:z39:1,7									1			1
II 40:z4,z24:z39		1				1						2
II 41:z10:z6		1			1					1	1	4
II 42:b:e,n,x,z15					1			1				2
II 44:z4,z23:-								1				1
II 47:b:1,5	4	6	6	2		5	1	8	2	4	4	42
II 47:b:e,n,x,z15									1	2		3
II 47:b:z6										1		1
II 47:d:z39			2		4							6
II 48:a:z6				2	2	1			1	1	1	8
II 48:b:z6						1						1
II 48:d:1,2							1					1
II 48:d:z6		1	3		4		1	1	2			12
II 48:g,m,t:-		1										1
II 48:k:z39	1				1							2
II 48:z39:z81						1	2	1				4
II 50:b:z6	4	3	1	2	4	4	2	1	2	2	2	27
II 55:k:z39											1	1
II 58:c:z6									2	1		3
II 58:d:z6			1	1			1					3
II 58:l,z13,z28:z6	2						1	1	2	8	7	21
II 60:g,m,t:z6											1	1
IIIa 13,22:z4,z23:-									1	1		2

TABLE 3

Laboratory-confirmed *Salmonella* isolates from human sources reported to CDC by serotype and year, 1998-2008

Serotype	1998	1999	2000	2001	2002	2003	2004	2005	2006	2007	2008	Total
IIIa 13:23:g,z51:-									1		1	2
IIIa 13:23:z4,z23,[z32]:-											2	2
IIIa 13:23:z4,z24:-											1	1
IIIa 17:z29:-											1	1
IIIa 17:z4,z23:-					1							1
IIIa 18:z36:-									1			1
IIIa 18:z4,z23:-					1	7	4	13	19	7	29	80
IIIa 18:z4,z32:-						2			1		2	5
IIIa 21:g,z51:-			1		1			2	2		2	8
IIIa 21:z29:-											2	2
IIIa 21:z36:-									1			1
IIIa 35:g,z51:-								1				1
IIIa 35:z29:-							1				1	2
IIIa 35:z4,z23:-								1	1	1	2	5
IIIa 35:z4,z32:-										2		2
IIIa 40:g,z51:-			1			2					2	5
IIIa 40:z36:-											1	1
IIIa 40:z4,z23:-	1		1	1					2		1	6
IIIa 40:z4,z24:-									1			1
IIIa 41:z4,z23,z32:-											1	1
IIIa 41:z4,z23:-			1		4	2	11	6	11	13	17	65
IIIa 42:g,z51:-										1		1
IIIa 42:z4,z23:-									1	1		2
IIIa 42:z4,z24:-								1			1	2
IIIa 43:z29:-				1				1			1	3
IIIa 43:z4,z24:-								1				1
IIIa 44:z4,z23,z32:-										1		1
IIIa 44:z4,z23:-			5				1				1	7
IIIa 44:z4,z24:-						1			2		2	5
IIIa 44:z4,z32:-											1	1
IIIa 45:z4,z24:-					1							1
IIIa 47:g,z51:-	1											1
IIIa 47:z4,z23:-									3		1	4
IIIa 48:g,z51:-		3	4	2	7	4	3	3	6	8	16	56
IIIa 48:z29:-					1				1	1		3
IIIa 48:z36:-				1					1			2
IIIa 48:z4,z23:-					2							2
IIIa 48:z4,z24:-		1	2	2		3		3	4	3	6	24
IIIa 48:z4,z32:-	1											1

TABLE 3

Laboratory-confirmed *Salmonella* isolates from human sources reported to CDC by serotype and year, 1998-2008

Serotype	1998	1999	2000	2001	2002	2003	2004	2005	2006	2007	2008	Total
IIIa 50:z36:-											1	1
IIIa 50:z4,z23:-										3	1	4
IIIa 50:z4,z32:-									2			2
IIIa 51:g,z51:-										1	1	2
IIIa 51:z4,z23:-	1	1			1		2		1		1	7
IIIa 51:z4,z24:-						1					1	2
IIIa 53:g,z51:-			1					1				2
IIIa 53:z4,z23,z32:-		4	2									6
IIIa 53:z4,z23:-		2					1	3	5		4	15
IIIa 53:z4,z24:-				1				1				2
IIIa 56:z4,z23:-			1					3	1	5	3	13
IIIa 59:z29:-						1						1
IIIa 59:z36:-						1						1
IIIa 62:z4,z23:-					1							1
IIIa 63:z4,z23:-									2			2
IIIb (6),14:z10:z			1									1
IIIb 11:k:z53								1				1
IIIb 11:l,[v],[z13]:z53									1			1
IIIb 13,23:z:1,5											2	2
IIIb 16:z10:e,n,x,z15	2		1	1	2	2	1			4	1	14
IIIb 17:l,v:e,n,x,z15						1						1
IIIb 17:z10:e,n,x,z15					1		1				1	3
IIIb 18:l,[v],[z13]:z							4					4
IIIb 35:i:z									1			1
IIIb 35:k:e,n,x,z15									1			1
IIIb 35:k:z53											1	1
IIIb 35:l,v:z35				1		1					1	3
IIIb 35:r:e,n,x,z15									1		1	2
IIIb 38:(k):-									1			1
IIIb 38:(k):z35			1		1	2			1	1	1	7
IIIb 38:l,v:z53			1	1							2	4
IIIb 38:r:z								1				1
IIIb 42:(k):z35									1			1
IIIb 47:k:z35	1	1			2		1		1	3	4	13
IIIb 47:k:z53											1	1
IIIb 47:r:z53						1						1
IIIb 47:z10:z35										1		1
IIIb 48:-:z35									1			1
IIIb 48:c:z		1		1		2					1	5

TABLE 3

Laboratory-confirmed *Salmonella* isolates from human sources reported to CDC by serotype and year, 1998-2008

Serotype	1998	1999	2000	2001	2002	2003	2004	2005	2006	2007	2008	Total
IIIb 48:i:-									1			1
IIIb 48:i:z		1	3	2	1	2	3	4	8	8	5	37
IIIb 48:r:e,n,x,z15										1		1
IIIb 48:r:z							1				1	2
IIIb 48:z52:z			1			1	1	1		1	1	6
IIIb 50:k:e,n,x,z15	1											1
IIIb 50:k:z	1	1	1		4	6	3		1	1	3	21
IIIb 50:k:z53					1				2	1		4
IIIb 50:l,v:z											1	1
IIIb 50:l,v:z35							1				1	2
IIIb 50:r:-			1									1
IIIb 50:r:1,5,(7)											2	2
IIIb 50:r:z					2	1	3	1	10	3	7	27
IIIb 50:r:z35										1		1
IIIb 50:z52:z35					1	1	1		1	1	1	6
IIIb 50:z:z52				1	1	1						3
IIIb 53:k:e,n,x,z15	1								1			2
IIIb 53:k:z						1						1
IIIb 53:z10:z										1	2	3
IIIb 53:z10:z35								1	1	1	2	5
IIIb 53:z52:z53										1	1	2
IIIb 58:z52:z35	1						1					2
IIIb 60:r:-				1								1
IIIb 60:r:e,n,x,z15	1	1		2	1	4	4	1	4	2	3	23
IIIb 60:r:z	1	1	1		1	2	1				1	8
IIIb 60:z52:z35											1	1
IIIb 60:z52:z53				1					2	2		5
IIIb 61:(k):z53				1								1
IIIb 61:-:1,5,[7]			2	1		2	1	2		6	1	15
IIIb 61:c:-						1						1
IIIb 61:c:1,5,(7)											1	1
IIIb 61:c:z35	2			2	1	2	1	3	1	2	2	16
IIIb 61:i:z					1	1				2	1	5
IIIb 61:i:z35											1	1
IIIb 61:i:z53	1								1			2
IIIb 61:k:1,5,[7]		4	2	3		1		2	2	1		15
IIIb 61:l,[v],[z13]:-					1							1
IIIb 61:l,[v],[z13]:1,5,[7]	2	3			17	2	2	1	11	13	8	59
IIIb 61:l,[v],[z13]:z35						3	1					4

TABLE 3

Laboratory-confirmed *Salmonella* isolates from human sources reported to CDC by serotype and year, 1998-2008

Serotype	1998	1999	2000	2001	2002	2003	2004	2005	2006	2007	2008	Total
IIIb 61:l,v:z								3				3
IIIb 61:r:z				1			1					2
IIIb 61:r:z53	1			2	1	1				1		6
IIIb 61:z52:z53	1					1	1	1	4	2	5	15
IIIb 65:(k):z		1									2	3
IIIb 65:(k):z35										1	1	2
IIIb 65:(k):z53										1		1
IIIb 65:z10:e,n,x,z15									2		1	3
IV 6,7:z4,z23:-	1		2	1		1						5
IV 6,7:z4,z24:-	14	4	15	7	9	8	2		1			60
IV 11:g,z51:-											1	1
IV 11:z4,z23:-	4	2		2	1	1		1	3	2	1	17
IV 16:z4,z23:-		1						1				2
IV 16:z4,z32:-	8	6	13	20	11	4	3	5	7	6	4	87
IV 21:g,z51:-					1							1
IV 21:z4,z23:-			1					2				3
IV 38:z4,z23:-			1									1
IV 40:z4,z23:-											1	1
IV 40:z4,z24:-									1	2	1	4
IV 40:z4,z32:-		2	2					1	1	1		7
IV 43:z36,z38:-			1				1					2
IV 43:z4,z23:-	6	10	3	5		3	7	1	4	1	2	42
IV 43:z4,z32:-	1				2			1				4
IV 44:z36,[z38]:-				1	4	2	1			1	1	10
IV 44:z4,z23:-	7	17	4	5	15	14	7	16	11	8	9	113
IV 44:z4,z24:-	3		1	1			2	1				8
IV 44:z4,z32:-		2	1		3		1	5	7		4	23
IV 45:g,z51:-	3	1	4	5	1	8	8	8	7	13	7	65
IV 48:g,z51:-	48	46	46	46	42	30	13	5	11	31	10	328
IV 48:z4,z23:-						2						2
IV 48:z4,z24:-										1		1
IV 48:z4,z32:-			1	1		1	1		3	15	2	24
IV 50:g,z51:-	6	14	6	16	23	9	9	7	16	8	9	123
IV 50:z4,z23:-	56	64	59	14	7	6	7	6	64	89	40	412
IV 50:z4,z32:-		1							2	1		4
IV 51:z4,z23:-	1											1
<i>S. bongori</i> ser. 48:z35:-			1				1	2			3	7
<i>S. bongori</i> ser. 48:z81:-											3	3
<i>S. bongori</i> ser. 66:z81:-							1					1

TABLE 3

Laboratory-confirmed *Salmonella* isolates from human sources reported to CDC by serotype and year, 1998-2008

Serotype	1998	1999	2000	2001	2002	2003	2004	2005	2006	2007	2008	Total
Partially serotyped	829	914	1013	1288	1244	1362	1324	1684	1448	1187	1647	13940
Rough, mucoid, and/or nonmotile isolates	35	4	14	21	48	52	61	39	110	100	131	615
Unknown	497	385	634	573	2530	3610	1999	1113	4042	3845	5639	24867
Total	33971	32828	33556	31876	34911	37442	35661	36214	40666	39970	46854	403949

TABLE 3a

Partially serotyped laboratory-confirmed *Salmonella* isolates from human sources reported to CDC, by serogroup and year, 1998-2008

Serotype	1998	1999	2000	2001	2002	2003	2004	2005	2006	2007	2008	Total
Group O:11	6		2	46	7	1	10	35	20	4		131
Group O:13	17	17	18	30	22	1	11	22	15	10	15	178
Group O:16	40	44	4	5	2	2	1	7	10		2	117
Group O:17		1		8	2	1		1	5			18
Group O:18	3	4	3	4	4	2		2	2		3	27
Group O:21	1		1	2	1			5	3			13
Group O:28				1	3		4	8	5	1	1	23
Group O:30	1			1	2			5	2	1	1	13
Group O:35									1	1		2
Group O:38									5	1	1	7
Group O:39	1	2							3			6
Group O:40	2	1	8	6	3	1	1	4	6			32
Group O:41	1	1	3	5		1			1			12
Group O:42											1	1
Group O:43			1					1	1			3
Group O:44	5	5	2	9	10	5	4	1		1		42
Group O:45	2	2		4	4	1	2		1	1		17
Group O:47		3		1				1	2	1		8
Group O:48	4	10	8	13	11	5	1	18	2	1	3	76
Group O:50	3	10	17	99	72	4	18	114	47	2		386
Group O:51				2								2
Group O:53	1		1	1	1							4
Group O:56				1								1
Group O:58		1	1	1		1						4
Group O:6,14	1	2	5		5	1		2			1	17
Group O:60	1		1									2
Group O:62		1										1
Group O:63		1										1
Group O:65			1	1	1						1	4
Subspecies I	45	77	76	43	53	99	157	155	101	239	355	1400
Subspecies I, Group A	2	4		2	4	4	1	2	7	7	4	37
Subspecies I, Group B	394	366	503	430	561	447	404	479	528	355	572	5039
Subspecies I, Group C1	77	135	87	108	112	160	141	138	206	194	320	1678
Subspecies I, Group C2	47	46	36	103	87	213	151	191	105	88	120	1187
Subspecies I, Group D1	106	79	95	199	140	257	269	283	200	109	97	1834
Subspecies I, Group D2		1	1		1	1	3	5				12
Subspecies I, Group E1	15	17	39	55	24	39	35	35	16	17	20	312
Subspecies I, Group E4	1	2		1		9	6	7	9	2	2	39
Subspecies I, Group O:11									1			1

TABLE 3a

Partially serotyped laboratory-confirmed *Salmonella* isolates from human sources reported to CDC, by serogroup and year, 1998-2008

Serotype	1998	1999	2000	2001	2002	2003	2004	2005	2006	2007	2008	Total
Subspecies I, Group O:13									4			4
Subspecies I, Group O:30					1							1
Subspecies I, Group O:35					1							1
Subspecies I, Group O:38								1	1			2
Subspecies I, Group O:40									1			1
Subspecies I, Group O:47									1			1
Subspecies I, Group O:48						2					1	3
Subspecies I, Group O:51									1			1
Subspecies II	4	5	8	10	5	2	5	9	3	21	18	90
Subspecies IIIa	12	16	11	16	11	17	24	27	20	9	15	178
Subspecies IIIa, Group O:13						1			1			2
Subspecies IIIa, Group O:40									1			1
Subspecies IIIa, Group O:48									1			1
Subspecies IIIa, Group O:51											2	2
Subspecies IIIa, Group O:61											1	1
Subspecies IIIa, Group O:63					1							1
Subspecies IIIa/IIIb	13	19	36	41	40	32	25	40	29	40	37	352
Subspecies IIIb	6	9	18	6	21	26	16	32	22	17	14	187
Subspecies IIIb, Group O:35	1	4	1	5	6	1	1	1				20
Subspecies IIIb, Group O:38	1		2	1	3	2	1	4				14
Subspecies IIIb, Group O:42								1				1
Subspecies IIIb, Group O:47						1		3	18			22
Subspecies IIIb, Group O:50									1			1
Subspecies IIIb, Group O:53											1	1
Subspecies IIIb, Group O:57					1							1
Subspecies IIIb, Group O:60									1			1
Subspecies IIIb, Group O:61		4	2	5	2				1	2		16
Subspecies IIIb, Group O:65								1		1	1	3
Subspecies IV	16	25	22	23	19	23	33	44	33	58	38	334
Subspecies IV, Group O:11					1							1
Subspecies IV, Group O:43									1			1
Subspecies IV, Group O:50									2			2
Subspecies VI									2	4		6
Total	829	914	1013	1288	1244	1362	1324	1684	1448	1187	1647	13940

TABLE 4

Laboratory-confirmed *Salmonella* isolates from human sources reported to CDC by serotype and geographic region, 2008

Serotype	New England	Mid Atlantic	East North Central	West North Central	South Atlantic	East South Central	West South Central	Mountain	Pacific	Total
Aarhus				1		2		3		6
Aba		1								1
Abaetetuba					1					1
Aberdeen	1				3			2		6
Abony		1							2	3
Adelaide	4	15	10	2	18	4	1	2	16	72
Agbeni		6	10		1					17
Ago	3		1						1	5
Agona	25	86	96	36	132	21	13	83	160	652
Agoueve			1							1
Alachua	2	2	1		2	1	2	2	2	14
Alagbon					1					1
Albany		2	3	1	2	1		3	9	21
Altona			1			1		4		6
Amager								1	6	7
Amager var. 15+				1				1		2
Amounderness		1								1
Amoutive	1				1					2
Amsterdam		1	1							2
Anatum	2	20	28	8	45	20	11	33	54	221
Anatum var. 15+							2	2	8	12
Anecho		2			2		6			10
Anfo		1	1							2
Apapa		1	3		2				1	7
Aqua					1					1
Arechavaleta			1		1		7			9
Assen								1		1
Augustenborg					1				1	2
Azteca					1					1
Baildon		1	2		4		1	1		9
Bardo	2	1		3	14				3	23
Bareilly	2	12	24	8	90	64	35	3	7	245
Barranquilla	7	5	1	1	9			1	2	26
Beaudesert		1			1				1	3
Benin	1									1
Bere			1		12	1				14
Berta	6	35	36	15	63	5	18	5	14	197
Bietri		1								1
Birkenhead									3	3
Blegdam						1				1
Blockley		12		1	1		1	5	30	50

TABLE 4

Laboratory-confirmed *Salmonella* isolates from human sources reported to CDC by serotype and geographic region, 2008

Serotype	New England	Mid Atlantic	East North Central	West North Central	South Atlantic	East South Central	West South Central	Mountain	Pacific	Total
Bonariensis	1	3							1	5
Bournemouth					1					1
Bovismorbificans		7	12	6	20	6	2	5	21	79
Braenderup	18	126	57	52	115	39	95	28	135	665
Brandenburg	2	8	14	6	11		5	11	24	81
Brazil					3	1				4
Brazzaville					1					1
Bredeney		3	8	2	4	1	2	11	1	32
Brezany						1				1
Bron							1			1
Brunei									1	1
Bsilla		2								2
Bukavu						1				1
Burundi	1									1
California						1				1
Cannstatt									2	2
Caracas									1	1
Carmel		1							1	2
Carrau			1		1		1		4	7
Cerro		12	34	1	4	1		5	13	70
Cerro var. 14+								2	5	7
Chailey		1	1							2
Chandans								1		1
Chester		4	4		4	2		8	6	28
Chile					1					1
Choleraesuis	1	7	1		2		6		1	18
Choleraesuis var. Kunzendorf	1			1	1				1	4
Clackamas									5	5
Coeln		1	3	2						6
Colindale	2		1	1	1	1				6
Concord	3	13	3	1	2			4	5	31
Corvallis		3	5	2			2	1	17	30
Cotham		5	2	1	5	1	1	4	4	23
Cubana		2	2	1	1	1		1	1	9
Cullingworth								1		1
Daarle		1								1
Daytona					1	1			1	3
Denver					1		2	3		6
Derby	1	20	24	13	49	2	4	5	41	159
Djugu						2				2
Dublin	6	22	15	6	7		3	11	41	111

TABLE 4

Laboratory-confirmed *Salmonella* isolates from human sources reported to CDC by serotype and geographic region, 2008

Serotype	New England	Mid Atlantic	East North Central	West North Central	South Atlantic	East South Central	West South Central	Mountain	Pacific	Total
Duesseldorf									1	1
Duisburg				1			1		3	5
Durban	1	1	2	1				1	2	8
Durham	2			1						3
Ealing	1	3	2	1	5		2	8	4	26
Eastbourne		1	5	1	3	1	6	1	7	25
Ebrie		1								1
Edinburg		2			1			1	3	7
Enteritidis	407	1778	1044	454	1638	331	247	440	1146	7485
Enugu					1					1
Eppendorf		5								5
Essen					1					1
Farmsen		1								1
Fillmore		1								1
Fischerstrasse		1	3							4
Florida									1	1
Fluntern		1	2		1			1	1	6
Freetown					1					1
Freiburg		1								1
Fresno			1		2				1	4
Friedrichsfelde						1				1
Gaminara	1	6	3		24	18	20	13	4	89
Gatuni	1				3					4
Georgia		1	2							3
Give		13	10	5	18	27	14	10	19	116
Give var. 15+			1	1	1			1		4
Give var. 15+, 34+							2			2
Glostrup		2							2	4
Gnesta			3							3
Goettingen								3		3
Gombe		1								1
Grumpensis		1	2							3
Guinea				2						2
Haardt				1					2	3
Hadar	17	106	41	27	25	12	9	20	63	320
Haifa	1			1	2				1	5
Hartford	1	33	58	20	72	20	3	2	5	214
Hato		1			4					5
Havana	2	16	9	3	9	1	2	8	9	59
Heidelberg	38	178	188	89	240	62	59	114	357	1325
Herston		2								2

TABLE 4

Laboratory-confirmed *Salmonella* isolates from human sources reported to CDC by serotype and geographic region, 2008

Serotype	New England	Mid Atlantic	East North Central	West North Central	South Atlantic	East South Central	West South Central	Mountain	Pacific	Total
Hillegersberg					1					1
Hindmarsh		2		1						3
Hofit									1	1
Holcomb	1	4								5
Homosassa						1				1
Horsham						1				1
Hull		2	4	1	1				1	9
Hvittingfoss	3	9	2	3	8	3	3	4	12	47
Ibadan					1	1	1			3
Idikan		1							2	3
Ilala								1		1
Indiana	1	1							13	15
Infantis	24	128	78	42	82	27	87	57	128	653
Inverness	1	4		1	21	11	5	2	2	47
Irumu		1	3	1			2	1	2	10
Isangi		2		1					1	4
Istanbul	1								1	2
Ituri		1	1			1				3
Jamaica		1								1
Jangwani								1		1
Javiana	26	100	88	36	982	332	216	99	450	2329
Jodhpur	1									1
Johannesburg		6	9	5	8	1			2	31
Kedougou		2								2
Kentucky	6	24	16	7	7	6	1	13	16	96
Kiambu		8	4	3	15	7	28	4	13	82
Kingabwa		2	2			1			2	7
Kingston		1	3			1				5
Kintambo	1	3			3	3		2	1	13
Kisangani			1							1
Kisarawe									1	1
Kisii	1									1
Koketime		3								3
Kokomlemle		1	1							2
Kottbus	1	12	1	1	3				1	19
Krefeld						2				2
Kua		1			1	1				3
Kumasi			2							2
Kunduchi					1					1
Labadi						1				1
Lagos		1								1

TABLE 4

Laboratory-confirmed *Salmonella* isolates from human sources reported to CDC by serotype and geographic region, 2008

Serotype	New England	Mid Atlantic	East North Central	West North Central	South Atlantic	East South Central	West South Central	Mountain	Pacific	Total
Landwasser		1	2							3
Larochelle					2		2			4
Lattenkamp		1	2							3
Lexington								1		1
Limete		1			2					3
Lindenburg		1	2							3
Litchfield	7	59	30	8	41	22	78	22	90	357
Liverpool						4			1	5
Livingstone		2	5		2			1	1	11
Lomalinda		3	2					1	10	16
Lome		1								1
Lomita		1	2		1					4
London	6	3		4	7	1	2	1	5	29
Luciana					2	1		1	1	5
Madelia		1			9					10
Madison						1				1
Manchester									1	1
Manhattan		18	7	2	28	5	1	4	50	115
Maricopa								3		3
Matadi									2	2
Matopeni			1							1
Mbandaka	10	23	30	9	26	16	3	30	87	234
Meleagridis		2	3		2			1	2	10
Menston					1					1
Miami	2	22	14	4	45	6	2	2	5	102
Michigan									3	3
Mikawasima		1								1
Minnesota		3	8			2		4	7	24
Mississippi	5	19	7	3	73	217	118	3	5	450
Molade									2	2
Mono				10						10
Mons					1					1
Monschau		1	4	1	2	2			4	14
Montevideo	30	84	64	94	225	96	110	168	258	1129
Morehead			1						1	2
Mountpleasant					1					1
Mowanjum		1								1
Muenchen	44	29	65	38	320	119	74	55	144	888
Muenster	2	28	12	6	19	1		8	9	85
Napoli									1	1
Newmexico		1						7		8

TABLE 4

Laboratory-confirmed *Salmonella* isolates from human sources reported to CDC by serotype and geographic region, 2008

Serotype	New England	Mid Atlantic	East North Central	West North Central	South Atlantic	East South Central	West South Central	Mountain	Pacific	Total
Newport	93	312	230	172	1292	520	743	268	467	4097
Nigeria				1						1
Nima	1		3	2	1	1		1	2	11
Norwich		9	9	11	17	31	47	14	1	139
Nottingham	1	1		1						3
Oakland					5					5
Offa					1			1		2
Ohio	4	8	5		7	1	1	6	5	37
Ohio var. 14+									1	1
Oranienburg	24	103	94	32	92	44	68	96	115	668
Orientalis	1				1				1	3
Orion		2			1					3
Oslo	1	4	5		4		1	2	18	35
Othmarschen		3	1		1	9			2	16
Overschie		1							1	2
Panama	4	37	19	6	26	3	7	38	32	172
Papuana		2				1				3
Paratyphi A		49	20	7	17	3	8	4	37	145
Paratyphi B		9	23	3	21	2	6	19	11	94
Paratyphi B Var. L(+) tartrate+					3					3
Paratyphi B var. L(+) tartrate+	9	103	25	9	53	17	105	29	120	470
Pensacola					15	2				17
Plymouth	1									1
Pomona	4	33	4		12	4		14	21	92
Poona	24	74	48	14	53	23	20	98	158	512
Portland									1	1
Potengi					1					1
Potsdam		6	2	3				1	10	22
Praha		1								1
Preston		1								1
Putten		5	1	1					3	10
Reading	1	9	9	3	9	1	3	4	8	47
Richmond	1	1								2
Rissen	2	3			5	2	1	2	15	30
Riverside									1	1
Romanby								1		1
Rubislaw	1	5		1	39	41	31	5	1	124
Saarbruecken		1								1
Saintemarie				1						1
Saintpaul	63	164	292	114	363	81	413	294	126	1910
Salford									1	1

TABLE 4

Laboratory-confirmed *Salmonella* isolates from human sources reported to CDC by serotype and geographic region, 2008

Serotype	New England	Mid Atlantic	East North Central	West North Central	South Atlantic	East South Central	West South Central	Mountain	Pacific	Total
Sandiego	6	44	13	4	21	4	3	16	22	133
Saphra							2	1	4	7
Schwarzengrund	41	158	50	2	25	11	10	15	39	351
Senftenberg	4	23	19	10	32	10	13	14	84	209
Shubra	1	2	2		3	1				9
Singapore	1	1	3	3		3			3	14
Soerenga			1	1				3		5
Southbank									1	1
Stanley	4	48	23	14	18	13	10	20	68	218
Stanleyville		6			1	1		2		10
Suelldorf								1		1
Sundsvall		1	1					2		4
Takoradi									2	2
Tallahassee		2	1		2					5
Teitelkebir	1	7		1	2	1		3	12	27
Tennessee	3	27	35	13	17	7	3	12	14	131
Thompson	27	93	53	46	43	29	35	13	74	413
Tucson								2		2
Typhi	22	143	42	28	100	8	14	11	131	499
Typhimurium	237	770	647	279	1405	616	442	434	842	5672
Typhimurium var. 5-	89	207	117	95	142	37	64	131	182	1064
Tyresoe						1				1
Uccle		1								1
Uganda		16	9	10	8	1	10	2	11	67
Uganda var. 15+									1	1
Urbana		8	6		11	5	2	5	15	52
Utah						1				1
Uzaramo		1						3		4
Vancouver									1	1
Victoria			1							1
Virchow	6	27	9	3	10	5	3	10	31	104
Virginia		1	1		4					6
Vleuten									1	1
Vuadens		1								1
Wandsworth		2		2					2	6
Wangata		2							1	3
Waycross			3					1		4
Welikade		1								1
Weltevreden	5	4	15	4	9	1		5	49	92
Weltevreden var. 15+									2	2
Westhampton			1	1	1					3

TABLE 4

Laboratory-confirmed *Salmonella* isolates from human sources reported to CDC by serotype and geographic region, 2008

Serotype	New England	Mid Atlantic	East North Central	West North Central	South Atlantic	East South Central	West South Central	Mountain	Pacific	Total
Widemarsh					1				5	6
Woodinville									1	1
Worthington	2	7	4	2	9	5		5	4	38
Zaiman									1	1
Zanzibar			3							3
I 3,10:-:1,6									1	1
I 4,[5],12:-:1,2		7		1	2					10
I 4,[5],12:b:-	1	32	34	1	13	3		12	1	97
I 4,[5],12:b:- var. L(+) tartrate+	10		37	2	31		1	11	30	122
I 4,[5],12:d:-		1		2	7				2	12
I 4,[5],12:e,h:-					2				2	4
I 4,[5],12:i:-	30	173	172	113	149	131	2	55	155	980
I 4,[5],12:r:-	4		2	3	9					18
I 6,14,25:b:-								1		1
I 6,7:-:1,5		1	11	1	4			6	4	27
I 6,7:c:-	1									1
I 6,7:e,h:-					1			1		2
I 6,7:k:-		1			1			1	4	7
I 6,7:l,w:-					2	1				3
I 6,7:r:-					3				4	7
I 6,7:y:-						1	2			3
I 6,8:-:1,2		1	1		2					4
I 6,8:d:-					2			1	2	5
I 6,8:e,h:-			1		4				1	6
I 6,8:i:-				1						1
I 6,8:l,v:-							1			1
I 6,8:z10:-			1		1					2
I 9,12:-:1,5			1		1			1	3	6
I 9,12:a:-					3					3
I 9,12:l,v:-		1	4					1		6
I 9,12:l,z28:-				1	4	5	1	4	2	17
I 13,23:-:1,5					1					1
I 13,23:b:-	2		1	1	126				1	131
I 13,23:c:e,n,z15			1							1
I 16:d:-			1							1
I 38:k:-					2					2
I 45:b:-			1	1					3	5
I 47:z4,z23:-					1				2	3
II 9,12:m,t:-								1		1
II 13,23:d:e,n,x								1		1
II 17:g,t:[e,n,x,z15]									1	1

TABLE 4

Laboratory-confirmed *Salmonella* isolates from human sources reported to CDC by serotype and geographic region, 2008

Serotype	New England	Mid Atlantic	East North Central	West North Central	South Atlantic	East South Central	West South Central	Mountain	Pacific	Total
II 21:g,[m],[s],t:-									1	1
II 21:z10:[z6]								1		1
II 30:l,z28:z6								1		1
II 41:z10:z6								1		1
II 47:b:1,5					1		1	2		4
II 48:a:z6								1		1
II 50:b:z6								1	1	2
II 55:k:z39			1							1
II 58:l,z13,z28:z6		1	2	2					2	7
II 60:g,m,t:z6				1						1
IIIa 13,23:g,z51:-					1					1
IIIa 13,23:z4,z23,[z32]:-			1	1						2
IIIa 13,23:z4,z24:-							1			1
IIIa 17:z29:-					1					1
IIIa 18:z4,z23:-								5	24	29
IIIa 18:z4,z32:-									2	2
IIIa 21:g,z51:-						1		1		2
IIIa 21:z29:-			2							2
IIIa 35:z29:-								1		1
IIIa 35:z4,z23:-								1	1	2
IIIa 40:g,z51:-								2		2
IIIa 40:z36:-									1	1
IIIa 40:z4,z23:-								1		1
IIIa 41:z4,z23,z32:-									1	1
IIIa 41:z4,z23:-		2	3		2	2		5	3	17
IIIa 42:z4,z24:-							1			1
IIIa 43:z29:-									1	1
IIIa 44:z4,z23:-	1									1
IIIa 44:z4,z24:-									2	2
IIIa 44:z4,z32:-				1						1
IIIa 47:z4,z23:-									1	1
IIIa 48:g,z51:-					12			4		16
IIIa 48:z4,z24:-			1	1	1			1	2	6
IIIa 50:z36:-			1							1
IIIa 50:z4,z23:-					1					1
IIIa 51:g,z51:-								1		1
IIIa 51:z4,z23:-									1	1
IIIa 51:z4,z24:-								1		1
IIIa 53:z4,z23:-			1		1			1	1	4
IIIa 56:z4,z23:-			2						1	3
IIIb 13,23:z:1,5									2	2

TABLE 4

Laboratory-confirmed *Salmonella* isolates from human sources reported to CDC by serotype and geographic region, 2008

Serotype	New England	Mid Atlantic	East North Central	West North Central	South Atlantic	East South Central	West South Central	Mountain	Pacific	Total
IIIb 16:z10:e,n,x,z15						1				1
IIIb 17:z10:e,n,x,z15		1								1
IIIb 35:k:z53				1						1
IIIb 35:l,v:z35					1					1
IIIb 35:r:e,n,x,z15								1		1
IIIb 38:(k):z35									1	1
IIIb 38:l,v:z53					1				1	2
IIIb 47:k:z35		2		1	1					4
IIIb 47:k:z53			1							1
IIIb 48:c:z					1					1
IIIb 48:i:z					2			1	2	5
IIIb 48:r:z			1							1
IIIb 48:z52:z				1						1
IIIb 50:k:z									3	3
IIIb 50:l,v:z	1									1
IIIb 50:l,v:z35			1							1
IIIb 50:r:1,5,(7)			1	1						2
IIIb 50:r:z			1					4	2	7
IIIb 50:z52:z35			1							1
IIIb 53:z10:z								2		2
IIIb 53:z10:z35					1			1		2
IIIb 53:z52:z53			1							1
IIIb 60:r:e,n,x,z15			1	2						3
IIIb 60:r:z		1								1
IIIb 60:z52:z35					1					1
IIIb 61:-:1,5,[7]		1								1
IIIb 61:c:1,5,(7)									1	1
IIIb 61:c:z35	1								1	2
IIIb 61:i:z					1					1
IIIb 61:i:z35									1	1
IIIb 61:l,[v],[z13]:1,5,[7]					2			2	4	8
IIIb 61:z52:z53			2					1	2	5
IIIb 65:(k):z			1						1	2
IIIb 65:(k):z35	1									1
IIIb 65:z10:e,n,x,z15									1	1
IV 11:g,z51:-								1		1
IV 11:z4,z23:-									1	1
IV 16:z4,z32:-		1		1				1	1	4
IV 40:z4,z23:-					1					1
IV 40:z4,z24:-									1	1
IV 43:z4,z23:-				1					1	2

TABLE 4

Laboratory-confirmed *Salmonella* isolates from human sources reported to CDC by serotype and geographic region, 2008

Serotype	New England	Mid Atlantic	East North Central	West North Central	South Atlantic	East South Central	West South Central	Mountain	Pacific	Total
IV 44:z36,[z38]:-						1				1
IV 44:z4,z23:-	1	1	1	2	1			1	2	9
IV 44:z4,z32:-		1						1	2	4
IV 45:g,z51:-	2		1	1	2				1	7
IV 48:g,z51:-			1	1	2	1		1	4	10
IV 48:z4,z32:-					2					2
IV 50:g,z51:-				2	1			2	4	9
IV 50:z4,z23:-	2		2		33				3	40
<i>S. bongori</i> ser. 48:z35:-			1			1		1		3
<i>S. bongori</i> ser. 48:z81:-					1			2		3
Partially serotyped	90	269	133	112	129	31	623	234	26	1647
Rough, mucoid, and/or nonmotile isolates	9	10	27	11	28	2	6	23	15	131
Unknown	209	27	115	157	503	114	4347	75	92	5639
Total	1786	6313	4683	2387	9645	3389	8370	3461	6820	46854

TABLE 5

Laboratory-confirmed *Salmonella* isolates from human sources reported to CDC by serotype, geographic region, and state, 2008

Region=New England

Serotype	Connecticut	Maine	Massachusetts	New Hampshire	Rhode Island	Vermont	Total
Aberdeen	1						1
Adelaide			4				4
Ago			3				3
Agona	1	2	11	4	7		25
Alachua			1	1			2
Amoutive			1				1
Anatum			2				2
Bardo			1	1			2
Bareilly			2				2
Barranquilla			5		2		7
Benin			1				1
Berta	1		5				6
Bonariensis				1			1
Braenderup	1	1	14	1	1		18
Brandenburg		1		1			2
Burundi				1			1
Choleraesuis		1					1
Choleraesuis var. Kunzendorf			1				1
Colindale					2		2
Concord			3				3
Derby			1				1
Dublin	1		1	3	1		6
Durban	1						1
Durham			2				2
Ealing			1				1
Enteritidis	56	31	242	36	38	4	407
Gaminara	1						1
Gatuni			1				1
Hadar	4	2	8	1		2	17
Haifa			1				1
Hartford		1					1
Havana			2				2
Heidelberg		5	25	7	1		38
Holcomb			1				1
Hvittingfoss	1		2				3
Indiana			1				1
Infantis	4		12	4	1	3	24
Inverness			1				1
Istanbul					1		1
Javiana	2		23		1		26

TABLE 5

Laboratory-confirmed *Salmonella* isolates from human sources reported to CDC by serotype, geographic region, and state, 2008

Region=New England

Serotype	Connecticut	Maine	Massachusetts	New Hampshire	Rhode Island	Vermont	Total
Jodhpur			1				1
Kentucky	2		4				6
Kintambo	1						1
Kisii			1				1
Kottbus			1				1
Litchfield		1	5		1		7
London			6				6
Mbandaka	3		5	2			10
Miami			1	1			2
Mississippi		1	2	1	1		5
Montevideo	2	2	21	5			30
Muenchen	10	2	14	4	14		44
Muenster			2				2
Newport	10	6	65	5	7		93
Nima			1				1
Nottingham				1			1
Ohio	1		2	1			4
Oranienburg	3		16	2	2	1	24
Orientalis				1			1
Oslo			1				1
Panama	2	1		1			4
Paratyphi B var. L(+) tartrate+			8		1		9
Plymouth			1				1
Pomona			2		2		4
Poona		3	16	1	4		24
Reading		1					1
Richmond			1				1
Rissen			2				2
Rubislaw			1				1
Saintpaul	5	1	44	9	4		63
Sandiego	1		3		2		6
Schwarzengrund	1		36	3	1		41
Senftenberg			3	1			4
Shubra	1						1
Singapore			1				1
Stanley			3	1			4
Teitelkebir	1						1
Tennessee	2		1				3
Thompson	3		21	1	2		27
Typhi			18	3	1		22

TABLE 5

Laboratory-confirmed *Salmonella* isolates from human sources reported to CDC by serotype, geographic region, and state, 2008

Region=New England

Serotype	Connecticut	Maine	Massachusetts	New Hampshire	Rhode Island	Vermont	Total
Typhimurium	23	9	144	24	33	4	237
Typhimurium var. 5-	10	5	62		12		89
Virchow	3		3				6
Weltevreden	1		3	1			5
Worthington			1	1			2
I 4,[5],12:b:-	1						1
I 4,[5],12:b:- var. L(+) tartrate+	2		8				10
I 4,[5],12:i:-	4		20	3	3		30
I 4,[5],12:r:-			4				4
I 6,7:c:-			1				1
I 13,23:b:-			2				2
IIIa 44:z4,z23:-					1		1
IIIb 50:l,v:z	1						1
IIIb 61:c:z35				1			1
IIIb 65:(k):z35			1				1
IV 44:z4,z23:-			1				1
IV 45:g,z51:-			2				2
IV 50:z4,z23:-	1		1				2
Partially serotyped	2	63	1	3		21	90
Rough, mucoid, and/or nonmotile isolates	1		7		1		9
Unknown	14	133	58		3	1	209
Total	185	272	1006	137	150	36	1786

TABLE 5

Laboratory-confirmed *Salmonella* isolates from human sources reported to CDC by serotype, geographic region, and state, 2008

Region=Mid Atlantic

Serotype	States			Total
	New Jersey	New York	Pennsylvania	
Aba	1			1
Abony			1	1
Adelaide	4	7	4	15
Agbeni		2	4	6
Agona	20	35	31	86
Alachua		1	1	2
Albany		2		2
Amounderness		1		1
Amsterdam	1			1
Anatum	6	12	2	20
Anecho		2		2
Anfo		1		1
Apapa			1	1
Baildon		1		1
Bardo			1	1
Bareilly	1	6	5	12
Barranquilla	2	2	1	5
Beaudesert			1	1
Berta	7	12	16	35
Bietri	1			1
Blockley	1	3	8	12
Bonariensis	2	1		3
Bovismorbificans	3		4	7
Braenderup	24	73	29	126
Brandenburg	4	1	3	8
Bredeney		2	1	3
Bsilla	1		1	2
Carmel		1		1
Cerro	4	6	2	12
Chailey			1	1
Chester	1	2	1	4
Choleraesuis		7		7
Coeln		1		1
Concord		12	1	13
Corvallis		1	2	3
Cotham		5		5
Cubana	1	1		2
Daarle		1		1
Derby	6	12	2	20

TABLE 5

Laboratory-confirmed *Salmonella* isolates from human sources reported to CDC by serotype, geographic region, and state, 2008

Region=Mid Atlantic

Serotype	States			Total
	New Jersey	New York	Pennsylvania	
Dublin	4	11	7	22
Durban	1			1
Ealing	1	2		3
Eastbourne		1		1
Ebrie		1		1
Edinburg		2		2
Enteritidis	387	848	543	1778
Eppendorf		5		5
Farmsen	1			1
Fillmore		1		1
Fischerstrasse	1			1
Fluntern	1			1
Freiburg			1	1
Gaminara		5	1	6
Georgia		1		1
Give	3	6	4	13
Glostrup		2		2
Gombe		1		1
Grumpensis			1	1
Hadar	19	74	13	106
Hartford	5	14	14	33
Hato		1		1
Havana	2	12	2	16
Heidelberg	36	95	47	178
Herston		2		2
Hindmarsh		1	1	2
Holcomb		4		4
Hull	1		1	2
Hvittingfoss	1	3	5	9
Idikan		1		1
Indiana		1		1
Infantis	21	66	41	128
Inverness	1	1	2	4
Irumu	1			1
Isangi			2	2
Ituri	1			1
Jamaica			1	1
Javiana	43	34	23	100
Johannesburg		4	2	6

TABLE 5

Laboratory-confirmed *Salmonella* isolates from human sources reported to CDC by serotype, geographic region, and state, 2008

Region=Mid Atlantic

Serotype	States			Total
	New Jersey	New York	Pennsylvania	
Kedougou	1		1	2
Kentucky	4	17	3	24
Kiambu		7	1	8
Kingabwa	1		1	2
Kingston			1	1
Kintambo	1		2	3
Koketime			3	3
Kokomlemle	1			1
Kottbus	1	11		12
Kua	1			1
Lagos		1		1
Landwasser			1	1
Lattenkamp	1			1
Limete	1			1
Lindenburg		1		1
Litchfield	14	32	13	59
Livingstone		1	1	2
Lomalinda	1	2		3
Lome			1	1
Lomita		1		1
London	2	1		3
Madelia			1	1
Manhattan		13	5	18
Mbandaka	6	14	3	23
Meleagridis	1		1	2
Miami	15	5	2	22
Mikawasima		1		1
Minnesota	1	1	1	3
Mississippi	2	14	3	19
Monschau	1			1
Montevideo	14	42	28	84
Mowanjum			1	1
Muenchen	5	13	11	29
Muenster	2	5	21	28
Newmexico	1			1
Newport	96	120	96	312
Norwich	4	1	4	9
Nottingham		1		1
Ohio		6	2	8

TABLE 5

Laboratory-confirmed *Salmonella* isolates from human sources reported to CDC by serotype, geographic region, and state, 2008

Region=Mid Atlantic

Serotype	States			Total
	New Jersey	New York	Pennsylvania	
Oranienburg	19	54	30	103
Orion		2		2
Oslo	1	1	2	4
Othmarschen		3		3
Overschie		1		1
Panama	7	24	6	37
Papuana		2		2
Paratyphi A	12	27	10	49
Paratyphi B	6	2	1	9
Paratyphi B var. L(+) tartrate+	10	20	73	103
Pomona	4	20	9	33
Poona	14	38	22	74
Potsdam		6		6
Praha			1	1
Preston	1			1
Putten			5	5
Reading	4	4	1	9
Richmond			1	1
Rissen			3	3
Rubislaw	2	2	1	5
Saarbruecken		1		1
Saintpaul	46	79	39	164
Sandiego	10	25	9	44
Schwarzengrund	33	98	27	158
Senftenberg	5	13	5	23
Shubra	1	1		2
Singapore	1			1
Stanley	5	33	10	48
Stanleyville		2	4	6
Sundsvall		1		1
Tallahassee	1	1		2
Teitelkebir	1	2	4	7
Tennessee	3	18	6	27
Thompson	9	48	36	93
Typhi	35	85	23	143
Typhimurium	148	303	319	770
Typhimurium var. 5-	65	59	83	207
Uccle	1			1
Uganda	1	12	3	16

TABLE 5

Laboratory-confirmed *Salmonella* isolates from human sources reported to CDC by serotype, geographic region, and state, 2008

Region=Mid Atlantic

Serotype	States			Total
	New Jersey	New York	Pennsylvania	
Urbana		4	4	8
Uzaramo			1	1
Virchow	5	11	11	27
Virginia		1		1
Vuadens		1		1
Wandsworth			2	2
Wangata		2		2
Welikade	1			1
Weltevreden	1	3		4
Worthington	2	3	2	7
I 4,[5],12:-:1,2		7		7
I 4,[5],12:b:-		32		32
I 4,[5],12:d:-		1		1
I 4,[5],12:i:-		86	87	173
I 6,7:-:1,5		1		1
I 6,7:k:-		1		1
I 6,8:-:1,2		1		1
I 9,12:l,v:-		1		1
II 58:l,z13,z28:z6		1		1
IIIa 41:z4,z23:-		2		2
IIIb 17:z10:e,n,x,z15		1		1
IIIb 47:k:z35	2			2
IIIb 60:r:z	1			1
IIIb 61:-:1,5,[7]		1		1
IV 16:z4,z32:-		1		1
IV 44:z4,z23:-		1		1
IV 44:z4,z32:-		1		1
Partially serotyped	119	91	59	269
Rough, mucoid, and/or nonmotile isolates		9	1	10
Unknown	6	21		27
Total	1379	2993	1941	6313

TABLE 5

Laboratory-confirmed *Salmonella* isolates from human sources reported to CDC by serotype, geographic region, and state, 2008

Region=East North Central

Serotype	States					Total
	Illinois	Indiana	Michigan	Ohio	Wisconsin	
Adelaide	6	1	2		1	10
Agbeni	4		6			10
Ago			1			1
Agona	32	5	44	3	12	96
Agoueve			1			1
Alachua					1	1
Albany	2				1	3
Altona	1					1
Amsterdam	1					1
Anatum	5	4	16		3	28
Anfo	1					1
Apapa	1			2		3
Arechavaleta		1				1
Baildon	1				1	2
Bareilly	6	9	5	1	3	24
Barranquilla	1					1
Bere	1					1
Berta	19	1	11	3	2	36
Bovismorbificans	3	5	1		3	12
Braenderup	34	5	9	2	7	57
Brandenburg	7	2	4		1	14
Bredeney			6		2	8
Carrau		1				1
Cerro	4	1	29			34
Chailey	1					1
Chester		2	2			4
Choleraesuis					1	1
Coeln	2				1	3
Colindale		1				1
Concord		2			1	3
Corvallis	5					5
Cotham		1	1			2
Cubana					2	2
Derby	9	3	10		2	24
Dublin	1		7		7	15
Durban			2			2
Ealing			2			2
Eastbourne	2		2	1		5
Enteritidis	329	161	431	7	116	1044
Fischerstrasse			3			3

TABLE 5

Laboratory-confirmed *Salmonella* isolates from human sources reported to CDC by serotype, geographic region, and state, 2008

Region=East North Central

Serotype	States					Total
	Illinois	Indiana	Michigan	Ohio	Wisconsin	
Fluntern					2	2
Fresno		1				1
Gaminara	1				2	3
Georgia			2			2
Give	2	2	4		2	10
Give var. 15+			1			1
Gnesta			2		1	3
Grumpensis	1		1			2
Hadar	8	4	19	1	9	41
Hartford	19	11	16		12	58
Havana		1	7		1	9
Heidelberg	47	22	90	4	25	188
Hull			2		2	4
Hvittingfoss	1	1				2
Infantis	35	10	19		14	78
Irumu	1				2	3
Ituri			1			1
Javiana	24	13	42	1	8	88
Johannesburg	7		2			9
Kentucky	8	1	5		2	16
Kiambu	1	1	2			4
Kingabwa			2			2
Kingston	2	1				3
Kisangani	1					1
Kokomlele	1					1
Kottbus	1					1
Kumasi	2					2
Landwasser	2					2
Lattenkamp					2	2
Lindenburg					2	2
Litchfield	4	2	19	2	3	30
Livingstone			4		1	5
Lomalinda			2			2
Lomita	2					2
Manhattan	2	3			2	7
Matopeni	1					1
Mbandaka	7	4	13	1	5	30
Meleagridis	1		1		1	3
Miami	1	3	10			14
Minnesota	3	1	3		1	8

TABLE 5

Laboratory-confirmed *Salmonella* isolates from human sources reported to CDC by serotype, geographic region, and state, 2008

Region=East North Central

Serotype	States					Total
	Illinois	Indiana	Michigan	Ohio	Wisconsin	
Mississippi	3	1	2	1		7
Monschau	2		2			4
Montevideo	26	5	13		20	64
Morehead	1					1
Muenchen	27	13	18		7	65
Muenster	1	1	8		2	12
Newport	65	28	88	3	46	230
Nima	1				2	3
Norwich	3	2	4			9
Ohio	2		2		1	5
Oranienburg	47	12	24	2	9	94
Oslo	3			1	1	5
Othmarschen					1	1
Panama	7	4	4	1	3	19
Paratyphi A	5	1	11		3	20
Paratyphi B	4		19			23
Paratyphi B var. L(+) tartrate+	20	3			2	25
Pomona			4			4
Poona	10	5	26	1	6	48
Potsdam	1	1				2
Putten					1	1
Reading	3	1	2	1	2	9
Saintpaul	145	31	87	1	28	292
Sandiego	8	1	2		2	13
Schwarzengrund	9	4	32		5	50
Senftenberg	8	2	5		4	19
Shubra	1			1		2
Singapore			2		1	3
Soerenga	1					1
Stanley	10	1	8	1	3	23
Sundsvall		1				1
Tallahassee			1			1
Tennessee	7	7	16		5	35
Thompson	14	8	22	1	8	53
Typhi	19		16		7	42
Typhimurium	177	104	270	11	85	647
Typhimurium var. 5-	19	22	43	3	30	117
Uganda	3	2	1		3	9
Urbana		3		1	2	6
Victoria	1					1

TABLE 5

Laboratory-confirmed *Salmonella* isolates from human sources reported to CDC by serotype, geographic region, and state, 2008

Region=East North Central

Serotype	States					Total
	Illinois	Indiana	Michigan	Ohio	Wisconsin	
Virchow	4	1	2		2	9
Virginia					1	1
Waycross	1		2			3
Weltevreden	5	1	7		2	15
Westhampton		1				1
Worthington	1	1	1	1		4
Zanzibar		1			2	3
I 4,[5],12:b:-	10		23		1	34
I 4,[5],12:b:- var. L(+) tartrate+		28			9	37
I 4,[5],12:i:-	56	32	47		37	172
I 4,[5],12:r:-	1				1	2
I 6,7:-:1,5	10				1	11
I 6,8:-:1,2					1	1
I 6,8:e,h:-	1					1
I 6,8:z10:-					1	1
I 9,12:-:1,5					1	1
I 9,12:l,v:-	3				1	4
I 13,23:b:-					1	1
I 13,23:c:e,n,z15	1					1
I 16:d:-	1					1
I 45:b:-	1					1
II 55:k:z39	1					1
II 58:l,z13,z28:z6	2					2
IIIa 13,23:z4,z23,[z32]:-					1	1
IIIa 21:z29:-	2					2
IIIa 41:z4,z23:-	1	1			1	3
IIIa 48:z4,z24:-	1					1
IIIa 50:z36:-	1					1
IIIa 53:z4,z23:-	1					1
IIIa 56:z4,z23:-	1				1	2
IIIb 47:k:z53					1	1
IIIb 48:r:z	1					1
IIIb 50:l,v:z35	1					1
IIIb 50:r:1,5,(7)					1	1
IIIb 50:r:z	1					1
IIIb 50:z52:z35	1					1
IIIb 53:z52:z53	1					1
IIIb 60:r:e,n,x,z15					1	1
IIIb 61:z52:z53	1				1	2
IIIb 65:(k):z	1					1

TABLE 5

Laboratory-confirmed *Salmonella* isolates from human sources reported to CDC by serotype, geographic region, and state, 2008

Region=East North Central

Serotype	States					Total
	Illinois	Indiana	Michigan	Ohio	Wisconsin	
IV 44:z4,z23:-					1	1
IV 45:g,z51:-	1					1
IV 48:g,z51:-	1					1
IV 50:z4,z23:-	1	1				2
bongori ser. 48:z35:-	1					1
Partially serotyped	28		99	3	3	133
Rough, mucoid, and/or nonmotile isolates	14	4	3		6	27
Unknown			103	12		115
Total	1474	620	1883	73	633	4683

TABLE 5

Laboratory-confirmed *Salmonella* isolates from human sources reported to CDC by serotype, geographic region, and state, 2008

Region=West North Central

Serotype	States							Total
	Iowa	Kansas	Minnesota	Missouri	Nebraska	North Dakota	South Dakota	
Aarhus		1						1
Adelaide	1		1					2
Agona	5		22	7	1		1	36
Albany							1	1
Amager var. 15+			1					1
Anatum	3		2	3				8
Bardo		1				2		3
Bareilly	1		1	6				8
Barranquilla				1				1
Berta	5	2	4	1			3	15
Blockley							1	1
Bovismorbificans	4			2				6
Braenderup	19	14	8	5	1	4	1	52
Brandenburg	4		2					6
Bredeney			1	1				2
Cerro			1					1
Choleraesuis var. Kunzendorf			1					1
Coeln	2							2
Colindale	1							1
Concord				1				1
Corvallis			2					2
Cotham	1							1
Cubana						1		1
Derby	2	1	5	5				13
Dublin	2		3	1				6
Duisburg			1					1
Durban						1		1
Durham			1					1
Ealing				1				1
Eastbourne			1					1
Enteritidis	92	60	151	108	6	24	13	454
Give	1	3				1		5
Give var. 15+						1		1
Guinea	2							2
Haardt			1					1
Hadar	7	2	11	4	1	1	1	27
Haifa			1					1
Hartford	8	1	9	2				20
Havana			2	1				3

TABLE 5

Laboratory-confirmed *Salmonella* isolates from human sources reported to CDC by serotype, geographic region, and state, 2008

Region=West North Central

Serotype	States							Total
	Iowa	Kansas	Minnesota	Missouri	Nebraska	North Dakota	South Dakota	
Heidelberg	19	17	9	38		1	5	89
Hindmarsh			1					1
Hull				1				1
Hvittingfoss				3				3
Infantis	13	6	13	6		2	2	42
Inverness				1				1
Irumu			1					1
Isangi			1					1
Javiana	3	2	5	23	1		2	36
Johannesburg	2			3				5
Kentucky	2		3	1			1	7
Kiambu			3					3
Kottbus	1							1
Litchfield	1	1	2	4				8
London			2				2	4
Manhattan			1	1				2
Mbandaka	4		3	1			1	9
Miami		2		2				4
Mississippi				3				3
Mono	10							10
Monschau			1					1
Montevideo	10	9	53	14		7	1	94
Muenchen	5	6	19	8				38
Muenster	1	1		4				6
Newport	26	55	37	42	3	2	7	172
Nigeria			1					1
Nima			2					2
Norwich	1	1		9				11
Nottingham						1		1
Oranienburg	11	6	9	5			1	32
Panama	1		3	2				6
Paratyphi A		1	4	1		1		7
Paratyphi B			1				2	3
Paratyphi B var. L(+) tartrate+	3	1		5				9
Poona	5		6	2		1		14
Potsdam			2			1		3
Putten			1					1
Reading		1	1	1				3
Rubislaw				1				1

TABLE 5

Laboratory-confirmed *Salmonella* isolates from human sources reported to CDC by serotype, geographic region, and state, 2008

Region=West North Central

Serotype	States							Total
	Iowa	Kansas	Minnesota	Missouri	Nebraska	North Dakota	South Dakota	
Saintemarie			1					1
Saintpaul	6	18	52	35	1	1	1	114
Sandiego	1		3					4
Schwarzengrund			1	1				2
Senftenberg		3	5	1			1	10
Singapore			3					3
Soerenga				1				1
Stanley	7	1	3	3				14
Teitelkebir			1					1
Tennessee	3	1	5	4				13
Thompson	7	8	8	23				46
Typhi	11	1	7	1	1	6	1	28
Typhimurium	30	40	61	91	6	30	21	279
Typhimurium var. 5-	29	7	37	21			1	95
Uganda	4	1	4	1				10
Virchow	1	1	1					3
Wandsworth	2							2
Weltevreden	1		2	1				4
Westhampton				1				1
Worthington	1			1				2
I 4, _[5] ,12:-:1,2			1					1
I 4, _[5] ,12:b:-			1					1
I 4, _[5] ,12:b:- var. L(+) tartrate+			2					2
I 4, _[5] ,12:d:-			1	1				2
I 4, _[5] ,12:i:-	29	3	45	36				113
I 4, _[5] ,12:r:-			1	2				3
I 6,7:-:1,5			1					1
I 6,8:i:-				1				1
I 9,12:l,z28:-			1					1
I 13,23:b:-			1					1
I 45:b:-			1					1
II 58:l,z13,z28:z6			1			1		2
II 60:g,m,t:z6		1						1
IIIa 13,23:z4,z23,[z32]:-			1					1
IIIa 44:z4,z32:-			1					1
IIIa 48:z4,z24:-				1				1
IIIb 35:k:z53				1				1
IIIb 47:k:z35				1				1
IIIb 48:z52:z		1						1

TABLE 5

Laboratory-confirmed *Salmonella* isolates from human sources reported to CDC by serotype, geographic region, and state, 2008

Region=West North Central

Serotype	States							Total
	Iowa	Kansas	Minnesota	Missouri	Nebraska	North Dakota	South Dakota	
IIIb 50:r:1,5,(7)			1					1
IIIb 60:r:e,n,x,z15		2						2
IV 16:z4,z32:-							1	1
IV 43:z4,z23:-				1				1
IV 44:z4,z23:-			1	1				2
IV 45:g,z51:-							1	1
IV 48:g,z51:-						1		1
IV 50:g,z51:-		1	1					2
Partially serotyped	9	33	3	5	61		1	112
Rough, mucoid, and/or nonmotile isolates		2	7	2				11
Unknown	17	2	12	3	111	9	3	157
Total	436	320	693	570	193	99	76	2387

TABLE 5

Laboratory-confirmed *Salmonella* isolates from human sources reported to CDC by serotype, geographic region, and state, 2008

Region=South Atlantic

Serotype	States								Total
	Delaware	Florida	Georgia	Maryland	North Carolina	South Carolina	Virginia	West Virginia	
Abaetetuba					1				1
Aberdeen				1			2		3
Adelaide	1	2	6	1	6	1	1		18
Agbeni			1						1
Agona	2		16	5	90		17	2	132
Alachua			1			1			2
Alagbon						1			1
Albany			1	1					2
Amoutive					1				1
Anatum	1	2	12	4	17	2	6	1	45
Anecho					2				2
Apapa				1			1		2
Aqua					1				1
Arechavaleta			1						1
Augustenborg								1	1
Azteca					1				1
Baildon		2	1				1		4
Bardo		2	1	5	3		3		14
Bareilly	1	1	12	3	51	3	18	1	90
Barranquilla			1	1	3	1	3		9
Beaudesert					1				1
Bere			1		6	4	1		12
Berta		2	10	8	26		13	4	63
Blockley							1		1
Bournemouth					1				1
Bovismorbificans				2	11		4	3	20
Braenderup	2	1	37	4	30	17	18	6	115
Brandenburg			4	1	1	1	4		11
Brazil			3						3
Brazzaville								1	1
Bredeney					4				4
Carrau			1						1
Cerro		1			1		2		4
Chester				2	2				4
Chile								1	1
Choleraesuis			1	1					2
Choleraesuis var. Kunzendorf			1						1
Colindale				1					1
Concord			1				1		2

TABLE 5

Laboratory-confirmed *Salmonella* isolates from human sources reported to CDC by serotype, geographic region, and state, 2008

Region=South Atlantic

Serotype	States								Total
	Delaware	Florida	Georgia	Maryland	North Carolina	South Carolina	Virginia	West Virginia	
Cotham			2			1	2		5
Cubana							1		1
Daytona			1						1
Denver					1				1
Derby	1	1	5	5	30	2	4	1	49
Dublin	2		1	1		2		1	7
Ealing			2	1			1	1	5
Eastbourne			2				1		3
Edinburg			1						1
Enteritidis	25	10	260	309	553	171	263	47	1638
Enugu			1						1
Essen				1					1
Fluntern							1		1
Freetown			1						1
Fresno							2		2
Gaminara			6		10	8			24
Gatuni					2	1			3
Give			2	1	7	8			18
Give var. 15+				1					1
Hadar			6	1	9	2	5	2	25
Haifa							2		2
Hartford	2		13	14	7	8	25	3	72
Hato			1		2			1	4
Havana				1	2		6		9
Heidelberg	7	4	36	19	69	19	80	6	240
Hillegersberg						1			1
Hull			1						1
Hvittingfoss	3		1	2	2				8
Ibadan			1						1
Infantis	2		19	8	26	10	11	6	82
Inverness	1		3		1	14	2		21
Javiana	8	17	296	22	429	161	49		982
Johannesburg			3		2		3		8
Kentucky			2	1	2		2		7
Kiambu			6	1		4	4		15
Kintambo					2		1		3
Kottbus					2		1		3
Kua					1				1
Kunduchi								1	1

TABLE 5

Laboratory-confirmed *Salmonella* isolates from human sources reported to CDC by serotype, geographic region, and state, 2008

Region=South Atlantic

Serotype	States								Total
	Delaware	Florida	Georgia	Maryland	North Carolina	South Carolina	Virginia	West Virginia	
Larochelle	1							1	2
Limete			2						2
Litchfield	1		8	3	15	4	10		41
Livingstone						2			2
Lomita								1	1
London					6		1		7
Luciana			1				1		2
Madelia			1		2	6			9
Manhattan		1	4	3	18	2			28
Mbandaka	1		6	1	10	3	4	1	26
Meleagridis			1				1		2
Menston					1				1
Miami		6	18	1	12	6	1	1	45
Mississippi			20		40	13			73
Mons				1					1
Monschau					2				2
Montevideo	5	3	60	3	96	28	23	7	225
Mountpleasant		1							1
Muenchen		2	135	3	105	60	13	2	320
Muenster		1	1		16		1		19
Newport	20	17	340	41	581	173	113	7	1292
Nima			1						1
Norwich	1		2	2	5		7		17
Oakland								5	5
Offa				1					1
Ohio			1		6				7
Oranienburg	2	1	7	7	52	5	16	2	92
Orientalis							1		1
Orion			1						1
Oslo			1	1	2				4
Othmarschen		1							1
Panama		3	3	5			15		26
Paratyphi A			4	3	4		6		17
Paratyphi B		2		7	1			11	21
Paratyphi B Var. L(+) tartrate+				3					3
Paratyphi B var. L(+) tartrate+			9		37	6	1		53
Pensacola			1		13		1		15
Pomona					6	3	3		12
Poona	3	1	8	3	24	2	5	7	53

TABLE 5

Laboratory-confirmed *Salmonella* isolates from human sources reported to CDC by serotype, geographic region, and state, 2008

Region=South Atlantic

Serotype	States								Total
	Delaware	Florida	Georgia	Maryland	North Carolina	South Carolina	Virginia	West Virginia	
Potengi			1						1
Reading			2	1	4	1	1		9
Rissen					2		2	1	5
Rubislaw		4	19	2	8	4	2		39
Saintpaul	1	7	113	51	114	27	47	3	363
Sandiego	1	1	3	2	2	6	6		21
Schwarzengrund		1	10	2	6	4	1	1	25
Senftenberg	2	1	5	2	12		9	1	32
Shubra			2				1		3
Stanley	3		1	3	4	5		2	18
Stanleyville			1						1
Tallahassee		2							2
Teitelkebir			1	1					2
Tennessee			4	1	3	2	6	1	17
Thompson	2	2	1	8	11	4	13	2	43
Typhi		11	9	17	29	4	29	1	100
Typhimurium	20	16	185	88	589	130	325	52	1405
Typhimurium var. 5-	1		101	40					142
Uganda			1	2	3		2		8
Urbana		3	3			3		2	11
Virchow			1	1	1	3	4		10
Virginia			3	1					4
Weltevreden		3	1			1	4		9
Westhampton								1	1
Widemarsh			1						1
Worthington			1		6	2			9
I 4,[5],12:-:1,2					2				2
I 4,[5],12:b:-			4		9				13
I 4,[5],12:b:- var. L(+) tartrate+	6		6		1		18		31
I 4,[5],12:d:-							7		7
I 4,[5],12:e,h:-					2				2
I 4,[5],12:i:-	11	1	48	31	25		28	5	149
I 4,[5],12:r:-			3	2	2		2		9
I 6,7:-:1,5				1	2		1		4
I 6,7:e,h:-	1								1
I 6,7:k:-				1					1
I 6,7:l,w:-			2						2
I 6,7:r:-							3		3
I 6,8:-:1,2			1	1					2

TABLE 5

Laboratory-confirmed *Salmonella* isolates from human sources reported to CDC by serotype, geographic region, and state, 2008

Region=South Atlantic

Serotype	States								Total
	Delaware	Florida	Georgia	Maryland	North Carolina	South Carolina	Virginia	West Virginia	
I 6,8:d:-				1			1		2
I 6,8:e,h:-	1			2			1		4
I 6,8:z10:-					1				1
I 9,12:-:1,5					1				1
I 9,12:a:-					3				3
I 9,12:l,z28:-			2	1		1			4
I 13,23:-:1,5			1						1
I 13,23:b:-			84		33	6	3		126
I 38:k:-			2						2
I 47:z4,z23:-			1						1
II 47:b:1,5							1		1
IIIa 13,23:g,z51:-					1				1
IIIa 17:z29:-				1					1
IIIa 41:z4,z23:-				1			1		2
IIIa 48:g,z51:-		1	5				6		12
IIIa 48:z4,z24:-			1						1
IIIa 50:z4,z23:-		1							1
IIIa 53:z4,z23:-			1						1
IIIb 35:l,v:z35							1		1
IIIb 38:l,v:z53			1						1
IIIb 47:k:z35							1		1
IIIb 48:c:z			1						1
IIIb 48:i:z				1			1		2
IIIb 53:z10:z35							1		1
IIIb 60:z52:z35	1								1
IIIb 61:i:z							1		1
IIIb 61:l,[v],[z13]:1,5,[7]			2						2
IV 40:z4,z23:-		1							1
IV 44:z4,z23:-							1		1
IV 45:g,z51:-							2		2
IV 48:g,z51:-		1		1					2
IV 48:z4,z32:-		2							2
IV 50:g,z51:-				1					1
IV 50:z4,z23:-		29	2				2		33
<i>S. bongori</i> ser. 48:z81:-							1		1
Partially serotyped		12	63	2	2	42	3	5	129
Rough, mucoid, and/or nonmotile isolates			8	3	8	3	6		28
Unknown	6	42	159	64	205	12	1	14	503
Total	148	225	2285	853	3563	1016	1330	225	9645

TABLE 5

Laboratory-confirmed *Salmonella* isolates from human sources reported to CDC by serotype, geographic region, and state, 2008

Region=East South Central

Serotype	States				Total
	Alabama	Kentucky	Mississippi	Tennessee	
Aarhus			2		2
Adelaide			1	3	4
Agona	7	6	1	7	21
Alachua				1	1
Albany				1	1
Altona			1		1
Anatum	5	2		13	20
Bareilly	16	9	7	32	64
Bere	1				1
Berta			1	4	5
Blegdam			1		1
Bovismorbificans		5		1	6
Braenderup	20	2	4	13	39
Brazil	1				1
Bredeney				1	1
Brezany		1			1
Bukavu		1			1
California				1	1
Cerro	1				1
Chester		1	1		2
Colindale				1	1
Cotham				1	1
Cubana		1			1
Daytona	1				1
Derby	1		1		2
Djugu			2		2
Eastbourne	1				1
Enteritidis	123	81	27	100	331
Friedrichsfelde			1		1
Gaminara	6		12		18
Give	9	1	15	2	27
Hadar	4	3		5	12
Hartford	6	8	1	5	20
Havana				1	1
Heidelberg	26	12	5	19	62
Homosassa	1				1
Horsham			1		1
Hvittingfoss	2			1	3
Ibadan		1			1
Infantis	12	5	5	5	27

TABLE 5

Laboratory-confirmed *Salmonella* isolates from human sources reported to CDC by serotype, geographic region, and state, 2008

Region=East South Central

Serotype	States				Total
	Alabama	Kentucky	Mississippi	Tennessee	
Inverness	8		3		11
Ituri		1			1
Javiana	151	11	132	38	332
Johannesburg	1				1
Kentucky	2	2		2	6
Kiambu	1		4	2	7
Kingabwa				1	1
Kingston	1				1
Kintambo	2			1	3
Krefeld		2			2
Kua	1				1
Labadi		1			1
Litchfield	9	3	3	7	22
Liverpool				4	4
London		1			1
Luciana			1		1
Madison	1				1
Manhattan	1	1		3	5
Mbandaka	10	4		2	16
Miami	3		1	2	6
Minnesota	1	1			2
Mississippi	73		123	21	217
Monschau		1		1	2
Montevideo	67	4	17	8	96
Muenchen	83	4	28	4	119
Muenster	1				1
Newport	206	52	162	100	520
Nima	1				1
Norwich	5	2	12	12	31
Ohio			1		1
Oranienburg	26	8	3	7	44
Othmarschen			9		9
Panama	2			1	3
Papuana				1	1
Paratyphi A	3				3
Paratyphi B	1		1		2
Paratyphi B var. L(+) tartrate+	5	9	1	2	17
Pensacola	1			1	2
Pomona	4				4
Poona	5	9		9	23

TABLE 5

Laboratory-confirmed *Salmonella* isolates from human sources reported to CDC by serotype, geographic region, and state, 2008

Region=East South Central

Serotype	States				Total
	Alabama	Kentucky	Mississippi	Tennessee	
Reading	1				1
Rissen				2	2
Rubislaw	12		28	1	41
Saintpaul	53	5	9	14	81
Sandiego	1	1		2	4
Schwarzengrund	1	2		8	11
Senftenberg	1	4	1	4	10
Shubra	1				1
Singapore	1	1	1		3
Stanley	5	5	2	1	13
Stanleyville	1				1
Telelkebir				1	1
Tennessee	1	1	1	4	7
Thompson	16	10		3	29
Typhi	4			4	8
Typhimurium	245	103	132	136	616
Typhimurium var. 5-		11	26		37
Tyresoe			1		1
Uganda				1	1
Urbana	1		3	1	5
Utah			1		1
Virchow	2	3			5
Weltevreden	1				1
Worthington		4		1	5
I 4,[5],12:b:-			3		3
I 4,[5],12:i:-	62	11	15	43	131
I 6,7:l,w:-	1				1
I 6,7:y:-	1				1
I 9,12:l,z28:-			5		5
IIIa 21:g,z51:-		1			1
IIIa 41:z4,z23:-		1	1		2
IIIb 16:z10:e,n,x,z15		1			1
IV 44:z36,[z38]:-		1			1
IV 48:g,z51:-		1			1
bongori ser. 48:z35:-				1	1
Partially serotyped	3	22	3	3	31
Rough, mucoid, and/or nonmotile isolates			2		2
Unknown	48	5	13	48	114
Total	1380	448	837	724	3389

TABLE 5

Laboratory-confirmed *Salmonella* isolates from human sources reported to CDC by serotype, geographic region, and state, 2008

Region=West South Central

Serotype	States				Total
	Arkansas	Louisiana	Oklahoma	Texas	
Adelaide				1	1
Agona	2	2	6	3	13
Alachua			2		2
Anatum	1	5	3	2	11
Anatum var. 15+				2	2
Anecho			6		6
Arechavaleta			7		7
Baildon			1		1
Bareilly	14	11	10		35
Berta			17	1	18
Blockley		1			1
Bovismorbificans	1			1	2
Braenderup	1	7	65	22	95
Brandenburg	1		2	2	5
Bredeney			2		2
Bron			1		1
Carrau		1			1
Choleraesuis				6	6
Corvallis		1		1	2
Cotham		1			1
Denver			2		2
Derby	1	1	2		4
Dublin			2	1	3
Duisburg	1				1
Ealing		1	1		2
Eastbourne			6		6
Enteritidis	48	13	96	90	247
Gaminara		20			20
Give		13		1	14
Give var. 15+, 34+			2		2
Hadar	3	1	4	1	9
Hartford	1		1	1	3
Havana			2		2
Heidelberg	16	4	26	13	59
Hvitittingfoss	1	2			3
Ibadan	1				1
Infantis	3	9	38	37	87
Inverness		5			5
Irumu			2		2
Javiana	99	31	42	44	216

TABLE 5

Laboratory-confirmed *Salmonella* isolates from human sources reported to CDC by serotype, geographic region, and state, 2008

Region=West South Central

Serotype	States				Total
	Arkansas	Louisiana	Oklahoma	Texas	
Kentucky				1	1
Kiambu	7	2	16	3	28
Larochelle			2		2
Litchfield	2	1	75		78
London	2				2
Manhattan		1			1
Mbandaka	2			1	3
Miami				2	2
Mississippi	16	67	10	25	118
Montevideo	7	51	25	27	110
Muenchen	4	22	34	14	74
Newport	181	84	379	99	743
Norwich	10		30	7	47
Ohio		1			1
Oranienburg	5	11	21	31	68
Oslo			1		1
Panama			1	6	7
Paratyphi A				8	8
Paratyphi B	1			5	6
Paratyphi B var. L(+) tartrate+			100	5	105
Poona	1		14	5	20
Reading	1		2		3
Rissen	1				1
Rubislaw	14	10	6	1	31
Saintpaul	22	8	106	277	413
Sandiego	2	1			3
Saphra		2			2
Schwarzengrund	2	2	4	2	10
Senftenberg	1		8	4	13
Stanley	2		6	2	10
Tennessee	1		2		3
Thompson	6	1	22	6	35
Typhi	3		6	5	14
Typhimurium	105	20	261	56	442
Typhimurium var. 5-				64	64
Uganda			10		10
Urbana		2			2
Virchow			2	1	3
I 4,[5],12:b:- var. L(+) tartrate+		1			1
I 4,[5],12:i:-				2	2

TABLE 5

Laboratory-confirmed *Salmonella* isolates from human sources reported to CDC by serotype, geographic region, and state, 2008

Region=West South Central

Serotype	States				Total
	Arkansas	Louisiana	Oklahoma	Texas	
I 6,7:y:-		2			2
I 6,8:l,v:-		1			1
I 9,12:l,z28:-		1			1
II 47:b:1,5				1	1
IIIa 13,23:z4,z24:-				1	1
IIIa 42:z4,z24:-		1			1
Partially serotyped	2		62	559	623
Rough, mucoid, and/or nonmotile isolates	1	2	3		6
Unknown	19	25		4303	4347
Total	614	448	1556	5752	8370

TABLE 5

Laboratory-confirmed *Salmonella* isolates from human sources reported to CDC by serotype, geographic region, and state, 2008

Region=Mountain

Serotype	States								Total
	Arizona	Colorado	Idaho	Montana	Nevada	New Mexico	Utah	Wyoming	
Aarhus	3								3
Aberdeen		1					1		2
Adelaide	1					1			2
Agona	30	19	6		6	12	9	1	83
Alachua	2								2
Albany	2						1		3
Altona	1	1	2						4
Amager					1				1
Amager var. 15+					1				1
Anatum	13	10			1	2	7		33
Anatum var. 15+	2								2
Assen		1							1
Baildon		1							1
Bareilly	2				1				3
Barranquilla		1							1
Berta	1	1			2		1		5
Blockley	4		1						5
Bovismorbificans	1					4			5
Braenderup	12	4			2	5	4	1	28
Brandenburg	2	4			1	2	2		11
Bredeney	3	1			7				11
Cerro	1				3	1			5
Cerro var. 14+		1			1				2
Chandans	1								1
Chester	3	1			3		1		8
Concord	3	1							4
Corvallis					1				1
Cotham		1			2		1		4
Cubana	1								1
Cullingworth		1							1
Denver	2					1			3
Derby	1	1	1		1		1		5
Dublin	6	1	1				3		11
Durban		1							1
Ealing	4	1	1				2		8
Eastbourne		1							1
Edinburg					1				1
Enteritidis	88	123	41		44	35	108	1	440
Fluntern		1							1

TABLE 5

Laboratory-confirmed *Salmonella* isolates from human sources reported to CDC by serotype, geographic region, and state, 2008

Region=Mountain

Serotype	States								Total
	Arizona	Colorado	Idaho	Montana	Nevada	New Mexico	Utah	Wyoming	
Gaminara	11	1			1				13
Give	2	2	1		1	1	3		10
Give var. 15+						1			1
Goettingen	3								3
Hadar	2	3	1		5	2	7		20
Hartford		1				1			2
Havana	3	1	2				2		8
Heidelberg	47	19	7		11	12	18		114
Hvittingfoss	2	2							4
Ilala							1		1
Infantis	23	7	2		1	5	18	1	57
Inverness			1				1		2
Irumu							1		1
Jangwani		1							1
Javiana	41	9	2		2	33	12		99
Kentucky	7	4					2		13
Kiambu	2				1	1			4
Kintambo	1						1		2
Lexington	1								1
Litchfield	7	4			1	1	9		22
Livingstone	1								1
Lomalinda						1			1
London		1							1
Luciana	1								1
Manhattan	1	2				1			4
Maricopa	2						1		3
Mbandaka	5	8	1		2	5	9		30
Meleagridis						1			1
Miami		2							2
Minnesota	1					1	2		4
Mississippi		1					2		3
Montevideo	115	17	3		5	14	14		168
Muenchen	20	8	3		2	20	2		55
Muenster	1	1	2		1		3		8
Newmexico	7								7
Newport	119	57	13		9	46	23	1	268
Nima		1							1
Norwich	7	1			3	3			14
Offa		1							1

TABLE 5

Laboratory-confirmed *Salmonella* isolates from human sources reported to CDC by serotype, geographic region, and state, 2008

Region=Mountain

Serotype	States								Total
	Arizona	Colorado	Idaho	Montana	Nevada	New Mexico	Utah	Wyoming	
Ohio	3	1			1		1		6
Oranienburg	67	12			4	6	7		96
Oslo		1					1		2
Panama	28	3	2		1	4			38
Paratyphi A	1	2	1						4
Paratyphi B			1		11	7			19
Paratyphi B var. L(+) tartrate+	12	6	1		4		6		29
Pomona	8	2	1		1	1	1		14
Poona	74	4			3	7	10		98
Potsdam		1							1
Reading	1	2					1		4
Rissen	1						1		2
Romanby		1							1
Rubislaw	1					1	3		5
Saintpaul	84	27	7		15	153	8		294
Sandiego	6	4	2			2	2		16
Saphra	1								1
Schwarzengrund	7	3			3		2		15
Senftenberg	4	3	1		5		1		14
Soerenga	2					1			3
Stanley	8	5			4	1	2		20
Stanleyville		1					1		2
Suelldorf		1							1
Sundsvall	2								2
Teitelkebir	2	1							3
Tennessee	2	4					6		12
Thompson	7	1			2		3		13
Tucson	2								2
Typhi	3	3		1		2	2		11
Typhimurium	95	193	30		19	45	49	3	434
Typhimurium var. 5-	33	40	10		2	11	35		131
Uganda		1					1		2
Urbana	1	1				1	2		5
Uzaramo			1		2				3
Virchow	3	4			1	1	1		10
Waycross			1						1
Weltevreden	1	2	1				1		5
Worthington	3	1					1		5
I 4,[5],12:b:-	11				1				12

TABLE 5

Laboratory-confirmed *Salmonella* isolates from human sources reported to CDC by serotype, geographic region, and state, 2008

Region=Mountain

Serotype	States								Total
	Arizona	Colorado	Idaho	Montana	Nevada	New Mexico	Utah	Wyoming	
I 4,[5],12:b:- var. L(+) tartrate+	11								11
I 4,[5],12:i:-	27	10	6		9	3			55
I 6,14,25:b:-	1								1
I 6,7:-:1,5	5	1							6
I 6,7:e,h:-							1		1
I 6,7:k:-		1							1
I 6,8:d:-	1								1
I 9,12:-:1,5					1				1
I 9,12:l,v:-	1								1
I 9,12:l,z28:-	4								4
II 9,12:m,t:-		1							1
II 13,23:d:e,n,x					1				1
II 21:z10:[z6]							1		1
II 30:l,z28:z6							1		1
II 41:z10:z6					1				1
II 47:b:1,5	2								2
II 48:a:z6	1								1
II 50:b:z6	1								1
IIIa 18:z4,z23:-	1	2			2				5
IIIa 21:g,z51:-		1							1
IIIa 35:z29:-	1								1
IIIa 35:z4,z23:-					1				1
IIIa 40:g,z51:-	2								2
IIIa 40:z4,z23:-	1								1
IIIa 41:z4,z23:-	1	1					3		5
IIIa 48:g,z51:-	2				1	1			4
IIIa 48:z4,z24:-			1						1
IIIa 51:g,z51:-	1								1
IIIa 51:z4,z24:-	1								1
IIIa 53:z4,z23:-	1								1
IIIb 35:r:e,n,x,z15		1							1
IIIb 48:i:z							1		1
IIIb 50:r:z	4								4
IIIb 53:z10:z							2		2
IIIb 53:z10:z35							1		1
IIIb 61:l,[v],[z13]:1,5,[7]	1	1							2
IIIb 61:z52:z53		1							1
IV 11:g,z51:-			1						1
IV 16:z4,z32:-		1							1

TABLE 5

Laboratory-confirmed *Salmonella* isolates from human sources reported to CDC by serotype, geographic region, and state, 2008

Region=Mountain

Serotype	States								Total
	Arizona	Colorado	Idaho	Montana	Nevada	New Mexico	Utah	Wyoming	
IV 44:z4,z23:-		1							1
IV 44:z4,z32:-		1							1
IV 48:g,z51:-							1		1
IV 50:g,z51:-					1		1		2
bongori ser. 48:z35:-					1				1
bongori ser. 48:z81:-							2		2
Partially serotyped	4			132	5	64		29	234
Rough, mucoid, and/or nonmotile isolates	17	3			1	2			23
Unknown	1	32		4		3	2	33	75
Total	1186	720	158	137	226	528	436	70	3461

TABLE 5

Laboratory-confirmed *Salmonella* isolates from human sources reported to CDC by serotype, geographic region, and state, 2008

Region=Pacific

Serotype	States					Total
	Alaska	California	Hawaii	Oregon	Washington	
Abony		1		1		2
Adelaide		14	2			16
Ago		1				1
Agona	2	122	3	15	18	160
Alachua		2				2
Albany		9				9
Amager		2	3		1	6
Anatum		44		4	6	54
Anatum var. 15+		8				8
Apapa	1					1
Augustenborg		1				1
Bardo		2		1		3
Bareilly		7				7
Barranquilla		2				2
Beaudesert				1		1
Berta		13	1			14
Birkenhead			3			3
Blockley		28			2	30
Bonariensis		1				1
Bovismorbificans		17		3	1	21
Braenderup	2	118	3	2	10	135
Brandenburg		23			1	24
Bredeney					1	1
Brunei			1			1
Cannstatt		2				2
Caracas		1				1
Carmel		1				1
Carrau		4				4
Cerro		11	1	1		13
Cerro var. 14+		5				5
Chester		4			2	6
Choleraesuis		1				1
Choleraesuis var. Kunzendorf			1			1
Clackamas		1		3	1	5
Concord		4			1	5
Corvallis		5	10	1	1	17
Cotham		4				4
Cubana		1				1
Daytona					1	1
Derby	5	24	7	2	3	41

TABLE 5

Laboratory-confirmed *Salmonella* isolates from human sources reported to CDC by serotype, geographic region, and state, 2008

Region=Pacific

Serotype	States					Total
	Alaska	California	Hawaii	Oregon	Washington	
Dublin		36	1	2	2	41
Duesseldorf					1	1
Duisburg		3				3
Durban		2				2
Ealing		3			1	4
Eastbourne		3		3	1	7
Edinburg		3				3
Enteritidis	14	852	42	89	149	1146
Florida		1				1
Fluntern		1				1
Fresno		1				1
Gaminara		4				4
Give		12	4	1	2	19
Glostrup		2				2
Haardt		2				2
Hadar		46	7	3	7	63
Haifa				1		1
Hartford		4			1	5
Havana		7		2		9
Heidelberg	2	292	8	30	25	357
Hofit		1				1
Hull					1	1
Hvittingfoss		10		1	1	12
Idikan		2				2
Indiana		13				13
Infantis	2	102	7	10	7	128
Inverness		2				2
Irumu		2				2
Isangi		1				1
Istanbul		1				1
Javiana		444	1	1	4	450
Johannesburg		2				2
Kentucky		13		1	2	16
Kiambu		13				13
Kingabwa				2		2
Kintambo		1				1
Kisarawe		1				1
Kottbus			1			1
Litchfield		63		12	15	90
Liverpool		1				1

TABLE 5

Laboratory-confirmed *Salmonella* isolates from human sources reported to CDC by serotype, geographic region, and state, 2008

Region=Pacific

Serotype	States					Total
	Alaska	California	Hawaii	Oregon	Washington	
Livingstone		1				1
Lomalinda		10				10
London		5				5
Luciana		1				1
Manchester					1	1
Manhattan		49		1		50
Matadi		2				2
Mbandaka	1	74	1	7	4	87
Meleagridis		1		1		2
Miami	1	2		1	1	5
Michigan		3				3
Minnesota		7				7
Mississippi		4			1	5
Molade		2				2
Monschau		3		1		4
Montevideo	1	196	9	19	33	258
Morehead		1				1
Muenchen	1	100	26	10	7	144
Muenster		6	1		2	9
Napoli		1				1
Newport	4	407	9	15	32	467
Nima		2				2
Norwich		1				1
Ohio		4		1		5
Ohio var. 14+		1				1
Oranienburg		97	4	12	2	115
Orientalis		1				1
Oslo		12	6			18
Othmarschen	2					2
Overschie		1				1
Panama		29	2		1	32
Paratyphi A		32		1	4	37
Paratyphi B			10	1		11
Paratyphi B var. L(+) tartrate+	1	90		10	19	120
Pomona		20		1		21
Poona		129		8	21	158
Portland				1		1
Potsdam		8			2	10
Putten		1		1	1	3
Reading		6			2	8

TABLE 5

Laboratory-confirmed *Salmonella* isolates from human sources reported to CDC by serotype, geographic region, and state, 2008

Region=Pacific

Serotype	States					Total
	Alaska	California	Hawaii	Oregon	Washington	
Rissen	1	12			2	15
Riverside		1				1
Rubislaw		1				1
Saintpaul		80	1	24	21	126
Salford			1			1
Sandiego		20			2	22
Saphra		3		1		4
Schwarzengrund		26	12	1		39
Senftenberg	1	57	1	11	14	84
Singapore		3				3
Southbank		1				1
Stanley		54	3	4	7	68
Takoradi		2				2
Teitelkebir		12				12
Tennessee	1	8		3	2	14
Thompson		61	1	5	7	74
Typhi	1	94	12	3	21	131
Typhimurium	10	592	52	81	107	842
Typhimurium var. 5-		182				182
Uganda		7	2		2	11
Uganda var. 15+		1				1
Urbana		5		4	6	15
Vancouver			1			1
Virchow	3	20	1	3	4	31
Vleuten		1				1
Wandsworth		2				2
Wangata		1				1
Weltevreden		14	31		4	49
Weltevreden var. 15+		1	1			2
Widemarsh		5				5
Woodinville		1				1
Worthington		4				4
Zaiman		1				1
I 3,10:-:1,6		1				1
I 4,[5],12:b:-		1				1
I 4,[5],12:b:- var. L(+) tartrate+		28		2		30
I 4,[5],12:d:-		2				2
I 4,[5],12:e,h:-		2				2
I 4,[5],12:i:-	4	109	4	17	21	155
I 6,7:-:1,5				4		4

TABLE 5

Laboratory-confirmed *Salmonella* isolates from human sources reported to CDC by serotype, geographic region, and state, 2008

Region=Pacific

Serotype	States					Total
	Alaska	California	Hawaii	Oregon	Washington	
I 6,7:k:-		4				4
I 6,7:r:-		4				4
I 6,8:d:-		2				2
I 6,8:e,h:-				1		1
I 9,12:-:1,5		2		1		3
I 9,12:l,z28:-		1		1		2
I 13,23:b:-		1				1
I 45:b:-		3				3
I 47:z4,z23:-		2				2
II 17:g,t:[e,n,x,z15]		1				1
II 21:g,[m],[s],t:-		1				1
II 50:b:z6		1				1
II 58:l,z13,z28:z6		1		1		2
IIIa 18:z4,z23:-		23			1	24
IIIa 18:z4,z32:-					2	2
IIIa 35:z4,z23:-		1				1
IIIa 40:z36:-		1				1
IIIa 41:z4,z23,z32:-		1				1
IIIa 41:z4,z23:-		3				3
IIIa 43:z29:-		1				1
IIIa 44:z4,z24:-		2				2
IIIa 47:z4,z23:-		1				1
IIIa 48:z4,z24:-		2				2
IIIa 51:z4,z23:-		1				1
IIIa 53:z4,z23:-		1				1
IIIa 56:z4,z23:-		1				1
IIIb 13,23:z:1,5				2		2
IIIb 38:(k):z35		1				1
IIIb 38:l,v:z53				1		1
IIIb 48:i:z		2				2
IIIb 50:k:z		1		2		3
IIIb 50:r:z		2				2
IIIb 61:c:1,5,(7)		1				1
IIIb 61:c:z35					1	1
IIIb 61:i:z35		1				1
IIIb 61:l,[v],[z13]:1,5,[7]		4				4
IIIb 61:z52:z53		2				2
IIIb 65:(k):z		1				1
IIIb 65:z10:e,n,x,z15		1				1
IV 11:z4,z23:-		1				1

TABLE 5

Laboratory-confirmed *Salmonella* isolates from human sources reported to CDC by serotype, geographic region, and state, 2008

Region=Pacific

Serotype	States					Total
	Alaska	California	Hawaii	Oregon	Washington	
IV 16:z4,z32:-		1				1
IV 40:z4,z24:-		1				1
IV 43:z4,z23:-					1	1
IV 44:z4,z23:-		2				2
IV 44:z4,z32:-					2	2
IV 45:g,z51:-		1				1
IV 48:g,z51:-		1		2	1	4
IV 50:g,z51:-		3		1		4
IV 50:z4,z23:-		3				3
Partially serotyped		3	10	1	12	26
Rough, mucoid, and/or nonmotile isolates		12		2	1	15
Unknown	3	77	5	5	2	92
Total	63	5335	312	466	644	6820

FIGURE 2

Isolation rates of laboratory-confirmed *Salmonella* serotype Enteritidis from human sources reported to CDC per 100,000 population by region: 1970 - 2008

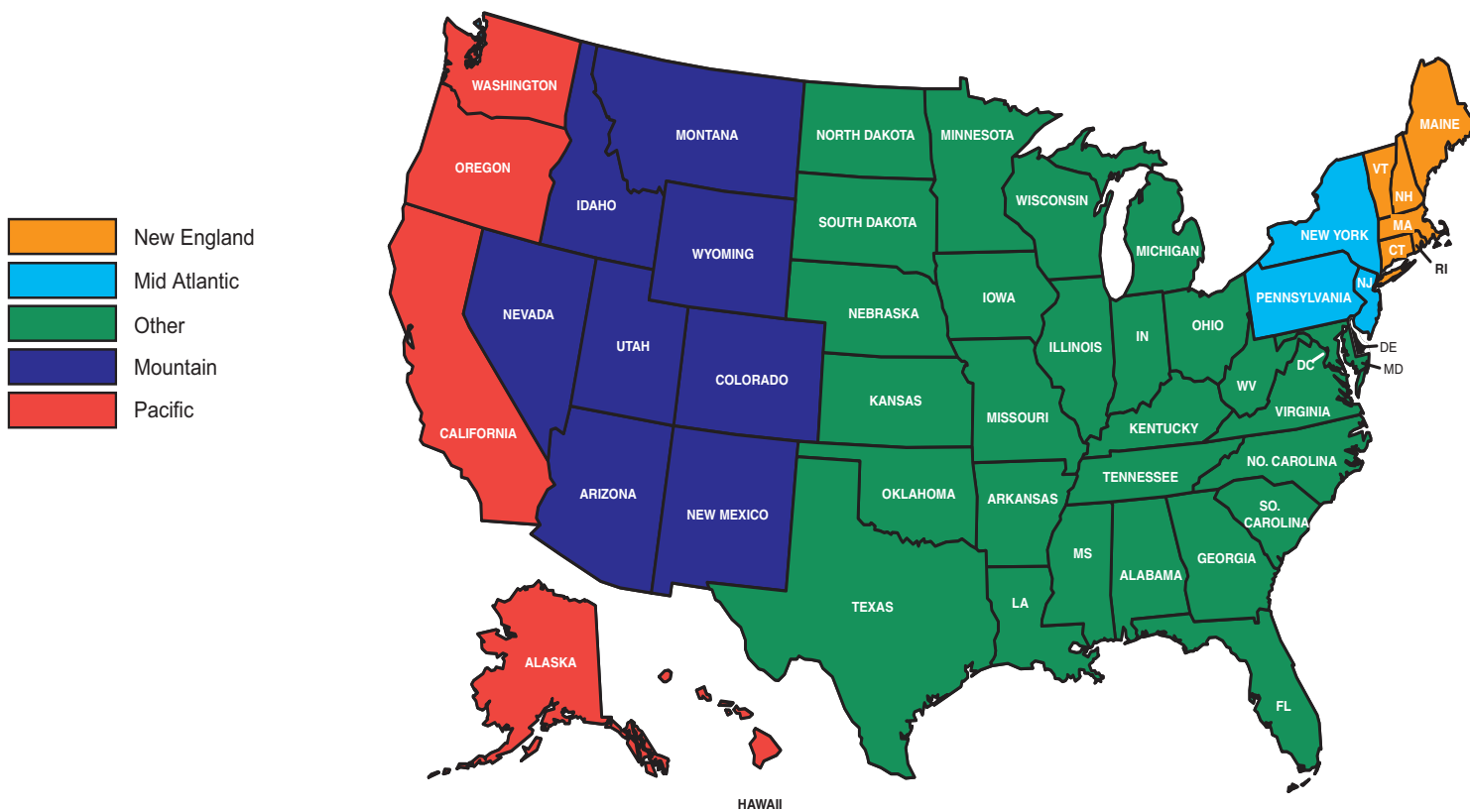
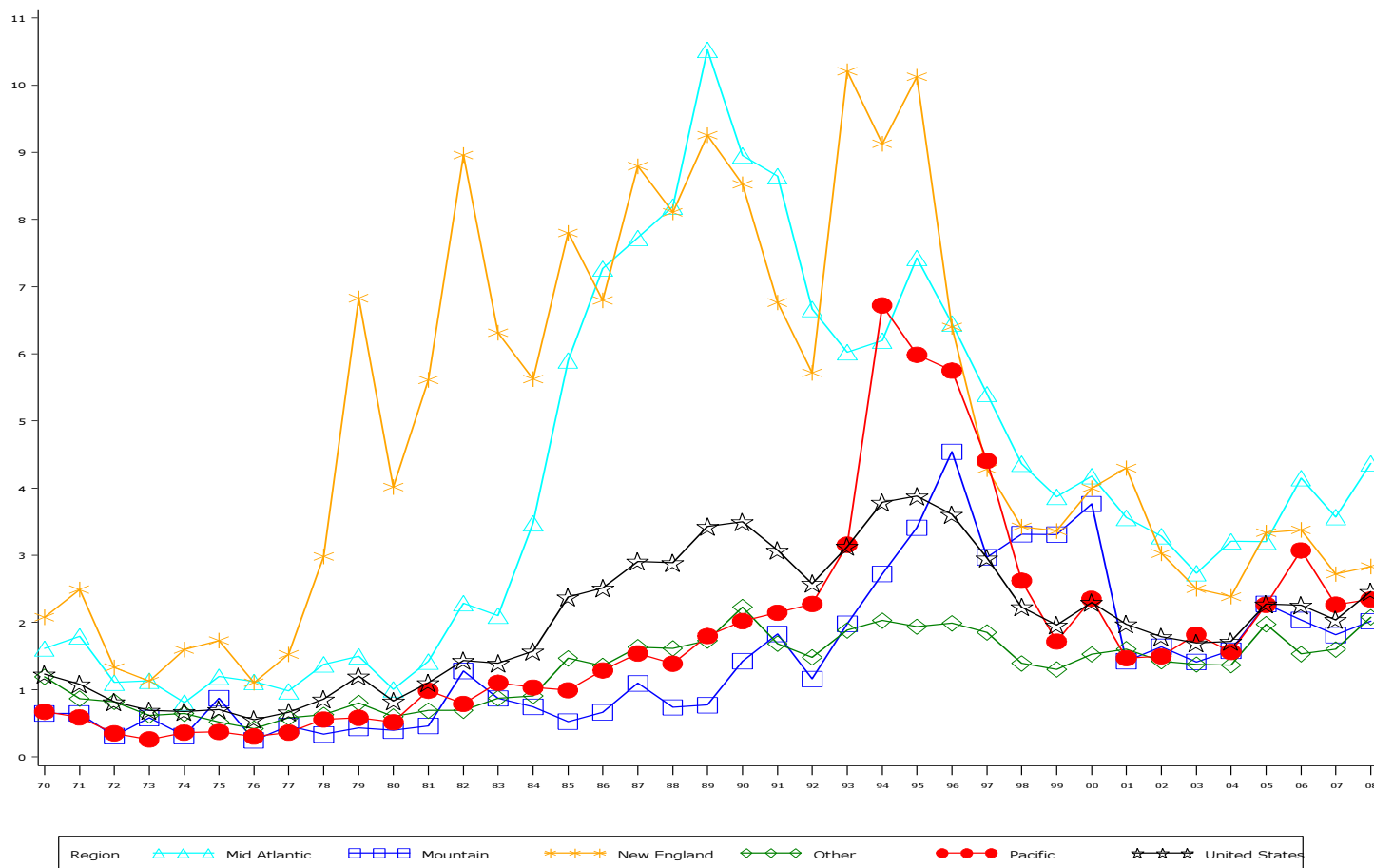


FIGURE 3

Isolation rates of the top 4 laboratory-confirmed *Salmonella* serotypes from human sources reported to CDC per 100,000 population: 1970 - 2008

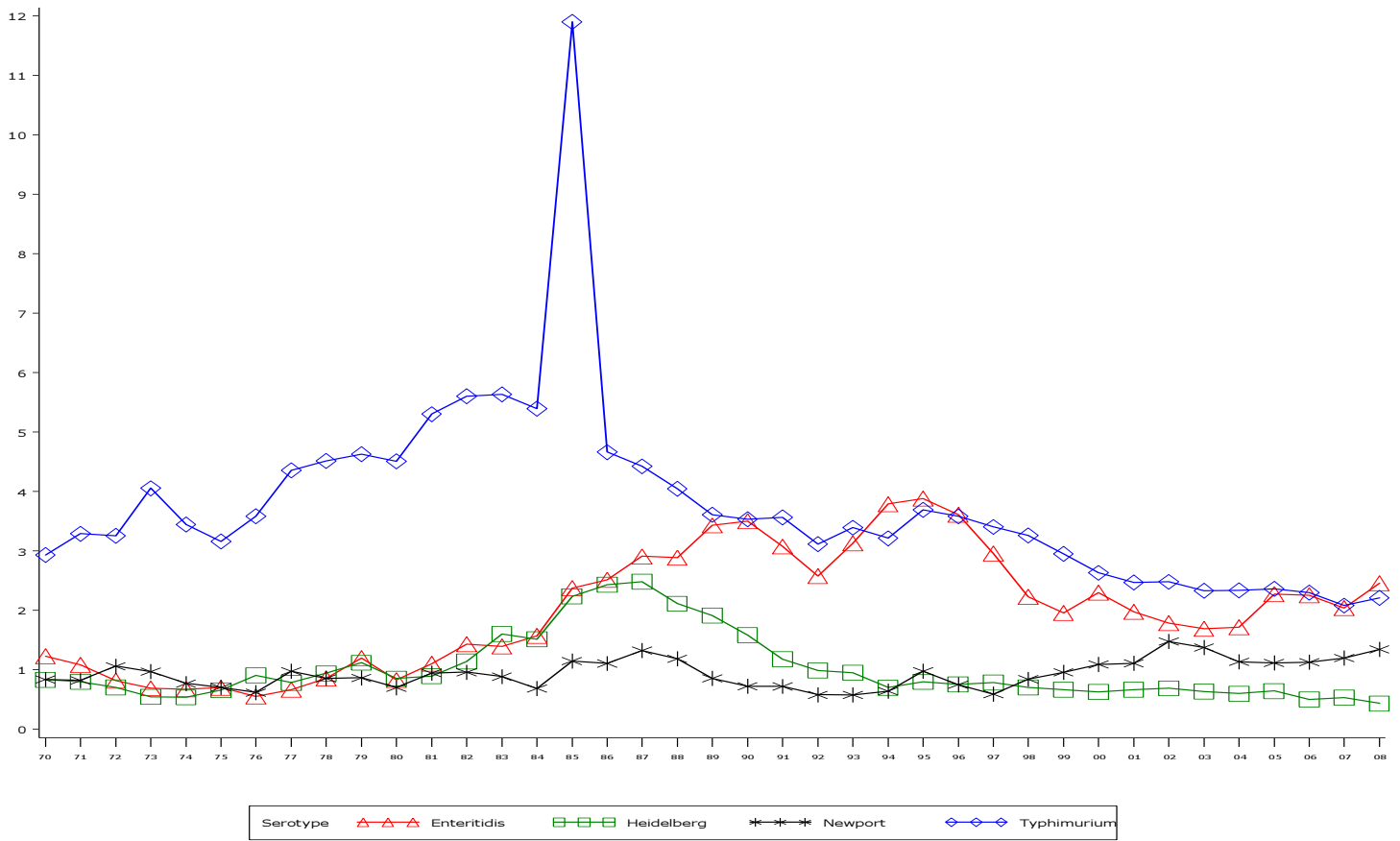


TABLE 6

Laboratory-confirmed *Salmonella* isolates from clinical and non-clinical nonhuman sources reported to the National Veterinary Services Laboratories, with the 20 most frequently reported serotypes listed individually, 2008

Clinical Nonhuman 2008				Non-Clinical Nonhuman 2008			
Rank	Serotype	Reported	Percent	Rank	Serotype	Reported	Percent
1	Typhimurium *	1573	21.0	1	Kentucky	1777	19.5
2	Newport	472	6.3	2	Heidelberg	1275	14.0
3	Cerro	442	5.9	3	Enteritidis	950	10.4
4	Dublin	373	5.0	4	Typhimurium *	706	7.7
5	Agona	337	4.5	5	Senftenberg	478	5.2
6	Derby	304	4.1	6	Montevideo	374	4.1
7	Montevideo	278	3.7	7	Hadar	187	2.1
8	Heidelberg	247	3.3	8	Schwarzengrund	182	2.0
9	Senftenberg	228	3.1	9	I 4,[5],12:i:-	179	2.0
10	Muenster	207	2.8	10	Agona	170	1.9
11	Kentucky	194	2.6	11	Mbandaka	170	1.9
12	Anatum	189	2.5	12	Newport	164	1.8
13	Infantis	166	2.2	13	Anatum	135	1.5
14	I 4,[5],12:i:-	134	1.8	14	Thompson	126	1.4
15	Meleagridis	125	1.7	15	Muenster	119	1.3
16	Choleraesuis **	123	1.6	16	Saintpaul	113	1.2
17	Javiana	106	1.4	17	London	111	1.2
18	Muenchen	106	1.4	18	Infantis	106	1.2
19	Mbandaka	105	1.4	19	Muenchen	101	1.1
20	Enteritidis	104	1.4	20	Cerro	97	1.1
	Sub Total	5813	77.8		Sub Total	7520	82.4
	All other serotyped	1549	20.7		All other serotyped	1535	16.8
	Rough, mucoid, and/or nonmotile isolates	111	1.5		Rough, mucoid, and/or nonmotile isolates	69	0.8
	Sub Total	1660	22.2		Sub Total	1604	17.6
	Total	7473	100		Total	9124	100
Note: ----- * Typhimurium includes var. 5- (formerly var. Copenhagen) ** Choleraesuis includes var. Decatur and Kunzendorf				Note ----- * Typhimurium includes var. 5- (formerly var. Copenhagen)			

TABLE 7

Laboratory-confirmed *Salmonella* isolates from clinical nonhuman sources reported to the National Veterinary Services Laboratories by serotype and source, 2008

Serotype	All Others	Bovine	Chicken	Equine	Other birds / Wild animals	Other Domestic Animals /Environment	Porcine	Reptile	Turkey	Total
Abony				1						1
Adelaide	1	1					5	1	1	9
Ago								1		1
Agona	6	81	2	22	6	13	183		24	337
Agoueve								1		1
Alachua		1					5		2	8
Albany		2			1	1			10	14
Albert					2	1				3
Altona		7		2			4	1		14
Amager		1								1
Amsterdam	3			1						4
Amsterdam var. 15+					4				1	5
Anatum	3	57		59	7	1	47		15	189
Anatum var. 15+		12		12		2	3			29
Anatum var. 15+,34+				1			1			2
Baildon								1		1
Bareilly	2	1		12		3				18
Barranquilla		1					1			2
Berta		1		4			6		1	12
Blockley				1						1
Bovismorbificans		7		12	2	3	14			38
Braenderup	18	5	2	35	2	4	5			71
Brandenburg	1	6		2			32		3	44
Bredeney	1	6		1	2	1	6		13	30
California							1			1
Cannstatt				4						4
Cerro	25	395		8	7	1	5	1		442
Chailey							1			1
Choleraesuis var. Kunzendorf	7				3		113			123
Cubana	1	1		1	1				1	5
Derby	3	17			1		282		1	304
Dublin	4	350			1	15	3			373
Ealing							1			1
Enteritidis	10	4	35	6	27	10	9	2	1	104
Florida	1									1
Fresno		2								2
Gaminara				1			1	1		3

TABLE 7

Laboratory-confirmed *Salmonella* isolates from clinical nonhuman sources reported to the National Veterinary Services Laboratories by serotype and source, 2008

Serotype	All Others	Bovine	Chicken	Equine	Other birds / Wild animals	Other Domestic Animals /Environment	Porcine	Reptile	Turkey	Total
Give		34		7	13	1	5			60
Give var. 15+		6			1		1			8
Give var. 15+,34+				1						1
Hadar	4	1	1			3	3	2	34	48
Hartford	1	4	1	7	1		1			15
Havana	7	5		6			17			35
Heidelberg	17	28	12		14	3	157		16	247
Holcomb				6						6
Indiana					2					2
Infantis	6	31	3	17	1	28	80			166
Inverness				1	1	2				4
Javiana	3			99	1	3				106
Johannesburg	3	2		3		1	35		1	45
Kedougou							1			1
Kentucky	28	117	28	5	8	4	3		1	194
Kiambu		2		1	2	1	2			8
Kisarawe								1		1
Kokomlemle	2									2
Krefeld							12			12
Lexington		1					1			2
Lille		6					1			7
Litchfield	6	5		16	1		2			30
Liverpool		4		2		1	5			12
Livingstone	3		3		2		6			14
Lomalinda				1						1
London		8		5			19		1	33
London var. 15+							2			2
London var. 15+,34+							1			1
Manhattan		2			1		5	2	1	11
Mbandaka	9	38	3	12	3	11	29			105
Meleagridis	39	77		6			3			125
Meleagridis var. 15+	1			1						2
Meleagridis var. 15+, 34+							1			1
Minnesota		4		1		4				9
Mississippi			1			1				2
Montevideo	14	189	4	14	18	2	11	4	22	278
Muenchen	23	20		13	9	4	28	8	1	106

TABLE 7

Laboratory-confirmed *Salmonella* isolates from clinical nonhuman sources reported to the National Veterinary Services Laboratories by serotype and source, 2008

Serotype	All Others	Bovine	Chicken	Equine	Other birds / Wild animals	Other Domestic Animals /Environment	Porcine	Reptile	Turkey	Total
Muenster	16	140		15	4	17	6		9	207
Muenster var. 15+						1				1
Newport	20	218	1	79	51	70	21	4	8	472
Norwich	2	2		5				1		10
Nottingham				1						1
Ohio	5	9			1		32		1	48
Oranienburg		7	1	14	2	4	1	5		34
Orion				1		1				2
Orion var. 15+		1					1			2
Orion var. 15+,34+							3			3
Ouakam		1							1	2
Panama	1	3			2			6		12
Paratyphi B		1		1						2
Paratyphi B var. L(+) tartrate+	1	2	1	15	1			8		28
Poano								1		1
Pomona	1	1						5		7
Poona		2		1	8			4		15
Potsdam						1				1
Putten							5			5
Reading		28		2	18	9	3		1	61
Rissen							3			3
Rubislaw	1	2		10	2	2		1		18
Ruiru				3						3
Saintpaul	2	2		7	24	2	3	2	11	53
Sandiego	1				3			11		15
Schwarzengrund		12		6	3	4	25		2	52
Senftenberg	26	11	1	4	11	3	63		109	228
Soerenga		1						1		2
Taksony	2			2			1			5
Tennessee		5			3		2		2	12
Thompson	14	8		23		7	2			54
Treforest								2		2
Typhimurium	16	189	9	193	78	37	208	3	5	738
Typhimurium var. 5-	32	130	4	58	37	21	550		3	835
Uganda	3	36		14		8	11		3	75
Uganda var. 15+	1	9					6			16
Virchow				3						3

TABLE 7

Laboratory-confirmed *Salmonella* isolates from clinical nonhuman sources reported to the National Veterinary Services Laboratories by serotype and source, 2008

Serotype	All Others	Bovine	Chicken	Equine	Other birds / Wild animals	Other Domestic Animals /Environment	Porcine	Reptile	Turkey	Total
Wandsworth								1		1
Wolvevreden					1					1
Worthington	1	2		2		3	53		14	75
I 11:r:-		1								1
I 13,23:-:1,5				1						1
I 28:y:-								1		1
I 3,10:-:1,5		3					3			6
I 3,10:-:l,w		3		1		1				5
I 3,10:e,h:-		1			1	1	2			5
I 3,10:l,z13:-		1								1
I 3,15:-:1,5							1			1
I 3,15:-:l,w		1								1
I 3,15:e,h:-				1						1
I 3,19:-:z27		1							1	2
I 4,12:l,v:-							1			1
I 4,[5],12:-:1,2				1	9	1		3		14
I 4,[5],12:-:1,7									1	1
I 4,[5],12:d:-									1	1
I 4,[5],12:i:-	20	23	6	35	19	3	28			134
I 4,[5],12:r:-							2			2
I 6,7:-:1,5		6		5			3	2		16
I 6,7:-:1,6				1	1					2
I 6,7:-:e,n,z15				1						1
I 6,7:k:-	2		1	3						6
I 6,7:l,w:-							1			1
I 6,7:r:-							1			1
I 6,8:-:1,5				1						1
I 6,8:-:e,n,x				1						1
I 6,8:d:-							1			1
I 6,8:e,h:-		2								2
I 8,20:-:z6									1	1
I 9,12:l,z28:-				4						4
II 11:c:e,n,z15								1		1
II 30:l,z28:z6	1									1
II 40:c:e,n,x,z15								1		1
II 58:c:z6								1		1
II 58:d:z6					1					1

TABLE 7

Laboratory-confirmed *Salmonella* isolates from clinical nonhuman sources reported to the National Veterinary Services Laboratories by serotype and source, 2008

Serotype	All Others	Bovine	Chicken	Equine	Other birds / Wild animals	Other Domestic Animals /Environment	Porcine	Reptile	Turkey	Total
II 9,12,46:z:-								1		1
II 9,12:z39:1,7								1		1
IIIa 18:z4,z23:-								1	4	5
IIIa 18:z4,z32:-								1		1
IIIa 21:g,z51:-								1		1
IIIa 40:z36:-								1		1
IIIa 41:z4,z23:-	1				2	1		1		5
IIIa 42:z4,z24:-							1			1
IIIa 44:z4,z23,z32:-					1					1
IIIa 44:z4,z24:-						1				1
IIIa 44:z4,z32:-				1						1
IIIa 48:g,z51:-			1							1
IIIa 51:z4,z23:-						1		1		2
IIIa 53:z4,z23:-					1					1
IIIa 56:z4,z23:-				1						1
IIIb (6),14:z10:z	1									1
IIIb 11:i:z					1					1
IIIb 21:z10:e,n,x,z15		1								1
IIIb 35:r:e,n,x,z15					1					1
IIIb 38:(k):-								1		1
IIIb 38:l,v:z35								1		1
IIIb 38:z10:z53					1					1
IIIb 42:-:z35					2					2
IIIb 43:z52:z53								2		2
IIIb 47:r:z35					1					1
IIIb 48:i:z					5			3		8
IIIb 48:l,v:1,5,(7)								4		4
IIIb 48:r:e,n,x,z15								1		1
IIIb 48:r:z								1		1
IIIb 48:z52,z53:-								1		1
IIIb 48:z52:z								2		2
IIIb 50:-:z35					1					1
IIIb 50:i:e,n,x,z15								2		2
IIIb 50:k:z								12		12
IIIb 50:k:z35								1		1
IIIb 50:k:z53								3		3
IIIb 50:r:z				1						1

TABLE 7

Laboratory-confirmed *Salmonella* isolates from clinical nonhuman sources reported to the National Veterinary Services Laboratories by serotype and source, 2008

Serotype	All Others	Bovine	Chicken	Equine	Other birds / Wild animals	Other Domestic Animals /Environment	Porcine	Reptile	Turkey	Total
IIIb 50:z52:z35								1		1
IIIb 53:z10:z35								1		1
IIIb 58:l,v:z35					1					1
IIIb 58:z52:z53								1		1
IIIb 59:k:z35								1		1
IIIb 6,14,18:l,v:z								1		1
IIIb 6,14,18:z4,z23:-								1		1
IIIb 60:-:e,n,z15								1		1
IIIb 60:i:e,n,x,z15								1		1
IIIb 60:r:e,n,x,z15								3		3
IIIb 60:r:z					1					1
IIIb 61:-:1,5,[7]		1				26	2			29
IIIb 61:c:1,5								1		1
IIIb 61:c:1,5,(7)								1		1
IIIb 61:i:z								1		1
IIIb 65:-:z53								1		1
IIIb 65:k:z53				1		1				2
IIIb 65:l,v:z53								1		1
IV 11:z4,z23:-								1		1
IV 18:z36,z38:-	1									1
IV 38:z4,z23:-								1		1
IV 40:z4,z23:-					1					1
IV 40:z4,z32:-		1				1				2
IV 43:Z4,Z23:-								2		2
IV 43:z4,z23:-					1					1
IV 43:z4,z32:-								2		2
IV 48:g,z51:-								1		1
IV 50:g,z51:-								1		1
IV 50:z4,z23:-					1					1
Rough, mucoid, and/or nonmotile isolates		14	3	5	5	3	69	10	2	111
Total	423	2423	123	932	450	354	2273	166	329	7473
<p>Note: ----- Data from United States Department of Agriculture (USDA), Animal and Plant Health Inspection Service (APHIS), and National Veterinary Services Laboratory (NVSL).</p>										

TABLE 8

Laboratory-confirmed *Salmonella* isolates from non-clinical nonhuman sources reported to the National Veterinary Services Laboratories by serotype and source, 2008

Serotype	All Others	Bovine	Chicken	Equine	Other birds / Wild animals	Porcine	Reptile	Turkey	Total
Abaetetuba								15	15
Adelaide	1					1			2
Agona	18	21	54			6		71	170
Alachua	1		15						16
Albany	3		3					22	28
Albert			1					1	2
Altona			3						3
Amager		1	1						2
Amsterdam var. 15+	3								3
Anatum	24	32	30	1	1	7		40	135
Anatum var. 15+	2	7	2		1	1		2	15
Anatum var. 15+,34+		1	1			1			3
Banana			3						3
Bareilly	3	2	28						33
Barranquilla			3					1	4
Bergen					1				1
Berta	6		20			1		9	36
Blockley	1		3				1		5
Bovismorbificans	1		1						2
Braenderup	10	5	65			1			81
Brandenburg	5	2	2			2		3	14
Bredeney	2	1	3			1		3	10
Cannstatt			2						2
Cerro	9	39	45			1		3	97
Choleraesuis var. Kunzendorf	1					1			2
Cubana	4	1	18					10	33
Derby	4	2	1			29		10	46
Dublin	10	71	4						85
Ealing	1		3						4
Eastbourne	1								1
Enteritidis	50	6	841		41			12	950
Gaminara	6		3						9
Gera								2	2
Give	13	7	3						23
Give var. 15+	4								4
Give var. 15+,34+	1		3						4
Glostrup			1						1
Hadar	9	1	40		4	3		130	187

TABLE 8

Laboratory-confirmed *Salmonella* isolates from non-clinical nonhuman sources reported to the National Veterinary Services Laboratories by serotype and source, 2008

Serotype	All Others	Bovine	Chicken	Equine	Other birds / Wild animals	Porcine	Reptile	Turkey	Total
Hartford	12		4						16
Havana	2		30					1	33
Heidelberg	194	5	992		32	8		44	1275
Idikan			1						1
Indiana	2								2
Infantis	11	7	60	3		16		9	106
Inverness	2		2					1	5
Istanbul			1						1
Javiana	26	2	14						42
Johannesburg	4	1	27		4	5		11	52
Kentucky	111	161	1412		49	2		42	1777
Kiambu		1	30						31
Kottbus		1							1
Kralingen			2						2
Lawndale		1							1
Lexington	1		4						5
Lexington var. 15+	1								1
Lexington var. 15+,34+			3						3
Lille	2	3	20					2	27
Litchfield	2		4		3	1			10
Liverpool	3	1	3						7
Livingstone	7	1	19		1				28
London	20	1				6		84	111
Luciana			3						3
Manhattan	1	1	1						3
Mbandaka	37	22	96		1	3		11	170
Meleagridis	3	18	8						29
Meleagridis var. 15+		1	1						2
Memphis			3						3
Minnesota	4	3	7					8	22
Mississippi	2								2
Molade	1		3						4
Montevideo	40	138	173		7	1		15	374
Muenchen	39	3	45			2		12	101
Muenster	11	22	9			2		75	119
Muenster var. 15+	3								3
Muenster var. 15+,34+	2								2
Newport	36	36	39	1	9	2		41	164

TABLE 8

Laboratory-confirmed *Salmonella* isolates from non-clinical nonhuman sources reported to the National Veterinary Services Laboratories by serotype and source, 2008

Serotype	All Others	Bovine	Chicken	Equine	Other birds / Wild animals	Porcine	Reptile	Turkey	Total
Norwich			3						3
Ohio	4		19			4		5	32
Oranienburg	10	10	22	1	1				44
Orion	1	1	7					3	12
Orion var. 15+	1		3		1				5
Orion var. 15+,34+	10		12						22
Oslo	1								1
Ouakam	2	1	8					2	13
Panama	1	3	1						5
Paratyphi A	1								1
Paratyphi B	1								1
Paratyphi B var. L(+) tartrate+	3		1						4
Pomona	1	1	5						7
Poona			1						1
Putten	1		15					2	18
Reading	4	3	2					9	18
Redlands		1							1
Rissen	2		1						3
Rubislaw	32	2	11		1				46
Ruiru			2						2
Saintpaul	9		19		3	6		76	113
Saugus		1							1
Schwarzengrund	8	2	144	1		1		26	182
Senftenberg	15	6	165		18	2		272	478
Soerenga			3						3
Taksony			10					1	11
Tennessee	8		57					4	69
Thompson	9	1	102	1	3			10	126
Typhimurium	69	36	243	1	35	9	1	15	409
Typhimurium var. 5-	17	9	228		6	22		15	297
Uganda	7	7	14	1		2		2	33
Uganda var. 15+	1	4	1						6
Westhampton			1					2	3
Widemarsh			1					3	4
Worthington	3		60			1		32	96
I 21:y:-			1						1
I 3,10:-:1,5			2						2
I 3,10:-:l,w		3						2	5

TABLE 8

Laboratory-confirmed *Salmonella* isolates from non-clinical nonhuman sources reported to the National Veterinary Services Laboratories by serotype and source, 2008

Serotype	All Others	Bovine	Chicken	Equine	Other birds / Wild animals	Porcine	Reptile	Turkey	Total
I 3,10:-:z6	1								1
I 3,10:e,h:-	1	1						3	5
I 3,15,34:z10:-			1						1
I 3,15:z10:-								4	4
I 3,19:-:z27	3		3						6
I 4,12:l,v:-	1							2	3
I 4,12:z:-			1						1
I 4,[5],12:-:1,2	1		3		1				5
I 4,[5],12:-:1,7		1						1	2
I 4,[5],12:d:-	1							2	3
I 4,[5],12:e,h:-	1								1
I 4,[5],12:i:-	9	3	161		3	1		2	179
I 4,[5],12:r:-			5					12	17
I 42:z4,z23:-			1						1
I 47:z4,z23:-			1						1
I 6,14,18:k:1,5			1						1
I 6,7:-:1,5	5	1	52	2				1	61
I 6,7:-:e,n,z15		1							1
I 6,7:b:-			1						1
I 6,7:d:-	1		2						3
I 6,7:k:-		3	10					2	15
I 6,7:l,w:-	1	1	1						3
I 6,7:r:-		1							1
I 6,7:z10:-	1								1
I 6,7:z29:-			1						1
I 6,8:-:1,2			1					1	2
I 6,8:d:-	1		3						4
I 6,8:z10:-			1					1	2
I 8,20:-:z6	1	1	32						34
I 8,20:i:-			7		1			1	9
IIIa 18:z4,z23:-	3							13	16
IIIa 18:z4,z32:-	1							1	2
IIIa 40:z4,z23:-								1	1
IIIa 41:z4,z23:-	3								3
IIIa 48:z4,z23:-								2	2
IIIa 53:z4,z23:-								4	4
IIIb (6),14:z10:z							1		1
IIIb 21:z10:e,n,x,z15		2							2

TABLE 8

Laboratory-confirmed *Salmonella* isolates from non-clinical nonhuman sources reported to the National Veterinary Services Laboratories by serotype and source, 2008

Serotype	All Others	Bovine	Chicken	Equine	Other birds / Wild animals	Porcine	Reptile	Turkey	Total
IIIb 35:k:z35		1							1
IIIb 48:i:z							1		1
IIIb 57:c:z	1								1
IIIb 61:-:1,5,[7]	1								1
IIIb 61:l,v:1,5,7							1		1
IIIb 61:r:z							1		1
Rough, mucoid, and/or nonmotile isolates	9	2	53		2			3	69
Total	1039	737	5723	12	229	151	6	1227	9124

Note:

Data from United States Department of Agriculture (USDA), Animal and Plant Health Inspection Service (APHIS), and National Veterinary Services Laboratory (NVSL).