

TABLE 1

Laboratory-confirmed *Salmonella* isolates from human sources reported to CDC, with the 20 most frequently reported serotypes listed individually, 2007

Rank	Serotype	Number Reported	Percent
1	Typhimurium *	6279	15.7
2	Enteritidis	6152	15.4
3	Newport	3620	9.1
4	Heidelberg	1610	4.0
5	Javiana	1331	3.3
6	I 4,[5],12:i:-	1243	3.1
7	Montevideo	1003	2.5
8	Muenchen	995	2.5
9	Oranienburg	692	1.7
10	Tennessee	616	1.5
11	Braenderup	589	1.5
12	Infantis	540	1.4
13	Saintpaul	520	1.3
14	Agona	512	1.3
15	Mississippi	472	1.2
16	Typhi	450	1.1
17	Thompson	414	1.0
18	Paratyphi B var. L(+) tartrate+	412	1.0
19	Schwarzengrund	307	0.8
20	Hadar	285	0.7
	<b>Sub Total</b>	<b>28042</b>	<b>70.2</b>
	All other serotyped	6796	17.0
	Unknown	3845	9.6
	Partially serotyped	1187	3.0
	Rough, mucoid, and/or nonmotile isolates	100	0.3
	<b>Sub Total</b>	<b>11928</b>	<b>29.8</b>
	<b>Total</b>	<b>39970</b>	<b>100</b>
Notes: ----- Typhimurium includes var. 5- (formerly var. Copenhagen) All serotyped isolates listed in Table 3			

TABLE 1a

Laboratory-confirmed *Salmonella* isolates from human sources reported to CDC: Percent change among the 20 most frequently reported serotypes, 1997-2007

Rank			Serotype	Number Reported			Percent Change		
1997	2002	2007		1997	2002	2007	1997-2002	2002-2007	1997-2007
1	1	1	Typhimurium *	9118	7140	6279	-22	-12	-31
2	2	2	Enteritidis	7924	5145	6152	-35	20	-22
4	3	3	Newport	1584	4251	3620	168	-15	129
3	4	4	Heidelberg	2104	1985	1610	-6	-19	-23
8	5	5	Javiana	675	1201	1331	78	11	97
19	18	6	I 4,[5],12:i:-	189	296	1243	57	320	558
6	6	7	Montevideo	718	729	1003	2	38	40
13	8	8	Muenchen	543	603	995	11	65	83
11	7	9	Oranienburg	623	607	692	-3	14	11
69	61	10	Tennessee	31	36	616	16	1611	1887
12	13	11	Braenderup	559	389	589	-30	51	5
9	10	12	Infantis	651	472	540	-27	14	-17
14	9	13	Saintpaul	436	548	520	26	-5	19
5	14	14	Agona	740	340	512	-54	51	-31
18	16	15	Mississippi	205	315	472	54	50	130
15	19	16	Typhi	349	293	450	-16	54	29
7	12	17	Thompson	696	442	414	-36	-6	-41
21	11	18	Paratyphi B var. L(+) tartrate+	184	442	412	140	-7	124
29	36	19	Schwarzengrund	144	99	307	-31	210	113
10	15	20	Hadar	643	333	285	-48	-14	-56

Note:

\* Typhimurium includes var. 5- (Formerly var. Copenhagen)

Laboratory-confirmed *Salmonella* isolates from human sources reported to CDC by age group and sex, 2007

Age Group	Sex			Total
	Female	Male	Unknown	
< 1 Year	1636	1829	307	3772
1 to 4	2842	2940	421	6203
5 to 9	1330	1497	197	3024
10 to 19	1557	1848	188	3593
20 to 29	2012	1574	198	3784
30 to 39	1613	1401	179	3193
40 to 49	1830	1394	169	3393
50 to 59	1795	1373	138	3306
60 to 69	1282	957	115	2354
70 to 79	1094	726	89	1909
80+	887	419	58	1364
Unknown Age	663	621	2791	4075
	<b>18541</b>	<b>16579</b>	<b>4850</b>	<b>39970</b>

FIGURE 1

Laboratory-confirmed *Salmonella* Isolates from human sources reported to CDC by age group and sex, 2007

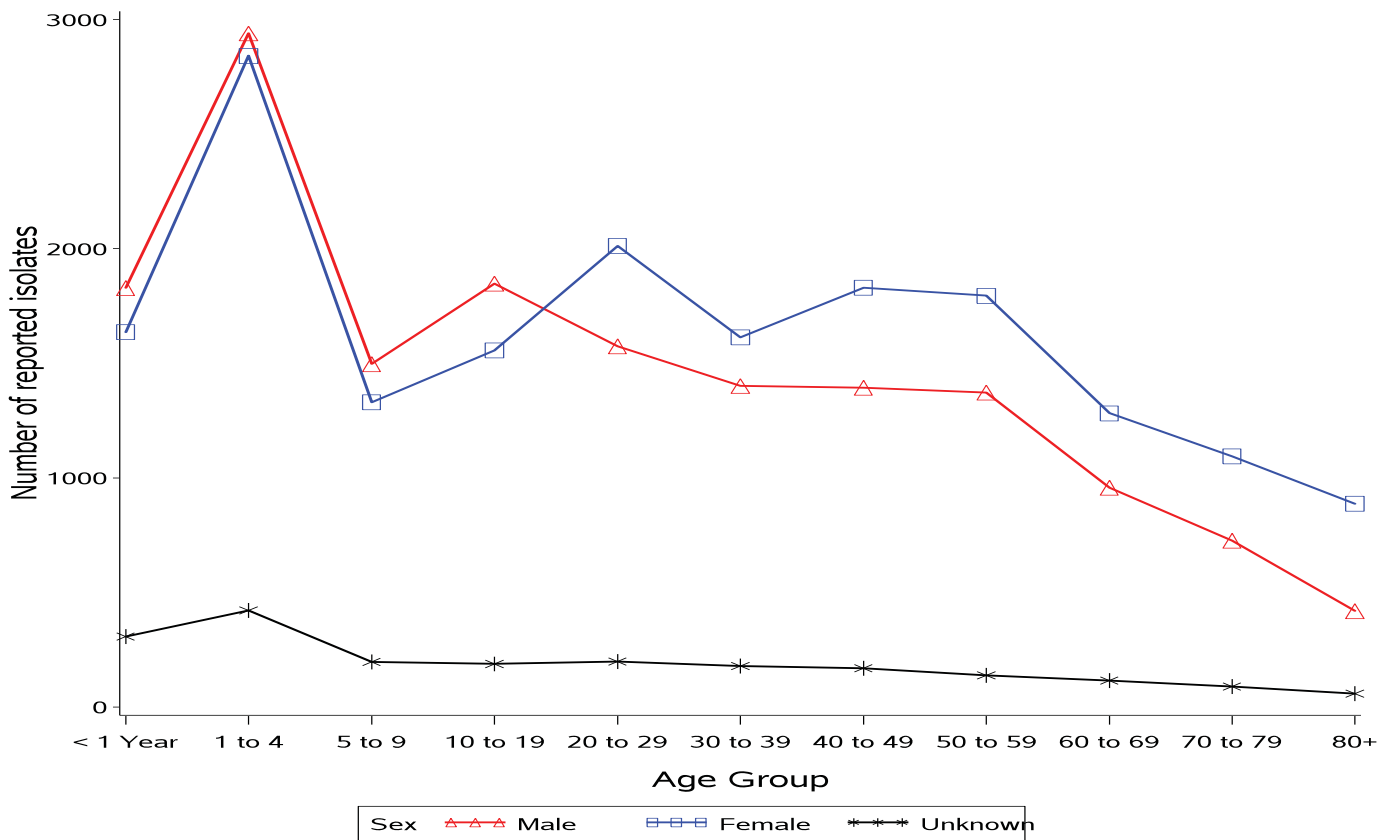


TABLE 3

Laboratory-confirmed *Salmonella* isolates from human sources reported to CDC by serotype and year, 1997-2007

Serotype	1997	1998	1999	2000	2001	2002	2003	2004	2005	2006	2007	Total
Aarhus	16	9	6	7	2	7	9	3	5	6	6	76
Aba				4			1			1		6
Abadina						2						2
Abaetetuba	8	7	7	5	4	3	1	1		3	3	42
Aberdeen	3	4	4	13	5	3	3	6	6	10	13	70
Abony	3	6	4	1	11	9	9	10	2	8	3	66
Abortusequi	1											1
Adelaide	70	73	95	42	81	66	60	76	71	70	59	763
Adime							1					1
Aequatoria	1		1					5	2			9
Aflao			1									1
Africana		2	6					1				9
Afula								1				1
Agama	2	2	2	1	1	5	4	2	8	4	2	33
Agbeni	3		1	13	5	4	7	72	15	15	16	151
Ago	1	1		1						1	4	8
Agodi						1						1
Agona	740	991	528	406	372	340	523	407	369	538	512	5726
Agoueve	3	6	2	2	3	6	2	2	3	3	2	34
Ahoutoue											1	1
Ahuza				2								2
Ajiobo	2	2		2		2	1	1		1		11
Alabama	2	2	4	1	1	3		3	3	5		24
Alachua	18	14	22	20	9	16	10	28	21	18	19	195
Alagbon								1	3			4
Alamo		1										1
Albany	21	23	17	18	17	15	17	34	38	36	36	272
Albert									1			1
Albuquerque						1						1
Allandale		1		1	1			1				4
Allerton								1				1
Altona	1		1	4	3	3		2	1	4	6	25
Amager	8	3	4	7	1	2	3	15	5	4	4	56
Amager var. 15+								3				3
Amherstiana										1		1
Amoutive										1	2	3
Amsterdam	9	5	6	2	5	7	6	3	2	3	2	50
Amsterdam var. 15+	7	4	5	1	5	3		1	2	1		29
Anatum	208	138	157	177	188	217	177	250	197	238	203	2150

TABLE 3

Laboratory-confirmed *Salmonella* isolates from human sources reported to CDC by serotype and year, 1997-2007

Serotype	1997	1998	1999	2000	2001	2002	2003	2004	2005	2006	2007	Total
Anatum var. 15+	20	25	23	8	4	4	10	11	6	16	7	134
Anatum var. 15+, 34+						1						1
Anecho	2	2	2	1		5	2		2	3	9	28
Anfo									1	1	2	4
Annedal					1							1
Antsalova		2		3		1		1				7
Apapa	2		2	4	8	10	3	12	7	7	13	68
Apeyeme			1	1				1	2			5
Aqua	1			2	1		1	2	2	3	1	13
Aragua	1	1		1								3
Arapahoe						1						1
Arechavaleta	9	4	3	9	3	6	3	14	4	2	13	70
Assen			1	1		1			1			4
Assinie										4		4
Athinai		1										1
Ati								2				2
Augustenborg	2				1				1			4
Austin					1							1
Australia					3							3
Avignon										1		1
Avonmouth						1						1
Azteca			1						1			2
Babelsberg				1				2				3
Baguirmi					1							1
Bahrenfeld	1									1		2
Baildon	5	73	77	4	2	14	12	7	33	14	17	258
Ball					1						1	2
Banalia					1							1
Banana	1	1		1	1		3		2	1		10
Banco		2										2
Bandia								1				1
Bardo	10	10	13	20	16	49	42	32	27	29	33	281
Bareilly	112	153	171	182	206	183	240	232	201	256	249	2185
Bargny										1		1
Barranquilla			1		3	1	3	3	1	5	6	23
Bassa							1					1
Bassadji					1			1				2
Beaudesert				1			1			3	2	7
Belem			1				1					2

TABLE 3

Laboratory-confirmed *Salmonella* isolates from human sources reported to CDC by serotype and year, 1997-2007

Serotype	1997	1998	1999	2000	2001	2002	2003	2004	2005	2006	2007	Total
Benfica		1	1		1							3
Benin									1	6		7
Bere	8	1			1		1		2	7	7	27
Bergen			1	2			1			1		5
Berkeley		1										1
Berta	87	123	143	312	334	300	201	409	209	252	191	2561
Bijlmer									2			2
Binningen								1				1
Birkenhead	7	4		2	2		4	5	2		1	27
Bispebjerg	1						1					2
Blegdam	4	3	1	2	2	3	2	8	4			29
Blijdorp							1					1
Blockley	62	61	54	28	33	38	67	83	50	61	66	603
Blukwa	1											1
Bobo									1			1
Bochum		5	1		3		1					10
Bolton				1								1
Bonames				1			1					2
Bonariensis	3	6	4	3	6	6	4	3	1	2	4	42
Bonn		1		1	2			2		1		7
Borbeck				1								1
Bournemouth						1	2	1	2	1	2	9
Bouso		1							3	1		5
Bovismorbificans	47	64	35	55	83	74	69	110	73	71	47	728
Bracknell						1						1
Bradford	3	1		2	1	2	3	1		1	1	15
Braenderup	559	497	529	531	396	389	553	684	603	561	589	5891
Brancaster		1					1					2
Brandenburg	168	132	117	84	106	140	116	80	134	94	73	1244
Brazil	1		2				2	2	2	3	3	15
Brazos	1		1									2
Brazzaville							1		2	3	1	7
Bredeney	51	112	44	25	79	41	56	27	26	27	23	511
Breukelen											1	1
Brezany					4	2	1		1			8
Bristol	1											1
Bron					1			3		1		5
Bronx	2	2			1						1	6
Brooklyn		1					1					2

TABLE 3

Laboratory-confirmed *Salmonella* isolates from human sources reported to CDC by serotype and year, 1997-2007

Serotype	1997	1998	1999	2000	2001	2002	2003	2004	2005	2006	2007	Total
Broughton			1									1
Brunei								3	2			5
Bsilla					1	1		3	1			6
Budapest											1	1
Bukavu	1			1			1				2	5
Bukuru								1				1
Burgas											1	1
Butantan			1			1			1			3
Butantan var. 15+				1								1
Buzu	5	4	1				1			2	2	15
Calabar		1	1									2
California	9	3	1		1		5	1		2		22
Camberwell		1										1
Canada				1		1	1	1	1			5
Cannstatt	1	1		1	1	3	1			1		9
Caracas	3		1			1				1		6
Carmel			1	1	8	9		9	4	1	4	37
Carno			1									1
Carrau	6	3	12	6	5	3	7	8	9	10	1	70
Cerro	60	52	56	52	31	39	28	19	22	33	26	418
Cerro var. 14+							3	3	4	2	5	17
Ceyco					1	1						2
Chailey	12	9	3	3		1	1	3	2			34
Chandans						3		1	5	1	1	11
Charity				1								1
Chester	36	24	29	23	24	23	51	15	15	29	31	300
Chicago		1				1	1			1	2	6
Chichiri					1		1					2
Chincol		1	2	2			1		2	1		9
Chingola	1				1						1	3
Chittagong									7			7
Choleraesuis	25	23	25	10	8	11	13	17	7	12	15	166
Choleraesuis var. Decatur		2			1	3		1				7
Choleraesuis var. Kunzendorf	24	13	9	10	5	8	6	9	6	11	10	111
Clackamas	3		3	1		6	4	1	1	1	2	22
Claibornei		1	1		1			1		1		5
Clerkenwell					1							1
Cleveland								1				1
Cochise				1								1

TABLE 3

Laboratory-confirmed *Salmonella* isolates from human sources reported to CDC by serotype and year, 1997-2007

Serotype	1997	1998	1999	2000	2001	2002	2003	2004	2005	2006	2007	Total
Coeln	4	5	2	3	3	3	2	3	2	4	4	35
Colindale	1	4	2	3	2	5	8	3	4	13	5	50
Colorado	1	2	2				1					6
Concord	2	2	3		2	1	3	4	6	17	20	60
Corvallis	1	1	1	1		1	3	4	13	23	22	70
Cotham			2	1		3	6	5	9	12	15	53
Cremieu	1			2	1				1			5
Croft										1		1
Cubana	36	72	42	31	26	21	24	18	13	17	25	325
Cuckmere								1		1		2
Cullingworth				1					6			7
Curacao			1	2	1				1			5
Daarle								1	1			2
Dahlem										1		1
Dahomey							1					1
Dahra			2	1	1	1	1		2	2	1	11
Dakar											1	1
Damman								1				1
Daytona	6	3	4	3	4	4	10	10	5	5	1	55
Denver	3	1	1	1	1	2	5	1	5	1	3	24
Derby	152	171	174	188	121	169	125	137	123	139	148	1647
Derkle				1								1
Dessau	1				1							2
Diguel	2	1				2	1		1			7
Diourbel				1					1			2
Djakarta										1		1
Djelfa			1									1
Djugu	2	1	1	1				2	1	2	2	12
Doncaster							1					1
Doorn										1		1
Doulassame	1	1							1			3
Dublin	61	78	66	94	76	83	65	73	55	88	109	848
Duesseldorf	6	15	5	1	2		8	9	1		3	50
Dugbe				1								1
Duisburg			1	1	2	2	2			1	2	11
Dunkwa					1							1
Durban	8	10	3	4	5	1	3	16	6	11	12	79
Durham	2		1	3	3	4	4	3	8	4	1	33
Duval	1	1				1		1		1		5



TABLE 3

Laboratory-confirmed *Salmonella* isolates from human sources reported to CDC by serotype and year, 1997-2007

Serotype	1997	1998	1999	2000	2001	2002	2003	2004	2005	2006	2007	Total
Ealing	8	6	6	9	16	10	12	13	27	12	28	147
Eastbourne	3	8	7	10	6	18	18	8	30	16	16	140
Ebrie			1	3	2	1	1					8
Echa							1		1			2
Edinburg		1	6	2	1	5	20	27	20	17	8	107
Edmonton									1			1
Ekpoui				1		1						2
Elisabethville								1			2	3
Elokate							1					1
Elomrane			3	1	1	1	1	3			1	11
Emek	7	7	8	5	2	2	11	6	7	3	7	65
Entebbe	4		1				1	1		3	6	16
Enteritidis	7924	6030	5343	6487	5634	5145	4914	5028	6732	6740	6152	66129
Enugu	1											1
Epicrates						1						1
Eppendorf			2	2				1		2	1	8
Escanaba	3					1					1	5
Eschweiler									1			1
Essen	3	2	3	4	1		1	2	1	1	5	23
Etterbeek	1											1
Falkensee	1						1		4		1	7
Fallowfield	3											3
Fann						1			1			2
Farmsen	6	4	3		1	1	1	1	1			18
Farsta						4		1		1		6
Fayed			6	3	4		1		1	1		16
Ferruch							1					1
Fillmore						1						1
Finkenwerder			1									1
Fischerkietz		1	1							1		3
Fischerstrasse				1		1					4	6
Fitzroy								1				1
Florida	11	8	1	2	4	2	3	1	6	3	7	48
Fluntern		3			2	2	5	8	3	3	5	31
Fomeco									1			1
Freetown					1		6	2	11			20
Freiburg							1					1
Fresno					3	1					1	5
Friedenau	1					1	1			1		4

TABLE 3

Laboratory-confirmed *Salmonella* isolates from human sources reported to CDC by serotype and year, 1997-2007

Serotype	1997	1998	1999	2000	2001	2002	2003	2004	2005	2006	2007	Total
Friedrichsfelde								2	1	1	1	5
Frintrop										1		1
Fulica	1								1			2
Fyris		1							1	2		4
Gabon		1	1			1						3
Galiema							1	1				2
Galil	1				2							3
Gallinarum	1	1	1		1	3	2		2		1	12
Gamaba		1										1
Gambia	2								1			3
Gaminara	47	61	52	51	58	44	86	134	99	77	79	788
Garba					1							1
Garoli										1		1
Gatow		2		1	1	1			2		2	9
Gatuni		1	1	1	3		2	3	1	2	2	16
Georgia		2			4	3	2	2	1	6	5	25
Gera							1					1
Give	118	92	98	86	75	55	93	102	103	123	106	1051
Give var. 15+	26	36	23	9	9	5	7	5		1	6	127
Give var. 15+, 34+	1					1						2
Glasgow					1						2	3
Glostrup	5	10	7	6	6	2	2	2	10	5	5	60
Gloucester	2											2
Gnesta								1			2	3
Goeteborg	1											1
Goettingen	1	1	1	3		2	1	2			3	14
Goldcoast	1	1	1					1	2		1	7
Goma							1					1
Gombe								1				1
Goverdhan											1	1
Grandhaven										1		1
Groenekan					1							1
Grumpensis		1	2	1	1		1		102	9	2	119
Guildford			1								1	2
Guinea								1	3	1	3	8
Gustavia				1	1							2
Gwale										1		1
Haardt	5	2	3	4	4	3	52	29	4	5	5	116
Hadar	643	544	516	354	307	333	280	277	205	275	285	4019

TABLE 3

Laboratory-confirmed *Salmonella* isolates from human sources reported to CDC by serotype and year, 1997-2007

Serotype	1997	1998	1999	2000	2001	2002	2003	2004	2005	2006	2007	Total
Hadejia			1									1
Haifa	4	3	6	11	4	6	3	5	5	5	5	57
Halle			1									1
Hannover								1				1
Harburg	1					1	1			1		4
Harcourt										1		1
Harleystreet		1										1
Harrisonburg								1				1
Hartford	110	175	140	150	158	198	188	190	239	199	197	1944
Hatfield	1		1				1					3
Hato			1	2	5	1	1	2		4	2	18
Havana	47	77	46	26	19	28	29	32	26	37	35	402
Hayindogo		1			1	1						3
Heidelberg	2104	1900	1816	1772	1895	1985	1845	1758	1905	1495	1610	20085
Hemingford								1				1
Heron	1											1
Herston					1	1	2	2	2	2	1	11
Hessarek							1					1
Hidalgo	1							1				2
Hiduddify		3	1	1		1	2			1		9
Hillegersberg						1	1			1		3
Hillingdon									1			1
Hindmarsh	1	3		3	4	2	5	12	5	5		40
Hofit									1	2		3
Hoghton								1		1		2
Holcomb	2		1		3	4	1		2	3	4	20
Holocomb											1	1
Homosassa		2										2
Horsham			3				1			1		5
Hull					1	1	2		3	3	5	15
Hvittingfoss	26	29	38	34	30	44	32	34	36	45	55	403
Ibadan	42	39	27	17	9	10	17	5	9	3	2	180
Idikan	4	1		2		1	1		1		2	12
Ilala	1							1				2
Inchpark			1									1
Indiana	11	7	14	9	13	24	43	18	17	28	11	195
Infantis	651	600	596	613	441	472	570	588	506	491	540	6068
Inganda				1	4		2	1		1	2	11
Inpraw							1					1

TABLE 3

Laboratory-confirmed *Salmonella* isolates from human sources reported to CDC by serotype and year, 1997-2007

Serotype	1997	1998	1999	2000	2001	2002	2003	2004	2005	2006	2007	Total
Inverness	26	32	24	22	24	30	30	49	44	49	58	388
Ipswich			1									1
Irenea			1				1					2
Irumu	13	15	6	6	9	2	9	13	9	9	5	96
Isangi	1	5	2		3	1	4	3	4	1	4	28
Israel							2	1		1	4	8
Istanbul	8	7	25	15	27	33	15	61	9	8	4	212
Isuge						1						1
Itami	2	8	7	12	50	3	8	7	10	1	1	109
Ituri	1	5	3	2	7	1		1	1	1	1	23
Jaffna											1	1
Jamaica	2	1	2									5
Jangwani	4	5	6	7	2	3		4	4		8	43
Javiana	675	1168	1197	1204	1068	1201	1718	1776	1324	1433	1331	14095
Jedburgh	1								1			2
Jericho									1			1
Jerusalem					1	1	1			1		4
Joal						2	2	4			1	9
Jodhpur		1				1		1				3
Johannesburg	45	32	44	31	35	20	17	40	44	22	38	368
Jos			1						2			3
Jubilee	1							1		1		3
Jukestown										1		1
Kaapstad				1	1		2	1				5
Kaduna									1			1
Kalamu					1					1		2
Kalina					1				1			2
Kallo										1		1
Kambole		1					1					2
Kande					1	3						4
Kandla						1						1
Kanifing	1											1
Kapemba								1		1		2
Kedougou		1	2	3	1	1		3	4	4	1	20
Kentucky	60	58	71	48	64	69	59	56	81	123	96	785
Kiambu	14	13	40	24	27	41	84	31	53	65	34	426
Kimberley									1			1
Kimuenza						1			1	1	1	4
Kingabwa	2		2		3	11	4	7	11	4	8	52

TABLE 3

Laboratory-confirmed *Salmonella* isolates from human sources reported to CDC by serotype and year, 1997-2007

Serotype	1997	1998	1999	2000	2001	2002	2003	2004	2005	2006	2007	Total
Kingston	3	1			2	1		1	1		2	11
Kinondoni	1	1	1			1						4
Kintambo	14	20	8	3	5	9	10	16	5	15	8	113
Kirkee	1		1							2		4
Kisangani									2	1		3
Kisarawe	2	2			1	2		1	1		3	12
Kisii											1	1
Kivu			2							1		3
Kokoli		1										1
Kokomlemle	3	1	1	2	4	2	1	2	1	2	3	22
Konstanz					2		1				1	4
Korbol									1	1		2
Korlebu										1		1
Kortrijk										1		1
Kottbus	11	2	5	15	73	19	7	8	8	15	13	176
Kotu								1	4			5
Kralingen			1	1								2
Krefeld	1		1	1		2	1		1			7
Kristianstad				1	1							2
Kua	1	1	2	1	2		3	2			1	13
Kunduchi		1										1
Labadi		1										1
Lagos	1				1	1	1	2		1	4	11
Lamberhurst		1		1								2
Lamin		1										1
Landau	1				1							2
Landwasser		1	2		1							4
Langensalza		1										1
Lansing			1					2			1	4
Larochelle	1	6	4	2		8	4	6	2	2	3	38
Lattenkamp					1				1		1	3
Leeuwarden					2		1					3
Leopoldville					1							1
Lexington	1			1	5	1		5	1	1	4	19
Lexington var. 15+			1							1		2
Lika							4					4
Lille	3		1	1		1		1			1	8
Lille var. 14+				1								1
Limete	6	1			1				1	1		10

TABLE 3

Laboratory-confirmed *Salmonella* isolates from human sources reported to CDC by serotype and year, 1997-2007

Serotype	1997	1998	1999	2000	2001	2002	2003	2004	2005	2006	2007	Total
Lindenburg	3	10	5	7	3	2	3	2	4	3	2	44
Lindern						1						1
Litchfield	105	119	135	119	140	125	168	155	141	202	238	1647
Liverpool	3		2	1			1	3	4	2	3	19
Livingstone	6	5	4	6	8	9	2	3	7	9	8	67
Livingstone var. 14+			1								1	2
Llandoff							1					1
Loanda	1			1	1		1	2	2	2	3	13
Lockleaze		1	1			1			1	2	1	7
Lomalinda	12	16	8	9	5	25	12	15	18	20	12	152
Lome	2				2		1					5
Lomita	3	3		2	4	2	6	4			1	25
London	33	28	41	26	24	22	45	28	30	37	176	490
London var. 15+	4	2	1									7
Loubomo					1							1
Louga							1					1
Lovelace		1										1
Lowestoft							1					1
Luciana	3	3	6	8	2	6	4	4	4	3	9	52
Macallen											1	1
Madelia	7	12	12	16	3	4	6	6	6	11	11	94
Madras									1			1
Magwa	1	1										2
Maiduguri	1											1
Malika									1			1
Malstatt				1	1				2			4
Manchester			1	1	1		1					4
Mango			1									1
Manhattan	99	73	78	72	50	89	53	80	58	79	55	786
Mapo							1					1
Mara									1			1
Maracaibo						2						2
Marburg							1					1
Marshall					1							1
Maryland	1	1										2
Massenya							1					1
Matadi	9	4	2	9	3	5	4	2	2		2	42
Matopeni		2			1					3	1	7
Maumee				1				1			1	3

TABLE 3

Laboratory-confirmed *Salmonella* isolates from human sources reported to CDC by serotype and year, 1997-2007

Serotype	1997	1998	1999	2000	2001	2002	2003	2004	2005	2006	2007	Total
Mbandaka	189	147	231	157	163	171	173	164	190	240	231	2056
Mbandaka var 14+										1		1
Meekatharra					1							1
Meleagridis	43	39	14	13	19	6	14	8	12	20	26	214
Meleagridis var. 15+			1								1	2
Memphis	1		1					2		1		5
Menden			1							1		2
Mendoza	1	3	1		2		1	8	2			18
Menston	1				2		2			1	1	7
Mgulani			2				1			2	1	6
Miami	76	99	95	81	68	130	66	103	82	64	97	961
Michigan		2	2	1	1		2	6	1	4	7	26
Mikawasima	2		4	6	3	5	4	1	1	6	2	34
Milwaukee					4							4
Mim								1				1
Minnesota	26	17	23	21	18	35	25	35	55	57	34	346
Mississippi	205	314	248	286	336	315	451	558	566	604	472	4355
Mkamba								1				1
Molade	1	1		4			2		2	3	2	15
Mono		1			2		2		41	31	30	107
Mons						1						1
Monschau	10	3	5	5	7	5	13	21	14	10	11	104
Montevideo	718	829	851	841	630	729	890	874	809	1061	1003	9235
Montreal									1			1
Mornington										1		1
Morocco						1						1
Morotai	1							1				2
Moscow		4			1					1		6
Moualine					1							1
Moundou			1									1
Mountpleasant	1	1			1		1		1		1	6
Mpouto	1											1
Muenchen	543	639	1332	642	586	603	795	739	733	753	995	8360
Muenster	73	68	65	113	64	49	70	59	93	96	70	820
Muenster var. 15+	1	1			1	1	9	2	1		1	17
Muenster var. 15+, 34+	1	2	4	2		1					1	11
Mundonobo				1					1			2
Nagoya	1					1	1		1	1		5
Napoli			2	2		1		1	6	3	1	16

TABLE 3

Laboratory-confirmed *Salmonella* isolates from human sources reported to CDC by serotype and year, 1997-2007

Serotype	1997	1998	1999	2000	2001	2002	2003	2004	2005	2006	2007	Total
Narashino	1								1			2
Nchanga		1		1			2			1		5
Nchanga var. 15+											1	1
Ndolo					1							1
Nessziona	4			1	2			1	1	3	1	13
Neudorf										1	1	2
Neukoelln								1				1
Newholland									2			2
Newmexico	1			4	2	2	10	3	3	2	1	28
Newport	1584	2273	2618	3074	3168	4251	4000	3329	3300	3373	3620	34590
Newrochelle	1	1	1									3
Newyork	4		1								1	6
Ngili						2						2
Ngor			2									2
Nieukerk							1					1
Nigeria				1			1	2			1	5
Nikolaifleet					1							1
Nima	1	5	1	5	6	13	2	5	8	15	8	69
Nitra			1		1		2				1	5
Nola	1				1							2
Norwich	56	67	74	69	96	106	121	106	91	119	118	1023
Nottingham	5	2		4	2	1	11	1	4	2	4	36
Nyanza						1		1			1	3
Nyborg							1				1	2
Oakland			1	1	1	1	3				1	8
Obogu							2					2
Offa						1			1	1	2	5
Ohio	100	79	78	85	64	58	49	74	87	62	46	782
Ohio var. 14+					1				1	6	4	12
Ohlstedt								1				1
Okatie							4			2		6
Oldenburg		1	1			1	1				1	5
Onderstepoort			1	2	1	2	2			1		9
Ontario			1									1
Oranienburg	623	693	616	563	598	607	589	495	590	719	692	6785
Oranienburg var. 14+						2	11	2	5	9	3	32
Orientalis		1	2	5		1	8	2				19
Orion	3	1		3	3		5	3	2	5	6	31
Orion var. 15+		1	1		2	1		1			1	7



TABLE 3

Laboratory-confirmed *Salmonella* isolates from human sources reported to CDC by serotype and year, 1997-2007

Serotype	1997	1998	1999	2000	2001	2002	2003	2004	2005	2006	2007	Total
Orion var. 15+, 34+	2	2	4	2	1			1				12
Oritamerin				1	3	1		3	2	1		11
Os										1		1
Oskarshamn											1	1
Oslo	25	31	28	20	23	19	21	25	30	23	20	265
Othmarschen	6	7	20	27	14	17	17	23	20	11	16	178
Ouakam		1			1		1			4		7
Oudwijk		1			1							2
Overschie	3	3	2	1	1	1	2		3	3	2	21
Oxford								1				1
Oxford var. 15+, 34+										1		1
Oyonnax				1					2			3
Pakistan	4		6	3	5	5	4	5		6	3	41
Panama	144	119	132	158	162	153	184	150	149	199	177	1727
Papuana	1				1							2
Paratyphi A	72	84	77	93	86	107	110	145	121	182	191	1268
Paratyphi B	159	189	172	120	180	124	215	239	105	138	151	1792
Paratyphi B var. L(+) tartrate+	184	248	316	468	467	442	342	354	460	417	412	4110
Paratyphi C	1		1		1			2	1	1	1	8
Patience						1						1
Penarth				1	1					1		3
Pensacola	7	5	8	10	8	8	2	4	14	13	12	91
Pharr			1									1
Planckendael	1											1
Plymouth									4	2	1	7
Poano				2		8	9	6	6	5	2	38
Poitiers									1			1
Pomona	43	20	28	26	38	61	68	70	68	91	65	578
Poona	294	346	249	337	331	283	211	234	196	204	251	2936
Portland								1		2		3
Potsdam	10	6	9	2	6	4	9	4	4	18	17	89
Powell										1		1
Praha			1	1			1		1	1	1	6
Presov										1	1	2
Putten	5	9	3	2	9	4	12	4	9	2	5	64
Quebec		1										1
Quiniela	1	1						2				4
Ramatgan			1									1
Raus		3	3									6

TABLE 3

Laboratory-confirmed *Salmonella* isolates from human sources reported to CDC by serotype and year, 1997-2007

Serotype	1997	1998	1999	2000	2001	2002	2003	2004	2005	2006	2007	Total
Reading	167	81	97	95	53	81	90	74	55	51	58	902
Rehovot					1		1					2
Redlands	1						1			1		3
Remo		1	2		3			1		2	1	10
Rhone											1	1
Richmond	7	4	2	7	6	11	6	6	8	9	12	78
Ridge			1		3	1					1	6
Riggil					1							1
Riogrande			1									1
Rissen	9	6	6	10	4	7	7	7	5	18	11	90
Rissen var. 14+									1			1
Rittersbach						1	1					2
Riverside									1			1
Romanby	4	1	6	5	1	1	1	1	3	1	1	25
Roodepoort	1	2	2	1	1	2	6	3	3	9	1	31
Rostock					2							2
Rottnest			1									1
Rovaniemi										1		1
Rubislaw	81	88	98	76	66	83	103	104	100	96	129	1024
Ruiru			1		1				1			3
Ruzizi			1			1						2
Saarbruecken		1				1				3		5
Saboya		1										1
Saintemarie								1			1	2
Saintpaul	436	479	472	548	471	548	838	695	685	588	520	6280
Salford				1						1		2
Sandiego	59	55	104	142	115	148	126	112	139	221	200	1421
Sangalkam								1				1
Sangera						1						1
Sanjuan			2	3						1	1	7
Sanktgeorg					1					2		3
Santiago			1				2	1				4
Sapele						1						1
Saphra	41	16	13	14	11	4	12	4	5	1	1	122
Sarajane		1										1
Schleissheim	6	8	6	7	4	7	8	3	6	6	1	62
Schoeneberg	1				1							2
Schwarzengrund	144	124	155	113	104	99	181	148	139	174	307	1688
Schwerin									1			1

TABLE 3

Laboratory-confirmed *Salmonella* isolates from human sources reported to CDC by serotype and year, 1997-2007

Serotype	1997	1998	1999	2000	2001	2002	2003	2004	2005	2006	2007	Total
Sculcoates		1										1
Seegefeld				1								1
Sekondi							1					1
Selby								1				1
Sendai		2	1	1		1						5
Senegal				1	2	1	1					5
Senftenberg	180	143	120	148	143	128	99	104	112	113	168	1458
Seremban	1			1	1	1		2	1			7
Serrekunda		1										1
Shamba	1											1
Sherbrooke				1								1
Shiopley								2				2
Shubra	3	4	7	5	3	7	3	2	2	3	2	41
Simi						1				2	1	4
Singapore	3	12	4	6	1	2	2	10	5	7	8	60
Sinstorf	8	1	3	3	7		2	1		1		26
Skansen		1										1
Soahanina	1			1					1			3
Soerenga	1		2	2	3	1	1	3	1	3	7	24
Somone	3	1	1		1	3				1		10
Southampton			1	1								2
Spalantor								2				2
Splott									1			1
Stachus	3		2	1				1	1		1	9
Stanley	164	193	172	239	173	177	227	189	224	315	258	2331
Stanleyville	24	16	11	33	18	18	3	6	7	5	6	147
Stellingen	3	1					1	1				6
Sternschanze											1	1
Stockholm			4	2					1			7
Stockholm var. 15+											1	1
Stoneferry							1	1				2
Stormont							1					1
Stourbridge									1			1
Strasbourg					1			1				2
Suberu	1	1					1		1	1		5
Suelldorf			1				2	1		1	2	7
Sundsvall	47	7	4	4	4	7	11	6	9	3	3	105
Sya				1								1
Szentes						1						1

TABLE 3

Laboratory-confirmed *Salmonella* isolates from human sources reported to CDC by serotype and year, 1997-2007

Serotype	1997	1998	1999	2000	2001	2002	2003	2004	2005	2006	2007	Total
Tabligbo									1		1	2
Tafo			1									1
Takoradi	5	4	4			1	6	5		3	1	29
Taksony	1											1
Tallahassee	18	8	5	3	2	4	8	3	7	11	7	76
Tambacounda	1	1	1	1								4
Tamberma										1		1
Tampico			2			1						3
Tanger					1		2					3
Tanzania										1		1
Teddington						1						1
Teko		1										1
Telaviv		1		1								2
Telelkebir	12	26	16	14	11	11	21	29	45	53	68	306
Teltow							1					1
Tennessee	31	63	29	24	33	36	42	57	132	312	616	1375
Texas									1			1
Thies			1									1
Thompson	696	571	607	609	514	442	509	494	428	447	414	5731
Thompson var. 14+								1				1
Tienba		1										1
Tiko											1	1
Tilene	2		1	2		2	4		1	1		13
Tokoin				4			2		1			7
Toowong	1											1
Tornow					2		2	3		1		8
Toucra				1		2	2	3	2	1		11
Trachau	1						1					2
Travis	1		1		1			2				5
Treforest					2							2
Treguier										1		1
Tripoli								2				2
Troy		1										1
Tsevie					2							2
Tshiongwé				2		2	2	1	4	3		14
Tucson	3		1			1		1	4		4	14
Typhi	349	382	352	399	344	293	362	306	350	413	450	4000
Typhimurium	8291	8101	7126	6495	6061	6312	5905	5872	5977	5917	5315	71372
Typhimurium var. 5-	827	718	926	933	979	828	865	983	1010	955	964	9988

TABLE 3

Laboratory-confirmed *Salmonella* isolates from human sources reported to CDC by serotype and year, 1997-2007

Serotype	1997	1998	1999	2000	2001	2002	2003	2004	2005	2006	2007	Total
Typhisuis	3				1			2				6
Tyresoe								1		1		2
Uccle	1	3		2			1					7
Uganda	51	44	58	55	97	61	59	45	47	59	71	647
Uganda var. 15+	6	1	3	4	1	3	2	1			2	23
Ughelli				1					2			3
Ullevi	1											1
Umbilo										1		1
Umhlali				1								1
Uppsala		1		1				1		1	4	8
Urbana	57	46	56	38	53	41	60	59	44	36	65	555
Uzaramo		3	1	2	1		3	5		2		17
Valdosta								2			3	5
Vancouver											2	2
Vejle	2	1	1		1	1	2	4	1			13
Vejle var. 15+							1					1
Veneziana					1							1
Victoria	2	1			1	1						5
Vilvoorde	1											1
Vinohrady										1		1
Virchow	71	64	70	104	80	61	78	79	82	80	77	846
Virginia	2		10	1	5	4	3	10	6	13	4	58
Vitkin					1						1	2
Volkmarsdorf								1				1
Wa			1								1	2
Wagenia				1			1					2
Wandsworth	5		9	12	3	5	6	2	3	7	69	121
Wangata	1	1		2		1		3	3		2	13
Waral	1					1	2					4
Warmсен											1	1
Warnow						2	1					3
Washington	3		1				1					5
Waycross	4	2	2	5	4	1	2	2	5	2		29
Wayne	1											1
Welikade	1	1	1		3	1		1				8
Weltevreden	106	67	54	59	89	65	71	94	91	91	79	866
Weltevreden var. 15+		1	1	1	3			2	1	4	4	17
Wentworth								4				4
Wernigerode		3			1				1			5

TABLE 3

Laboratory-confirmed *Salmonella* isolates from human sources reported to CDC by serotype and year, 1997-2007

Serotype	1997	1998	1999	2000	2001	2002	2003	2004	2005	2006	2007	Total
Weslaco		2	1				1		2		1	7
Westeinde									1			1
Westerstede			1									1
Westhampton	5	3	2		3	5	8	6		3	7	42
Westhampton var. 15+			2									2
Weston							1					1
Wichita							1					1
Widemarsh	2		1			2	4	1		2	2	14
Wien			1	1	3					3	2	10
Wil			1					1				2
Willamette								1				1
Willemstad	1											1
Winneba			1			1		1				3
Woodinville							2					2
Worthington	48	38	28	28	29	27	17	34	21	33	18	321
Yaba									1			1
Yehuda							1					1
Yoruba		1				1	1			1		4
Yovokome			1				1					2
Yundum						1						1
Zaiman				1							1	2
Zanzibar	2	1	1				2		1			7
Zega									2			2
Zerifin								3				3
Zwickau										1		1
I 1,3,19:-:1,7		1										1
I 3,10:-:1,6											1	1
I 3,10:e,h:-				5	6	2				2		15
I 3,10:l,v:-						1				2	2	5
I 3,10:l,z13:-				2	3							5
I 3,10:r:-				2						3		5
I 3,15,34:l,v:-						1						1
I 3,15:l,z13:-							1					1
I 4,12:l,v:-									1			1
I 4,[5],12:-:1,2	7	1	2	3	3	4	3	3	1	15	3	45
I 4,[5],12:-:1,7						1					2	3
I 4,[5],12:b:-	17	5	8	8	4	12	24	50	72	70	78	348
I 4,[5],12:b:- var. L(+) tartrate+									6	27	105	138
I 4,[5],12:d:-	1				3	5				3	5	17

TABLE 3

Laboratory-confirmed *Salmonella* isolates from human sources reported to CDC by serotype and year, 1997-2007

Serotype	1997	1998	1999	2000	2001	2002	2003	2004	2005	2006	2007	Total
I 4,[5],12:e,h:-	2		2			2	2		2	5	5	20
I 4,[5],12:i:-	189	176	138	233	260	296	548	739	823	1200	1243	5845
I 4,[5],12:r:-	3				1	1	4	17	2	1		29
I 4,[5],12:z:-		1										1
I 6,14,24:e,h:-							1					1
I 6,14,25:-:l,z13,z28										1		1
I 6,14,25:b:-								2		1	1	4
I 6,7:-:1,2					1							1
I 6,7:-:1,5	1	2	2	3	4	9	31	16	23	15	23	129
I 6,7:-:1,6							1					1
I 6,7:b:-					1			1	1			3
I 6,7:c:-										1	2	3
I 6,7:e,h:-						2	1			2	1	6
I 6,7:i:-										1		1
I 6,7:k:-	6	2	1	1	3	2	5	3	3	17	6	49
I 6,7:l,v:-						2						2
I 6,7:l,w:-				1	2	1				1		5
I 6,7:r:-								1	1	2	1	5
I 6,7:z10:-	2											2
I 6,7:z4,z23:-						1						1
I 6,8,20:z4,z24:-										1		1
I 6,8:-:1,2		1	1	1	1		1		2	1	2	10
I 6,8:-:1,5				2		1			1		2	6
I 6,8:-:e,n,x							1					1
I 6,8:b:-									1			1
I 6,8:d:-	1		2	1		3	1	1		1	9	19
I 6,8:e,h:-	2	1			1		2	3		2	2	13
I 6,8:i:-				2								2
I 6,8:z10:-						1						1
I 8,20:i:-											1	1
I 8:e,h:-											1	1
I 9,12:-:1,5				1	2	5	1	1		3	4	17
I 9,12:a:-						1						1
I 9,12:g,z51:-										1		1
I 9,12:l,v:-		1				3	1			2	1	8
I 9,12:l,z28:-	8	4	6	9	6	12	15	1	7	9	14	91
I 11:e,h:-								1				1
I 11:r:-							2					2
I 11:z10:-										1		1

TABLE 3

Laboratory-confirmed *Salmonella* isolates from human sources reported to CDC by serotype and year, 1997-2007

Serotype	1997	1998	1999	2000	2001	2002	2003	2004	2005	2006	2007	Total
I 13,22:-:1,6				1					1		1	3
I 13,22:b:-					1	2						3
I 13,22:z:-										1		1
I 13,23:-:1,5								1			2	3
I 13,23:b:-							4	3	8	4	81	100
I 13,23:i:-			1			1						2
I 16:d:-				1								1
I 16:e,h:-							1					1
I 16:l,v:-		3							2		2	7
I 28:i:-										1		1
I 38:k:-	1							1				2
I 40:-:e,n,x								2				2
I 43:k:-										3		3
I 45:b:-			1							2		3
I 47:z4,z23:-				1				1		13	2	17
II 4,12,[27]:b:[e,n,x]	2	1			1		1	1				6
II 4,12,[27]:z:e,n,x			1									1
II 4,12:-:1,6								1				1
II 4,12:a:-					1							1
II 4,12:l,w:e,n,x		1	3	4								8
II 6,7:b:z42									1			1
II 6,7:l,z28:1,5:[z42]		1										1
II 6,7:m,t:-							1					1
II 6,7:z39:1,5,7							1					1
II 6,7:z:1,5										1		1
II 9,12:b:-								1				1
II 9,12:d:e,n,x							1					1
II 9,12:g,m,[s],t:[1,5,7]:[z42]	1		1		5	1	2					10
II 9,12:g,m,s,t:e,n,x									1			1
II 9,12:g,s,t:e,n,x						1			1			2
II 9,12:l,w:e,n,x						1						1
II 9,12:l,z28:1,5				1								1
II 9,12:m,t:e,n,x	1											1
II 9,12:z39:1,7				2							1	3
II 9,46:g,[m],[s],t:[e,n,x]				1								1
II 9,46:m,t:e,n,x								1				1
II 11:g,[m],s,t:z39						1			1			2
II 11:m,t:e,n,x				1								1
II 13,22:g,m,t:[1,5]	1											1



TABLE 3

Laboratory-confirmed *Salmonella* isolates from human sources reported to CDC by serotype and year, 1997-2007

Serotype	1997	1998	1999	2000	2001	2002	2003	2004	2005	2006	2007	Total
II 13,22:z29:1,5						1	3					4
II 13,23:g,m,[s],t:[e,n,x]			1			1						2
II 13,23:z:1,5				1								1
II 16:z35:e,n,x								1				1
II 16:z4,z23:-											1	1
II 17:g,t:-				1	2	1						4
II 21:b:1,5							3					3
II 21:g,[m],[s],t:-											1	1
II 21:z10:[z6]				1	2					1	2	6
II 30:l,z28:z6								1	1	1		3
II 35:g,m,s,t:-						1						1
II 35:l,z28:-										1		1
II 35:z29:e,n,x							1					1
II 40:c:e,n,x,z15				1								1
II 40:m,t:-						1						1
II 40:z39:1,7										1		1
II 40:z4,z24:z39			1				1					2
II 41:z10:z6			1			1					1	3
II 42:b:e,n,x,z15						1			1			2
II 44:z4,z23:-									1			1
II 47:b:1,5	5	4	6	6	2		5	1	8	2	4	43
II 47:b:e,n,x,z15										1	2	3
II 47:b:z6											1	1
II 47:d:z39				2		4						6
II 48:a:z39	1											1
II 48:a:z6					2	2	1			1	1	7
II 48:b:z6							1					1
II 48:d:1,2								1				1
II 48:d:z6	1		1	3		4		1	1	2		13
II 48:g,m,t:-			1									1
II 48:k:z39		1				1						2
II 48:z39:z81							1	2	1			4
II 50:b:z6	1	4	3	1	2	4	4	2	1	2	2	26
II 58:c:z6										2	1	3
II 58:d:z6	1			1	1			1				4
II 58:l,z13,z28:z6	2	2						1	1	2	8	16
IIIa 13,22:z4,z23:-										1	1	2
IIIa 13,23:g,z51:-										1		1
IIIa 17:z4,z23:-						1						1

TABLE 3

Laboratory-confirmed *Salmonella* isolates from human sources reported to CDC by serotype and year, 1997-2007

Serotype	1997	1998	1999	2000	2001	2002	2003	2004	2005	2006	2007	Total
IIIa 18:z36:-										1		1
IIIa 18:z4,z23:-						1	7	4	13	19	7	51
IIIa 18:z4,z32:-							2			1		3
IIIa 21:g,z51:-	1			1		1			2	2		7
IIIa 21:z36:-										1		1
IIIa 35:g,z51:-									1			1
IIIa 35:z29:-								1				1
IIIa 35:z4,z23:-									1	1	1	3
IIIa 35:z4,z32:-											2	2
IIIa 40:g,z51:-				1			2					3
IIIa 40:z4,z23:-		1		1	1					2		5
IIIa 40:z4,z24:-										1		1
IIIa 41:z4,z23:-	3			1		4	2	11	6	11	13	51
IIIa 42:g,z51:-											1	1
IIIa 42:z4,z23:-	1									1	1	3
IIIa 42:z4,z24:-									1			1
IIIa 43:z29:-					1				1			2
IIIa 43:z4,z24:-									1			1
IIIa 44:z4,z23,z32:-											1	1
IIIa 44:z4,z23:-	13			5				1				19
IIIa 44:z4,z24:-							1			2		3
IIIa 45:z4,z24:-						1						1
IIIa 47:g,z51:-		1										1
IIIa 47:z4,z23:-	3									3		6
IIIa 48:g,z51:-	1		3	4	2	7	4	3	3	6	8	41
IIIa 48:z29:-						1				1	1	3
IIIa 48:z36:-					1					1		2
IIIa 48:z4,z23:-	2					2						4
IIIa 48:z4,z24:-	1		1	2	2		3		3	4	3	19
IIIa 48:z4,z32:-		1										1
IIIa 50:z4,z23:-											3	3
IIIa 50:z4,z32:-										2		2
IIIa 51:g,z51:-											1	1
IIIa 51:z4,z23:-	1	1	1			1		2		1		7
IIIa 51:z4,z24:-							1					1
IIIa 53:g,z51:-	1			1					1			3
IIIa 53:z4,z23,z32:-			4	2								6
IIIa 53:z4,z23:-	1		2					1	3	5		12
IIIa 53:z4,z24:-					1				1			2

TABLE 3

Laboratory-confirmed *Salmonella* isolates from human sources reported to CDC by serotype and year, 1997-2007

Serotype	1997	1998	1999	2000	2001	2002	2003	2004	2005	2006	2007	Total
IIIa 56:z4,z23:-	1			1					3	1	5	11
IIIa 59:z29:-							1					1
IIIa 59:z36:-							1					1
IIIa 59:z4,z23:-	1											1
IIIa 62:z4,z23:-						1						1
IIIa 63:z4,z23:-										2		2
IIIb (6),14:z10:z				1								1
IIIb 11:k:z53									1			1
IIIb 11:l,[v],[z13]:z53										1		1
IIIb 16:z10:e,n,x,z15	1	2		1	1	2	2	1			4	14
IIIb 17:l,v:e,n,x,z15							1					1
IIIb 17:z10:e,n,x,z15						1		1				2
IIIb 18:l,[v],[z13]:z								4				4
IIIb 35:i:z										1		1
IIIb 35:k:e,n,x,z15										1		1
IIIb 35:l,v:z35	2				1		1					4
IIIb 35:r:e,n,x,z15	1									1		2
IIIb 38:(k):-										1		1
IIIb 38:(k):z35				1		1	2			1	1	6
IIIb 38:l,v:z53	1			1	1							3
IIIb 38:r:z									1			1
IIIb 42:(k):z35										1		1
IIIb 47:k:z35	1	1	1			2		1		1	3	10
IIIb 47:k:z53	1											1
IIIb 47:r:z53							1					1
IIIb 47:z10:z35											1	1
IIIb 48:-:z35										1		1
IIIb 48:c:z			1		1		2					4
IIIb 48:i:-										1		1
IIIb 48:i:z	3		1	3	2	1	2	3	4	8	8	35
IIIb 48:r:e,n,x,z15											1	1
IIIb 48:r:z								1				1
IIIb 48:z52:z				1			1	1	1		1	5
IIIb 50:k:e,n,x,z15		1										1
IIIb 50:k:z		1	1	1		4	6	3		1	1	18
IIIb 50:k:z53						1				2	1	4
IIIb 50:l,v:z35								1				1
IIIb 50:r:-				1								1
IIIb 50:r:z						2	1	3	1	10	3	20

TABLE 3

Laboratory-confirmed *Salmonella* isolates from human sources reported to CDC by serotype and year, 1997-2007

Serotype	1997	1998	1999	2000	2001	2002	2003	2004	2005	2006	2007	Total
IIIb 50:r:z35											1	1
IIIb 50:z52:z35						1	1	1		1	1	5
IIIb 50:z52:z53	1											1
IIIb 50:z:z52	2				1	1	1					5
IIIb 53:k:e,n,x,z15		1								1		2
IIIb 53:k:z							1					1
IIIb 53:z10:z											1	1
IIIb 53:z10:z35									1	1	1	3
IIIb 53:z52:z53											1	1
IIIb 58:z52:z35		1						1				2
IIIb 60:r:-					1							1
IIIb 60:r:e,n,x,z15		1	1		2	1	4	4	1	4	2	20
IIIb 60:r:z	2	1	1	1		1	2	1				9
IIIb 60:r:z53	1											1
IIIb 60:z52:z53					1					2	2	5
IIIb 61:(k):z53					1							1
IIIb 61:-:1,5,[7]	1			2	1		2	1	2		6	15
IIIb 61:c:-							1					1
IIIb 61:c:z35		2			2	1	2	1	3	1	2	14
IIIb 61:i:z	1					1	1				2	5
IIIb 61:i:z53		1								1		2
IIIb 61:k:1,5,[7]	1		4	2	3		1		2	2	1	16
IIIb 61:l,[v],[z13]:-						1						1
IIIb 61:l,[v],[z13]:1,5,[7]	4	2	3			17	2	2	1	11	13	55
IIIb 61:l,[v],[z13]:z35							3	1				4
IIIb 61:l,v:z									3			3
IIIb 61:r:z					1			1				2
IIIb 61:r:z53		1			2	1	1				1	6
IIIb 61:z52:z53		1					1	1	1	4	2	10
IIIb 65:(k):z	3		1									4
IIIb 65:(k):z35											1	1
IIIb 65:(k):z53											1	1
IIIb 65:i:e,n,x,z15	1											1
IIIb 65:l,v:z53	2											2
IIIb 65:z10:e,n,x,z15										2		2
IV 6,7:z4,z23:-	3	1		2	1		1					8
IV 6,7:z4,z24:-	4	14	4	15	7	9	8	2		1		64
IV 11:z4,z23:-	2	4	2		2	1	1		1	3	2	18
IV 16:z4,z23:-	2		1						1			4

TABLE 3

Laboratory-confirmed *Salmonella* isolates from human sources reported to CDC by serotype and year, 1997-2007

Serotype	1997	1998	1999	2000	2001	2002	2003	2004	2005	2006	2007	Total
IV 16:z4,z32:-	8	8	6	13	20	11	4	3	5	7	6	91
IV 18:z36,z38:-	1											1
IV 21:g,z51:-						1						1
IV 21:z4,z23:-				1					2			3
IV 38:z4,z23:-	1			1								2
IV 40:z4,z24:-										1	2	3
IV 40:z4,z32:-			2	2					1	1	1	7
IV 43:z36,z38:-				1				1				2
IV 43:z4,z23:-	1	6	10	3	5		3	7	1	4	1	41
IV 43:z4,z32:-	2	1				2			1			6
IV 44:z36,[z38]:-					1	4	2	1			1	9
IV 44:z4,z23:-	6	7	17	4	5	15	14	7	16	11	8	110
IV 44:z4,z24:-		3		1	1			2	1			8
IV 44:z4,z32:-			2	1		3		1	5	7		19
IV 45:g,z51:-	10	3	1	4	5	1	8	8	8	7	13	68
IV 48:g,z51:-	41	48	46	46	46	42	30	13	5	11	31	359
IV 48:z4,z23:-							2					2
IV 48:z4,z24:-											1	1
IV 48:z4,z32:-				1	1		1	1		3	15	22
IV 50:g,z51:-	15	6	14	6	16	23	9	9	7	16	8	129
IV 50:z4,z23:-	43	56	64	59	14	7	6	7	6	64	89	415
IV 50:z4,z32:-			1							2	1	4
IV 51:z4,z23:-		1										1
<i>S. bongori</i> ser. 44:z39:-	1											1
<i>S. bongori</i> ser. 48:z35:-				1				1	2			4
<i>S. bongori</i> ser. 66:z81:-								1				1
Partially serotyped	696	829	914	1013	1288	1244	1362	1324	1684	1448	1187	12989
Rough, mucoid, and/or nonmotile isolates	25	35	4	14	21	48	52	61	39	110	100	509
Unknown	361	497	385	634	573	2530	3610	1999	1113	4042	3845	19589
<b>Total</b>	<b>34607</b>	<b>33971</b>	<b>32828</b>	<b>33556</b>	<b>31876</b>	<b>34911</b>	<b>37442</b>	<b>35661</b>	<b>36214</b>	<b>40666</b>	<b>39970</b>	<b>391702</b>

TABLE 3a

Partially serotyped laboratory-confirmed *Salmonella* isolates from human sources reported to CDC, by serogroup and year, 1997-2007

Serotype	1997	1998	1999	2000	2001	2002	2003	2004	2005	2006	2007	Total
Group O:11	2	6		2	46	7	1	10	35	20	4	133
Group O:13	8	17	17	18	30	22	1	11	22	15	10	171
Group O:16	2	40	44	4	5	2	2	1	7	10		117
Group O:17			1		8	2	1		1	5		18
Group O:18	1	3	4	3	4	4	2		2	2		25
Group O:21		1		1	2	1			5	3		13
Group O:28					1	3		4	8	5	1	22
Group O:30		1			1	2			5	2	1	12
Group O:35										1	1	2
Group O:38										5	1	6
Group O:39	1	1	2							3		7
Group O:40		2	1	8	6	3	1	1	4	6		32
Group O:41	2	1	1	3	5		1			1		14
Group O:43	1			1					1	1		4
Group O:44	17	5	5	2	9	10	5	4	1		1	59
Group O:45	1	2	2		4	4	1	2		1	1	18
Group O:47	3		3		1				1	2	1	11
Group O:48	4	4	10	8	13	11	5	1	18	2	1	77
Group O:50	8	3	10	17	99	72	4	18	114	47	2	394
Group O:51					2							2
Group O:53	1	1		1	1	1						5
Group O:56					1							1
Group O:58	1		1	1	1		1					5
Group O:6,14		1	2	5		5	1		2			16
Group O:60	1	1		1								3
Group O:62			1									1
Group O:63			1									1
Group O:65				1	1	1						3
Subspecies I	10	45	77	76	43	53	99	157	155	101	239	1055
Subspecies I, Group A	1	2	4		2	4	4	1	2	7	7	34
Subspecies I, Group B	293	394	366	503	430	561	447	404	479	528	355	4760
Subspecies I, Group C1	88	77	135	87	108	112	160	141	138	206	194	1446
Subspecies I, Group C2	62	47	46	36	103	87	213	151	191	105	88	1129
Subspecies I, Group D1	105	106	79	95	199	140	257	269	283	200	109	1842
Subspecies I, Group D2	1		1	1		1	1	3	5			13
Subspecies I, Group E1	15	15	17	39	55	24	39	35	35	16	17	307
Subspecies I, Group E4	2	1	2		1		9	6	7	9	2	39
Subspecies I, Group O:11										1		1
Subspecies I, Group O:13										4		4

TABLE 3a

Partially serotyped laboratory-confirmed *Salmonella* isolates from human sources reported to CDC, by serogroup and year, 1997-2007

Serotype	1997	1998	1999	2000	2001	2002	2003	2004	2005	2006	2007	Total
Subspecies I, Group O:30						1						1
Subspecies I, Group O:35						1						1
Subspecies I, Group O:38									1	1		2
Subspecies I, Group O:40										1		1
Subspecies I, Group O:47										1		1
Subspecies I, Group O:48							2					2
Subspecies I, Group O:51										1		1
Subspecies II	7	4	5	8	10	5	2	5	9	3	21	79
Subspecies IIIa	5	12	16	11	16	11	17	24	27	20	9	168
Subspecies IIIa, Group O:13							1			1		2
Subspecies IIIa, Group O:40										1		1
Subspecies IIIa, Group O:48										1		1
Subspecies IIIa, Group O:63						1						1
Subspecies IIIa/IIIb	22	13	19	36	41	40	32	25	40	29	40	337
Subspecies IIIb	10	6	9	18	6	21	26	16	32	22	17	183
Subspecies IIIb, Group O:35		1	4	1	5	6	1	1	1			20
Subspecies IIIb, Group O:38	1	1		2	1	3	2	1	4			15
Subspecies IIIb, Group O:42									1			1
Subspecies IIIb, Group O:47							1		3	18		22
Subspecies IIIb, Group O:50										1		1
Subspecies IIIb, Group O:57						1						1
Subspecies IIIb, Group O:60										1		1
Subspecies IIIb, Group O:61			4	2	5	2				1	2	16
Subspecies IIIb, Group O:65									1		1	2
Subspecies IV	21	16	25	22	23	19	23	33	44	33	58	317
Subspecies IV, Group O:11						1						1
Subspecies IV, Group O:43										1		1
Subspecies IV, Group O:50										2		2
Subspecies VI										2	4	6
<b>Total</b>	<b>696</b>	<b>829</b>	<b>914</b>	<b>1013</b>	<b>1288</b>	<b>1244</b>	<b>1362</b>	<b>1324</b>	<b>1684</b>	<b>1448</b>	<b>1187</b>	<b>12989</b>

TABLE 4

Laboratory-confirmed *Salmonella* isolates from human sources reported to CDC by serotype and geographic region, 2007

Serotype	New England	Mid Atlantic	East North Central	West North Central	South Atlantic	East South Central	West South Central	Mountain	Pacific	Total
Aarhus		5		1						6
Abaetetuba					2				1	3
Aberdeen		3	1	1	3	1		1	3	13
Abony			1					1	1	3
Adelaide		6	16	3	10	1	1	1	21	59
Agama			1		1					2
Agbeni		4	8	1	1			1	1	16
Ago			1		1				2	4
Agona	19	44	52	44	55	15	19	81	183	512
Agoueve								1	1	2
Ahoutoue		1								1
Alachua	2	3		2	5	2		1	4	19
Albany	2	4	3		5	2		8	12	36
Altona			1	1		1			3	6
Amager				1		1	1		1	4
Amoutive				1					1	2
Amsterdam								2		2
Anatum	8	33	38	21	26	9	8	24	36	203
Anatum var. 15+				1	1			1	4	7
Anecho		1	1		4				3	9
Anfo		1							1	2
Apapa	2	1	1	1	2			1	5	13
Aqua					1					1
Arechavaleta	1	1		1			9		1	13
Baildon		5	1	1	9				1	17
Ball									1	1
Bardo		1		5	19				8	33
Bareilly	5	7	10	16	99	66	32	2	12	249
Barranquilla	1		1	2	2					6
Beaudesert									2	2
Bere					6				1	7
Berta	7	36	40	12	51	11	13	7	14	191
Birkenhead									1	1
Blockley	4	14	5	6	6	1		1	29	66
Bonariensis		1	1		1				1	4
Bournemouth				1	1					2
Bovismorbificans	2	4	13	5	5	4		4	10	47
Bradford		1								1
Braenderup	33	89	54	41	110	49	77	36	100	589
Brandenburg		7	10	7	12	6	3	6	22	73
Brazil					2	1				3



TABLE 4

Laboratory-confirmed *Salmonella* isolates from human sources reported to CDC by serotype and geographic region, 2007

Serotype	New England	Mid Atlantic	East North Central	West North Central	South Atlantic	East South Central	West South Central	Mountain	Pacific	Total
Brazzaville	1									1
Bredeney	1	8	1	4	2	2		5		23
Breukelen							1			1
Bronx				1						1
Budapest								1		1
Bukavu		1							1	2
Burgas					1					1
Buzu	2									2
Carmel			1	1	1			1		4
Carrau				1						1
Cerro		4	3	4	3	1	2	4	5	26
Cerro var. 14+			1					1	3	5
Chandans		1								1
Chester	2	13	3		4		2	1	6	31
Chicago								1	1	2
Chingola						1				1
Choleraesuis	1	3		1	4	1	2		3	15
Choleraesuis var. Kunzendorf		2	2					4	2	10
Clackamas									2	2
Coeln				1	2				1	4
Colindale		1	1		1	1			1	5
Concord	4	8		1	3			2	2	20
Corvallis	1	4	1	4	1				11	22
Cotham		3		2	1	2		2	5	15
Cubana		8	3				2	4	8	25
Dahra			1							1
Dakar					1					1
Daytona		1								1
Denver				2				1		3
Derby	12	27	18	18	25	8	3	4	33	148
Djugu						2				2
Dublin	13	23	7	5	5	1		22	33	109
Duesseldorf				1	1				1	3
Duisburg									2	2
Durban		1	1		2	1		2	5	12
Durham		1								1
Ealing	1	4	3	3	3	1	8	2	3	28
Eastbourne	1	1	3	2	2	1		1	5	16
Edinburg		3	1	1	1	1		1		8
Elisabethville		2								2
Elomrane				1						1

TABLE 4

Laboratory-confirmed *Salmonella* isolates from human sources reported to CDC by serotype and geographic region, 2007

Serotype	New England	Mid Atlantic	East North Central	West North Central	South Atlantic	East South Central	West South Central	Mountain	Pacific	Total
Emek	1	1							5	7
Entebbe						1			5	6
Enteritidis	389	1448	734	449	1162	292	194	388	1096	6152
Eppendorf		1								1
Escanaba						1				1
Essen			1	4						5
Falkensee				1						1
Fischerstrasse		4								4
Florida		1			3	1		1	1	7
Fluntern			2	1					2	5
Fresno					1					1
Friedrichsfelde		1								1
Gallinarum								1		1
Gaminara	3	4	4	5	19	15	11	10	8	79
Gatow		1			1					2
Gatuni	1	1								2
Georgia		2					2		1	5
Give	2	12	7	3	25	20	11	11	15	106
Give var. 15+		1		1		2		2		6
Glasgow								2		2
Glostrup		2			1				2	5
Gnesta			2							2
Goettingen								3		3
Goldcoast			1							1
Goverdhan			1							1
Grumpensis	1						1			2
Guildford									1	1
Guinea					2				1	3
Haardt					1				4	5
Hadar	22	69	45	25	23	17	8	23	53	285
Haifa		1				2		1	1	5
Hartford	6	15	51	20	50	41	7	3	4	197
Hato				2						2
Havana		4	3	3	9	5		5	6	35
Heidelberg	70	230	357	79	157	115	61	152	389	1610
Herston					1					1
Holcomb		3			1					4
Holocomb		1								1
Hull				1	2			1	1	5
Hvittingfoss	2	12	7	3	7	2	3	9	10	55
Ibadan					2					2

TABLE 4

Laboratory-confirmed *Salmonella* isolates from human sources reported to CDC by serotype and geographic region, 2007

Serotype	New England	Mid Atlantic	East North Central	West North Central	South Atlantic	East South Central	West South Central	Mountain	Pacific	Total
Idikan						1		1		2
Indiana	3	2	1						5	11
Infantis	27	73	61	42	72	24	86	37	118	540
Inganda	2									2
Inverness		1			39	17			1	58
Irumu	1	1		1	1				1	5
Isangi	1	2							1	4
Israel					3		1			4
Istanbul		1	1		1				1	4
Itami	1									1
Ituri					1					1
Jaffna					1					1
Jangwani		3	1			1			3	8
Javiana	15	73	47	47	654	220	148	76	51	1331
Joal						1				1
Johannesburg	1	6	4	7	9		2	1	8	38
Kedougou				1						1
Kentucky	16	31	6	5	6	3	3	9	17	96
Kiambu		5	4	3	4	3	10	1	4	34
Kimuenza	1									1
Kingabwa			2	2	1	1			2	8
Kingston			1		1					2
Kintambo		1	1		1	1		1	3	8
Kisarawe									3	3
Kisii	1									1
Kokomlele					3					3
Konstanz	1									1
Kottbus		3	1	2			1	1	5	13
Kua		1								1
Lagos		3		1						4
Lansing								1		1
Larochelle					1	2				3
Lattenkamp	1									1
Lexington			1					1	2	4
Lille									1	1
Lindenburg					2					2
Litchfield	15	66	19	15	28	26	22	6	41	238
Liverpool		1	1						1	3
Livingstone		1		1	2				4	8
Livingstone var. 14+			1							1
Loanda					3					3

TABLE 4

Laboratory-confirmed *Salmonella* isolates from human sources reported to CDC by serotype and geographic region, 2007

Serotype	New England	Mid Atlantic	East North Central	West North Central	South Atlantic	East South Central	West South Central	Mountain	Pacific	Total
Lockleaze					1					1
Lomalinda	2	2			2	1		1	4	12
Lomita		1								1
London	1	7	2	4	153	3		1	5	176
Luciana				1		3	2	3		9
Macallen						1				1
Madelia		1		2	7				1	11
Manhattan	5	8	7	3	7	3	2	1	19	55
Matadi		1							1	2
Matopeni					1					1
Maumee					1					1
Mbandaka	11	21	27	19	18	37	10	10	78	231
Meleagridis		1	6	1	3	1		5	9	26
Meleagridis var. 15+					1					1
Menston				1						1
Mgulani						1				1
Miami	13	5	5	7	49	7	2	3	6	97
Michigan								3	4	7
Mikawasima		1				1				2
Minnesota		3	2	4	12	2	1	6	4	34
Mississippi	4	19	7	7	121	213	91	6	4	472
Molade			1					1		2
Mono				30						30
Monschau		7	1	1				1	1	11
Montevideo	33	97	73	101	193	87	78	140	201	1003
Mountpleasant					1					1
Muenchen	18	62	153	111	261	146	41	60	143	995
Muenster	5	15	11	5	5	7		8	14	70
Muenster var. 15+					1					1
Muenster var. 15+, 34+					1					1
Napoli									1	1
Nchanga var. 15+					1					1
Nessziona					1					1
Neudorf		1								1
Newmexico								1		1
Newport	117	317	256	237	1039	421	535	265	433	3620
Newyork			1							1
Nigeria						1				1
Nima			1		2	1			4	8
Nitra					1					1
Norwich	2	8	6	14	17	26	42	3		118

TABLE 4

Laboratory-confirmed *Salmonella* isolates from human sources reported to CDC by serotype and geographic region, 2007

Serotype	New England	Mid Atlantic	East North Central	West North Central	South Atlantic	East South Central	West South Central	Mountain	Pacific	Total
Nottingham				1	3					4
Nyanza						1				1
Nyborg					1					1
Oakland									1	1
Offa					2					2
Ohio	6	9	5	1	3	5		2	15	46
Ohio var. 14+						2			2	4
Oldenburg						1				1
Oranienburg	42	83	96	32	108	39	35	134	123	692
Oranienburg var. 14+	1		1			1				3
Orion	2		2	1					1	6
Orion var. 15+					1					1
Oskarshamn				1						1
Oslo	1	6	2	2	1				8	20
Othmarschen			2	1	9	3		1		16
Overschie				1	1					2
Pakistan					1				2	3
Panama	10	22	18	9	37	3	7	38	33	177
Paratyphi A	8	53	20	9	33	1	12	4	51	191
Paratyphi B	3	28	21	18	7	15	10	10	39	151
Paratyphi B var. L(+) tartrate+	17	60	32	22	65	39	48	37	92	412
Paratyphi C								1		1
Pensacola	2			3	2	3	2			12
Plymouth									1	1
Poano								1	1	2
Pomona	6	18	4	1	9	7	1	7	12	65
Poona	11	46	21	8	38	18	6	74	29	251
Potsdam	2	3	1	2	1	1			7	17
Praha					1					1
Presov		1								1
Putten			1	2	1	1				5
Reading	4	7	10	4	10		2	3	18	58
Remo								1		1
Rhone		1								1
Richmond	1	3	2		4				2	12
Ridge								1		1
Rissen	1	1	1	1	2				5	11
Romanby									1	1
Roodepoort									1	1
Rubislaw	1	7	3	3	48	20	41	3	3	129
Saintemarie		1								1

TABLE 4

Laboratory-confirmed *Salmonella* isolates from human sources reported to CDC by serotype and geographic region, 2007

Serotype	New England	Mid Atlantic	East North Central	West North Central	South Atlantic	East South Central	West South Central	Mountain	Pacific	Total
Saintpaul	28	68	45	32	139	35	22	35	116	520
Sandiego	8	46	20	6	52	7	2	23	36	200
Sanjuan			1							1
Saphra									1	1
Schleissheim						1				1
Schwarzengrund	78	137	17	17	39	4	1		14	307
Senftenberg	8	26	11	13	7	5	10	13	75	168
Shubra		1	1							2
Simi		1								1
Singapore		1	1		1				5	8
Soerenga	3		1					2	1	7
Stachus		1								1
Stanley	11	41	42	7	36	10	5	11	95	258
Stanleyville	1	1	1		2				1	6
Sternschanze		1								1
Stockholm var. 15+	1									1
Suelldorf					2					2
Sundsvall				1				2		3
Tabligbo				1						1
Takoradi							1			1
Tallahassee			3		4					7
Telelkebir	4	15	5	4	8	1		6	25	68
Tennessee	18	129	86	76	123	75	40	47	22	616
Thompson	34	89	70	66	31	26	27	24	47	414
Tiko		1								1
Tucson			3						1	4
Typhi	27	123	27	12	107	5	8	21	120	450
Typhimurium	220	908	636	506	1134	472	367	308	764	5315
Typhimurium var. 5-	66	99	114	111	165	52		178	179	964
Uganda	7	11	9	5	5	2	4	9	19	71
Uganda var. 15+			1						1	2
Uppsala							4			4
Urbana	3	11	4		17	6	11	5	8	65
Valdosta					3					3
Vancouver					1				1	2
Virchow	8	25	6	4	13	1	1	4	15	77
Virginia				1	2				1	4
Vitkin			1							1
Wa	1									1
Wandsworth	8	30	6	2	4	1		5	13	69
Wangata		1							1	2

TABLE 4

Laboratory-confirmed *Salmonella* isolates from human sources reported to CDC by serotype and geographic region, 2007

Serotype	New England	Mid Atlantic	East North Central	West North Central	South Atlantic	East South Central	West South Central	Mountain	Pacific	Total
Warmesen		1								1
Weltevreden	6	4	9	3	12	1		3	41	79
Weltevreden var. 15+								1	3	4
Weslaco				1						1
Westhampton			1						6	7
Widemarsh								1	1	2
Wien	1				1					2
Worthington	1	4	3	2	1	1	1		5	18
Zaiman				1						1
I 3,10:-:1,6				1						1
I 3,10:l,v:-									2	2
I 4,[5],12:-:1,2					2				1	3
I 4,[5],12:-:1,7				2						2
I 4,[5],12:b:-	1	23	19	4	14	1	2	6	8	78
I 4,[5],12:b:- var. L(+) tartrate+	1		32	10	20			6	36	105
I 4,[5],12:d:-	2			1	2					5
I 4,[5],12:e,h:-	2		1	2						5
I 4,[5],12:i:-	78	142	205	148	195	107	24	103	241	1243
I 6,14,25:b:-					1					1
I 6,7:-:1,5			8		4			2	9	23
I 6,7:c:-	1								1	2
I 6,7:e,h:-						1				1
I 6,7:k:-	1			2	2				1	6
I 6,7:r:-									1	1
I 6,8:-:1,2									2	2
I 6,8:-:1,5					1				1	2
I 6,8:d:-			1		2	1			5	9
I 6,8:e,h:-					2					2
I 8,20:i:-					1					1
I 8:e,h:-					1					1
I 9,12:-:1,5					3				1	4
I 9,12:l,v:-		1								1
I 9,12:l,z28:-	1		1	2	4	2		3	1	14
I 13,22:-:1,6			1							1
I 13,23:-:1,5						1			1	2
I 13,23:b:-				1	80					81
I 16:l,v:-									2	2
I 47:z4,z23:-									2	2
II 9,12:z39:1,7			1							1
II 16:z4,z23:-					1					1
II 21:g,[m],[s],t:-									1	1

TABLE 4

Laboratory-confirmed *Salmonella* isolates from human sources reported to CDC by serotype and geographic region, 2007

Serotype	New England	Mid Atlantic	East North Central	West North Central	South Atlantic	East South Central	West South Central	Mountain	Pacific	Total
II 21:z10:[z6]			1					1		2
II 41:z10:z6		1								1
II 47:b:1,5							1	3		4
II 47:b:e,n,x,z15								1	1	2
II 47:b:z6									1	1
II 48:a:z6								1		1
II 50:b:z6				1				1		2
II 58:c:z6					1					1
II 58:l,z13,z28:z6		1	4						3	8
IIIa 13,22:z4,z23:-									1	1
IIIa 18:z4,z23:-			1						6	7
IIIa 35:z4,z23:-				1						1
IIIa 35:z4,z32:-								1	1	2
IIIa 41:z4,z23:-			2					3	8	13
IIIa 42:g,z51:-								1		1
IIIa 42:z4,z23:-								1		1
IIIa 44:z4,z23,z32:-		1								1
IIIa 48:g,z51:-					5				3	8
IIIa 48:z29:-								1		1
IIIa 48:z4,z24:-					1			1	1	3
IIIa 50:z4,z23:-					2				1	3
IIIa 51:g,z51:-									1	1
IIIa 56:z4,z23:-									5	5
IIIb 16:z10:e,n,x,z15	2								2	4
IIIb 38:(k):z35									1	1
IIIb 47:k:z35	1								2	3
IIIb 47:z10:z35									1	1
IIIb 48:i:z				2		1		3	2	8
IIIb 48:r:e,n,x,z15					1					1
IIIb 48:z52:z									1	1
IIIb 50:k:z				1						1
IIIb 50:k:z53									1	1
IIIb 50:r:z		1		1					1	3
IIIb 50:r:z35	1									1
IIIb 50:z52:z35									1	1
IIIb 53:z10:z			1							1
IIIb 53:z10:z35			1							1
IIIb 53:z52:z53			1							1
IIIb 60:r:e,n,x,z15			1						1	2
IIIb 60:z52:z53	2									2
IIIb 61:-:1,5,[7]				1		1			4	6



TABLE 4

Laboratory-confirmed *Salmonella* isolates from human sources reported to CDC by serotype and geographic region, 2007

Serotype	New England	Mid Atlantic	East North Central	West North Central	South Atlantic	East South Central	West South Central	Mountain	Pacific	Total
IIIb 61:c:z35			1						1	2
IIIb 61:i:z			2							2
IIIb 61:k:1,5,[7]			1							1
IIIb 61:l,[v],[z13]:1,5,[7]				1				2	10	13
IIIb 61:r:z53			1							1
IIIb 61:z52:z53				1		1				2
IIIb 65:(k):z35				1						1
IIIb 65:(k):z53									1	1
IV 11:z4,z23:-							2			2
IV 16:z4,z32:-	1		1		2				2	6
IV 40:z4,z24:-					2					2
IV 40:z4,z32:-			1							1
IV 43:z4,z23:-	1									1
IV 44:z36,[z38]:-			1							1
IV 44:z4,z23:-				1	3	1			3	8
IV 45:g,z51:-	2		2		3	1			5	13
IV 48:g,z51:-	3	2	7	1	9			3	6	31
IV 48:z4,z24:-								1		1
IV 48:z4,z32:-					15					15
IV 50:g,z51:-	2		1			1			4	8
IV 50:z4,z23:-	1			1	80	2			5	89
IV 50:z4,z32:-									1	1
Partially serotyped	23	204	67	94	241	44	303	172	39	1187
Rough, mucoid, and/or nonmotile isolates	12	1	10	11	19	3	2	21	21	100
Unknown	160	49	178	179	607	155	2385	85	47	3845
<b>Total</b>	<b>1877</b>	<b>5606</b>	<b>4155</b>	<b>2963</b>	<b>8325</b>	<b>3157</b>	<b>4945</b>	<b>2940</b>	<b>6002</b>	<b>39970</b>

TABLE 5

Laboratory-confirmed *Salmonella* isolates from human sources reported to CDC by serotype, geographic region, and state, 2007

Region=New England

Serotype	Connecticut	Maine	Massachusetts	New Hampshire	Rhode Island	Vermont	Total
Agona	5		9	3	2		19
Alachua	2						2
Albany			1	1			2
Anatum	1		3	3	1		8
Apapa	1			1			2
Arechavaleta			1				1
Bareilly			4	1			5
Barranquilla					1		1
Berta	1		4	1	1		7
Blockley	2		2				4
Bovismorbificans				2			2
Braenderup	4		24	3	2		33
Brazzaville				1			1
Bredeney			1				1
Buzu				2			2
Chester	2						2
Choleraesuis	1						1
Concord	1		2	1			4
Corvallis				1			1
Derby	1	2	8	1			12
Dublin	6	2	4		1		13
Ealing			1				1
Eastbourne				1			1
Emek	1						1
Enteritidis	108	4	196	49	28	4	389
Gaminara			3				3
Gatuni	1						1
Give			2				2
Grumpensis					1		1
Hadar	4	3	11	1	2	1	22
Hartford	1		5				6
Heidelberg	19	1	35	10	4	1	70
Hvittingfoss			1		1		2
Indiana			3				3
Infantis	11		14	1	1		27
Inganda			2				2
Irumu			1				1
Isangi			1				1
Itami				1			1
Javiana	1		13	1			15

TABLE 5

Laboratory-confirmed *Salmonella* isolates from human sources reported to CDC by serotype, geographic region, and state, 2007

## Region=New England

Serotype	Connecticut	Maine	Massachusetts	New Hampshire	Rhode Island	Vermont	Total
Johannesburg	1						1
Kentucky	2		13		1		16
Kimuenza			1				1
Kisii			1				1
Konstanz			1				1
Lattenkamp	1						1
Litchfield	4		7	2	1	1	15
Lomalinda			2				2
London			1				1
Manhattan	1	1	3				5
Mbandaka	2		5	3	1		11
Miami	2		9		2		13
Mississippi			3		1		4
Montevideo	5	1	25	2			33
Muenchen		4	7	6	1		18
Muenster			3	2			5
Newport	28	15	45	17	10	2	117
Norwich			2				2
Ohio	1		5				6
Oranienburg	8	1	28	1	4		42
Oranienburg var. 14+				1			1
Orion			2				2
Oslo	1						1
Panama	5		5				10
Paratyphi A	2		4	1	1		8
Paratyphi B			2	1			3
Paratyphi B var. L(+) tartrate+	2		10		3	2	17
Pensacola	1		1				2
Pomona	1		5				6
Poona	3	1	4	3			11
Potsdam	1		1				2
Reading	1		1		2		4
Richmond			1				1
Rissen	1						1
Rubislaw	1						1
Saintpaul	7	1	17	1	2		28
Sandiego	1		6		1		8
Schwarzengrund			74	3	1		78
Senftenberg	1	1	4	1	1		8
Soerenga			3				3

TABLE 5

Laboratory-confirmed *Salmonella* isolates from human sources reported to CDC by serotype, geographic region, and state, 2007

## Region=New England

Serotype	Connecticut	Maine	Massachusetts	New Hampshire	Rhode Island	Vermont	Total
Stanley	3	2	4	2			11
Stanleyville			1				1
Stockholm var. 15+			1				1
Telelkebir			2	1	1		4
Tennessee	3		13	1	1		18
Thompson	9	2	18	4	1		34
Typhi	7		15	3	2		27
Typhimurium	62	3	111	23	20	1	220
Typhimurium var. 5-	10	4	45	2	5		66
Uganda			7				7
Urbana					3		3
Virchow	2		4		2		8
Wa					1		1
Wandsworth	2		4	2			8
Weltevreden	4		2				6
Wien			1				1
Worthington			1				1
I 4,[5],12:b:-				1			1
I 4,[5],12:b:- var. L(+) tartrate+	1						1
I 4,[5],12:d:-			2				2
I 4,[5],12:e,h:-	2						2
I 4,[5],12:i:-	28		39	5	6		78
I 6,7:c:-			1				1
I 6,7:k:-	1						1
I 9,12:l,z28:-	1						1
IIIb 16:z10:e,n,x,z15			1		1		2
IIIb 47:k:z35	1						1
IIIb 50:r:z35	1						1
IIIb 60:z52:z53			2				2
IV 16:z4,z32:-				1			1
IV 43:z4,z23:-				1			1
IV 45:g,z51:-			2				2
IV 48:g,z51:-			2		1		3
IV 50:g,z51:-			1	1			2
IV 50:z4,z23:-			1				1
Partially serotyped	2	17		2	2		23
Rough, mucoid, and/or nonmotile isolates	4		8				12
Unknown	12	117	28	2		1	160
<b>Total</b>	<b>411</b>	<b>182</b>	<b>968</b>	<b>180</b>	<b>123</b>	<b>13</b>	<b>1877</b>

TABLE 5

Laboratory-confirmed *Salmonella* isolates from human sources reported to CDC by serotype, geographic region, and state, 2007

Region=Mid Atlantic

Serotype	States			Total
	New Jersey	New York	Pennsylvania	
Aarhus		5		5
Aberdeen		2	1	3
Adelaide		4	2	6
Agbeni			4	4
Agona	5	22	17	44
Ahoutoue			1	1
Alachua		1	2	3
Albany	1	1	2	4
Anatum	3	23	7	33
Anecho			1	1
Anfo		1		1
Apapa		1		1
Arechavaleta			1	1
Baildon		3	2	5
Bardo			1	1
Bareilly	1	4	2	7
Berta	2	14	20	36
Blockley	1	6	7	14
Bonariensis		1		1
Bovismorbificans		2	2	4
Bradford		1		1
Braenderup	8	26	55	89
Brandenburg		2	5	7
Bredeney		4	4	8
Bukavu			1	1
Cerro	1	1	2	4
Chandans			1	1
Chester		5	8	13
Choleraesuis		3		3
Choleraesuis var. Kunzendorf		1	1	2
Colindale		1		1
Concord		8		8
Corvallis		3	1	4
Cotham	1	2		3
Cubana		1	7	8
Daytona		1		1
Derby	1	15	11	27
Dublin	2	17	4	23
Durban		1		1

TABLE 5

Laboratory-confirmed *Salmonella* isolates from human sources reported to CDC by serotype, geographic region, and state, 2007

## Region=Mid Atlantic

Serotype	States			Total
	New Jersey	New York	Pennsylvania	
Durham		1		1
Ealing		2	2	4
Eastbourne		1		1
Edinburg			3	3
Elisabethville			2	2
Emek		1		1
Enteritidis	91	757	600	1448
Eppendorf		1		1
Fischerstrasse			4	4
Florida			1	1
Friedrichsfelde		1		1
Gaminara			4	4
Gatow	1			1
Gatuni		1		1
Georgia		2		2
Give	1	8	3	12
Give var. 15+	1			1
Glostrup		2		2
Hadar	9	42	18	69
Haifa		1		1
Hartford		7	8	15
Havana		2	2	4
Heidelberg	14	161	55	230
Holcomb		3		3
Holocomb			1	1
Hvittingfoss	1	10	1	12
Indiana		1	1	2
Infantis	4	53	16	73
Inverness			1	1
Irumu			1	1
Isangi			2	2
Istanbul		1		1
Jangwani		3		3
Javiana	9	27	37	73
Johannesburg		5	1	6
Kentucky	1	22	8	31
Kiambu		4	1	5
Kintambo			1	1
Kottbus		3		3

TABLE 5

Laboratory-confirmed *Salmonella* isolates from human sources reported to CDC by serotype, geographic region, and state, 2007

## Region=Mid Atlantic

Serotype	States			Total
	New Jersey	New York	Pennsylvania	
Kua		1		1
Lagos	1	2		3
Litchfield	2	34	30	66
Liverpool		1		1
Livingstone		1		1
Lomalinda			2	2
Lomita	1			1
London	1	6		7
Madelia		1		1
Manhattan	1	7		8
Matadi		1		1
Mbandaka		11	10	21
Meleagridis			1	1
Miami	2	2	1	5
Mikawasima		1		1
Minnesota		3		3
Mississippi	2	7	10	19
Monschau		3	4	7
Montevideo	8	54	35	97
Muenchen	2	29	31	62
Muenster	1	5	9	15
Neudorf		1		1
Newport	29	173	115	317
Norwich	1	1	6	8
Ohio		2	7	9
Oranienburg	4	43	36	83
Oslo		4	2	6
Panama	3	11	8	22
Paratyphi A	9	33	11	53
Paratyphi B		19	9	28
Paratyphi B var. L(+) tartrate+	1	16	43	60
Pomona		15	3	18
Poona	3	37	6	46
Potsdam		2	1	3
Presov	1			1
Reading	1	6		7
Rhone		1		1
Richmond	1		2	3
Rissen		1		1

TABLE 5

Laboratory-confirmed *Salmonella* isolates from human sources reported to CDC by serotype, geographic region, and state, 2007

## Region=Mid Atlantic

Serotype	States			Total
	New Jersey	New York	Pennsylvania	
Rubislaw			7	7
Saintemarie		1		1
Saintpaul	8	38	22	68
Sandiego	6	27	13	46
Schwarzengrund	5	96	36	137
Senftenberg		14	12	26
Shubra		1		1
Simi			1	1
Singapore		1		1
Stachus		1		1
Stanley	6	25	10	41
Stanleyville		1		1
Sternschanze			1	1
Teitelkebir	1	11	3	15
Tennessee	1	82	46	129
Thompson	7	51	31	89
Tiko			1	1
Typhi	9	100	14	123
Typhimurium	32	388	488	908
Typhimurium var. 5-	19	48	32	99
Uganda		11		11
Urbana		1	10	11
Virchow	3	19	3	25
Wandsworth	1	20	9	30
Wangata		1		1
Warmesen		1		1
Weltevreden	1	1	2	4
Worthington		3	1	4
I 4,[5],12:b:-		23		23
I 4,[5],12:i:-		89	53	142
I 9,12:l,v:-		1		1
II 41:z10:z6		1		1
II 58:l,z13,z28:z6		1		1
IIIa 44:z4,z23,z32:-	1			1
IIIb 50:r:z		1		1
IV 48:g,z51:-		2		2
Partially serotyped	51	123	30	204
Rough, mucoid, and/or nonmotile isolates		1		1



TABLE 5

Laboratory-confirmed *Salmonella* isolates from human sources reported to CDC by serotype, geographic region, and state, 2007

**Region=Mid Atlantic**

	States			
Serotype	New Jersey	New York	Pennsylvania	Total
Unknown	1	25	23	49
<b>Total</b>	<b>384</b>	<b>3047</b>	<b>2175</b>	<b>5606</b>

TABLE 5

Laboratory-confirmed *Salmonella* isolates from human sources reported to CDC by serotype, geographic region, and state, 2007

Region=East North Central

Serotype	States					Total
	Illinois	Indiana	Michigan	Ohio	Wisconsin	
Aberdeen			1			1
Abony			1			1
Adelaide	9	1	1	2	3	16
Agama			1			1
Agbeni	1	3		3	1	8
Ago		1				1
Agona	14	5	12	9	12	52
Albany				1	2	3
Altona	1					1
Anatum	9	8	10	1	10	38
Anecho			1			1
Apapa					1	1
Baildon			1			1
Bareilly	2	4	1	3		10
Barranquilla		1				1
Berta	9	20	5	6		40
Blockley	2				3	5
Bonariensis	1					1
Bovismorbificans	3	5	4		1	13
Braenderup	15	12	11	5	11	54
Brandenburg	5	1			4	10
Bredeney					1	1
Carmel	1					1
Cerro	1		1		1	3
Cerro var. 14+	1					1
Chester	1			2		3
Choleraesuis var. Kunzendorf	2					2
Colindale	1					1
Corvallis			1			1
Cubana		2		1		3
Dahra	1					1
Derby	6	4	4	1	3	18
Dublin		3	3	1		7
Durban		1				1
Ealing					3	3
Eastbourne	2				1	3
Edinburg					1	1
Enteritidis	224	139	186	57	128	734
Essen			1			1
Fluntern	2					2

TABLE 5

Laboratory-confirmed *Salmonella* isolates from human sources reported to CDC by serotype, geographic region, and state, 2007

## Region=East North Central

Serotype	States					Total
	Illinois	Indiana	Michigan	Ohio	Wisconsin	
Gaminara	1	1	2			4
Give	3		1	1	2	7
Gnesta			2			2
Goldcoast		1				1
Goverdhan	1					1
Hadar	10	6	12	4	13	45
Hartford	5	24	13	7	2	51
Havana	1	1	1			3
Heidelberg	198	44	53	26	36	357
Hvittingfoss	2	2		2	1	7
Indiana		1				1
Infantis	26	7	8	4	16	61
Istanbul	1					1
Jangwani	1					1
Javiana	6	8	12	5	16	47
Johannesburg	3	1				4
Kentucky	1	1	2		2	6
Kiambu			2		2	4
Kingabwa				2		2
Kingston					1	1
Kintambo			1			1
Kottbus			1			1
Lexington	1					1
Litchfield	7	1	3	4	4	19
Liverpool					1	1
Livingstone var. 14+					1	1
London				1	1	2
Manhattan	3	1	1	1	1	7
Mbandaka	9	3	7	1	7	27
Meleagridis	2		2	1	1	6
Miami		1	2		2	5
Minnesota	2					2
Mississippi	6				1	7
Molade		1				1
Monschau					1	1
Montevideo	31	7	11	2	22	73
Muenchen	87	17	11	3	35	153
Muenster	1	1	4	2	3	11
Newport	86	39	47	21	63	256
Newyork		1				1

TABLE 5

Laboratory-confirmed *Salmonella* isolates from human sources reported to CDC by serotype, geographic region, and state, 2007

## Region=East North Central

Serotype	States					Total
	Illinois	Indiana	Michigan	Ohio	Wisconsin	
Nima		1				1
Norwich		3	1	2		6
Ohio	1		1	2	1	5
Oranienburg	28	15	18	19	16	96
Oranienburg var. 14+	1					1
Orion	1				1	2
Oslo		1	1			2
Othmarschen					2	2
Panama	5	3	3	3	4	18
Paratyphi A	6		3	8	3	20
Paratyphi B	3		18			21
Paratyphi B var. L(+) tartrate+	9	4		6	13	32
Pomona			4			4
Poona	8	2	4	3	4	21
Potsdam		1				1
Putten					1	1
Reading	6	1	2		1	10
Richmond	1				1	2
Rissen		1				1
Rubislaw	1	1		1		3
Saintpaul	18	7	10	2	8	45
Sandiego	9	2	2	1	6	20
Sanjuan			1			1
Schwarzengrund	4	2	5	3	3	17
Senftenberg	4	1	1	4	1	11
Shubra	1					1
Singapore			1			1
Soerenga			1			1
Stanley	9	3	17	4	9	42
Stanleyville	1					1
Tallahassee			2		1	3
Telelkebir	1	2	1		1	5
Tennessee	26	25	19	4	12	86
Thompson	11	15	20	9	15	70
Tucson					3	3
Typhi	16	2	6		3	27
Typhimurium	218	95	168	60	95	636
Typhimurium var. 5-	8	30		15	61	114
Uganda	2				7	9
Uganda var. 15+					1	1

TABLE 5

Laboratory-confirmed *Salmonella* isolates from human sources reported to CDC by serotype, geographic region, and state, 2007

## Region=East North Central

Serotype	States					Total
	Illinois	Indiana	Michigan	Ohio	Wisconsin	
Urbana		2		1	1	4
Virchow		1	2	2	1	6
Vitkin		1				1
Wandsworth	2	2	1		1	6
Weltevreden	1	2	5	1		9
Westhampton		1				1
Worthington		2		1		3
I 4,[5],12:b:-	19					19
I 4,[5],12:b:- var. L(+) tartrate+		24			8	32
I 4,[5],12:e,h:-	1					1
I 4,[5],12:i:-	46	38			121	205
I 6,7:-:1,5	5				3	8
I 6,8:d:-		1				1
I 9,12:l,z28:-	1					1
I 13,22:-:1,6					1	1
II 9,12:z39:1,7	1					1
II 21:z10:[z6]	1					1
II 58:l,z13,z28:z6					4	4
IIIa 18:z4,z23:-		1				1
IIIa 41:z4,z23:-	1				1	2
IIIb 53:z10:z					1	1
IIIb 53:z10:z35		1				1
IIIb 53:z52:z53	1					1
IIIb 60:r:e,n,x,z15		1				1
IIIb 61:c:z35					1	1
IIIb 61:i:z		2				2
IIIb 61:k:1,5,[7]		1				1
IIIb 61:r:z53					1	1
IV 16:z4,z32:-				1		1
IV 40:z4,z32:-		1				1
IV 44:z36,[z38]:-	1					1
IV 45:g,z51:-	1	1				2
IV 48:g,z51:-	4	1		2		7
IV 50:g,z51:-		1				1
Partially serotyped	32		22	9	4	67
Rough, mucoid, and/or nonmotile isolates	5				5	10
Unknown	13	5	97	63		178
<b>Total</b>	<b>1340</b>	<b>685</b>	<b>879</b>	<b>405</b>	<b>846</b>	<b>4155</b>

TABLE 5

Laboratory-confirmed *Salmonella* isolates from human sources reported to CDC by serotype, geographic region, and state, 2007

Region=West North Central

Serotype	States							Total
	Iowa	Kansas	Minnesota	Missouri	Nebraska	North Dakota	South Dakota	
Aarhus		1						1
Aberdeen			1					1
Adelaide			2	1				3
Agbeni	1							1
Agona	6	1	22	13			2	44
Alachua			1	1				2
Altona			1					1
Amager				1				1
Amoutive				1				1
Anatum		4	9	6		1	1	21
Anatum var. 15+						1		1
Apapa				1				1
Arechavaleta		1						1
Baildon			1					1
Bardo		4				1		5
Bareilly	1			14	1			16
Barranquilla		1		1				2
Berta				12				12
Blockley			3	3				6
Bournemouth				1				1
Bovismorbificans	3			2				5
Braenderup	10	7	8	15		1		41
Brandenburg	1	1	2	3				7
Bredeney	1		1	1			1	4
Bronx			1					1
Carmel			1					1
Carrau				1				1
Cerro	1	2	1					4
Choleraesuis			1					1
Coeln			1					1
Concord				1				1
Corvallis	1		3					4
Cotham			1	1				2
Denver			2					2
Derby	3	2	8	5				18
Dublin	1	1	1	1			1	5
Duesseldorf			1					1
Ealing	1			2				3
Eastbourne		1		1				2

TABLE 5

Laboratory-confirmed *Salmonella* isolates from human sources reported to CDC by serotype, geographic region, and state, 2007

## Region=West North Central

Serotype	States							Total
	Iowa	Kansas	Minnesota	Missouri	Nebraska	North Dakota	South Dakota	
Edinburg							1	1
Elomrane	1							1
Enteritidis	78	36	149	137	5	14	30	449
Essen			1	2		1		4
Falkensee			1					1
Fluntern			1					1
Gaminara			3	1	1			5
Give	2			1				3
Give var. 15+							1	1
Hadar	4	5	7	6			3	25
Hartford	4		7	8	1			20
Hato				2				2
Havana	2		1					3
Heidelberg	8	9	22	30	5		5	79
Hull			1					1
Hvittingfoss	1		2					3
Infantis	9	4	14	14		1		42
Irumu			1					1
Javiana	7	5	9	25			1	47
Johannesburg		1	2	3			1	7
Kedougou			1					1
Kentucky	1		4					5
Kiambu	1			2				3
Kingabwa			2					2
Kottbus			2					2
Lagos	1							1
Litchfield	3		3	6			3	15
Livingstone							1	1
London	1			3				4
Luciana			1					1
Madelia				2				2
Manhattan			2	1				3
Mbandaka	3		7	5		1	3	19
Meleagridis			1					1
Menston			1					1
Miami		2	2	3				7
Minnesota			4					4
Mississippi			1	6				7
Mono	30							30

TABLE 5

Laboratory-confirmed *Salmonella* isolates from human sources reported to CDC by serotype, geographic region, and state, 2007

## Region=West North Central

Serotype	States							Total
	Iowa	Kansas	Minnesota	Missouri	Nebraska	North Dakota	South Dakota	
Monschaui			1					1
Montevideo	22	5	44	15	1	7	7	101
Muenchen	12	19	24	47		1	8	111
Muenster	1		2	2				5
Newport	30	34	45	110		10	8	237
Norwich		2	2	10				14
Nottingham							1	1
Ohio	1							1
Oranienburg	5	3	9	10		2	3	32
Orion				1				1
Oskarshamn			1					1
Oslo			2					2
Othmarschen				1				1
Overschie				1				1
Panama	1		4	3			1	9
Paratyphi A	2	2	2	3				9
Paratyphi B	17						1	18
Paratyphi B var. L(+) tartrate+		3	9	9			1	22
Pensacola	2			1				3
Pomona			1					1
Poona		1	3	3		1		8
Potsdam				2				2
Putten		1		1				2
Reading	1	1		1		1		4
Rissen			1					1
Rubislaw				3				3
Saintpaul	9	4	7	12				32
Sandiego		1	5					6
Schwarzengrund	2		7	7		1		17
Senftenberg	2	1	8	2				13
Stanley	1	1	2				3	7
Sundsvall				1				1
Tabligbo		1						1
Teitelkebir	2			2				4
Tennessee	9	13	11	32		4	7	76
Thompson	9	14	5	36		1	1	66
Typhi	1		9	2				12
Typhimurium	60	58	120	207	3	19	39	506
Typhimurium var. 5-	39	19	40	6			7	111



TABLE 5

Laboratory-confirmed *Salmonella* isolates from human sources reported to CDC by serotype, geographic region, and state, 2007

Region=West North Central

Serotype	States							Total
	Iowa	Kansas	Minnesota	Missouri	Nebraska	North Dakota	South Dakota	
Uganda		1	4					5
Virchow	2		1	1				4
Virginia		1						1
Wandsworth			2					2
Weltevreden			2	1				3
Weslaco			1					1
Worthington			1	1				2
Zaiman				1				1
I 3,10:-:1,6			1					1
I 4,[5],12:-:1,7			2					2
I 4,[5],12:b:-			2	2				4
I 4,[5],12:b:- var. L(+) tartrate+			6	4				10
I 4,[5],12:d:-				1				1
I 4,[5],12:e,h:-				2				2
I 4,[5],12:i:-		6	43	99				148
I 6,7:k:-			1	1				2
I 9,12:l,z28:-			1	1				2
I 13,23:b:-				1				1
II 50:b:z6			1					1
IIIa 35:z4,z23:-			1					1
IIIb 48:i:z				2				2
IIIb 50:k:z		1						1
IIIb 50:r:z			1					1
IIIb 61:-:1,5,[7]			1					1
IIIb 61:l,[v],[z13]:1,5,[7]				1				1
IIIb 61:z52:z53		1						1
IIIb 65:(k):z35							1	1
IV 44:z4,z23:-			1					1
IV 48:g,z51:-				1				1
IV 50:z4,z23:-			1					1
Partially serotyped	4	11	3	11	65			94
Rough, mucoid, and/or nonmotile isolates			5	6				11
Unknown	8	5	9		144	13		179
<b>Total</b>	<b>428</b>	<b>297</b>	<b>778</b>	<b>1011</b>	<b>226</b>	<b>81</b>	<b>142</b>	<b>2963</b>

TABLE 5

Laboratory-confirmed *Salmonella* isolates from human sources reported to CDC by serotype, geographic region, and state, 2007

Region=South Atlantic

Serotype	States									Total
	Delaware	District of Columbia	Florida	Georgia	Maryland	North Carolina	South Carolina	Virginia	West Virginia	
Abaetetuba			2							2
Aberdeen			2					1		3
Adelaide				4			4	2		10
Agama				1						1
Agbeni								1		1
Ago			1							1
Agona				12	9	16	5	13		55
Alachua	1			1	1		1	1		5
Albany				1	1			3		5
Anatum			1	8	5	5	4	3		26
Anatum var. 15+								1		1
Anecho						4				4
Apapa			2							2
Aqua							1			1
Baildon			7	1			1			9
Bardo			2	2	12			3		19
Bareilly			2	23	10	28	4	31	1	99
Barranquilla				1				1		2
Bere				4			2			6
Berta			2	12	4	13	8	9	3	51
Blockley					5	1				6
Bonariensis	1									1
Bournemouth					1					1
Bovismorbificans					3	1	1			5
Braenderup			12	34	13	18	13	19	1	110
Brandenburg				1		3	2	1	5	12
Brazil				2						2
Bredeney				1		1				2
Burgas			1							1
Carmel								1		1
Cerro			1		1	1				3
Chester			2	1	1					4
Choleraesuis				3	1					4
Coeln					1		1			2
Colindale								1		1
Concord				1	1			1		3
Corvallis								1		1
Cotham				1						1

TABLE 5

Laboratory-confirmed *Salmonella* isolates from human sources reported to CDC by serotype, geographic region, and state, 2007

## Region=South Atlantic

Serotype	States									Total
	Delaware	District of Columbia	Florida	Georgia	Maryland	North Carolina	South Carolina	Virginia	West Virginia	
Dakar								1		1
Derby			5	7	4	2	5	2		25
Dublin			1		1			2	1	5
Duesseldorf						1				1
Durban				1	1					2
Ealing	1		1					1		3
Eastbourne						2				2
Edinburg				1						1
Enteritidis	25		36	182	226	221	146	293	33	1162
Florida			1	1			1			3
Fresno				1						1
Gaminara			2	3	2	1	9	1	1	19
Gatow						1				1
Give				7		14	4			25
Glostrup			1							1
Guinea				2						2
Haardt								1		1
Hadar	1			6	3	5	4	4		23
Hartford			4	14	9	2	6	15		50
Havana	1		2	2	1	1		2		9
Heidelberg	3		5	42	24	28	32	18	5	157
Herston								1		1
Holcomb									1	1
Hull	1			1						2
Hvittingfoss			1		2	2	2			7
Ibadan						2				2
Infantis	1		2	16	6	15	8	24		72
Inverness			2	8		13	15	1		39
Irumu						1				1
Israel					3					3
Istanbul					1					1
Ituri								1		1
Jaffna								1		1
Javiana	7		62	242	35	162	103	43		654
Johannesburg			3	3		1	1	1		9
Kentucky				2	2	1		1		6
Kiambu				2				2		4
Kingabwa				1						1

TABLE 5

Laboratory-confirmed *Salmonella* isolates from human sources reported to CDC by serotype, geographic region, and state, 2007

## Region=South Atlantic

Serotype	States									Total
	Delaware	District of Columbia	Florida	Georgia	Maryland	North Carolina	South Carolina	Virginia	West Virginia	
Kingston								1		1
Kintambo								1		1
Kokomlemle			3							3
Larochelle	1									1
Lindenburg					1				1	2
Litchfield	2		4	3	8	3	3	4	1	28
Livingstone			1		1					2
Loanda						3				3
Lockleaze					1					1
Lomalinda					1				1	2
London						139		14		153
Madelia				1		3	3			7
Manhattan	1		2	1		1		2		7
Matopeni				1						1
Maumee							1			1
Mbandaka	2			5		3	5	3		18
Meleagridis				1	1		1			3
Meleagridis var. 15+							1			1
Miami			24	12	1	7	4		1	49
Minnesota				4		4	3	1		12
Mississippi			2	20	1	47	50	1		121
Montevideo			5	101	14	13	40	14	6	193
Mountpleasant								1		1
Muenchen	1		16	112	4	42	78	7	1	261
Muenster					1	2	1	1		5
Muenster var. 15+					1					1
Muenster var. 15+, 34+				1						1
Nchanga var. 15+					1					1
Nessziona					1					1
Newport	27		47	269	76	361	148	107	4	1039
Nima			2							2
Nitra	1									1
Norwich			1	7	5	1		3		17
Nottingham			3							3
Nyborg				1						1
Offa				2						2
Ohio					1	1		1		3
Oranienburg	1		4	20	15	43	6	17	2	108

TABLE 5

Laboratory-confirmed *Salmonella* isolates from human sources reported to CDC by serotype, geographic region, and state, 2007

## Region=South Atlantic

Serotype	States									Total
	Delaware	District of Columbia	Florida	Georgia	Maryland	North Carolina	South Carolina	Virginia	West Virginia	
Orion var. 15+				1						1
Oslo				1						1
Othmarschen			8						1	9
Overschie								1		1
Pakistan					1					1
Panama	1		15	5	5			9	2	37
Paratyphi A	3		1	8	3	5		13		33
Paratyphi B			2		2			1	2	7
Paratyphi B var. L(+) tartrate+	2		3	18	14	22	3	2	1	65
Pensacola						2				2
Pomona			3		2		3	1		9
Poona	1		3	9	7	4	2	10	2	38
Potsdam					1					1
Praha					1					1
Putten				1						1
Reading	1		3	1	2	3				10
Richmond			1		3					4
Rissen				1				1		2
Rubislaw			10	23		5	10			48
Saintpaul	3		14	52	15	5	27	23		139
Sandiego			7	9	6	12	7	10	1	52
Schwarzengrund	2			3	3	5	18	8		39
Senftenberg				4				2	1	7
Singapore								1		1
Stanley	3		1	7	15	6	3		1	36
Stanleyville					1			1		2
Suelldorf					2					2
Tallahassee			2	1					1	4
Telelkebir			1	1	3			2	1	8
Tennessee	3		7	24	13	23	12	36	5	123
Thompson	4		5	10		1	1	10		31
Typhi	2	9	14	17	22	7	4	31	1	107
Typhimurium	19		26	157	92	395	133	291	21	1134
Typhimurium var. 5-			8	105	52					165
Uganda				1	3			1		5
Urbana			5	2			6	2	2	17
Valdosta				3						3
Vancouver									1	1

TABLE 5

Laboratory-confirmed *Salmonella* isolates from human sources reported to CDC by serotype, geographic region, and state, 2007

## Region=South Atlantic

Serotype	States									Total
	Delaware	District of Columbia	Florida	Georgia	Maryland	North Carolina	South Carolina	Virginia	West Virginia	
Virchow	1			1	3		2	6		13
Virginia				1				1		2
Wandsworth				1	2			1		4
Weltevreden			6	1	1	1		3		12
Wien								1		1
Worthington				1						1
I 4,[5],12:-:1,2				2						2
I 4,[5],12:b:-				8			1	5		14
I 4,[5],12:b:- var. L(+) tartrate+				2				18		20
I 4,[5],12:d:-								2		2
I 4,[5],12:i:-	10		8	61	46			66	4	195
I 6,14,25:b:-				1						1
I 6,7:-:1,5	1		1	1				1		4
I 6,7:k:-	1				1					2
I 6,8:-:1,5					1					1
I 6,8:d:-				2						2
I 6,8:e,h:-					2					2
I 8,20:i:-					1					1
I 8:e,h:-					1					1
I 9,12:-:1,5					3					3
I 9,12:l,z28:-				3			1			4
I 13,23:b:-				77	2			1		80
II 16:z4,z23:-							1			1
II 58:c:z6					1					1
IIIa 48:g,z51:-	1		1	1				2		5
IIIa 48:z4,z24:-				1						1
IIIa 50:z4,z23:-			2							2
IIIb 48:r:e,n,x,z15				1						1
IV 16:z4,z32:-				2						2
IV 40:z4,z24:-			2							2
IV 44:z4,z23:-			1		2					3
IV 45:g,z51:-			1	1	1					3
IV 48:g,z51:-			3	4	1			1		9
IV 48:z4,z32:-			15							15
IV 50:z4,z23:-			78	2						80
Partially serotyped	1	86	81	28	8	5	12	20		241
Rough, mucoid, and/or nonmotile isolates				7	6		3	2	1	19

TABLE 5

Laboratory-confirmed *Salmonella* isolates from human sources reported to CDC by serotype, geographic region, and state, 2007

**Region=South Atlantic**

Serotype	States									Total
	Delaware	District of Columbia	Florida	Georgia	Maryland	North Carolina	South Carolina	Virginia	West Virginia	
Unknown	7	20	285	155	5	99	30	3	3	607
<b>Total</b>	<b>144</b>	<b>115</b>	<b>902</b>	<b>2047</b>	<b>878</b>	<b>1839</b>	<b>1006</b>	<b>1275</b>	<b>119</b>	<b>8325</b>

TABLE 5

Laboratory-confirmed *Salmonella* isolates from human sources reported to CDC by serotype, geographic region, and state, 2007

Region=East South Central

Serotype	States				Total
	Alabama	Kentucky	Mississippi	Tennessee	
Aberdeen			1		1
Adelaide	1				1
Agona	5	6		4	15
Alachua	2				2
Albany	2				2
Altona			1		1
Amager	1				1
Anatum	2	3	1	3	9
Bareilly	23	15	2	26	66
Berta		9		2	11
Blockley		1			1
Bovismorbificans	1	3			4
Braenderup	28	4	6	11	49
Brandenburg	3			3	6
Brazil	1				1
Bredeney		1		1	2
Cerro		1			1
Chingola				1	1
Choleraesuis				1	1
Colindale		1			1
Cotham	2				2
Derby	4	1	1	2	8
Djugu		2			2
Dublin		1			1
Durban	1				1
Ealing		1			1
Eastbourne	1				1
Edinburg	1				1
Entebbe	1				1
Enteritidis	98	97	19	78	292
Escanaba			1		1
Florida	1				1
Gaminara	7	1	6	1	15
Give	12		8		20
Give var. 15+			2		2
Hadar	4	5		8	17
Haifa				2	2
Hartford	27	6	2	6	41
Havana	3		1	1	5
Heidelberg	31	27	15	42	115



TABLE 5

Laboratory-confirmed *Salmonella* isolates from human sources reported to CDC by serotype, geographic region, and state, 2007

## Region=East South Central

Serotype	States				Total
	Alabama	Kentucky	Mississippi	Tennessee	
Hvittingfoss				2	2
Idikan		1			1
Infantis	8	10	2	4	24
Inverness	12		5		17
Jangwani		1			1
Javiana	103	19	75	23	220
Joal	1				1
Kentucky		2		1	3
Kiambu	1	1		1	3
Kingabwa	1				1
Kintambo	1				1
Larochelle	1		1		2
Litchfield	13	6	3	4	26
Lomalinda	1				1
London	1			2	3
Luciana	1		2		3
Macallen	1				1
Manhattan		3			3
Mbandaka	16	12	1	8	37
Meleagridis		1			1
Mgulani	1				1
Miami	5			2	7
Mikawasima	1				1
Minnesota		1		1	2
Mississippi	79	1	120	13	213
Montevideo	61	7	11	8	87
Muenchen	103	6	26	11	146
Muenster	2	4		1	7
Newport	156	62	121	82	421
Nigeria			1		1
Nima		1			1
Norwich	3	6	6	11	26
Nyanza				1	1
Ohio		5			5
Ohio var. 14+				2	2
Oldenburg			1		1
Oranienburg	16	11	3	9	39
Oranienburg var. 14+		1			1
Othmarschen			3		3
Panama		1	1	1	3

TABLE 5

Laboratory-confirmed *Salmonella* isolates from human sources reported to CDC by serotype, geographic region, and state, 2007

Region=East South Central

Serotype	States				Total
	Alabama	Kentucky	Mississippi	Tennessee	
Paratyphi A	1				1
Paratyphi B	2		1	12	15
Paratyphi B var. L(+) tartrate+	3	17	16	3	39
Pensacola	3				3
Pomona	4		1	2	7
Poona	9	8		1	18
Potsdam				1	1
Putten	1				1
Rubislaw	8		12		20
Saintpaul	15	8	2	10	35
Sandiego	3			4	7
Schleissheim		1			1
Schwarzengrund	1	2		1	4
Senftenberg	1			4	5
Stanley	1	3	2	4	10
Teitelkebir				1	1
Tennessee	31	21	6	17	75
Thompson	7	11		8	26
Typhi	4			1	5
Typhimurium	198	92	67	115	472
Typhimurium var. 5-		30	22		52
Uganda				2	2
Urbana	1	2		3	6
Virchow				1	1
Wandsworth				1	1
Weltevreden	1				1
Worthington		1			1
I 4,[5],12:b:-	1				1
I 4,[5],12:i:-	28	7	16	56	107
I 6,7:e,h:-			1		1
I 6,8:d:-	1				1
I 9,12:l,z28:-			2		2
I 13,23:-:1,5			1		1
IIIb 48:i:z				1	1
IIIb 61:-:1,5,[7]				1	1
IIIb 61:z52:z53				1	1
IV 44:z4,z23:-		1			1
IV 45:g,z51:-				1	1
IV 50:g,z51:-				1	1
IV 50:z4,z23:-	1			1	2

TABLE 5

Laboratory-confirmed *Salmonella* isolates from human sources reported to CDC by serotype, geographic region, and state, 2007

**Region=East South Central**

Serotype	States				Total
	Alabama	Kentucky	Mississippi	Tennessee	
Partially serotyped		25	18	1	44
Rough, mucoid, and/or nonmotile isolates			2	1	3
Unknown	82	22	15	36	155
<b>Total</b>	<b>1257</b>	<b>598</b>	<b>632</b>	<b>670</b>	<b>3157</b>

TABLE 5

Laboratory-confirmed *Salmonella* isolates from human sources reported to CDC by serotype, geographic region, and state, 2007

Region=West South Central

Serotype	States				Total
	Arkansas	Louisiana	Oklahoma	Texas	
Adelaide				1	1
Agona	3	8	5	3	19
Amager			1		1
Anatum		4	1	3	8
Arechavaleta			9		9
Bareilly	16	10	5	1	32
Berta	4		8	1	13
Braenderup	5	37	22	13	77
Brandenburg	2			1	3
Breukelen			1		1
Cerro			2		2
Chester			2		2
Choleraesuis				2	2
Cubana		2			2
Derby	1		2		3
Ealing	3		4	1	8
Enteritidis	60	19	45	70	194
Gaminara	1	10			11
Georgia	1		1		2
Give	1	8	1	1	11
Grumpensis			1		1
Hadar	6		2		8
Hartford	2		5		7
Heidelberg	20	8	23	10	61
Hvittingfoss		2	1		3
Infantis	2	28	23	33	86
Israel				1	1
Javiana	81	29	13	25	148
Johannesburg	2				2
Kentucky	3				3
Kiambu	3		7		10
Kottbus	1				1
Litchfield	2		19	1	22
Luciana		2			2
Manhattan			1	1	2
Mbandaka	8	2			10
Miami	1			1	2
Minnesota				1	1
Mississippi	15	44	5	27	91
Montevideo	6	44	14	14	78

TABLE 5

Laboratory-confirmed *Salmonella* isolates from human sources reported to CDC by serotype, geographic region, and state, 2007

Region=West South Central

Serotype	States				Total
	Arkansas	Louisiana	Oklahoma	Texas	
Muenchen	5	18	15	3	41
Newport	190	69	206	70	535
Norwich	20		19	3	42
Oranienburg	2	10	14	9	35
Panama	2		1	4	7
Paratyphi A		4	3	5	12
Paratyphi B	1			9	10
Paratyphi B var. L(+) tartrate+			48		48
Pensacola		2			2
Pomona				1	1
Poona	1		2	3	6
Reading			1	1	2
Rubislaw	16	8	6	11	41
Saintpaul	2		12	8	22
Sandiego				2	2
Schwarzengrund				1	1
Senftenberg			7	3	10
Stanley	2		1	2	5
Takoradi			1		1
Tennessee	5	5	21	9	40
Thompson	8	9	9	1	27
Typhi			4	4	8
Typhimurium	163	54	107	43	367
Uganda			4		4
Uppsala			4		4
Urbana		8	3		11
Virchow	1				1
Worthington			1		1
I 4,[5],12:b:-		2			2
I 4,[5],12:i:-		22		2	24
II 47:b:1,5				1	1
IV 11:z4,z23:-		2			2
Partially serotyped	3	2	33	265	303
Rough, mucoid, and/or nonmotile isolates			2		2
Unknown	46	18		2321	2385
<b>Total</b>	<b>716</b>	<b>490</b>	<b>747</b>	<b>2992</b>	<b>4945</b>

TABLE 5

Laboratory-confirmed *Salmonella* isolates from human sources reported to CDC by serotype, geographic region, and state, 2007

Region=Mountain

Serotype	States								Total
	Arizona	Colorado	Idaho	Montana	Nevada	New Mexico	Utah	Wyoming	
Aberdeen		1							1
Abony	1								1
Adelaide		1							1
Agbeni	1								1
Agona	47	10	1		8	4	11		81
Agouve	1								1
Alachua	1								1
Albany	3	1			1	1	2		8
Amsterdam		1				1			2
Anatum	10	3	1		3	3	4		24
Anatum var. 15+		1							1
Apapa	1								1
Bareilly	1	1							2
Berta	3	3			1				7
Blockley	1								1
Bovismorbificans		2	2						4
Braenderup	9	13	1		3	3	7		36
Brandenburg	5	1							6
Bredeney					2	3			5
Budapest			1						1
Carmel		1							1
Cerro		1				1	2		4
Cerro var. 14+		1							1
Chester	1								1
Chicago							1		1
Choleraesuis var. Kunzendorf					4				4
Concord		2							2
Cotham					2				2
Cubana	1				3				4
Denver						1			1
Derby	2	2							4
Dublin	10	1	2		3	1	5		22
Durban							2		2
Ealing	1						1		2
Eastbourne	1								1
Edinburg	1								1
Enteritidis	97	113	22		65	21	67	3	388
Florida							1		1
Gallinarum		1							1

TABLE 5

Laboratory-confirmed *Salmonella* isolates from human sources reported to CDC by serotype, geographic region, and state, 2007

## Region=Mountain

Serotype	States								Total
	Arizona	Colorado	Idaho	Montana	Nevada	New Mexico	Utah	Wyoming	
Gaminara	5	3			1		1		10
Give	8	1				2			11
Give var. 15+		2							2
Glasgow							2		2
Goettingen	2	1							3
Hadar	3	3	3		5	1	8		23
Haifa			1						1
Hartford	1	1			1				3
Havana	3	1				1			5
Heidelberg	70	33	8		20	6	15		152
Hull	1								1
Hvittingfoss	1	4					4		9
Idikan	1								1
Infantis	14	11	1		1	5	4	1	37
Javiana	20	13	3		3	32	5		76
Johannesburg	1								1
Kentucky	1	5	1			2			9
Kiambu		1							1
Kintambo	1								1
Kottbus		1							1
Lansing					1				1
Lexington					1				1
Litchfield	2	1					3		6
Lomalinda	1								1
London	1								1
Luciana				1			2		3
Manhattan		1							1
Mbandaka	5	3	1				1		10
Meleagridis	4						1		5
Miami					2		1		3
Michigan	1	2							3
Minnesota	4						2		6
Mississippi	1	1					4		6
Molade	1								1
Monschau		1							1
Montevideo	56	41	6		6	9	22		140
Muenchen	27	13			2	15	3		60
Muenster	2	2			2		2		8
Newmexico	1								1

TABLE 5

Laboratory-confirmed *Salmonella* isolates from human sources reported to CDC by serotype, geographic region, and state, 2007

## Region=Mountain

Serotype	States								Total
	Arizona	Colorado	Idaho	Montana	Nevada	New Mexico	Utah	Wyoming	
Newport	114	57	8		13	38	33	2	265
Norwich	1					2			3
Ohio					1		1		2
Oranienburg	91	15			9	13	6		134
Othmarschen	1								1
Panama	34	1	1		1	1			38
Paratyphi A	1	2					1		4
Paratyphi B	2				1	7			10
Paratyphi B var. L(+) tartrate+	1	15	3		6	1	11		37
Paratyphi C	1								1
Poano		1							1
Pomona	1		2		3	1			7
Poona	57	4	1		6	3	3		74
Reading		1			1		1		3
Remo	1								1
Ridge		1							1
Rubislaw	2		1						3
Saintpaul	11	5	2		6	5	6		35
Sandiego	12	4	2			4	1		23
Senftenberg	3	2	1		3	3	1		13
Soerenga	2								2
Stanley	1	2	2		1	1	4		11
Sundsvall	1					1			2
Teitelkebir	4	1			1				6
Tennessee	4	30	2		6	4	1		47
Thompson	5	6	1		6	2	4		24
Typhi	9	7	1		1		3		21
Typhimurium	118	47	19		26	27	63	8	308
Typhimurium var. 5-	25	113	14		5	13	8		178
Uganda	9								9
Urbana	1	1					3		5
Virchow		4							4
Wandsworth		5							5
Weltevreden			1		1		1		3
Weltevreden var. 15+							1		1
Widemarsh							1		1
I 4,[5],12:b:-	3	3							6
I 4,[5],12:b:- var. L(+) tartrate+	3						3		6
I 4,[5],12:i:-	38	18	6		26	11	4		103



TABLE 5

Laboratory-confirmed *Salmonella* isolates from human sources reported to CDC by serotype, geographic region, and state, 2007

## Region=Mountain

Serotype	States								Total
	Arizona	Colorado	Idaho	Montana	Nevada	New Mexico	Utah	Wyoming	
I 6,7:-:1,5		2							2
I 9,12:l,z28:-	3								3
II 21:z10:[z6]	1								1
II 47:b:1,5		1					2		3
II 47:b:e,n,x,z15	1								1
II 48:a:z6	1								1
II 50:b:z6							1		1
IIIa 35:z4,z32:-	1								1
IIIa 41:z4,z23:-	2	1							3
IIIa 42:g,z51:-	1								1
IIIa 42:z4,z23:-	1								1
IIIa 48:z29:-	1								1
IIIa 48:z4,z24:-		1							1
IIIb 48:i:z	2				1				3
IIIb 61:l,[v],[z13]:1,5,[7]		2							2
IV 48:g,z51:-	1						2		3
IV 48:z4,z24:-					1				1
Partially serotyped	24	1	1	119	1	16	1	9	172
Rough, mucoid, and/or nonmotile isolates	6	3	1		5	5	1		21
Unknown	3	35		3		3	2	39	85
<b>Total</b>	<b>1040</b>	<b>696</b>	<b>123</b>	<b>123</b>	<b>271</b>	<b>273</b>	<b>352</b>	<b>62</b>	<b>2940</b>

TABLE 5

Laboratory-confirmed *Salmonella* isolates from human sources reported to CDC by serotype, geographic region, and state, 2007

Region=Pacific

Serotype	States					Total
	Alaska	California	Hawaii	Oregon	Washington	
Abaetetuba		1				1
Aberdeen		2	1			3
Abony		1				1
Adelaide		18	1	2		21
Agbeni				1		1
Ago		2				2
Agona	2	156	5	6	14	183
Agoueve		1				1
Alachua		4				4
Albany		11	1			12
Altona			3			3
Amager		1				1
Amoutive				1		1
Anatum		31	2		3	36
Anatum var. 15+		4				4
Anecho	2	1				3
Anfo		1				1
Apapa		5				5
Arechavaleta		1				1
Baildon		1				1
Ball					1	1
Bardo		8				8
Bareilly		11			1	12
Beaudesert		1			1	2
Bere		1				1
Berta	1	13				14
Birkenhead			1			1
Blockley		28		1		29
Bonariensis		1				1
Bovismorbificans	1	7		2		10
Braenderup	1	74	3	9	13	100
Brandenburg		18			4	22
Bukavu		1				1
Cerro		5				5
Cerro var. 14+		3				3
Chester		5			1	6
Chicago					1	1
Choleraesuis		1		1	1	3
Choleraesuis var. Kunzendorf		2				2
Clackamas				1	1	2

TABLE 5

Laboratory-confirmed *Salmonella* isolates from human sources reported to CDC by serotype, geographic region, and state, 2007

Region=Pacific

Serotype	States					Total
	Alaska	California	Hawaii	Oregon	Washington	
Coeln		1				1
Colindale				1		1
Concord	1			1		2
Corvallis		3	7		1	11
Cotham		3		2		5
Cubana		6		1	1	8
Derby	1	21	11			33
Dublin		25		1	7	33
Duesseldorf					1	1
Duisburg		2				2
Durban		4			1	5
Ealing		3				3
Eastbourne		4		1		5
Emek		5				5
Entebbe		5				5
Enteritidis	15	871	41	52	117	1096
Florida					1	1
Fluntern		2				2
Gaminara		5	3			8
Georgia		1				1
Give		5	10			15
Glostrup		2				2
Guildford					1	1
Guinea		1				1
Haardt		4				4
Hadar		38	5	3	7	53
Haifa		1				1
Hartford	1	3				4
Havana		5			1	6
Heidelberg	3	311	8	27	40	389
Hull		1				1
Hvittingfoss	1	6	1	1	1	10
Indiana		5				5
Infantis		94	11	5	8	118
Inverness		1				1
Irumu		1				1
Isangi		1				1
Istanbul		1				1
Jangwani		2			1	3
Javiana	1	35	1	1	13	51

TABLE 5

Laboratory-confirmed *Salmonella* isolates from human sources reported to CDC by serotype, geographic region, and state, 2007

Region=Pacific

Serotype	States					Total
	Alaska	California	Hawaii	Oregon	Washington	
Johannesburg		8				8
Kentucky		15	1		1	17
Kiambu		3			1	4
Kingabwa		2				2
Kintambo		3				3
Kisarawe		2			1	3
Kottbus		4			1	5
Lexington		1			1	2
Lille		1				1
Litchfield		39		1	1	41
Liverpool		1				1
Livingstone		3	1			4
Lomalinda		4				4
London	1	4				5
Madelia				1		1
Manhattan		16			3	19
Matadi		1				1
Mbandaka	1	69		6	2	78
Meleagridis		6		1	2	9
Miami		4		2		6
Michigan		4				4
Minnesota		2		1	1	4
Mississippi	1	2		1		4
Monschau				1		1
Montevideo	5	141	10	13	32	201
Muenchen	1	96	25	10	11	143
Muenster		12		1	1	14
Napoli		1				1
Newport	5	337	14	18	59	433
Nima		3		1		4
Oakland		1				1
Ohio		10	4		1	15
Ohio var. 14+		2				2
Oranienburg		100	3	8	12	123
Orion		1				1
Oslo		2	5		1	8
Pakistan		2				2
Panama	1	26		4	2	33
Paratyphi A		46	1	1	3	51
Paratyphi B			37		2	39

TABLE 5

Laboratory-confirmed *Salmonella* isolates from human sources reported to CDC by serotype, geographic region, and state, 2007

Region=Pacific

Serotype	States					Total
	Alaska	California	Hawaii	Oregon	Washington	
Paratyphi B var. L(+) tartrate+		62	1	11	18	92
Plymouth		1				1
Poano					1	1
Pomona		12				12
Poona	1	23		2	3	29
Potsdam		4		2	1	7
Reading		17			1	18
Richmond			1		1	2
Rissen		5				5
Romanby		1				1
Roodepoort		1				1
Rubislaw		3				3
Saintpaul	1	74	5	4	32	116
Sandiego		25		5	6	36
Saphra				1		1
Schwarzengrund		12		1	1	14
Senftenberg		44	8		23	75
Singapore		3			2	5
Soerenga		1				1
Stanley	3	76	2	5	9	95
Stanleyville		1				1
Telekebir		23			2	25
Tennessee		13		3	6	22
Thompson		32	3	6	6	47
Tucson		1				1
Typhi	1	98	10	4	7	120
Typhimurium	25	492	52	58	137	764
Typhimurium var. 5-		179				179
Uganda		17	1		1	19
Uganda var. 15+		1				1
Urbana		8				8
Vancouver			1			1
Virchow		11	1	2	1	15
Virginia			1			1
Wandsworth		6		2	5	13
Wangata		1				1
Weltevreden	2	9	28	1	1	41
Weltevreden var. 15+			3			3
Westhampton			3		3	6
Widemarsh		1				1

TABLE 5

Laboratory-confirmed *Salmonella* isolates from human sources reported to CDC by serotype, geographic region, and state, 2007

## Region=Pacific

Serotype	States					Total
	Alaska	California	Hawaii	Oregon	Washington	
Worthington		3			2	5
I 3,10:l,v:-		2				2
I 4,[5],12:-:1,2		1				1
I 4,[5],12:b:-		8				8
I 4,[5],12:b:- var. L(+) tartrate+		31		5		36
I 4,[5],12:i:-	10	156	12	33	30	241
I 6,7:-:1,5		6	2	1		9
I 6,7:c:-		1				1
I 6,7:k:-		1				1
I 6,7:r:-		1				1
I 6,8:-:1,2		2				2
I 6,8:-:1,5		1				1
I 6,8:d:-		5				5
I 9,12:-:1,5		1				1
I 9,12:l,z28:-		1				1
I 13,23:-:1,5		1				1
I 16:l,v:-		2				2
I 47:z4,z23:-		2				2
II 21:g,[m],[s],t:-		1				1
II 47:b:e,n,x,z15		1				1
II 47:b:z6		1				1
II 58:l,z13,z28:z6		3				3
IIIa 13,22:z4,z23:-		1				1
IIIa 18:z4,z23:-		5			1	6
IIIa 35:z4,z32:-		1				1
IIIa 41:z4,z23:-		6			2	8
IIIa 48:g,z51:-		3				3
IIIa 48:z4,z24:-		1				1
IIIa 50:z4,z23:-		1				1
IIIa 51:g,z51:-		1				1
IIIa 56:z4,z23:-		5				5
IIIb 16:z10:e,n,x,z15		2				2
IIIb 38:(k):z35		1				1
IIIb 47:k:z35		2				2
IIIb 47:z10:z35				1		1
IIIb 48:i:z		2				2
IIIb 48:z52:z		1				1
IIIb 50:k:z53		1				1
IIIb 50:r:z		1				1
IIIb 50:z52:z35		1				1

TABLE 5

Laboratory-confirmed *Salmonella* isolates from human sources reported to CDC by serotype, geographic region, and state, 2007

Region=Pacific

Serotype	States					Total
	Alaska	California	Hawaii	Oregon	Washington	
IIIb 60:r:e,n,x,z15				1		1
IIIb 61:-:1,5,[7]		4				4
IIIb 61:c:z35					1	1
IIIb 61:l,[v],[z13]:1,5,[7]		10				10
IIIb 65:(k):z53		1				1
IV 16:z4,z32:-		2				2
IV 44:z4,z23:-		2		1		3
IV 45:g,z51:-		5				5
IV 48:g,z51:-		3		1	2	6
IV 50:g,z51:-		3		1		4
IV 50:z4,z23:-		3			2	5
IV 50:z4,z32:-					1	1
Partially serotyped	1	6	7	2	23	39
Rough, mucoid, and/or nonmotile isolates		18		3		21
Unknown		43		2	2	47
<b>Total</b>	<b>89</b>	<b>4495</b>	<b>357</b>	<b>348</b>	<b>713</b>	<b>6002</b>

FIGURE 2

Isolation rates of laboratory-confirmed *Salmonella* serotype Enteritidis from human sources reported to CDC per 100,000 population by region: 1970 - 2007

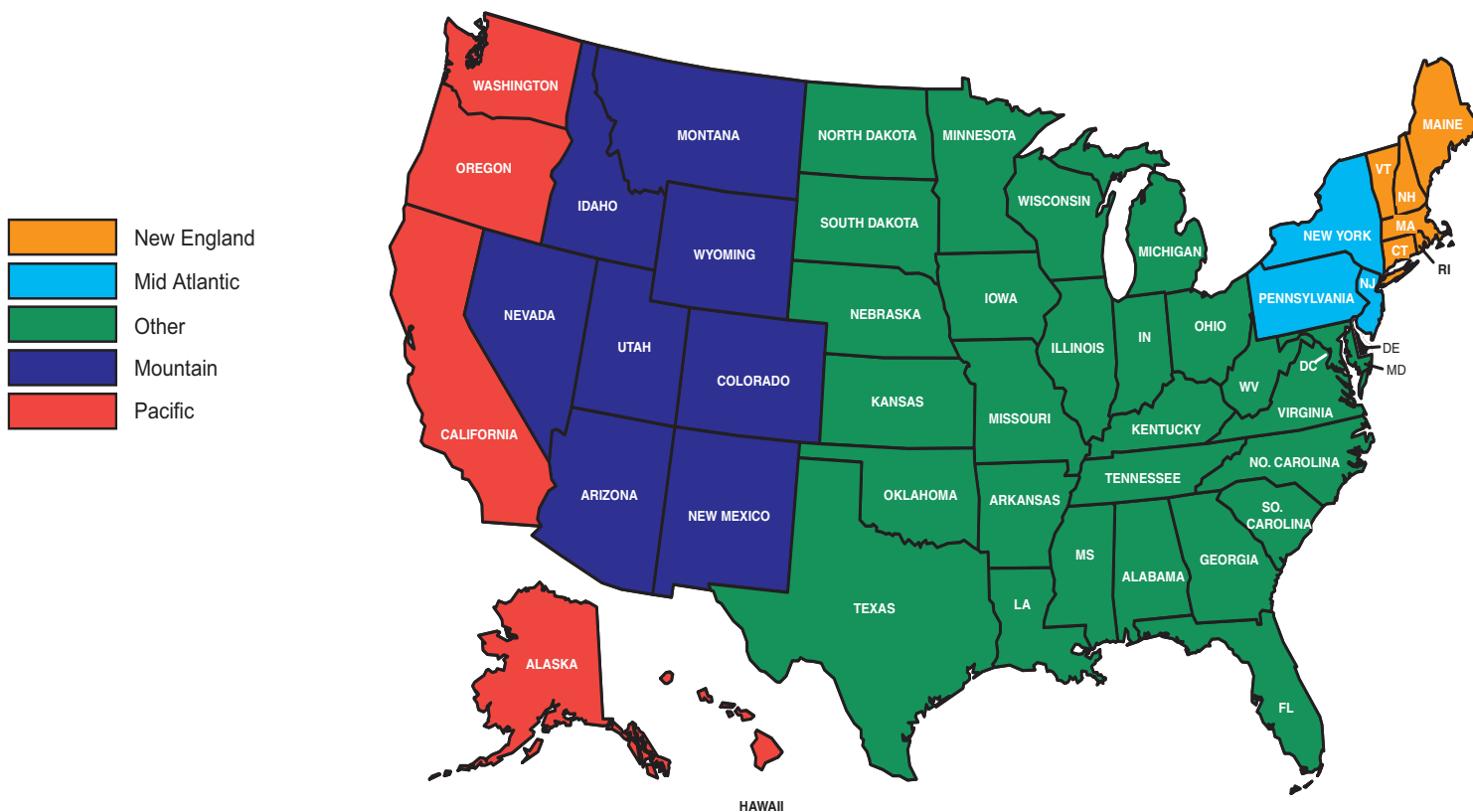
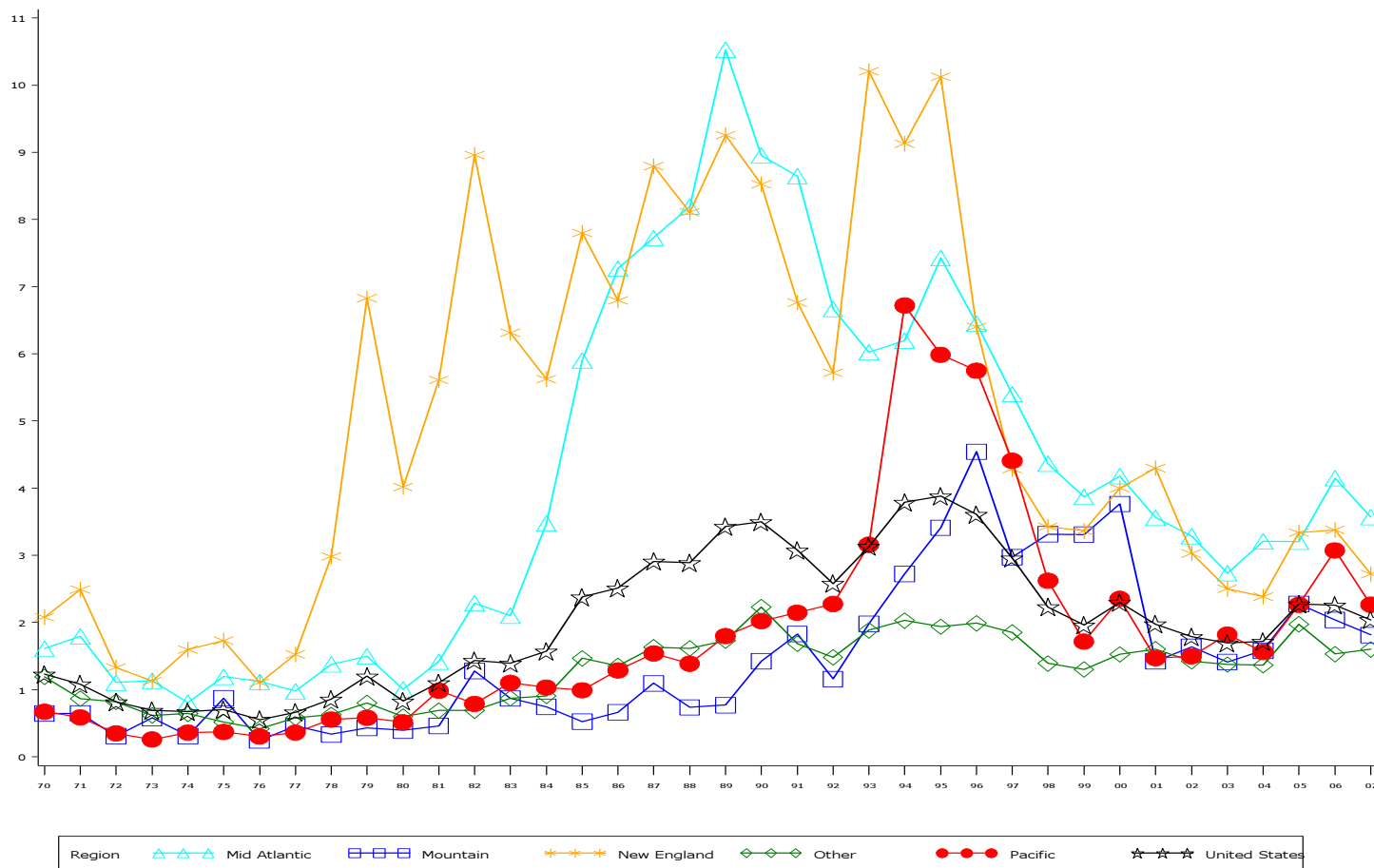




FIGURE 3

Isolation rates of the top 4 laboratory-confirmed *Salmonella* serotypes from human sources reported to CDC per 100,000 population: 1970 - 2007

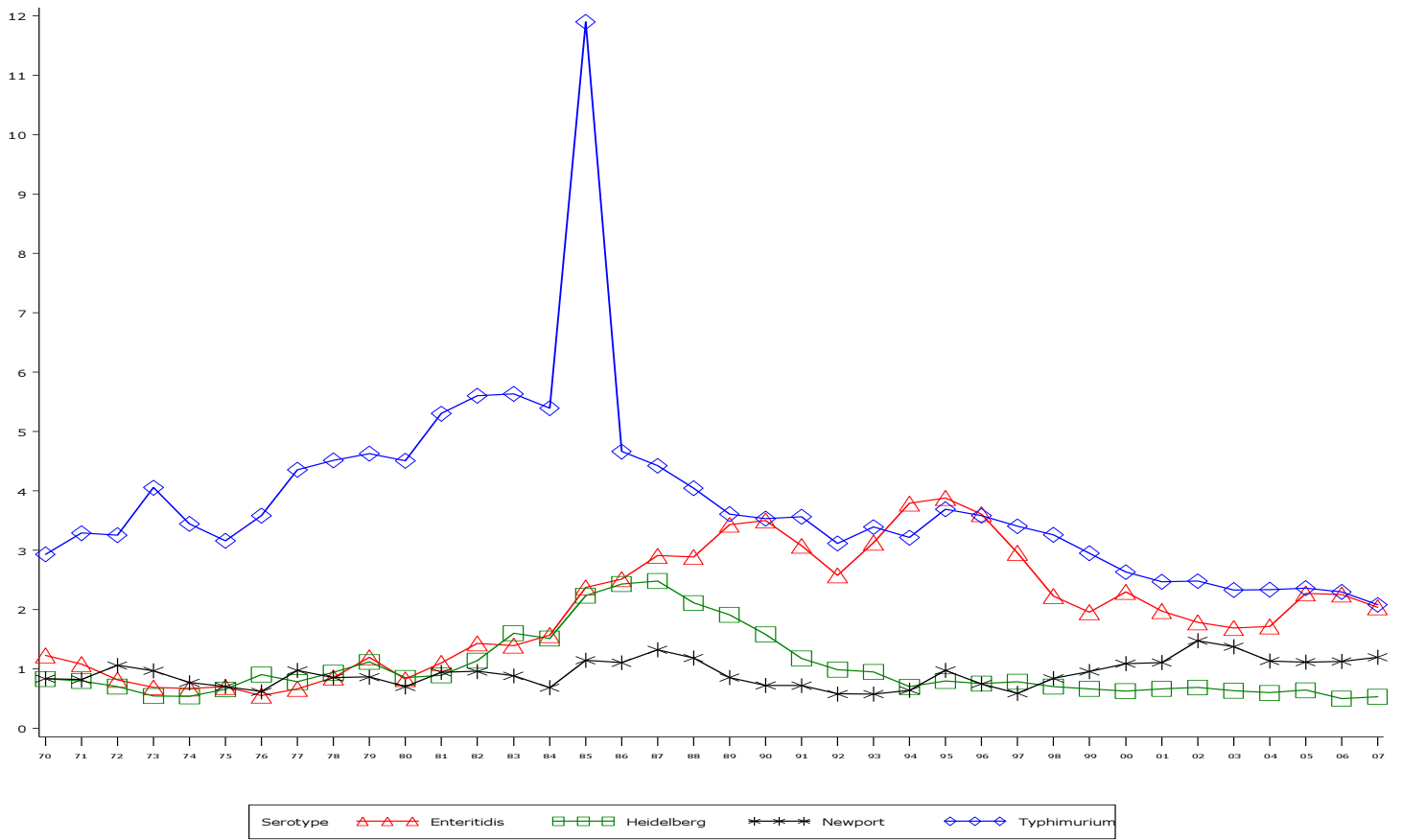


TABLE 6

Laboratory-confirmed *Salmonella* isolates from clinical and non-clinical nonhuman sources reported to the National Veterinary Services Laboratories, with the 20 most frequently reported serotypes listed individually, 2007

Clinical Nonhuman 2007				Non-Clinical Nonhuman 2007			
Rank	Serotype	Reported	Percent	Rank	Serotype	Reported	Percent
1	Typhimurium *	1582	22.2	1	Kentucky	1677	14.6
2	Dublin	525	7.4	2	Heidelberg	1078	9.4
3	Newport	460	6.4	3	Typhimurium *	1032	9.0
4	Agona	316	4.4	4	Montevideo	650	5.7
5	Derby	311	4.4	5	Enteritidis	602	5.2
6	Montevideo	278	3.9	6	Senftenberg	532	4.6
7	Senftenberg	263	3.7	7	Cerro	476	4.1
8	Muenster	260	3.6	8	Anatum	442	3.8
9	Heidelberg	241	3.4	9	Hadar	406	3.5
10	Cerro	226	3.2	10	Mbandaka	389	3.4
11	Anatum	185	2.6	11	Newport	294	2.6
12	Kentucky	178	2.5	12	London	243	2.1
13	Enteritidis	134	1.9	13	Muenster	224	1.9
14	Choleraesuis **	128	1.8	14	Derby	215	1.9
15	Infantis	128	1.8	15	Agona	211	1.8
16	I 4,[5],12:i:-	127	1.8	16	Orion var. 15+,34+	189	1.6
17	Oranienburg	112	1.6	17	Schwarzengrund	189	1.6
18	Mbandaka	111	1.6	18	I 4,[5],12:i:-	187	1.6
19	Meleagridis	98	1.4	19	Saintpaul	182	1.6
20	Ohio	69	1.0	20	Meleagridis	179	1.6
	<b>Sub Total</b>	<b>5732</b>	<b>80.3</b>		<b>Sub Total</b>	<b>9397</b>	<b>81.7</b>
	All other serotyped	1309	18.3		All other serotyped	2061	17.9
	Rough, mucoid, and/or nonmotile isolates	93	1.3		Rough, mucoid, and/or nonmotile isolates	41	0.4
	<b>Sub Total</b>	<b>1402</b>	<b>19.7</b>		<b>Sub Total</b>	<b>2102</b>	<b>18.3</b>
	<b>Total</b>	<b>7134</b>	<b>100</b>		<b>Total</b>	<b>11499</b>	<b>100</b>
Note: ----- * Typhimurium includes var. 5- (formerly var. Copenhagen) ** Choleraesuis includes var. Decatur and Kunzendorf				Note: ----- * Typhimurium includes var. 5- (formerly var. Copenhagen)			

TABLE 7

Laboratory-confirmed *Salmonella* isolates from clinical nonhuman sources reported to the National Veterinary Services Laboratories by serotype and source, 2007

Serotype	All Others	Bovine	Chicken	Equine	Other birds / Wild animals	Other Domestic Animals /Environment	Porcine	Reptile	Turkey	Total
Adelaide					1		4		1	6
Agona		83		36	5	5	168		19	316
Alachua		3		1		1	1		1	7
Albany					1		2	1	5	9
Altona		3		1	1		1			6
Amsterdam		1								1
Anatum	2	73		38	3	2	61		6	185
Anatum var. 15+		11		2			1	1	1	16
Anatum var. 15+,34+		7		4			2			13
Aqua								1		1
Arechavaleta						1				1
Assen		1								1
Banana							1			1
Bardo								1		1
Bareilly		1		9		1				11
Barranquilla	1	2				2				5
Be								1		1
Bere		1					1		1	3
Berta		1	1	1					2	5
Binningen								2		2
Blijdorp								1		1
Blockley				1						1
Blukwa								1		1
Bovismorbificans		13		5	1		3			22
Braenderup		4	2	23	1	2	6	3		41
Brandenburg		4				1	13		2	20
Bredeney		5	1		4		5		15	30
Cannstatt				2						2
Cerro	2	207	1	9	2	1	3		1	226
Choleraesuis var. Kunzendorf						1	127			128
Cubana		2		1	2				3	8
Daytona					2					2
Derby	1	13	1	3	1	1	291			311
Dublin	3	504		1	1	6	10			525
Dunkwa				1						1
Eastbourne								1		1
Enteritidis	14	8	46	10	44	5	5		2	134

TABLE 7

Laboratory-confirmed *Salmonella* isolates from clinical nonhuman sources reported to the National Veterinary Services Laboratories by serotype and source, 2007

Serotype	All Others	Bovine	Chicken	Equine	Other birds / Wild animals	Other Domestic Animals /Environment	Porcine	Reptile	Turkey	Total
Fresno								1		1
Gaminara				2	2			1		5
Give		20		1	6		5			32
Give var. 15+		10		1	1					12
Give var. 15+,34+		15			1					16
Hadar		2	3		3	1	4		29	42
Hartford				12	1	1	1			15
Havana		14	1	7	4	1	18			45
Heidelberg	7	11	13	5	37	2	159		7	241
Holcomb		2		4						6
Idikan		5								5
Indiana			3				1			4
Infantis	2	27	6	6	3		82		2	128
Inverness				4						4
Irumu				1						1
Javiana		1		44	1	4	3	1		54
Jerusalem							2			2
Johannesburg	1	3			2	2	53			61
Kentucky	2	124	27	4	18	2			1	178
Kiambu		1	1	6	1					9
Kisarawe								2		2
Krefeld							4			4
Lexington						1				1
Lille								1		1
Litchfield		5		5		2	7			19
Liverpool		1	1	2	1		1			6
Livingstone						1	4			5
London	1	18					12			31
Manhattan		1		3	1		3	1		9
Mbandaka	2	49		12	5	9	33		1	111
Meleagridis	10	81	1	3	1		2			98
Miami		1		2		1				4
Minnesota		8		2	2		1			13
Mississippi				4		1				5
Montevideo	17	184	14	9	17	9	6	6	16	278
Muenchen		9	1	13	4	3	28	1	1	60
Muenster	21	208	5	9	4	6	6		1	260

TABLE 7

Laboratory-confirmed *Salmonella* isolates from clinical nonhuman sources reported to the National Veterinary Services Laboratories by serotype and source, 2007

Serotype	All Others	Bovine	Chicken	Equine	Other birds / Wild animals	Other Domestic Animals /Environment	Porcine	Reptile	Turkey	Total
Muenster var. 15+		2								2
Mundonobo								1		1
Newport	14	232	6	105	57	19	20	2	5	460
Norwich				3		21				24
Ohio		21	1		2	3	41		1	69
Oranienburg	1	21	2	65	5	11	4	3		112
Orion		1								1
Orion var. 15+		1					1		1	3
Orion var. 15+,34+		1			1					2
Ouakam		1			3					4
Panama				1						1
Paratyphi B var. L(+) tartrate+		4		21	2	2		3		32
Pomona		3								3
Poona					1					1
Putten	1			1			2			4
Reading		23		3		3	3			32
Redlands		1								1
Rissen		1				1	6			8
Rubislaw				13		1				14
Ruiru		1								1
Saintpaul		5		10	11	2	5		19	52
Sandiego					1	1	1	1		4
Schwarzengrund		18		4	2		16	1	3	44
Senftenberg	3	15	6	3	35	4	66		131	263
Singapore								1		1
Taksony									1	1
Tallahassee				1						1
Tennessee		5			1	3			1	10
Thompson	1	11	1	24	2	3	1			43
Treforest								1		1
Typhimurium	15	244	6	143	51	16	223		5	703
Typhimurium var. 5-	8	220	6	30	53	24	530		8	879
Uganda	2	51		6		2	6		2	69
Uganda var. 15+	1	7							1	9
Urbana							1			1
Virchow				3						3
Westhampton						1				1

TABLE 7

Laboratory-confirmed *Salmonella* isolates from clinical nonhuman sources reported to the National Veterinary Services Laboratories by serotype and source, 2007

Serotype	All Others	Bovine	Chicken	Equine	Other birds / Wild animals	Other Domestic Animals /Environment	Porcine	Reptile	Turkey	Total
Worthington	1	7		1			53		2	64
Yarrabah								1		1
I 13,23:i:-		2								2
I 3,10:-:l,w		1					1			2
I 3,10:e,h:-		2					1			3
I 3,10:l,v:-							1			1
I 4,12:l,v:-					1		2		4	7
I 4,[5],12:-:1,2							2			2
I 4,[5],12:-:1,5		1					1			2
I 4,[5],12:d:-					1					1
I 4,[5],12:e,h:-		1								1
I 4,[5],12:i:-	3	32	8	33	17	3	31			127
I 4,[5],12:r:-					1		1			2
I 6,7:-:1,5	1	7	1	2	2		1	1		15
I 6,7:b:-				1						1
I 6,7:e,h:-				1						1
I 6,7:k:-		1		4	1					6
I 6,7:l,w:-		1								1
I 6,7:r:-				1	1					2
I 6,8:-:1,2				1						1
I 6,8:-:e,n,x						1				1
I 6,8:e,h:-		2		1		1				4
I 6,8:l,v:-				1						1
I 6,8:z10:-									1	1
I 8,20:-:z6		2					1			3
I 8,20:i:-		2								2
I 9,12:-:1,5							1			1
II 21:z10:[z6]								1		1
II 30:l,z28:z6								2		2
II 47:a:1,5						1				1
II 58:l,z13,z28:z6								2		2
IIIa 18:z4,z23:-								1		1
IIIa 18:z4,z32:-								1		1
IIIa 21:g,z51:-								1		1
IIIa 21:z29:-								3		3
IIIa 40:g,z51:-						1				1
IIIa 40:z4,z23:-					7					7

TABLE 7

Laboratory-confirmed *Salmonella* isolates from clinical nonhuman sources reported to the National Veterinary Services Laboratories by serotype and source, 2007

Serotype	All Others	Bovine	Chicken	Equine	Other birds / Wild animals	Other Domestic Animals /Environment	Porcine	Reptile	Turkey	Total
IIIa 41:z4,z23:-								3		3
IIIa 41:z4,z32:-								1		1
IIIa 42:z4,z24:-								1		1
IIIa 44:z4,z23:-						1				1
IIIa 45:z29:-							1			1
IIIa 48:g,z51:-							1			1
IIIa 48:z4,z24:-				2				1		3
IIIa 51:z4,z23:-				1						1
IIIa 53:z4,z23,z32:-								3		3
IIIa 53:z4,z23:-					1					1
IIIb (6),14:z10:z								2		2
IIIb 18:l,v:z								2		2
IIIb 21:l,v:z								1		1
IIIb 35:k:z53								1		1
IIIb 38:l,v:z35								2		2
IIIb 40:l,v:z	1									1
IIIb 42:l,v:1,5,7								1		1
IIIb 47:k:z35					1					1
IIIb 48:c:z								1		1
IIIb 48:i:z								1		1
IIIb 48:k:z53					1					1
IIIb 48:r:z								1		1
IIIb 48:z52:z	1				1			1		3
IIIb 50:k:z53								1		1
IIIb 50:r:z					1			3		4
IIIb 53:z10:z35								4		4
IIIb 58:z52:z35								2		2
IIIb 60:r:e,n,x,z15					1					1
IIIb 61:-:1,5,[7]						20				20
IIIb 61:l,v:1,5,7				1	1					2
IIIb 61:z35:-				1						1
IV 11:z4,z23:-								1		1
IV 16:z4,z32:-								1		1
IV 18:z36,z38:-								2		2
IV 40:z4,z24:-				1						1
IV 40:z4,z32:-								1		1
IV 43:z4,z23:-				1				6		7

TABLE 7

Laboratory-confirmed *Salmonella* isolates from clinical nonhuman sources reported to the National Veterinary Services Laboratories by serotype and source, 2007

Serotype	All Others	Bovine	Chicken	Equine	Other birds / Wild animals	Other Domestic Animals /Environment	Porcine	Reptile	Turkey	Total
IV 44:z36,[z38]:-		3				3				6
IV 44:z4,z24:-					1					1
IV 44:z4,z32:-								2		2
IV 50:g,z51:-								1		1
IV 50:z4,z23:-						1				1
Rough, mucoid, and/or nonmotile isolates	1	20	2	3	1		64		2	93
<b>Total</b>	<b>140</b>	<b>2720</b>	<b>167</b>	<b>801</b>	<b>451</b>	<b>224</b>	<b>2228</b>	<b>99</b>	<b>304</b>	<b>7134</b>

Note:

-----

Data from United States Department of Agriculture (USDA), Animal and Plant Health Inspection Service (APHIS), and National Veterinary Services Laboratory (NVSL).



TABLE 8

Laboratory-confirmed *Salmonella* isolates from non-clinical nonhuman sources reported to the National Veterinary Services Laboratories by serotype and source, 2007

Serotype	All Others	Bovine	Chicken	Equine	Other birds / Wild animals	Other Domestic Animals /Environment	Porcine	Reptile	Turkey	Total
Abaetetuba									5	5
Adelaide	1	1					10			12
Ago								2		2
Agona	30	42	43		2		44		50	211
Alabama			1							1
Alachua		1	3				1		1	6
Albany			2						4	6
Albert									1	1
Albuquerque	1									1
Altona			4							4
Amager			1						1	2
Amsterdam		1								1
Amsterdam var. 15+			2							2
Anatum	34	321	18	6			43		20	442
Anatum var. 15+	1	16	1				3			21
Anatum var. 15+,34+	4	10	1				2		1	18
Arechavaleta									12	12
Banana			1							1
Bareilly	3	6	30							39
Barranquilla	5	1	2				24			32
Bergen			1							1
Berta	5		36				2		10	53
Blockley			1							1
Bovismorbificans	4	7	3				1			15
Braenderup	3		63	4					1	71
Brandenburg	4	1	5				1		2	13
Bredeney	1	3	5						12	21
Cerro	98	323	44	7	2		1		1	476
Choleraesuis var. Kunzendorf	38						19			57
Cubana	1	2	19						4	26
Derby	17	36	4				148		10	215
Dublin	14	57	1							72
Ealing		1	1							2
Enteritidis	40	6	534		2	2	1		17	602
Fluntern	1									1
Fresno	3	6	2							11
Gaminara	3	1								4

TABLE 8

Laboratory-confirmed *Salmonella* isolates from non-clinical nonhuman sources reported to the National Veterinary Services Laboratories by serotype and source, 2007

Serotype	All Others	Bovine	Chicken	Equine	Other birds / Wild animals	Other Domestic Animals /Environment	Porcine	Reptile	Turkey	Total
Give	17	91	3		1					112
Give var. 15+	3	1								4
Give var. 15+,34+	1									1
Godesberg			6							6
Hadar	32	2	38		7	1	16		310	406
Hartford	10		1						1	12
Havana	14	5	12				1			32
Heidelberg	40		920		34	2	10		72	1078
Hvittingfoss		1								1
Idikan		1					3			4
Infantis	13	22	84			1	42		2	164
Istanbul			2							2
Javiana	1		28	1					2	32
Johannesburg	10		7		1		40		1	59
Kentucky	109	414	1078	6	55	2			13	1677
Kiambu	1	1	20		4					26
Kisarawe								1		1
Krefeld	1						1			2
Lexington	2									2
Lexington var. 15+			1							1
Lexington var. 15+, 34+	1									1
Lille	4	25	9				1		1	40
Litchfield	10		4		8				1	23
Liverpool	7		2							9
Livingstone	4		4				1			9
Lomita			1							1
London	3	2	1				10		227	243
Luciana			2							2
Manhattan							3		1	4
Mbandaka	32	236	104		4	1	3		9	389
Meleagridis	58	90	9				21		1	179
Meleagridis var. 15+		1								1
Miami		1		1						2
Minnesota	1	3	8						6	18
Mississippi	2		1							3
Mkamba								1		1
Molade			4							4

TABLE 8

Laboratory-confirmed *Salmonella* isolates from non-clinical nonhuman sources reported to the National Veterinary Services Laboratories by serotype and source, 2007

Serotype	All Others	Bovine	Chicken	Equine	Other birds / Wild animals	Other Domestic Animals /Environment	Porcine	Reptile	Turkey	Total
Montevideo	61	406	141	1	1		1	1	38	650
Muenchen	32	31	29				16		13	121
Muenster	46	77	11		2				88	224
Muenster var. 15+,34+	1	1	1						1	4
Newport	62	105	38	6		1	10	2	70	294
Nima	1									1
Norwich		1	3						1	5
Ohio	1	1	20				7		1	30
Oranienburg	10	8	54		3					75
Orion			6						12	18
Orion var. 15+	1	24	14							39
Orion var. 15+,34+	3	180	5						1	189
Ouakam	3		16							19
Panama	1	1	1				1			4
Paratyphi B var. L(+) tartrate+	13		9	3						25
Pomona	1	1	3							5
Poona					1					1
Putten	1	2	4							7
Reading	10	16	2				1		18	47
Rissen	2		6							8
Roodepoort	1									1
Rubislaw	13							2	2	17
Ruiru	2		2							4
Saintpaul	5	3	6	4			14		150	182
Sandiego	1									1
Schwarzengrund	15	3	140				3		28	189
Senftenberg	16	25	217		14		11		249	532
Sharon							6			6
Soerenga	2		1							3
Taksony	1		5						1	7
Tennessee			47				1		1	49
Thompson	11	8	77	3	3		1		3	106
Treforest	1									1
Typhimurium	44	61	198		37	2	52	2	34	430
Typhimurium var. 5-	31	72	125	1	4	10	326		33	602
Uganda	14	17	12			1	3		3	50
Uganda var. 15+		2								2

TABLE 8

Laboratory-confirmed *Salmonella* isolates from non-clinical nonhuman sources reported to the National Veterinary Services Laboratories by serotype and source, 2007

Serotype	All Others	Bovine	Chicken	Equine	Other birds / Wild animals	Other Domestic Animals /Environment	Porcine	Reptile	Turkey	Total
Virchow			2							2
Weltevreden			1							1
Westhampton									4	4
Westhampton var. 15+,34+									3	3
Widemarsh			2							2
Worthington			8				30		61	99
I 13,23:z:-									1	1
I 3,10:-:1,6									1	1
I 3,10:-:l,w	1	1								2
I 3,10:Nonmotile		1	2						1	4
I 3,10:e,h:-	1	2							2	5
I 3,15,34:z10:-			1							1
I 4,[5],12:-:1,2		1							1	2
I 4,[5],12:d:-							1		1	2
I 4,[5],12:e,h:-	1									1
I 4,[5],12:i:-	10	13	147	1	1		11		4	187
I 4,[5],12:r:-			5							5
I 40:b:-			2							2
I 6,7:-:1,5	3	1	45	1	1					51
I 6,7:-:e,n,z15					1					1
I 6,7:Nonmotile	2		2				2		4	10
I 6,7:k:-			14	2	2					18
I 6,7:r:-	1									1
I 6,7:z10:-	1	1	1							3
I 6,7:z6:1,5			1							1
I 6,8:e,h:-	1									1
I 6,8:z10:-									1	1
I 8,20:-:z6			6							6
I 8,20:i:-	1		6							7
I 9,12:-:1,5	1									1
I 9,12:Nonmotile		4	2							6
II 58:l,z13,z28:z6								2		2
IIIa 18:z4,z23:-	6		1						2	9
IIIa 18:z4,z32:-					1				12	13
IIIa 35:z4,z23:-						1				1
IIIa 40:z4,z23:-									12	12
IIIa 42:z4,z23:-								1		1

TABLE 8

Laboratory-confirmed *Salmonella* isolates from non-clinical nonhuman sources reported to the National Veterinary Services Laboratories by serotype and source, 2007

Serotype	All Others	Bovine	Chicken	Equine	Other birds / Wild animals	Other Domestic Animals /Environment	Porcine	Reptile	Turkey	Total
IIIa 51:z4,z23:-						1		1		2
IIIa 53:z4,z23:-									7	7
IIIa 56:z4,z23:-								1		1
IIIb 21:z10:e,n,x,z15		1								1
IIIb 35:k:e,n,x,z15								1		1
IIIb 38:(k):z35	2							1		3
IIIb 48:k:z53	1									1
IIIb 48:l,v:1,5,(7)		1								1
IIIb 50:z52:z53								1		1
IIIb 61:-:1,5,[7]		1				3	1			5
IIIb 61:l,v:1,5,7	1							1		2
IV 11:z4,z23:-		1								1
IV 44:z36,[z38]:-			2							2
IV 50:g,z51:-	1							1		2
Rough, mucoid, and/or nonmotile isolates	3	8	22		2		2		4	41
<b>Total</b>	<b>1130</b>	<b>2819</b>	<b>4642</b>	<b>47</b>	<b>193</b>	<b>28</b>	<b>952</b>	<b>21</b>	<b>1667</b>	<b>11499</b>

Note:

-----  
Data from United States Department of Agriculture (USDA), Animal and Plant Health Inspection Service (APHIS), and National Veterinary Services Laboratory (NVSL).