

# Efficiency of Field Laboratories for Ebola Virus Disease Outbreak during Chronic Insecurity, Eastern Democratic Republic of the Congo, 2018–2020

Daniel Mukadi-Bamuleka, Fabrice Mambu-Mbika, Anja De Weggheleire, François Edidi-Atani, Junior Bulabula-Penge, Meris Matondo Kua Mfumu, Anaïs Legand, Antoine Nkuba-Ndaye, Yannick Tutu Tshia N'kassar, Placide Mbala-Kingebeni, John D. Klena, Joel M. Montgomery, Jean-Jacques Muyembe-Tamfum, Pierre Formenty, Johan van Griensven, Kevin K. Ariën, Steve Ahuka-Mundeke

During the 10th outbreak of Ebola virus disease in the Democratic Republic of the Congo, the Institut National de Recherche Biomédicale strategically positioned 13 decentralized field laboratories with dedicated equipment to quickly detect cases as the outbreak evolved. The laboratories were operated by national staff, who quickly handed over competencies and skills to local persons to successfully manage future outbreaks. Laboratories analyzed ≈230,000 Ebola diagnostic samples under stringent biosafety measures, documentation, and database management. Field laboratories diversified their activities (diagnosis, chemistry and hematology, survivor follow-up, and genomic sequencing) and shipped 127,993 samples from the field to a biorepository in Kinshasa under good conditions. Deploying decentralized and well-equipped laboratories run by local personnel in at-risk countries for Ebola virus disease outbreaks is an efficient response; all activities are quickly conducted in the field.

Since the discovery of Ebola virus in 1976, the Democratic Republic of the Congo (DRC) has faced 15 Ebola virus disease (EVD) outbreaks. The 10th outbreak was the longest (August 1, 2018, through June 25, 2020) and the most widespread and caused the

most fatalities recorded to date in DRC (1,2). That outbreak occurred in urban-rural areas with high population mobility, was aided by good road infrastructure, and was driven by economic reasons and humanitarian issues. The movement of the population probably contributed to virus spread and created challenges for controlling the outbreak, in particular for contact tracing and ring vaccination. Community distrust of response teams, resulting from ≈2 decades of armed conflict in eastern DRC and commonly encouraged by sociopolitical leaders' messaging, especially during the 2018–2019 election period (3), led to recurring misunderstandings and rejection of most countermeasures proposed to control the outbreak.

In response to the scale and mobility of this outbreak, the Institut National de Recherche Biomédicale (INRB) in Kinshasha, DRC, deployed 13 field laboratories and strategically positioned them across the outbreak areas (3). The laboratories were aimed at bringing diagnostic capacity closer to the outbreak epicenters, shortening turnaround times, and providing real-time guidance for newly available medical countermeasures. Most laboratories were provided

Author affiliations: Rodolphe Merieux INRB-Goma Laboratory, Goma, Democratic Republic of the Congo (D. Mukadi-Bamuleka); Institut National de Recherche Biomédicale, Kinshasa, Democratic Republic of the Congo (D. Mukadi-Bamuleka, F. Mambu-Mbika, F. Edidi-Atani, J. Bulabula-Penge, M. Matondo Kua Mfumu, A. Nkuba-Ndaye, P. Mbala-Kingebeni, J.-J. Muyembe-Tamfum, S. Ahuka-Mundeke); University of Kinshasa, Kinshasha (D. Mukadi-Bamuleka, F. Mambu-Mbika, F. Edidi-Atani, J. Bulabula-Penge, M. Matondo Kua Mfumu, A. Nkuba-Ndaye,

P. Mbala-Kingebeni, J.-J. Muyembe-Tamfum, S. Ahuka-Mundeke); Institute of Tropical Medicine, Antwerp, Belgium (A. De Weggheleire, J. van Griensven, K.K. Ariën); World Health Organization, Geneva, Switzerland (A. Legand, P. Formenty); Direction de la Surveillance Épidémiologique, Kinshasa (Y. Tutu Tshia N'kassar); Centers for Disease Control and Prevention, Atlanta, Georgia, USA (J.D. Klena, J.M. Montgomery); University of Antwerp, Antwerp, Belgium (K.K. Ariën)  
DOI: <https://doi.org/10.3201/eid2901.221025>

with equipment and reagents to improve supportive care (3–5). Implementation and management required specific efforts, stringent biosafety measures, updated and well-maintained procedures, and technical expertise tailored to function in a volatile environment (3). We describe the deployment and management of field laboratories in terms of setup, logistics, technicalities, human resources, and security during the 10th EVD outbreak in eastern DRC.

### Deployment and Decommissioning of Field Laboratories

A field laboratory is a removable diagnostic unit, set up for specific purposes and for a limited time of operation (6,7). Field laboratories can be located in buildings adapted to the purpose or in transient structures or mobile platforms. In past EVD outbreaks, field laboratories were often established and managed through bilateral agreements between the host country and international entities. In DRC, a strong national EVD response and the expertise and availability of reverse transcription quantitative PCR diagnostic tools, GeneXpert Ebola assay (Cepheid, <https://www.cepheid.com>), ensured that the DRC INRB could coordinate and entirely manage laboratory response activities. Preparatory stages included strategic internal INRB meetings to discuss which type of laboratory to deploy.

During the 10th EVD outbreak, INRB deployed 3 types of laboratories: basic, standard, and advanced. The basic setup was focused on Ebola virus (EBOV) diagnosis, with a maximum of 2 GeneXpert instruments; biochemistry capacity was added if required. The standard setup had >2 GeneXpert instruments, along with biochemistry and hematology capacity for patient care and survivor follow-up (viral load in the body fluids, chemistry, and hematology). In the

advanced setup, either differential diagnosis (Sudan or Bundibugyo ebolavirus, in addition to Marburg, dengue, chikungunya, yellow fever, West Nile, Crimean-Congo hemorrhagic fever, or Rift Valley fever viruses) or genomic sequencing capacity was added to the standard setup. Laboratory tests related to research activities, such as administration of EBOV therapeutics (8,9), immunogenicity of Ervebo vaccine (Ebola Zaire vaccine, <https://www.fda.gov/vaccines-blood-biologics/ervebo>), and studies of EBOV reservoirs in bats were conducted in standard and advanced setups. After internal discussions, a proposal was presented to the response coordination team to collect feedback, if any. If agreement was reached, the laboratory was deployed according to INRB checklists for equipment, reagents, and accessories (Appendix, <https://wwwnc.cdc.gov/EID/article/29/1/22-1025-App1.pdf>). Materials were transported by air, land, or water with ≥1 INRB staff member assisted by local laboratory personnel. On site, the team set up the laboratory by adapting the workflow to the existing rooms or by rehabilitating or building additional space, if needed. In general, field laboratories were housed in structures located as close as possible to the Ebola treatment centers that they serviced. The average time between decision making and laboratory deployment was 4.7 (range 1–10) days. After deployment, the laboratory was functional within 24 hours. Thirteen field laboratories were deployed in the 3 affected provinces: 6 basic, 4 standard, and 3 advanced laboratories (Table 1). The laboratories of Beni, Mangina, and Goma were deployed from Kinshasa; the others were deployed from Beni (the main field laboratory); 1 laboratory (Tchowe, South-Kivu) was deployed from Goma field laboratory (Table 2).

Throughout the outbreak, there were multiple epicenters, which changed in intensity and locations

**Table 1.** Type of setup, activities, and sites in field laboratories for EVD outbreak, eastern Democratic Republic of the Congo, 2018–2020\*

Type of laboratory setup	Activities performed	Sites/provinces
Basic	EVD diagnosis: GeneXpert (+)†; Chemistry: Piccolo (+/–)‡	Tchomia/Ituri, Bunia/Ituri, Tchowe/South-Kivu, Bukavu/South-Kivu, Biakato/Ituri, Kasindi/North-Kivu
Standard§	EVD diagnosis: GeneXpert (+); Chemistry: Piccolo (+); Hematology: poch-100i (+)¶; Ebola survivors clinic	Mangina/North-Kivu, Goma/North-Kivu, Komanda/Ituri, Mambasa/Ituri
Advanced§	EVD diagnosis: GeneXpert (+); Chemistry: Piccolo (+); Hematology: poch-100i; Ebola survivors clinic; EVD differential diagnosis (Smart cycler or RPA) (+) or genomic sequencing (+)	Beni/North-Kivu, Butembo/North-Kivu, Katwa/North-Kivu

\*EVD, Ebola virus disease; RPA, recombinase polymerase amplification.

†GeneXpert, (Cepheid, <https://www.cepheid.com>).

‡Abaxis (<https://www.abaxis.com>).

§Systemex (<https://www.systemex.com>).

¶Research support: Ebola therapeutics through a Monitored Emergency Use of Unregistered and Investigational Interventions (MEURI) protocol or the Pamoja Tulinde Maisha/Together save lives (PALM) randomized controlled trial; the immunogenicity of rVSV-ZEBOV-GP vaccine; and the study of Ebola virus reservoir in bats.

**Table 2.** Origin of field laboratories deployed over time, distance covered, and transport means used, eastern Democratic Republic of the Congo, 2018–2020

Origin of deployment	Laboratory	Distance traveled, km	Means of transport
Kinshasa	Beni	1,669	Airplane
Kinshasa	Mangina	1,692	Airplane/car
Kinshasa	Goma	1,580	Airplane
Beni	Butembo	54	Car
Beni	Tchomia	256	Helicopter
Beni	Bunia	147	Helicopter
Beni	Katwa	60	Car
Beni	Komanda	127	Helicopter
Goma	Tchowe	421	Helicopter
Beni	Bukavu	339	Airplane
Beni	Mambasa	137	Helicopter
Beni	Biakato	70	Helicopter
Beni	Kasindi	75	Car

over time. Deploying a flexible model of laboratories at the epicenters of the outbreak enabled well-structured and coordinated actions involving all pillars of the response. Results were quickly provided on site to enable timely public health interventions and mitigate the risk for security incidents as transportation of samples was reduced. Decentralized setups were maintained to support routine EVD surveillance in remote areas and detect eventual flare-ups. The presence of skillful local laboratory workers strongly decreased the number of national and foreign experts to be deployed and fostered community engagement. Field laboratories helped integrate response activities into the health system.

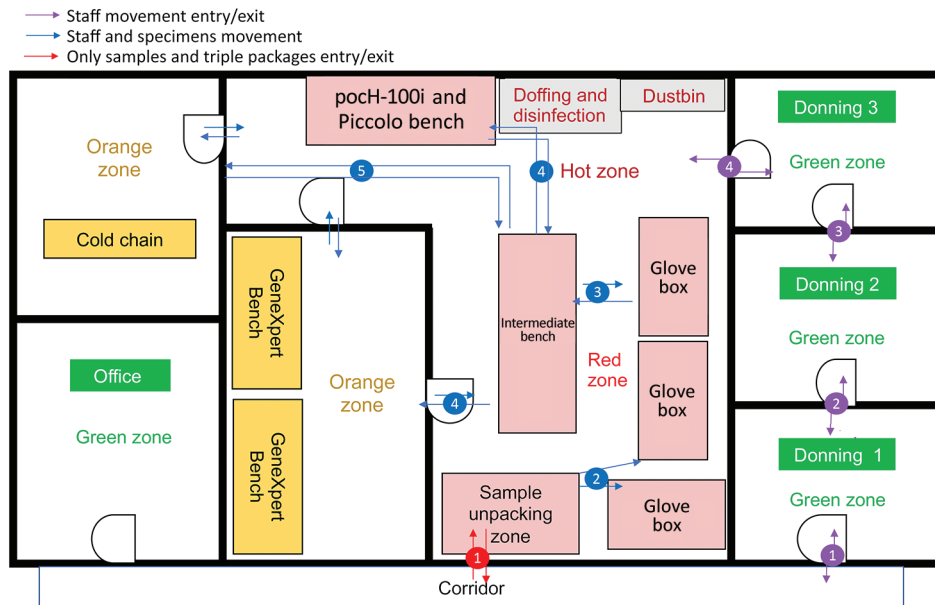
Seven laboratories were then decommissioned. All instruments were decontaminated according to INRB standard operating procedures, disassembled, and packed in specific boxes or suitcases, shipped to Beni, and later shipped to Goma or Kinshasa. The laboratories in Beni, Mangina, Butembo, Bunia, Bukavu, and Mambasa are still functional.

### Field Laboratory Composition, Biosafety and Biosecurity, and Cleaning and Decontamination

To mitigate the risk for exposure, protect the safety of the laboratory workers, and prevent environmental contamination, EBOV-suspected samples must be handled in a Biosafety Level 3 (BSL-3) laboratory or BSL-3-like conditions (standard personal protective equipment [PPE], negative pressurized glove box, restricted access to the laboratory, laboratory staff trained and vaccinated) (10,11). Hence, deployment of BSL-3-like structures is needed at outbreak locations. An INRB field laboratory contained 3 mandatory areas: hot zone, cold zone, and extra space. Inside the hot zone, we considered the red zone as the space for sample reception, unpacking and testing (Piccolo [Abaxis, <https://www.abaxis.com>], pochH-100i [Sys-

mex, <https://www.sysmex.com>], and iStat [Abbott, <https://www.abbott.com>]), and PPE doffing; the orange areas were set up for GeneXpert bench (Cepheid, <https://www.cepheid.com>) and cold chain. The cold zone included multiple-step donning areas. The extra space was used for supply storage and the administrative office (Figure 1). The basic setup had a hot zone and an extra space in which donning PPE, supplies storage, and administrative offices were located (Figure 2). Samples for diagnosis were inactivated and aliquoted within the glove box. Piccolo discs and iStat cartridges were prepared in the glove box and tested with respective instruments at the bench. Because the red and orange zones were contiguous in most settings, the staff working in these areas dressed in full PPE (Tyvek coverall, goggles or face shield, mask [N100 or FFP3], long-cuff nitrile gloves, and laboratory shoes with shoe covers). In cold zones, staff were dressed with light PPE (surgical gown, head covering, and mask [N95 or FFP2]; short-cuff nitrile gloves; and laboratory shoes). Access to the laboratory was restricted to INRB-trained and Ervebo-vaccinated persons (vaccinated  $\geq 10$  days before working).

At the beginning of the day, trained hygienists cleaned the floors with 0.5% bleach and emptied the dustbins while dressed in full PPE (hot zone) or light PPE (cold zone). At the end of the day, laboratory operators disinfected the inner part of the glove boxes and the benches with bleach 0.5% or other solutions (e.g., Rely+On [Virkon, <https://relyondisinfection.com>], CDiffend [2XL Corporation, <https://www.2xlpro.com>]), according to INRB standard procedures. In addition to daily cleaning/decontamination, every 2 weeks in each laboratory, workers decontaminated the glove boxes (inside/outside), benches, and all other surfaces and maintained instruments. Cleaning/decontamination activities were recorded



**Figure 1.** Advanced field laboratory setup used for Ebola virus disease outbreak during chronic insecurity, eastern Democratic Republic of the Congo, 2018–2020. GeneXpert, (Cepheid, <https://www.cepheid.com>); pocH-100i (Sysmex (<https://www.sysmex.com>); Piccolo (Abaxis (<https://www.abaxis.com>)).

in laboratory registers, maintenance sheets, and decontamination sheets.

### Field Laboratory Equipment

#### Point-of-Care Devices

Laboratory capacities evolved over the course of multiple EVD outbreaks and followed the level of care provided to persons with confirmed cases. In the past, most EVD laboratories had only reverse transcription PCR testing. Toward the end of the 2013–2016 outbreak in West Africa, cost-effective, rapid, and sensitive tools to detect EBOV at point-of-care and to guide provision of treatments had been developed but were not widely available (12). During the ninth EVD outbreak in DRC (Equateur, 2018), the GeneXpert technology was introduced in a structured way to diagnose EVD in 3 remote laboratories. The tool enables a quick diagnosis (turn-around time <4 hours) and differentiates, by means of its double target (nucleoprotein [NP] and glycoprotein [GP]), between recently Ervebo-vaccinated persons (only GP gene detected) and persons with acute EVD cases (NP and GP detected). From the 10th EVD outbreak on, a standard Ebola field laboratory included in addition to GeneXpert, pocH-100i (hematology), Piccolo (biochemistry), i-STAT (biochemistry), and a glove box (virus inactivation and sample processing).

A total of 47 GeneXpert IV-modules, 17 Piccolo, 10 iStat, 8 pocH-100i, and 19 glove boxes were deployed. Three types of glove boxes were used: 8 Cleatech HEPA Filtered (Cleatech LLC, <https://www.cleatech.com>), 8

Könnecke Ultra (Bodo Könnecke, <https://www.koennecke-berlin.de>), and 3 Germ Free (Germfree Laboratories <https://www.germfree.com>) (Table 3, <https://wwwnc.cdc.gov/EID/article/29/2/22-1025-T3.htm>).

#### Maintenance and Quality Control

Instrument maintenance was performed every 2 weeks, according to INRB standard procedures. Quality control was done monthly on instruments per site by using the Piccolo control kit level 1, 2, 3; the iStat TriControls level 1, 2, 3; the Sysmex Eightcheck3WP-N/L/H; and a GeneXpert positive blood and semen specimen (prepared at the US National Institutes of Health, National Institute of Allergy and Infectious Diseases, Bethesda, Maryland, USA). Xpert calibration cartridges were run on all instruments every 6 months. All records were stored in specific binders in the laboratory and uploaded on INRB dropbox and Huddle cloud (<https://us.huddle.com>; no longer available).

#### Cold Chain Setup

The standard cold chain included refrigerators (+2°C to +8°C) and freezers (–20°C). The main cold chain located in the Beni laboratory could store up to 40,000 specimens at a time (from different laboratories). It comprised refrigerators and 3 types of freezer (–20°C, –40°C, and –80°C) (Table 3). Power was supplied by three 14-kva generators running alternately, 24 hours/7 days a week. In other laboratories, standard cold chain was continuously connected to five 10-kva generators. Site-to-site transport of specimens was achieved by using biological



triple-packaging boxes (UN 4H2/GLASS 6.2/14 or BioPack-2 [Airs Sea Containers LTD, <https://www.airseadg.com>]) filled with frozen icepacks. Given the limited storage capacity in the main cold chain, samples were shipped to the biorepository in Kinshasa. In each laboratory, samples were stored at  $-20^{\circ}\text{C}$  and reagents at  $+2^{\circ}\text{C}$  to  $+8^{\circ}\text{C}$ . Traceable Otio (<https://www.otio.com>) trackers were used to monitor the temperature inside refrigerators, freezers, and laboratory spaces twice daily. Approximately 120,000 samples were stored in the field and then shipped safely to the Kinshasa biorepository for long-term preservation (3).

### Logistics for Implementing and Managing Field Laboratories

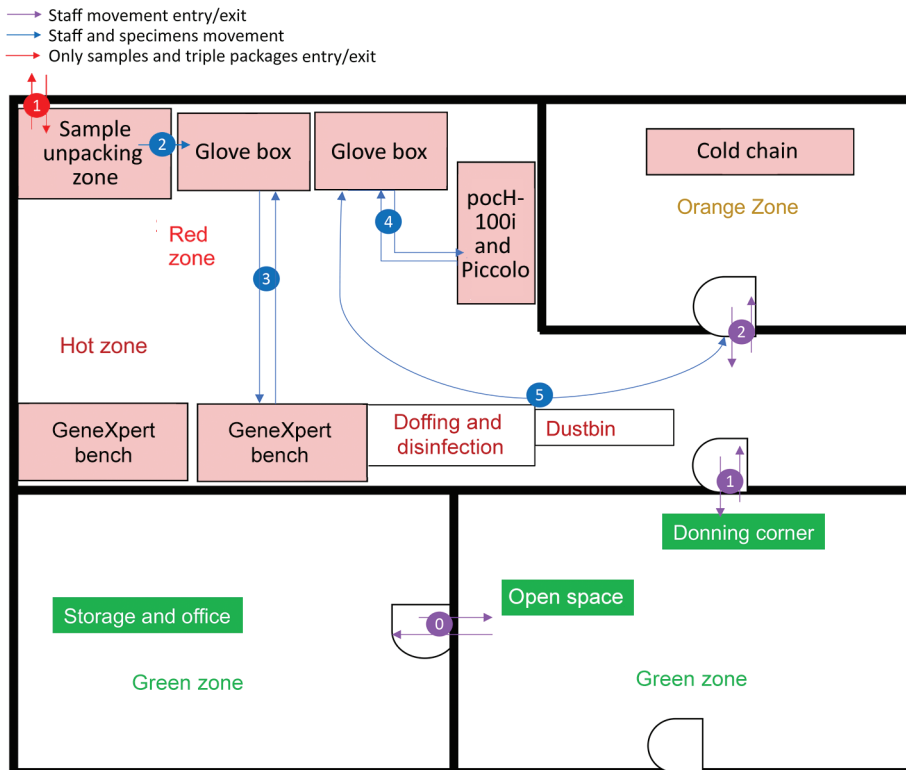
During the 10th EVD outbreak, field laboratories faced tremendous challenges. The 7 main challenges were: 1) activities interruption after attacks on response teams; 2) movement of contacts and suspected and confirmed case-patients resulting in further spread of the disease; 3) slow resumption of activities after security incidents; 4) evacuation of response staff out of outbreak areas during insecurity events; 5) delayed implementation of activities; 6) disruption to refilling laboratory supplies and fuel; and 7) delayed sample transportation to the laboratory (especially for sequencing unit) (13).

### Equipment and Supplies

Most equipment and supplies were purchased abroad and shipped to Kinshasa. Thereafter, they were airlifted to Beni laboratory, from where the distribution was organized to other sites. Parcels were transported by road, air, and boat by using the World Health Organization and the World Food Program logistics. Finale Inventory software (<https://app.finaleinventory.com>) was used for the stock management of items at the main warehouses in Beni and Kinshasa. It alerted the laboratory and logistics staff via email regarding the status of items (in critical stock or nearly to be expired). The logistics team could therefore anticipate shortages, prepare timely orders, and prioritize the use of items close to expiration date.

### Laboratory Activities

The most prominent activities conducted in the field laboratories were EVD diagnosis and training. Laboratories contributed to providing investigational therapeutics to treat patients with confirmed cases, and they were equipped with clinical laboratory capacities (8,9). Five laboratories supported survivor activities, 1 conducted genomic sequencing, and 2 performed differential diagnoses (13,14). Throughout the outbreak, 9.3 tons of equipment were deployed across sites (3), 230,936 Ebola Xpert cartridges were used and subsequently shipped to the Goma



**Figure 2.** Basic field laboratory setup used for Ebola virus disease outbreak during chronic insecurity, eastern Democratic Republic of the Congo, 2018–2020. GeneXpert, Cepheid, <https://www.cepheid.com>; pocH-100i, Sysmex, <https://www.sysmex.com>; Piccolo, Abaxis, <https://www.abaxis.com>.

laboratory for proper disposal by incineration, as per World Health Organization recommendations. Laboratory performance was evaluated by 2 indicators: proportion of new suspect samples tested within 48 hours and proportion of results delivered within 24 hours. Despite challenging conditions, field laboratories tested 100% of samples with turnaround times of  $\leq 48$  hours.

### **Sample Management, Sample Testing, and Results Communication**

Samples were collected by the surveillance team; care team; safe and dignified burials team; or survivors' team. The preferred sample for EBOV diagnosis was whole blood or plasma, although other specimens were oral secretions from cadavers, blood swab samples (patients with circulatory collapse, infants), semen and vaginal secretions from survivors, fetal annexes in delivering survivors, and breast milk in breastfeeding survivors. In care units, samples were collected 1–4 hours after admission during the day (delay mainly resulted from time to stabilize the patient, high number of patients to be sampled, and preparation of sampling material and notification forms). Patients received at night underwent sampling the next morning, after the laboratory was opened. Samples were transported in triple-packaging boxes to the laboratory within 10–20 minutes. At the laboratory, samples were received on a dedicated table, unpacked while personnel dressed in PPE disinfected different layers of the packing, and then transferred through a window into the hot zone for processing.

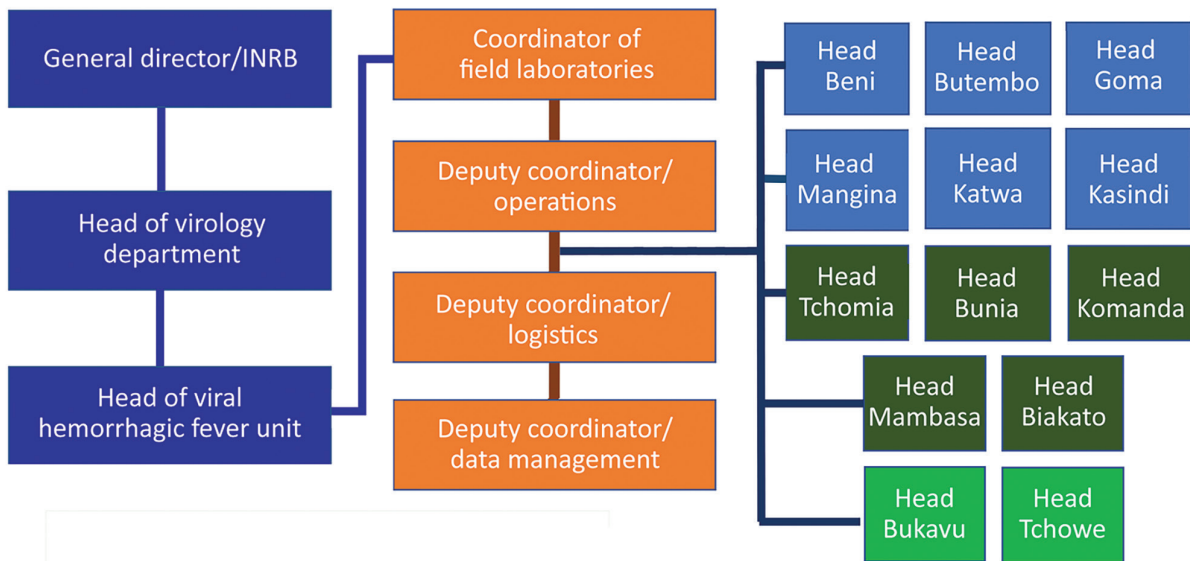
Chemistry and hematology samples were given priority because those results could help clinicians quickly adjust the care provided (e.g., correction of hypoglycemia, electrolyte imbalance, anemia, shock). Chemistry and hematology samples were processed within 30–40 minutes (from reception to testing). The Piccolo results were read within 12 minutes, whereas pocH-100i outputs were available in 2 minutes. For diagnosis, new suspected samples were processed first to confirm or invalidate their EVD status, and then the follow-up samples were processed. Only the amount of sample required for testing in the GeneXpert lysis buffer (guanidinium thiocyanate) was inactivated. Samples for hematology and chemistry were not inactivated. Cryotubes were labeled (initials of the site, number assigned in an ascending way, type of sample, and type of blood tube), samples were aliquoted in cryotubes, and then aliquots were transferred into 9 × 9 labeled grids (same type of samples per cryobox) and stored in the cold chain.

### **Handling Data and Communicating Results**

Samples tubes were identified per team collecting the specimen. A notification form accompanying the sample to the laboratory contained the patient identification and sociodemographic, epidemiologic, and clinical information. Additional information (laboratory identification, type of sample, analyses done, type of blood tube, number of aliquots, grid labels, date of testing, EBOV results, and cycle threshold values) were added in the laboratory to make a line list in Microsoft Excel 2016 (<https://www.microsoft.com>). All issues related to spelling or transcription errors were deconflicted by using sociodemographic, clinical, epidemiologic information, and laboratory results. The communication of laboratory results was organized by psychosocial teams in close coordination with families and other teams (3). The laboratory head shared results daily with the response coordination via sending the Microsoft Excel line list by email. All laboratory results were centralized in a database (15). Most samples (212,655 [89.1%]) were tested with GeneXpert, 19,227 (8%) by clinical chemistry, and 6,766 (2.8%) by hematology. In total, 207,065 (86.8%) blood, 27,313 (11.4%) oral swabs, and 1,544 (0.6%) semen samples were tested (Table 4, <https://wwwnc.cdc.gov/EID/article/29/2/22-1025-T4.htm>). We were successful in testing this unprecedented number of samples because of the extended duration of the outbreak (22 months), the number of laboratories deployed, the diversity of activities performed (diagnostic, patient biochemistry and hematology, viral load monitoring, survivor follow-up, and full-genome sequencing), the management of all laboratories by 1 institution (centralized information, data, and samples), and the community-based surveillance (which improved sample flow).

### **Sample Shipments**

Most samples collected were shipped to the INRB biorepository in Kinshasa along with corresponding databases by email. Shipments of large batches of samples were done with chartered cargo flights. Site-to-site sample transportation was performed by fleets and vehicles supported by the World Food Program, MONUSCO (<https://monusco.unmissions.org>), and the World Health Organization. A total of 127,993 samples were shipped from the Beni laboratory to Kinshasa through 7 large shipments. Decision making for samples shipment was guided by the limitation of the storage capacity on the ground and the need to evacuate the Ebola specimens to a safe area.



**Figure 3.** Organizational chart for field laboratories used for Ebola virus disease outbreak during chronic insecurity, eastern Democratic Republic of the Congo, 2018–2020. INRB, Institut National de Recherche Biomédicale.

**Human Resources Management**

Activities were conducted by medical-biologist doctors, biologists, and laboratory technicians assisted by supporting staff (administrative, logistics, hygienists, security guards, drivers) (Table 5, <https://wwwnc.cdc.gov/EID/article/29/2/22-1025-T5.htm>; Figure 3). Local staff members were recruited mostly in the main health facilities of affected provinces or cities; national staff came from INRB (Kinshasa). All laboratory personnel were trained with regard to biosafety and biosecurity; PPE donning and doffing; good clinical and laboratory practices; sample collection, packaging, and transportation; sample manipulations within a glove box; instrument manipulation

and troubleshooting; and safety and emergency management. Refresher trainings were scheduled each trimester, whenever a new staff member started at the laboratory or when an error occurred throughout the testing process. The laboratory was headed by a medical-biologist doctor or biologist assisted by a bench supervisor. The laboratory head was responsible for sample processing, results validation and delivery, quality control and final laboratory records, participation in daily coordination meeting, engaging with other working groups, and drafting the reports and communication. The laboratory head reported daily to the coordinator of all field laboratories who, in turn, presented the global situation at the general

**Table 6.** Armed groups in Ebola operational zones and time taken to deploy and operate field laboratory, eastern Democratic Republic of the Congo, 2018–2020\*

Site	Security background	Results achieved		
		Date of installation	Time taken to deploy laboratory	Time laboratory remained functional, mo
Beni	ADFrebels: near Virunga Parc (ADF stronghold); popular pressure groups and citizens movements; Maï Maï rebel groups	2018 Aug 2	1 d	45*
Mangina	Maï Maï rebel groups; ADF rebels	2018 Aug 11	9 d	45*
Butembo	Maï Maï rebel groups; popular pressure groups; citizens movements	2018 Sep 7	6 d	44*
Tchomia	Maï Maï rebel groups; CODECO rebel Group	2019 Sep 28	6 d	3
Katwa	Maï Maï rebel groups; popular pressure groups	2019 Jan 18	10 d	26
Komanda	Maï Maï rebel groups; ADF rebels	2019 Jan 18	7 d	15
Mambassa	Maï Maï rebel groups; ADF rebels	2019 Sep 2	10 d	18
Tchowe	Maï Maï rebel groups; FDLR rebels	2019 Aug 19	2 d	2
Biakato	Maï Maï rebel groups; ADF rebels	2019 Oct 12	10 d	5
Kasindi	Located in the Virunga Park (Ugandan border); Ugandan rebels stronghold	2019 Oct 28	10 d	6

\*As of May 2, 2022. ADF, Allied Democratic Forces; CODECO, Coopérative pour le Développement du Congo; FDLR, Democratic Forces for the Liberation of Rwanda.

**Table 7.** Major security incidents during the 10th Ebola virus disease outbreak, eastern Democratic Republic of the Congo, 2018–2020

Incident	Site (period)	Consequences
Attack on the response team	Beni (Aug 2018)	Response activities stopped, and recovery took longer to reach full operation
Several days off + murder of civilians	Beni (Sept 2018)	Response activities stopped for few days
Election unrest + destruction of the ETU	Beni/Butembo (Dec 2018)	Response teams evacuated
Attacks on laboratory, surveillance, and coordination teams	Oicha-Eringeti (Dec 2018)	Komanda laboratory deployment delayed
Attackers set fire to Katwa and Butembo ETU	Katwa/Butembo (Feb 2019)	Temporary ETU closure
Attack on the response teams	Butembo (Apr 2019)	Response activities stopped, and 1 foreign doctor killed
Attack on the response teams	Biakato/Beni (Nov 2019)	Evacuation of teams to Goma and Kinshasa, 6 deaths

\*ETU, Ebola treatment unit.

coordination meeting. Staff were granted a break after 3 months of work or in any emergency situation. The bench supervisor was responsible for organizing the bench workload and schedules, sample processing and storage, functioning and maintenance of laboratory instruments, cleaning and decontamination procedures, records tracking, and training of new staff. The administrative staff were in charge of preparing paperwork, data entry, data management, results typing, printing, and distribution. Over the course of the outbreak, INRB created a unique database template used by all laboratories, which were shared monthly with the coordinator of field laboratories. We employed 134 personnel, including 9 medical-biologist doctors, 21 biologists, and 62 laboratory technicians (Table 5). INRB fostered capacity building to quickly hand over Ebola response tools and competences to local staff to empower the health system and decentralize the diagnostics. The local capacity setup at the peripheral level allowed sustained and successful management of 3 successive EVD flare-ups (Butembo in 2021, Beni in 2021 and 2022).

### Security Concerns during the 10th EVD Outbreak

The overall societal context of the eastern DRC led to express reluctance toward most EVD countermeasures. Of the 13 laboratories, 10 were deployed within unsafe areas. Thus, on several occasions, teams were attacked by rebels, militia, and other hostile groups. Those threats delayed or impeded deployment and supervision of activities, sample handling, and staff movement (Tables 6, 7). To manage security in the field, transportation of all personnel movement, equipment, and supplies had to be approved by a security commission. Depending on the context, some convoys had to be escorted by security forces, using military devices such as armored vehicles and pickup trucks with machine guns and bulletproof vests for passengers. In unsafe areas, a curfew was set from 6:00 PM to 6:00 AM, except for a few teams, which were circulating under security

escort until late to maximize timely results. In unsafe areas, laboratories were protected by armed guards to prevent eventual attacks, sabotage, or disruption. Despite the security incidents encountered, field laboratories operated for an average of 21 months, supporting all pillars of the response.

### Conclusions

In countries at high risk for EVD outbreaks, decentralized laboratories should be strategically positioned to timely detect EBOV. Health authorities should supply them with dedicated equipment and well-prepared teams, built on local know-how to organize efficient responses. A tiered and decentralized policy of laboratories during outbreaks provides flexibility for managing materials and supplies, logistics, and human resources in the health system. The quick handover of competences and capacities to local staff led during the 10th EVD outbreak in the DRC led to sustained and successful management of further outbreaks. Nonetheless, efforts should be made to use new diagnostic and research tools in the laboratory to considerably reduce turnaround time to <24 hours, to strongly improve patient management and research activities, to foster real-time genomic sequencing, and to support follow-up of EVD survivors.

### Acknowledgments

We thank the following for their contributions to this work: Ministry of Health of the Democratic Republic of the Congo and Partners of the Ministry of Health, Kinshasa, DRC; Health District Offices in North-Kivu, Ituri, and South-Kivu; World Health Organization (Headquarter and Afro Region); Africa Centres for Diseases Control and Prevention, Addis-Ababa, Ethiopia; Institut Pasteur de Dakar, Dakar, Senegal; US National Institutes of Health, National Institute of Allergy and Infectious Diseases, Bethesda, Maryland, USA; US Centers for Diseases Control and Prevention, Atlanta, Georgia, USA; Japanese International Agency for Cooperation, Country Office, Kinshasa, DRC; Institut de Recherche pour le



Développement, IRD, Montpellier, France; Institute of Tropical Medicine, Antwerp, Belgium; Médecins Sans Frontières (MSF all); The Alliance for International Medical Action, Dakar, Senegal; INRB, Kinshasa; and INRB, field laboratories.

## About the Author

Dr. Mukadi-Bamuleka is a medical doctor and medical virologist at the INRB, Kinshasa, DRC. His expertise includes implementation and coordination of field laboratories during outbreaks (Ebola, COVID-19, monkeypox), serosurveys, and evaluation of diagnostic tools for emerging viruses.

## References

- Mukadi-Bamuleka D, Sanogo YO, Bulabula-Penge J, Morales-Betoulle ME, Fillon P, Woodruff P, et al. Postmortem surveillance for Ebola virus using OraQuick Ebola rapid diagnostic tests, eastern Democratic Republic of the Congo, 2019–2020. *Emerg Infect Dis.* 2022;28:420–4.
- Aruna A, Mbala P, Minikulu L, Mukadi D, Bulemfu D, Edidi F, et al.; CDC Ebola Response. Ebola virus disease outbreak – Democratic Republic of the Congo, August 2018–November 2019. *MMWR Morb Mortal Wkly Rep.* 2019;68:1162–5. <https://doi.org/10.15585/mmwr.mm6850a3>
- Mukadi-Bamuleka D, Ahuka-Mundeye S, Ariën KK. Ebola virus: DRC field laboratories' rapid response. *Nature.* 2022;604:246. <https://doi.org/10.1038/d41586-022-01005-6>
- Inglis TJ. The lab without walls: a deployable approach to tropical infectious diseases. *Am J Trop Med Hyg.* 2013;88:614–8. <https://doi.org/10.4269/ajtmh.12-0704>
- Naidoo D. Laboratory response to the West African Ebola outbreak 2014–2015. *Wkly Epidemiol Rec.* 2015 Aug 7;90:393–9.
- Chamberlain DB, Kodgule R, Fletcher RR. A mobile platform for automated screening of asthma and chronic obstructive pulmonary disease. *Annu Int Conf IEEE Eng Med Biol Soc.* 2016;2016:5192–5. <https://doi.org/10.1109/EMBC.2016.7591897>
- Njanpop-Lafourcade BM, Hugonnet S, Djogbe H, Kodjo A, N'douba AK, Taha MK, et al. Mobile microbiological laboratory support for evaluation of a meningitis epidemic in northern Benin. *PLoS One.* 2013; 8:e68401. <https://doi.org/10.1371/journal.pone.0068401>
- Mulangu S, Dodd LE, Davey RT Jr, Tshiani Mbaya O, Prochan M, Mukadi D, et al.; PALM Writing Group; PALM Consortium Study Team. A randomized, controlled trial of Ebola virus disease therapeutics. *N Engl J Med.* 2019;381:2293–303. <https://doi.org/10.1056/NEJMoa1910993>
- World Health Organization, African Region. Consultation on monitored emergency use of unregistered and investigational interventions for Ebola virus disease (EVD) [cited 2022 Mar 28]. <https://www.afro.who.int/publications/consultation-monitored-emergency-use-unregistered-and-investigational-interventions>
- Grolla A, Jones SM, Fernando L, Strong JE, Ströher U, Möller P, et al. The use of a mobile laboratory unit in support of patient management and epidemiological surveillance during the 2005 Marburg outbreak in Angola. *PLoS Negl Trop Dis.* 2011;5:e1183. <https://doi.org/10.1371/journal.pntd.0001183>
- Logue CH, Lewis SM, Lansley A, Fraser S, Shieber C, Shah S, et al. Case study: design and implementation of training for scientists deploying to Ebola diagnostic field laboratories in Sierra Leone: October 2014 to February 2016. *Philos Trans R Soc Lond B Biol Sci.* 2017;372:20160299. PMID: 28396470
- Kaushik A, Tiwari S, Dev Jayant R, Marty A, Nair M. Towards detection and diagnosis of Ebola virus disease at point-of-care. *Biosens Bioelectron.* 2016;75:254–72. <https://doi.org/10.1016/j.bios.2015.08.040>
- Kinganda-Lusamaki E, Black A, Mukadi DB, Hadfield J, Mbala-Kingebeni P, Pratt CB, et al. Integration of genomic sequencing into the response to the Ebola virus outbreak in Nord Kivu, Democratic Republic of the Congo. *Nat Med.* 2021;27:710–6. <https://doi.org/10.1038/s41591-021-01302-z>
- Williams A, Amand M, Van den Bergh R, De Clerck H, Antierens A, Chaillet P. Ensuring on-site Ebola patient monitoring and follow-up: development of a laboratory structure embedded in an Ebola Treatment Center. *Disaster Med Public Health Prep.* 2019;13:1028–34. <https://doi.org/10.1017/dmp.2019.39>
- Durski KN, Singaravelu S, Teo J, Naidoo D, Bawo L, Jambai A, et al. Development, use, and impact of a global laboratory database during the 2014 Ebola outbreak in West Africa. *J Infect Dis.* 2017;215:1799–806. <https://doi.org/10.1093/infdis/jix236>

---

Address for correspondence: Daniel Mukadi-Bamuleka, Department of Virology, Institut National de Recherche Biomédicale (INRB), 5345, Avenue de la Démocratie (Ex Des Huileries), Kinshasa-Gombe, Democratic Republic of the Congo; email: drmmukadi@gmail.com

# Efficiency of Field Laboratories for Ebola Virus Disease Outbreak during Chronic Insecurity, Eastern Democratic Republic of the Congo, 2018–2020

## Appendix

### 1: Decision-making for laboratories' deployment

Key factors influencing whether and where to deploy field laboratory

- 1) Increase of confirmed-cases in a defined area not previously reporting cases
- 2) Lack of pre-existing laboratory capacity in the affected area
- 3) Possibility of EVD outbreak to reach big cities, from where it can easily spread (presence of roads, airports, harbors...)
- 4) Population density in the affected area (as this can accelerate the EVD spread)
- 5) Possible population movements (especially if roads were in good conditions)
- 6) Possibility of crossing internal and international borders
- 7) Risk of spread to an unsecured zone (land under rebels' control)
- 8) Site accessibility of samples shipment and laboratory's supplies refill

#### Additional points addressed before proceeding to deployment

- 1) Proximity to EVD treatment units
- 2) Easy access for surveillance and safe and dignified burials teams
- 3) Presence of public health facilities in the area to host the laboratory
- 4) Availability of rooms constructed in durable materials (well ventilated with water/electrical supply, ready to be reconfigured into the desired standards)

- 5) Presence of an incinerator for biohazardous waste
- 6) Security measures including an integral fence and guards/units

## **2: Main challenges**

Challenging situations can be summarized as follows:

### A. Related to access and security issues

- 1) Bad road conditions in certain areas
- 2) Harsh geographical conditions to access certain areas
- 3) Cost of transport
- 4) Safety and security threats and attacks on personnel (from rebels, militia and population), equipment (loss or damage) and work (have to stop working several hours even)

### B. Work force issues

- 1) Need of building capacity for local staff in lab techniques such as working in the glovebox, unidirectional flow work, PPE use, decontamination process
- 2) Biosafety and biosecurity practices (almost new for most of staff)

### C. Logistics issues

- 1) Limited storage capacity due to important number of samples processed per day (13 laboratories) and also samples stuck in laboratories during insecurity periods
- 2) Difficulty to organize more shipments from the field due to high cost of chartered flights
- 3) Related to equipment maintenance, damage and loss
- 4) Related to energy requirements

### D. Related to data management & communication of results

**E. Financial resources issues:** limited financial resources due to steadily increase in human resources, laboratory's needs (reagents and supplies shortage) and logistics to support

### **3: Waste management**

- 1) Non-biohazardous waste was collected in plastic bags which were wrapped, then sealed with adhesive tape until they were transported to the incinerator.
- 2) Laboratory waste was treated as biohazardous and separated at each step of samples processing.
- 3) Items soiled by biological materials (tubes, tissues, pipet-tips etc) were processed in the glovebox and disinfected with 10% bleach or others (Rely+On Virkon<sup>®</sup>, CDiffend<sup>®</sup>).
- 4) After samples' manipulation, soiled materials were wrapped in small biohazard bags, sealed with adhesive tape, sprayed with disinfectant to minimize the microbial load, taken out of the glovebox and dropped into larger biohazard bags which, were also sealed with adhesive tape.
- 5) Trained hygienists used plastic garbage to transport all parcels and load them into the incinerator.
- 6) Used Xpert<sup>®</sup> Ebola cartridges were stored across sites and then shipped to the central repository in Beni for temporary storage.
- 7) Once the Addfield<sup>®</sup> incinerator (could reach > 1000°C) was purchased and installed in July 2019, all used Xpert<sup>®</sup> Ebola cartridges were regularly shipped to Goma for appropriated disposal.

### **4: Power management**

- 1) Electricity was continuously supplied by 10 to 50 Kilo volt Ampere (KVA) generators.



- 2) Equipment was connected to Uninterruptable Power Supply (UPS) and stabilizers units to prevent any electricity variation.
- 3) Backup generators were alternately run to ensure uninterrupted power supply to the laboratory.
- 4) Management of the generators required an extensive logistics, continuous fuel, oil and spare-parts provision for almost two years.

## **5: Genomic sequencing**

- 1) At the beginning of the outbreak, the first samples of confirmed cases were regularly shipped to INRB-Kinshasa for full genomic sequencing.
- 2) From September 2019, we implemented a field genomic sequencing laboratory in Katwa (Butembo city) to support the surveillance activities in the monitoring of an epidemic which tended to get out of control (spread in the time and the space) with new confirmed cases emerging from unidentified sources.
- 3) The near real-time data generated throughout the outbreak helped in the detection and management of unknown transmission chains.
- 4) One aliquot of samples from new confirmed cases was transferred from different sites to the sequencing laboratory in Katwa.
- 5) The remaining aliquots were rapidly shipped with Ebola negative samples to the central cold chain in Beni.
- 6) The maximum time taken to transport positive aliquots from their laboratory of confirmation to the sequencing laboratory was 48-72 hours, following the availability of transport means (helicopter/plane flights and vehicles).
- 7) The field sequencing laboratory analyzed 219 samples in total, 60 of them did not have any epidemiological links although 39 of them (65%) gave full genome coverage.

## 6. Field Laboratory Deployment Checklist

Product ID	Category	Description	Unit	Note
<b>Laboratory Equipment</b>				
	Laboratory Equipment	GeneXpert Machine	each	
	Laboratory Equipment	UPC	each	
	Laboratory Equipment	Piccolo Analyser	each	
	Laboratory Equipment	ISTAT Analyser	each	
	Laboratory Equipment	Sysmex Analyser	each	
	Laboratory Equipment	Fish Box/ Glove box/Hepa Filter Cleateach Box	each	
<b>Office Equipment</b>				
	Office Equipment	Printer	each	
	Office Equipment	Lap top	each	
<b>Cold chain Equipment</b>				
	Cold chain Equipment	Freezer - 20 or -80°C	each	If possible
	Cold chain Equipment	Refrigerator +2 à 8° C	each	
<b>Laboratory Supplies</b>				
	Laboratory Supplies	DuPont Tyvek 400 Coveralls with Respirator Hood, cs	Case	
	Laboratory Supplies	Face Shield, Comfort Band, 100/cs	Case	
	Laboratory Supplies	GeneXpert CE-IVD 50	Case	
	Laboratory Supplies	Gown Surgery Sterile, XL 100/Case	Case	
	Laboratory Supplies	Kimberly-Clark Professional Wypall L10 Utility Wipers 18/case	Case	
	Laboratory Supplies	Lab Coats - Medium, cs	Case	
	Laboratory Supplies	Lab Coats - X-large, cs	Case	
	Laboratory Supplies	Lab Coats - Large, cs	Case	
	Laboratory Supplies	Nitrile Glove, Powder Free, Latex Free, XL, 100/pk	Case	
	Laboratory Supplies	Nitrile Glove, Powder Free, Latex Free, LG, 100/pk	Case	
	Laboratory Supplies	Nitrile Glove, Powder Free, Latex Free, Med, 100/pk	Case	
	Laboratory Supplies	Nitrile Glove, Powder Free, Latex Free, Sm, 100/pk	Case	
	Laboratory Supplies	Piccolo Amlyte 13 Panel (10 disk/Box)	Box	

	Laboratory Supplies	Piccolo Comprehensive Metabolic Panel Disk	Box	
	Laboratory Supplies	Premium 81- Place Cardboard Box, Deep Lid	case	
	Laboratory Supplies	Removable Cover Racked LTS Tips 1000UL in Racks	5 box per case	
	Laboratory Supplies	Removable Cover Racked LTS Tips 200UL in Racks	5 box per case	
	Laboratory Supplies	Removable Cover Racked LTS Tips 10UL in Racks	5 box per case	
	Laboratory Supplies	Shoe Cover IsoClean LG 100/cs	Case	
	General Supplies	Specimen collection Cups (Semen Specimen)	Case	
	Laboratory Supplies	Sysmex Poch Pack D 2x2L	Pack	
	Laboratory Supplies	Sysmex Poch Pack L 2x250 ml	Pack	
	Laboratory Supplies	Ultrapure Water 500 ml	each	
	Laboratory Supplies	K2EDTA Blood Collection Tubes, 2mL 100 /rack	rack	
	Laboratory Supplies	Gown Surgery Sterile, Large 100/case	Case	
	Laboratory Supplies	Pen Permanent Marker Blaack sharpie 10/box	Box	
	Laboratory Supplies	Thermal Results Printer Paper Piccolo Xpress, 6 rolls	Box	
	Laboratory Supplies	Sysmex Thermal Paper for POCHI-100i Analyzer, 3 rolls/pk	Pack	
	Laboratory Supplies	iSTAT CK-MB Cartridges, 25/bx	Box	
	Laboratory Supplies	iSTAT CHEM8+ Cartridges, 25/bx	Box	
	Laboratory Supplies	Sysmex Poch Pack 65XL 9L	Pack	
	Laboratory Supplies	CDIFFEND Tablets - 2XL	Tablet	
	Laboratory Supplies	Rely+On Virkon™	Pack	
	Laboratory Supplies	2mL Sarstedt Tubes,	each	

	Laboratory Supplies	3M 6969 Duct Tape Sliver,	each	
	Laboratory Supplies	3M Aura Particulate Respirator, N95 or surgical face mask	each	
	Laboratory Supplies	BD Vacutainer Plastic Blood Collection Tube w K2EDTA, 4mL	each	
	Laboratory Supplies	BD Vacutainer Plastic Blood Collection Tube W Lithium Heparin, 4mL	each	
	Laboratory Supplies	Biohazard Bag 38x48" 55GL, 100/case	each	
	Laboratory Supplies	Biohazard Bag, 20-30G, 200/case	each	
	Laboratory Supplies	Burn Boxes, 6/pk	Pack	
	Laboratory Supplies	iSTAT CG8+ Cartridge,	Box	
	Laboratory Supplies	Triple packaging	Box	
	Laboratory Supplies	Virocult 125 /case	Case	
	Laboratory Supplies	Bleach 1,5L	each	

	Laboratory Supplies	Blood collection set +older G21; or G23 240/case	each	
	Laboratory Supplies	Urine/semen collection Cups	each	
	Laboratory Supplies	Ethanol 96 % 5l	Can	