

Plasmodium falciparum *pfhrp2* and *pfhrp3* Gene Deletions in Malaria-Hyperendemic Region, South Sudan

Irene Molina-de la Fuente,¹ María José Sagrado Benito,¹ Laurence Flevaud, Janet Ousley, Harriet Akello Pasquale, Ahmed Julla, Abdirashid M. Abdi, Buai Tut Chol, Bakri Abubakr, Agustín Benito, Cristian Casademont, Carolina Nanclares, Pedro Berzosa

Pfhrp2 and *pfhrp3* gene deletions threaten the use of *Plasmodium falciparum* malaria rapid diagnostic tests globally. In South Sudan, deletion frequencies were 15.6% for *pfhrp2*, 20.0% for *pfhrp3*, and 7.5% for double deletions. Deletions were approximately twice as prevalent in monoclonal infections than in polyclonal infections.

Histidine-rich protein 2 (HRP2) is the primary target of the *Plasmodium falciparum* rapid diagnostic tests (RDT) that are a cornerstone of malaria control efforts in the high-burden, low-resource contexts in which malaria mortality is most acute (1). Increasing prevalence of *P. falciparum* parasites that do not express HRP2 or its paralogue histidine-rich protein 3 (encoded by the *pfhrp2* and *pfhrp3* genes) are affecting the accuracy of the RDTs. Infections with *pfhrp2* deletions are missed by HRP2-based RDTs much of the time; infections with double deletions (missing both *pfhrp2* and *pfhrp3* genes) are invisible to RDTs and create false-negative results. Because these deletions represent an existential threat to recent gains made in malaria control, the World

Health Organization (WHO) has emphasized the critical need for surveillance (2).

Malaria is a leading cause of illness and death in South Sudan (3), where insufficient malaria prevention activities and a lack of access to healthcare combine dangerously. Despite the geographic and strategic importance of South Sudan in East and Central Africa, the only evidence of *pfhrp2* and *pfhrp3* deletions from the country come from a single report confirming their presence in 3 travelers to Australia (4). Accurate estimates of deletions could help responders delineate factors associated with deletions, predict future RDT needs, and clarify dynamics of false negativity rates in South Sudan overall.

In 2019, in collaboration with the South Sudanese Ministry of Health, Médecins Sans Frontières began a seasonal malaria chemoprophylaxis campaign combined with an assessment of molecular markers of antimalaria drug resistance in Yambio County, a malaria-endemic region of Western Equatoria State. We describe the frequency of *pfhrp2* and *pfhrp3* and double deletions in this clinical cohort, as well as the association between deletions, demographic factors, and infection characteristics in South Sudan. This study was approved by the internal ethics review board at Médecins Sans Frontières and by the South Sudan Research Ethics Committee. All participants provided informed consent.

The Study

We analyzed finger-prick blood samples collected in 9 villages in Yambio at the end of the malaria peak (January–February 2020) from persons ≥ 6 months of age with symptomatic malaria infection positively diagnosed by pan-pLDH-based RDT (CareStart

Author affiliations: Institute of Health Carlos III, Madrid, Spain (I. Molina-de la Fuente); Alcala University, Madrid (I.M. de la Fuente, A. Benito, P. Berzosa); Médecins Sans Frontières, Barcelona, Spain (M.J.S. Benito, L. Flevaud, C. Casademont, C. Nanclares); Médecins Sans Frontières, New York, New York, USA (J. Ousley); National Malaria Control Program, Ministry of Health, Juba, South Sudan (H.A. Pasquale, A. Julla); Médecins Sans Frontières, Juba (A.M. Abdi, B.T. Chol); Médecins Sans Frontières, Nairobi, Kenya (B. Abubakr); Centro de Investigación Biomedica en Red de Enfermedades Infecciosas, Madrid (A. Benito, P.J.B. Diaz)

DOI: <https://doi.org/10.3201/eid2901.220775>

¹These authors contributed equally to this article.

Table 1. Frequency of *pfhrp2* and *pfhrp3* deletion by geographic origin of samples, South Sudan*

| Location | No isolates included | Overall <i>pfhrp2</i> deletion | | Overall <i>pfhrp3</i> deletion | |
|--------------------------|----------------------|--------------------------------|-----------------------|--------------------------------|-----------------------|
| | | No. | Frequency, % (95% CI) | No. | Frequency, % (95% CI) |
| All sites | 518 | 81 | 15.64 (12.62–19.06) | 104 | 20.08 (16.71–23.79) |
| Kasia | 50 | 6 | 12.00 (4.53–24.31) | 11 | 22.00 (11.53–35.96) |
| Yambio State Hospital | 44 | 13 | 29.55 (16.76–45.20) | 18 | 40.91 (26.34–56.75) |
| Birisi | 56 | 12 | 21.43 (11.59–34.44) | 12 | 21.43 (11.59–34.44) |
| Bureangburu | 62 | 7 | 11.29 (4.66–21.88) | 7 | 11.29 (4.66–21.88) |
| Bakiwiri | 58 | 6 | 10.34 (3.89–21.17) | 7 | 12.07 (4.99–23.30) |
| Gitikiri | 60 | 8 | 13.33 (5.94–24.59) | 14 | 23.33 (13.38–36.04) |
| Nambia | 70 | 14 | 20.00 (11.39–31.27) | 12 | 17.14 (9.18–28.03) |
| Mamboi | 51 | 5 | 9.80 (3.26–21.41) | 7 | 13.73 (5.70–26.25) |
| Masumbu | 67 | 10 | 14.93 (7.40–25.74) | 15 | 22.39 (13.11–34.22) |
| p value by χ^2 test | | 0.108 (13.089) | | 0.014 (18.988) | |

*Deletion frequency was calculated by dividing confirmed deletions by all confirmed *Plasmodium falciparum* samples included for analysis. *pfhrp2* and *pfhrp3* deletion frequency includes both single and double deletions. All analyses used a 95% CI and a p value of <0.05 for statistical significance.

Malaria PAN [pLDH] Ag RDT; Access Bio, <https://accessbio.net>). We performed malaria confirmation and speciation of 594 dried blood spot samples by multiplex PCR (5). Confirmed *P. falciparum* samples with high DNA quality (n = 518) underwent genotyping and molecular analysis for deletions in exon 2 of *pfhrp2* and *pfhrp3* (5) (Appendix, <https://wwwnc.cdc.gov/EID/article/29/1/22-0775-App1.pdf>).

De-multiplexing information was collected for all samples (Appendix). We defined multiplicity of infection (MOI) as the number of parasitic genotypes per infection and analyzed for a random subsample (n = 419) by amplifying *P. falciparum* merozoite surface protein 1 and 2 genes (*pfmsp1*, *pfmsp2*) (6). We defined

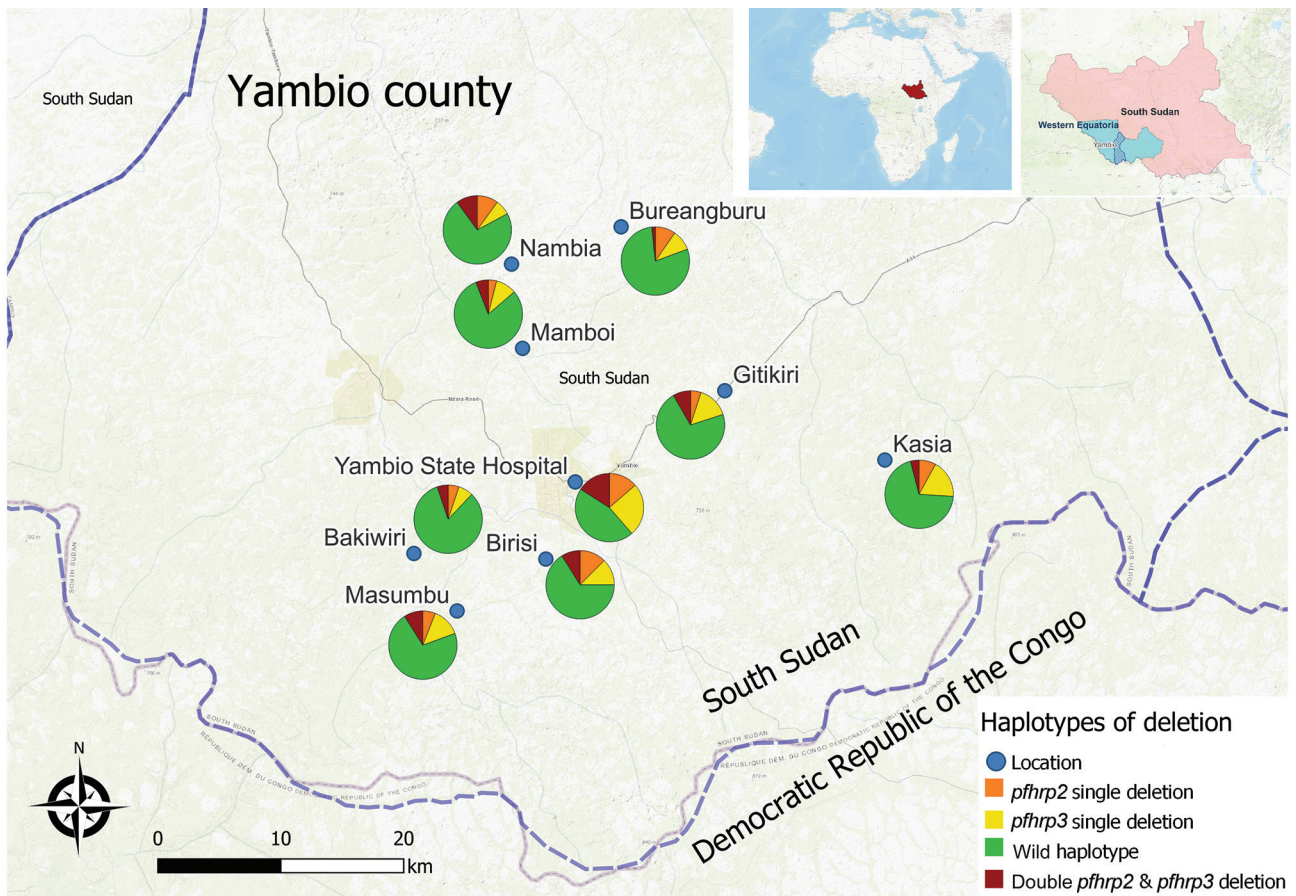


Figure 1. Frequencies of *Plasmodium falciparum* single and double *pfhrp2* and *pfhrp3* deletions in malaria-hyperendemic region, South Sudan. Color represents the type of deletion and proportion of each type of deletion and genotype. Open source QGIS software (<https://www.qgis.org>) was used to map sample collection locations. Inset map shows locations of the study area in South Sudan and of South Sudan in Africa.

Table 2. Association of age, sex, MOI, severity of infection, and previous seasonal malaria chemoprophylaxis with *pfhrp2* and *pfhrp3* deletions in malaria-hyperendemic region, South Sudan*

| Characteristic | Total no. | <i>pfhrp2</i> deletion | | <i>pfhrp3</i> deletion | | <i>pfhrp2/3</i> double deletion | | Wild-type | |
|---|-----------|------------------------|--------------------------|------------------------|--------------------------|---------------------------------|--------------------------|-----------|--------------------------|
| | | No. | Frequency, % (95% CI) | No. | Frequency, % (95% CI) | No. | Frequency, % (95% CI) | No. | Frequency, % (95% CI) |
| Age, y | | | | | | | | | |
| <5 | 159 | 28 | 17.61 (12.03–24.44) | 29 | 18.24 (12.49–24.98) | 14 | 8.81 (4.87–14.25) | 117 | 73.58 (66.02–80.25) |
| 5–14 | 196 | 24 | 12.24 (8.00–17.67) | 30 | 15.31 (10.57–21.12) | 10 | 5.10 (2.47–9.18) | 152 | 77.55 (71.06–83.19) |
| >14 | 163 | 30 | 18.40 (12.77–25.21) | 45 | 27.61 (20.90–35.14) | 15 | 9.20 (5.24–14.72) | 103 | 63.19 (55.29–70.60) |
| p value (χ^2) | | | 0.238 (2.874) | | 0.012 (8.875) | | 0.261 (2.686) | | 0.009 |
| Sex | | | | | | | | | |
| F | 271 | 44 | 16.24 (12.05–21.18) | 60 | 22.14 (17.34–27.56) | 24 | 8.86 (5.76–12.89) | 191 | 70.48 (64.66–75.84) |
| M | 247 | 37 | 14.98 (10.77–20.05) | 44 | 17.81 (13.25–23.17) | 15 | 6.07 (3.44–9.82) | 181 | 73.79 (67.30–78.69) |
| p value (χ^2) | | | 0.694 (0.154) | | 0.219 (1.507) | | 0.231 (1.438) | | 0.542 |
| MOI | | | | | | | | | |
| 1: monoclonal | 116 | 26 | 22.41 (15.19–31.09) | 37 | 31.90 (23.55–41.19) | 14 | 12.07 (6.76–19.42) | 102 | 87.93 (80.58–93.24) |
| ≥2: Polyclonal | 303 | 43 | 14.29 (10.54–18.76) | 46 | 15.28 (11.41–19.85) | 15 | 4.98 (2.82–8.09) | 288 | 95.05 (91.97–97.20) |
| p value (χ^2) | | | 0.001 (9.881) | | <0.001 (14.754) | | 0.010 (6.598) | | 0.019 |
| Severity | | | | | | | | | |
| Uncomplicated | 472 | 68 | 14.41 (11.36–17.90) | 82 | 17.37 (14.06–21.10) | 31 | 6.57 (4.51–9.19) | 359 | 73.56 (71.95–79.84) |
| Complicated | 30 | 8 | 26.67 (12.28–45.89) | 14 | 46.67 (28.34–65.67) | 5 | 16.67 (5.64–34.72) | 13 | 43.33 (25.46–62.57) |
| p value (χ^2) | | | 0.087 (2.937) | | <0.001 (14.031) | | 0.051 (3.819) | | <0.001 |
| Seasonal malaria chemoprophylaxis for children <5 y | | | | | | | | | |
| Yes | 137 | 24 | 17.52 (11.56–24.94) | 22 | 16.06 (10.35–23.24) | 11 | 8.03 (4.08–13.91) | 102 | 74.45 (66.30–81.52) |
| Not | 22 | 3 | 13.64 (2.91–34.91) | 7 | 31.82 (13.86–54.87) | 3 | 13.63 (2.91–34.91) | 15 | 68.18 (45.13–86.14) |
| p value (χ^2) | | | 0.652 (0.203) | | 0.075 (3.157) | | 0.742 (0.389) | | 0.720 (0.129) |

*Variables were considered categorical variables and the association between them and deletions were assessed using χ^2 testing. Deletions for *pfhrp2* and *pfhrp3* include both single and double deletions. All analyses used a 95% CI and a p value of ≤ 0.05 for statistical significance. MOI, multiplicity of infection.

monoclonal infection as the detection of a single PCR fragment for each locus and polyclonal infection as the detection of >1 PCR fragment for ≥ 1 locus.

Overall deletion frequency (including samples with both single and double deletions) among 518 genotyped PCR-positive samples was 15.6% for *pfhrp2* and 20.0% for *pfhrp3* (Table 1). Double deletions were found in 7.5% of isolates; patients at Yambio State Hospital had nearly twice the rate of double deletions (15.9%) as patients at all other sites (Figure 1). In 7/9 study sites, >10% of samples did not amplify *pfhrp2*; >5% of isolates were double-deleted in nearly half (4/10) of sites. *Pfhrp2* deletion rates in South Sudan were as high as or higher than the country's immediate neighbors, where reported deletion rates from specific sites have varied from 26% in Ethiopia to 19% in Kenya, 6% in the Democratic Republic of the Congo, 3% in Uganda, and <1% in Sudan (7–11).

Monoclonality was the only factor significantly associated with both *pfhrp2* and *pfhrp3* deletions and

double deletions (Table 2). Even so, the frequency of deletion among polyclonal infections was higher than expected. Severe malaria cases exhibited significantly more *pfhrp3* and double deletions than uncomplicated infections. Patients >14 years of age were more likely to harbor deletions than were patients <5 and 5–14 years of age, although the difference was significant only for *pfhrp3* (Table 2).

Unequal deletion distribution between proximate geographic zones has been previously reported (9,10), and variability in double deletion rates by study site in Yambio was notable, suggesting possible hot spots. However, the higher rates seen at Yambio State Hospital could also be explained by its significantly higher proportion of monoclonal infections (Appendix). The small sample sizes at individual sites leave conclusions about hot spots unsettled, but they underscore the importance of realistic malaria control strategies targeted to the local molecular marker landscape.

We used a statistically significant multivariable logistic regression model for total MOI, infection severity, and patient age factors for *pfhrp2*, *pfhrp3* and double deletions (Figure 2). Age was the only significant predictor of *pfhrp2* deletions (after adjusting for MOI and severity of infection), whereas age, MOI, and clinical severity were all predictors for *pfhrp3* deletions. Only MOI was a significant predictor of double deletions (Appendix).

Most research surrounding the interaction between MOI and *pfhrp2* and *pfhrp3* deletions concludes

that polyclonal infections mask deletions and lead to underestimates in deletion prevalence (12). Our results support this conclusion, finding lower MOI in Yambio associated with most deletions. In high-transmission settings, younger persons tend to have higher MOIs (13). We also found lower MOI and older patient age associated with deletions, contrasting with studies that have linked deletions to lower age but failed to consider MOI as a confounder (9).

In addition, the fitness-cost of deletions (the effects on the parasite after losing 1 of its proteins)

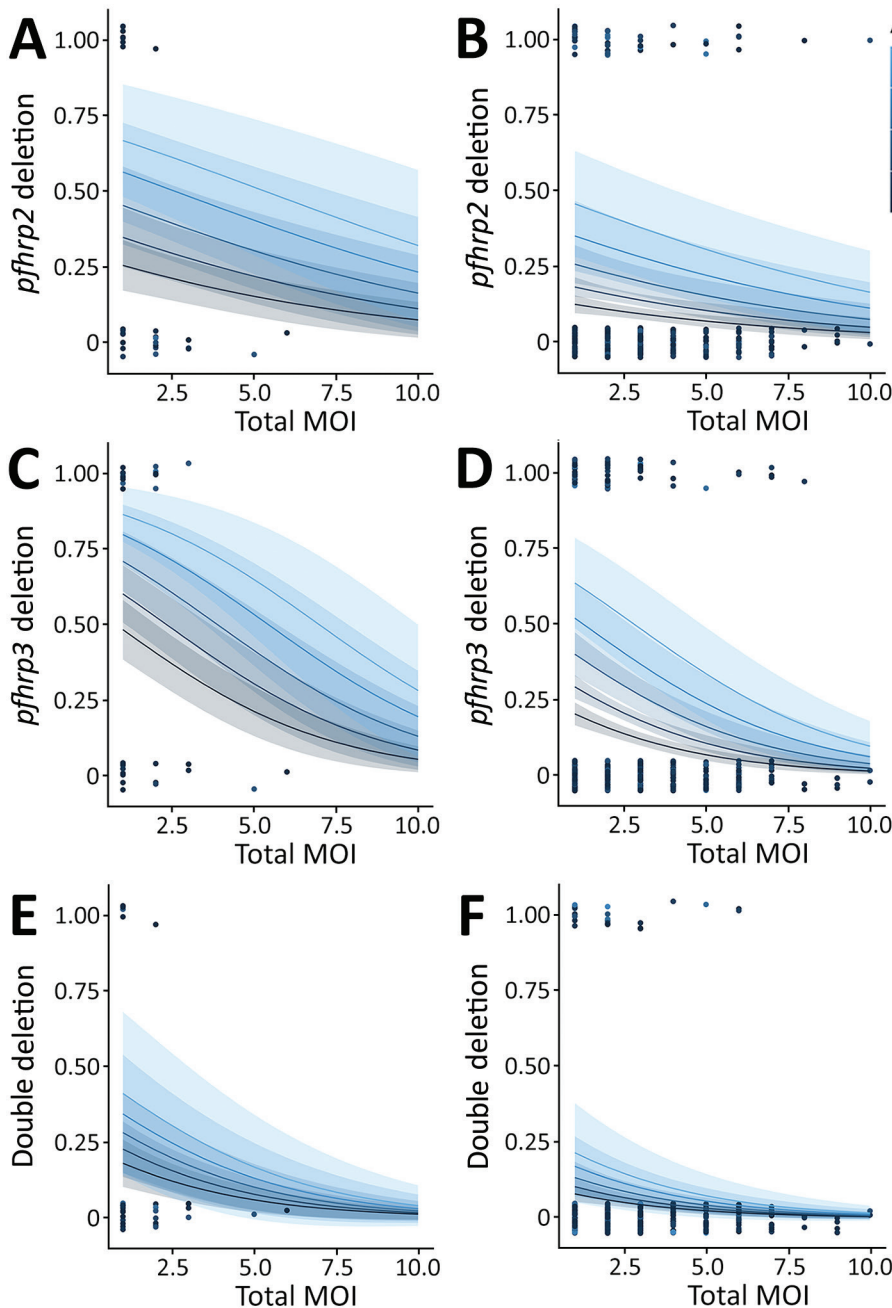


Figure 2. Multivariable regression model of *Plasmodium falciparum* *pfhrp2* deletions (A), *pfhrp3* deletions (B), and double deletions (C) in malaria-hyperendemic region, South Sudan. Panels A, C, and E indicate uncomplicated malaria; panels B, D, and F, severe malaria. The models combined 2 continuous variables: age of the patient, represented with different colors, and total MOI, represented in x-axis, with the binary response variable (presence of deletion). Probability of deletion (y-axis) was considered a binary outcome variable. The quality of the model was evaluated by the likelihood ratio method. The model was significant (p value < 0.01) for *pfhrp2* and *pfhrp3* deletion and *pfhrp2* and *pfhrp3* double deletion. Each dot represents 1 sample. MOI, multiplicity of infection.

could be another way that age, disease severity, and deletion risk interact, because milder disease has previously been associated with *pfhrp2* deletion (14) and persons acquire immunity against *P. falciparum* as they age (13). In this area, our cohort breaks with consensus, finding deletions more commonly in complicated malaria patients. We believe this difference might reflect the difficulties of diagnosing febrile disease in South Sudan, where the signs of severe malaria might be caused by other undetected infections.

Sample collection in this study occurred at the end of the high-intensity malaria transmission season, when potentially high parasitic diversity but low prevalence could favor spread of gene-deleted organisms, making deletions easier to detect (14). When interpreting *pfhrp2* deletion surveillance, the transmission period should be considered (9,15).

This study was limited because it was a secondary analysis of a study of molecular markers of antimalarial drug resistance and did not follow WHO protocols for *pfhrp2* and *pfhrp3* deletion surveillance. Consequently, the precise prevalence of *pfhrp2* and *pfhrp3* gene deletions causing false-negative results on RDTs in South Sudan was not generated to assess whether it is within the 5% threshold established by WHO (2). We also exclusively used pan *p*-LDH RDT-positive samples, preventing us from evaluating the effects of deletions on malaria diagnoses.

Conclusions

Characterizing *pfhrp2* and *pfhrp3* deletions is critical to designing effective public health strategies for malaria control. This study describes these deletions in a clinical cohort in a country with little previous endemic evidence of *pfhrp2* and *pfhrp3* deletion. Monoclonal infections were a principal predictor of deletions. We identified high levels of single and double deletions of *pfhrp2* and *pfhrp3*, which if more widely present in this or other regions of South Sudan, could seriously jeopardize HRP2-based RDT effectiveness moving forward. Future studies should be designed according to WHO protocol to produce precise estimates to measure the risk those deletions pose in South Sudan. Local variation in prevalence suggests the potential for deletion hotspots within the country and should be considered when designing malaria control strategies.

Acknowledgments

We thank the population in Yambio region for their participation. We also thank all the Médecins Sans Frontières, Ministry of Health, and partner staff involved in this project. We thank Luz Garcia, Vicenta González, and Rosario Gálvez for laboratory work with samples.

These data were previously presented in poster form at the Spanish Society of Tropical Medicine and International Health Conference in March 2022.

About the Author

Prof. Molina-de la Fuente is a PhD candidate at the University of Alcalá with Dr. Pedro Berzosa as PhD codirector. She is conducting research at the National Centre of Tropical Medicine at Institute of Health Carlos III in Spain on molecular and genomic epidemiology, malaria diagnosis evasion, and antimalaria drug resistance. Dr. Sagrado is the epidemiology adviser in Médecins Sans Frontières OCBA, where she conducts operational and clinical research in infectious and chronic diseases. She also has worked as an epidemiologist at the World Health Organization and the Spanish National Center of Epidemiology's Institute of Health Carlos III.

References

- Rogier E, McCaffery JN, Nace D, Svigel SS, Assefa A, Hwang J, et al. *Plasmodium falciparum* p_{fh}rp2 and p_{fh}rp3 gene deletions from persons with symptomatic malaria infection in Ethiopia, Kenya, Madagascar, and Rwanda. *Emerg Infect Dis.* 2022;28:608–16. <https://doi.org/10.3201/eid2803.211499>
- World Health Organization. Master protocol for surveillance of p_{fh}rp2/3 deletions and biobanking to support future research [cited 2022 Dec 13]. <https://apps.who.int/iris/bitstream/handle/10665/331197/9789240002050-eng.pdf>
- Republic of South Sudan Ministry of Health. Malaria Strategic Plan 2021 – 2025. 2020.
- Prosser C, Gresty K, Ellis J, Meyer W, Anderson K, Lee R, et al. *Plasmodium falciparum* histidine-rich protein 2 and 3 gene deletions in strains from Nigeria, Sudan, and South Sudan. *Emerg Infect Dis.* 2021;27:471–9. <https://doi.org/10.3201/eid2702.191410>
- Berzosa P, González V, Taravillo L, Mayor A, Romay-Barja M, García L, et al. First evidence of the deletion in the p_{fh}rp2 and p_{fh}rp3 genes in *Plasmodium falciparum* from Equatorial Guinea. *Malar J.* 2020;19:99. <https://doi.org/10.1186/s12936-020-03178-9>
- Sondo P, Derra K, Rouamba T, Nakanabo Diallo S, Taconet P, Kazienga A, et al. Determinants of *Plasmodium falciparum* multiplicity of infection and genetic diversity in Burkina Faso. *Parasit Vectors.* 2020;13:427. <https://doi.org/10.1186/s13071-020-04302-z>
- Feleke SM, Reichert EN, Mohammed H, Brhane BG, Mekete K, Mamo H, et al. *Plasmodium falciparum* is evolving to escape malaria rapid diagnostic tests in Ethiopia. *Nat Microbiol.* 2021;6:1289–99. <https://doi.org/10.1038/s41564-021-00962-4>
- Beshir KB, Sepúlveda N, Bharmal J, Robinson A, Mwanguzi J, Busula AO, et al. *Plasmodium falciparum* parasites with histidine-rich protein 2 (p_{fh}rp2) and p_{fh}rp3 gene deletions in two endemic regions of Kenya. *Sci Rep.* 2017;7:14718. <https://doi.org/10.1038/s41598-017-15031-2>
- Parr JB, Verity R, Doctor SM, Janko M, Carey-Ewend K, Turman BJ, et al. P_{fh}rp2-deleted *Plasmodium falciparum* parasites in the Democratic Republic of the Congo: a national cross-sectional survey. *J Infect Dis.* 2017;216:36–44.

10. Agaba BB, Anderson K, Gresty K, Prosser C, Smith D, Nankabirwa JI, et al. Molecular surveillance reveals the presence of pfhrrp2 and pfhrrp3 gene deletions in *Plasmodium falciparum* parasite populations in Uganda, 2017–2019. *Malar J*. 2020;19:300. <https://doi.org/10.1186/s12936-020-03362-x>
11. Boush M, Djibrine M, Mussa A, Talib M, Maki A, Mohammed A, et al. *Plasmodium falciparum* isolate with histidine-rich protein 2 gene deletion from Nyala City, Western Sudan. *Sci Rep*. 2020;10:12822.
12. Grignard L, Nolder D, Sepúlveda N, Berhane A, Mihreteab S, Kaaya R, et al. A novel multiplex qPCR assay for detection of *Plasmodium falciparum* with histidine-rich protein 2 and 3 (pfhrp2 and pfhrp3) deletions in polyclonal infections. *EBioMedicine*. 2020;55:102757. <https://doi.org/10.1016/j.ebiom.2020.102757>
13. Pinkevych M, Petravic J, Bereczky S, Rooth I, Färnert A, Davenport MP. Understanding the relationship between *Plasmodium falciparum* growth rate and multiplicity of infection. *J Infect Dis*. 2015;211:1121–7. <https://doi.org/10.1093/infdis/jiu561>
14. Watson OJ, Slater HC, Verity R, Parr JB, Mwandagalirwa MK, Tshefu A, et al. Modelling the drivers of the spread of *Plasmodium falciparum* hrp2 gene deletions in sub-Saharan Africa. *eLife*. 2017;6:e25008. <https://doi.org/10.7554/eLife.25008>
15. Koita OA, Ndiaye J, Nwakanma D, Sangare L, Ndiaye D, Joof F. Seasonal changes in the frequency of false negative rapid diagnostic tests based on histidine rich protein 2 (HRP2). *Am J Trop Med Hyg*. 2013;80:1.

Address for correspondence: Maria Jose Sagrado Benito, Médecins Sans Frontières–Barcelona, Carrer de Zamora, 54, 08005 Barcelona, Spain; email: mariajose.sagrado@barcelona.msf.org

February 2022

Vectorborne Infections

- Viral Interference between Respiratory Viruses
- Novel Clinical Monitoring Approaches for Reemergence of Diphtheria Myocarditis, Vietnam
- Clinical and Laboratory Characteristics and Outcome of Illness Caused by Tick-Borne Encephalitis Virus without Central Nervous System Involvement
- Role of *Anopheles* Mosquitoes in Cache Valley Virus Lineage Displacement, New York, USA
- Invasive *Burkholderia cepacia* Complex Infections among Persons Who Inject Drugs, Hong Kong, China, 2016–2019
- Comparative Effectiveness of Coronavirus Vaccine in Preventing Breakthrough Infections among Vaccinated Persons Infected with Delta and Alpha Variants
- Effectiveness of mRNA BNT162b2 Vaccine 6 Months after Vaccination among Patients in Large Health Maintenance Organization, Israel
- Comparison of Complications after Coronavirus Disease and Seasonal Influenza, South Korea
- Epidemiology of Hospitalized Patients with Babesiosis, United States, 2010–2016
- Rapid Spread of Severe Fever with Thrombocytopenia Syndrome Virus by Parthenogenetic Asian Longhorned Ticks



- Wild Boars as Reservoir of Highly Virulent Clone of Hybrid Shiga Toxigenic and Enterotoxigenic *Escherichia coli* Responsible for Edema Disease, France
- Public Acceptance of and Willingness to Pay for Mosquito Control, Texas, USA
- Widespread Detection of Multiple Strains of Crimean-Congo Hemorrhagic Fever Virus in Ticks, Spain
- West Nile Virus Transmission by Solid Organ Transplantation and Considerations for Organ Donor Screening Practices, United States

- Serial Interval and Transmission Dynamics during SARS-CoV-2 Delta Variant Predominance, South Korea
- Postvaccination Multisystem Inflammatory Syndrome in Adult with No Evidence of Prior SARS-CoV-2 Infection
- Postmortem Surveillance for Ebola Virus Using OraQuick Ebola Rapid Diagnostic Tests, Eastern Democratic Republic of the Congo, 2019–2020
- SARS-CoV-2 Seroprevalence before Delta Variant Surge, Chattogram, Bangladesh, March–June 2021
- SARS-CoV-2 B.1.619 and B.1.620 Lineages, South Korea, 2021
- *Neisseria gonorrhoeae* FC428 Subclone, Vietnam, 2019–2020
- Zoonotic Infection with Oz Virus, a Novel Thogotovirus
- SARS-CoV-2 Cross-Reactivity in Prepandemic Serum from Rural Malaria-Infected Persons, Cambodia
- Tonate Virus and Fetal Abnormalities, French Guiana, 2019
- *Babesia crassa*–Like Human Infection Indicating Need for Adapted PCR Diagnosis of Babesiosis, France
- Clinical Features and Neurodevelopmental Outcomes for Infants with Perinatal Vertical Transmission of Zika Virus, Colombia

**EMERGING
INFECTIOUS DISEASES®**

To revisit the February 2022 issue, go to:
<https://wwwnc.cdc.gov/eid/articles/issue/28/2/table-of-contents>

Plasmodium falciparum *pfhrp2* and *pfhrp3* Gene Deletions in Malaria-Hyperendemic Region, South Sudan

Appendix

Appendix Table 1. Haplotypes of *pfhrp2* and *pfhrp3* deletion by geographic origin of the samples*

| Location | Total samples | Isolates Included, N | Single - <i>pfhrp2</i> deletion | | Single - <i>pfhrp3</i> deletion | | <i>pfhrp2</i> and <i>pfhrp3</i> double deletion | | Wild-type parasites | |
|-----------------------|---------------|----------------------|---------------------------------|--------------------------|---------------------------------|---------------------------|---|-------------------------|---------------------|--------------------------|
| | | | n | F (CI 95%) | n | F (CI 95%) | n | F (CI 95%) | n | F (CI 95%) |
| All sites | 594 | 518 | 42 | 8.11% (5.91 – 10.80) | 65 | 12.54% (9.82 – 15.71) | 39 | 7.53 (5.41 – 10.15) | 372 | 71.81 (67.73 – 75.65) |
| Kasia | 60 | 50 | 4 | 8.00% (2.22 – 19.23) | 9 | 18.00% (8.58 – 31.44) | 2 | 4.00 (0.49 – 13.71) | 35 | 70.00 (55.39 – 82.14) |
| Yambio State Hospital | 49 | 44 | 6 | 13.64% (5.17 – 27.35) | 11 | 25.00% (13.19 – 40.34) | 7 | 15.91 (6.64 – 30.07) | 20 | 45.45 (30.39 – 61.15) |
| Birisi | 62 | 56 | 7 | 12.50% (5.18 – 24.07) | 7 | 12.50% (5.18 – 24.07) | 5 | 8.93 (2.96 – 19.62) | 37 | 66.07 (52.19 – 78.19) |
| Bureangburu | 68 | 62 | 6 | 9.68% (3.63 – 19.88) | 6 | 9.68% (3.63 – 19.88) | 1 | 1.61 (0.04 – 8.66) | 49 | 79.03 (66.82 – 88.34) |
| Bakiwiri | 63 | 58 | 3 | 5.17% (1.08 – 14.38) | 4 | 6.70% (1.91 – 16.73) | 3 | 5.17 (1.08 – 14.38) | 48 | 82.76 (70.57 – 91.41) |
| Gitikiri | 66 | 60 | 3 | 5.00% (1.04 – 13.92) | 9 | 15.00% (7.10 – 26.57) | 5 | 8.33 (2.76 – 18.38) | 43 | 71.67 (58.56 – 82.55) |
| Nambia | 79 | 70 | 7 | 10.00% (4.12 – 19.52) | 5 | 7.14% (2.36 – 5.89) | 7 | 10.00 (4.14 – 19.52) | 51 | 72.86 (60.90 – 82.80) |
| Mamboi | 57 | 51 | 2 | 3.92% (0.48 – 13.49) | 5 | 9.80% (3.26 – 21.41) | 3 | 5.88 (1.23 – 16.24) | 41 | 80.39 (66.88 – 90.18) |
| Masumbu | 90 | 67 | 4 | 5.97% (1.65 – 14.59) | 9 | 13.43% (6.33 – 23.97) | 6 | 8.96 (3.36 – 18.48) | 48 | 71.64 (59.31 – 81.99) |
| p-value (χ^2) | | | 0.55 (6.856) | | 0.137 (12.315) | | 0.256 (10.134) | | 0.006 (21.3) | |

*Deletion frequency was calculated by dividing confirmed deletions of each haplotype by all confirmed *P. falciparum* samples included for analysis. All analyses used a 95% confidence level and a p-value of ≤ 0.05 for statistical significance.

Appendix Table 2. Data about the samples included in *pfhrp2* and *pfhrp3* genotyping and in the subsample for *pfmsp1* and *pfmsp2* genotyping.

| Characteristic | All samples | Samples included for <i>pfmsp1</i> and <i>pfmsp2</i> genotyping |
|-------------------|-------------|---|
| Age group | | |
| <5 y | 159 | 110 |
| 5–14 | 196 | 144 |
| >14 | 163 | 124 |
| Sex | | |
| F | 271 | 201 |
| M | 247 | 177 |
| pan-LDH diagnosis | | |
| Negative | 14 | 7 |
| Positive | 504 | 371 |
| Malaria type | | |
| Severe | 30 | 29 |
| Uncomplicated | 472 | 349 |

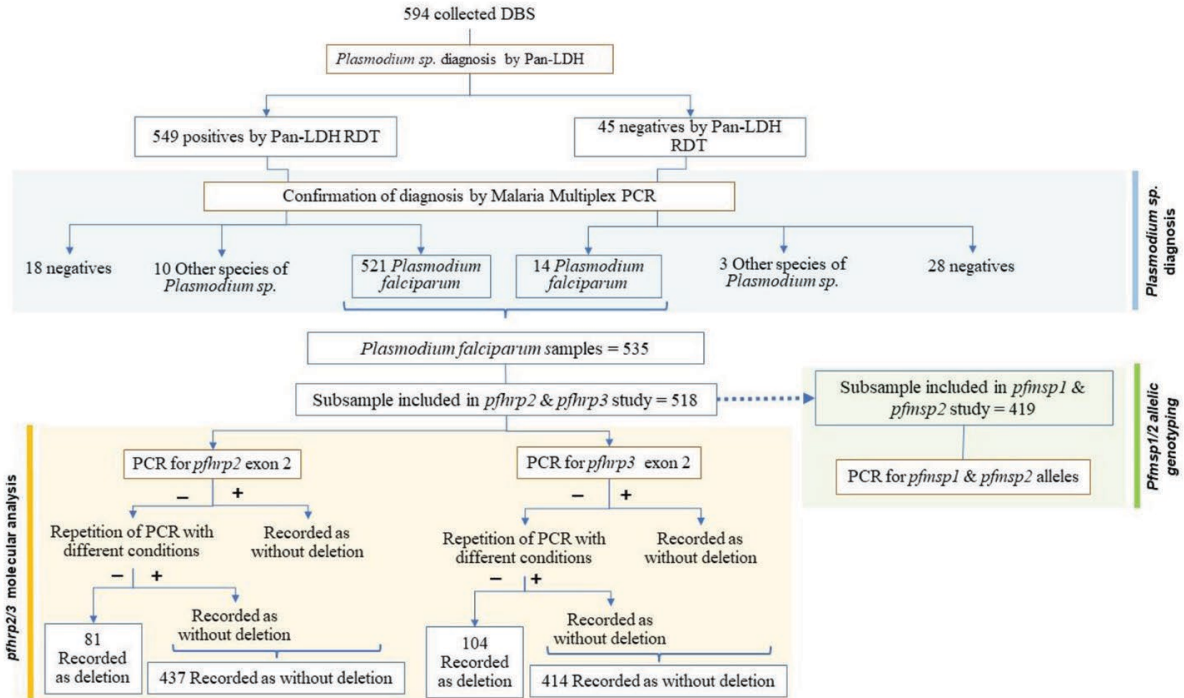
Appendix Table 3. Association between *pfhrp2* and *pfhrp3* deletion and population, parasite and infection factors

| Factor | <i>Pfhrp2</i> deletion, n = 58 | | <i>Pfhrp3</i> deletion, n = 83 | | <i>Pfhrp2/3</i> deletion, n = 29 | |
|---|--------------------------------|---------|--------------------------------|---------|----------------------------------|---------|
| | OR (95% CI) | p value | OR (95% CI) | p value | OR (95% CI) | p value |
| Age | 1.02 (1.00 - 1.04) | 0.030 | 1.02 (1.01 - 1.04) | 0.012 | 1.01 (0.98 - 1.04) | 0.317 |
| MOI | 0.85 (0.71 - 1.00) | 0.071 | 0.73 (0.61 - 0.87) | <0.001 | 0.73 (0.54 - 0.95) | 0.034 |
| Severity | 2.37 (0.92 - 5.63) | 0.058 | 3.64 (1.62 - 8.17) | 0.002 | 2.54 (0.78 - 7.03) | 0.091 |
| Model | 0.009 | | 0.001 | | 0.014 | |
| Hosmer-Lemeshow Goodness of Fit p value | 0.410 | | 0.383 | | 0.328 | |

*MOI was calculated first for each gene (*pfmsp1* and *pfmsp2*) as the total number of alleles found in any of the locus of each gene (K1, RO33, and MAD20 for *pfmsp1* and 3D7 and FC27 for *pfmsp2*), then the MOI total was reported as the maximum MOI value from both *pfmsp1* and *pfmsp2*. The model was built with a sample size of 419 samples. Each model was also tested for accuracy using Hosmer-Lemeshow Goodness of Fit, the interpretation of this estimate established that if there are not significant difference between the estimated and the observed data, then the model fits well. MOI, multiplicity of infection; OR, odds ratio.

Appendix Table 4. Multiplicity of infection by location and group of age

| Characteristic | N samples | Monoclonal infections (%) | Polyclonal infections (%) | MOI range | Mean MOI |
|-----------------------|-----------|---------------------------|---------------------------|-----------|----------|
| Overall | | 27.82 | 72.18 | 1 - 10 | 1.93 |
| Location | | | | | |
| Bakiwiri | 51 | 31.37 | 68.63 | 1 - 9 | 1.95 |
| Birisi | 54 | 22.22 | 77.77 | 1 - 10 | 2.01 |
| Gitikiri | 58 | 22.42 | 77.59 | 1 - 6 | 2.01 |
| Kasia | 46 | 26.09 | 73.91 | 1 - 9 | 1.91 |
| Masumbu | 51 | 27.45 | 72.55 | 1 - 8 | 1.96 |
| Mamboi | 49 | 24.49 | 75.51 | 1 - 10 | 2.07 |
| Nambia | 70 | 20.00 | 80.00 | 1 - 7 | 2.14 |
| Yambio State Hospital | 40 | 57.50 | 42.50 | 1 - 5 | 1.42 |
| p value | | 0.002 | | | 0.161 |
| Age group, y | | | | | |
| <5 | 127 | 25.98 | 74.02 | 1 - 9 | 1.91 |
| 5-14 | 164 | 26.22 | 73.78 | 1 - 10 | 2.30 |
| >14 | 128 | 31.35 | 68.75 | 1 - 10 | 1.81 |
| p value | | 0.557 | | | 0.022 |



Appendix Figure. Methodological flow scheme. Pf-LDH – RDT diagnosis was confirmed by Nested Multiplex PCR, distinguishing *P. falciparum*, *P. vivax*, *P. ovale* and *P. malariae*. All the *P. falciparum* samples were amplified for *pf dhps*, *pf dhfr pfmdr1*, *pf crt* and quantification by 18S, if they present any difficulty for amplification or a really low parasitemia they were excluded for deletion analysis. Finally, 17 samples were excluded and 518 included for deletion analysis. On the included *P. falciparum* samples, four independent PCRs were run to detect deletions in exon 1–2 and exon 2 of *pfrp2* and *pfrp3*. The deletion of any exon was confirmed with the absence of amplification after three PCR repetitions. Then a random subsample of 433 were included for allelic diversity analysis using *pfmsp1* and *pfmsp2* PCRs.