

Unique Clindamycin-Resistant *Clostridioides difficile* Strain Related to Fluoroquinolone-Resistant Epidemic BI/RT027 Strain

Andrew M. Skinner, Laurica Petrella, Farida Siddiqui, Susan P. Sambol, Christopher A. Gulvik, Dale N. Gerding, Curtis J. Donskey, Stuart Johnson

During a surveillance study of patients in a long-term care facility and the affiliated acute care hospital in the United States, we identified a *Clostridioides difficile* strain related to the epidemic PCR ribotype (RT) 027 strain associated with hospital outbreaks of severe disease. Fifteen patients were infected with this strain, characterized as restriction endonuclease analysis group DQ and RT591. Like RT027, DQ/RT591 contained genes for toxin B and binary toxin CDT and a *tcdC* gene of identical sequence. Whole-genome sequencing and multilocus sequence typing showed that DQ/RT591 is a member of the same multilocus sequence typing clade 2 as RT027 but in a separate cluster. DQ/RT591 produced a similar cytopathic effect as RT027 but showed delayed toxin production in vitro. DQ/RT591 was susceptible to moxifloxacin but highly resistant to clindamycin. Continued surveillance is warranted for this clindamycin-resistant strain that is related to the fluoroquinolone-resistant epidemic RT027 strain.

As the leading cause of healthcare-associated infectious diarrhea and colitis, *Clostridioides* (formerly *Clostridium*) *difficile* continues to affect patients in hospitals and extended-care facilities in the United States (1–3). Among the numerous *C. difficile* strains, none have been more important to the healthcare community at large than the strain characterized as toxinotype III, restriction endonuclease analysis (REA) group BI, PCR ribotype (RT) 027, and sequence type (ST) 1, also known as pulsed-field gel electrophoresis type NAP1

(4,5). Because the BI/RT027 strain has been associated with numerous healthcare facility outbreaks and an increasing number of illnesses and deaths, it has been called hypervirulent (6). Factors that potentially contribute to increased virulence for this strain include increased sporulation, particular DNA gyrase mutations, the ability to survive in hostile environments, and increased toxin production (7–9).

The pathogenicity locus of BI/RT027 includes a characteristic 18-bp deletion and a single-base deletion at position 117 of the *tcdC* gene (4). These mutations result in a truncated TcdC protein that is rendered nonfunctional, leading to a lack of regulation of the *tcdA* and *tcdB* genes and potentially increased toxin A and B production (4). Virulence may be further affected by the binary toxin (CDT), which is coded for by genes located outside the pathogenicity locus, and its proposed role is to increase adherence of the bacterium to the epithelium (4,10).

Presumptive detection of the BI/RT027 strain by the Xpert *C. difficile* EPI assay (Cepheid, <https://www.cephid.com>) is based on PCR amplification of targets, including the deletion at position 117 within *tcdC* and sequences within *tcdB* and the binary CDT genes (11). During the past 10 years, non-RT027 strains have emerged that test positive by this assay because they have the same or similar gene targets (12,13). Several of these non-RT027 strains also have been associated with increased numbers of illnesses and deaths, suggesting that the gene targets for this assay may be related to increased virulence (12–14).

In 2012, during a surveillance study at 2 US Veteran Affairs (VA) long-term care facilities (LTCFs) and their affiliated acute care facilities, we detected a clonal *C. difficile* outbreak at 1 of the LTCFs and the affiliated acute care facility (15). The organism was initially identified as the epidemic strain BI/RT027 after it tested positive by Xpert *C. difficile* Epi assay

Author affiliations: Edward Hines, Jr. VA Hospital, Hines, Illinois, USA (A.M. Skinner, L. Petrella, F. Siddiqui, D.N. Gerding, S. Johnson); Loyola University Medical Center, Maywood, Illinois, USA (A.M. Skinner, S. Johnson); Centers for Disease Control and Prevention, Atlanta, Georgia, USA (C.A. Gulvik); Louis Stokes VA Hospital, Cleveland, Ohio, USA (C.J. Donskey); Case Western Reserve University, Cleveland (C.J. Donskey)

DOI: <https://doi.org/10.3201/eid2602.181965>

(15). However, further analysis identified this strain as REA group DQ and RT591. We report the microbiological and molecular characterization of this strain and the clinical findings of the infected patients.

Methods

During February 2012–August 2012, we obtained swab specimens from the perirectal area of asymptomatic LTCF patients at 2 VA facilities in Cleveland, Ohio, and Chicago, Illinois, USA, as part of a validation study comparing PCR using the Xpert *C. difficile* Epi assay and culture (15). In addition, fecal specimens from symptomatic patients with *C. difficile* infection (CDI) were cultured for *C. difficile* as part of a larger surveillance study of *C. difficile* in each LTCF and the associated acute care facility at these 2 sites (16). Specimens obtained from the perirectal area using BD BBL CultureSwabs (Becton Dickinson, <https://www.bd.com>) and submitted fecal specimens from symptomatic patients were cultured anaerobically on selective media as previously described (15). We reviewed medical records to obtain information about demographics, medical conditions, medications, CDI treatment, and outcomes. The severity of CDI and determination of initial versus recurrent cases were classified in accordance with the Infectious Diseases Society of America and Society for Healthcare Epidemiology of America *C. difficile* infection guidelines (17). The institutional review board of each hospital approved the study protocol.

REA

Recovered *C. difficile* isolates were first subjected to typing by REA. Using the methods provided by Clabots et al. (18), total cellular DNA was purified and subjected to *Hind*III restriction enzyme digestion and electrophoresis. The resulting banding patterns were then compared with a known database. All isolates representing a newly recognized REA type that corresponded to a presumptive BI/RT027 identified by the Xpert *C. difficile* Epi assay were subjected to PCR ribotyping, whole-genome sequencing (WGS), multilocus sequence typing (MLST), and PCR amplification of *cdtA*, *cdtB*, *tcdA*, and *tcdB* and an 18-bp deletion in *tcdC*. Sequencing of *tcdC* (1 isolate), toxinotyping (1 isolate), toxin production in vitro (1 isolate per REA strain group), and antimicrobial susceptibility testing (6 isolates) were performed on selected isolates.

PCR Ribotyping

We characterized recovered *C. difficile* isolates using high-resolution capillary gel electrophoresis–based PCR ribotyping. We analyzed these isolates against

a library of standard profiles, as described previously in the internationally validated consensus protocol from Fawley et al. (19).

Gene Analysis of Binary Toxin CDT, Toxins A and B, and the Negative Toxin Regulator

We conducted PCR amplification of *cdtA*, *cdtB*, *tcdA*, and *tcdB* and an 18-bp deletion in *tcdC* on all isolates identified as BI/RT027 and DQ/RT591 as previously described (20). In addition, by using primers previously described by Rupnik et al. (21), we amplified *cdtB* and *tcdB* by PCR to confirm the presence of CDT and toxin B on a representative DQ/RT591 isolate followed by amplification and sequencing of the *tcdC* gene. A full-length *tcdC* PCR was performed using the following primers to produce a 910-bp product: forward primer ACTGTTTATTTGCAAT-TATAAAAACATCT; reverse primer TTACTT-TATTTTGTAATAATTATGCTTAGGG. PCR amplicons were gel purified, sequenced, and compared with BI and strain 630.

Toxinotyping

We conducted toxinotyping on a representative DQ/RT591 isolate by performing restriction fragment-length polymorphism PCR of the B1 and A3 fragment. We assessed for variation in the first 3-kbp of *tcdB* and a repetitive 3-kbp fragment in *tcdA* (21).

WGS and MLST

We conducted WGS using a Nextera kit (Illumina, <https://www.illumina.com>) to prepare genomic DNA libraries and sequenced the RT591 organism using an Illumina MiSeq producing 2×250-bp read sets in accordance with the manufacturer's protocols. Reads were filtered with SolexaQA++ 3.1 by dynamic trimming bases lower than Phred 30 and discarding reads <50-bp long. (22) We then assembled high-fidelity filtered reads into contigs at least 500 bp long with SPAdes 3.6.2 (22,23). Isolates that met the following 5 molecular testing criteria (positive for *cdtA*, *cdtB*, *tcdA*, and *tcdB* and an 18-bp deletion in *tcdC*) were then analyzed by genomewide average nucleotide identity (ANI). We computed pairwise ANI values between genomes from NUCmer v3.1 alignments aided by PyANI version 0.1 (24). Pairwise identity values were sorted into a 2-dimensional matrix with pandas version 0.15.2 in Python, and a heatmap of identity values with hierarchical clustering linkages was visualized with gplots version 2.16.0 in R (25). DQ/RT591 genomes also had single-nucleotide polymorphisms (SNPs) identified with Parsnp version 1.3.

We retrieved all STs on PubMLST's webserver (<https://pubmlst.org/cdifficile>) (351 as of June 28, 2016) to compare distances among STs. The database of profiles was based on the first scheme created for *C. difficile*, which uses the loci of *adk*, *atpA*, *dxr*, *glyA*, *recA*, *sodA*, and *tpi*. Of the 3,501-bp length for each ST, 524 positions were found to have a nucleotide variant among the 351 STs. The variable sites were given to RAxML version 8.1.17 with the generalized time-reversible substitution model, and the tree was visualized in Figtree version 1.4.2 (26).

In Vitro Toxin Production and Antimicrobial Susceptibility Testing

We determined toxin production on *C. difficile* isolate supernatants of representative isolates of 5 different REA group strains after 24, 48, and 72 hours of growth in brain heart infusion broth media (27). Toxin concentrations were determined by enzyme immunoassay (*C. difficile* toxA/B II EIA; TechLab, <https://www.techlab.com>) and interpolation from a standard curve using a toxin A standard of known concentration. Assays were performed in triplicate on a representative DQ isolate and compared with supernatants from toxigenic strains BI (RT027), J (RT001), AF (RT244), and a nontoxigenic strain, REA group T. A qualitative cytotoxin analysis was performed on the representative isolate supernatants using human fibroblast cells (Bartels cytotoxicity assay; Trinity Biotech, <https://trinitylifesciences.com>). We determined antimicrobial susceptibilities by Etest (bioMérieux, <https://www.biomerieux-usa.com>) for moxifloxacin, ceftriaxone, azithromycin, and clindamycin on taurocholate fructose agar plates (28,29). We confirmed the susceptibility results for moxifloxacin and clindamycin by testing 5 additional unique strains of BI and DQ recovered from patients at the VA site where the DQ outbreak occurred. We used Clinical and Laboratory Standards Institute guidelines for resistance cut-off values (30,31).

Statistical Analysis

We compared characteristics and outcomes of patients colonized or infected with BI/NAP1/027 and other strain types with those of patients colonized or infected with DQ/591 strains. Student *t*-test was used for normally distributed data and Fisher exact test for categorical data. We analyzed data using SPSS Statistics 10.0 (IBM, <https://www.ibm.com>).

Results

REA group BI strains were the most common strains recovered from both VA sites and accounted

for 33 (40%) of the 83 isolates at the Cleveland site. In addition, 16 (19%) of the isolates from 15 Cleveland patients were identified as REA strain DQ, even though the corresponding Xpert *C. difficile* EPI assay results indicated the presence of the NAP1 strain (i.e., REA group BI). No DQ strains were found at the Chicago site.

We compared baseline characteristics and outcomes of the 15 patients with fecal cultures positive for the DQ strain with those of the 22 patients with BI/NAP1/027 strains and 27 with other strain types (Table). Ten (67%) of the 15 patients with the DQ strain were LTCF residents, 4 (27%) were on the spinal cord injury unit, and 1 was hospitalized on a medical ward. Of the 7 patients with CDI caused by DQ strains, 3 (43%) met criteria for severe CDI, but none had fulminant CDI. All 7 CDI cases were healthcare associated; 3 of these patients had onset in the hospital, and 4 had onset in the LTCF. In all patients with CDI caused by DQ strains, diarrhea resolved with therapy, but CDI recurred in 3. Patients colonized or infected with DQ strains were significantly more likely than those with BI/NAP1/027 or other strain types to be LTCF residents and to have received antimicrobial drugs during the past 90 days. Patients with other strain types were significantly less likely than patients with DQ strains to have a recent intensive care unit admission, to have healthcare-associated CDI, or to die within 6 months after the CDI diagnosis.

The *Hind*III REA banding patterns differed between the DQ and BI strains (Figure 1, panel A). The PCR ribotype patterns were more similar, except for the RT591 pattern (DQ), which was missing 2 major bands present in RT027 pattern (BI) (Figure 1, panel B).

PCR amplification of *tcdB* and *cdtB* in a representative DQ isolate indicated the presence of genes for toxin B and binary toxin CDT, consistent with the profile of the epidemic BI/RT027 strain (data not shown). In addition, amplification and sequencing of the *tcdC* gene showed complete alignment with *tcdC* from a reference BI strain, both of which contained an 18-bp deletion from positions 316 to 333 and a single base deletion at position 117 that resulted in a stop codon at position 196, unlike the reference *C. difficile* strain, 630 (data not shown) (32). The similarities to the BI/RT027 strain were further validated because toxinotyping indicated the DQ/591 strain was toxinotype III (data not shown).

WGS and MLST results showed that, although the strains are closely related and reside within the same clade (MLST clade 2), they form a separate cluster (Figure 2). ANI showed a clear separation of the BI/027 and DQ/591 isolates at the whole genome level

Table. Comparison of baseline characteristics and outcomes of patients colonized or infected with *Clostridioides difficile* DQ/591, BI/027, and other strain types in study of *C. difficile* at 2 US Veteran Affairs long-term care facilities and their affiliated acute care facilities*

Characteristic	Strain type		
	DQ/591, n = 15	BI/027, n = 22	Other, n = 27
Age, y (range)	67.9 (49–85)	68.9 (57–89)	67.4 (48–91)
Sex			
M	15 (100)	22 (100)	26 (96)
F	0	0	1 (4)
Residence			
Long-term care facility	10 (67)	7 (32)†	8 (30)†
Spinal cord injury unit	4 (27)	8 (36)	7 (26)
Drugs received			
Proton pump inhibitor	12 (80)	11 (50)	19 (70)
Antimicrobial drug treatment in past 90 d	15 (100)	14 (64)†	15 (56)†
Fluoroquinolone in past 90 d	5 (33)	6 (27)	6 (22)
Clindamycin in past 90 d	1 (7)	0	0
Azithromycin in past 90 d	1 (7)	0	0
Intensive care unit admission in past 30 d	4 (27)	4 (18)	0†
Medical conditions			
Chronic lung disease	6 (40)	4 (18)	5 (19)
Cancer	5 (33)	5 (23)	5 (19)
Major surgery in past 90 d	3 (20)	1 (4.5)	5 (19)
End-stage renal disease	3 (20)	4 (18)	4 (15)
Disease classification, no. (%)			
<i>C. difficile</i> infection	7 (47)	13 (59)	16 (59)
Severe	3 (43)	3 (23)	1 (6)
Fulminant	0	0	0
Recurrent	3 (43)	2 (15)	4 (25)
Healthcare-associated	7 (100)	11 (85)	8 (50)†
Asymptomatic carrier	8 (53)	9 (41)	11 (41)
Died within 6 mo after CDI diagnosis	4 (27)	6 (27)	1 (4)†

*Values for BI/027 and for other strain types were compared with values for DQ/591 strains.

† $p < 0.05$.

(Appendix Figure 1, <https://wwwnc.cdc.gov/EID/article/26/2/18-1965-App1.pdf>). By MLST analysis, the DQ/RT591 isolates were ST41, whereas BI/RT027 were ST1. Although the STs are closely related, there is a 4-SNP separation in the MLST loci.

Supernatant from the DQ/RT591 strain produced typical cellular rounding on fibroblasts similar to BI/RT027, whereas the AF/RT244 strain produced a different phenotype, clumping and rounding of cells (Appendix Figure 2). Strain AF/RT244 is also related to RT027 and was responsible for an outbreak of severe disease in Australia (12). DQ/RT591 showed minimal toxin production in vitro at 24 hours; by 48 hours, toxin levels were similar to those of strain J/RT001 but still less than levels produced by BI/RT027 (Figure 3).

The DQ/RT591 strain was highly resistant to clindamycin (MIC >256 µg/mL) and azithromycin (MIC >256 µg/mL) but was susceptible to moxifloxacin (MIC range 1–2 µg/mL) and ceftriaxone (MIC 16 µg/mL). BI/RT027 was resistant to moxifloxacin (MIC >32 µg/mL) and azithromycin (MIC >256 µg/mL) and variably resistant to clindamycin (MIC range 6–32 µg/mL). Furthermore, WGS revealed that all DQ/RT591 isolates contained a variant *ermB* sequence known to confer clindamycin resistance (33).

Discussion

During a surveillance study of *C. difficile* in asymptomatic LTCF patients and symptomatic patients in the affiliated acute care hospitals at 2 VA facilities (16), we detected a clonal outbreak of a newly recognized *C. difficile* strain at the Cleveland facility. This strain, identified as REA group DQ, ribotype 591, is closely related to the BI/RT027 strain, and a commercial PCR erroneously identified it as the epidemic NAP1 strain (i.e., BI/RT027). The strain was misidentified as NAP1 by Xpert *C. difficile* PCR (Cepheid) because of the similar genetic findings within the *C. difficile* pathogenicity locus, and the presence of the binary toxin CDT gene *cdtB* (33). Our findings and previous reports of other non-RT027 strains show that these genetic targets are not specific to NAP1 (12,13). Even though the outbreak of RT244 in Melbourne, Australia, was misidentified as NAP1 (RT027) by the same commercial PCR, it was associated with severe disease in the infected patients (12), suggesting the possibility of shared virulence determinants.

DQ/RT591 and BI/RT027 share several characteristics, including *tcdB*, *cdtB*, the 18-bp and position 117 *tcdC* deletions, and a similar cytotoxic phenotype. Despite these shared genetic and phenotypic characteristics, in vitro toxin production appeared

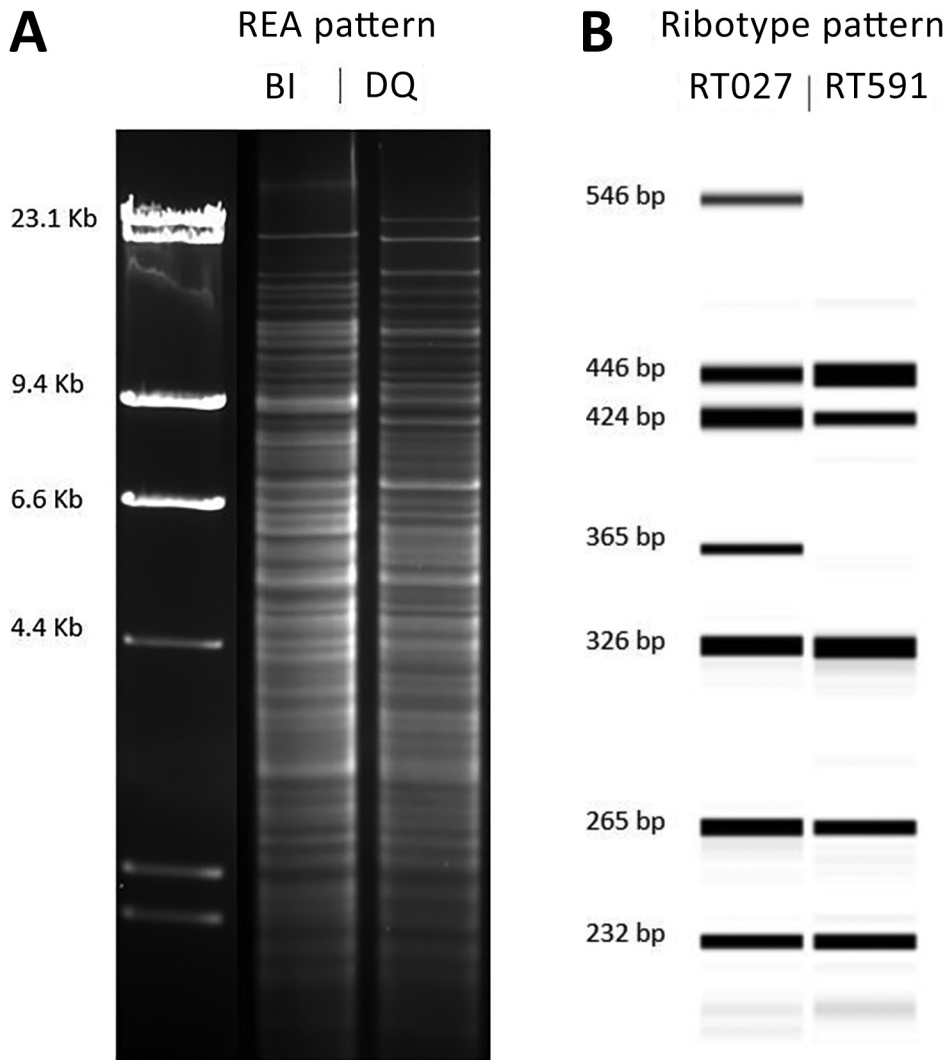


Figure 1. Comparison of the molecular characteristics of *Clostridioides difficile* strain DQ/591 and the epidemic BI/027 strain in study of *C. difficile* at 2 US Veteran Affairs long-term care facilities and their affiliated acute care facilities. The *Hind*III RFLP (A) and PCR ribotype (B) banding patterns were distinct between REA strain DQ/RT591 and REA strain BI/RT027. Molecular weight markers (in kb) are shown adjacent to the REA gel pattern. An internal spiked LIZ 1200 standard was used for fragment length calibrations (in bp) of the PCR ribotype gel patterns. REA, restriction endonuclease analysis.

to be delayed and somewhat lower in the DQ/RT591 strain than in BI/RT027. The clinical manifestations of the patients colonized or infected with DQ/RT591 were not unusual and did not differ substantially from those of patients with BI/NAP1/027 and other strain types in the cohort reported here. In nearly half (47%) of the patients, symptoms developed that were consistent with CDI. Although no fulminant CDI cases or deaths directly related to *C. difficile* were recognized, in CDI that developed because of DQ/591, 43% were classified as severe CDI in accordance with Infectious Diseases Society of America and Society for Healthcare Epidemiology of America guidelines. Likewise, no fulminant CDI cases or CDI-related deaths were recognized among the patients infected with BI/RT027 during this same study. However, all-cause mortality was lower for persons with non-DQ/RT591 and non-BI/RT027

infections. All the documented transmission events occurred in the BI/RT027 patients (34). Despite the fact that all the CDI cases caused by DQ/RT591 were healthcare associated, WGS did not identify any transmission events between patients because core genome SNP differences were >8 among DQ isolates (Appendix Figure 3) (34).

All patients in whom DQ/RT591 was confirmed had received antimicrobial drugs within 90 days before testing, and all patients with a CDI were classified as having a healthcare-associated infection; nearly all cases occurred in the LTCF or spinal cord injury unit. No specific antimicrobial drug was highly associated with infection by this strain. Fluoroquinolones have been associated with CDI outbreaks with the BI/RT027 strain, which is highly resistant to fluoroquinolones in vitro (35). Among the DQ/RT591- and BI/RT027-infected patients, receipt of fluoroquinolones or

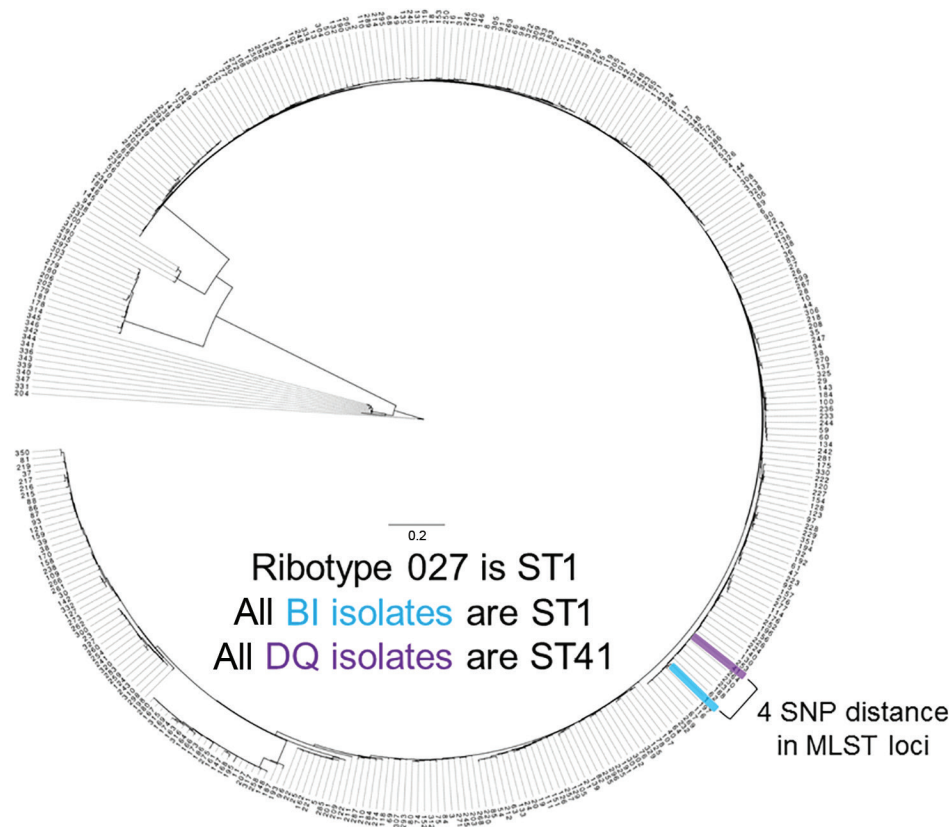


Figure 2. MLST loci map for *Clostridioides difficile* strains DQ/RT591 and BI/RT027 in study of *C. difficile* at 2 US Veteran Affairs long-term care facilities and their affiliated acute care facilities. The 2 strains are 4 SNPs apart. Scale bar indicates nucleotide substitutions per variable site of loci. MLST, multilocus sequence typing; SNP, single-nucleotide polymorphism; ST, sequence type.

clindamycin was limited. Despite high-level resistance to clindamycin in vitro and the presence of *ermB* in DQ/RT591, only 1 patient infected with this strain had received clindamycin.

Our experience was limited, but DQ/RT591 did not appear to carry the same level of clinical severity that BI/RT027 has exhibited (6). This difference in severity might be attributable to delayed toxin

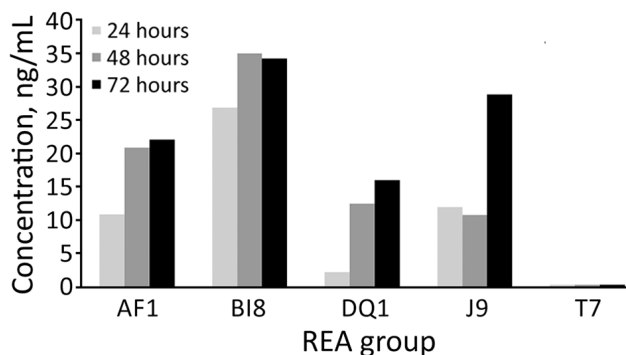


Figure 3. Quantitative in vitro total toxin production in study of *C. difficile* at 2 US Veteran Affairs long-term care facilities and their affiliated acute care facilities. Results at 24, 48, and 72 hours of incubation are shown for REA strains AF (ribotype 244), BI (ribotype 027), DQ (ribotype 591), J (ribotype 001), and T (a nontoxigenic *Clostridioides difficile* strain). REA, restriction endonuclease analysis.

production in vivo (Figure 3). Although increased toxin production has been proposed as the reason for increased virulence with the BI/RT027 strain (4,29), increased toxin production was not demonstrated for the AF/RT244 strain, which nevertheless was associated with an outbreak of increased severity in Australia (12). AF/RT244 also shows a different cytopathic effect than BI/027, which suggests the presence of a variant toxin B in AF/RT244 (4,12). Factors associated with increased virulence associated with these strains are still incompletely defined.

Because REA DQ/RT591 is closely related to BI/027, further monitoring is required to determine whether this strain carries risk for increased illness and death or has the capability of widespread dissemination. Since we completed this work, RT591 was reported as the most prevalent *C. difficile* strain in 3 tertiary hospitals in Colombia. These RT591 isolates were also mostly resistant to clindamycin (85%) (36).

Acknowledgments

The RT244 strain was a gift from T. Riley. We thank Adam Cheknis for technical support with the toxin and susceptibility assays. We also thank Brandi M. Limbago, Maria Karlsson, and Ashley L. Paulick for their support on this project.

This study was supported by the Centers for Disease Control and Prevention and by the Department of Veterans Affairs.

About the Author

Dr. Skinner is an infectious diseases fellow at Loyola University Medical Center and the Hines Veterans Affairs Hospital. His research interests include *C. difficile* epidemiology, treatment, host response, and molecular characterization.

References


- Dallal RM, Harbrecht BG, Boujoukas AJ, Sirio CA, Farkas LM, Lee KK, et al. Fulminant *Clostridium difficile*: an underappreciated and increasing cause of death and complications. *Ann Surg*. 2002;235:363–72. <https://dx.doi.org/10.1097/00000658-200203000-00008>
- McDonald LC, Killgore GE, Thompson A, Owens RC Jr, Kazakova SV, Sambol SP, et al. An epidemic, toxin gene-variant strain of *Clostridium difficile*. *N Engl J Med*. 2005;353:2433–41. <http://dx.doi.org/10.1056/NEJMoa051590>
- Lessa FC, Mu Y, Bamberg WM, Beldavs ZG, Dumyati GK, Dunn JR, et al. Burden of *Clostridium difficile* infection in the United States. *N Engl J Med*. 2015;372:825–34. <https://dx.doi.org/10.1056/NEJMoa1408913>
- O'Connor JR, Johnson S, Gerding DN. *Clostridium difficile* infection caused by the epidemic BI/NAP1/027 strain. *Gastroenterology*. 2009;136:1913–24. <https://dx.doi.org/10.1053/j.gastro.2009.02.073>
- Brazier JS, Raybould R, Patel B, Duckworth G, Pearson A, Charlett A, et al.; HPA Regional Microbiology Network. Distribution and antimicrobial susceptibility patterns of *Clostridium difficile* PCR ribotypes in English hospitals, 2007–08. *Euro Surveill*. 2008;13:19000. <https://dx.doi.org/10.2807/ese.13.41.19000-en>
- See I, Mu Y, Cohen J, Beldavs ZG, Winston LG, Dumyati G, et al. NAP1 strain type predicts outcomes from *Clostridium difficile* infection. *Clin Infect Dis*. 2014;58:1394–400. <https://dx.doi.org/10.1093/cid/ciu125>
- Merrigan M, Venugopal A, Mallozzi M, Roxas B, Viswanathan VK, Johnson S, et al. Human hypervirulent *Clostridium difficile* strains exhibit increased sporulation as well as robust toxin production. *J Bacteriol*. 2010;192:4904–11. <https://dx.doi.org/10.1128/JB.00445-10>
- He M, Miyajima F, Roberts P, Ellison L, Pickard DJ, Martin MJ, et al. Emergence and global spread of epidemic healthcare-associated *Clostridium difficile*. *Nat Genet*. 2013;45:109–13. <https://dx.doi.org/10.1038/ng.2478>
- Jump RLP, Pultz MJ, Donskey CJ. Vegetative *Clostridium difficile* survives in room air on moist surfaces and in gastric contents with reduced acidity: a potential mechanism to explain the association between proton pump inhibitors and *C. difficile*-associated diarrhea? *Antimicrob Agents Chemother*. 2007;51:2883–7. <https://dx.doi.org/10.1128/AAC.01443-06>
- Gerding DN, Johnson S, Rupnik M, Aktories K. *Clostridium difficile* binary toxin CDT: mechanism, epidemiology, and potential clinical importance. *Gut Microbes*. 2014;5:15–27. <https://dx.doi.org/10.4161/gmic.26854>
- Scardina T, Labuszewski L, Pacheco SM, Adams W, Schreckenberger P, Johnson S. *Clostridium difficile* infection (CDI) severity and outcome among patients infected with the NAP1/BI/027 strain in a non-epidemic setting. *Infect Control Hosp Epidemiol*. 2015;36:280–6. <https://dx.doi.org/10.1017/ice.2014.45>
- Lim SK, Stuart RL, Mackin KE, Carter GP, Kotsanas D, Francis MJ, et al. Emergence of a ribotype 244 strain of *Clostridium difficile* associated with severe disease and related to the epidemic ribotype 027 strain. *Clin Infect Dis*. 2014;58:1723–30. <https://dx.doi.org/10.1093/cid/ciu203>
- Kok J, Wang Q, Thomas LC, Gilbert GL. Presumptive identification of *Clostridium difficile* strain 027/NAP1/BI on Cepheid Xpert: interpret with caution. *J Clin Microbiol*. 2011;49:3719–21. <https://dx.doi.org/10.1128/JCM.00752-11>
- Wehrhahn MC, Keighley C, Kurtovic J, Knight DR, Hong S, Hutton ML, et al. A series of three cases of severe *Clostridium difficile* infection in Australia associated with a binary toxin producing clade 2 ribotype 251 strain. *Anaerobe*. 2019;55:117–23. <https://dx.doi.org/10.1016/j.anaerobe.2018.11.009>
- Donskey CJ, Sunkesula VC, Jencson AL, Stone ND, Gould CV, McDonald LC, et al. Utility of a commercial PCR assay and a clinical prediction rule for detection of toxigenic *Clostridium difficile* in asymptomatic carriers. *J Clin Microbiol*. 2014;52:315–8. <https://dx.doi.org/10.1128/JCM.01852-13>
- Pacheco SM, Donskey CJ, Samore M, Mayer J, Stone ND, Gould CV, et al. *Clostridium difficile* strains colonizing long-term care facility (LTCF) residents are similar to strains causing infection in both LTCF and hospital patients suggesting a shared continuum of transmission. *Open Forum Infect Dis*. 2014;1(Suppl 1):S437–8. <https://dx.doi.org/10.1093/ofid/ofu052.1184>
- McDonald LC, Gerding DN, Johnson S, Bakken JS, Carroll KC, Coffin SE, et al. Clinical practice guidelines for *Clostridium difficile* infection in adults and children: 2017 update by the Infectious Diseases Society of America (IDSA) and Society for Healthcare Epidemiology of America (SHEA). *Clin Infect Dis*. 2018;66:987–94. <https://dx.doi.org/10.1093/cid/ciy149>
- Clabots CR, Johnson S, Bettin KM, Mathie PA, Mulligan ME, Schaberg DR, et al. Development of a rapid and efficient restriction endonuclease analysis typing system for *Clostridium difficile* and correlation with other typing systems. *J Clin Microbiol*. 1993;31:1870–5.
- Fawley WN, Knetsch CW, MacCannell DR, Harmanus C, Du T, Mulvey MR, et al. Development and validation of an internationally-standardized, high-resolution capillary gel-based electrophoresis PCR-ribotyping protocol for *Clostridium difficile*. *PLoS One*. 2015;10:e0118150. <https://dx.doi.org/10.1371/journal.pone.0118150>
- Abrahamian FM, Talan DA, Krishnadasan A, Citron DM, Paulick AL, Anderson LJ, et al.; EMERGENCY ID NET Study Group. EMERGENCY ID NET Study Group. EMERGENCY ID NET Study Group. *Clostridium difficile* infection among US emergency department patients with diarrhea and no vomiting. *Ann Emerg Med*. 2017;70:19–27.e4. <https://dx.doi.org/10.1016/j.annemergmed.2016.12.013>
- Rupnik M, Brazier JS, Duerden BI, Grabnar M, Stubbs SL. Comparison of toxinotyping and PCR ribotyping of *Clostridium difficile* strains and description of novel toxinotypes. *Microbiology*. 2001;147:439–47. <https://dx.doi.org/10.1099/00221287-147-2-439>
- Cox MP, Peterson DA, Biggs PJ, Solexa QA. SolexaQA: At-a-glance quality assessment of Illumina second-generation sequencing data. *BMC Bioinformatics*. 2010;11:485. <https://dx.doi.org/10.1186/1471-2105-11-485>
- Bankevich A, Nurk S, Antipov D, Gurevich AA, Dvorkin M, Kulikov AS, et al. SPAdes: a new genome assembly algorithm and its applications to single-cell sequencing. *J Comput Biol*. 2012;19:455–77. <https://dx.doi.org/10.1089/cmb.2012.0021>
- Kurtz S, Phillippy A, Delcher AL, Smoot M, Shumway M, Antonescu C, et al. Versatile and open software for

- comparing large genomes. *Genome Biol.* 2004;5:R12. <https://dx.doi.org/10.1186/gb-2004-5-2-r12>
25. Warnes GR, Bolker B, Bonebakker L, Gentleman R, Liaw WHA, Lumley T, et al. *gplots*: Various R programming tools for plotting data. R package version 2.16.0. 2016 [cited 2018 Nov 18]. <https://CRAN.R-project.org/package=gplots>
 26. Stamatakis A. RAxML version 8: a tool for phylogenetic analysis and post-analysis of large phylogenies. *Bioinformatics.* 2014;30:1312–3. <https://dx.doi.org/10.1093/bioinformatics/btu033>
 27. Warny M, Pepin J, Fang A, Killgore G, Thompson A, Brazier J, et al. Toxin production by an emerging strain of *Clostridium difficile* associated with outbreaks of severe disease in North America and Europe. *Lancet.* 2005;366:1079–84. [https://dx.doi.org/10.1016/S0140-6736\(05\)67420-X](https://dx.doi.org/10.1016/S0140-6736(05)67420-X)
 28. Sambol SP, Tang JK, Merrigan MM, Johnson S, Gerding DN. Infection of hamsters with epidemiologically important strains of *Clostridium difficile*. *J Infect Dis.* 2001;183:1760–6. <https://dx.doi.org/10.1086/320736>
 29. Razaq N, Sambol S, Nagaro K, Zukowski W, Cheknis A, Johnson S, et al. Infection of hamsters with historical and epidemic BI types of *Clostridium difficile*. *J Infect Dis.* 2007;196:1813–9. <https://dx.doi.org/10.1086/523106>
 30. Clinical and Laboratory Standards Institute. *Methods for antimicrobial susceptibility testing of anaerobic bacteria; approved standard: eighth edition (M11-A8)*. Wayne (PA): The Institute; 2012.
 31. Clinical and Laboratory Standards Institute. *Performance standards for antimicrobial susceptibility testing; twenty-seventh edition (M100-S27)*. Wayne (PA): The Institute; 2017.
 32. Curry SR, Marsh JW, Muto CA, O'Leary MM, Pasculle AW, Harrison LH. *tcdC* genotypes associated with severe TcdC truncation in an epidemic clone and other strains of *Clostridium difficile*. *J Clin Microbiol.* 2007;45:215–21. <https://dx.doi.org/10.1128/JCM.01599-06>
 33. Gupta SK, Padmanabhan BR, Diene SM, Lopez-Rojas R, Kempf M, Landraud L, et al. ARG-ANNOT (antibiotic resistance gene-ANNOTation), a new bioinformatic tool to discover antibiotic resistance genes in bacterial genomes. *Antimicrob Agents Chemother.* 2014;58:212–20. <https://dx.doi.org/10.1128/AAC.01310-13>
 34. Donskey CJ, Sunkesula VCK, Stone ND, Gould CV, McDonald LC, Samore M, et al. Transmission of *Clostridium difficile* from asymptotically colonized or infected long-term care facility residents. *Infect Control Hosp Epidemiol.* 2018;39:909–16. <https://dx.doi.org/10.1017/ice.2018.106>
 35. Wiczorkiewicz JT, Lopansri BK, Cheknis A, Osmolski JR, Hecht DW, Gerding DN, et al. Fluoroquinolone and macrolide exposure predict *Clostridium difficile* infection (CDI) with the highly fluoroquinolone- and macrolide-resistant epidemic *C. difficile* strain, BI/NAP1/027. *Antimicrob Agents Chemother.* 2015;60:418–23. <https://dx.doi.org/10.1128/AAC.01820-15>
 36. Salazar CL, Reyes C, Atehortua S, Sierra P, Correa MM, Paredes-Sabja D, et al. Molecular, microbiological and clinical characterization of *Clostridium difficile* isolates from tertiary care hospitals in Colombia. *PLoS One.* 2017; 12:e0184689. <https://dx.doi.org/10.1371/journal.pone.0184689>

Address for correspondence: Stuart Johnson, Edward Hines, Jr. VA Hospital, Infectious Diseases, Research Service/151, 5000 S 5th Ave, Hines, IL 60141, USA; email: stuart.johnson2@va.gov; Andrew M. Skinner, Loyola University Medical Center, 2160 S 1st Ave, Maywood, IL 60153, USA; email: andrew.skinner@lumc.edu

April 2018

**EMERGING
INFECTIOUS DISEASES™**



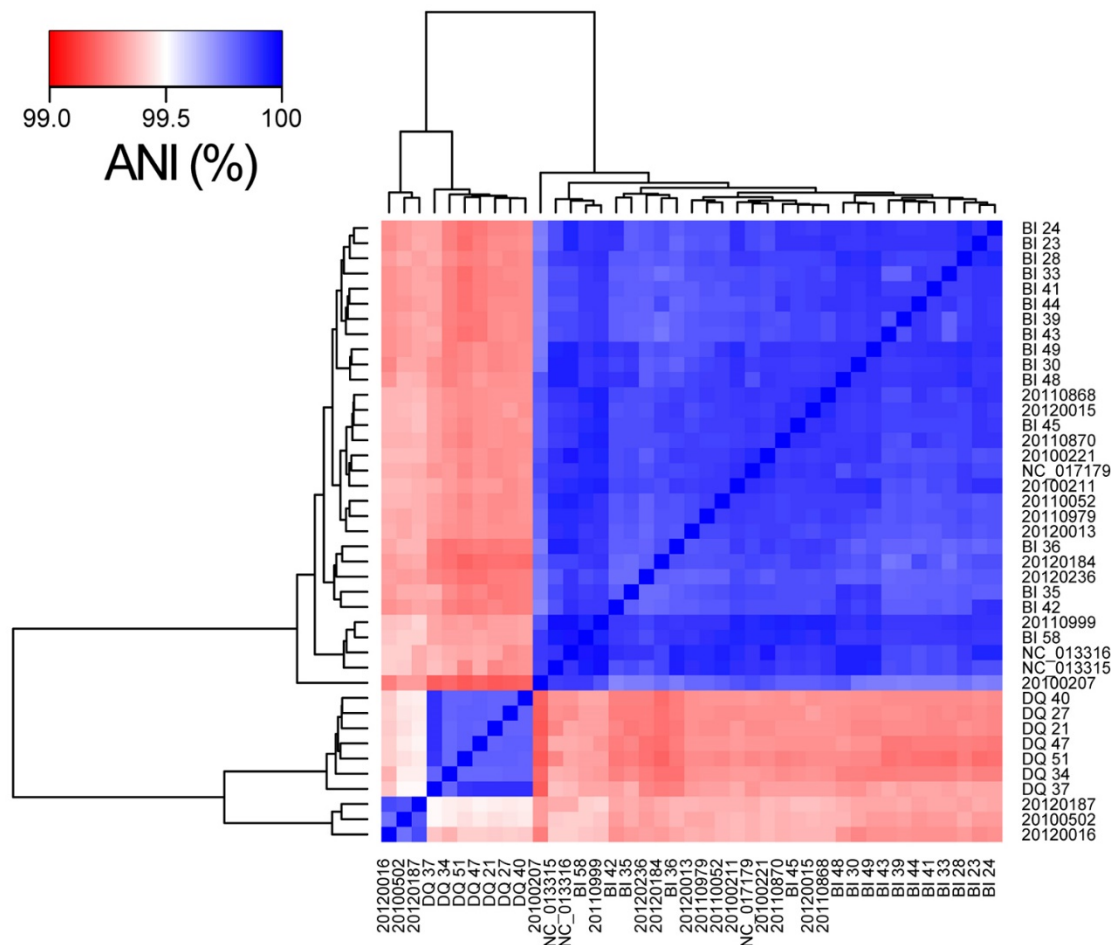
Antimicrobial Resistance

- Seroprevalence of Chikungunya Virus in 2 Urban Areas of Brazil 1 Year after Emergence
- Two Infants with Presumed Congenital Zika Syndrome, Brownsville, Texas, USA, 2016–2017
- Reemergence of Intravenous Drug Use as Risk Factor for Candidemia, Massachusetts, USA
- Rickettsial Illnesses as Important Causes of Febrile Illness in Chittagong, Bangladesh
- Influence of Population Immunosuppression and Past Vaccination on Smallpox Reemergence
- Emerging Coxsackievirus A6 Causing Hand, Foot and Mouth Disease, Vietnam
- Influenza A(H7N9) Virus Antibody Responses in Survivors 1 Year after Infection, China, 2017
- Genomic Surveillance of 4CMenB Vaccine Antigenic Variants among Disease-Causing *Neisseria meningitidis* Isolates, United Kingdom, 2010–2016
- Evolution of Sequence Type 4821 Clonal Complex Meningococcal Strains in China from Prequinolone to Quinolone Era, 1972–2013
- Avirulent *Bacillus anthracis* Strain with Molecular Assay Targets as Surrogate for Irradiation-Inactivated Virulent Spores
- Phenotypic and Genotypic Characterization of *Enterobacteriaceae* Producing Oxacillinase-48–Like Carbapenemases, United States
- Bacterial Infections in Neonates, Madagascar, 2012–2014
- Artemisinin-Resistant *Plasmodium falciparum* with High Survival Rates, Uganda, 2014–2016
- Carbapenem-Nonsusceptible *Acinetobacter baumannii*, 8 US Metropolitan Areas, 2012–2015
- Cooperative Recognition of Internationally Disseminated Ceftriaxone-Resistant *Neisseria gonorrhoeae* Strain

To revisit the April 2018 issue, go to:
[https://wwwnc.cdc.gov/eid/articles/
issue/24/4/table-of-contents](https://wwwnc.cdc.gov/eid/articles/issue/24/4/table-of-contents)

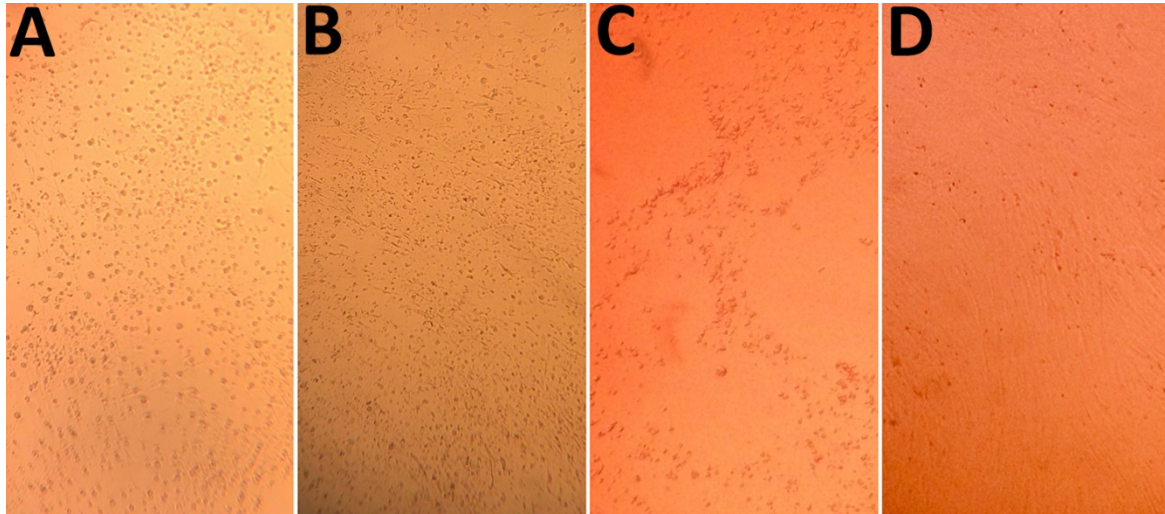
Unique Clindamycin-Resistant *Clostridioides difficile* Strain Related to Fluoroquinolone-Resistant Epidemic BI/RT027 Strain

Appendix

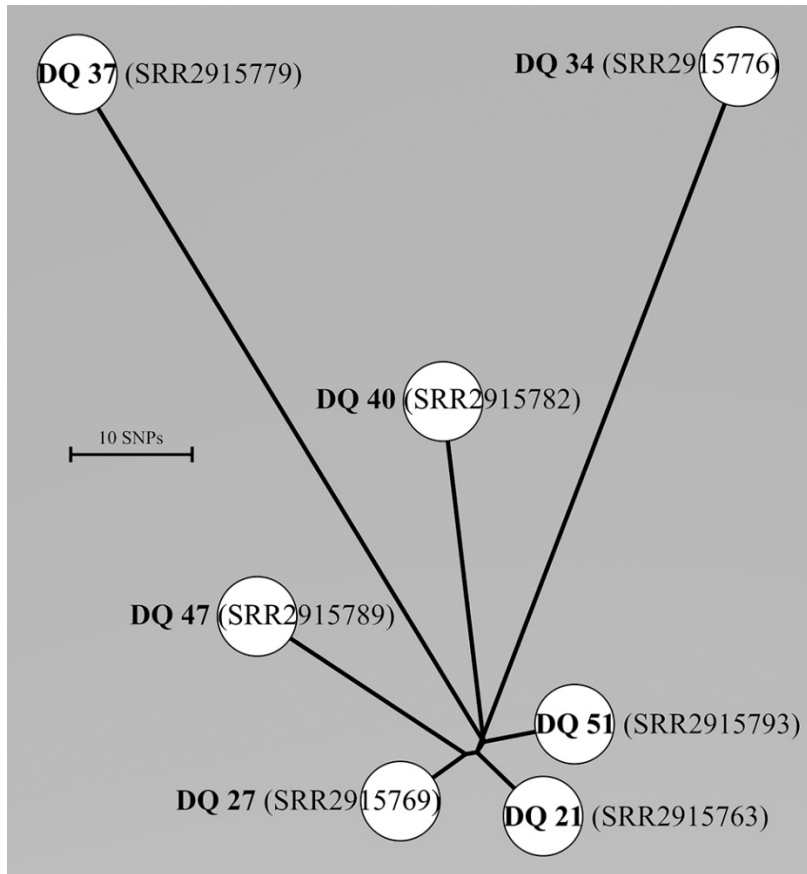


Appendix Figure 1. Pairwise ANI comparisons demonstrate clear partitioning of DQ/RT591 and BI/RT027 isolates at the whole-genome level. Strains with a BI or DQ prefix were recovered from the outbreak (n = 23) and were PCR ribotyped but named according to our REA results, NC_ prefixed strains are public reference genomes retrieved from NCBI GenBank(n = 3), and the remaining numbered strains

(n = 15) are genomes from our NCBI BioProject 296517 that we typed by PCR ribotyping and correspond to RT027, which cluster with the BI strains or correspond to RT591, which cluster with the DQ strains. ANI, average nucleotide identity.



Appendix Figure 2. Cytopathic effect of supernatants from toxigenic *Clostridioides difficile* strains DQ/RT591(A), BI/RT027(B), and AF/RT244 (C) on human fibroblast cells compared with the noncytopathic effect of toxin A/B negative *C. difficile* restriction endonuclease analysis (REA) group T strain (D). Note the atypical cytopathic effect of AF/RT244 with the rounding and clumping of the fibroblasts. The cytopathic effects of DQ/RT591 and BI/RT027, both of which are toxinotype III strains, are identical to the cytopathic effect of toxinotype 0 strains (data not shown). The atypical cytopathic effect seen with AF/RT244 (toxinotype IX [1]) also has been seen in toxinotype VIII strains that produce a variant toxin B (2).



Appendix Figure 3. Minimum-spanning tree of core genomic single-nucleotide polymorphism (SNP) sites for 7 DQ/RT591 isolates. Sample identifiers are in bold, and the corresponding NCBI GenBank accession numbers are in parentheses. Scale bar indicates 10 SNPs. The mean SNP distance between isolates was 38 (range 8–79).

References

1. Rupnik M, Janezic S. An update on *Clostridium difficile* toxinotyping. J Clin Microbiol. 2016;54:13–8. [PubMed https://dx.doi.org/10.1128/JCM.02083-15](https://dx.doi.org/10.1128/JCM.02083-15)
2. von Eichel-Streiber C, Zec-Pirnat I, Grabnar M, Rupnik M. A nonsense mutation abrogates production of a functional enterotoxin A in *Clostridium difficile* toxinotype VIII strains of serogroups F and X. FEMS Microbiol Lett. 1999;178:163–8. [PubMed https://dx.doi.org/10.1016/S0378-1097\(99\)00327-4](https://dx.doi.org/10.1016/S0378-1097(99)00327-4)