

Differential Tropism of SARS-CoV and SARS-CoV-2 in Bat Cells

Susanna K.P. Lau,¹ Antonio C.P. Wong,¹ Hayes K.H. Luk,¹ Kenneth S.M. Li, Joshua Fung, Zirong He, Flora K.K. Cheng, Tony T.Y. Chan, Stella Chu, Kam Leng Aw-Yong, Terrence C.K. Lau, Kitty S.C. Fung, Patrick C.Y. Woo

Severe acute respiratory syndrome coronavirus 2 did not replicate efficiently in 13 bat cell lines, whereas severe acute respiratory syndrome coronavirus replicated efficiently in kidney cells of its ancestral host, the *Rhinolophus sinicus* bat, suggesting different evolutionary origins. Structural modeling showed that RBD/RsACE2 binding may contribute to the differential cellular tropism.

Coronavirus disease (COVID-19) is a global pandemic, affecting 213 countries with >2.7 million confirmed cases and 190,000 fatalities as of April 25, 2020 (1). Its causative agent was identified as severe acute respiratory syndrome coronavirus (SARS-CoV) 2 (SARS-CoV-2), which belongs to the same coronavirus species as SARS-CoV and SARS-related CoVs (SARSr-CoVs) in horseshoe bats (genus *Rhinolophus*) (2,3). Given the history among some early case-patients of visiting the Huanan seafood market in Wuhan, China, and its genetic close relatedness to SARSr-CoVs in bats and pangolins (2,4), SARS-CoV-2 was suspected to have emerged from wild animals, particularly bats, similar to SARS-CoV. SARS-CoV was a recombinant virus that originated from Chinese horseshoe bats (*Rhinolophus sinicus*) before it infected palm civets and then humans (5).

Studying cellular tropism may provide clues to the host range and possible origin of zoonotic viruses. For example, SARS-CoV could replicate efficiently in kidney cells of its primary origin, *R. sinicus*, but not in other tested bat cells (6). To elucidate the possible origin of SARS-CoV-2, we tested susceptibilities of bat cell lines developed from different

species commonly found in southern China to infection by SARS-CoV-2 in comparison with SARS-CoV. The selected bat species harbored a diverse set of coronaviruses, including SARSr-CoVs and Middle East respiratory syndrome-related coronaviruses (MERSr-CoVs), which pose potential health threats to humans (7). We also performed structural modeling of the virus/host receptor-binding interface.

The Study

SARS-CoV strain HKU-39849 was isolated in Hong Kong during the SARS epidemic as previously described (8). SARS-CoV-2 strain HK20 was isolated from a patient with COVID-19 in Hong Kong in early February 2020 (3). Thirteen primary or immortalized bat cell lines from 6 different bat species were subjected to infection with SARS-CoV and SARS-CoV-2 at multiplicity of infection of 0.1 as described previously (6,9,10), except with the addition of 2 µg/mL trypsin. The bat species included *Miniopterus pusillus*, *Pipistrellus abramus* (harboring *Pipistrellus*-BatCoV-HKU5), *R. sinicus* (harboring SARSr-BatCoVs, *Rhinolophus*-BatCoV-HKU2, *Rhinolophus sinicus*-BatCoV-HKU32), *Tylonycteris pachypus* (harboring *Tylonycteris*-BatCoV-HKU4), *Rousettus leschenaultii* (harboring many viruses, including *Rousettus*-BatCoV-HKU9 and *Rousettus*-BatCoV-HKU10), and *Myotis ricketii* (harboring *Myotis*-BatCoV-HKU6). Vero cells from African green monkey kidney were used as positive control (Figure 1; Appendix, <https://wwwnc.cdc.gov/EID/article/26/12/20-2308-App1.pdf>). We determined viral replication efficiency by quantitative reverse transcription PCR (qRT-PCR) on cell culture supernatants (Table 1) (6). Cells were considered susceptible to viral infection if qRT-PCR on day 5 postinfection showed $\geq 1 \log_{10}$ increase in viral titer with statistical significance ($p < 0.05$ by Student *t*-test).

Author affiliations: The University of Hong Kong, Hong Kong, China (S.K.P. Lau, A.C.P. Wong, H.K.K. Luk, K.S.M. Li, J. Fung, Z. He, F.K.K. Cheng, T.T.Y. Chan, S. Chu, K.L. Aw-Yong, P.C.Y. Woo); City University of Hong Kong, Hong Kong (T.C.K. Lau); United Christian Hospital, Kwun Tong, Hong Kong (K.S.C. Fung)

DOI: <https://doi.org/10.3201/eid2612.202308>

¹These authors contributed equally to this article.

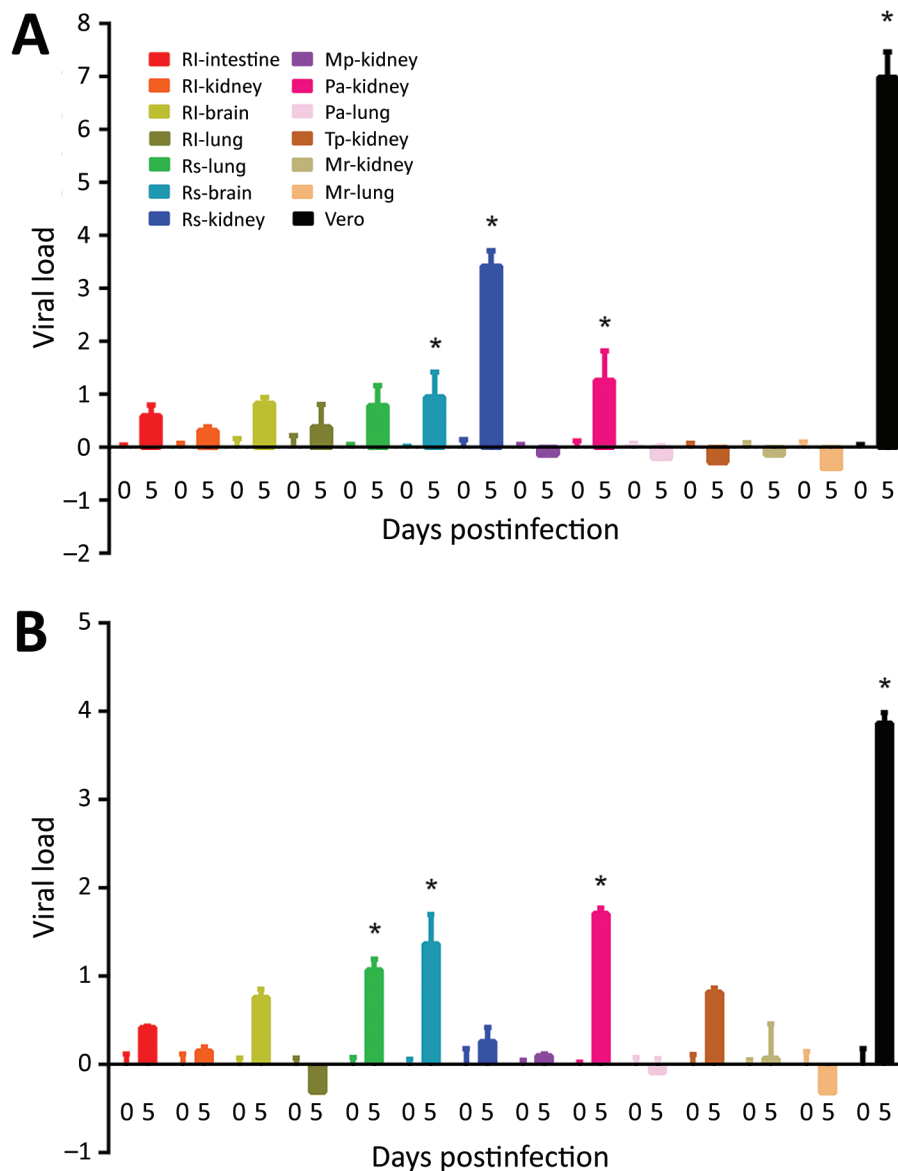


Figure 1. Susceptibilities of 13 bat cell lines to infection by SARS-CoV (A) and SARS-CoV-2 (B) shown from harvest of supernatants and cell lysates at day 0 and 5 postinfection. Viral titers and β -Actin mRNA were determined by real-time quantitative reverse transcription PCR. Viral load is expressed as normalized fold change in \log_{10} . Error bars indicate SDs of triplicate samples. Bat cell lines are listed by species and organ. Vero cells served as controls. Asterisk (*) indicates $p < 0.05$ and increase in viral load $\geq 1 \log_{10}$. Mp, *Miniopterus pusillus*, Mr, *Myotis ricketti*; Pa, *Pipistrellus abramus*, RI, *Rousettus leschenaultii*, Rs, *Rhinolophus sinicus*, Tp, *Tylonycteris pachypus*. SARS-CoV, severe acute respiratory syndrome coronavirus.

SARS-CoV but not SARS-CoV-2 can replicate efficiently in *R. sinicus* kidney cells; SARS-CoV showed $3.48 \log_{10}$ -fold increase in viral titer. In contrast, only SARS-CoV-2 can replicate in *R. sinicus* lung cells, but at a low viral titer ($1.08 \log_{10}$ -fold increase). Moreover, SARS-CoV-2 can replicate more efficiently ($1.46 \log_{10}$ -fold increase) in *R. sinicus* brain cells than SARS-CoV ($1.09 \log_{10}$ -fold increase), albeit still at low viral titer (Table 2; Figure 1). Both SARS-CoV and SARS-CoV-2 can also replicate in *P. abramus* kidney cells with low viral titers: $1.45 \log_{10}$ -fold increase for SARS-CoV and $1.71 \log_{10}$ -fold increase for SARS-CoV-2. We observed cytopathic effects in SARS-CoV-infected *R. sinicus* kidney cells and SARS-CoV- or SARS-CoV-2-infected *P. abramus* kidney cells with rounding of cells

(Appendix Figure 1). We performed immunofluorescence assay on those cell lines with $>1 \log_{10}$ -fold increase in viral load (Appendix Figure 2). *M. pusillus* kidney cells; *R. leschenaultii* kidney, brain, intestine, and lung cells; *T. pachypus* kidney cells; and *M. ricketti* kidney and lung cells did not support SARS-CoV or SARS-CoV-2 infection. Furthermore, both SARS-CoV and SARS-CoV-2 replicated less efficiently in Vero cells at 33°C than at 37°C , whereas no difference in viral replication in *R. sinicus* kidney cells was observed between 33°C and 37°C (Appendix Figure 3).

To elucidate whether the receptor-binding interface is a contributing factor for cellular tropism, we modeled the structure of the SARS-CoV-2 receptor binding domain (RBD) with that of human

Table 1. Primers used for reverse transcription quantitative PCR in study of coronavirus in bats*

| Target | Primers, 5' → 3' | | |
|---------------------------|---|---|---|
| | Forward | Reverse | Probe |
| SARS-CoV N gene CDC_N3 | GGGAGCCTTGAATACACCAAAA | TGTAGCACGATTGCAGCATTG | (FAM) AYCACATTGGCACCCGCAATCCTG (BHQ1) |
| β-actin | CTCTTCCAGCCCTCCTTCT (for bat cells) or CTCTTCCAGCCCTCCTTCT (for human cells) | TTCATCGTGCTGGGAGCC (for bat cells) or TTCATTGTGCTGGGTGCC (for human cells) | (FAM) CATGAAGTGYGACGTBGACATCC G(BHQ1) |

*CoV, coronavirus; N, nucleocapsid protein; SARS, severe acute respiratory syndrome.

angiotensin-converting enzyme 2 (hACE2), *R. sinicus* angiotensin-converting enzyme 2 (Rs-ACE2), and *P. abramus* angiotensin-converting enzyme 2 (Pa-ACE2) using homology modeling by SWISS-MODEL (<https://swissmodel.expasy.org>) as described previously (11), based on the crystal structure of SARS-CoV-RBD/hACE2. The sequence identity between SARS-CoV RBD (template) and SARS-CoV-2 RBD (template) was >50% and the interface for all RBD/ACE2 was similar (Figure 2). We identified 11 aa differences between SARS-CoV RBD and SARS-CoV-2 RBD sequences that involved 4 of 5 critical residues for hACE2 binding in SARS-CoV RBD. Y442 was one of the 5 critical residues in SARS-CoV RBD. Because F456 is more hydrophobic than Y442 in SARS-CoV-2 RBD, it may disturb the electrostatic interaction with hACE2/Rs-ACE2. The interface for RBD/Pa-ACE2 was similar to that of RBD/hACE2 (Figure 2), implying that Pa-ACE2 may also serve as the host receptor for SARS-CoV and SARS-CoV-2.

Conclusions

The ability of SARS-CoV but not SARS-CoV-2 to replicate in *R. sinicus* kidney cells, consistent with previous findings (12), may suggest a different evolutionary origin and path of SARS-CoV-2. SARS-CoV

was most closely related to SARSr-Rs-BatCoVs from Yunnan, China, suggesting *R. sinicus* as its primary origin. It could also use Rs-ACE2 as receptor for cell entry (13), which may explain the efficient replication of SARS-CoV in *R. sinicus* kidney cells. Although SARS-CoV-2 is closely related to SARSr-CoVs in bats and pangolins, none of the existing animal viruses represents the immediate ancestor of SARS-CoV-2. SARS-CoV-2 was most closely related to SARSr-Ra-BatCoV-RaTG13 (96.1% genome identity) in *Rhinolophus affinis* from Pu'er, Yunnan (2), except that its RBD region was closest to pangolin-SARSr-CoV-MP789 (86.9% nucleotide identity) in smuggled pangolins from Guangdong, suggesting that SARS-CoV-2 may have evolved through recombination (3). The inability of SARS-CoV-2 to efficiently infect and replicate in *R. sinicus* cells may imply that *R. sinicus* bats were unlikely to be its proximal origin. However, bats are the primary origin of SARS-CoV, human coronavirus 229E (HCoV-229E), and probably MERS-CoV; therefore, SARS-CoV-2 most likely originated from bats. One possibility is that SARS-CoV-2 has restricted bat species tropism. Other bat species, such as *R. affinis*, may harbor the ancestor of SARS-CoV-2 and can be tested for cellular susceptibilities in future studies. It is also possible that SARS-CoV-2 can no longer

Table 2. Viral load changes and cytopathic effects of severe acute respiratory syndrome coronavirus and coronavirus 2 in different cell lines on day 5 postinfection*

| Cell lines | SARS-CoV | | | SARS-CoV-2 | | |
|--|--------------------------------------|---------|-----|--------------------------------------|---------|-----|
| | Viral load change, log ₁₀ | p value | CPE | Viral load change, log ₁₀ | p value | CPE |
| <i>Rousettus leschenaultii</i> intestine | 0.63 | 0.0083 | – | 0.59 | 0.0039 | – |
| <i>Rousettus leschenaultii</i> kidney | 0.33 | 0.0071 | – | 0.15 | 0.0950 | – |
| <i>Rousettus leschenaultii</i> brain | 0.84 | 0.0019 | – | 0.77 | 0.0004 | – |
| <i>Rousettus leschenaultii</i> lung | 0.39 | 0.2345 | – | –0.31 | 0.1224 | – |
| <i>Rhinolophus sinicus</i> lung | 0.91 | 0.0226 | – | 1.08 | 0.0002 | – |
| <i>Rhinolophus sinicus</i> brain | 1.09 | 0.0251 | – | 1.46 | 0.0022 | – |
| <i>Rhinolophus sinicus</i> kidney | 3.48 | <0.0001 | + | 0.28 | 0.1280 | – |
| <i>Miniopterus pusillus</i> kidney | –0.14 | 0.0372 | – | 0.10 | 0.0241 | – |
| <i>Pipistrellus abramus</i> kidney | 1.45 | 0.0176 | + | 1.71 | <0.0001 | + |
| <i>Pipistrellus abramus</i> lung | –0.21 | 0.2401 | – | –0.09 | 0.4218 | – |
| <i>Tylonycteris pachypus</i> kidney | –0.27 | 0.0051 | – | 0.82 | 0.0003 | – |
| <i>Myotis ricketti</i> kidney | –0.14 | 0.1683 | – | 0.07 | 0.7615 | – |
| <i>Myotis ricketti</i> lung | –0.41 | 0.0289 | – | –0.32 | 0.0240 | – |
| Vero | 7.12 | <0.0001 | + | 3.88 | <0.0001 | + |

*CoV, coronavirus; CPE, cytopathic effects; SARS, severe acute respiratory syndrome.

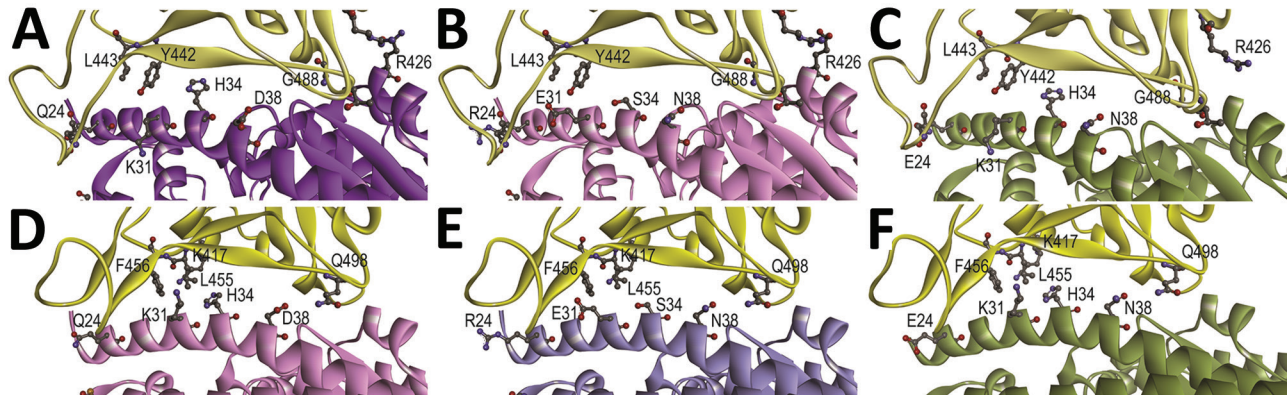


Figure 2. Structural modeling of the human (A, D), *Rhinolophus sinicus* bat (Rs-bat) (B, E), and *Pipistrellus abramus* bat (Pa-bat) (C, F) ACE2 with the receptor-binding domain (RBD) of the spike proteins of SARS-CoV and SARS-CoV-2. The models of RBDs of SARS-CoV and SARS-CoV-2 (yellow) are shown with human (purple), Rs-bat (pink), and Pa-bat (green) ACE2 structures in ribbon diagrams. The interface of different RBDs and human/bat ACE2 are shown and the residues with potential impact on binding affinity are shown in ball-and-stick format. Images were produced using Discovery Studio visualizer (Accelrys, <https://www.accelrys.com>).

replicate in bat cells because of substantial genetic adaptation, such as through natural evolution in an intermediate host before infecting humans.

The difference in critical residues for receptor binding between SARS-CoV and SARS-CoV-2 may have contributed to their differential infectivities in *R. sinicus* cells, as suggested by results from structural modeling of the receptor-binding interface. Whereas SARS-CoV RBD was most closely related to SARSr-Rs-BatCoV-WIV1 from *R. sinicus*, SARS-CoV-2 RBD was most closely related to the RBD region of pangolin-SARSr-CoV-MP789 from pangolins (14). Mutagenesis studies are needed to investigate whether changes of these amino acid sites may affect binding affinity to the ACE2 of different hosts and restore the infectivity of SARS-CoV-2 in *R. sinicus* cells.

The restricted cellular tropism of SARS-CoV and SARS-CoV-2 is different from that of MERS-CoV, which showed broad species tropism in bat cells. MERS-CoV could replicate in ≥ 5 bat cell lines (*M. ricketti* lung, *P. abramus* kidney, *R. sinicus* kidney and lung, and *R. leschenaultii* kidney cells) from 3 bat families (6). Although dromedary camels were the immediate source of MERS-CoV, bats were suggested to be the ultimate evolutionary origin (10,15). Of note, SARS-CoV, SARS-CoV-2, and MERS-CoV could all replicate in *P. abramus* kidneys at low titers. Structural modeling supported that *P. abramus* ACE2 could serve as host receptor for SARS-CoV and SARS-CoV-2. *P. abramus* is known to harbor *Pi*-BatCoV-HKU5 from the subgenus *Merbecovirus* (containing MERS-CoV) but not members of *Sarbecovirus* (containing SARS-CoV and SARS-CoV-2) (10,15). *P. abramus* is a potential accidental host for spillover of and source for emergence of diverse coronaviruses including SARSr-CoVs.

Acknowledgments

We thank Agriculture, Fisheries and Conservation Department, Government of Hong Kong, for capture of bats for bat cell development and expert opinion.

This study was partly supported by the theme-based research scheme (project no. T11-707/15-R) of the University Grant Committee; Health and Medical Research Fund of the Food and Health Bureau of HKSAR; Consultancy Service for Enhancing Laboratory Surveillance of Emerging Infectious Disease for the HKSAR Department of Health and the University Development Fund of the University of Hong Kong.

About the Author

Dr. Lau is a professor and head of the Department of Microbiology at the University of Hong Kong. Her research focuses on microbial genomics for studying emerging infectious diseases including coronaviruses.

References

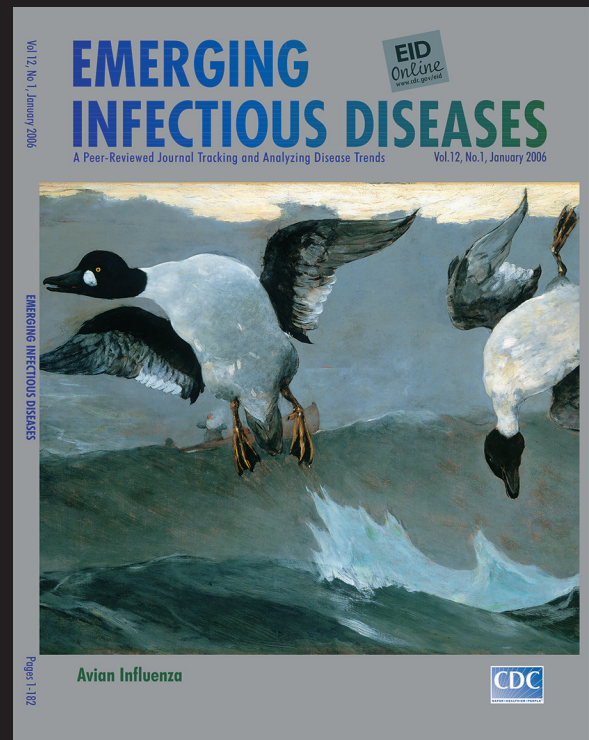
- World Health Organization. Coronavirus disease 2019 (COVID-19) situation report 96. 2020 Apr 25 [cited 2020 Apr 26]. https://www.who.int/docs/default-source/coronaviruse/situation-reports/20200425-sitrep-96-covid-19.pdf?sfvrsn=a33836bb_2
- Zhou P, Yang XL, Wang XG, Hu B, Zhang L, Zhang W, et al. A pneumonia outbreak associated with a new coronavirus of probable bat origin. *Nature*. 2020;579:270–3. <https://doi.org/10.1038/s41586-020-2012-7>
- Lau SKP, Luk HKH, Wong ACP, Li KSM, Zhu L, He Z, et al. Possible bat origin of severe acute respiratory syndrome coronavirus 2. *Emerg Infect Dis*. 2020;26:1542–7.
- Lam TT, Jia N, Zhang YW, Shum MH, Jiang JF, Zhu HC, et al. Identifying SARS-CoV-2-related coronaviruses in Malayan pangolins. *Nature*. 2020;583:282–5. <https://doi.org/10.1038/s41586-020-2169-0>

5. Lau SK, Woo PC, Li KS, Huang Y, Tsoi HW, Wong BH, et al. Severe acute respiratory syndrome coronavirus-like virus in Chinese horseshoe bats. *Proc Natl Acad Sci U S A*. 2005;102:14040-5. <https://doi.org/10.1073/pnas.0506735102>
6. Lau SKP, Fan RYY, Luk HKH, Zhu L, Fung J, Li KSM, et al. Replication of MERS and SARS coronaviruses in bat cells offers insights to their ancestral origins. *Emerg Microbes Infect*. 2018;7:1-11. <https://doi.org/10.1038/s41426-018-0208-9>
7. Wong ACP, Li X, Lau SKP, Woo PCY. Global epidemiology of bat coronaviruses. *Viruses*. 2019;11:174. <https://doi.org/10.3390/v11020174>
8. Peiris JS, Lai ST, Poon LL, Guan Y, Yam LY, Lim W, et al.; SARS study group. Coronavirus as a possible cause of severe acute respiratory syndrome. *Lancet*. 2003;361:1319-25. [https://doi.org/10.1016/S0140-6736\(03\)13077-2](https://doi.org/10.1016/S0140-6736(03)13077-2)
9. Lau SKP, Wong ACP, Zhang L, Luk HKH, Kwok JSL, Ahmed SS, et al. Novel bat alphacoronaviruses in southern China support Chinese horseshoe bats as an important reservoir for potential novel coronaviruses. *Viruses*. 2019;11:423. PubMed <https://doi.org/10.3390/v11050423>
10. Woo PC, Wang M, Lau SK, Xu H, Poon RW, Guo R, et al. Comparative analysis of twelve genomes of three novel group 2c and group 2d coronaviruses reveals unique group and subgroup features. *J Virol*. 2007;81:1574-85. <https://doi.org/10.1128/JVI.02182-06>
11. Lau SKP, Zhang L, Luk HKH, Xiong L, Peng X, Li KSM, et al. Receptor usage of a novel bat lineage C betacoronavirus reveals evolution of Middle East respiratory syndrome-related coronavirus spike proteins for human dipeptidyl peptidase 4 binding. *J Infect Dis*. 2018;218:197-207. <https://doi.org/10.1093/infdis/jiy018>
12. Chu H, Chan JF-W, Yuen TT-T, Shuai H, Yuan S, Wang Y, et al. Comparative tropism, replication kinetics, and cell damage profiling of SARS-CoV-2 and SARS-CoV with implications for clinical manifestations, transmissibility, and laboratory studies of COVID-19: an observational study. *Lancet Microbe*. 2020;1:e14-23. [https://doi.org/10.1016/S2666-5247\(20\)30004-5](https://doi.org/10.1016/S2666-5247(20)30004-5)
13. Ge XY, Li JL, Yang XL, Chmura AA, Zhu G, Epstein JH, et al. Isolation and characterization of a bat SARS-like coronavirus that uses the ACE2 receptor. *Nature*. 2013;503:535-8. <https://doi.org/10.1038/nature12711>
14. Menachery VD, Yount BL Jr, Sims AC, Debbink K, Agnihothram SS, Gralinski LE, et al. SARS-like WIV1-CoV poised for human emergence. *Proc Natl Acad Sci U S A*. 2016;113:3048-53. <https://doi.org/10.1073/pnas.1517719113>
15. Lau SK, Li KS, Tsang AK, Lam CS, Ahmed S, Chen H, et al. Genetic characterization of *Betacoronavirus* lineage C viruses in bats reveals marked sequence divergence in the spike protein of *Pipistrellus* bat coronavirus HKU5 in Japanese pipistrelle: implications for the origin of the novel Middle East respiratory syndrome coronavirus. *J Virol*. 2013;87:8638-50. <https://doi.org/10.1128/JVI.01055-13>

Address for correspondence: Susanna K.P. Lau or Patrick C.Y. Woo, Department of Microbiology, Li Ka Shing Faculty of Medicine, The University of Hong Kong, Room 26, 19/F, Block T, Queen Mary Hospital, 102 Pokfulam Road, Hong Kong, China; email: skplau@hku.hk or pcywoo@hku.hk

EID Podcast: The Mother of All Pandemics

Dr. David Morens, of the
National Institute of
Allergy and Infectious
Diseases, discusses the
1918 influenza pandemic.



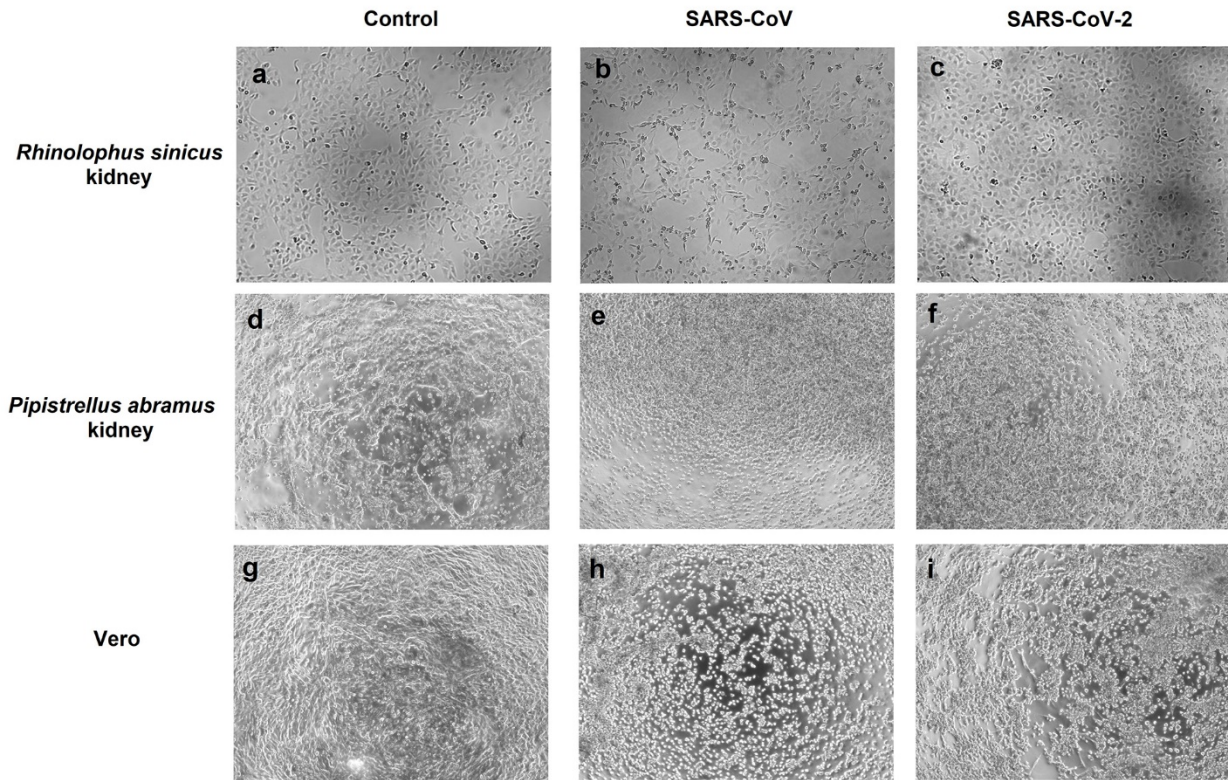
Visit our website to listen:
<https://tools.cdc.gov/medialibrary/index.aspx#/media/id/393805>

EMERGING INFECTIOUS DISEASES®

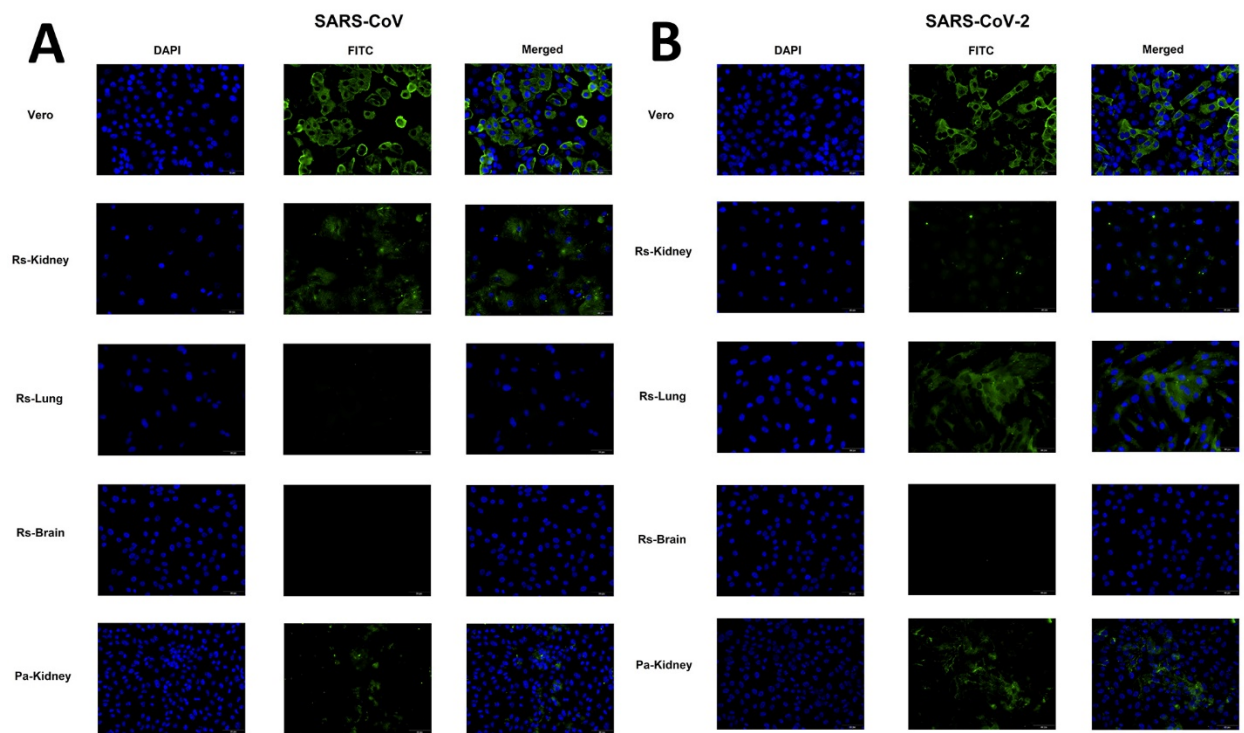
Differential Tropism of SARS-CoV and SARS-CoV-2 in Bat Cells

Appendix

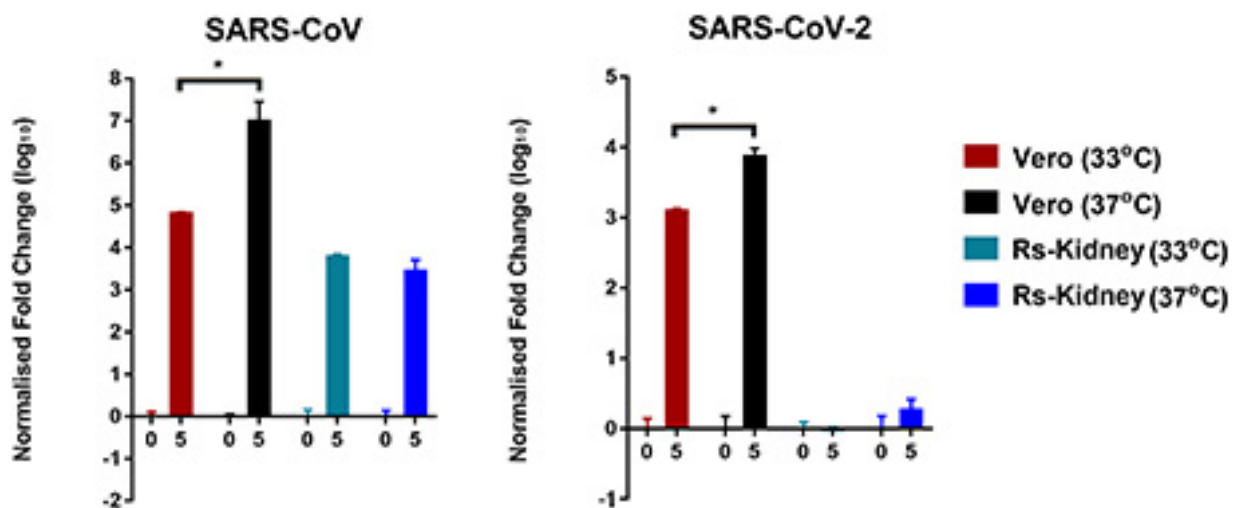
We tested 13 cell lines from *Rousettus leschenaultii* bat (intestine, kidney, brain, lung), *Rhinolophus sinicus* bat (lung, brain, kidney), *Miniopterus pusillus* bat (kidney), *Pipistrellus abramus* bat (kidney, lung), *Tylonycteris pachypus* bat (kidney), and *Myotis ricketti* bat (kidney, lung). Cells were subject to infection by SARS-CoV and SARS-CoV-2 viruses (isolated from Vero cells, Passage 6) with MOI of 0.1 and with 2 post-adsorption washings. We performed the testing in triplicate. Supernatants and cell lysates were harvested at day 0 and day 5 postinfection. Viral titers and β -Actin mRNA were determined by real-time quantitative RT-PCR. Viral load was expressed as normalized fold change in \log_{10} . *Rhinolophus sinicus* brain and kidney cells and *Pipistrellus abramus* kidney cells can support SARS-CoV infection, demonstrated by $\geq 1 \log_{10}$ increase in viral load at day 5 ($p < 0.05$). *Rhinolophus sinicus* lung and brain cells and *Pipistrellus abramus* kidney cells support SARS-CoV-2 infection.



Appendix Figure 1. Cytopathic effects (CPE) in infected *Rhinolophus sinicus* kidney, *Pipistrellus abramus* kidney and Vero cells on day 5 postinfection. CPE was compared between *Rhinolophus sinicus* kidney cells that were uninfected (control) (A), and infected with SARS-CoV (B) and SARS-CoV-2 (C). CPE was compared between *P. abramus* kidney cells that were uninfected (control) (D), infected with SARS-CoV (E) and SARS-CoV-2 (F). CPE was compared between Vero cells that were uninfected (control) (G), infected with SARS-CoV (H) and SARS-CoV-2 (I).



Appendix Figure 2. Antigen expression of SARS-CoV and SARS-CoV-2 in Vero and bat cell lines. Selected cell lines were subject to infection by SARS-CoV (A) and SARS-CoV-2 (B). Antigen expression of SARS-CoV and SARS-CoV-2 with MOI of 0.1 were assessed with immunofluorescence staining. Infected cells were fixed with 4% paraformaldehyde at 24 hpi and immunolabelled with rabbit anti-SARS-CoV-NP and SARS-CoV-2-NP primary antibody, followed by fluorescein isothiocyanate (FITC) conjugated goat-antirabbit antibody and mounting solution with DAPI stain. Bars represent 50 μm .



Appendix Figure 3. Susceptibilities of Vero and *Rhinolophus sinicus* kidney cell lines to infection by SARS-CoV and SARS-CoV-2 at different temperatures. *Rhinolophus sinicus* kidney (Rs-Kidney) and Vero cells were subject to infection by SARS-CoV (A) and SARS-CoV-2 (B) with MOI of 0.1 at 33°C and 37°C. Supernatants and cell lysates were harvested at day 0 and day 5 postinfection. Viral titers and β -Actin mRNA were determined by real-time quantitative RT-PCR. Viral load was expressed as normalized fold change in \log_{10} . Standard deviations of triplicate samples were shown. Asterisk * indicates $p < 0.05$.