
MERS-CoV Antibody Responses 1 Year after Symptom Onset, South Korea, 2015

Pyoeng Gyun Choe,¹ R.A.P.M. Perera,¹ Wan Beom Park, Kyoung-Ho Song, Ji Hwan Bang,
Eu Suk Kim, Hong Bin Kim, Long Wei Ronald Ko, Sang Won Park, Nam-Joong Kim,
Eric H.Y. Lau, Leo L.M. Poon, Malik Peiris, Myoung-don Oh

We investigated the kinetics of the Middle East respiratory syndrome coronavirus (MERS-CoV) neutralizing and spike protein antibody titers over the course of 1 year in 11 patients who were confirmed by reverse transcription PCR to have been infected during the outbreak in South Korea in 2015. Robust antibody responses were detected in all survivors who had severe disease; responses remained detectable, albeit with some waning, for ≤ 1 year. The duration of viral RNA detection (but not viral load) in sputum significantly correlated with the antibody response magnitude. The MERS S1 ELISA antibody titers correlated well with the neutralizing antibody response. Antibody titers in 4 of 6 patients who had mild illness were undetectable even though most had evidence of pneumonia. This finding implies that MERS-CoV seroepidemiologic studies markedly underestimate the extent of mild and asymptomatic infection. Obtaining convalescent-phase plasma with high antibody titers to treat MERS will be challenging.

Middle East respiratory syndrome (MERS) remains a disease of global public health concern for which no proven specific countermeasures are available. As of December 5, 2016, $\approx 1,800$ laboratory-confirmed cases have been reported (1). MERS coronavirus (MERS-CoV) is an enzootic pathogen present in dromedary camels in many parts of the world, including the Middle East, Iran, Pakistan, and Africa (2,3). Zoonotic infections have been repeatedly reported on the Arabian Peninsula and have led to large nosocomial outbreaks. One notable example occurred in South Korea in 2015, initiated by a traveler returning home from the Arabian Peninsula (4). The infection in this traveler led to an outbreak of 186 cases and 36 deaths that

had a substantial impact on the local economy. A cohort of 17 patients from this outbreak was intensively followed up to obtain detailed clinical, immunologic, and virologic characterization of their disease course (5,6). The kinetics of the serologic responses during the acute phase have already been reported, and they showed that robust but delayed antibody responses could be detected in patients who were more severely ill (7). Another study reported a significant linear correlation between the \log_{10} viral loads and the serologic response in the acute phase of illness (8). The kinetics of the long-term serologic responses to MERS-CoV infections is poorly understood and remains of clinical interest. We report the results of a 1-year follow-up on the antibody responses in 11 of these patients.

Material and Methods

Patients

The acute-phase serologic responses of a cohort of 17 patients with reverse transcription PCR (RT-PCR)-confirmed MERS-CoV disease admitted to Seoul National University (SNU) Hospital in Seoul, South Korea; SNU Boramae Medical Center in Seoul; and SNU Bundang Hospital in Seongnam, South Korea, were previously reported (7). Nine of these patients had severe disease (defined as requiring supplemental oxygen or mechanical ventilation). The clinical, viral load, and cytokine profiles were previously reported (5,6).

We followed up 11 of these patients, 5 with severe disease (patients C, D, F, G, and I) and 6 with mild disease (patients K, L, M, N, O, and P), for 1 year. Their serum samples were collected at ≈ 6 months and ≈ 12 months after disease onset and used to investigate the long-term kinetics and duration of antibody responses that form the basis of this report. The clinical characteristics and early immunologic responses of the original and present cohorts of patients are summarized (online Technical Appendix Table 1, <https://wwwnc.cdc.gov/EID/article/23/7/17-0310-Techapp1.pdf>). The reasons for the lack of follow-up for

Author affiliations: Seoul National University College of Medicine, Seoul, South Korea (P.G. Choe, W.B. Park, K.-H. Song, J.H. Bang, E.S. Kim, H.B. Kim, S.W. Park, N.-J. Kim, M.-D. Oh); University of Hong Kong School of Public Health, Hong Kong, China (R.A.P.M. Perera, L.W.R. Ko, E.H.Y. Lau, L.L.M. Poon, M. Peiris)

DOI: <https://dx.doi.org/10.3201/eid2307.170310>

¹These authors contributed equally to this article.

the other 6 patients were transfer of care to another clinical unit (patient A), refusal of follow-up (patients J and Q), and death (patients B, E, and H). Patients B and E died during the acute phase of the illness, and patient H was discharged to receive rehabilitation care but was then given a diagnosis of aspiration pneumonia and died 2 months after disease onset. This study was approved by the Institutional Ethics Review Board of Seoul National University Hospital (approval no. 1506-093-681).

Viruses

The human CoV-EMC/2012 strain was used for 50% tissue culture infectious dose assays, microneutralization assays, and plaque-reduction neutralization tests (PRNTs). A subset of serum samples was also tested with a strain from the outbreak in South Korea, MERS-CoV Hu/KOR/SNU1_035/2015.

Serologic Tests

We heat inactivated serum samples for 30 min at 56°C before carrying out serologic tests. We performed the MERS-CoV PRNT (using a $\geq 90\%$ plaque-reduction cutoff [PRNT₉₀]), microneutralization test, and pseudoparticle neutralization test (ppNT) as described (7,9) (online Technical Appendix).

We used the MERS-CoV S1 ELISA kit (EI 2604-9601G; EUROIMMUN, Luebeck, Germany) for the detection of human IgG against MERS-CoV spike protein. We assayed serum samples in duplicate and performed the assay according to the manufacturer's instructions. The assay included a calibrator, which defines the upper limit of the reference range for noninfected humans, and this upper limit served as the cutoff value. The assay was made semiquantitative by calculating the ratio of the extinction of the patient sample over the extinction of the calibrator. Ratios < 0.8 were considered negative, ratios ≥ 1.1 were considered positive, and ratios ≥ 0.8 to < 1.1 were considered borderline. We included known positive and negative control serum samples in all assays and denoted antibody titers in the reciprocal.

Statistical Analysis

We calculated peak viral loads in sputum; PRNT₉₀, ppNT, and microneutralization antibody titers; and MERS S1 ELISA optical density (OD) ratios of the 11 MERS patients by using descriptive statistics. Spearman correlation coefficients were calculated to correlate the peak viral loads in sputum during the acute phase of illness with serologic responses (PRNT₉₀ antibody titers and MERS S1 ELISA OD ratios) at different times after disease onset. We also tested the correlation between duration of viral shedding and serologic responses at a 5% significance level. We

excluded missing data from the main analyses. A sensitivity analysis was performed by imputing values from the most recent tests.

Results

All 5 patients with severe disease, but only 2 (33%) of 6 with mild disease ($p = 0.06$ by Fisher exact test), had PRNT₉₀ antibody titers ≥ 40 at the 1-year follow-up (Figure, panel A). PRNT₉₀ antibody titers of patients C and F, who had acute-phase antibody titers of ≥ 320 , declined ≥ 4 -fold 1 year later. Patients D, G, K, and N who had acute phase peak antibody titers in the range of 80–160 only had ≤ 2 -fold declines in titer. Patients C, D, F, G, I, K, and N (the 5 patients with severe disease and 2 of the 6 with mild disease who had PRNT₉₀ antibody titers of ≥ 40 in their acute-phase serum samples [collected 21–50 days after disease onset]) continued to have detectable antibodies by PRNT₉₀ (titer $\geq 1:40$), ppNT (titer $\geq 1:40$), microneutralization assay (titer $\geq 1:20$), and S1 ELISA (ratio ≥ 1.1) 1 year after illness onset (Table; Figure, panel B). MERS antibody titers waned during the first 6 months after disease onset, especially in patients who had had high antibody titers. The waning of antibody titers between 6 months and 1 year after disease onset was less steep.

At 1 year after infection, the 4 patients who had mild disease (or who did not require supplemental oxygen or mechanical ventilation) all had negative results by microneutralization assay and S1 ELISA, but 1 was positive by ppNT (titer of 10) and 2 by PRNT₉₀ (titer 1:10) (Table). Although designated as having mild disease, all of these patients, with 1 exception (patient P), had chest infiltrates on x-ray, indicating lung parenchymal pathology.

The kinetics of antibody production seen with the PRNT₉₀, ppNT, microneutralization test, and S1 ELISA were comparable (Table), suggesting that any of these tests could be used for detection of MERS-CoV antibodies in patients with past infection. One year after infection, all patients who had antibody titers of ≥ 20 by PRNT₉₀ also had antibodies detectable by ppNT, microneutralization assay, and S1 ELISA. One patient (L) with a marginal PRNT₉₀ titer of 1:10 was not positive by ppNT, microneutralization assay, or ELISA. At 1 year after infection, the correlation coefficients were 0.89 between PRNT₉₀ and ppNT titers, 0.94 between PRNT₉₀ and microneutralization assay titers, and 0.96 between PRNT₉₀ and S1 ELISA titers.

The virus we used for serologic testing was the prototype MERS-CoV EMC clade A virus, and the virus that patients were exposed to (and that caused the outbreak in South Korea) was a clade B virus. To confirm that the neutralizing antibody titers against the clade A and B viruses were not significantly different, we tested 10 paired serum samples (from 5 MERS-CoV patients who had various levels of microneutralization antibody responses to EMC)

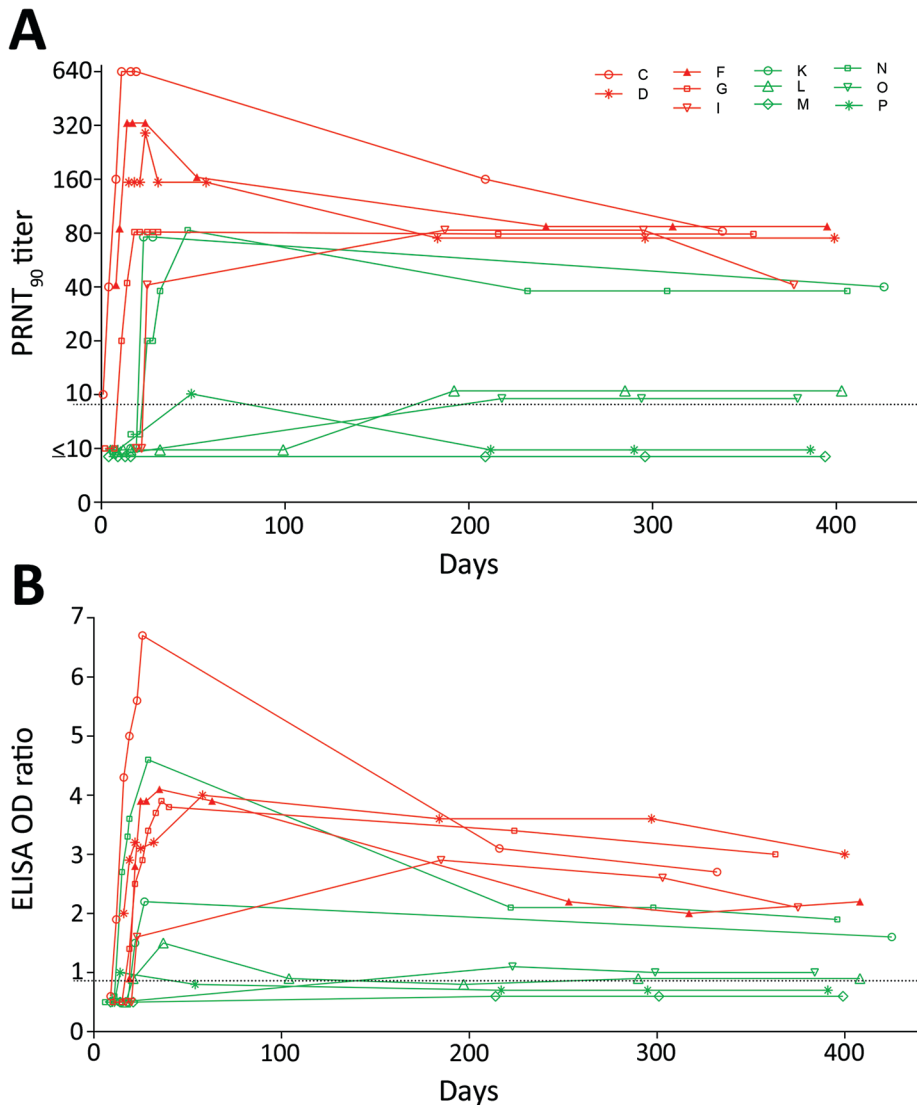


Figure. Middle East respiratory syndrome (MERS) coronavirus antibody titers in serially collected serum samples from 11 patients with reverse transcription PCR–confirmed symptomatic MERS, South Korea, 2015. PRNT₉₀ titers (A) and MERS spike protein (S1) ELISA OD ratios (B) were determined at multiple time points 0 to >400 days after disease onset. The limit of detection was 10 for the PRNT, and the cutoff between negative and borderline samples for the S1 ELISA was an OD ratio of 0.8. Letters in key indicate patients; red indicates those with severe disease, and green indicates those with nonsevere disease. OD, optical density; PRNT₉₀, ≥90% plaque-reduction neutralization test.

by microneutralization assay using the clade A virus and a clade B virus from the outbreak in South Korea. The titers were similar (within a 2-fold dilution), confirming that the neutralizing epitopes of MERS-CoV are antigenically conserved (online Technical Appendix Table 2).

The peak viral loads in sputum did not correlate with PRNT₉₀ antibody titers or S1 ELISA OD ratios at the acute phase of illness, at ≈6 months after illness, or at ≈12 months after illness (online Technical Appendix Table 3). However, we found strong positive correlations between duration of virus detection and antibody titers (as measured by the PRNT₉₀ and S1 ELISA) at these time points (online Technical Appendix Table 4). We defined the duration of virus detection as the day from symptom onset to negative PCR conversion. The median duration of virus shedding was 19 days (interquartile range 16.5–27.5 days). Only 2 of the patients (D and F) received

corticosteroid therapy, and both had robust antibody responses (Table). However, because of the small number of patients given this treatment, evaluating its quality with a statistical analysis was not possible.

Discussion

With this cohort of patients, we had previously reported that the severity of illness was associated with higher neutralizing antibody responses and ELISA ODs in the acute phase of illness (7). The analysis of antibody titers at ≈1 year after illness shows that these higher antibody titers continue to persist for at least 1 year. In the patients with the highest peak antibody titers, antibody titers waned during the first 6 months after infection but then stabilized over the next 6 months. This pattern of antibody production contrasts with the pattern reported for 1 patient with a microneutralization titer of 400, whose titers declined

to an undetectable level within months by microneutralization test, immunofluorescent antibody (IFA) assay, and ELISA (10).

Patients K, L, M, N, O, and P were designated as having nonsevere disease because they were not given supplemental oxygen therapy, even though all of them, with the exception of patient P, had evidence of lung parenchymal disease. Only 2 of these patients (K and N) manifested robust antibody responses during the acute phase of the illness and early convalescence, and these titers were still present 1 year later. For the other patients, robust serologic antibody titers did not develop during the acute phase of the illness, and the patients remained seronegative or with marginal antibody titers at 1 year after infection. Because of the poor antibody response that resulted from symptomatic disease, persons with asymptomatic or mild infection without severe lung parenchymal disease are not expected to develop detectable MERS-CoV antibodies, a conclusion with implications for seroepidemiologic studies.

Three other studies have investigated the kinetics of long-term antibody persistence in patients with MERS-CoV illness. Survivors of a MERS-CoV outbreak in Jordan in April 2012 have been followed up with serologic testing at 13 months and 34 months after infection (11).

These patients did not have RT-PCR–confirmed MERS-CoV infection, but they were considered to probably have MERS-CoV infections because they had positive serologic results together with an epidemiologic link to a confirmed MERS patient. Seven patients had symptomatic acute upper respiratory disease during the outbreak; of these, 5 had radiologic evidence of lower lung pathology, and 2 did not have chest radiologic examination data. All 7 patients had detectable antibodies by ELISA and IFA assay, and 6 of them had detectable antibodies by microneutralization test at 13 months and 34 months after infection with titers ranging from 20 to 80. However, only patients with robust serologic responses were included in this study (selection bias), and those without were excluded by definition.

In a study in Saudi Arabia, 9 patients with RT-PCR–confirmed MERS-CoV infection were followed up at 3 months, 10 months, and 18 months (for only 2 patients) after infection and tested by MERS-CoV S1 ELISA and IFA assay (12). These 9 patients (2 with severe pneumonia, 3 with nonsevere pneumonia, 1 with upper respiratory symptoms, and 3 with asymptomatic infections) were identified through contact tracing. All 5 patients with pneumonia were antibody positive by ELISA and IFA assay at 3 months after infection, 4 were positive by ELISA at 10

Table. Characteristics and serologic responses of patients from MERS-CoV outbreak by time after disease onset, South Korea, 2015*

Pt.	Severe disease	Peak viral load†	Steroid use	Titers and ODs at various time points after disease onset											
				PRNT ₉₀ antibody titer			MERS-CoV spike ppNT			Microneutralization assay titer			MERS-CoV S1 ELISA OD‡		
				21–50 d	180–248 d§	285–403 d§	21–50 d	180–248 d	285–403 d	21–50 d	180–248 d	285–403 d	21–50 d	180–248 d	285–403 d
C	Yes	6.1	No	640	160 (216 d)	80 (332 d)	640	160	80	320	160	40	6.2	2.9	2.5
D	Yes	8.2	Yes (11–23)¶	160	80 (181 d)	80 (294 d), 80 (397 d)	160	160	80	80	80	80	2.6	3.0	2.5
F	Yes	4.8	Yes (14–16)¶	320	80 (248 d)	80 (403 d)	320	320	40	160	40	40	3.6	1.7	1.5
G	Yes	7.2	No	80	80 (219 d)	80 (358 d)	80	80	160	80	80	80	3.4	2.9	2.5
I	Yes	5.2	No	NA#	80 (180 d)	80 (298 d), 40 (370 d)	40	40	40	40	40	40	1.1	2.4	1.6
K	No	6.7	No	80	NA	40 (420 d)	160	NA	40	40	NA	20	1.7	NA	1.1
L	No	4.6	No	<10	10 (192 d)	10 (285 d), 10 (403 d)	10	<10	<10	<10	<10	<10	1.0	0.3	0.4
M	No	5.4	No	NA**	<10 (209 d)	<10 (296 d), <10 (394 d)	<10	<10	<10	<10	<10	<10	0	0.1	0.1
N	No	6.6	No	80	40 (220 d)	40 (296 d), 40 (394 d)	40	80	40	80	40	20	4.1	1.6	1.4
O	No	8.2	No	NA	10 (218 d)	10 (294 d), 10 (379 d)	NA	<10	10	NA	<10	<10	NA	0.6	0.5
P	No	5.5	No	10	<10 (212 d)	<10 (290 d), <10 (386 d)	<10	<10	<10	<10	<10	<10	0.3	0.1	0.1

*MERS-CoV, Middle East respiratory syndrome coronavirus; NA, not assayed; OD, optical density; ppNT, pseudoparticle neutralization test; PRNT₉₀, ≥90% plaque-reduction neutralization test; Pt., patient; S1, spike protein; steroid, corticosteroid; upE, region upstream of the E gene.

†Viral loads (log₁₀ upE RNA copies/mL) were quantified from sputum samples.

‡MERS-CoV S1 ELISA OD ratios <0.8 were considered negative, ≥0.8 to <1.1 were considered borderline, and ≥1.1 were considered positive.

§Exact day(s) after disease onset that serum was collected are indicated in parentheses.

¶Days after disease onset during which steroids were used.

#PRNT₉₀ antibody titer was 40 on day 18.

**PRNT₉₀ antibody titer was 10 on day 16.

months after infection, and 3 were positive by IFA assay at 10 months after infection. In contrast, 0 of 4 patients with mild upper respiratory tract infection or asymptomatic infection were positive by ELISA or IFA assay at 3 or 10 months after infection. These data are comparable with our own, suggesting that milder infections are less likely to elicit serologic responses. However, that study did not provide data on virus neutralizing antibodies (12). A second study in Saudi Arabia reported that only 4 of 11 healthcare workers with real-time RT-PCR–confirmed MERS-CoV infection had detectable ELISA antibody titers \approx 1 year after infection; of these 4 healthcare workers, 3 had detectable microneutralization antibody titers and only 1 had a high antibody titer (800) (10).

Waning antibody titers have also been demonstrated in patients with severe acute respiratory syndrome–CoV infection (13). Antibody titers peaked at 4 months after disease onset and declined to undetectable levels in 19% and 11% of serum samples by IgG test and microneutralization test, respectively, 30 months after infection. Geometric mean microneutralization antibody titers dropped from 1,232 at month 4 to 32 at month 30 after infection and remained at that level until month 36 (13). In volunteers experimentally infected with human CoV 229E, neutralizing antibody titers peaked at 3 weeks after infection and fell considerably by 12 weeks after infection, declining close to baseline levels by 1 year (14). However, human CoV 229E infects mainly the upper respiratory tract, unlike the pathogens of severe acute respiratory syndrome and MERS, which are more invasive of the lung parenchyma and often disseminate systemically.

Convalescent-phase plasma therapy has been proposed as a treatment option for the acute respiratory diseases, like MERS, that do not have specific antimicrobial treatments available (15,16). Our data indicate that plasma with high MERS-CoV antibody titers are only likely to be available from patients who have recovered from severe MERS disease, and these titers substantially wane within the first 6 months of illness, although lower levels of MERS-CoV antibodies are maintained over longer periods. To use convalescent-phase patient plasma for treatment, it will be necessary to assess the antibody titer of potential donors before collection to ensure good antibody titer. A neutralization test is likely to be the optimal assay for assessing plasma used for therapy, but because our data indicated that the S1 ELISA correlates well with neutralization titers, the S1 ELISA might be a suitable screening test for selecting persons for plasma donation.

One limitation of this work is the virus used for neutralization tests. The clade A virus MERS-CoV EMC was used for assays, and the virus the patients were infected with and that caused the outbreak in South Korea was a clade B virus (the dominant virus clade currently circulating in the

Arabian Peninsula). It has been shown that clade A and B viruses do not differ antigenically at the neutralization epitope, although they are genetically distinct (17,18). Using a subset of serum samples from this study, we confirmed that neutralizing antibody titers obtained with the clade A EMC virus were similar to those obtained with a clade B virus strain from the outbreak in South Korea.

In conclusion, our findings support and extend the research of others. We suggest that serologic tests for MERS-CoV antibodies can only identify some of the patients who have had MERS-CoV infections. Serologic responses to this virus are variable, not robust, and often undetectable when disease is mild. Thus, MERS-CoV seroepidemiologic studies will only detect a fraction of infections that are occurring in a population and will probably markedly underestimate the extent of mild infection that is taking place. Our findings also show that the MERS S1 ELISA is as good as neutralization tests at detecting antibodies a year after infection, but positive ELISA results do require confirmation with neutralization tests if false positives are to be avoided in seroepidemiologic assays (M. Peiris, unpub. data). Convalescent-phase plasma can be harvested for many months to a year after disease from patients surviving MERS-CoV infection, but plasma with a high antibody titer is only likely to be obtained during the first few months of convalescence from persons who had severe disease. Because patients during this time frame are likely to be frail, this approach will be challenging.

Acknowledgments

We thank Ron Fouchier for providing the human CoV-EMC/2012 strain.

This work was supported by the Korean Healthcare Technology R&D Project through the Korea Health Industry Development Institute, the Ministry of Health and Welfare, South Korea (grant no. HI15C3227); the US National Institute of Allergy and Infectious Diseases, National Institutes of Health (contract HHSN27220140000C); and a commissioned grant from the Health and Medical Research Fund of the Government of Hong Kong.

Dr. Choe is a clinical scientist at Seoul National University Hospital. His research interests focus on preventing healthcare-associated infection and responding to emerging infectious diseases.

References

1. World Health Organization. WHO MERS-CoV global summary and risk assessment. 2016 Dec 5 [cited 2017 Jan 21]. <http://www.who.int/emergencies/mers-cov/mers-summary-2016.pdf?ua=1>
2. Reusken CB, Messadi L, Feyisa A, Ularamu H, Godeke GJ, Danmarwa A, et al. Geographic distribution of MERS coronavirus among dromedary camels, Africa. *Emerg Infect Dis*. 2014;20:1370–4. <http://dx.doi.org/10.3201/eid2008.140590>

3. Saqib M, Sieberg A, Hussain MH, Mansoor MK, Zohaib A, Lattwein E, et al. Serologic evidence for MERS-CoV infection in dromedary camels, Punjab, Pakistan, 2012–2015. *Emerg Infect Dis*. 2017;23:550–1. <http://dx.doi.org/10.3201/eid2303.161285>
4. Korea Centers for Disease Control and Prevention. Middle East respiratory syndrome coronavirus outbreak in the Republic of Korea, 2015. *Osong Public Health Res Perspect*. 2015;6:269–78. <http://dx.doi.org/10.1016/j.phrp.2015.08.006>
5. Oh MD, Park WB, Choe PG, Choi SJ, Kim JI, Chae J, et al. Viral load kinetics of MERS coronavirus infection. *N Engl J Med*. 2016;375:1303–5. <http://dx.doi.org/10.1056/NEJMc1511695>
6. Kim ES, Choe PG, Park WB, Oh HS, Kim EJ, Nam EY, et al. Clinical progression and cytokine profiles of Middle East respiratory syndrome coronavirus infection. *J Korean Med Sci*. 2016;31:1717–25. <http://dx.doi.org/10.3346/jkms.2016.31.11.1717>
7. Park WB, Perera RA, Choe PG, Lau EH, Choi SJ, Chun JY, et al. Kinetics of serologic responses to MERS coronavirus infection in humans, South Korea. *Emerg Infect Dis*. 2015;21:2186–9. <http://dx.doi.org/10.3201/eid2112.151421>
8. Corman VM, Albarrak AM, Omrani AS, Albarrak MM, Farah ME, Almasri M, et al. Viral shedding and antibody response in 37 patients with Middle East respiratory syndrome coronavirus infection. *Clin Infect Dis*. 2016;62:477–83. <https://dx.doi.org/10.1093/cid/civ951>
9. Perera RA, Wang P, Gomaa MR, El-Shesheny R, Kandeil A, Bagato O, et al. Seroepidemiology for MERS coronavirus using microneutralisation and pseudoparticle virus neutralisation assays reveal a high prevalence of antibody in dromedary camels in Egypt, June 2013. *Euro Surveill*. 2013;18:20574. <http://dx.doi.org/10.2807/1560-7917.ES2013.18.36.20574>
10. Arabi YM, Hajeer AH, Luke T, Raviprakash K, Balkhy H, Johani S, et al. Feasibility of using convalescent plasma immunotherapy for MERS-CoV infection, Saudi Arabia. *Emerg Infect Dis*. 2016;22:1554–61. <http://dx.doi.org/10.3201/eid2209.151164>
11. Payne DC, Iblan I, Rha B, Alqasrawi S, Haddadin A, Al Nsour M, et al. Persistence of antibodies against Middle East respiratory syndrome coronavirus. *Emerg Infect Dis*. 2016; 22:1824–6. <http://dx.doi.org/10.3201/eid2210.160706>
12. Alshukairi AN, Khalid I, Ahmed WA, Dada AM, Bayumi DT, Malic LS, et al. Antibody response and disease severity in healthcare worker MERS survivors. *Emerg Infect Dis*. 2016;22:1113–5. <http://dx.doi.org/10.3201/eid2206.160010>
13. Cao WC, Liu W, Zhang PH, Zhang F, Richardus JH. Disappearance of antibodies to SARS-associated coronavirus after recovery. *N Engl J Med*. 2007;357:1162–3. <http://dx.doi.org/10.1056/NEJMc070348>
14. Callow KA, Parry HF, Sergeant M, Tyrrell DA. The time course of the immune response to experimental coronavirus infection of man. *Epidemiol Infect*. 1990;105:435–46. <http://dx.doi.org/10.1017/S0950268800048019>
15. Mair-Jenkins J, Saavedra-Campos M, Baillie JK, Cleary P, Khaw FM, Lim WS, et al.; Convalescent Plasma Study Group. The effectiveness of convalescent plasma and hyperimmune immunoglobulin for the treatment of severe acute respiratory infections of viral etiology: a systematic review and exploratory meta-analysis. *J Infect Dis*. 2015;211:80–90. <http://dx.doi.org/10.1093/infdis/jiu396>
16. Arabi Y, Balkhy H, Hajeer AH, Bouchama A, Hayden FG, Al-Omari A, et al. Feasibility, safety, clinical, and laboratory effects of convalescent plasma therapy for patients with Middle East respiratory syndrome coronavirus infection: a study protocol. *Springerplus*. 2015;4:709. <http://dx.doi.org/10.1186/s40064-015-1490-9>
17. Hemida MG, Perera RA, Al Jassim RA, Kayali G, Siu LY, Wang P, et al. Seroepidemiology of Middle East respiratory syndrome (MERS) coronavirus in Saudi Arabia (1993) and Australia (2014) and characterisation of assay specificity. *Euro Surveill*. 2014;19:20828. <http://dx.doi.org/10.2807/1560-7917.ES2014.19.23.20828>
18. Muth D, Corman VM, Meyer B, Assiri A, Al-Masri M, Farah M, et al. Infectious Middle East respiratory syndrome coronavirus excretion and serotype variability based on live virus isolates from patients in Saudi Arabia. *J Clin Microbiol*. 2015;53:2951–5. <http://dx.doi.org/10.1128/JCM.01368-15>

Address for correspondence: Malik Peiris, School of Public Health, 7 Sassoon Rd, Pokfulam, Hong Kong, China; email: malik@hku.hk; Myoung-Don Oh, Department of Internal Medicine, Seoul National University College of Medicine, Seoul National University Hospital, 101 Daehak-ro, Jongno-gu, Seoul 110-799, South Korea; email: mdohmd@snu.ac.kr

EID Podcast: Unraveling the Mysteries of Middle East Respiratory Syndrome Coronavirus

Middle East respiratory syndrome coronavirus (MERS-CoV) is a novel CoV known to cause severe acute respiratory illness in humans; approximately 40% of confirmed cases have been fatal. Human-to-human transmission and multiple outbreaks of respiratory illness have been attributed to MERS-CoV, and severe respiratory illness caused by this virus continues to be identified. As of February 23, 2014, the World Health Organization has reported 182 laboratory-confirmed cases of MERS-CoV infection, including 79 deaths, indicating an ongoing risk for transmission to humans in the Arabian Peninsula.



Visit our website to listen:

<http://www2c.cdc.gov/podcasts/player.asp?f=8631627>

**EMERGING
INFECTIOUS DISEASES**

MERS-CoV Antibody Responses 1 Year after Symptom Onset, South Korea, 2015

Technical Appendix

Methods

The plaque-reduction neutralization test (PRNT) was performed in duplicate in a biosafety level 3 facility by using 24-well tissue culture plates (TPP Techno Plastic Products AG, Trasadingen, Switzerland). Serial dilutions of serum samples were incubated with 50–70 plaque-forming units of virus for 1 h at 37°C. The virus-serum mixtures were added on to Vero cell monolayers and incubated 1 h at 37°C in 5% CO₂ incubator. Then the plates were overlaid with 1% agarose in cell culture medium and incubated for 3 days when the plates were fixed and stained. Antibody titers were defined as the highest serum dilution that resulted in $\geq 90\%$ (PRNT₉₀) reduction in the number of plaques (*I*).

For the microneutralization assay, 2-fold dilutions of serum samples were incubated with an equal volume of 200 tissue culture infectious dose 50s of Middle East respiratory syndrome coronavirus (MERS-CoV) (2). After 1 h incubation at 37°C, the virus-serum mixture was added in quadruplicate to preformed Vero cell monolayers in 96-well microtiter plates (TPP Techno Plastic Products AG). Cytopathic effect was observed at 3 days postinfection. The highest serum dilution that completely protected the cells from cytopathic effect in ≥ 2 of the 4 wells was taken as the neutralizing titer. Virus back titrations were carried out in each assay to confirm that the virus challenge dose was within expected range.

The virus pseudoparticle neutralization test (ppNT) was performed as previously described (2). Lentivirus pseudoparticles containing codon optimized MERS-CoV (EMC strain) spike protein and a luciferase reporter gene were incubated with serially diluted serum samples for 1 h at 4°C and then added to Vero E6 cells (CRL-1586; American Type Culture Collection, Manassas, VA, USA) in triplicate. Residual virus replication was assayed by the luciferase counts at 2 days postinfection. The highest serum dilution giving a 90% reduction of luciferase activity was regarded as the ppNT antibody titer.

References

1. Park WB, Perera RA, Choe PG, Lau EH, Choi SJ, Chun JY, et al. Kinetics of serologic responses to MERS coronavirus infection in humans, South Korea. *Emerg Infect Dis.* 2015;21:2186–9. [PubMed http://dx.doi.org/10.3201/eid2112.151421](http://dx.doi.org/10.3201/eid2112.151421)
2. Perera RA, Wang P, Gomaa MR, El-Shesheny R, Kandeil A, Bagato O, et al. Seroepidemiology for MERS coronavirus using microneutralisation and pseudoparticle virus neutralisation assays reveal a high prevalence of antibody in dromedary camels in Egypt, June 2013. *Euro Surveill.* 2013;18:20574. [PubMed http://dx.doi.org/10.2807/1560-7917.ES2013.18.36.20574](http://dx.doi.org/10.2807/1560-7917.ES2013.18.36.20574)

Technical Appendix Table 1. Characteristics and PRNT₉₀ titers of the patients from the MERS-CoV outbreak, South Korea, 2015*

Patient	Sex/age, y	Underlying disease	CXR infiltrates	Oxygen therapy	Mechanical ventilation	Corticosteroid therapy	Antiviral use	Outcome (day post disease onset)	Included in present study	PRNT ₉₀ antibody titer 21–50 days post disease onset
A	M/38	–	Yes	Yes	Yes	Yes	Yes	Transfer (61)	No	80
B	M/65	–	Yes	Yes	Yes	Yes	Yes	Died (142)	No	≥320
C	M/55	–	Yes	Yes	Yes	No	Yes	Discharge (26)	Yes	640
D	M/35	Bacterial pneumonia	Yes	Yes	Yes	Yes	Yes	Discharge (33)	Yes	160
E	F/79	CHD, dementia, CKD, bladder cancer	Yes	Yes	Yes	Yes	Yes	Died (17)	No	NA (<10 on day 16)
F	M/55	DM, COPD, lung abscess	Yes	Yes	No	Yes	No	Discharge (31)	Yes	320
G	M/56	–	Yes	Yes	No	No	Yes	Discharge (40)	Yes	80
H	M/71	DM, CVA, aspiration pneumonia	Yes	Yes	No	No	No	Discharge (38)	No	160
I	F/77	DM, asthma	Yes	Yes	No	No	No	Discharge (18)	Yes	NA (40 on day 18)
J	M/76	DM, CHD	Yes	No	No	No	No	Discharge (28)	No	40
K	M/59	CHD	Yes	No	No	No	Yes	Discharge (19)	Yes	80
L	F/56	–	Yes	No	No	No	No	Discharge (21)	Yes	<10
M	M/56	DM, CHD, CLD, TB	Yes	No	No	No	No	Discharge (16)	Yes	NA (<10 on day 16)
N	F/54	–	Yes	No	No	No	No	Discharge (21)	Yes	80
O	M/46	–	Yes	No	No	No	No	Discharge (12)	Yes	NA
P	M/35	–	No	No	No	No	Yes	Discharge (14)	Yes	10
Q	M/52	DM, liver abscess	Yes	No	No	No	Yes	Discharge (21)	No	160

*CHD, coronary heart disease; CKD, chronic kidney disease; CLD, chronic lung disease; COPD, chronic obstructive pulmonary disease; CVA, cerebrovascular accident; CXR, chest X-ray; DM, diabetes mellitus; NA, not applicable; PRNT₉₀, ≥90% plaque-reduction neutralization test; TB, tuberculosis.

Technical Appendix Table 2. MERS-CoV antibody titers in patient serum samples*

Patient ID	Day serum collected after disease onset	Reciprocal MERS-CoV MN antibody titer	
		MERS-CoV EMC	MERS-CoV Hu/KOR/SNU1_035/2015
F	58	80	160
F	403	40	40
M	16	<10	<10
M	394	<10	<10
L	99	<10	<10
L	403	<10	<10
O	8	<10	<10
O	379	<10	<10
I	18	20	40
I	298	20	40

*Patient titers were assessed with prototype strain EMC and a virus isolate Hu/KOR/SNU1_035/2015 from the outbreak in South Korea in 2015. ID, identification; MERS-CoV, Middle East respiratory syndrome coronavirus; MN, microneutralization.

Technical Appendix Table 3. Spearman correlation between peak viral loads in the acute phase of illness and serologic responses at different time points post disease onset*

Time post disease onset	PRNT ₉₀		ELISA OD ratio	
	Spearman correlation	p value	Spearman correlation	p value
Acute phase†	0.20	0.56	0.13	0.71
≈6 mo	0.17	0.64	0.45	0.19
≈1 y	0.17	0.62	0.37	0.26

*Peak viral load (log₁₀ UpE virus RNA copies/mL) was measured in sputum. All correlations were not statistically significant and changed by <0.1 with imputed values from nearest testing occasions. OD, optical density; PRNT₉₀, ≥90% plaque-reduction neutralization test; upE, region upstream of the E gene.

†Peak antibody titer during the acute phase was used in these analyses.

Technical Appendix Table 4. Spearman correlation between durations of viral shedding and serologic responses at different time points post disease onset*

Time post disease onset	PRNT ₉₀		ELISA OD ratio	
	Spearman correlation	p value	Spearman correlation	p value
Acute phase†	0.74	0.010	0.77	0.006
≈6 mo	0.74	0.015	0.79	0.007
≈1 y	0.79	0.004	0.80	0.003

*All correlations were statistically significant and changed by <0.06 with imputed values from nearest testing occasions. OD, optical density; PRNT₉₀, ≥90% plaque-reduction neutralization test.

†Peak antibody titer during the acute phase was used in these analyses.