



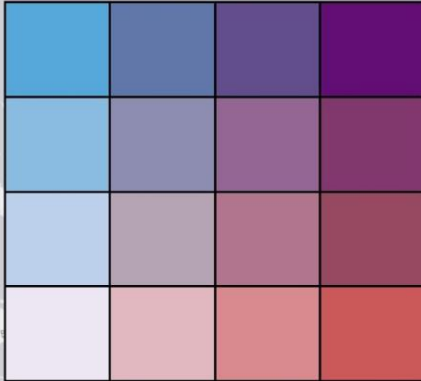
**Age-Adjusted Prevalence of Diagnosed Diabetes and Obesity
Among Adults, by County, United States
(2004, 2009, 2014, 2019)**

Methods

- Data from CDC's Behavioral Risk Factor Surveillance System (BRFSS) and from the US Census Bureau's Population Estimates Program were used for county-level estimates of diagnosed diabetes and obesity.
- Prevalence Definitions
 - Diagnosed diabetes: response of "yes" to the question, "Has a doctor ever told you that you have diabetes?" Women who indicated that they only had diabetes during pregnancy were excluded.
 - Obesity: body mass index of ≥ 30 derived from self-report of height and weight.
- Estimates were restricted to adults aged ≥ 20 years.
- Estimates were based on the power prior log-weights (PLOW) approach*.
- Rates were age adjusted to the 2000 US standard population using age groups 20-44, 45-64, and ≥ 65 years.

* Xie H, Barker LE, Rolka DB. Incorporating design weights and historical data into model based small area estimation. J Data Sci. 2020;18:115-131.

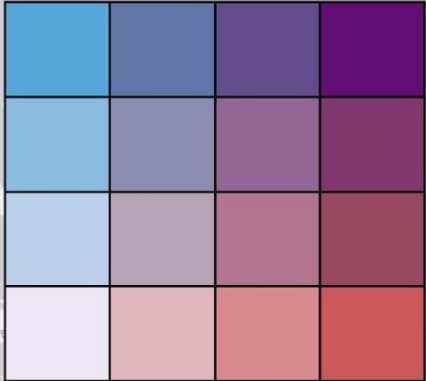
2004



Diagnosed Diabetes and Obesity estimates are percentage; natural breaks were used to create categories using all data from 2004-2019; Diagnosed Diabetes (%): <7.1, 7.1-8.6, 8.6-10.5, >10.5; Obesity (%): <21.2, 21.2-25.5, 25.5-30.5, >30.5

Esri, HERE, Garmin, (c) OpenStreetMap contributors, and the GIS user community

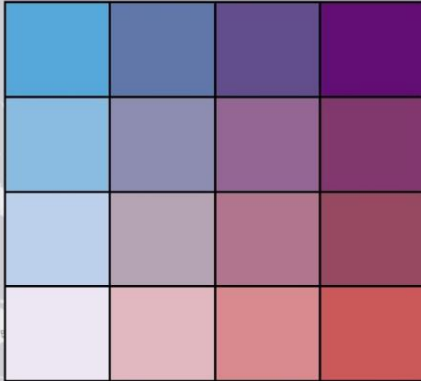
2009



Diagnosed Diabetes and Obesity estimates are percentage; natural breaks were used to create categories using all data from 2004-2019; Diagnosed Diabetes (%): <7.1, 7.1-8.6, 8.6-10.5, >10.5; Obesity (%): <21.2, 21.2-25.5, 25.5-30.5, >30.5

Esri, HERE, Garmin, (c) OpenStreetMap contributors, and the GIS user community

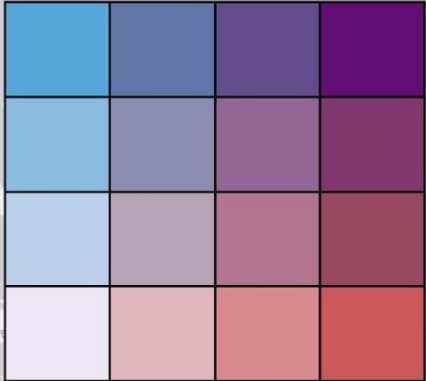
2014



Diagnosed Diabetes and Obesity estimates are percentage; natural breaks were used to create categories using all data from 2004-2019; Diagnosed Diabetes (%): <7.1, 7.1-8.6, 8.6-10.5, >10.5; Obesity (%): <21.2, 21.2-25.5, 25.5-30.5, >30.5

Esri, HERE, Garmin, (c) OpenStreetMap contributors, and the GIS user community

2019



Diagnosed Diabetes and Obesity estimates are percentage; natural breaks were used to create categories using all data from 2004-2019; Diagnosed Diabetes (%): <7.1, 7.1-8.6, 8.6-10.5, >10.5; Obesity (%): <21.2, 21.2-25.5, 25.5-30.5, >30.5

Esri, HERE, Garmin, (c) OpenStreetMap contributors, and the GIS user community