

# Finding Key Resources on the NCHS Website

Phil Walls

Office of Information Services  
National Center for Health Statistics



# Outline of the Session

- Explanation of handouts
- Overview of NCHS
- Introduction to key resources
- Hands-on research using NCHS tools
- Questions and answers

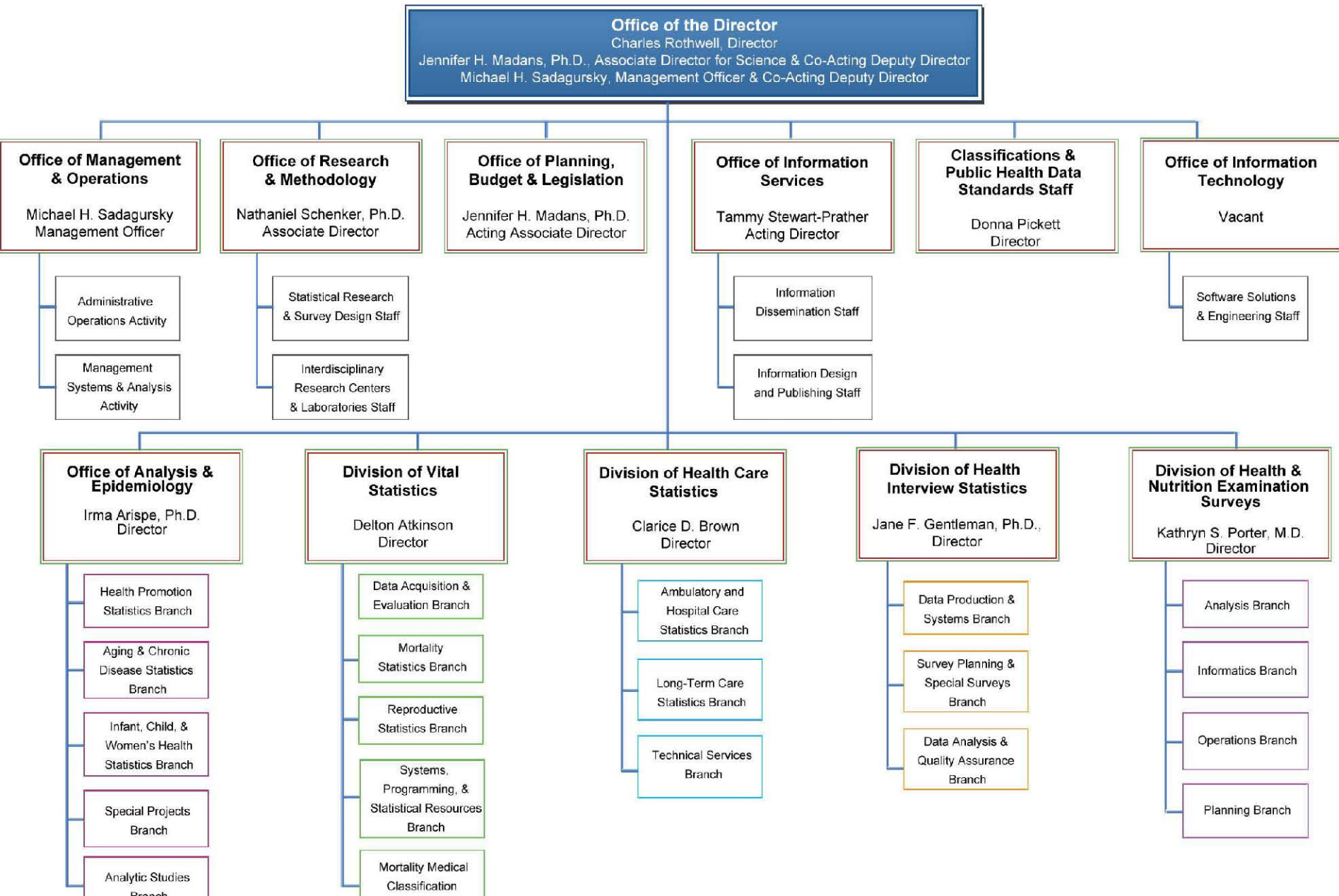
# Handouts

- Copy of slides
- Guide to NCHS Surveys, Data Systems, and Publications.

# Overview of NCHS

- Provides fundamental public health and health policy statistics that meet the needs of a wide range of users
- Tracks changes in health and health care across the nation
- Provides mechanisms for obtaining consistent, uniform statistics

# NATIONAL CENTER FOR HEALTH STATISTICS



# Key NCHS Resources

- **Publications**
  - New Releases
  - Release Schedule
- **FastStats**
- **Surveys and Data Collection Systems**
  - Questionnaires
  - Raw Data
- **Data Access**
  - Health Data Interactive
  - VitalStats
  - CDC Wonder

# NCHS Data Uses



- Comparisons across populations, providers, and geographic areas
- Planning/assessing public health programs
- Identifying health problems, risk factors, and disease patterns



## National Center for Health Statistics ...Monitoring the Nation's Health

### Conference Updates

The 2015 National Conference on Health Statistics (August 24–26) is quickly approaching. Follow our website for the latest updates or download the FastStats app, available for iOS and Android, to plan a custom conference schedule.

[Learn More ▶](#)

[1](#) [2](#) [3](#) [4](#) [5](#)



### INSIDE NCHS: FEATURED TOPICS



#### Nation at a Glance: Uninsured Americans

An estimated 36 million people in the U.S. had no health insurance in 2014. Find out which states had the highest rates of uninsured persons, and which states had the lowest uninsurance rates, in the latest estimates from the National Health Interview Survey's Early Release Program.

[NEXT TOPIC ▶](#)

### New RELEASES

**U.S. and State Trends on Teen Births, 1990–2013**

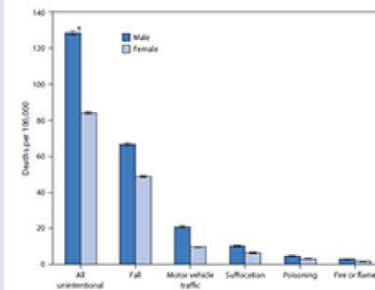
NCHS Data Visualization Gallery, August 2015

**Percentage of Adults Aged 65 and Over With Osteoporosis or Low Bone Mass of the**

### FastStats: STATISTICS BY TOPIC

FastStats provides quick access to statistics on topics of public health importance, including: diseases and conditions, injuries, life stages and populations, and health care and insurance.

### QuickStat of the WEEK



During 2012–2013, among persons aged  $\geq 65$  years, men had higher age-adjusted death rates than women from all unintentional injuries, (128.3 versus 84.1 deaths per 100,000 population, respectively), and from the five leading causes of unintentional injury death. Death



# Links to Key Resources

- **Publications**
  - New Releases
  - Release Schedule
- **FastStats**
- **Surveys and Data Collection Systems**
- **Data Access**

# Surveys and Data Collection Systems

<http://www.cdc.gov/nchs/surveys.htm>

# Surveys and Data Collection Systems

## Left Navigation Boxes

- About
- What's New
- Questionnaires, Datasets, and Related Documentation

National Health and Nutrition Examination Survey	National Health Care Surveys	National Health Interview Survey	National Survey of Family Growth
About NHANES	About the National Health Care Surveys	About NHIS	About NSFG
What's New	What's New	What's New	What's New
Questionnaires, Datasets, and Related Documentation	Surveys	Coming Events	Questionnaires, Datasets, and Related Documentation
Tutorials	Questionnaires, Datasets, and Related Documentation	Questionnaires, Datasets, and Related Documentation	Key Statistics from NSFG
Proposal Guidelines	Access to Confidential Data	Special Topics	Publications and Information Products
Survey Results and Products	Survey Results and Products	NHIS on Disability	Bibliography
Listserv		Survey Reports and Data Linked to NHIS	Research Conferences
		Listserv	Listserv

## **New RELEASES**



### **U.S. and State Trends on Teen Births, 1990–2013**

NCHS Data Visualization Gallery, August 2015

### **Percentage of Adults Aged 65 and Over With Osteoporosis or Low Bone Mass at the Femur Neck or Lumbar Spine: United States, 2005-2010**

Health E-Stat, August 2015

### **Health Insurance Coverage: Estimates From the National Health Interview Survey, January-March 2015**

NHIS Early Release, August 2015

### **Health Insurance Coverage: Early Release of Quarterly Estimates From the National Health Interview Survey, January 2010-March 2015**

NHIS Early Release, August 2015

### **Preliminary Quarterly Microdata File, 2015 Quarter 1**

NHIS Early Release, August 2015

### **Infant Mortality Statistics From the 2013 Period Linked Birth/Infant Death Data Set**

NVSR Vol. 64 No. 9, August 2015

### **Any Visit to the Eye Doctor in the Past 12 Months Among Adults Diagnosed With Diabetes, by Years Since Diabetes Diagnosis and by Age: United States, 2012-2013**

Health E-Stat, August 2015

### **2010 Cohort Linked Birth/Infant Death Data Files and User Guide Now Available**

Data Release, July 2015

# **Publications and New Releases**

**<http://www.cdc.gov/nchs/products>**

# Publications

## National Health Statistics Reports

Number 14 ■ March 11, 2009

### Wireless Substitution: State-level Estimates From the National Health Interview Survey, January–December 2007

by Stephen J. Blumberg, Ph.D., National Center for Health Statistics, and Karen Soderberg, M.P.H., M.A., Ph.D., National Center for Health Statistics

#### Abstract

**Objective**—This report presents estimates of wireless substitution rates by household type in 2007. These rates are based on data from the National Health Interview Survey (NHIS).  
**Methods**—A two-stage sampling design was used to estimate wireless substitution rates based on data from the Current Population Survey (CPS) and the NHIS.  
**Results**—The wireless substitution rate in 2007 was 5.9% (95% confidence interval [CI], 5.5%–6.3%) for all adults (18 years and older) and 12.5% (95% CI, 11.9%–13.1%) for four adults (25–49 years old).  
**Keywords** wireless substitution, mobile phone use, health survey.

#### Introduction

The National Health Interview Survey (NHIS) is the primary source for data on American household telephones. In 2007, the National Center for Health Statistics (NCHS) added questions on cell phone use and characteristics to the survey to better understand the population's use of mobile phones.

## National Vital Statistics Reports

Volume 57, Number 13

### Births, Marriages, Divorces, and Deaths—Provisional Data for July 2008

Table A. Provisional vital statistics for the United States, July 2008

Item	2008		2007	
	Number	Rate	Number	Rate
Births	3,750,000	14.3	3,750,000	14.3
Fertility rate	19.0	71.2	19.0	71.2
Deaths	1,900,000	7.4	1,900,000	7.4
Marriages	2,400	9.4	2,400	9.4
Divorces	280,000	1.1	280,000	1.1
Population (in millions)	261.5		261.5	

#### Technical Notes

Data shown here are provisional and include only events occurring within the United States (50 states and the District of Columbia). Provisional birth, death, and infant death data are based on a combination of reports of events from each reporting area and registered vital events from the National Center for Health Statistics (NCHS) data files. These may not have occurred in the specified month of the report. Provisional birth, death, and infant death data are updated during the course of a data year. Updates to registered events will be included in the month the event occurred. Updates based on counts received from the month in which it occurred. This may result in a low figure for a given month followed by a high figure for the month in which the

Vital and Health Statistics  
Series 10, Number 239  
January 2009

SAFER • HEALTHIER • PEOPLE™

## Health, United States, 2008

With Special Feature on Medical Technology



NCHS Data Brief ■ No. 39 ■ May 2010

### Are Preterm Births on the Decline in the United States? Recent Data From the National Vital Statistics System

Joyce A. Martin, M.P.H.; Michelle J.K. Osterman, M.H.S.; and David. S. Basu, Ph.D.

#### Key findings

- Following a long period of fairly steady increase, the U.S. preterm birth rate declined 5% in the second half-year in 2008 to 12.3 percent from 12.8 percent in 2007.
- This marks the first year decline in the preterm birth rate in nearly three decades.
- Preterm birth rate declined from 2004 to 2008 5% in males of all ages and in age 40, 5+ in three large racial and Hispanic origin groups and for most U.S. states.
- The percentage of preterm births was lower for all types of deliveries from 2004 to 2008, 5% in cesarean and 5% in vaginal deliveries.

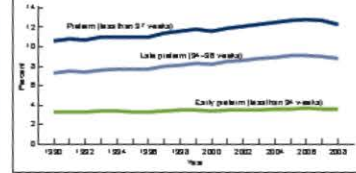
The U.S. preterm birth rate (less than 37 weeks of gestation) rose by more than one-third from the early 1980s through 2004 (1). This rise has been a cause of great concern (2). Preterm infants are at increased risk of life-long disability and early death compared with infants born later in pregnancy (3,4). Many reasons, such as changes in maternal demographics and increases in multiple births, have been proposed for the growth in preterm births (5). Another factor cited is the heightened use of obstetric interventions, such as induction of labor and cesarean delivery earlier in pregnancy (3,4,7). Although it is not possible to know whether these factors would be worth partners if labor was not induced or delivered by cesarean, studies suggest that increased use of these procedures before 37 completed weeks of gestation may have influenced the upswing in preterm birth rates (4,7).

Provisional 2007 and 2008 birth certificate data reveals a shift in the long upward trend in preterm births (6,9). This report describes this change.

**Keywords:** preterm, late preterm, race-specific preterm birth rates

The U.S. preterm rate declines for the second straight year—the first 2-year decline in nearly three decades.

Figure 1. Preterm birth rates, United States, total 1985–2008 and preliminary 2007 and 2008



SOURCE: CDC/NCHS, Birth and Health Statistics Systems.

U.S. DEPARTMENT OF HEALTH AND HUMAN SERVICES  
Centers for Disease Control and Prevention  
National Center for Health Statistics  
SAFER • HEALTHIER • PEOPLE™



U.S. DEPARTMENT OF HEALTH AND HUMAN SERVICES  
Centers for Disease Control and Prevention  
National Center for Health Statistics  
National Vital Statistics System



U.S. DEPARTMENT OF HEALTH AND HUMAN SERVICES  
Centers for Disease Control and Prevention  
National Center for Health Statistics

# Rules for the Class

1. I will not use the CDC search box
2. I will not use any search engines such as Google, Yahoo, or Bing
3. I will navigate through the NCHS website
4. I will not use the blue A-Z index bar at the top of the page (not today, anyway)

# Publications Exercises

1. What were the leading causes of death for people 55-64 years of age in 2008?
2. Find the NHANES report about Low-fat Milk Consumption.

# FastStats

## “Statistics by Topic”

- Alphabetical listing of popular health topics
- Each topic has links to reports and surveys in which data on the topic is collected

<http://www.cdc.gov/nchs/fastats/>



# FastStats Exercises

1. What percentage of people that visit the emergency room end up being admitted?
2. What is the average height and weight of a man?

# Data Access Tools

[http://www.cdc.gov/nchs/data\\_access/data\\_tools.htm](http://www.cdc.gov/nchs/data_access/data_tools.htm)

## DATA ACCESS

CDC WONDER

Data Linkage

Data Visualization Gallery

Health Data Interactive

Health Indicators Warehouse 

National Death Index

Public-use Data Files

Research Data Center

VitalStats



The screenshot shows the CDC Data Access Tools website. At the top, it features the CDC logo and the text "Centers for Disease Control and Prevention" with the tagline "CDC 24/7: Saving Lives. Protecting People.™". A search bar is located in the top right corner, with "SEARCH" and "NCHS All CDC Topics" options. Below the search bar is a navigation menu with letters A-Z and a hash symbol. The main content area is titled "Data Access" and includes a sidebar with a "Data Access" menu. The menu items are: Data Access (highlighted), Data Linkage, Data Visualization Gallery, Interactive Tables and Databases (expanded), NCHS DOQS, Health Data Interactive, VitalStats, National Death Index, Public-Use Data Files, and Research Data Center. The main content area features a "Print page" button and a "Contact Us" section. The "Interactive Tables and Databases" section is highlighted, showing a description of NCHS providing health data through specialized tools. Below this, there are three featured sections: "Health Data Interactive" (with a small image), "VITAL STATS" (with a large logo), and "The Health Indicators Warehouse" (with a large image). Each section includes a brief description of the tool and its capabilities. The "Important Information" section in the sidebar includes links for "Data Release Policy" and "Data User Agreement".

CDC Home  
Centers for Disease Control and Prevention  
CDC 24/7: Saving Lives. Protecting People.™

NCHS  
All CDC Topics  
SEARCH

A-Z Index A B C D E F G H I J K L M N O P Q R S T U V W X Y Z #

### Data Access

[Data Access](#)  
[Data Linkage](#)  
[Data Visualization Gallery](#)  
**▶ Interactive Tables and Databases**  
[NCHS DOQS](#)  
[Health Data Interactive](#)  
[VitalStats](#)  
[National Death Index](#)  
[Public-Use Data Files](#)  
[Research Data Center](#)

**Important Information**  
[Data Release Policy](#)  
[Data User Agreement](#)

[NCHS Home > Data Access](#) [Print page](#)

## Interactive Tables and Databases

NCHS provides researchers with important health data through specialized data access tools and resources, including microdata, tables, and reports.

**Health Data Interactive** provides tables with national health statistics for infants, children, adolescents, adults, and older adults. Tables can be customized by age, gender, race/ethnicity, and geographic location to explore different trends and patterns.

**VitalStats** is a collection of vital statistics products (including tables, data files, and reports) that allows users to access and examine vital statistics and population data interactively. Users can access prebuilt tables and reports for quick access to statistics. Data files can also be used to create tables by choosing from over 100 variables.

**The Health Indicators Warehouse** serves as the federal data hub for measurable characteristics that describe the health of a population (such as life expectancy, mortality, disease incidence or prevalence, or other health states); determinants of health (such as health behaviors, health risk factors, physical environments, and socioeconomic environments); and health care access, quality, and use.

**NCHS Survey Measures Catalog** provides an overview of questions about child and adolescent mental health, and functioning and disability in various surveys of the NCHS Data Systems. This website allows users to: search for mental health or functioning and disability measures by topic; print measure summaries, including the text of the question or scale, response options, and other metadata; and link to survey questionnaires, documentation, datafiles, and when available, other sites that provide access to tabulated data.

# Health Data Interactive

1. What race/ethnicity has the highest percentage of persons who have never smoked cigarettes? How current is the data?
2. Based on NHANES 2007-2010 data, what percentage of Mexican-Americans aged 45-64 have diagnosed diabetes?

# VitalStats

1. In 2009, how many girls under the age of 15 delivered a baby over 5000 grams?
2. In 1990, how many Black women between 40-44 years of age had a VBAC?

# CDC Wonder

- Find the number of neoplasm deaths that occurred in Calumet County, Wisconsin each year between 2000 and 2005, broken down by age.

# Questions and Answers

# Contact Information

## Phillip Walls

- [yvi5@cdc.gov](mailto:yvi5@cdc.gov)

## General information and inquiries:

- E-mail: [cdcinfo@cdc.gov](mailto:cdcinfo@cdc.gov)
- Telephone: 1 (800) 232-4636