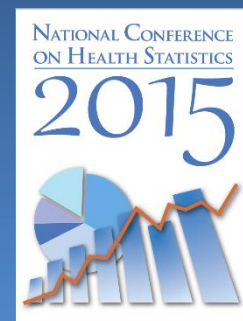


Health Indicators Warehouse: Web Access to Population Health Indicators

James Craver, MAA, Robin Pendley, DrPH
Kate Brett, Ph.D, Li-Hui Chen, Ph.D,
National Center for Health Statistics



Objectives

By the end of today's workshop, you should:

- Understand the website's general benefits and limitations
- Know how to navigate to and through the Health Indicators Warehouse website
- Be able to locate indicators of interest
- Be able to download indicator data

Definition: HEALTH INDICATOR

- **A measurable characteristic that describes:**
 - the health of a population (e.g., life expectancy, mortality, disease incidence or prevalence, or other health states);
 - determinants of health (e.g., health behaviors, health risk factors, physical environments, and socioeconomic environments);
 - health care access, cost, quality, and use
- **Depending on the measure, a health indicator may be defined for a specific population, place, political jurisdiction, or geographic area**

Emerging Health Data Trends & Issues

- **Many data sources, old and new**
 - Surveys (national, state, local), government/administrative records, Electronic Health Records, Health Information Exchange
 - Varying degrees of rigor and compatibility

Emerging Health Data Trends & Issues Continued

- **Growing demand for more and better community-level measures of health and health determinants: HEALTH INDICATORS**
 - Census, vital statistics, state-collected surveillance data, Behavioral Risk Factor Surveillance Survey (BRFSS) data
 - Small sample survey sizes; large standard errors; limited subgroup information; comparability issues

What is the Health Indicators Warehouse (HIW)?

- Contains preconstructed national, state, and county level indicators
 - *no individual-level data*
- Allows users to map, chart, tabulate, and download indicators
- Provides links from indicators to evidence-based interventions

HIW origins: Community Health Data Initiative

➤ Objectives:

- Enhance understanding of health and health care system performance in communities
- Spark and facilitate action to improve performance and value

HIW origins: Community Health Data Initiative Continued

➤ Approach

- Catalyze evolving network of community health data suppliers, application developers, and end users
 - Recruit early adopters across an array of potential uses
 - Increase awareness of community performance to facilitate and inform actions
- ## ➤ HIW is a flagship initiative in the HHS Open Government Plan

Development

- Design, development, pilot, release
 - From mid 2009 to early 2011
 - First public release: 02/2011
- Collaboration and contributions partners
 - ASA; ASFR; ASPE; HRSA; OAH; OBSSR; OMH; SAMHSA
- Current monthly usage stats
 - July 2015: 8166 Users
 - January-July 2015 average: 9967 Users

Key features and functions

- Structured database of high quality, curated data and metadata-national, state, and local level indicator data
- Ability to graph and map data (if data permit)
- Many indicators are linked to evidence-based interventions

Key features and functions Continued

- Accessible user interface for rapidly locating data and browsing indicators
- API / web services making the database open and machine readable

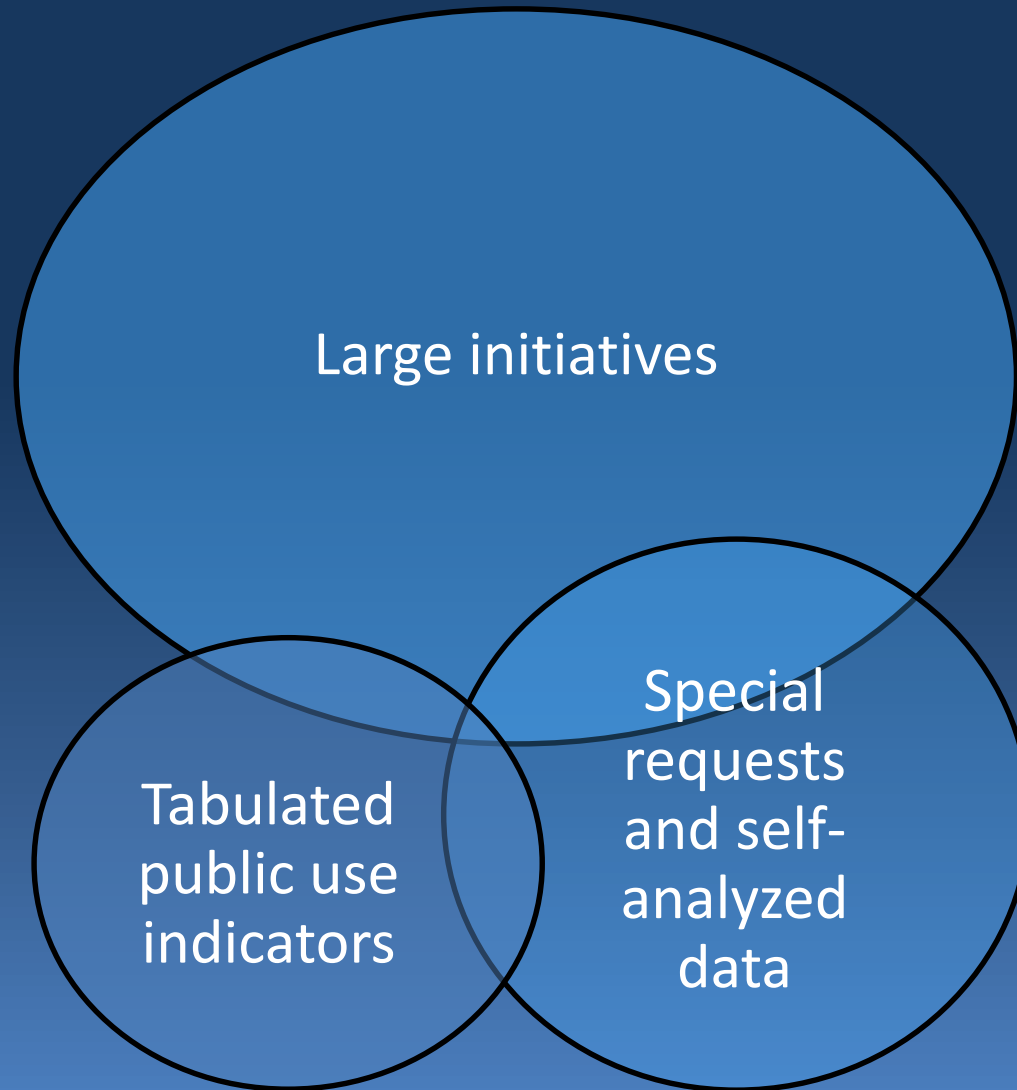
HIW benefits

- Allows developers and users to examine, select and download indicator data and metadata either through the interface (in Excel or CSV) or through web services
- Descriptions of methodology and data sources helps users understand strengths and weaknesses of indicators
- Represents a response to OMB M-13-13

HIW benefits Continued

- Facilitates the process of comparing or harmonizing across sources and methodologies
- Links to original data sources encourages users to obtain more information from the original source
- “One stop shopping”; indicators on many topics can be located in one place, rather than requiring users to go to multiple sites or systems

Indicator suppliers



About the data

- Over 1,200 indicators
- Over 180 data sources
 - Federal: Census data, CMS, Other HHS, ED, Agriculture and other Federal Surveys, Surveillance Data, Medicare Administrative Data, EPA modeled data
 - State: BRFSS, Surveillance System Data
 - Trade Associations: AMA, AHA, other health professions data
 - NGOs: ASTHO, NACCHO, other member surveys

About the data Continued

- Representing 5 Initiatives/Programs
 - CMS Community Utilization & Quality Indicators
 - Community Health Status Indicators
 - County Health Rankings
 - Health, United States
 - Healthy People


Selected metadata fields

- Indicator Number
- Topic Area(s)
- Short Description
- Keyword List
- Full Description
- Methodology Notes
- Value Label
- Caveats and Limitations
- Initiative
- Trend Issues
- Numerator Description
- References
- Numerator Data Source
- More Info Text
- Denominator Description
- Intervention(s) Text
- Denominator Data Source

Demonstration

www.healthindicators.gov

Homepage



HEALTH INDICATORS WAREHOUSE

Search for Indicators [SEARCH](#)

[Share](#)

[HOME](#) [INDICATORS](#) [RESOURCES](#) [ABOUT](#) [FOR DEVELOPERS](#)

Health Indicators by Topic

Each indicator in the HIW is associated with one or more topic areas, such as disease, condition, age group or socio-demographic characteristics.

- Chronic Disease and Conditions
- Demographics
- Disabilities
- Geography
- Health Behaviors
- Health Care
- Health Care Resources
- Health Outcomes
- Health Risk Factors
- Infectious Disease
- Initiative
- Injury and Violence
- Maternal and Infant Health
- Mental Health and Substance Abuse
- Occupational Health and Safety
- Oral Health
- Physical Environment
- Population
- Prevention Through Healthcare
- Public Health Infrastructure
- Social Determinants of Health
- Women's Health

Health Indicators by Topic

Filter by Age, Geography and Much More

Web Services API

Build Your Own Solution Using Our APIs

Getting Started

Helpful Resources for Using the HIW Site


What's New

30 SEP [September 2014 HIW release \(v. 2.2\)](#)
On September 30, 2014, we released a data update of 87 indicators from the following data sources: Mortality, Sexually Transmitted Diseases Surveillance System, Dartmouth Atlas of Health Care, the Area Health Resources File and Health, United States. [\(more\)](#)

15 JUL [July 2014 HIW release \(v. 2.1\)](#)
On July 15, 2014, we released a data update of all of the indicators from the CMS Community Indicators Initiative. This update increases the geographic detail available for these indicators to include county-level estimates in addition to state and hospital referral region. Modifications were made to the HIW interface to allow viewing of all geographic levels of CMS data. [\(more\)](#) [\(more\)](#)

[View all >](#)

Of Interest



County Health Rankings

The annual County Health Rankings measure vital health factors, including high school graduation rates, obesity, smoking, unemployment, access to healthy foods, the quality of air and water, income, and teen births in nearly every county in America. [Learn More >](#)

1 2 3 4 5

6

For Developers

The HIW provides access to the underlying data through the use of an Application Programming Interface (API) which is designed to present information to systems with disparate architectures and technologies.

Entity Relationship Diagrams

- HIW Indicator ERD
- HIW Metadata ERD

[More information for developers >](#)

Helpful Resources

The HIW contains several resources to help you better understand the indicators.

- Health Indicators Warehouse Users Guide (PDF)
- Health Indicators Warehouse Indicator Report (PDF | Excel)
- Data source descriptions
- Glossary of terms
- About the Initiatives
- Frequently Asked Questions

Exercise 1

- Find the User's Guide

Overview of Homepage

➤ Getting Started

- Indicators
- Indicator Report
- Resources
- User's Guide
- Glossary
- FAQ

Glossary

HOME

INDICATORS

RESOURCES

ABOUT

FOR DEVELOPERS

Resources

Initiatives

Data Sources

Glossary

FAQ

Additional Resources

Glossary

You may use the drop-down below if you already know which term you're looking for:

Jump To:

Data not collected, not analyzed, or not applicable for a particular subpopulation group.

A

Age adjustment

Age adjustment is used to compare risks for two or more populations at one point in time or for one population at two or more points in time. Age-adjusted rates are computed by the direct method by applying age-specific rates in a population of interest to a standardized age distribution, to eliminate differences in observed rates that result from age differences in population composition. Age-adjusted rates should be viewed as relative indexes rather than actual measures of risk.

[Health, United States, 2013, Appendix](#)

Ambulatory surgical center

A place other than a hospital that does outpatient surgery. At an ambulatory (in and out) surgery center, you may stay for only a few hours or for one night.

[CMS.gov Glossary](#)

B

Basic actions difficulty

Basic actions difficulty captures limitations or difficulties in movement, emotional, sensory, or cognitive functioning associated with a health problem. Persons with more than one of these difficulties are counted only once in the estimates. The full range of functional areas cannot be assessed on the basis of National Health Interview Survey (NHIS) questions; however, the available questions can identify difficulty in the following core areas of functioning:

Movement (walking, standing, sitting, bending, reaching, pushing, pulling, carrying objects with force, and lifting)

Questions about the HIW?

For more information about the purpose of the HIW, the data that it contains or how to access the data, please visit the [Frequently Asked Questions](#).

[Visit the Frequently Asked Questions >](#)

Indicator Report

To view a list of all of the indicators in the warehouse, please see our [Health Indicators Warehouse Indicator Report](#) ([PDF - 371 KB](#) | [Excel - 100 KB](#)).

FAQ

[Initiatives](#)[Data Sources](#)[Glossary](#)[FAQ](#)[Additional Resources](#)

FAQ

Warehouse Description

Q. How should the Health Indicators Warehouse be cited?

A. The suggested citation is: Centers for Disease Control and Prevention. National Center for Health Statistics. Health Indicators Warehouse. www.healthindicators.gov. [Date of access].

Q. What is the Health Indicators Warehouse?

A. The Health Indicators Warehouse (HIW) is a user-friendly web-accessible database of pre-tabulated national, state, and local health indicators, reflecting multiple dimensions of population health, health care, and health determinants. The HIW also contains supporting descriptive data to facilitate understanding and appropriate use of the indicators, as well as links to evidence-based interventions.

Q. What data does the Warehouse contain?

A. The HIW includes indicators from:

- RWJF/UWPHI County Health Rankings (CHR);
- Community Health Status Indicators (CHSI);
- Healthy People 2020;
- Centers for Medicare & Medicaid Services (CMS) indicators (a set of community-level, Medicare utilization, sociodemographic, patient safety and quality indicators);
- Health, United States
- Additional indicators as determined by the HHS Interagency Governance Group

All indicators in the CHSI and County Health Rankings are at the county level. Additional indicators are being added periodically.

Q. How can I access the indicator data in the Warehouse?

A. There are two major ways to access the indicator data: you can go to the HIW website and select topic areas and specific indicators to display or print as tables, charts, or maps (when possible) OR you may download the indicator data into a spreadsheet for use in your own application. Business services are also available so that indicator data and metadata can be exposed and directly accessed by other computing systems.

Q. Does the HIW include individual level data, such as data on individual survey respondents, Medicare enrollees, health care providers, etc.?

A. No, the warehouse does not contain any individual level data. The warehouse is designed to provide summary health indicator data at a variety of geographic levels and for different populations. The indicators are constructed from individual-level data obtained from other governmental and private initiatives, and are presented at an aggregate level.

Q. What if I want to get access to the underlying data from which you created the indicators?

A. The warehouse provides users with details on the data sources for every indicator. Users can apply to those agencies and organizations through their standard approaches for requesting data access. Many micro-data sets are also available on Health.Data.gov Health Data Community.

Q. Will the warehouse include Medicare data sets like Hospital Compare?

HIW User Guide

As a user of the HIW site you can quickly access information related to health indicators through multiple specific methods. On the homepage you can navigate around to find indicators by topic area, geographic location, the initiative behind the data or by simply searching. Other items on the page will let you view information about the Health Indicators Warehouse, about the data utilized to build this site and other important information. The User Guide will help you become accustomed to using the site and it's rich feature set.

[Health Indicators Warehouse User's Guide \(PDF\) - 933 KB](#)

Propose an Indicator

We're interested in hearing about possible additions to the HIW. Let us know if there are specific indicators you would like us to consider including in future updates. Follow the link below for more information on the process and criteria we're using for reviewing proposed indicators.

[Propose an indicator](#) >

For Developers

The HIW provides access to the underlying data through the use of an Application Programming Interface (API) which is designed to present information to systems with disparate architectures and technologies.

Entity Relationship Diagrams

- [HIW Indicator ERD \(PDF\) - 189 KB](#)
- [HIW Metadata ERD \(PDF\) - 190 KB](#)

Overview of Homepage Continued

➤ Helpful Resources

- User's Guide
- Health Indicators Warehouse Indicator Report
- Data source descriptions
- Glossary of terms
- About the initiatives
- Frequently Asked Questions

Of Interest Sections

- Of Interest Sections
 - Contains Information on related websites and organizations that have used data off of HIW
- HIW recognized as a Health Data All-Star by Health Data Consortium

Overview of Homepage – Health Indicators

➤ Health Indicators by Topic

Health Indicators by Topic

HOME

INDICATORS

RESOURCES

ABOUT

FOR DEVELOPERS

Health Indicators by Topic

Each indicator in the HIW is associated with one or more topic areas, such as disease, condition, age group or socio-demographic characteristics.

- ▶ Chronic Disease and Conditions
- ▶ Data Sources
- ▶ Demographics
- ▶ Disabilities
- ▶ Geographic Levels
- ▶ Health Behaviors
- ▶ Health Care
- ▶ Health Care Resources
- ▶ Health Outcomes
- ▶ Health Risk Factors
- ▶ Infectious Disease
- ▶ Initiative
- ▶ Injury and Violence
- ▶ Maternal and Infant Health
- ▶ Mental Health and Substance Abuse
- ▶ Occupational Health and Safety
- ▶ Oral Health
- ▶ Physical Environment
- ▶ Population
- ▶ Prevention Through Healthcare
- ▶ Public Health Infrastructure
- ▶ Social Determinants of Health
- ▶ Women's Health

Health Indicators by Topic

Filter by Age, Geography and Much More

Web Services API

Build Your Own Solution Using Our API

Getting Started

Helpful Resources for Using the HIW Site

Health Indicators Search



SEARCH

Share

HOME

INDICATORS

RESOURCES

ABOUT

FOR DEVELOPERS

Health Indicators by Topic

Each indicator in the HIW is associated with one or more topic areas, such as disease, condition, age group or socio-demographic characteristics.

- ▶ Chronic Disease and Conditions
- ▶ Data Sources
- ▶ Demographics
- ▶ Disabilities
- ▶ Geographic Levels
- ▶ Health Behaviors
- ▶ Health Care
- ▶ Health Care Resources
- ▶ Health Outcomes
- ▶ Health Risk Factors
- ▶ Infectious Disease
- ▶ Injury and Violence
- ▶ Maternal and Infant Health
- ▶ Mental Health and Substance Abuse
- ▶ Occupational Health and Safety
- ▶ Oral Health
- ▶ Physical Environment
- ▶ Population
- ▶ Prevention Through Healthcare
- ▶ Public Health Infrastructure
- ▶ Social Determinants of Health
- ▶ Women's Health

Health Indicators by Topic

Filter by Age, Geography and Much More

Web Services API

Build Your Own Solution Using Our API

Getting Started

Helpful Resources for Using the HIW Site

Exercise 2-Search

HOME

INDICATORS

RESOURCES

ABOUT

FOR DEVELOPERS

Find Indicators

Use the filters below to narrow the list of resulting indicators.

- Chronic Disease and Conditions
- Data Sources
- Demographics
- Disabilities
- Geographic Levels
- Health Behaviors
- Health Care

- National Health and Nutrition Examina...
- National Health Interview Survey
- National Hospital Ambulatory Medical...
- National Hospital Discharge Survey
- National Immunization Survey
- National Newborn Screen and Genetic...
- National Notifiable Diseases Surveilla...

We found **139** indicators which contain: Data Sources National Health Interview Survey

[Remove All Filters](#)

First « Prev 1 » Next » Last

Indicator Title
Data Source

Geographic Level

Latest Year ▼

HP2020 ID

Example of Search

We found **139** indicators which contain:

[Remove All Filters](#)

First Prev Next Last

Indicator Title ▲ Data Source	Geographic Level	Latest Year	HP2020 ID
Activity limitation due to chronic back conditions: adults (per 1,000) NHIS	<input type="button" value="N"/>	2011	AOCBC-12
Activity limitations: adults 45+ years with COPD (percent) ⓘ Population Estimates; NHIS	<input type="button" value="N"/>	2012	RD-9
Activity limitations: persons with asthma (percent) NHIS	<input type="button" value="N"/>	2012	RD-4
ADHD: children (percent) NHIS	<input type="button" value="N"/>	2012	
Aerobic physical activity meeting guidelines: adults (percent) NHIS	<input type="button" value="N"/>	2011	PA-2.1
Aerobic physical activity meeting high guidelines: adults (percent) NHIS	<input type="button" value="N"/>	2011	PA-2.2
Aerobic physical and muscle-strengthening activity: adults (percent) NHIS	<input type="button" value="N"/>	2011	PA-2.4
Appropriate treatment use: adults with tinnitus (percent) NHIS	<input type="button" value="N"/>	2007	ENT-VSL-10
Appropriate treatment use: balance/dizziness problems adults (percent) NHIS	<input type="button" value="N"/>	2008	ENT-VSL-13.2

Health insurance, none: persons <65 (percent)

HEALTH INDICATORS WAREHOUSE

Share

HOME INDICATORS RESOURCES ABOUT FOR DEVELOPERS

Health insurance, none: persons <65 (percent)

Data Source: NHIS (CDC/NCHS)

Percent of persons under age 65 with no health insurance coverage

[Data Source and Additional Information](#)

Overview Table Advanced Table Chart Map Download

Numerator

Number of persons under age 65 with no health insurance coverage

Denominator

Number of persons under age 65

Methodology

Persons not covered by private insurance, Medicaid, Children's Health Insurance Program (CHIP), state-sponsored or other government-sponsored health plans, Medicare, or military plans are considered to have no health insurance coverage. Persons with only Indian Health Service coverage are considered to have no health insurance coverage.

Health insurance coverage is at the time of interview.

The number of persons with no health insurance coverage was calculated by multiplying the percentage with no coverage by the number of persons under age 65 in the civilian noninstitutionalized U.S. population, which was determined from the post-stratification Census control total for each survey year. Percentages of persons without coverage were calculated with unknown values excluded from denominators.

Missing family income data were imputed.

MSA is metropolitan statistical area. MSA status is determined using 2000 census data and the 2000 standards for defining MSAs.

For additional information, see [Health, United States homepage](#). Sections that may be of interest include the chartbook, the trend tables, and the appendices.

Related Keywords

- National Health Interview Survey
- Health, United States
- health insurance

Indicator Information

Data Source
NHIS (CDC/NCHS)

Initiative
HUS

Geographic Levels
National

Data Years
2012, 2011

Dimensions
Total, Age, Sex, Race/Ethnicity, IncomeAndPovertyStatus, MaritalStatus, DisabilityStatus, Geography

Health insurance, none: persons <65 (percent)-Table

Percent of persons under age 65 with no health insurance coverage

[Data Source and Additional Information](#)

Overview

Table

Advanced Table

Chart

Map

Download



This indicator contains National data.

Locale

National

	2012	2011
By Total		
Total	16.9% 0.2 SE	17.2% 0.2 SE
By Age		
Aged 0-17 years	6.6% 0.3 SE	7.0% 0.3 SE
Aged 6-17 years	7.6% 0.3 SE	8.0% 0.3 SE
Aged 0-18 years	7.0% 0.3 SE	7.4% 0.3 SE
Aged 0-5 years	4.6% 0.3 SE	5.0% 0.3 SE
Aged 6-18 years	8.1% 0.3 SE	8.5% 0.3 SE
Aged 18-44 years	24.8% 0.4 SE	25.4% 0.4 SE
Aged 18-24 years	24.5% 0.6 SE	25.9% 0.6 SE
Aged 19-25 years	26.3% 0.7 SE	27.9% 0.7 SE
Aged 25-34 years	28.1% 0.5 SE	28.1% 0.5 SE
	21.7%	22.2%

Health insurance, none: persons <65 (percent)-Advanced Table

[Data Source and Additional Information](#)

Overview Table **Advanced Table** Chart Map Download

i This indicator contains **National** data.

You can use this Advanced Table to customize the display of data by grouping and filtering on headers. Detailed instructions can be found in the following document: [Advanced Table User's Guide \(PDF\) - 310 KB](#)

Drag a column header and drop it here to group by that column

[Restore Defaults](#)

Dimension	Dimension Value	Locale	County/HRR	2011	2012
Total	Total	National		17.2% 0.2 SE	16.9% 0.2 SE
Age	Aged 0-17 years	National		7.0% 0.3 SE	6.6% 0.3 SE
Age	Aged 6-17 years	National		8.0% 0.3 SE	7.6% 0.3 SE
Age	Aged 0-18 years	National		7.4% 0.3 SE	7.0% 0.3 SE
Age	Aged 0-5 years	National		5.0% 0.3 SE	4.6% 0.3 SE
Age	Aged 6-18 years	National		8.5% 0.3 SE	8.1% 0.3 SE
Age	Aged 18-44 years	National		25.4% 0.4 SE	24.8% 0.4 SE
Age	Aged 18-24 years	National		25.9% 0.6 SE	24.5% 0.6 SE
Age	Aged 19-25 years	National		27.9% 0.7 SE	26.3% 0.7 SE
Age	Aged 25-34 years	National		28.1% 0.5 SE	28.1% 0.5 SE
Age	Aged 35-44 years	National		22.2% 0.5 SE	21.7% 0.5 SE
Age	Aged 18-64 years	National		21.2% 0.3 SE	20.9% 0.3 SE
Age	Aged 45-64 years	National		15.4%	15.6%

Page size: 200 of 1 Page: 1 of 1

Displaying page 1 of 1, items 1 to 71 of 71

DSU Data statistically unreliable.

blank Estimate was not calculated for this year or population group.

Advanced Table User's Guide

Advanced Table User's Guide

Health Indicators Warehouse

The Advanced Table data view can be customized to display data in which you are most interested by applying different filters and enabling grouping.

Quick Tips

1. If no Dimension/Value filter is selected, all dimension values will be displayed.
2. In order to filter the data by County, you must first select a State.

Data Years

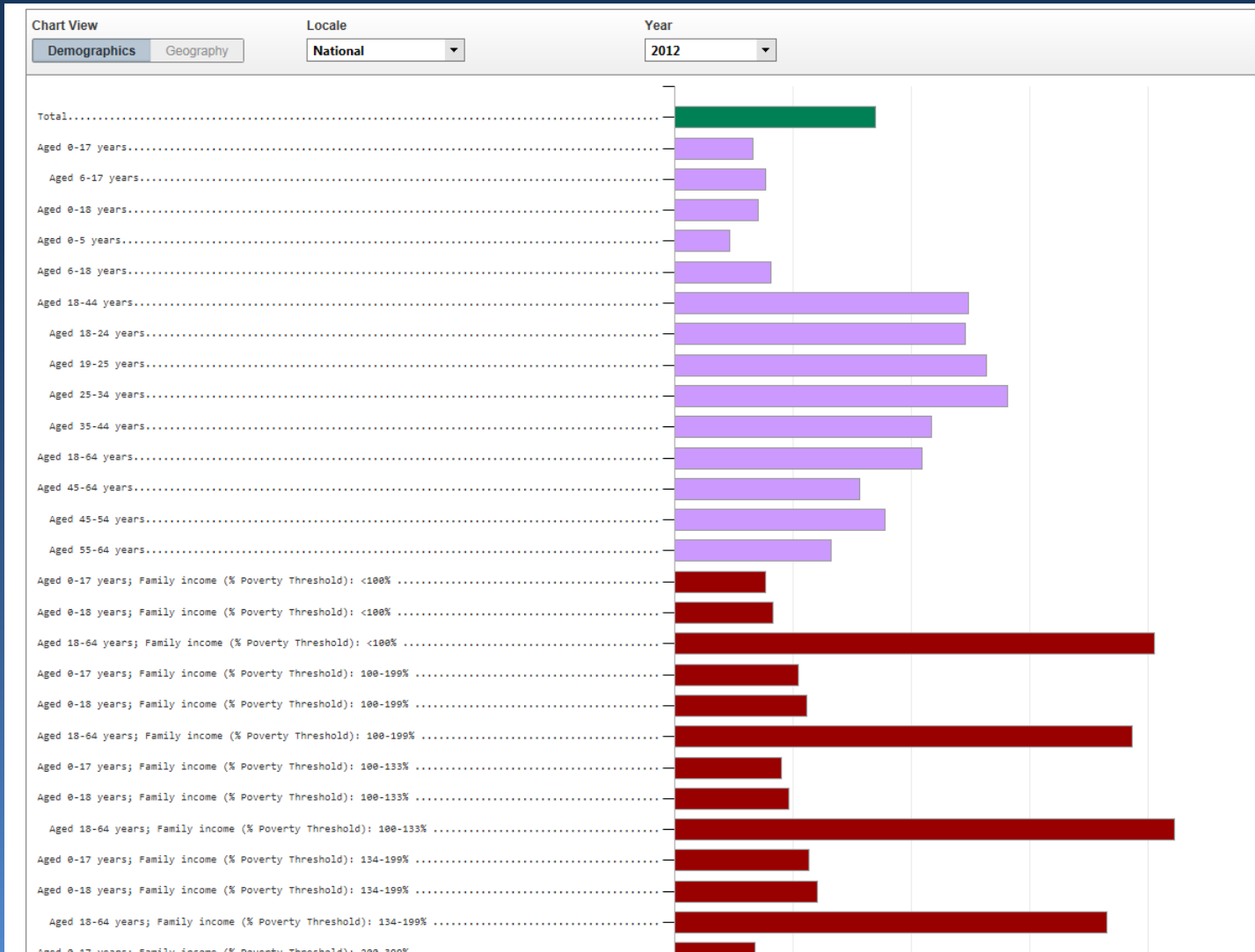
Data is displayed per-year; each year of data is displayed in its own column. All years for which data exists are shown in ascending order (from left to right). Multi-year data is displayed alongside single-year data, ordered by the end year. Note that the table displays the most recent years first. Use the scrollbar at the bottom of the table to scroll left and right.

Filtering

To filter the data, simply click the drop down menu below a category and select the filter which you would like to apply. The table will be refreshed with the filter applied to the data.

Dimension	Dimension Value	State	County	2007-
<input type="text"/>	<input type="text"/>	<input type="text"/>	<input type="text"/>	

Health insurance, none: persons <65 (percent)-Chart



Health insurance, none: persons <65 (percent)-Download

HEALTH INDICATORS WAREHOUSE Share

HOME INDICATORS RESOURCES ABOUT FOR DEVELOPERS

Health insurance, none: persons <65 (percent)

Data Source: NHIS (CDC/NCHS)

Percent of persons under age 65 with no health insurance coverage

[Data Source and Additional Information](#)

Overview Table Advanced Table Chart Map **Download**

Data Selection:

Your selection contains all data for this indicator.

CSV 3 KB - This download contains two comma delimited text files, one containing metadata (the information that describes the indicator and how it was calculated) and the other containing data. **Please note that these files may be very large.** The data file contained in this download may have more records than are supported by any given spreadsheet application.


[Download](#)

Home	Data Sources	Privacy Policy
Indicators	Glossary	Accessibility
Resources	FAQ	Disclaimer
About	Propose an Indicator	Site Map
For Developers	Suggested Citation	

Stay Connected

- [Subscribe to the RSS Feed](#)
- [Contact Us](#)

Health Indicators Warehouse
Developed by the National Center for Health Statistics
3311 Toledo Road
Hyattsville, MD 20782
(800) 232-4636
Send comments or questions to HealthIndicators@cdc.gov.



Health insurance, none: persons <65 (percent)-Download Example

	A	B	C	D	E	F	G	H	I	J	K	L	M	N	O
1	Indicator ID	Dimension	Timeframe	Numeric V	Missing Va	Confidenc	Confidenc	Standard E	Locale	Locale Lev	Locale Sta	Locale Cou	Locale Cou	Locale HRI	Total
2	3E+08	Total	2012	15.80%		15.50%	16.10%		Alabama	State		1	1		Total
3	3E+08	Aged 0-18	2012	4.30%		3.80%	4.80%		Alabama	State		1	1		
4	3E+08	Aged 18-64	2012	20.20%		19.80%	20.60%		Alabama	State		1	1		
5	3E+08	Male	2012	16.70%		16.20%	17.20%		Alabama	State		1	1		
6	3E+08	Female	2012	14.80%		14.40%	15.20%		Alabama	State		1	1		
7	3E+08	Hispanic o	2012	34.60%		33.00%	36.20%		Alabama	State		1	1		
8	3E+08	White, nor	2012	12.90%		12.50%	13.30%		Alabama	State		1	1		
9	3E+08	Black or Af	2012	19.00%		18.30%	19.70%		Alabama	State		1	1		
10	3E+08	Total	2012	12.80%		11.50%	14.10%		Alabama - County			1	1001		Total
11	3E+08	Aged 0-18	2012	3.70%		2.70%	4.70%		Alabama - County			1	1001		
12	3E+08	Aged 18-64	2012	16.90%		15.20%	18.60%		Alabama - County			1	1001		
13	3E+08	Male	2012	13.30%		11.50%	15.10%		Alabama - County			1	1001		
14	3E+08	Female	2012	12.40%		10.60%	14.20%		Alabama - County			1	1001		
15	3E+08	Total	2012	15.80%		14.60%	17.00%		Alabama - County			1	1003		Total
16	3E+08	Aged 0-18	2012	5.40%		4.10%	6.70%		Alabama - County			1	1003		
17	3E+08	Aged 18-64	2012	19.90%		18.30%	21.50%		Alabama - County			1	1003		
18	3E+08	Male	2012	17.20%		15.50%	18.90%		Alabama - County			1	1003		
19	3E+08	Female	2012	14.50%		12.90%	16.10%		Alabama - County			1	1003		
20	3E+08	Total	2012	17.50%		15.90%	19.10%		Alabama - County			1	1005		Total
21	3E+08	Aged 0-18	2012	4.50%		3.20%	5.80%		Alabama - County			1	1005		
22	3E+08	Aged 18-64	2012	22.80%		20.60%	25.00%		Alabama - County			1	1005		
23	3E+08	Male	2012	18.50%		16.10%	20.90%		Alabama - County			1	1005		
24	3E+08	Female	2012	16.60%		14.40%	18.80%		Alabama - County			1	1005		
25	3E+08	Total	2012	15.10%		13.60%	16.60%		Alabama - County			1	1007		Total
26	3E+08	Aged 0-18	2012	4.20%		3.00%	5.40%		Alabama - County			1	1007		
27	3E+08	Aged 18-64	2012	19.30%		17.20%	21.40%		Alabama - County			1	1007		
28	3E+08	Male	2012	15.20%		13.10%	17.30%		Alabama - County			1	1007		

Some considerations

- Estimates may be single-year or multiple-year
 - Pooled years for greater precision in some cases
 - Ability to show estimates for demographic sub-groups
- Some tables will have time trends
- Data suppression
 - Some estimates may be suppressed based on small sizes or on the basis of confidentiality, as defined by the data provider.

Exercise 3-Where Can I Find Answers?

- What does DSU mean?
- What is NVSS-N?

Exercise 4-Using Search Tool

We found 26 indicators which contain:

Indicator Title ▲ Data Source	Geographic Level	Latest Year	HP2020 ID
African American Medicare beneficiaries (percent) CCW	<input type="checkbox"/> N <input type="checkbox"/> S <input type="checkbox"/> C <input type="checkbox"/> H	2012	
Ambulatory surgery center Medicare users (count) CCW; Medicare Administrative Data	<input type="checkbox"/> N <input type="checkbox"/> S <input type="checkbox"/> C <input type="checkbox"/> H	2012	
Ambulatory surgery center Medicare utilization (percent) CCW; Medicare Administrative Data	<input type="checkbox"/> N <input type="checkbox"/> S <input type="checkbox"/> C <input type="checkbox"/> H	2012	
Average age of Medicare beneficiaries (mean) ⓘ CCW	<input type="checkbox"/> N <input type="checkbox"/> S <input type="checkbox"/> C <input type="checkbox"/> H	2012	
Chlamydia screening: females 16-20 years private health insurance (percent) HEDIS	<input type="checkbox"/> N	2011	STD-4.1
Chlamydia screening: females 21-24 years private health insurance (percent) HEDIS	<input type="checkbox"/> N	2011	STD-4.2
Female Medicare beneficiaries (percent) CCW	<input type="checkbox"/> N <input type="checkbox"/> S <input type="checkbox"/> C <input type="checkbox"/> H	2012	
Health insurance coverage, through workplace: persons <65 (percent) NHIS	<input type="checkbox"/> N	2012	
Health insurance, none: <65 years (percent) SAHIE	<input type="checkbox"/> S <input type="checkbox"/> C	2012	
Health insurance, none: persons <65 (percent) NHIS	<input type="checkbox"/> N	2012	
Health insurance: <65 years (percent) NHIS	<input type="checkbox"/> N	2011	AHS-1.1
Hispanic Medicare beneficiaries (percent) CCW	<input type="checkbox"/> N <input type="checkbox"/> S <input type="checkbox"/> C <input type="checkbox"/> H	2012	
Home health Medicare users (count) CCW; Medicare Administrative Data	<input type="checkbox"/> N <input type="checkbox"/> S <input type="checkbox"/> C <input type="checkbox"/> H	2012	

Health insurance, none <65 years (percent)-SAHIE

[HOME](#)[INDICATORS](#)[RESOURCES](#)[ABOUT](#)[FOR DEVELOPERS](#)

Health insurance, none: <65 years (percent)

Data Source: SAHIE (Census)

Percent of persons under 65 years of age without health insurance

[Data Source and Additional Information](#)[Overview](#)[Table](#)[Advanced Table](#)[Chart](#)[Map](#)[Download](#)

Numerator

Civilian non-institutionalized persons under 65 years of age who report having no health insurance

Denominator

Civilian non-institutionalized persons under 65 years of age

Methodology

SAHIE provides model-based estimates of health insurance coverage for all states and counties in the United States. For estimation, SAHIE uses statistical models that combine survey data from the Annual Social and Economic Supplement to the Current Population Survey (CPS ASEC) with administrative records data and Census 2000 data. The models are "area level" models because SAHIE uses survey estimates and administrative data at certain levels of aggregation, rather than individual survey and administrative records. The modeling approach is similar to that of common models developed for small area estimation, but with some additional complexities. The published estimates are based on aggregates of modeled demographic groups. For states, SAHIE models at a base level defined by the full cross-classification of: four age groups, four race/ethnicity groups, both sexes and three income groups. For counties, it models at a base level defined by four age groups both sexes, and two income groups.

SAHIE uses random continuous predictors, which include data from Census 2000, Internal Revenue Service, Supplemental Nutrition Assistance Program and Medicaid/Children's Health Insurance Program. These are not fixed predictors in the model. Instead, it treats them as random, in a way similar to survey estimates. They are not unbiased estimators of the numbers. Instead, we assume that their expectations are linear functions of the total or number insured in an income group. SAHIE typically assumes they are normally distributed with variances that depend on unknown parameters.

SAHIE formulates the model in a Bayesian framework and reports the posterior means as the point estimates. It uses the posterior means and variances together with a normal approximation to calculate symmetric 90-percent confidence intervals, and reports their half-widths as the margins of error.

Footnotes

Confidence intervals of 90% are used for the SAHIE.

References

Related Keywords

[County Health Rankings](#)[health insurance](#)[insurance](#)[access](#)[coverage](#)[Small Area Health Insuran...](#)[uninsured](#)

Indicator Information

Data Source
[SAHIE \(Census\)](#)

Initiative
[CHR](#)

Geographic Levels
State and County

Data Years
2012, 2011, 2010, 2009, 2008, 2007

Dimensions
Total, Age, Sex, RaceEthnicity

Health insurance, none <65 years (percent)-SAHIE-table

Percent of persons under 65 years of age without health insurance

[Data Source and Additional Information](#)

Overview Table Advanced Table Chart Map Download

i This indicator contains State and County data.

Locale	County					
Alabama						
	2012	2011	2010	2009	2008	2007
By Total						
Total	15.8% (15.5% - 16.1%)	16.6% (16.2% - 17.0%)	16.9% (16.5% - 17.3%)	15.8% (15.4% - 16.2%)	15.3% (14.9% - 15.7%)	14.6% (13.6% - 15.6%)
By Age						
Aged 0-18 years	4.3% (3.8% - 4.8%)	5.6% (5.1% - 6.1%)	6.3% (5.7% - 6.9%)			
Aged 18-64 years	20.2% (19.8% - 20.6%)	21.0% (20.5% - 21.5%)	21.2% (20.7% - 21.7%)			
By Sex						
Male	16.7% (16.2% - 17.2%)	17.7% (17.2% - 18.2%)	18.3% (17.8% - 18.8%)			
Female	14.8% (14.4% - 15.2%)	15.5% (15.0% - 16.0%)	15.6% (15.1% - 16.1%)			
By Race/Ethnicity						
Hispanic or Latino	34.6% (33.0% - 36.2%)	38.0% (36.2% - 39.8%)				
White, non-Hispanic	12.9% (12.5% - 13.3%)	13.9% (13.5% - 14.3%)				
Black or African American, non-Hispanic	19.0% (18.3% - 19.7%)	19.3% (18.6% - 20.0%)				

DSU Data statistically unreliable.

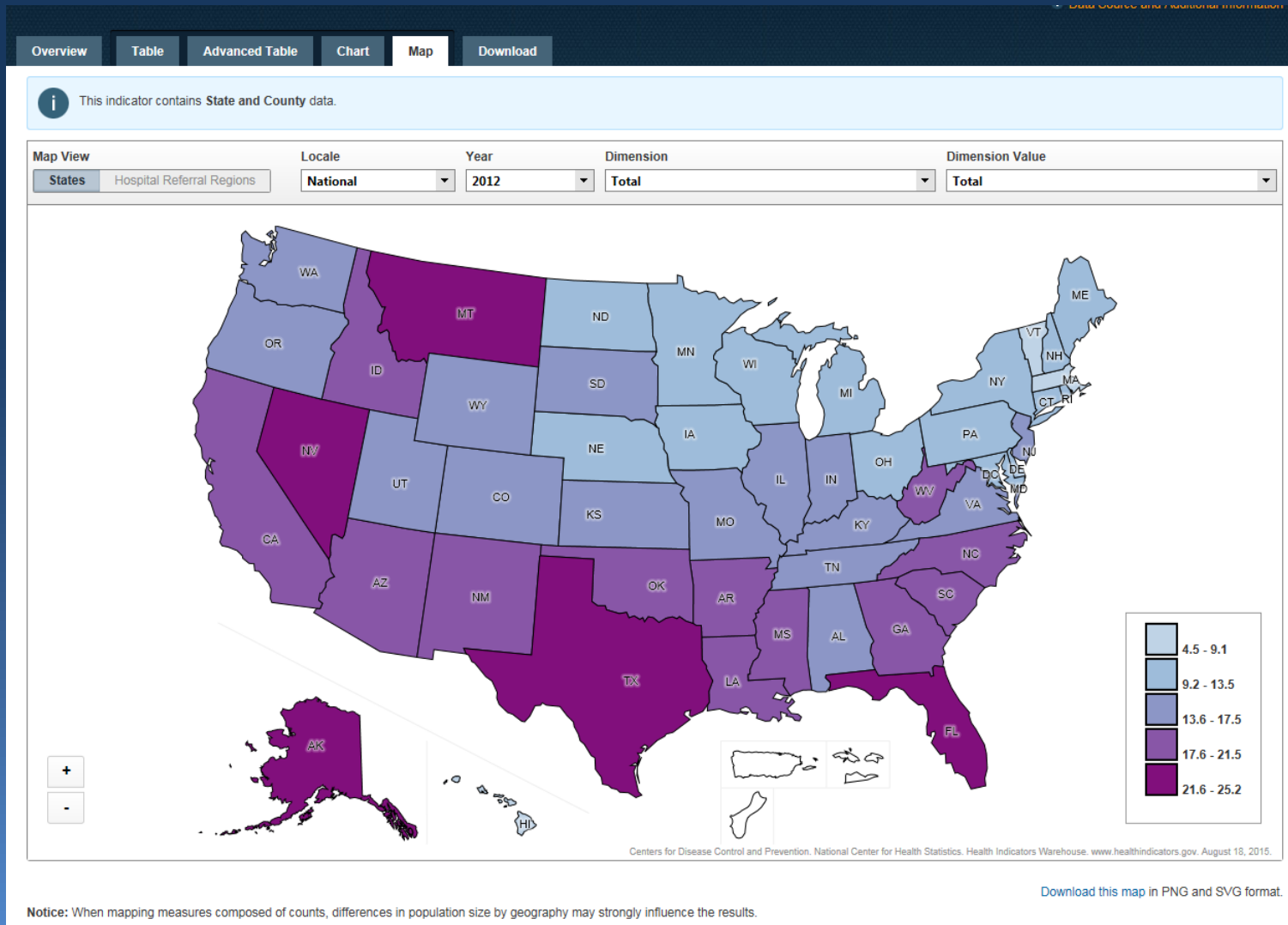
<blank> Estimate was not calculated for this year or population group.

--- Data not collected, analyzed, or applicable for a particular population group.

Health insurance, none < 65 years (percent)-SAHIE-North Carolina



Health insurance, none < 65 years (percent)-SAHIE-National-Map

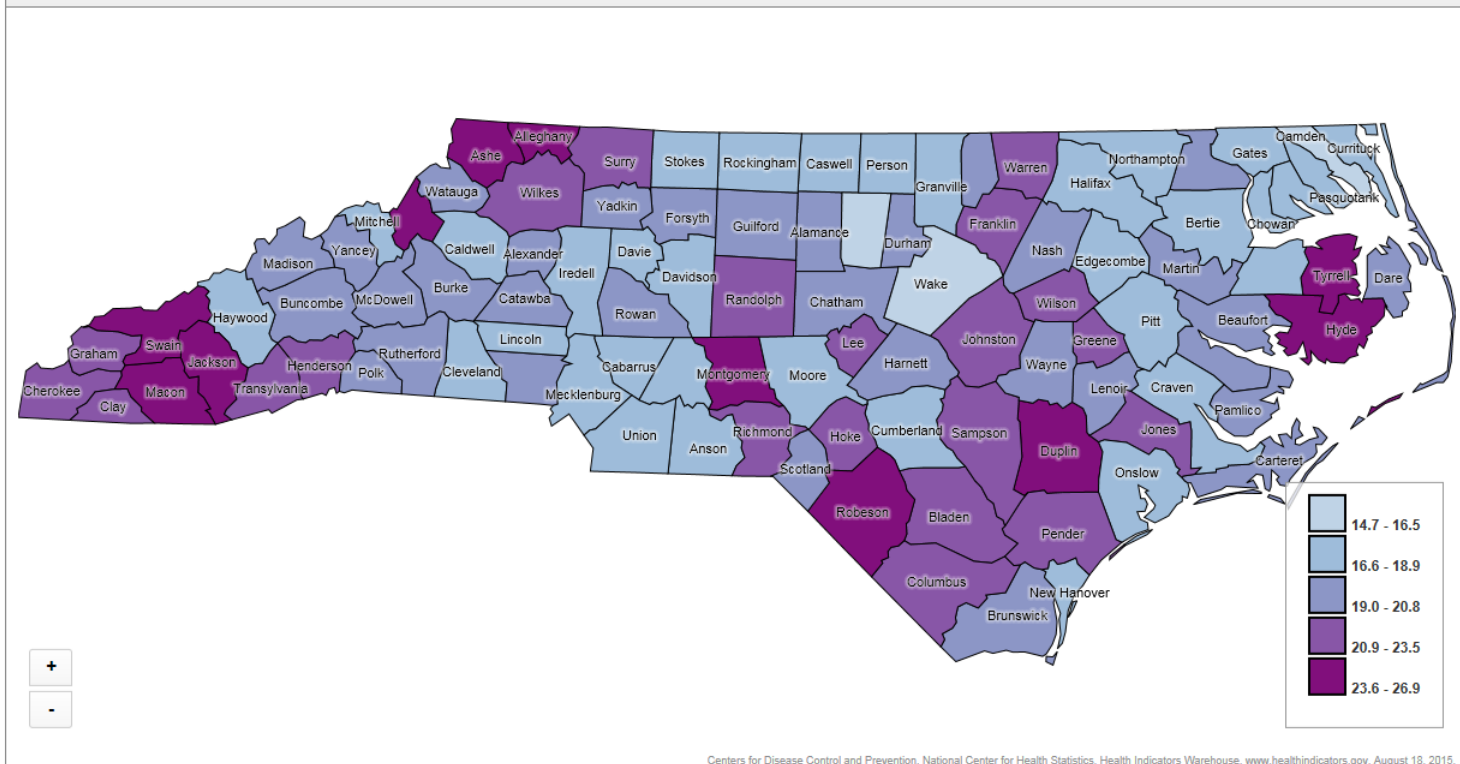


Health insurance, none <65 years (percent)-SAHIE-Map

Overview Table Advanced Table Chart **Map** Download

i This indicator contains State and County data.

Map View States Hospital Referral Regions Locale: **North Carolina** Year: **2012** Dimension: **Total** Dimension Value: **Total**



Centers for Disease Control and Prevention. National Center for Health Statistics. Health Indicators Warehouse. www.healthindicators.gov. August 18, 2015.

[Download this map in PNG and SVG format.](#)

Notice: When mapping measures composed of counts, differences in population size by geography may strongly influence the results.

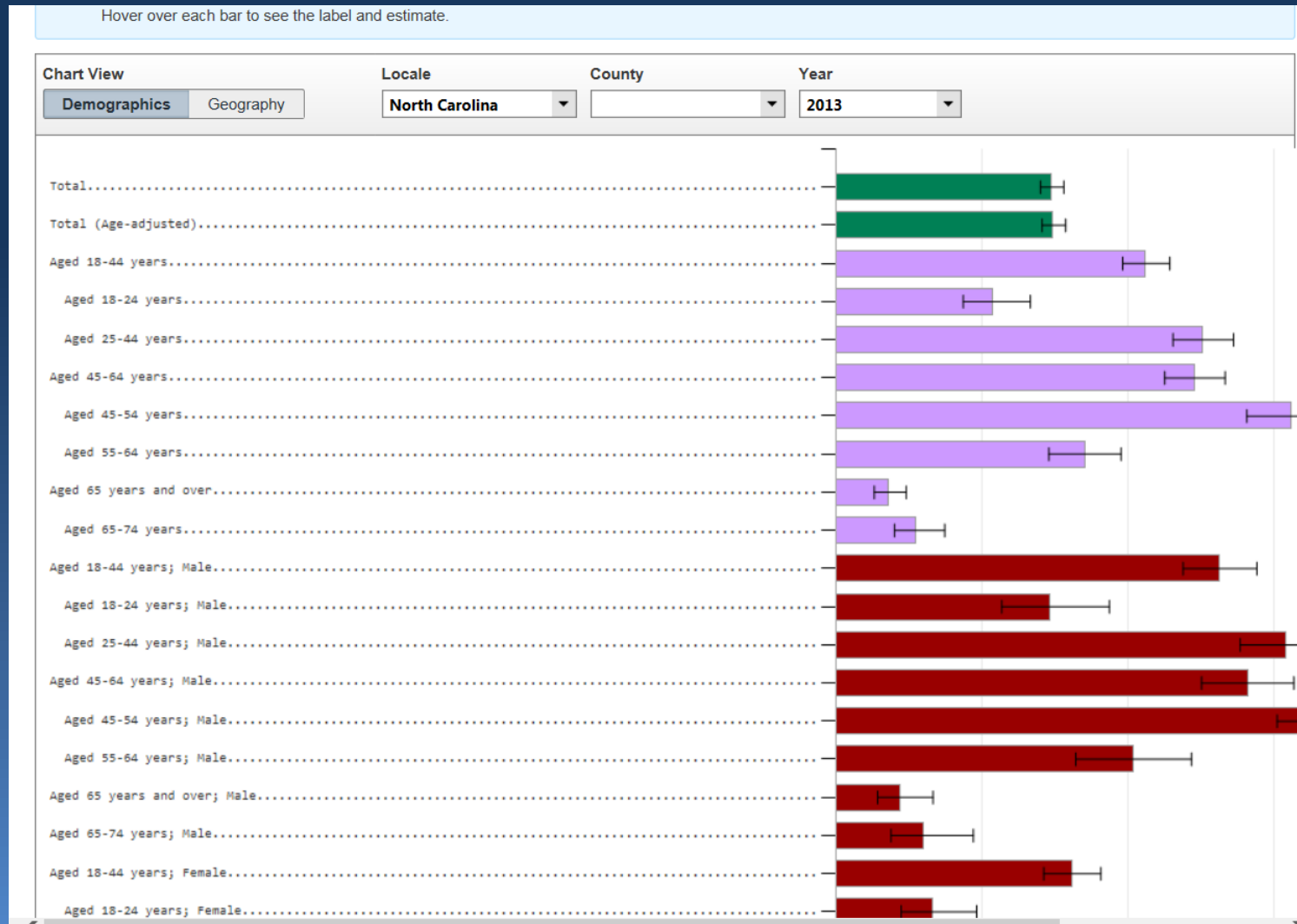
Exercise 5-Drug poisoning deaths 2013

➤ Choose a state

- Is there a difference between age groups, sex, race/ethnicity?

Exercise 5-Drug poisoning deaths 2013

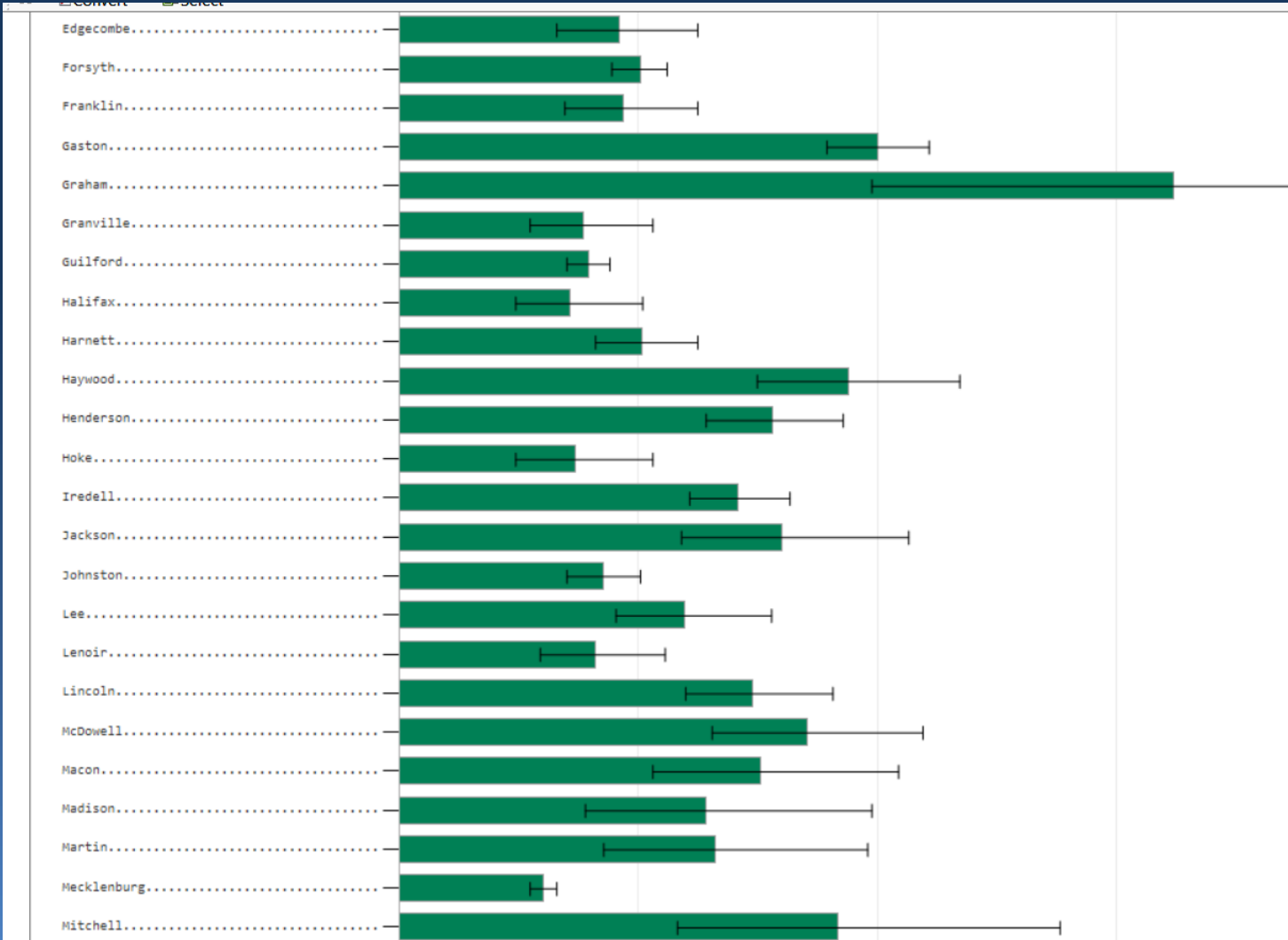
Example: North Carolina



Exercise 6-Drug poisoning deaths 2007-2013

- Choose two counties within a state
 - Compare drug poisoning deaths
 - Show this information using a bar chart

Exercise 6-Drug poisoning deaths 2007-2013 Example

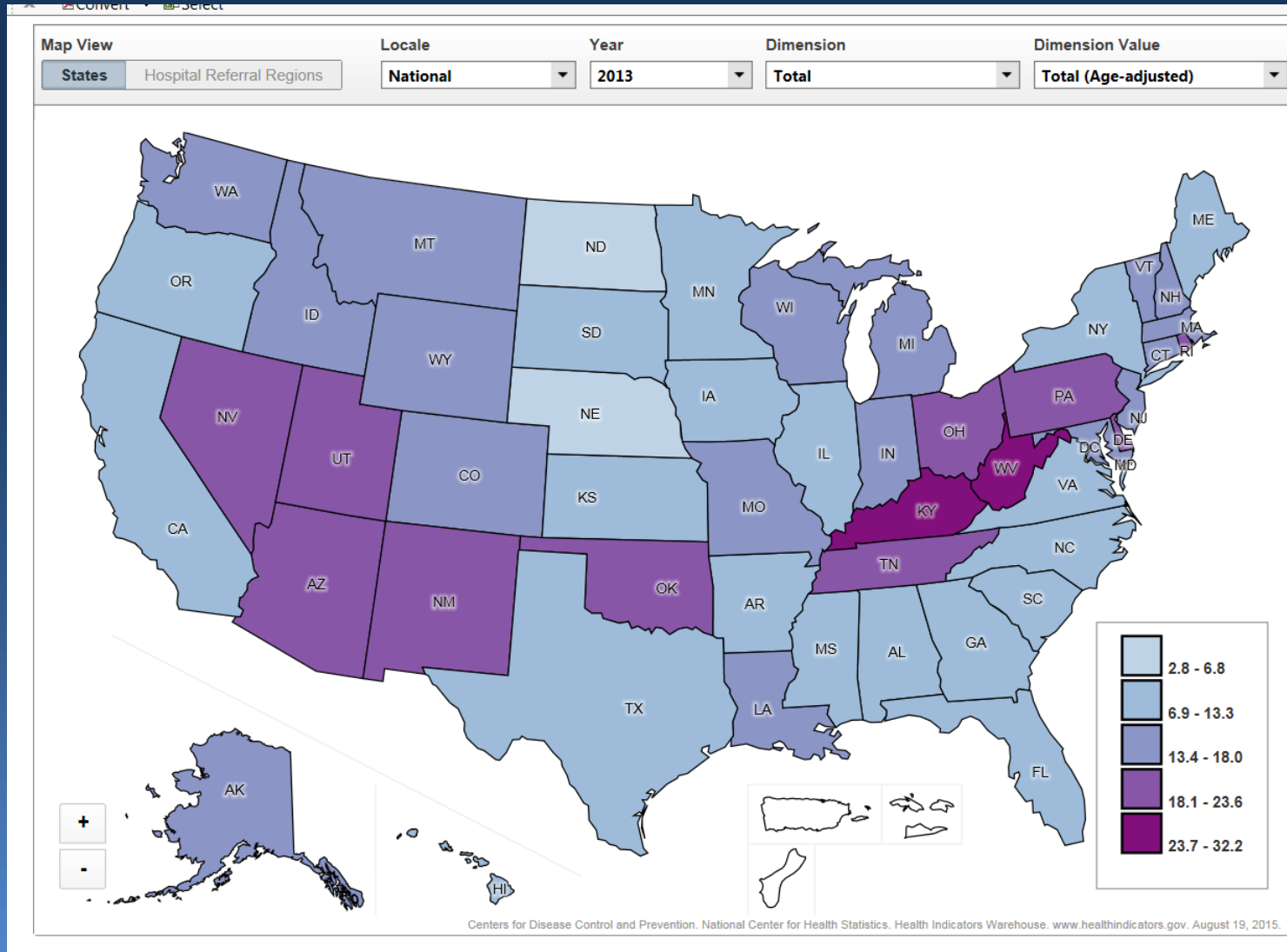


Exercise 7-Drug poisoning deaths 2013

➤ Choose two states

- Compare drug-poisoning deaths
- Show the information using a map

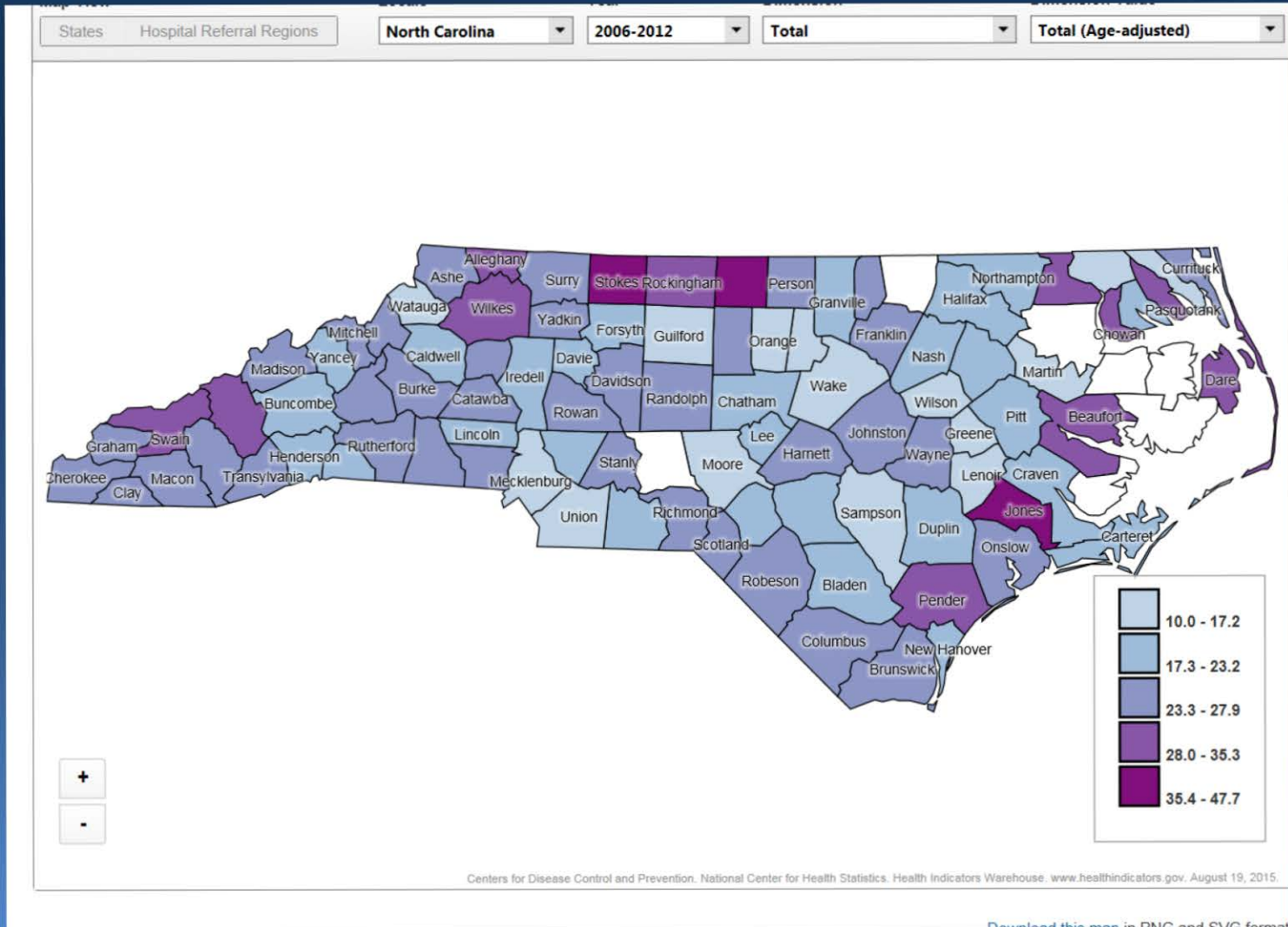
Exercise 7-Mapping Drug Poisoning Deaths



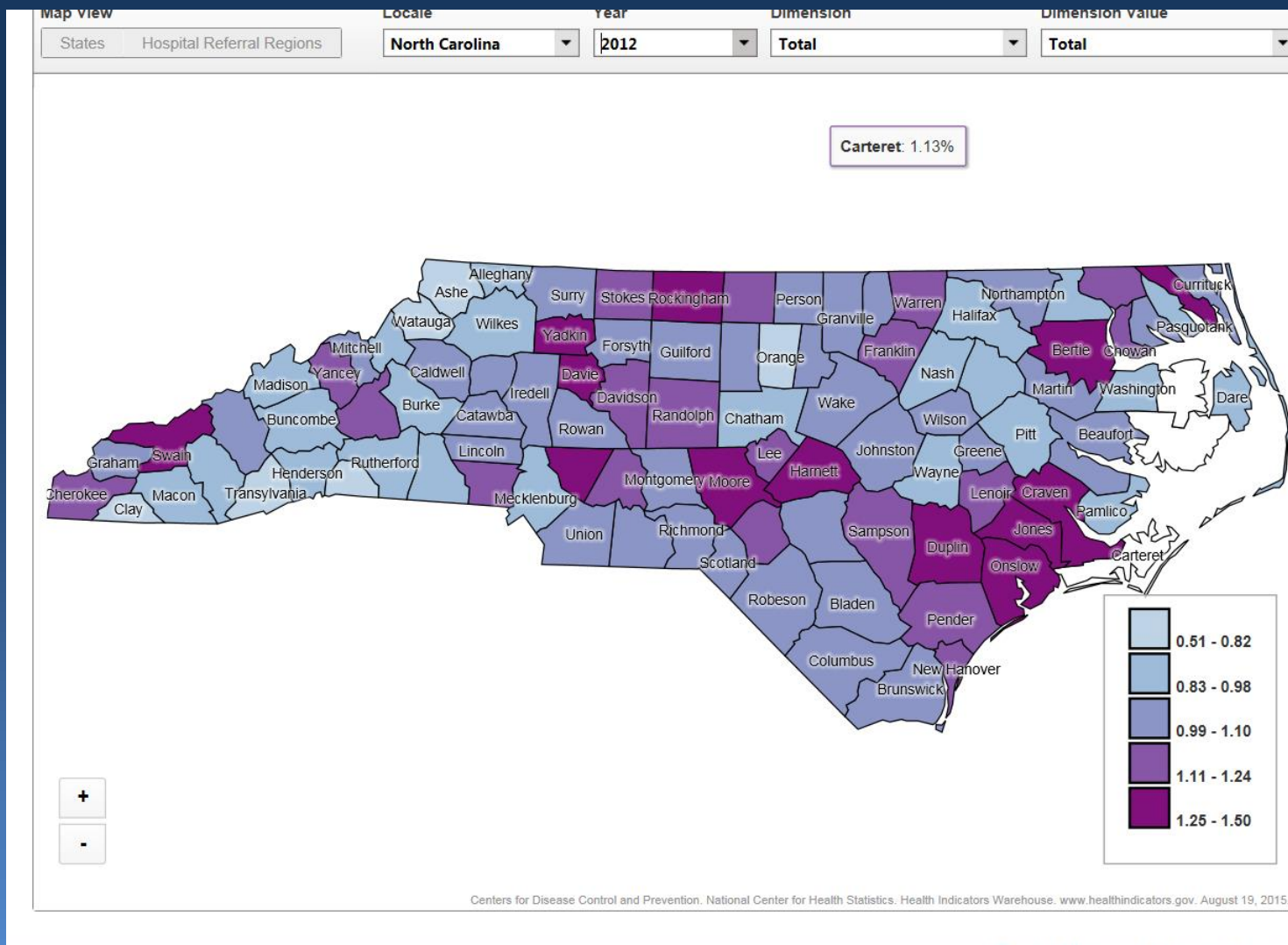
Exercise 8-Mapping and Comparing with in an Indicator

- Choose one of the following pairs of indicators for a state:
 - Cigarette smoking: adults (BRFSS) and Lung cancer Medicare beneficiaries (percent)
 - Heart disease deaths and obesity: adults (BRFSS)
- Do they look similar for your state?
- For one of the indicators, are there differences in county, sex, age, gender, race?

Cigarette smoking: adults (BRFSS)



Lung cancer Medicare beneficiaries (percent)



Heart disease deaths



This indicator contains National, State and County data.

Map View

States

Hospital Referral Regions

Locale

North Carolina

Year

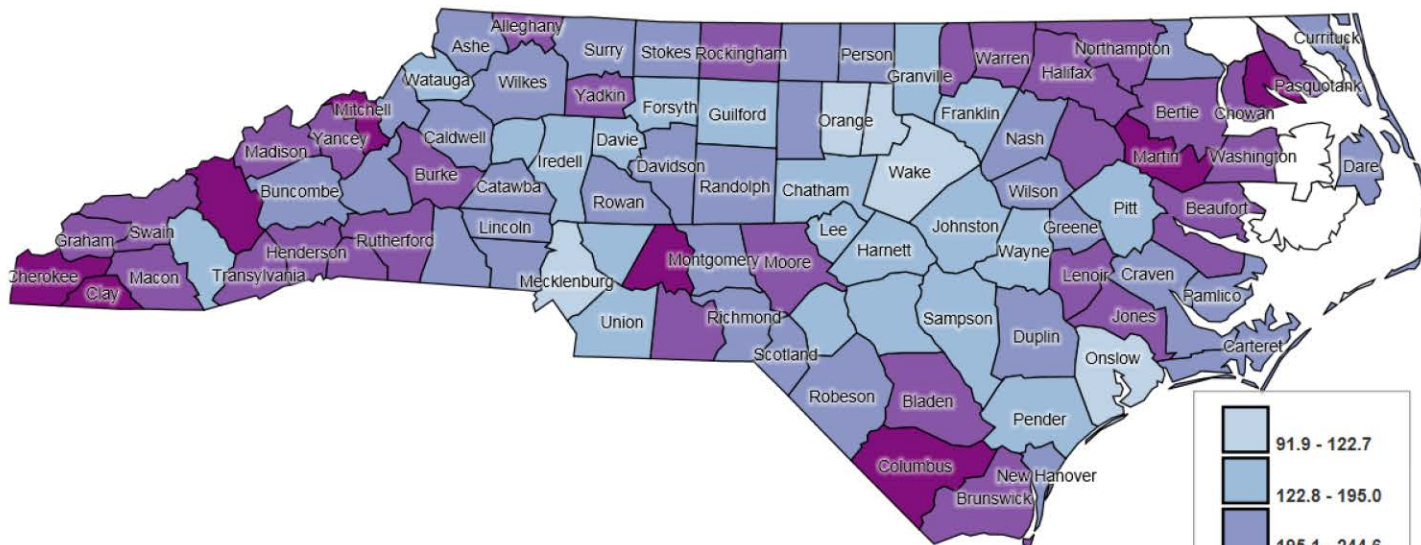
2013

Dimension

Total

Dimension Value

Total



+

91.9 - 122.7

122.8 - 195.0

195.1 - 244.6

244.7 - 313.3

313.4 - 415.7

Obesity: adults (BRFSS)



This indicator contains **State and County** data.

Map View

States

Hospital Referral Regions

Locale

North Carolina

Year

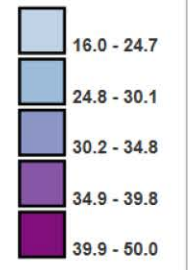
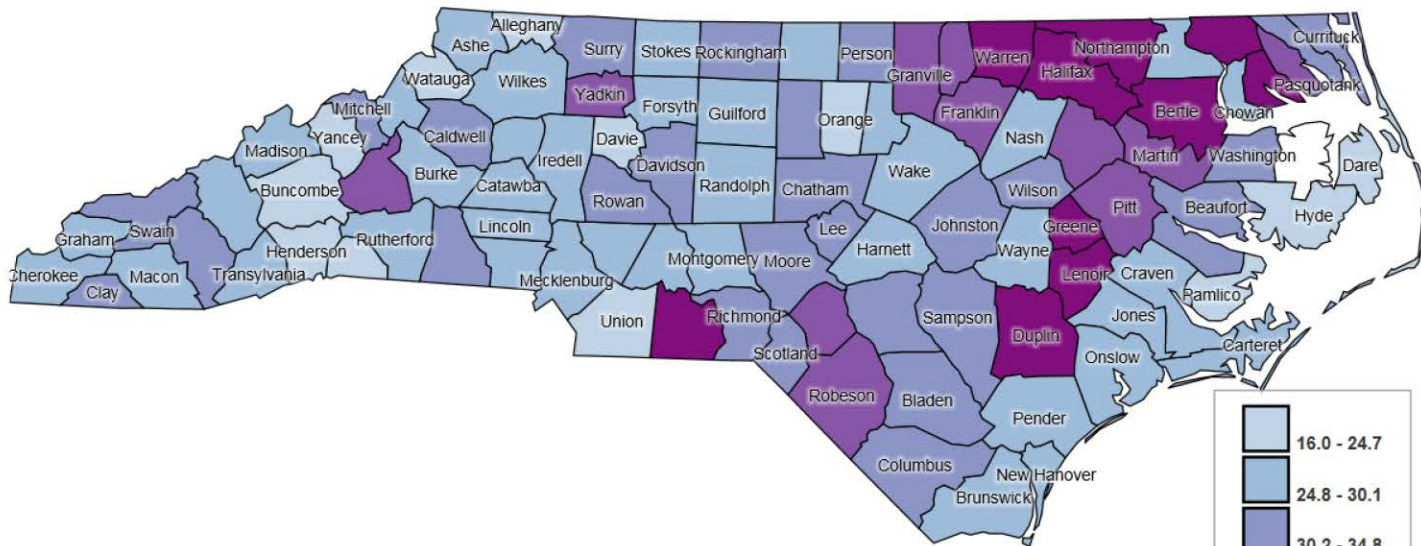
2006-2012

Dimension

Total

Dimension Value

Total (Age-adjusted)



Exercise 9-Hospital Referral Regions

- Find the difference in acute hospital readmissions (percent)
 - Is there a difference between two hospital referral regions in your state?

Initiatives

Initiatives

Data Sources

Glossary

FAQ

Additional Resources

Initiatives

CMS Community Utilization & Quality Indicators (CMS)

→ See Indicators

CMS has assembled measures from Medicare claims data at the state level and for 306 Hospital Referral Regions. The measures encompass a range of data for 2008, including: Utilization measures (e.g., Emergency Department Visits and Hospital Readmissions), Quality measures (e.g., Hospital Compare, Agency for Health Research and Quality (AHRQ) Prevention Quality Indicator (PQI), and AHRQ Patient Safety Indicators (PSI)).

CMS Reports

[Medicare Data for the Health Indicators Warehouse: A Methodological Overview \(PDF\)](#)
- 149 KB

Community Health Status Indicators (HRSA, CDC, NLM, PHF)

→ See Indicators

This web-based tool provides local public health agencies access to county health status profiles for improving community health by identifying resources and setting priorities. Visit the [Community Health Status Indicators](#) home page to read about the data sources, definitions, and notes, and then explore the CHSI dataset file.

County Health Rankings (RWJF and University of WI)

→ See Indicators

This interactive website provides access to 50 state reports with rankings of each county within each state according to its health outcomes and health determinants. The County Health Rankings are a

Explore Indicators

Indicators in the HIW are categorized by the associated levels of data **by topic, by geography** and **by initiative**.

[Explore Indicators](#)

Helpful Resources

The HIW contains several resources to help you better understand the indicators.

- [Health Indicators Warehouse User's Guide \(PDF\)](#) - 933 KB
- [Health Indicators Warehouse Indicator Report \(PDF - 371 KB | Excel - 100 KB\)](#)
- [Data source descriptions](#)
- [Glossary of terms](#)
- [About the initiatives](#)
- [Frequently Asked Questions](#)

Propose an Indicator

We're interested in hearing about possible additions to the HIW. Let us know if there are ~~specific indicators you would like us to consider~~

CMS Report by Indicator-Hospice Report

Initiatives

Data Sources


Glossary

FAQ

Additional Resources

CMS Report By Indicator - Hospice Report

[← Back to Initiatives](#)

Select a different report 

View data by:

Geography

Indicator

Year

Year	Age Range	State	County/HRR
2012	Aged 65 years and over	Alabama	State
Indicator	Alabama	National	
Hospice Medicare users (count)	20,116	862,470	
Hospice Medicare utilization (percent)	3.89%	3.09%	
Hospice Medicare admissions (per 1,000 beneficiaries)	43	33	
Hospice Medicare days (per 1,000 beneficiaries)	3,629	2,235	

Home

Indicators

Resources

About

For Developers

Data Sources

Glossary

FAQ

Propose an Indicator

Suggested Citation


Privacy Policy

Accessibility

Disclaimer

Site Map

Stay Connected

 [Subscribe to the RSS Feed](#)

 [Contact Us](#)

Exercise 10-Data Source

- What is the response rate and sample size for?
 - National Health and Nutrition Examination Survey
 - National Survey of Family Growth

Exercise 11-Nursing Home Facilities

- Using an indicator table, find the state which had the greatest number of Medicare or Medicaid-certified Nursing home (Title 18/19) facilities in 2012
 - Show this same information for 2012 using a bar chart, by state
- For that particular state, what are the top two hospital referral regions containing the highest number of facilities?
 - Show this information for 2012 using a map, by hospital referral region

Nursing Home (Title 18/19) facilities

 HEALTH INDICATORS WAREHOUSE

Search for Indicators **SEARCH**

Share 

HOME **INDICATORS** RESOURCES ABOUT FOR DEVELOPERS

Nursing home (Title 18/19) facilities (number)

Data Source: POS (CMS)

Number of Medicare or Medicaid-certified Title 18/19 (nursing home) facilities

[Data Source and Additional Information](#)

Overview **Table** Advanced Table Chart Map Download

 This indicator contains National, State and Hospital Referral Region data.

Locale	2012	2011	2010
National			
By Total			
Total	14,355	14,347	14,278

Nursing Home Facilities

[Data Source and Additional Information](#)

Overview Table Advanced Table Chart Map Download

i This indicator contains National, State and Hospital Referral Region data.

Map View

Year

Dimension

Dimension Value

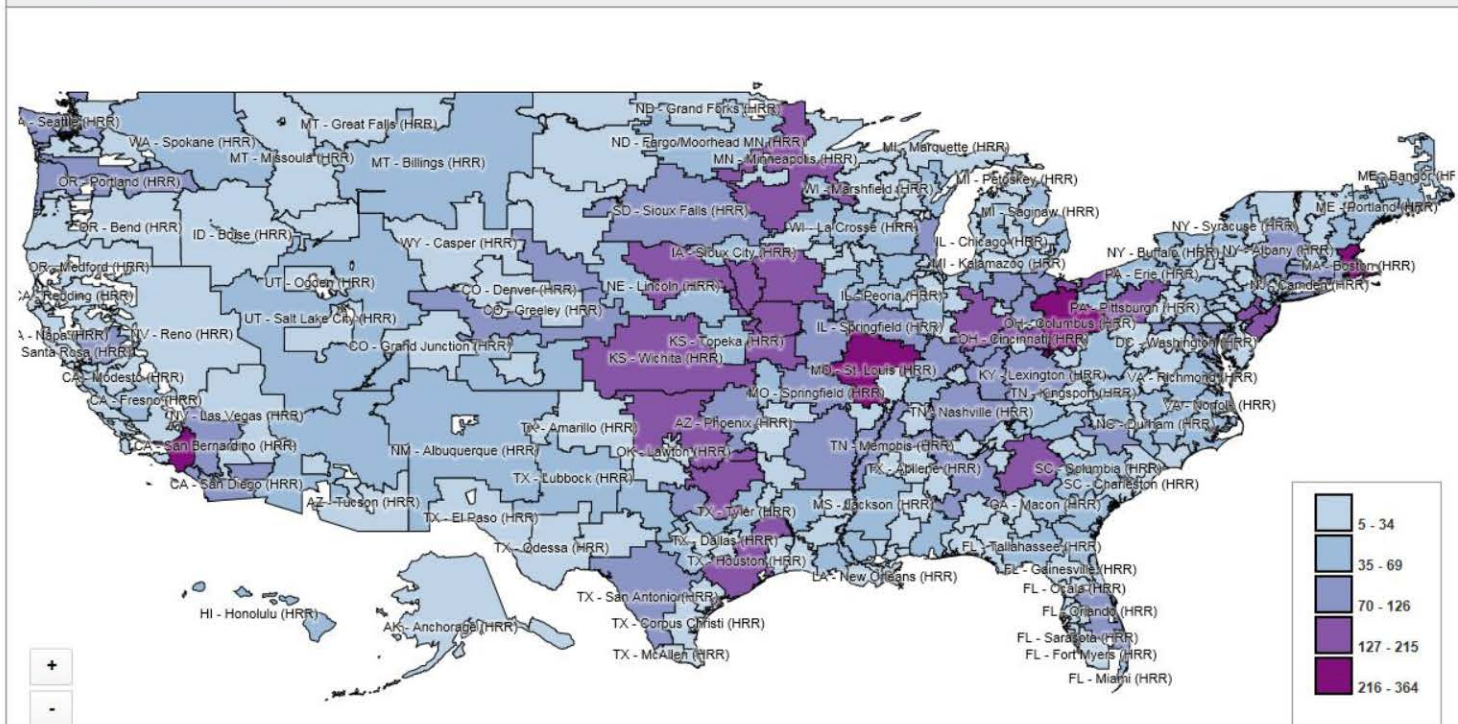
States

Hospital Referral Regions

2012

Total

Total



Additional Homepage Features

➤ What's New Section

- Shows data release and feature updates

➤ For Developer's

- HIW Indicator Entity Relationship Diagrams (ERD)
- HIW Metadata ERD

Additional Features

- **Web Services API**
 - Learn More
 - View Examples
 - View Documentation
 - Get an API Key

HIW Developers

[HIW DEVELOPERS](#)[HOME](#)[GET AN API KEY](#)[GET STARTED](#)[TRY IT](#)[DOCUMENTATION](#)

Welcome, Developers

Overview of the HIW Web Services

API

The Health Indicators Warehouse provides access to the underlying data through the use of an Application Programming Interface (API) which is designed to present information to systems with disparate architectures and technologies.

The Health Indicators Warehouse API exposes two distinct web services; a RESTful service and a SOAP-based service to provide access to the data. Detailed information required to access the underlying services can be found in the [documentation](#) section.

Access to the HIW web services API requires the use of an API key. Please [request an API key](#) if you haven't done so already.

Current Version Information

The current service version is **5**; to view changes present in this version of the services, please view the [service changes](#).

Prior versions of the services (v4 and earlier) have been deprecated and are no longer accessible.

For information regarding the relationships between the objects which make up the HIW data-model, please see the following documents:

- [HIW Indicator ERD](#)
- [HIW Metadata ERD](#)

REST services

Users can access the REST-based web services through the following URI:

<http://services.healthindicators.gov/v5/REST.svc/>

SOAP Services

JavaScript API

The HIW now has an official JavaScript API (JS API) which can be used to access all of the data within the HIW via JavaScript. While this was already possible, the new JS API should make it much easier to do so.

[More Info & Download](#)

Questions?

For Further Information

<http://www.healthindicators.gov/>
<https://github.com/HealthIndicators>
Twitter: @Health Indicator
HealthIndicators@cdc.gov

