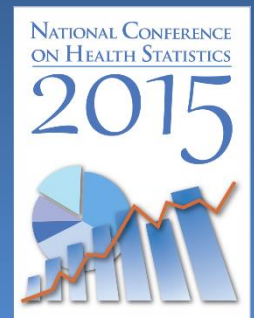


# Use of NHIS ER Data for Timely Public Health Research

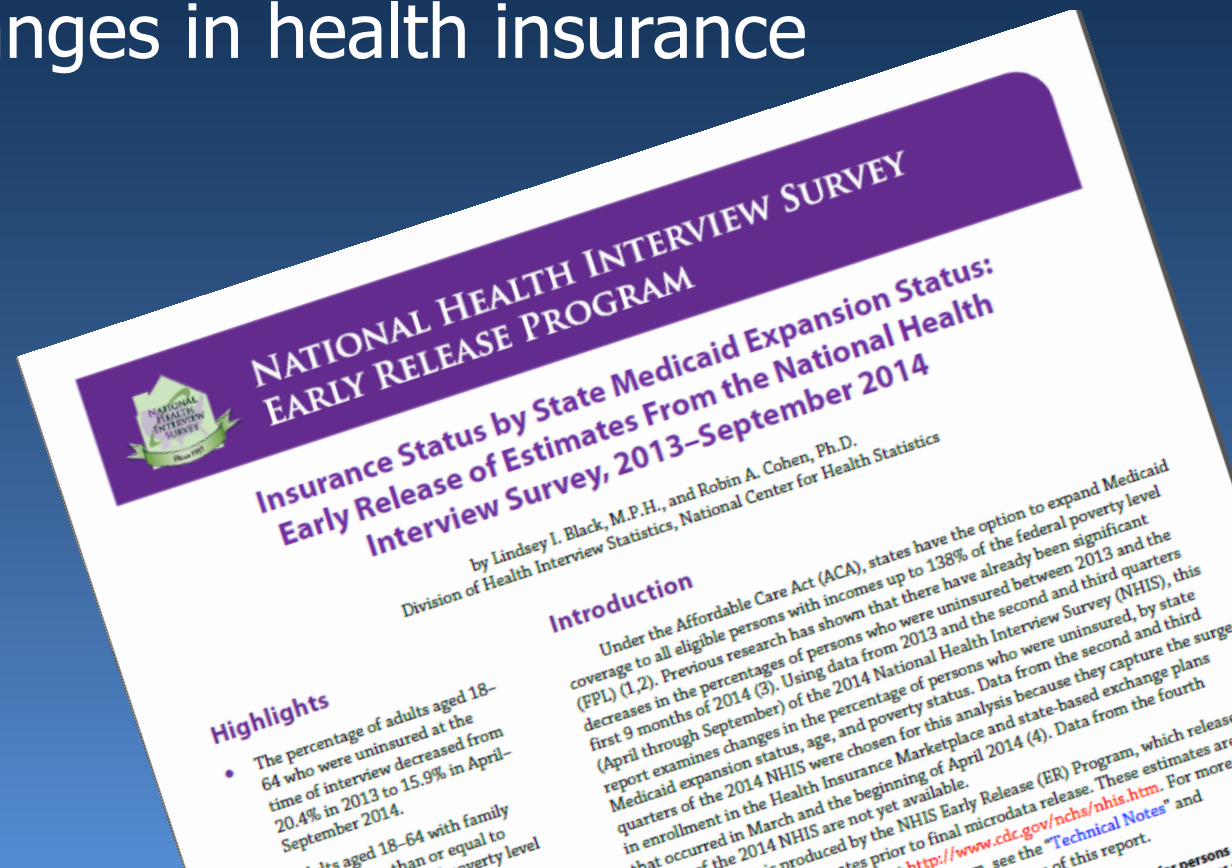
Lindsey Black, MPH  
National Center for Health Statistics



# Insurance Status by State Medicaid Expansion Status: Early Release of Estimates From the National Health Interview Survey, 2013-September 2014

Released May 2015

- Special Report using ER data to monitor time-sensitive changes in health insurance coverage



# Background

- Under the Affordable Care Act (ACA), states have the option to expand Medicaid coverage to all eligible persons with incomes up to 138% of the federal poverty level

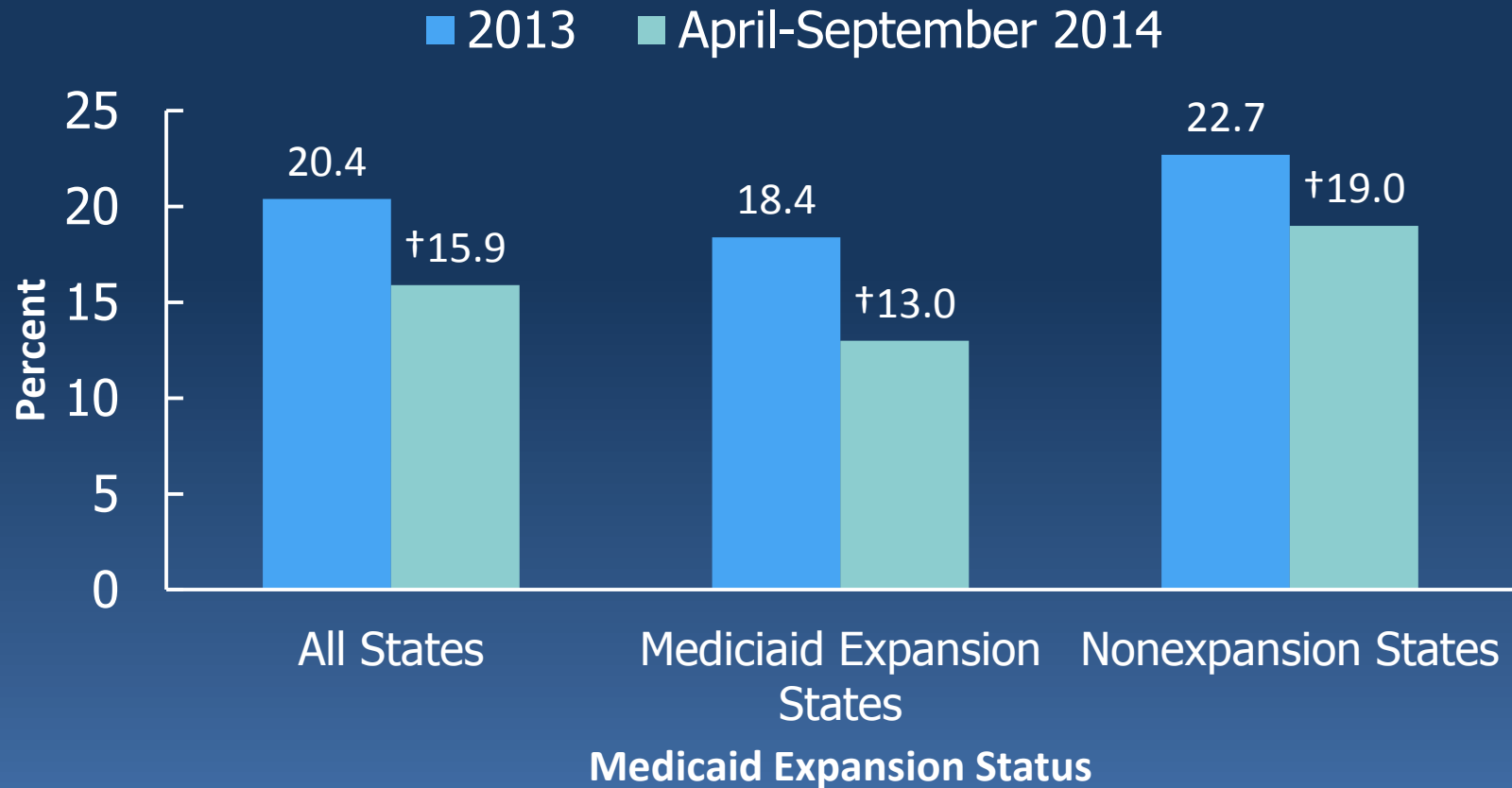
# Research Question & Methods

- How has insurance status changed by state Medicaid expansion status, age and poverty status?
  - National Health Interview Survey Early release data, 2013 and 2014 (quarters 2-3)
  - Medicaid expansion status
    - Based on status as of 10/31/13
  - Age groups (in years)
    - 0-17, 18-34, 35-44, 45-64, 65+; 18-64
  - Poverty Status
    - $\leq 138\%$  Federal Poverty Level (FPL),  $> 138\%$  and  $\leq 400\%$  FPL,  $> 400\%$  FPL

# Key Findings

- Among adults aged 18-64, the percentage uninsured decreased from 20.4% in 2013 to 15.9% in April-September 2014

# Percentage of adults 18-64 years who were uninsured at the time of interview, by state Medicaid expansion status



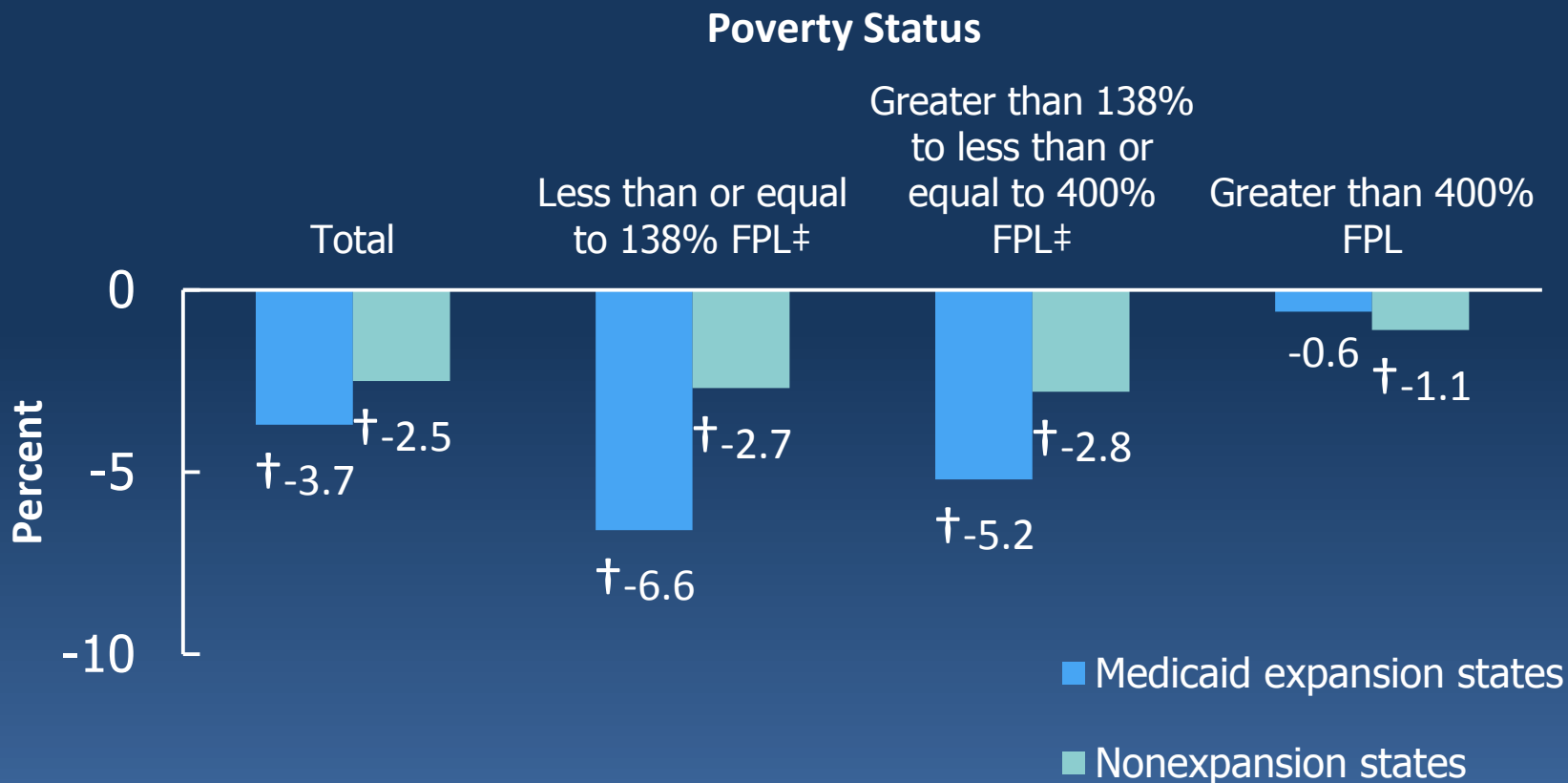
†Significant difference between 2013 and 2014 estimates of the percentage who were uninsured at the time of interview ( $p < 0.05$ ).

DATA SOURCE: CDC/NCHS, National Health Interview Survey, 2013 and 2014, Family Core component.

# Key Findings

- Larger decreases in the percentage uninsured among those in Medicaid expansion states compared to nonexpansion states for selected groups
  - All persons with  $\leq 138\%$  FPL
  - Adults 18-34 with incomes  $\leq 400\%$  FPL

# Percentage point decreases from 2013 to 2014 (April–September) of persons of all ages who were uninsured at the time of interview, by state Medicaid expansion status and poverty status



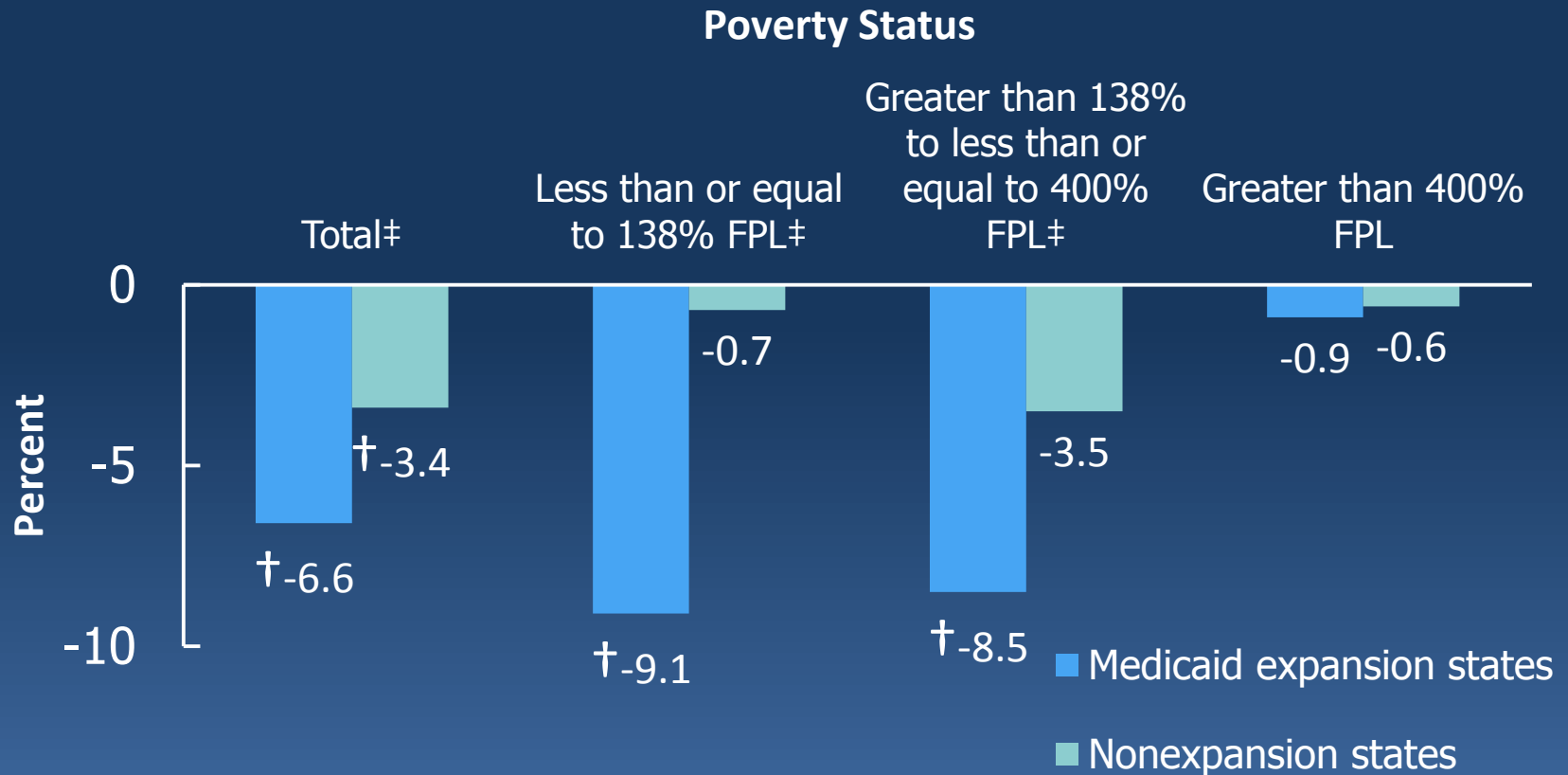
†Significant difference between 2013 and 2014 estimates of the percentage who were uninsured at the time of interview ( $p < 0.05$ ).

‡Significant difference in the absolute percentage point decrease between Medicaid expansion and nonexpansion states ( $p < 0.05$ ).

DATA SOURCE: CDC/NCHS, National Health Interview Survey, 2013 and 2014, Family Core component.



# Percentage point decreases from 2013 to 2014 (April–September) of persons aged 18-34 who were uninsured at the time of interview, by state Medicaid expansion status and poverty status



†Significant difference between 2013 and 2014 estimates of the percentage who were uninsured at the time of interview ( $p < 0.05$ ).

‡Significant difference in the absolute percentage point decrease between Medicaid expansion and nonexpansion states ( $p < 0.05$ ).

DATA SOURCE: CDC/NCHS, National Health Interview Survey, 2013 and 2014, Family Core component.

# Key Findings

- Adults aged 45-64 with incomes  $\leq 138\%$  FPL in Medicaid expansion states had the greatest absolute difference, 12.1 percentage point decrease
  - Expansion states: 30.9% (2013) to 18.8% (April-Sept 2014)
- Nonexpansion states had 6.2 percentage point decrease
  - Nonexpansion states: 41.5% (2013) to 35.3% (April-Sept 2014)

# Summary

- Early release data can be used to answer timely public health research questions
- Changes in the percentage of persons uninsured have been identified using Early Release data

**Thank you**  
**Lindsey Black, MPH**  
**[LBlack1@cdc.gov](mailto:LBlack1@cdc.gov)**

For more information on this analysis please see the report :

Black LI, Cohen RA. Insurance status by state Medicaid expansion status: Early release of estimates from the National Health Interview Survey, 2013–September 2014. National Center for Health Statistics. 2015. Available from: <http://www.cdc.gov/nchs/nhis/releases.htm>.

