



New Population Estimates and Revised Birth and Fertility Rates: 2001-2009

Brady E. Hamilton

National Center for Health Statistics



2012 National Conference on Health Statistics
August 6-8, 2012
Renaissance Washington DC
999 Ninth Street NW
Washington, District of Columbia



Acknowledgements:

Sally C. Curtin

Sharon Kirmeyer

Joyce A. Martin

T.J. Mathews

Michelle J.K. Osterman

Yashodhara Patel

Elizabeth C. Wilson

Stephanie J. Ventura

Why revise vital rates?

**To provide more accurate birth
and fertility rates incorporating
the latest census data.**

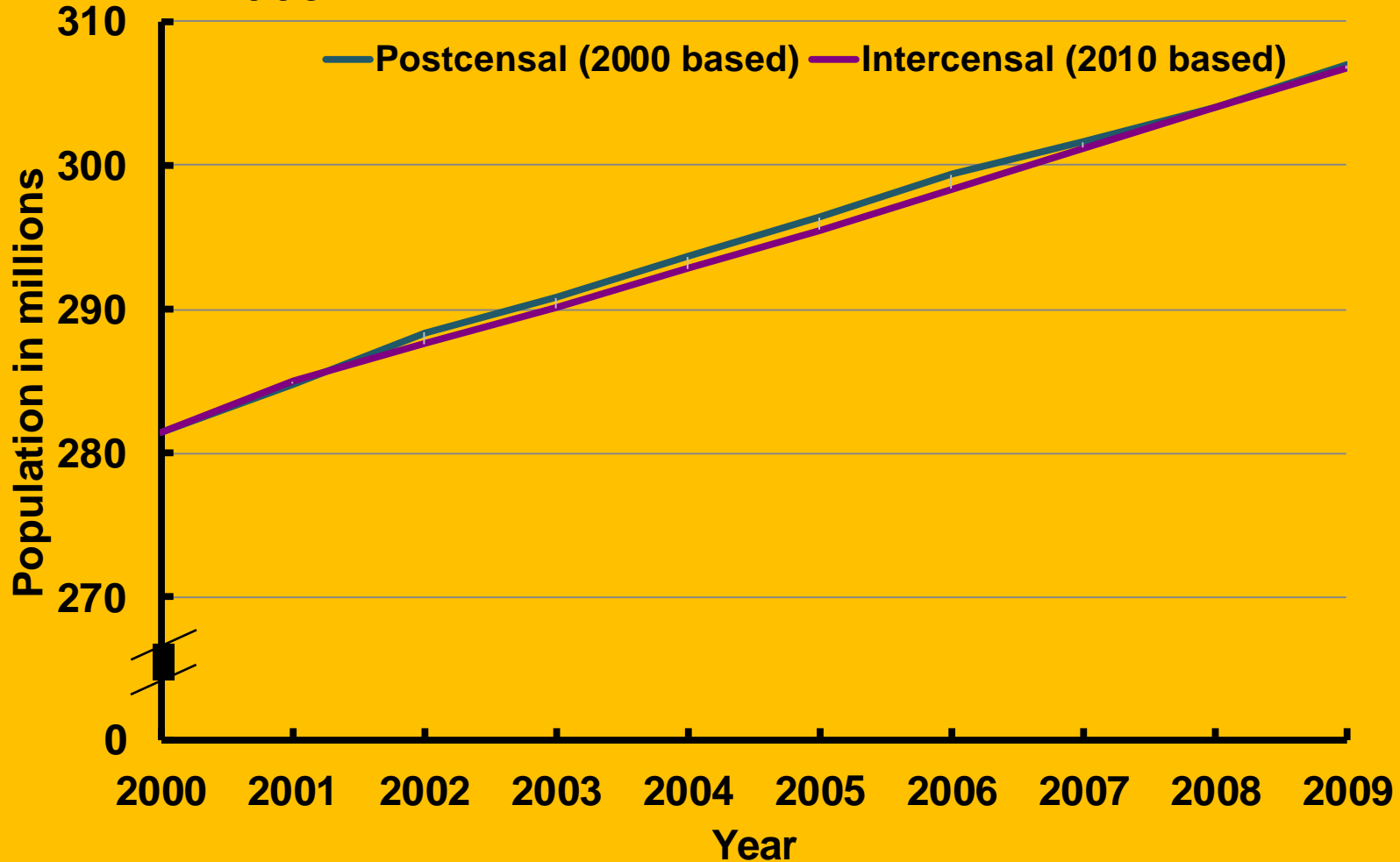
Postcensal population estimates: estimates of the population made for the years following a census, before the next census has been taken (i.e., the old, original, or unrevised estimates).

Intercensal population estimates: estimates made for years between two consecutive decennial censuses (i.e., the new or revised estimates).

NOTE: Postcensal population estimates shown in this presentation are those of the stated data (or “vintage”) year.

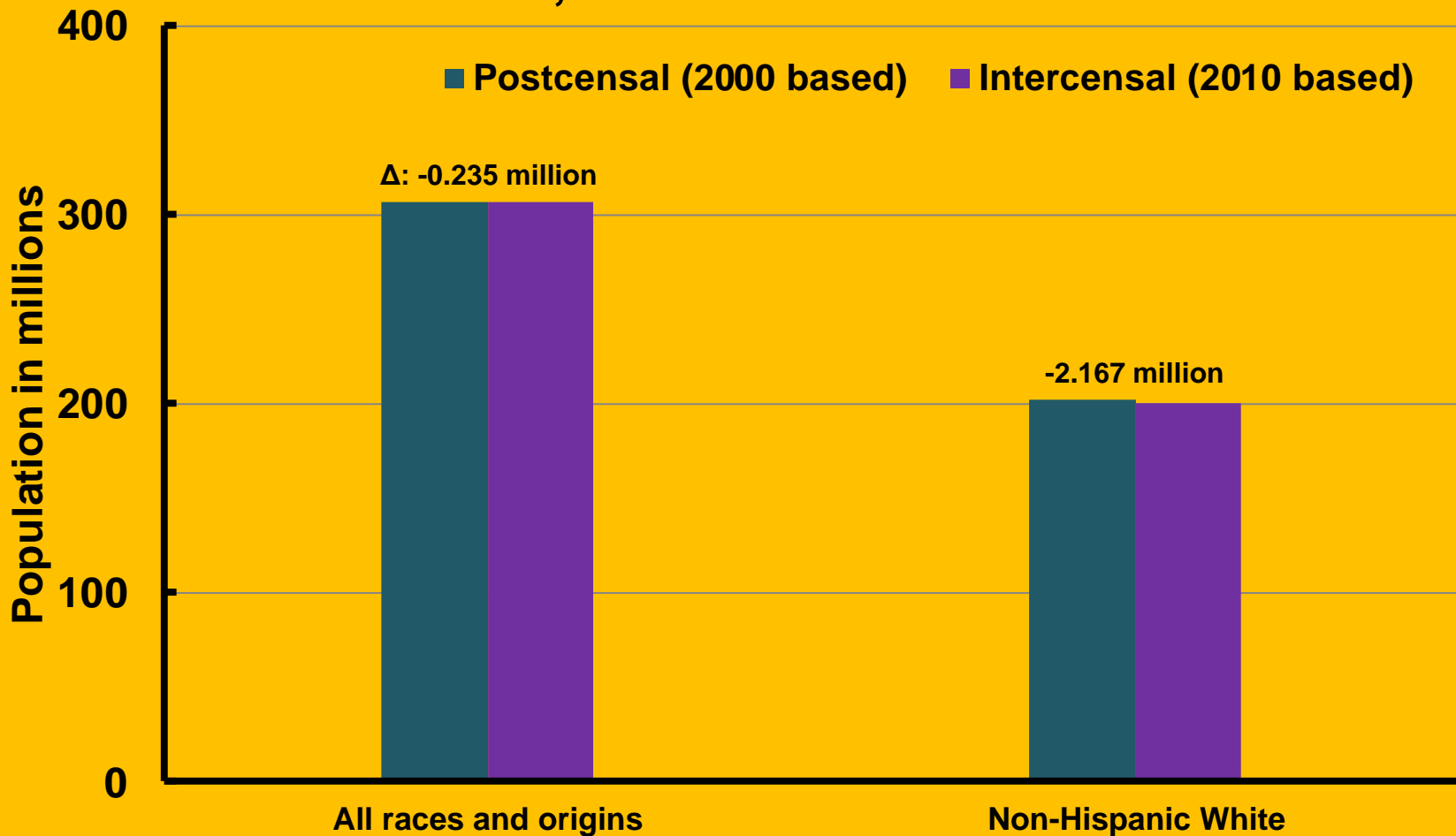
Comparison of intercensal and postcensal U.S. population estimates

Estimates of total population based on the 2000 and 2010 censuses: United States, 2000-2009



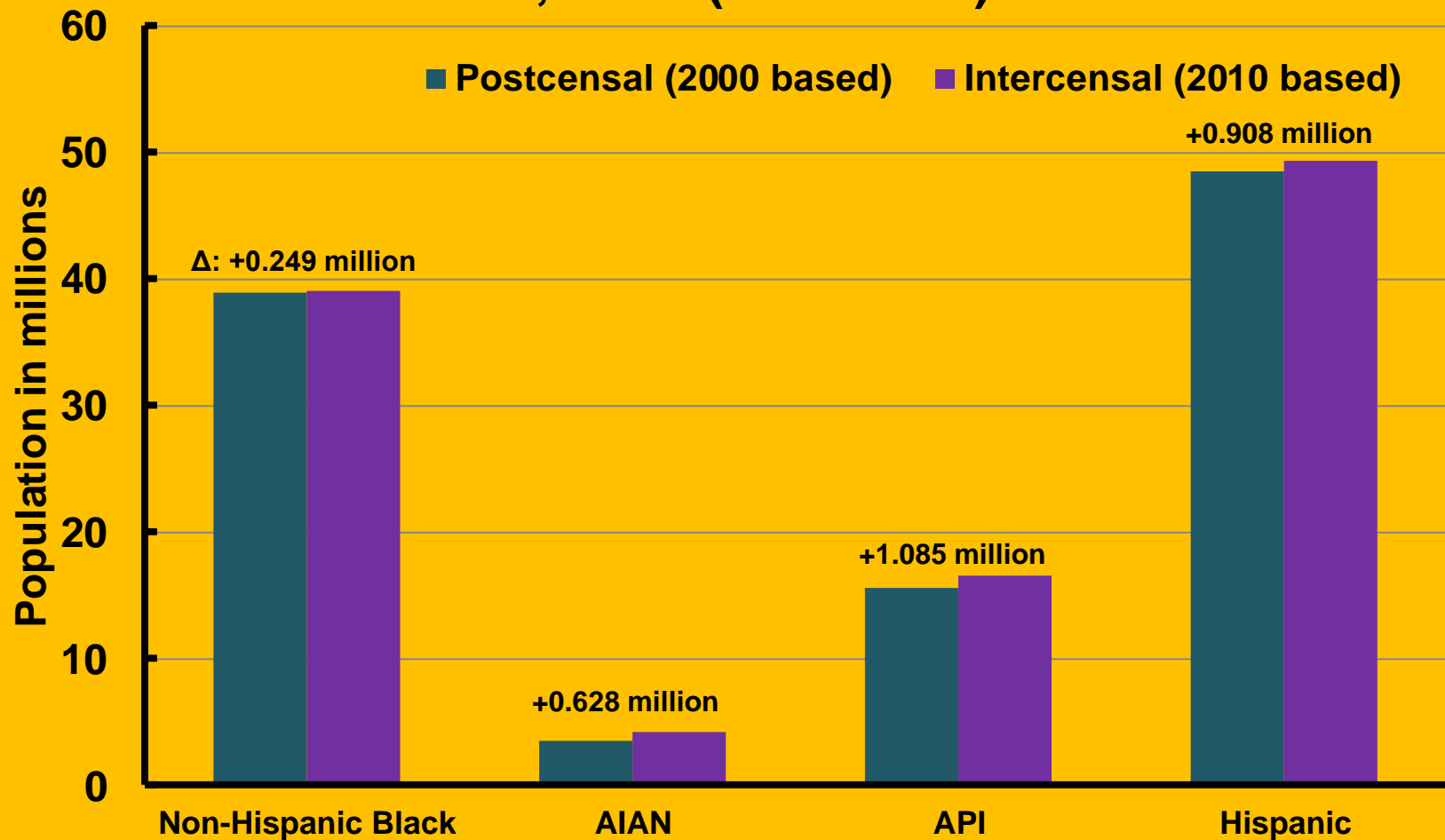
Source: CDC/NCHS, National Vital Statistics System, Bridged-Race Population Estimates

Estimates of total population by race and Hispanic origin based on the 2000 and 2010 censuses: United States, 2009



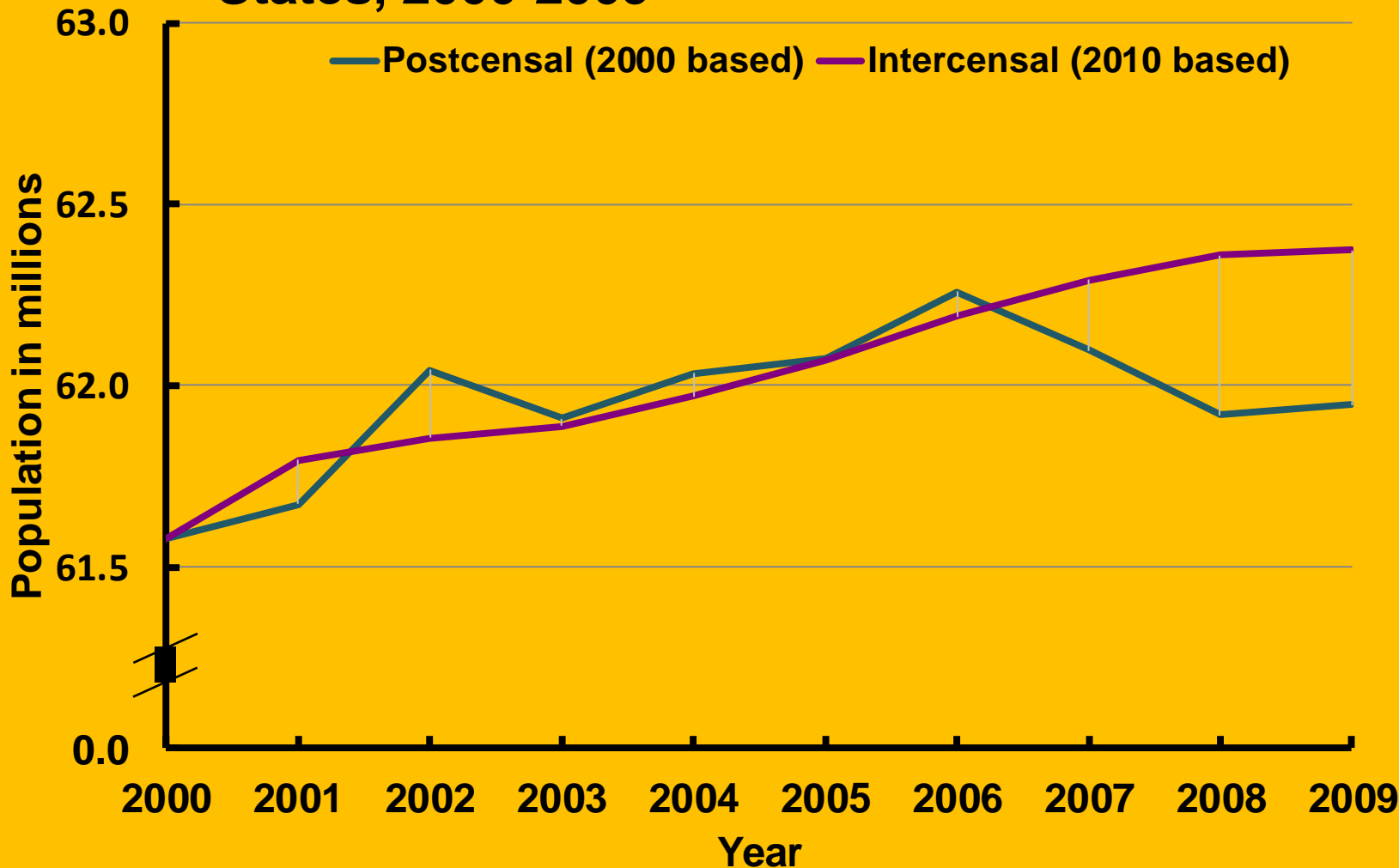
Source: CDC/NCHS, National Vital Statistics System, Bridged-Race Population Estimates

Estimates of total population by race and Hispanic origin based on the 2000 and 2010 censuses: United States, 2009 (continued)



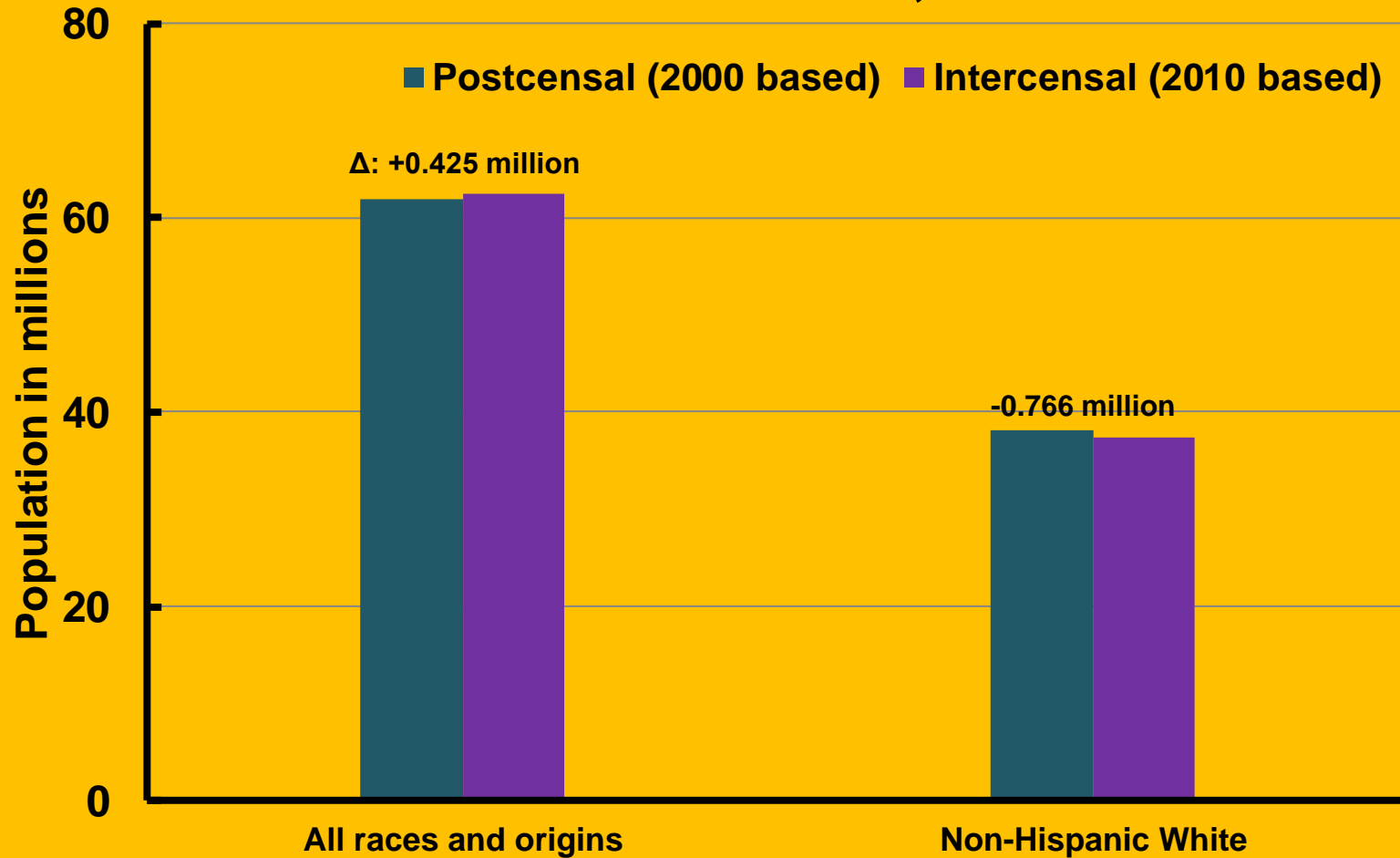
Source: CDC/NCHS, National Vital Statistics System, Bridged-Race Population Estimates

Population estimates of women age 15-44 based on the 2000 and 2010 censuses: United States, 2000-2009



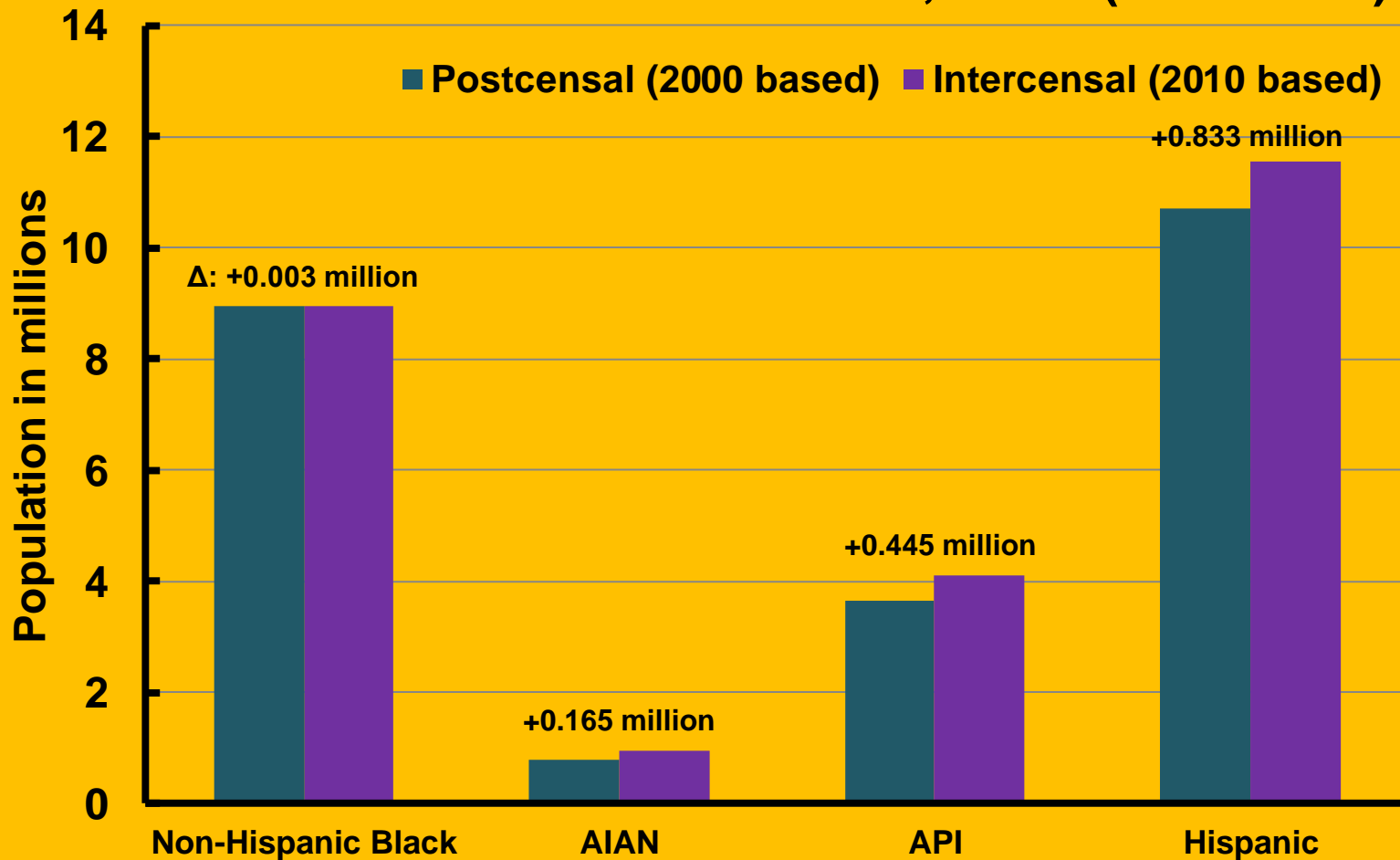
Source: CDC/NCHS, National Vital Statistics System, Bridged-Race Population Estimates

Population estimates of women age 15-44 by race and Hispanic origin based on the 2000 and 2010 censuses: United States, 2009



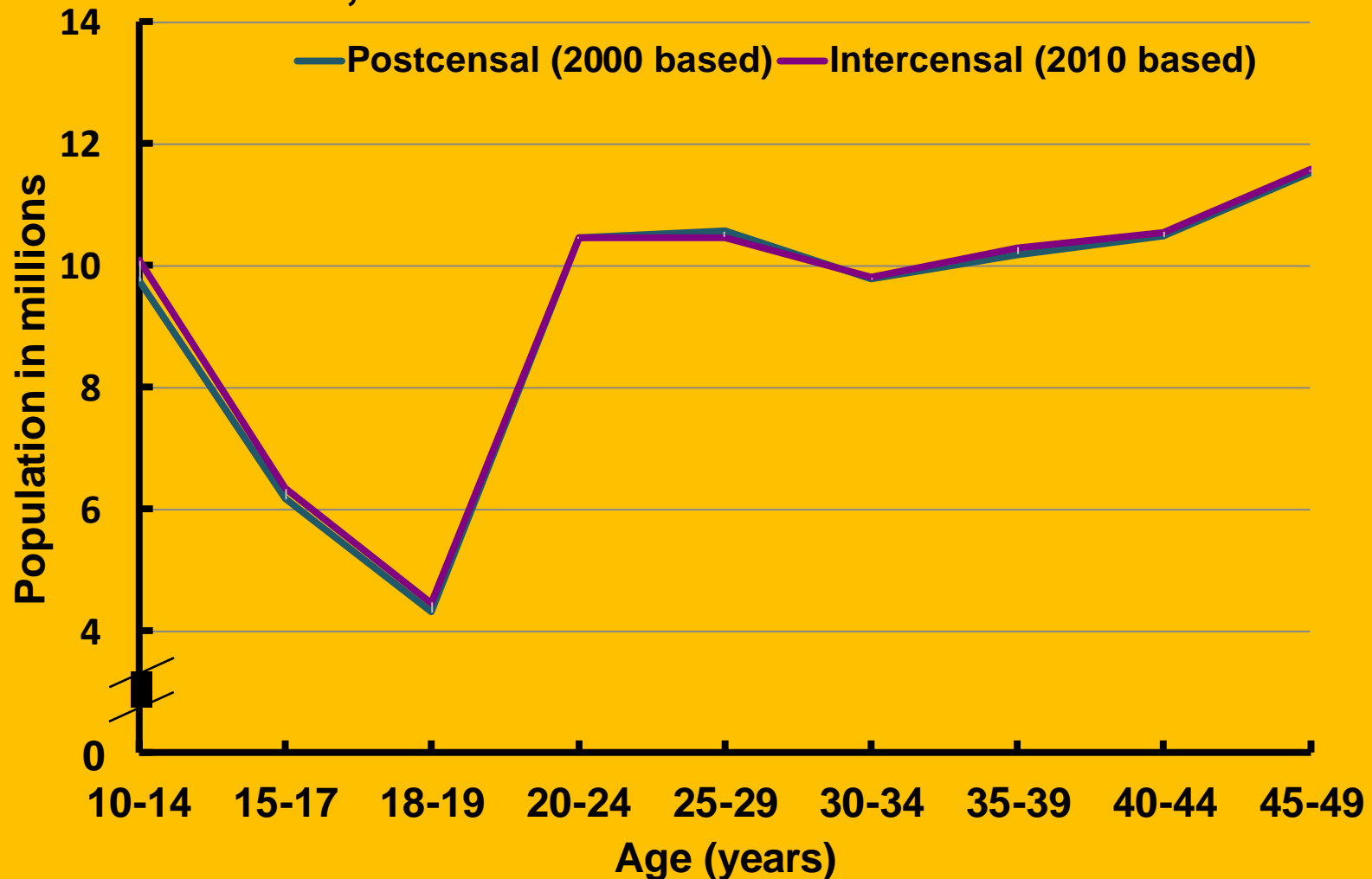
Source: CDC/NCHS, National Vital Statistics System, Bridged-Race Population Estimates

Population estimates of women age 15-44 by race and Hispanic origin based on the 2000 and 2010 censuses: United States, 2009 (continued)



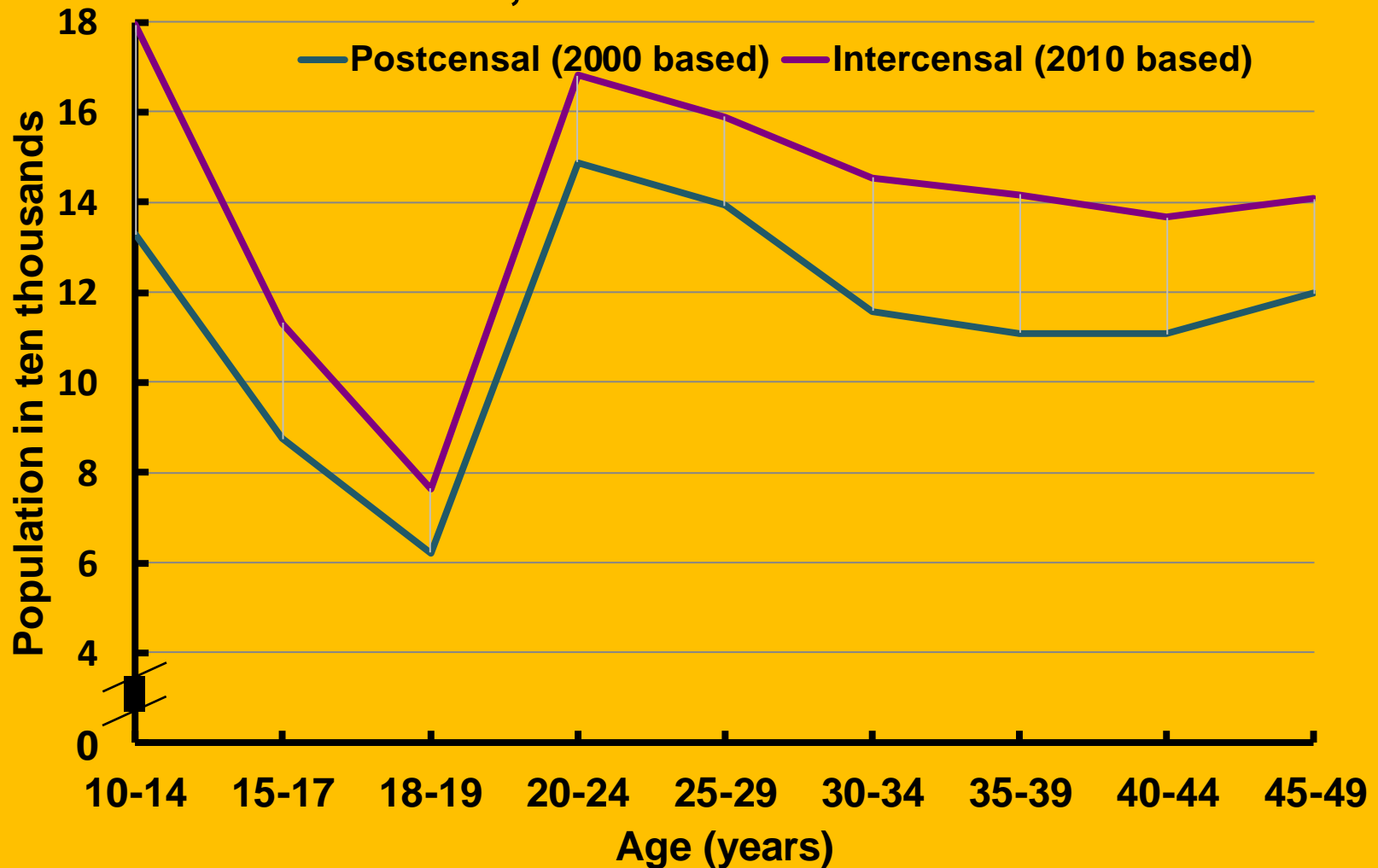
Source: CDC/NCHS, National Vital Statistics System, Bridged-Race Population Estimates

Population estimates of women age 10-49 based on the 2000 and 2010 censuses: United States, 2009



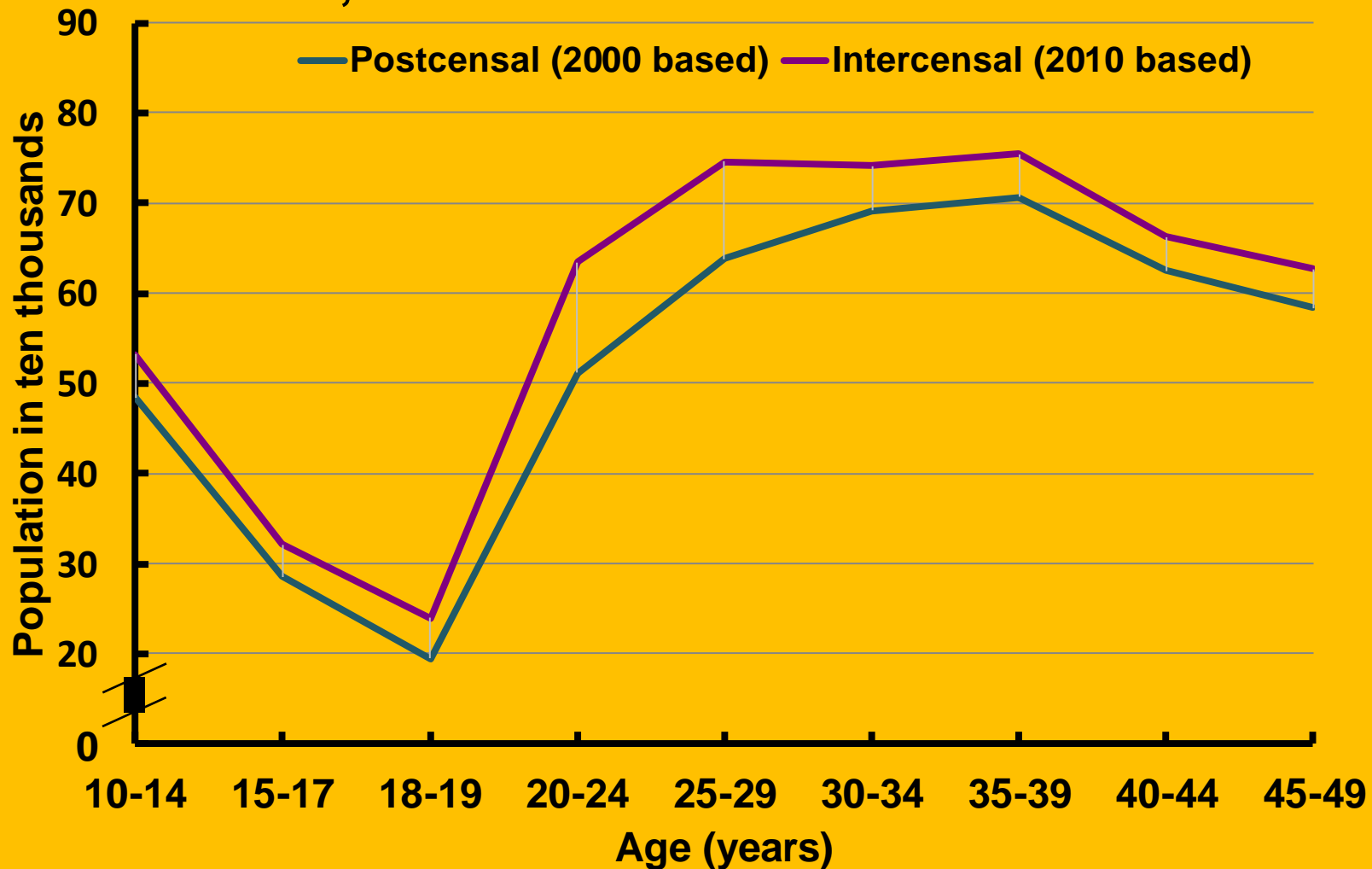
Source: CDC/NCHS, National Vital Statistics System, Bridged-Race Population Estimates

Population estimates of AIAN women age 10-49 based on the 2000 and 2010 censuses: United States, 2009



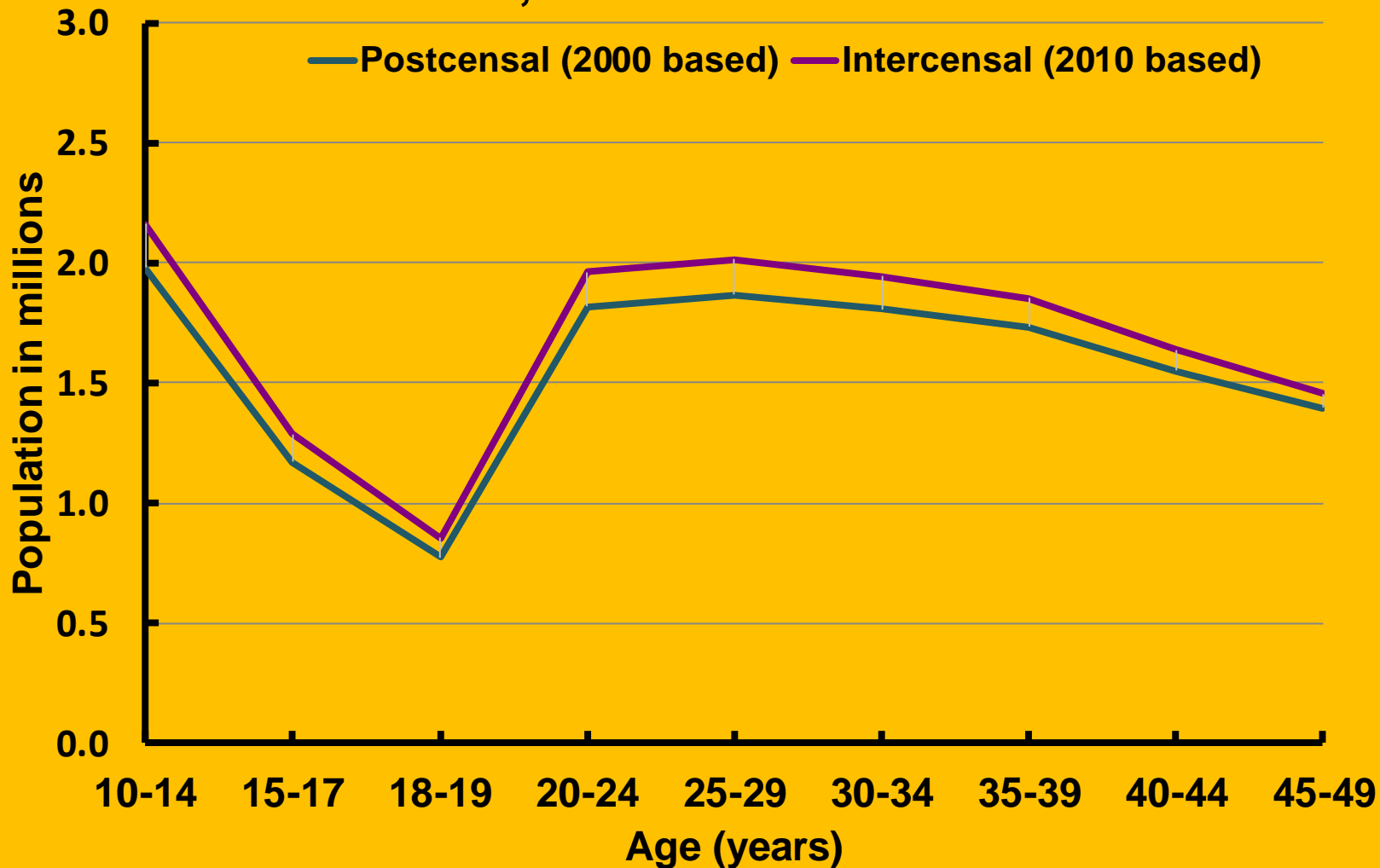
Source: CDC/NCHS, National Vital Statistics System, Bridged-Race Population Estimates

Population estimates of API women age 10-49 based on the 2000 and 2010 censuses: United States, 2009



Source: CDC/NCHS, National Vital Statistics System, Bridged-Race Population Estimates

Population estimates of Hispanic women age 10-49 based on the 2000 and 2010 censuses: United States, 2009



Source: CDC/NCHS, National Vital Statistics System, Bridged-Race Population Estimates

Comparison of intercensal- and postcensal-based U.S. birth and fertility rates

Note:

Numerator (i.e., same number of births)

Denominator (i.e., different population estimates)

Births: Preliminary Data for 2010

by Brady E. Hamilton, Ph.D.; Joyce A. Martin, M.P.H.; and Stephanie J. Ventura, M.A., D.M.S.

Abstract

Objectives—This report presents preliminary data for 2010 on births in the United States. U.S. data on births are shown by age, live-birth order, race, and Hispanic origin of mother. Data on marital status, cesarean delivery, preterm births, and low birthweight are also presented.

Methods—Data in this report are based on approximately 100 percent of births for 2010. Records for the few states with approximately 99.99 percent of records received are weighted to independent control

counts of all birth comparisons are Results—The 4,000,279, 3 percent per 1,000 women births per 1,000 number of births groups in 2010, 9 percent to 94.9 to historic low

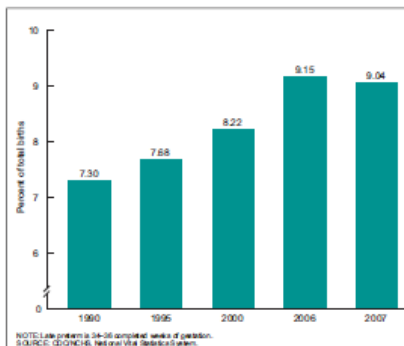


Figure 1. Late preterm birth rates: United States, selected years final 1990–2007

Estimated Pregnancy Rates and Rates of Pregnancy Outcomes for the United States, 1990–2008

by Stephanie J. Ventura, M.A., Sally C. Curtin, M.A., Joyce C. Abma, Ph.D., Division of Vital Statistics; and Stanley K. Henshaw, Ph.D., The Guttmacher Institute

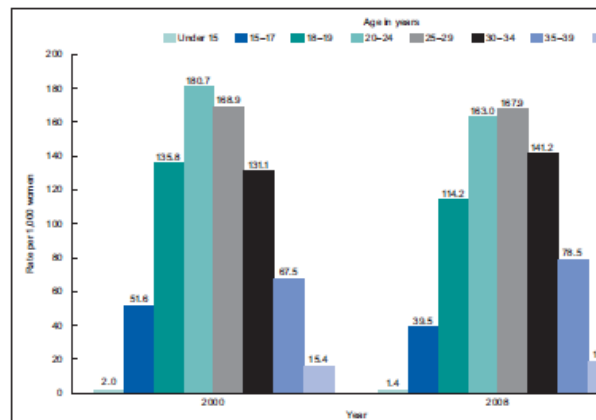


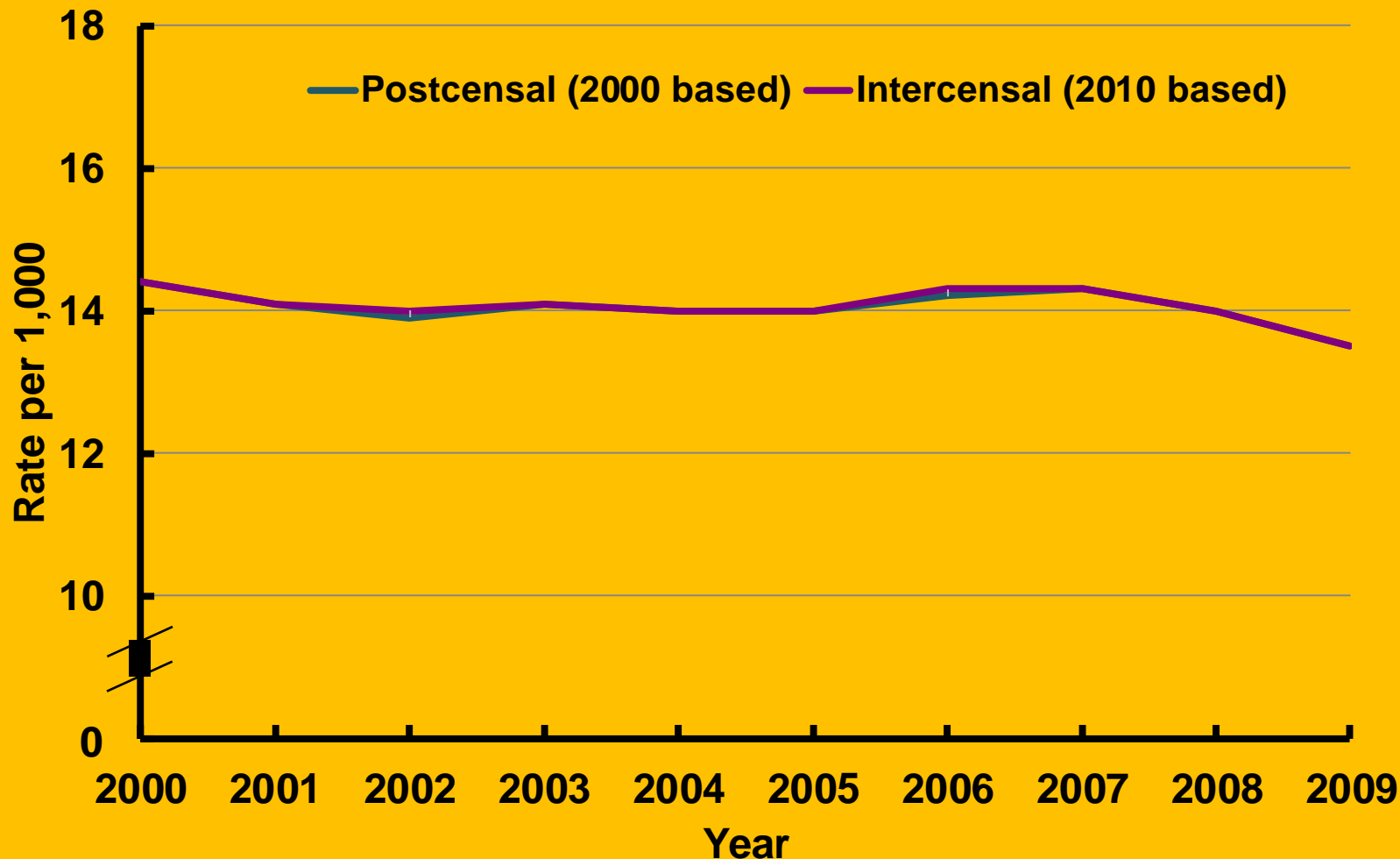
Figure 1. Pregnancy rates, by age of woman: United States, 2000 and 2008

Births: Final Data for 2010

by Joyce A. Martin, M.P.H.; Brady E. Hamilton, Ph.D.; Stephanie J. Ventura, M.A.; Michelle J.K. Osterman, M.H.S.; Sharon Kirmeyer, Ph.D.; T.J. Mathews, M.S.; and Elizabeth Wilson M.P.H., Division of Vital Statistics.

A reformatted, typeset version of this report will replace the current version.

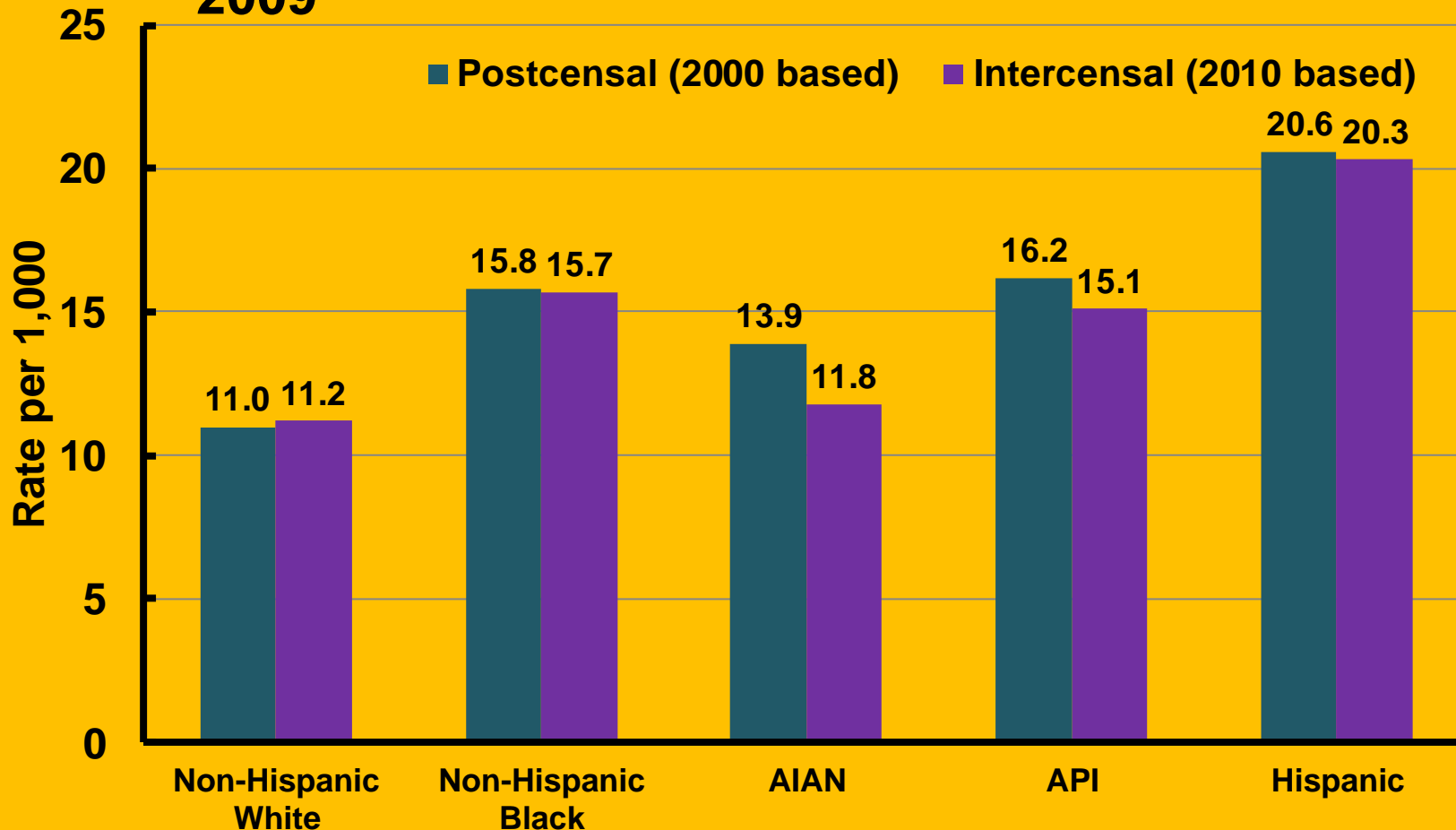
Crude birth rate based on the 2000 and 2010 censuses: United States, 2000-2009



Sources: Hamilton BE, Martin JA, Ventura SJ. Births: Preliminary data for 2010. National vital statistics reports; vol 60 no 2. Hyattsville, MD: National Center for Health Statistics. 2011.

Martin JA, Hamilton BE, Ventura SJ, et.al. Births: Final data for 2009. National vital statistics reports; vol 60 no 1, Hyattsville, MD: National Center for Health Statistics. 2011.

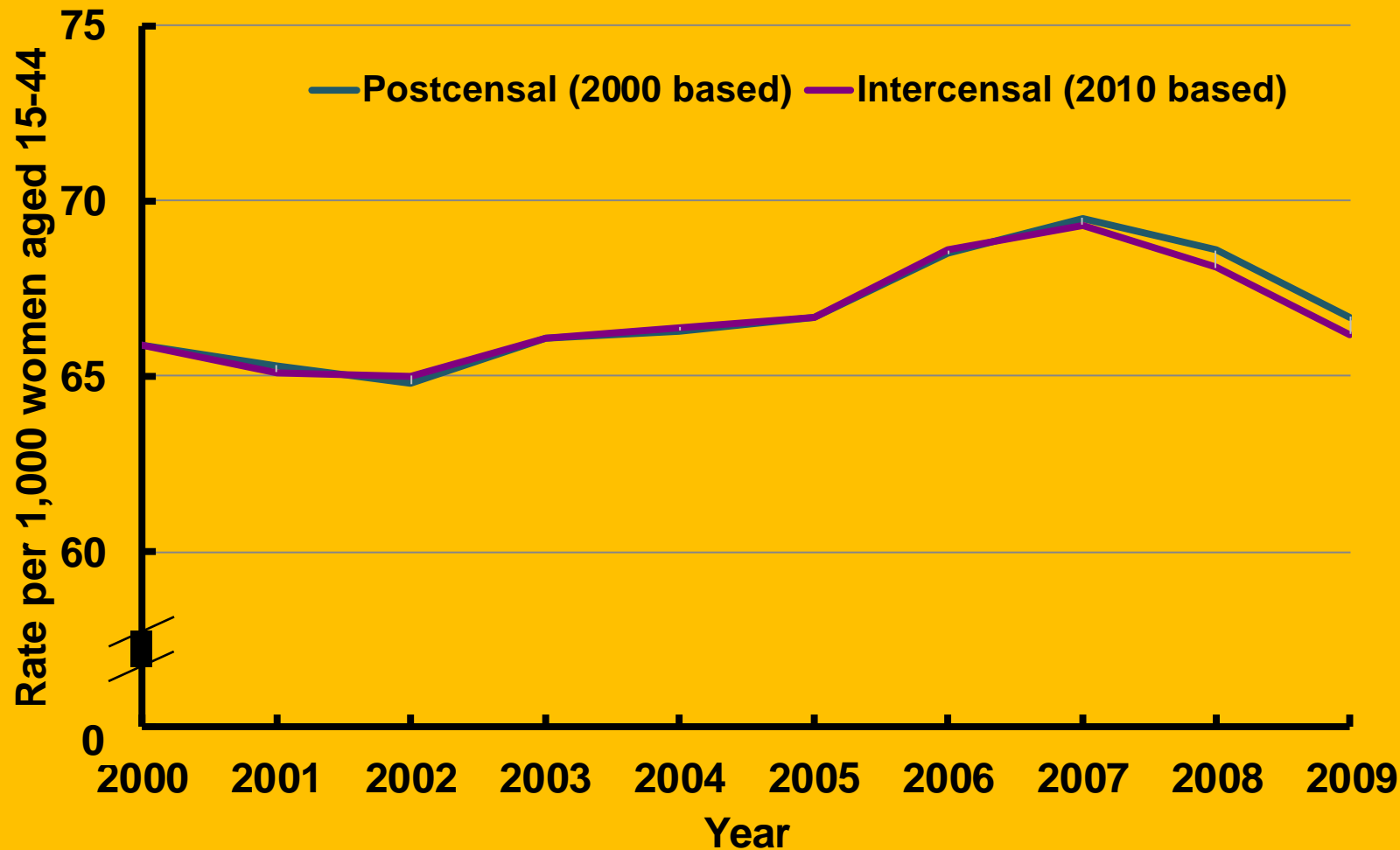
Crude birth rate by race and Hispanic origin based on the 2000 and 2010 censuses: United States, 2009



Sources: Hamilton BE, Martin JA, Ventura SJ. Births: Preliminary data for 2010. National vital statistics reports; vol 60 no 2. Hyattsville, MD: National Center for Health Statistics. 2011.

Martin JA, Hamilton BE, Ventura SJ, et.al. Births: Final data for 2009. National vital statistics reports; vol 60 no 1, Hyattsville, MD: National Center for Health Statistics. 2011.

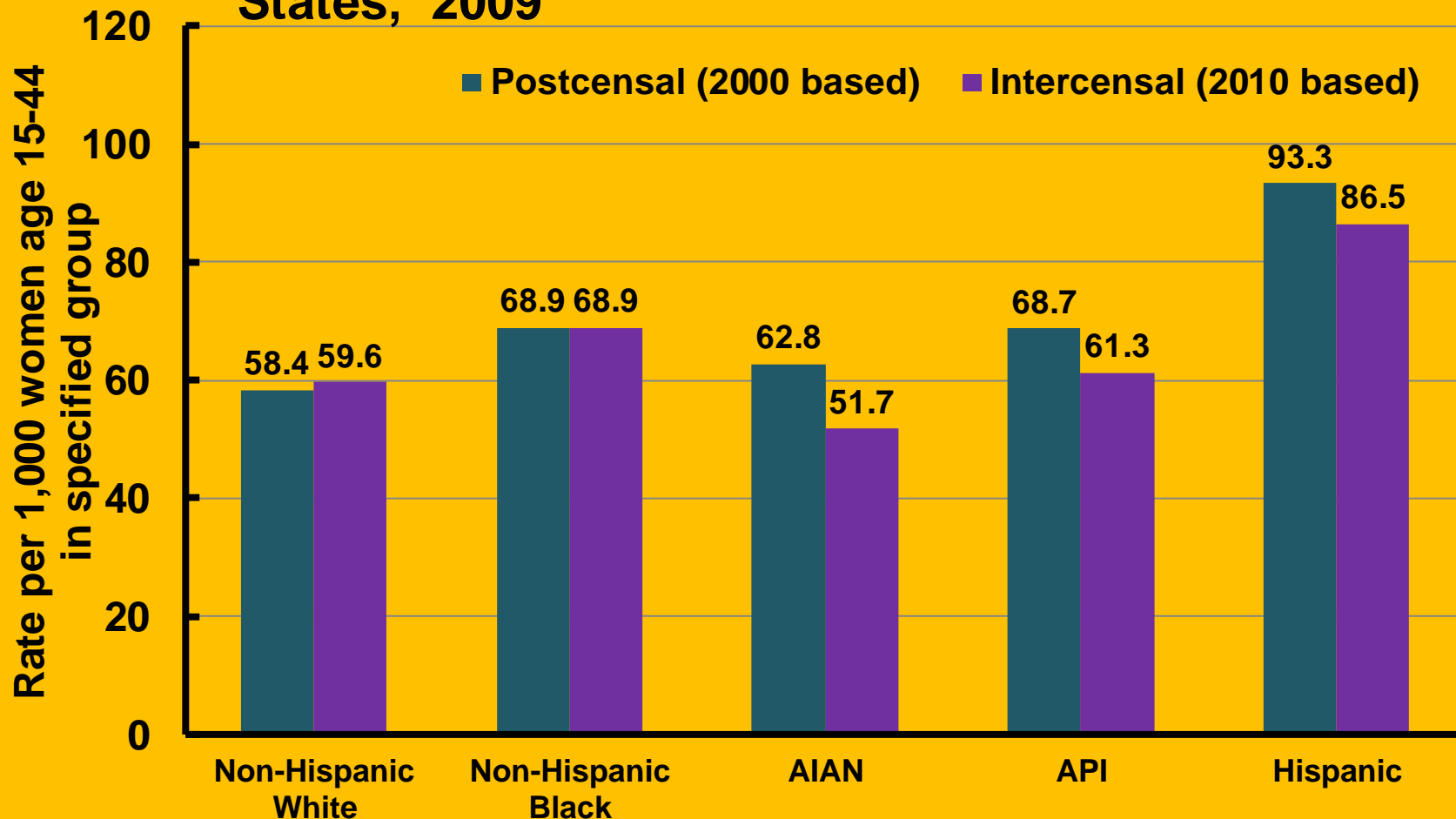
General fertility rate based on the 2000 and 2010 censuses: United States, 2000-2009



Sources: Hamilton BE, Martin JA, Ventura SJ. Births: Preliminary data for 2010. National vital statistics reports; vol 60 no 2. Hyattsville, MD: National Center for Health Statistics. 2011.

Martin JA, Hamilton BE, Ventura SJ, et.al. Births: Final data for 2009. National vital statistics reports; vol 60 no 1. Hyattsville, MD: National Center for Health Statistics. 2011.

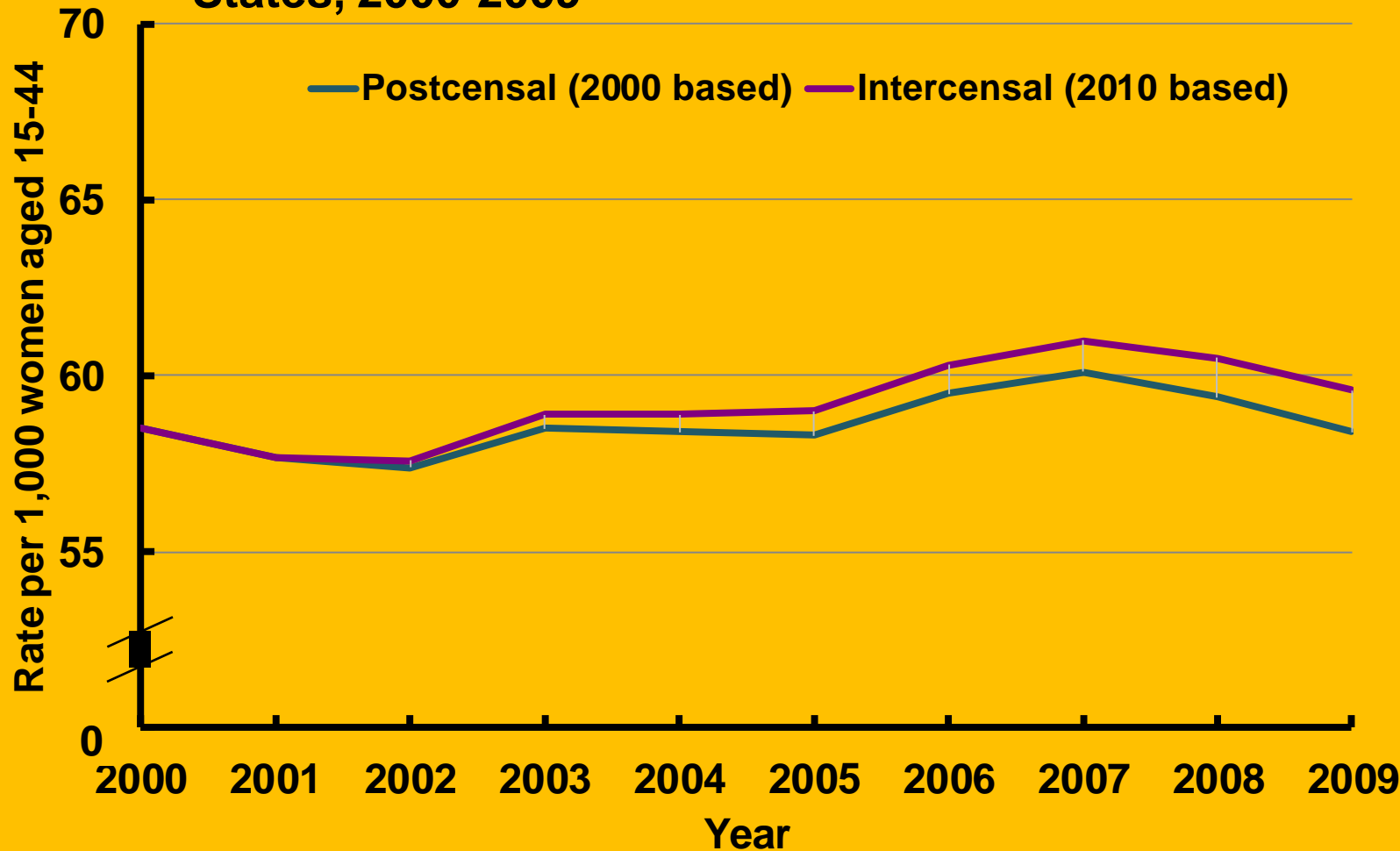
General fertility rate by race and Hispanic origin based on the 2000 and 2010 censuses: United States, 2009



Sources: Hamilton BE, Martin JA, Ventura SJ. Births: Preliminary data for 2010. National vital statistics reports; vol 60 no 2. Hyattsville, MD: National Center for Health Statistics. 2011.

Martin JA, Hamilton BE, Ventura SJ, et.al. Births: Final data for 2009. National vital statistics reports; vol 60 no 1. Hyattsville, MD: National Center for Health Statistics. 2011.

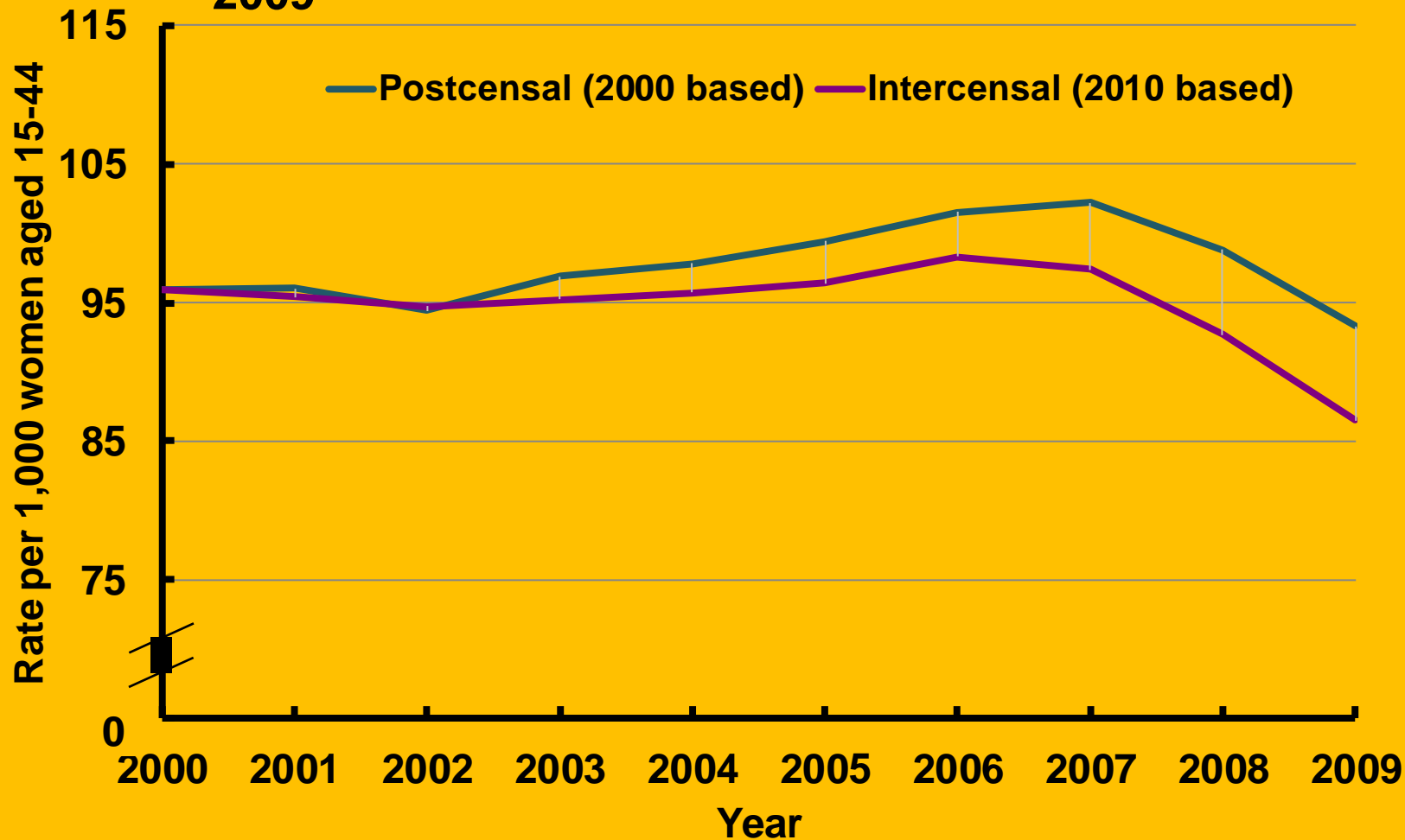
General fertility rate for non-Hispanic white women based on the 2000 and 2010 censuses: United States, 2000-2009



Sources: Hamilton BE, Martin JA, Ventura SJ. Births: Preliminary data for 2010. National vital statistics reports; vol 60 no 2. Hyattsville, MD: National Center for Health Statistics. 2011.

Martin JA, Hamilton BE, Ventura SJ, et.al. Births: Final data for 2009. National vital statistics reports; vol 60 no 1. Hyattsville, MD: National Center for Health Statistics. 2011.

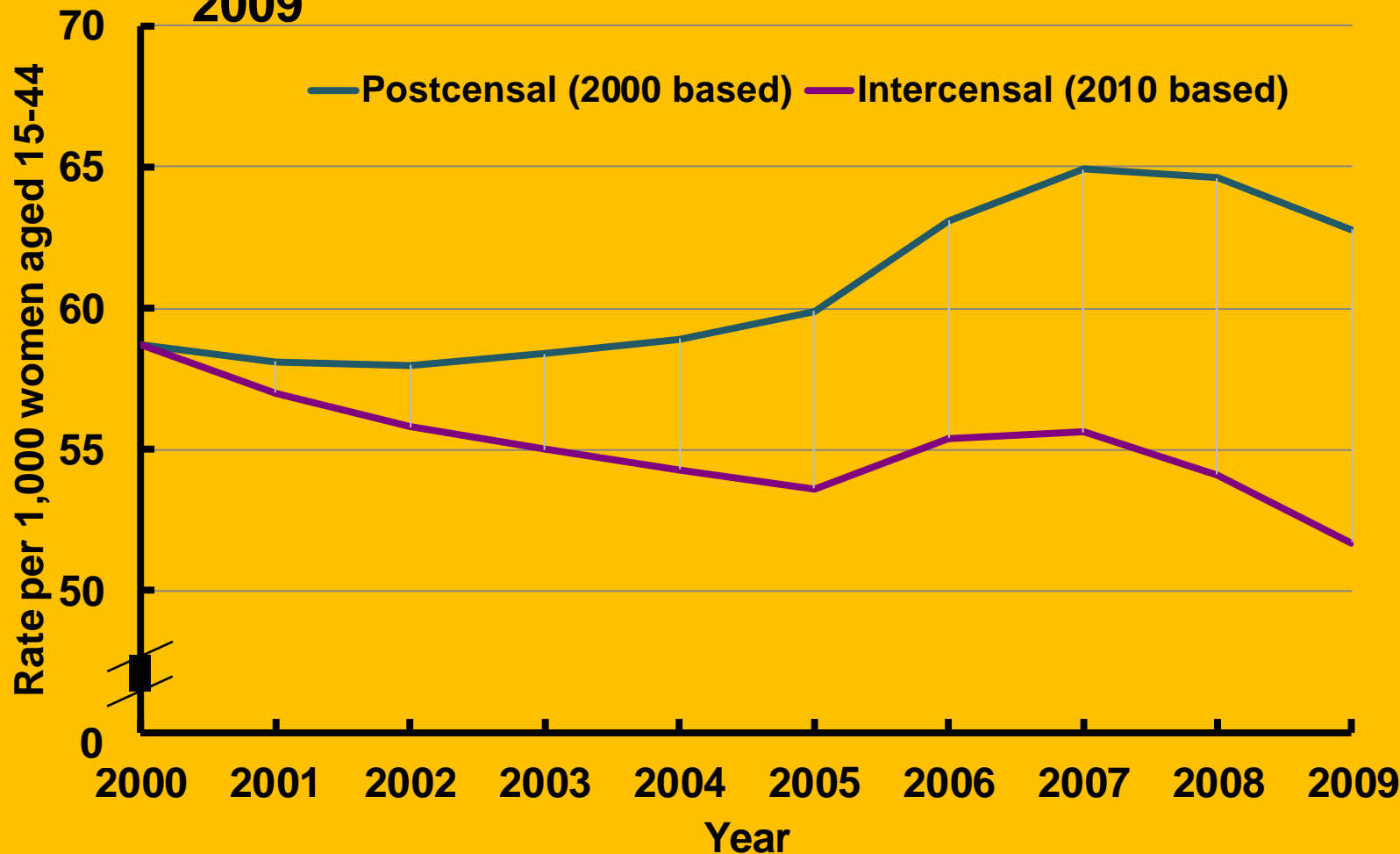
General fertility rate for Hispanic women based on the 2000 and 2010 censuses: United States, 2000-2009



Sources: Hamilton BE, Martin JA, Ventura SJ. Births: Preliminary data for 2010. National vital statistics reports; vol 60 no 2. Hyattsville, MD: National Center for Health Statistics. 2011.

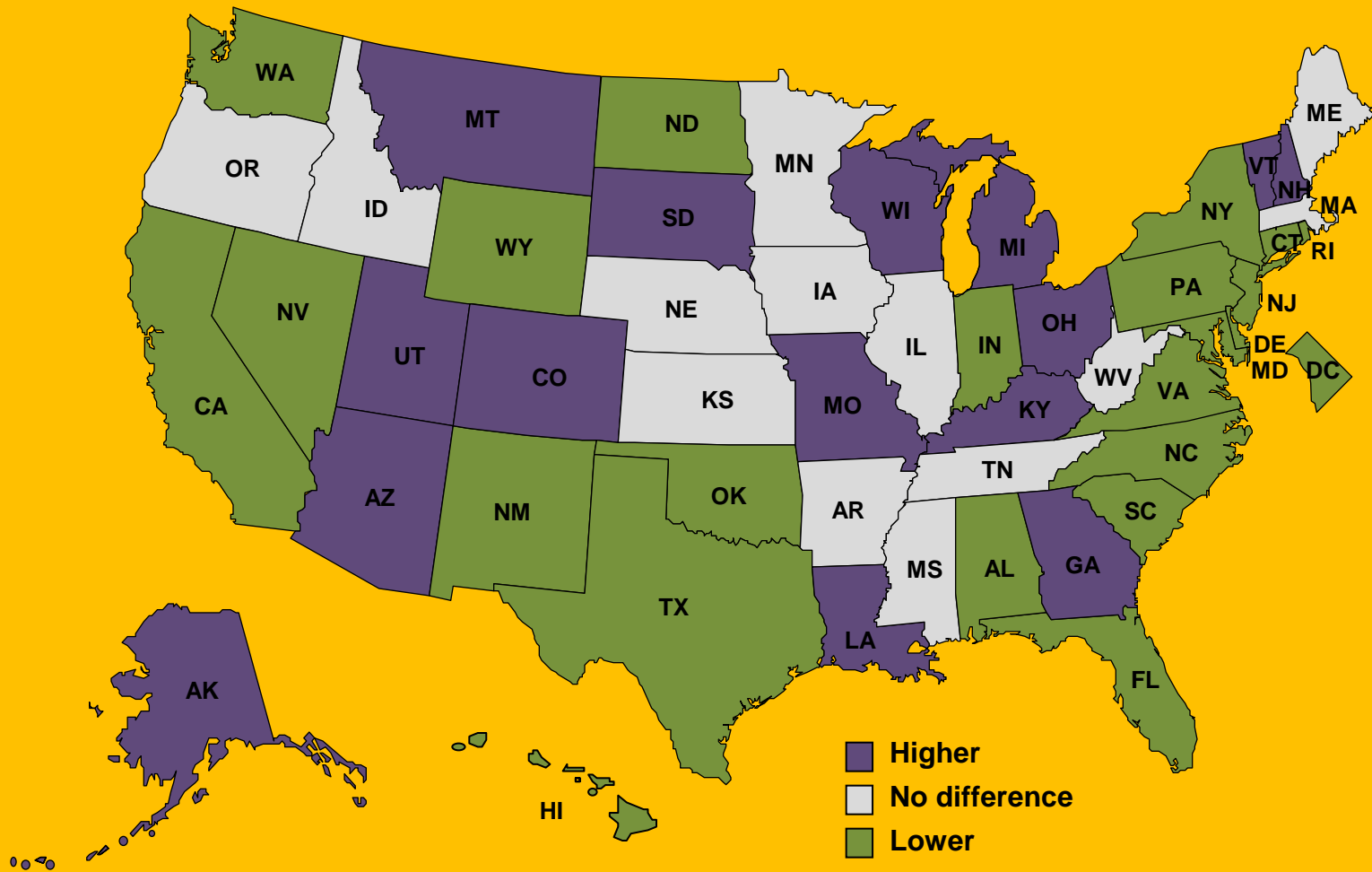
Martin JA, Hamilton BE, Ventura SJ, et.al. Births: Final data for 2009. National vital statistics reports; vol 60 no 1. Hyattsville, MD: National Center for Health Statistics. 2011.

General fertility rate for AIAN women based on the 2000 and 2010 censuses: United States, 2000-2009



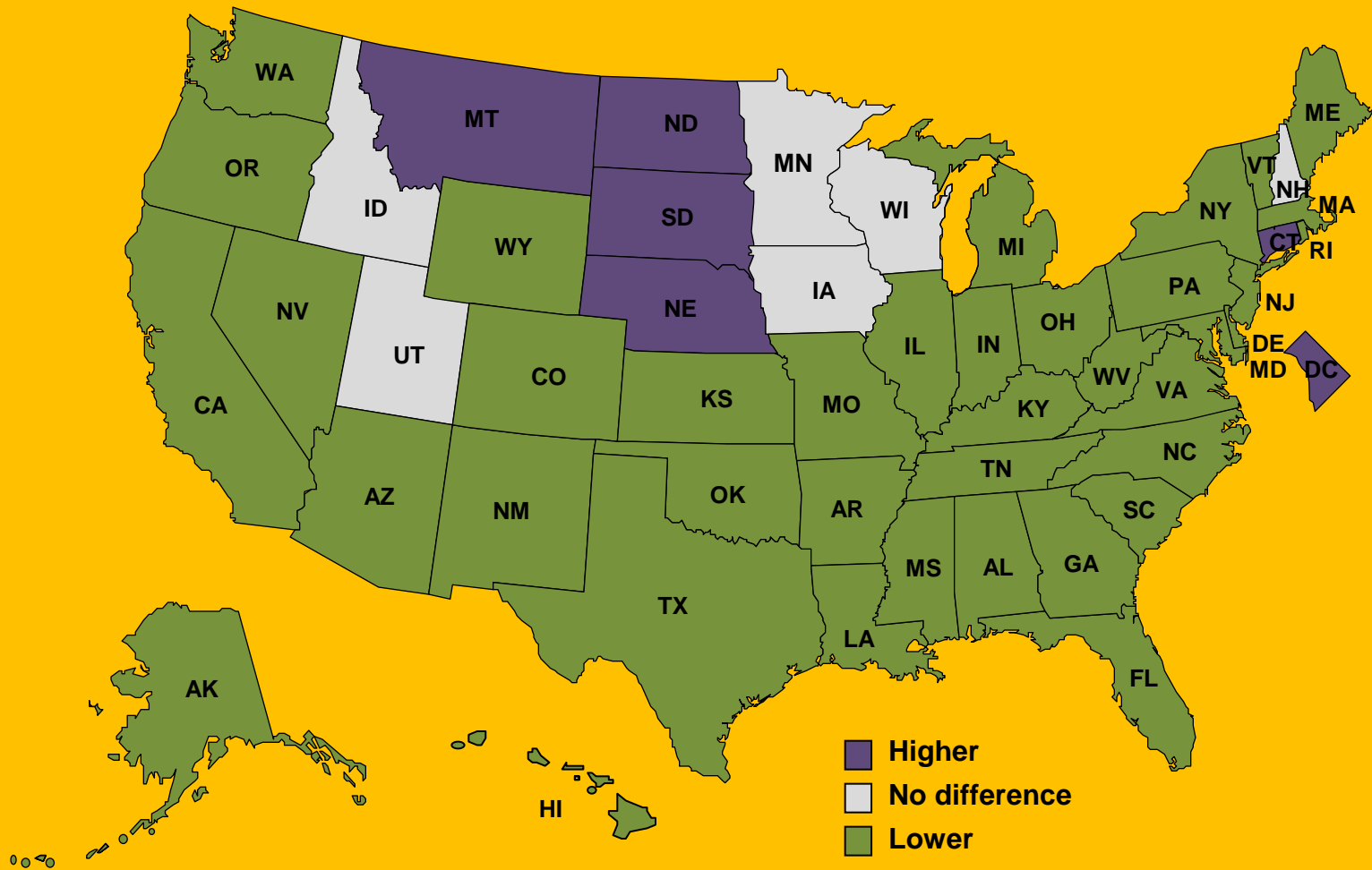
Sources: Hamilton BE, Martin JA, Ventura SJ. Births: Preliminary data for 2010. National vital statistics reports; vol 60 no 2. Hyattsville, MD: National Center for Health Statistics. 2011.
 Martin JA, Hamilton BE, Ventura SJ, et.al. Births: Final data for 2009. National vital statistics reports; vol 60 no 1. Hyattsville, MD: National Center for Health Statistics. 2011.

Fertility rate for women age 15-44 by state based on the 2000 and 2010 censuses: United States, 2009



Sources: CDC/NCHS, National Vital Statistics System. Martin JA, Hamilton BE, Ventura SJ, et.al. Births: Final data for 2009. National vital statistics reports; vol 60 no 1. Hyattsville, MD: National Center for Health Statistics. 2011.

Birth rate for women age 15-19 by state based on the 2000 and 2010 censuses: United States, 2009



Sources: CDC/NCHS, National Vital Statistics System. Martin JA, Hamilton BE, Ventura SJ, et.al. Births: Final data for 2009. National vital statistics reports; vol 60 no 1. Hyattsville, MD: National Center for Health Statistics. 2011.

Summary:

Differences between birth and fertility rates based on the 2000 and 2010 censuses vary by age, race, Hispanic origin, and area population group.

The disparity in revised (2010-based) birth and fertility rates among population groups is generally smaller than the unrevised (2000-based) rates.

Website address:

**[http://www.cdc.gov/nchs/about/
major/dvs/popbridge/popbridge.
htm](http://www.cdc.gov/nchs/about/major/dvs/popbridge/popbridge.htm)**