



Instituto Brasileiro de Geografia e Estatística

People with disabilities: a comparison between the results for the 2000 and 2010 Population Censuses

**Andréa Borges Paim, IBGE/Brazil
15th Meeting of the Washington Group on Disability Statistics
October 27th – 29th, 2015**

Disability questions in 2000 and 2010 Censuses

Disability prevalence, 2000 and 2010 Censuses

Eight-digit code analysis

Age and sex composition

Disability by geographical areas

■ Seeing

2000

How do you evaluate your ability to see?

(If you wear glasses or contact lens, please make your evaluation while using it)

- 1 – Unable
- 2 – A lot of permanent difficulty
- 3 – Some permanent difficulty
- 4 – No difficulty

2010

Do you have permanent difficulty to see? (If you wear glasses or contact lens, please make your evaluation while using it)

- 1 – Yes, cannot do at all
- 2 – Yes, a lot of difficulty
- 3 – Yes, some difficulty
- 4 – No, no difficulty

■ Hearing

2000

How do you evaluate your ability to hear?

(If you use hearing aid, please make your evaluation while using it)

1 – Unable

2 – A lot of permanent difficulty

3 – Some permanent difficulty

4 – No difficulty

2010:

Do you have permanent difficulty to hear? (If you use hearing aid, please make your evaluation while using it)

1 – Yes, cannot do at all

2 – Yes, a lot of difficulty

3 – Yes, some difficulty

4 – No, no difficulty

■ Mobility

2000

How do you evaluate your ability to walk/climbing stairs?

(If you use a can or walking aid, please make your evaluation while using it)

- 1 – Unable
- 2 – A lot of permanent difficulty
- 3 – Some permanent difficulty
- 4 – No difficulty

2010

Do you have permanent difficulty to walk or climbing steps? (If you use a can or walking aid, please make your evaluation while using it)

- 1 – Yes, cannot do at all
- 2 – Yes, a lot of difficulty
- 3 – Yes, some difficulty
- 4 – No, no difficulty

■ Mental

2000

Do you have any permanent mental disability that limits your habitual activities? (Such as working, attending school, playing, etc.)

1 – Yes

2 – No

2010

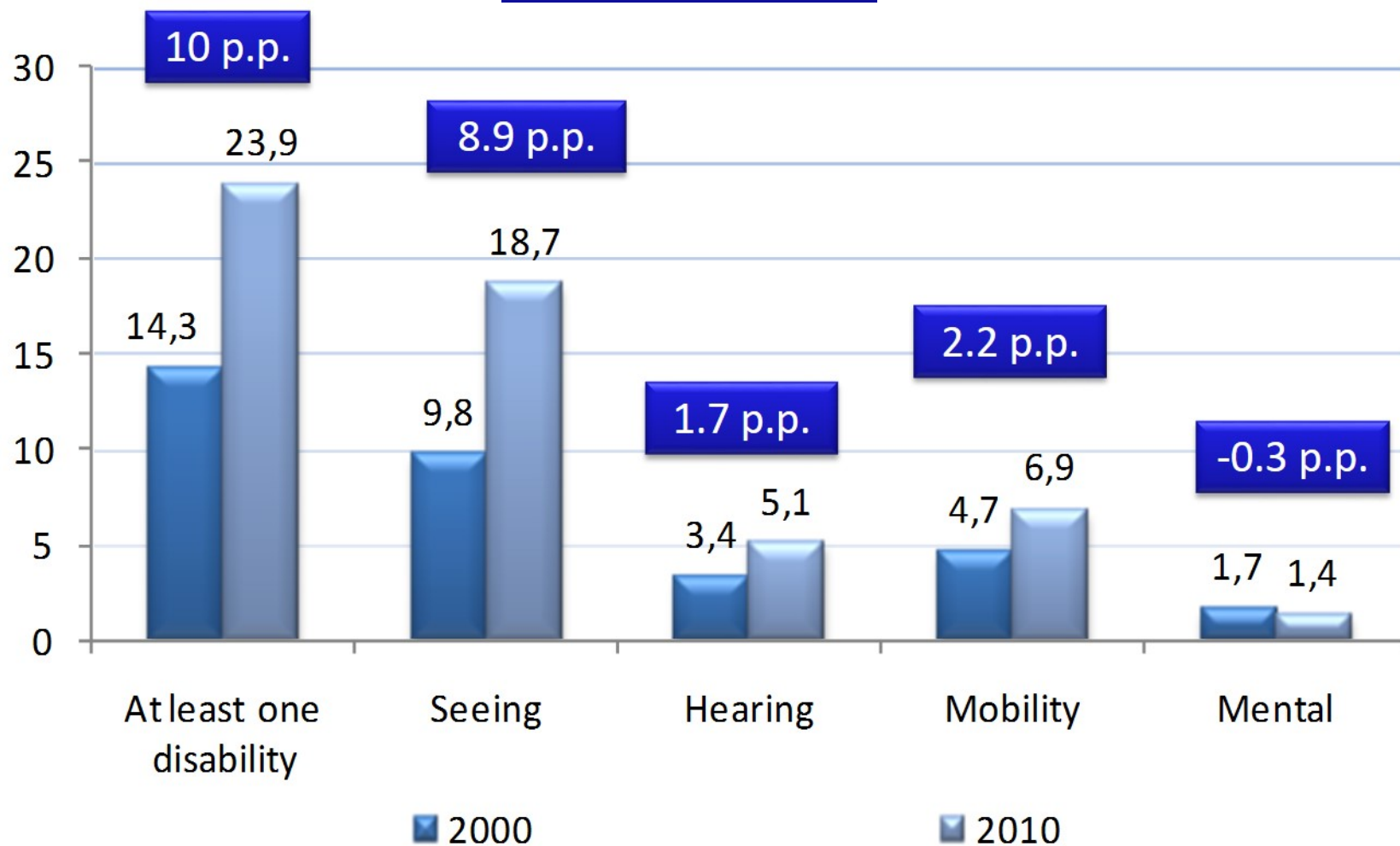
Do you have any permanent mental/intellectual disability that limits your habitual activities, such as working, attending school, playing, etc.?

1 – Yes

2 – No

Brazil

%2010 - %2000



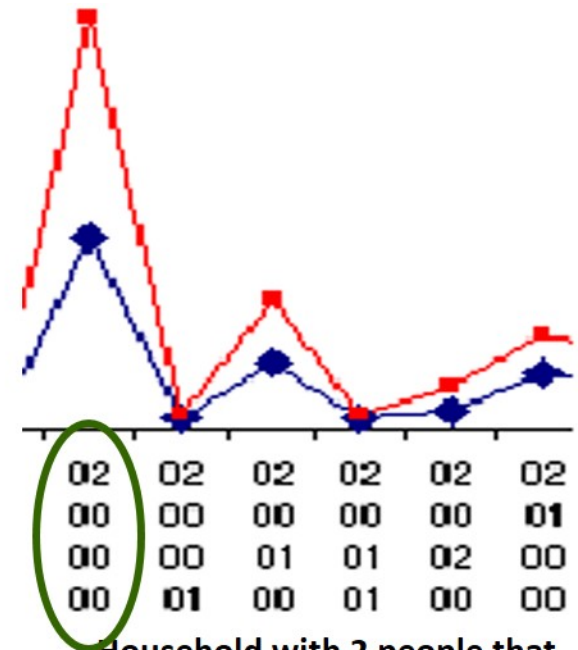
Brazil 2000/2010

Level of difficulty	Seeing		Hearing		Mobility	
	2000	2010	2000	2010	2000	2010
Yes, cannot do at all	0,1	0,3	0,1	0,2	0,3	0,4
Yes, a lot of difficulty	1,4	3,2	0,5	0,9	1,0	1,9
Yes, some difficulty	8,6	15,3	2,8	4,0	3,3	4,6
No, no difficulty	89,9	81,2	96,6	94,9	95,4	93,1

Households
Number of people
with disabilities



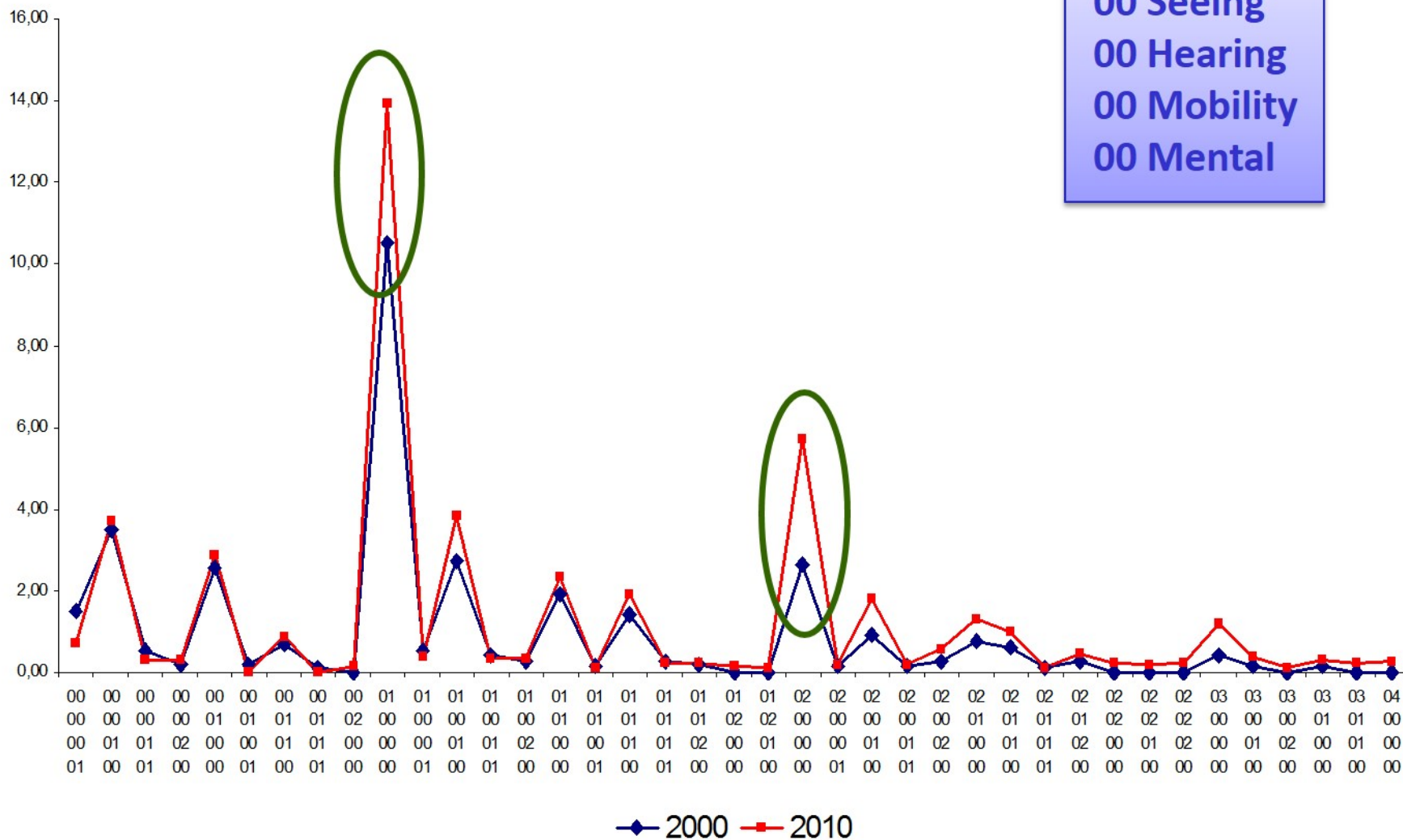
00 Seeing
00 Hearing
00 Mobility
00 Mental

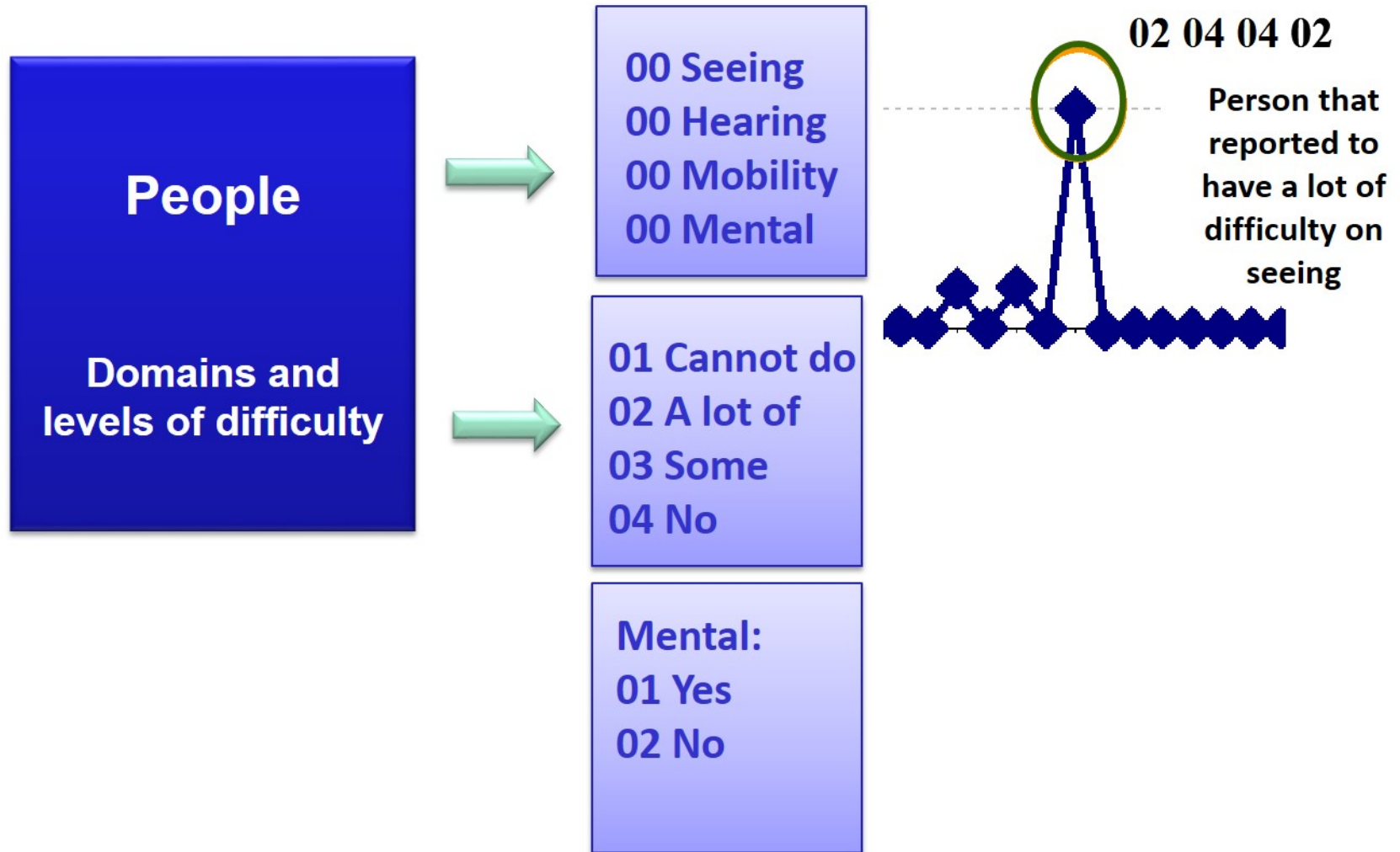


Household with 2 people that
reported to have difficulty in
seeing

Brazil %2010 - %2000

00 Seeing
00 Hearing
00 Mobility
00 Mental



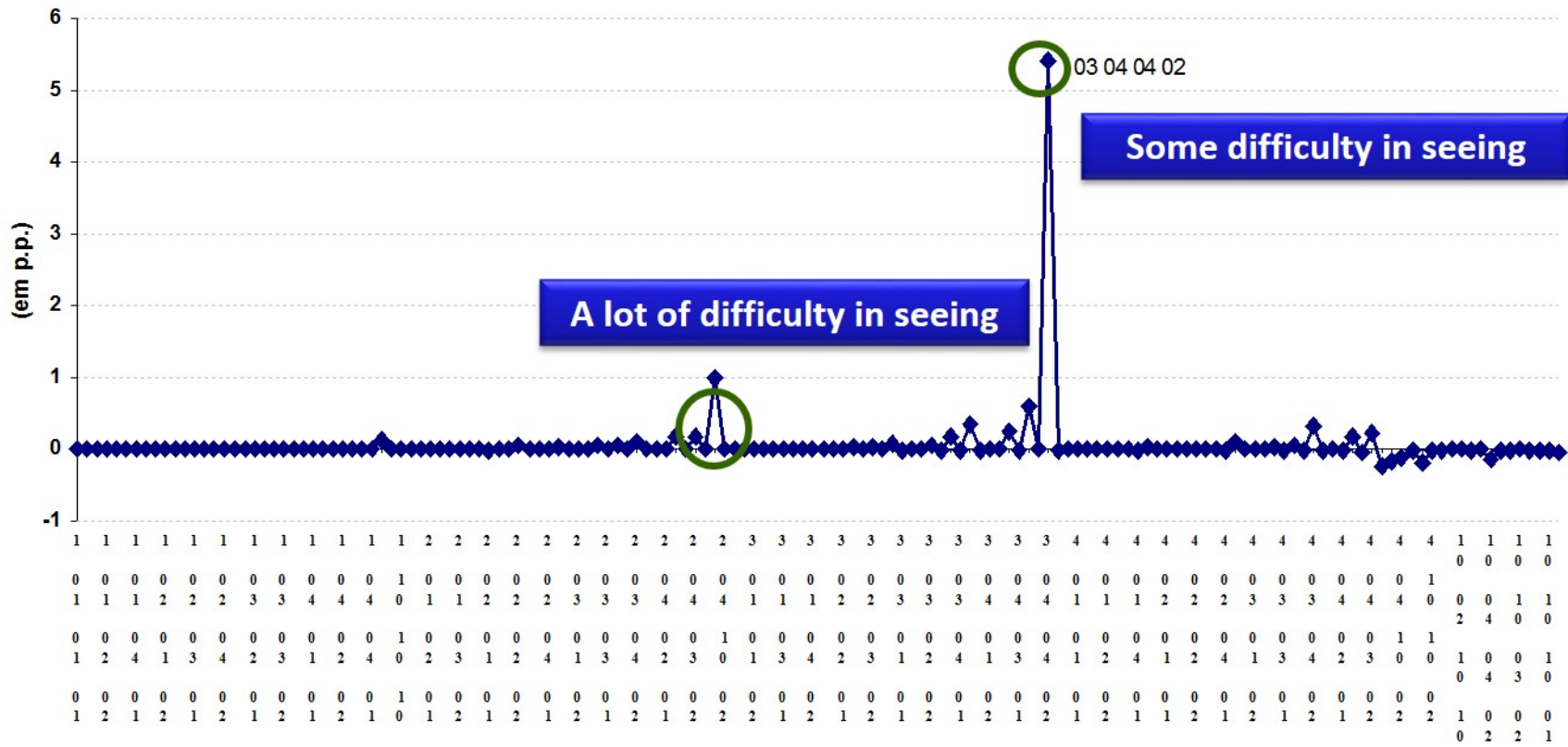


Eight-digit code analysis

Brazil
%2010 - %2000

00 Seeing
00 Hearing
00 Mobility
00 Mental

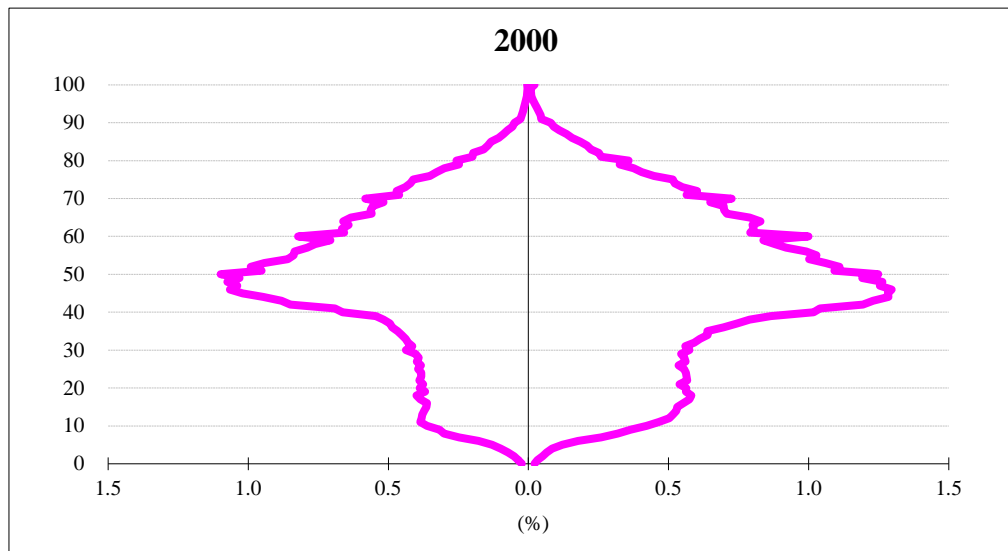
01 Cannot do
02 A lot of
03 Some
04 No



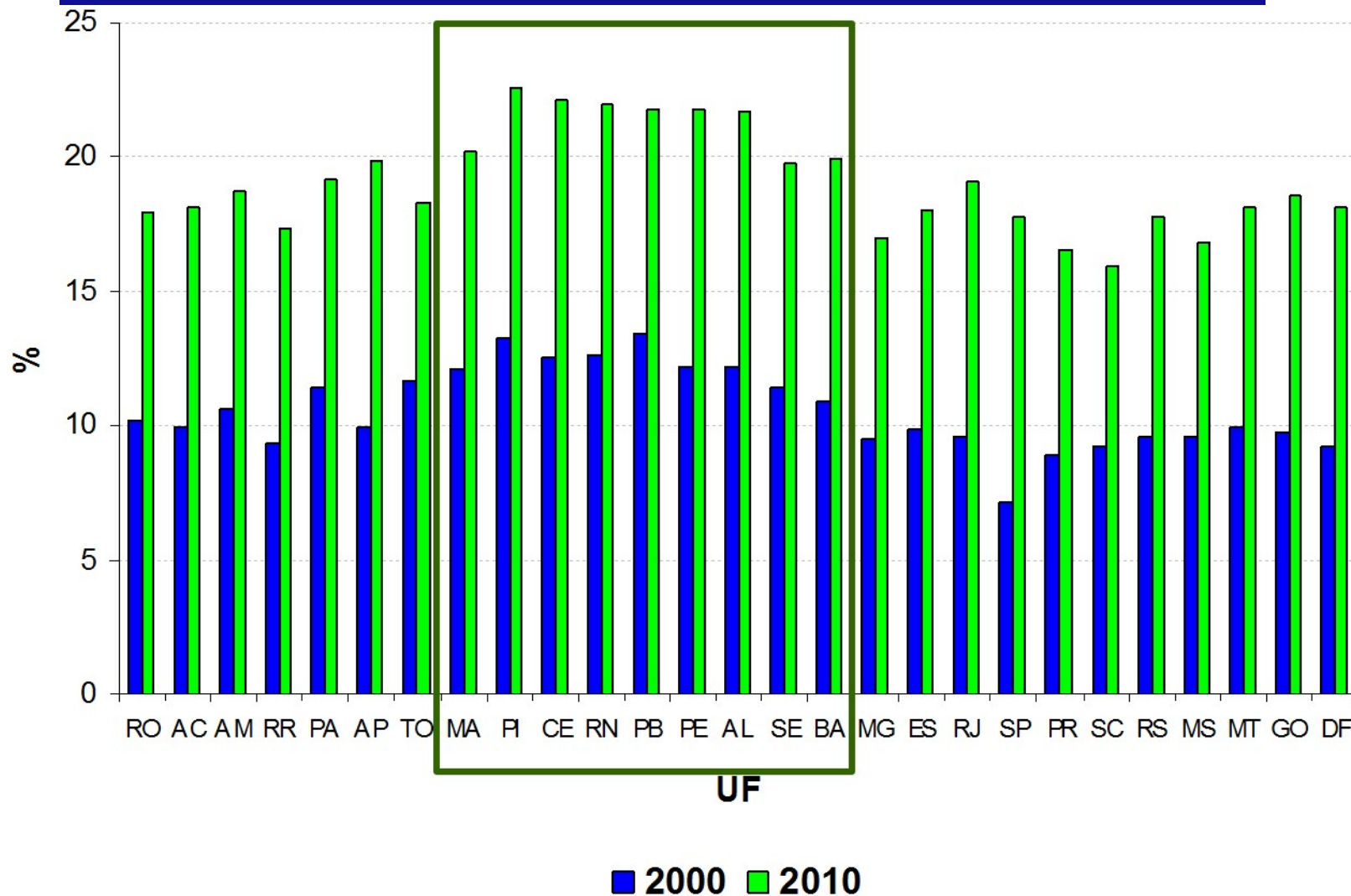
Some difficulty in seeing

A lot of difficulty in seeing

People that reported difficulty in seeing: Brazil, 2000-2010



People that reported to have difficulty to see. Brazilian Federation Units, 2000-2010



Thank you!

andrea.borges@ibge.gov.br

