

Multiple Births

United States - 1964

Presents statistics for sets of multiple births occurring in the United States in 1964. Discusses trends in the incidence of multiple births and variations in rates for twin and triplet births by age of mother, number of previous live births, and race. Presents estimated rates for fraternal and identical twins. For each State, shows numbers of multiple births by live-birth status, sex, plurality, and race.

PROPERTY OF THE
PUBLICATIONS BRANCH
EDITORIAL LIBRARY

DHEW Publication No. 76-1298

U.S. DEPARTMENT OF HEALTH, EDUCATION, AND WELFARE
Public Health Service

Health Resources Administration
National Center for Health Statistics

Rockville, Maryland



First issued in the Public Health Service Publication No. 1000 Series 21-No. 14
October 1967.
Reprinted as DHEW Publication No. (HRA) 76-1298

NATIONAL CENTER FOR HEALTH STATISTICS

THEODORE D. WOOLSEY, *Acting Director*

PHILIP S. LAWRENCE, Sc.D., *Associate Director*

OSWALD K. SAGEN, Ph.D., *Assistant Director for Health Statistics Development*

WAL T R. SIMMONS, M.A., *Acting Assistant Director for Research and Scientific Development*

ALICE M. WATERHOUSE, M.D., *Medical Consultant*

JAMES E. KELLY, D.D.S., *Dental Advisor*

LOUIS R. STOLCIS, M.A., *Executive Officer*

DONALD GREEN, *Information Officer*

DIVISION OF VITAL STATISTICS

ROBERT D. GROVE, Ph.D., *Director*

ANDERS S. LUNDE, Ph.D., *Assistant Director*

ROBERT A. ISRAEL, M.S., *Chief, Mortality Statistics Branch*

ARTHUR A. CAMPBELL, *Chief, Natality Statistics Branch*

CHARLES R. COUNCIL, *Chief, Registration Methods Branch*

PATIENCE LAURIAT, *Chief, Marriage and Divorce Statistics Branch*

ALICE M. HETZEL, *Chief, Statistical Resources Section*

CONTENTS

	Page
Introduction -----	1
Trends-----	2
Hellin-Zeleny Hypothesis -----	3
Twins, Monozygotic and Dizygotic-----	4
Twins by Age of Mother -----	6
Twins by Number of Previous Live Births-----	6
Twins by Age of Mother and Number of Previous Live Births-----	7
Twins by Geographic Areas-----	8
Triplets-----	10
Sex Ratios and Fetal Deaths -----	11
Summary-----	12
References -----	13
Detailed Tables -----	14
Appendix -----	49
Matching of Records-----	49
Base for Rates-----	49
General Notes-----	50

IN THIS REPORT statistics of multiple births occurring in the United States in 1964 are presented. The data are matched sets of multiple births from a complete count of the birth and fetal death records.

The rate of twinning of the 1920's and 1930's was higher than that of the 1940's and 1950's. In all categories of classification the frequency of multiple deliveries among Negroes is higher than among white women.

The rate of twinning varies independently with the age of mother and the number of previous live births she has had. By age, the rate rises to the 35-39 age group and then falls. The more live births a woman has had (the higher parity she is), the more likely she is to bear twins. The observed differences are due almost entirely to the dizygotic, or fraternal, twins. Monozygotic, or identical, twins occur with about the same frequency regardless of the age or parity of the mother.

The proportion of triplets among all deliveries is approximately the square of the proportion of twins among all deliveries, as predicted by the Hellin-Zeleny hypothesis. The triplet rates show the same relationships by age and parity as the twin rates.

SYMBOLS

Data not available-----	---
Category not applicable-----	...
Quantity zero-----	-
Quantity more than 0 but less than 0.05----	0.0
Figure does not meet standards of reliability or precision-----	*

MULTIPLE BIRTHS, 1964

Robert L. Heuser, *Division of Vital Statistics*

INTRODUCTION

This report is based on the live births and fetal deaths occurring in multiple deliveries in the United States in 1964. The birth certificates and fetal death certificates for individuals have been matched, and the characteristics for the resulting sets of multiple deliveries have been tabulated. The unmatched certificates, for which one or more certificates for other individuals in the set could not be found, have been excluded from the data presented in this report.

The data shown here differ from those published in the *Vital Statistics of the United States, 1964* in two ways. First, the latter figures are based on a 50-percent sample of the records, while the present report is based on a complete count. Second, the data on multiple births in the vital statistics volume are for live births occurring in multiple deliveries, rather than sets of multiple deliveries, including both live births and fetal deaths, as shown here.

The basic data are presented in tables 2-5. Most of the tables and figures shown in the text

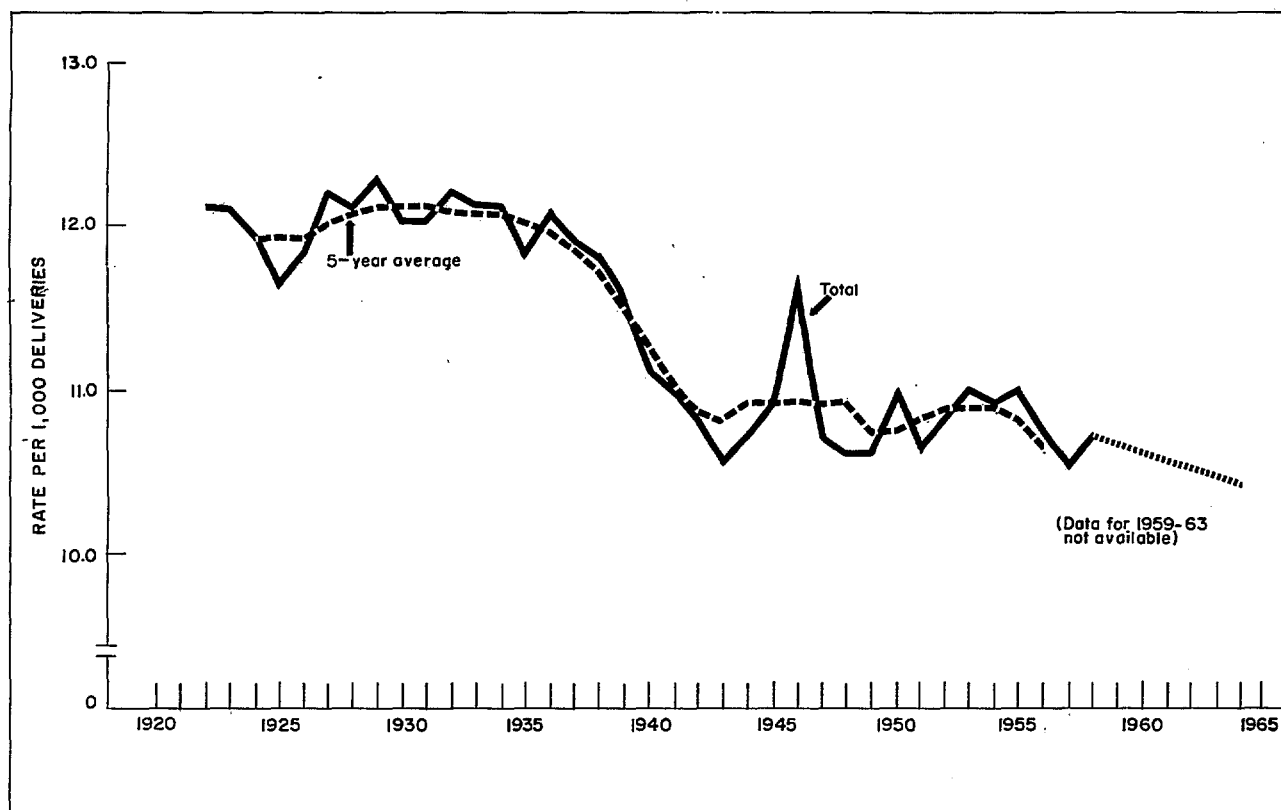


Figure 1. Twin rates per 1,000 deliveries, 1922-58 and 1964.

(tables B-G and figs. 3-7) are based on these tabulations.

The analytical rates have as their base estimates of numbers of deliveries, rather than the number of live births. The rates are actually proportions—the proportion of all deliveries in a specified category that is twin or triplet.

TRENDS

Over the decades there has been a decline in the frequency of multiple births in the United States. The twin rates (fig. 1) of the 1940's and

the 1950's are lower than those of the 1920's and the 1930's. The 1964 rate is lower than those of the 1950's.

Since there are differences in the occurrence of twins by age of mother and by race, changes in the age and racial composition of the population may contribute to some of this decline. However, Guttmacher compared the multiple birth rates and the percentage of the deliveries that were nonwhite for 1928-49 and found no strong correlation between the two.¹ If there were considerably more nonwhite births in years when the rate was high, it could be assumed that color

Table A. Unadjusted and age-adjusted twin rates per 1,000 deliveries, by race: United States, 1935-64

[Rates for 1951-54 and 1956-58 are based on a 50-percent sample. Alaska and Hawaii included in 1964]

Year	Unadjusted ¹				Age-adjusted ²			
	Total	White	Negro	Other	Total	White	Negro	Other
	Rate per 1,000 deliveries							
1964-----	10.1	9.5	13.7	10.4	10.2	9.7	13.5	10.1
1959-63-----	---	---	---	---	---	---	---	---
1958-----	10.5	10.0	14.2	8.8	10.5	10.0	13.8	8.8
1957-----	10.3	9.8	13.7	8.8	10.2	9.8	13.2	8.7
1956-----	10.5	10.0	13.8	8.7	10.4	10.0	13.2	8.6
1955-----	10.8	10.3	13.8	8.5	10.6	10.3	13.2	8.6
1954-----	10.6	10.1	13.9	7.6	10.5	10.1	13.4	7.4
1953-----	10.8	10.2	14.2	9.0	10.6	10.2	13.7	8.9
1952-----	10.5	10.1	13.5	7.8	10.4	10.1	13.1	7.8
1951-----	10.3	9.9	12.9	8.5	10.2	10.0	12.5	8.3
1950-----	10.7	10.3	13.4	10.3	10.6	10.3	13.1	10.3
1949-----	10.4	10.0	12.8	8.7	10.3	10.0	12.6	8.8
1948-----	10.4	10.1		12.1	10.4	10.2		12.0
1947-----	10.5	10.2		12.7	10.5	10.2		12.5
1946-----	11.3	11.0	13.5	10.8	11.1	10.9	13.1	10.7
1945-----	10.6	10.3	12.4	10.7	10.2	10.0	12.0	10.6
1944-----	10.3	10.1	12.5	8.4	10.1	9.9	12.2	8.4
1943-----	10.1	9.9	12.0	11.3	10.1	9.9	12.0	11.3
1942-----	10.5	10.2	12.8	8.4	10.6	10.3	12.8	8.3
1941-----	10.6	10.3	12.8	9.7	10.7	10.4	12.8	9.6
1940-----	10.7	10.4	12.8	10.9	10.7	10.4	12.8	10.9
1939-----	11.1	10.8	13.6	9.4	11.1	10.8	13.6	9.5
1938-----	11.3	11.0	13.9	11.9	11.4	11.0	13.8	11.8
1937-----	11.4	11.0	14.6	9.7	11.4	11.0	14.5	9.6
1936-----	11.6	11.2	14.2	10.5	11.5	11.2	14.0	10.3
1935-----	11.3	11.0	13.8	10.5	11.2	10.9	13.5	10.2

¹Rates are cases of twins with 1 or 2 live births per 1,000 deliveries. These unadjusted rates are not those used in figure 1; figure 1 rates include cases with 2 fetal deaths.

²Age-adjusted by the direct method using the 1940 distribution of deliveries by age as the standard.

was an important factor in the variation. A comparison of the ages of the mothers, by color, in 1940 and 1949, with the multiple pregnancy rates suggests that "shifts in age are a partial, but unimportant, factor in fluctuations of incidence in the annual multiple birth frequency, as well as its current decline."²

Age-adjusted twin rates, by race, show a substantial drop from 1935 to about 1945. Then the Negro rates rise again, but the white rates continue to decline slightly. This may be seen in table A and figure 2.

Birth order also has been found to be related to the multiple birth rate.^{3,4} Trends in the proportions of births that were of higher order were compared with the age-adjusted twin rates for the white and Negro births separately. This comparison suggests that some, but not all, of the change in the twin rate was due to a changing distribution of births by order.

These three factors account for some of the fluctuation observed in the incidence of multiple births. The remainder of the variation has not been explained by specific factors.

HELLIN-ZELENY HYPOTHESIS

The Hellin-Zeleny hypothesis for the frequency of multiple deliveries states that if twins occur once in n deliveries, then triplets will occur once in n^2 deliveries, and quadruplets, once in n^3 deliveries.⁵

The observed ratio of twin to total deliveries for all races in 1964 was 1/96. From this, the expected frequency of triplets is 1/9216. The actual frequency of 1/9977 was slightly lower (by about 8 percent) than the expected frequency. The actual frequency of quadruplets, 1/663,470, was 33 percent greater than the hypothesized 1/884,736.

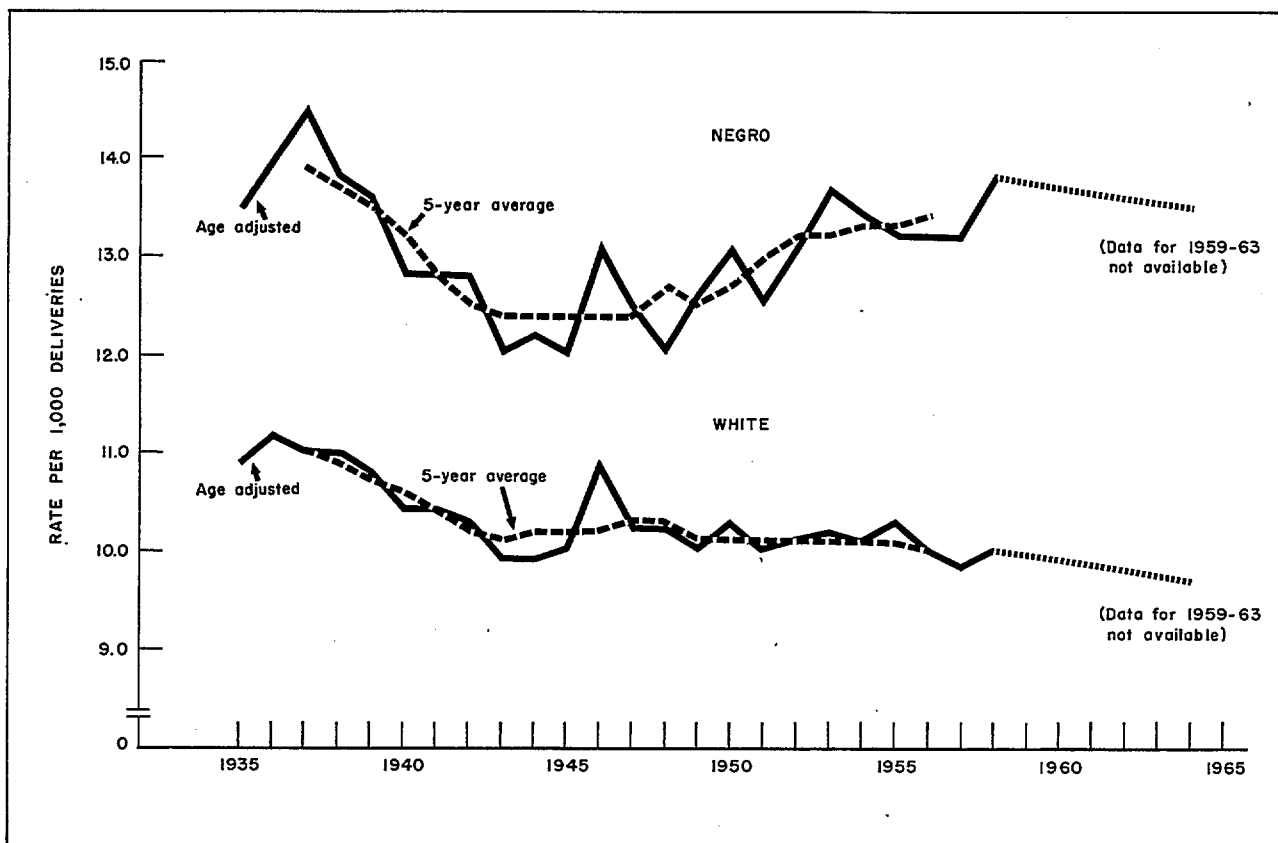


Figure 2. Age-adjusted twin rates per 1,000 deliveries, by race, 1935-64.

Comparing the actual with the predicted frequencies by color shows the white triplet and quadruplet frequencies to be quite well predicted. The frequency for triplets is 7 percent lower than predicted and that for quadruplets is only 2 percent lower than predicted. The nonwhite frequencies do not agree very closely with the hypothesized values, being 15 percent lower for triplets and 73 percent higher for quadruplets.

The Hellin-Zeleny hypothesis is considered to be an approximation rather than a mathematical law. It is a rule-of-thumb for an order-of-magnitude frequency of higher multiple deliveries.

TWINS, MONOZYGOTIC AND DIZYGOTIC

To say that twins of all races occur at a rate of 10.4 per 1,000 deliveries and that twins occur less frequently in white than in Negro deliveries is to tell only part of the story. There are differentials in the rate of twinning by the age of the mother and by the number of births she has had before the multiple delivery. There are also differences between the rate of monozygotic (MZ), or identical twins, and dizygotic (DZ), or fraternal twins.

The Weinberg differential method, based on the sex composition of the twin sets, is used to estimate the numbers of MZ and DZ sets.^{6,7} All unlike-sexed sets are dizygotic. It is assumed that a DZ set may be either like- or unlike-sexed with equal probability. Thus, the number of DZ sets is twice the number of unlike-sexed sets; the remaining sets are MZ.

The relative proportions of MZ and DZ twins are not the same for all races. Among white twins, 60 percent are estimated to be DZ, while among Negro twins the proportion is about 70 percent. These proportions result from unlike-sexed twins being about half as common as like-sexed twins. Komai and Fukuoka found that among the Japanese and other oriental peoples, unlike-sexed twins were only one-quarter as common as like-sexed twins, which implies about 40 percent DZ.⁸ This is considerably lower than either the white or Negro frequency. In the United States in 1964, the proportion of DZ among the "other nonwhite" twins was about 50 percent. About half of the "other nonwhite" live births are Indian and a quarter Japanese and Chinese. The lower percent

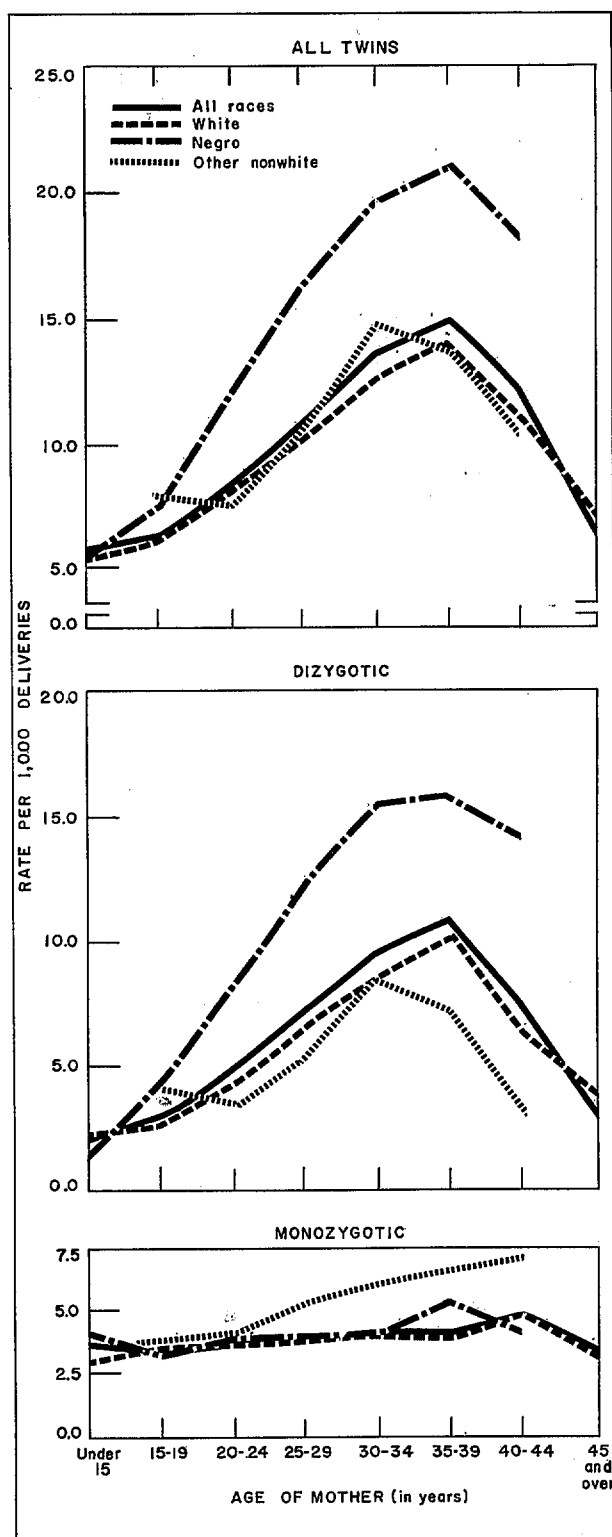


Figure 3. Twin rates per 1,000 deliveries, by age of mother, race, and type of twin.

DZ reflects the effect of the oriental deliveries. This would also suggest that the Indian twins have a substantially higher proportion DZ than do the orientals.

In estimating the rates of MZ and DZ twinning by age of mother, number of previous live births, and geographic division, only the cases of twins with one or two live births are used; cases with two fetal deaths are excluded. This latter category presents some special problems. There is "substantial evidence that not all fetal deaths for which registration is required are reported."⁹ This

problem becomes more severe as the gestation period nears the lower limit that is required for registration in most States (20 weeks). Cases with two fetal deaths are more likely to have a shorter gestation period than cases involving a live birth. If one mate in the set is born alive and has a live-birth certificate, then its fetal-death mate is more likely to be registered than if both mates were fetal deaths.¹⁰ In some cases, the sex of an individual was unknown; these were all assumed to be fetal deaths. Of the reported sets with two fetal deaths, over 7 percent are of unknown sex com-

Table B. Twin rates per 1,000 deliveries, by age of mother, race, and type of twin: United States, 1964

[Based on a 100-percent count of registered births in twin deliveries and a 50-percent sample of all registered live births, which were used to estimate the total number of deliveries. Twin deliveries include only those in which there were one or two live births]

Race	Age of mother								
	All ages ¹	Under 15 years	15-19 years	20-24 years	25-29 years	30-34 years	35-39 years	40-44 years	45 + years
Rate per 1,000 deliveries									
<u>All races</u>									
Total-----	10.1	5.8	6.3	8.5	10.9	13.7	15.0	12.2	6.3
Monozygotic-----	3.8	3.7	3.4	3.6	3.8	4.2	4.2	4.8	3.3
Dizygotic-----	6.3	2.1	2.9	4.9	7.1	9.5	10.8	7.4	3.0
<u>White</u>									
Total-----	9.5	5.3	6.0	7.9	10.1	12.7	14.0	11.1	7.0
Monozygotic-----	3.8	3.0	3.5	3.6	3.7	4.1	3.9	4.8	3.2
Dizygotic-----	5.7	2.3	2.5	4.3	6.4	8.6	10.1	6.3	3.8
<u>Negro</u>									
Total-----	13.7	5.6	7.5	12.3	16.3	19.6	20.9	18.2	*
Monozygotic-----	3.9	4.0	3.2	4.0	4.0	4.2	5.3	4.1	*
Dizygotic-----	9.8	1.6	4.3	8.3	12.3	15.4	15.6	14.1	*
<u>Other</u>									
Total-----	10.4	*	7.8	7.5	10.6	14.7	13.9	10.4	*
Monozygotic-----	5.1	*	3.8	4.2	5.3	6.2	6.7	7.2	*
Dizygotic-----	5.3	*	4.0	3.3	5.3	8.5	7.2	3.2	*

¹Includes 7 cases of age not stated: 2 white and 5 Negro.

position. For sets with one born alive the corresponding figure is only about 4 percent. With unknown sex composition, the zygosity of this group cannot be estimated. For these reasons, the cases with two fetal deaths were not included in the rates by zygosity.

Twins by Age of Mother

The twinning rate by age of mother increases up to the 35-39 age group, and then decreases for ages 40 years and over. The MZ rate is nearly constant for all age groups. Thus, the DZ rate accounts for the rise and fall in the total rate by age. These rates are shown in table B.

The Negro-white differences may be easily seen in figure 3. The total Negro rate is higher than the white rate for all age groups. However, the differences are due to the DZ rates, as the MZ rates for both races are about the same.

The rate for "other nonwhite" twins also rises and then falls with increasing age, but the peak comes at ages 30-34 rather than at ages 35-39. The MZ rate is not constant, but increases slightly with age. Most of the variation in the total rate is due to the DZ rate, as is true for the other races.

Twins by Number of Previous Live Births

The more live births a woman has had, the more likely she is to bear twins (table C and fig. 4). This relationship holds for both Negro and white births, with the Negro rate being greater than the white for all parities (number of previous live births). As was true for age differences, the differences by parity are due to the DZ rate, with the MZ rate being constant.

The twinning rate for "other nonwhite" moves irregularly upward as parity increases. Although there is considerable variation in both the MZ and DZ rates, the MZ is the more erratic. There is a smooth rise in the DZ rate from parities one to four, a decrease to six, and then a rise to seven and above. The MZ rate alternately rises and falls with increasing parity. It is this up-and-down pattern that gives the upward trend of this total rate its slightly irregular character.

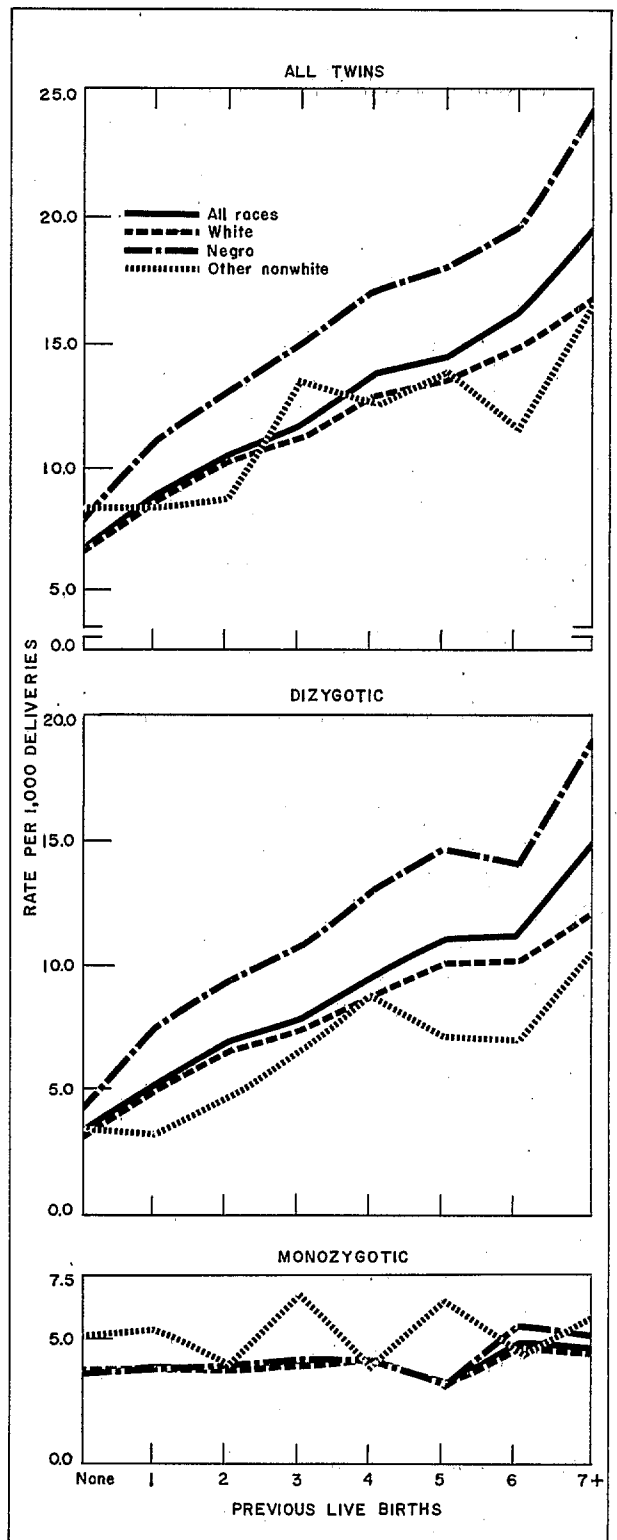


Figure 4. Twin rates per 1,000 deliveries, by number of previous live births, race, and type of twin.

Table C. Twin rates per 1,000 deliveries, by number of previous live births, race, and type of twin: United States, 1964

[Based on a 100-percent count of registered births in twin deliveries and a 50-percent sample of all registered live births, which were used to estimate the total number of deliveries. Twin deliveries include only those in which there were one or two live births]

Race	Previous live births									
	Total ¹	None	1	2	3	4	5	6	7+	
Rate per 1,000 deliveries										
<u>All races</u>										
Total-----	10.1	6.8	8.9	10.5	11.8	13.6	14.4	16.1	19.5	
Monozygotic-----	3.8	3.5	3.7	3.7	4.0	4.1	3.3	4.8	4.7	
Dizygotic-----	6.3	3.3	5.2	6.8	7.8	9.5	11.1	11.3	14.8	
<u>White</u>										
Total-----	9.5	6.7	8.6	10.2	11.2	12.8	13.4	14.8	16.5	
Monozygotic-----	3.8	3.6	3.7	3.7	3.8	4.1	3.3	4.6	4.3	
Dizygotic-----	5.7	3.1	4.9	6.5	7.4	8.7	10.1	10.2	12.2	
<u>Negro</u>										
Total-----	13.7	7.8	11.1	13.2	15.0	17.2	17.9	19.5	24.1	
Monozygotic-----	3.9	3.5	3.6	3.8	4.2	4.1	3.3	5.3	5.2	
Dizygotic-----	9.8	4.3	7.5	9.4	10.8	13.1	14.6	14.2	18.9	
<u>Other</u>										
Total-----	10.4	8.4	8.4	8.6	13.4	12.6	13.7	11.5	16.4	
Monozygotic-----	5.1	5.1	5.3	3.9	6.8	3.9	6.5	4.5	5.8	
Dizygotic-----	5.3	3.3	3.1	4.7	6.6	8.7	7.2	7.0	10.6	

¹ Includes 234 cases of number of previous live births not stated: 219 white, 13 Negro, and 2 other.

Twins by Age of Mother and Number of Previous Live Births

The cases of twins in which *both* mates were born alive have been tabulated by age of mother, parity, race, and the sex composition of the set. These represent about 96 percent of the twin sets in the tabulations discussed in the preceding sections. (The remaining sets include one live birth and one fetal death.) With this tabulation it is possible to examine more closely the age, parity, and color differentials in the rate of twinning. These rates are shown in table 1.

It has been shown before that the twinning rate by age of mother increases to age 35-39 and then decreases. When the number of previous live births is controlled, the same relationship is seen with only a few exceptions. The six and seven plus parity groups show a peak at ages 30-34 rather than at ages 35-39 years. The first age group that is shown for parities four, six, and seven plus (i.e., the first age group in which there are 10 or more cases of twins) shows an extremely high rate. After this first age group, however, the familiar pattern of increase followed by decrease prevails.

The white rates are nearly perfect in their adherence to the expected age pattern within parity groups. (The only exceptions are seen in the age differences for the six-parity group.) The Negro rates, on the other hand, are very irregular. The general age pattern of increase followed by decrease can be seen, but it is not smooth and there are many exceptions. Although there are fewer than 10 cases in four of the parity groups at ages 40-44, the rates computed for these categories exhibit the expected decline from ages 35-39. The high initial rates for parities four, six, and seven plus that were seen for all races are due to the high Negro rates for these parities. The Negro rates are higher than the white rates and, in the lower orders, increase more rapidly with age than do the white rates.

The increase in the twin rate with rising parity is seen for each age group as well as for all ages combined. The rates at ages 40-44 increase with parity, but irregularly. This same relation is seen for both the white and Negro groups, with only a few exceptions. For all age groups, the increase for the Negro twinning rate with parity is greater than that for the white race.

The twinning rate is related to age and parity independently. For each variable, holding the other constant, the observed differences are due to variations in rates for DZ twins. The MZ rates vary irregularly and by small amounts.

There are Negro-white differences in the rate of twinning regardless of age and parity. There are 40 age-by-parity cells in which there are at least 10 Negro cases and at least 10 white cases of twins. In 39 of these cells, the Negro rate is higher than the white. Comparison of the MZ and DZ cases separately shows that the Negro DZ rate is higher in 90 percent of the cells (36) while the Negro MZ rates are higher in only 55 percent of the cells (22). These consistent differences by age and number of previous live births suggest a greater tendency for the release of two ova in Negro than in white women.

Twins by Geographic Areas

In order to provide summary figures for areas intermediate between the States and the United States, contiguous States have been grouped into nine geographic divisions and the divisions grouped into four regions.

Table D. Twin rates per 1,000 deliveries, by geographic region, division, and race: United States, 1964

[Based on a 100-percent count of registered births in twin deliveries and a 50-percent sample of all registered live births, which were used to estimate the total number of deliveries. Twin deliveries include only those in which there were one or two live births]

Region and division	Total	White	Negro	Other
<u>Region</u>				
Rate per 1,000 deliveries				
Northeast-----	10.5	10.1	13.4	19.7
North Central-----	10.3	9.8	14.7	14.5
South-----	10.1	8.8	13.7	12.5
West-----	9.4	9.2	12.8	8.9
<u>Division</u>				
New England-----	10.2	10.0	13.8	33.2
Middle Atlantic-----	10.6	10.1	13.3	17.5
East North Central-----	10.4	9.9	14.7	14.5
West North Central-----	9.9	9.5	14.7	14.6
South Atlantic-----	10.1	8.8	13.1	16.0
East South Central-----	10.3	8.7	14.2	18.3
West South Central-----	10.0	8.8	14.5	9.5
Mountain-----	8.6	8.6	9.4	8.7
Pacific-----	9.7	9.4	13.3	8.9

The twinning rate varies slightly from one region to another (table D). The region with the highest rate, 10.5, is the Northeast; the lowest rate, 9.4, is in the West.

In all geographic divisions the Negro rate was higher than the white rate. However, the two races

did not have their highest rates in the same region. White twins occurred most frequently in the Northeast, while the Negro twins were most frequent in the North Central Region. For both races, the lowest rate was in the Mountain Division (in the West Region).

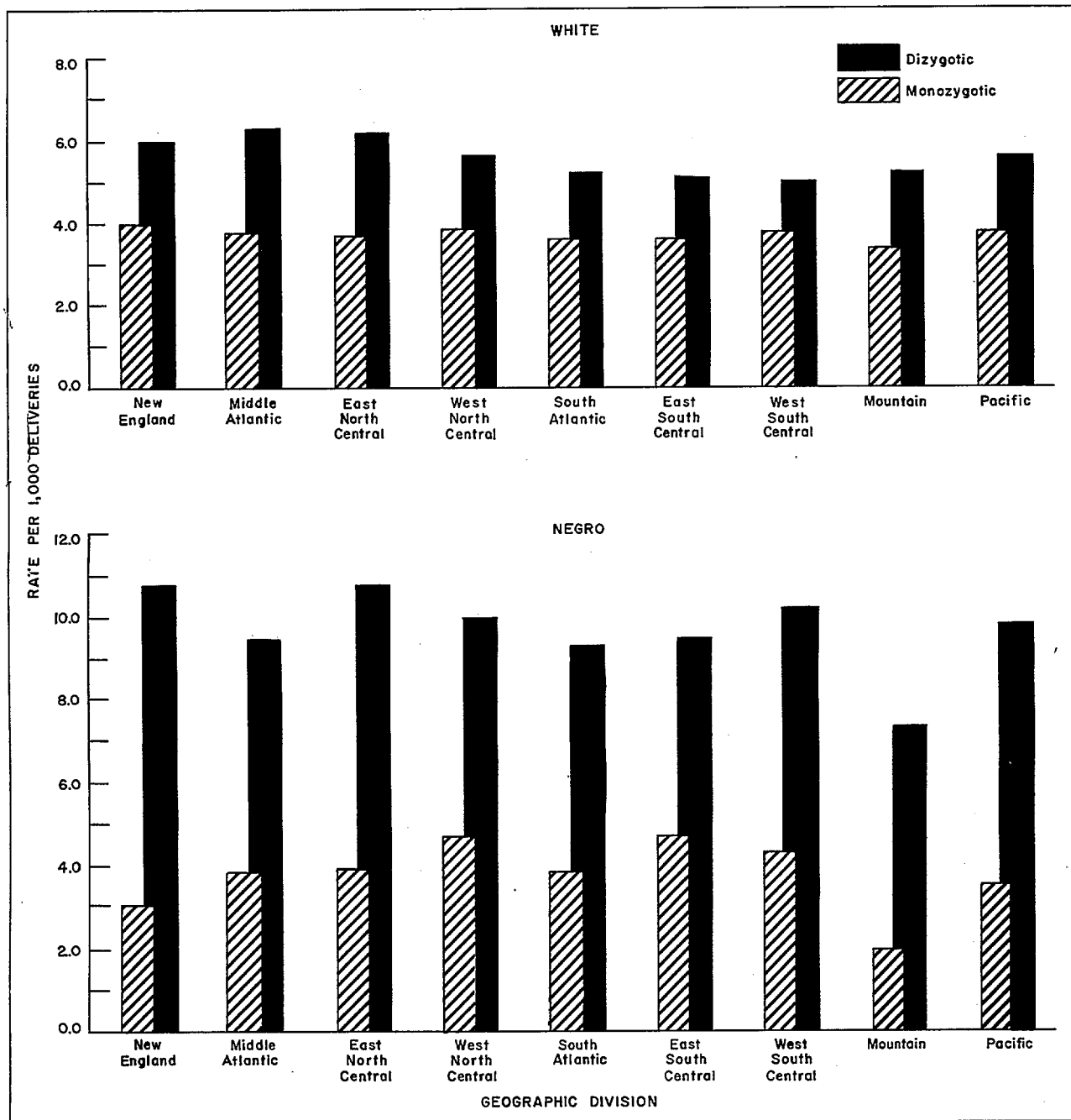


Figure 5. White and Negro twin rates per 1,000 deliveries, by geographic division and type of twin.

Figure 5 shows the white and Negro MZ and DZ rates for the geographic divisions. The Negro-white differences are due mainly to the DZ twins, with the MZ twins occurring with about the same frequency in both races.

TRIPLETS

Triplets occurred with a frequency of 10.0 cases per 100,000 deliveries, about 1/100 as frequently as twins. The direction of racial differences in the incidence of triplets is the same as for twins; the Negro rate (15.9) is higher than the white rate (8.8).

Since there are so few "other nonwhite" cases of triplets, they have been combined with the Negro cases before calculation of triplet rates by age of mother and by number of previous live births. The nonwhite rates are determined primarily by the Negro triplets.

The triplet rate by age of mother shows the same pattern as the twin rate (table E and fig. 6), increasing to the 35-39 age group, then decreasing to age 40 and over. The nonwhite rate is greater than the white rate for all age groups except one (15-19 years) where they are equal.

Table E. Triplet rate per 100,000 deliveries, by age of mother and color: United States, 1964

[Based on a 100-percent count of registered births in triplet deliveries and a 50-percent sample of all registered live births, which were used to estimate the total number of deliveries. Triplet deliveries include only those in which there were one or more live births]

Age	Total	White	Non-white
	Rate per 100,000 deliveries		
All ages-----	9.8	8.6	16.2
15-19 years-----	5.0	5.0	5.0
20-24 years-----	6.2	4.9	14.2
25-29 years-----	11.2	9.7	20.0
30-34 years-----	14.2	12.7	22.6
35-39 years-----	21.0	18.3	35.3
40 years and over--	16.5	15.8	20.1

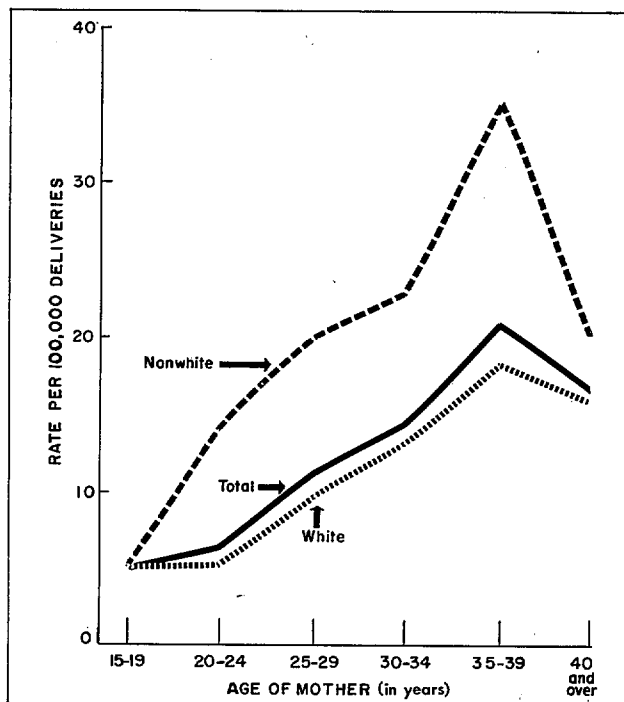


Figure 6. Triplet rates per 100,000 deliveries, by age of mother and color.

Table F. Triplet rate per 100,000 deliveries, by number of previous live births and color: United States, 1964

[Based on a 100-percent count of registered births in triplet deliveries and a 50-percent sample of all registered live births, which were used to estimate the total number of deliveries. Triplet deliveries include only those in which there were one or more live births]

Previous live births	Total	White	Non-white
	Rate per 100,000 deliveries		
Total-----	19.8	18.6	16.2
None-----	5.0	4.4	8.7
1-----	7.1	6.5	11.1
2-----	9.8	9.4	12.4
3-----	11.9	11.6	13.7
4-----	16.0	13.7	25.4
5-----	17.2	14.9	24.1
6-----	25.8	19.5	39.8
7+-----	26.6	24.7	29.3

¹Includes 1 case of previous live birth not stated.

The two color groups show two patterns of triplet rates by parity (table F and fig. 7). The white rates increase steadily with increasing parity. The nonwhite rates generally increase to the six-parity group, but then decline sharply.

SEX RATIOS AND FETAL DEATHS

The sex ratios, males per 100 females, of the white and nonwhite births do not have the same relationship to plurality (table G).

The sex ratio of all deliveries (live births and fetal deaths) is inversely related to the plurality of the delivery. That is, the sex ratio for single deliveries is higher than that for twin deliveries, and the sex ratio for twins is higher than that for triplets. Assuming that the sex ratio at conception is the same, regardless of plurality, the male's chance of surviving to term decreases more rapidly than the female's as plurality rises.

The sex ratios of fetal deaths are higher than those for live births. This, in combination with the fact that early fetal deaths have a higher sex ratio than late fetal deaths, implies that the sex ratio of conceptions is higher than either the sex ratio of live births or of fetal deaths. The prenatal environment in multiple pregnancies is presumably less favorable than in single pregnancies, thus leading to more fetal deaths.^a With a higher fetal death rate, more males are lost, and the sex ratio at birth is therefore lower for multiple deliveries.

^aWhite fetal death rates (per 1,000 live births and fetal deaths)

Total	13.9
Single	13.4
Twin	38.6
Other multiple births	68.3

Source: *Vital Statistics of the United States, 1964*, Volume II, Part A, Table 3-5.

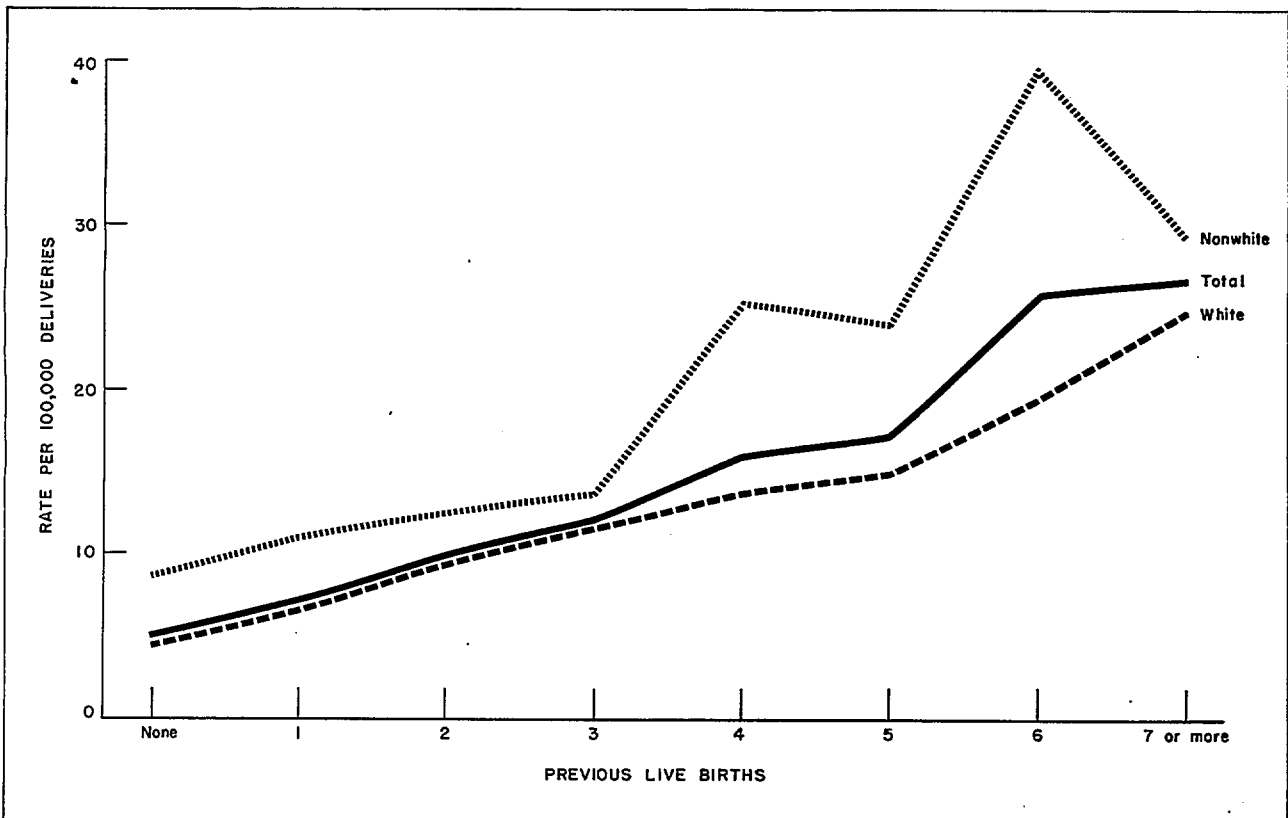


Figure 7. Triplet rates per 100,000 deliveries, by number of previous live births and color.

Table G. Sex ratios of all deliveries, live births, and fetal deaths, by plurality of delivery and color: United States, 1964

[Based on a 100-percent count of registered fetal deaths and registered births in twin and triplet deliveries and a 50-percent sample of registered live births in single deliveries]

Type of delivery	United States	White	Nonwhite		
			Total	Negro	Other
<u>All deliveries</u>					
Single-----	104.9	105.4	102.6	---	---
Twin-----	103.2	103.5	101.9	102.0	99.6
Triplet-----	94.4	86.7	119.3	120.9	¹ 106.3
<u>Live births</u>					
Single-----	104.8	105.3	102.3	---	---
Twin-----	102.7	103.1	101.2	101.4	98.8
Triplet-----	91.5	85.6	109.7	110.2	¹ 106.3
<u>Fetal deaths</u>					
Single-----	115.7	114.4	119.1	---	---
Twin-----	116.1	116.7	114.7	114.6	¹ 114.8
Triplet-----	*	*	*	*	*

¹ Sex ratios based on fewer than 100 females.

Variations in sex ratios by plurality are different for nonwhite deliveries. Among nonwhite births, the sex ratios for single and twin deliveries are about the same, but that for triplets is substantially higher. For the nonwhite population there were more males than females in triplet deliveries, but for white persons there were fewer males than females.

Of the reported cases of twins, there were 2.3 percent in which both mates were fetal deaths. Nearly half of these were cases with two males. With the high fetal mortality of males and a small proportion of unlike-sexed twins, the estimated percent DZ among cases involving fetal deaths is lower than among cases with all mates born alive.

<i>Cases of twins</i>	<i>Percent DZ</i>
All cases-----	61.8
2 born alive-----	63.1
1 born alive-----	47.3
2 born dead-----	29.4

Among triplets, there was the same proportion of cases with all the mates being fetal deaths (2.3 percent); of these, over half were cases where two or three of the mates were male.

SUMMARY

The frequency of multiple births varies independently with both the age and parity of the mother. The twinning rate increases with age to the 35-39 age group, and then declines. The rate also increases with increasing parity. Negro twin rates are consistently higher than the white rates. The differences observed by age, parity, and race are due almost entirely to variations in the frequency of dizygotic (fraternal) twins. The monozygotic (identical) twins occur with about the same frequency, regardless of the characteristics of the mother.

The triplet rates show the same relationships as the twin rates to age, parity, and race.

For white deliveries the male's chance of surviving to term decreases more rapidly than

the female's as the plurality of the delivery increases. The sex ratio decreases as the plurality increases from single to triplet deliveries. The nonwhite triplet deliveries, on the other hand, have the highest sex ratio.

REFERENCES

¹Guttmacher, A. F.: The incidence of multiple births in man and some of the other unipara. *Obst.&Gynec.* 2(1):22-35, July 1953. p. 30.

²*Ibid.*, p. 31.

³Waterhouse, J. A. H.: Twinning in twin pedigrees. *Brit. J.Social Med.* 4:197-216, Oct. 1950.

⁴Yerushalmy J., and Sheerar, S. E.: Studies on twins I. The relation of order of birth and age of mother to the fre-

quency of like-sexed and unlike-sexed twin deliveries. *Human Biol.* 12(1):95-113, Feb. 1940.

⁵Zeleny, C.: The relative numbers of twins and triplets. *Science* 53(1368):262-263, Mar. 18, 1921.

⁶Guttmacher, *Op. cit.*, p. 28.

⁷Gittelsohn, A., and Milham, S.: Statistical study of twins—methods. *Am.J.Pub.Health* 54(2):286-294, Feb. 1964.

⁸Komai, T., and Fukuoka, G.: Frequency of multiple births among the Japanese and related peoples. *Am.J.Phys.Anthropol.* 21:433-447, July-Sept. 1936.

⁹National Center for Health Statistics: *Vital Statistics of the United States, 1964*, Vol. I, Pt. A. Washington. U.S. Government Printing Office, 1966. p. 6-9.

¹⁰National Office of Vital Statistics: Plural birth statistics, United States and each State, 1944. *Vital Statistics—Special Reports.* 25(8):339-361. Public Health Service. Washington, D.C., July 1947. p. 340.



DETAILED TABLES

	Page
Table 1.. Cases of live-born twins per 1,000 deliveries, by age of mother, number of previous live births, race, and type of twin: United States, 1964-----	15
2. Cases of plural births, by race, live-birth status, and sex: United States and each State, 1964-----	19
3. Cases of plural births, by race, live-birth status, sex, and age of mother: United States, 1964-----	40
4. Cases of plural births, by race, live-birth status, sex, and number of previous live births: United States, 1964-----	43
5. Cases of live-born twins, by sex, race, age of mother, and number of previous live births: United States, 1964-----	46

Table 1. Cases of live-born twins per 1,000 deliveries, by age of mother, number of previous live births, race, and type of twin: United States, 1964

[Based on a 100-percent count of registered births in twin deliveries and a 50-percent sample of all registered live births, which were used to estimate the total number of deliveries. Twin deliveries include only those in which there were two live births. Excludes cases in which age or number of previous live births was not stated]

Age of mother	Total	Previous live births							
		None	1	2	3	4	5	6	7+
<u>ALL RACES</u>									
<u>Total cases</u>									
All ages-----	9.7	6.5	8.6	10.2	11.4	13.1	13.9	15.5	18.7
Under 15 years-----	5.4	5.4	*	-	-	-	-	-	-
15-19 years-----	5.9	5.3	7.4	8.4	10.9	18.2	-	-	-
20-24 years-----	8.2	6.6	8.1	9.5	10.4	11.1	12.1	17.7	24.1
25-29 years-----	10.5	8.3	8.8	10.3	11.2	13.0	12.9	14.4	18.0
30-34 years-----	13.1	9.2	11.1	11.3	12.4	13.7	14.9	16.7	20.0
35-39 years-----	14.4	9.3	12.5	11.7	12.8	14.3	15.6	15.9	19.6
40-44 years-----	11.5	6.0	9.5	9.6	8.3	12.8	11.4	11.6	15.1
45 years and over-----	6.0	*	*	*	*	*	-	*	6.0
<u>Monozygotic</u>									
All ages-----	3.6	3.4	3.6	3.5	3.7	3.8	3.2	4.5	4.4
Under 15 years-----	3.3	3.2	*	-	-	-	-	-	-
15-19 years-----	3.1	3.2	3.3	2.9	4.5	7.8	-	-	-
20-24 years-----	3.5	3.2	3.5	3.4	3.6	2.8	2.9	6.7	6.9
25-29 years-----	3.6	3.9	3.4	3.6	3.8	4.1	2.6	3.6	4.1
30-34 years-----	3.9	4.4	3.8	3.5	4.1	3.8	2.7	5.2	4.4
35-39 years-----	4.0	2.1	4.3	4.0	3.2	4.0	5.2	3.8	4.5
40-44 years-----	4.5	4.2	4.6	4.0	3.7	5.3	3.9	5.5	4.6
45 years and over-----	3.0	*	*	*	*	*	-	*	2.4
<u>Dizygotic</u>									
All ages-----	6.1	3.1	5.0	6.7	7.7	9.3	10.7	11.0	14.3
Under 15 years-----	2.1	2.2	*	-	-	-	-	-	-
15-19 years-----	2.8	2.1	4.1	5.5	6.4	10.4	-	-	-
20-24 years-----	4.7	3.4	4.6	6.1	6.8	8.3	9.2	11.0	17.2
25-29 years-----	6.9	4.4	5.4	6.7	7.4	8.9	10.3	10.8	13.9
30-34 years-----	9.2	4.8	7.3	7.8	8.3	9.9	12.2	11.5	15.6
35-39 years-----	10.4	7.2	8.2	7.7	9.6	10.3	10.4	12.1	15.1
40-44 years-----	7.0	1.8	4.9	5.6	4.6	7.5	7.5	6.1	10.5
45 years and over-----	3.0	*	*	*	*	*	-	*	3.6

Table 1. Cases of live-born twins per 1,000 deliveries, by age of mother, number of previous live births, race, and type of twin: United States, 1964—Con.

[Based on a 100-percent count of registered births in twin deliveries and a 50-percent sample of all registered live births, which were used to estimate the total number of deliveries. Twin deliveries include only those in which there were two live births. Excludes cases in which age or number of previous live births was not stated]

Age of mother	Total	Previous live births							
		None	1	2	3	4	5	6	7+
<u>WHITE</u>									
<u>Total cases</u>		Live-born twins per 1,000 deliveries							
All ages-----	9.1	6.3	8.3	9.9	10.9	12.4	12.8	14.3	16.1
Under 15 years-----	4.9	5.0	-	-	-	-	-	-	-
15-19 years-----	5.6	5.1	6.9	8.1	8.7	*	-	-	-
20-24 years-----	7.6	6.4	7.8	9.0	9.5	9.0	9.0	13.3	*
25-29 years-----	9.7	8.2	8.5	10.0	10.5	11.8	10.9	12.7	14.5
30-34 years-----	12.2	8.9	10.9	10.9	12.0	13.3	13.9	16.1	17.2
35-39 years-----	13.4	8.9	12.4	11.4	12.7	13.9	15.0	14.7	17.6
40-44 years-----	10.6	5.7	9.6	9.8	8.2	12.3	11.7	10.5	12.7
45 years and over-----	6.7	*	*	*	*	*	-	*	*
<u>Monozygotic</u>									
All ages-----	3.6	3.3	3.5	3.6	3.7	3.9	3.1	4.3	4.1
Under 15 years-----	2.6	2.7	-	-	-	-	-	-	-
15-19 years-----	3.2	3.2	3.4	3.3	3.5	*	-	-	-
20-24 years-----	3.4	3.2	3.6	3.4	3.6	2.7	2.3	7.7	*
25-29 years-----	3.5	3.9	3.4	3.6	3.6	4.1	2.3	3.0	3.6
30-34 years-----	3.8	4.2	3.9	3.6	4.2	3.9	2.5	5.2	4.1
35-39 years-----	3.7	2.2	4.3	3.7	2.9	4.1	5.1	3.6	4.0
40-44 years-----	4.5	4.2	4.9	4.3	3.9	4.7	4.1	5.7	4.8
45 years and over-----	2.9	*	*	*	*	*	-	*	*
<u>Dizygotic</u>									
All ages-----	5.5	3.0	4.8	6.3	7.2	8.5	9.7	10.0	12.0
Under 15 years-----	2.3	2.3	-	-	-	-	-	-	-
15-19 years-----	2.4	1.9	3.5	4.8	5.2	*	-	-	-
20-24 years-----	4.2	3.2	4.2	5.6	5.9	6.3	6.7	5.6	*
25-29 years-----	6.2	4.3	5.1	6.4	6.9	7.7	8.6	9.7	10.9
30-34 years-----	8.4	4.7	7.0	7.3	7.8	9.4	11.4	10.9	13.1
35-39 years-----	9.7	6.7	8.1	7.7	9.8	9.8	9.9	11.1	13.6
40-44 years-----	6.1	1.5	4.7	5.5	4.3	7.6	7.6	4.8	7.9
45 years and over-----	3.8	*	*	*	*	*	-	*	*

Table 1. Cases of live-born twins per 1,000 deliveries, by age of mother, number of previous live births, race, and type of twin: United States, 1964—Con.

[Based on a 100-percent count of registered births in twin deliveries and a 50-percent sample of all registered live births, which were used to estimate the total number of deliveries. Twin deliveries include only those in which there were two live births. Excludes cases in which age or number of previous live births was not stated]

Age of mother	Total	Previous live births							
		None	1	2	3	4	5	6	7+
NEGRO									
<u>Total cases</u>									
All ages-----	13.0	7.2	10.6	12.6	14.4	16.5	17.2	18.5	22.8
Under 15 years-----	5.2	5.1	*	-	-	-	-	-	-
15-19 years-----	7.0	5.8	8.5	8.7	12.5	19.5	-	-	-
20-24 years-----	11.6	8.9	10.9	12.1	13.0	14.6	14.9	20.8	28.9
25-29 years-----	15.6	9.1	12.8	14.5	15.6	17.6	17.5	17.3	20.4
30-34 years-----	18.5	10.8	13.0	16.6	16.7	16.9	18.6	18.4	23.6
35-39 years-----	19.9	13.1	15.2	14.0	14.7	17.0	19.2	20.8	23.8
40-44 years-----	16.9	*	*	*	*	18.1	8.9	17.5	21.3
45 years and over-----	*	-	-	-	*	-	-	-	*
<u>Monozygotic</u>									
All ages-----	3.6	3.2	3.4	3.4	3.9	3.7	3.3	4.9	4.9
Under 15 years-----	3.6	3.4	*	-	-	-	-	-	-
15-19 years-----	2.9	2.9	3.1	2.3	5.0	3.9	-	-	-
20-24 years-----	3.6	3.5	3.6	3.9	3.7	3.0	3.1	6.4	10.7
25-29 years-----	3.8	3.2	3.7	3.7	4.2	4.0	3.1	4.8	4.2
30-34 years-----	3.7	5.1	2.1	2.1	2.6	3.9	3.0	5.2	4.7
35-39 years-----	4.9	2.1	3.9	6.0	6.9	2.6	5.5	4.3	5.2
40-44 years-----	3.9	*	*	*	*	10.9	1.8	3.5	4.5
45 years and over-----	*	-	-	-	*	-	-	-	*
<u>Dizygotic</u>									
All ages-----	9.4	4.0	7.2	9.2	10.5	12.8	13.9	13.6	17.9
Under 15 years-----	1.6	1.7	*	-	-	-	-	-	-
15-19 years-----	4.1	2.9	5.4	6.4	7.5	15.6	-	-	-
20-24 years-----	8.0	5.4	7.3	8.2	9.3	11.6	11.8	14.4	18.2
25-29 years-----	11.8	5.9	9.1	10.8	11.4	13.6	14.4	12.5	16.2
30-34 years-----	14.8	5.7	10.9	14.5	14.1	13.0	15.6	13.2	18.9
35-39 years-----	15.0	11.0	11.3	8.0	7.8	14.4	13.7	16.5	18.6
40-44 years-----	13.0	*	*	*	*	7.2	7.1	14.0	16.8
45 years and over-----	*	-	-	-	*	-	-	-	*

Table 1. Cases of live-born twins per 1,000 deliveries, by age of mother, number of previous live births, race, and type of twin: United States, 1964—Con.

[Based on a 100-percent count of registered births in twin deliveries and a 50-percent sample of all registered live births, which were used to estimate the total number of deliveries. Twin deliveries include only those in which there were two live births. Excludes cases in which age or number of previous live births was not stated]

Age of mother	Total	Previous live births							
		None	1	2	3	4	5	6	7+
<u>OTHER</u>									
<u>Total cases</u>		Live-born twins per 1,000 deliveries.							
All ages-----	10.1	8.0	8.2	8.2	12.8	12.3	13.7	11.5	15.7
Under 15 years-----	*	*	-	-	-	-	-	-	-
15-19 years-----	7.4	5.3	11.4	*	*	-	-	-	-
20-24 years-----	7.3	6.9	6.5	8.1	10.3	*	*	-	-
25-29 years-----	10.2	11.2	8.0	7.0	14.2	12.4	*	*	21.5
30-34 years-----	14.0	16.4	10.1	7.0	15.6	13.8	20.4	14.7	18.5
35-39 years-----	13.7	*	*	*	*	21.0	*	*	13.9
40-44 years-----	9.6	-	*	*	*	*	*	*	*
45 years and over-----	*	-	-	-	-	-	-	-	*
<u>Monozygotic</u>									
All ages-----	5.0	4.7	5.1	3.8	6.2	4.1	6.5	4.5	6.0
Under 15 years-----	*	*	-	-	-	-	-	-	-
15-19 years-----	3.4	2.8	3.4	*	*	-	-	-	-
20-24 years-----	4.0	3.7	5.2	2.7	4.2	*	*	-	-
25-29 years-----	5.1	7.6	4.5	2.9	8.3	4.9	*	*	5.9
30-34 years-----	6.1	14.1	6.1	4.5	6.2	2.0	6.8	6.7	5.3
35-39 years-----	7.0	*	*	*	*	8.4	*	*	8.3
40-44 years-----	6.4	-	*	*	*	*	*	*	*
45 years and over-----	*	-	-	-	-	-	-	-	*
<u>Dizygotic</u>									
All ages-----	5.1	3.3	3.1	4.4	6.6	8.2	7.2	7.0	9.7
Under 15 years-----	*	*	-	-	-	-	-	-	-
15-19 years-----	4.0	2.5	8.0	*	*	-	-	-	-
20-24 years-----	3.3	3.2	1.3	5.4	6.1	*	*	-	-
25-29 years-----	5.1	3.6	3.5	4.1	5.9	7.5	*	*	15.6
30-34 years-----	7.9	2.3	4.0	2.5	9.4	11.8	13.6	8.0	13.2
35-39 years-----	6.7	*	*	*	*	12.6	*	*	5.6
40-44 years-----	3.2	-	*	*	*	*	*	*	*
45 years and over-----	*	-	-	-	-	-	-	-	*

Table 2. Cases of plural births, by race, live-birth status, and sex: United States and each State, 1964

(See general notes on page 50)

Plurality, State, live-birth status, and sex	Total	White	Negro	Other	Plurality, State, live-birth status, and sex	Total	White	Negro	Other
<u>Twins</u>					<u>Twins</u>				
United States--	¹ 41,259	32,224	8,487	548	Arizona-----	253	202	14	37
Both born alive-----	38,752	30,446	7,798	508	Both born alive-----	239	189	14	36
1 born alive-----	1,562	1,106	438	18	1 born alive-----	7	7	-	-
Both born dead-----	945	672	251	22	Both born dead-----	7	6	-	1
2 males-----	14,527	11,550	2,772	205	2 males-----	82	69	1	12
Both born alive-----	13,516	10,809	2,520	187	Both born alive-----	77	64	1	12
1 born alive-----	589	435	147	7	1 born alive-----	3	3	-	-
Both born dead-----	422	306	105	11	Both born dead-----	2	2	-	-
1 male, 1 female---	12,715	9,603	2,978	134	1 male, 1 female---	84	61	8	15
Both born alive-----	12,231	9,293	2,809	129	Both born alive-----	82	59	8	15
1 born alive--Male---	168	101	64	3	1 born alive--Male---	-	-	-	-
Female-----	187	131	55	1	Female-----	1	1	-	-
Both born dead-----	129	78	50	1	Both born dead-----	1	1	-	-
2 females-----	13,888	10,994	2,688	206	2 females-----	87	72	5	10
Both born alive-----	13,005	10,344	2,469	192	Both born alive-----	80	66	5	9
1 born alive-----	557	403	149	5	1 born alive-----	3	3	-	-
Both born dead-----	326	247	70	9	Both born dead-----	4	3	-	1
Alabama-----	791	399	391	1	Arkansas-----	456	262	193	1
Both born alive-----	710	363	346	1	Both born alive-----	422	240	181	1
1 born alive-----	57	23	34	-	1 born alive-----	23	14	9	-
Both born dead-----	24	13	11	-	Both born dead-----	11	8	3	-
2 males-----	268	149	119	-	2 males-----	166	104	62	-
Both born alive-----	240	135	105	-	Both born alive-----	150	93	57	-
1 born alive-----	18	9	9	-	1 born alive-----	11	7	4	-
Both born dead-----	10	5	5	-	Both born dead-----	5	4	1	-
1 male, 1 female---	262	123	139	-	1 male, 1 female---	127	57	69	1
Both born alive-----	237	116	121	-	Both born alive-----	122	56	65	1
1 born alive--Male---	11	4	7	-	1 born alive--Male---	1	-	1	-
Female-----	8	1	7	-	Female-----	2	1	1	-
Both born dead-----	6	2	4	-	Both born dead-----	2	-	2	-
2 females-----	260	126	133	1	2 females-----	158	97	61	-
Both born alive-----	233	112	120	1	Both born alive-----	150	91	59	-
1 born alive-----	20	9	11	-	1 born alive-----	6	4	2	-
Both born dead-----	7	5	2	-	Both born dead-----	2	2	-	-
Alaska-----	59	43	1	15	California-----	3,737	3,175	446	116
Both born alive-----	59	43	1	15	Both born alive-----	3,575	3,038	430	107
1 born alive-----	-	-	-	-	1 born alive-----	98	84	11	3
Both born dead-----	-	-	-	-	Both born dead-----	64	53	5	6
2 males-----	28	22	-	6	2 males-----	1,312	1,138	135	39
Both born alive-----	28	22	-	6	Both born alive-----	1,253	1,089	129	35
1 born alive-----	-	-	-	-	1 born alive-----	30	23	5	2
Both born dead-----	-	-	-	-	Both born dead-----	29	26	1	2
1 male, 1 female---	13	8	1	4	1 male, 1 female---	1,126	943	160	23
Both born alive-----	13	8	1	4	Both born alive-----	1,093	916	155	22
1 born alive--Male---	-	-	-	-	1 born alive--Male---	14	11	2	1
Female-----	-	-	-	-	Female-----	12	10	2	-
Both born dead-----	-	-	-	-	Both born dead-----	7	6	1	-
2 females-----	18	13	-	5	2 females-----	1,297	1,092	151	54
Both born alive-----	18	13	-	5	Both born alive-----	1,229	1,033	146	50
1 born alive-----	-	-	-	-	1 born alive-----	40	38	2	-
Both born dead-----	-	-	-	-	Both born dead-----	28	21	3	4

¹Excludes 603 cases with only 1 mate reported; of those reported, 360 were born alive and 243 were born dead.

NOTE: Cases of multiple births by sex composition may not sum to the total. The totals include cases with sex composition unknown.

Table 2. Cases of plural births, by race, live-birth status, and sex: United States and each State, 1964—Con.

Plurality, State, live-birth status, and sex	Total	White	Negro	Other	Plurality, State, live-birth status, and sex	Total	White	Negro	Other
<u>Twins</u>					<u>Twins</u>				
Colorado-----	389	368	16	5	Dist. of Columbia-----	232	48	183	1
Both born alive-----	366	346	15	5	Both born alive-----	218	45	172	1
1 born alive-----	13	12	1	-	1 born alive-----	12	3	9	-
Both born dead-----	10	10	-	-	Both born dead-----	2	-	2	-
2 males-----	136	129	6	1	2 males-----	67	18	49	-
Both born alive-----	126	119	6	1	Both born alive-----	61	16	45	-
1 born alive-----	6	6	-	-	1 born alive-----	6	2	4	-
Both born dead-----	4	4	-	-	Both born dead-----	-	-	-	-
1 male, 1 female---	115	110	3	2	1 male, 1 female---	77	13	63	1
Both born alive-----	112	107	3	2	Both born alive-----	75	13	61	1
1 born alive—Male---	1	1	-	-	1 born alive—Male---	1	-	1	-
Female-----	-	-	-	-	Female-----	1	-	1	-
Both born dead-----	2	2	-	-	Both born dead-----	-	-	-	-
2 females-----	136	127	7	2	2 females-----	88	17	71	-
Both born alive-----	128	120	6	2	Both born alive-----	82	16	66	-
1 born alive-----	5	4	1	-	1 born alive-----	4	1	3	-
Both born dead-----	3	3	-	-	Both born dead-----	2	-	2	-
Connecticut-----	568	500	66	2	Florida-----	1,206	788	417	1
Both born alive-----	533	468	63	2	Both born alive-----	1,127	751	375	1
1 born alive-----	24	22	2	-	1 born alive-----	52	23	29	-
Both born dead-----	11	10	1	-	Both born dead-----	27	14	13	-
2 males-----	191	170	21	-	2 males-----	401	263	137	1
Both born alive-----	178	157	21	-	Both born alive-----	367	247	119	1
1 born alive-----	7	7	-	-	1 born alive-----	23	10	13	-
Both born dead-----	6	6	-	-	Both born dead-----	11	6	5	-
1 male, 1 female---	165	138	27	-	1 male, 1 female---	355	209	146	-
Both born alive-----	160	135	25	-	Both born alive-----	343	205	138	-
1 born alive—Male---	2	1	1	-	1 born alive—Male---	5	2	3	-
Female-----	2	2	-	-	Female-----	3	2	1	-
Both born dead-----	1	-	1	-	Both born dead-----	4	-	4	-
2 females-----	211	191	18	2	2 females-----	446	314	132	-
Both born alive-----	195	176	17	2	Both born alive-----	417	299	118	-
1 born alive-----	12	11	1	-	1 born alive-----	17	7	10	-
Both born dead-----	4	4	-	-	Both born dead-----	12	8	4	-
Delaware-----	112	82	30	-	Georgia-----	1,014	529	482	3
Both born alive-----	107	81	26	-	Both born alive-----	933	495	435	3
1 born alive-----	3	1	2	-	1 born alive-----	46	16	30	-
Both born dead-----	2	-	2	-	Both born dead-----	35	18	17	-
2 males-----	41	32	9	-	2 males-----	343	180	161	2
Both born alive-----	38	31	7	-	Both born alive-----	314	166	146	2
1 born alive-----	1	1	-	-	1 born alive-----	16	6	10	-
Both born dead-----	2	-	2	-	Both born dead-----	13	8	5	-
1 male, 1 female---	36	25	11	-	1 male, 1 female---	337	173	164	-
Both born alive-----	36	25	11	-	Both born alive-----	321	168	153	-
1 born alive—Male---	-	-	-	-	1 born alive—Male---	6	1	5	-
Female-----	-	-	-	-	Female-----	5	2	3	-
Both born dead-----	-	-	-	-	Both born dead-----	5	2	3	-
2 females-----	35	25	10	-	2 females-----	329	174	154	1
Both born alive-----	33	25	8	-	Both born alive-----	298	161	136	1
1 born alive-----	2	-	2	-	1 born alive-----	17	6	11	-
Both born dead-----	-	-	-	-	Both born dead-----	14	7	7	-

Table 4. Cases of plural births, by race, live-birth status, and sex: United States and each State, 1964--Con.

Plurality, State, live-birth status, and sex	Total	White	Negro	Other	Plurality, State, live-birth status, and sex	Total	White	Negro	Other
<u>Twins</u>					<u>Twins</u>				
Hawaii-----	135	48	3	84	Indiana-----	1,091	954	136	1
Both born alive-----	124	47	2	75	Both born alive-----	1,033	903	129	1
1 born alive-----	6	1	-	5	1 born alive-----	40	35	5	-
Both born dead-----	5	-	1	4	Both born dead-----	18	16	2	-
2 males-----	59	17	1	41	2 males-----	386	344	42	-
Both born alive-----	53	17	-	36	Both born alive-----	360	320	40	-
1 born alive-----	2	-	-	2	1 born alive-----	19	18	1	-
Both born dead-----	4	-	1	3	Both born dead-----	7	6	1	-
1 male, 1 female---	27	11	1	15	1 male, 1 female---	338	287	51	-
Both born alive-----	27	11	1	15	Both born alive-----	333	283	50	-
1 born alive--Male---	-	-	-	-	1 born alive--Male---	-	-	-	-
Female-----	-	-	-	-	Female-----	2	1	1	-
Both born dead-----	-	-	-	-	Both born dead-----	3	3	-	-
2 females-----	48	20	1	27	2 females-----	365	322	42	1
Both born alive-----	44	19	1	24	Both born alive-----	340	300	39	1
1 born alive-----	3	1	-	2	1 born alive-----	17	15	2	-
Both born dead-----	1	-	-	1	Both born dead-----	8	7	1	-
Idaho-----	120	116	-	4	Iowa-----	509	497	11	1
Both born alive-----	108	107	-	1	Both born alive-----	481	470	10	1
1 born alive-----	5	3	-	2	1 born alive-----	18	18	-	-
Both born dead-----	7	6	-	1	Both born dead-----	10	9	1	-
2 males-----	40	38	-	2	2 males-----	179	175	3	1
Both born alive-----	32	32	-	1	Both born alive-----	171	167	3	1
1 born alive-----	3	2	-	1	1 born alive-----	5	5	-	-
Both born dead-----	5	4	-	1	Both born dead-----	3	3	-	-
1 male, 1 female---	38	37	-	1	1 male, 1 female---	151	146	5	-
Both born alive-----	36	36	-	-	Both born alive-----	144	140	4	-
1 born alive--Male---	1	-	-	1	1 born alive--Male---	2	2	-	-
Female-----	-	-	-	-	Female-----	4	4	-	-
Both born dead-----	1	1	-	-	Both born dead-----	1	-	1	-
2 females-----	42	41	-	1	2 females-----	178	175	3	-
Both born alive-----	40	39	-	1	Both born alive-----	166	163	3	-
1 born alive-----	1	1	-	-	1 born alive-----	6	6	-	-
Both born dead-----	1	1	-	-	Both born dead-----	6	6	-	-
Illinois-----	2,383	1,827	544	12	Kansas-----	422	376	43	3
Both born alive-----	2,250	1,729	509	12	Both born alive-----	401	360	38	3
1 born alive-----	99	74	25	-	1 born alive-----	13	8	5	-
Both born dead-----	34	24	10	-	Both born dead-----	8	8	-	-
2 males-----	812	629	177	6	2 males-----	152	132	18	2
Both born alive-----	766	593	167	6	Both born alive-----	143	126	15	2
1 born alive-----	28	24	4	-	1 born alive-----	5	2	3	-
Both born dead-----	18	12	6	-	Both born dead-----	4	4	-	-
1 male, 1 female---	769	565	201	3	1 male, 1 female---	120	103	16	1
Both born alive-----	736	546	187	3	Both born alive-----	114	99	14	1
1 born alive--Male---	7	1	6	-	1 born alive--Male---	3	2	1	-
Female-----	17	13	4	-	Female-----	2	1	1	-
Both born dead-----	9	5	4	-	Both born dead-----	1	1	-	-
2 females-----	799	631	165	3	2 females-----	150	141	9	-
Both born alive-----	748	590	155	3	Both born alive-----	144	135	9	-
1 born alive-----	44	34	10	-	1 born alive-----	3	3	-	-
Both born dead-----	7	7	-	-	Both born dead-----	3	3	-	-

Table 2. Cases of plural births, by race, live-birth status, and sex: United States and each State, 1964—Con.

Plurality, State, live-birth status, and sex	Total	White	Negro	Other	Plurality, State, live-birth status, and sex	Total	White	Negro	Other
<u>Twins</u>					<u>Twins</u>				
Kentucky-----	629	553	74	2	Maryland-----	842	604	234	4
Both born alive-----	592	522	68	2	Both born alive-----	791	570	218	3
1 born alive-----	23	20	3	-	1 born alive-----	33	20	12	1
Both born dead-----	14	11	3	-	Both born dead-----	18	14	4	-
2 males-----	206	184	20	2	2 males-----	309	228	80	1
Both born alive-----	190	170	18	2	Both born alive-----	280	208	71	1
1 born alive-----	9	9	-	-	1 born alive-----	21	14	7	-
Both born dead-----	7	5	2	-	Both born dead-----	8	6	2	-
1 male, 1 female---	187	166	21	-	1 male, 1 female---	244	157	86	1
Both born alive-----	180	160	20	-	Both born alive-----	236	154	82	-
1 born alive—Male---	2	2	-	-	1 born alive—Male---	5	2	2	1
Female-	4	3	1	-	Both born dead-----	3	1	2	-
Both born dead-----	1	1	-	-	Both born dead-----	-	-	-	-
2 females-----	236	203	33	-	2 females-----	289	219	68	2
Both born alive-----	222	192	30	-	Both born alive-----	275	208	65	2
1 born alive-----	8	6	2	-	1 born alive-----	4	3	1	-
Both born dead-----	6	5	1	-	Both born dead-----	10	8	2	-
Louisiana-----	1,001	477	523	1	Massachusetts---	1,084	1,025	54	5
Both born alive-----	938	449	488	1	Both born alive-----	1,054	998	51	5
1 born alive-----	52	24	28	-	1 born alive-----	23	20	3	-
Both born dead-----	11	4	7	-	Both born dead-----	7	7	-	-
2 males-----	370	197	172	1	2 males-----	394	377	15	2
Both born alive-----	339	183	155	1	Both born alive-----	382	366	14	2
1 born alive-----	22	11	11	-	1 born alive-----	8	7	1	-
Both born dead-----	9	3	6	-	Both born dead-----	4	4	-	-
1 male, 1 female---	314	130	184	-	1 male, 1 female---	329	304	23	2
Both born alive-----	302	126	176	-	Both born alive-----	321	298	21	2
1 born alive—Male---	6	-	6	-	1 born alive—Male---	4	3	1	-
Female-	6	4	2	-	Both born dead-----	4	3	1	-
Both born dead-----	-	-	-	-	Both born dead-----	-	-	-	-
2 females-----	317	150	167	-	2 females-----	361	344	16	1
Both born alive-----	297	140	157	-	Both born alive-----	351	334	16	1
1 born alive-----	18	9	9	-	1 born alive-----	7	7	-	-
Both born dead-----	2	1	1	-	Both born dead-----	3	3	-	-
Maine-----	202	195	4	3	Michigan-----	1,852	1,545	302	5
Both born alive-----	192	185	4	3	Both born alive-----	1,758	1,464	289	5
1 born alive-----	3	3	-	-	1 born alive-----	58	50	8	-
Both born dead-----	7	7	-	-	Both born dead-----	36	31	5	-
2 males-----	63	62	1	-	2 males-----	651	552	99	-
Both born alive-----	61	60	1	-	Both born alive-----	612	517	95	-
1 born alive-----	-	-	-	-	1 born alive-----	24	21	3	-
Both born dead-----	2	2	-	-	Both born dead-----	15	14	1	-
1 male, 1 female---	78	74	1	3	1 male, 1 female---	595	486	108	1
Both born alive-----	74	70	1	3	Both born alive-----	575	470	104	1
1 born alive—Male---	2	2	-	-	1 born alive—Male---	8	5	3	-
Female-	1	1	-	-	Both born dead-----	9	9	-	-
Both born dead-----	1	1	-	-	Both born dead-----	3	2	1	-
2 females-----	61	59	2	-	2 females-----	605	506	95	4
Both born alive-----	57	55	2	-	Both born alive-----	571	477	90	4
1 born alive-----	-	-	-	-	1 born alive-----	16	14	2	-
Both born dead-----	4	4	-	-	Both born dead-----	18	15	3	-

Table 2. Cases of plural births, by race, live-birth status, and sex: United States and each State, 1964—Con.

Plurality, State, live-birth status, and sex	Total	White	Negro	Other	Plurality, State, live-birth status, and sex	Total	White	Negro	Other
<u>Twins</u>					<u>Twins</u>				
Minnesota-----	829	792	15	22	Montana-----	139	128	-	11
Both born alive-----	783	748	15	20	Both born alive-----	131	121	-	10
1 born alive-----	29	28	-	1	1 born alive-----	6	5	-	1
Both born dead-----	17	16	-	1	Both born dead-----	2	2	-	-
2 males-----	315	303	6	6	2 males-----	50	46	-	4
Both born alive-----	296	285	6	5	Both born alive-----	49	45	-	4
1 born alive-----	8	8	-	-	1 born alive-----	-	-	-	-
Both born dead-----	11	10	-	1	Both born dead-----	1	1	-	-
1 male, 1 female---	243	234	2	7	1 male, 1 female---	44	41	-	3
Both born alive-----	236	227	2	7	Both born alive-----	42	40	-	2
1 born alive—Male---	4	4	-	-	1 born alive—Male---	2	1	-	1
Female-	1	1	-	-	Female-	-	-	-	-
Both born dead-----	2	2	-	-	Both born dead-----	-	-	-	-
2 females-----	271	255	7	9	2 females-----	45	41	-	4
Both born alive-----	251	236	7	8	Both born alive-----	40	36	-	4
1 born alive-----	16	15	-	1	1 born alive-----	4	4	-	-
Both born dead-----	4	4	-	-	Both born dead-----	1	1	-	-
Mississippi-----	724	238	485	1	Nebraska-----	305	283	19	3
Both born alive-----	632	211	420	1	Both born alive-----	289	269	17	3
1 born alive-----	53	18	35	-	1 born alive-----	10	8	2	-
Both born dead-----	39	9	30	-	Both born dead-----	6	6	-	-
2 males-----	253	92	161	-	2 males-----	114	107	6	1
Both born alive-----	219	81	138	-	Both born alive-----	108	103	4	1
1 born alive-----	21	8	13	-	1 born alive-----	3	1	2	-
Both born dead-----	13	3	10	-	Both born dead-----	3	3	-	-
1 male, 1 female---	212	59	153	-	1 male, 1 female---	96	87	7	2
Both born alive-----	193	53	140	-	Both born alive-----	93	84	7	2
1 born alive—Male---	6	2	4	-	1 born alive—Male---	-	-	-	-
Female-	3	2	1	-	Female-	2	2	-	-
Both born dead-----	10	2	8	-	Both born dead-----	1	1	-	-
2 females-----	246	83	162	1	2 females-----	94	88	6	-
Both born alive-----	220	77	142	1	Both born alive-----	88	82	6	-
1 born alive-----	18	5	13	-	1 born alive-----	4	4	-	-
Both born dead-----	8	1	7	-	Both born dead-----	2	2	-	-
Missouri-----	894	705	187	2	Nevada-----	107	96	8	3
Both born alive-----	838	659	177	2	Both born alive-----	100	90	7	3
1 born alive-----	44	37	7	-	1 born alive-----	5	4	1	-
Both born dead-----	12	9	3	-	Both born dead-----	2	2	-	-
2 males-----	333	273	60	-	2 males-----	34	30	3	1
Both born alive-----	302	245	57	-	Both born alive-----	33	30	2	1
1 born alive-----	23	21	2	-	1 born alive-----	1	-	1	-
Both born dead-----	8	7	1	-	Both born dead-----	-	-	-	-
1 male, 1 female---	268	203	64	1	1 male, 1 female---	37	33	3	1
Both born alive-----	259	196	62	1	Both born alive-----	37	33	3	1
1 born alive—Male---	3	3	-	-	1 born alive—Male---	-	-	-	-
Female-	6	4	2	-	Female-	-	-	-	-
Both born dead-----	-	-	-	-	Both born dead-----	-	-	-	-
2 females-----	292	229	62	1	2 females-----	34	31	2	1
Both born alive-----	277	218	58	1	Both born alive-----	30	27	2	1
1 born alive-----	11	9	2	-	1 born alive-----	3	3	-	-
Both born dead-----	4	2	2	-	Both born dead-----	1	1	-	-

Table 2. Cases of plural births, by race, live-birth status, and sex: United States and each State, 1964--Con.

Plurality, State, live-birth status, and sex	Total	White	Negro	Other	Plurality, State, live-birth status, and sex	Total	White	Negro	Other
<u>Twins</u>					<u>Twins</u>				
New Hampshire----	121	119	1	1	New York-----	3,908	3,164	725	19
Both born alive-----	115	113	1	1	Both born alive-----	3,662	2,981	666	15
1 born alive-----	2	2	-	-	1 born alive-----	113	93	20	-
Both born dead-----	4	4	-	-	Both born dead-----	133	90	39	4
2 males-----	49	48	1	-	2 males-----	1,370	1,108	252	10
Both born alive-----	45	44	1	-	Both born alive-----	1,290	1,046	236	8
1 born alive-----	1	1	-	-	1 born alive-----	36	31	5	-
Both born dead-----	3	3	-	-	Both born dead-----	44	31	11	2
1 male, 1 female---	27	27	-	-	1 male, 1 female---	1,196	962	232	2
Both born alive-----	27	27	-	-	Both born alive-----	1,158	932	224	2
1 born alive--Male---	-	-	-	-	1 born alive--Male---	15	12	3	-
Female-----	-	-	-	-	Female-----	7	7	-	-
Both born dead-----	-	-	-	-	Both born dead-----	16	11	5	-
2 females-----	45	44	-	1	2 females-----	1,299	1,070	223	6
Both born alive-----	43	42	-	1	Both born alive-----	1,214	1,003	206	5
1 born alive-----	1	1	-	-	1 born alive-----	47	38	9	-
Both born dead-----	1	1	-	-	Both born dead-----	38	29	8	1
New Jersey-----	1,373	1,079	278	16	North Carolina----	1,006	592	397	17
Both born alive-----	1,302	1,024	263	15	Both born alive-----	951	566	368	17
1 born alive-----	41	32	9	-	1 born alive-----	31	12	19	-
Both born dead-----	30	23	6	1	Both born dead-----	24	14	10	-
2 males-----	504	398	101	5	2 males-----	364	224	129	11
Both born alive-----	477	375	97	5	Both born alive-----	338	209	118	11
1 born alive-----	13	12	1	-	1 born alive-----	11	5	6	-
Both born dead-----	14	11	3	-	Both born dead-----	15	10	5	-
1 male, 1 female---	487	371	110	6	1 male, 1 female---	315	166	146	3
Both born alive-----	465	356	104	5	Both born alive-----	299	161	135	3
1 born alive--Male---	9	8	1	-	1 born alive--Male---	7	2	5	-
Female-----	4	1	3	-	Female-----	7	3	4	-
Both born dead-----	9	6	2	1	Both born dead-----	2	-	2	-
2 females-----	381	310	66	5	2 females-----	327	202	122	3
Both born alive-----	360	293	62	5	Both born alive-----	314	196	115	3
1 born alive-----	14	11	3	-	1 born alive-----	6	2	4	-
Both born dead-----	7	6	1	-	Both born dead-----	7	4	3	-
New Mexico-----	226	203	6	17	North Dakota-----	131	119	1	11
Both born alive-----	212	190	6	16	Both born alive-----	124	112	1	11
1 born alive-----	8	8	-	-	1 born alive-----	5	5	-	-
Both born dead-----	6	5	-	1	Both born dead-----	2	2	-	-
2 males-----	76	69	2	5	2 males-----	47	43	-	4
Both born alive-----	67	60	2	5	Both born alive-----	43	39	-	4
1 born alive-----	4	4	-	-	1 born alive-----	2	2	-	-
Both born dead-----	5	5	-	-	Both born dead-----	2	2	-	-
1 male, 1 female---	63	59	2	2	1 male, 1 female---	40	37	-	3
Both born alive-----	61	57	2	2	Both born alive-----	39	36	-	3
1 born alive--Male---	2	2	-	-	1 born alive--Male---	-	-	-	-
Female-----	-	-	-	-	Female-----	1	1	-	-
Both born dead-----	-	-	-	-	Both born dead-----	-	-	-	-
2 females-----	87	75	2	10	2 females-----	44	39	1	4
Both born alive-----	84	73	2	9	Both born alive-----	42	37	1	4
1 born alive-----	2	2	-	-	1 born alive-----	2	2	-	-
Both born dead-----	1	-	-	1	Both born dead-----	-	-	-	-

Table 2. Cases of plural births, by race, live-birth status, and sex: United States and each State, 1964—Con.

Plurality, State, live-birth status, and sex	Total	White	Negro	Other	Plurality, State, live-birth status, and sex	Total	White	Negro	Other
<u>Twins</u>					<u>Twins</u>				
Ohio-----	2,194	1,880	306	8	Pennsylvania-----	2,304	1,948	347	9
Both born alive-----	2,080	1,790	282	8	Both born alive-----	2,142	1,819	316	7
1 born alive-----	76	58	18	-	1 born alive-----	99	77	21	1
Both born dead-----	38	32	6	-	Both born dead-----	63	52	10	1
2 males-----	758	653	101	4	2 males-----	822	715	103	4
Both born alive-----	712	617	91	4	Both born alive-----	748	656	90	2
1 born alive-----	28	23	5	-	1 born alive-----	44	37	6	1
Both born dead-----	18	13	5	-	Both born dead-----	30	22	7	1
1 male, 1 female---	687	577	109	1	1 male, 1 female---	692	561	128	3
Both born alive-----	658	556	101	1	Both born alive-----	665	539	123	3
1 born alive--Male---	7	5	2	-	1 born alive--Male---	9	6	3	-
Female-----	16	11	5	-	Female-----	14	13	1	-
Both born dead-----	6	5	1	-	Both born dead-----	4	3	1	-
2 females-----	747	649	95	3	2 females-----	786	668	116	2
Both born alive-----	710	617	90	3	Both born alive-----	729	624	103	2
1 born alive-----	23	18	5	-	1 born alive-----	29	18	11	-
Both born dead-----	14	14	-	-	Both born dead-----	28	26	2	-
Oklahoma-----	436	338	75	23	Rhode Island-----	181	173	7	1
Both born alive-----	402	315	65	22	Both born alive-----	168	161	7	-
1 born alive-----	16	11	5	-	1 born alive-----	8	7	-	1
Both born dead-----	18	12	5	1	Both born dead-----	5	5	-	-
2 males-----	153	119	27	7	2 males-----	67	64	2	1
Both born alive-----	145	113	25	7	Both born alive-----	59	57	2	-
1 born alive-----	5	4	1	-	1 born alive-----	5	4	-	1
Both born dead-----	3	2	1	-	Both born dead-----	3	3	-	-
1 male, 1 female---	136	103	25	8	1 male, 1 female---	54	52	2	-
Both born alive-----	128	98	22	8	Both born alive-----	53	51	2	-
1 born alive--Male---	1	1	-	-	1 born alive--Male---	1	-	-	-
Female-----	3	1	2	-	Female-----	1	1	-	-
Both born dead-----	4	3	1	-	Both born dead-----	-	-	-	-
2 females-----	146	116	22	8	2 females-----	59	56	3	-
Both born alive-----	129	104	18	7	Both born alive-----	56	53	3	-
1 born alive-----	6	5	1	-	1 born alive-----	2	2	-	-
Both born dead-----	11	7	3	1	Both born dead-----	1	1	-	-
Oregon-----	329	309	9	11	South Carolina-----	567	266	300	1
Both born alive-----	304	286	8	10	Both born alive-----	511	247	263	1
1 born alive-----	13	12	1	-	1 born alive-----	34	13	21	-
Both born dead-----	12	11	-	1	Both born dead-----	22	6	16	-
2 males-----	109	102	3	4	2 males-----	192	93	98	1
Both born alive-----	102	96	3	3	Both born alive-----	173	86	86	1
1 born alive-----	4	4	-	-	1 born alive-----	8	4	4	-
Both born dead-----	3	2	-	1	Both born dead-----	11	3	8	-
1 male, 1 female---	103	96	4	3	1 male, 1 female---	187	80	107	-
Both born alive-----	96	89	4	3	Both born alive-----	174	76	98	-
1 born alive--Male---	-	-	-	-	1 born alive--Male---	6	2	4	-
Female-----	2	2	-	-	Female-----	5	2	3	-
Both born dead-----	5	5	-	-	Both born dead-----	2	-	2	-
2 females-----	112	107	1	4	2 females-----	187	92	95	-
Both born alive-----	106	101	1	4	Both born alive-----	164	85	79	-
1 born alive-----	3	3	-	-	1 born alive-----	14	4	10	-
Both born dead-----	3	3	-	-	Both born dead-----	9	3	6	-

Table 2. Cases of plural births, by race, live-birth status, and sex: United States and each State, 1964—Con.

Plurality, State, live-birth status, and sex	Total	White	Negro	Other	Plurality, State, live-birth status, and sex	Total	White	Negro	Other
<u>Twins</u>					<u>Twins</u>				
South Dakota-----	152	139	-	13	Utah-----	203	194	2	7
Both born alive-----	148	135	-	13	Both born alive-----	198	189	2	7
1 born alive-----	4	4	-	-	1 born alive-----	4	4	-	-
Both born dead-----	-	-	-	-	Both born dead-----	1	1	-	-
2 males-----	50	48	-	2	2 males-----	74	71	1	2
Both born alive-----	49	47	-	2	Both born alive-----	71	68	1	2
1 born alive-----	1	1	-	-	1 born alive-----	2	2	-	-
Both born dead-----	-	-	-	-	Both born dead-----	1	1	-	-
1 male, 1 female---	41	36	-	5	1 male, 1 female---	61	56	1	4
Both born alive-----	40	35	-	5	Both born alive-----	60	55	1	4
1 born alive--Male---	1	1	-	-	1 born alive--Male---	1	1	-	-
Female-----	-	-	-	-	Female-----	-	-	-	-
Both born dead-----	-	-	-	-	Both born dead-----	-	-	-	-
2 females-----	61	55	-	6	2 females-----	68	67	-	1
Both born alive-----	59	53	-	6	Both born alive-----	67	66	-	1
1 born alive-----	2	2	-	-	1 born alive-----	1	1	-	-
Both born dead-----	-	-	-	-	Both born dead-----	-	-	-	-
Tennessee-----	815	576	238	1	Vermont-----	81	79	2	-
Both born alive-----	748	533	214	1	Both born alive-----	76	74	2	-
1 born alive-----	49	33	16	-	1 born alive-----	1	1	-	-
Both born dead-----	18	10	8	-	Both born dead-----	4	4	-	-
2 males-----	301	216	84	1	2 males-----	16	14	2	-
Both born alive-----	266	194	71	1	Both born alive-----	15	13	2	-
1 born alive-----	25	16	9	-	1 born alive-----	1	1	-	-
Both born dead-----	10	6	4	-	Both born dead-----	-	-	-	-
1 male, 1 female---	243	162	81	-	1 male, 1 female---	24	24	-	-
Both born alive-----	231	155	76	-	Both born alive-----	22	22	-	-
1 born alive--Male---	3	2	1	-	1 born alive--Male---	-	-	-	-
Female-----	7	4	3	-	Female-----	-	-	-	-
Both born dead-----	2	1	1	-	Both born dead-----	2	2	-	-
2 females-----	269	197	72	-	2 females-----	41	41	-	-
Both born alive-----	251	184	67	-	Both born alive-----	39	39	-	-
1 born alive-----	13	11	2	-	1 born alive-----	-	-	-	-
Both born dead-----	5	2	3	-	Both born dead-----	2	2	-	-
Texas-----	2,264	1,765	495	4	Virginia-----	1,007	667	333	7
Both born alive-----	2,137	1,675	458	4	Both born alive-----	915	616	293	6
1 born alive-----	78	56	22	-	1 born alive-----	45	20	24	1
Both born dead-----	49	34	15	-	Both born dead-----	47	31	16	-
2 males-----	817	648	169	-	2 males-----	355	252	101	2
Both born alive-----	759	606	153	-	Both born alive-----	321	230	89	2
1 born alive-----	35	25	10	-	1 born alive-----	15	9	6	-
Both born dead-----	23	17	6	-	Both born dead-----	19	13	6	-
1 male, 1 female---	675	506	168	1	1 male, 1 female---	311	192	118	1
Both born alive-----	656	492	163	1	Both born alive-----	298	186	111	1
1 born alive--Male---	5	5	-	-	1 born alive--Male---	3	1	2	-
Female-----	6	3	3	-	Female-----	4	3	1	-
Both born dead-----	8	6	2	-	Both born dead-----	6	2	4	-
2 females-----	770	610	157	3	2 females-----	324	214	107	3
Both born alive-----	722	577	142	3	Both born alive-----	296	200	93	3
1 born alive-----	31	23	8	-	1 born alive-----	18	6	12	-
Both born dead-----	17	10	7	-	Both born dead-----	10	8	2	-

Table 2. Cases of plural births, by race, live-birth status, and sex: United States and each State, 1964—Con.

Plurality, State, live-birth status, and sex	Total	White	Negro	Other	Plurality, State, live-birth status, and sex	Total	White	Negro	Other
<u>Twins</u>					<u>Twins</u>				
Washington-----	535	493	20	22	Wisconsin-----	887	843	37	7
Both born alive-----	511	469	20	22	Both born alive-----	831	790	36	5
1 born alive-----	17	17	-	-	1 born alive-----	45	42	1	2
Both born dead-----	7	7	-	-	Both born dead-----	11	11	-	-
2 males-----	182	167	8	7	2 males-----	311	299	10	2
Both born alive-----	173	158	8	7	Both born alive-----	287	276	9	2
1 born alive-----	3	3	-	-	1 born alive-----	18	17	1	-
Both born dead-----	6	6	-	-	Both born dead-----	6	6	-	-
1 male, 1 female---	154	142	8	4	1 male, 1 female---	286	269	17	-
Both born alive-----	150	138	8	4	Both born alive-----	278	261	17	-
1 born alive—Male---	-	-	-	-	1 born alive—Male---	3	3	-	-
Female-----	4	4	-	-	Female-----	5	5	-	-
Both born dead-----	-	-	-	-	Both born dead-----	-	-	-	-
2 females-----	197	182	4	11	2 females-----	287	272	10	5
Both born alive-----	188	173	4	11	Both born alive-----	266	253	10	3
1 born alive-----	8	8	-	-	1 born alive-----	16	14	-	2
Both born dead-----	1	1	-	-	Both born dead-----	5	5	-	-
West Virginia----	373	348	25	-	Wyoming-----	81	75	2	4
Both born alive-----	356	331	25	-	Both born alive-----	75	69	2	4
1 born alive-----	12	12	-	-	1 born alive-----	6	6	-	-
Both born dead-----	5	5	-	-	Both born dead-----	-	-	-	-
2 males-----	127	113	14	-	2 males-----	28	26	-	2
Both born alive-----	122	108	14	-	Both born alive-----	26	24	-	2
1 born alive-----	3	3	-	-	1 born alive-----	2	2	-	-
Both born dead-----	2	2	-	-	Both born dead-----	-	-	-	-
1 male, 1 female---	125	124	1	-	1 male, 1 female---	21	18	2	1
Both born alive-----	121	120	1	-	Both born alive-----	20	17	2	1
1 born alive—Male---	1	1	-	-	1 born alive—Male---	-	-	-	-
Female-----	1	1	-	-	Female-----	1	1	-	-
Both born dead-----	2	2	-	-	Both born dead-----	-	-	-	-
2 females-----	121	111	10	-	2 females-----	32	31	-	1
Both born alive-----	113	103	10	-	Both born alive-----	29	28	-	1
1 born alive-----	7	7	-	-	1 born alive-----	3	3	-	-
Both born dead-----	1	1	-	-	Both born dead-----	-	-	-	-

Table 2. Cases of plural births, by race, live-birth status, and sex: United States and each State, 1964—Con.

Plurality, State, live-birth status, and sex	Total	White	Negro	Other	Plurality, State, live-birth status, and sex	Total	White	Negro	Other
<u>Triplets</u>					<u>Triplets</u>				
United States--	² 399	292	95	12	Arizona-----	2	-	1	1
All born alive-----	360	262	87	11	All born alive-----	2	-	1	1
2 born alive-----	18	15	2	1	2 born alive-----	-	-	-	-
1 born alive-----	12	8	4	-	1 born alive-----	-	-	-	-
All born dead-----	9	7	2	-	All born dead-----	-	-	-	-
3 males-----	104	71	29	4	3 males-----	-	-	-	-
All born alive-----	91	63	24	4	All born alive-----	-	-	-	-
2 born alive-----	4	4	-	-	2 born alive-----	-	-	-	-
1 born alive-----	6	2	4	-	1 born alive-----	-	-	-	-
All born dead-----	3	2	1	-	All born dead-----	-	-	-	-
2 males, 1 female--	90	65	24	1	2 males, 1 female--	1	-	1	-
All born alive-----	81	59	21	1	All born alive-----	1	-	1	-
2 born alive:					2 born alive:				
1 male, 1 female---	5	3	2	-	1 male, 1 female---	-	-	-	-
2 males-----	-	-	-	-	2 males-----	-	-	-	-
1 born alive—Male---	-	-	-	-	1 born alive—Male---	-	-	-	-
Female-----	2	2	-	-	Female-----	-	-	-	-
All born dead-----	2	1	1	-	All born dead-----	-	-	-	-
1 male, 2 females--	85	61	21	3	1 male, 2 females--	-	-	-	-
All born alive-----	79	55	21	3	All born alive-----	-	-	-	-
2 born alive:					2 born alive:				
1 male, 1 female---	3	3	-	-	1 male, 1 female---	-	-	-	-
2 females-----	-	-	-	-	2 females-----	-	-	-	-
1 born alive—Male---	1	1	-	-	1 born alive—Male---	-	-	-	-
Female-----	-	-	-	-	Female-----	-	-	-	-
All born dead-----	2	2	-	-	All born dead-----	-	-	-	-
3 females-----	117	93	21	3	3 females-----	1	-	-	1
All born alive-----	109	85	21	3	All born alive-----	1	-	-	1
2 born alive-----	4	4	-	-	2 born alive-----	-	-	-	-
1 born alive-----	3	3	-	-	1 born alive-----	-	-	-	-
All born dead-----	1	1	-	-	All born dead-----	-	-	-	-
Alabama-----	5	2	3	-	Arkansas-----	6	2	4	-
All born alive-----	5	2	3	-	All born alive-----	6	2	4	-
2 born alive-----	-	-	-	-	2 born alive-----	-	-	-	-
1 born alive-----	-	-	-	-	1 born alive-----	-	-	-	-
All born dead-----	-	-	-	-	All born dead-----	-	-	-	-
3 males-----	3	1	2	-	3 males-----	-	-	-	-
All born alive-----	3	1	2	-	All born alive-----	-	-	-	-
2 born alive-----	-	-	-	-	2 born alive-----	-	-	-	-
1 born alive-----	-	-	-	-	1 born alive-----	-	-	-	-
All born dead-----	-	-	-	-	All born dead-----	-	-	-	-
2 males, 1 female--	-	-	-	-	2 males, 1 female--	2	-	2	-
All born alive-----	-	-	-	-	All born alive-----	2	-	2	-
2 born alive:					2 born alive:				
1 male, 1 female---	-	-	-	-	1 male, 1 female---	-	-	-	-
2 males-----	-	-	-	-	2 males-----	-	-	-	-
1 born alive—Male---	-	-	-	-	1 born alive—Male---	-	-	-	-
Female-----	-	-	-	-	Female-----	-	-	-	-
All born dead-----	-	-	-	-	All born dead-----	-	-	-	-
1 male, 2 females--	1	-	1	-	1 male, 2 females--	-	-	-	-
All born alive-----	1	-	1	-	All born alive-----	-	-	-	-
2 born alive:					2 born alive:				
1 male, 1 female---	-	-	-	-	1 male, 1 female---	-	-	-	-
2 females-----	-	-	-	-	2 females-----	-	-	-	-
1 born alive—Male---	-	-	-	-	1 born alive—Male---	-	-	-	-
Female-----	-	-	-	-	Female-----	-	-	-	-
All born dead-----	-	-	-	-	All born dead-----	-	-	-	-
3 females-----	1	1	-	-	3 females-----	4	2	2	-
All born alive-----	1	1	-	-	All born alive-----	4	2	2	-
2 born alive-----	-	-	-	-	2 born alive-----	-	-	-	-
1 born alive-----	-	-	-	-	1 born alive-----	-	-	-	-
All born dead-----	-	-	-	-	All born dead-----	-	-	-	-

²Excludes 4 cases of triplets in which only 2 mates were reported; of these, there were 2 cases with 2 born alive and 2 cases with 2 born dead. Excludes 11 cases of triplets in which only 1 mate was reported; of these, 3 were born alive and 8 were born dead.

NOTE: Cases of multiple births by sex composition may not sum to the total. The totals include cases with sex composition unknown. Alaska, Idaho, and Wyoming are not included because no triplet births were recorded in these States.

Table 2. Cases of plural births, by race, live-birth status, and sex: United States and each State, 1964—Con.

Plurality, State, live-birth status, and sex	Total	White	Negro	Other	Plurality, State, live-birth status, and sex	Total	White	Negro	Other
<u>Triplets</u>					<u>Triplets</u>				
California-----	43	35	7	1	Connecticut-----	5	5	-	-
All born alive-----	40	32	7	1	All born alive-----	3	3	-	-
2 born alive-----	3	3	-	-	2 born alive-----	-	-	-	-
1 born alive-----	-	-	-	-	1 born alive-----	2	2	-	-
All born dead-----	-	-	-	-	All born dead-----	-	-	-	-
3 males-----	7	6	1	-	3 males-----	1	1	-	-
All born alive-----	7	6	1	-	All born alive-----	-	-	-	-
2 born alive-----	-	-	-	-	2 born alive-----	-	-	-	-
1 born alive-----	-	-	-	-	1 born alive-----	1	1	-	-
All born dead-----	-	-	-	-	All born dead-----	-	-	-	-
2 males, 1 female--	14	9	4	1	2 males, 1 female--	-	-	-	-
All born alive-----	13	8	4	1	All born alive-----	-	-	-	-
2 born alive:					2 born alive:				
1 male, 1 female---	1	1	-	-	1 male, 1 female---	-	-	-	-
2 males-----	-	-	-	-	2 males-----	-	-	-	-
1 born alive—Male--	-	-	-	-	1 born alive—Male--	-	-	-	-
Female-----	-	-	-	-	Female-----	-	-	-	-
All born dead-----	-	-	-	-	All born dead-----	-	-	-	-
1 male, 2 females--	9	8	1	-	1 male, 2 females--	2	2	-	-
All born alive-----	8	7	1	-	All born alive-----	2	2	-	-
2 born alive:					2 born alive:				
1 male, 1 female---	1	1	-	-	1 male, 1 female---	-	-	-	-
2 females-----	-	-	-	-	2 females-----	-	-	-	-
1 born alive—Male--	-	-	-	-	1 born alive—Male--	-	-	-	-
Female-----	-	-	-	-	Female-----	-	-	-	-
All born dead-----	-	-	-	-	All born dead-----	-	-	-	-
3 females-----	12	11	1	-	3 females-----	2	2	-	-
All born alive-----	12	11	1	-	All born alive-----	1	1	-	-
2 born alive-----	-	-	-	-	2 born alive-----	-	-	-	-
1 born alive-----	-	-	-	-	1 born alive-----	1	1	-	-
All born dead-----	-	-	-	-	All born dead-----	-	-	-	-
Colorado-----	3	2	-	1	Delaware-----	2	1	1	-
All born alive-----	3	2	-	1	All born alive-----	2	1	1	-
2 born alive-----	-	-	-	-	2 born alive-----	-	-	-	-
1 born alive-----	-	-	-	-	1 born alive-----	-	-	-	-
All born dead-----	-	-	-	-	All born dead-----	-	-	-	-
3 males-----	-	-	-	-	3 males-----	-	-	-	-
All born alive-----	-	-	-	-	All born alive-----	-	-	-	-
2 born alive-----	-	-	-	-	2 born alive-----	-	-	-	-
1 born alive-----	-	-	-	-	1 born alive-----	-	-	-	-
All born dead-----	-	-	-	-	All born dead-----	-	-	-	-
2 males, 1 female--	-	-	-	-	2 males, 1 female--	1	-	1	-
All born alive-----	-	-	-	-	All born alive-----	1	-	1	-
2 born alive:					2 born alive:				
1 male, 1 female---	-	-	-	-	1 male, 1 female---	-	-	-	-
2 males-----	-	-	-	-	2 males-----	-	-	-	-
1 born alive—Male--	-	-	-	-	1 born alive—Male--	-	-	-	-
Female-----	-	-	-	-	Female-----	-	-	-	-
All born dead-----	-	-	-	-	All born dead-----	-	-	-	-
1 male, 2 females--	2	1	-	1	1 male, 2 females--	1	1	-	-
All born alive-----	2	1	-	1	All born alive-----	1	1	-	-
2 born alive:					2 born alive:				
1 male, 1 female---	-	-	-	-	1 male, 1 female---	-	-	-	-
2 females-----	-	-	-	-	2 females-----	-	-	-	-
1 born alive—Male--	-	-	-	-	1 born alive—Male--	-	-	-	-
Female-----	-	-	-	-	Female-----	-	-	-	-
All born dead-----	-	-	-	-	All born dead-----	-	-	-	-
3 females-----	1	1	-	-	3 females-----	-	-	-	-
All born alive-----	1	1	-	-	All born alive-----	-	-	-	-
2 born alive-----	-	-	-	-	2 born alive-----	-	-	-	-
1 born alive-----	-	-	-	-	1 born alive-----	-	-	-	-
All born dead-----	-	-	-	-	All born dead-----	-	-	-	-

Table 2. Cases of plural births, by race, live-birth status, and sex: United States and each State, 1964--Con.

Plurality, State, live-birth status, and sex	Total	White	Negro	Other	Plurality, State, live-birth status, and sex	Total	White	Negro	Other
<u>Triplets</u>					<u>Triplets</u>				
Dist. of Col.-----	2	-	2	-	Georgia-----	8	-	8	-
All born alive-----	2	-	2	-	All born alive-----	7	-	7	-
2 born alive-----	-	-	-	-	2 born alive-----	-	-	-	-
1 born alive-----	-	-	-	-	1 born alive-----	1	-	1	-
All born dead-----	-	-	-	-	All born dead-----	-	-	-	-
3 males-----	-	-	-	-	3 males-----	1	-	1	-
All born alive-----	-	-	-	-	All born alive-----	-	-	-	-
2 born alive-----	-	-	-	-	2 born alive-----	-	-	-	-
1 born alive-----	-	-	-	-	1 born alive-----	1	-	1	-
All born dead-----	-	-	-	-	All born dead-----	-	-	-	-
2 males, 1 female--	1	-	1	-	2 males, 1 female--	2	-	2	-
All born alive-----	1	-	1	-	All born alive-----	2	-	2	-
2 born alive:	-	-	-	-	2 born alive:	-	-	-	-
1 male, 1 female---	-	-	-	-	1 male, 1 female---	-	-	-	-
2 males-----	-	-	-	-	2 males-----	-	-	-	-
1 born alive--Male--	-	-	-	-	1 born alive--Male--	-	-	-	-
Female-----	-	-	-	-	Female-----	-	-	-	-
All born dead-----	-	-	-	-	All born dead-----	-	-	-	-
1 male, 2 females--	1	-	1	-	1 male, 2 females--	3	-	3	-
All born alive-----	1	-	1	-	All born alive-----	3	-	3	-
2 born alive:	-	-	-	-	2 born alive:	-	-	-	-
1 male, 1 female---	-	-	-	-	1 male, 1 female---	-	-	-	-
2 females-----	-	-	-	-	2 females-----	-	-	-	-
1 born alive--Male--	-	-	-	-	1 born alive--Male--	-	-	-	-
Female-----	-	-	-	-	Female-----	-	-	-	-
All born dead-----	-	-	-	-	All born dead-----	-	-	-	-
3 females-----	-	-	-	-	3 females-----	2	-	2	-
All born alive-----	-	-	-	-	All born alive-----	2	-	2	-
2 born alive-----	-	-	-	-	2 born alive-----	-	-	-	-
1 born alive-----	-	-	-	-	1 born alive-----	-	-	-	-
All born dead-----	-	-	-	-	All born dead-----	-	-	-	-
Florida-----	4	1	3	-	Hawaii-----	2	-	-	2
All born alive-----	4	1	3	-	All born alive-----	1	-	-	1
2 born alive-----	-	-	-	-	2 born alive-----	1	-	-	1
1 born alive-----	-	-	-	-	1 born alive-----	-	-	-	-
All born dead-----	-	-	-	-	All born dead-----	-	-	-	-
3 males-----	2	1	1	-	3 males-----	-	-	-	-
All born alive-----	2	1	1	-	All born alive-----	-	-	-	-
2 born alive-----	-	-	-	-	2 born alive-----	-	-	-	-
1 born alive-----	-	-	-	-	1 born alive-----	-	-	-	-
All born dead-----	-	-	-	-	All born dead-----	-	-	-	-
2 males, 1 female--	1	-	1	-	2 males, 1 female--	-	-	-	-
All born alive-----	1	-	1	-	All born alive-----	-	-	-	-
2 born alive:	-	-	-	-	2 born alive:	-	-	-	-
1 male, 1 female---	-	-	-	-	1 male, 1 female---	-	-	-	-
2 males-----	-	-	-	-	2 males-----	-	-	-	-
1 born alive--Male--	-	-	-	-	1 born alive--Male--	-	-	-	-
Female-----	-	-	-	-	Female-----	-	-	-	-
All born dead-----	-	-	-	-	All born dead-----	-	-	-	-
1 male, 2 females--	-	-	-	-	1 male, 2 females--	-	-	-	-
All born alive-----	-	-	-	-	All born alive-----	-	-	-	-
2 born alive:	-	-	-	-	2 born alive:	-	-	-	-
1 male, 1 female---	-	-	-	-	1 male, 1 female---	-	-	-	-
2 females-----	-	-	-	-	2 females-----	-	-	-	-
1 born alive--Male--	-	-	-	-	1 born alive--Male--	-	-	-	-
Female-----	-	-	-	-	Female-----	-	-	-	-
All born dead-----	-	-	-	-	All born dead-----	-	-	-	-
3 females-----	1	-	1	-	3 females-----	1	-	-	1
All born alive-----	1	-	1	-	All born alive-----	1	-	-	1
2 born alive-----	-	-	-	-	2 born alive-----	-	-	-	-
1 born alive-----	-	-	-	-	1 born alive-----	-	-	-	-
All born dead-----	-	-	-	-	All born dead-----	-	-	-	-

Table 2. Cases of plural births, by race, live-birth status, and sex: United States and each State, 1964—Con.

Plurality, State, live-birth status, and sex	Total	White	Negro	Other	Plurality, State, live-birth status, and sex	Total	White	Negro	Other
<u>Triplets</u>					<u>Triplets</u>				
Illinois-----	27	21	6	-	Iowa-----	2	2	-	-
All born alive-----	26	21	5	-	All born alive-----	2	2	-	-
2 born alive-----	-	-	-	-	2 born alive-----	-	-	-	-
1 born alive-----	-	-	-	-	1 born alive-----	-	-	-	-
All born dead-----	1	-	1	-	All born dead-----	-	-	-	-
3 males-----	6	5	1	-	3 males-----	1	1	-	-
All born alive-----	6	5	1	-	All born alive-----	1	1	-	-
2 born alive-----	-	-	-	-	2 born alive-----	-	-	-	-
1 born alive-----	-	-	-	-	1 born alive-----	-	-	-	-
All born dead-----	-	-	-	-	All born dead-----	-	-	-	-
2 males, 1 female--	10	8	2	-	2 males, 1 female--	-	-	-	-
All born alive-----	9	8	1	-	All born alive-----	-	-	-	-
2 born alive:	-	-	-	-	2 born alive:	-	-	-	-
1 male, 1 female---	-	-	-	-	1 male, 1 female---	-	-	-	-
2 males-----	-	-	-	-	2 males-----	-	-	-	-
1 born alive--Male---	-	-	-	-	1 born alive--Male---	-	-	-	-
Female-----	-	-	-	-	Female-----	-	-	-	-
All born dead-----	1	-	1	-	All born dead-----	-	-	-	-
1 male, 2 females--	5	3	2	-	1 male, 2 females--	-	-	-	-
All born alive-----	5	3	2	-	All born alive-----	-	-	-	-
2 born alive:	-	-	-	-	2 born alive:	-	-	-	-
1 male, 1 female---	-	-	-	-	1 male, 1 female---	-	-	-	-
2 females-----	-	-	-	-	2 females-----	-	-	-	-
1 born alive--Male---	-	-	-	-	1 born alive--Male---	-	-	-	-
Female-----	-	-	-	-	Female-----	-	-	-	-
All born dead-----	-	-	-	-	All born dead-----	-	-	-	-
3 females-----	6	5	1	-	3 females-----	1	1	-	-
All born alive-----	6	5	1	-	All born alive-----	1	1	-	-
2 born alive-----	-	-	-	-	2 born alive-----	-	-	-	-
1 born alive-----	-	-	-	-	1 born alive-----	-	-	-	-
All born dead-----	-	-	-	-	All born dead-----	-	-	-	-
Indiana-----	6	4	2	-	Kansas-----	2	2	-	-
All born alive-----	6	4	2	-	All born alive-----	2	2	-	-
2 born alive-----	-	-	-	-	2 born alive-----	-	-	-	-
1 born alive-----	-	-	-	-	1 born alive-----	-	-	-	-
All born dead-----	-	-	-	-	All born dead-----	-	-	-	-
3 males-----	1	-	1	-	3 males-----	-	-	-	-
All born alive-----	1	-	1	-	All born alive-----	-	-	-	-
2 born alive-----	-	-	-	-	2 born alive-----	-	-	-	-
1 born alive-----	-	-	-	-	1 born alive-----	-	-	-	-
All born dead-----	-	-	-	-	All born dead-----	-	-	-	-
2 males, 1 female--	1	1	-	-	2 males, 1 female--	-	-	-	-
All born alive-----	1	1	-	-	All born alive-----	-	-	-	-
2 born alive:	-	-	-	-	2 born alive:	-	-	-	-
1 male, 1 female---	-	-	-	-	1 male, 1 female---	-	-	-	-
2 males-----	-	-	-	-	2 males-----	-	-	-	-
1 born alive--Male---	-	-	-	-	1 born alive--Male---	-	-	-	-
Female-----	-	-	-	-	Female-----	-	-	-	-
All born dead-----	-	-	-	-	All born dead-----	-	-	-	-
1 male, 2 females--	3	2	1	-	1 male, 2 females--	1	1	-	-
All born alive-----	3	2	1	-	All born alive-----	1	1	-	-
2 born alive:	-	-	-	-	2 born alive:	-	-	-	-
1 male, 1 female---	-	-	-	-	1 male, 1 female---	-	-	-	-
2 females-----	-	-	-	-	2 females-----	-	-	-	-
1 born alive--Male---	-	-	-	-	1 born alive--Male---	-	-	-	-
Female-----	-	-	-	-	Female-----	-	-	-	-
All born dead-----	-	-	-	-	All born dead-----	-	-	-	-
3 females-----	1	1	-	-	3 females-----	1	1	-	-
All born alive-----	1	1	-	-	All born alive-----	1	1	-	-
2 born alive-----	-	-	-	-	2 born alive-----	-	-	-	-
1 born alive-----	-	-	-	-	1 born alive-----	-	-	-	-
All born dead-----	-	-	-	-	All born dead-----	-	-	-	-

Table 2. Cases of plural births, by race, live-birth status, and sex: United States and each State, 1964--Con.

Plurality, State, live-birth status, and sex	Total	White	Negro	Other	Plurality, State, live-birth status, and sex	Total	White	Negro	Other
<u>Triplets</u>					<u>Triplets</u>				
Kentucky-----	10	8	2	-	Maine-----	2	2	-	-
All born alive-----	8	6	2	-	All born alive-----	1	1	-	-
2 born alive-----	1	1	-	-	2 born alive-----	-	-	-	-
1 born alive-----	1	1	-	-	1 born alive-----	1	1	-	-
All born dead-----	-	-	-	-	All born dead-----	-	-	-	-
3 males-----	3	1	2	-	3 males-----	-	-	-	-
All born alive-----	3	1	2	-	All born alive-----	-	-	-	-
2 born alive-----	-	-	-	-	2 born alive-----	-	-	-	-
1 born alive-----	-	-	-	-	1 born alive-----	-	-	-	-
All born dead-----	-	-	-	-	All born dead-----	-	-	-	-
2 males, 1 female--	-	-	-	-	2 males, 1 female--	-	-	-	-
All born alive-----	-	-	-	-	All born alive-----	-	-	-	-
2 born alive:	-	-	-	-	2 born alive:	-	-	-	-
1 male, 1 female--	-	-	-	-	1 male, 1 female--	-	-	-	-
2 males-----	-	-	-	-	2 males-----	-	-	-	-
1 born alive--Male--	-	-	-	-	1 born alive--Male--	-	-	-	-
Female-----	-	-	-	-	Female-----	-	-	-	-
All born dead-----	-	-	-	-	All born dead-----	-	-	-	-
1 male, 2 females--	5	5	-	-	1 male, 2 females--	1	1	-	-
All born alive-----	3	3	-	-	All born alive-----	1	1	-	-
2 born alive:	-	-	-	-	2 born alive:	-	-	-	-
1 male, 1 female--	1	1	-	-	1 male, 1 female--	-	-	-	-
2 females-----	-	-	-	-	2 females-----	-	-	-	-
1 born alive--Male--	1	1	-	-	1 born alive--Male--	-	-	-	-
Female-----	-	-	-	-	Female-----	-	-	-	-
All born dead-----	-	-	-	-	All born dead-----	-	-	-	-
3 females-----	2	2	-	-	3 females-----	1	1	-	-
All born alive-----	2	2	-	-	All born alive-----	-	-	-	-
2 born alive-----	-	-	-	-	2 born alive-----	-	-	-	-
1 born alive-----	-	-	-	-	1 born alive-----	1	1	-	-
All born dead-----	-	-	-	-	All born dead-----	-	-	-	-
Louisiana-----	14	5	9	-	Maryland-----	9	6	3	-
All born alive-----	12	5	7	-	All born alive-----	7	4	3	-
2 born alive-----	-	-	-	-	2 born alive-----	1	1	-	-
1 born alive-----	2	-	2	-	1 born alive-----	-	-	-	-
All born dead-----	-	-	-	-	All born dead-----	1	1	-	-
3 males-----	6	1	5	-	3 males-----	1	1	-	-
All born alive-----	4	1	3	-	All born alive-----	1	1	-	-
2 born alive-----	-	-	-	-	2 born alive-----	-	-	-	-
1 born alive-----	2	-	2	-	1 born alive-----	-	-	-	-
All born dead-----	-	-	-	-	All born dead-----	-	-	-	-
2 males, 1 female--	4	1	3	-	2 males, 1 female--	3	2	1	-
All born alive-----	4	1	3	-	All born alive-----	2	1	1	-
2 born alive:	-	-	-	-	2 born alive:	-	-	-	-
1 male, 1 female--	-	-	-	-	1 male, 1 female--	1	1	-	-
2 males-----	-	-	-	-	2 males-----	-	-	-	-
1 born alive--Male--	-	-	-	-	1 born alive--Male--	-	-	-	-
Female-----	-	-	-	-	Female-----	-	-	-	-
All born dead-----	-	-	-	-	All born dead-----	-	-	-	-
1 male, 2 females--	2	1	1	-	1 male, 2 females--	2	2	-	-
All born alive-----	2	1	1	-	All born alive-----	1	1	-	-
2 born alive:	-	-	-	-	2 born alive:	-	-	-	-
1 male, 1 female--	-	-	-	-	1 male, 1 female--	-	-	-	-
2 females-----	-	-	-	-	2 females-----	-	-	-	-
1 born alive--Male--	-	-	-	-	1 born alive--Male--	-	-	-	-
Female-----	-	-	-	-	Female-----	-	-	-	-
All born dead-----	-	-	-	-	All born dead-----	1	1	-	-
3 females-----	2	2	-	-	3 females-----	3	1	2	-
All born alive-----	2	2	-	-	All born alive-----	3	1	2	-
2 born alive-----	-	-	-	-	2 born alive-----	-	-	-	-
1 born alive-----	-	-	-	-	1 born alive-----	-	-	-	-
All born dead-----	-	-	-	-	All born dead-----	-	-	-	-

Table 2. Cases of plural births, by race, live-birth status, and sex: United States and each State, 1964--Con.

Plurality, State, live-birth status, and sex	Total	White	Negro	Other	Plurality, State, live-birth status, and sex	Total	White	Negro	Other
<u>Triplets</u>					<u>Triplets</u>				
Massachusetts----	7	6	-	1	Minnesota-----	6	5	-	1
All born alive-----	7	6	-	1	All born alive-----	6	5	-	1
2 born alive-----	-	-	-	-	2 born alive-----	-	-	-	-
1 born alive-----	-	-	-	-	1 born alive-----	-	-	-	-
All born dead-----	-	-	-	-	All born dead-----	-	-	-	-
3 males-----	2	2	-	-	3 males-----	-	-	-	-
All born alive-----	2	2	-	-	All born alive-----	-	-	-	-
2 born alive-----	-	-	-	-	2 born alive-----	-	-	-	-
1 born alive-----	-	-	-	-	1 born alive-----	-	-	-	-
All born dead-----	-	-	-	-	All born dead-----	-	-	-	-
2 males, 1 female--	1	1	-	-	2 males, 1 female--	-	-	-	-
All born alive-----	1	1	-	-	All born alive-----	-	-	-	-
2 born alive:	-	-	-	-	2 born alive:	-	-	-	-
1 male, 1 female---	-	-	-	-	1 male, 1 female---	-	-	-	-
2 males-----	-	-	-	-	2 males-----	-	-	-	-
1 born alive--Male--	-	-	-	-	1 born alive--Male--	-	-	-	-
Female-----	-	-	-	-	Female-----	-	-	-	-
All born dead-----	-	-	-	-	All born dead-----	-	-	-	-
1 male, 2 females--	1	1	-	-	1 male, 2 females--	2	1	-	1
All born alive-----	1	1	-	-	All born alive-----	2	1	-	1
2 born alive:	-	-	-	-	2 born alive:	-	-	-	-
1 male, 1 female---	-	-	-	-	1 male, 1 female---	-	-	-	-
2 females-----	-	-	-	-	2 females-----	-	-	-	-
1 born alive--Male--	-	-	-	-	1 born alive--Male--	-	-	-	-
Female-----	-	-	-	-	Female-----	-	-	-	-
All born dead-----	-	-	-	-	All born dead-----	-	-	-	-
3 females-----	3	2	-	1	3 females-----	4	4	-	-
All born alive-----	3	2	-	1	All born alive-----	4	4	-	-
2 born alive-----	-	-	-	-	2 born alive-----	-	-	-	-
1 born alive-----	-	-	-	-	1 born alive-----	-	-	-	-
All born dead-----	-	-	-	-	All born dead-----	-	-	-	-
Michigan-----	21	17	4	-	Mississippi-----	4	1	3	-
All born alive-----	21	17	4	-	All born alive-----	2	-	2	-
2 born alive-----	-	-	-	-	2 born alive-----	-	-	-	-
1 born alive-----	-	-	-	-	1 born alive-----	-	-	-	-
All born dead-----	-	-	-	-	All born dead-----	2	1	1	-
3 males-----	5	4	1	-	3 males-----	1	-	1	-
All born alive-----	5	4	1	-	All born alive-----	-	-	-	-
2 born alive-----	-	-	-	-	2 born alive-----	-	-	-	-
1 born alive-----	-	-	-	-	1 born alive-----	-	-	-	-
All born dead-----	-	-	-	-	All born dead-----	1	-	1	-
2 males, 1 female--	3	2	1	-	2 males, 1 female--	-	-	-	-
All born alive-----	3	2	1	-	All born alive-----	-	-	-	-
2 born alive:	-	-	-	-	2 born alive:	-	-	-	-
1 male, 1 female---	-	-	-	-	1 male, 1 female---	-	-	-	-
2 males-----	-	-	-	-	2 males-----	-	-	-	-
1 born alive--Male--	-	-	-	-	1 born alive--Male--	-	-	-	-
Female-----	-	-	-	-	Female-----	-	-	-	-
All born dead-----	-	-	-	-	All born dead-----	-	-	-	-
1 male, 2 females--	4	3	1	-	1 male, 2 females--	1	-	1	-
All born alive-----	4	3	1	-	All born alive-----	1	-	1	-
2 born alive:	-	-	-	-	2 born alive:	-	-	-	-
1 male, 1 female---	-	-	-	-	1 male, 1 female---	-	-	-	-
2 females-----	-	-	-	-	2 females-----	-	-	-	-
1 born alive--Male--	-	-	-	-	1 born alive--Male--	-	-	-	-
Female-----	-	-	-	-	Female-----	-	-	-	-
All born dead-----	-	-	-	-	All born dead-----	-	-	-	-
3 females-----	9	8	1	-	3 females-----	2	1	1	-
All born alive-----	9	8	1	-	All born alive-----	1	-	1	-
2 born alive-----	-	-	-	-	2 born alive-----	-	-	-	-
1 born alive-----	-	-	-	-	1 born alive-----	-	-	-	-
All born dead-----	-	-	-	-	All born dead-----	1	1	-	-

Table 2. Cases of plural births, by race, live-birth status, and sex: United States and each State, 1964—Con.

Plurality, State, live-birth status, and sex	Total	White	Negro	Other	Plurality, State, live-birth status, and sex	Total	White	Negro	Other
<u>Triplets</u>					<u>Triplets</u>				
Missouri-----	12	6	6	-	Nebraska-----	3	3	-	-
All born alive-----	11	6	5	-	All born alive-----	3	3	-	-
2 born alive-----	1	-	1	-	2 born alive-----	-	-	-	-
1 born alive-----	-	-	-	-	1 born alive-----	-	-	-	-
All born dead-----	-	-	-	-	All born dead-----	-	-	-	-
3 males-----	-	-	-	-	3 males-----	1	1	-	-
All born alive-----	-	-	-	-	All born alive-----	1	1	-	-
2 born alive-----	-	-	-	-	2 born alive-----	-	-	-	-
1 born alive-----	-	-	-	-	1 born alive-----	-	-	-	-
All born dead-----	-	-	-	-	All born dead-----	-	-	-	-
2 males, 1 female--	1	-	1	-	2 males, 1 female--	2	2	-	-
All born alive-----	-	-	-	-	All born alive-----	2	2	-	-
2 born alive:	-	-	-	-	2 born alive:	-	-	-	-
1 male, 1 female---	1	-	1	-	1 male, 1 female---	-	-	-	-
2 males-----	-	-	-	-	2 males-----	-	-	-	-
1 born alive—Male--	-	-	-	-	1 born alive—Male--	-	-	-	-
Female-----	-	-	-	-	Female-----	-	-	-	-
All born dead-----	-	-	-	-	All born dead-----	-	-	-	-
1 male, 2 females--	4	2	2	-	1 male, 2 females--	-	-	-	-
All born alive-----	4	2	2	-	All born alive-----	-	-	-	-
2 born alive:	-	-	-	-	2 born alive:	-	-	-	-
1 male, 1 female---	-	-	-	-	1 male, 1 female---	-	-	-	-
2 females-----	-	-	-	-	2 females-----	-	-	-	-
1 born alive—Male--	-	-	-	-	1 born alive—Male--	-	-	-	-
Female-----	-	-	-	-	Female-----	-	-	-	-
All born dead-----	-	-	-	-	All born dead-----	-	-	-	-
3 females-----	7	4	3	-	3 females-----	-	-	-	-
All born alive-----	7	4	3	-	All born alive-----	-	-	-	-
2 born alive-----	-	-	-	-	2 born alive-----	-	-	-	-
1 born alive-----	-	-	-	-	1 born alive-----	-	-	-	-
All born dead-----	-	-	-	-	All born dead-----	-	-	-	-
Montana-----	2	2	-	-	Nevada-----	2	1	-	1
All born alive-----	1	1	-	-	All born alive-----	2	1	-	1
2 born alive-----	-	-	-	-	2 born alive-----	-	-	-	-
1 born alive-----	1	1	-	-	1 born alive-----	-	-	-	-
All born dead-----	-	-	-	-	All born dead-----	-	-	-	-
3 males-----	-	-	-	-	3 males-----	1	-	-	1
All born alive-----	-	-	-	-	All born alive-----	1	-	-	1
2 born alive-----	-	-	-	-	2 born alive-----	-	-	-	-
1 born alive-----	-	-	-	-	1 born alive-----	-	-	-	-
All born dead-----	-	-	-	-	All born dead-----	-	-	-	-
2 males, 1 female--	1	1	-	-	2 males, 1 female--	-	-	-	-
All born alive-----	1	1	-	-	All born alive-----	-	-	-	-
2 born alive:	-	-	-	-	2 born alive:	-	-	-	-
1 male, 1 female---	-	-	-	-	1 male, 1 female---	-	-	-	-
2 males-----	-	-	-	-	2 males-----	-	-	-	-
1 born alive—Male--	-	-	-	-	1 born alive—Male--	-	-	-	-
Female-----	-	-	-	-	Female-----	-	-	-	-
All born dead-----	-	-	-	-	All born dead-----	-	-	-	-
1 male, 2 females--	-	-	-	-	1 male, 2 females--	-	-	-	-
All born alive-----	-	-	-	-	All born alive-----	-	-	-	-
2 born alive:	-	-	-	-	2 born alive:	-	-	-	-
1 male, 1 female---	-	-	-	-	1 male, 1 female---	-	-	-	-
2 females-----	-	-	-	-	2 females-----	-	-	-	-
1 born alive—Male--	-	-	-	-	1 born alive—Male--	-	-	-	-
Female-----	-	-	-	-	Female-----	-	-	-	-
All born dead-----	-	-	-	-	All born dead-----	-	-	-	-
3 females-----	1	1	-	-	3 females-----	1	1	-	-
All born alive-----	-	-	-	-	All born alive-----	1	1	-	-
2 born alive-----	-	-	-	-	2 born alive-----	-	-	-	-
1 born alive-----	1	1	-	-	1 born alive-----	-	-	-	-
All born dead-----	-	-	-	-	All born dead-----	-	-	-	-

Table 2. Cases of plural births, by race, live-birth status, and sex: United States and each State, 1964—Con.

Plurality, State, live-birth status, and sex	Total	White	Negro	Other	Plurality, State, live-birth status, and sex	Total	White	Negro	Other
<u>Triplets</u>					<u>Triplets</u>				
New Hampshire-----	3	3	-	-	New York-----	27	20	7	-
All born alive-----	3	3	-	-	All born alive-----	25	19	6	-
2 born alive-----	-	-	-	-	2 born alive-----	-	-	-	-
1 born alive-----	-	-	-	-	1 born alive-----	1	-	1	-
All born dead-----	-	-	-	-	All born dead-----	1	1	-	-
3 males-----	1	1	-	-	3 males-----	10	5	5	-
All born alive-----	1	1	-	-	All born alive-----	9	5	4	-
2 born alive-----	-	-	-	-	2 born alive-----	-	-	-	-
1 born alive-----	-	-	-	-	1 born alive-----	1	-	1	-
All born dead-----	-	-	-	-	All born dead-----	-	-	-	-
2 males, 1 female--	-	-	-	-	2 males, 1 female--	5	4	1	-
All born alive-----	-	-	-	-	All born alive-----	5	4	1	-
2 born alive:	-	-	-	-	2 born alive:	-	-	-	-
1 male, 1 female---	-	-	-	-	1 male, 1 female---	-	-	-	-
2 males-----	-	-	-	-	2 males-----	-	-	-	-
1 born alive—Male---	-	-	-	-	1 born alive—Male---	-	-	-	-
Female-----	-	-	-	-	Female-----	-	-	-	-
All born dead-----	-	-	-	-	All born dead-----	-	-	-	-
1 male, 2 females--	2	2	-	-	1 male, 2 females--	5	4	1	-
All born alive-----	2	2	-	-	All born alive-----	5	4	1	-
2 born alive:	-	-	-	-	2 born alive:	-	-	-	-
1 male, 1 female---	-	-	-	-	1 male, 1 female---	-	-	-	-
2 females-----	-	-	-	-	2 females-----	-	-	-	-
1 born alive—Male---	-	-	-	-	1 born alive—Male---	-	-	-	-
Female-----	-	-	-	-	Female-----	-	-	-	-
All born dead-----	-	-	-	-	All born dead-----	-	-	-	-
3 females-----	-	-	-	-	3 females-----	6	6	-	-
All born alive-----	-	-	-	-	All born alive-----	6	6	-	-
2 born alive-----	-	-	-	-	2 born alive-----	-	-	-	-
1 born alive-----	-	-	-	-	1 born alive-----	-	-	-	-
All born dead-----	-	-	-	-	All born dead-----	-	-	-	-
New Jersey-----	26	25	1	-	North Carolina---	9	2	5	2
All born alive-----	24	23	1	-	All born alive-----	9	2	5	2
2 born alive-----	-	-	-	-	2 born alive-----	-	-	-	-
1 born alive-----	-	-	-	-	1 born alive-----	-	-	-	-
All born dead-----	2	2	-	-	All born dead-----	-	-	-	-
3 males-----	8	8	-	-	3 males-----	5	-	3	2
All born alive-----	7	7	-	-	All born alive-----	5	-	3	2
2 born alive-----	-	-	-	-	2 born alive-----	-	-	-	-
1 born alive-----	-	-	-	-	1 born alive-----	-	-	-	-
All born dead-----	1	1	-	-	All born dead-----	-	-	-	-
2 males, 1 female--	8	8	-	-	2 males, 1 female--	-	-	-	-
All born alive-----	7	7	-	-	All born alive-----	-	-	-	-
2 born alive:	-	-	-	-	2 born alive:	-	-	-	-
1 male, 1 female---	-	-	-	-	1 male, 1 female---	-	-	-	-
2 males-----	-	-	-	-	2 males-----	-	-	-	-
1 born alive—Male---	-	-	-	-	1 born alive—Male---	-	-	-	-
Female-----	-	-	-	-	Female-----	-	-	-	-
All born dead-----	1	1	-	-	All born dead-----	-	-	-	-
1 male, 2 females--	5	5	-	-	1 male, 2 females--	-	-	-	-
All born alive-----	5	5	-	-	All born alive-----	-	-	-	-
2 born alive:	-	-	-	-	2 born alive:	-	-	-	-
1 male, 1 female---	-	-	-	-	1 male, 1 female---	-	-	-	-
2 females-----	-	-	-	-	2 females-----	-	-	-	-
1 born alive—Male---	-	-	-	-	1 born alive—Male---	-	-	-	-
Female-----	-	-	-	-	Female-----	-	-	-	-
All born dead-----	-	-	-	-	All born dead-----	-	-	-	-
3 females-----	5	4	1	-	3 females-----	4	2	2	-
All born alive-----	5	4	1	-	All born alive-----	4	2	2	-
2 born alive-----	-	-	-	-	2 born alive-----	-	-	-	-
1 born alive-----	-	-	-	-	1 born alive-----	-	-	-	-
All born dead-----	-	-	-	-	All born dead-----	-	-	-	-

Table 2. Cases of plural births, by race, live-birth status, and sex: United States and each State, 1964—Con.

Plurality, State, live-birth status, and sex	Total	White	Negro	Other	Plurality, State, live-birth status, and sex	Total	White	Negro	Other
<u>Triplets</u>					<u>Triplets</u>				
Ohio-----	23	20	3	-	Oregon-----	5	5	-	-
All born alive-----	20	17	3	-	All born alive-----	5	5	-	-
2 born alive-----	3	3	-	-	2 born alive-----	-	-	-	-
1 born alive-----	-	-	-	-	1 born alive-----	-	-	-	-
All born dead-----	-	-	-	-	All born dead-----	-	-	-	-
3 males-----	6	6	-	-	3 males-----	2	2	-	-
All born alive-----	5	5	-	-	All born alive-----	2	2	-	-
2 born alive-----	1	1	-	-	2 born alive-----	-	-	-	-
1 born alive-----	-	-	-	-	1 born alive-----	-	-	-	-
All born dead-----	-	-	-	-	All born dead-----	-	-	-	-
2 males, 1 female--	7	7	-	-	2 males, 1 female--	2	2	-	-
All born alive-----	7	7	-	-	All born alive-----	2	2	-	-
2 born alive:	-	-	-	-	2 born alive:	-	-	-	-
1 male, 1 female---	-	-	-	-	1 male, 1 female---	-	-	-	-
2 males-----	-	-	-	-	2 males-----	-	-	-	-
1 born alive—Male---	-	-	-	-	1 born alive—Male---	-	-	-	-
Female-----	-	-	-	-	Female-----	-	-	-	-
All born dead-----	-	-	-	-	All born dead-----	-	-	-	-
1 male, 2 females--	6	4	2	-	1 male, 2 females--	-	-	-	-
All born alive-----	5	3	2	-	All born alive-----	-	-	-	-
2 born alive:	-	-	-	-	2 born alive:	-	-	-	-
1 male, 1 female---	1	1	-	-	1 male, 1 female---	-	-	-	-
2 females-----	-	-	-	-	2 females-----	-	-	-	-
1 born alive—Male---	-	-	-	-	1 born alive—Male---	-	-	-	-
Female-----	-	-	-	-	Female-----	-	-	-	-
All born dead-----	-	-	-	-	All born dead-----	-	-	-	-
3 females-----	4	3	1	-	3 females-----	1	1	-	-
All born alive-----	3	2	1	-	All born alive-----	1	1	-	-
2 born alive-----	1	1	-	-	2 born alive-----	-	-	-	-
1 born alive-----	-	-	-	-	1 born alive-----	-	-	-	-
All born dead-----	-	-	-	-	All born dead-----	-	-	-	-
Oklahoma-----	6	4	1	1	Pennsylvania-----	22	21	1	-
All born alive-----	6	4	1	1	All born alive-----	17	16	1	-
2 born alive-----	-	-	-	-	2 born alive-----	2	2	-	-
1 born alive-----	-	-	-	-	1 born alive-----	2	2	-	-
All born dead-----	-	-	-	-	All born dead-----	1	1	-	-
3 males-----	2	1	-	1	3 males-----	6	6	-	-
All born alive-----	2	1	-	1	All born alive-----	4	4	-	-
2 born alive-----	-	-	-	-	2 born alive-----	1	1	-	-
1 born alive-----	-	-	-	-	1 born alive-----	-	-	-	-
All born dead-----	-	-	-	-	All born dead-----	1	1	-	-
2 males, 1 female--	3	3	-	-	2 males, 1 female--	3	3	-	-
All born alive-----	3	3	-	-	All born alive-----	1	1	-	-
2 born alive:	-	-	-	-	2 born alive:	-	-	-	-
1 male, 1 female---	-	-	-	-	1 male, 1 female---	-	-	-	-
2 males-----	-	-	-	-	2 males-----	-	-	-	-
1 born alive—Male---	-	-	-	-	1 born alive—Male---	-	-	-	-
Female-----	-	-	-	-	Female-----	2	2	-	-
All born dead-----	-	-	-	-	All born dead-----	-	-	-	-
1 male, 2 females--	-	-	-	-	1 male, 2 females--	6	5	1	-
All born alive-----	-	-	-	-	All born alive-----	6	5	1	-
2 born alive:	-	-	-	-	2 born alive:	-	-	-	-
1 male, 1 female---	-	-	-	-	1 male, 1 female---	-	-	-	-
2 females-----	-	-	-	-	2 females-----	-	-	-	-
1 born alive—Male---	-	-	-	-	1 born alive—Male---	-	-	-	-
Female-----	-	-	-	-	Female-----	-	-	-	-
All born dead-----	-	-	-	-	All born dead-----	-	-	-	-
3 females-----	1	-	1	-	3 females-----	7	7	-	-
All born alive-----	1	-	1	-	All born alive-----	6	6	-	-
2 born alive-----	-	-	-	-	2 born alive-----	1	1	-	-
1 born alive-----	-	-	-	-	1 born alive-----	-	-	-	-
All born dead-----	-	-	-	-	All born dead-----	-	-	-	-

Table 2. Cases of plural births, by race, live-birth status, and sex: United States and each State, 1964—Con.

Plurality, State, live-birth status, and sex	Total	White	Negro	Other	Plurality, State, live-birth status, and sex	Total	White	Negro	Other
<u>Triplets</u>					<u>Triplets</u>				
Rhode Island-----	1	1	-	-	South Dakota-----	2	2	-	-
All born alive-----	1	1	-	-	All born alive-----	2	2	-	-
2 born alive-----	-	-	-	-	2 born alive-----	-	-	-	-
1 born alive-----	-	-	-	-	1 born alive-----	-	-	-	-
All born dead-----	-	-	-	-	All born dead-----	-	-	-	-
3 males-----	-	-	-	-	3 males-----	1	1	-	-
All born alive-----	-	-	-	-	All born alive-----	1	1	-	-
2 born alive-----	-	-	-	-	2 born alive-----	-	-	-	-
1 born alive-----	-	-	-	-	1 born alive-----	-	-	-	-
All born dead-----	-	-	-	-	All born dead-----	-	-	-	-
2 males, 1 female--	-	-	-	-	2 males, 1 female---	1	1	-	-
All born alive-----	-	-	-	-	All born alive-----	1	1	-	-
2 born alive:	-	-	-	-	2 born alive:	-	-	-	-
1 male, 1 female---	-	-	-	-	1 male, 1 female---	-	-	-	-
2 males-----	-	-	-	-	2 males-----	-	-	-	-
1 born alive--Male---	-	-	-	-	1 born alive--Male---	-	-	-	-
Female-----	-	-	-	-	Female-----	-	-	-	-
All born dead-----	-	-	-	-	All born dead-----	-	-	-	-
1 male, 2 females--	1	1	-	-	1 male, 2 females---	-	-	-	-
All born alive-----	1	1	-	-	All born alive-----	-	-	-	-
2 born alive:	-	-	-	-	2 born alive:	-	-	-	-
1 male, 1 female---	-	-	-	-	1 male, 1 female---	-	-	-	-
2 females-----	-	-	-	-	2 females-----	-	-	-	-
1 born alive--Male---	-	-	-	-	1 born alive--Male---	-	-	-	-
Female-----	-	-	-	-	Female-----	-	-	-	-
All born dead-----	-	-	-	-	All born dead-----	-	-	-	-
3 females-----	-	-	-	-	3 females-----	-	-	-	-
All born alive-----	-	-	-	-	All born alive-----	-	-	-	-
2 born alive-----	-	-	-	-	2 born alive-----	-	-	-	-
1 born alive-----	-	-	-	-	1 born alive-----	-	-	-	-
All born dead-----	-	-	-	-	All born dead-----	-	-	-	-
South Carolina---	4	3	1	-	Tennessee-----	6	5	1	-
All born alive-----	4	3	1	-	All born alive-----	6	5	1	-
2 born alive-----	-	-	-	-	2 born alive-----	-	-	-	-
1 born alive-----	-	-	-	-	1 born alive-----	-	-	-	-
All born dead-----	-	-	-	-	All born dead-----	-	-	-	-
3 males-----	2	2	-	-	3 males-----	2	2	-	-
All born alive-----	2	2	-	-	All born alive-----	2	2	-	-
2 born alive-----	-	-	-	-	2 born alive-----	-	-	-	-
1 born alive-----	-	-	-	-	1 born alive-----	-	-	-	-
All born dead-----	-	-	-	-	All born dead-----	-	-	-	-
2 males, 1 female--	-	-	-	-	2 males, 1 female---	1	1	-	-
All born alive-----	-	-	-	-	All born alive-----	1	1	-	-
2 born alive:	-	-	-	-	2 born alive:	-	-	-	-
1 male, 1 female---	-	-	-	-	1 male, 1 female---	-	-	-	-
2 males-----	-	-	-	-	2 males-----	-	-	-	-
1 born alive--Male---	-	-	-	-	1 born alive--Male---	-	-	-	-
Female-----	-	-	-	-	Female-----	-	-	-	-
All born dead-----	-	-	-	-	All born dead-----	-	-	-	-
1 male, 2 females--	1	-	1	-	1 male, 2 females---	-	-	-	-
All born alive-----	1	-	1	-	All born alive-----	-	-	-	-
2 born alive:	-	-	-	-	2 born alive:	-	-	-	-
1 male, 1 female---	-	-	-	-	1 male, 1 female---	-	-	-	-
2 females-----	-	-	-	-	2 females-----	-	-	-	-
1 born alive--Male---	-	-	-	-	1 born alive--Male---	-	-	-	-
Female-----	-	-	-	-	Female-----	-	-	-	-
All born dead-----	-	-	-	-	All born dead-----	-	-	-	-
3 females-----	1	1	-	-	3 females-----	3	2	1	-
All born alive-----	1	1	-	-	All born alive-----	3	2	1	-
2 born alive-----	-	-	-	-	2 born alive-----	-	-	-	-
1 born alive-----	-	-	-	-	1 born alive-----	-	-	-	-
All born dead-----	-	-	-	-	All born dead-----	-	-	-	-

Table 2. Cases of plural births, by race, live-birth status, and sex: United States and each State, 1964—Con.

Plurality, State, live-birth status, and sex	Total	White	Negro	Other	Plurality, State, live-birth status, and sex	Total	White	Negro	Other
<u>Triplets</u>					<u>Triplets</u>				
Texas-----	26	19	7	-	Vermont-----	2	2	-	-
All born alive-----	22	15	7	-	All born alive-----	2	2	-	-
2 born alive-----	2	2	-	-	2 born alive-----	-	-	-	-
1 born alive-----	1	1	-	-	1 born alive-----	-	-	-	-
All born dead-----	1	1	-	-	All born dead-----	-	-	-	-
3 males-----	9	5	4	-	3 males-----	-	-	-	-
All born alive-----	8	4	4	-	All born alive-----	-	-	-	-
2 born alive-----	-	-	-	-	2 born alive-----	-	-	-	-
1 born alive-----	1	1	-	-	1 born alive-----	-	-	-	-
All born dead-----	-	-	-	-	All born dead-----	-	-	-	-
2 males, 1 female--	6	5	1	-	2 males, 1 female--	1	1	-	-
All born alive-----	5	4	1	-	All born alive-----	1	1	-	-
2 born alive:					2 born alive:				
1 male, 1 female--	1	1	-	-	1 male, 1 female--	-	-	-	-
2 males-----	-	-	-	-	2 males-----	-	-	-	-
1 born alive--Male--	-	-	-	-	1 born alive--Male--	-	-	-	-
Female-----	-	-	-	-	Female-----	-	-	-	-
All born dead-----	-	-	-	-	All born dead-----	-	-	-	-
1 male, 2 females--	6	5	1	-	1 male, 2 females--	1	1	-	-
All born alive-----	5	4	1	-	All born alive-----	1	1	-	-
2 born alive:					2 born alive:				
1 male, 1 female--	-	-	-	-	1 male, 1 female--	-	-	-	-
2 females-----	-	-	-	-	2 females-----	-	-	-	-
1 born alive--Male--	-	-	-	-	1 born alive--Male--	-	-	-	-
Female-----	-	-	-	-	Female-----	-	-	-	-
All born dead-----	1	1	-	-	All born dead-----	-	-	-	-
3 females-----	5	4	1	-	3 females-----	-	-	-	-
All born alive-----	4	3	1	-	All born alive-----	-	-	-	-
2 born alive-----	1	1	-	-	2 born alive-----	-	-	-	-
1 born alive-----	-	-	-	-	1 born alive-----	-	-	-	-
All born dead-----	-	-	-	-	All born dead-----	-	-	-	-
Utah-----	3	3	-	-	Virginia-----	12	8	4	-
All born alive-----	3	3	-	-	All born alive-----	10	7	3	-
2 born alive-----	-	-	-	-	2 born alive-----	2	1	1	-
1 born alive-----	-	-	-	-	1 born alive-----	-	-	-	-
All born dead-----	-	-	-	-	All born dead-----	-	-	-	-
3 males-----	1	1	-	-	3 males-----	4	3	1	-
All born alive-----	1	1	-	-	All born alive-----	3	2	1	-
2 born alive-----	-	-	-	-	2 born alive-----	1	1	-	-
1 born alive-----	-	-	-	-	1 born alive-----	-	-	-	-
All born dead-----	-	-	-	-	All born dead-----	-	-	-	-
2 males, 1 female--	-	-	-	-	2 males, 1 female--	4	2	2	-
All born alive-----	-	-	-	-	All born alive-----	3	2	1	-
2 born alive:					2 born alive:				
1 male, 1 female--	-	-	-	-	1 male, 1 female--	1	-	1	-
2 males-----	-	-	-	-	2 males-----	-	-	-	-
1 born alive--Male--	-	-	-	-	1 born alive--Male--	-	-	-	-
Female-----	-	-	-	-	Female-----	-	-	-	-
All born dead-----	-	-	-	-	All born dead-----	-	-	-	-
1 male, 2 females--	-	-	-	-	1 male, 2 females--	1	-	1	-
All born alive-----	-	-	-	-	All born alive-----	1	-	1	-
2 born alive:					2 born alive:				
1 male, 1 female--	-	-	-	-	1 male, 1 female--	-	-	-	-
2 females-----	-	-	-	-	2 females-----	-	-	-	-
1 born alive--Male--	-	-	-	-	1 born alive--Male--	-	-	-	-
Female-----	-	-	-	-	Female-----	-	-	-	-
All born dead-----	-	-	-	-	All born dead-----	-	-	-	-
3 females-----	2	2	-	-	3 females-----	3	3	-	-
All born alive-----	2	2	-	-	All born alive-----	3	3	-	-
2 born alive-----	-	-	-	-	2 born alive-----	-	-	-	-
1 born alive-----	-	-	-	-	1 born alive-----	-	-	-	-
All born dead-----	-	-	-	-	All born dead-----	-	-	-	-

Table 2. Cases of plural births, by race, live-birth status, and sex: United States and each State, 1964—Con.

Plurality, State, live-birth status, and sex	Total	White	Negro	Other	Plurality, State, live-birth status, and sex	Total	White	Negro	Other
<u>Triplets</u>					<u>Triplets</u>				
Washington-----	7	7	-	-	Wisconsin-----	3	2	-	1
All born alive-----	5	5	-	-	All born alive-----	3	2	-	1
2 born alive-----	2	2	-	-	2 born alive-----	-	-	-	-
1 born alive-----	-	-	-	-	1 born alive-----	-	-	-	-
All born dead-----	-	-	-	-	All born dead-----	-	-	-	-
3 males-----	2	2	-	-	3 males-----	1	1	-	-
All born alive-----	1	1	-	-	All born alive-----	1	1	-	-
2 born alive-----	1	1	-	-	2 born alive-----	-	-	-	-
1 born alive-----	-	-	-	-	1 born alive-----	-	-	-	-
All born dead-----	-	-	-	-	All born dead-----	-	-	-	-
2 males, 1 female--	-	-	-	-	2 males, 1 female--	1	1	-	-
All born alive-----	-	-	-	-	All born alive-----	1	1	-	-
2 born alive:	-	-	-	-	2 born alive:	-	-	-	-
1 male, 1 female---	-	-	-	-	1 male, 1 female---	-	-	-	-
2 males-----	-	-	-	-	2 males-----	-	-	-	-
1 born alive--Male--	-	-	-	-	1 born alive--Male--	-	-	-	-
Female-----	-	-	-	-	Female-----	-	-	-	-
All born dead-----	-	-	-	-	All born dead-----	-	-	-	-
1 male, 2 females--	-	-	-	-	1 male, 2 females--	1	-	-	1
All born alive-----	-	-	-	-	All born alive-----	1	-	-	1
2 born alive:	-	-	-	-	2 born alive:	-	-	-	-
1 male, 1 female---	-	-	-	-	1 male, 1 female---	-	-	-	-
2 females-----	-	-	-	-	2 females-----	-	-	-	-
1 born alive--Male--	-	-	-	-	1 born alive--Male--	-	-	-	-
Female-----	-	-	-	-	Female-----	-	-	-	-
All born dead-----	-	-	-	-	All born dead-----	-	-	-	-
3 females-----	5	5	-	-	3 females-----	-	-	-	-
All born alive-----	4	4	-	-	All born alive-----	-	-	-	-
2 born alive-----	1	1	-	-	2 born alive-----	-	-	-	-
1 born alive-----	-	-	-	-	1 born alive-----	-	-	-	-
All born dead-----	-	-	-	-	All born dead-----	-	-	-	-
West Virginia----	1	1	-	-					
All born alive-----	1	1	-	-	<u>Quadruplets</u>				
2 born alive-----	-	-	-	-	United States				
1 born alive-----	-	-	-	-	All born alive-----	6	3	3	-
All born dead-----	-	-	-	-	4 males-----	1	-	1	-
3 males-----	-	-	-	-	2 males, 2 females--	1	-	1	-
All born alive-----	-	-	-	-	1 male, 3 females---	2	2	-	-
2 born alive-----	-	-	-	-	4 females-----	2	1	1	-
1 born alive-----	-	-	-	-	Maryland,				
All born dead-----	-	-	-	-	1 male, 3 females---	1	1	-	-
2 males, 1 female--	-	-	-	-	New York,				
All born alive-----	-	-	-	-	1 male, 3 females---	1	1	-	-
2 born alive:	-	-	-	-	Ohio, 4 males-----	1	-	1	-
1 male, 1 female---	-	-	-	-	Oregon, 4 females---	1	1	-	-
2 males-----	-	-	-	-	Pennsylvania,				
1 born alive--Male--	-	-	-	-	4 females-----	1	-	1	-
Female-----	-	-	-	-	Tennessee,				
All born dead-----	-	-	-	-	2 males, 2 females---	1	-	1	-
1 male, 2 females--	-	-	-	-	<u>Quintuplets</u>				
All born alive-----	-	-	-	-	United States				
2 born alive:	-	-	-	-	All born alive-----	1	1	-	-
1 male, 1 female---	-	-	-	-	Kentucky,				
2 females-----	-	-	-	-	4 males, 1 female---	1	1	-	-
1 born alive--Male--	-	-	-	-					
Female-----	-	-	-	-					
All born dead-----	-	-	-	-					
3 females-----	1	1	-	-					
All born alive-----	1	1	-	-					
2 born alive-----	-	-	-	-					
1 born alive-----	-	-	-	-					
All born dead-----	-	-	-	-					

Table 3. Cases of plural births, by race, live-birth status, sex, and age of mother: United States, 1964

(See general notes on page 50)

Plurality, race, live-birth status, and sex	Age of mother in years									Not stated	
	Total	Under 15	15-19	20-24	25-29	30-34	35-39	40-44	45+		
<u>Twins</u>											
All races-----	41,259	49	3,820	12,465	11,104	8,029	4,670	1,084	29	9	
Both born alive-----	38,752	42	3,482	11,679	10,509	7,597	4,407	1,002	28	6	
1 born alive-----	1,562	4	214	475	369	278	169	51	1	1	
Both born dead-----	945	3	124	311	226	154	94	31	-	2	
2 males-----	14,527	26	1,522	4,563	3,807	2,724	1,483	387	11	4	
Both born alive-----	13,516	22	1,379	4,238	3,573	2,559	1,385	349	10	1	
1 born alive-----	589	1	88	190	131	101	56	20	1	1	
Both born dead-----	422	3	55	135	103	64	42	18	-	2	
1 male, 1 female-----	12,715	8	869	3,505	3,555	2,779	1,663	327	7	2	
Both born alive-----	12,231	8	815	3,386	3,438	2,675	1,593	307	7	2	
1 born alive: Male-----	168	-	17	37	41	33	7	-	-	-	
Female-----	187	-	18	47	51	40	24	7	-	-	
Both born dead-----	129	-	19	35	25	31	13	6	-	-	
2 females-----	13,888	14	1,411	4,362	3,697	2,506	1,517	367	11	3	
Both born alive-----	13,005	12	1,288	4,055	3,498	2,363	1,429	346	11	3	
1 born alive-----	557	2	81	183	128	96	52	15	-	-	
Both born dead-----	326	-	42	124	71	47	36	6	-	-	
White-----	32,224	16	2,719	9,861	8,823	6,287	3,657	833	26	2	
Both born alive-----	30,446	13	2,499	9,272	8,387	5,996	3,478	774	25	2	
1 born alive-----	1,106	1	140	348	276	187	120	33	1	-	
Both born dead-----	672	2	80	241	160	104	59	26	-	-	
2 males-----	11,550	11	1,106	3,675	3,094	2,174	1,177	304	8	1	
Both born alive-----	10,809	8	1,002	3,426	2,920	2,061	1,109	275	7	1	
1 born alive-----	435	1	65	142	104	66	41	15	1	-	
Both born dead-----	306	2	39	107	70	47	27	14	-	-	
1 male, 1 female-----	9,603	3	558	2,647	2,732	2,117	1,304	235	7	-	
Both born alive-----	9,293	3	531	2,572	2,656	2,050	1,252	222	7	-	
1 born alive: Male-----	101	-	5	25	22	21	24	4	-	-	
Female-----	131	-	13	30	38	28	19	3	-	-	
Both born dead-----	78	-	9	20	16	18	9	6	-	-	
2 females-----	10,994	2	1,047	3,513	2,968	1,985	1,175	292	11	1	
Both born alive-----	10,344	2	966	3,274	2,811	1,885	1,117	277	11	1	
1 born alive-----	403	-	51	138	102	66	36	10	-	-	
Both born dead-----	247	-	30	101	55	34	22	5	-	-	
Negro-----	8,487	30	1,050	2,487	2,129	1,599	945	238	2	7	
Both born alive-----	7,798	26	939	2,296	1,982	1,469	864	216	2	4	
1 born alive-----	438	3	72	125	88	84	48	17	-	1	
Both born dead-----	251	1	39	66	59	46	33	5	-	2	
2 males-----	2,772	14	397	839	653	503	281	80	2	3	
Both born alive-----	2,520	13	361	766	599	457	251	71	2	-	
1 born alive-----	147	-	22	47	26	31	15	5	-	1	
Both born dead-----	105	1	14	26	28	15	15	4	-	2	
1 male, 1 female-----	2,978	4	298	833	787	622	342	90	-	2	
Both born alive-----	2,809	4	272	789	747	587	325	83	-	2	
1 born alive: Male-----	64	-	12	12	19	10	8	3	-	-	
Female-----	55	-	5	17	12	12	5	4	-	-	
Both born dead-----	50	-	9	15	9	13	4	-	-	-	
2 females-----	2,688	11	346	806	674	466	316	67	-	2	
Both born alive-----	2,469	9	306	741	636	425	288	62	-	2	
1 born alive-----	149	2	29	44	24	30	16	4	-	-	
Both born dead-----	70	-	11	21	14	11	12	1	-	-	
Other nonwhite-----	548	3	51	117	152	143	68	13	1	-	
Both born alive-----	508	3	44	111	140	132	65	12	1	-	
1 born alive-----	18	-	2	2	5	7	1	1	-	-	
Both born dead-----	22	-	5	4	7	4	2	-	-	-	
2 males-----	205	1	19	49	60	47	25	3	1	-	
Both born alive-----	187	1	16	46	54	41	25	3	1	-	
1 born alive-----	7	-	1	1	1	4	-	-	-	-	
Both born dead-----	11	-	2	2	5	2	-	-	-	-	
1 male, 1 female-----	134	1	13	25	36	40	17	2	-	-	
Both born alive-----	129	1	12	25	35	38	16	2	-	-	
1 born alive: Male-----	3	-	-	-	-	2	1	-	-	-	
Female-----	1	-	-	-	1	-	-	-	-	-	
Both born dead-----	1	-	1	-	-	-	-	-	-	-	
2 females-----	206	1	18	43	55	55	26	8	-	-	
Both born alive-----	192	1	16	40	51	53	24	7	-	-	
1 born alive-----	5	-	1	1	2	-	-	1	-	-	
Both born dead-----	9	-	1	2	2	2	2	-	-	-	

¹Excludes 603 cases with only 1 mate reported; of those reported, 360 were born alive and 243 were born dead.

NOTE: Cases of multiple births by sex composition may not sum to the total. The totals include cases with sex composition unknown.

Table 3. Cases of plural births, by race, live-birth status, sex, and age of mother: United States, 1964—Con.

Plurality, race, live-birth status, and sex	Age of mother in years									Not stated
	Total	Under 15	15-19	20-24	25-29	30-34	35-39	40-44	45+	
Triplets										
All races-----	399	-	31	91	111	85	65	14	2	-
All born alive-----	360	-	27	80	103	74	61	14	1	-
2 born alive-----	18	-	2	4	5	6	1	-	-	-
1 born alive-----	12	-	-	5	3	2	2	-	-	-
All born dead-----	9	-	2	2	-	3	1	-	1	-
3 males-----	104	-	8	29	31	21	9	4	2	-
All born alive-----	91	-	8	25	28	18	7	4	1	-
2 born alive-----	4	-	-	-	3	1	-	-	-	-
1 born alive-----	6	-	-	3	-	1	2	-	-	-
All born dead-----	3	-	-	1	-	1	-	-	1	-
2 males, 1 female-----	90	-	9	19	23	18	16	5	-	-
All born alive-----	81	-	8	18	21	14	15	5	-	-
2 born alive-Male, female-----	5	-	1	-	2	1	1	-	-	-
1 born alive: Male-----	-	-	-	-	-	-	-	-	-	-
Female-----	2	-	-	1	-	1	-	-	-	-
All born dead-----	2	-	-	-	-	2	-	-	-	-
1 male, 2 females-----	85	-	4	11	25	27	17	1	-	-
All born alive-----	79	-	3	10	24	24	17	1	-	-
2 born alive-Male, female-----	3	-	-	-	-	3	-	-	-	-
2 females-----	-	-	-	-	-	-	-	-	-	-
1 born alive: Male-----	1	-	-	-	1	-	-	-	-	-
Female-----	-	-	-	-	-	-	-	-	-	-
All born dead-----	2	-	1	1	-	-	-	-	-	-
3 females-----	117	-	9	30	32	19	23	4	-	-
All born alive-----	109	-	8	27	30	18	22	4	-	-
2 born alive-----	4	-	1	2	-	1	-	-	-	-
1 born alive-----	3	-	-	1	2	-	-	-	-	-
All born dead-----	1	-	-	-	-	-	1	-	-	-
White-----	292	-	24	61	83	64	48	11	1	-
All born alive-----	262	-	20	53	76	54	47	11	1	-
2 born alive-----	15	-	2	3	4	6	-	-	-	-
1 born alive-----	8	-	-	3	3	2	-	-	-	-
All born dead-----	7	-	2	2	-	2	1	-	-	-
3 males-----	71	-	5	16	23	18	6	2	1	-
All born alive-----	63	-	5	14	20	15	6	2	1	-
2 born alive-----	4	-	-	-	3	1	-	-	-	-
1 born alive-----	2	-	-	1	-	1	-	-	-	-
All born dead-----	2	-	-	1	-	1	-	-	-	-
2 males, 1 female-----	65	-	6	12	17	13	12	5	-	-
All born alive-----	59	-	5	11	16	10	12	5	-	-
2 born alive-Male, female-----	3	-	1	-	1	1	-	-	-	-
2 males-----	-	-	-	-	-	-	-	-	-	-
1 born alive: Male-----	-	-	-	-	-	-	-	-	-	-
Female-----	2	-	-	1	-	1	-	-	-	-
All born dead-----	1	-	-	-	-	1	-	-	-	-
1 male, 2 females-----	61	-	3	9	18	20	10	1	-	-
All born alive-----	55	-	2	8	17	17	10	1	-	-
2 born alive-Male, female-----	3	-	-	-	-	3	-	-	-	-
2 females-----	-	-	-	-	-	-	-	-	-	-
1 born alive: Male-----	1	-	-	-	1	-	-	-	-	-
Female-----	-	-	-	-	-	-	-	-	-	-
All born dead-----	2	-	1	1	-	-	-	-	-	-
3 females-----	93	-	9	23	25	13	20	3	-	-
All born alive-----	85	-	8	20	23	12	19	3	-	-
2 born alive-----	4	-	1	2	-	1	-	-	-	-
1 born alive-----	3	-	-	1	2	-	-	-	-	-
All born dead-----	1	-	-	-	-	-	1	-	-	-
Negro-----	95	-	6	26	26	19	15	2	1	-
All born alive-----	87	-	6	24	25	18	12	2	-	-
2 born alive-----	2	-	-	-	1	-	1	-	-	-
1 born alive-----	4	-	-	2	-	-	2	-	-	-
All born dead-----	2	-	-	-	-	1	-	-	1	-
3 males-----	29	-	2	12	8	3	2	1	1	-
All born alive-----	24	-	2	10	8	3	-	1	-	-
2 born alive-----	-	-	-	-	-	-	-	-	-	-
1 born alive-----	4	-	-	2	-	-	2	-	-	-
All born dead-----	1	-	-	-	-	-	-	-	1	-

²Excludes 4 cases of triplets in which only 2 mates were reported; of these, there were 2 cases with 2 born alive and 2 cases with 2 born dead. Excludes 11 cases of triplets in which only 1 mate was reported; of these, 3 were born alive and 8 were born dead.

Table 3. Cases of plural births, by race, live-birth status, sex, and age of mother: United States, 1964—Con.

Plurality, race, live-birth status, and sex	Age of mother in years									Not stated
	Total	Under 15	15-19	20-24	25-29	30-34	35-39	40-44	45+	
<u>Triplets—Con.</u>										
2 males, 1 female-----	24	-	3	7	5	5	4	-	-	-
All born alive-----	21	-	3	7	4	4	3	-	-	-
2 born alive-Male, female-----	2	-	-	7	1	-	1	-	-	-
2 males-----	-	-	-	-	-	-	-	-	-	-
1 born alive: Male-----	-	-	-	-	-	-	-	-	-	-
Female-----	-	-	-	-	-	-	-	-	-	-
All born dead-----	1	-	-	-	-	1	-	-	-	-
1 male, 2 females-----	21	-	1	1	7	6	6	-	-	-
All born alive-----	21	-	1	1	7	6	6	-	-	-
2 born alive-Male, female-----	-	-	-	-	-	-	-	-	-	-
2 females-----	-	-	-	-	-	-	-	-	-	-
1 born alive: Male-----	-	-	-	-	-	-	-	-	-	-
Female-----	-	-	-	-	-	-	-	-	-	-
All born dead-----	-	-	-	-	-	-	-	-	-	-
3 females-----	21	-	-	6	6	5	3	1	-	-
All born alive-----	21	-	-	6	6	5	3	1	-	-
2 born alive-----	-	-	-	-	-	-	-	-	-	-
1 born alive-----	-	-	-	-	-	-	-	-	-	-
All born dead-----	-	-	-	-	-	-	-	-	-	-
Other nonwhite-----	12	-	1	4	2	2	2	1	-	-
All born alive-----	11	-	1	3	2	2	2	1	-	-
2 born alive-----	1	-	-	1	-	-	-	-	-	-
1 born alive-----	-	-	-	-	-	-	-	-	-	-
All born dead-----	-	-	-	-	-	-	-	-	-	-
3 males-----	4	-	1	1	-	-	1	1	-	-
All born alive-----	4	-	1	1	-	-	1	1	-	-
2 born alive-----	-	-	-	-	-	-	-	-	-	-
1 born alive-----	-	-	-	-	-	-	-	-	-	-
All born dead-----	-	-	-	-	-	-	-	-	-	-
2 males, 1 female-----	1	-	-	-	1	-	-	-	-	-
All born alive-----	1	-	-	-	1	-	-	-	-	-
2 born alive-Male, female-----	-	-	-	-	-	-	-	-	-	-
2 males-----	-	-	-	-	-	-	-	-	-	-
1 born alive: Male-----	-	-	-	-	-	-	-	-	-	-
Female-----	-	-	-	-	-	-	-	-	-	-
All born dead-----	-	-	-	-	-	-	-	-	-	-
1 male, 2 females-----	3	-	-	1	-	1	1	-	-	-
All born alive-----	3	-	-	1	-	1	1	-	-	-
2 born alive-Male, female-----	-	-	-	-	-	-	-	-	-	-
2 females-----	-	-	-	-	-	-	-	-	-	-
1 born alive: Male-----	-	-	-	-	-	-	-	-	-	-
Female-----	-	-	-	-	-	-	-	-	-	-
All born dead-----	-	-	-	-	-	-	-	-	-	-
3 females-----	3	-	-	1	1	1	-	-	-	-
All born alive-----	3	-	-	1	1	1	-	-	-	-
2 born alive-----	-	-	-	-	-	-	-	-	-	-
1 born alive-----	-	-	-	-	-	-	-	-	-	-
All born dead-----	-	-	-	-	-	-	-	-	-	-
<u>Quadruplets</u>										
All races, all born alive-----	6	-	1	-	-	1	4	-	-	-
4 males-----	1	-	-	-	-	-	1	-	-	-
2 males, 2 females-----	1	-	-	-	-	-	1	-	-	-
1 male, 3 females-----	2	-	-	-	-	1	1	-	-	-
4 females-----	2	-	1	-	-	-	1	-	-	-
White, all born alive-----	3	-	1	-	-	1	1	-	-	-
1 male, 3 females-----	2	-	-	-	-	1	1	-	-	-
4 females-----	1	-	1	-	-	-	-	-	-	-
Negro, all born alive-----	3	-	-	-	-	-	3	-	-	-
4 males-----	1	-	-	-	-	-	1	-	-	-
2 males, 2 females-----	1	-	-	-	-	-	1	-	-	-
4 females-----	1	-	-	-	-	-	1	-	-	-
<u>Quintuplets</u>										
All races, all born alive-----	1	-	-	-	-	1	-	-	-	-
4 males, 1 female-----	1	-	-	-	-	1	-	-	-	-
White, all born alive-----	1	-	-	-	-	1	-	-	-	-
4 males, 1 female-----	1	-	-	-	-	1	-	-	-	-

Table 4. Cases of plural births, by race, live-birth status, sex, and number of previous live births: United States, 1964

(See general notes on page 50)

Plurality, race, live-birth status, and sex	Previous live births											
	Total	None	1	2	3	4	5	6	7	8 or more	Not stated	
Twins												
All races-----	141,259	8,272	8,689	7,646	5,534	3,806	2,388	1,601	1,066	2,004	253	
Both born alive-----	38,752	7,528	8,216	7,253	5,278	3,612	2,256	1,499	1,007	1,875	228	
1 born alive-----	1,562	454	296	234	164	129	92	63	41	81	8	
Both born dead-----	945	290	177	159	92	65	40	39	18	48	17	
2 males-----	14,527	3,223	3,104	2,693	1,887	1,285	753	534	333	619	96	
Both born alive-----	13,516	2,896	2,915	2,531	1,794	1,213	705	494	317	566	85	
1 born alive-----	589	192	114	98	52	43	26	21	9	32	2	
Both born dead-----	422	135	75	64	41	29	22	19	7	21	9	
1 male, 1 female-----	12,715	1,946	2,489	2,438	1,827	1,318	909	555	394	756	83	
Both born alive-----	12,231	1,829	2,409	2,369	1,775	1,274	865	531	376	724	79	
1 born alive: Male-----	168	45	27	22	13	14	16	5	11	13	2	
Female-----	187	38	31	27	25	20	20	11	5	10	-	
Both born dead-----	129	34	22	20	14	10	8	8	2	9	2	
2 females-----	13,888	3,067	3,075	2,495	1,805	1,187	721	505	337	625	71	
Both born alive-----	13,005	2,803	2,892	2,353	1,709	1,125	686	474	314	585	64	
1 born alive-----	557	165	113	80	66	44	27	21	15	24	2	
Both born dead-----	326	99	70	62	30	18	8	10	8	16	5	
White-----	32,224	6,935	7,281	6,375	4,416	2,846	1,637	1,005	575	919	235	
Both born alive-----	30,446	6,358	6,909	6,070	4,238	2,717	1,552	956	556	876	214	
1 born alive-----	1,106	357	230	178	114	90	63	32	13	22	7	
Both born dead-----	672	220	142	127	64	39	22	17	6	21	14	
2 males-----	11,550	2,718	2,595	2,287	1,536	983	524	330	200	288	89	
Both born alive-----	10,809	2,459	2,442	2,158	1,470	938	490	312	191	268	81	
1 born alive-----	435	157	92	77	34	28	20	11	5	10	1	
Both born dead-----	306	102	61	52	32	17	14	7	4	10	7	
1 male, 1 female-----	9,603	1,593	2,032	1,996	1,439	962	611	343	197	351	79	
Both born alive-----	9,293	1,509	1,976	1,946	1,404	929	586	333	191	344	75	
1 born alive: Male-----	101	32	18	15	8	11	8	2	4	1	2	
Female-----	131	28	25	21	20	15	14	5	1	2	-	
Both born dead-----	78	24	13	14	7	7	3	3	1	4	2	
2 females-----	10,994	2,601	2,639	2,077	1,431	894	501	329	178	280	64	
Both born alive-----	10,344	2,390	2,491	1,966	1,364	850	476	311	174	264	58	
1 born alive-----	403	130	88	61	47	31	20	12	3	9	2	
Both born dead-----	247	81	60	50	20	13	5	6	1	7	4	
Negro-----	8,487	1,221	1,309	1,198	1,039	911	713	573	472	1,036	15	
Both born alive-----	7,798	1,069	1,217	1,116	966	847	666	520	432	953	12	
1 born alive-----	438	93	64	52	46	38	29	31	28	56	1	
Both born dead-----	251	59	28	30	27	26	18	22	12	27	2	
2 males-----	2,772	457	463	377	322	291	216	197	125	318	6	
Both born alive-----	2,520	397	431	347	298	264	202	175	118	285	3	
1 born alive-----	147	34	20	19	16	15	6	10	4	22	1	
Both born dead-----	105	26	12	11	8	12	8	12	3	11	2	
1 male, 1 female-----	2,978	331	440	423	369	339	288	205	190	390	3	
Both born alive-----	2,809	299	416	405	352	329	269	191	178	367	3	
1 born alive: Male-----	64	13	9	6	5	3	8	3	7	10	-	
Female-----	55	10	6	6	5	4	6	6	4	8	-	
Both born dead-----	50	9	9	6	7	3	5	5	1	5	-	
2 females-----	2,688	420	401	394	344	272	205	167	155	324	6	
Both born alive-----	2,469	373	370	364	316	254	195	154	136	301	6	
1 born alive-----	149	32	25	19	18	13	7	9	12	14	-	
Both born dead-----	70	15	6	11	10	5	3	4	7	9	-	
Other nonwhite-----	548	116	99	73	79	49	38	23	19	49	3	
Both born alive-----	508	101	90	67	74	48	38	23	19	46	2	
1 born alive-----	18	4	2	4	4	1	-	-	-	3	-	
Both born dead-----	22	11	7	2	1	-	-	-	-	-	1	
2 males-----	205	48	46	29	29	11	13	7	8	13	1	
Both born alive-----	187	40	42	26	26	11	13	7	8	13	1	
1 born alive-----	7	2	2	2	2	-	-	-	-	-	-	
Both born dead-----	11	7	2	1	1	-	-	-	-	-	-	
1 male, 1 female-----	134	22	17	19	19	17	10	7	7	15	1	
Both born alive-----	129	21	17	18	19	16	10	7	7	13	1	
1 born alive: Male-----	3	-	-	1	-	-	-	-	-	2	-	
Female-----	1	-	-	-	-	1	-	-	-	-	-	
Both born dead-----	1	1	-	-	-	-	-	-	-	-	-	
2 females-----	206	46	35	24	30	21	15	9	4	21	1	
Both born alive-----	192	40	31	23	29	21	15	9	4	20	-	
1 born alive-----	5	3	-	-	1	-	-	-	-	1	-	
Both born dead-----	9	3	4	1	-	-	-	-	-	-	1	

¹Excludes 603 cases with only 1 mate reported; of those reported, 360 were born alive and 243 were born dead.

Table 4. Cases of plural births, by race, live-birth status, sex, and number of previous live births: United States, 1964—Con.

Plurality, race, live-birth status, and sex	Previous live births											
	Total	None	1	2	3	4	5	6	7	8 or more	Not stated	
Triplets												
All races-----	² 399	60	70	70	55	44	29	25	20	24	2	
All born alive-----	360	50	66	65	52	38	28	22	19	19	1	
2 born alive-----	18	3	2	2	3	5	-	2	-	1	-	
1 born alive-----	12	5	-	3	-	1	-	1	-	2	-	
All born dead-----	9	2	2	-	-	-	1	-	1	2	1	
3 males-----	104	19	19	17	10	13	6	7	6	7	-	
All born alive-----	91	16	18	16	8	11	5	6	5	6	-	
2 born alive-----	4	-	-	-	2	2	-	-	-	-	-	
1 born alive-----	6	3	-	1	-	-	-	1	-	1	-	
All born dead-----	3	-	1	-	-	-	1	-	1	-	-	
2 males, 1 female-----	90	15	15	17	9	11	5	7	5	5	1	
All born alive-----	81	13	14	16	9	9	5	6	5	4	-	
2 born alive: Male, female-----	5	1	1	-	-	2	-	1	-	-	-	
2 males-----	-	-	-	-	-	-	-	-	-	-	-	
1 born alive: Male-----	-	-	-	-	-	-	-	-	-	-	-	
Female-----	2	1	-	1	-	-	-	-	-	-	-	
All born dead-----	2	-	-	-	-	-	-	-	-	1	1	
1 male, 2 females-----	85	6	12	20	19	6	9	2	5	5	1	
All born alive-----	79	5	11	18	18	6	9	2	5	4	1	
2 born alive: Male, female-----	3	-	-	1	1	-	-	-	-	1	-	
2 females-----	-	-	-	-	-	-	-	-	-	-	-	
1 born alive: Male-----	1	-	-	1	-	-	-	-	-	-	-	
Female-----	-	-	-	-	-	-	-	-	-	-	-	
All born dead-----	2	1	1	-	-	-	-	-	-	-	-	
3 females-----	117	19	24	15	17	13	9	9	4	7	-	
All born alive-----	109	16	23	15	17	12	9	8	4	5	-	
2 born alive-----	4	2	1	-	-	-	-	1	-	-	-	
1 born alive-----	3	1	-	-	-	1	-	-	-	1	-	
All born dead-----	1	-	-	-	-	-	-	-	-	1	-	
White-----	292	46	56	58	45	30	19	13	11	12	2	
All born alive-----	262	37	52	54	42	26	18	12	11	9	1	
2 born alive-----	15	3	2	2	3	3	-	1	-	1	-	
1 born alive-----	8	4	-	2	-	1	-	-	-	1	-	
All born dead-----	7	2	2	-	-	-	1	-	-	1	1	
3 males-----	71	14	13	15	8	8	3	5	3	2	-	
All born alive-----	63	12	12	15	6	6	2	5	3	2	-	
2 born alive-----	4	-	-	-	2	2	-	-	-	-	-	
1 born alive-----	2	2	-	-	-	-	-	-	-	-	-	
All born dead-----	2	-	1	-	-	-	1	-	-	-	-	
2 males, 1 female-----	65	10	10	15	8	9	3	3	5	1	1	
All born alive-----	59	8	9	14	8	8	3	3	5	1	-	
2 born alive: Male, female-----	3	1	1	-	-	1	-	-	-	-	-	
2 males-----	-	-	-	-	-	-	-	-	-	-	-	
1 born alive: Male-----	-	-	-	-	-	-	-	-	-	-	-	
Female-----	2	1	-	1	-	-	-	-	-	-	-	
All born dead-----	1	-	-	-	-	-	-	-	-	-	1	
1 male, 2 females-----	61	5	11	14	15	4	5	-	2	4	1	
All born alive-----	55	4	10	12	14	4	5	-	2	3	1	
2 born alive: Male, female-----	3	-	-	1	1	-	-	-	-	1	-	
2 females-----	-	-	-	-	-	-	-	-	-	-	-	
1 born alive: Male-----	1	-	-	1	-	-	-	-	-	-	-	
Female-----	-	-	-	-	-	-	-	-	-	-	-	
All born dead-----	2	1	1	-	-	-	-	-	-	-	-	
3 females-----	93	16	22	13	14	9	8	5	1	5	-	
All born alive-----	85	13	21	13	14	8	8	4	1	3	-	
2 born alive-----	4	2	1	-	-	-	-	1	-	-	-	
1 born alive-----	3	1	-	-	-	1	-	-	-	1	-	
All born dead-----	1	-	-	-	-	-	-	-	-	1	-	
Negro-----	95	13	12	11	8	13	9	11	9	9	-	
All born alive-----	87	12	12	10	8	12	9	9	8	7	-	
2 born alive-----	2	-	-	-	-	1	-	1	-	-	-	
1 born alive-----	4	1	-	1	-	-	-	1	-	1	-	
All born dead-----	2	-	-	-	-	-	-	-	1	1	-	
3 males-----	29	5	5	1	2	5	2	2	3	4	-	
All born alive-----	24	4	5	-	2	5	2	1	2	3	-	
2 born alive-----	-	-	-	-	-	-	-	-	-	-	-	
1 born alive-----	4	1	-	1	-	-	-	1	-	1	-	
All born dead-----	1	-	-	-	-	-	-	-	1	-	-	

²Excludes 4 cases of triplets in which only 2 mates were reported; of these, there were 2 cases with 2 born alive and 2 cases with 2 born dead. Excludes 11 cases of triplets in which only 1 mate was reported; of these, 3 were born alive and 8 were born dead.

NOTE: Cases of multiple births by sex composition may not sum to the total. The totals include cases with sex composition unknown.

Table 4. Cases of plural births, by race, live-birth status, sex, and number of previous live births: United States, 1964--Con.

Plurality, race, live-birth status, and sex	Previous live births										
	Total	None	1	2	3	4	5	6	7	8 or more	Not stated
<u>Triplets--Con.</u>											
2 males, 1 female-----	24	5	5	2	1	2	2	4	-	3	-
All born alive-----	21	5	5	2	1	1	2	3	-	2	-
2 born alive: Male, female-----	2	-	-	-	-	1	-	1	-	-	-
2 males-----	-	-	-	-	-	-	-	-	-	-	-
1 born alive: Male-----	-	-	-	-	-	-	-	-	-	-	-
Female-----	-	-	-	-	-	-	-	-	-	-	-
All born dead-----	1	-	-	-	-	-	-	-	-	1	-
1 male, 2 females-----	21	1	1	6	2	2	4	2	3	-	-
All born alive-----	21	1	1	6	2	2	4	2	3	-	-
2 born alive: Male, female-----	-	-	-	-	-	-	-	-	-	-	-
2 females-----	-	-	-	-	-	-	-	-	-	-	-
1 born alive: Male-----	-	-	-	-	-	-	-	-	-	-	-
Female-----	-	-	-	-	-	-	-	-	-	-	-
All born dead-----	-	-	-	-	-	-	-	-	-	-	-
3 females-----	21	2	1	2	3	4	1	3	3	2	-
All born alive-----	21	2	1	2	3	4	1	3	3	2	-
2 born alive-----	-	-	-	-	-	-	-	-	-	-	-
1 born alive-----	-	-	-	-	-	-	-	-	-	-	-
All born dead-----	-	-	-	-	-	-	-	-	-	-	-
Other nonwhite-----	12	1	2	1	2	1	1	1	-	3	-
All born alive-----	11	1	2	1	2	-	1	1	-	3	-
2 born alive-----	1	-	-	-	-	1	-	-	-	-	-
1 born alive-----	-	-	-	-	-	-	-	-	-	-	-
All born dead-----	-	-	-	-	-	-	-	-	-	-	-
3 males-----	4	-	1	1	-	-	1	-	-	1	-
All born alive-----	4	-	1	1	-	-	1	-	-	1	-
2 born alive-----	-	-	-	-	-	-	-	-	-	-	-
1 born alive-----	-	-	-	-	-	-	-	-	-	-	-
All born dead-----	-	-	-	-	-	-	-	-	-	-	-
2 males, 1 female-----	1	-	-	-	-	-	-	-	-	1	-
All born alive-----	1	-	-	-	-	-	-	-	-	1	-
2 born alive: Male, female-----	-	-	-	-	-	-	-	-	-	-	-
2 males-----	-	-	-	-	-	-	-	-	-	-	-
1 born alive: Male-----	-	-	-	-	-	-	-	-	-	-	-
Female-----	-	-	-	-	-	-	-	-	-	-	-
All born dead-----	-	-	-	-	-	-	-	-	-	-	-
1 male, 2 females-----	3	-	-	-	2	-	-	-	-	1	-
All born alive-----	3	-	-	-	2	-	-	-	-	1	-
2 born alive: Male, female-----	-	-	-	-	-	-	-	-	-	-	-
2 females-----	-	-	-	-	-	-	-	-	-	-	-
1 born alive: Male-----	-	-	-	-	-	-	-	-	-	-	-
Female-----	-	-	-	-	-	-	-	-	-	-	-
All born dead-----	-	-	-	-	-	-	-	-	-	-	-
3 females-----	3	1	1	-	-	-	-	1	-	-	-
All born alive-----	3	1	1	-	-	-	-	1	-	-	-
2 born alive-----	-	-	-	-	-	-	-	-	-	-	-
1 born alive-----	-	-	-	-	-	-	-	-	-	-	-
All born dead-----	-	-	-	-	-	-	-	-	-	-	-
<u>Quadruplets</u>											
All races, all born alive-----	6	-	1	1	-	2	1	-	1	-	-
4 males-----	1	-	-	-	-	-	1	-	-	-	-
2 males, 2 females-----	1	-	-	-	-	1	-	-	-	-	-
1 male, 3 females-----	2	-	-	1	-	1	-	-	-	-	-
4 females-----	2	-	1	-	-	-	-	-	1	-	-
White, all born alive-----	3	-	1	1	-	1	-	-	-	-	-
1 male, 3 females-----	2	-	-	1	-	1	-	-	-	-	-
4 females-----	1	-	1	-	-	-	-	-	-	-	-
Negro, all born alive-----	3	-	-	-	-	1	1	-	1	-	-
4 males-----	1	-	-	-	-	-	1	-	-	-	-
2 males, 2 females-----	1	-	-	-	-	1	-	-	-	-	-
4 females-----	1	-	-	-	-	-	-	-	1	-	-
<u>Quintuplets</u>											
All races, all born alive-----	1	-	1	-	-	-	-	-	-	-	-
4 males, 1 female-----	1	-	1	-	-	-	-	-	-	-	-
White, all born alive-----	1	-	1	-	-	-	-	-	-	-	-
4 males, 1 female-----	1	-	1	-	-	-	-	-	-	-	-

Table 5. Cases of live-born twins, by sex, race, age of mother, and number of previous live births: United States, 1964

(See general notes on page 50)

Sex, race, and age of mother	Previous live births										
	Total	None	1	2	3	4	5	6	7	8 or more	Not stated
All cases of live-born twins-----	38,752	7,528	8,216	7,253	5,278	3,612	2,256	1,499	1,007	1,875	228
2 males-----	13,516	2,896	2,915	2,531	1,794	1,213	705	494	317	566	85
1 male, 1 female-----	12,231	1,829	2,409	2,369	1,775	1,274	865	531	376	724	79
2 females-----	13,005	2,803	2,892	2,353	1,709	1,125	686	474	314	585	64
White-----	30,446	6,358	6,909	6,070	4,238	2,717	1,552	956	556	876	214
2 males-----	10,809	2,459	2,442	2,158	1,470	938	490	312	191	268	81
1 male, 1 female-----	9,293	1,509	1,976	1,946	1,404	929	586	333	191	344	75
2 females-----	10,344	2,390	2,491	1,966	1,364	850	476	311	174	264	58
Negro-----	7,798	1,069	1,217	1,116	966	847	666	520	432	953	12
2 males-----	2,520	397	431	347	298	264	202	175	118	285	3
1 male, 1 female-----	2,809	299	416	405	352	329	269	191	178	367	3
2 females-----	2,469	373	370	364	316	254	195	154	136	301	6
Other-----	508	101	90	67	74	48	38	23	19	46	2
2 males-----	187	40	42	26	26	11	13	7	8	13	1
1 male, 1 female-----	129	21	17	18	19	16	10	7	7	13	1
2 females-----	192	40	31	23	29	21	15	9	4	20	-
Under 15 years-----	42	40	2	-	-	-	-	-	-	-	-
2 males-----	22	21	1	-	-	-	-	-	-	-	-
1 male, 1 female-----	8	8	-	-	-	-	-	-	-	-	-
2 females-----	12	11	1	-	-	-	-	-	-	-	-
White-----	13	13	-	-	-	-	-	-	-	-	-
2 males-----	8	8	-	-	-	-	-	-	-	-	-
1 male, 1 female-----	3	3	-	-	-	-	-	-	-	-	-
2 females-----	2	2	-	-	-	-	-	-	-	-	-
Negro-----	26	24	2	-	-	-	-	-	-	-	-
2 males-----	13	12	1	-	-	-	-	-	-	-	-
1 male, 1 female-----	4	4	-	-	-	-	-	-	-	-	-
2 females-----	9	8	1	-	-	-	-	-	-	-	-
Other-----	3	3	-	-	-	-	-	-	-	-	-
2 males-----	1	1	-	-	-	-	-	-	-	-	-
1 male, 1 female-----	1	1	-	-	-	-	-	-	-	-	-
2 females-----	1	1	-	-	-	-	-	-	-	-	-
15-19 years-----	3,482	2,198	943	247	58	14	-	-	-	-	22
2 males-----	1,379	903	354	81	28	6	-	-	-	-	7
1 male, 1 female-----	815	442	261	81	17	4	-	-	-	-	10
2 females-----	1,288	853	328	85	13	4	-	-	-	-	5
White-----	2,499	1,709	611	134	20	4	-	-	-	-	21
2 males-----	1,002	713	226	42	11	3	-	-	-	-	7
1 male, 1 female-----	531	319	156	40	6	-	-	-	-	-	10
2 females-----	966	677	229	52	3	1	-	-	-	-	4
Negro-----	939	468	315	108	37	10	-	-	-	-	1
2 males-----	361	183	123	35	17	3	-	-	-	-	1
1 male, 1 female-----	272	118	99	40	11	4	-	-	-	-	-
2 females-----	306	167	93	33	9	3	-	-	-	-	1
Other-----	44	21	17	5	1	-	-	-	-	-	-
2 males-----	16	7	5	4	-	-	-	-	-	-	-
1 male, 1 female-----	12	5	6	1	-	-	-	-	-	-	-
2 females-----	16	9	6	-	1	-	-	-	-	-	-
20-24 years-----	11,679	3,521	3,869	2,412	1,109	445	163	71	29	13	47
2 males-----	4,238	1,336	1,390	859	394	142	57	27	10	5	18
1 male, 1 female-----	3,386	893	1,082	767	364	167	62	22	11	4	14
2 females-----	4,055	1,292	1,397	786	351	136	44	22	8	4	15
White-----	9,272	3,066	3,275	1,874	720	213	56	19	4	3	42
2 males-----	3,426	1,171	1,180	686	274	70	18	10	-	2	15
1 male, 1 female-----	2,572	758	888	584	225	75	21	4	4	-	13
2 females-----	3,274	1,137	1,207	604	221	68	17	5	-	1	14
Negro-----	2,296	420	565	514	372	229	104	52	25	10	5
2 males-----	766	149	194	166	114	72	38	17	10	3	3
1 male, 1 female-----	789	127	191	175	134	91	41	18	7	4	1
2 females-----	741	144	180	173	124	66	25	17	8	3	1
Other-----	111	35	29	24	17	3	3	-	-	-	-
2 males-----	46	16	16	7	6	-	1	-	-	-	-
1 male, 1 female-----	25	8	3	8	5	1	-	-	-	-	-
2 females-----	40	11	10	9	6	2	2	-	-	-	-

Table 5. Cases of live-born twins, by sex, race, age of mother, and number of previous live births: United States, 1964—Con.

Sex, race, and age of mother	Previous live births										
	Total	None	1	2	3	4	5	6	7	8 or more	Not stated
Twins—Con.											
25-29 years-----	10,509	1,178	2,108	2,573	1,910	1,253	666	374	202	174	71
2 males-----	3,573	422	719	897	648	432	200	117	57	57	24
1 male, 1 female-----	3,438	314	645	839	635	430	265	140	79	67	24
2 females-----	3,498	442	744	837	627	391	201	117	66	50	23
White-----	8,387	1,057	1,869	2,259	1,555	889	378	184	67	61	68
2 males-----	2,920	379	631	805	541	324	119	57	21	20	23
1 male, 1 female-----	2,656	279	563	723	510	291	148	70	22	26	24
2 females-----	2,811	399	675	731	504	274	111	57	24	15	21
Negro-----	1,982	96	216	297	326	344	279	185	128	109	2
2 males-----	599	31	76	88	95	101	77	60	34	37	-
1 male, 1 female-----	747	31	77	111	119	133	115	67	54	40	-
2 females-----	636	34	63	98	112	110	87	58	40	32	2
Other-----	140	25	23	17	29	20	9	5	7	4	1
2 males-----	54	12	12	4	12	7	4	-	2	-	1
1 male, 1 female-----	35	4	5	5	6	6	2	3	3	1	-
2 females-----	51	9	6	8	11	7	3	2	2	3	-
30-34 years-----	7,597	396	868	1,352	1,411	1,110	800	582	387	643	48
2 males-----	2,559	147	311	466	487	368	221	212	126	200	21
1 male, 1 female-----	2,675	103	285	467	472	401	329	200	149	252	17
2 females-----	2,363	146	272	419	452	341	250	170	112	191	10
White-----	5,996	344	774	1,199	1,229	925	596	401	220	263	45
2 males-----	2,061	129	281	420	433	312	167	143	82	73	21
1 male, 1 female-----	2,050	92	249	403	398	329	245	136	75	109	14
2 females-----	1,885	123	244	376	398	284	184	122	63	81	10
Negro-----	1,469	38	79	142	162	171	186	170	159	360	2
2 males-----	457	14	24	39	49	55	48	66	41	121	-
1 male, 1 female-----	587	10	33	62	68	66	78	61	71	136	2
2 females-----	425	14	22	41	45	50	60	43	47	103	-
Other-----	132	14	15	11	20	14	18	11	8	20	1
2 males-----	41	4	6	7	5	1	6	3	3	6	-
1 male, 1 female-----	38	3	3	2	6	6	6	3	3	7	1
2 females-----	53	9	6	2	9	7	6	5	2	7	-
35-39 years-----	4,407	165	365	562	681	636	515	382	324	747	30
2 males-----	1,385	53	121	191	201	211	184	107	100	207	10
1 male, 1 female-----	1,593	64	119	185	257	228	172	145	121	291	11
2 females-----	1,429	48	125	186	223	197	159	130	103	249	9
White-----	3,478	143	325	504	616	553	421	283	217	386	30
2 males-----	1,109	45	107	171	178	183	150	78	70	117	10
1 male, 1 female-----	1,252	54	106	169	239	194	139	107	80	153	11
2 females-----	1,117	44	112	164	199	176	132	98	67	116	9
Negro-----	864	19	35	49	60	73	87	93	103	345	-
2 males-----	251	8	11	17	20	25	33	25	27	85	-
1 male, 1 female-----	325	8	13	14	16	31	31	37	40	135	-
2 females-----	288	3	11	18	24	17	23	31	36	125	-
Other-----	65	3	5	9	5	10	7	6	4	16	-
2 males-----	25	-	3	3	3	3	1	4	3	5	-
1 male, 1 female-----	16	2	-	2	2	3	2	1	1	3	-
2 females-----	24	1	2	4	-	4	4	1	-	8	-
40-44 years-----	1,002	27	58	103	105	151	112	87	62	290	7
2 males-----	349	13	19	35	34	54	43	31	23	93	4
1 male, 1 female-----	307	4	15	30	29	44	37	23	15	107	3
2 females-----	346	10	24	38	42	53	32	33	24	90	-
White-----	774	23	53	96	95	130	101	66	46	157	7
2 males-----	275	13	17	32	32	46	36	24	18	53	4
1 male, 1 female-----	222	3	13	27	25	40	33	15	9	54	3
2 females-----	277	7	23	37	38	44	32	27	19	50	-
Negro-----	216	4	4	6	8	20	10	20	16	128	-
2 males-----	71	-	2	2	2	8	6	7	5	39	-
1 male, 1 female-----	83	1	2	3	4	4	4	8	6	51	-
2 females-----	62	3	-	1	2	8	-	5	5	38	-
Other-----	12	-	1	1	2	1	1	1	-	5	-
2 males-----	3	-	-	1	-	-	1	-	-	1	-
1 male, 1 female-----	2	-	-	-	-	-	-	-	-	2	-
2 females-----	7	-	1	-	2	1	-	1	-	2	-

Table 5. Cases of live-born twins, by sex, race, age of mother, and number of previous live births: United States, 1964—Con.

Sex, race, and age of mother	Previous live births										
	Total	None	1	2	3	4	5	6	7	8 or more	Not stated
Twins—Con.											
45 years and over-----	28	3	1	4	4	3	-	3	3	7	-
2 males-----	10	1	-	2	2	-	-	-	1	4	-
1 male, 1 female-----	7	1	1	-	1	-	-	1	1	2	-
2 females-----	11	1	-	2	1	3	-	2	1	1	-
White-----	25	3	1	4	3	3	-	3	2	6	-
2 males-----	7	1	-	2	1	-	-	-	-	3	-
1 male, 1 female-----	7	1	1	-	1	-	-	1	1	2	-
2 females-----	11	1	-	2	1	3	-	2	1	1	-
Negro-----	2	-	-	-	1	-	-	-	1	-	-
2 males-----	2	-	-	-	1	-	-	-	1	-	-
1 male, 1 female-----	-	-	-	-	-	-	-	-	-	-	-
2 females-----	-	-	-	-	-	-	-	-	-	-	-
Other-----	1	-	-	-	-	-	-	-	-	1	-
2 males-----	1	-	-	-	-	-	-	-	-	1	-
1 male, 1 female-----	-	-	-	-	-	-	-	-	-	-	-
2 females-----	-	-	-	-	-	-	-	-	-	-	-
Age not stated-----	6	-	2	-	-	-	-	-	-	1	3
2 males-----	1	-	-	-	-	-	-	-	-	-	1
1 male, 1 female-----	2	-	1	-	-	-	-	-	-	1	-
2 females-----	3	-	1	-	-	-	-	-	-	-	2
White-----	2	-	1	-	-	-	-	-	-	-	1
2 males-----	1	-	-	-	-	-	-	-	-	-	1
1 male, 1 female-----	-	-	-	-	-	-	-	-	-	-	-
2 females-----	1	-	1	-	-	-	-	-	-	-	-
Negro-----	4	-	1	-	-	-	-	-	-	1	2
2 males-----	-	-	-	-	-	-	-	-	-	-	-
1 male, 1 female-----	2	-	1	-	-	-	-	-	-	1	-
2 females-----	2	-	-	-	-	-	-	-	-	-	2
Other-----	-	-	-	-	-	-	-	-	-	-	-
2 males-----	-	-	-	-	-	-	-	-	-	-	-
1 male, 1 female-----	-	-	-	-	-	-	-	-	-	-	-
2 females-----	-	-	-	-	-	-	-	-	-	-	-

APPENDIX

Matching of Records

The data in this report come from a complete count of the records of multiple deliveries occurring in 1964. Each registration area provided a listing of its multiple births for that year. These lists contained an entry for each individual who was a member of a multiple delivery or set.

For each case of multiple birth, the code for the reporting area, the case number, and the birth certificate numbers of the individuals were entered on a Plural Birth Case Abstract. The microfilm copies of the birth certificates provided the rest of the information for the abstract—plurality of the delivery, State of residence of the mother, race of the mother and father, age of the mother, number of live births before that pregnancy, and the sex of the child. If all the births in the set were live births, the case abstract was complete.

In cases where the birth certificate indicated more births than there were live-birth certificates, e.g., if twins were indicated but there was only one live-birth certificate on the list, the date of the birth, the name of the parent, and any other information available were noted on the case abstract for use in matching with fetal-death certificates. A list of fetal deaths for the registration area was searched for mates of in-

dividuals on the incomplete abstracts. All the available information was used in trying to match the live-birth and fetal-death records.

The multiple sets for which one or more records could not be found are considered "unmatched." These unmatched cases have been excluded from all tabulations in this report. There were 603 unmatched cases of twins and 15 unmatched cases of triplets.

Base for Rates

The base used for the twin and triplet rates is an estimate of the total number of deliveries with one or more live births, by age of mother, number of previous live births, and race.

This estimate is obtained by subtracting the number of cases of twins with two live births from the total number of live births. These cases of twins contribute two individuals to the number of live births; by subtracting this number the double count is eliminated, giving the estimate of the number of deliveries. There is a very slight upward bias in this estimate due to the cases of triplet and higher multiple deliveries with more than one live birth. However, this is insignificant, representing less than 0.02 percent of the total number of deliveries.

— ○ ○ ○ —

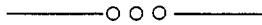
GENERAL NOTES

Place of residence.—Data for States and other geographic areas are for residents of the specified area.

Live-birth status.—Live-birth status refers to the number of individuals born alive and the number born dead in each multiple set.

Fetal deaths.—Cases of fetal deaths are included only if the period of gestation was given as 20 weeks or more or not stated.

Previous live births.—The number of previous live births refers to the number of live births occurring before the multiple delivery.



VITAL AND HEALTH STATISTICS PUBLICATION SERIES

Originally Public Health Service Publication No. 1000

- Series 1. Programs and collection procedures.*—Reports which describe the general programs of the National Center for Health Statistics and its offices and divisions, data collection methods used, definitions, and other material necessary for understanding the data.
- Series 2. Data evaluation and methods research.*—Studies of new statistical methodology including: experimental tests of new survey methods, studies of vital statistics collection methods, new analytical techniques, objective evaluations of reliability of collected data, contributions to statistical theory.
- Series 3. Analytical studies.*—Reports presenting analytical or interpretive studies based on vital and health statistics, carrying the analysis further than the expository types of reports in the other series.
- Series 4. Documents and committee reports.*—Final reports of major committees concerned with vital and health statistics, and documents such as recommended model vital registration laws and revised birth and death certificates.
- Series 10. Data from the Health Interview Survey.*—Statistics on illness, accidental injuries, disability, use of hospital, medical, dental, and other services, and other health-related topics, based on data collected in a continuing national household interview survey.
- Series 11. Data from the Health Examination Survey.*—Data from direct examination, testing, and measurement of national samples of the civilian, noninstitutional population provide the basis for two types of reports: (1) estimates of the medically defined prevalence of specific diseases in the United States and the distributions of the population with respect to physical, physiological, and psychological characteristics; and (2) analysis of relationships among the various measurements without reference to an explicit finite universe of persons.
- Series 12. Data from the Institutional Population Surveys.*—Statistics relating to the health characteristics of persons in institutions, and their medical, nursing, and personal care received, based on national samples of establishments providing these services and samples of the residents or patients.
- Series 13. Data from the Hospital Discharge Survey.*—Statistics relating to discharged patients in short-stay hospitals, based on a sample of patient records in a national sample of hospitals.
- Series 14. Data on health resources: manpower and facilities.*—Statistics on the numbers, geographic distribution, and characteristics of health resources including physicians, dentists, nurses, other health occupations, hospitals, nursing homes, and outpatient facilities.
- Series 20. Data on mortality.*—Various statistics on mortality other than as included in regular annual or monthly reports—special analyses by cause of death, age, and other demographic variables, also geographic and time series analyses.
- Series 21. Data on natality, marriage, and divorce.*—Various statistics on natality, marriage, and divorce other than as included in regular annual or monthly reports—special analyses by demographic variables, also geographic and time series analyses, studies of fertility.
- Series 22. Data from the National Natality and Mortality Surveys.*—Statistics on characteristics of births and deaths not available from the vital records, based on sample surveys stemming from these records, including such topics as mortality by socioeconomic class, hospital experience in the last year of life, medical care during pregnancy, health insurance coverage, etc.

For a list of titles of reports published in these series, write to: Scientific and Technical Information Branch
National Center for Health Statistics
Public Health Service, HRA
Rockville, Md. 20852