

PROGRAM

2012  
NATIONAL CONFERENCE  
ON HEALTH STATISTICS



National Center for Health Statistics

August 6–8, 2012

Renaissance Washington DC Downtown Hotel  
999 Ninth Street NW, Washington DC 20001



Centers for Disease  
Control and Prevention  
National Center for  
Health Statistics

# TABLE OF CONTENTS

---

---

Conference Information .....	02
Renaissance Hotel Information .....	02
Conference Schedule	
<b>Monday</b>	
Learning Institute Sessions .....	03
<b>Tuesday</b>	
Plenary and Scientific Sessions.....	10
<b>Wednesday</b>	
Plenary and Scientific Sessions.....	20
Speaker Biographies .....	31
Exhibitors .....	35
Poster Sessions.....	41
Speaker Indexes.....	48
Speakers .....	48
Sessions by Survey and Office .....	51
Sessions by Topic .....	52
Thank You .....	53
<b>Special Pull-Out Section:</b>	
Hotel Information.....	27
Conference At-a-Glance	
<b>Monday</b> .....	28
<b>Tuesday</b> .....	29
<b>Wednesday</b> .....	30

## Committees

### Executive Planning Committee

Tammy Stewart-Prather, M.A. Co-Chair  
Paul Sutton, Ph.D. Co-Chair  
Virginia Cain, Ph.D. Senior Advisor

### Conference Program Planning Committee

Kathy Brannan, Office of Information Services  
Alyson Essex, Ph.D., Division of Health Care Statistics  
Adam Goldston-Rumpke, Office of Research and Methodology  
David Huang, Ph.D., M.P.H., C.P.H., Office of Analysis and Epidemiology  
Hetty Khan, M.G.A., M.S., R.N., Classifications and Public Health Standards Staff  
Julia Kowaleski, Division of Vital Statistics  
Michael Martinez, M.P.H., M.H.S.A, Division of Health Interview Statistics  
TJ Mathews, M.S., Division of Vital Statistics  
Ryne Paulose, Ph.D., Division of Health and Nutrition Examination Surveys  
Chally Tate, Office of Information Services

# WELCOME

---

---



## Welcome, colleagues!

It is my distinct pleasure to welcome everyone to NCHS' National Conference on Health Statistics. Our biennial conference gives you the chance to expand your statistical horizons, catch up on the latest trends and data, and hear from the nation's health care and public policy leaders.

Monday's Learning Institute hands-on sessions are sold out, but our many Learning Institute lecture sessions and Conference scientific sessions will give you ample opportunity to immerse yourself in today's world of health statistics. Our conference experts will lead you through topics as diverse as Medicaid policy, electronic health records, Asian American health, Census 2010 results, linked NCHS–CMS data, and Healthy People 2020. The Conference sessions are designed to encourage dialogue and engagement.

We are extremely fortunate to have three of the nation's top leaders in health research and health policy as our keynote speakers. Dr. Harold S. Luft, Senior Investigator and former director of the Palo Alto Medical Foundation Research Institute, and author of *Total Cure: The Antidote to the Health Care Crisis*; Dr. Lisa A. Simpson, President and CEO of AcademyHealth and a nationally recognized health services researcher; and Dr. Mohammad N. Akhter, Director of the D.C. Department of Health and former Executive Director of the American Public Health Association, will address our Tuesday and Wednesday morning plenary sessions. Each is, in his or her own right, a powerful advocate for using statistical research to develop policies and plans for improving the nation's health. For the first time, we have planned joint sessions with the Substance Abuse and Mental Health Services Administration (SAMHSA) and will hear from SAMHSA Administrator Pamela S. Hyde, J.D., in a plenary session.

I also invite you to visit our Exhibit Hall to meet the outstanding NCHS researchers, statisticians, and scientists who make it possible for us to fulfill our mission. You can also meet representatives from many other statistical organizations. And of course, our popular scientific posters will once again be on display.



Edward J. Sondik, Ph.D.  
*Director, National Center for Health Statistics  
Centers for Disease Control and Prevention*

# CONFERENCE INFORMATION

---

---

## Conference Headquarters

All learning and scientific sessions, workshops, exhibits, poster sessions, and other conference activities will be held at:

**The Renaissance Washington DC  
Downtown Hotel, 999 Ninth Street NW  
Washington, DC 20001**

## Registration

Monday, August 6..... 7:00 a.m.–6:00 p.m.  
Tuesday, August 7 ..... 6:30 a.m.–5:00 p.m.  
Wednesday, August 8..... 6:30 a.m.–12:00 p.m.

## Meet NCHS Leadership

We invite you to meet with NCHS senior staff to share your thoughts about the Conference, NCHS's survey programs, future directions, or related topics. These are informal lunch break sessions; feel free to bring your lunch and let us know what you think. We want to hear from you!

Dates: ..... Tuesday, August 7,  
and Wednesday, August 8,  
Times: ..... 12:30 p.m.–1:30 p.m.  
Location: ..... Meeting room 2

## Speaker Ready Room

Sunday, August 5..... 2:00 p.m.–5:00 p.m.  
Monday, August 6..... 7:00 a.m.–5:00 p.m.  
Tuesday, August 7 ..... 7:00 a.m.–5:00 p.m.  
Wednesday, August 8..... 7:00 a.m.–1:30 p.m.  
Location: ..... Meeting room 19

## Exhibits

8:30 a.m.–4:00 p.m.

### Section 1

9:00 a.m.–10:30 a.m.; (see Pull-Out for locations)

**A1. Understanding and Analyzing Ambulatory Health Care Data From the National Ambulatory Medical Care Survey (NAMCS) and the National Hospital Ambulatory Medical Care Survey (NHAMCS): Overview and Basic Analyses (hands-on session) [LI-05]**

This session will provide a general introduction to two record-based surveys of ambulatory medical care: NAMCS and NHAMCS. The session will include an overview of both surveys, as well as basic data analyses using SAS and Stata. Participants will learn how to create analytic datasets using downloadable public-use microdata files. Programming examples will include generating weighted frequencies with and without standard errors, subsetting data to examine specific diagnoses, producing visit rates by selected characteristics, using write-in procedure data, and calculating mean time spent with physicians.

Organizer/Chair/Speaker: ..... Melissa Park, M.P.H.  
Sponsor: ..... Division of Health Care Statistics

**A2. Advanced Session: The National Health Interview Survey (NHIS) (hands-on session) [LI-12]**

Using data from NHIS, participants will learn how to merge multiple years of data files, access and use NHIS imputed income files, and use SAS-callable SUDAAN in logistic regression and other multivariate analyses. NHIS staff members will be available to assist and answer questions. Participants should have some experience using SAS and some experience with NHIS datasets. Assistance with Stata syntax and programs will also be provided.

Organizer/Chair/Speaker: ..... Brian W. Ward, Ph.D.  
Sponsor: ..... Division of Health Interview Statistics

**A3. Tools, Techniques, and Framework for Analysis of Vital Statistics Data on External Causes of Injury Death (lecture session) [LI-13]**

The International Collaborative Effort on Injury Statistics has produced two matrices that serve as a framework for the presentation and analysis of data collected on the external causes of injury and on injury diagnoses. These are, respectively, the External Cause Matrix and the Injury Mortality Diagnosis (IMD) Matrix adapted for ICD–10. The presenters will discuss the origins of these instruments, as well as their rationale and organization. Examples based on NCHS reports and microdata will highlight the usefulness of these tools in analyzing mortality data.

Organizer/Chair:..... Arialdi M. Minino, M.P.H.  
Speakers: ..... Arialdi M. Minino, M.P.H., and  
Margaret Warner, Ph.D.  
Sponsor: ..... Division of Vital Statistics

# MONDAY LEARNING INSTITUTE CONTINUED

## A4. Web Tutorial for the National Health and Nutrition Examination Survey (NHANES) and Centers for Medicare & Medicaid Services (CMS) Linked Records (hands-on session) [LI-17]

NHANES data linked with Medicare and Medicaid records from CMS were recently released for use in the NCHS Research Data Center (RDC). This hands-on session will demonstrate how to use a newly developed special-topic Web tutorial for NHANES and CMS linked records. This supplemental self-learning tool complements the existing NHANES tutorials and is designed for users of NHANES and CMS linked data. The session will provide instruction using actual examples of statistical programs and outputs. Main topics include how to (a) access NHANES and CMS linked data through RDC, (b) work with the feasibility files (publicly available limited variable files that can be downloaded directly from the NCHS website) to determine the maximum available sample size overall and for subgroups for each linked file, and (c) how to produce summary statistics using the feasibility files with SAS survey procedures and SUDAAN. Important analytic issues regarding linked data will also be discussed, including how to assess additional “nonresponse” due to records that could not be linked, the use of survey weights for linked files, and how to define an analytic cohort.

Organizer/Chair:..... Cordell Golden  
Speakers: ..... Cordell Golden; Eric Miller, Ph.D.; and  
Lisa Mirel, M.S.  
Sponsor: ..... Office of Analysis and Epidemiology

## A5. Finding Key Resources From NCHS (hands-on session) [LI-21]

This workshop will include several learning modules that should equip students and researchers to locate statistical information for health research. Participants will be asked to solve a series of scenarios using the NCHS and CDC websites as the main data sources.

Organizer/Chair/Speaker: ..... Anthony Quintana  
Sponsor: ..... Office of Information Services

**Break** 10:30 a.m.–11:00 a.m.

## Section 2

11:00 a.m.–12:30 p.m.; (see Pull-Out for locations)

## B1. An Overview of the National Health and Nutrition Examination Survey (NHANES) (lecture session) [LI-02]

This session will provide an overview of the NHANES, discuss NHANES history and selected survey design issues and describe data collection in NHANES. It will also provide examples of how data are used to inform science and policy and future directions for the survey.

Organizer/Chair/Speaker: ..... Rosemarie Hirsch, M.D.  
Sponsor: ..... Division of Health and Nutrition  
Examination Statistics

## B2. The National Survey of Residential Care Facilities (NSRCF) (hands-on session) [LI-04]

This workshop will present an overview of the first-ever NSRCF, conducted in 2010. The session will provide computer exercises that demonstrate how to access and analyze NSRCF public-use files, including the facility file and the resident file. The facility file includes data on facility characteristics, structure and physical environment, staffing, operating procedures, services offered, fees charges, and the distribution of residents at the facility level. The resident file includes data on a selected set of facility-level variables from the facility file, sociodemographic characteristics, health and physical functioning, cognitive functioning, service use, involvement in activities, and charges. The workshop is intended for experienced analysts skilled in SAS or Stata.

Organizer/Chair:..... Eunice Park-Lee, Ph.D.  
Speakers: ..... Eunice Park-Lee, Ph.D., and  
Christine Caffrey, Ph.D.  
Sponsor: ..... Division of Health Care Statistics

## B3. An Overview of the National Health Interview Survey (NHIS) (lecture session) [LI-09]

Users new to NHIS data, or those who need a refresher, are encouraged to attend this workshop, which will include a brief introduction to the history, development, purpose, data access, and current activities of NHIS. Question content, sample design, weighting, and variance estimation will also be presented, along with two examples of research using NHIS.

Organizer/Chair/Speaker: ..... Jacqueline Wilson Lucas, M.P.H.  
Sponsor: ..... Division of Health Interview Statistics

## B4. Using the National Survey of Family Growth (NSFG) (hands-on session) [LI-15]

This workshop will introduce NSFG. The session will include the topics covered in the new 2006–2010 NSFG; how to obtain the public-use, ACASI (audio computer-assisted self-interview), and contextual data files; how to find and choose the variables you need; and how to run example analyses of the male and female respondent files, and the female pregnancy file, including how to estimate variances for complex samples. Time will be reserved for answering participants' questions.

Organizer: ..... Bill Mosher, Ph.D.  
Chair: ..... Anjani Chandra, Ph.D.  
Speakers: ..... Anjani Chandra, Ph.D.;  
Casey Copen, Ph.D.;  
Kimberly Daniels, Ph.D.; and  
Gladys Martinez, Ph.D.  
Sponsor: ..... Division of Vital Statistics

## B5. Health Indicators Warehouse (hands-on session) [LI-18]

The Health Indicators Warehouse (HIW) was launched in February 2011 and contains more than 1,200 pretabulated health-related indicators at the national, state, county, and hospital referral region levels. Indicators are derived from more than 200 different data sources, including vital statistics, survey

# MONDAY LEARNING INSTITUTE CONTINUED

data, surveillance data, and Medicare and Medicaid administrative data. HIW includes indicators created for Healthy People 2020, the County Health Rankings, and 151 new utilization and quality indicators created by the Centers for Medicare & Medicaid Services. The purpose and uses of HIW will be described, and an overview of HIW functionalities will be demonstrated. Participants will learn through hands-on examples how to search for indicators; display the data in table, chart, and map formats; and download data by exporting and by using API/Web services. Time will be reserved for participants to work on their own in HIW with help from NCHS staff.

Organizers/Chairs:..... Kate Brett, Ph.D.,  
and Jeanetta Churchill, M.S.  
Speakers: ..... Kate Brett, Ph.D.; Jeanetta Churchill, M.S.;  
and Li-Hui Chen, Ph.D.  
Sponsor: ..... Office of Analysis and Epidemiology

## Lunch

12:30 p.m.–2:00 p.m.

## Section 3

2:00 p.m.–3:30 p.m.; (see Pull-Out for locations)

C1. Understanding and Analyzing Ambulatory Health Care Data From the National Ambulatory Medical Care Survey (NAMCS) and the National Hospital Ambulatory Medical Care Survey (NHAMCS): Advanced Analysis (hands-on session) [LI-08]

This session will provide an introduction to advanced programming topics and techniques for experienced users of NAMCS and NHAMCS. Participants will use SAS and Stata programming examples to conduct the following analyses: manipulate the physician weight to obtain physician-level estimates, modify the patient visit weight to approximate patient-level estimates, use linear regression to model time spent with physician, perform logistic regression to model visits for essential hypertension, and combine multiple years and ambulatory care settings to examine utilization by selected patient characteristics.

Organizer: ..... Don Cherry, M.S.  
Chair: ..... David Woodwell, M.PH.  
Speaker: ..... Don Cherry, M.S.  
Sponsor: ..... Division of Health Care Statistics

C2. The National Survey of Children With Special Health Care Needs (NS-CSHCN) and the Survey of Pathways to Diagnosis and Services (hands-on session) [LI-10]

This workshop is designed to assist users in managing SLAITS data to create analytical data sets using NS-CSHCN and the follow-up Survey of Pathways to Diagnosis and Services. Through syntax demonstrations using SAS and SUDAAN, special emphasis will be placed on teaching users how to merge files and use the proper weights.

Organizer/Chair:..... Julian Luke and  
Stephen Blumberg, Ph.D.



# MONDAY LEARNING INSTITUTE CONTINUED

---

---

Speakers: ..... Julian Luke, and Stephen Blumberg, Ph.D.  
Sponsor: ..... Division of Health Interview Statistics

## C3. Beginner's Session: The National Health Interview Survey (NHIS) (hands-on session) [LI-11]

Participants will learn how to access NHIS data, create analytic files, and run basic statistical programs. NHIS staff members will be available to assist and answer questions. Participants should have some experience using SAS, but experience with NHIS datasets is not required. Assistance with Stata syntax and programs will also be provided.

Organizer/Chair/Speaker: ..... Brian W. Ward, Ph.D.  
Sponsor: ..... Division of Health Interview Statistics

## C4. Understanding Mortality Statistics: The Importance of Cause-of-Death Certification and Coding (lecture session) [LI-14]

Understanding how cause-of-death data are collected and coded is important for the interpretation of mortality statistics. This session is divided into two parts. The first part will be a primer on how cause of death is to be reported by physicians, medical examiners, and coroners. This will be followed by a discussion of common problems with cause-of-death certification practices and how these problems affect the data. The second part will be a description of basic coding rules and procedures and how NCHS implements these according to the International Classification of Diseases (ICD). Also discussed will be changes in ICD and how these changes should be handled in the analysis of cause-of-death data.

Organizer/Chair:..... Robert Anderson, Ph.D.  
Speakers: ..... Robert Anderson, Ph.D., and  
Arialdi M. Minino, M.P.H.  
Sponsor: ..... Division of Vital Statistics

## C5. Health Data Interactive (hands-on session) [LI-19]

This session will present information on the purpose of Health Data Interactive (HDI) and give some examples of how to use the data. Information on the types of data sources used to create HDI tables, some background information on how data are tabulated to be included in the HDI tables, and the strengths and limitations of the system will also be provided. Uses of HDI will be illustrated, drawing from recent NCHS data briefs and QuickStats that used the pretabulated HDI data. Participants will then be presented with example questions that can be answered using information contained in HDI, and then shown how to find and display the results in tables, charts, and maps as well as download the data for further manipulation. Participants will be given time to work on their own as well as with the group to utilize this data tool.

Organizer: ..... Kate Brett, Ph.D.  
Chair: ..... Lara Akinbami, M.D.  
Speakers: ..... Kate Brett, Ph.D., and  
Lara Akinbami, M.D.  
Sponsor: ..... Office of Analysis and Epidemiology

## Break

3:30 p.m.–4:00 p.m.

### Section 4

4:00 p.m.–5:30 p.m.; (see Pull-Out for locations)

**D1. The International Classification of Diseases, Tenth Revision, Clinical Modification (ICD-10-CM): Understanding the Differences in ICD-9-CM and ICD-10-CM and Its Potential Impact on Data Analysis (lecture session) [LI-01]**

On October 1, 2013, the ICD-9-CM code sets used by health care agencies to report medical diagnoses and inpatient procedures will be replaced by the ICD-10-CM and ICD-10-PCS code sets. In preparation for this transition, NCHS' Classification and Public Health Data Standards Section will conduct a workshop on the changes from the ICD-9 to ICD-10 coding systems and how these changes will impact public health data analyses. The session will focus on major differences between the two code sets and will offer suggestions for assessing trends and data analysis, using examples from areas such as injury, environmental health, and chronic disease.

Organizer/Chair/Speaker: ..... Donnamaria Pickett, M.P.H., R.H.I.A.  
Sponsor: ..... Classifications and Public Health Data Standards Section

**D2. The National Hospital Discharge Survey (NHDS) (hands-on session) [LI-03]**

This workshop will provide an opportunity for users of NHDS to learn to perform trend analyses with NHDS data. Each registered participant will receive the NHDS 1979–2010 Multi-Year Data File on CD-ROM and will gain proficiency in loading the data file, reading it into SAS, creating various types of analytic variables from medical diagnoses and procedures coded on the record, and running elementary SAS procedures such as PROC FREQ, PROC MEANS, and PROC TABULATE. Although formal instruction will be provided, the session will emphasize hands-on exercises. NCHS analysts who have worked with the survey will be available to provide technical support and to answer questions about programming and statistical techniques appropriate for the data.

Organizers/Chairs: ..... Shaleah Levant, M.P.H., and Maria Owings, Ph.D.  
Speaker: ..... Shaleah Levant, M.P.H.  
Sponsor: ..... Division of Health Care Statistics

**D3. What We Eat in America: National Health and Nutrition Examination Survey (NHANES) Dietary Data—What to Know and How to Use It (hands-on session) [LI-06]**

This session will help participants gain an understanding of NHANES' complex dietary data and documentation—commonly called What We Eat in America (WWEIA)—and the technical support files of the USDA's Food and Nutrient Database for Dietary Studies. Particular emphasis will be placed on the specifics of collection and dissemination of dietary data—both data for analysis and summarized dietary data tables and briefs. Participants will learn what information on food, nutrient intakes, and sociodemographic characteristics is included in the data files that are important in dietary intake analysis. Dietary components include food codes and descriptions, WWEIA Food Categories, nutrient

values, combination codes, eating occasions, food source, day of the week, and time of day. The basic steps in using NHANES' WWEIA data will be discussed, with special attention to identifying appropriate types of analyses.

Organizers/Chairs:..... Ana Chavez, and  
Alanna J. Moshfegh, M.S., R.D.  
Speakers: ..... Joseph Goldman, M.A.;  
Randy LaComb, M.S.; and  
Alanna Moshfegh, M.S., R.D.  
Sponsor: ..... Division of Health and Nutrition  
Examination Statistics

#### D4. Using Drug Data From the National Ambulatory Medical Care Survey (NAMCS) and National Hospital Ambulatory Medical Care Survey (NHAMCS) (hands-on session) [LI-07]

This workshop is for anyone interested in using NAMCS and NHAMCS drug data. It presupposes basic familiarity with the surveys. Since the 2006 survey year, NAMCS and NHAMCS have utilized Multum Lexicon therapeutic class categories and have produced a separate data file for drug ingredients. The characteristics and structure of the drug variables will be discussed, and SAS and Stata programs will be used to explore techniques for analyzing current and trended medication data.

Organizer/Chair:..... Susan Schappert, M.A.  
Speakers: ..... Susan Schappert, M.A., and  
Frederic Selck, M.A.  
Sponsor: ..... Division of Health Care Statistics

#### D5. VitalStats—Accessing Natality Data Online (hands-on session) [LI-16]

This session will introduce VitalStats—the online data access tool for birth, infant mortality, and fetal death. The session will include training in how to use VitalStats, how to retrieve prebuilt tables, how to find and choose the variables you need to create your own tables, and how to extract created tables to Excel. Time will be reserved for answering participants' questions.

Organizers/Chairs/Speakers: ..... TJ Mathews, M.S., and  
Elizabeth Wilson, M.P.H.  
Sponsor: ..... Division of Vital Statistics

#### D6. Analysis of Data From the Early Release Program of the National Health Interview Survey (lecture session) [LI-20]

The Early Release (ER) Program of the National Health Interview Survey is a mechanism for releasing selected estimates and making selected microdata accessible on an expedited schedule, just 6 months after data collection. This program enables health practitioners, researchers, and policymakers to have the latest information on health measures that reflect issues of public health concern, and allows for monitoring of the health status of the U.S. population. Along with an overview of the evolution of the ER Program, this session will provide information on the various ER products, including reports on key health indicators, health insurance, wireless substitution,

# TUESDAY PLENARY AND SCIENTIFIC SESSIONS

Conference Schedule

Tuesday, August 7, 2012

and health care access and utilization. Presenters will also discuss applications for the preliminary quarterly microdata files that are produced as part of the ER Program.

Organizer/Chair:..... Jeannine Schiller, M.P.H.  
Speakers: ..... Jeannine Schiller, M.P.H.;  
Robin Cohen, Ph.D.; and  
Stephen Blumberg, Ph.D.  
Sponsor: ..... Division of Health Interview Statistics

## Exhibits

8:00 a.m.–4:00 p.m.

## Poster Presentation I

8:00 a.m.–12:30 p.m.

---

## Plenary I

### HEALTH STATISTICS AND THE ECONOMY

8:30 a.m.–10:00 a.m.; (see Pull-Out for locations)

#### Greetings and Introduction:

---



**Julia L. Kowaleski**

*Chief, Registration Methods Program in the Division of Vital Statistics,  
National Center for Health Statistics*

---

#### Welcome and Opening Remarks:

---



**Edward J. Sondik, Ph.D.**

*Director, National Center for Health Statistics*

# TUESDAY PLENARY AND SCIENTIFIC SESSIONS CONTINUED

---

---

## Remarks:

---

---



**Katherine K. Wallman**  
*Chief Statistician, U.S. Office of Management and Budget*

---

## Keynote Speaker:

---

---



**Harold S. Luft, Ph.D.**  
*Senior Investigator, Department of Health Policy Research, Palo Alto Medical Foundation Research Institute*

---

## Break

10:00 a.m.–10:30 a.m.

## Student Poster Author Discussion and Judging

10:00 a.m.–10:30 a.m.

---

## Concurrent Scientific Session I

10:30 a.m.–12:00 p.m.; (see Pull-Out for locations)

### SS-04. Policy Challenges for the Medicaid Program

Four papers that use NCHS data to analyze current challenges for the Medicaid program will be presented. The first paper uses data from the National Health and Nutrition Examination Survey 2005–2010 to analyze health conditions among uninsured adults aged 19–64 who currently have family income at or below 138% of the federal poverty level and are expected to become newly Medicaid-eligible under the Affordable Care Act. The second paper uses data from the 2011 National Ambulatory Medical Care Survey Electronic Medical Records Supplement to provide a current snapshot of physician capacity to provide care to those expected to become newly Medicaid-eligible, as measured by cross-state patterns in physician acceptance of new Medicaid patients. The third and fourth papers examine the effects on quality of care of two ongoing aspects of Medicaid programs that vary across states: the use of prescription drug copayments for adults, and the introduction of physician pay-for-performance (P4P) programs in Medicaid managed-care programs. The session will end with time for questions and answers.

---

# TUESDAY PLENARY AND SCIENTIFIC SESSIONS CONTINUED

Organizer: ..... Sandra Decker, Ph.D.  
Chair: ..... Chris Peterson, M.P.P.  
Speakers: ..... Sandra Decker, Ph.D.; Tianyan Hu;  
Genevieve Kenney, Ph.D.;  
Chris Peterson, M.P.P.; and  
Frederic Selck, M.A.  
Sponsor: ..... Division of Health Care Statistics

## SS-17 The Million Hearts Initiative—Monitoring Goals

Cardiovascular disease is the leading cause of death in the United States. Each year, Americans suffer more than two million heart attacks and strokes, and each day more than 2,000 people die from cardiovascular disease. Million Hearts is a national initiative to prevent one million heart attacks and strokes over 5 years. The initiative seeks to achieve its goal by improving access to effective care; improving the quality of care through Appropriate Aspirin Therapy, Blood Pressure Control, Cholesterol Management, and Smoking Cessation (ABCS); focusing clinical attention on the prevention of heart attack and stroke; activating the public to lead a heart-healthy lifestyle; and improving the prescription of and adherence to appropriate medications for ABCS. This session will provide an overview of the Million Hearts Initiative, highlight new and existing data used to monitor risk factors and events at both the population and clinical levels, and provide the perspective of health care providers.

Organizer/Chair:..... Cheryl Fryar, M.S.P.H.  
Speakers: ..... Clarice D. Brown, M.S.;  
Robert Marshall, M.D.;  
Cynthia L. Ogden, Ph.D., M.R.P.; and  
Hilary K. Wall, M.P.H.  
Sponsor: ..... Division of Health and Nutrition  
Examination Statistics

## SS-20. Results of the 2010 Census: Impact on Trends and Variations in Population and Health Statistics

The results of Census 2010 have been released, and intercensal estimates for the 2000s that incorporate these results are now available. These new and revised data have important impacts on a myriad of population statistics—including estimates of immigration and birth and death rates—and on health statistics. Presentations will describe the underlying census data and discuss how key population-based rates of birth and death, as well as measures of the incidence and prevalence of health conditions, are impacted by the new estimates. The effect of the new data (including the American Community Survey) on key measures of population change such as immigration will be assessed.

Organizer/Chair:..... Stephanie Ventura, Ph.D.  
Speakers: ..... Elizabeth Arias, Ph.D.;  
Brenda Edwards, Ph.D.;  
Brady Hamilton, Ph.D.;  
Alexa K. Jones-Puthoff; and  
Gretchen Livingston, Ph.D.  
Sponsor: ..... Division of Vital Statistics

# TUESDAY PLENARY AND SCIENTIFIC SESSIONS CONTINUED

## SS-25. Healthy People 2020: A New Era for the Nation's Disease Prevention and Health Promotion Agenda—What's New? What's Different?

In the United States, the health of the population is monitored using a wide range of measures and indicators. For the past three decades, the Healthy People initiative has served as a data-driven, science-based national agenda for disease prevention and health promotion. The Healthy People blueprint establishes benchmarks and monitors progress over time to drive improvements in the health of all Americans. In the past decade, Healthy People 2010 mapped out two overarching goals and 969 measures divided into 28 topic areas. Launched in December 2010, Healthy People 2020 establishes four overarching goals and 1,200 objectives to be tracked and assessed for progress across 42 topic areas. The history, goals, and key features all contribute to the impact of Healthy People. This session will describe the history of the Healthy People initiative, highlight changes from Healthy People 2010 to 2020, outline challenges in tracking and assessing 1,200 measures, and identify the impact Healthy People has had in the field of public health. It will also demonstrate improvements set forth by Healthy People 2020 at the national and state levels and discuss implementation tools designed to further the use of Healthy People data at the state and local levels.

Organizers: ..... Elizabeth Jackson, and Insun Kim  
Chair: ..... Rebecca Hines, M.H.S.  
Speakers: ..... David Huang, Ph.D., M.P.H., C.P.H.;  
Madeleine A. Shea, Ph.D.; and  
Don Wright, M.D., M.P.H.  
Sponsor: ..... Office of Analysis and Epidemiology

## SS-28. Linked NCHS–CMS Data: Analytic Methods and Research Examples

NCHS has developed a record linkage program designed to maximize the scientific value of the Center's population-based surveys. Recently, several NCHS surveys have been linked with Medicare and Medicaid enrollment and claims data from Centers for Medicare & Medicaid Services CMS. The NCHS–CMS linked data files enable researchers to examine the factors that influence disability, chronic disease, health care utilization, morbidity, and mortality in low-income families with children and in the elderly and disabled U.S. populations. However, an analyst using these files needs to consider many factors, including the need for reweighting, program participation, and the correspondence between the survey and claims information. The goal of this session is to highlight methodological research being conducted on the linked NCHS–CMS data. Research topics will include an evaluation of reweighting strategies for incompletely linked data; an evaluation of how often self-reported conditions appear in Medicare summary files; and approaches used to address issues encountered when using national survey data linked to a state-based administrative dataset using two examples: the association between Medicaid costs and obesity, and the percentage of children enrolled in Medicaid at any time during a 5-year period.

Organizer: ..... Cordell Golden, M.S.  
Chair: ..... Jennifer Parker, Ph.D.  
Speakers: ..... Hannah Day, Ph.D.;  
Allison Hedley Dodd, Ph.D.;  
Dean Judson, Ph.D.;  
and Alan Simon, M.D.  
Sponsor: ..... Office of Analysis and Epidemiology

# TUESDAY PLENARY AND SCIENTIFIC SESSIONS CONTINUED

## SS-37. Understanding Lesbian, Gay, Bisexual, and Transgender Health: Overview, Methodological Challenges, and Policy Implications

Recent reports have identified a range of disparities in health outcomes and health care access among sexual minority populations. This session will highlight current sexual and gender identity research at NCHS, and within the larger academic community. Specifically, health-related and measurement topics will be explored, and advancements, trends, and challenges in the field will be addressed.

Organizer: ..... Kristin Miller, Ph.D.  
Chair: ..... Virginia S. Cain, Ph.D.  
Speakers: ..... Kelly Barker; Scout, Ph.D.;  
Kristen Miller, Ph.D.; and  
AJ Pearlman, J.D.  
Sponsor: ..... Office of the Director

### Lunch

12:00 p.m.–1:30 p.m.

### Meet NCHS Senior Leadership

12:30 p.m.–1:30 p.m.

We invite you to meet with NCHS senior staff to share your thoughts about the conference, NCHS' survey program, future directions, or related topics. These will be informal sessions, so you can drop in anytime and feel free to bring your lunch. We want to hear from you!

### Poster Presentation II

1:00 p.m.–5:30 p.m.

## Concurrent Scientific Session II

1:30 p.m.–3:00 p.m.; (see Pull-Out for locations)

### SS-08. Electronic Health Records: How Will They Change the Way We Collect Data?

Electronic health record data hold the promise of providing multiple benefits for research, including access to more data elements, higher-quality data, and greater analytic power. This session will explore the ways that NCHS needs to adapt its approaches to data collection to realize these benefits. The panel will discuss the importance of data standards for ensuring data comparability across multiple sources; the stepwise transformation of manual data collection methods to take advantage of the increasing availability and standardization of electronic health record data; and the quality and completeness of data from electronic health records (preliminary results of a pilot study). The moderator will encourage dialog from the audience within and across these topics.

Organizers: ..... Monica Wolford and Anita Bercovitz  
Chair: ..... Clarice D. Brown, M.S.  
Speakers: ..... Brian Gugerty, D.N.S., R.N.;  
Harold Luft, Ph.D.; and  
Michelle Williamson, R.N., M.S.



# TUESDAY PLENARY AND SCIENTIFIC SESSIONS CONTINUED

Sponsor: ..... Division of Health Care Statistics

## SS-10. Autism, Autism Spectrum Disorder, and Other Developmental Delays: The Survey of Pathways to Diagnosis and Services

Data from the 2007 National Survey of Children's Health revealed that approximately 1 in 100 children aged 3–17 years has an autism spectrum disorder (ASD) and that nearly 40% of those ever diagnosed with an ASD did not currently have the condition. To explore possible explanations of these findings, NCHS fielded the Survey of Pathways to Diagnosis and Services (Pathways), which was sponsored by NIH's National Institute of Mental Health. Pathways provides the largest-ever nationally representative survey data set on the health care and diagnostic history of children with special health care needs (CSHCN) identified as having (or having had) an ASD, intellectual disability, or developmental delay. This survey is a follow-up to the 2009–2010 National Survey of Children With Special Health Care Needs and was conducted by NCHS using the State and Local Area Integrated Telephone Survey mechanism. Pathways gathered additional information on how CSHCN with these conditions came to be diagnosed in the past, their current diagnostic status, the types of services the children have received for the conditions, and other parental concerns such as wandering. More than 4,000 parents of CSHCN with these relatively rare but increasingly identified conditions completed a telephone interview. A data brief that accompanied the public-use data release for Pathways gives a snapshot of children who currently have an ASD. This session will discuss key analytic findings from Pathways in greater detail and will describe the design and content of the survey.

Organizer: ..... Stephen Blumberg, Ph.D.  
Chair: ..... Rosa Avila, M.S.P.H.  
Speakers: ..... Rosa Avila, M.S.P.H.;  
Stephen Blumberg, Ph.D.;  
Lisa Colpe, Ph.D., M.P.H.;  
Beverly Pringle, Ph.D.;  
and Catherine Rice, Ph.D.  
Sponsor: ..... Division of Health Interview Statistics

## SS-14. Using National Data to Understand the Health of the Asian American Population

The goal of this session is to describe the health of the Asian American population using national data from NCHS—specifically from the Division of Vital Statistics and the Division of Health Interview Statistics. The session will also review recent data collection by the National Health and Nutrition Examination Survey related to Asian American health. Future directions and needs, as well as challenges in obtaining data on this group (e.g., low participation rates and language barriers) will also be addressed.

Organizer/Chair: ..... Lisa Broitman, M.P.A.  
Speakers: ..... Lisa Broitman, M.P.A.;  
Jacqueline Wilson Lucas, M.P.H.;  
Melonie Heron, Ph.D.;  
and Kathy Lim Ko, M.S.  
Sponsor: ..... Division of Health and Nutrition  
Examination Statistics

# TUESDAY PLENARY AND SCIENTIFIC SESSIONS CONTINUED

## SS-16. Understanding Diet and Nutrition in the U.S. Population Through Various Biochemical Indicators

This session will provide information on specific biochemical indicators of diet and nutrition from National Health and Nutrition Examination Survey (NHANES) data. Nutritional biochemistry has been an important component of NHANES for many years. New NHANES laboratory tests include trans, saturated, monounsaturated, and polyunsaturated fatty acids. The second National Report on Biochemical Indicators of Diet and Nutrition in the U.S. Population was released earlier in 2012. This session will discuss this report and additional analysis on the association of sociodemographic and lifestyle factors with nutritional indicators, specifically the B vitamins.

Organizer/Chair:..... David A Lacher, M.D., M.Ed.  
Speakers: ..... Christine M. Pfeiffer, Ph.D.;  
Rosemary Schleicher, Ph.D.;  
and Hubert Vesper, Ph.D.  
Sponsor: ..... Division of Health and Nutrition  
Examination Statistics

## SS-21. Mortality Surveillance

Continuing improvements in the National Vital Statistics System's ability to quickly collect death certificate data and to code the cause of death has made mortality surveillance possible. In this session, mortality surveillance will be defined and its dual role as both a partner in traditional public health surveillance and a method for improving statistical data file quality will be discussed. Presentations will provide an overview of traditional public health surveillance and offer a vision of the role mortality surveillance might play by highlighting a new partnership between NCHS' Division of Vital Statistics and the National Center for Immunization and Respiratory Diseases' surveillance program to verify deaths due to rare vaccine-preventable diseases. Presentations will also look at other opportunities for mortality surveillance to make meaningful contributions to data quality and traditional public health surveillance. Ongoing projects within NCHS, including VIEWS and EZ-MMD, that promise to further enhance mortality data's utility as a surveillance tool, will also be discussed.

Organizer/Chair:..... Paul Sutton, Ph.D.  
Speakers: ..... Amy Blum, M.H.S.A., R.H.I.A., C.T.R.;  
Sandy Roush, M.T., M.P.H.;  
..... Paul Sutton, Ph.D.;  
and Margaret Warner, Ph.D.  
Sponsor: ..... Division of Vital Statistics

## SS-34. Data Standards in HHS Data Collection

Data standards allow for more uniform data collection and comparison across systems. Data standards are the common language that allows for sharing information, communication across disciplines, integration of disparate data systems, comparisons among datasets and across geographic areas, and linkage of data in a secure environment. Health data standards enable disease surveillance, monitoring the health and health care of the United States, performing outcomes research and providing information for decision making and policy development. This

# TUESDAY PLENARY AND SCIENTIFIC SESSIONS CONTINUED

panel will provide an overview and examples of health data standards in HHS data collection at the survey and system levels. This panel will include presentations on electronic health record standards for vital statistics, the International Classification of Disease system, demographic data standards for HHS surveys, and socioeconomic status data collection in HHS surveys.

Organizer: ..... Rashida Dorsey, Ph.D., M.P.H.  
Chair: ..... Marjorie Greenberg  
Speakers: ..... Rashida Dorsey, Ph.D., M.P.H.;  
Donna Hoyert, Ph.D.;  
Hetty Khan, M.S., B.S.N., R.N.;  
and Susan Queen, Ph.D.  
Sponsor: ..... Office of the Director

## Break

3:00 p.m.–3:30 p.m.

## Student Poster Author Discussion and Judging

3:00 p.m.–3:30 p.m.

## Concurrent Scientific Session III

3:30 p.m.–5:00 p.m.; (see Pull-Out for locations)

### SS-01. The Community as a Learning System for Health: Using Local Data to Improve Local Health

Local initiatives could be powerful engines for improving population health on a national scale. Communities need access to relevant data; the methods and skills to analyze the data and address local priorities and needs; tools to make the data analysis usable and useful; and guidance on privacy and security. This session will present a vision for strengthening local data, capacities, and uses. It will also suggest ways to support the development and functioning of community-oriented learning systems in which people, actions, results, and knowledge are dynamically interconnected to improve local health.

Organizer: ..... Debbie Jackson, M.A.  
Chair: ..... Marjorie Greenberg, M.A.  
Speakers: ..... Justine Carr, M.D.;  
Leslie Francis, J.D., Ph.D.;  
and Walter Suarez, M.D., M.P.H.  
Sponsor: ..... Classifications and Public Health Data  
Standards Section

### SS-06. The 2010 National Survey of Residential Care Facilities: A New Resource for Researchers, Providers, and Policymakers to Inform Long-term Care Policy and Practice

This session will give an overview of the National Survey of Residential Care Facilities (NSRCF). It presents selected findings using the newly available 2010 data on providers and residents, and highlights the relevance and value of NSRCF data from three key perspectives—provider,

# TUESDAY PLENARY AND SCIENTIFIC SESSIONS CONTINUED

policymaker, and researcher—giving examples of how the data have been used. The aging of the U.S. population—particularly those aged 85 and over, which compose the fastest growing age segment—will lead to an increase in the number of people who need long-term care in the future. Assisted living and other residential care communities (RCCs) are an important component of the long-term care system. Conducted by HHS, NSRCF is the first nationally representative survey of assisted living and other RCCs as small as four beds serving older people and younger persons with physical disabilities. Using a probability-based sampling design to select RCCs and current residents, interviews were completed with 2,302 communities. Nationwide, 31,100 RCCs served 733,300 residents each day in 2010.

Organizer: ..... Lauren Harris-Kojetin, Ph.D.  
Chair: ..... Manisha Sengupta, Ph.D.  
Speakers: ..... Lauren Harris-Kojetin, Ph.D.; Dave Kylo;  
Emily Rosenoff, M.P.H.;  
and Joshua Wiener, Ph.D.  
Sponsor: ..... Division of Health Care Statistics

## SS-12. Paradata: Managing Surveys and Evaluating Data

Many federal surveys face the challenge of collecting and releasing high-quality data despite stagnant or shrinking budgets. Furthermore, these operational constraints occur within an increasingly difficult survey-taking climate that has witnessed a gradual but steady decline in the accessibility of sample units and in the willingness of householders to participate. To address these challenges, many survey agencies collect paradata—information about the data collection process—to guide ongoing data collection activities (with the goal of minimizing survey error) and to evaluate the quality of collected data. The papers in this session will describe similar uses of paradata within the National Health Interview Survey, the National Health and Nutrition Examination Survey, and the National Survey of Family Growth.

Organizer/Chair:..... Jim Dahlhamer, Ph.D.  
Speakers: ..... Aaron Maitland, M.A.; Bill Mosher, Ph.D.;  
..... Robyn Sirkis; Brady T. West, Ph.D.;  
and George Zipf, M.S.  
Sponsor: ..... Division of Health Interview Statistics

## SS-23. How Measurement and Modeling of Social Determinants of Health Can Inform Actions to Reduce Disparities

Although numerous indicators of health have shown improvement in the United States in recent decades, disparities persist among populations. One of four overarching goals of Healthy People 2020 remains to “achieve health equity, eliminate disparities, and improve the health of all groups.” CDC defines social determinants of health as the complex, integrated, and overlapping social structures and economic systems (for example, the social environment, physical environment, health services, and structural and societal factors) that are responsible for most health inequities. This scientific session will provide an in-depth discussion of approaches to leveraging social determinants of health in the measurement, tracking, and reduction of health disparities, while investigating related methodological and data issues. In particular, this session will examine how social determinants of

# TUESDAY PLENARY AND SCIENTIFIC SESSIONS CONTINUED

---

---

health have contributed to the differential development of obesity among the U.S. population; how labor markets and welfare policies shape health across the life course; how the built environment and neighborhood contexts offer opportunities for public health interventions; and how improvements in record and geographic linkage efforts can better inform actions to reduce health disparities.

Organizer/Chair:..... Makram Talih, Ph.D.  
Speakers: ..... Daniel J. Kruger, Ph.D.;  
Jennifer Parker, Ph.D.;  
Whitney Robinson, Ph.D.;  
and Kate Strully, Ph.D.  
Sponsor: ..... Office of Analysis and Epidemiology

## SS-35. Monitoring the Affordable Care Act Using Population-based National Surveys

Health care access and utilization is rapidly changing in light of the Affordable Care Act (ACA) of 2010. National population surveys can be a powerful tool to monitor the effect of ACA. This session will examine changes in health insurance, health care access, and utilization using the National Health Interview Survey and the Medical Expenditure Panel Survey. This session will examine rates and trends using questions that have long histories within the surveys as well as new questions specifically designed to pick up changes in health care access and utilization resulting from ACA.

Organizer/Chair:..... Virginia S. Cain, Ph.D.  
Speakers: ..... Robin Cohen, Ph.D.;  
Renee M. Gindi, M.P.H., Ph.D.;  
Steven Hill, Ph.D.;  
and Benjamin Summers, M.D., Ph.D.  
Sponsor: ..... Office of the Director

# WEDNESDAY SCIENTIFIC SESSIONS

---

---

Conference Schedule

Wednesday, August 8, 2012

## Exhibits

8:00 a.m.–1:30 p.m.

## Poster Presentation III

8:00 a.m.–11:00 a.m.

---

## Plenary II

### OVERLOOKED AND EMERGING HEALTH TOPICS

8:30 a.m.–10:00 a.m.; (see Pull-Out for locations)

**Welcome, Announcements, and Salute to Student Poster Winners:**

---

---



**Edward J. Sondik, Ph.D.**

*Director, National Center for Health Statistics*

---

### Remarks:

---

---



**Pamela S. Hyde, J.D.**

*Administrator, Substance Abuse and Mental Health Services Administration*

---

### Keynote speaker:

---

---



**Mohammad N. Akhter**

*Director, D.C. Department of Health*

---

# WEDNESDAY SCIENTIFIC SESSIONS CONTINUED

## Keynote speaker:



**Lisa A. Simpson, M.B., B.Ch., M.P.H., F.A.A.P.**  
*President and Chief Executive Officer, AcademyHealth*

## Break

10:00 a.m.–10:30 a.m.

## Concurrent Scientific Session IV

10:30 a.m.–12:00 p.m.; (see Pull-Out for locations)

**SS-07. Monitoring Health Care Reform Through Provider-based Surveys: New Initiatives From the National Ambulatory Medical Care Survey and National Hospital Ambulatory Medical Care Survey**

In 2012, the National Ambulatory Medical Care Survey (NAMCS) and the National Hospital Ambulatory Medical Care Survey (NHAMCS) data collection were computerized and had increased sample sizes, allowing state-specific estimates and collected supplemental data on prior visits for those patients with cardiovascular disease conditions as well as the provider's treatment of patients with asthma and their attitudes and referral patterns for complementary and alternative medicine. This session will provide information on how NAMCS and NHAMCS data can help monitor the impact of health care reform. Find out how the new state-level NHAMCS estimates of length of visit, wait time, and visit volume can be used to monitor the effects of expansion of Medicaid programs on crowding in emergency departments. Discover how state-level NAMCS estimates of clinical care provided in physician offices and community health centers support activities of CDC and its health department partners to monitor the effect of expanded health coverage on the use of appropriate preventive services. Learn how capturing risk factors and appropriate preventive services for patients at risk for heart disease and stroke can assist in evaluating services to prevent major causes of death and disability.

Organizer: ..... David Woodwell, M.P.H.  
Chair: ..... Jun Ma, M.D., Ph.D.  
Speakers: ..... Farida Bhuiya, M.P.H.;  
Jun Ma, M.D., Ph.D.;  
Anjali Talwalker, M.D.;  
Shelby Taylor, M.P.H.;  
and David Woodwell, M.P.H.  
Sponsor: ..... Division of Health Care Statistics

# WEDNESDAY SCIENTIFIC SESSIONS CONTINUED

## SS-15. Cardiovascular Health Risk Behaviors Among Children and Adolescents

Certain risk behaviors during childhood are associated with the development of atherosclerosis. Although the process of atherosclerosis begins in childhood, clinical events such as myocardial infarction do not normally present until adulthood. Altering risk behaviors—for example, preventing smoking initiation and optimizing nutrition and physical activity—is a component of clinical practice guidelines to reduce cardiovascular disease, including the recently released “Expert Panel on Integrated Guidelines for Cardiovascular Health and Risk Reduction in Children and Adolescents.” This session will provide a brief overview of health risk behaviors associated with cardiovascular health in childhood and will highlight selected risk behaviors, including smoking, nutrition, and physical activity.

Organizer/Chair:..... Brian Kit, M.D., M.P.H.  
Speakers: ..... Brian King, Ph.D., M.P.H.;  
Sue Krebs-Smith, Ph.D.;  
Charlotte A. Pratt, Ph.D., R.D.;  
and Richard P. Troiano, Ph.D.  
Sponsor: ..... Division of Health and Nutrition  
Examination Statistics

## SS-22. Prevalence, Trends, and Disparities in Mental Health Disorders and Service Use Among Children and Adolescents

Mental health disorders are among the most prevalent and costly chronic childhood and adolescent conditions. About 20% of all children and adolescents are estimated to have mental health disorders causing at least mild functional impairment, and 5% to 9% are estimated to have serious emotional disturbance. However, many children and adolescents with mental health disorders do not receive treatment for these problems. NCHS collects information that can be used to monitor the prevalence of mental health conditions and the need for services among children and adolescents. The speakers will discuss the use of data from national health surveys to identify child mental health disorders, and will present estimates from several NCHS surveys to describe recent trends and disparities in the prevalence of specific mental health disorders, including autism, depression, and ADHD, as well as the use of psychotropic medications in treating these conditions.

Organizers/Chairs:..... Patricia Pastor, Ph.D.,  
and Bruce Jonas, Ph.D.  
Speakers: ..... Stephen Blumberg, Ph.D.;  
Bruce Jonas, Ph.D.;  
Sharon Larson, Ph.D.;  
and Kathleen Merikangas, Ph.D.  
Sponsor: ..... Office of Analysis and Epidemiology

## SS-31. Incorporating the Drug Abuse Warning Network Into the Emergency Department Component of the National Hospital Care Survey

The National Hospital Care Survey is a new survey conducted by NCHS that will integrate inpatient data formerly collected by the National Hospital Discharge Survey with the emergency department



# WEDNESDAY SCIENTIFIC SESSIONS CONTINUED

(ED) data formerly collected by Substance Abuse and Mental Health Services Administration's (SAMHSA) Drug Abuse Warning Network (DAWN) and the ED, outpatient department, and ambulatory surgery data formerly collected by the National Hospital Ambulatory Medical Care Survey. The advantages of survey integration to SAMHSA include: increased response rate; estimates based on a large nationally representative sample of hospital EDs; having survey operations and data collection transferred to NCHS ; and expanding information that can be collected on both drug- and mental illness-related visits. Disadvantages include only being able to provide ED visit estimates for key drugs (for example, cocaine, heroin, and marijuana) and losing the ability to produce reliable estimates on drug-related ED visits for selected metropolitan statistical areas. The following approaches to increase the number of drug-related ED visits will be tested during the pretest: extension of the reporting period from 1 month to 2 months and 3 months; collection of UB-04 billing data from nonremote reporting hospitals and use of ICD-9-CM diagnosis codes to identify drug-related cases; and review of all ED visits in remote reporting hospitals with the abstraction of all likely drug-related cases and comparing this with the collection of UB-04 billing data to identify drug-related cases. SAMHSA is also interested in expanding its traditional DAWN data collection efforts beyond drug only-related ED visits to include ED visits related to mental health issues and diagnoses.

Organizers/Chairs:..... Linda McCaig, M.P.H., and Charles Day  
Speakers: ..... Victoria Albright, M.A.; Rong Cai, M.A.;  
Charles Day; Margaret Mattson, Ph.D.;  
Linda McCaig, M.P.H.;  
and Albert Woodward, Ph.D., M.B.A.  
Sponsor: ..... Office of the Director

## SS-33. Student Research Showcase: Highlighting Exceptional Student Research in Health Statistics

This session will feature four student research studies. These studies were selected among all student abstract submissions, and were of exceptional quality, receiving high scores from the abstract reviewers. The students were invited to present their research orally during this student scientific session, in lieu of a poster presentation. Their research topics will cover nutrition, mental health, smoking, and statistical methodology.

Organizer/Chair:..... Ryne Paulose, Ph.D.  
Speakers: ..... Lauren Au, M.S., R.D.;  
Janet Gingold, M.D.;  
Elizabeth Lancet, M.P.H.;  
and Megan Schuler, M.S.  
Sponsor: ..... Office of the Director

## SS-36. Improving Civil Registration and Vital Statistics Systems Around the World

This session will provide an overview of the current status of civil registration and vital statistics (CRVS) systems around the world, with a look at challenges to achieving completeness in reporting coverage and quality of cause of death information. Past experiences in developing CRVS systems will be reviewed and the present environment of renewed interest in CRVS will be explored. This session will present various mechanisms being employed for CRVS system improvement. Discussion will include methods for conducting verbal autopsy, which is used for generating cause of death information in

# WEDNESDAY SCIENTIFIC SESSIONS CONTINUED

---

---

populations where deaths occur outside of health institutions and registration coverage is otherwise poor. The importance of physician certification in reporting causes of death will be reviewed, using examples from a successful case study in Jordan and from developed countries. Lastly, this session will examine efforts by the Millennium Villages Project to record vital events occurring in every household by incorporating community health workers as vital events reporters. This session will provide attendees with an understanding of the global status of CRVS systems and the mechanisms employed for improving them.

Organizer/Chair:..... Sam Notzon, Ph.D.  
Speakers: ..... Robert N. Anderson, Ph.D.;  
Anne Liu, M.S.P.H.;  
Erin Nichols; and Philip Setel, M.A., Ph.D.  
Sponsor: ..... Office of the Director

## Lunch

12:00 p.m.–1:30 p.m.

## Meet NCHS Senior Leadership

12:30 p.m.–1:30 p.m.

We invite you to meet with NCHS senior staff to share your thoughts about the conference, NCHS' survey program, future directions, or related topics. These will be informal sessions, so you can drop in anytime and feel free to bring your lunch. We want to hear from you!

---

## Concurrent Scientific Session V

1:30 p.m.–3:00 p.m.; (see Pull-Out for locations)

### SS-03. Measuring Electronic Health Record Adoption and Its Impact

Electronic health record (EHR) adoption has varied among physicians and hospitals leading to different experiences in health care. A goal of the 2009 Health Information Technology for Economic and Clinical Health Act (HITECH) is to advance the use of health information technology (HIT) by providing Medicare and Medicaid incentives to encourage physicians and hospitals to exchange patient information and enhance care through clinical decision support. Researchers and policymakers have examined data from the National Ambulatory Medical Care Survey (NAMCS), National Hospital Ambulatory Medical Care Survey, National Home and Hospice Care Survey, and the National Survey of Residential Care Facilities to measure use of EHR systems in physicians' offices and hospitals, and with long-term care providers. Complementing the measures of HIT adoption, the 2011 NAMCS Physician Workflow mail survey examines attitudes and beliefs of office-based physicians including perceived benefits, barriers, and the impact of policies associated with EHR system use, including the impact of EHRs on their clinical workflow. Additionally, NAMCS data has been used to measure and explain the state of health information exchange among providers, which is a HITECH policy goal. NCHS data and other data sources have been used in creative ways to track state estimates of EHR adoption.

# WEDNESDAY SCIENTIFIC SESSIONS CONTINUED

Organizer: ..... Eric Jamoom, Ph.D., M.P.H., M.S.  
Chair: ..... Chun-Ju (Janey) Hsiao, Ph.D., M.H.S.  
Speakers: ..... Michael Furukawa, Ph.D.;  
Chun-Ju (Janey) Hsiao, Ph.D., M.H.S.;  
Eric Jamoom, Ph.D., M.P.H., M.S.;  
and Vaishali Patel, Ph.D., M.P.H.  
Sponsor: ..... Division of Health Care Statistics

## SS-19. Health Data From the Revised Birth Certificate: Was It Worth the Wait?

This session will present the findings of several recent studies designed to assess the quality of the medical and health data from the 2003 revision of the birth certificate. A number of important birth certificate medical and health items newly released by NCHS will be highlighted, and changes in how these data are collected, as well as ongoing efforts to improve data quality, will be discussed. The presentations on data quality will show summary results of interviews with birth information specialists in four states. Also presented will be results of studies fielded in four vital statistics jurisdictions, which compare birth certificate data with data abstracted from hospital medical records, and in some instances with data from the Pregnancy Risk Factor and Monitoring System. The data highlights presentation will give information for a 28-state reporting area representing 66% of all 2009 births. Newly released items to be discussed include maternal body mass index, quitting smoking before pregnancy, use of the Women, Infants, and Children (WIC) program, whether the pregnancy resulted from infertility treatment, source of payment for the delivery, and maternal infections (e.g., chlamydia) and morbidities (e.g., ruptured uterus). Also discussed will be fundamental changes in how vital statistics birth data are collected—for example, the advent of electronic health records—and ongoing efforts to assess and enhance the quality of the new birth data.

Organizer/Chair:..... Joyce Martin, M.P.H.  
Speakers: ..... Patricia Dietz, Dr.P.H., M.P.H.;  
Isabelle Horon, Dr.P.H.;  
Michelle Osterman, M.P.H.;  
and Shae R. Sutton, Ph.D.  
Sponsor: ..... Division of Vital Statistics

## SS-24. Healthy Life Expectancy: Measuring Population Health Based on the Combined Effects of Fatal and Nonfatal Health Outcomes

Healthy life expectancy (HLE) is generically used to describe population health measures that combine fatal and nonfatal health outcomes. Such health measures include expected years of life in good or better health and expected years free of disability, chronic conditions, or activity limitations. In each case, a demographic or epidemiologic model is used to combine life expectancy estimates from a life table with age-specific prevalence rates of self-assessed health and chronic condition, activity limitation, or disability status to produce measures that reflect both average length and quality of remaining years of life. This session will focus on the application of HLE for: tracking the overall health of the U.S. population; summarizing health disparities at the national, regional, and state levels; showing the relationship between expected years of life without insurance and the high risk of medical need; and describing health disparities among the major subgroups of the U.S. population.

# WEDNESDAY SCIENTIFIC SESSIONS CONTINUED

Organizer: ..... Michael T. Molla, Ph.D.  
Chair: ..... Jennifer Madans, Ph.D.  
Speakers: ..... Jennifer Madans, Ph.D.;  
Erin Miller; James Kirby, M.A., Ph.D.;  
and Man-Huei Chang, M.P.H.  
Sponsor: ..... Office of Analysis and Epidemiology

## SS-29. Does Social Media Have a Role in Federal Statistics?

Social media is a powerful communication tool that can be used to turn communication into interactive dialogue among organizations, communities, and individuals. This session will bring together a panel of representatives from federal statistical agencies to discuss what is working, what is not working, and how social media can help improve survey participation rates. Topics will include discussions on social media governances, case studies on the effective use of social media for the enhancement of data dissemination activities, and improvement of survey participation rates.

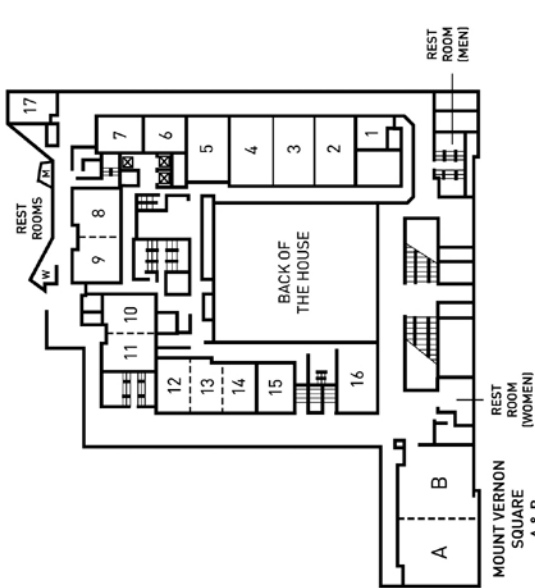
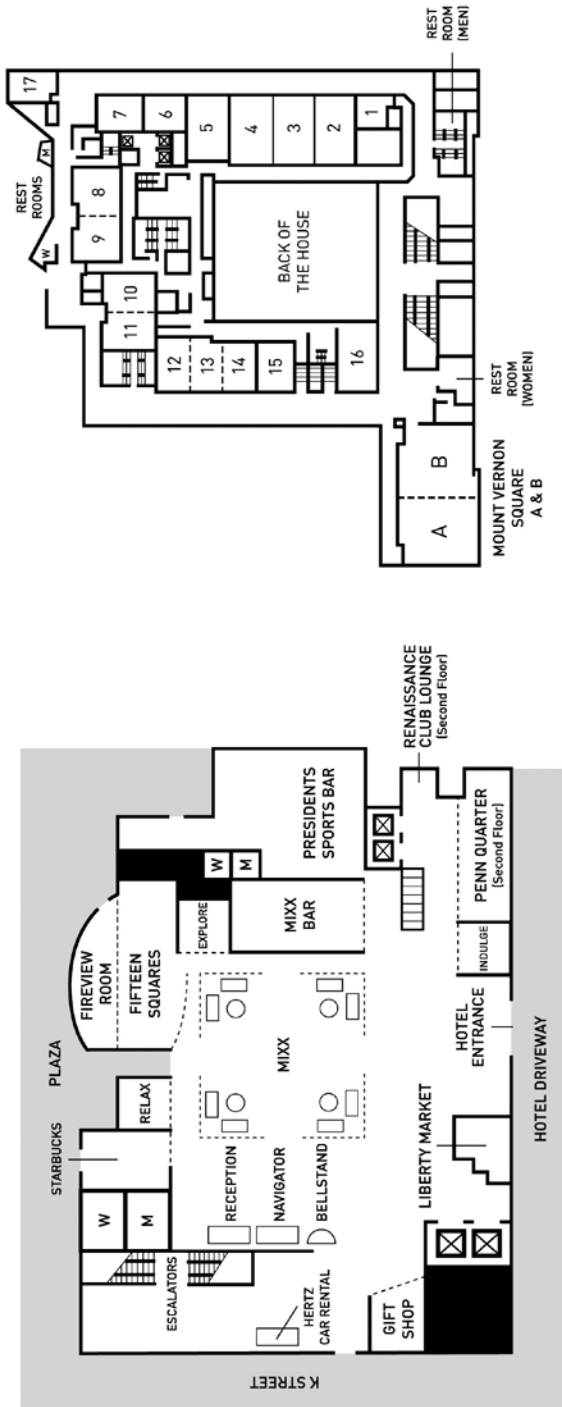
Organizers/Chairs: ..... Sharon Ramirez and Elom Lawson  
Speakers: ..... Tori Garten; Lauren Shaw;  
Deanna Stephens, M.P.A.;  
and Tammy Stewart-Prather, M.A.  
Sponsor: ..... Office of Information Services

## SS-32. To Be or Not To Be: The Dilemma of Suicide in America

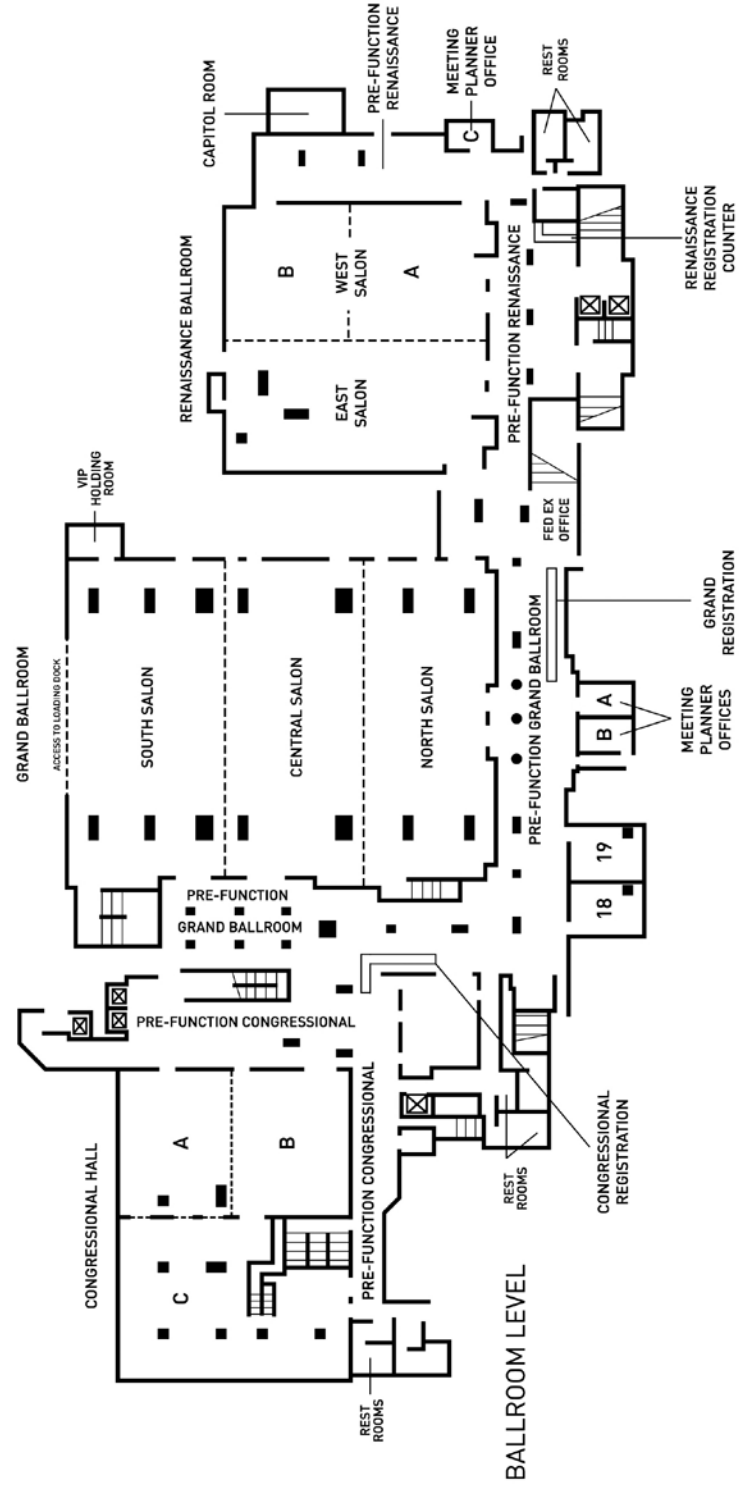
Suicide is a major public health issue in the United States. Each year, more Americans die by suicide than die in motor vehicle traffic events. With nearly 37,000 suicides occurring in 2009, suicide now ranks as the 10th leading cause of death in the United States. As tragic as they are, deaths reveal only a portion of the problem. Of additional concern is the number of people who have attempted suicide or have suicidal thoughts. Estimates from the National Hospital Ambulatory Medical Care Survey suggest that each year approximately 420,000 individuals are seen in emergency departments for attempted suicide or self-inflicted injury. This session will describe suicide trends, patterns, and populations at risk using a variety of national surveillance systems, and provide recommendations on how these data can be used to inform suicide prevention efforts.

Organizers/Chairs: ..... Joe Gfroerer and  
Holly Hedegaard, M.D., M.S.P.H.  
Speakers: ..... Cynthia Claassen, Ph.D.;  
Alex Crosby, M.D.;  
Holly Hedegaard, MD, M.S.P.H.;  
and Eileen Zeller, M.P.H.  
Sponsor: ..... Office of the Director

# HOTEL INFORMATION



MEETING ROOM LEVEL



# MONDAY CONFERENCE AT A GLANCE



**Exhibits** 8:30 a.m.–4:00 p.m. **Breaks** 10:30 a.m.–11:00 a.m. and 3:30 p.m.–4:00 p.m.  
**Lunch** 12:30 p.m.–2:00 p.m.

9:00 a.m.– 10:30 a.m.	11:00 a.m.– 12:30 p.m.	2:00 p.m.– 3:30 p.m.	4:00 p.m.– 5:30 p.m.
<b>A1: Mount Vernon Square A</b> Understanding and Analyzing Ambulatory Health Care Data From the National Ambulatory Care Survey (NAMCS) and the National Hospital Ambulatory Medical Care Survey (NHAMCS): Overview and Basic Analysis (hands-on) [LI-05]	<b>B1: Grand Ballroom Central</b> An Overview of the National Health and Nutrition Examination Survey (lecture) [LI-02]	<b>C1: Grand Ballroom South</b> Understanding and Analyzing Ambulatory Health Care Data From the National Ambulatory Medical Care Survey (NAMCS) and the National Hospital Ambulatory Medical Care Survey (NHAMCS): Advanced Analysis (hands-on) [LI-08]	<b>D1: Grand Ballroom Central</b> The International Classification of Diseases, Tenth Revision, Clinical Modification (ICD-10-M): Understanding the Differences Between ICD-9-CM and ICD-10-CM and Its Potential Impact on Data Analysis (lecture) [LI-01]
<b>A2: Mount Vernon Square B</b> Advanced Session: The National Health Interview Survey (NHIS) (hands-on) [LI-12]	<b>B2: Mount Vernon Square A</b> The National Survey of Residential Care Facilities (NSRCF) (hands-on) [LI-04]	<b>C2: Meeting Rooms 12–14</b> The National Survey of Children With Special Health Care Needs (NS-CSHCN) and the Survey of Pathways to Diagnosis and Services (hands-on) [LI-10]	<b>D2: Meeting Rooms 12–14</b> The National Hospital Discharge Survey (NHDS) (hands-on) [LI-03]
<b>A3: Grand Ballroom Central</b> Tools, Techniques, and Framework for Analysis of Vital Statistics Data on External Causes of Injury Death (lecture) [LI-13]	<b>B3: Grand Ballroom North</b> An Overview of the National Health Interview Survey (NHIS) (lecture) [LI-09]	<b>C3: Mount Vernon Square A</b> Beginner’s Session: The National Health Interview Survey (NHIS) (hands-on) [LI-11]	<b>D3: Mount Vernon Square B</b> What We Eat in America: National Health and Nutrition Examination Survey (NHANES) Dietary Data—What to Know and How to Use It (hands-on) [LI-06]
<b>A4: Grand Ballroom South</b> Web Tutorial for the National Health and Nutrition Examination Survey (NHANES) and Centers for Medicare & Medicaid Services (CMS) Linked Records (hands-on) [LI-17]	<b>B4: Grand Ballroom South</b> Using the National Survey of Family Growth (NSFG) (hands-on) [LI-15]	<b>C4: Grand Ballroom Central</b> Understanding Mortality Statistics: The Importance of Cause-of-Death Certification and Coding (lecture) [LI-14]	<b>D4: Grand Ballroom South</b> Using Drug Data From the National Ambulatory Medical Care Survey and National Hospital Ambulatory Medical Care Survey (hands-on) [LI-07]
<b>A5: Meeting Rooms 12–14</b> Finding Key Resources From NCHS (hands-on) [LI-21]	<b>B5: Mount Vernon Square B</b> Health Indicators Warehouse (hands-on) [LI-18]	<b>C5: Mount Vernon Square B</b> Health Data Interactive (hands-on) [LI-19]	<b>D5: Mount Vernon Square A</b> VitalStats—Accessing Natality Data Online (hands-on) [LI-16]
			<b>D6: Grand Ballroom North</b> The Analysis of Data from the Early Release Program of the National Health Interview Survey (NHIS) [LI-20]

# TUESDAY CONFERENCE AT A GLANCE



**Exhibits** 8:00 a.m.–4:00 p.m. **Poster Presentation I** 8:00 a.m.–12:30 p.m. **Breaks** 10:00 a.m.–10:30 a.m. and 3:00 p.m.–3:30 p.m. **PP II** 1:00 p.m.–5:30 p.m. **Lunch** 12:00 p.m.–1:30 p.m. **Meet NCHS Senior Leadership** 12:30 p.m.–1:30 p.m. **Student Poster/Judging** 10:00 a.m.–10:30 a.m. and 3:00 p.m.–3:30 p.m.

8:30 a.m.– 10:00 a.m.	10:30 a.m.– 12:00 p.m.	1:30 p.m.– 3:00 p.m.	3:30 p.m.– 5:00 p.m.
<b>Plenary I:</b> <b>Grand Ballroom</b> Health Statistics and the Economy	<b>SS-04: M.Vernon Square A</b> Policy Challenges for the Medicaid Program <b>SS-17: Grand Ballroom South</b> The Million Hearts Initiative – Monitoring Goals	<b>SS-08: Meeting Rooms 12–14</b> Electronic Health Records: How Will They Change the Way We Collect Data?	<b>SS-01: Grand Ballroom Central</b> The Community as a Learning System for Health: Using Local Data to Improve Local Health
Greetings and Introduction: <b>Julia L. Kowaleski</b> <i>Chief, Registration Methods Program in the Division of Vital Statistics, National Center for Health Statistics</i>	<b>SS-20: Grand Ballroom Central</b> Results of the 2010 Census: Impact on Trends and Variations in Population and Health Statistics	<b>SS-10: Grand Ballroom South</b> Autism, Autism Spectrum Disorder, and Other Developmental Delays: The Survey of Pathways to Diagnosis and Services	<b>SS-06: Meeting Rooms 12–14</b> The 2010 National Survey of Residential Care Facilities: A New Resource for Researchers, Providers, and Policymakers to Inform Long-term Care Policy and Practice
Welcome and Opening Remarks: <b>Edward J. Sondik, Ph.D.</b> <i>Director, National Center for Health Statistics</i>	<b>SS-25: Grand Ballroom North</b> Healthy People 2020: A New Era for the Nation’s Disease Prevention and Health Promotion Agenda – What’s New? What’s Different?	<b>SS-14: Mount Vernon Square B</b> Using National Data to Understand the Health of the Asian American Population	<b>SS-12: Mount Vernon Square A</b> Paradata: Managing Surveys and Evaluating Data
Remarks: <b>Katherine K. Wallman</b> <i>Chief Statistician, U.S. Office of Management and Budget</i>	<b>SS-28: Meeting Rooms 12–14</b> Linked NCHS-CMS Data: Analytic Methods and Research Examples	<b>SS-16: Grand Ballroom Central</b> Understanding Diet and Nutrition in the U.S. Population Through Various Biochemical Indicators	<b>SS-23: Grand Ballroom South</b> How Measurement and Modeling of Social Determinants of Health Can Inform Actions to Reduce Disparities
Keynote Speaker: <b>Harold S. Luft, Ph.D.</b> <i>Senior Investigator, Department of Health Policy Research, Palo Alto Medical Foundation Research Institute</i>	<b>SS-37: M.Vernon Square B</b> Understanding Lesbian, Gay, Bisexual, and Transgender Health: Overview, Methodological Challenges, and Policy Implications	<b>SS-21: Grand Ballroom North</b> Mortality Surveillance <b>SS-34: M.Vernon Square A</b> Data Standards in HHS Data Collection	<b>SS-35: Grand Ballroom North</b> Monitoring the Affordable Care Act Using Population-based National Surveys

**Exhibits** 8:00 a.m.–1:30 p.m. **Poster Presentation III** 8:00 a.m.–1:00 p.m. **Break** 10:00 a.m.–10:30 a.m.  
**Lunch** 12:00 p.m.–1:30 p.m. **Meet NCHS Senior Leadership** 12:30 p.m.–1:30 p.m.

8:30 a.m.– 10:00 a.m.	10:30 a.m.– 12:00 p.m.	1:30 p.m.– 3:00 p.m.
Plenary II: <b>Grand Ballroom South</b> Overlooked and Emerging Health Topics	SS-07: <b>Grand Ballroom South</b> Monitoring Health Care Reform Through Provider-based Surveys: New Initiatives From the National Ambulatory Medical Care Survey and National Hospital Ambulatory Medical Care Survey	SS-03: <b>Meeting Rooms 12–14</b> Measuring Electronic Health Record Adoption and Its Impact
Welcome, Announcements, and Salute to Student Poster Winners: <b>Edward J. Sondik, Ph.D.</b> <i>Director, National Center for Health Statistics</i>	SS-15: <b>Meeting Rooms 12–14</b> Cardiovascular Health Risk Behaviors Among Children and Adolescents	SS-19: <b>Grand Ballroom Central</b> Health Data From the Revised Birth Certificate: Was It Worth the Wait?
Remarks: <b>Pamela S. Hyde, J.D.</b> <i>Administrator, Substance Abuse and Mental Health Services Administration</i>	SS-22: <b>Mount Vernon Square A</b> Prevalence, Trends, and Disparities in Mental Health Disorders and Service Use Among Children and Adolescents	SS-24: <b>Grand Ballroom South</b> Healthy Life Expectancy: Measuring Population Health Based on the Combined Effects of Fatal and Nonfatal Health Outcomes
Keynote Speaker: <b>Mohammed N. Akhter M.D., M.P.H.</b> <i>Director, DC Department of Health</i>	SS-31: <b>Grand Ballroom North</b> Incorporating the Drug Abuse Warning Network into the Emergency Department Component of the National Hospital Care Survey	SS-29: <b>Mount Vernon Square B</b> Does Social Media Have a Role in Federal Statistics?
Keynote Speaker: <b>Lisa A. Simpson M.B., B.Ch, M.P.H., F.A.A.P.</b> <i>President and Chief Executive Officer, AcademyHealth</i>	SS-33: <b>Mount Vernon Square B</b> Student Research Showcase: Highlighting Exceptional Student Research in Health Statistics	SS-32: <b>Grand Ballroom North</b> To Be or Not To Be: The Dilemma of Suicide in America
	SS-36: <b>Grand Ballroom Central</b> Improving Civil Registration and Vital Statistics Systems Around the World	



# PLENARY SPEAKERS BIOS

---

---

## PLENARY SESSION I:



### **Edward J. Sondik, Ph.D.**

*Director, National Center for Health Statistics*

Dr. Sondik serves as Director of the National Center for Health Statistics (NCHS), the nation's principal health statistics agency and one of the federal centers that make up the Centers for Disease Control and Prevention. NCHS monitors the nation's health through research and analysis in health and vital statistics, epidemiology, and related health and statistical sciences. Under Dr. Sondik's direction, NCHS also works to anticipate and plan for future data needs, and to develop the technologies and analytic tools necessary to meet the nation's health statistics needs. As NCHS Director, Dr. Sondik serves on the Interagency

Committee on Statistical Policy, whose membership includes the leaders of the nation's 13 designated federal statistical agencies. He also serves as Senior Advisor on Health Statistics to the Secretary of the Department of Health and Human Services (HHS), providing technical and policy advice on statistical and health information issues. In addition, he is a member of the HHS Data Council, the body that reviews the Department's data policy and related issues.

Prior to his appointment as Director of NCHS and Senior Advisor in 1996, Dr. Sondik held multiple positions with the National Cancer Institute (NCI), including Chief of the Biometrics and Operations Research Branch; Deputy Director of the Division of Cancer Prevention and Control; and Acting Director. While at NCI, he had oversight of the SEER program—the pioneer cancer registry system. Dr. Sondik also served on the staff of the National Heart, Lung, and Blood Institute of the National Institutes of Health, where he worked on clinical trial design. Dr. Sondik's background is in mathematics and statistics, and the discipline of operations research. He received B.S. and M.S. degrees in electrical engineering from the University of Connecticut, focusing on control systems, computers, and operations research. He received his Ph.D. in electrical engineering from Stanford University, where he also served on the faculty.

---

## Remarks



### **Katherine K. Wallman**

*Chief Statistician, U.S. Office of Management and Budget*

Katherine Wallman currently serves as Chief Statistician at the United States Office of Management and Budget. In this capacity, she provides policy oversight, establishes priorities, advances long-term improvements, and sets standards for a federal statistical establishment that comprises more than 70 agencies spread across every cabinet department and accounts for more than \$5 billion in annual expenditures. As the Chief Statistician of the United States, Ms. Wallman

represents the U.S. government in international statistical organizations, including the United Nations and the Organisation for Economic Co-operation and Development. During her tenure as the United

# PLENARY SPEAKERS BIOS CONTINUED

---

---

States' Chief Statistician, Ms. Wallman has increased collaboration among the agencies of the U.S. statistical system, fostered improvements in the scope and quality of the Nation's official statistics, strengthened the protections for confidential statistical information, and initiated changes that have made the products of the system more accessible and usable. Prior to assuming the position of Chief Statistician in 1992, Ms. Wallman served for more than a decade as Executive Director of the Council of Professional Associations on Federal Statistics, a coalition of organizations concerned with fostering communication among users and producers of federal statistics and improving the utility and accessibility of the nation's statistical resources. Earlier in her career, Ms. Wallman worked for several years in the Office of Federal Statistical Policy and Standards, as well as in the National Center for Education Statistics. Her special interests include increasing cooperation between the several levels of government in the production of national statistics, strengthening the interface between academic and government statisticians, and enhancing the statistical literacy of the public. Ms. Wallman, twice honored as a Presidential Meritorious Executive, is an elected member of the International Statistical Institute, a Fellow of the American Statistical Association and the American Association for the Advancement of Science, and a Founder Member of the International Association for Official Statistics. In 1992, she served as President of the American Statistical Association, and in 2007 she was honored with the association's Founders Award. Ms. Wallman, who served as Chairman of the United Nations Statistical Commission during 2004 and 2005, has recently completed her second term as Chairman of the Conference of European Statisticians, United Nations Economic Commission for Europe, and has been elected to continue her service on the organization's Bureau.

---

## Health Statistics and the Economy



### **Harold S. Luft, Ph.D.**

*Senior Investigator, Department of Health Policy Research, Palo Alto Medical Foundation Research Institute*

Dr. Luft served as Director of the Palo Alto Medical Foundation Research Institute from 1993 through 2007. He is also the Caldwell B. Esselstyn Professor Emeritus of Health Policy and Health Economics at the Philip R. Lee Institute for Health Policy Studies (IHPS) at the University of California, San Francisco (UCSF). Dr. Luft's experience in research and teaching covers a wide range of areas, including medical care utilization, health maintenance organizations, hospital market competition, volume, quality and outcomes of hospital care, risk assessment and risk adjustment, and health care market reform. He has been involved in postdoctoral training for more than 35 years, having served as director of the IHPS postdoctoral program and associate director of the Health and Society Scholars program sponsored jointly by UCSF and the University of California, Berkeley. Dr. Luft is a member of the Institute of Medicine (IOM), and served 6 years on the IOM Council. He was a member of and chaired the National Advisory Council of the Agency for Health Care Policy and Research (now the Agency for Healthcare Research and Quality). He also served on the board of AcademyHealth for 10 years and was co-editor-in-chief of the journal *Health Services Research*. Dr. Luft has authored, coauthored, or edited five books, including *Total Cure: The Antidote to the Health Care Crisis* (Harvard University Press, 2008) and more than 200 articles in scientific journals. Dr. Luft received his A.B., M.A., and Ph.D. in economics, specializing in health sector economics and public finance, from Harvard University.

## PLENARY SESSION II: Remarks



**Pamela S. Hyde, J.D.**

*Administrator, Substance Abuse and Mental Health Services Administration*

Pamela Hyde was nominated by President Barack Obama and confirmed by the U.S. Senate in November 2009 as Administrator of the Substance Abuse and Mental Health Services Administration (SAMHSA), a public health agency within the Department of Health and Human Services. The agency's mission is to reduce the impact of substance abuse and mental illness on America's communities. Ms. Hyde is an attorney and comes to SAMHSA with more than 30 years experience in management and consulting for public health care and human services agencies. She has served as a state mental health director, state human services director, and city housing and human services director, as well as CEO of a private nonprofit managed behavioral health care firm. In 2003, she was appointed cabinet secretary of the New Mexico Human Services Department by Governor Bill Richardson, where she worked effectively to provide greater access to quality health services for everyone.

Ms. Hyde is a member of or has served as a consultant to many national organizations, including the John D. and Catherine T. MacArthur Foundation, the American College of Mental Health Administration, the President's New Freedom Commission on Mental Health, and the Department of Justice. She has been recognized by many groups, including the American Medical Association, the National Governor's Association, and the Seattle Management Association, for her creativity and leadership in policy and program development and in organizational management issues.

---

## Overlooked and Emerging Health Topics



**Mohammad N. Akhter, M.D., M.P.H.**

*Director, D.C. Department of Health*

Under Dr. Akhter's leadership, the D.C. Department of Health is focused on improving the quality of health care in the District of Columbia. His top priorities include implementation of health care reform, expansion of HIV services and making them available on demand, supporting training programs for D.C. residents to qualify for jobs in health care, and improving access to quality care across the District. Prior to joining the Department in January 2011, Dr. Akhter was a Professor at Howard University College of Medicine and served from 2002 to 2005 as Senior Associate Dean for Public and International Health. Before joining the Howard University faculty, Dr. Akhter was Executive Director of the National Medical Association, where he focused on health care reforms and eliminating health

# PLENARY SPEAKERS BIOS CONTINUED

---

---

disparities. Dr. Akhter was Executive Director of the American Public Health Association (APHA) from 1997 to 2002. In 2007, he was honored with APHA's oldest and most prestigious award, the Sedgwick Memorial Medal for Distinguished Service in Public Health. The Sedgwick Medal is awarded annually to an individual who has demonstrated a distinguished record of service to public health and who has tirelessly worked to advance public health knowledge and practice. From 1991 to 1994, Dr. Akhter was Commissioner of Public Health for the District of Columbia. He subsequently served as a Senior Advisor in the Department of Health and Human Services' Agency for Health Care Policy and Quality. Dr. Akhter received his medical degree from King Edward Medical College in Lahore, Pakistan, and a master's degree in public health from The Johns Hopkins University. He is board certified by the American Board of Preventive Medicine.

---

## Overlooked and Emerging Health Topics



**Lisa Simpson, M.B., B.Ch., M.P.H., F.A.A.P.**  
*President and Chief Executive Officer, AcademyHealth*

A nationally recognized health policy researcher and pediatrician, Dr. Simpson is a passionate advocate for the translation of research into policy and practice. Her research focuses on improving the performance of the health care system and includes studies of the quality and safety of care, health and health care disparities, and the health policy and system response to childhood obesity.

Before joining AcademyHealth, Dr. Simpson was director of the Child Policy Research Center at Cincinnati Children's Hospital Medical Center, and professor of pediatrics in the Division of Health Policy and Clinical Effectiveness, Department of Pediatrics, University of Cincinnati. She served as Deputy Director of the Agency for Healthcare Research and Quality from 1996 to 2002. Dr. Simpson serves on the Robert Wood Johnson Clinical Scholars Program National Advisory Council and on the editorial boards of the *Journal of Comparative Effectiveness Research* and *Frontiers in Public Health Systems and Services Research*. Dr. Simpson earned her undergraduate and medical degrees at Trinity College (Dublin, Ireland), a master's degree in public health at the University of Hawaii, and completed a postdoctoral fellowship in health services research and health policy at the University of California, San Francisco.

# EXHIBITS

---

---

## Location and Hours

The Exhibit Hall is located in the Congressional Hall of the Renaissance Downtown Hotel.  
The exhibit hours are:

Monday, August 6.....	8:30 a.m.–4:00 p.m.
Tuesday, August 7.....	8:00 a.m.–4:00 p.m.
Wednesday, August 8.....	8:00 a.m.–1:30 p.m.

---

## Exhibitors

### National Center for Health Statistics (NCHS) Main Exhibit

Booth no. 00

The 2012 National Conference on Health Statistics' NCHS exhibit, "Building Global Partnerships for Better Health Data and Statistics," highlights NCHS' collaborative partnerships and activities across the globe. Two new reports showcasing such partnerships—*America's Children: Key Indicators of Well-being, 2012*, and *Older Americans: Key Indicators of Well-being, 2012*—will be available at the booth. Visitors can also obtain a brochure containing a compilation of NCHS' collaborative efforts. NCHS staff will be available at the exhibit throughout the conference to answer your questions.

### NCHS Classifications and Public Health Data Standards

Booth no. 06

This exhibit, sponsored by the NCHS Classifications and Public Health Data Standards staff, is aptly named "Data Standards as the Building Blocks of Information Systems." Our group is the focal point for assessing and supporting a wide array of public health data standards by representing NCHS at various standards development organizations and standards-related activities, serving as the Head of the World Health Organization Collaborating Centre for the Family of International Classifications for North America, and serving as the Executive Secretariat to the National Committee on Vital and Health Statistics. The exhibit displays current and past activities in these areas of health data standardization.

### National Death Index (NDI)

Booth no. 13

The NDI is a central computerized index of death record information on file in state vital statistics offices. Working with the states, NCHS established the NDI as a resource to aid epidemiologists and other health and medical investigators with mortality ascertainment activities.

# EXHIBITS CONTINUED

---

---

## **National Health and Nutrition Examination Survey (NHANES)**

Booth no. 11

NHANES is a program of studies designed to assess the health and nutritional status of adults and children in the United States. The NHANES program began in the early 1960s and has been conducted as a series of surveys focusing on various population groups and health topics. In 1999, the survey became continuous, with a changing focus on a variety of health and nutrition measurements to address emerging needs. NHANES, which is unique in that it combines interviews and physical examinations, examines a nationally representative sample of about 5,000 persons in 15 counties across the country each year.

## **Division of Health Care Statistics (DHCS)**

Booth nos. 20–23

DHCS implements the National Health Care Surveys, which are designed to answer key questions of interest to health care policymakers, public health professionals, and researchers about the use of health care resources, the quality and safety of health care, access to health care, and disparities in health care services in the United States. The surveys are nationally representative, provider-based, and cover a broad spectrum of health care settings from physician offices, community health centers, inpatient units, and emergency departments to nursing homes, home and hospice care agencies, assisted living or residential care facilities, and adult day services centers. Two new surveys are being launched to expand our knowledge of health care practice across different settings. Computers will be available for hands-on exploration of the National Health Care Surveys.

## **National Study of Long-term Care Providers (NSLTCP)**

Booth no. 24

The National Center for Health Statistics is launching the National Study of Long-term Care Providers (NSLTCP). NSLTCP will replace the previously conducted National Nursing Home Survey, National Home and Hospice Care Survey, and most recently, the National Survey of Residential Care Facilities. NSLTCP will provide statistical information about the supply and use of major types of paid, regulated long-term care (LTC) providers in the United States. Survey questionnaires will gather information on adult day services centers and assisted-living and other residential care facilities, and administrative data will be collected on nursing homes, home health care agencies, and hospices. The information produced will provide national- and state-level estimates, where possible. NSLTCP, which will be conducted every other year, is intended to enable efficient and timely monitoring of the diverse and evolving field of LTC and to help address the nation's information needs to inform future LTC policy.

## **National Health Interview Survey (NHIS)**

Booth no. 10

The NHIS exhibit will offer conference attendees an opportunity to meet staff experts, see and discuss our latest products, and explore NHIS products on the Web.

# EXHIBITS CONTINUED

---

---

## **Health, United States**

Booth no. 05

Health, United States is an annual report on national trends in health statistics. Stop by our booth to peruse Health, United States, 2011; obtain copies of our newest publication, Health, United States: In Brief; and see a demonstration of our website. Staff members will be available to answer questions concerning the reports and discuss the key uses of our data.

## **Healthy People 2020**

Booth no. 03

For three decades, the Healthy People initiative has been at the forefront of health promotion and disease prevention in the United States. Healthy People provides a comprehensive set of national 10-year health promotion and disease prevention objectives aimed at improving the health of all Americans. This year's conference exhibit will focus on Healthy People 2020, which tracks approximately 1,200 objectives organized into 42 topic areas, as well as the recently completed Healthy People Final Review. Subject matter experts will be available to discuss all aspects of Healthy People, including development of objectives, establishing baselines and targets, describing the broad range of data sources used to track Healthy People objectives, programming the data used for monitoring trends, and developing a Healthy People database to store and share data.

## **Research Data Center (RDC)**

Booth no. 04

The NCHS Research Data Center allows researchers access to restricted NCHS data, as well as restricted data from a variety of groups within the Department of Health and Human Services.

## **State and Local Area Integrated Telephone Survey (SLAITS)**

Booth no. 09

At the SLAITS exhibit, experts will be available to discuss the latest products and to encourage attendees to explore SLAITS products available online.

## **Vital Statistics**

Booth no. 12

The Division of Vital Statistics has several major data programs that help describe many of the major life events of people in the United States. The National Vital Statistics System (NVSS) is the oldest and most successful example of intergovernmental data sharing in public health. Shared relationships, standards, and procedures form the mechanism by which NCHS collects and disseminates national statistics on births and deaths. The National Survey of Family Growth (NSFG) supplements and complements the NVSS data by providing a significant part of CDC's data on public health surveillance of women, infants, and children, with statistics on pregnancy and reproductive health from 1973 forward.

## Other Government

### **Integrated Health Interview Series (IHIS)**

Booth no. 08

IHIS is a consistently coded and fully documented version of National Health Interview Survey data from 1963 to the present. IHIS was created by researchers at the University of Minnesota, with funding from the National Institutes of Health, and is available free via the Internet.

### **Substance Abuse and Mental Health Data Archive (SAMHDA)**

Booth no. 19

SAMHDA provides free access to behavioral health research data and online analysis tools. Learn about this data archive at the SAMHDA booth, sponsored by the Substance Abuse and Mental Health Services Administration.

### **Surveillance, Epidemiology, and End Results (SEER) Program**

Booth no. 16

The SEER program of the National Cancer Institute is an authoritative source of information on cancer incidence and survival in the United States. SEER collects and publishes data on cancer incidence, prevalence, lifetime risk, and survival from population-based cancer registries covering approximately 28% of the U.S. population, as well as cancer mortality for the entire U.S. population. The mortality data reported by SEER are provided by NCHS. Data on more than 7 million in situ and invasive cancer cases are included in the SEER database, with more than 400,000 cases being added each year from the SEER coverage areas. Through collaborative efforts between SEER and other organizations, current information on cancer occurrence and trends in the United States is reported annually. SEER data serve as a research resource for more than 7,000 publications and are frequently used by researchers, clinicians, public health officials, legislators, policymakers, community groups, and the public.

### **U.S. Census Bureau**

Booth no. 15

The U.S. Census Bureau will present information and data products relating to health insurance coverage, disability, and the well-being of the U.S. population.



## Nongovernment

### DevInfo

Booth no. 17

DevInfo is a free database system that has been endorsed by the United Nations to help countries monitor and track progress towards achieving the Millennium Development Goals. The DevInfo Initiative is managed by UNICEF on behalf of the UN system. The software has found numerous applications beyond its original aim—including monitoring and evaluation, mapping or Geographic Information Systems (GIS), data dissemination, and public health advocacy. It is being used extensively in 124 countries to monitor and track progress towards human development and to support research, data analysis, visualization, and data dissemination objectives.

### National Profile of Local Health Departments (LHDs) Study

Booth no. 01

The National Profile of Local Health Departments (Profile) is a nationwide study of all U.S. LHDs that provides a comprehensive and accurate picture of LHD infrastructure and practice. The information collected by Profile covers a wide range of topics and is used by practitioners and policymakers at the local, state, and federal levels, as well as by researchers, the media, and educators. Visitors to this exhibit will see a demonstration of Profile-IQ, a user-friendly online data query system designed to generate up-to-date statistics on LHD finance, workforce, and activities, based on the 2010 Profile study.

### Institute for Health Metrics and Evaluation (IHME)

Booth no. 18

Find out who is living the longest and who is falling behind at the IHME exhibit. IHME has the latest country-by-country estimates for life expectancy from 1989 to 2009. Explore our data visualizations that allow you to compare life expectancy in U.S. counties with each other and with other countries, and learn about IHME's Global Burden of Disease study, which will produce a new estimator measuring the impact of hundreds of diseases, injuries, and risk factors in 21 regions around the world over two decades. This study is being carried out in collaboration with more than 800 researchers and includes more than 220 conditions and injuries and more than 40 risk factors.

### Privacy Analytics, Inc.

Booth no. 14

Privacy Analytics is the only company with a commercially available HIPAA-compliant Masking and De-Identification software product. Privacy Analytics leverages its software to provide HIPAA De-Identification and Re-identification Risk Certification. It also provides technology and a Secure Linking protocol that enables disparate organizations to securely link sensitive information in a manner which does not divulge Personal Health Information. Company founder, Dr. Khaled El Emam

# EXHIBITS CONTINUED

---

---

is one of only a handful of individuals worldwide known to be qualified to de-identify personal health information for secondary use under the HIPAA Privacy Rule Statistical Standard. Dr. Khaled is also a worldrenowned expert in health information privacy and the head of the Electronic Health Information Laboratory, which conducts cutting-edge research in this area. Visit the booth for a demonstration of the tools.

## **Public Health Data Standards Consortium (PHDSC)**

Booth no. 07

PHDSC (the Consortium) is a national nonprofit, membership-based organization of federal, state, and local health agencies, professional associations, academia, public and private sector organizations, international members, and individuals. The Consortium is committed to bringing a common voice from the public health community to national efforts to standardize health information technology and population health data, to improve individual and community health. To fulfill its mission, the Consortium identifies priorities for new national standards for population health data; promotes integrating health-related information systems to meet the needs of public and private organizations, agencies and individuals; participates in national and international efforts to standardize health-related information; represents public health interests in standards development organizations, data content committees, and standards harmonization entities; and educates the public health community about health information technology standards, and the health information technology community about public health.

## **Social and Scientific Systems, Inc. (SSS)**

Booth no. 02

Social & Scientific Systems, Inc., (SSS) offers expertise in research design, survey data collection, Web applications development, quantitative and qualitative methods, data management, data analysis, and the integration and visualization of large datasets, for clients focused on improving the nation's public health and health care delivery systems. Its mission is to improve public health worldwide by providing technical, research, and program management services, and to that end, has developed long-term relationships with many federal and state agencies, as well as private and nonprofit clients, including National Center for Health Statistics, the Agency for Healthcare Research and Quality, the Medicare Payment Advisory Commission, the National Institutes of Health, the Maryland Health Care Commission, the Robert Wood Johnson Foundation, the Health Resources and Services Administration, the Administration on Aging, and the Centers for Medicare & Medicaid Services. The SSS booth will feature demonstrations of company projects.

# POSTER SESSIONS

## Location and Hours

The Poster Sessions will be held in the Congressional Hall of the Renaissance Downtown Hotel. The poster display hours are:

Session I: Tuesday, August 7 ..... 8:00 a.m.–12:30 p.m.  
 Session II: Tuesday, August 7 ..... 1:00 p.m.–5:30 p.m.  
 Session III: Wednesday, August 8 ..... 8:00 a.m.–1:00 p.m.

## Student poster author discussion and judging:

Session I: Tuesday, August 7 ..... 10:00 a.m.–10:30 a.m.  
 Session II: Tuesday, August 7 ..... 3:00 p.m.–3:30 p.m.  
 Student showcase: Wednesday, August 8..... 10:30 p.m.–12:00 p.m.

For detailed abstracts, visit the “Posters–Detailed Abstracts” section of the Conference website.

## Poster Session I

	<b>Title</b>	<b>Lead Author</b>	<b>Topic</b>	<b>*</b>
1.	Findings from the 2010 National Survey of Residential Care Facilities	Christine Caffrey	Aging	
2.	Determinants of Emergency Room Visits in Seniors: Population-based Analysis	Joseph Finkelstein	Aging	
3.	Trends in Hospitalization Associated with Atrial Fibrillation among the Elderly in the United States	Adebayo Arowolaju II	Aging	S
4.	Older Adult Access to Vision Rehabilitation Care in the United States	Lori Grover	Aging	S
5.	Socioeconomic predictors of mortality risk for adults with intellectual disability	Scott Landes	Aging	S
6.	Vitamin Status Profile and Cognitive Function in a National Sample of Older Americans	Abbas Naqvi	Aging	S
7.	Trends in Hospitalization Associated with Alzheimer’s Disease in the United States	Ashley Pinette	Aging	S
8.	Racial Variations in Office-based Medical Care for Mental Health	Grishma Patel	Mental health	S
9.	Neighborhood Disorder and Mental Health Among Baltimore City Residents	Hollisa Rosa	Mental health	S
10.	How Have Access and Cost Barriers to Mental Health Changed Over the Last Decade Among Insurance Groups? Findings From the Integrated Health Interview Series	Kathleen Rowan	Mental health	S

# POSTER SESSIONS CONTINUED

	<b>Title</b>	<b>Lead Author</b>	<b>Topic</b>	<b>*</b>
11.	Correlates of Psychological Distress in U.S. Adults During 2009–2010	Cory Blackwell	Mental health	S
12.	The Importance of Financial Health in Predicting Mental and Physical Health Outcomes	Jessica Sloan	Mental health	S
13.	Predictors of Discharge Planning in Criminal Justice Settings: Implications for Reentry of Offenders With Co-occurring Substance Use and Mental Health Disorders	Hiroki Toi	Mental health	S
14.	Prevalence of Hazardous and Harmful Drinking Patterns Among Older U.S. Adults: Data From the 2005–2008 NHANES	Sandra Wilson	Behavioral research	
15.	The Association Between Receipt of an Antidepressant Prescription and Weight Status	Devin Sanders	Mental health	
16.	Did Changes in the U.S. Centers for Disease Control’s Recommendations for HIV Testing Change the Characteristics of Adults Tested for HIV?: A Quantitative Analysis of Persons Tested Under Three Policy Regimes, Based on Data From the U.S. National Health Interview Survey, 1988–2010	Ryan Moltz	Health insurance/ health policy	S
17.	Community Health Center Effects on County Level Mortality Rates in U.S. Medically Underserved Areas, 2000–2008	Joseph Benitez	Health services	S
18.	Secondhand Smoke on the Johns Hopkins University Homewood Campus	Jackie Ferguson	Environmental health	S
19.	Multiple Environmental Chemical Exposures to Lead, Methylmercury and Polychlorinated Biphenyls Among Childbearing-aged Women (NHANES 1999–2004)	Marcella Thompson	Maternal and child health	
20.	The 2010 Occupational Health Supplement to the National Health Interview Survey	Sara Luckhaupt	Occupational health	
21.	Patterns of Mortality in New Hampshire, by Industry and Occupation	Mary Butow	Occupational health	S
22.	Paid Sick Leave and Nonfatal Occupational Injury	Abay Asfaw	Injury, violence, and safety	
23.	Characteristics of Vulnerable Users’ Deaths in Brazilian Road Safety 10 Cities	Veralice Gonçalves	Injury, violence, and safety	S
24.	Chronic Obstructive Pulmonary Disease, Hospital Visits, and Comorbidities—National Survey of Residential Care Facilities, 2010	Anne Wheaton	Respiratory health	
25.	Chronic Obstructive Pulmonary Disease and Movement Limitations in Adults—National Health Interview Survey, 2008–2010	Nicole Kosacz	Respiratory health	

# POSTER SESSIONS CONTINUED

	<b>Title</b>	<b>Lead Author</b>	<b>Topic</b>	<b>*</b>
26.	Clustering and Determinants of COPD in Central Appalachia	Nicole Johnson	Respiratory health	
27.	Trends in Hospitalization with Pulmonary Hypertension	Orlando Valle	Respiratory health	S
28.	Analysis of NAMCS and NHAMCS Data for Chronic Gaitigue Syndrome, 2000–2009	Jaeyong Bae	Health services	S
29.	Rising Incidence and Rates of Opioid Medication Prescription for Regional Body Pain in the Emergency Department	Ming-Chih Kao	Other	S
30.	Labor Force Status Among U.S. Adults 45–64 Years With and Without Arthritis, 2002–2010	Kristina Theis	Chronic disease	S
31.	Prevalence of Multiple Chronic Conditions Among U.S. Adults: Data From the National Health Interview Survey, 2010	Jeannine Schiller	Chronic disease	
32.	Increasing Congestive Heart Failure Hospitalization From 2000 to 2010 for those under 65: A Cause for Concern?	Shaleah Levant	Chronic disease	S

*\*S indicates a student submission.*

## Poster Session II

	<b>Title</b>	<b>Lead Author</b>	<b>Topic</b>	<b>*</b>
33.	Evaluating the Feasibility of Using Four-digit Social Security Numbers as National Death Index Search Criteria	Jesse Bassich	Methodologic research/ statistical methods	S
34.	A Statistical Method to Improve Truthful Responses to Surveys of Sensitive Information: A Quantitative Optional Unrelated-question Randomized Response Model	Anna Tuck	Methodologic research/ statistical methods	S
35.	A Comparison of Hispanic Population From the National Health Interview Survey and the Behavioral Risk Factor Surveillance System	Julia Lee	Health insurance/ health policy	S
36.	Access to Health Care Among Hispanic Subgroups	Gulnur Freeman	Health disparities	
37.	Racial Disparities in Outcomes of Lumbar Stenosis Surgery	Jacob Bagley	Health disparities	S
38.	Gender and Racial Disparities in Opioid Medication Prescription for Regional Body Pain in the Emergency Department	Ming-Chih Kao	Health disparities	S

# POSTER SESSIONS CONTINUED

	<b>Title</b>	<b>Lead Author</b>	<b>Topic</b>	<b>*</b>
39.	Quantitative Analyses on Health Leaders' Perceptions Towards Health Promotion in a Visible Minority Populations	Amy Ng	Health disparities	S
40.	Parental Investment, Child Health Formation and Racial Differences	'Muriel' Zheng Fang	Health disparities	S
41.	Beyond Battering: Association Between Intimate Partner Violence and Preventive Screening Behaviors Among Women	Monique Brown	Maternal and child health	S
42.	Child Bullies: Characteristics of Young School-aged Children Who Bully	LaJeana Howie	Maternal and child health	
43.	Teen Pregnancy in the United States is Higher When the Nativity of the Mother is Inside the United States	Jagit Teji	Maternal and child health	
44.	Pre-pregnancy Body Mass Index and Intra-abdominal Visceral Fat Accumulation in the First Trimester	Anjel Vahratian	Maternal and child health	
45.	Gestational Weight Gain in Underweight Women and Associations With Infant Death	Regina Davis	Maternal and child health	S
46.	Identifying Factors Related to the Implausible Gestational Ages Using Mixture Models	Alena Maze	Maternal and child health	S
47.	The Association Between the Medical Home and Receipt of Standardized Developmental Screening among U.S. Children 5 Years and Younger	Nicole Richmond	Maternal and child health	S
48.	Does Home Visiting Improve Birth Outcomes? Findings From the 2007–2008 Virginia PRAMS	Monisha Shah	Maternal and child health	S
49.	Utilization of Well Child Care and Effective Care Coordination: An analysis of 2007 National Survey of Children's Health data	Adejoke Ogunrinde	Maternal and child health	S
50.	Ease of Use of Community-based Services Among Children With Special Health Care Needs	Ngai Kwan	Maternal and child health	
51.	Congenital Anomalies and Childhood Cancer in Oklahoma	Amanda Janitz	Maternal and child health	
52.	Understanding Food Deserts: A Comparison of Food Insecure Neighborhoods in the Southeastern United States	Christopher Langelier	Nutrition/ physical activity/obesity	S
53.	The Impact of Pizza on the American Diet	Donna Rhodes	Nutrition/ physical activity/obesity	

# POSTER SESSIONS CONTINUED

	<b>Title</b>	<b>Lead Author</b>	<b>Topic</b>	<b>*</b>
54.	Food Intakes Converted to Retail Commodities Database: A Novel Approach to Convert Foods Consumed by Americans Back to Retail Commodities	Shanthy Bowman	Nutrition/ physical activity/obesity	
55.	Retooling of the USDA Food Patterns Equivalents Database: Methodology	Shanthy Bowman	Nutrition/ physical activity/obesity	
56.	Importance of Ethnic Foods in What We Eat in America (WWEIA), NHANES	Deirdra Chester	Nutrition/ physical activity/obesity	
57.	A Comparison of Field Methods to Assess Body Fat of Minority Elementary School Children	Teresa Johnson	Nutrition/ physical activity/obesity	
58.	Factors Associated With Physical Activity Participation Among Children	Ngai Kwan	Nutrition/ physical activity/obesity	
59.	Calcium, Potassium and Fiber Intake in Yogurt Consumers	Samara Nielsen	Nutrition/ physical activity/obesity	
60.	Total Vitamin and Mineral Intakes of the U.S. Population	Donna Rhodes	Nutrition/ physical activity/obesity	
61.	When America Eats	Lois Steinfeldt	Nutrition/ physical activity/obesity	
62.	Barriers to Healthy Eating: A Focus Group Study among Women at a Transitional Housing Facility	Heather Brotsos	Nutrition/ physical activity/obesity	S
63.	Obesity and Mortality: Are the Risks Declining? Evidence From a Meta-analysis of Eighteen Prospective Studies in United States	Tapan Mehta	Nutrition/ physical activity/obesity	S
64.	The Impact of Physical Activity and a Healthy Eating Diet on Post-heart Attack Mortality: Analysis From the Third National Health and Nutrition Examination Survey and Linked Mortality Files	Steven Lee	Nutrition/ physical activity/obesity	S

*\*S indicates a student submission.*

# POSTER SESSIONS CONTINUED

## Poster Session III

	<b>Title</b>	<b>Lead Author</b>	<b>Topic</b>	<b>*</b>
65.	Diabetes on Navajoland: Meat, Marvels, and Mysteries	Kelly Gneiting	Diabetes	
66.	Declining Rates of Hospitalization for Lower Extremity Conditions Among Adults Aged 20 Years or Older with Diabetes, United States, 1988–2009	Yanfeng Li	Diabetes	
67.	Cardiovascular Risk Factor (CVD-RF) Management in Diabetics in the United States Still an Elusive Target?	Siva Talluri	Diabetes	
68.	Profile on Emergency Department Visits among Adults with Diabetes, U.S. 2009	Jing Wang	Diabetes	
69.	Variants in or Near PNPLA3, GCKR and PPP1R3B associated with Ultrasound-defined Hepatic Steatosis (fatty liver) in NHANES III	Ruben Hernaez	Genetics	
70.	Visualizing the Data: Using Visual Analytics Software to Paint A Picture of a Community Need	Catherine Rains	Geocoding	
71.	Racial Differences in Refusal of Surgery for Colorectal Cancer in the United States	Siva Talluri	Cancer	
72.	Racial/Ethnic Disparities in Healthcare Receipt Among Male Cancer Survivors: Findings From the National Health Interview Survey, 2006–2010	Nynikka Palmer	Cancer	
73.	Using Achievable Benchmarks and Time to Benchmark to Highlight Disparities in Healthcare Services: Cancer Case Study	William Freeman	Cancer	
74.	A Population-based Survey of Celiac Disease in the United States	Siva Talluri	Other diseases	
75.	Women's Access to and Use of Hormonal Contraceptives, 1995–2006–2010	Jo Jones	Other diseases	
76.	The Weakening Link: The Sequencing of First Sex, First Marriage, and First Births Among Women in the United States: National Survey of Family Growth, 1988–2010	Gladys Martinez	Other diseases	
77.	Ambulatory Health Care Visit by Patients With Parkinson Disease in the United States 2005–2008	Wenyu Sun	Other diseases	
78.	Prevalence of Helminth Parasites From Vertebrates at Maharashtra Region, India	Hemlata Wankhede	Other diseases	
79.	Increase in Mortality Rates From Clostridium Difficile Infection: United States, 1999–2009	Jinquan Xu	Infectious diseases	
80.	Joint Modeling of Multivariate Longitudinal Measurements and Competing Risks Survival Data: Application to the Study on Older Mexican Americans	Ping Yao	Other diseases	



# POSTER SESSIONS CONTINUED

	<b>Title</b>	<b>Lead Author</b>	<b>Topic</b>	<b>*</b>
81.	Analyzing the Determinants of Health Care Provider Choice During Recessionary Periods	Kelly Cullen	Health insurance/ health	
82.	Comparison of Selected Health Care Utilization Measures for Young Adults Aged 19–25 Before and After Implementation of the Affordable Care Act	Whitney Kirzinger	Health insurance/ health	
83.	Living Longer? Living Healthier? Estimates of Healthy Life Expectancy in Colorado	Kirk Bol	Vital statistics	
84.	Developing Vital Records Standards for Electronic Health Record Systems	Donna Hoyert	Vital statistics	
85.	Which is the Fragile Sex? Understanding Sex Differences in Mortality Rates With a Life History Framework	Daniel Kruger	Vital statistics	
86.	A Picture of LGBT Health: Using Nationally Representative Data to Develop Objectives for Healthy People 2020	J. Michael Ryan	Other	
87.	Changes in Age-specific Death Rates From Six Leading causes of Death in Fifty U.S. States and the District of Columbia, 1970–2008	Rong Wei	Vital statistics	
88.	Implications of the ICD 10 Transition for Public Health Surveillance: Challenges, Opportunities and Lessons Learned	Donna Pickett	Other	
89.	Has Text Messaging Increased Participant Compliance on NHANES?	Tatiana Nwankwo	Behavioral research	
90	Premigration Harm and Depression: Findings from the New Immigrant Survey, 2003	Michelle Montgomery		S

*\*S indicates a student submission.*

# SPEAKER INDEX

A			
Akhter, Mohammad, M.D., M.P.H.	Plenary II	Dodd, Allison Hedley, Ph.D.	SS-28
Akinbami, Lara, M.D.	C5	Dorsey , Rashida	SS-31
Albright, Victoria, M.A.	SS-31	E	
Anderson, Robert, Ph.D.	C4, SS-36	Edwards, Brenda, Ph.D.	SS-20
Arias, Elizabeth, Ph.D.	SS-20	F	
Au, Lauren, M.S., R.D.	SS-33	Francis, Leslie, J.D., Ph.D.	SS-01
Avila, Rosa, M.S.P.H.	SS-10	Furukawa, Michael F., Ph.D.	SS-03
B		G	
Baker, Kellan	SS-37	Garten, Tori	SS-29
Bhuiya, Farida, M.P.H.	SS-07	Gindi, Renee M., Ph.D. M.P.H.	SS-35
Blum, Amy, M.H.S.A., R.H.I.A., C.T.R.	SS-21	Gingold, Janet, M.D.	SS-33
Blumberg, Stephen, Ph.D.	C2, D6, SS-10, SS-22	Golden, Cordell	A4
Brett, Kate, Ph.D.	B5	Goldman, Joseph, M.D.	D3
Broitman , Lisa, M.P.H.	SS-14	Gugerty, Brian, D.N.S., M.S., R.N.	SS-08
Brown, Clarice D., M.S.	SS-17	H	
C		Hamilton, Brady, Ph.D.	SS-20
Caffrey, Christine, Ph.D.	B2	Harris-Kojetin, Lauren, Ph.D.	SS-06
Cai, Rong, M.A.	SS-31	Hedegaard, Holly, M.D., M.S.P.H.	SS-32
Carr, Justine, M.D.	SS-01	Heron, Melonie, Ph.D.	SS-14
Chandra, Anjani, Ph.D.	B4	Hill, Steven, Ph.D.	SS-35
Chang, Man-Huei, M.P.H.	SS-24	Hirsch, Rosemarie, M.D.	B1
Claassen, Cynthia, Ph.D.	SS-32	Horon, Isabelle, Dr.PH.	SS-19
Cherry, Don, M.S.	C1	Hoyert, Donna, Ph.D.	SS-34
Cohen, Robin, Ph.D.	D6, SS-35	Hsaio, Chun-Ju, Ph.D., M.H.S.	SS-03
Colpe, Lisa, Ph.D., M.P.H.	SS-10	Hu, Tianyan	SS-04
Copen, Casey, Ph.D.	B4	Huang, David, Ph.D., M.P.H., C.P.H.	SS-25
Crosby, Alex, M.D.	SS-32	Hyde, Pamela S., J.D.	Plenary II
D		J	
Daniels, Kimberly, Ph.D.	B4	Jamoom, Eric, Ph.D., M.P.H., M.S.	SS-03
Day, Charles	SS-31	Jonas, Bruce, Ph.D.	SS-22
Day, Hannah, Ph.D.	SS-28	Jones-Putoff , Alexa K.	SS-20
Decker, Sandra, Ph.D.	SS-04	Judson, Dean, Ph.D.	SS-28
Dietz, Patricia, Dr.PH., M.P.H.	SS-19		

# SPEAKER INDEX CONTINUED

<b>K</b>		Moshfegh, Alanna, M.S., R.D.	D3
Kenney, Genevieve, Ph.D.	SS-04	<b>N</b>	
Khan, Hetty, M.S., B.S.N., R.N.	SS-34	Nichols, Erin	SS-36
King, Brian, Ph.D., M.P.H.	SS-15	<b>O</b>	
Kirby, James, Ph.D., M.A.	SS-24	Ogden, Cynthia L., Ph.D., M.R.P.	SS-17
Kowaleski, Julia L.	Plenary I	Osterman, Michelle, M.P.H.	SS-19
Krebs-Smith, Susan, Ph.D.	SS-15	<b>P</b>	
Kruger, Daniel J., Ph.D.	SS-23	Park, Melissa, M.P.H.	A1
Kyllo, Dave	SS-06	Parker, Jennifer, Ph.D.	SS-23
<b>L</b>		Park-Lee, Eunice, Ph.D.	B2
Lacomb, Randy, M.S.	D3	Patel, Vaishali, Ph.D., M.P.H.	SS-03
Lancet, Elizabeth, M.P.H.	SS-33	Peterson, Chris, M.P.P.	SS-04
Larson, Sharon, Ph.D.	SS-22	Pfeiffer, Christine M., Ph.D.	SS-16
Levant, Shaleah, M.P.H.	D2	Pickett, Donnataria, M.P.H., R.H.I.A.	D1
Lim Ko, Kathy, M.S.	SS-14	Pratt, Charlotte A., Ph.D., R.D.	SS-15
Liu, Anne, M.S.P.H.	SS-36	Pringle, Beverly, Ph.D.	SS-10
Livingston, Gretchen, Ph.D.	SS-20	<b>Q</b>	
Luft, Harold, Ph.D.	Plenary I, SS-08	Queen, Susan, Ph.D.	SS-34
Lucas, Jacqueline Wilson, M.P.H.	B3, SS-14	Quintana, Anthony	A5
Luke, Julian	C2	<b>R</b>	
<b>M</b>		Rice, Catherine, Ph.D.	SS-10
Ma, Jun, M.D., Ph.D.	SS-07	Robinson, Whitney, Ph.D.	SS-23
Madans, Jennifer, Ph.D.	SS-24	Rosenoff, Emily, M.P.H.	SS-06
Maitland, Aaron, M.A.	SS-12	Roush, Sandy, M.T., M.P.H.	SS-21
Marshall, Robert, M.D.	SS-17	<b>S</b>	
Martinez, Gladys, Ph.D.	B4	Scout	SS-37
Mathews, TJ, M.S.	D5	Schappert, Susan, M.A.	D4
Mattson, Margaret, Ph.D.	SS-31	Schiller, Jeannine, M.P.H.	D6
Merikangas, Kathleen, Ph.D.	SS-22	Schleicher, Rosemary, Ph.D.	SS-16
Miller, Eric	A4	Schuler, Megan, M.P.H.	SS-33
Miller, Erin	SS-24	Selck, Frederic, M.P.H.	SS-04
Miller, Kristen Ph.D.	SS-37	Setel, Phillip, M.A., Ph.D.	SS-36
Miniño, Arialdi, M.P.H.	A3, C4	Shaw, Lauren	SS-29
Mirel, Lisa, M.S.	A4		
Molla, Michael T., Ph.D.	SS-24		
Mosher, Bill, Ph.D.	SS-12		

# SPEAKER INDEX CONTINUED

---

---

Shea, Madeleine A., Ph.D.	SS-25
Simon, Alan, M.D.	SS-28
Simpson, Lisa A., M.B., B.Ch., M.P.H., F.A.A.P.	Plenary II
Sirkis, Robyn	SS-12
Sommers, Benjamin, M.D., Ph.D.	SS-35
Sondik, Edward, Ph.D.	Plenary I, II
Stephens, Deanna, M.P.H.	SS-29
Stewart-Prather, Tammy, M.A.	SS-29
Strully, Kate, Ph.D.	SS-23
Suarez, Walter, M.D., M.P.H.	SS-01
Sutton, Paul, Ph.D.	SS-21
Sutton, Shae R., Ph.D.	SS-19
<b>T</b>	
Talwalker, Anjali, M.D.	SS-07
Taylor, Shelby, M.P.H.	SS-07
Troiano, Richard P., Ph.D.	SS-15
<b>V</b>	
Vesper, Hubert, Ph.D.	SS-16
<b>W</b>	
Wall, Hillary K., M.P.H.	SS-17
Wallman, Katherine K.	Plenary I
Ward, Brian W., Ph.D.	A2, C3
Warner, Margaret, Ph.D.	A3, 21
West, Brady T., Ph.D.	12
Wiener, Joshua, Ph.D.	06
Williamson, Michelle, R.N., M.S.	08
Wilson, Elizabeth, M.P.H.	D5
Woodward, Albert, M.B.A., Ph.D.	SS-31
Woodwell, David, M.P.H.	07
Wright, Don, M.D., M.P.H.	25
<b>Z</b>	
Zeller, Eileen, M.P.H.	SS-32
Zipf, George, M.S.	SS-12

# SURVEYS AND OFFICES INDEX

---

---

## Surveys

### National Health Care Surveys

National Ambulatory Medical Care Survey (NAMCS).....	A1, C1, D4, SS-04, SS-07
National Hospital Ambulatory Medical Care Survey (NHAMCS).....	A1, C1, D4, SS-04, SS-07, SS-31, SS-32
National Hospital Discharge Survey (NHDS).....	D2, SS-31
National Survey of Residential Care Facilities (NSRCF).....	B4, SS-06
National Hospital Care Survey (NHCS).....	SS-31

### National Health and Nutrition

Examination Surveys (NHANES).....	A4, B1, D3, SS-04, SS-12, SS-14, SS-16
-----------------------------------	--

National Health Interview Survey (NHIS),.....	B3, C3, D6, SS-12
---	-------------------

State and Local Area Integrated Telephone Survey (SLAITS).....	C2
--	----

National Survey of Children with Special Health Care Needs (NS-CSHCN).....	C2, SS-10
Survey of Pathways to Diagnosis and Services (SPDS).....	C2, SS-10

National Survey of Family Growth (NSFG).....	B4, SS-12
--	-----------

National Vital Statistics System (NVSS).....	SS-21
--	-------

## Offices

Classifications and Public Health Data Standards.....	D1, SS-01
Office of Analysis and Epidemiology.....	B5, C5, SS-22, SS-23, SS-24, SS-25, SS-28
Office of Information Services.....	A5, SS-29
Office of the Director.....	SS-31, SS-32, SS-34, SS-35, SS-36

# TOPIC INDEX

---

---

## Topics

Autism spectrum disorder .....	SS-10
Children's health .....	SS-15
Communities .....	SS-01
Data access .....	SS-01
Data linkage.....	SS-28
Data standards.....	SS-34
Dietary .....	SS-16
Disability .....	SS-02
Drug abuse .....	SS-31
Electronic health records .....	SS-08, SS-03
Health care reform.....	SS-07
Health disparities .....	SS-23
Healthy People 2020.....	SS-23, SS-25
ICD and IDF classification and coding.....	SS-34
Lesbian, gay, bisexual and transgender health.....	SS-37
Mental health .....	SS-22
Million Hearts .....	SS-17
Mortality.....	SS-21
Paradata .....	SS-12
Policy .....	SS-04
Population .....	SS-20, SS-14
Race and ethnicity.....	SS-14
Social media .....	SS-29
Suicide .....	SS-32
Survey research and methodology .....	SS-06
Vital statistics .....	SS-19, SS-21, SS-36

# THANK YOU

---

---

## **NCHS Family,**

The 2012 planning committee has worked hard over the past year to put together the National Conference for Health Statistics. This year's conference has sought to build on the success of previous conferences. The National Center for Health Statistics (NCHS) continues the tradition of developing a high-quality program with expert speakers from across the public health and health statistics community, an expanded selection of government and nongovernment exhibitors, and of course, the opportunity meet and converse with NCHS leadership. For the first time we are offering continuing education credits for Learning Institute participants. The poster session is significantly expanded and includes a special focus on student research. None of this could have been done without the help and dedication of a large number of staff from across NCHS, too many to be listed individually.

This includes the poster session workgroup, including those who reviewed the poster abstracts and served as judges. The exhibit workgroup assembled an excellent mix of exhibitors, and we acknowledge the individuals that managed and staffed the booths. Employees in the Office of Management provided expertise in the area of speaker training and continuing education credits. Individuals from across NCHS provided administrative support including travel, labor, and shipping of materials. Staff from the Office of Information Services have worked tirelessly over the months leading up to the conference producing all manner of high-quality conference materials both print and electronic, and let us not forget to mention those that volunteered as conference monitors and all those who have supported the conference in a thousand other ways. To everyone that contributed to making this a great conference, we offer our most sincere thanks.

Tammy Stewart-Prather, M.A. Co-chair  
Paul Sutton, Ph.D. Co-chair  
Virginia Cain, Ph.D. Senior Staff Advisor

# NOTES

---

---



# NOTES

---

---



# SPECIAL MEMORIAL

---

---



∞ *Dr. Randy Curtin* ∞

---

*Thank you*

NCHS dedicates this year's conference to our dear friend and colleague, Dr. Randy Curtin, in grateful appreciation for his contributions to our Center and to the statistical community. Randy worked at NCHS for his entire career, from September 1978 until his death in June 2012. He had a strong dedication to his workplace and to his colleagues that was rare and special. He strongly believed in the mission of NCHS and used his statistical gifts to further that mission. His impact as a statistician and a manager was wide and vast, touching nearly every data system at NCHS. His greatest contribution, however, was that he gave of his time and abilities to help and mentor his colleagues.

## **CONFERENCE INFORMATION**

THIS PROGRAM IS ALSO AVAILABLE ON THE NCHS HOME PAGE AT:  
[HTTP://WWW.CDC.GOV/NCHS/EVENTS/2012NCHS/INDEX.HTM](http://www.cdc.gov/nchs/events/2012nchs/index.htm)