

Clinical and Laboratory Standards Institutes guidelines include standardized *I. limosus* antimicrobial susceptibility testing. However, matrix-assisted laser desorption/ionization time-of-flight mass spectrometry accurately identifies *I. limosus*. *I. limosus* displays high MICs for colistin and almost all  $\beta$ -lactams, except imipenem and meropenem (9). It has been suggested that the multidrug resistance of *I. limosus* enhances its selection in CF patients (2). In our case, successive treatment with drugs that were ineffective against *I. limosus* could have enabled its selection.

In conclusion, we emphasize a pathogenic role of *I. limosus* in lung transplant recipients several years after respiratory clearance of the bacteria. Chronic graft dysfunction, intensifying immunosuppression, and SARS-CoV-2 infection in this patient could have favored colonization with *I. limosus*. Characteristics of the bacterium such as colony morphotypes and multidrug resistance could delay effective therapy.

### About the Author

Dr. Farfour is a medical microbiologist at Foch Hospital clinical laboratory, Suresnes, France. His primary research interests are emerging pathogens and antimicrobial drug resistance.

### References

1. Peeters C, Depoorter E, Praet J, Vandamme P. Extensive cultivation of soil and water samples yields various pathogens in patients with cystic fibrosis but not *Burkholderia multivorans*. *J Cyst Fibros*. 2016;15:769–75 <https://doi.org/10.1016/j.jcf.2016.02.014>
2. Bittar F, Leydier A, Bosdure E, Toro A, Reynaud-Gaubert M, Boniface S, et al. *Inquilinus limosus* and cystic fibrosis. *Emerg Infect Dis*. 2008;14:993–5. <https://doi.org/10.3201/eid1406.071355>
3. Garnett JP, Kalsi KK, Sobotta M, Bearham J, Carr G, Powell J, et al. Hyperglycaemia and *Pseudomonas aeruginosa* acidify cystic fibrosis airway surface liquid by elevating epithelial monocarboxylate transporter 2 dependent lactate-H<sup>+</sup> secretion. *Sci Rep*. 2016;6:37955. <https://doi.org/10.1038/srep37955>
4. Pitulle C, Citron DM, Bochner B, Barbers R, Appleman MD. Novel bacterium isolated from a lung transplant patient with cystic fibrosis. *J Clin Microbiol*. 1999;37:3851.
5. Goeman E, Shivam A, Downton TD, Glanville AR. Bacteremic *Inquilinus limosus* empyema in an Australian lung transplant patient with cystic fibrosis. *J Heart Lung Transplant*. 2015;34:1220–3. <https://doi.org/10.1016/j.healun.2015.06.013>
6. McGinniss JE, Whiteside SA, Simon-Soro A, Diamond JM, Christie JD, Bushman FD, et al. The lung microbiome in lung transplantation. *J Heart Lung Transplant*. 2021;40:733–44. <https://doi.org/10.1016/j.healun.2021.04.014>
7. Konishi Y, Miyoshi K, Kurosaki T, Otani S, Sugimoto S, Yamane M, et al. Airway bacteria of the recipient but not the

donor are relevant to post-lung transplant pneumonia. *Gen Thorac Cardiovasc Surg*. 2020;68:833–40. <https://doi.org/10.1007/s11748-019-01273-6>

8. Schmoldt S, Latzin P, Heesemann J, Griese M, Imhof A, Hogardt M. Clonal analysis of *Inquilinus limosus* isolates from six cystic fibrosis patients and specific serum antibody response. *J Med Microbiol*. 2006;55:1425–33. <https://doi.org/10.1099/jmm.0.46466-0>
9. Kiratisin P, Koomanachai P, Kowwigkai P, Pattanachaiwit S, Aswapokee N, Leelaporn A. Early-onset prosthetic valve endocarditis caused by *Inquilinus* sp. *Diagn Microbiol Infect Dis*. 2006;56:317–20. <https://doi.org/10.1016/j.diagmicrobio.2006.05.005>
10. Hogardt M, Ulrich J, Riehn-Kopp H, Tümmler B. EuroCareCF quality assessment of diagnostic microbiology of cystic fibrosis isolates. *J Clin Microbiol*. 2009;47:3435–8. <https://doi.org/10.1128/JCM.01182-09>

Address for correspondence: Eric Farfour, Service de biologie Clinique, Hôpital Foch, 40 rue Worth, 92150 Suresnes, France; email: e.farfour@hopital-foch.com, ericf6598@yahoo.fr

## Genomic Analysis of Early Monkeypox Virus Outbreak Strains, Washington, USA

Pavitra Roychoudhury,<sup>1</sup> Jaydee Sereewit,<sup>1</sup> Hong Xie, Ethan Nunley, Shah M. Bakhash, Nicole A.P. Lieberman, Alexander L. Greninger

Author affiliations: University of Washington, Seattle, Washington, USA (P. Roychoudhury, J. Sereewit, H. Xie, E. Nunley, S.M. Bakhash, N.A.P. Lieberman, A.L. Greninger); Fred Hutchinson Cancer Research Center, Seattle (P. Roychoudhury, A.L. Greninger)

DOI: <https://doi.org/10.3201/eid2903.221446>

We conducted a genomic analysis of monkeypox virus sequences collected early in the 2022 outbreak, during July–August, in Washington, USA. Using 109 viral genomes, we found low overall genetic diversity, multiple introductions into the state, ongoing community transmission, and potential for co-infections by multiple strains.

<sup>1</sup>These first authors contributed equally to this article.

The World Health Organization declared the 2022 mpox (formerly monkeypox) outbreak a public health emergency of international concern on July 23, 2022, after cases were identified in nearly 80 countries (1). By August 26, 2022, a total of 411 mpox cases had been confirmed in Washington, USA (2), and 17,432 cases had been confirmed in the United States (<https://www.cdc.gov/poxvirus/monkeypox/response/2022/us-map.html>).

Viral whole-genome sequencing (WGS) can augment contact tracing efforts and identify emerging variants, which potentially could affect infectivity, virulence, vaccine escape, and treatment resistance. By late August 2022, Washington had deposited more monkeypox virus (MPXV) sequences into public databases than any other state in the country. Here, we describe the Washington outbreak by using 109 MPXV genomes collected in the state.

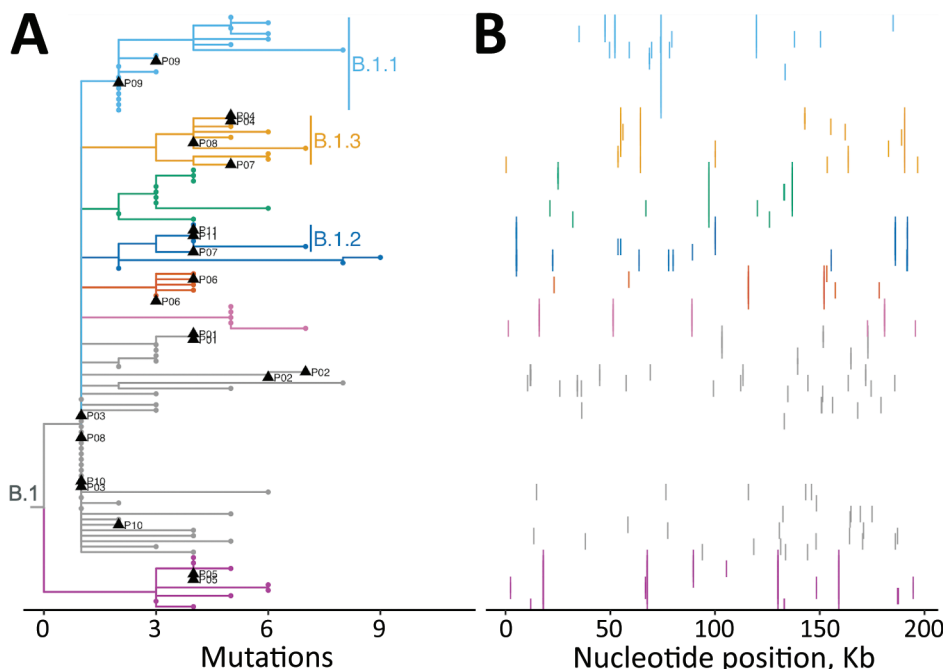
We attempted WGS on 140 residual clinical specimens, primarily lesion swabs, that were PCR-positive for MPXV and had a cycle threshold (Ct) value <31 (range 15.9–30.4). We performed sequencing by using a hybridization probe-capture-based approach, as previously described (3), and probes designed by using the MPXV 2022/MA001 strain (Genbank accession no. ON563414) (Appendix, <https://wwwnc.cdc.gov/EID/article/29/3/22-1446-App1.pdf>). We generated consensus genomes by using Revica (<https://github.com/greninger-lab/revica>), a custom pipeline that performs trimming, filtering, and iterative re-

mapping (Appendix). Sequences with <1% ambiguous bases (Ns) were deposited to GenBank under BioProject accession no. PRJNA862948 (Appendix Table). We used Augur, Auspice, and Nextclade to perform phylogenetic analysis (4,5), and we used UShER (6) to perform phylogenetic placement on a global tree (Appendix). This study was approved by the University of Washington Institutional Review Board STUDY00000408.

The analysis comprised a total of 109 sequences from 98 persons whose specimens were collected during July 6–August 19, 2022, primarily from King and Pierce Counties. Of the 98 patients, 90 (91.84%) were male and 1 (1.02%) female; 7 (7.14%) had unknown or undeclared sex. Median age at specimen collection was 36.0 (range 19–57) years.

We identified multiple identical genomes from different persons, suggesting ongoing community transmission (Figure, panel A). All 109 genomes fell within the predominant 2022 outbreak lineage B.1 (7), and sublineages included B.1.1 (n = 18), B.1.2 (n = 6), B.1.3 (n = 10), B.1.4 (n = 2), and B.1.8 (n = 2), suggesting separate MPXV introductions into the state. Among sublineages, we identified the nearest neighbor sequences from Germany (B.1.1); Connecticut, USA (B.1.2); Canada (B.1.4); Florida, USA (B.1.8); and multiple countries in Europe (B.1.3) (Appendix).

Overall, we observed low genetic diversity and a median of 1 aa (range 0–7 aa) mutation (substitutions or deletions) across the genome relative to the



**Figure.** Phylogenomic analysis of 109 early monkeypox virus outbreak strains, Washington, USA. A) Phylogenetic tree showing that all Washington sequences fall within the major outbreak lineage B.1. The many identical sequences suggest community transmission; distinct sublineages suggest multiple MPXV introductions into the state. Black triangles indicate sequences from multiple swabs from the same patient, which were available for 11 persons, patients P01–P11. Clades with  $\geq 5$  sequences were assigned a color for tips and branches, and have text labels for the major sublineages, B.1.1, B.1.2, and B.1.3. All other tips and smaller clades are indicated in gray. B) Single nucleotide polymorphisms from each sample in panel A arrayed across the MPXV genome. Colors correspond to lineage coloring in panel A. MPXV, monkeypox virus.

B.1 ancestor (genome MPXV\_USA\_2022\_MA001; Genbank accession no. ON563414). We identified 138 unique SNPs across the genome in the 109 sequences (Figure, panel B), producing 66 unique mutations (amino acid substitutions or deletions) in 51 genes. Of these, 5 unique aa substitutions (S553N, A1232V, D1546N, D1604N, and S1633L) occurred in surface glycoprotein OPG210, and 3 (E306K, D441Y, and E553K) in OPG189, which encodes one of several ankyrin-repeat proteins (Appendix Figure 1). We noted an abundance of G to A and C to T nucleotide substitutions (Appendix Figure 2), indicative of apolipoprotein B mRNA editing catalytic polypeptide-like3 activity consistent with other reports (8). We did not identify any substitutions or deletions in OPG057, a membrane glycoprotein homologous to F13L in vaccinia virus and the putative target of the therapeutic antiviral tecovirimat currently used to treat mpox (9).

Sequences from multiple swabs from the same person at the same time point had a median pairwise nucleotide difference of 1 (range 0–10 for 11 sample pairs) outside of labile tandem repeat regions (10). We observed even greater similarity in protein sequences with 0 (range 0–6) median pairwise aa differences. Among sample pairs from 3 patients, patient P06 (P06) had 1 aa difference, P07 had 6 aa differences, and P08 had 2 aa differences. Relative to the B.1 ancestral strain MA001, one of the P06 pair featured a V195I mutation in OPG079. One of the P08 pair had synonymous mutations in OPG073 and OPG083, and an OPG003:R84K substitution. Finally, differences in repeat samples from P07 suggest possible co-infection with strains from the B.1.2 and B.1.3 lineages, consistent with the patient's clinical history indicating multiple sexual partners. Relative to the MA001 B.1 reference strain, one of the P07 samples had synonymous mutations in OPG083 and OPG189, OPG180:D325N, and OPG016:R84K. The other of the P07 pair shared none of those SNPs, but had OPG015:V261A, OPG109:I66V, and the B.1.2-defining OPG210:D1604N. These mutations remained after re-extracting and re-sequencing the original specimens and, compared with interhost variation, suggest the possibility of co-infection with different MPXV strains (Appendix Table).

Overall, our data showed ongoing community MPXV transmission in Washington. The limited MPXV genetic diversity makes it challenging to use WGS data for contact tracing. However, continued genomic surveillance will be crucial for tracking viral evolution and identifying mutations associated with vaccine escape or antiviral treatment resistance.

This article was preprinted at <https://doi.org/10.1101/2022.09.19.22280115>.

## About the Author

Dr. Roychoudhury is an acting instructor and director of COVID-19 next-generation sequencing in the Department of Laboratory Medicine and Pathology at the University of Washington, Seattle, Washington, USA, and an associate in the Vaccine and Infectious Disease Division at the Fred Hutchinson Cancer Research Center, Seattle. Her primary research interests are pathogen genomics and mathematical modeling of viral evolution and host-pathogen interactions.

## References

1. Kozlov M. Monkeypox declared a global emergency: will it help contain the outbreak? *Nature*. 2022 Jul 25 [Epub ahead of print]. <https://doi.org/10.1038/d41586-022-02054-7>
2. Washington State Department of Health. Monkeypox (MPV) [cited 28 Aug 2022]. <https://doh.wa.gov/you-and-your-family/illness-and-disease-z/monkeypox>
3. Greninger AL, Roychoudhury P, Xie H, Casto A, Cent A, Pepper G, et al. Ultrasensitive capture of human herpes simplex virus genomes directly from clinical samples reveals extraordinarily limited evolution in cell culture. *MSphere*. 2018;3:e00283-18. <https://doi.org/10.1128/mSphereDirect.00283-18>
4. Aksamentov I, Roemer C, Hodcroft E, Neher R. Nextclade: clade assignment, mutation calling and quality control for viral genomes. *J Open Source Softw*. 2021;6:3773. <https://doi.org/10.21105/joss.03773>
5. Hadfield J, Megill C, Bell SM, Huddleston J, Potter B, Callender C, et al. Nextstrain: real-time tracking of pathogen evolution. *Bioinformatics*. 2018;34:4121–3. <https://doi.org/10.1093/bioinformatics/bty407>
6. Turakhia Y, Thornlow B, Hinrichs AS, De Maio N, Gozashti L, Lanfear R, et al. Ultrafast Sample placement on Existing tRees (USHER) enables real-time phylogenetics for the SARS-CoV-2 pandemic. *Nat Genet*. 2021;53:809–16. <https://doi.org/10.1038/s41588-021-00862-7>
7. Wang L, Shang J, Weng S, Aliyari SR, Ji C, Cheng G, et al. Genomic annotation and molecular evolution of monkeypox virus outbreak in 2022. *J Med Virol*. 2022.
8. Gigante CM, Korber B, Seabolt MH, Wilkins K, Davidson W, Rao AK, et al. Multiple lineages of monkeypox virus detected in the United States, 2021–2022. *Science*. 2022;378:560–5. <https://doi.org/10.1126/science.add4153>
9. Merchinsky M, Albright A, Olson V, Schiltz H, Merkeley T, Hughes C, et al. The development and approval of tecovirimat (TPOXX®), the first antiviral against smallpox. *Antiviral Res*. 2019;168:168–74. <https://doi.org/10.1016/j.antiviral.2019.06.005>
10. Hatcher EL, Wang C, Lefkowitz EJ. Genome variability and gene content in chordopoxviruses: dependence on microsatellites. *Viruses*. 2015;7:2126–46. <https://doi.org/10.3390/v7042126>

Address for correspondence: Pavitra Roychoudhury, Department of Laboratory Medicine and Pathology, University of Washington, 1100 Fairview Ave N, E5-110, Seattle, WA 98109-1024, USA; email: [proychou@uw.edu](mailto:proychou@uw.edu)

# Genomic Analysis of Early Monkeypox Virus Outbreak Strains, Washington, United States

## Appendix

### Additional Methods

#### Sequencing Approach

DNA was extracted by using the MagNA Pure 96 DNA and Viral NA Small Volume Kit (Roche, <https://www.roche.com>), and sequencing libraries were prepared by using the DNAPrep Kit (Illumina, <https://www.illumina.com>) and a custom xGEN NGS Hybridization Capture DNA panel (Integrated DNA Technologies, <https://www.idtdna.com>) based on MXPV 2022/MA001 strain sequence (GenBank accession no. ON563414.2). Libraries were sequenced on Nextseq 2000 or NovaSeq 6000 (Illumina) instruments by using  $2 \times 150$ -bp kits targeting  $\geq 1$  million reads per sample.

#### Bioinformatic Analysis

Paired-end raw reads were adaptor- and quality-trimmed with Trimmomatic version 0.39 ([www.usadellab.org/cms/?page=trimmomatic](http://www.usadellab.org/cms/?page=trimmomatic)). Unpaired reads and reads shorter than 120-bp were discarded. Trimmed reads were aligned to the West Africa MPXV reference strain (GenBank accession no. NC\_063383.1) by using bbmap version 38.96 (<https://github.com/BioInfoTools/BBMap>), and duplicate reads were discarded. Ambiguously mapped reads were randomly assigned to one of the top-scoring sites to give the inverted terminal repeats regions even coverage. The consensus genome was generated by 3 iterations of consensus calling using Samtools mpileup version 1.15 (<https://www.htslib.org/doc/samtools-mpileup.html>) and iVar consensus version 1.3.1 (<https://andersen-lab.github.io/ivar/html/manualpage.html>) with a minimum base quality of 15, a minimum frequency threshold of 0.6, and a minimum depth of 5, then remapped reads to the most recent

consensus. After each iteration, any leading or trailing ambiguous bases (Ns) were removed by using Revica (<https://github.com/greninger-lab/revica>).

### Phylogenetic Placement on Global MPXV Tree

We used the USHER tool ([https://github.com/bpt26/USHER\\_ANALYSES](https://github.com/bpt26/USHER_ANALYSES)) to place our sequences on a global tree of all available MPXV genomes at the time of writing via the web interface (<https://genome.ucsc.edu/cgi-bin/hgPhyloPlace>) with default settings. We visualized the resulting subtrees using Nextstrain/Auspice (Appendix Figure 3).

**Appendix Table.** Sequencing data obtained during genomic analysis of early monkeypox virus outbreak strains, Washington State, United States\*

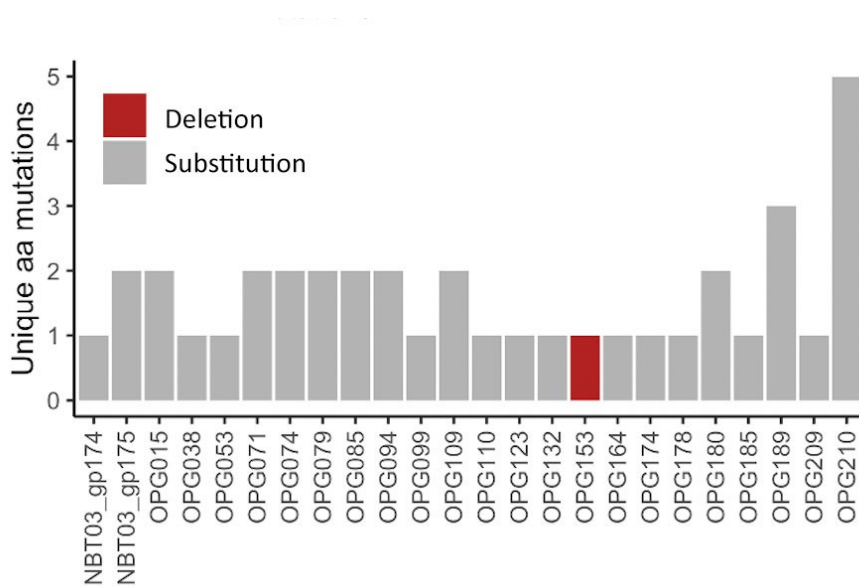
| Isolate Name                     | GenBank accession no. | SRA accession no.  | Patient no.† | Lineage |
|----------------------------------|-----------------------|--------------------|--------------|---------|
| MpxV/human/USA/WA-UW-083698/2022 | OP442945.1            | SRR21524973        | P01          | B.1     |
| MpxV/human/USA/WA-UW-088793/2022 | OP442947.1            | SRR21524979        | P01          | B.1     |
| MpxV/human/USA/WA-UW-083781/2022 | OP392544.1            | SRR21524974        | P02          | B.1     |
| MpxV/human/USA/WA-UW-085171/2022 | OP392546.1            | SRR21524961        | P02          | B.1     |
| MpxV/human/USA/WA-UW-087006/2022 | OP257260.1            | SRR21236084        | P03          | B.1     |
| MpxV/human/USA/WA-UW-088092/2022 | OP392551.1            | SRR21524968        | P03          | B.1     |
| MpxV/human/USA/WA-UW-086040/2022 | OP257258.1            | SRR21236086        | P04          | B.1.3   |
| MpxV/human/USA/WA-UW-082770/2022 | OP392540.1            | SRR21524969        | P04          | B.1.3   |
| MpxV/human/USA/WA-UW-083953/2022 | OP328307.1            | SRR21236131        | P05          | B.1     |
| MpxV/human/USA/WA-UW-087336/2022 | OP392550.1            | SRR21524987        | P05          | B.1     |
| MpxV/human/USA/WA-UW-087301/2022 | OP310047.1            | SRR21236139        | P06          | B.1     |
| MpxV/human/USA/WA-UW-084148/2022 | OP392545.1            | SRR21524986        | P06          | B.1     |
| MpxV/human/USA/WA-UW-074949/2022 | OP184762.1            | SRR20973038        | P07          | B.1.3   |
|                                  |                       | <b>SRR21616210</b> |              |         |
| MpxV/human/USA/WA-UW-074988/2022 | OP184765.1            | SRR20973035        | P07          | B.1.2   |
|                                  |                       | <b>SRR21616209</b> |              |         |
| MpxV/human/USA/WA-UW-073669/2022 | OP123049.1            | SRR20736989        | P08          | B.1.3   |
| MpxV/human/USA/WA-UW-076854/2022 | OP123050.1            | SRR20736988        | P08          | B.1     |
| MpxV/human/USA/WA-UW-076773/2022 | OP184763.1            | SRR20973037        | P09          | B.1.1   |
| MpxV/human/USA/WA-UW-074932/2022 | OP184764.1            | SRR20973036        | P09          | B.1.1   |
| MpxV/human/USA/WA-UW-071121/2022 | OP123047.1            | SRR20736991        | P10          | B.1     |
| MpxV/human/USA/WA-UW-076861/2022 | OP123048.1            | SRR20736990        | P10          | B.1     |
| MpxV/human/USA/WA-UW-087424/2022 | OP257248.1            | SRR21236101        | P11          | B.1.2   |
| MpxV/human/USA/WA-UW-085462/2022 | OP392547.1            | SRR21524972        | P11          | B.1.2   |
| MpxV/human/USA/WA-UW-073909/2022 | OP055800.1            | SRR20653196        | NA           | B.1.1   |
| MpxV/human/USA/WA-UW-076724/2022 | OP055804.1            | SRR20653192        | NA           | B.1     |
| MpxV/human/USA/WA-UW-079141/2022 | OP055806.1            | SRR20653190        | NA           | B.1     |
| MpxV/human/USA/WA-UW-074372/2022 | OP055807.1            | SRR20653189        | NA           | B.1     |
| MpxV/human/USA/WA-UW-075986/2022 | OP055808.1            | SRR20653188        | NA           | B.1     |
| MpxV/human/USA/WA-UW-076082/2022 | OP055809.1            | SRR20653187        | NA           | B.1     |
| MpxV/human/USA/WA-UW-073974/2022 | OP123040.1            | SRR20731575        | NA           | B.1     |
| MpxV/human/USA/WA-UW-070134/2022 | OP123041.1            | SRR20731574        | NA           | B.1.1   |
| MpxV/human/USA/WA-UW-077622/2022 | OP123042.1            | SRR20731573        | NA           | B.1     |
| MpxV/human/USA/WA-UW-077836/2022 | OP123043.1            | SRR20731572        | NA           | B.1     |
| MpxV/human/USA/WA-UW-071246/2022 | OP123044.1            | SRR20736996        | NA           | B.1     |
| MpxV/human/USA/WA-UW-076225/2022 | OP123045.1            | SRR20736995        | NA           | B.1.2   |
| MpxV/human/USA/WA-UW-078870/2022 | OP123046.1            | SRR20736992        | NA           | B.1.1   |
| MpxV/human/USA/WA-UW-070499/2022 | OP169336.1            | SRR20913445        | NA           | B.1     |
| MpxV/human/USA/WA-UW-074224/2022 | OP169340.1            | SRR20913438        | NA           | B.1     |
| MpxV/human/USA/WA-UW-074184/2022 | OP169341.1            | SRR20913437        | NA           | B.1.1   |
| MpxV/human/USA/WA-UW-071966/2022 | OP169344.1            | SRR20913433        | NA           | B.1.1   |
| MpxV/human/USA/WA-UW-075687/2022 | OP169345.1            | SRR20913443        | NA           | B.1.3   |
| MpxV/human/USA/WA-UW-072839/2022 | OP169346.1            | SRR20913442        | NA           | B.1.1   |
| MpxV/human/USA/WA-UW-079401/2022 | OP184760.1            | SRR20973040        | NA           | B.1     |
| MpxV/human/USA/WA-UW-078603/2022 | OP184761.1            | SRR20973039        | NA           | B.1     |
| MpxV/human/USA/WA-UW-089015/2022 | OP257243.1            | SRR21236108        | NA           | B.1.2   |
| MpxV/human/USA/WA-UW-080268/2022 | OP257244.1            | SRR21236106        | NA           | B.1     |
| MpxV/human/USA/WA-UW-084909/2022 | OP257245.1            | SRR21236104        | NA           | B.1     |
| MpxV/human/USA/WA-UW-083578/2022 | OP257246.1            | SRR21236103        | NA           | B.1     |
| MpxV/human/USA/WA-UW-088432/2022 | OP257247.1            | SRR21236102        | NA           | B.1     |



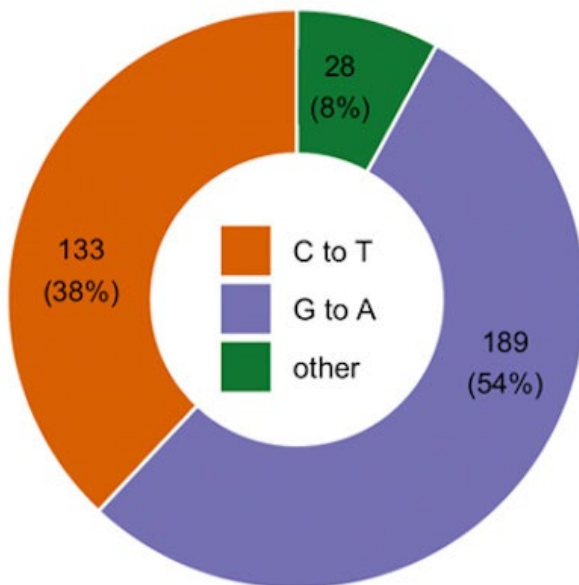
| Isolate Name                     | GenBank accession no. | SRA accession no. | Patient no.† | Lineage |
|----------------------------------|-----------------------|-------------------|--------------|---------|
| MpxV/human/USA/WA-UW-081786/2022 | OP257249.1            | SRR21236100       | NA           | B.1     |
| MpxV/human/USA/WA-UW-087527/2022 | OP257250.1            | SRR21236099       | NA           | B.1     |
| MpxV/human/USA/WA-UW-081272/2022 | OP257251.1            | SRR21236096       | NA           | B.1.1   |
| MpxV/human/USA/WA-UW-085937/2022 | OP257252.1            | SRR21236095       | NA           | B.1     |
| MpxV/human/USA/WA-UW-088081/2022 | OP257253.1            | SRR21236094       | NA           | B.1     |
| MpxV/human/USA/WA-UW-080706/2022 | OP257257.1            | SRR21236088       | NA           | B.1.1   |
| MpxV/human/USA/WA-UW-085684/2022 | OP257259.1            | SRR21236085       | NA           | B.1     |
| MpxV/human/USA/WA-UW-084325/2022 | OP257261.1            | SRR21236083       | NA           | B.1     |
| MpxV/human/USA/WA-UW-087619/2022 | OP257262.1            | SRR21236082       | NA           | B.1.3   |
| MpxV/human/USA/WA-UW-089987/2022 | OP257263.1            | SRR21236081       | NA           | B.1     |
| MpxV/human/USA/WA-UW-080976/2022 | OP257264.1            | SRR21236080       | NA           | B.1     |
| MpxV/human/USA/WA-UW-089183/2022 | OP257265.1            | SRR21236078       | NA           | B.1     |
| MpxV/human/USA/WA-UW-083179/2022 | OP257266.1            | SRR21236077       | NA           | B.1     |
| MpxV/human/USA/WA-UW-084449/2022 | OP257267.1            | SRR21236142       | NA           | B.1     |
| MpxV/human/USA/WA-UW-080617/2022 | OP310039.1            | SRR21236109       | NA           | B.1     |
| MpxV/human/USA/WA-UW-088656/2022 | OP310040.1            | SRR21236098       | NA           | B.1     |
| MpxV/human/USA/WA-UW-080185/2022 | OP310041.1            | SRR21236087       | NA           | B.1.1   |
| MpxV/human/USA/WA-UW-089266/2022 | OP310042.1            | SRR21236076       | NA           | B.1.1   |
| MpxV/human/USA/WA-UW-086841/2022 | OP310043.1            | SRR21236075       | NA           | B.1     |
| MpxV/human/USA/WA-UW-083888/2022 | OP310044.1            | SRR21236074       | NA           | B.1     |
| MpxV/human/USA/WA-UW-083914/2022 | OP310046.1            | SRR21236140       | NA           | B.1.2   |
| MpxV/human/USA/WA-UW-088871/2022 | OP310048.1            | SRR21236138       | NA           | B.1     |
| MpxV/human/USA/WA-UW-082029/2022 | OP310051.1            | SRR21236135       | NA           | B.1     |
| MpxV/human/USA/WA-UW-081935/2022 | OP310052.1            | SRR21236134       | NA           | B.1     |
| MpxV/human/USA/WA-UW-082670/2022 | OP310053.1            | SRR21236133       | NA           | B.1     |
| MpxV/human/USA/WA-UW-088213/2022 | OP310054.1            | SRR21236132       | NA           | B.1.1   |
| MpxV/human/USA/WA-UW-086360/2022 | OP310055.1            | SRR21236130       | NA           | B.1.1   |
| MpxV/human/USA/WA-UW-089437/2022 | OP310056.1            | SRR21236129       | NA           | B.1     |
| MpxV/human/USA/WA-UW-089714/2022 | OP310057.1            | SRR21236128       | NA           | B.1     |
| MpxV/human/USA/WA-UW-087349/2022 | OP310058.1            | SRR21236127       | NA           | B.1.1   |
| MpxV/human/USA/WA-UW-088764/2022 | OP310061.1            | SRR21236124       | NA           | B.1.1   |
| MpxV/human/USA/WA-UW-089836/2022 | OP310062.1            | SRR21236123       | NA           | B.1     |
| MpxV/human/USA/WA-UW-082810/2022 | OP310063.1            | SRR21236122       | NA           | B.1.1   |
| MpxV/human/USA/WA-UW-082497/2022 | OP310064.1            | SRR21236121       | NA           | B.1     |
| MpxV/human/USA/WA-UW-088973/2022 | OP310065.1            | SRR21236119       | NA           | B.1.3   |
| MpxV/human/USA/WA-UW-089152/2022 | OP310066.1            | SRR21236118       | NA           | B.1     |
| MpxV/human/USA/WA-UW-082625/2022 | OP310067.1            | SRR21236116       | NA           | B.1     |
| MpxV/human/USA/WA-UW-088225/2022 | OP310068.1            | SRR21236105       | NA           | B.1     |
| MpxV/human/USA/WA-UW-088152/2022 | OP310069.1            | SRR21236079       | NA           | B.1     |
| MpxV/human/USA/WA-UW-083083/2022 | OP328308.1            | SRR21236115       | NA           | B.1     |
| MpxV/human/USA/WA-UW-089142/2022 | OP328309.1            | SRR21236114       | NA           | B.1     |
| MpxV/human/USA/WA-UW-088725/2022 | OP328310.1            | SRR21236112       | NA           | B.1     |
| MpxV/human/USA/WA-UW-088258/2022 | OP328311.1            | SRR21236111       | NA           | B.1     |
| MpxV/human/USA/WA-UW-087564/2022 | OP328312.1            | SRR21236110       | NA           | B.1     |
| MpxV/human/USA/WA-UW-080100/2022 | OP392535.1            | SRR21524985       | NA           | B.1     |
| MpxV/human/USA/WA-UW-080292/2022 | OP392536.1            | SRR21524966       | NA           | B.1     |
| MpxV/human/USA/WA-UW-080834/2022 | OP392537.1            | SRR21524964       | NA           | B.1.3   |
| MpxV/human/USA/WA-UW-081469/2022 | OP442944.1            | SRR21524980       | NA           | B.1.3   |
| MpxV/human/USA/WA-UW-081714/2022 | OP392538.1            | SRR21524978       | NA           | B.1     |
| MpxV/human/USA/WA-UW-082215/2022 | OP392539.1            | SRR21524967       | NA           | B.1.3   |
| MpxV/human/USA/WA-UW-082488/2022 | OP442941.1            | SRR21236117       | NA           | B.1.8   |
| MpxV/human/USA/WA-UW-082880/2022 | OP392541.1            | SRR21524977       | NA           | B.1     |
| MpxV/human/USA/WA-UW-083506/2022 | OP392542.1            | SRR21524981       | NA           | B.1     |
| MpxV/human/USA/WA-UW-083584/2022 | OP392543.1            | SRR21524963       | NA           | B.1     |
| MpxV/human/USA/WA-UW-084331/2022 | OP442942.1            | SRR21236107       | NA           | B.1.4   |
| MpxV/human/USA/WA-UW-085393/2022 | OP442946.1            | SRR21524975       | NA           | B.1     |
| MpxV/human/USA/WA-UW-086026/2022 | OP442943.1            | SRR21236097       | NA           | B.1.8   |
| MpxV/human/USA/WA-UW-087094/2022 | OP392548.1            | SRR21524960       | NA           | B.1     |
| MpxV/human/USA/WA-UW-087104/2022 | OP392549.1            | SRR21524976       | NA           | B.1.1   |
| MpxV/human/USA/WA-UW-088325/2022 | OP392552.1            | SRR21524971       | NA           | B.1     |
| MpxV/human/USA/WA-UW-088960/2022 | OP392553.1            | SRR21524982       | NA           | B.1.4   |

\*Sequence data are available in GenBank in the National Center for Biotechnology Information (<https://www.ncbi.nlm.nih.gov>); raw reads have been deposited to the NCBI sequence read archive (SRA) under BioProject no. PRJNA862948. Bold text indicates resequencing was performed to confirm coinfection and these reads were deposited in separate SRRs.

†Patient numbers are indicated for sequences obtained from the same individual and correspond to tip labels on the phylogenetic tree in Figure, panel A.

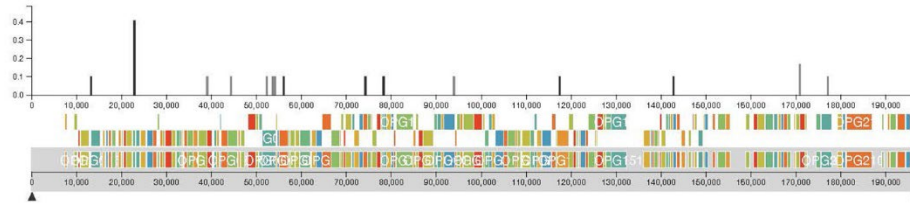
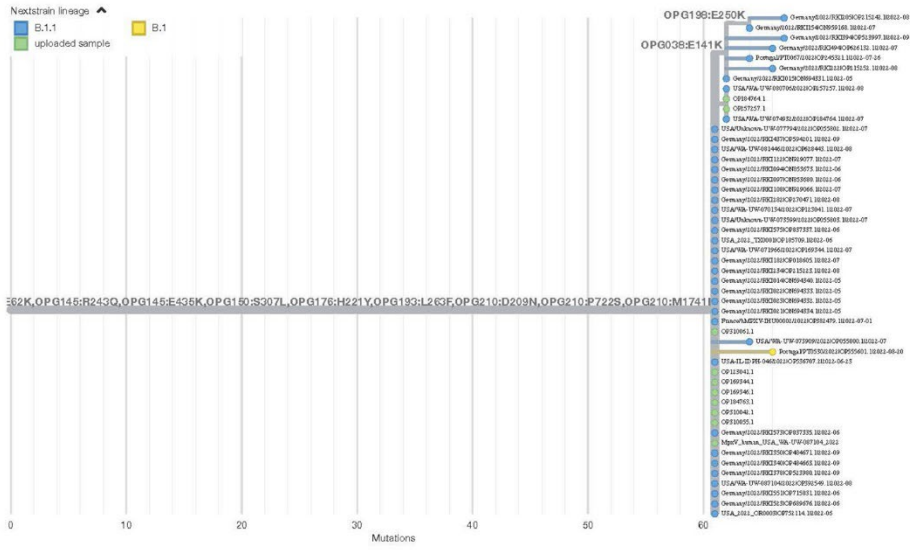


**Appendix Figure 1.** Unique amino acid (aa) mutations found during phylogenetic analysis of 109 genomes from early monkeypox virus outbreak, Washington, United States. After excluding genes with mutations (amino acid substitutions or deletions) in a single sample, most genes contained 1–2 mutations, except OPG189 and OPG210.

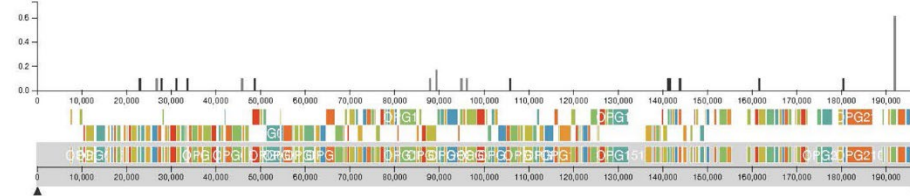
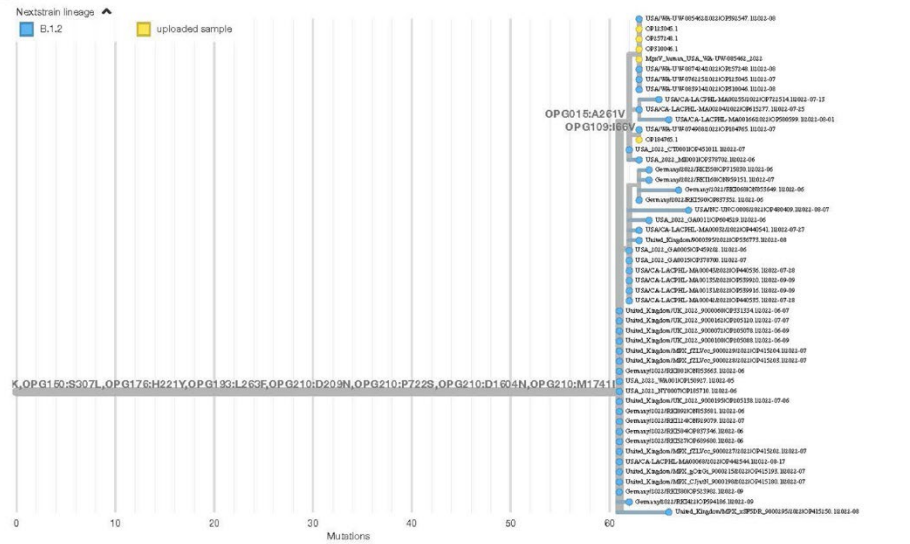


**Appendix Figure 2.** Distribution of mutations found during phylogenetic analysis of 109 genomes from early monkeypox virus outbreak, Washington, United States. We noted an abundance of G to A and C to T mutations, indicating likely apolipoprotein B mRNA editing catalytic polypeptide-like3 involvement, as reported by C.M. Gigante, et al., <https://doi.org/10.1126/science.add4153>.

# A

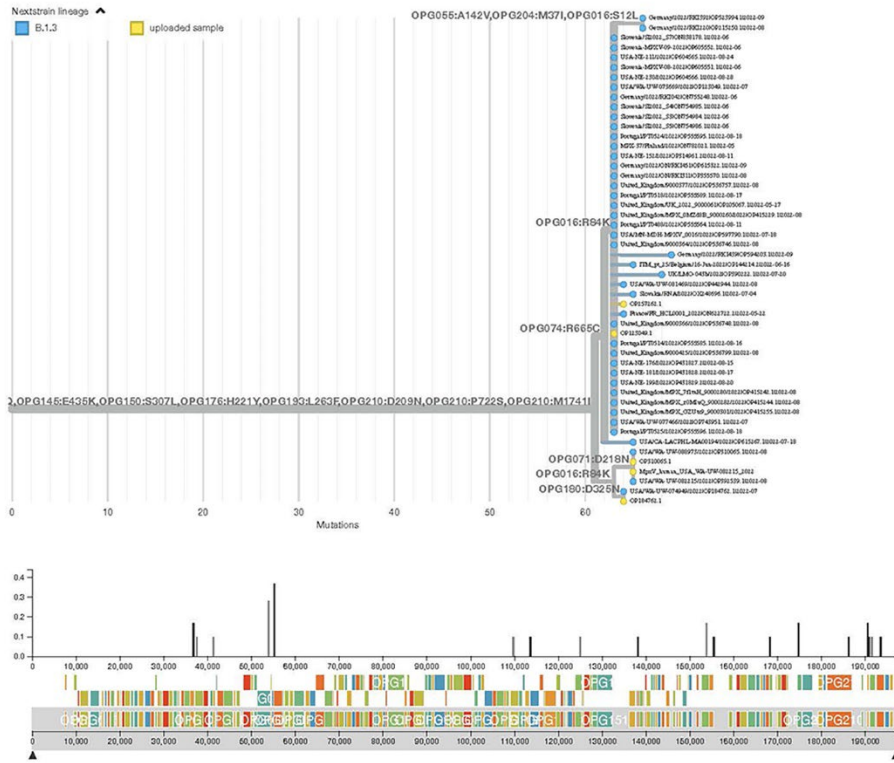


# B





C



D

