

3. Yi S, Choe YJ, Lim DS, Lee HR, Kim J, Kim YY, et al. Impact of national Covid-19 vaccination campaign, South Korea. *Vaccine*. 2022;40(36):3670–5. <https://doi.org/10.1016/j.vaccine.2022.05.002>
4. Madewell ZJ, Yang Y, Longini IM, Halloran ME, Dean NE. Household secondary attack rates of SARS-CoV-2 by variant and vaccination status: an updated systematic review and meta-analysis. *JAMA Netw Open*. 2022;5:e229317. <https://doi.org/10.1001/jamanetworkopen.2022.9317>
5. Baker JM, Nakayama JY, O'Hegarty M, McGowan A, Teran RA, Bart SM, et al. SARS-CoV-2 B.1.1.529 (Omicron) variant transmission within households—four U.S. jurisdictions, November 2021–February 2022. *MMWR Morb Mortal Wkly Rep*. 2022;71:341–6. <https://doi.org/10.15585/mmwr.mm7109e1>
6. Accorsi EK, Britton A, Fleming-Dutra KE, Smith ZR, Shang N, Derado G, et al. Association between 3 doses of mRNA COVID-19 vaccine and symptomatic infection caused by the SARS-CoV-2 Omicron and Delta variants. *JAMA*. 2022;327:639–51. <https://doi.org/10.1001/jama.2022.0470>

Address for correspondence: Young-Joon Park, (28159) Korea Disease Control and Prevention Agency, Osong Health Technology Administration Complex, 187, Osongsaengmyeong 2-ro, Osong-eup, Heungdeok-gu, Cheongju-si, Chungcheongbuk-do, South Korea; email: pahmun@korea.kr

Estimating COVID-19 Vaccine Effectiveness for Skilled Nursing Facility Healthcare Personnel, California, USA

Monise Magro, Andrea Parriott, Tisha Mitsunaga, Erin Epton

Author affiliation: California Department of Public Health, Richmond, California, USA

DOI: <https://doi.org/10.3201/eid2808.220650>

We estimated real-world vaccine effectiveness among skilled nursing facility healthcare personnel who were regularly tested for SARS-CoV-2 infection in California, USA, during January–March 2021. Vaccine effectiveness for fully vaccinated healthcare personnel was 73.3% (95% CI 57.5%–83.3%). We observed high real-world vaccine effectiveness in this population.

The COVID-19 pandemic has severely affected skilled nursing facility (SNF) residents and healthcare personnel (HCP) (1,2). HCP are at high risk for SARS-CoV-2 exposure during patient care (3,4), and were among the earliest groups prioritized for COVID-19 vaccination starting in mid-December 2020 (5). Through June 2021, all SNF HCP in California, regardless of vaccination status or symptoms, were required to undergo at least weekly screening testing for SARS-CoV-2 infection (6). This system provided us with ideal conditions to assess vaccination effectiveness.

We estimated real-world effectiveness of COVID-19 vaccination against PCR-confirmed SARS-CoV-2 infections in SNF HCP in California by using a matched case-control study. We identified SNF HCP COVID-19 case-patients and controls from the statewide communicable disease reporting system (Appendix, <https://wwwnc.cdc.gov/EID/article/28/8/22-0650-App1.pdf>). We selected persons 18–54 years of age (Appendix) with specimen collection dates during January–March 2021. We obtained COVID-19 vaccination status from the California Immunization Registry (Appendix).

We defined partial vaccination as ≥ 1 vaccine dose received before specimen collection with a second dose (if received, for a 2-dose series vaccine) < 14 days before collection, and full vaccination as the second dose (or 1 dose in a single-dose series) received ≥ 14 days before specimen collection. We matched case-patients to controls on specimen collection date and SNF county by using simple random sampling (without replacement) and a 1:1 ratio. We applied conditional logistic regression to estimate vaccine effectiveness for partial and full vaccination (compared with no vaccination).

Because of the density-based selection of the control series, in which controls are time-matched to case-patients, drawing from a risk set of persons who are at risk for becoming case-patients at the time the case is detected, the odds ratio approximates the incidence rate ratio without reliance on the rare disease assumption (7). We examined age, sex, and California Healthy Places Index (HPI) composite health score (8) by using HCP residential address and race and ethnicity (Appendix) as potential confounders.

We performed the analysis before and after excluding case-patients and controls who had previously confirmed positive test results within 90-day and 180-day windows (Table). We performed analyses by using SAS version 9.4 (<https://www.sas.com>). This study received an exempt determination from the California Committee for the Protection of Human Subjects.

Table. Estimated COVID-19 vaccine effectiveness among skilled nursing facility healthcare personnel, California, USA, January–March 2021*

Models	Vaccination status†	No.		Vaccine effectiveness (95% CI), %
		Case-patients	Controls	
No removal of previous positive results (4,238 case–control participants; 2,119 matched pairs)	Partial	465	629	37.5 (27.7–46.0)
	Full	36	94	71.7 (55.9–81.8)
Removal of previous positive results within 90 d (3,742 case–control participants; 1,871 matched pairs)	Partial	430	567	35.6 (24.8–44.8)
	Full	32	89	73.3 (57.5–83.3)
Removal of previous positive results within 180 d (3,424 case–control participants; 1,712 matched pairs)	Partial	394	524	36.3 (25.1–45.8)
	Full	25	70	72.7 (54.3–83.7)

*Unadjusted analysis results are presented. Adjustment for sex, age, and Healthy Places Index scores did not substantially alter these estimates.

†Partial vaccination: ≥ 1 dose before specimen collection date but final dose < 14 d before specimen collection date; full vaccination: final dose ≥ 14 d before specimen collection date.

Of the 4,238 study participants, 28.9% (1,224) were partially or fully vaccinated; 71.1% (3,014) were classified as unvaccinated, including 47.8% (2,025) who did not have a California Immunization Registry COVID-19 vaccination record and 23.3% (989) who were vaccinated on or after specimen collection date. A higher proportion of controls than case-patients were partially or fully vaccinated (Table). Among the fully vaccinated, 91.5% received Pfizer-BioNTech vaccine (<https://www.pfizer.com>) and 8.5% received Moderna vaccine (<https://www.modernatx.com>). Among the partially vaccinated, 54% received Pfizer-BioNTech vaccine, 45% received Moderna vaccine, and $< 1\%$ received a combination of 2 different vaccines (e.g., Pfizer-BioNTech and Moderna). All Johnson & Johnson/Janssen vaccine (<https://www.janssencovid19vaccine.com>) recipients, representing 1.7% of participants matched to a vaccination record, were classified as unvaccinated because the vaccination date was after the specimen collection date.

Vaccine effectiveness was 73.3% (95% CI 57.5%–83.3%) for full vaccination (Table). We observed no substantial change ($< 10\%$) in vaccine effectiveness estimates produced by the models with or without removal of previous positive test results (Table). We assumed the model excluding previous positive test results within 90 days was the most appropriate because this model excludes persons with potential residual viral shedding and agrees with the national COVID-19 disease (new) case definition (9) that excludes persons who had previous positive test results within 90 days. Adjustment for age, sex, and HPI score did not change vaccine effectiveness estimates by $> 10\%$, and inclusion of race/ethnicity did not alter the full vaccination estimate by $> 10\%$ (Appendix Tables 2–5).

A major strength of our study is that SNF HCP were tested regularly irrespective of symptoms or known exposure, enabling us to capture their infection status and estimate vaccine effectiveness for prevention of COVID-19, including asymptomatic infection. The unchanged vaccine effectiveness estimate after adjustment for HPI score reflects that COVID-19

vaccination efforts for SNF HCP engaged persons regardless of their residential community. One limitation is that the study period was before the Delta or Omicron virus variants became dominant. Because serial testing of vaccinated SNF HCP in California stopped during July 2021, the study period could not be expanded to examine effectiveness against later variants or changes in vaccine effectiveness over time since vaccination. In addition, a higher proportion of case-patients and controls were classified as partially vaccinated, rather than fully vaccinated, during the study period, and we did not have sufficient follow-up time to assess waning of vaccine effectiveness. Some residents could have been misclassified as HCP, but the age selection criteria limiting age group helped minimize this factor. Finally, misclassification of vaccination status is possible, but most likely is nondifferential, which we would expect to bias the odds ratio toward the null.

In conclusion, we observed high real-world effectiveness of COVID-19 vaccination in SNF HCP in California. Our methods can guide future studies evaluating vaccine effectiveness.

Acknowledgments

The California Department of Public Health thanks all California healthcare personnel, laboratorians, and local health departments throughout the COVID-19 pandemic for their diligent work. We thank the California Department of Public Health COVID-19 Science Branch and Data teams and the Center for Health Care Quality Skilled Nursing Facilities Analytics team for their support and data resources provided to successfully complete this study.

About the Author

Dr. Magro is a research scientist in the Healthcare-Associated Infections Program, Center for Health Care Quality, California Department of Public Health, Richmond, CA. Her primary research interests are healthcare-associated infections and antimicrobial drug resistance.

References

1. AARP Public Policy Institute. Issues. Long-term services and supports and family caregiving. AARP Nursing Home Dashboard [cited 2022 Jan 11]. <https://www.aarp.org/ppi/issues/caregiving/info-2020/nursing-home-covid-dashboard.html>
2. Kaiser Family Foundation. Coronavirus (COVID-19). Nursing homes experienced steeper increase in COVID-19 cases and deaths in August 2021 than the rest of the country [cited 2022 Jan 11]. <https://www.kff.org/coronavirus-covid-19/issue-brief/nursing-homes-experienced-steeper-increase-in-covid-19-cases-and-deaths-in-august-2021-than-the-rest-of-the-country>
3. Roth A, Feller S, Ruhnau A, Plamp L, Viereck U, Weber K, et al. Characterization of COVID-19 outbreaks in three nursing homes during the first wave in Berlin, Germany. *Sci Rep*. 2021;11:24441. <https://doi.org/10.1038/s41598-021-04115-9>
4. Taylor J, Carter RJ, Lehnertz N, Kazazian L, Sullivan M, Wang X, et al.; Minnesota Long-Term Care COVID-19 Response Group. Serial testing for SARS-CoV-2 and virus whole genome sequencing inform infection risk at two skilled nursing facilities with COVID-19 outbreaks – Minnesota, April–June 2020. *MMWR Morb Mortal Wkly Rep*. 2020;69:1288–95. <https://doi.org/10.15585/mmwr.mm6937a3>
5. Dooling K, Marin M, Wallace M, McClung N, Chamberland M, Lee GM, et al. The Advisory Committee on Immunization Practices' updated interim recommendation for allocation of COVID-19 vaccine – United States, December 2020. *MMWR Morb Mortal Wkly Rep*. 2021;69:1657–60. <https://doi.org/10.15585/mmwr.mm695152e2>
6. California Department of Public Health. All facilities letter 20–53 [cited 2022 Jan 6]. <https://www.cdph.ca.gov/Programs/CHCQ/LCP/Pages/AFL-20-53.aspx>
7. Rothman KJ, Greenland S, Lash T. Case-control studies. In: Rothman KJ, Greenland S, Lash T. *Modern epidemiology*, 3rd ed. Philadelphia: Lippincott Williams and Wilkins; 2008. p. 124–5.
8. Public Health Alliance of Southern California. The California healthy places index (HPI) [cited 2022 Jan 11]. <https://healthyplacesindex.org>
9. Council of State and Territorial Epidemiologists (CSTE). Update to the standardized surveillance case definition and national notification for 2019 novel coronavirus disease (COVID-19). CSTE position statement 21-ID-01. 2021 Aug [cited 2022 Jan 20]. https://cdn.ymaws.com/www.cste.org/resource/resmgr/21-ID-01_COVID-19_updated_Au.pdf

Address for correspondence: Monise Magro, Healthcare-Associated Infections Program, California Department of Public Health, 850 Marina Bay Pkwy, Richmond, CA 94804, USA; email: monise.magro@cdph.ca.gov

COMMENT LETTERS

Seroprevalence of Chikungunya Virus, Jamaica, and New Tools for Surveillance

Andre R.R. Freitas, Laura Pezzi, Luciano P.G. Cavalcanti, Fabrice Simon

Author affiliations: Faculdade São Leopoldo Mandic, Campinas, São Paulo, Brazil (A.R.R. Freitas); Unité des Virus Émergents, INSERM-IRD, Aix-Marseille Université, Marseille, France (L. Pezzi, F. Simon); Universidade Federal do Ceará, Fortaleza, Brazil (L.P.G. Cavalcanti)

DOI: <https://doi.org/10.3201/eid2808.220558>

To the Editor: We read with great interest the recent article by Anzinger et al. (1), who found a seroprevalence of 83.6% for chikungunya in pregnant women in the metropolitan region of Kingston, Jamaica. These data are similar to the seroprevalence found nationwide by the Jamaica Health and Lifestyle Survey III, 2016–2017 (Ministry of Health and Welfare, Jamaica), which was 82% among women, 78.5% among men, and 80.4% overall. These values enable estimating a total of 2,187,325 chikungunya infections in Jamaica during the 2014 epidemic. The government of Jamaica reported

1,420 cases of chikungunya to PAHO in 2014 and no deaths (2), even correcting for the proportion of unapparent infections, the proportion of cases captured by passive surveillance was <0.1%. Although there were no officially reported deaths in Jamaica, 2 cases of newborn deaths from chikungunya were reported (3), and 1 study found 2,499 excess deaths (2) during the epidemic period. The increase in mortality was greater for the extremes of age, but it occurred in several age groups (2).

Anzinger et al.'s results reinforce the findings of Sharp et al. (4), who showed the importance of active surveillance to assess chikungunya burden. Through active surveillance implemented in Puerto Rico, it was possible to verify that 8% of symptomatic cases of chikungunya identified were captured by passive surveillance. In addition, passive surveillance identified 7 deaths, whereas active surveillance was able to confirm 31 deaths from chikungunya. However, 1,310 excess deaths were reported during the Puerto Rico epidemic in 2014 (5).

The introduction of chikungunya in the Americas has brought greater complexity to surveillance in the region, which includes some low-resource countries. It is essential to establish active and viable surveillance tools and, perhaps, new case definitions in order to better assess the population burden of this disease and the complications of acute and chronic cases.

Estimating COVID-19 Vaccine Effectiveness for Skilled Nursing Facility Healthcare Personnel, California, USA

Appendix

Healthcare Personnel Definition

Healthcare personnel (HCP) is a broad category that includes anyone working at a skilled nursing facility (SNF) (both paid and unpaid) who has the potential for direct or indirect exposure to residents, including but not limited to nursing, environmental services, and administrative staff.

Age Selection Criteria

We limited the analysis to include subjects 18–54 years of age to minimize the risk for misclassifying SNF residents as HCP. The age cutoff was determined based on the SNF HCP case data age distribution (before selecting the study period January–March 2021) and the upper cutoff represented the 75th percentile. Although this conservative approach excluded older HCP, it still captured most HCP.

Data Sources and Preparation

California Reportable Disease Information Exchange (CalREDIE)

We obtained cases and controls from the COVID-19 case registry (containing patient demographic, laboratory, epidemiology, and case investigation information) and COVID-19 positive and negative (PCR-electronic laboratory reporting (ELR) test results (ELR test results dataset), from data in CalREDIE, the California Department of Public Health (CDPH) electronic notifiable communicable disease reporting and surveillance system (*I*) merged with data reported from San Diego and Los Angeles Counties (which use separate disease reporting systems). Most samples were collected by nasopharyngeal or nasal swabs by staff at the skilled nursing facility and submitted to their preferred laboratory for PCR testing for detection of SARS-CoV-2.

Cases

We identified SNF HCP by using a deterministic matching algorithm developed by CDPH staff (COVID-19 congregate setting case dataset). The algorithm loops through all relevant CalREDIE incident and outbreak field sets. The algorithm first tries to link each case to a congregate setting facility by standardizing the case address and matching based on a dataset of congregate healthcare, correctional, educational, and childcare facility addresses. If there is no match to a specific facility, the algorithm looks for a congregate setting type based on drop down selection choices and open-text key word searches by using language standardized in a congregate setting cross reference. The algorithm also searches specific congregate settings and occupation fields to assign whether the case is a staff, resident, or student of a congregate setting. To obtain the most appropriate specimen collection date, we matched the HCP case data to COVID-19 positive PCR ELR test results based on the CalREDIE disease incident identification number (incident ID) associated with the laboratory report. If more than one positive PCR ELR test result was reported for the same incident ID within the study period (January–March 2021), we selected the test result with the earliest collection date. We performed a combination of manual review and fuzzy matching (i.e., edit distance) to search different CalREDIE free-text fields for a SNF name or address when the provided congregate setting dataset was able to capture cases associated with a SNF congregate setting but a SNF name and facility ID was not detected with their address algorithm. In those cases, we calculated edit distance between the CalREDIE congregate setting name field and the SNF name obtained from the CDPH Licensing and Certification healthcare facility list [publicly available at the California Health and Human Services Open Data Portal (2)] to assist in the identification of potential SNF names, which we then manually reviewed records with a compged (3) score <2000, spedis (4) score <30 or a Jaro-Winkler distance (5) >0.79. These cut off values used in these metrics were determined from manual inspection of the data and were considered a reasonable threshold that could contain a SNF name match. We excluded SNF co-located with a residential care facility to avoid selecting HCP working at the residential care part of the facility who were not required to receive regular screening tests. Because San Diego County uses its own disease reporting system and does not report into CalREDIE, it was underrepresented in the case data and therefore removed from the analysis. There were 2,159 eligible SNF HCP cases.

Controls

We obtained controls from persons who had COVID-19 negative PCR ELR test results using an address standardization algorithm adapted from the algorithm used to produce the COVID-19 case congregate setting dataset since the occupation field was rarely completed in the ELR test results dataset. We standardized the ELR residential address and facility address fields, as well as the SNF addresses of 1,044 included SNF licensed by the CDPH Licensing and Certification Program. We followed the same selection/exclusion criteria applied for the cases by maintaining only those records with 18–54 years of age working in SNF located in the same counties present in the eligible case-dataset, and excluding SNF associated with a residential care facility. Duplicate records, incomplete and out-of-state addresses, persons experiencing homelessness, or those missing a residential or facility address were excluded from the analysis. We matched the ELR negative test result facility address with the SNF address keeping only records with a residential address that was different from the facility address. To ensure the difference was not due to an address typo or misspelling, we applied fuzzy matching (i.e., edit distance) to quantify how dissimilar two strings were from each other (residential address compared with facility address). The cut off values used for the edit distance metrics in the control group were determined from manual inspection of the data and were considered a reasonable threshold that could contain an address match. We flagged records that had within the residential address an identifier that indicated a residential address (e.g., apartment, unit, space numbers) or a potential business/commercial address (i.e., suite number). Using a conservative approach, we excluded records if

- a business identifier was present; or
- compged score was ≤ 400 and spedis score ≤ 28 ; or
- Jaro-Winkler distance was > 0.85 and records had the same street name (or number) and zip code, and a residential identifier was not present; or
- the street name and number were the same but not necessarily the zip code (to further exclude records that might have misspellings in zip code but otherwise had the same address).

To ensure exclusion of congregate setting residents and other healthcare facility patients, we also applied fuzzy matching to quantify how dissimilar the residential addresses were compared with addresses from licensed healthcare facilities, facilities regulated by the California

Department of Social Services (e.g., adult residential care facilities), and correctional facilities (e.g., county jails, prisons, detention centers, and pre-trial facilities). We flagged records with compged score ≤ 500 or spedis ≤ 21 and persons residing in the same residential address, which could be indicative of a congregate setting and not a residential address for further review and exclusion. We excluded records if

- the street number and name were the same; or
- the street number, zip code, and the street number of a street name (i.e., this only applied to street names that had numbers as part of their name such as ‘35TH ST’) were the same; or
- the street number was the same, the facility address contained a residential identifier (e.g., unit number) and the residential address was flagged to have a residential identifier.

We created a unique individual identifier by using first and last names and date of birth since we did not have a unique person identifier in the available dataset and the incident ID in which the laboratory report was associated with was not commonly the same across multiple tests for the same individual. We used the created unique person identifier to further exclude records if more than 2 persons resided in the same address and no residential identifier present (e.g., apartment number) for a least one of the records to increase the probability that selected controls were HCP rather than congregate setting residents. There were 344,930 eligible SNF HCP controls. Eligible controls were not person-specific, but test-specific, so the same individual could be in the control group more than once if the specimen collection date was unique.

Identification and Flagging of Previous Positive Test Results in Eligible Cases and Controls

We identified prior positives in both eligible cases and controls by using the positive PCR ELR tests dataset selecting the specimen collection date from July, 2020 through March, 2021. We did an exact match on first and last names (variable names were standardized: uppercased and spaces and characters removed), and DOB. We flagged records with a positive test within 90 days (which accounted for 10.3% of the eligible cases and 2.5% of the eligible controls) and 180 days (13.9% of the eligible cases and 8.3% of the eligible controls) for later exclusion in subsequent conditional logistic regression analyses.

Case–Control Selection and County Representation

We matched cases and controls based on specimen collection date and county of the SNF (which could be different than the county of HCP residence). Of 2,159 eligible cases, 2,119 (98.1%) matched to a control subject and were included in the analysis for a total of 4,238 case-control subjects. A total of 39 (69.6%) of 56 California counties with a SNF present and 772 (73.9%) of 1,044 licensed SNF (excluding those associated with a residential care facility and from San Diego County) were included in the case-control matched pair dataset. Excluded counties comprised San Diego due to incomplete data in the cases and some northern counties (typically small rural counties with small numbers of SNF) with no matching controls due to low test counts. A total of 10 counties accounted for 84.8% (n = 3592) of the case-control subjects with Los Angeles County accounting for 43.3% (n = 1834) of the case-control subjects (Appendix Table 1).

COVID-19 Vaccine Data

ELR positive and negative test results were linked to the California Immunization Registry (CAIR) by CDPH staff applying similar methodology used for the identification of California COVID-19 post-vaccination cases and were matched based on data received and processed through early August 2021. A probabilistic match approach was completed with R software (<https://www.r-project.org/>) using the RecordLinkage package; records were matched based on an exact match on zip code of residence and date of birth, and a fuzzy match on first and last name (variable names were standardized: uppercased and spaces and special characters were removed). We manually reviewed all one-to-many records and any records with a weight ≤ 0.9525 to verify whether they were an actual match (retaining the match with the highest weight if two vaccine records were matched to an individual) or if a data entry error caused the individual vaccine record to be split into two vaccine records (e.g., first dose in one record and the second dose in a different record), requiring them to be merged into one vaccine record. Validating the matched records involved examining additional variables (i.e., sex and residential address) available in CAIR against the case-control dataset. CDPH decided on 0.9525 as the “match” probability threshold for post-vaccination case identification. Thus, when a laboratory record matched to a CAIR record with a probability of 0.9525 or higher, this record would be judged a “match” and would count as a post-vaccination case. The high threshold of 0.9525 was chosen after extensive manual review to minimize the risk for records of different persons being

matched and resulting in inflated post-vaccination case counts. Over 98.7% of the case-control subjects that were matched to a vaccine record had a weight >0.9525 , 84.1% a weight of 1 (exact match) and only 1.3% a weight ≤ 0.9525 (range: 0.9–0.95). After data cleaning, records were linked to the case-control matched dataset by using the CalREDIE disease incident ID that the laboratory report is associated with. The Appendix Figure summarizes the main data processes and methods used for the identification of SNF HCP for inclusion in this study.

California Healthy Places Index (HPI) Data

We evaluated a composite health equity vulnerability measure (California HPI score) (6, 7) as a potential confounder in our regression model (Appendix Table 2). Healthy Places Index data are publicly available at the census tract level, although not all census tracts are given an HPI score (8). To obtain census tracts for each case-control subject, we standardized residential addresses and geocoded them by using the Census geocoder (9). We used ArcGIS (<https://www.esri.com/en-us/arcgis/products/arcgis-desktop/overview>) by using ArcMap version 10.7.1 to geocode any addresses not matched by using the Census geocoder. Only 102 (2.4%) subjects' addresses could not be geocoded and did not have a census tract assigned. We assigned 4,136 (97.6%) case-control subjects to a census tract and matched 3,388 (79.9%) case-control subjects to census tracts with an HPI score. Of those not matched by census tract, we were able to match 817 (19.3%) subjects to an HPI score by zip code. For 33 (0.8%) subjects that did not match previously (e.g., had an incomplete address to be geocoded, were missing a zip code, or did not have an HPI score calculated), we calculated an HPI weighted average by county of residence weighted by population at the county by using the population variable available at the HPI in the census tract file.

Race and Ethnicity

We assigned the variable race/ethnicity as Hispanic or Latino (regardless of the race reported) to subjects that reported 'Hispanic or Latino' for ethnicity; otherwise, we assigned race/ethnicity according to the race reported. We combined Black or African American, American Indian or Alaska Native, Native Hawaiian or Other Pacific Islander, and Multi-race into one race/ethnicity category due to small sample size concerns. Although the races from the combined category could experience different COVID-19 disease risk, the race/ethnicity categorization was used as a covariate and not as the primary exposure of interest, and not intended for interpretation of their odds ratio. We set race/ethnicity to missing when not

available, not informative (i.e., “Unknown”), or when reported as “Other.” We set “Other” race/ethnicity category to missing as a conservative approach due to concerns about data quality (i.e., mistakenly reporting “Other” instead of “Unknown”). Data for race/ethnicity was missing for a high proportion of the subjects (22% in cases and 48% in controls). Thus, when accounting for race/ethnicity in the model, 59.1% (based on dataset without removal of prior positive tests within 90- and 180-day windows) of the study subjects were excluded as the entire matched case-control pair is removed in a conditional logistic regression when a covariate is missing for one of the matched pair subjects (Appendix Table 3). After adjustment of race/ethnicity, the VE estimate for full vaccination slightly increased in all models, ranging from 76.1 to 82.8% (increase ranged from 5% to 13.9% compared with the VE for the respective unadjusted models) and partial vaccination decreased, ranging from 20.3% to 24.9% (decrease ranged 31.4% to 45.9% decrease compared with the VE for the respective unadjusted models) depending on the model (Appendix Table 3). The observed VE estimate variability is likely due to the high proportion of observations removed from the analysis, which considerably reduced sample size and widened VE estimate confidence intervals, making adjustment of this covariate by using the available data not ideal. Thus, we examined the use of demographic race/ethnicity data from the American Community Survey (ACS) (5-year estimate, 2015–2019 at the census tract level) (<https://www.census.gov/programs-surveys/acs>). We assigned race/ethnicity as ‘Hispanic or Latino’ (regardless of race) when ethnicity indicated ‘Hispanic or Latino’, otherwise we assigned the race reported. We obtained the race/ethnicity with the highest proportion for each census tract. After merging these data to the study subjects’ census tracts, only Hispanic or Latino, White, Asian, and Black or African American were within the race/ethnicity categories observed. We adjusted the model by race/ethnicity by using ACS data (data not shown) and the VE estimates decreased by 3.5% for partial vaccination and 0.4% for full vaccination compared with the unadjusted model. We compared race/ethnicity generated from ACS data with the race/ethnicity categories generated from the case-control subject data (when available) and observed low concordance (<50%). Considering the diverse race/ethnicity population in California and the low concordance observed, we determined that it would not be suitable to apply the adjustment by using ACS data in the final model.

References

1. California Department of Public Health. California Reportable Disease Information Exchange. [cited 2022 Jan 27] <https://www.cdph.ca.gov/Programs/CID/DCDC/Pages/CalREDIE.aspx>
2. California Health and Human Services Agency Open Data. Licensed Healthcare Facility Listing [cited 2022 Jan 11] <https://data.chhs.ca.gov/dataset/licensed-healthcare-facility-listing>
3. SAS Help Center. Functions and call routines. COMPGED function [cited 2022 Jan 11] <https://documentation.sas.com/doc/en/vdmmlcdc/8.1/lefunctionsref/p1r4l9jw gatgtn1ko81fyjys4s7.htm>
4. SAS Help Center. Functions and call routines. SPEDros information service function [cited 2022 Jan 11] <https://documentation.sas.com/doc/en/vdmmlcdc/8.1/lefunctionsref/p0vmuxh8ljfn7on164nsgvmdrc5d.htm>
5. Cohen WW, Ravikumar P, Fienberg SE. A comparison of string distance metrics for name-matching tasks. *IIWeb*; 2003: Citeseer; 2003. p. 73–8 [cited 2022 May 26]. <https://www.cs.cmu.edu/~wcohen/postscript/ijcai-ws-2003.pdf>
6. Public Health Alliance of Southern California. The California Healthy Places Index (HPI). About. [cited 2022 Jan 11] <https://healthyplacesindex.org/about>
7. Maizlish N, Delaney T, Dowling H, Chapman DA, Sabo R, Woolf S, et al. California healthy places index: frames matter. *Public Health Rep.* 2019;134:354–62. [PubMed](https://doi.org/10.1177/0033354919849882) <https://doi.org/10.1177/0033354919849882>
8. Public Health Alliance of Southern California. The California Healthy Places Index (HPI). Data and Reports. [cited 2022 Jan 11] <https://healthyplacesindex.org/data-reports>
9. United States Census Bureau. Welcome to Geocoder [cited 2022 Jan 12]. <https://geocoding.geo.census.gov>

Appendix Table 1. Top 10 California counties and skilled nursing facilities represented in case-control matched pair dataset

Counties	Name	Case-control subjects		Skilled nursing facility (SNF)			
		No.	%	No. in study	% in study	No. of total available*	% represented†
Top 10							
1	Los Angeles	1,834	43.3	306	39.6	371	82.5
2	Alameda	284	6.7	55	7.1	67	82.1
3	Orange	268	6.3	49	6.3	64	76.6
4	Contra Costa	252	5.9	29	3.8	29	100
5	Sacramento	230	5.4	34	4.4	35	97.1
6	Santa Clara	220	5.2	38	4.9	45	84.4
7	Sonoma	196	4.6	13	1.7	18	72.2
8	San Bernardino	108	2.5	31	4.0	51	60.8
9	Fresno	102	2.4	24	3.1	28	85.7
10	San Joaquin	98	2.3	16	2.1	25	64
	Other counties	646	15.2	177	22.9	285	62.1
	Total	4,238	100.0	772	100.0	1,018	

*Total SNF (available) located in each county excluding those associated with a residential care facility.

†Calculated as number of SNF in the study in each county divided by SNF available (located) in each county, per 100.

Appendix Table 2. Estimated COVID-19 vaccine effectiveness among California skilled nursing facility healthcare personnel, adjusted by Healthy Places Index score based on reported data, January–March 2021

Models	Variables	No.		VE* and 95% CI† (%)	OR and 95% Wald CI	p value
		Case-patients	Controls			
No removal of prior positives (4,238 case-control subjects; 2,119 matched pairs)	Vaccination status					
	Partial	465	629	37.4 (27.5–46.0)	0.63 (0.54–0.73)	<0.0001
	Full	36	94	71.6 (55.7–81.7)	0.28 (0.18–0.44)	<0.0001
Removal of prior positives within 90 d (3,742 case-controls subjects; 1,871 matched pairs)	HPI score‡	2,119	2,119		0.85 (0.73–0.99)	0.0403
	Vaccination status					
	Partial	430	567	35.5 (24.7–44.7)	0.65 (0.55–0.75)	<0.0001
Removal of prior positives within 180 d (3,424 case-controls subjects; 1,712 matched pairs)	Full	32	89	73.2 (57.3–83.2)	0.27 (0.17–0.43)	<0.0001
	HPI score	1,871	1,871		0.9 (0.76–1.05)	0.1801
	Vaccination status					
Removal of prior positives within 180 d (3,424 case-controls subjects; 1,712 matched pairs)	Partial	394	524	36.2 (25–45.7)	0.64 (0.54–0.75)	<0.0001
	Full	25	70	72.5 (54.0–83.6)	0.28 (0.16–0.46)	<0.0001
	HPI score	1,712	1,712		0.89 (0.76–1.06)	0.1914

*Vaccine effectiveness.

†Confidence intervals.

‡Healthy Places Index score.

Appendix Table 3. Estimated COVID-19 vaccine effectiveness among California skilled nursing facility healthcare personnel, adjusted by race and ethnicity based on reported data, January–March 2021

Models	Variables	No.		VE* and 95% CI† (%)	OR‡ and 95% Wald CI	p value
		Case-patients	Controls			
No removal of prior positives (1,732 case-control subjects; 866 matched pairs)	Vaccination status					
	Partial	217	251	20.3 (0.1–36.4)	0.80 (0.64–1.0)	0.0493
	Full	12	33	76.1 (46.7–89.3)	0.24 (0.11–0.53)	0.0005
	Race/ethnicity§					
	Hispanic or Latino	406	313		Reference	
Removal of prior positives within 90 d (1,532 case-control subjects; 766 matched pairs)	Asian	222	236		0.75 (0.58–0.97)	0.0266
	Combined races	115	109		0.73 (0.53–1.02)	0.0638
	White	123	208		0.43 (0.32–0.57)	<0.0001
	Vaccination status					
	Partial	195	228	21.3 (–0.1 to 38.2)	0.79 (0.62–1.0)	0.0513
Removal of prior positives within 180 d (1,378 case-control subjects; 689 matched pairs)	Full	11	31	77.0 (46.2–90.2)	0.23 (0.1–0.54)	0.0007
	Race/ethnicity					
	Hispanic or Latino	352	277		Reference	
	Asian	199	215		0.76 (0.58–0.99)	0.0431
	Combined races	102	96		0.73 (0.51–1.04)	0.0818
Removal of prior positives within 180 d (1,378 case-control subjects; 689 matched pairs)	White	113	178		0.47 (0.35–0.64)	<0.0001
	Vaccination status					
	Partial	174	208	24.9 (3.3–41.7)	0.75 (0.58–0.97)	0.0265
	Full	5	20	82.8 (48.1–94.3)	0.17 (0.06–0.52)	0.0018
	Race/ethnicity					
Removal of prior positives within 180 d (1,378 case-control subjects; 689 matched pairs)	Hispanic or Latino	312	244		Reference	
	Asian	181	193		0.76 (0.58–1.01)	0.0612
	Combined races	90	86		0.72 (0.49–1.05)	0.0833
	White	106	166		0.46 (0.34–0.64)	<0.0001

*Vaccine effectiveness.

†Confidence intervals.

‡Odds ratio.

§Combined races included Black or African American, American Indian or Alaska Native, Native Hawaiian or Other Pacific Islander, and Multi-race.

Appendix Table 4. Estimated COVID-19 vaccine effectiveness among California skilled nursing facility healthcare personnel, adjusted by age based on reported data, January–March 2021

Models	Variables	No.		VE* and 95% CI† (%)	OR‡ and 95% Wald CI	p value
		Case-patients	Controls			
No removal of prior positives (4,238 case-control subjects; 2,119 matched pairs)	Vaccination status					
	Partial	465	629	37.0 (27.0–45.6)	0.63 (0.54–0.73)	<0.0001
	Full	36	94	71.0 (54.8–81.4)	0.29 (0.19–0.45)	<0.0001
Removal of prior positives within 90 d (3,742 case-control subjects; 1,871 matched pairs)	Age	2,119	2,119		1.00 (0.99–1.00)	0.2206
	Vaccination status					
	Partial	430	567	35 (24.1–44.4)	0.65 (0.56–0.76)	<0.0001
Removal of prior positives within 180 d (3,424 case-control subjects; 1,712 matched pairs)	Full	32	89	72.7 (56.4–82.9)	0.27 (0.17–0.44)	<0.0001
	Age	1,871	1,871		1.00 (0.99–1.00)	0.236
	Vaccination status					
Removal of prior positives within 180 d (3,424 case-control subjects; 1,712 matched pairs)	Partial	394	524	35.4 (24.0–45.1)	0.65 (0.55–0.76)	<0.0001
	Full	25	70	71.7 (52.5–83.1)	0.28 (0.17–0.48)	<0.0001
	Age	1,712	1,712		1.00 (0.99–1.00)	0.121

*Vaccine effectiveness.

†Confidence intervals.

‡Odds ratio.

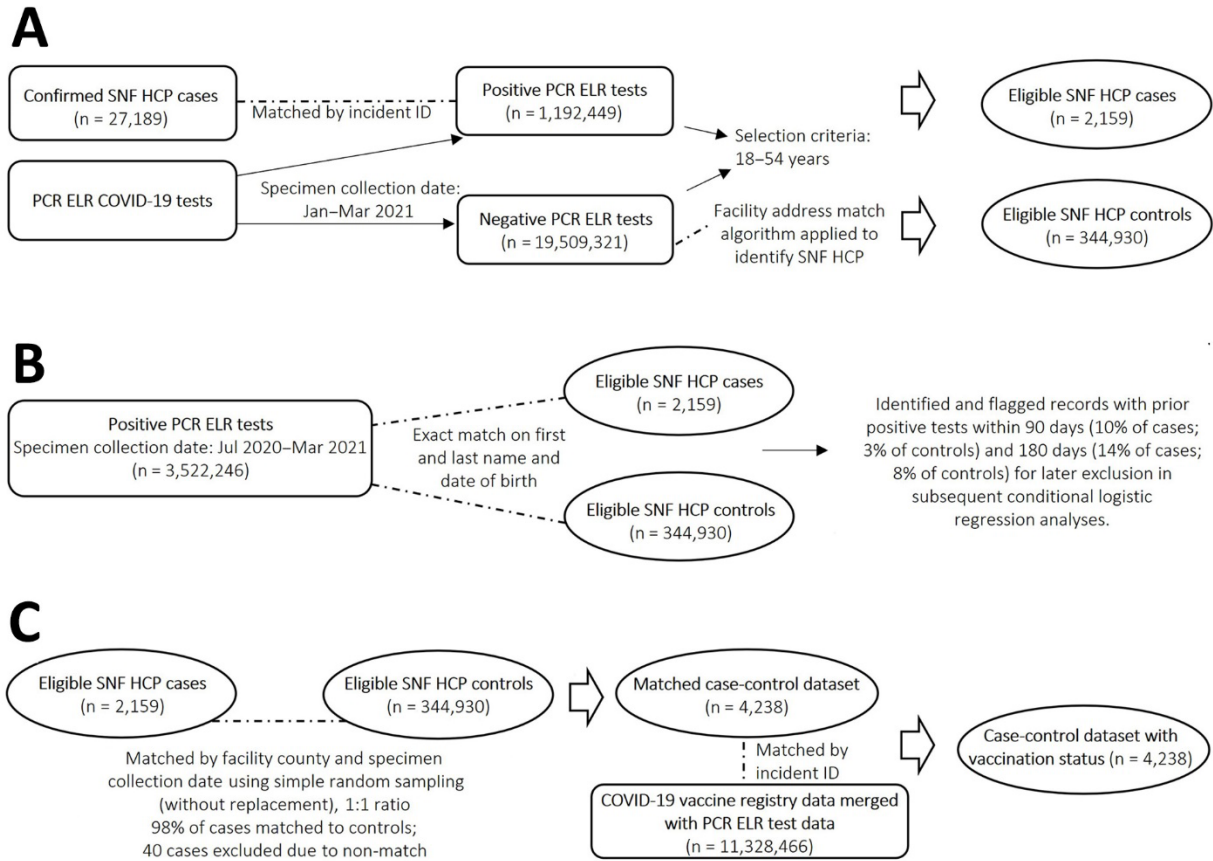
Appendix Table 5. Estimated COVID-19 vaccine effectiveness among California skilled nursing facility healthcare personnel, adjusted by sex based on reported data, January–March 2021

Models	Variables	No.		VE* and 95% CI† (%)	OR‡ and 95% Wald CI	p value
		Case-patients	Controls			
No removal of prior positives (3,422 case-control subjects; 1,711 matched pairs)	Vaccination status					
	Partial	387	512	36.0 (24.7–45.6)	0.64 (0.54–0.75)	<0.0001
	Full	36	91	70.5 (54.0–81.1)	0.30 (0.19–0.46)	<0.0001
	Sex					
Removal of prior positives within 90 d (3,062 case-control subjects; 1,531 matched pairs)	F	1,315	1,274		Reference	
	M	396	437		0.87 (0.74–1.02)	0.0822
	Vaccination status					
	Partial	361	466	33.9 (21.6–44.3)	0.66 (0.56–0.78)	<0.0001
Removal of prior positives within 180 d (2,798 case-control subjects; 1,399 matched pairs)	Full	32	86	72.2 (55.5–82.6)	0.28 (0.17–0.45)	<0.0001
	Sex					
	F	1,174	1,139		Reference	
	M	357	392		0.87 (0.74–1.03)	0.11
Removal of prior positives within 180 d (2,798 case-control subjects; 1,399 matched pairs)	Vaccination status					
	Partial	332	434	34.9 (22.2–45.5)	0.65 (0.55–0.78)	<0.0001
	Full	25	67	71.2 (51.7–82.8)	0.29 (0.17–0.48)	<0.0001
	Sex					
Removal of prior positives within 180 d (2,798 case-control subjects; 1,399 matched pairs)	F	1,074	1,035		Reference	
	M	325	364		0.85 (0.72–1.02)	0.0774

*Vaccine effectiveness.

†Confidence intervals.

‡Odds ratio.



Appendix Figure. Flow diagram summarizing main data process and methods for identification of skilled nursing facility (SNF) healthcare personnel (HCP) for inclusion in COVID-19 vaccine effectiveness study in California, January–March 2021. A) Data processing and identification of eligible SNF HCP COVID-19 cases and controls; B) Identification of previous COVID-19 positive test results in eligible cases and controls; C) Case-control selection and vaccination match. COVID-19, coronavirus disease; PCR, polymerase chain reaction. ELR, electronic laboratory reporting. IncidentID, California Reportable Disease Information Exchange (CaREDIE) disease incident identification number associated with the laboratory report ID. Dashed lines indicate that a match occurred.