

Economic Burden of Reported Lyme Disease in High-Incidence Areas, United States, 2014–2016

Sarah A. Hook, Seonghye Jeon, Sara A. Niesobecki, AmberJean P. Hansen, James I. Meek, Jenna K.H. Bjork, Franny M. Dorr, Heather J. Rutz, Katherine A. Feldman, Jennifer L. White, P. Bryon Backenson, Manjunath B. Shankar, Martin I. Meltzer, Alison F. Hinckley

Approximately 476,000 cases of Lyme disease are diagnosed in the United States annually, yet comprehensive economic evaluations are lacking. In a prospective study among reported cases in Lyme disease–endemic states, we estimated the total patient cost and total societal cost of the disease. In addition, we evaluated disease and demographic factors associated with total societal cost. Participants had a mean patient cost of ≈\$1,200 (median \$240) and a mean societal cost of ≈\$2,000 (median \$700). Patients with confirmed disseminated disease or probable disease had approximately double the societal cost of those with confirmed localized disease. The annual, aggregate cost of diagnosed Lyme disease could be \$345–968 million (2016 US dollars) to US society. Our findings emphasize the importance of effective prevention and early diagnosis to reduce illness and associated costs. These results can be used in cost-effectiveness analyses of current and future prevention methods, such as a vaccine.

Lyme disease is a bacterial illness caused primarily by infection with *Borrelia burgdorferi*, transmitted by the bite of infected *Ixodes scapularis* and *I. pacificus* ticks in the United States. Early symptoms can include a rash known as erythema migrans and influenza-like symptoms (1). Disseminated infection

can cause neurologic, musculoskeletal, and cardiac complications; in rare cases, cardiac involvement can be fatal (1–4). Most patients will experience a full recovery after antibiotic treatment, although a minority may continue to experience symptoms related to disease sequelae (1).

Lyme disease case numbers consistently rank in the top 10 among all nationally notifiable conditions, and it is the most commonly reported vector-borne disease in the United States (4,5). Annually, >30,000 cases are reported to the Centers for Disease Control and Prevention (4), but recent studies have demonstrated that the annual number of diagnosed cases is ≈476,000 (6). This figure represents a substantial disease burden, but the total economic cost to US society is unknown (7).

Economic evaluations for Lyme disease have limitations (7). Most studies report direct medical costs but lack data on nonmedical costs and losses in productivity (8–11). Several studies were conducted >2 decades ago in a few Maryland counties where Lyme disease was emerging (9,11,12); however, this limited scope prevents generalizability to other areas in which the disease is endemic, and results might not be representative of today's costs because of changes in disease management and healthcare structures. More recent studies have used diagnosis codes (e.g., International Classification of Diseases, 9th Revision, Clinical Modification) to identify Lyme disease patients from insurance claims databases. However, the low sensitivity and specificity of these codes in identifying actual cases (13,14) might lead to incorrect estimates of direct medical costs attributable to the disease. The few studies that provide more comprehensive cost estimates of Lyme disease were conducted in Europe under healthcare systems with financing structures different from those of the United States (15–17). As such, updated estimates of the total

Author affiliations: Centers for Disease Control and Prevention, Fort Collins, Colorado, USA (S.A. Hook, A.F. Hinckley); Centers for Disease Control and Prevention, Atlanta, Georgia, USA (S. Jeon, M.B. Shankar, M.I. Meltzer); Connecticut Emerging Infections Program, Yale School of Public Health, New Haven, Connecticut, USA (S.A. Niesobecki, A.P. Hansen, J.I. Meek); Minnesota Department of Health, St. Paul, Minnesota, USA (J.K.H. Bjork, F.M. Dorr); Maryland Department of Health, Baltimore, Maryland, USA (H.J. Rutz, K.A. Feldman); New York State Department of Health, Albany, New York, USA (J.L. White, P.B. Backenson)

DOI: <https://doi.org/10.3201/eid2806.211335>

societal cost of Lyme disease, including direct and indirect costs, are needed in the United States (7).

We aimed to address current research gaps by conducting a prospective cost-of-illness study to estimate the economic burden of reported Lyme disease in high-incidence areas of the United States. The main objectives of this study were to estimate the patient cost and the societal cost per participant. The secondary objective was to evaluate the association of select disease and demographic factors with the societal cost per participant. Results can be used by public health officials and communities to assess the cost-effectiveness of interventions to reduce the incidence of Lyme disease.

Methods

Study Design

This study was conducted as part of TickNET, a public health network of researchers who collaborate on tickborne disease research and surveillance (18). We conducted a prospective cost-of-illness study to estimate total costs per patient caused by Lyme disease in 4 high-incidence states: Connecticut, Maryland, Minnesota, and New York. We used an incidence-based design, measuring the cost of illness from onset to conclusion (19,20). We analyzed these costs from the patient perspective (i.e., costs incurred by the patient) and the societal perspective (i.e., costs incurred by the patient, healthcare system, or third-party payer) (21,22). Cost categories included direct medical costs (clinician visits, procedures, diagnostic testing, therapy, hospitalization, emergency department visits, or other relevant costs); direct non-medical costs (roundtrip travel costs for healthcare visits and amount paid for assistance with self-care, dependent care, or house or yard maintenance because of Lyme disease); and indirect costs, which are the cost of productivity losses (time taken off work or school because of symptoms or healthcare visits) (Appendix Table 1, <https://wwwnc.cdc.gov/EID/article/28/6/21-1335-App1.pdf>) (23). Henceforth, we will refer to direct medical costs as either patient medical costs (for medical costs borne by the patient) or societal medical costs (for total medical costs borne by the patient, healthcare system, and third-party payer); in addition, we will refer to direct nonmedical costs as nonmedical costs.

Study Population

The source population included pediatric and adult patients with clinician-diagnosed Lyme disease reported to public health surveillance authorities in

Connecticut and Minnesota and in select counties in Maryland and New York (Appendix Table 2). Eligible patients met the national surveillance case definition for confirmed or probable disease during the study period and were referred by surveillance authorities to study personnel upon case classification (24). To ensure enrollment of incident cases only, we excluded the following cases: probable cases with no symptoms reported by the clinician, cases with a previous Lyme disease diagnosis within 2 calendar years of current diagnosis date, and cases with a diagnosis date >12 months before date of enrollment. Non-English-speaking patients were not enrolled because of limited resources for interpreters.

We classified eligible patients into 3 disease categories. Those with confirmed Lyme disease were divided into 2 groups: confirmed localized disease (i.e., those with erythema migrans) and confirmed disseminated disease (i.e., those with arthritis, lymphocytic meningitis, cranial neuritis or facial palsy, radiculoneuropathy, encephalomyelitis, or second- or third-degree heart block) (24). The third category included probable cases with symptoms reported by a clinician. To ensure enrollment of participants with a range of disease severity, we stratified recruitment by disease category and, using quota sampling, aimed to recruit approximately equal numbers of participants in each category each month. This strategy also enabled us to enroll participants as close to their diagnosis date as possible to reduce participant recall error regarding costs. Each state aimed to enroll a minimum of 50 participants per disease category; the overall minimum enrollment goal was 150 total participants per state. Recruitment and enrollment occurred during September 2014–January 2016.

Data Collection

Participants consented to data collection for either patient costs or societal costs. Study coordinators conducted introductory telephone-based surveys with participants (or legal guardians for pediatric participants) to collect data on age, sex, annual household income, insurance coverage, and disease onset date. Patient cost data were collected at the introductory survey and then approximately monthly by using the IBM SPSS Data Collection Web Interviews survey program (IBM, <https://www.ibm.com>). We collected the following data on all surveys: dates for Lyme disease-related healthcare visits, clinician contact information, patient medical costs, nonmedical costs, and productivity losses. Surveys ceased when participants reported no Lyme disease-related expenses

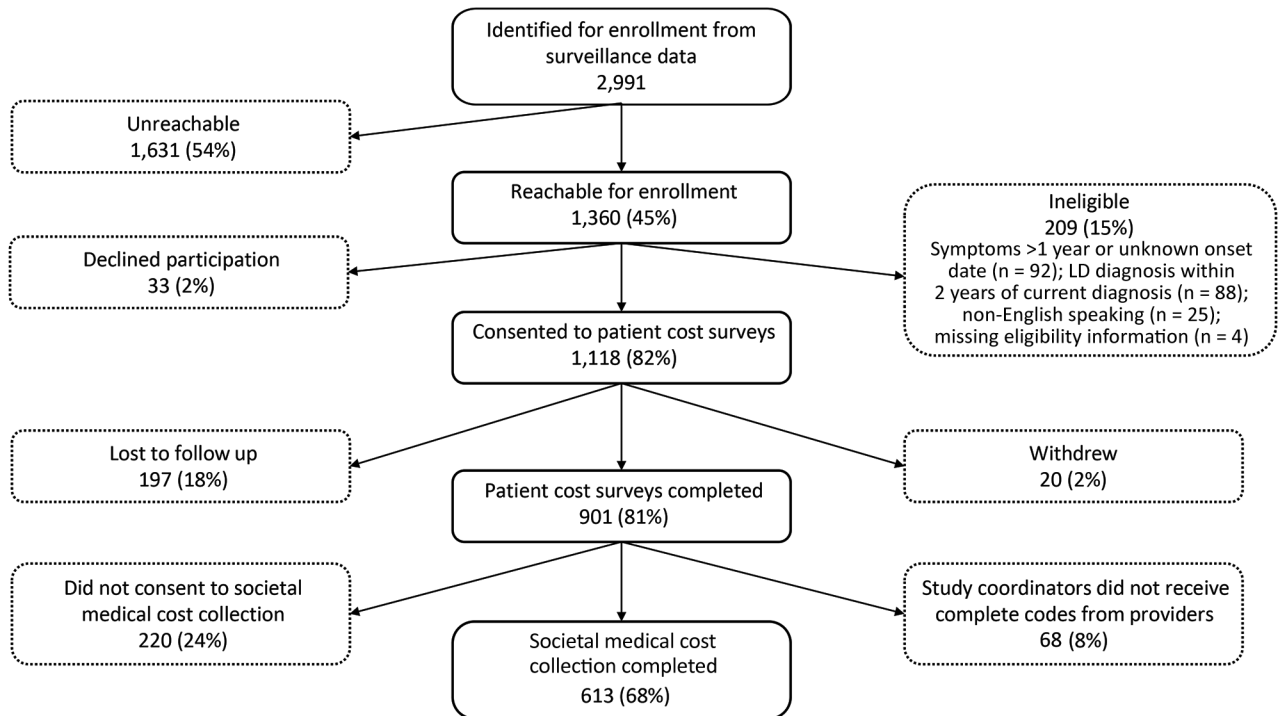


Figure 1. Flowchart of enrollment and completion by participants in study of economic burden of reported Lyme disease in high-incidence areas, United States, 2014–2016. LD, Lyme disease.

for 2 consecutive surveys or when they completed the maximum of 12 surveys.

To calculate societal medical costs, we requested billing codes (i.e., Current Procedural Terminology [CPT], 4th Edition) directly from participants' clinicians. We requested codes from 1 month before the self-reported disease onset date to the date of the final survey. We used a date range instead of individual visit dates reported by the participant in the event participants had incorrectly reported dates. We extracted mean reimbursement for each CPT code collected for participants with private insurance from IBM MarketScan Research Databases (IBM), which include national medical claims data for privately insured persons ≤ 65 years of age and their dependents, and reimbursements for CPT codes collected for nonprivately insured participants from the Physician Fee Schedule from the Centers for Medicare and Medicaid Services (25). We extracted the costs of reimbursements according to state, year, and inpatient versus outpatient status (Appendix).

Analysis

To provide an overall weighted mean and median set of reimbursements and costs, disease category sampling probabilities were estimated from disease category proportions derived from surveillance data

(4) to approximate stratified random sampling. We then used the inverse of the sampling probabilities to weight the data for all analyses described. We excluded participants who did not complete 3 consecutive surveys from all analyses. We adjusted medical costs to 2016 US dollars by using the Consumer Price Index for medical care and the general Consumer Price Index for nonmedical costs and costs of productivity losses (26). We estimated the mean, median, 10th and 90th percentiles, and SDs of patient costs, societal medical costs, and total societal costs per participant. We used the Kruskal-Wallis rank-sum test to evaluate differences in cost among the 3 disease categories (confirmed localized, confirmed disseminated, probable).

To estimate the patient cost, we summed self-reported patient medical costs, nonmedical costs, and cost of productivity losses over all surveys per participant (Appendix). To calculate the societal medical costs, we summed the mean cost per CPT code collected for each participant (Appendix). Finally, we calculated the societal cost by summing the societal medical costs, patient nonmedical costs, and cost of productivity losses per participant.

We conducted multivariable linear regression analysis by using the weighted dataset to evaluate associations between the societal cost per participant and the following independent variables: disease

Table 1. Demographic characteristics of 901 participants in study of economic burden of reported Lyme disease in high-incidence areas, United States, 2014–2016

Characteristic	No. participants	Unweighted %	Weighted %
Disease category*			
Confirmed localized	402	44.6	54.5
Confirmed disseminated	238	26.4	21.2
Probable	261	29.0	24.2
Age group, y			
<18	259	28.7	28.4
18–45	145	16.1	16.1
46–65	326	36.2	36.1
>65	171	19.0	19.4
Sex			
F	385	42.7	43.1
M	516	57.3	56.9
Race			
Non-White	59	6.5	6.4
White	842	93.5	93.6
State			
Connecticut	225	25.0	23.7
Maryland	239	26.5	26.8
Minnesota	268	29.7	29.6
New York	169	18.8	20.0
Income†			
≤\$60,000	238	29.2	28.8
>\$60,000	576	70.8	71.2
Insurance			
Private	632	70.1	70.2
Other	269	29.9	29.8

*Disease categories were derived from the surveillance case definition for Lyme disease (24). Those with confirmed Lyme disease were divided into 2 groups: confirmed localized disease (i.e., those with erythema migrans) and confirmed disseminated disease (i.e., those with arthritis, lymphocytic meningitis, cranial neuritis or facial palsy, radiculoneuropathy, encephalomyelitis, or 2nd or 3rd degree heart block). Those classified as probable met the probable case definition, plus had ≥1 symptom reported by a clinician.

†Participants were not required to provide information on income; n = 814.

category (confirmed localized, confirmed disseminated, probable), age group (<18, 18–45, 46–65, >65 years of age), sex (male, female), and state (Connecticut, Maryland, Minnesota, New York). We controlled for insurance status (private or nonprivate insurance), income (<\$60,000 or ≥\$60,000, which was the approximate median household income for participating states in 2015) (27), and study year (2014, 2015, 2016). As is typical for healthcare cost data, the distribution of societal cost was highly skewed, resulting in heteroskedasticity of the residuals in the model (28). Therefore, we transformed societal cost per participant by using natural logarithms and conducted sampling-weighted least squares regression (Appendix).

We obtained research approval from institutional review boards at Centers for Disease Control and Prevention, Connecticut Department of Public Health, Maryland Department of Health, Minnesota Department of Health, New York State Department of

Health, and Yale University. We conducted analyses using SAS version 9.4 (SAS Institute, <https://www.sas.com>) and R version 3.5.2 (29–34).

Results

During the enrollment period, we identified 2,991 Lyme disease patients who were classified as having confirmed cases or probable cases with symptoms reported (Figure 1). Of the 1,360 (45%) patients we were able to contact, 1,118 (82%) consented to patient cost surveys; we included 901 (81%) participants with complete survey data in the patient cost analysis. Last, 613 (68%) of these participants also had complete societal medical cost data, and we included them in the societal cost analysis.

The study population included 402 (55%) confirmed localized, 238 (21%) confirmed disseminated, and 261 (24%) probable cases (Table 1). Overall, 36% of participants were 46–65 years of age, 57% were

Table 2. Clinician visits and duration of costs incurred, by Lyme disease category, in high-incidence areas, United States, 2014–2016

Characteristic	All	Lyme disease category		
		Confirmed localized	Confirmed disseminated	Probable
Median provider visits (range)	2 (1–47)	2 (1–25)	3 (1–45)	2 (1–47)
Median surveys* (range)	3 (1–12)	2 (1–12)	3 (1–12)	4 (1–12)

*Participants began taking surveys at study enrollment and continued at approximately 1-month intervals until they reported no Lyme disease–related expenses for 2 consecutive surveys or when they completed the maximum of 12 surveys. The following were collected on all surveys: dates for Lyme disease–related healthcare visits, clinician contact information, patient medical costs, nonmedical costs, and productivity losses.

Table 3. Patient perspective of cost of Lyme disease per participant, by disease category, in high-incidence areas, United States, 2014–2016

Disease category	No. participants	Patient perspective, cost per participant,* 2016 US dollars					
		Median	Mean	SD	10th percentile	90th percentile	Range
All†	901	244	1,252	2,972	29	3,139	0–30,628
Confirmed localized	402	170	1,070	4,164	27	2,535	1–26,686
Confirmed disseminated	238	358	1,692	7,323	32	4,116	2–30,628
Probable	261	315	1,277	4,629	34	3,987	0–18,833

*Cost per participant according to the patient perspective represents the sum of patient medical costs, nonmedical costs, cost of productivity losses, and other related costs as reported by each participant on all surveys.

†Estimates for the overall population use the sample-weighted data except the range.

men, and 94% were white. Most had income >\$60,000 (71%) and private health insurance (70%). Demographic distributions were similar for the 613 participants who completed both patient cost surveys and societal medical cost collection (Appendix Table 3).

Participants reported a median of 2 provider visits and completed a median of 3 surveys (Table 2). Those with confirmed disseminated disease had the highest number of provider visits, reflecting the highest healthcare use, whereas those with probable disease had the highest number of surveys completed, reflecting the longest duration of costs incurred. Forty (4%) participants were still reporting symptoms and 25 (3%) were still incurring costs at survey 12.

Overall, the patient cost per participant ranged from \$0.46 to \$30,628. The median cost was \$244 and the mean cost \$1,252, reflecting a highly positively skewed distribution (Table 3). Participants with confirmed disseminated Lyme disease had the highest median cost (\$358) and mean cost (\$1,692), followed by those with probable disease (median \$315 and mean \$1,277), then participants with confirmed localized disease (median \$170 and mean \$1,070).

We calculated the median and mean cost per component of the patient cost by disease category (Figure 2; Appendix Table 4). For all disease categories, productivity losses had the highest mean cost of all cost components: \$727 for those with confirmed disseminated disease, \$627 for those with probable disease, and \$540 for those with confirmed localized disease. However, the median cost of productivity losses for all disease categories was \$0. Medical bills had the next highest cost: a median of \$83 and a mean of \$628 for those with confirmed disseminated disease, a median of \$83 and a mean of \$389 for those with probable disease, and a median of \$42 and a mean of \$314 for those with confirmed localized disease. All other cost components for all disease categories had median costs <\$22 and mean costs <\$80.

We collected 9,679 CPT codes to estimate societal medical costs. The most common codes were for office visits (17%) and routine venipuncture (6%) (Appendix Table 6). Overall, the societal medical

cost per participant ranged from \$50 to \$121,869, for a median of \$478 and mean of \$1,333 (Table 4). Participants with confirmed disseminated disease had the highest median and mean societal medical cost (\$696 and \$2,537), followed by those with probable disease (\$612 and \$1,804), then confirmed localized disease (\$374 and \$668).

Overall, the societal cost of Lyme disease per participant ranged from \$54 to \$122,766; the median was \$690 and the mean \$2,032 (Table 5). Participants with confirmed disseminated disease had the highest median and mean societal cost (\$1,081 and \$3,251), followed by those with probable disease (\$940 and \$2,620), then confirmed localized disease (\$493 and \$1,307) (Appendix Table 7). Applying these per participant societal costs to estimates of the number of Lyme disease cases diagnosed each year (6), the aggregate cost to US society annually would be ≈\$345 million using median costs and ≈\$968 million using mean costs (2016 US dollars; Appendix Tables 9, 10).

In multivariable linear regression analysis, disease category, age, and state were associated with societal cost per participant (Table 6; Appendix Table 8). Costs for participants with confirmed disseminated disease were 120% higher than costs for participants with confirmed localized disease ($p<0.001$); participants with probable disease had costs that were 59% higher than for those with confirmed localized disease. Participants 18–45 and 46–65 years of age had costs that were 96% and 108% higher, respectively, than those <18 years of age ($p<0.001$); however, those >65 years of age did not have significantly different costs. Minnesota residents had 75% higher costs than did Connecticut residents, but Maryland and New York residents did not have significantly different costs from those for Connecticut residents.

Discussion

In this study, persons with confirmed or probable Lyme disease had an average patient cost of ≈\$1,200 (median cost ≈\$240) and an average societal cost of ≈\$2,000 (median cost ≈\$700). In stratified analyses by disease category, those with confirmed disseminated

or probable disease had double or more the societal cost per participant than those with confirmed localized disease, highlighting the importance of early and accurate diagnosis. Having disseminated or probable disease, being 18–65 years of age, and residing in Minnesota had the greatest effects on the societal cost of Lyme disease. Although median societal costs were typically \leq \$1,000 for all disease categories, mean costs were substantially higher, indicating that most patients have low costs, but some experience very high costs related to this disease. Similarly, the low median number of provider visits and hours of lost

productivity suggest that Lyme disease illness is manageable for most patients, but for a minority, it can be highly disruptive. Approximately 476,000 cases of Lyme disease are diagnosed each year in the United States, so the aggregate cost to society annually could be \$345–968 million (2016 US dollars). This substantial economic burden underscores the need for effective prevention methods, such as a vaccine.

Classification of a reported case as probable means a clinician has diagnosed Lyme disease in a patient and laboratory evidence of infection exists. However, any reported symptoms are typically

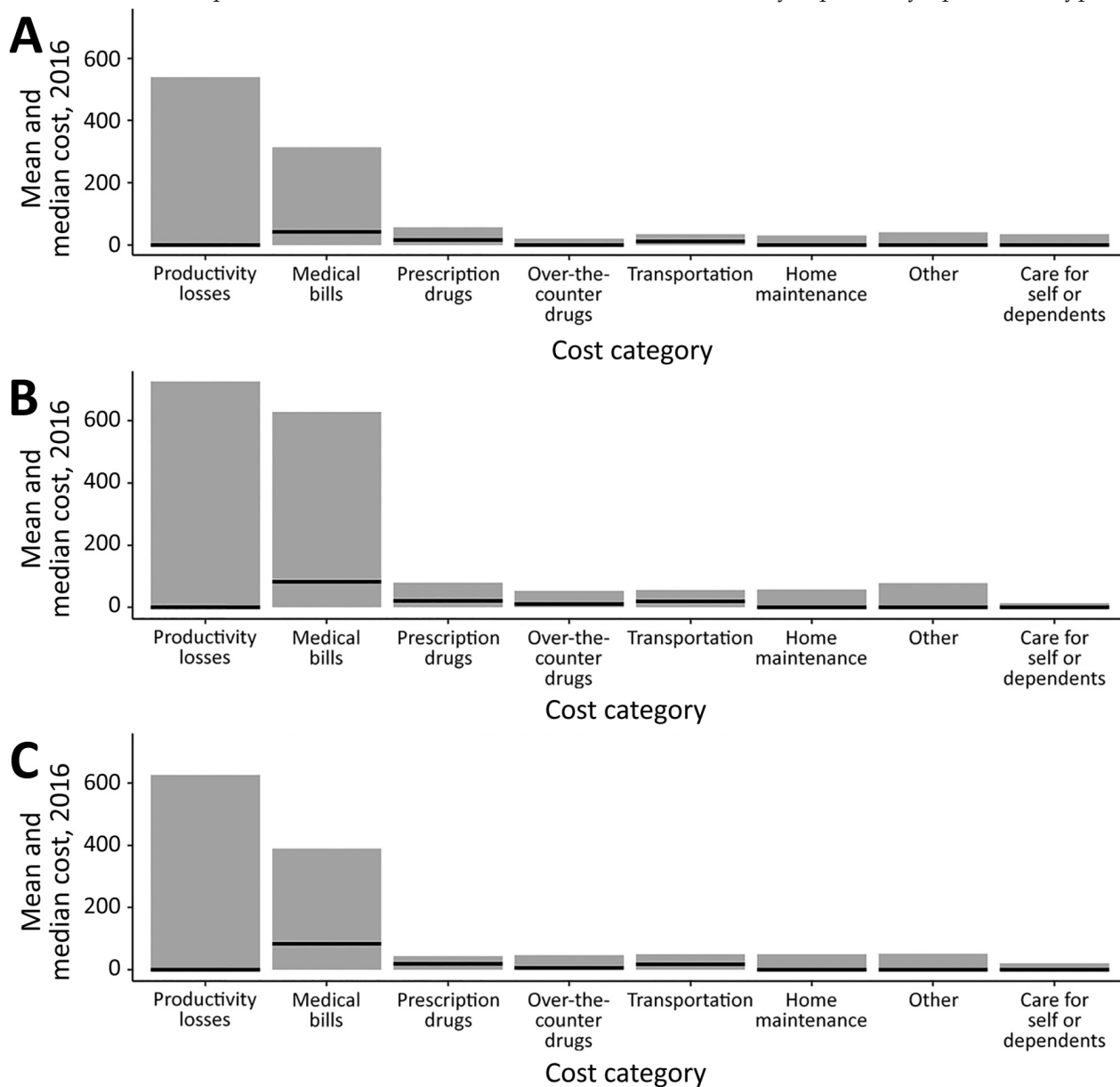


Figure 2. Mean and median cost per participant, by Lyme disease category and cost category of the total patient cost in high-incidence areas of the United States, 2014–2016. A) Confirmed localized disease; B) confirmed disseminated disease; C) probable disease. Black lines indicate median cost.

Table 4. Societal perspective of medical cost of Lyme disease per participant, by disease category, in high-incidence areas, United States, 2014–2016

Disease category	No. participants	Societal perspective, medical cost per participant,* 2016 US dollars					
		Median	Mean	SD	10th percentile	90th percentile	Range
All†	613	478	1,333	5,690	164	1,932	50–121,869
Confirmed localized	273	374	668	1,715	136	1,224	50–13,050
Confirmed disseminated	154	696	2,537	20,220	259	4,366	147–121,869
Probable	186	612	1,804	15,188	237	2,454	124–105,494

*Societal medical cost per participant excludes Current Procedural Terminology (CPT) codes deemed unrelated to Lyme disease as determined by a physician subject matter expert (Appendix Table 5, <https://wwwnc.cdc.gov/EID/article/28/6/21-1335-App1.pdf>).

†Estimates for the overall population use the sample-weighted data except the range.

nonspecific and do not meet clinical criteria for a confirmed case (24). Further, laboratory evidence of infection includes single-tier IgG immunoblot seropositivity, which might indicate past, rather than current, infection. As such, the increased costs for probable cases might result from higher healthcare use for disease unrelated to Lyme disease, which highlights the need for improvements in Lyme disease diagnosis and clinician education.

In a geographically limited study of Lyme disease patients residing on the eastern shore of Maryland during 1998–2001, Zhang et al. (9) reported mean total costs of \$3,494 and median total costs of \$500 (2016 US dollars) per patient attributable to this disease. However, their case definition differed from ours in its inclusion of patients with early, late, and suspected disease, as well as those with tick bite and other related complaints, as identified using diagnosis codes in medical records. Therefore, these figures might not be directly comparable to our mean and median societal costs (\$2,032 and \$690). Zhang et al. reported mean and median total costs of \$2,275 and \$689 (2016 US dollars) for participants with clinically defined early disease, which are higher than what we found for confirmed localized disease (mean \$1,307 and median \$493). However, in regression analyses, Zhang et al. found that disease category and age, but not sex, were significantly associated with societal medical costs, similar to our findings for societal cost. In another US study using nationwide commercial insurance claims data to compare cases with matched controls during 2006–2010, Adrion et al. (8) estimated an

increase of \$3,009 (2016 US dollars) in societal medical costs attributable to Lyme disease over a 12-month period. That cost is higher than our overall mean societal medical cost (\$1,333), likely because of study population differences, but is similar to that found for our participants with confirmed disseminated disease (\$2,537). In a recent study in the Netherlands, Van den Wijngaard et al. (17) used a societal perspective to estimate a total cost of \$137 for patients with erythema migrans only and \$6,398 (2016 US dollars) for those with disseminated Lyme borreliosis. These costs are lower than those for our societal results for confirmed localized disease (\$1,307) and higher than those for our societal results for confirmed disseminated disease (\$3,251). These cost differences might result from different healthcare financing systems in the United States versus Europe or from variations in clinical manifestations resulting from infection with different *B. burgdorferi* sensu lato strains (15–17).

Our study adds to the scarce literature on the economic burden of Lyme disease and provides a comprehensive estimate of its costs to both the patient and society. In addition, our prospective collection of all patient costs, including nonmedical costs and productivity losses, enables more accurate and more comprehensive cost estimates compared with previous studies in the United States. Further, these results provide estimates of the cost savings per case averted, which can be used in cost-benefit analyses of prevention interventions, such as a potential vaccine.

The first limitation of our study is that our estimates might be affected by recall error, either by

Table 5. Societal perspective of total cost of Lyme disease per participant, by disease category, in high-incidence areas, United States, 2014–2016

Disease category	No. participants	Societal perspective, total cost per participant,* 2016 US dollars					
		Median	Mean	SD	10th percentile	90th percentile	Range
All†	613	690	2,032	6,091	203	4,201	54–122,766
Confirmed localized	273	493	1,307	3,559	154	2,678	54–18,322
Confirmed disseminated	154	1,081	3,251	20,908	297	6,238	216–122,766
Probable	186	940	2,620	15,533	316	5,021	130–105,500

*Total cost per participant according to the societal perspective includes societal medical costs, patient nonmedical costs, and cost of productivity losses. Patient medical costs were not added because they are already included in societal medical costs.

†Estimates for the overall population use the sample-weighted data except the range.

Table 6. Impact of disease category, age group, sex, and state on total societal cost of Lyme disease per participant, United States, 2014–2016 (n = 613)*

Variable	% Difference	Total cost difference, 2016 US dollars (95% CI)
Baseline cost†	NA	305 (206–451)
Lyme disease category		
Confirmed, localized	Referent	Referent
Confirmed, disseminated	120	367 (188–545)
Probable	59	181 (71–291)
Age group, y		
<18	Referent	Referent
18–45	96	293 (107–479)
46–65	108	331 (175–486)
>65	27	84 (–28 to 195)
Sex		
F	Referent	Referent
M	11	35 (–26 to 95)
State		
Connecticut	Referent	Referent
Maryland	0	0 (–76 to 76)
Minnesota	75	229 (114–345)
New York	–6	–19 (–119 to 82)

*Results from sample-weighted multivariable linear regression analysis. The model includes independent variables of interest (i.e., disease category, age group, sex, and state), while controlling for insurance status, income, and study year (Appendix, <https://wwwnc.cdc.gov/EID/article/28/6/21-1335-App1.pdf>). Adjusted R² = 0.19.

†Baseline cost represents a patient with confirmed localized Lyme disease, female, <18 years of age, residing in Connecticut, without private insurance, with income <\$60,000, in the study year of 2014.

participants or providers, although we attempted to mitigate such error by enrolling patients as close to disease onset as possible, by surveying them monthly to capture ongoing costs, and by requesting codes from providers for a date range instead of for individual visits. However, by requesting codes over a date range, some billing codes unrelated to Lyme disease (e.g., for other comorbidities) might have been included despite our excluding codes definitively unrelated to Lyme disease, potentially leading to overestimates. Information bias might have occurred in our measure of association between disease category and cost because those with milder disease might be more likely to forget some costs than those with more severe disease, with a potential bias away from null. In addition, although the use of quota sampling to recruit reported cases was necessary to enroll patients near disease onset, this nonprobability sampling method limits our ability to meet assumptions for calculating sampling error. Use of surveillance data to weight responses by disease category was intended to ensure representativeness by disease category. Nevertheless, in surveillance data, confirmed localized cases are likely underreported, resulting in confirmed disseminated cases representing an artificially large proportion of cases; therefore, our overall cost might be overestimated (35,36). Finally, this study did not include costs related to deaths from Lyme disease, because no enrolled participants died. Although very rare, death from Lyme carditis has been reported (2,3), and associated productivity losses would greatly increase cost estimates.

Our results reflect the costs of diagnosed cases meeting the Lyme disease surveillance case definition in high-incidence states (24); as such, these costs likely reflect that of actual infections. However, we were not able to evaluate whether our estimates accurately represent the cost of diagnosed but unreported Lyme disease, cases that reflect some proportion of overdiagnosis (6). Further, our results might not reflect costs in states with emerging or low incidence of Lyme disease. Therefore, our results for extrapolation of costs to an estimated ≈476,000 diagnosed cases nationally per year should be interpreted with caution. Last, our results do not include costs for suspected Lyme disease (e.g., consultation and prophylactic treatment for tick bite, negative diagnostic tests), undiagnosed disease, or nonacute disease (e.g., patients experiencing long-term symptoms). These costs would further increase the total economic burden attributable to Lyme disease. Future efforts should include cost-effectiveness analyses of current and future prevention methods, such as a vaccine, in addition to economic evaluations of unreported, suspected, and nonacute disease.

In conclusion, Lyme disease represents a substantial economic burden to individual patients and US society. The aggregate cost of diagnosed Lyme disease could be nearly \$1 billion annually, not including suspected, undiagnosed, or nonacute cases. These findings emphasize the importance of early and accurate diagnosis to reduce both illness and its associated personal and societal costs.

Acknowledgments

We thank Nadia Thomas, Shaylee Mehta, David Neitzel, Elizabeth Schiffman, Molly Peterson, Julie Ray, Jamie Sommer, Robert Heimer, Mark Lamias, Craig Mincic, and John Jones for their assistance in conducting this study; Brad Biggerstaff, Zach Weller, and Josh Keller for their statistical advice; and Paul Mead, Jennifer Peel, Jude Bayham, Sheryl Magzamen, and Brooke Anderson for their valuable insights during manuscript preparation.

This work was supported by the Centers for Disease Control and Prevention.

About the Author

Dr. Hook is an epidemiologist in the Bacterial Diseases Branch, Division of Vector-Borne Diseases, National Center for Emerging and Zoonotic Infectious Diseases, Centers for Disease Control and Prevention, Fort Collins, Colorado. Her primary research interests are the epidemiology and prevention of bacterial vector-borne infections.

References

1. Wormser GP, Dattwyler RJ, Shapiro ED, Halperin JJ, Steere AC, Klemmner MS, et al. The clinical assessment, treatment, and prevention of Lyme disease, human granulocytic anaplasmosis, and babesiosis: clinical practice guidelines by the Infectious Diseases Society of America. *Clin Infect Dis*. 2006;43:1089–134. <https://doi.org/10.1086/508667>
2. Forrester JD, Mead P. Third-degree heart block associated with Lyme carditis: review of published cases. *Clin Infect Dis*. 2014;59:996–1000. <https://doi.org/10.1093/cid/ciu411>
3. Forrester JD, Meiman J, Mullins J, Nelson R, Ertel SH, Cartter M, et al.; Centers for Disease Control and Prevention (CDC). Notes from the field: update on Lyme carditis, groups at high risk, and frequency of associated sudden cardiac death—United States. *MMWR Morb Mortal Wkly Rep*. 2014;63:982–3.
4. Schwartz AM, Hinckley AF, Mead PS, Hook SA, Kugeler KJ. Surveillance for Lyme disease—United States, 2008–2015. *MMWR Surveill Summ*. 2017;66:1–12. <https://doi.org/10.15585/mmwr.ss6622a1>
5. Rosenberg R, Lindsey NP, Fischer M, Gregory CJ, Hinckley AF, Mead PS, et al. Vital signs: trends in reported vectorborne disease cases—United States and territories, 2004–2016. *MMWR Morb Mortal Wkly Rep*. 2018;67:496–501. <https://doi.org/10.15585/mmwr.mm6717e1>
6. Kugeler KJ, Schwartz AM, Delorey MJ, Mead PS, Hinckley AF. Estimating the frequency of Lyme disease diagnoses, United States, 2010–2018. *Emerg Infect Dis*. 2021;27:616–9. <https://doi.org/10.3201/eid2702.202731>
7. Mac S, da Silva SR, Sander B. The economic burden of Lyme disease and the cost-effectiveness of Lyme disease interventions: a scoping review. *PLoS One*. 2019;14:e0210280. <https://doi.org/10.1371/journal.pone.0210280>
8. Adrion ER, Aucott J, Lemke KW, Weiner JP. Health care costs, utilization and patterns of care following Lyme disease. *PLoS One*. 2015;10:e0116767. <https://doi.org/10.1371/journal.pone.0116767>
9. Zhang X, Meltzer MI, Peña CA, Hopkins AB, Wroth L, Fix AD. Economic impact of Lyme disease. *Emerg Infect Dis*. 2006;12:653–60. <https://doi.org/10.3201/eid1204.050602>
10. Strickland GT, Karp AC, Mathews A, Peña CA. Utilization and cost of serologic tests for Lyme disease in Maryland. *J Infect Dis*. 1997;176:819–21. <https://doi.org/10.1086/517311>
11. Fix AD, Strickland GT, Grant J. Tick bites and Lyme disease in an endemic setting: problematic use of serologic testing and prophylactic antibiotic therapy. *JAMA*. 1998;279:206–10. <https://doi.org/10.1001/jama.279.3.206>
12. Strickland GT, Caisley I, Woubeshet M, Israel E. Antibiotic therapy for Lyme disease in Maryland. *Public Health Rep*. 1994;109:745–9.
13. Rutz H, Hogan B, Hook S, Hinckley A, Feldman K. Exploring an alternative approach to Lyme disease surveillance in Maryland. *Zoonoses Public Health*. 2018;65:254–9. <https://doi.org/10.1111/zph.12446>
14. White J, Noonan-Toly C, Lukacik G, Thomas N, Hinckley A, Hook S, et al. Lyme disease surveillance in New York state: an assessment of case underreporting. *Zoonoses Public Health*. 2018;65:238–46. <https://doi.org/10.1111/zph.12307>
15. Lohr B, Müller I, Mai M, Norris DE, Schöffski O, Hunfeld KP. Epidemiology and cost of hospital care for Lyme borreliosis in Germany: lessons from a health care utilization database analysis. *Ticks Tick Borne Dis*. 2015;6:56–62. <https://doi.org/10.1016/j.ttbdis.2014.09.004>
16. Joss AW, Davidson MM, Ho-Yen DO, Ludbrook A. Lyme disease—what is the cost for Scotland? *Public Health*. 2003;117:264–73. [https://doi.org/10.1016/S0033-3506\(03\)00067-2](https://doi.org/10.1016/S0033-3506(03)00067-2)
17. van den Wijngaard CC, Hofhuis A, Wong A, Harms MG, de Wit GA, Lugner AK, et al. The cost of Lyme borreliosis. *Eur J Public Health*. 2017;27:538–47. <https://doi.org/10.1093/eurpub/ckw269>
18. Mead P, Hinckley A, Hook S, Beard CB. TickNET—a collaborative public health approach to tickborne disease surveillance and research. *Emerg Infect Dis*. 2015;21:1574–7. <https://doi.org/10.3201/eid2109.150301>
19. Jo C. Cost-of-illness studies: concepts, scopes, and methods. *Clin Mol Hepatol*. 2014;20:327–37. <https://doi.org/10.3350/cmh.2014.20.4.327>
20. Tarricone R. Cost-of-illness analysis. What room in health economics? *Health Policy*. 2006;77:51–63. <https://doi.org/10.1016/j.healthpol.2005.07.016>
21. Rice DP. Cost of illness studies: what is good about them? *Inj Prev*. 2000;6:177–9. <https://doi.org/10.1136/ip.6.3.177>
22. Rice DP. Estimating the cost of illness. *Am J Public Health Nations Health*. 1967;57:424–40. <https://doi.org/10.2105/AJPH.57.3.424>
23. Meltzer MI. Introduction to health economics for physicians. *Lancet*. 2001;358:993–8. [https://doi.org/10.1016/S0140-6736\(01\)06107-4](https://doi.org/10.1016/S0140-6736(01)06107-4)
24. Centers for Disease Control and Prevention. Lyme disease (*Borrelia burgdorferi*) 2008 case definition. 2008 [cited 2019 Oct 18]. <https://wwwn.cdc.gov/nndss/conditions/lyme-disease/case-definition/2008>
25. Centers for Medicare and Medicaid. PFS national payment amount file. 2019 [cited 2019 Nov 6]. <https://www.cms.gov/Medicare/Medicare-Fee-for-Service-Payment/PhysicianFeeSched/PFS-National-Payment-Amount-File.html>
26. US Bureau of Labor Statistics. Historical consumer price index for all urban consumers (CPI-U) [cited 2019 Jun 27]. <https://www.bls.gov/cpi/tables/supplemental-files/historical-cpi-u-201812.pdf>
27. Posey KG. Household Income: 2015. 2016 [cited 2022 Feb 1]. <https://www.census.gov/content/dam/Census/library/publications/2016/acs/acsbr15-02.pdf>
28. Mihaylova B, Briggs A, O'Hagan A, Thompson SG. Review of statistical methods for analysing healthcare resources and

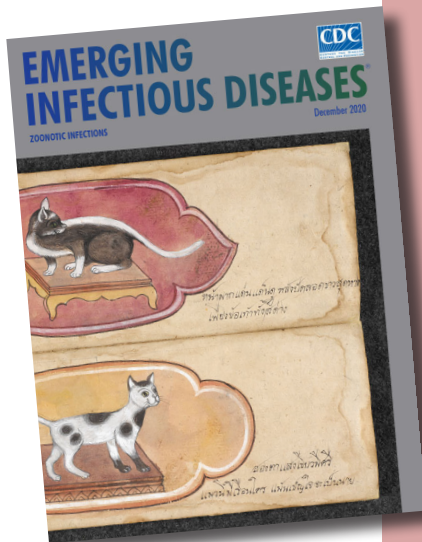
- costs. *Health Econ.* 2011;20:897–916. <https://doi.org/10.1002/hec.1653>
29. Wickham H. tidyverse: easily install and load the ‘Tidyverse.’ R package version 1.2.1 ed; 2017 [cited 2022 May 3]. <https://cran.r-project.org/web/packages/tidyverse/index.html>
 30. Freedman GE. srvyr: ‘dplyr’-like syntax for summary statistics of survey data. R package version 0.3.4 ed; 2019 [cited 2022 May 3]. <https://cran.r-project.org/web/packages/srvyr/index.html>
 31. Lumley T. Survey: analysis of complex survey samples R package version 3.35-1 ed; 2019 [cited 2022 May 3]. <https://cran.r-project.org/web/packages/survey/index.html>
 32. Long J. jtools: Analysis and presentation of social scientific data. R package version 2.0.1 ed; 2019 [cited 2022 May 3]. <https://cran.r-project.org/web/packages/jtools/index.html>
 33. Wei T, Simko V. R package “corrplot”: visualization of a correlation matrix (version 0.84). Version 0.84 ed; 2017 [cited 2022 May 3]. <https://www.rdocumentation.org/packages/corrplot/versions/0.84>
 34. Fox J, Weisberg S. An {R} companion to applied regression, 2nd edition. Thousand Oaks (CA): Sage Publishing; 2011.
 35. Naleway AL, Belongia EA, Kazmierczak JJ, Greenlee RT, Davis JP. Lyme disease incidence in Wisconsin: a comparison of state-reported rates and rates from a population-based cohort. *Am J Epidemiol.* 2002;155:1120–7. <https://doi.org/10.1093/aje/155.12.1120>
 36. Cartter ML, Lynfield R, Feldman KA, Hook SA, Hinckley AF. Lyme disease surveillance in the United States: looking for ways to cut the Gordian knot. *Zoonoses Public Health.* 2018;65:227–9. <https://doi.org/10.1111/zph.12448>

Address for correspondence: Sarah Hook, Centers for Disease Control and Prevention, 3156 Rampart Rd, Mailstop P02, Fort Collins, CO, 80521, USA; email: vhx8@cdc.gov

etymologia revisited

Salmonella

[sal''mo-nel'ə]



Originally published
in December 2020

https://wwwnc.cdc.gov/eid/article/26/12/et-2612_article

Named in honor of Daniel Elmer Salmon, an American veterinary pathologist, *Salmonella* is a genus of motile, gram-negative bacillus, nonspore-forming, aerobic to facultatively anaerobic bacteria of the family Enterobacteriaceae. In 1880, Karl Joseph Eberth was the first to observe *Salmonella* from specimens of patients with typhoid fever (from the Greek *typhōdes* [like smoke; delirious]), which was formerly called *Eberthella typhosa* in his tribute. In 1884, Georg Gaffky successfully isolated this bacillus (later described as *Salmonella Typhi*) from patients with typhoid fever, confirming Eberth’s findings. Shortly afterward, Salmon and his assistant Theobald Smith, an American bacteriologist, isolated *Salmonella Choleraesuis* from swine, incorrectly assuming that this germ was the causative agent of hog cholera. Later, Joseph Lignières, a French bacteriologist, proposed the genus name *Salmonella* in recognition of Salmon’s efforts.

Sources:

1. Dorland’s Illustrated Medical Dictionary. 32nd ed. Philadelphia: Elsevier Saunders; 2012.
2. Gossner CM, Le Hello S, de Jong B, Rolfhamre P, Faensen D, Weill FX, et al. Around the world in 1,475 *Salmonella* geo-serotypes [Another Dimension]. *Emerg Infect Dis.* 2016;22:1298–302.
3. Issenhuth-Jeanjean S, Roggentin P, Mikoleit M, Guibourdenche M, de Pinna E, Nair S, et al. Supplement 2008-2010 (no. 48) to the White-Kauffmann-Le Minor scheme. *Res Microbiol.* 2014;165:526–30.
4. Salmon DE. The discovery of the germ of swine-plague. *Science.* 1884;3:155–8.
5. Su LH, Chiu CH. *Salmonella*: clinical importance and evolution of nomenclature. *Chang Gung Med J.* 2007;30:210–9.

Economic Burden of Reported Lyme Disease in High-Incidence Areas, United States, 2014–2016

Appendix

Section 1. Detailed Description of Cost Calculations for Total Patient Cost (Patient Perspective) and Societal Medical Costs (Societal Perspective)

To estimate the total patient cost, we summed self-reported medical costs, nonmedical costs, cost of productivity losses, and other related costs over all surveys. For nonmedical costs related to travel for clinician, pharmacy, or laboratory visits, the self-reported roundtrip mileage per visit was multiplied by the standard mileage rate from the Internal Revenue Service for the respective year (1). To calculate cost estimates for productivity losses, self-reported hours missed from work for adult participants or parents of pediatric participants were multiplied by the hourly earnings by age and sex derived from Grosse et al. (2), which uses the human capital approach to estimate annual market and non-market productivity from the US Census Bureau's American Community Survey and American Time Use Survey.

We calculated the societal medical cost per participant (regardless of who pays) by summing the mean cost per CPT code collected for each participant. The codes represented clinician visits, consultation and related in-office procedures, diagnostic testing, therapy, hospitalization, emergency department (ED) visits, or other procedures or relevant costs. Mean cost for each CPT code collected for participants with private insurance was extracted from IBM MarketScan Research Databases, which include national medical claims data for privately insured persons up to age 65 and their dependents. Costs for CPT codes collected for non-privately insured participants were extracted from the Physician Fee Schedule National Payment Amount File from the Centers for Medicare and Medicaid Services (CMS) (3). Both MarketScan and CMS costs reflect reimbursements made for charges for medical procedures and services and include the amount paid by the insurer as well as the beneficiary (such as deductibles, copays,

and coinsurance). We did not collect billing codes from pharmacies or laboratories. Therefore, we extracted the mean cost of the recommended antibiotics for Lyme disease (LD) by state and study year from MarketScan drug cost data and added this cost to each participant's total societal medical cost (4–8). Because laboratory evidence of infection is required to meet criteria for confirmed disseminated or probable disease (9), we added the cost of the recommended two-tiered LD diagnostic testing to the total societal medical cost for all participants in these disease categories who did not already have these CPT codes documented. We excluded from analysis participants for whom CPT code collection was incomplete due to provider nonresponse to code collection requests. We also excluded individual CPT codes deemed unrelated to LD, per consultation with an infectious disease physician, that were collected coincidentally from providers (Appendix Table 5).

Equation 1. Multivariable Linear Regression Model Equation

We used a multivariable linear regression model to estimate the relative impact of our independent variables of interest on the total societal cost of LD per participant. As is typical for healthcare cost data, the distribution of total cost was highly skewed, resulting in heteroskedasticity of the residuals in the model (10). Therefore, we transformed total societal cost per participant using natural logarithms and conducted sampling-weighted least squares regression. The basic equation is as follows:

$$\log(y_i) = \beta_0 + \beta_i x_i + \varepsilon_i$$

where Y_i , is the dependent variable, the total societal cost of LD for patient i ; X_i is a vector of covariates; and ε_i is a mean-zero random error. The equation is written as follows for our specific vector of covariates (i.e., independent variables of interest and potential confounders):

$$\log(y_i) = \beta_0 + \beta_1 \text{Disease category} + \beta_2 \text{Age group} + \beta_3 \text{Sex} + \beta_4 \text{State} + \beta_5 \text{Insurance status} + \beta_6 \text{Income} + \beta_7 \text{Study year} + \varepsilon_i$$

Baseline costs came from the intercept term, β_0 , which represents a patient with confirmed localized Lyme disease, female, aged <18 years, with residence in CT, without private insurance, with income <\$60,000, and study year of 2014. Resulting β coefficients were back

transformed by exponentiation, interpreted as the multiplicative difference in the geometric mean of the total cost of Lyme disease for a 1-unit difference in the independent variable of interest after adjusting for confounders. For interpretability, we calculated the percent difference in cost from baseline for each level of each independent variable, excluding reference (i.e., baseline) levels (Percent difference = $(\text{Exp}(\text{coefficient}) - 1) * 100$). These additional costs were added or subtracted to the baseline costs for each independent variable of interest (Table 6, LINK; Appendix Table 8).

Section 2. Description of Calculations for Extrapolation of Total Societal LD Cost Per Participant to Annual, Aggregate Total LD Cost to U.S. Society

Previous research has demonstrated that LD surveillance case numbers are likely 8–12-fold underreported (11,12), with a recent study estimating 476,000 diagnosed cases per year (13). The table below shows total cases by confirmed localized, confirmed disseminated, and probable disease per the proportions found in surveillance data. Case numbers by disease category are multiplied by the mean and median total cost per participant estimated from this study to get the aggregate cost per disease category (Appendix Table 9). When summed, the mean total cost of LD in the U.S. annually is approximately \$968,444,834, while the median is \$345,164,936 (2016 USD, Appendix Table 10). In 2020 USD, the mean cost is \$1,039,260,297 using the Consumer Price Index (CPI) for all consumers and \$1,078,657,584 when using the CPI for medical care (14), with median costs at \$370,404,385 and \$384,446,034, respectively (Appendix Table 10).

References

1. Standard Mileage Rates IRS. 2019 [cited 2019 7/22/2019]; Available from: <https://www.irs.gov/tax-professionals/standard-mileage-rates>
2. Grosse SD, Krueger KV, Pike J. Estimated annual and lifetime labor productivity in the United States, 2016: implications for economic evaluations. *J Med Econ.* 2019;22:501–8. [PubMed](https://doi.org/10.1080/13696998.2018.1542520)
<https://doi.org/10.1080/13696998.2018.1542520>
3. Centers for Medicare and Medicaid. PFS National Payment Amount File. 2019 [cited 2019 Nov 6]. <https://www.cms.gov/Medicare/Medicare-Fee-for-Service-Payment/PhysicianFeeSched/PFS-National-Payment-Amount-File.html>

4. Hu LT. Lyme Disease. *Ann Intern Med.* 2016;165:677. [PubMed https://doi.org/10.7326/L16-0409](https://doi.org/10.7326/L16-0409)
5. Kowalski TJ, Tata S, Berth W, Mathiason MA, Agger WA. Antibiotic treatment duration and long-term outcomes of patients with early Lyme disease from a Lyme disease-hyperendemic area. *Clin Infect Dis.* 2010;50:512–20. [PubMed https://doi.org/10.1086/649920](https://doi.org/10.1086/649920)
6. Sanchez E, Vannier E, Wormser GP, Hu LT. Diagnosis, Treatment, and Prevention of Lyme Disease, Human Granulocytic Anaplasmosis, and Babesiosis: A Review. *JAMA.* 2016;315:1767–77. [PubMed https://doi.org/10.1001/jama.2016.2884](https://doi.org/10.1001/jama.2016.2884)
7. Stupica D, Lusa L, Ruzić-Sabljić E, Cerar T, Strle F. Treatment of erythema migrans with doxycycline for 10 days versus 15 days. *Clin Infect Dis.* 2012;55:343–50. [PubMed https://doi.org/10.1093/cid/cis402](https://doi.org/10.1093/cid/cis402)
8. Centers for Disease Control and Prevention. Lyme disease treatment. 2020 [cited 2020 Feb 13]. <https://www.cdc.gov/lyme/treatment/index.html>
9. Centers for Disease Control and Prevention. Lyme Disease (*Borrelia burgdorferi*) 2008 Case Definition. 2008 [cited 2019 Oct 18]. <https://wwwn.cdc.gov/nndss/conditions/lyme-disease/case-definition/2008/>
10. Mihaylova B, Briggs A, O’Hagan A, Thompson SG. Review of statistical methods for analysing healthcare resources and costs. *Health Econ.* 2011;20:897–916. [PubMed https://doi.org/10.1002/hec.1653](https://doi.org/10.1002/hec.1653)
11. Nelson CA, Saha S, Kugeler KJ, Delorey MJ, Shankar MB, Hinckley AF, et al. Incidence of clinician-diagnosed Lyme disease, United States, 2005–2010. *Emerg Infect Dis.* 2015;21:1625–31. [PubMed https://doi.org/10.3201/eid2109.150417](https://doi.org/10.3201/eid2109.150417)
12. Hinckley AF, Connally NP, Meek JI, Johnson BJ, Kemperman MM, Feldman KA, et al. Lyme disease testing by large commercial laboratories in the United States. *Clin Infect Dis.* 2014;59:676–81. [PubMed https://doi.org/10.1093/cid/ciu397](https://doi.org/10.1093/cid/ciu397)
13. Kugeler KJ, Schwartz AM, Delorey MJ, Mead PS, Hinckley AF. Estimating the frequency of Lyme Disease diagnoses, United States, 2010–2018. *Emerg Infect Dis.* 2021;27:616–9. [PubMed https://doi.org/10.3201/eid2702.202731](https://doi.org/10.3201/eid2702.202731)
14. U.S. Bureau of Labor Statistics. Databases, Tables & Calculators by Subject. 2020 [cited 2020 Sep 30]. <https://data.bls.gov/pdq/SurveyOutputServlet>
15. Meltzer MI. Introduction to health economics for physicians. *Lancet.* 2001;358:993–8. [PubMed https://doi.org/10.1016/S0140-6736\(01\)06107-4](https://doi.org/10.1016/S0140-6736(01)06107-4)

Appendix Table 1. Cost categories and inclusion of costs dependent on perspective for economic analysis*

Cost categories	Examples of costs	Perspective†	
		Patient	Society‡
Direct medical	Healthcare personnel time	Included	Included
	Drugs or other therapy	Included	Included
	Laboratory tests	Included	Included
	Medical devices, supplies, equipment	Not included	Included
Direct nonmedical	Administrative resources	Not included	Included
	Healthcare facility	Not included	Included
	Utilities	Not included	Included
	Patient's travel cost	Included	Included
	Hired caregiving	Included	Included
	Hired household help	Included	Included
Indirect	Time off work for healthcare visits	Included	Included
	Time off work due to symptoms	Included	Included

*Source: adapted from Meltzer MI (15).

†Economic analyses are usually conducted from the following perspectives: patient, clinician, hospital, third-party payer, and/or society.

‡The societal perspective includes all costs related to an illness, no matter who pays, and is typically the sum of costs paid by the patient, clinician, hospital, and third-party payer.

Appendix Table 2. Participating counties from Maryland and New York

State	County	
Maryland	Anne Arundel	
	Baltimore	
	Calvert	
	Carroll	
	Cecil	
	Frederick	
	Harford	
	Howard	
	Montgomery	
	New York	Albany
		Rensselaer
Columbia		
Greene		
Saratoga		
Schoharie		
Schnectady		
Washington		
Fulton		
Montgomery		
Ostego		
Delaware		
Dutchess		
Ulster		

Appendix Table 3. Characteristics of the subset of participants with complete patient cost and societal medical cost data, n = 613

Characteristic	Category	No.	Unweighted %	Weighted %
Disease category	Confirmed localized	273	44.5	54.4
	Confirmed disseminated	154	25.1	20.2
	Probable	186	30.3	25.4
Age group, y	<18	173	28.2	27.7
	18–45	96	15.7	15.7
	46–65	228	37.2	37
	>65	116	18.9	19.5
Sex	Female	262	42.7	43.0
	Male	351	57.3	57.0
Race	Non-White	45	7.3	7.1
	White	568	92.7	92.9
State	CT	128	20.9	19.3
	MD	203	33.1	33.6
	MN	191	31.2	31.1
	NY	91	14.8	15.9
Income*	≤\$60,000	160	28.7	28.4
	>\$60,000	398	71.3	71.6
Insurance	Private	438	28.5	28.5
	Other	175	71.5	71.5
Median clinician visits (range)		2 (1–33)	NA	NA
Median surveys (range)		3 (1–12)	NA	NA

*Participants were not required to provide information on income; n = 558.

Appendix Table 4. Mean and median patient Lyme disease costs per participant, by disease and cost category, 2016 US dollars*

Cost category	Confirmed localized disease		Confirmed disseminated disease		Probable disease	
	Median (95% CI)	Mean (95% CI)	Median (95% CI)	Mean (95% CI)	Median (95% CI)	Mean (95% CI)
Productivity losses	0 (0–0)	540 (368–712)	0 (0–0)	727 (359–1095)	0 (0–0)	627 (429–824)
Medical bills	42 (31–52)	314 (201–426)	83 (61–145)	628 (408–848)	83 (62–99)	389 (264–514)
Prescription medicine	16 (11–21)	56 (32–80)	21 (17–21)	79 (54–105)	19 (16–21)	44 (34–54)
Over-the-counter medicine	0 (0–4)	20 (13–27)	10 (7–10)	53 (28–78)	5 (2–8)	47 (21–72)
Transportation	11 (10–12)	34 (16–52)	20 (17–23)	55 (37–74)	18 (14–20)	49 (30–69)
Home maintenance	0 (0–0)	31 (7–55)	0 (0–0)	58 (12–103)	0 (0–0)	50 (4–97)
Other	0 (0–0)	40 (23–58)	0 (0–0)	78 (37–118)	0 (0–0)	51 (27–75)
Care for self/dependents	0 (0–0)	35 (0–91)	0 (0–0)	14 (0–28)	0 (0–0)	20 (0–42)

Appendix Table 5. List of CPT codes removed from analyses, code description, frequency, mean cost per code (n = 30)*

CPT code	Code description	N	Mean cost (2016 USD)
11406	Removal of growth (4.0 cm) of the trunk, arms, or legs	1	1152
11606	Removal of malignant growth (over 4.0 cm) of the trunk, arms, or legs	1	1240
36475	Destruction of insufficient vein of arm or leg, accessed through the skin	1	3021
37609	Tying or biopsy of temporal artery (side of skull)	1	1844
42821	Removal of tonsils and adenoid glands patient age 12 or over	1	1946
42830	Removal of adenoids patient younger than age 12	1	1854
43238	Ultrasound guided needle aspiration or biopsies of esophagus using an endoscope	1	1664
45378	Diagnostic examination of large bowel using an endoscope	4	752
45380	Biopsy of large bowel using an endoscope	1	1131
45385	Removal of polyps or growths of large bowel using an endoscope	2	2911
47562	Removal of gallbladder using an endoscope	1	4062
55700	Biopsy of prostate gland	1	679
59510	Cesarean delivery with pre- and post-delivery care	1	2893
62311	Injections of substances into lower or sacral spine	3	565
64490	Injections of upper or middle spine facet joint using imaging guidance	1	788
64491	Injections of upper or middle spine facet joint using imaging guidance	1	531
64492	Injections of upper or middle spine facet joint using imaging guidance	1	502
64635	Destruction of lower or sacral spinal facet joint nerves using imaging guidance	1	1155
64636	Destruction of lower or sacral spinal facet joint nerves with imaging guidance	1	801
66984	Removal of cataract with insertion of lens	3	2415
69436	Incision of eardrum with insertion of eardrum tube under general anesthesia	1	1802
78582	Lung ventilation and perfusion imaging	1	598
92928	Catheter insertion of stents in major coronary artery or branch, accessed through the skin	1	3530

CPT code	Code description	N	Mean cost (2016 USD)
95810	Sleep monitoring of patient (6 y or older) in sleep lab	1	1535
C1725	Catheter, transluminal angioplasty, non-laser (may include guidance, infusion/perfusion capability)	2	2182
C1874	Stent, coated/covered, with delivery system	1	5411
C9600	Percutaneous transcatheter placement of drug eluting intracoronary stent(s), with coronary angioplasty when performed; single major coronary artery or branch	1	12616
G0202	Screening mammography digital	14	490
G0206	Diagnostic mammography digital	3	523
J0133	Injection, acyclovir, 5 mg	1	824

*An infectious disease physician with subject matter expertise in Lyme disease deemed these CPT codes to be unrelated to Lyme disease; 54 instances with these 30 codes recorded were deleted from the dataset before all analyses.

Appendix Table 6. Twenty-five most frequently reported CPT codes, code description, and summary statistics

CPT code	Code description	N	Proportion	MarketScan mean, median reimbursement (USD 2016)	CMS mean, median reimbursement (USD 2016)
99213	Established office visit	970	0.1	100.55, 85.14	75.04, 74.70
99214	Established patient office or other outpatient, visit typically 25 min	707	0.07	144.43, 120.56	112.68, 115.18
36415	Routine venipuncture	579	0.06	8.40, 3.89	3.00, 3.00
Q9967	LOCM 300–399mg/ml iodine, 1ml	344	0.04	336.87, 165.17	152.19, 165.17
86617	Confirmation test for antibody to Borrelia burgdorferi (Lyme disease bacteria)	308	0.03	64.58, 32.82	28.49, 28.49
85025	Complete blood cell count (red cells, leukocyte, platelets), automated test	287	0.03	26.57, 18.03	14.30, 14.30
86618	Analysis for antibody Borrelia burgdorferi (Lyme disease bacteria)	273	0.03	42.44, 33.62	31.32, 31.32
J3490	Unclassified drugs	180	0.02	489.57, 28.90	37.95, 28.90
97110	Therapeutic exercises	166	0.02	64.88, 49.72	33.17, 32.36
J1642	Injection, heparin sodium, (heparin lock flush), per 10 units	130	0.01	248.86, 24.21	24.21, 24.21
80053	Blood test, comprehensive group of blood chemicals	105	0.01	40.06, 14.87	19.43, 19.43
97112	Neuromuscular reeducation	102	0.01	44.74, 25.22	34.03, 33.71
86140	Measurement C-reactive protein for detection of infection or inflammation	96	0.01	21.47, 9.49	9.52, 9.52
98940	Chiropractic manipulative treatment, 1–2 spinal regions	88	0.01	38.20, 28.00	29.52, 29.43
80048	Blood test, basic group of blood chemicals	87	0.01	33.53, 18.90	15.55, 15.55
J0696	Injection, ceftriaxone sodium, per 250 mg	85	0.01	165.44, 32.76	44.70, 32.76
A9585	Injection, gadobutrol, 0.1 ml	83	0.01	228.98, 90.00	90.01, 90.00
99212	Established patient office or other outpatient visit, typically 10 min	82	0.01	68.39, 51.74	45.35, 45.11
90471	Administration of 1 vaccine	78	0.01	26.87, 24.47	26.56, 25.52
99203	New patient office or other outpatient visit, typically 30 min	77	0.01	138.31, 109.00	112.28, 116.07
85652	Red blood cell erythrocyte sedimentation rate, to detect inflammation	76	0.01	10.53, 4.73	4.97, 4.97
93000	Routine EKG using at least 12 leads including interpretation and report	75	0.01	47.41, 38.79	17.95, 18.34
87880	Strep test (Streptococcus, group A)	70	0.01	20.26, 17.31	22.05, 22.05
99284	Emergency department visit, problem of high severity	70	0.01	532.25, 411.12	119.94, 120.87
85027	Complete blood cell count (red cells, leukocyte, platelets), automated test	65	0.01	23.06, 13.97	11.90, 11.90

Appendix Table 7. Societal Perspective: total cost of Lyme disease per participant, by demographic characteristic, n = 613

Characteristic	Category	N	Mean (2016 US dollars)	Median (2016 US dollars)
Disease category	Confirmed localized	273	1307	493
	Confirmed disseminated	154	3251	1081
	Probable	186	2620	940
Age group, y	<18	173	1550	503
	18–45	96	2100	960
	46–65	228	2421	1136
	>65	116	1926	521
Sex	Female	262	1417	646
	Male	351	2497	741
Race	Non-White	45	2188	774
	White	568	2021	685
State	CT	128	3307	621
	MD	203	1493	604
	MN	191	2112	1124
	NY	91	1470	434
Income*	≤\$60,000	160	2159	685
	>\$60,000	398	2088	696
Insurance	Private	438	2295	807
	Other	175	1376	578

*Participants were not required to provide information on income; n = 558.

Appendix Table 8. Multivariable linear regression results: factors influencing total societal cost of Lyme disease per participant (n = 613)*

Variable	Coefficient	Standard error of coefficient	Exp(coefficient) ²	Percent difference (%)	Cost difference (2016 USD)	95% CI for cost difference (2016 USD)	P value
Baseline (Intercept) [†]	5.72	0.20	305.08	NA	NA	206.28 – 451.20	<0.001
Confirmed disseminated	0.79	0.11	2.20	120	366.58	188.12 – 545.04	<0.001
Probable	0.47	0.10	1.59	59	181.13	70.84 – 291.42	<0.001
18–45 y	0.67	0.15	1.96	96	292.99	107.11 – 478.88	<0.001
46–65 y	0.73	0.11	2.08	108	330.79	175.08 – 486.50	<0.001
>65 y	0.24	0.17	1.27	27	83.65	-27.51 – 194.81	0.15
Male	0.11	0.09	1.11	11	34.56	-25.67 – 94.8	0.24
MD	0.00	0.13	1.00	0	-0.01	-75.98 – 75.97	1.00
MN	0.56	0.13	1.75	75	229.44	113.85 – 345.03	<0.001
NY	-0.06	0.17	0.94	-6	-18.52	-118.96 – 81.91	0.72
Privately insured	0.24	0.15	1.27	27	82.53	-23.22 – 188.28	0.11
>\$60,000 income	-0.06	0.12	0.94	-6	-18.52	-90.11 – 53.08	0.61
Study year 2015	-0.07	0.10	0.93	-7	-21.35	306.05 – 427.11	0.48
Study year 2016	0.50	0.50	1.65	65	197.52	-306.37 – 668.64	0.32

*The model included independent variables of interest, i.e., disease category, age group, sex, and state, while controlling for insurance status, income, and study year. Reference levels are not shown but are described in Table 6 of main article (<https://wwwnc.cdc.gov/EID/article/28/6/21-1335-T5.htm>). Adjusted R² = 0.19.

†Beta coefficients were back transformed by exponentiation, interpreted as the multiplicative difference in the geometric mean of the total cost of Lyme disease for a 1-unit difference in the independent variable of interest after adjusting for confounders.

‡Percent difference = (Exp(coefficient) – 1) * 100; this represents the percent change in cost from baseline for each level of each variable, excluding reference (i.e., baseline) levels.

§Baseline cost (i.e., e^{β₀}) represents a patient with confirmed localized Lyme disease, female, aged <18 y, with residence in CT, without private insurance, with income <\$60,000, and study year of 2014.

Appendix Table 9. Inputs for extrapolation of total Lyme disease cost per participant to aggregate total Lyme disease cost to US society

Lyme disease category	Estimated proportion of total cases	Total cases	Mean total cost per participant*	Total aggregate cost using mean cost per participant*	Median total cost per participant*	Total aggregate cost using median cost per participant*
Confirmed localized	0.547	260,435	1,307	340,388,077	493	128,394,278
Confirmed disseminated	0.211	100,278	3,251	326,004,293	1,081	108,400,689
Probable	0.242	115,287	2,620	302,052,464	940	108,369,968

*2016 USD

Appendix Table 10. Estimated annual total Lyme disease cost to US society

Category	Mean	Median
Total (2016 USD)	968,444,834	345,164,936
Total (2020 USD)*	1,039,260,297	370,404,385
Total (2020 USD, medical CPI)†	1,078,657,584	384,446,034

*Converted to 2020 USD using Consumer Price Index, "All items in U.S. city average, all urban consumers, not seasonally adjusted" (CPI-U, Series ID: CUUR0000SA0). 2016 annual average CPI and 2020 first half of year average CPI used. Data extracted from <https://data.bls.gov/pdq/SurveyOutputServlet> on 9/30/2020.

†Converted to 2020 USD using Consumer Price Index, "Medical care in U.S. city average, all urban consumers, not seasonally adjusted" (CPI-U Medical care, Series ID: CUUR0000SAM). 2016 annual average CPI and 2020 first half of year average CPI used. Data extracted from <https://data.bls.gov/pdq/SurveyOutputServlet> on 9/30/2020.