

Acknowledgments

We thank Anne Teirlinck, Gé Donker, Mariëtte Hooiveld, Janneke Hendriksen, the general practitioners, and the patients who contributed to the virologic part of the national sentinel surveillance for influenza-like illness and acute respiratory infection. We also thank Peter Spreeuwenberg for his statistical advice.

This study was funded by Sanofi Pasteur and AstraZeneca.

L.S., A.M., A.P.R., S.H., C.C., J.S., and S.C. declare no competing interests. J.P. declares that Nivel has received unrestricted research grants from the World Health Organization, Sanofi Pasteur, and the Foundation for Influenza Epidemiology. C.D. is an employee of Sanofi Pasteur and may hold shares or stock options in the company.

About the Author

Ms. Staaedegaard is an epidemiologist working at the Netherlands Institute for Health Services Research in the Netherlands. Her main research interests include the epidemiology of infectious diseases, with a current focus on respiratory infections.

References

- Shi T, McAllister DA, O'Brien KL, Simoes EAF, Madhi SA, Gessner BD, et al.; RSV Global Epidemiology Network. Global, regional, and national disease burden estimates of acute lower respiratory infections due to respiratory syncytial virus in young children in 2015: a systematic review and modelling study. *Lancet*. 2017;390:946–58. [https://doi.org/10.1016/S0140-6736\(17\)30938-8](https://doi.org/10.1016/S0140-6736(17)30938-8)
- Shi T, Denouel A, Tietjen AK, Campbell I, Moran E, Li X, et al. Global disease burden estimates of respiratory syncytial virus-associated acute respiratory infection in older adults in 2015: a systematic review and meta-analysis. *J Infect Dis*. 2020;222:S577–83.
- Haynes AK, Prill MM, Iwane MK, Gerber SJ; Centers for Disease Control and Prevention (CDC). Respiratory syncytial virus—United States, July 2012–June 2014. *MMWR Morb Mortal Wkly Rep*. 2014;63:1133–6.
- Yu J, Liu C, Xiao Y, Xiang Z, Zhou H, Chen L, et al. Respiratory syncytial virus seasonality, Beijing, China, 2007–2015. *Emerg Infect Dis*. 2019;25:1127–35. <https://doi.org/10.3201/eid2506.180532>
- Vos LM, Teirlinck AC, Lozano JE, Vega T, Donker GA, Hoepelman AI, et al. Use of the moving epidemic method (MEM) to assess national surveillance data for respiratory syncytial virus (RSV) in the Netherlands, 2005 to 2017. *Euro Surveill*. 2019;24. <https://doi.org/10.2807/1560-7917.ES.2019.24.20.1800469>
- Sáez-López E, Pechirra P, Costa I, Cristóvão P, Conde P, Machado A, et al. Performance of surveillance case definitions for respiratory syncytial virus infections through the sentinel influenza surveillance system, Portugal, 2010 to 2018. *Euro Surveill*. 2019;24. <https://doi.org/10.2807/1560-7917.ES.2019.24.45.1900140>
- Prasad N, Newbern EC, Trenholme AA, Wood T, Thompson MG, Aminisani N, et al. Respiratory syncytial virus hospitalisations among young children: a data linkage study. *Epidemiol Infect*. 2019;147:e246. <https://doi.org/10.1017/S0950268819001377>
- Rha B, Dahl RM, Moyes J, Binder AM, Tempia S, Walaza S, et al. Performance of surveillance case definitions in detecting respiratory syncytial virus infection among young children hospitalized with severe respiratory illness—South Africa, 2009–2014. *J Pediatric Infect Dis Soc*. 2019;8:325–33. <https://doi.org/10.1093/jpids/piy055>

Address for correspondence: Lisa Staaedegaard, Nivel, Otterstraat 118, 3513 CR Utrecht, the Netherlands; email: l.staaedegaard@nivel.nl

Novel SARS-CoV-2 Variant Derived from Clade 19B, France

Slim Fourati, Jean-Winoc Decousser, Souraya Khouider, Melissa N'Debi, Vanessa Demontant, Elisabeth Trawinski, Aurélie Gurgeon, Christine Gangloff, Grégory Destras, Antonin Bal, Laurence Josset, Alexandre Soulier, Yannick Costa, Guillaume Gricourt, Bruno Lina, Raphaël Lepeule, Jean-Michel Pawlotsky, Christophe Rodriguez

Author affiliations: Institut Mondor de Recherche Biomédicale, Université Paris-Est, Créteil, France; (S. Fourati, S. Khouider, A. Gurgeon, A. Soulier, J.-M. Pawlotsky, C. Rodriguez); Hôpital Henri Mondor, Créteil (J.-W. Decousser, M. N'Debi, V. Demontant, E. Trawinski, G. Gricourt, R. Lepeule, C. Rodriguez); Hôpital Albert Chenevier, Créteil (C. Gangloff); Université de Lyon, France (G. Destras, A. Bal, L. Josset, B. Lina); Grand Hôpital de l'Est Francilien, Jossigny, France (Y. Costa)

DOI: <https://doi.org/10.3201/eid2705.210324>

We report a novel severe acute respiratory syndrome coronavirus 2 variant derived from clade 19B (HMN.19B variant or Henri Mondor variant). This variant is characterized by the presence of 18 amino acid substitutions, including 7–8 substitutions in the spike protein and 2 deletions. These variants actively circulate in different regions of France.

During fall 2020, new severe acute respiratory syndrome coronavirus 2 (SARS-CoV-2) variants, some of which have become variants of concern, progressively replaced the original strains in regions

Table. Amino acid changes within the spike protein sequence of the HMN.19B variant in France compared with the reference sequence of the international GISAID database (GenBank accession no. NC_045512.2), in comparison with other recently identified SARS-CoV-2 variants*

| <i>Spike protein sequence</i> | | | | |
|---|-----------------------------|--|---------------------------------------|--|
| <i>HMN.19B</i> (Henri Mondor variant) | 20I/501Y.V1 (UK variant) | 20H/501Y.V2 (South African variant) | P1 20J/501Y.V3 (Brazilian variant) | CAL.20C (Californian variant) S13I |
| L18F | | L18F | L18F T20N P26S | |
| | Del69/70 | D80A | D138Y | |
| | Del144 | | R190S | W152C |
| | | D215G Del 242–244 R246I K417N | K417T | |
| L452R | | E484K | E484K | L452R |
| N501Y | N501Y A570D | N501Y | N501Y | |
| A653V H655Y Q677H† | | | H655Y | |
| | P681H | A701V | | |
| | T716I | | | |
| D796Y | S982A | | T1027I | |
| | D1118H | | | |
| G1219V | | | | |

*Bold type indicates amino acid changes observed in ≥ 1 of the recent variants.

†Inconstantly detected, recently found in the genome of the “Midwest” variant (Q677H variant) observed in Ohio (USA) in December 2020 and January 2021.

where they were first identified. We report a new SARS-CoV-2 variant of interest derived from clade 19B (tentatively named HMN.19B variant, or Henri Mondor variant) that is actively circulating in France.

On January 21, 2021, a hospital administrative assistant receiving long-term treatment with anti-tumor necrosis factor- α (adalimumab) for ankylosing spondylitis sought treatment for headache, fatigue, and rhinitis suggestive of coronavirus disease (COVID-19). SARS-CoV-2 RNA was confirmed by reverse transcription PCR (RT-PCR). Her partner (household contact), along with 2 nurses from the same occupational health unit sharing their locker room with the administrative assistant, sought treatment for symptoms suggestive of COVID-19 during January 21–23. Virus was confirmed in all instances by RT-PCR.

The slightly immunocompromised administrative assistant and her immunocompetent partner reported a history of symptomatic COVID-19 infection in early October 2020, confirmed in both cases by a positive RT-PCR result. However, both patients tested negative for SARS-CoV-2 protein N antibody

in January 2021. One of the 2 infected nurses had received a first dose of COVID-19 vaccine (Pfizer-BioNTech, <https://www.pfizer.com>) 11 days before her positive RT-PCR result. All 4 patients experienced mild COVID-19 and did not require hospitalization.

Full-length genome sequencing revealed that the 4 cluster members were infected with a new phylogenetic variant stemming from clade 19B, tentatively called HMN.19B variant or Henri Mondor variant (Appendix, <https://wwwnc.cdc.gov/EID/article/27/5/21-0324-App1.pdf>). Compared with the reference sequence (GenBank accession no. NC_045512.2) from the international GISAID database (<https://www.gisaid.org>), variant HMN.19B carries 25 nt substitutions, with a high ratio of non-synonymous ($n = 18$) to synonymous ($n = 7$) mutations, 2 deletions, and a high number of amino acid substitutions within the spike protein ($n = 8$) at key positions: spike substitutions in comparison with other recently emerged variants (Table) and all mutations (Figure).

In the 4 weeks after its first detection, our laboratory, which maintains 1 of the 4 national SARS CoV-2

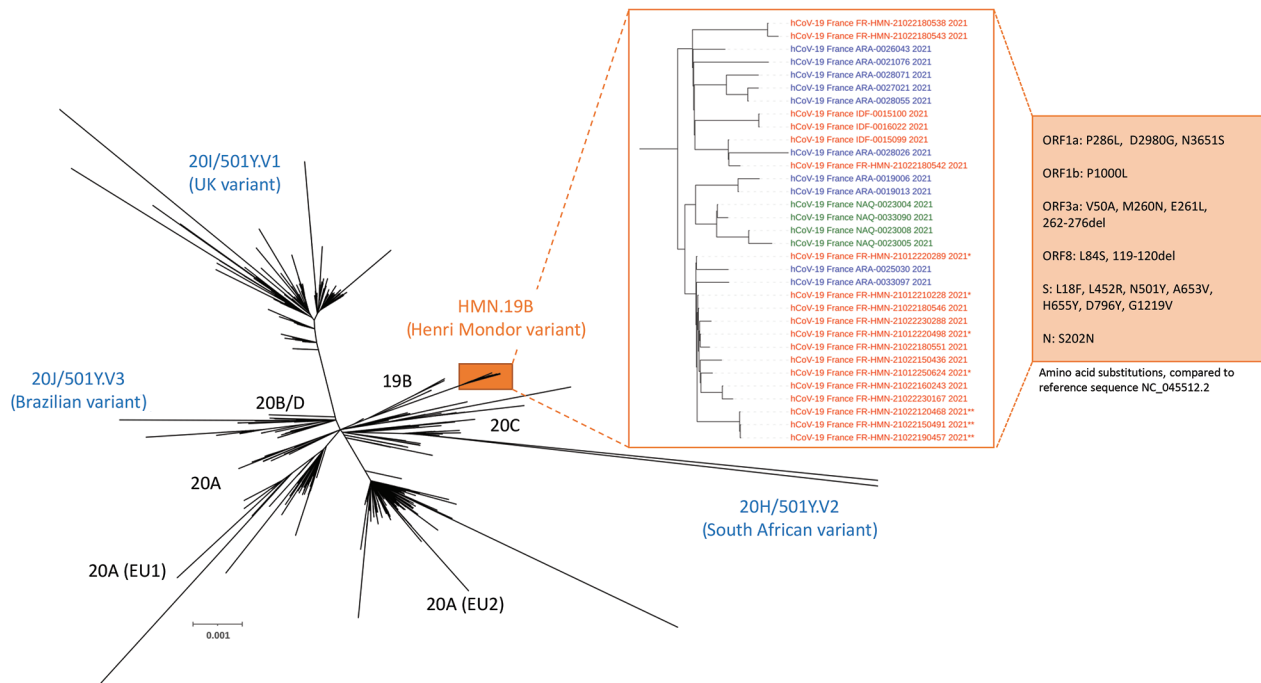


Figure. Phylogenetic tree built with sequences from the 33 patients infected with the new HMN.19B or Henri Mondor variant and from 1,537 SARS-CoV-2-infected patients in France sampled during January 18–February 23, 2021, sequenced in 9 successive series. Phylogeny was performed after full-length genome alignment with Muscle 3.8.31 (maximum-likelihood model general time-reversible plus invariant sites model, 1,000 bootstrap replicates) by means of IQ-Tree 1.3.11.1 and iTOL. The HMN.19B (Henri Mondor) variant cluster is considerably different from all the others, with a 99% bootstrap value. HMN.19B sequences are colored according to the geographic origin of the patients: red, greater Paris area (IDF or HMN); blue, southeast France (ARA); green, southwest France (NAQ). *Original cluster in an occupational health unit; **cluster in the hematology department of our institution. Amino-acid substitutions and deletions detected in all sequences are described in the orange box. ARA, Auvergne-Rhône-Alpes; HMN, Henri Mondor; IDF, Ile-de-France; NAQ, Nouvelle-Aquitaine.

sequencing surveillance platforms in France, found the HMN.19B variant in 12 patients from the greater Paris area (Figure). These patients were 1 prison administration staff member from northeast of the Paris area, tested February 9 during a prison screening campaign; 3 epidemiologically related subjects from a cluster in the hematology department of our hospital (an asymptomatic nursing student tested February 12, his mentor nurse tested February 14, and a hospitalized patient tested February 15); and 8 epidemiologically unrelated cases found positive for SARS-CoV-2 RNA during February 3–23 in different hospitals in the greater Paris area (GISAID identification numbers in Appendix Table).

During the same period, the National Reference Center for Respiratory Viral Infections (Lyon, France) identified 17 additional patients infected with closely related viruses, which carried ≥ 7 similar substitutions in spike (some were lacking Q677H in spike [Figure]). Three patients were from the greater Paris area, 10 from southeastern France, and 4 from southwestern France (Figure).

We identified a new, previously undescribed variant of SARS-CoV-2 (HMN.19B or Henri Mondor variant) within a cluster of hospital staff in Paris. This variant stems from an older SARS-CoV-2 clade, 19B, which emerged in late 2019 but have been rarely detected since early 2020, overtaken by clades 20A, 20B, and 20C, which harbor the D614G substitution believed to improve viral transmission (1). The HMN.19B variant is characterized by the presence of 2 deletions and 18 amino acid substitutions over the entire sequence, including 8 substitutions within the spike protein, some of which are common with other recently described variants, a finding in keeping with the ongoing evolutionary convergence of SARS-CoV-2 variants. The acquisition of spike substitutions, including N501Y and L452R, has been suggested to enhance the interaction of spike with the angiotensin-converting enzyme 2 viral receptor. The resulting substantial fitness acquisition could explain the reappearance of clade 19B (2; Yang et al., unpub. data, <https://doi.org/10.1101/2020.12.29.42469>).

New variants with several spike mutations (20I/501Y.V1) have been associated with increased transmissibility. Whether HMN.19B will be less susceptible to protection by natural, therapeutic, or vaccine-induced immune responses remains to be determined. Several of its spike substitutions (N501Y, L452R, and H655Y) have been shown to require higher levels of neutralizing antibodies to be controlled, both in vitro and in vivo (3,4; Liu et al., unpub. data, <https://doi.org/10.1101/2020.11.06.372037>).

In conclusion, we report a new SARS-CoV-2 variant circulating in France. Our results emphasize the need for careful molecular surveillance of SARS-CoV-2 evolution to track emergence of any new variant of interest with potential epidemiologic or pathologic consequences.

Acknowledgments

We thank Martine Valette and Quentin Semanas for their help and commitment.

About the Author

Dr. Fourati is a researcher at University of East Paris, Créteil, France. He is also a clinical virologist in the Department of Microbiology, Henri Mondor Hospital, Créteil, France. His primary research interests include viral evolution and adaptation, and viral hepatitis and respiratory viruses including SARS CoV-2.

References

1. Korber B, Fischer WM, Gnanakaran S, Yoon H, Theiler J, Abfalterer W, et al.; Sheffield COVID-19 Genomics Group. Tracking changes in SARS-CoV-2 spike: evidence that D614G increases infectivity of the COVID-19 virus. *Cell*. 2020;182:812-827.e19. <https://doi.org/10.1016/j.cell.2020.06.043>
2. Weisblum Y, Schmidt F, Zhang F, DaSilva J, Poston D, Lorenzi JC, et al. Escape from neutralizing antibodies by SARS-CoV-2 spike protein variants. *eLife*. 2020;9:e61312. <https://doi.org/10.7554/eLife.61312>
3. Choi B, Choudhary MC, Regan J, Sparks JA, Padera RF, Qiu X, et al. Persistence and evolution of SARS-CoV-2 in an immunocompromised host. *N Engl J Med*. 2020;383:2291-3. <https://doi.org/10.1056/NEJMc2031364>
4. Baum A, Fulton BO, Wloga E, Copin R, Pascal KE, Russo V, et al. Antibody cocktail to SARS-CoV-2 spike protein prevents rapid mutational escape seen with individual antibodies. *Science*. 2020;369:1014-8. <https://doi.org/10.1126/science.abd0831>

Address for correspondence: Slim Fourati, Virology Department, Henri Mondor Hospital, 51 Av. du Maréchal de Lattre de Tassigny, 94010 Créteil, France; email: slim.fourati@aphp.fr

Undocumented Migrants Reintroducing COVID-19, Yunnan Province, China

Meiling Zhang,¹ Jienan Zhou,¹ Senquan Jia, Xiaonan Zhao, Yaoyao Chen, Yanhong Sun, Zhaosheng Liu, Xiaofang Zhou, Duo Li, Chunrui Luo, Yong Zhang, Violet Magoma Onsongo, Yong Shao, Xiaoqing Fu

Author affiliations: Yunnan Provincial Center for Disease Control and Prevention, Kunming, China (M.L. Zhang, J.N. Zhou, S.Q. Jia, X.N. Zhao, Y.Y. Chen, Y.H. Sun, Z.S. Liu, X.F. Zhou, D. Li, C.R. Luo, Y. Zhang, X.Q. Fu); Kunming Institute of Zoology, Kunming (V.M. Onsongo, Y. Shao)

DOI: <https://doi.org/10.3201/eid2705.204944>

To limit the spread of severe acute respiratory syndrome coronavirus 2, the government of China has been monitoring infected travelers and minimizing cold-chain contamination. However, other factors might contribute to recurring outbreaks. We analyze the role of undocumented migrants as potential transmitters of severe acute respiratory syndrome coronavirus 2 in China.

China's efforts to suppress coronavirus disease (COVID-19), the illness caused by severe acute respiratory syndrome coronavirus 2 (SARS-CoV-2), rely on rigorous quarantine measures. These measures contributed to a decline in COVID-19 cases; no new locally acquired cases were reported in China on March 18, 2020 (http://www.nhc.gov.cn/xcs/yqtb/list_gzbd_10.shtml). As a result, the focus of epidemic control and prevention work has shifted from local to imported cases of COVID-19. Although viral spread has been contained by mandates minimizing travel and cold-chain contamination (1), recurring COVID-19 outbreaks might be caused by other factors and pathways. On September 14, 2020, the discovery of 2 SARS-CoV-2-infected undocumented migrants from Myanmar prompted large-scale testing of >280,000 persons in Ruili, Yunnan Province, China (Figure).

On March 31, 2020, the Yunnan Provincial Leading Group for COVID-19 Epidemic Response published Notice No. 15 (http://www.yn.gov.cn/zttg/yqfk/zcfk/202004/t20200401_201604.html), which outlined strict measures to prevent COVID-19 importation from land and water ports. This notice discouraged citizens of adjacent countries from entering Yunnan Province; if entry was required, then those

¹These authors contributed equally to this article.

Novel SARS-CoV-2 Variant Derived from Clade 19B, France

Appendix

Methods

The full-length SARS-CoV-2 genomes from the 4 infected patients were sequenced by next-generation sequencing. Viral RNA was extracted from nasopharyngeal swabs with a NucliSENS easyMAG kit on an EMAG device (bioMérieux, <https://www.biomerieux.com>). Sequencing was performed with the COVIDSeq Test (Illumina, <https://www.illumina.com>), which uses 98-target multiplex amplifications along the full SARS-CoV-2 genome (Bhoyar et al. unpub. data, <https://doi.org/10.1101/2020.08.10.242677>). The libraries were sequenced with NextSeq 500/550 High Output Kit 2.5 on a NextSeq 500 device (Illumina). The sequences were demultiplexed and assembled as full-length genomes with the DRAGEN COVIDSeq Test Pipeline on a DRAGEN server (Illumina). Lineages and clades were interpreted with Pangolin and NextClade (1). Phylogeny was performed after full-length genome alignment with Muscle 3.8.31 (maximum-likelihood model general time-reversible plus invariant sites; 1,000 bootstrap replicates) by using IQ-Tree version 1.3.11.1 and iTOL (2,3).

References

1. Rambaut A, Holmes EC, O'Toole Á, Hill V, McCrone JT, Ruis C, et al. A dynamic nomenclature proposal for SARS-CoV-2 lineages to assist genomic epidemiology. *Nat Microbiol.* 2020;5:1403–7. [PubMed <https://doi.org/10.1038/s41564-020-0770-5>](https://doi.org/10.1038/s41564-020-0770-5)
2. Minh BQ, Schmidt HA, Chernomor O, Schrempf D, Woodhams MD, von Haeseler A, et al. IQ-TREE 2: new models and efficient methods for phylogenetic inference in the genomic era. *Mol Biol Evol.* 2020;37:1530–4. [PubMed <https://doi.org/10.1093/molbev/msaa015>](https://doi.org/10.1093/molbev/msaa015)
3. Letunic I, Bork P. Interactive Tree Of Life (iTOL) v4: recent updates and new developments. *Nucleic Acids Res.* 2019;47(W1):W256–9. [PubMed <https://doi.org/10.1093/nar/gkz239>](https://doi.org/10.1093/nar/gkz239)

Appendix Table. Amino acid substitutions observed in the spike protein of the 19B.HMN variants*

| Lab identification number submitted to GISAID | Amino acid position in spike protein | | | | | | | | | | | | | |
|---|--------------------------------------|------|------|-------|-------|-------|-------|-------|-------|-------|-------|--------|--------|--------|
| | 18 | 49 | 70 | 346 | 452 | 501 | 653 | 655 | 677 | 796 | 798 | 1113 | 1191 | 1219 |
| hCoV-19/France/FR-HMN-21022180538/2021 | L18F | | | | L452R | N501Y | A653V | H655Y | | D796Y | G798D | | | G1219V |
| hCoV-19/France/FR-HMN-21022180543/2021 | L18F | | | | L452R | N501Y | A653V | H655Y | | D796Y | G798D | | | G1219V |
| hCoV-19/France/ARA-0026043/2021 | L18F | | | | L452R | N501Y | A653V | H655Y | | D796Y | | | | G1219V |
| hCoV-19/France/ARA-0021076/2021 | L18F | | | | L452R | N501Y | A653V | H655Y | | D796Y | | | | G1219V |
| hCoV-19/France/ARA-0028071/2021 | L18F | | | | L452R | N501Y | A653V | H655Y | | D796Y | | | | G1219V |
| hCoV-19/France/ARA-0027021/2021 | L18F | H49Y | | | L452R | N501Y | A653V | H655Y | | D796Y | | | | G1219V |
| hCoV-19/France/ARA-0028055/2021 | L18F | H49Y | | | L452R | N501Y | A653V | H655Y | | D796Y | | | | G1219V |
| hCoV-19/France/IDF-0015100/2021 | L18F | | | | L452R | N501Y | A653V | H655Y | | D796Y | | | | G1219V |
| hCoV-19/France/IDF-0016022/2021 | L18F | | | | L452R | N501Y | A653V | H655Y | | D796Y | | | | G1219V |
| hCoV-19/France/IDF-0015099/2021 | L18F | | | | L452R | N501Y | A653V | H655Y | | D796Y | | | | G1219V |
| hCoV-19/France/ARA-0028026/2021 | L18F | | | | L452R | N501Y | A653V | H655Y | | D796Y | | | | G1219V |
| hCoV-19/France/FR-HMN-21022180542/2021 | L18F | | | | L452R | N501Y | A653V | H655Y | | D796Y | | | | G1219V |
| hCoV-19/France/ARA-0019006/2021 | L18F | | | R346I | L452R | N501Y | A653V | H655Y | Q677H | D796Y | | | K1191N | G1219V |
| hCoV-19/France/ARA-0019013/2021 | L18F | | | R346I | L452R | N501Y | A653V | H655Y | Q677H | D796Y | | | K1191N | G1219V |
| hCoV-19/France/NAQ-0023004/2021 | L18F | | | | L452R | N501Y | A653V | H655Y | Q677H | D796Y | | | K1191N | G1219V |
| hCoV-19/France/NAQ-0033090/2021 | L18F | | V70F | | L452R | N501Y | A653V | H655Y | Q677H | D796Y | | | K1191N | G1219V |
| hCoV-19/France/NAQ-0023008/2021 | L18F | | | | L452R | N501Y | A653V | H655Y | Q677H | D796Y | | | K1191N | G1219V |
| hCoV-19/France/NAQ-0023005/2021 | L18F | | | | L452R | N501Y | A653V | H655Y | Q677H | D796Y | | | K1191N | G1219V |
| hCoV-19/France/FR-HMN-21012220289/2021 | L18F | | | | L452R | N501Y | A653V | H655Y | Q677H | D796Y | | | | G1219V |
| hCoV-19/France/ARA-0025030/2021 | L18F | | | | L452R | N501Y | A653V | H655Y | Q677H | D796Y | | | | G1219V |
| hCoV-19/France/ARA-0033097/2021 | L18F | | | | L452R | N501Y | A653V | H655Y | Q677H | D796Y | | Q1113K | | G1219V |
| hCoV-19/France/FR-HMN-21012210228/2021 | L18F | | | | L452R | N501Y | A653V | H655Y | Q677H | D796Y | | | | G1219V |
| hCoV-19/France/FR-HMN-21022180546/2021 | L18F | | | | L452R | N501Y | A653V | H655Y | Q677H | D796Y | | | | G1219V |
| hCoV-19/France/FR-HMN-21022230288/2021 | L18F | | | | L452R | N501Y | A653V | H655Y | Q677H | D796Y | | | | G1219V |
| hCoV-19/France/FR-HMN-21012220498/2021 | L18F | | | | L452R | N501Y | A653V | H655Y | Q677H | D796Y | | | | G1219V |
| hCoV-19/France/FR-HMN-21022180551/2021 | L18F | | | | L452R | N501Y | A653V | H655Y | Q677H | D796Y | | | | G1219V |
| hCoV-19/France/FR-HMN-21022150436/2021 | L18F | | | | L452R | N501Y | A653V | H655Y | Q677H | D796Y | | | | G1219V |
| hCoV-19/France/FR-HMN-21012250624/2021 | L18F | | | | L452R | N501Y | A653V | H655Y | Q677H | D796Y | | | | G1219V |
| hCoV-19/France/FR-HMN-21022160243/2021 | L18F | | | | L452R | N501Y | A653V | H655Y | Q677H | D796Y | | | | G1219V |
| hCoV-19/France/FR-HMN-21022230167/2021 | L18F | | | | L452R | N501Y | A653V | H655Y | Q677H | D796Y | | | | G1219V |
| hCoV-19/France/FR-HMN-21022120468/2021 | L18F | | | | L452R | N501Y | A653V | H655Y | Q677H | D796Y | | | | G1219V |
| hCoV-19/France/FR-HMN-21022150491/2021 | L18F | | | | L452R | N501Y | A653V | H655Y | Q677H | D796Y | | | | G1219V |
| hCoV-19/France/FR-HMN-21022190457/2021 | L18F | | | | L452R | N501Y | A653V | H655Y | Q677H | D796Y | | | | G1219V |

*HMN.19B spike sequences are colored based on geographic region of origin of patients: greater Paris area (IDF or HMN) in red, southeast France (ARA) in blue, and southwest France (NAQ) in green.