

# Coronavirus Disease Model to Inform Transmission-Reducing Measures and Health System Preparedness, Australia

Robert Moss, James Wood, Damien Brown, Freya M. Shearer, Andrew J. Black, Kathryn Glass, Allen C. Cheng, James M. McCaw, Jodie McVernon

The ability of health systems to cope with coronavirus disease (COVID-19) cases is of major concern. In preparation, we used clinical pathway models to estimate healthcare requirements for COVID-19 patients in the context of broader public health measures in Australia. An age- and risk-stratified transmission model of COVID-19 demonstrated that an unmitigated epidemic would dramatically exceed the capacity of the health system of Australia over a prolonged period. Case isolation and contact quarantine alone are insufficient to constrain healthcare needs within feasible levels of expansion of health sector capacity. Overlaid social restrictions must be applied over the course of the epidemic to ensure systems do not become overwhelmed and essential health sector functions, including care of COVID-19 patients, can be maintained. Attention to the full pathway of clinical care is needed, along with ongoing strengthening of capacity.

As of late September 2020, >30.6 million confirmed cases of coronavirus disease (COVID-19) were reported worldwide, involving all global regions and resulting in >950,000 deaths (1). Although most cases are clinically mild or asymptomatic, early reports from China estimated that 20% of all COVID-19 patients progressed to severe disease and required

hospitalization, 5%–16% of whom required management in an intensive care unit (ICU) (2). Pulmonary disease leading to respiratory failure has been the major cause of death in severe cases (3).

The ability of health systems around the world to cope with increasing case numbers is of major concern. All levels of the system will be challenged, from primary care, prehospital and emergency department (ED) services to inpatient units and ultimately ICUs. Stresses on clinical care provision will result in increased illness and death (4). Such tragic consequences already have been observed, even in high-income countries that provide the whole population with access to quality medical care. Greater effects can be expected in low- and middle-income countries where access to high-level care is extremely limited. Availability of ICU beds and ventilators has proven critical for the adequate management of severe cases, with overwhelming demand initiating complex ethical discussions about rationing of scarce resources (5).

To prepare for this challenge, Australia has drawn on approaches developed over many years to prepare for influenza pandemics (6), and rapidly produced a national COVID-19 pandemic plan (7). The plan reoriented relevant influenza pandemic response strategies toward this new pathogen, building on emerging understanding of its anticipated transmissibility and severity, which are the determinants of clinical impact (8). Early imposition of stringent border measures, high levels of testing, active case-finding, and quarantine of contacts all have bought time to reinforce public health and clinical capacity. However, an influx of cases among travelers returning from countries with rapidly growing epidemics have been associated with community transmission in several states in Australia. By April

Author affiliations: The University of Melbourne, Melbourne, Victoria, Australia (R. Moss, F.M. Shearer, J.M. McCaw, J. McVernon); University of New South Wales, Sydney, New South Wales, Australia (J. Wood); The Peter Doherty Institute for Infection and Immunity at the University of Melbourne and Royal Melbourne Hospital, Melbourne (D. Brown, J.M. McCaw, J. McVernon); University of Adelaide, Adelaide, South Australia, Australia (A.J. Black); Australian National University, Canberra, New South Wales, Australia (K. Glass); Monash University, Melbourne (A.C. Cheng); Murdoch Children's Research Institute, Melbourne (J. McVernon)

DOI: <https://doi.org/10.3201/eid2612.202530>

**Table 1.** Parameter assumptions used in a coronavirus disease transmission model, Australia

Parameter	Estimate or assumption	Justification
Fundamental assumptions		
Doubling time	6.4 d	Estimated in from early case growth in Wuhan, China, from Wu et al. (11) Based on Li et al. (12) and Lauer et al. (13)
Incubation period	5.2 d	
Derived assumptions		
$R_0$	2.53	Based on latent and infectious periods, with doubling time 6.4 d (Appendix, <a href="https://wwwnc.cdc.gov/EID/article/26/12/20-2530-App1.pdf">https://wwwnc.cdc.gov/EID/article/26/12/20-2530-App1.pdf</a> )
Latent (noninfectious) period	3.2 d	Assumes 2 d of presymptomatic transmission before completion of incubation period, based on contribution estimates from Ganyani et al. (14) and Tindal et al. (15)
Infectious period	9.68 d	Estimated, related to doubling time and incubation period (Appendix)

14, 2020, a total of 6,366 cases and 61 deaths had been reported in the country (9).

We report on the use of a clinical care pathways model that represents the national capacity of the health system of Australia. This framework initially was developed for influenza pandemic preparedness (10) and has been modified to estimate healthcare requirements for COVID-19 patients and inform needed service expansion. The ability of different sectors to meet anticipated demand was assessed by modeling plausible COVID-19 epidemic scenarios, overlaid on available capacity and models of patient flow and care delivery. An unmitigated outbreak is anticipated to completely overwhelm the healthcare system in Australia. Given realistic limits on capacity expansion, these models have made the case for ongoing case-targeted measures, combined with broader social restrictions, to reduce transmission and flatten the curve of the local epidemic to preserve health sector continuity.

## Methods

### Disease Transmission Model

We developed an age- and risk-stratified transmission model of COVID-19 infection based on a susceptible-exposed-infected-recovered (SEIR) paradigm (Appendix, <https://wwwnc.cdc.gov/EID/article/26/12/20-2530-App1.pdf>). Transmission parameters were based on information synthesis from multiple sources, with an assumed basic reproduction number ( $R_0$ ) of 2.53 and a doubling time of 6.4 days (Table 1). Potential for presymptomatic transmission was assumed to be  $\leq 48$  hours before symptom onset. Despite an increasing body of evidence regarding requirements of hospitalized patients for critical care, considerable uncertainty remains regarding the full pyramid of mild and moderately symptomatic disease. Therefore, we simulated a range of scenarios by using Latin hypercube sampling from distributions in which the proportion of all infections severe enough to require hospitalization ranged from 4.3%–8.6%. These totals represent the aggregate of strongly

age-skewed parameter assumptions (Table 2). For each scenario, corresponding distributions of mild cases being seen by primary care were sampled, ranging from 30%–45% at the lower range of the severe spectrum to 50%–75% for the most extreme cases and increasing linearly between the 2 ranges. Persons not seeking care in the healthcare system were assumed undetected cases without differentiation between those with mild or no symptoms.

### Case-Targeted Interventions

We simulated a case-targeted public health intervention. Cases were isolated at the point of diagnosis. We assumed isolation occurred 48 hours after symptom onset, limiting the effective infectious period and reducing infectiousness from the point of identification by 80%, enabling imperfect implementation. Targeted quarantine of close contacts was implemented in the model framework by dynamic assignment of a transient “contact” label. Each time a new infectious case appears in the model, a fixed number of temporary contacts are labeled. Only contacts can progress through the exposed and infectious states, however, most remain

**Table 2.** COVID-19 model severity parameter assumptions, relative to all denominator infections\*

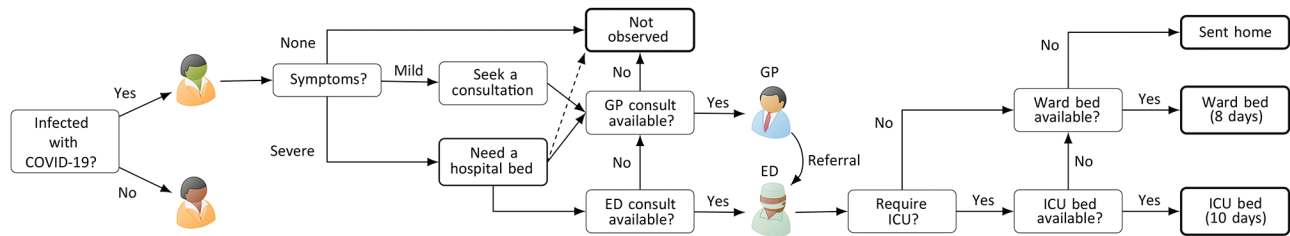
Age group, y	% Hospitalized, range†	% Hospitalized in ICU, range‡
0–9	0.03–0.06	0.01–0.02
10–19	0.03–0.06	0.01–0.02
20–29	0.39–0.78	0.11–0.23
30–39	1.4–2.90	0.43–0.85
40–49	2.55–5.11	0.75–1.50
50–59	4.95–9.90	1.45–2.91
60–69	7.75–15.49	2.27–4.55
70–79	17.88–35.76	5.25–10.50
$\geq 80$	32.97–65.94	9.68–19.36
Mean bed-days	8 d	10 d

\*COVID-19, coronavirus disease; ICU, intensive care unit.

†Assumed proportional to ICU values and based on calibration to non-Hubei, China, severe case rates (Appendix, <https://wwwnc.cdc.gov/EID/article/26/12/20-2530-App1.pdf>).

‡Combines use of data from Intensive Care National Audit and Research Centre (16) and COVID-19 Task Force of the Department of Infectious Diseases and Computer Service, Italy (17), and assumptions used in Ferguson et al. (18).

§Based on assumptions used in Ferguson et al. (18).



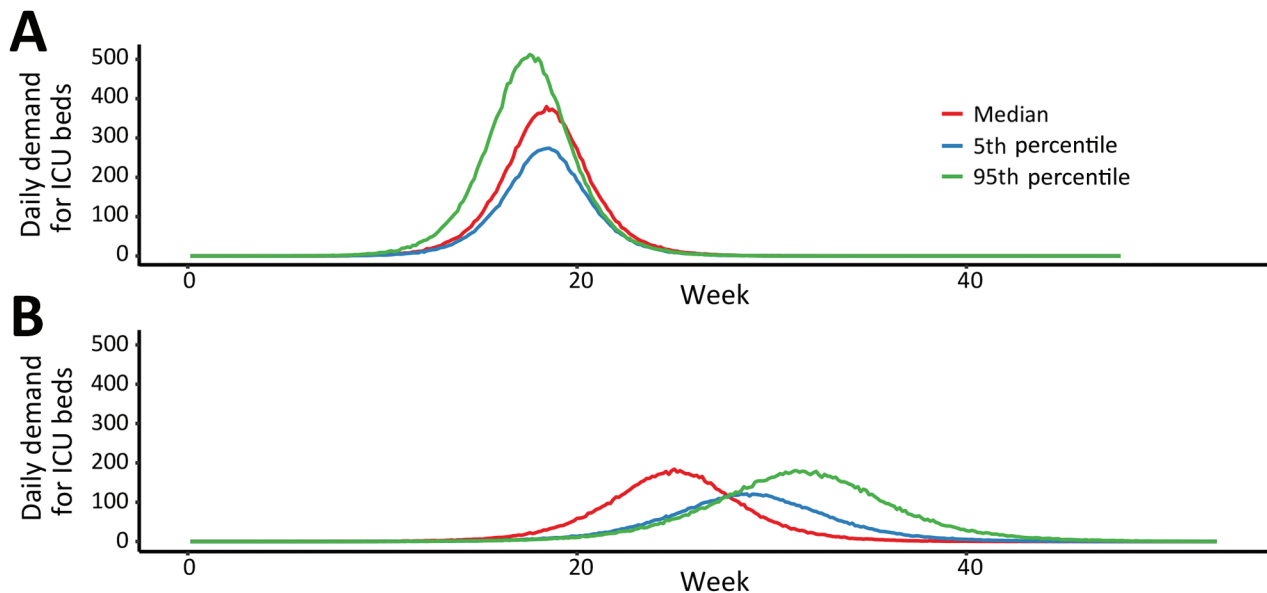
**Figure 1.** Clinical pathways model for used to assess national health system capacity for managing COVID-19 patients, Australia. The diagram demonstrates clinical pathways for mild and severe illness and assumes minor cases are managed within primary care. Unobserved patients are those who do not seek or are unable to access healthcare services. COVID-19, coronavirus disease; ED, emergency department; GP, general practitioner; ICU, intensive care unit.

uninfected and return to their original noncontact status  $\leq 72$  hours. We assumed that 80% of identified contacts adhered to quarantine measures and that the overall infectiousness of truly exposed and infected contacts was halved by quarantine, given delayed and imperfect contact tracing and the risk for transmission to household members.

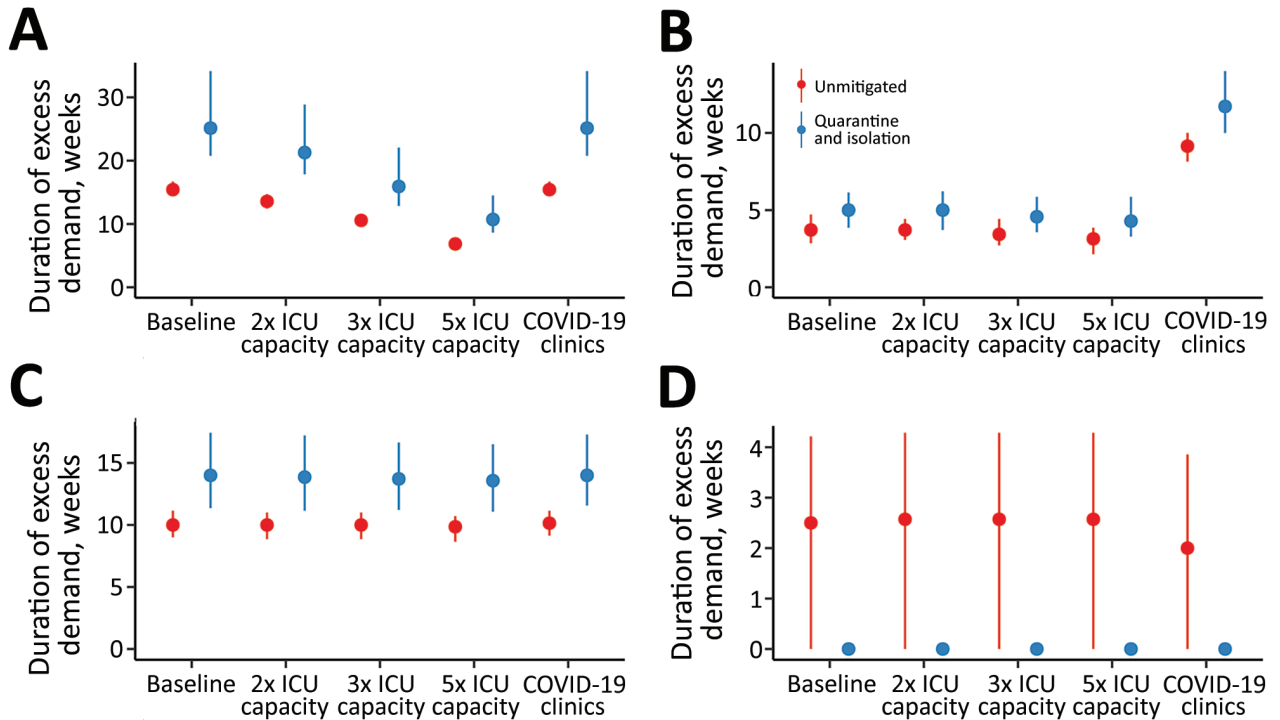
**Clinical Pathways Model**

At baseline of our clinical pathways model, we assume that half of available consulting and admission capacity across all healthcare sectors and services is available to COVID-19 patients. Mild cases are seen at primary care until capacity is exceeded. Severe cases access the hospital system through an ED and are triaged to a ward or ICU bed, if

available, according to need. Requirements for critical care are assumed to increase steeply with age with the consequence that  $\geq 60\%$  of all infections requiring ICU admission occur in persons  $\geq 70$  years of age (Table 2). As ward beds reach capacity, the ability of EDs to adequately assess patients is reduced because of bed block, meaning that not all patients who need care are medically assessed, although some will still be able to access primary care. We assume that secondary infections are not affected by a person’s access to clinical care. The model allows for repeat patient visits within and between primary care and hospital services, and progression from ward to intensive care, with length of stay (Figure 1; Table 2). The model structure and assumptions are based on publicly



**Figure 2.** Estimated daily incidence of ICU admission demand per 1 million population during coronavirus disease (COVID-19) epidemic across all age groups, Australia. A) Demand during an unmitigated COVID-19 epidemic. B) COVID-19 epidemic mitigated by case-targeted public health measures. Lines represent single simulations based on median (red), 5th percentile (blue), or 95th percentile (green) final epidemic size. Of note, the more severe epidemic is more delayed by public health interventions due to a higher case proportion seeking medical attention. In a milder event, persons with non-medical seeking cases will continue to transmit in the community. This finding is contingent on the public health response capacity. ICU, intensive care unit.



**Figure 3.** Estimated duration of excess demand for healthcare sector services during COVID-19 epidemic, Australia. The graphs compare exceedance for COVID-19 admissions for A) ICU beds; B) hospital ward beds; C) emergency departments; and D) general practitioner services at baseline, 2x, 3x, and 5x ICU capacity. The COVID-19 clinics scenario reflects an alternative triage pathway and baseline capacity. Red denotes unmitigated scenarios with no public health interventions in place; blue denotes the mitigated scenarios with quarantine and isolation in place. Dots denote the median; lines range from 5th–95th percentiles of simulations. COVID-19, coronavirus disease; ICU, intensive care unit.

available data on the healthcare system of Australia and expert elicitation (Appendix).

**Critical Care Capacity Expansion**

The baseline assumption in our model was that half of currently available ICU beds would be available to COVID-19 patients. We considered 3 capacity expansion scenarios, assuming routine models of care for patient triage and assessment within the hospital system: total ICU capacity expansion to 150% of baseline, doubling the number of beds available to treat COVID-19 patients (2x ICU capacity); total ICU capacity expansion to 200% of baseline, tripling the number of beds available to treat COVID-19 patients (3x ICU capacity); or total ICU capacity expansion to 300% of baseline, increasing by 5-fold the number of beds available to treat COVID-19 patients (5x ICU capacity).

We also considered a theoretical alternative clinical pathway, COVID-19 clinics, which had constraints on bed numbers but double the capacity to assess severe cases in hospitals. The purpose of including this pathway was to reveal unmet clinical needs arising when bed block constrains ED triage capacity, potentially preventing needed admissions to the ICU.

**Social Distancing Interventions**

Broad -based social distancing measures overcome ongoing opportunities for transmission arising from imperfect ascertainment of all cases and contacts, and from presymptomatic and asymptomatic persons. In settings where nonpharmaceutical social interventions have been applied, associated case-targeted measures also have been in place, making the effectiveness of each difficult to quantify (19). Data from Hong Kong showing a reduction in influenza incidence arising from a combination of distancing measures introduced in response to COVID-19 provides good evidence of generalized transmission reduction (20). However, the relative quantitative contributions of different interventions, such as canceling mass gatherings, working remotely, closing schools, and ceasing nonessential services, cannot be differentiated reliably at this time (18).

Therefore, we focused on the overall objective of distancing, which is to reduce the reproduction number. We modeled the effect of constraining spread by 25% and 33%, overlaid on existing case-targeted interventions, which is consistent with observed impacts of combined measures less restrictive than

total lockdown (18). These reductions in transmission equated to input reproduction numbers of 1.90 at 25% and 1.69 at 33%; the effective reproduction number in each scenario further was reduced by quarantine and isolation measures, which limit spread of established infection.

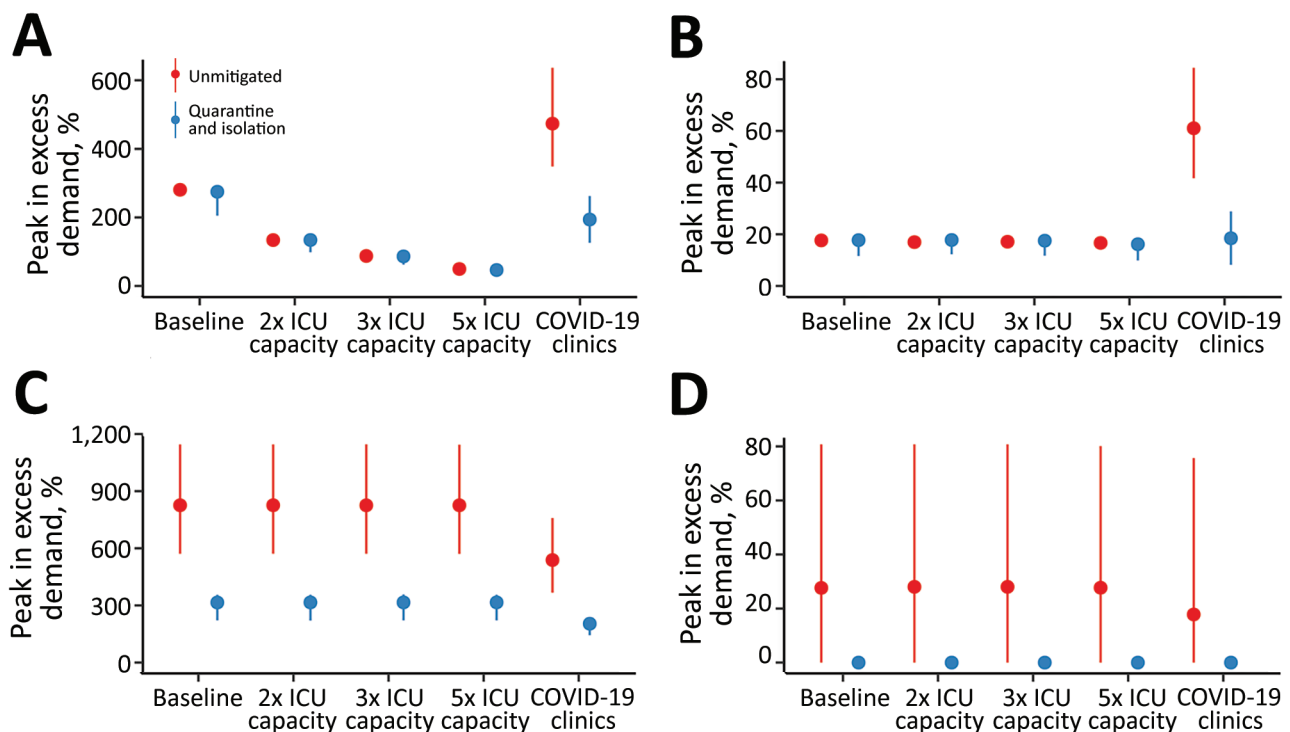
## Results

According to our model, an unmitigated COVID-19 epidemic would dramatically exceed the capacity of the health system of Australia over a prolonged period (Figure 2). Case isolation and contact quarantine applied at the same level of effective coverage throughout the epidemic have the potential to substantially reduce transmission. By flattening the curve, these measures produce a prolonged epidemic with lower peak incidence and fewer overall infections (Figure 2). Epidemic scenarios with higher assumed severity, such as a 95th percentile case, are more effectively delayed by these public health measures than less severe scenarios, such as a 50th percentile case, because a higher proportion of all cases are seen by health services and can be identified for isolation and contact tracing. In a mitigated epidemic, overall use of

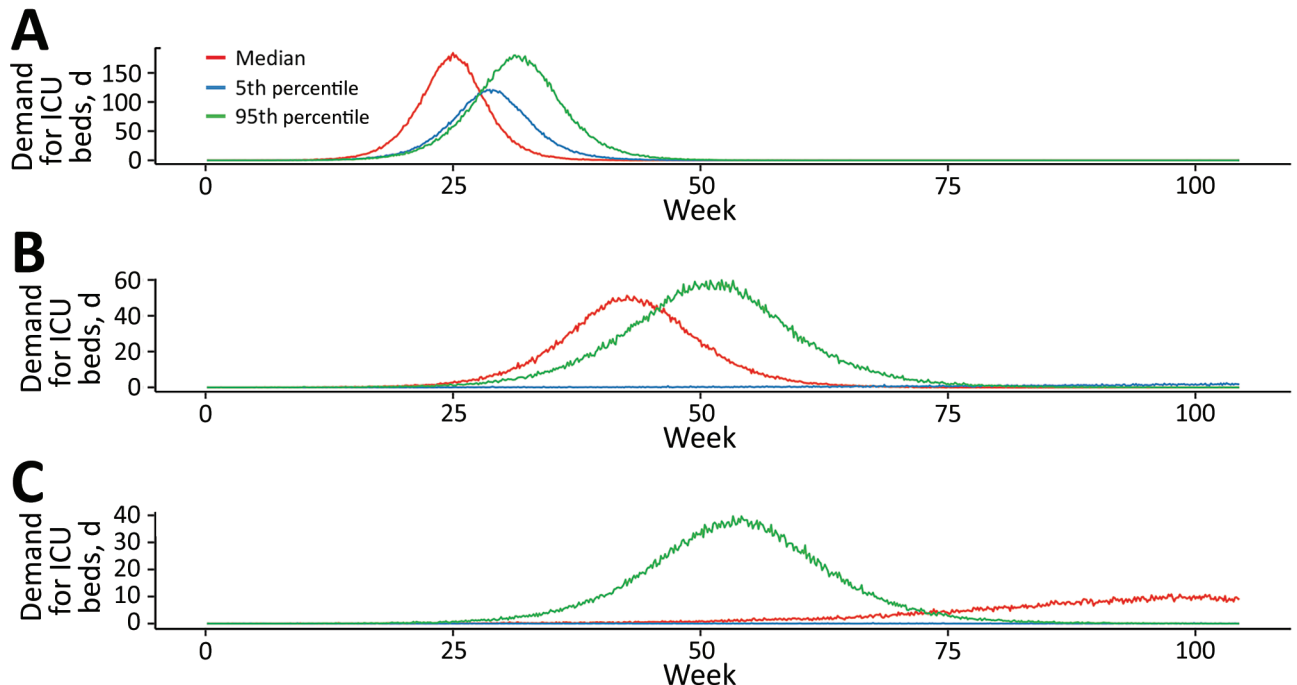
the health system is increased because more patients are able to access needed care over the extended epidemic duration (Appendix Figure 3, panel A).

Increasing the number of ICU beds available to patients with COVID-19 reduces the time over which ICU capacity is anticipated to be exceeded, potentially by more than half (Figure 3). The duration of exceedance for each capacity scenario is increased by quarantine and isolation because the overall epidemic is longer (Figure 3). During the period of exceedance, a degree of unmet need remains, even for the mitigated scenario (Figure 4). A 5-fold increase in the number of ICU beds available to patients with COVID-19 dramatically reduces the period and peak of excess demand (Figures 3, 4).

These figures do not accurately reflect the true requirement for services, however, because blocks in assessment pathways resulting from ED and ward overload are an upstream constraint on incident ICU admissions. The alternative triage scenario, the COVID-19 clinic, reveals a high level of unmet clinical need for both ward and critical care beds given baseline bed capacity (Figures 3, 4). Case-targeted measures overcame this limitation, to some extent, and



**Figure 4.** Estimated peak excess demand for healthcare sector services, by percentage, during the COVID-19 epidemic, Australia. The graphs compare exceedance for COVID-19 admissions for A) ICU beds; B) hospital ward beds; C) emergency departments; and D) general practitioner services at baseline, 2x, 3x, and 5x ICU capacity. The COVID-19 clinics scenario reflects an alternative triage pathway and baseline capacity. Red denotes unmitigated scenarios with no public health interventions in place; blue denotes the mitigated scenarios with quarantine and isolation in place. Dots denote the median; lines range from 5th–95th percentiles of simulations. COVID-19, coronavirus disease; ICU, intensive care unit.



**Figure 5.** Estimated daily incident ICU admission demand per million population during coronavirus disease (COVID-19) epidemic, Australia. Comparison of mitigation achieved by A) quarantine and isolation alone; B) a further 25% mitigation due to social distancing; and C) a 33% mitigation. Lines represent single simulations based on median (red), 5th percentile (blue), or 95th percentile (green) parameter assumptions. ICU, intensive care unit.

effectively improved overall access to care (Figures 3, 4). Overall, if ICU beds available to COVID-19 patients are doubled, 10%–30% of those who require critical care receive it. The proportion rises to  $\geq 20\%$ –40% if capacity increases by 5-fold (Appendix Figure 3). These figures are quantified as total excess demand per million over the course of the epidemic (Appendix Figure 4).

Our simulated scenarios show that case isolation and contact quarantine alone will be insufficient to keep clinical requirements of COVID-19 cases within plausibly achievable expansion of health system capacity, even if very high and likely unrealistic levels of case finding can be maintained. We therefore explored the effects of additional social distancing measures that reduced input reproduction numbers by 25% and 33% on ICU requirements in relation to the same clinical care capacity constraints (Figure 5). Simulations assume ongoing application of measures of fixed effectiveness, which is also unlikely to be consistently achievable over an extended duration.

The overlay of distancing measures, applied from the initial stages of the epidemic and maintained throughout, suppresses epidemic growth to a level that is within the range of plausible ICU capacity expansion. The duration of ICU exceedance remains long in the 25% case (Figure 6), but this overflow oc-

curs to a far lesser degree than following case-targeted strategies only (Figure 7). As anticipated, a 33% reduction in transmission achieves greater benefits. Of note, pressure on ED consultations and ward beds also is eased substantially in these scenarios, maintaining capacity along the full pathway of care. As a result, the proportion of critical cases that can access care is greatly increased. Transmission reduction of 33% makes treatment for all cases achievable in most simulations if 3- to 5-fold ICU bed capacity can be achieved (Appendix Figure 3, panel B). This improvement is reflected in a large reduction in unmet need (Appendix Figure 4, panel B).

## Discussion

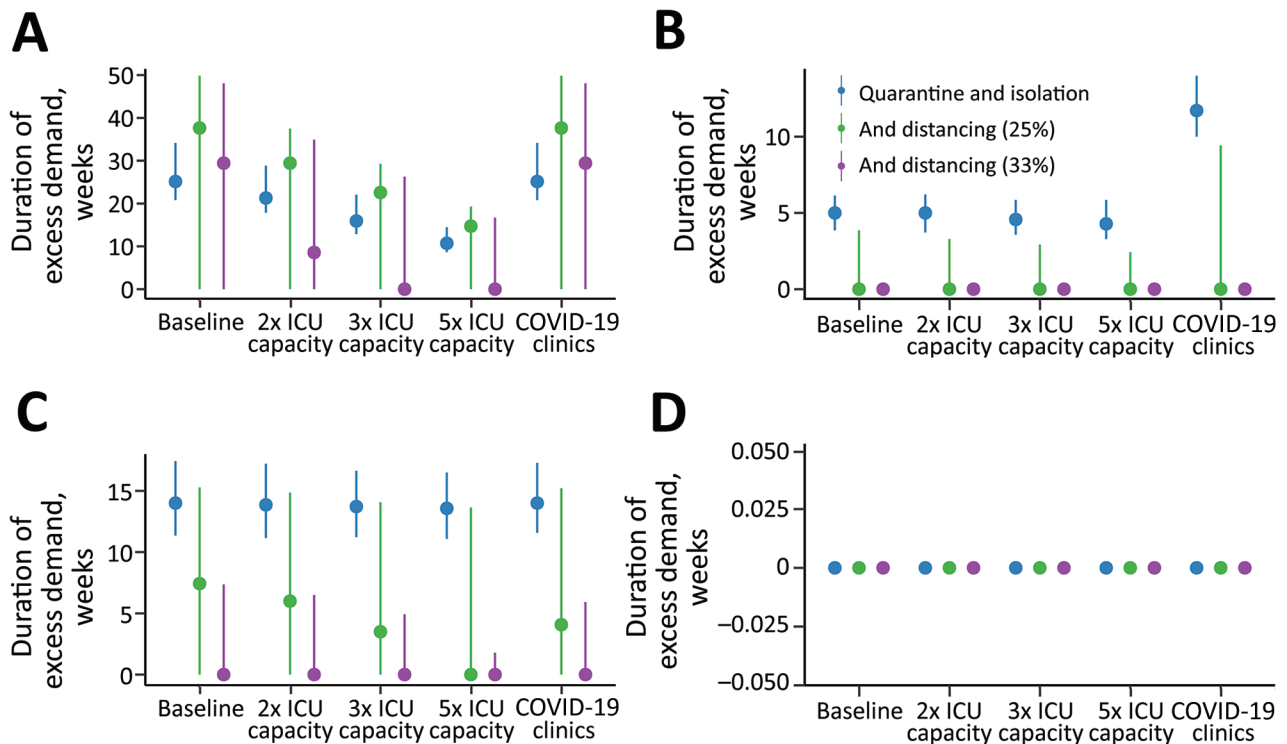
This modeling study shows that an unmitigated COVID-19 epidemic would rapidly overwhelm Australia's health sector capacity. Case-targeted measures including isolation of those known to be infected, and quarantine of their close contacts, must remain an ongoing cornerstone of the public health response. These interventions effectively reduce transmission but are unlikely to be maintained throughout the epidemic course at the high coverage modeled here. As public health response capacity is exceeded, greater constraint of disease spread will be essential to ensure that feasible levels of expansion in available health-

care can maintain ongoing system functions, including care of COVID-19 patients. Broader based social and physical distancing measures reduce the number of potential contacts made by each case, minimizing public health workload and supporting sustainable case-targeted disease control efforts.

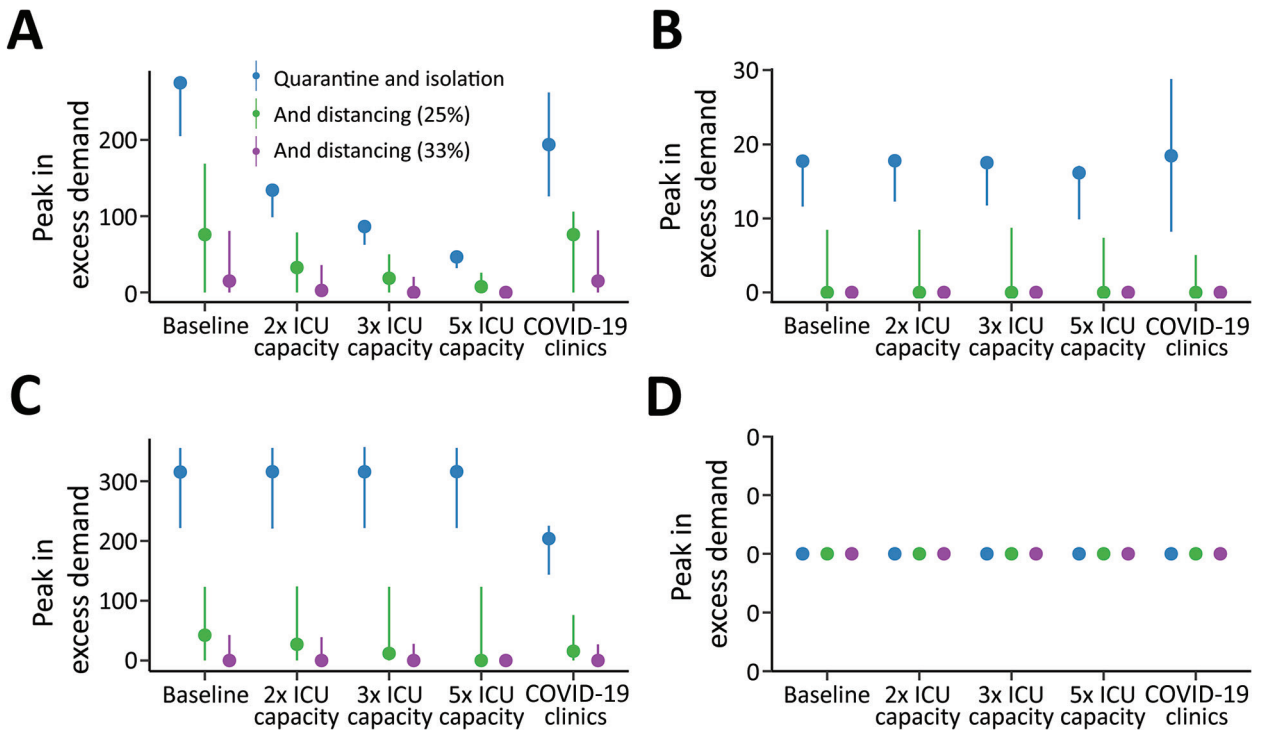
Our findings are consistent with a recently published model (21) that relates the clinical burden of COVID-19 cases to global health sector capacity, characterized at a high level. In unmitigated epidemics, demand rapidly outstrips supply, even in high-income settings, by a factor of 7 (21). Because hospital bed capacity is strongly correlated with income, this factor is greatly increased in low- and middle-income countries where underlying health status likely is poorer (21). Globally, marked variability in the definition of intensive care is observed, even in high-income countries where the descriptor covers many levels of ventilatory and other support. We concur with our conclusion that social distancing measures to suppress disease are required to save lives. In addition, we acknowledge that the marked social and

economic consequences of such measures will limit their ongoing application, particularly in the settings where health systems are least able to cope with disease burden (21).

Much attention has been focused on expansion of available ICU beds per se, but our clinical model reveals that critical care admissions are further limited by the ability to adequately assess patients during times of system stress. In line with model recommendations, Australia, along with other countries, has implemented COVID-19 clinics as an initial assessment pathway to reduce impacts on primary care and ED services (22). Such facilities have additional benefits of ensuring appropriate testing, aligning local case definitions, and reducing the overall consumption of personal protective equipment by cohorting likely infectious patients. Evidence of bottlenecks as the epidemic progresses indicates that other measures to improve patient flows also should be considered, such as overflow expansion in EDs, encouraging and supporting home-based care, or early discharge to supported isolation facilities.



**Figure 6.** Estimated duration of excess demand for healthcare sector services compared with quarantine and isolation scenarios during the COVID-19 epidemic, Australia. The graphs compare exceedance for COVID-19 admissions for A) ICU beds; B) hospital ward beds; C) emergency departments; and D) general practitioner services at baseline, 2x, 3x, and 5x ICU capacity. Blue lines indicate quarantine and isolation only scenarios; green lines indicate overlaid social distancing measures that reduce transmission by an additional 25%; and purple lines indicate overlaid social distancing measures that reduce transmission by an additional 33%. The COVID-19 clinics scenario reflects an alternative triage pathway, and baseline capacity. Dots denote the median; lines range from 5th–95th percentiles of simulations. COVID-19, coronavirus disease; ICU, intensive care unit.



**Figure 7.** Estimated peak excess demand for healthcare sector services, expressed as percent available capacity, compared with quarantine and isolation scenarios during the COVID-19 epidemic, Australia. The graphs compare exceedance for COVID-19 admissions for A) ICU beds; B) hospital ward beds; C) emergency departments; and D) general practitioner services at baseline, 2x, 3x, and 5x ICU capacity. Blue lines indicate quarantine and isolation only scenarios; green lines indicate overlaid social distancing measures that reduce transmission by an additional 25%; and purple lines indicate overlaid social distancing measures that reduce transmission by an additional 33%. The COVID-19 clinics scenario reflects an alternative triage pathway, and baseline capacity. Dots denote the median; lines range from 5th–95th percentiles of simulations. COVID-19, coronavirus disease; ICU, intensive care unit.

Quantitative findings from our model are limited by ongoing uncertainties about the true disease pyramid for COVID-19 and a lack of nuanced information about determinants of severe disease, which we represented by age as a best proxy. The clinical pathways model assumes that half of available bed capacity is available for patients with the disease but does not anticipate the seasonal surge in influenza admissions that might be overlaid with the epidemic peak, although even in our most recent severe season, 2017, only 6% of hospital beds were occupied by influenza cases (23). Available beds will likely be increased by other factors, such as secondary reductions in all respiratory infections and road trauma resulting from social restrictions, and purposive decisions to cancel nonessential surgery. Of note, we did not consider healthcare worker absenteeism due to illness, caregiving responsibilities, or burnout, all of which are anticipated challenges over a very prolonged epidemic accompanied by marked social disruption. We also cannot account for shortages in critical medical supplies because the true extent of these and their likely future impacts on service provision are currently unknown.

Our model indicates that a combination of case-targeted and social measures will need to be applied over an extended period to reduce the rate of epidemic growth. In reality, the stringency of imposed controls, their public acceptability, and compliance, likely will all vary over time. In Australia, compliance with isolation and self-quarantining was largely on the basis of trust in the early response during February–March, but active monitoring and enforcement of these public health measures is now occurring in many jurisdictions. Hong Kong and Singapore initiated electronic monitoring technologies from the outset to track the location of persons and enforce compliance (24). Proxy indicators of compliance, such as transport and mobile phone data, have informed understanding of the effect of social and movement restrictions on mobility and behavior in other settings (19), and will be further investigated in the context of Australia.

The effectiveness of multiple distancing measures, including lockdown, has been demonstrated in Europe, but the contributions of individual measures cannot yet be reliably differentiated (18). The



effect of local measures to curb transmission will be estimated from real time data on epidemic growth in Australia, on the basis of multiple epidemiologic and clinical data streams. Estimates of the local effective reproduction number will enable forecasting of epidemic trajectories (25) to be fed into our analysis pathway. Anticipated case numbers will be used to assess the ability to remain within health system capacity represented by the clinical pathways model, given current levels of social intervention. Such evidence will support strengthening and, when appropriate, cautious relaxation of distancing measures. Further work will examine the effects of varying the intensity of measures over time, to inform the necessary conditions that would enable exit strategies from current stringent lockdown conditions to ensure maintenance of social and economic functioning over an extended time.

All these strategies, which combine to flatten the curve, will buy time for further health system strengthening and sourcing of needed supplies. Protecting the health and wellbeing of healthcare workers will be essential to ensure ongoing service provision. ICU capacity will need to be increased several-fold in anticipation of the looming rise in cases.

Multiple challenges must be overcome along the path to delivering safe and effective COVID-19 vaccines, and the timeframe for availability is highly uncertain (26). The search for effective therapies continues. Therefore, reducing COVID-19 illness and death relies on broadly applied public health measures to interrupt overall transmission, protect vulnerable groups, and maintain and strengthen the capacity of healthcare systems and workers to manage cases.

This work was directly funded by the Australian Government Department of Health. R.M. is supported by 2 National Health and Medical Research Council (NHMRC) Centres of Research Excellence, the Australian Partnership for Preparedness Research on Infectious Disease Emergencies (APPRISE; grant no. GNT1116530), and Supporting Participatory Evidence use for the Control of Transmissible Diseases in our Region Using Modelling (SPECTRUM; grant no. GNT1170960). J.M. is supported by a NHMRC Principal Research Fellowship (grant no. GNT1117140).

### About the Author

Dr. Moss is a senior research fellow at the Melbourne School of Population and Global Health, The University of Melbourne. His research interests include near-real-time forecasting of epidemics and informing recommendations to reduce the burden and impact of infectious diseases.

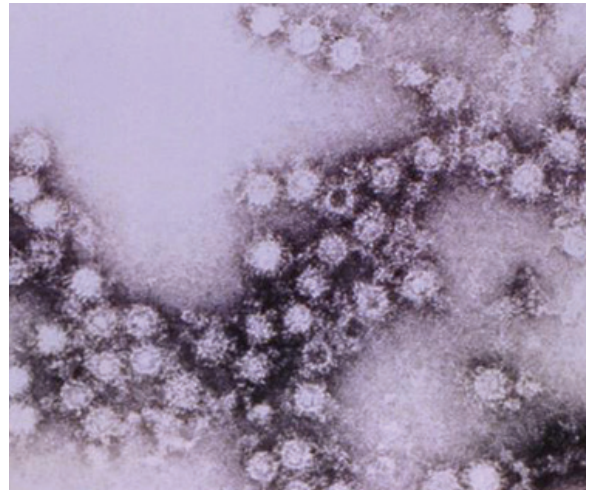
### References

1. World Health Organization. Coronavirus disease (COVID-2019) weekly epidemiological update 21 Sep 2020 [cited 24 Sep 2020]. <https://www.who.int/docs/default-source/coronaviruse/situation-reports/20200921-weekly-epi-update-6.pdf>
2. Wu Z, McGoogan JM. Characteristics of and important lessons from the coronavirus disease 2019 (COVID-19) outbreak in China: summary of a report of 72,314 cases from the Chinese Center for Disease Control and Prevention. *JAMA*. 2020;323:1239. <https://doi.org/10.1001/jama.2020.2648>
3. Chen N, Zhou M, Dong X, Qu J, Gong F, Han Y, et al. Epidemiological and clinical characteristics of 99 cases of 2019 novel coronavirus pneumonia in Wuhan, China: a descriptive study. *Lancet*. 2020;395:507–13. [https://doi.org/10.1016/S0140-6736\(20\)30211-7](https://doi.org/10.1016/S0140-6736(20)30211-7)
4. Remuzzi A, Remuzzi G. COVID-19 and Italy: what next? *Lancet*. 2020;395:1225–8. [https://doi.org/10.1016/S0140-6736\(20\)30627-9](https://doi.org/10.1016/S0140-6736(20)30627-9)
5. Emanuel EJ, Persad G, Upshur R, Thome B, Parker M, Glickman A, et al. Fair Allocation of Scarce Medical Resources in the Time of Covid-19. *N Engl J Med*. 2020;382:2049–55. <https://doi.org/10.1056/NEJMs2005114>
6. Australian Government Department of Health. Australian health management plan for pandemic influenza, 2019 [cited 2020 May 24]. <https://www1.health.gov.au/internet/main/publishing.nsf/Content/ohp-ahmppi.htm>
7. Australian Government Department of Health. Australian health sector emergency response plan for novel coronavirus (COVID-19), 2020 [cited 2020 May 24]. <https://www.health.gov.au/resources/publications/australian-health-sector-emergency-response-plan-for-novel-coronavirus-covid-19>
8. McCaw JM, Glass K, Mercer GN, McVernon J. Pandemic controllability: a concept to guide a proportionate and flexible operational response to future influenza pandemics. *J Public Health (Oxf)*. 2014;36:5–12. <https://doi.org/10.1093/pubmed/ftd058>
9. Australian Government Department of Health. Coronavirus (COVID-19) current situation and case numbers [cited 2020 Apr 14]. <https://www.health.gov.au/news/health-alerts/novel-coronavirus-2019-ncov-health-alert/coronavirus-covid-19-current-situation-and-case-numbers>
10. Moss R, McCaw JM, Cheng AC, Hurt AC, McVernon J. Reducing disease burden in an influenza pandemic by targeted delivery of neuraminidase inhibitors: mathematical models in the Australian context. *BMC Infect Dis*. 2016;16:552. <https://doi.org/10.1186/s12879-016-1866-7>
11. Wu JT, Leung K, Leung GM. Nowcasting and forecasting the potential domestic and international spread of the 2019-nCoV outbreak originating in Wuhan, China: a modelling study. *Lancet*. 2020;395:689–97. [https://doi.org/10.1016/S0140-6736\(20\)30260-9](https://doi.org/10.1016/S0140-6736(20)30260-9)
12. Li Q, Guan X, Wu P, Wang X, Zhou L, Tong Y, et al. Early transmission dynamics in Wuhan, China, of novel coronavirus-infected pneumonia. *N Engl J Med*. 2020;382:1199–207. <https://doi.org/10.1056/NEJMoa2001316>
13. Lauer SA, Grantz KH, Bi Q, Jones FK, Zheng Q, Meredith HR, et al. The incubation period of coronavirus disease 2019 (COVID-19) from publicly reported confirmed cases: estimation and application. *Ann Intern Med*. 2020;172:577–82. <https://doi.org/10.7326/M20-0504>
14. Ganyani T, Kremer C, Chen D, Torneri A, Faes C, Wallinga J, et al. Estimating the generation interval for COVID-19 based on symptom onset data. *Euro Surveill*. 2020;25:2000257. <https://doi.org/10.2807/1560-7917.ES.2020.25.17.2000257>

15. Tindale L, Coombe M, Stockdale J, Garlock E, Lau W, Saraswat M, et al. Transmission interval estimates suggest pre-symptomatic spread of COVID-19. *Elife*. 2020;9:e57149. <https://doi.org/10.7554/eLife.57149>
16. Intensive Care National Audit and Research Centre. INRC Case Mix Programme Database, Report on 775 patients critically ill with COVID-19. 2020 Mar 27 [cited 2020 Apr 14]. <https://www.icnarc.org/About/Latest-News/2020/03/27/Report-On-775-Patients-Critically-Ill-With-Covid-19>
17. COVID-19 Task Force of the Department of Infectious Diseases and Computer Service, Higher Institute of Health, Italy. Epidemiology of COVID-19, 2020 Mar 26 [in Italian] [cited 2020 Apr 14]. <https://www.carditalia.com/epidemia-covid-19-aggiornamento-nazionale-iss-26-marzo-2020>
18. Ferguson N, Laydon D, Nedjati-Gilani G, Imai N, Ainslie K, Baguelin M, et al.; Imperial College COVID-19 Response Team. Report 9: impact of non-pharmaceutical interventions (NPIs) to reduce COVID-19 mortality and healthcare demand. Imperial College London; 2020 Mar 16. <https://doi.org/10.25561/77482>
19. Lai S, Ruktanonchai N, Zhou L, Prosper O, Luo W, Floyd J, et al. Effect of non-pharmaceutical interventions for containing the COVID-19 outbreak. *Nature*. 2020;585:410–3. <https://doi.org/10.1038/s41586-020-2293-x>
20. Cowling B, Ali S, Ng T, Tsang T, Li J, Fong M, et al. Impact assessment of non-pharmaceutical interventions against COVID-19 and influenza in Hong Kong: an observational study. *Lancet Public Health*. 2020;5:e279–88. [https://doi.org/10.1016/S2468-2667\(20\)30090-6](https://doi.org/10.1016/S2468-2667(20)30090-6)
21. Walker P, Whittaker C, Watson O, Baguelin M, Ainslie K, Bhatia S, et al.; WHO Collaborating Centre for Infectious Disease Modelling, MRC Centre for Global Infectious Disease Analysis, Abdul Latif Jameel Institute for Disease and Emergency Analytics. The global impact of COVID-19 and strategies for mitigation and suppression. Imperial College London; 2020 Mar 26. <https://doi.org/10.25561/77735>
22. Zhang J, Zhou L, Yang Y, Peng W, Wang W, Chen X. Therapeutic and triage strategies for 2019 novel coronavirus disease in fever clinics. *Lancet Respir Med*. 2020;8:e11–2. [https://doi.org/10.1016/S2213-2600\(20\)30071-0](https://doi.org/10.1016/S2213-2600(20)30071-0)
23. Cheng AC, Holmes M, Dwyer DE, Senanayake S, Cooley L, Irving LB, et al. Influenza epidemiology in patients admitted to sentinel Australian hospitals in 2017: the Influenza Complications Alert Network (FluCAN). *Commun Dis Intell*. 2018;2019:43. <https://doi.org/10.33321/cdi.2019.43.39>
24. Legido-Quigley H, Asgari N, Teo YY, Leung GM, Oshitani H, Fukuda K, et al. Are high-performing health systems resilient against the COVID-19 epidemic? *Lancet*. 2020;395:848–50. [https://doi.org/10.1016/S0140-6736\(20\)30551-1](https://doi.org/10.1016/S0140-6736(20)30551-1)
25. Moss R, Fielding JE, Franklin LJ, Stephens N, McVernon J, Dawson P, et al. Epidemic forecasts as a tool for public health: interpretation and (re)calibration. *Aust N Z J Public Health*. 2018;42:69–76. <https://doi.org/10.1111/1753-6405.12750>
26. Lurie N, Saville M, Hatchett R, Halton J. Developing Covid-19 vaccines at pandemic speed. *N Engl J Med*. 2020;382:1969–73. <https://doi.org/10.1056/NEJMp2005630>

Address for correspondence: Jodie McVernon, Professor and Director of Doherty Epidemiology, Victorian Infectious Diseases Laboratory Epidemiology Unit at The Peter Doherty Institute for Infection and Immunity, The University of Melbourne and Royal Melbourne Hospital, 792 Elizabeth St, Melbourne, VIC 3000, Australia; email: [j.mcvernon@unimelb.edu.au](mailto:j.mcvernon@unimelb.edu.au)

## EID Podcast Enterovirus D68 and Acute Flaccid Myelitis, 2020



Around 2014, a mysterious, polio-like illness emerged in California and Colorado. Acute flaccid myelitis (AFM) primarily infects children, and if untreated, can lead to paralysis and respiratory failure. Despite extensive surveillance and research campaigns, the true cause of this debilitating disease remains unknown.

New research has shed light on a possible connection between AFM and a pathogen called enterovirus D68.

In this EID podcast, Dr. Sarah Kidd, a medical epidemiologist at CDC, and Sarah Gregory discuss what is known—and unknown—about AFM.

**Visit our website to listen:**  
<https://go.usa.gov/x7CkY>

**EMERGING  
INFECTIOUS DISEASES®**

# Coronavirus Disease Model to Inform Transmission Reducing Measures and Health System Preparedness, Australia

## Appendix

### Model Description

#### 1. Epidemic Model Description

The model structure is shown in Appendix Figure 1. Model compartments are described in Appendix Table 1, model parameters are defined in Appendix Table 2, and population sub-groups are listed in Appendix Table 3.

#### 2. Epidemic Scenarios

The compartmental model characterizing epidemic dynamics is defined by the following equations:

$$\begin{aligned} \frac{dS}{dt} &= -\frac{S}{N} \cdot \lambda & [1] \\ \frac{dE_1}{dt} &= \lambda \left( \frac{S}{N} - \rho\Theta_M \right) - \sigma_1 E_1 & [2] \\ \frac{dE_2}{dt} &= \sigma_1 E_1 - \sigma_2 E_2 & [3] \\ \frac{dI_1}{dt} &= \sigma_2 E_2 - \gamma_1 I_1 & [4] \\ \frac{dI_2}{dt} &= \gamma_1 I_1 (1 - \alpha p_M) - \gamma_2 I_2 & [5] \\ \frac{dR}{dt} &= \gamma_2 I_2 & [6] \\ \frac{dM}{dt} &= \gamma_1 I_1 (\alpha p_M) - \gamma_2 M & [7] \\ \frac{dR_M}{dt} &= \gamma_2 M & [8] \end{aligned}$$

$$\alpha = \eta + \alpha_m (1 - \eta) \quad [9]$$

$$\beta = R_0 \times [(\gamma_1)^{-1} + (\gamma_2)^{-1}]^{-1} \quad [10]$$

$$\lambda = \lambda_{\text{imp}} + \beta(I_1 + I_2) + \beta \times (1 - Q_{\text{eff}}) (I_1^q + I_2^q) + \beta \times (1 - M_{\text{eff}}) \times M + \beta_{M/Q} \times M^q \quad [11]$$

$$\beta_{M/Q} = \beta \times [1 - \max(M_{\text{eff}}, Q_{\text{eff}})] \quad [12]$$

$$\frac{dCT_M}{dt} = \kappa \times (\gamma_1 I_1 + \gamma_1^q I_1^q) \times (\alpha \times p_M) - \delta CT_M - \lambda \times \Theta_M \quad [13]$$

$$\frac{dCT_{NM}}{dt} = \kappa \times (\gamma_1 I_1 + \gamma_1^q I_1^q) \times (1 - \alpha \times p_M) - \delta CT_{NM} - \lambda \times \Theta_{NM} \quad [14]$$

$$\Theta_M = \frac{S}{N} \times \frac{CT_M}{CT_M + CT_{NM}} \quad [15]$$

$$\Theta_{NM} = \frac{S}{N} \times \frac{CT_{NM}}{CT_M + CT_{NM}} \quad [16]$$

## 2.1 Transmission assumptions

We based our transmission assumptions on initial estimates of a doubling time of 6.4 days and  $R_0 = 2.68$  from Wuhan (1). In the initial version of this model, we assumed that all transmission occurred following an incubation period of 5.2 days, within a 2-stage infectious period of 7.68 days required to match the doubling time,  $R_0$ , and latent duration assumptions. However, as a result of increasing evidence of the importance of presymptomatic transmission (2,3), we have revised the latent period to 3.2 days to allow for 2 days of presymptomatic transmission. We elected to maintain the overall duration of infection and doubling time, which is consistent with a revised  $R_0 = 2.53$ . The 2-stage latent and infectious periods now have durations of 1.6 days each (latent period), and 4 and 5.68 days, respectively (infectious period). The associated generation interval for this parameterization is 6 days.

## 2.2 Mixing Assumptions

We stratified the Australian population by age (comprising 9 age groups) and by Indigenous status, to report hospitalization and ICU admission rates for each of these groups. We assumed homogeneous mixing across age groups and assumed that 80% of each Indigenous person's contacts were also Indigenous.

## 2.3 Intensive Care Unit (ICU) and Hospitalization Rates

As of February 12, 2020,  $\approx 1,000$  severe cases of COVID-19 had been reported outside Hubei Province, China (4). To establish an overall severe case-rate, we first extracted the number of cases outside Hubei,  $\approx 11,340$  cases reported on February 12, from the descriptive epidemiology publication from the Chinese Center for Disease Control and Prevention (China

CDC) (5), leading to an overall severe case rate of 8.8%. Because severity was not reported by age, we used other sources, in particular the recent Intensive Care National Audit & Research Centre report on 775 ICU admissions in the United Kingdom (6), to establish an appropriate age pattern. In brief, we extracted data on the proportion of ICU admissions by age and gender and then age and gender standardized these by using UK 2018 mid-year population figures (7), under the assumption that infection rates in adults are constant by age  $\leq 70$  years of age. These relative weightings after standardization and averaging over gender are 0.05 in persons 20–29 years of age, 0.19 in those 30–39 years of age, 0.33 in those 40–49 years of age, and 0.64 in those 50–59 years of age, compared with the reference group, persons 60–69 years of age. This enabled us to compute relative likelihoods of ICU admission by age in adults  $\leq 70$  years of age. We noted that male patients were substantially over-represented in this data, as reported in other settings but that substantially fewer persons  $\geq 70$  years of age were seen in healthcare facilities than expected, perhaps reflecting successful mitigation of transmission to these age-groups in the UK. Therefore, to establish appropriate baseline values in 60–69 years of age, 70–79 years of age, and  $\geq 80$  years of age we drew instead on the assumptions in Imperial College Report 9 (8) and then scaled values in younger adults by using the proportions described above. For children, we drew on the EpiCentro report of March 26 (9), in which 0/553 children with data available had been admitted to an ICU. Based on comparisons to notified incidence rates in persons  $> 80$  years of age, cases in persons  $< 20$  in Italy appear  $\geq 30\times$  underreported in comparison to population proportions. Scaling up by  $30\times$  and applying the rule of 3 (10,11), we estimated an upper bound on ICU risk as  $1/5530$  ( $\geq 0.018\%$ ), which we apply conservatively as our estimate in this age group.

To compute hospitalization rates by age, we extracted the age-distribution of cases outside of China from the China CDC report, and applied our ICU rates by age, scaled up by a constant factor to match the overall severe case rate of 8.8% from that setting. This exercise led to our assumption that 29% of hospitalized cases will require ICU care and is approximately equal to the proportion assumed in Imperial College Report 9 (8).

## **2.4 Range of scenarios**

We considered the following 4 scenarios. We provide summary statistics for each scenario in Appendix Table 4. The following assumptions that apply across all 4 scenarios:

- The mean latent period is 3.2 days, the mean infectious period is 9.68 days, and the doubling time is 6.4 days.
- The baseline  $R_0$  is 2.53, and the mean generation time is 6 days.
- Symptom onset occurs 2 days after the onset of infectiousness, so the mean incubation period is 5.2 days.
- Case ascertainment occurs 2 days after symptom onset.
- $\sigma_1 = \sigma_2 = 1.6$  days;  $\gamma_1 = \gamma_1^q = 4.0$  days;  $\gamma_2 = \gamma_2^q = 5.68$  days.
- All presenting cases can be isolated ( $p_M = 1$ ).
- Imported cases arrive from overseas at a fixed, low rate ( $\lambda_{imp} = 10$  cases per week).

The following assumptions differ between the 4 scenarios:

- There is no case isolation, or case isolation reduces transmission by 80% ( $M_{eff} \in \{0,0.8\}$ ) from managed cases in  $M$  and  $M^q$  but has no effect on persons in  $I_1$  or  $I_2$ .
- There is no self-quarantine (e.g., due to lack of contact tracing, or electing not to promote self-quarantine), or 80% of contacts will adhere to self-quarantine ( $\rho \in \{0,0.8\}$ ).
- Self-quarantine halves transmission ( $Q_{eff} = 0.5$ ) from persons in  $I_1^q$  and  $I_2^q$ .
- Physical distancing measures may reduce  $R_0$  by 25% ( $R = 1.8975$ ) or by 33% ( $R = 1.6867$ ). We assumed these measures will be applied *in addition to* self-quarantine and case isolation.

The interventions considered in these scenarios, self-quarantine, case isolation, and physical distancing, are intended to represent broadly effective (but imperfect) public health measures and behavior changes in the population.

### 3. Models of Care

The structure of the clinical pathways model (Appendix Figure 2) is adapted from Moss et al. (12). Some infected persons will require hospitalization (“severe cases”) and among the rest, some will present to outpatient settings (“mild cases”). The proportion of mild cases that

present to hospital EDs rather than to GP clinics in Australia was estimated to be 20%, based on expert consultation. We further assumed that a fraction of the severe cases will present to an outpatient setting early in their clinical course, in advance of requiring hospitalization. We assumed that a fixed fraction of hospitalized cases would require ICU admission. Parameters that govern these flows are listed in Appendix Table 5.

A key assumption of this clinical pathways model is that access to clinical care is independent of the infection process. Whether or not an infected person receives access to clinical care, they will give rise to the same number of secondary cases in the epidemic model. And the number of infected persons who receive clinical care is not related to the number of managed cases in the epidemic model (i.e., those who enter the  $M$  or  $M^q$  compartment). Case-finding and isolation as a public health response is considered separately from access to clinical care. In reality, public health response capacity may also be exceeded.

We assumed that a proportion of infected persons ( $\alpha_s$ ) will require hospitalization, and that this proportion varies by age. The upper bounds for each age group are listed in Appendix Table 3. A further proportion of infected persons ( $\alpha_m$ ) will present to outpatient settings but will not require hospitalization (“mild” cases). We introduce a scaling factor  $\eta$  from which we calculate  $\alpha_s$ , and define the sampling distribution for this mild proportion, as per Moss et al. (12):

$$\eta_{\text{pow}} \sim U(\log_{10} 0.5, \log_{10} 1.0) \quad [17]$$

$$\eta = 10^{\eta_{\text{pow}}} \quad [18]$$

$$\alpha_m = \min(\alpha_m) + [\max(\alpha_m) - \min(\alpha_m)] \times \text{Beta}(\mu = 0.5, \text{Var} = 0.2) \quad [19]$$

$$\min(\alpha_m) = 0.05 + 0.2 \times \frac{\eta - 0.01}{0.99} \quad [20]$$

$$\max(\alpha_m) = 0.15 + 0.6 \times \frac{\eta - 0.01}{0.99} \quad [21]$$

$$\alpha_s = \eta \cdot \text{Pr}(\text{Hosp}|\text{Inf}) \quad [22]$$

$$\alpha = \alpha_s + (1 - \alpha_s) \times \alpha_m \quad [23]$$

The lower and upper bounds for  $\alpha_m$  are both linear functions of  $\eta$ . As the proportion of infected persons who require hospitalization increases, the proportion of infected persons who present to outpatient settings but not require hospitalization will increase, too.

National consultation and admission capacities for each healthcare setting were informed by public reports of healthcare infrastructure of Australia, under the assumption that, in a worst-case scenario,  $\geq 50\%$  of total capacity in each healthcare setting could possibly be devoted to COVID-19 patients (Appendix Table 6). Patients are admitted to general wards with a mean length of stay of 8 days and are admitted to ICUs with a mean length of stay of 10 days. Therefore, the prevalence of cases requiring hospitalization determines the available ward and ICU bed capacities for new admissions. At a jurisdictional level, daily presentations are allocated in proportion to each jurisdiction's resident population. Healthcare capacity is determined by the numbers of fulltime general practitioners (GPs) per jurisdiction, the yearly number of emergency department (ED) visits per jurisdiction, the number of overnight beds available in public hospitals by jurisdiction, and the number of intensive care unit (ICU) beds per jurisdiction, as described in the AIHW report, Hospital Resource 2017–18: Australian Hospital Statistics (13).

When the healthcare setting has insufficient capacity for a person to receive a consultation or to be admitted to hospital, the following steps are applied:

1. Severe cases that cannot receive an ED consultation (or a consultation with an alternate care pathway, if available) are not observed by the healthcare system and are reported as excess demand in this care setting.
2. Mild cases that cannot receive an ED or GP consultation (or a consultation with an alternate care pathway, if available) are not observed by the healthcare system and are reported as excess demand in this care setting.
3. Any severe cases that require ICU admission but cannot be admitted due to a lack of available ICU beds, are considered for admission to a general ward and are reported as excess ICU demand.
4. Any severe cases that cannot be admitted to a general ward due to a lack of available ward beds are observed by the healthcare system and are reported as excess ward demand.



### 3.1 Service Substitution Models

We consider a service-substitution model of care to circumvent EDs as the sole pathway for hospital admission.

#### COVID-19 Clinics for Triage and Hospital Admission

We assume that COVID-19 clinics are staffed by 10% of the GP and ED workforce, and that for each GP or ED consultation lost due to this decrease in staffing, 2 clinic consultations are gained. This is due to the assumption that every clinic consultation is allocated to a potential COVID-19 case, but only 50% of GP and ED consultations may be allocated to potential COVID-19 cases. When COVID-19 clinics are provided, we assumed that 25% of mild cases will use them in lieu of EDs and GPs, and that severe cases place equal demand on EDs and on COVID-19 clinics.

### 3.2 Critical care expansion

Recall that in the base care, COVID-19 patients have access to half of all ICU beds in the healthcare system. We consider three scenarios where ICU bed capacity is expanded:

Moderate: the number of ICU beds available to COVID-19 patients is doubled compared to the base, making 150% of total baseline ICU bed capacity available.

Large: the number of ICU beds available to COVID-19 patients is tripled compared with the base, making 200% of total baseline ICU bed capacity available.

Extreme: the number of ICU beds available to COVID-19 patients is increased 5-fold compared with the base, making 300% of total baseline ICU bed capacity available.

### References

1. Wu JT, Leung K, Leung GM. Nowcasting and forecasting the potential domestic and international spread of the 2019-nCoV outbreak originating in Wuhan, China: a modelling study. *Lancet*. 2020;395:689–97. [PubMed https://doi.org/10.1016/S0140-6736\(20\)30260-9](https://doi.org/10.1016/S0140-6736(20)30260-9)
2. Ganyani T, Kremer C, Chen D, Torneri A, Faes C, Wallinga J, et al. Estimating the generation interval for COVID-19 based on symptom onset data. *Euro Surveill*. 2020;25:2000257. [PubMed https://doi.org/10.2807/1560-7917.ES.2020.25.17.2000257](https://doi.org/10.2807/1560-7917.ES.2020.25.17.2000257)

3. Tindale L, Coombe M, Stockdale J, Garlock E, Lau W, Saraswat M, et al. Transmission interval estimates suggest pre-symptomatic spread of COVID-19. *Elife*. 2020;9:e57149. [PubMed](#)  
<https://doi.org/10.7554/eLife.57149>
4. Chinese Center for Disease Control and Prevention. National Health Commission update; February 13, 2020 [cited 2020 Apr 14]. <http://weekly.chinacdc.cn/news/TrackingtheEpidemic.htm#NHCFeb13>
5. Novel Coronavirus Pneumonia Emergency Response Epidemiology Team. The epidemiological characteristics of an outbreak of 2019 novel coronavirus diseases (COVID-19) in China [in Chinese]. *Zhonghua Liu Xing Bing Xue Za Zhi*. 2020;41:145–51. [PubMed](#)  
<https://doi.org/10.3760/cma.j.issn.0254-6450.2020.02.003>
6. Intensive Care National Audit and Research Centre. INRC Case Mix Programme Database, Report on 775 patients critically ill with COVID-19. 2020 Mar 27 [cited 2020 Apr 14].  
<https://www.icnarc.org/About/Latest-News/2020/03/27/Report-On-775-Patients-Critically-Ill-With-Covid-19>
7. Office for National Statistics. United Kingdom. Population estimates for the UK, England and Wales, Scotland and Northern Ireland: mid-2018. Technical report, 2019 [cited 2020 Apr 14]  
<https://www.ons.gov.uk/peoplepopulationandcommunity/populationandmigration/populationestimates/bulletins/annualmidyearpopulationestimates/mid2018>
8. Ferguson N, Laydon D, Nedjati-Gilani G, Imai N, Ainslie K, Baguelin M, et al.; Imperial College COVID-19 Response Team. Report 9: impact of non-pharmaceutical interventions (NPIs) to reduce COVID-19 mortality and healthcare demand. Imperial College London; 2020 Mar 16.  
<https://doi.org/10.25561/77482>
9. COVID-19 Task Force of the Department of Infectious Diseases and Computer Service, Higher Institute of Health, Italy. Epidemiology of COVID-19, 2020 Mar 26 [in Italian] [cited 2020 Apr 14]. <https://www.carditalia.com/epidemia-covid-19-aggiornamento-nazionale-iss-26-marzo-2020>
10. Eypasch E, Lefering R, C K Kum, and Hans Troidl. Probability of adverse events that have not yet occurred: a statistical reminder. *BMJ*. 1995;311:619–20. [PubMed](#)  
<https://doi.org/10.1136/bmj.311.7005.619>
11. Ludbrook J, Lew MJ. Estimating the risk of rare complications: is the ‘rule of three’ good enough? *ANZ J Surg*. 2009;79:565–70. [PubMed](#) <https://doi.org/10.1111/j.1445-2197.2009.04994.x>
12. Moss R, McCaw JM, Cheng AC, Hurt AC, McVernon J. Reducing disease burden in an influenza pandemic by targeted delivery of neuraminidase inhibitors: mathematical models in the

Australian context. BMC Infect Dis. 2016;16:552. [PubMed https://doi.org/10.1186/s12879-016-1866-7](https://doi.org/10.1186/s12879-016-1866-7)

13. Australian Government; Australian Institute of Health and Welfare. Hospital resources 2017–18: Australian hospital statistics 26 June 2019 [cited 2020 Apr 14]. <https://www.aihw.gov.au/reports/hospitals/hospital-resources-2017-18-ahs>

**Appendix Table 1.** Model compartments for the general population (middle column) and for persons who were quarantined as a result of contact tracing (right column)

Description	General	Quarantined
Susceptible persons	$S$	—
Latent period (first stage)	$E_1$	$E_1^q$
Latent period (second stage)	$E_2$	$E_2^q$
Infectious period (first stage)	$I_1$	$I_1^q$
Infectious period (second stage)	$I_2$	$I_2^q$
Recovered persons	$R$	$R^q$
Managed cases, ascertained upon leaving $I_1$ and less infectious than persons in $I_2$	$M$	$M^q$
Recovered persons that were managed cases	$R$	$R_m^q$
Contacts of unmanaged cases		$CT_{NM}$
Contacts of managed cases, who will enter $E_1^q$ if they become infected		$CT_M$

**Appendix Table 2.** Model parameters

Symbol	Definition
$\sigma_1$	Inverse of first latent period.
$\sigma_2$	Inverse of second latent period.
$\gamma_1$	Inverse of first infectious period.
$\gamma_2$	Inverse of second infectious period.
$\gamma_1^q$	Inverse of first infectious period for quarantined cases.
$\gamma_2^q$	Inverse of second infectious period for quarantined cases.
$\eta$	Scaling factor for hospitalization proportion (“severe”).
$\alpha_m$	Proportion of non-severe persons who present (“mild”).
$\alpha$	Net proportion of persons who present.
$R_0$	The basic reproduction number.
$\lambda$	The net force of infection.
$\lambda_{imp}$	The force of infection from importation (10 exposures per week).
$\beta$	The force of infection exerted by one person.
$\kappa$	The per-person contact rate (20 persons per day).
$\delta$	The duration of quarantine for contacts (14 d).
$p_M$	Probability of presenting cases being effectively managed†.
$Q_{eff}$	The reduction in infectiousness due to quarantine†.
$M_{eff}$	The reduction in infectiousness due to case management†.
$\rho$	The proportion of contacts (of ascertained cases) that will self-quarantine†.

†Key intervention parameters

**Appendix Table 3.** Population groups by age and Indigenous status, showing population sizes, and the probability of requiring hospitalization given infection\*

Age	Indigenous	Non-Indigenous	Pr(Hosp/Inf), %†
0–9	184,560	2,966,400	0.062
10–18	149,040	2,466,480	0.062
19–29	151,440	3,651,120	0.775
30–39	93,360	3,315,360	2.900
40–49	87,360	3,154,560	5.106
50–59	66,960	2,964,720	9.895
60–69	38,880	2,397,120	15.493
70–79	15,360	1,423,440	35.762
80+	5,280	868,560	65.936

Age	Indigenous	Non-Indigenous	Pr(Hosp/Inf), %†
Demographic breakdown per Australian Bureau of Statistics resident population estimates, catalog number 3238.0.55.001, June 2016. The values of Pr(Hosp/Inf) are upper bounds; we defined the lower bounds to be half of these listed values.			
†Probability of hospitalization given infection, by age (expressed as percentage).			

**Table 4.** Key epidemic characteristics for each of the scenarios described above\*

$R_t$	Intervention	Attack Rate, %	Clinical AR, %	Hospital AR, %	Peak week
2.53	Unmitigated	89.1 (89.1–89.1)	37.9 (25.0–53.4)	5.4 (4.0–7.4)	18 (18–19)
2.53	Quarantine + isolation	67.5 (51.4–76.8)	28.6 (21.6–31.2)	4.0 (3.2–5.3)	30 (25–40)
1.90	Quarantine + isolation	37.7 (1.4–54.4)	15.5 (0.9–16.6)	2.2 (0.1–3.2)	58 (41–103)
1.69	Quarantine + isolation	11.6 (0.1–40.8)	5.0 (0.0–11.5)	0.8 (0.0–2.2)	85 (52–104)

\*Median outcomes are reported, with 5th and 95th percentiles shown below in brackets. AR, attack rate.

†The effective reproduction number in the absence of self-quarantine and case isolation

**Appendix Table 5.** Parameters that characterize patient flows through the clinical pathways model\*

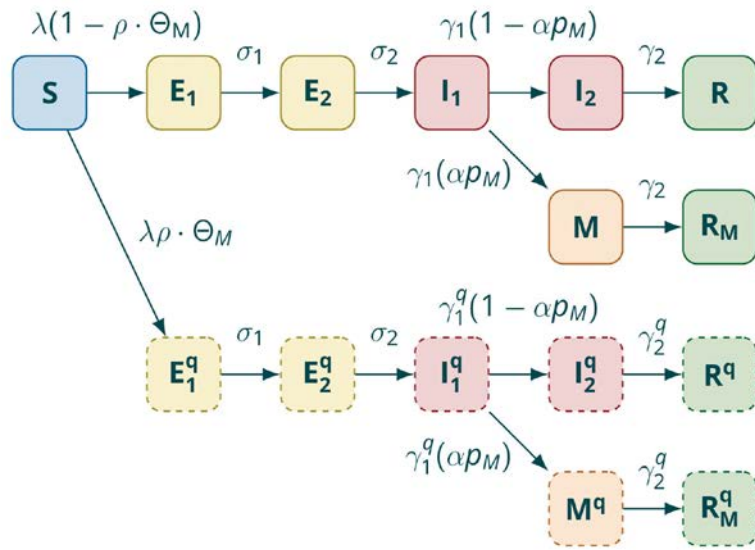
Parameter	Value
Proportion of mild cases that present to GPs	80
Proportion of mild cases that present to EDs	20
Proportion of mild GP cases that revisit EDs	10
Proportion of mild ED cases that revisit GPs	5
Proportion of severe cases that present early	50
Proportion of early severe cases that present to GPs	80
Proportion of early severe cases that present to EDs	20
Proportion of non-early severe cases that present to EDs	100
Proportion of admitted cases that require ICU	29.335
Mean length of stay in ward beds, d	8 d
Mean length of stay in ICU beds, d	10 d
Ward bed availability threshold for reducing ED capacity	20
Minimum ED consultation capacity	10

\*ED, emergency department; GP, general practitioner; ICU, intensive care unit.

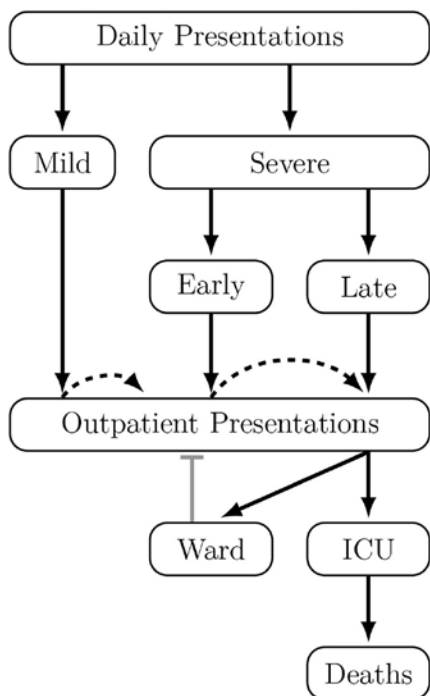
**Appendix Table 6.** Estimated national and per-jurisdiction healthcare capacities, under the assumption that 50% of total capacity in each healthcare setting could possibly be devoted to COVID-19 patients\*

Healthcare resource	National	ACT	NSW	NT	QLD	SA	TAS	VIC	WA
ICU beds	1,114	22	437	11	206	94	25	238	81
Ward beds	25,756	448	8,832	276	5,099	1,915	557	6,158	2,471
ED consultations	10,935	202	3,945	172	2,071	694	222	2,456	1,173
GP consultations	202,999	2,607	66,616	1,582	43,627	14,005	3,935	51,338	19,289

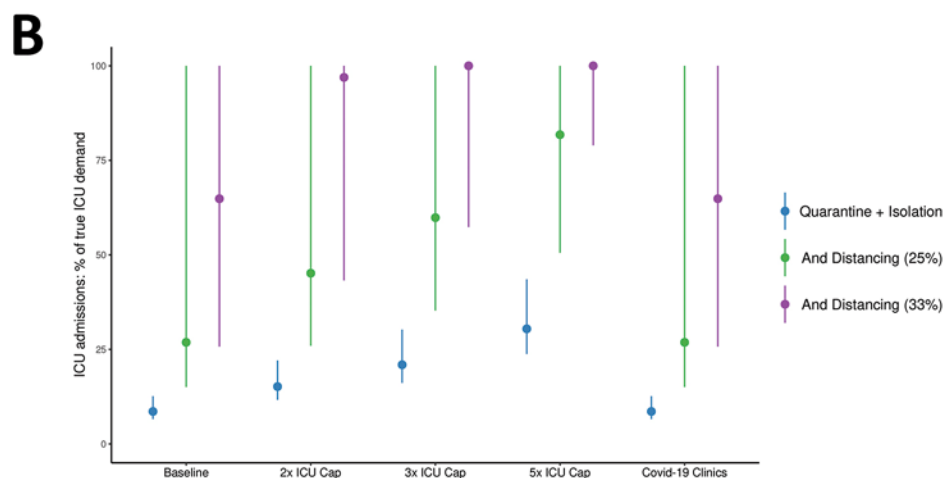
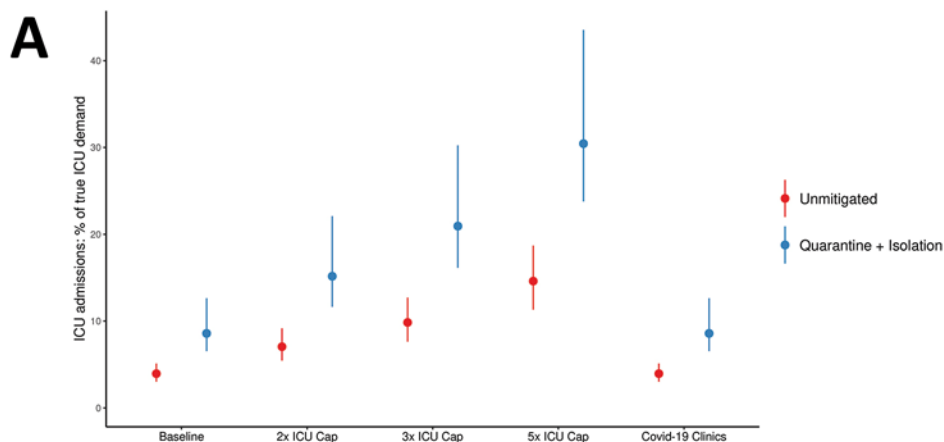
\*ED and GP capacities reflect maximum number of daily consultations. ACT, Australian Capital Territory; ED, emergency department; GP, general practitioner; NSW, New South Wales; NT, Northern Territories; QLD, Queensland; SA, South Australia; TAS, Tasmania; VIC, Victoria; WA, Western Australia.



**Appendix Figure 1.** Model diagram. Some proportion  $p_M$  of presenting cases are ascertained and isolated. Quarantined persons (shown with dashed borders) exert a lesser force of infection than non-quarantined persons.

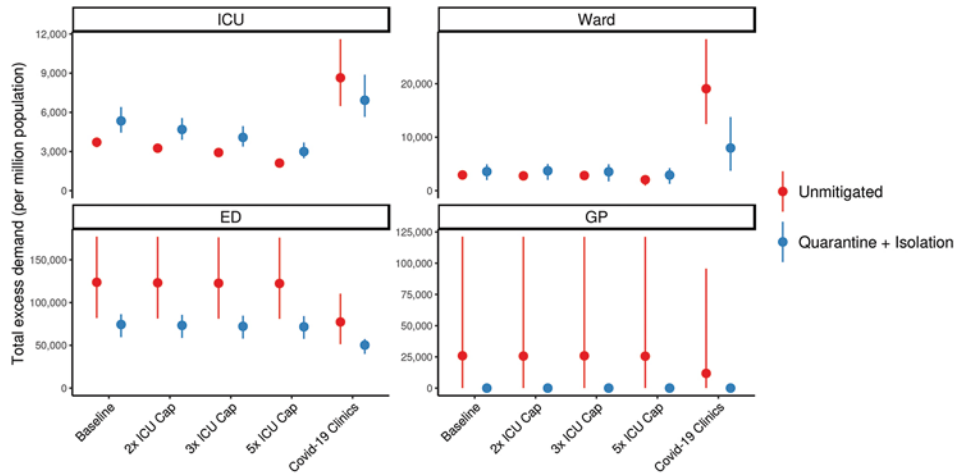


**Appendix Figure 2.** A schematic of the clinical pathways model. Repeat outpatient presentations are shown as dashed arrows. As ward bed occupancy increases, ED consultation capacity decreases (gray bar) and fewer severe cases can be triaged and admitted.

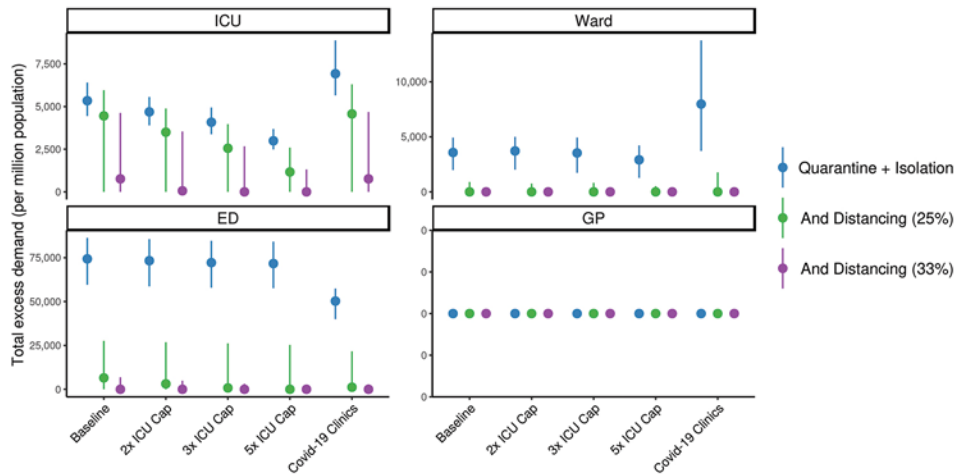


**Appendix Figure 3.** Estimated total intensive care unit (ICU) admissions throughout the course of the coronavirus disease (COVID-19) epidemic, as a percentage of true critical care demand, Australia. Scenarios shown are baseline, 2x, 3x, and 5x times ICU capacity for COVID-19 admissions. The COVID-19 clinics scenario reflects an alternative triage pathway, and baseline capacity. A) Red denotes unmitigated scenarios with no public health interventions in place; blue denotes the mitigated scenarios with quarantine and isolation in place. B) Blue denotes quarantine and isolation only scenarios; green denotes additional overlay of social distancing measures to reduce transmission by 25%; purple denotes additional overlay of social distancing measures to reduce transmission by 33%. Dots denote the median; lines range from 5th–95th percentiles of simulations.

**A**



**B**



**Appendix Figure 4.** Total excess demand for services assessed by standard care pathways. Scenarios compared are baseline, 2x, 3x, and 5x times ICU capacity for COVID-19 admissions, and the alternative triage pathway (against baseline capacity). Dots denote the median; lines range from 5th–95th percentiles of simulations. A) Red denotes unmitigated scenarios; blue denotes quarantine and isolation scenarios. B) Blue denotes quarantine and isolation scenarios; green denotes additional overlay of social distancing measures to reduce transmission by 25%; and purple denotes additional overlay of social distancing measures to reduce transmission by 33%.