

---

# Frequent Genetic Mismatch between Vaccine Strains and Circulating Seasonal Influenza Viruses, Hong Kong, China, 1996–2012

Martin C.W. Chan, Maggie H. Wang, Zigui Chen, David S.C. Hui, Angela K. Kwok, Apple C.M. Yeung, Kun M. Liu, Yun Kit Yeoh, Nelson Lee,<sup>1</sup> Paul K.S. Chan

The World Health Organization selects influenza vaccine compositions biannually to cater to peaks in temperate regions. In tropical and subtropical regions, where influenza seasonality varies and epidemics can occur year-round, the choice of vaccine remains uncertain. Our 17-year molecular epidemiologic survey showed that most influenza A(H3N2) (9/11) and B (6/7) vaccine strains had circulated in East Asia >1 year before inclusion into vaccines. Northern Hemisphere vaccine strains and circulating strains in East Asia were closely matched in 7 (20.6%) of 34 seasons for H3N2 and 5 (14.7%) of 34 seasons for B. Southern Hemisphere vaccines also had a low probability of matching (H3N2, 14.7%; B, 11.1%). Strain drift among seasons was common (H3N2, 41.2%; B, 35.3%), and biannual vaccination strategy (Northern Hemisphere vaccines in November followed by Southern Hemisphere vaccines in May) did not improve matching. East Asia is an important contributor to influenza surveillance but often has mismatch between vaccine and contemporarily circulating strains.

Influenza is a major cause of illness and death worldwide. The human influenza virus spreads rapidly (average reproduction number of 1.28), typically infects 5%–10% of the population during seasonal epidemics, and results in 3–5 million cases of severe acute lower respiratory tract infection and ≈500,000 deaths per year globally (1,2). Continuous evolution of the single-stranded influenza virus results in antigenic drift of its surface proteins hemagglutinin (HA) and neuraminidase (3,4). Antigenic drift occurs on average 2–8 years in response to host immune selection pressure and is most frequently seen in influenza A(H3N2), followed by influenza B and influenza A(H1N1). Antigenic

drift confers the virus an ability to escape immunity induced by previous infection or immunization (5).

Effectiveness of current influenza vaccines is predominantly determined by matching between vaccines and circulating strains (6). To achieve the best possible vaccine matching, the World Health Organization (WHO) has changed its recommended vaccine composition 12 times for influenza A(H3N2), 10 times for influenza B, and 6 times for influenza A(H1N1) since 1998 (7). WHO reviews influenza vaccine composition each February and September to provide timely recommendation for temperate regions of the Northern and Southern Hemispheres, respectively. Tropical and subtropical regions are expected to choose 1 of the 2 recommended vaccine compositions. However, influenza seasonality varies more in the tropics and subtropics, where epidemics can occur year-round. Moreover, a national policy on the choice and timing of vaccination is lacking in many tropical and subtropical countries, where 60% of the world's population resides (8).

We analyzed the 2 most frequently drifting influenza types, A(H3N2) and B, in Hong Kong during 1996–2012 to examine matching between vaccine strains and circulating field viruses to document the challenges faced in this region. We evaluated options on choosing the Northern or Southern Hemisphere vaccine compositions and the strategy of an annual or biannual vaccination.

## Methods

### Study Samples

We conducted a retrospective molecular epidemiologic study to analyze the HA sequences of influenza A(H3N2) and influenza B viruses that circulated during a 17-year period (1996–2012) in Hong Kong, a subtropical city in

---

Author affiliation: The Chinese University of Hong Kong, Hong Kong, China

DOI: <https://doi.org/10.3201/eid2410.180652>

---

<sup>1</sup>Current affiliation: University of Alberta, Edmonton, Alberta, Canada.

East Asia (22°17'7.87"N, 114°9'27.68"E) with a high population density of 57,250 persons/km<sup>2</sup> in the most densely populated district, Kwun Tong (9). Hong Kong is an international hub. As recorded in 2011, Hong Kong received >34 million visitors from neighboring regions, including South and Southeast Asia, Taiwan, mainland China, and Macao, and an average of ≈650,000 cross-boundary trips between Hong Kong and mainland China were recorded daily (10,11). In this study, we used Hong Kong as a proxy to reflect the challenges faced in East Asia.

We focused on influenza A(H3N2) and influenza B, rather than A(H1N1), because changes in vaccine composition were more frequent for the former 2 viruses. Clinical specimens were derived from patients admitted to the Prince of Wales Hospital, which serves 9% (0.6 million) of Hong Kong's population (12). We sequenced an average of 30 influenza A(H3N2) and 30 influenza B clinical samples per year, except for 2009, when influenza A(H1N1)pdm09 predominated. Selection was prioritized for samples collected during different months to reveal the whole annual spectrum of circulating viruses.

#### Identifying Closest Vaccine Strains and Matched Seasons

We identified vaccine strain closest to each circulating virus on the basis of HA sequence analysis. We extracted viral RNA from specimens using the PureLink Viral RNA/DNA Mini kit (Thermo Fisher, Waltham, MA, USA). The full-length influenza A(H3N2) HA encoding region was amplified and Sanger sequenced according to our previously described method (13). Similarly, the full-length influenza B HA encoding region was amplified with primers FLUB-UNI9-HAF1 (5'-AGC AGA AGC AGA GCA TTT TYT AAT ATC-3') and FLUB-HAR1 (5'-ACA AGC AAA CAA GYA CYA CAA YAA AG-3') and Sanger sequenced. We downloaded ancestral influenza A(H3N2) and influenza B HA sequences from GenBank. Information about WHO-recommended vaccine strains and sequences were retrieved from the Influenza Research Database (14). When the recommendation included alternative vaccine strains, each of them was included for analysis.

We conducted neighbor-joining phylogenetic inference on the basis of the HA sequences using MEGA6 (15). Resulting trees were visualized using FigTree version 1.4.2. We then matched each circulating strain to a closest influenza A(H3N2) or influenza B vaccine strain based on pairwise protein sequence distances as calculated by the Poisson model (16). Circulating strains with equal distance to 2 vaccine strains were assigned to the vaccine recommended in an earlier year. Strains with distances >2 times the SD from the mean distance of all strains were regarded as outliers and thus had no closest vaccine strain assigned.

When the circulating viruses and their closest vaccine strain corresponded in time, the season was regarded as matched. On the other hand, when the circulating viruses coincided with vaccine strains from a previous season (e.g., circulating strain from 2012 matching vaccine strain from 2010), the season was regarded as not matched. This matching scheme was based on the rationale that WHO changes the influenza vaccine composition only when substantial antigenic drift has occurred, and suboptimal effectiveness would be expected for the previous vaccine compositions.

#### Seasonality and Protection Period

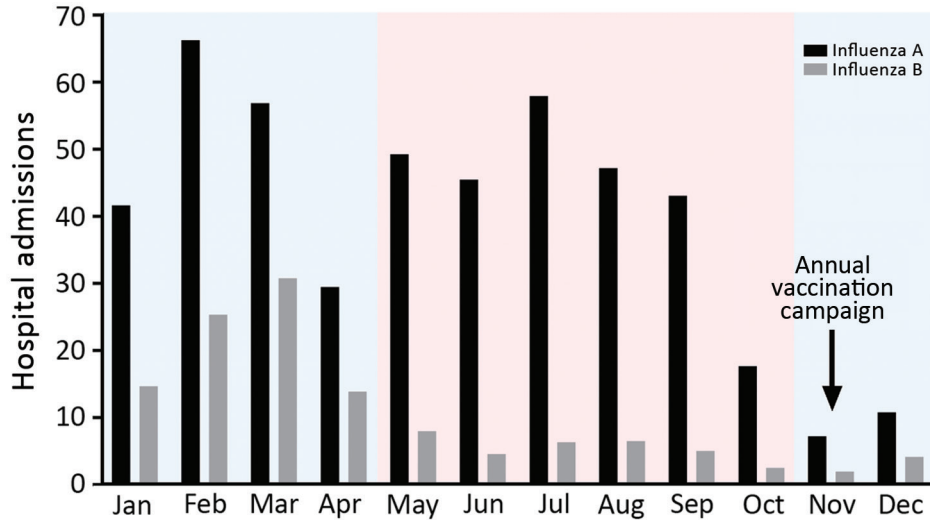
Unlike temperate regions, peak seasons of influenza in the subtropics are not restricted to winter months. Because previous studies have revealed a biannual pattern of influenza activity in Hong Kong and surrounding regions (12,17), we divided the surveyed 17-year period into 34 influenza seasons. We grouped calendar months under winter and summer influenza seasons on the basis of the average monthly number of hospital admissions of patients for whom influenza was laboratory confirmed that were recorded during the study period.

The Hong Kong Government Influenza Vaccination Programme recommends use of the Northern Hemisphere influenza vaccines and begins annual vaccination every November. Therefore, we defined the protection period of Northern Hemisphere vaccines as from November through October of the following year. Although Southern Hemisphere vaccines are not typically used in Hong Kong, for this analysis we regarded the protection period of these vaccines to be from May through April of the following year.

#### Results

During the 17-year study period, 8,011 persons with influenza A and 2,079 with influenza B were admitted to the Prince of Wales Hospital. Both infections exhibited 2 seasonal peaks in most years (Figure 1). Most influenza admissions occurred from late winter through early spring (late January through early March) and around summer (May–September), although the summer peak of influenza B varied more and was less prominent than that of influenza A. Based on this observed seasonality, we grouped circulating strains collected during November–April under the winter season and those collected during May–October under the summer season.

We successfully sequenced 502 influenza A(H3N2) and 481 influenza B samples covering all influenza seasons in the study period, except in 2009, when influenza A(H1N1)pdm09 dominated activity. In the phylogenetic analysis based on HA sequences, H3N2 virus exhibited a characteristic ladder-like tree topology suggesting continuous



**Figure 1.** Seasonality of influenza A and B, Hong Kong, China, 1996–2012. The numbers of patients hospitalized with acute respiratory illnesses and who had laboratory-confirmed influenza were retrieved from a computerized laboratory information system at the microbiology department of a district general hospital that serves 9% (0.6 million) of Hong Kong's population. Pink indicates summer seasons; blue indicates winter seasons.

unidirectional evolution (Figure 2, panel A). Existing H3N2 variants circulated for a median of 2 years (range 1–4 years), with gaps between the winter and summer seasons, and became displaced rapidly by newly emerging variants. We observed a more complex tree topology for influenza B, where new lineages emerged from deep branches and evolved toward multiple directions (Figure 2, panel B). In addition, multiple influenza B variants co-circulated for a median of 6 years (range 2–15 years) before being displaced by new variants.

Of the 983 circulating strains examined, 8 (maximum 2 per season) influenza A(H3N2) and 12 (maximum 4 per season) influenza B viruses were regarded as far away from any vaccine strains recommended during the 17-year study period. The pairwise HA amino acid distances of these strains were more than twice the SD from the mean of the related clusters (online Technical Appendix Figures 1, 2, <https://wwwnc.cdc.gov/EID/article/24/10/18-0652-Techapp1.pdf>), and they were distant from all vaccine strains based on the phylogenetic tree topology.

## Matching Between Circulating and Vaccine Strains

### Influenza A(H3N2)

We assessed the temporal relationship between circulating H3N2 viruses collected in this study and their closest Northern Hemisphere vaccine strain based on HA amino acid sequence comparisons (Figure 3, panel A). Most Northern hemisphere vaccine-like strains (9/11) had circulated in Hong Kong for >1 year before WHO first recommended them for inclusion in the Northern Hemisphere vaccine. We found co-circulation of multiple strains in 17 (50.0%) of the 34 seasons. In 13 (38.2%) seasons, at least a portion of the circulating viruses were closely matched with the contemporary vaccine strain. However, in only 7

(20.6%) seasons, the closely matched portion accounted for the >50% of circulating viruses examined. A full match was achieved in only 2 (5.9%) seasons. We determined the proportion of circulating viruses that were genetically closely matched with vaccine strains based on HA amino acid sequence comparison (Table), which should not be taken as vaccine effectiveness because cross-protection between mismatched strains can occur.

We repeated the same analysis with respect to Southern Hemisphere vaccine strains. Similarly, most (8/11) Southern Hemisphere H3N2 virus vaccine strains had circulated in Hong Kong for >1 year before WHO first recommended them for inclusion in the Southern Hemisphere vaccine. A similar picture on matching was revealed (Figure 3, panel B). In 10 (29.4%) of the 34 seasons, at least a portion of the circulating viruses were closely matched with the contemporary vaccine strain. However, only in 5 (14.7%) seasons did the matched portion account for the >50% of circulating viruses examined.

### Influenza B

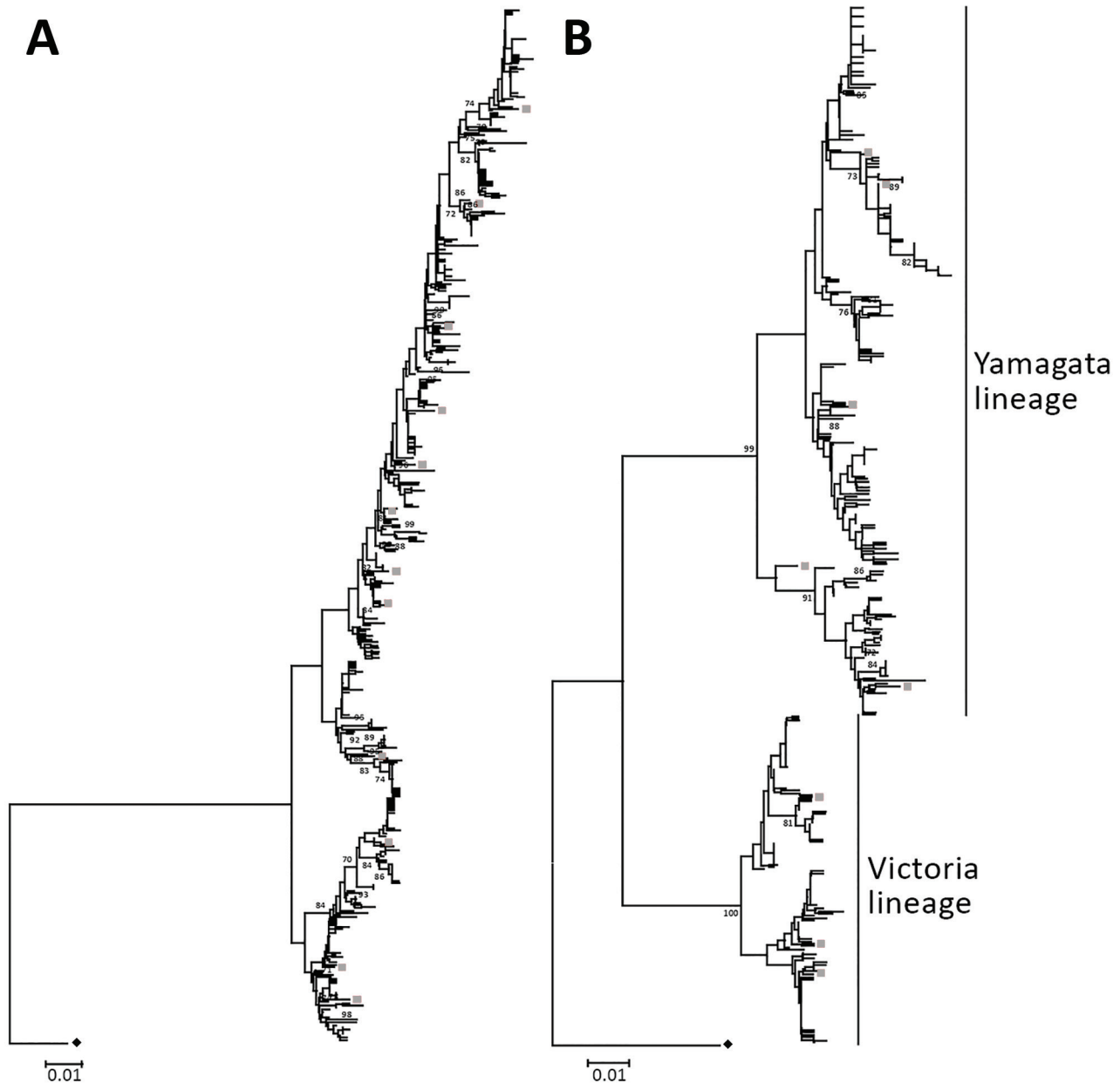
We assessed the temporal relationship between circulating influenza B viruses and their closely matched Northern Hemisphere vaccine strains based on HA amino acid sequence comparisons (Figure 4, panel A). Most (6/7) of the Northern Hemisphere influenza B vaccine-like circulating strains had been found in Hong Kong >1 year before WHO first recommended them as vaccine strains. Co-circulation of multiple strains was found in 26 (76.5%) of the 34 seasons examined. In 15 (44.1%) seasons, at least some of the circulating viruses were closely matched with the contemporary Northern Hemisphere vaccine strain. However, in only 5 (14.7%) seasons did the matched portion account for the >50% of circulating viruses examined.

Analysis of Southern Hemisphere vaccine strains showed a similar result (Figure 4, panel B). Most (5/6) of the vaccine-like strains were found in Hong Kong >1 year before WHO first recommended them as vaccine strains. Again, we found matched strains in 14 (41.2%) seasons, but in only 4 (11.8%) seasons did the matched viruses account for the >50% of viruses examined.

### Strain Drifting between Winter and Summer Seasons

#### Influenza A(H3N2)

In 7 of the 17 years (2002, 2003, 2004, 2005, 2007, 2009, and 2011), the predominant H3N2 virus strain in summer differed from that in the preceding winter. We further

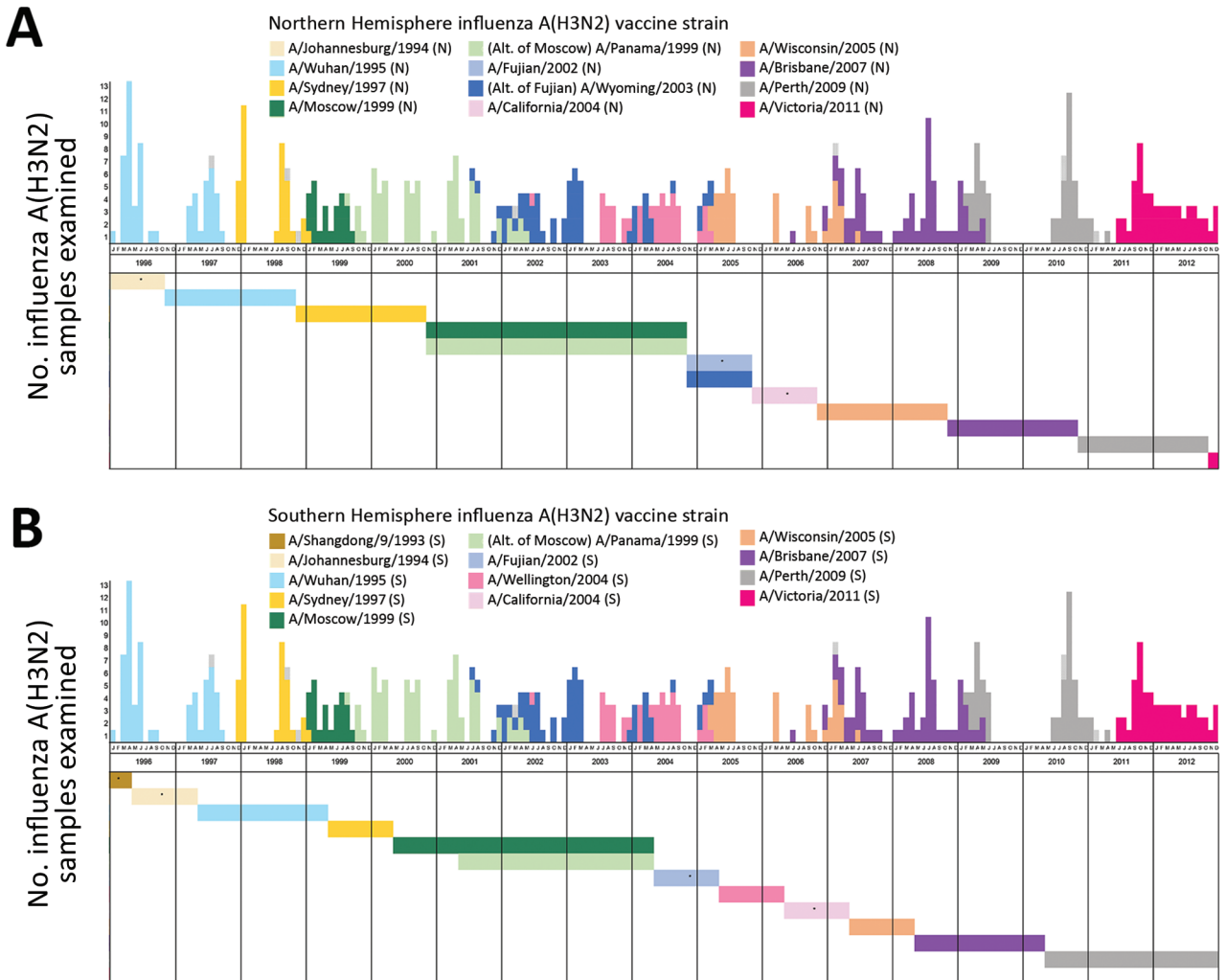


**Figure 2.** Neighbor-joining phylogenetic inference of near-complete hemagglutinin protein of influenza A(H3N2) (A) and influenza B (B), Hong Kong, China, 1996–2012. Pairwise protein sequence distances were calculated using a Poisson model. Triangles denote ancestral influenza strains: influenza A(H3N2), A/Hong Kong/1/1968, GenBank accession no. CY044261; influenza B, B/Lee/1940, accession no. CY115111. Gray squares denote recommended vaccine strains; for clarity, only those used in Figures 3 and 4 are shown. Bootstrap values >70% are shown at the respective nodes. All alignment positions containing gaps were omitted from the analysis. Trees were rooted to ancestral strains and drawn to scale. Scale bars indicate numbers of amino acid substitutions per position. GenBank accession numbers of hemagglutinin sequences of circulating strains collected in this study are shown in the online Technical Appendix Table (<https://wwwnc.cdc.gov/EID/article/24/10/18-0652-Techapp1.pdf>).

examined whether administration of an additional Southern Hemisphere vaccine at the beginning of summer (around May) could achieve better vaccine matching. In 5 of the 7 years, content of newly available Southern Hemisphere vaccines was identical to the preceding Northern Hemisphere vaccine composition. In 2004 and 2005, although another strain was chosen for the Southern Hemisphere vaccine, the new vaccine strain was not closely matched with circulating viruses at that time. These results suggested that additional administration of Southern Hemisphere vaccines at the beginning of summer would not have improved the immunity against the circulating H3N2 strains.

**Influenza B**

In 6 of the 17 years (2000, 2002, 2004, 2008, 2010, and 2011), a drift occurred in the predominant influenza B variant from winter to summer seasons. Similarly, we examined the value of an additional Southern Hemisphere vaccine administered at the beginning of summer and again found no benefit. In 5 of the 6 drift years, the newly recommended Southern Hemisphere vaccine composition was identical to the previous Northern Hemisphere vaccine. In 2008, although the Southern Hemisphere vaccine contained a new virus (Yamagata, B/Florida/4/2006) that closely matched the circulating viruses detected in the first half (winter season) of the same year, the circulating strain



**Figure 3.** Matching between circulating and vaccine strains of influenza A(H3N2), Hong Kong, China, 1996–2012. Each circulating virus was assigned on the basis of full-length hemagglutinin amino acid distance and phylogenetic tree topology to the closest World Health Organization–recommended influenza A(H3N2) vaccine strain for Northern Hemisphere (A) and Southern Hemisphere (B) vaccines. Closely matched viruses are labeled with the same color. The circulating strains with no closest vaccine strain identified as defined in the Methods are indicated by dotted boxes. Horizontal color bars indicate the protection period of the corresponding vaccine strain. Asterisks indicate vaccine strains without closely matched circulating viruses. The protection period of Northern Hemisphere vaccines was defined as from November through the following October and of Southern Hemisphere vaccines from May through the following April. All the alternative vaccine strains were analyzed, and those with different results are shown.

## RESEARCH

**Table.** Proportion of circulating influenza viruses with HA amino acid sequences closely matched with vaccine strains, Hong Kong, China, 1996–2012\*

Year, season	Influenza A(H3N2) vaccine strains, %†		Influenza B vaccine strains, %†	
	Northern Hemisphere	Southern Hemisphere	Northern Hemisphere	Southern Hemisphere
1996				
Winter	None‡	None‡	All§	All§
Summer	None‡	None‡	77.8	77.8
1997				
Winter	All§	None‡	14.7	None‡
Summer	94.4	94.4	None‡	None‡
1998				
Winter	None‡	None‡	None‡	None‡
Summer	None‡	None‡	None‡	None‡
1999				
Winter	18.8	None‡	6.3	6.3
Summer	None‡	None‡	None‡	None‡
2000				
Winter	None‡	None‡	None‡	None‡
Summer	None‡	None‡	None‡	None‡
2001				
Winter	All§¶	None‡	None‡	None‡
Summer	84.6¶	84.6¶	None‡	25.0
2002				
Winter	41.2¶	41.2¶	None‡	None‡
Summer	6.7	6.7	12.5	12.5
2003				
Winter	None‡	None‡	73.3	6.7
Summer	None‡	None‡	None‡	None‡
2004				
Winter	None‡	None‡	None‡	None‡
Summer	None‡	None‡	None‡	None‡
2005				
Winter	31.3#	None‡	29.4	None‡
Summer	None‡	None‡	12.5	12.5
2006				
Winter	None‡	None‡	None‡	None‡
Summer	None‡	None‡	None‡	90.0
2007				
Winter	52.4	None‡	9.1	9.1
Summer	6.7	6.7	None‡	None‡
2008				
Winter	None‡	None‡	22.2	22.2
Summer	None‡	All§	None‡	None‡
2009				
Winter	52.2	52.2	None‡	None‡
Summer**	22.2	22.2	None‡	None‡
2010				
Winter	None‡	None‡	66.7	None‡
Summer	None‡	92.9	26.7	26.7
2011				
Winter	87.5	87.5	64.3	64.3
Summer	None‡	None‡	37.5	37.5
2012				
Winter	None‡	None‡	31.0	31.0
Summer	None‡	None‡	None‡	None‡

\*Calendar months belonging to winter or summer influenza seasons were based on the average number of cases admitted per month during the study period (Figure 1). Winter seasons were November of previous year through April of current year; influenza usually peaks in February and March. Summer seasons were May–October; influenza usually peaks in July and August. HA, hemagglutinin.

†Co-circulation of multiple strains with a certain percentage closely matched the contemporary vaccine strain based on HA amino acid sequence comparison.

‡None of the circulating viruses examined were closely matched with the contemporary vaccine strain based on HA amino acid sequence comparison.

§All circulating viruses examined were closely matched with the contemporary vaccine strain based on HA amino acid sequence comparison.

¶A/Panama/1999, an alternate to A/Moscow/99, closely matched the circulating strains of 2001 winter and summer seasons and 2002 winter season.

#The World Health Organization recommended 2 A(H3N2) vaccine strains for the Northern Hemisphere in 2005, one of which, A/Wyoming/2003, closely matched a portion of the viruses circulating during the 2005 winter season.

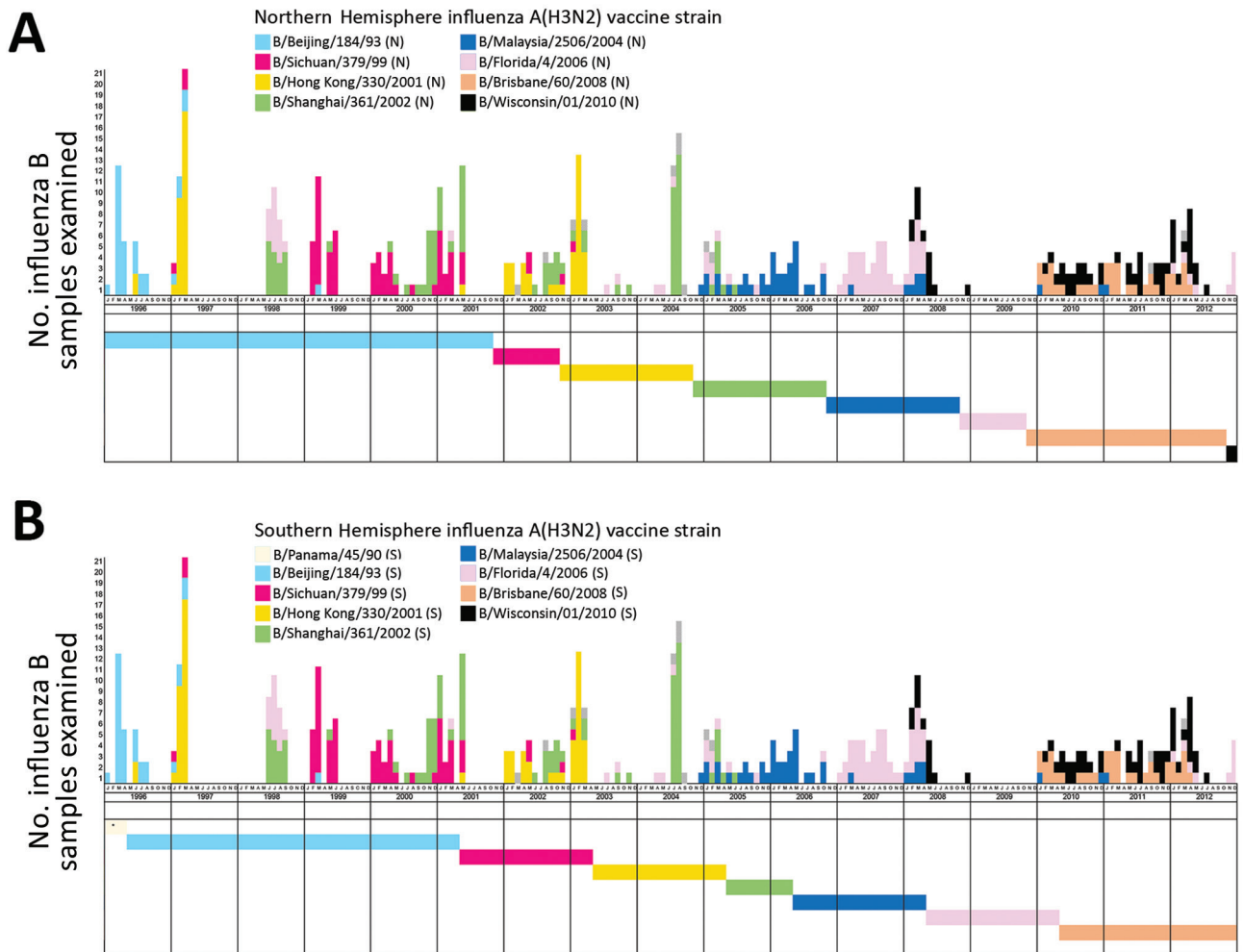
\*\*Dominated by influenza A(H1N1)pdm09.

was soon replaced by another influenza B variant not covered in the recommended Southern Hemisphere vaccine.

**Discussion**

This study focused on the vaccine matching of influenza A(H3N2) and influenza B viruses because antigenic drift frequently occurs in these viruses, leading to changes in vaccine recommendation, more so than for influenza A(H1N1) virus (7). Antigenic characterization of influenza viruses, and thus the assessment of vaccine matching, has traditionally been based on hemagglutination inhibition (HI) assay. HI measures the ability of specific antibodies, typically reference ferret antiserum, to inhibit the binding of virus HA to receptors on erythrocytes. However, H3N2 virus

variants from the past 3 decades have progressively displayed reduced avidity to erythrocytes of commonly used animal species, making the results of HI assays difficult to interpret (8,18). In this study, we analyzed the amino acid sequence of HA to infer vaccine matching because genetic and antigenic characteristics of influenza viruses display remarkable correspondence, and both carry a strong correlation with vaccine effectiveness (19–21). The molecular phylogenetic approach used enables direct analyses of viruses in clinical samples rather than relying on cell culture–propagated isolates. Furthermore, the molecular approach does not require influenza variant–specific antiserum and is more feasible for large-scale epidemiologic surveys. One caution in interpreting molecular results is



**Figure 4.** Matching between circulating and vaccine strains of influenza B, Hong Kong, China, 1996–2012. Each circulating virus was assigned on the basis of full-length hemagglutinin amino acid distances and phylogenetic tree topology to the closest World Health Organization–recommended influenza B vaccine strain for Northern Hemisphere (A) and Southern Hemisphere (B) vaccines. Closely matched viruses are labeled with the same color. The circulating strains with no closest vaccine strain identified as defined in the Methods are indicated by dotted boxes. Horizontal color bars indicate the protection period of the corresponding vaccine strain. Asterisks indicate vaccine strains without closely matched circulating viruses. The protection period of Northern Hemisphere (A) vaccines was defined as from November through the following October and of Southern Hemisphere (B) vaccines from May through the following April. All the alternative vaccine strains were analyzed, and those with different results are shown.

that influenza vaccines might still display cross-protection efficacy against circulating variants that are regarded as not closely matched to the vaccine strains based on genetic comparison. Nevertheless, our approach to define matching between vaccine and circulating strains would be sufficient to guide the selection of Northern and Southern Hemisphere vaccines and to inform the potential benefit of a biannual vaccination strategy using both Northern and Southern Hemisphere vaccines on the background of influenza epidemiology faced by subtropical countries.

Given the extensive amount of travel between Hong Kong and neighboring East Asia cities, we expect a substantial sharing of viruses detected in Hong Kong with the region. Although the proportion of infectious travelers is difficult to estimate, a study from Xiamen International Airport (Xiamen, China) in 2015–2016 found that  $\approx 8/10,000$  incoming travelers had influenza-like illness, of whom 21% tested positive for influenza (22). The fact that Hong Kong shares a similar, though not always synchronized, pool of influenza viruses with the neighboring East and Southeast Asian cities is supported by a study from Bahl et al. (23) and sequence information from Nextstrain (<https://nextstrain.org>). East and Southeast Asia are the sources of new genetic variants of H3N2 virus, which seed epidemics worldwide (24–28). In line with this, we demonstrated that most of the H3N2 virus strains selected for inclusion in influenza vaccines could be detected in East Asia  $>1$  year before recommendation by WHO. Most of these newly emerged strains predominated for 2 years, covering 4 influenza seasons in this region. Although vaccine compositions were reviewed twice a year, when vaccines incorporating newly emerged strains were made available to the market, often another newly drifted influenza strain had become predominant in the region. Based on our analysis covering 17 years with 34 influenza seasons, the probability of a season having the contemporary vaccine closely matched with  $>50\%$  of the circulating viruses was only 20.6%, and if we aimed at matching  $>70\%$  of circulating viruses, the probability was further reduced to 14.7%. As reflected in a recent study on vaccine effectiveness against hospitalization among children in Hong Kong, efficacy against H3N2 virus was on average 36.6% (29).

Because Hong Kong, like many other subtropical cities, faces multiple influenza peaks annually, we raised the question whether Southern Hemisphere influenza vaccines would provide timely and better vaccine matching. However, we observed that most of the time composition of the Southern Hemisphere vaccine is the same as the preceding Northern Hemisphere vaccine and thus made no difference in vaccine matching. Furthermore, according to the current production schedule, Southern Hemisphere vaccines are made available in May, just after the period with highest influenza activity in Hong Kong (January–March).

Therefore, to administer influenza vaccine in May requires vaccines with efficacy lasting for almost 12 months, which is not a demonstrated property of current vaccines.

Given the comparable duration of winter and summer influenza seasons in Hong Kong, the next question was whether biannual vaccination with Northern and Southern Hemisphere vaccines administered before the winter and summer seasons, respectively, would improve immunity against circulating strains. In early 2015, Hong Kong faced a strong winter influenza peak associated with a newly drifted variant, influenza A(H3N2)/Switzerland, which was not incorporated into the Northern Hemisphere vaccine. In view of a possible strong summer peak, an ad hoc vaccination campaign was conducted in May using the newly available Southern Hemisphere vaccine that incorporated the new variant. However, willingness to accept the vaccine was low among healthcare professionals, and a major proportion expressed concern (30). Furthermore, in recent years, concern has surfaced that repeated influenza vaccination might negatively affect current vaccine effectiveness (31–33). Although a recent meta-analysis does not support such a claim (34), this possibility should not be ignored when considering biannual vaccination. Although the cost-effectiveness and feasibility of a biannual vaccination strategy is yet to be assessed, our analysis does not support that an additional vaccine before summer seasons can improve matching. We observed a substantial chance of drift in predominant influenza viruses from season to season (41.2% for H3N2 and 35.3% for influenza B), and the newly available Southern Hemisphere vaccines typically had the same strain composition as the preceding Northern Hemisphere vaccine or the updated Southern Hemisphere composition still did not achieve a close match with the then-circulating viruses.

East Asia and other subtropical regions face different challenges in achieving close vaccine matching for influenza A(H3N2) and influenza B. For H3N2 virus, the forthcoming predominant strain can be identified from a subtropical region-based surveillance network. The newly emerged strains usually predominate for 1–2 years, which cover 4 influenza seasons in this region. If recommendation on vaccine composition followed by manufacturing is accomplished within a few months, a close match can be achieved in the subsequent 2–3 seasons to provide the best possible vaccine effectiveness. This streamlined workflow should be practicable with current logistics and production provided that a sustainable market can be established in the region.

The challenge posed by influenza B is completely different. Although Bedford et al. suggested that East and Southeast Asia play limited roles in disseminating new variants of influenza B (24), we observed that most of the influenza B strains could be found in East Asia long



before they are selected as vaccine strains. East Asia is therefore also an important site for identifying emergent influenza B strains. However, co-circulation and multiple reintroductions of existing and emerging influenza strains complicate selection of vaccine strains. Incorporating both lineages of influenza B into the quadrivalent vaccine might be able to solve at least part of the problem. In either case, a next-generation influenza vaccine should be designed to provide broad cross-protection against different antigenic variants (35).

East Asia is an important contributor to the influenza virus surveillance program. However, vaccine strains incorporated in the Northern and Southern Hemisphere influenza vaccines frequently do not match the contemporary circulating viruses in this region. Even biannual vaccination is unlikely to improve vaccine matching. A specific strategy is urgently needed to select and produce influenza vaccines targeting the tropical and subtropical regions.

This work was supported by Area of Excellence Scheme, University Grants Committee, Hong Kong [AoE/M-12/06].

### About the Author

Dr. Martin C.W. Chan is an assistant professor in the Department of Microbiology of the Chinese University of Hong Kong. His primary research interests are molecular epidemiology of acute viral infections, especially those caused by influenza viruses and noroviruses; use of metagenomic next-generation sequencing in clinical diagnostics; gut virome; and food virology.

### References

- Biggerstaff M, Cauchemez S, Reed C, Gambhir M, Finelli L. Estimates of the reproduction number for seasonal, pandemic, and zoonotic influenza: a systematic review of the literature. *BMC Infect Dis*. 2014;14:480. <http://dx.doi.org/10.1186/1471-2334-14-480>
- World Health Organization. Influenza (seasonal). Fact sheet. 2016 [cited 2017 Jun 15]. <http://www.who.int/mediacentre/factsheets/fs211/en/>
- Bennett JE, Dolin R, Blaser MJ, Mandell, Douglas, and Bennett's principles and practices of infectious diseases, 8th ed. Philadelphia: Elsevier; 2015.
- Cox NJ, Subbarao K. Global epidemiology of influenza: past and present. *Annu Rev Med*. 2000;51:407–21. <http://dx.doi.org/10.1146/annurev.med.51.1.407>
- Carrat F, Flahault A. Influenza vaccine: the challenge of antigenic drift. *Vaccine*. 2007;25:6852–62. <http://dx.doi.org/10.1016/j.vaccine.2007.07.027>
- Houser K, Subbarao K. Influenza vaccines: challenges and solutions. *Cell Host Microbe*. 2015;17:295–300. <http://dx.doi.org/10.1016/j.chom.2015.02.012>
- World Health Organization. WHO recommendations on the composition of influenza virus vaccines [cited 2017 Aug 10]. <http://www.who.int/influenza/vaccines/virus/recommendations/en/>
- Hampson A, Barr I, Cox N, Donis RO, Siddhivinayak H, Jernigan D, et al. Improving the selection and development of influenza vaccine viruses—report of a WHO informal consultation on improving influenza vaccine virus selection, Hong Kong SAR, China, 18–20 November 2015. *Vaccine*. 2017;35:1104–9. <http://dx.doi.org/10.1016/j.vaccine.2017.01.018>
- Kong H. Hong Kong: the facts [cited 2017 Sep 6]. <https://www.gov.hk/en/about/abouthk/factsheets/docs/population.pdf>
- Census and Statistics Department, Government of the Hong Kong Special Administrative Region. Transport, communication and tourism. Cross-boundary travel survey 2015 [cited 2018 Jun 7]. <https://www.censtatd.gov.hk/hkstat/sub/sp130.jsp?productCode=FA100267>
- Census and Statistics Department, Government of the Hong Kong Special Administrative Region. Transport, communication and tourism. Table E551: visitor arrivals by country/region of residence [cited 2018 Jun 7]. <https://www.censtatd.gov.hk/hkstat/sub/sp130.jsp?productCode=D5600551>
- Chan PK, Tam WW, Lee TC, Hon KL, Lee N, Chan MC, et al. Hospitalization incidence, mortality, and seasonality of common respiratory viruses over a period of 15 years in a developed subtropical city. *Medicine (Baltimore)*. 2015;94:e2024. <http://dx.doi.org/10.1097/MD.0000000000002024>
- Tang JW, Ngai KL, Lam WY, Chan PK. Seasonality of influenza A(H3N2) virus: a Hong Kong perspective (1997–2006). *PLoS One*. 2008;3:e2768. <http://dx.doi.org/10.1371/journal.pone.0002768>
- World Health Organization. Influenza Research Database. World Health Organization recommendations for composition of influenza vaccines [cited 2017 Aug 10]. <https://www.fludb.org/brc/vaccineRecommend.spg?decorator=influenza>
- Tamura K, Stecher G, Peterson D, Filipski A, Kumar S. MEGA6: molecular evolutionary genetics analysis version 6.0. *Mol Biol Evol*. 2013;30:2725–9. <http://dx.doi.org/10.1093/molbev/mst197>
- Zuckerandl E, Pauling L. Evolutionary divergence and convergence in proteins. In: Bryson V, Vogel HJ, editors. *Evolving genes and proteins*. New York: Academic Press; 1965. p. 97–166.
- Shu YL, Fang LQ, de Vlas SJ, Gao Y, Richardus JH, Cao WC. Dual seasonal patterns for influenza, China. *Emerg Infect Dis*. 2010;16:725–6. <http://dx.doi.org/10.3201/eid1604.091578>
- Lin YP, Xiong X, Wharton SA, Martin SR, Coombs PJ, Vachieri SG, et al. Evolution of the receptor binding properties of the influenza A(H3N2) hemagglutinin. [Erratum in: *Proc Natl Acad Sci U S A*. 2013;110:2677. <http://dx.doi.org/10.1073/pnas.1218841110>]. *Proc Natl Acad Sci U S A*. 2012;109:21474–9.
- Smith DJ, Lapedes AS, de Jong JC, Bestebroer TM, Rimmelzwaan GF, Osterhaus AD, et al. Mapping the antigenic and genetic evolution of influenza virus. *Science*. 2004;305:371–6. <http://dx.doi.org/10.1126/science.1097211>
- Lee MS, Chen JS. Predicting antigenic variants of influenza A/H3N2 viruses. *Emerg Infect Dis*. 2004;10:1385–90. <http://dx.doi.org/10.3201/eid1008.040107>
- Gupta V, Earl DJ, Deem MW. Quantifying influenza vaccine efficacy and antigenic distance. *Vaccine*. 2006;24:3881–8. <http://dx.doi.org/10.1016/j.vaccine.2006.01.010>
- Chen J, Yang K, Zhang M, Shen C, Chen J, Wang G, et al. Rapid identification of imported influenza viruses at Xiamen International Airport via an active surveillance program. *Clin Microbiol Infect*. 2018;24:289–94. <http://dx.doi.org/10.1016/j.cmi.2017.05.027>
- Bahl J, Nelson MI, Chan KH, Chen R, Vijaykrishna D, Halpin RA, et al. Temporally structured metapopulation dynamics and persistence of influenza A H3N2 virus in humans. *Proc Natl Acad Sci U S A*. 2011;108:19359–64. <http://dx.doi.org/10.1073/pnas.1109314108>
- Bedford T, Riley S, Barr IG, Broor S, Chadha M, Cox NJ, et al. Global circulation patterns of seasonal influenza viruses vary with antigenic drift. *Nature*. 2015;523:217–20. <http://dx.doi.org/10.1038/nature14460>
- Russell CA, Jones TC, Barr IG, Cox NJ, Garten RJ, Gregory V, et al. The global circulation of seasonal influenza A (H3N2) viruses. *Science*. 2008;320:340–6. <http://dx.doi.org/10.1126/science.1154137>

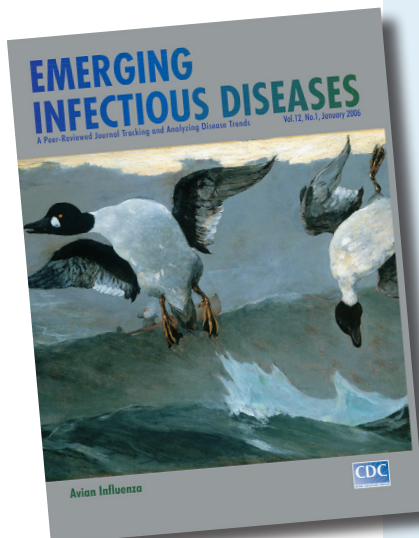
26. Lemey P, Rambaut A, Bedford T, Faria N, Bielejec F, Baele G, et al. Unifying viral genetics and human transportation data to predict the global transmission dynamics of human influenza H3N2. *PLoS Pathog.* 2014;10:e1003932. <http://dx.doi.org/10.1371/journal.ppat.1003932>
27. Bedford T, Cobey S, Beerli P, Pascual M. Global migration dynamics underlie evolution and persistence of human influenza A (H3N2). *PLoS Pathog.* 2010;6:e1000918. <http://dx.doi.org/10.1371/journal.ppat.1000918>
28. Chan J, Holmes A, Rabadan R. Network analysis of global influenza spread. *PLOS Comput Biol.* 2010;6:e1001005. <http://dx.doi.org/10.1371/journal.pcbi.1001005>
29. Cowling BJ, Chan KH, Feng S, Chan EL, Lo JY, Peiris JS, et al. The effectiveness of influenza vaccination in preventing hospitalizations in children in Hong Kong, 2009–2013. *Vaccine.* 2014;32:5278–84. <http://dx.doi.org/10.1016/j.vaccine.2014.07.084>
30. Wong MC, Nelson EA, Leung C, Lee N, Chan MC, Choi KW, et al. Ad hoc influenza vaccination during years of significant antigenic drift in a tropical city with 2 seasonal peaks: a cross-sectional survey among health care practitioners. *Medicine (Baltimore).* 2016;95:e3359. <http://dx.doi.org/10.1097/MD.0000000000003359>
31. Tam YH, Valkenburg SA, Perera RAPM, Wong JHF, Fang VJ, Ng TWY, et al. Immune responses to twice-annual influenza vaccination in older adults in Hong Kong. *Clin Infect Dis.* 2018;66:904–12. <http://dx.doi.org/10.1093/cid/cix900>
32. McLean HQ, Thompson MG, Sundaram ME, Meece JK, McClure DL, Friedrich TC, et al. Impact of repeated vaccination on vaccine effectiveness against influenza A(H3N2) and B during 8 seasons. *Clin Infect Dis.* 2014;59:1375–85. <http://dx.doi.org/10.1093/cid/ciu680>
33. Skowronski DM, Chambers C, Sabaiduc S, De Serres G, Winter AL, Dickinson JA, et al. A perfect storm: impact of genomic variation and serial vaccination on low influenza vaccine effectiveness during the 2014–2015 season. *Clin Infect Dis.* 2016;63:21–32. <http://dx.doi.org/10.1093/cid/ciw176>
34. Ramsay LC, Buchan SA, Stirling RG, Cowling BJ, Feng S, Kwong JC, et al. The impact of repeated vaccination on influenza vaccine effectiveness: a systematic review and meta-analysis. *BMC Med.* 2017;15:159. <http://dx.doi.org/10.1186/s12916-017-0919-0>
35. Pica N, Palese P. Toward a universal influenza virus vaccine: prospects and challenges. *Annu Rev Med.* 2013;64:189–202. <http://dx.doi.org/10.1146/annurev-med-120611-145115>

Address for correspondence: Paul K.S. Chan, The Chinese University of Hong Kong, Department of Microbiology, 1/F LCW Clinical Sciences Bldg., Prince of Wales Hospital, Shatin, New Territories, Hong Kong Special Administrative Region, China; email: paulkschan@cuhk.edu.hk

# etymologia revisited

## Influenza

[inˈfloo-enˈzə]



Originally published  
in January 2006

Acute viral infection of the respiratory tract. From Latin *influentia*, “to flow into”; in medieval times, intangible fluid given off by stars was believed to affect humans. The Italian influenza referred to any disease outbreak thought to be influenced by stars. In 1743, what Italians called an *influenza di catarro* (“epidemic of catarrh”) spread across Europe, and the disease came to be known in English as simply “influenza.”

Sources: Dorland’s illustrated medical dictionary. 30th ed. Philadelphia: Saunders; 2003 and Quinion M. World wide words. 1998 Jan 3 [cited 2005 Dec 5]. Available from <http://www.worldwidewords.org/topicalwords/tw-inf1.htm>

[https://wwwnc.cdc.gov/eid/article/01/12/et-1201\\_article](https://wwwnc.cdc.gov/eid/article/01/12/et-1201_article)

# Frequent Genetic Mismatch between Vaccine Strains and Circulating Seasonal Influenza Viruses, Hong Kong, China, 1996–2012

## Technical Appendix

**Technical Appendix Table.** GenBank accession numbers of hemagglutinin sequences of circulating influenza A and B strains, Hong Kong, China, 1996–2012\*

GenBank accession no.	Type	Isolate ID	Collection date
EU516331	FluA_H3N2_HA	A/Hong Kong/CUHK22910/2004(H3N2)	Mar-2004
EU856814	FluA_H3N2_HA	A/Hong Kong/CUHK10026/2005(H3N2)	Apr-2005
EU856815	FluA_H3N2_HA	A/Hong Kong/CUHK10100/1999(H3N2)	Jan-1999
EU856816	FluA_H3N2_HA	A/Hong Kong/CUHK10132/1999(H3N2)	Jan-1999
EU856817	FluA_H3N2_HA	A/Hong Kong/CUHK10133/1999(H3N2)	Jan-1999
EU856818	FluA_H3N2_HA	A/Hong Kong/CUHK10151/1999(H3N2)	Jan-1999
EU856819	FluA_H3N2_HA	A/Hong Kong/CUHK10186/1998(H3N2)	Jan-1998
EU856820	FluA_H3N2_HA	A/Hong Kong/CUHK10216/1998(H3N2)	Jan-1998
EU856821	FluA_H3N2_HA	A/Hong Kong/CUHK10276/1998(H3N2)	Jan-1998
EU856822	FluA_H3N2_HA	A/Hong Kong/CUHK10297/2005(H3N2)	Apr-2005
EU856824	FluA_H3N2_HA	A/Hong Kong/CUHK10554/1998(H3N2)	Jan-1998
EU856825	FluA_H3N2_HA	A/Hong Kong/CUHK10591/2005(H3N2)	Apr-2005
EU856826	FluA_H3N2_HA	A/Hong Kong/CUHK10632/1998(H3N2)	Jan-1998
EU856827	FluA_H3N2_HA	A/Hong Kong/CUHK10660/1998(H3N2)	Jan-1998
EU856829	FluA_H3N2_HA	A/Hong Kong/CUHK010954/1998(H3N2)	Jan-1998
EU856830	FluA_H3N2_HA	A/Hong Kong/CUHK10958/1998(H3N2)	Jan-1998
EU856833	FluA_H3N2_HA	A/Hong Kong/CUHK11230/1999(H3N2)	Feb-1999
EU856834	FluA_H3N2_HA	A/Hong Kong/CUHK11237/1999(H3N2)	Feb-1999
EU856836	FluA_H3N2_HA	A/Hong Kong/CUHK11255/1999(H3N2)	Feb-1999
EU856837	FluA_H3N2_HA	A/Hong Kong/CUHK11949/2005(H3N2)	Apr-2005
EU856839	FluA_H3N2_HA	A/Hong Kong/CUHK12160/1997(H3N2)	May-1997
EU856840	FluA_H3N2_HA	A/Hong Kong/CUHK12312/1999(H3N2)	Mar-1999
EU856841	FluA_H3N2_HA	A/Hong Kong/CUHK12316/2005(H3N2)	May-2005
EU856842	FluA_H3N2_HA	A/Hong Kong/CUHK12320/2005(H3N2)	May-2005
EU856843	FluA_H3N2_HA	A/Hong Kong/CUHK12420/2005(H3N2)	May-2005
EU856844	FluA_H3N2_HA	A/Hong Kong/CUHK12425/2005(H3N2)	May-2005
EU856845	FluA_H3N2_HA	A/Hong Kong/CUHK12563/1997(H3N2)	Jun-1997
EU856846	FluA_H3N2_HA	A/Hong Kong/CUHK12566/1997(H3N2)	Jun-1997
EU856847	FluA_H3N2_HA	A/Hong Kong/CUHK12572/1999(H3N2)	Apr-1999
EU856848	FluA_H3N2_HA	A/Hong Kong/CUHK12580/1999(H3N2)	Apr-1999
EU856849	FluA_H3N2_HA	A/Hong Kong/CUHK12626/1997(H3N2)	Jun-1997
EU856850	FluA_H3N2_HA	A/Hong Kong/CUHK12794/1997(H3N2)	Jun-1997
EU856851	FluA_H3N2_HA	A/Hong Kong/CUHK12897/1999(H3N2)	Apr-1999
EU856852	FluA_H3N2_HA	A/Hong Kong/CUHK13033/2001(H3N2)	Mar-2001
EU856853	FluA_H3N2_HA	A/Hong Kong/CUHK13048/2001(H3N2)	Mar-2001
EU856854	FluA_H3N2_HA	A/Hong Kong/CUHK13126/2004(H3N2)	Feb-2004
EU856855	FluA_H3N2_HA	A/Hong Kong/CUHK13172/2001(H3N2)	Mar-2001
EU856856	FluA_H3N2_HA	A/Hong Kong/CUHK13216/2002(H3N2)	Mar-2002
EU856857	FluA_H3N2_HA	A/Hong Kong/CUHK13249/2002(H3N2)	Mar-2002
EU856858	FluA_H3N2_HA	A/Hong Kong/CUHK13278/2002(H3N2)	Mar-2002
EU856859	FluA_H3N2_HA	A/Hong Kong/CUHK13299/2003(H3N2)	Mar-2003
EU856860	FluA_H3N2_HA	A/Hong Kong/CUHK13339/2003(H3N2)	Mar-2003
EU856861	FluA_H3N2_HA	A/Hong Kong/CUHK13434/2003(H3N2)	Mar-2003
EU856862	FluA_H3N2_HA	A/Hong Kong/CUHK13483/2003(H3N2)	Mar-2003
EU856863	FluA_H3N2_HA	A/Hong Kong/CUHK13510/2001(H3N2)	Mar-2001
EU856864	FluA_H3N2_HA	A/Hong Kong/CUHK13527/2003(H3N2)	Mar-2003
EU856865	FluA_H3N2_HA	A/Hong Kong/CUHK13658/2001(H3N2)	Mar-2001

GenBank accession no.	Type	Isolate ID	Collection date
EU856866	FluA_H3N2_HA	A/Hong Kong/CUHK13763/1999(H3N2)	May-1999
EU856867	FluA_H3N2_HA	A/Hong Kong/CUHK14627/1999(H3N2)	Jun-1999
EU856868	FluA_H3N2_HA	A/Hong Kong/CUHK14672/1999(H3N2)	Jun-1999
EU856869	FluA_H3N2_HA	A/Hong Kong/CUHK14875/1999(H3N2)	Jun-1999
EU856870	FluA_H3N2_HA	A/Hong Kong/CUHK14999/2005(H3N2)	Jun-2005
EU856871	FluA_H3N2_HA	A/Hong Kong/CUHK16614/1998(H3N2)	Jul-1998
EU856872	FluA_H3N2_HA	A/Hong Kong/CUHK17464/1998(H3N2)	Aug-1998
EU856873	FluA_H3N2_HA	A/Hong Kong/CUHK17603/1998(H3N2)	Aug-1998
EU856875	FluA_H3N2_HA	A/Hong Kong/CUHK17697/1998(H3N2)	Aug-1998
EU856876	FluA_H3N2_HA	A/Hong Kong/CUHK17704/1998(H3N2)	Aug-1998
EU856877	FluA_H3N2_HA	A/Hong Kong/CUHK17707/1998(H3N2)	Aug-1998
EU856878	FluA_H3N2_HA	A/Hong Kong/CUHK17872/1998(H3N2)	Aug-1998
EU856879	FluA_H3N2_HA	A/Hong Kong/CUHK18036/1998(H3N2)	Aug-1998
EU856880	FluA_H3N2_HA	A/Hong Kong/CUHK18194/1998(H3N2)	Sep-1998
EU856881	FluA_H3N2_HA	A/Hong Kong/CUHK18218/1998(H3N2)	Sep-1998
EU856882	FluA_H3N2_HA	A/Hong Kong/CUHK18230/1998(H3N2)	Sep-1998
EU856883	FluA_H3N2_HA	A/Hong Kong/CUHK18351/1998(H3N2)	Sep-1998
EU856884	FluA_H3N2_HA	A/Hong Kong/CUHK18358/1998(H3N2)	Sep-1998
EU856885	FluA_H3N2_HA	A/Hong Kong/CUHK18610/1998(H3N2)	Sep-1998
EU856886	FluA_H3N2_HA	A/Hong Kong/CUHK18886/1998(H3N2)	Oct-1998
EU856887	FluA_H3N2_HA	A/Hong Kong/CUHK19579/1998(H3N2)	Nov-1998
EU856888	FluA_H3N2_HA	A/Hong Kong/CUHK20010/1997(H3N2)	Jun-1997
EU856889	FluA_H3N2_HA	A/Hong Kong/CUHK20169/2000(H3N2)	Jan-2000
EU856890	FluA_H3N2_HA	A/Hong Kong/CUHK20173/2000(H3N2)	Jan-2000
EU856891	FluA_H3N2_HA	A/Hong Kong/CUHK20199/1997(H3N2)	Jul-1997
EU856892	FluA_H3N2_HA	A/Hong Kong/CUHK20200/2000(H3N2)	Jan-2000
EU856893	FluA_H3N2_HA	A/Hong Kong/CUHK20213/1997(H3N2)	Jul-1997
EU856894	FluA_H3N2_HA	A/Hong Kong/CUHK20217/1997(H3N2)	Jul-1997
EU856895	FluA_H3N2_HA	A/Hong Kong/CUHK20236/1997(H3N2)	Jul-1997
EU856896	FluA_H3N2_HA	A/Hong Kong/CUHK20292/2000(H3N2)	Jan-2000
EU856897	FluA_H3N2_HA	A/Hong Kong/CUHK20294/2000(H3N2)	Jan-2000
EU856898	FluA_H3N2_HA	A/Hong Kong/CUHK20300/2000(H3N2)	Jan-2000
EU856899	FluA_H3N2_HA	A/Hong Kong/CUHK20320/1997(H3N2)	Jul-1997
EU856900	FluA_H3N2_HA	A/Hong Kong/CUHK20523/1997(H3N2)	Jul-1997
EU856901	FluA_H3N2_HA	A/Hong Kong/CUHK20731/1997(H3N2)	Jul-1997
EU856902	FluA_H3N2_HA	A/Hong Kong/CUHK20992/1997(H3N2)	Aug-1997
EU856903	FluA_H3N2_HA	A/Hong Kong/CUHK21124/2000(H3N2)	Feb-2000
EU856905	FluA_H3N2_HA	A/Hong Kong/CUHK21132/2000(H3N2)	Feb-2000
EU856906	FluA_H3N2_HA	A/Hong Kong/CUHK21164/2004(H3N2)	Feb-2004
EU856907	FluA_H3N2_HA	A/Hong Kong/CUHK21226/2001(H3N2)	Apr-2001
EU856908	FluA_H3N2_HA	A/Hong Kong/CUHK21250/2000(H3N2)	Feb-2000
EU856909	FluA_H3N2_HA	A/Hong Kong/CUHK21259/2004(H3N2)	Feb-2004
EU856910	FluA_H3N2_HA	A/Hong Kong/CUHK21421/2001(H3N2)	Apr-2001
EU856911	FluA_H3N2_HA	A/Hong Kong/CUHK21582/2002(H3N2)	Apr-2002
EU856912	FluA_H3N2_HA	A/Hong Kong/CUHK21675/2001(H3N2)	Apr-2001
EU856913	FluA_H3N2_HA	A/Hong Kong/CUHK21713/2002(H3N2)	Apr-2002
EU856914	FluA_H3N2_HA	A/Hong Kong/CUHK21733/2001(H3N2)	Apr-2001
EU856915	FluA_H3N2_HA	A/Hong Kong/CUHK21734/2001(H3N2)	Apr-2001
EU856916	FluA_H3N2_HA	A/Hong Kong/CUHK21742/2002(H3N2)	Apr-2002
EU856918	FluA_H3N2_HA	A/Hong Kong/CUHK021932/2001(H3N2)	Apr-2001
EU856919	FluA_H3N2_HA	A/Hong Kong/CUHK21957/2002(H3N2)	Apr-2002
EU856920	FluA_H3N2_HA	A/Hong Kong/CUHK22013/1997(H3N2)	Aug-1997
EU856921	FluA_H3N2_HA	A/Hong Kong/CUHK22048/1997(H3N2)	Aug-1997
EU856922	FluA_H3N2_HA	A/Hong Kong/CUHK22072/2000(H3N2)	Mar-2000
EU856923	FluA_H3N2_HA	A/Hong Kong/CUHK22078/2000(H3N2)	Mar-2000
EU856924	FluA_H3N2_HA	A/Hong Kong/CUHK22087/2000(H3N2)	Mar-2000
EU856925	FluA_H3N2_HA	A/Hong Kong/CUHK22162/2000(H3N2)	Mar-2000
EU856926	FluA_H3N2_HA	A/Hong Kong/CUHK22163/2000(H3N2)	Mar-2000
EU856928	FluA_H3N2_HA	A/Hong Kong/CUHK22510/2004(H3N2)	Mar-2004
EU856929	FluA_H3N2_HA	A/Hong Kong/CUHK22567/2004(H3N2)	Mar-2004
EU856930	FluA_H3N2_HA	A/Hong Kong/CUHK22644/2001(H3N2)	May-2001
EU856931	FluA_H3N2_HA	A/Hong Kong/CUHK22736/1997(H3N2)	Sep-1997
EU856932	FluA_H3N2_HA	A/Hong Kong/CUHK22888/2001(H3N2)	May-2001
EU856933	FluA_H3N2_HA	A/Hong Kong/CUHK23111/2002(H3N2)	May-2002
EU856934	FluA_H3N2_HA	A/Hong Kong/CUHK23113/2002(H3N2)	May-2002
EU856935	FluA_H3N2_HA	A/Hong Kong/CUHK23162/2002(H3N2)	May-2002
EU856936	FluA_H3N2_HA	A/Hong Kong/CUHK23180/2002(H3N2)	May-2002
EU856937	FluA_H3N2_HA	A/Hong Kong/CUHK24044/2002(H3N2)	Jun-2002
EU856938	FluA_H3N2_HA	A/Hong Kong/CUHK24054/2002(H3N2)	Jun-2002

GenBank accession no.	Type	Isolate ID	Collection date
EU856939	FluA_H3N2_HA	A/Hong Kong/CUHK24114/2002(H3N2)	Jun-2002
EU856940	FluA_H3N2_HA	A/Hong Kong/CUHK24167/2002(H3N2)	Jun-2002
EU856942	FluA_H3N2_HA	A/Hong Kong/CUHK24289/2004(H3N2)	Apr-2004
EU856944	FluA_H3N2_HA	A/Hong Kong/CUHK24447/2004(H3N2)	Apr-2004
EU856945	FluA_H3N2_HA	A/Hong Kong/CUHK24510/2001(H3N2)	Jul-2001
EU856946	FluA_H3N2_HA	A/Hong Kong/CUHK24749/2001(H3N2)	Jul-2001
EU856947	FluA_H3N2_HA	A/Hong Kong/CUHK24760/2001(H3N2)	Jul-2001
EU856948	FluA_H3N2_HA	A/Hong Kong/CUHK24825/2001(H3N2)	Jul-2001
EU856949	FluA_H3N2_HA	A/Hong Kong/CUHK24882/2001(H3N2)	Jul-2001
EU856950	FluA_H3N2_HA	A/Hong Kong/CUHK24985/2001(H3N2)	Jul-2001
EU856951	FluA_H3N2_HA	A/Hong Kong/CUHK26805/2000(H3N2)	Jul-2000
EU856952	FluA_H3N2_HA	A/Hong Kong/CUHK26846/2000(H3N2)	Jul-2000
EU856953	FluA_H3N2_HA	A/Hong Kong/CUHK26907/2000(H3N2)	Jul-2000
EU856954	FluA_H3N2_HA	A/Hong Kong/CUHK26969/2000(H3N2)	Jul-2000
EU856956	FluA_H3N2_HA	A/Hong Kong/CUHK27157/2000(H3N2)	Aug-2000
EU856957	FluA_H3N2_HA	A/Hong Kong/CUHK27183/2000(H3N2)	Aug-2000
EU856959	FluA_H3N2_HA	A/Hong Kong/CUHK27374/2000(H3N2)	Aug-2000
EU856960	FluA_H3N2_HA	A/Hong Kong/CUHK28038/2000(H3N2)	Sep-2000
EU856961	FluA_H3N2_HA	A/Hong Kong/CUHK28040/2000(H3N2)	Sep-2000
EU856965	FluA_H3N2_HA	A/Hong Kong/CUHK30314/1999(H3N2)	Jul-1999
EU856966	FluA_H3N2_HA	A/Hong Kong/CUHK30419/1999(H3N2)	Jul-1999
EU856968	FluA_H3N2_HA	A/Hong Kong/CUHK30605/1999(H3N2)	Jul-1999
EU856969	FluA_H3N2_HA	A/Hong Kong/CUHK31421/1999(H3N2)	Aug-1999
EU856970	FluA_H3N2_HA	A/Hong Kong/CUHK31448/1999(H3N2)	Aug-1999
EU856971	FluA_H3N2_HA	A/Hong Kong/CUHK31490/1999(H3N2)	Aug-1999
EU856972	FluA_H3N2_HA	A/Hong Kong/CUHK31510/1999(H3N2)	Aug-1999
EU856973	FluA_H3N2_HA	A/Hong Kong/CUHK32796/1999(H3N2)	Sep-1999
EU856974	FluA_H3N2_HA	A/Hong Kong/CUHK33047/2002(H3N2)	Jul-2002
EU856975	FluA_H3N2_HA	A/Hong Kong/CUHK33079/2002(H3N2)	Jul-2002
EU856976	FluA_H3N2_HA	A/Hong Kong/CUHK33106/2002(H3N2)	Jul-2002
EU856977	FluA_H3N2_HA	A/Hong Kong/CUHK33199/2002(H3N2)	Jul-2002
EU856978	FluA_H3N2_HA	A/Hong Kong/CUHK33316/2001(H3N2)	Aug-2001
EU856979	FluA_H3N2_HA	A/Hong Kong/CUHK33406/2001(H3N2)	Aug-2001
EU856980	FluA_H3N2_HA	A/Hong Kong/CUHK33416/2001(H3N2)	Aug-2001
EU856981	FluA_H3N2_HA	A/Hong Kong/CUHK33418/2001(H3N2)	Aug-2001
EU856982	FluA_H3N2_HA	A/Hong Kong/CUHK33677/2004(H3N2)	May-2004
EU856983	FluA_H3N2_HA	A/Hong Kong/CUHK33829/1999(H3N2)	Oct-1999
EU856984	FluA_H3N2_HA	A/Hong Kong/CUHK33851/2004(H3N2)	May-2004
EU856986	FluA_H3N2_HA	A/Hong Kong/CUHK33894/2004(H3N2)	May-2004
EU856987	FluA_H3N2_HA	A/Hong Kong/CUHK33915/1999(H3N2)	Oct-1999
EU856988	FluA_H3N2_HA	A/Hong Kong/CUHK34114/2001(H3N2)	Aug-2001
EU856989	FluA_H3N2_HA	A/Hong Kong/CUHK34175/2002(H3N2)	Aug-2002
EU856990	FluA_H3N2_HA	A/Hong Kong/CUHK34193/2002(H3N2)	Feb-2002
EU856992	FluA_H3N2_HA	A/Hong Kong/CUHK35011/2004(H3N2)	Jun-2004
EU856993	FluA_H3N2_HA	A/Hong Kong/CUHK35013/2004(H3N2)	Jun-2004
EU856994	FluA_H3N2_HA	A/Hong Kong/CUHK35117/2004(H3N2)	Jun-2004
EU856995	FluA_H3N2_HA	A/Hong Kong/CUHK35435/2004(H3N2)	Jun-2004
EU856996	FluA_H3N2_HA	A/Hong Kong/CUHK40022/2005(H3N2)	Jun-2005
EU856997	FluA_H3N2_HA	A/Hong Kong/CUHK40139/2005(H3N2)	Jun-2005
EU857001	FluA_H3N2_HA	A/Hong Kong/CUHK41114/1997(H3N2)	Dec-1997
EU857002	FluA_H3N2_HA	A/Hong Kong/CUHK41222/1997(H3N2)	Dec-1997
EU857003	FluA_H3N2_HA	A/Hong Kong/CUHK41459/1997(H3N2)	Dec-1997
EU857004	FluA_H3N2_HA	A/Hong Kong/CUHK41477/1997(H3N2)	Mar-1997
EU857006	FluA_H3N2_HA	A/Hong Kong/CUHK41757/1997(H3N2)	Dec-1997
EU857007	FluA_H3N2_HA	A/Hong Kong/CUHK42241/2005(H3N2)	Jul-2005
EU857008	FluA_H3N2_HA	A/Hong Kong/CUHK4245/1997(H3N2)	Mar-1997
EU857009	FluA_H3N2_HA	A/Hong Kong/CUHK42644/2005(H3N2)	Jul-2005
EU857010	FluA_H3N2_HA	A/Hong Kong/CUHK42763/2005(H3N2)	Jul-2005
EU857011	FluA_H3N2_HA	A/Hong Kong/CUHK43751/2005(H3N2)	Jul-2005
EU857012	FluA_H3N2_HA	A/Hong Kong/CUHK4391/1997(H3N2)	Mar-1997
EU857013	FluA_H3N2_HA	A/Hong Kong/CUHK45130/2006(H3N2)	Dec-2006
EU857014	FluA_H3N2_HA	A/Hong Kong/CUHK4529/1997(H3N2)	Apr-1997
EU857018	FluA_H3N2_HA	A/Hong Kong/CUHK50080/2001(H3N2)	Nov-2001
EU857019	FluA_H3N2_HA	A/Hong Kong/CUHK50200/2002(H3N2)	Oct-2002
EU857021	FluA_H3N2_HA	A/Hong Kong/CUHK50372/2004(H3N2)	Jul-2004
EU857022	FluA_H3N2_HA	A/Hong Kong/CUHK50552/1998(H3N2)	Dec-1998
EU857023	FluA_H3N2_HA	A/Hong Kong/CUHK50563/2004(H3N2)	Jul-2004
EU857024	FluA_H3N2_HA	A/Hong Kong/CUHK50600/2004(H3N2)	Jul-2004
EU857025	FluA_H3N2_HA	A/Hong Kong/CUHK50722/1998(H3N2)	Dec-1998

GenBank accession no.	Type	Isolate ID	Collection date
EU857026	FluA_H3N2_HA	A/Hong Kong/CUHK50895/2003(H3N2)	Jul-2003
EU857027	FluA_H3N2_HA	A/Hong Kong/CUHK50952/2003(H3N2)	Jul-2003
EU857028	FluA_H3N2_HA	A/Hong Kong/CUHK5111/2003(H3N2)	Jan-2003
EU857029	FluA_H3N2_HA	A/Hong Kong/CUHK51353/2003(H3N2)	Jul-2003
EU857030	FluA_H3N2_HA	A/Hong Kong/CUHK51380/2003(H3N2)	Jul-2003
EU857031	FluA_H3N2_HA	A/Hong Kong/CUHK51424/2001(H3N2)	Dec-2001
EU857032	FluA_H3N2_HA	A/Hong Kong/CUHK51431/2001(H3N2)	Dec-2001
EU857033	FluA_H3N2_HA	A/Hong Kong/CUHK51490/2001(H3N2)	Dec-2001
EU857035	FluA_H3N2_HA	A/Hong Kong/CUHK52011/2003(H3N2)	Aug-2003
EU857036	FluA_H3N2_HA	A/Hong Kong/CUHK52247/2000(H3N2)	Dec-2000
EU857037	FluA_H3N2_HA	A/Hong Kong/CUHK52274/2004(H3N2)	Aug-2004
EU857038	FluA_H3N2_HA	A/Hong Kong/CUHK52390/2004(H3N2)	Aug-2004
EU857039	FluA_H3N2_HA	A/Hong Kong/CUHK52467/2003(H3N2)	Aug-2003
EU857040	FluA_H3N2_HA	A/Hong Kong/CUHK5250/2002(H3N2)	Jan-2002
EU857041	FluA_H3N2_HA	A/Hong Kong/CUHK5251/2002(H3N2)	Jan-2002
EU857044	FluA_H3N2_HA	A/Hong Kong/CUHK52923/2003(H3N2)	Aug-2003
EU857045	FluA_H3N2_HA	A/Hong Kong/CUHK52941/2004(H3N2)	Aug-2004
EU857046	FluA_H3N2_HA	A/Hong Kong/CUHK5296/2002(H3N2)	Jan-2002
EU857047	FluA_H3N2_HA	A/Hong Kong/CUHK5300/2005(H3N2)	Jan-2005
EU857048	FluA_H3N2_HA	A/Hong Kong/CUHK53004/2006(H3N2)	Mar-2006
EU857050	FluA_H3N2_HA	A/Hong Kong/CUHK53123/2002(H3N2)	Dec-2002
EU857052	FluA_H3N2_HA	A/Hong Kong/CUHK53327/2002(H3N2)	Dec-2002
EU857053	FluA_H3N2_HA	A/Hong Kong/CUHK53726/2004(H3N2)	Sep-2004
EU857054	FluA_H3N2_HA	A/Hong Kong/CUHK53732/2004(H3N2)	Sep-2004
EU857055	FluA_H3N2_HA	A/Hong Kong/CUHK53766/2004(H3N2)	Sep-2004
EU857057	FluA_H3N2_HA	A/Hong Kong/CUHK53907/2006(H3N2)	Mar-2006
EU857058	FluA_H3N2_HA	A/Hong Kong/CUHK5567/2005(H3N2)	Jan-2005
EU857059	FluA_H3N2_HA	A/Hong Kong/CUHK5627/2003(H3N2)	Jan-2003
EU857061	FluA_H3N2_HA	A/Hong Kong/CUHK5723/2003(H3N2)	Jan-2003
EU857062	FluA_H3N2_HA	A/Hong Kong/CUHK60052/2006(H3N2)	Jun-2006
EU857063	FluA_H3N2_HA	A/Hong Kong/CUHK6205/2003(H3N2)	Feb-2003
EU857064	FluA_H3N2_HA	A/Hong Kong/CUHK6206/2002(H3N2)	Feb-2002
EU857066	FluA_H3N2_HA	A/Hong Kong/CUHK6262/2003(H3N2)	Feb-2003
EU857067	FluA_H3N2_HA	A/Hong Kong/CUHK6377/2003(H3N2)	Feb-2003
EU857068	FluA_H3N2_HA	A/Hong Kong/CUHK6383/2003(H3N2)	Feb-2003
EU857070	FluA_H3N2_HA	A/Hong Kong/CUHK64082/2006(H3N2)	Sep-2006
EU857071	FluA_H3N2_HA	A/Hong Kong/CUHK6422/2005(H3N2)	Jan-2005
EU857072	FluA_H3N2_HA	A/Hong Kong/CUHK6427/2003(H3N2)	Feb-2003
EU857074	FluA_H3N2_HA	A/Hong Kong/CUHK65241/2006(H3N2)	Sep-2006
EU857076	FluA_H3N2_HA	A/Hong Kong/CUHK66001/2006(H3N2)	Oct-2006
EU857078	FluA_H3N2_HA	A/Hong Kong/CUHK68792/2006(H3N2)	Dec-2006
EU857079	FluA_H3N2_HA	A/Hong Kong/CUHK6898/2005(H3N2)	Feb-2005
EU857080	FluA_H3N2_HA	A/Hong Kong/CUHK69904/2006(H3N2)	Dec-2006
EU857081	FluA_H3N2_HA	A/Hong Kong/CUHK70435/2003(H3N2)	Sep-2003
EU857082	FluA_H3N2_HA	A/Hong Kong/CUHK7047/2005(H3N2)	Feb-2005
EU857083	FluA_H3N2_HA	A/Hong Kong/CUHK71313/2003(H3N2)	Sep-2003
EU857084	FluA_H3N2_HA	A/Hong Kong/CUHK72014/2003(H3N2)	Sep-2003
EU857085	FluA_H3N2_HA	A/Hong Kong/CUHK7221/2005(H3N2)	Feb-2005
EU857086	FluA_H3N2_HA	A/Hong Kong/CUHK74438/2003(H3N2)	Nov-2003
EU857087	FluA_H3N2_HA	A/Hong Kong/CUHK74457/2003(H3N2)	Nov-2003
EU857088	FluA_H3N2_HA	A/Hong Kong/CUHK7546/2005(H3N2)	Feb-2005
EU857089	FluA_H3N2_HA	A/Hong Kong/CUHK75994/2003(H3N2)	Dec-2003
EU857090	FluA_H3N2_HA	A/Hong Kong/CUHK7670/2005(H3N2)	Mar-2005
EU857093	FluA_H3N2_HA	A/Hong Kong/CUHK8333/2005(H3N2)	Mar-2005
EU857094	FluA_H3N2_HA	A/Hong Kong/CUHK83422/2003(H3N2)	Dec-2003
MF955212	FluA_H3N2_HA	A/Hong Kong/CUHK27868/2011(H3N2)	Sep-2011
MF955213	FluA_H3N2_HA	A/Hong Kong/CUHK59603/2009(H3N2)	Apr-2009
MF955214	FluA_H3N2_HA	A/Hong Kong/CUHK41162/2010(H3N2)	Sep-2010
MF955215	FluA_H3N2_HA	A/Hong Kong/CUHK18263/1996(H3N2)	Jun-1996
MF955216	FluA_H3N2_HA	A/Hong Kong/CUHK66043/2008(H3N2)	Apr-2008
MF955217	FluA_H3N2_HA	A/Hong Kong/CUHK42826/2007(H3N2)	Sep-2007
MF955218	FluA_H3N2_HA	A/Hong Kong/CUHK32398/2011(H3N2)	Dec-2011
MF955219	FluA_H3N2_HA	A/Hong Kong/CUHK03421/1996(H3N2)	Mar-1996
MF955220	FluA_H3N2_HA	A/Hong Kong/CUHK43773/2012(H3N2)	Sep-2012
MF955221	FluA_H3N2_HA	A/Hong Kong/CUHK49134/2012(H3N2)	Dec-2012
MF955222	FluA_H3N2_HA	A/Hong Kong/CUHK74487/2008(H3N2)	Aug-2008
MF955223	FluA_H3N2_HA	A/Hong Kong/CUHK10703/1996(H3N2)	Mar-1996
MF955224	FluA_H3N2_HA	A/Hong Kong/CUHK28267/2011(H3N2)	Sep-2011
MF955225	FluA_H3N2_HA	A/Hong Kong/CUHK03367/1996(H3N2)	Mar-1996

GenBank accession no.	Type	Isolate ID	Collection date
MF955226	FluA_H3N2_HA	A/Hong Kong/CUHK68950/2008(H3N2)	May-2008
MF955227	FluA_H3N2_HA	A/Hong Kong/CUHK70724/2009(H3N2)	Apr-2009
MF955228	FluA_H3N2_HA	A/Hong Kong/CUHK40360/2010(H3N2)	Sep-2010
MF955229	FluA_H3N2_HA	A/Hong Kong/CUHK41243/2012(H3N2)	Aug-2012
MF955230	FluA_H3N2_HA	A/Hong Kong/CUHK35729/2012(H3N2)	May-2012
MF955231	FluA_H3N2_HA	A/Hong Kong/CUHK21764/1996(H3N2)	Jun-1996
MF955232	FluA_H3N2_HA	A/Hong Kong/CUHK17970/1996(H3N2)	May-1996
MF955233	FluA_H3N2_HA	A/Hong Kong/CUHK41913/2012(H3N2)	Aug-2012
MF955234	FluA_H3N2_HA	A/Hong Kong/CUHK47352/2012(H3N2)	Nov-2012
MF955235	FluA_H3N2_HA	A/Hong Kong/CUHK62335/2008(H3N2)	Feb-2008
MF955236	FluA_H3N2_HA	A/Hong Kong/CUHK65310/2008(H3N2)	Mar-2008
MF955237	FluA_H3N2_HA	A/Hong Kong/CUHK72035/2008(H3N2)	Jul-2008
MF955238	FluA_H3N2_HA	A/Hong Kong/CUHK61355/2007(H3N2)	Jan-2007
MF955239	FluA_H3N2_HA	A/Hong Kong/CUHK62203/2007(H3N2)	Feb-2007
MF955240	FluA_H3N2_HA	A/Hong Kong/CUHK62842/2007(H3N2)	Feb-2007
MF955241	FluA_H3N2_HA	A/Hong Kong/CUHK35004/2012(H3N2)	May-2012
MF955242	FluA_H3N2_HA	A/Hong Kong/CUHK72058/2009(H3N2)	May-2009
MF955243	FluA_H3N2_HA	A/Hong Kong/CUHK39813/2010(H3N2)	Aug-2010
MF955244	FluA_H3N2_HA	A/Hong Kong/CUHK71449/2009(H3N2)	Apr-2009
MF955245	FluA_H3N2_HA	A/Hong Kong/CUHK77585/2008(H3N2)	Sep-2008
MF955246	FluA_H3N2_HA	A/Hong Kong/CUHK66598/2009(H3N2)	Jan-2009
MF955247	FluA_H3N2_HA	A/Hong Kong/CUHK43402/2010(H3N2)	Oct-2010
MF955248	FluA_H3N2_HA	A/Hong Kong/CUHK27565/2012(H3N2)	Feb-2012
MF955249	FluA_H3N2_HA	A/Hong Kong/CUHK33530/2011(H3N2)	Dec-2011
MF955250	FluA_H3N2_HA	A/Hong Kong/CUHK26783/2011(H3N2)	Aug-2011
MF955251	FluA_H3N2_HA	A/Hong Kong/CUHK33163/2011(H3N2)	Dec-2011
MF955252	FluA_H3N2_HA	A/Hong Kong/CUHK66798/2007(H3N2)	Apr-2007
MF955253	FluA_H3N2_HA	A/Hong Kong/CUHK64331/2007(H3N2)	Mar-2007
MF955254	FluA_H3N2_HA	A/Hong Kong/CUHK69991/2007(H3N2)	Jun-2007
MF955255	FluA_H3N2_HA	A/Hong Kong/CUHK74215/2008(H3N2)	Aug-2008
MF955256	FluA_H3N2_HA	A/Hong Kong/CUHK73440/2008(H3N2)	Jul-2008
MF955257	FluA_H3N2_HA	A/Hong Kong/CUHK70458/2008(H3N2)	Jun-2008
MF955258	FluA_H3N2_HA	A/Hong Kong/CUHK72215/2008(H3N2)	Jul-2008
MF955259	FluA_H3N2_HA	A/Hong Kong/CUHK39450/2012(H3N2)	Jul-2012
MF955260	FluA_H3N2_HA	A/Hong Kong/CUHK45712/2012(H3N2)	Oct-2012
MF955261	FluA_H3N2_HA	A/Hong Kong/CUHK15232/1996(H3N2)	Apr-1996
MF955262	FluA_H3N2_HA	A/Hong Kong/CUHK44756/2010(H3N2)	Nov-2010
MF955263	FluA_H3N2_HA	A/Hong Kong/CUHK46938/2010(H3N2)	Dec-2010
MF955264	FluA_H3N2_HA	A/Hong Kong/CUHK32113/2011(H3N2)	Dec-2011
MF955265	FluA_H3N2_HA	A/Hong Kong/CUHK15308/1996(H3N2)	Apr-1996
MF955266	FluA_H3N2_HA	A/Hong Kong/CUHK21932/1996(H3N2)	Jun-1996
MF955267	FluA_H3N2_HA	A/Hong Kong/CUHK29206/1996(H3N2)	Sep-1996
MF955268	FluA_H3N2_HA	A/Hong Kong/CUHK72075/2009(H3N2)	May-2009
MF955269	FluA_H3N2_HA	A/Hong Kong/CUHK73167/2009(H3N2)	May-2009
MF955270	FluA_H3N2_HA	A/Hong Kong/CUHK40227/2010(H3N2)	Sep-2010
MF955271	FluA_H3N2_HA	A/Hong Kong/CUHK80068/2008(H3N2)	Nov-2008
MF955272	FluA_H3N2_HA	A/Hong Kong/CUHK59944/2009(H3N2)	May-2009
MF955273	FluA_H3N2_HA	A/Hong Kong/CUHK67251/2009(H3N2)	Jan-2009
MF955274	FluA_H3N2_HA	A/Hong Kong/CUHK25423/2011(H3N2)	Jul-2011
MF955275	FluA_H3N2_HA	A/Hong Kong/CUHK30771/2011(H3N2)	Nov-2011
MF955276	FluA_H3N2_HA	A/Hong Kong/CUHK31374/2011(H3N2)	Nov-2011
MF955277	FluA_H3N2_HA	A/Hong Kong/CUHK40759/2010(H3N2)	Sep-2010
MF955278	FluA_H3N2_HA	A/Hong Kong/CUHK44339/2010(H3N2)	Nov-2010
MF955279	FluA_H3N2_HA	A/Hong Kong/CUHK23961/2011(H3N2)	Jun-2011
MF955280	FluA_H3N2_HA	A/Hong Kong/CUHK67413/2008(H3N2)	Apr-2008
MF955281	FluA_H3N2_HA	A/Hong Kong/CUHK60258/2007(H3N2)	Jan-2007
MF955282	FluA_H3N2_HA	A/Hong Kong/CUHK62981/2007(H3N2)	Feb-2007
MF955283	FluA_H3N2_HA	A/Hong Kong/CUHK72228/2007(H3N2)	Jul-2007
MF955284	FluA_H3N2_HA	A/Hong Kong/CUHK73588/2007(H3N2)	Aug-2007
MF955285	FluA_H3N2_HA	A/Hong Kong/CUHK66092/2008(H3N2)	Apr-2008
MF955286	FluA_H3N2_HA	A/Hong Kong/CUHK63130/2007(H3N2)	Feb-2007
MF955287	FluA_H3N2_HA	A/Hong Kong/CUHK66156/2007(H3N2)	Apr-2007
MF955288	FluA_H3N2_HA	A/Hong Kong/CUHK71638/2007(H3N2)	Jul-2007
MF955289	FluA_H3N2_HA	A/Hong Kong/CUHK41897/2010(H3N2)	Sep-2010
MF955290	FluA_H3N2_HA	A/Hong Kong/CUHK15154/1996(H3N2)	Apr-1996
MF955291	FluA_H3N2_HA	A/Hong Kong/CUHK21907/1996(H3N2)	Jun-1996
MF955292	FluA_H3N2_HA	A/Hong Kong/CUHK21971/1996(H3N2)	Jan-1996
MF955293	FluA_H3N2_HA	A/Hong Kong/CUHK03269/1996(H3N2)	Mar-1996
MF955294	FluA_H3N2_HA	A/Hong Kong/CUHK38327/2010(H3N2)	Jul-2010

GenBank accession no.	Type	Isolate ID	Collection date
MF955295	FluA_H3N2_HA	A/Hong Kong/CUHK42094/2010(H3N2)	Sep-2010
MF955296	FluA_H3N2_HA	A/Hong Kong/CUHK20677/2011(H3N2)	Apr-2011
MF955297	FluA_H3N2_HA	A/Hong Kong/CUHK72474/2008(H3N2)	Jul-2008
MF955298	FluA_H3N2_HA	A/Hong Kong/CUHK69295/2009(H3N2)	Mar-2009
MF955299	FluA_H3N2_HA	A/Hong Kong/CUHK36548/2010(H3N2)	Jun-2010
MF955300	FluA_H3N2_HA	A/Hong Kong/CUHK30631/2012(H3N2)	Mar-2012
MF955301	FluA_H3N2_HA	A/Hong Kong/CUHK40597/2012(H3N2)	Jul-2012
MF955302	FluA_H3N2_HA	A/Hong Kong/CUHK41586/2012(H3N2)	Aug-2012
MF955303	FluA_H3N2_HA	A/Hong Kong/CUHK23993/2011(H3N2)	Jun-2011
MF955304	FluA_H3N2_HA	A/Hong Kong/CUHK29342/2011(H3N2)	Oct-2011
MF955305	FluA_H3N2_HA	A/Hong Kong/CUHK28838/2012(H3N2)	Feb-2012
MF955306	FluA_H3N2_HA	A/Hong Kong/CUHK72836/2008(H3N2)	Jul-2008
MF955307	FluA_H3N2_HA	A/Hong Kong/CUHK74704/2008(H3N2)	Aug-2008
MF955308	FluA_H3N2_HA	A/Hong Kong/CUHK67380/2009(H3N2)	Jan-2009
MF955309	FluA_H3N2_HA	A/Hong Kong/CUHK65050/2007(H3N2)	Mar-2007
MF955310	FluA_H3N2_HA	A/Hong Kong/CUHK72318/2008(H3N2)	Jul-2008
MF955311	FluA_H3N2_HA	A/Hong Kong/CUHK39295/2010(H3N2)	Aug-2010
MF955312	FluA_H3N2_HA	A/Hong Kong/CUHK39459/2010(H3N2)	Aug-2010
MF955313	FluA_H3N2_HA	A/Hong Kong/CUHK41743/2010(H3N2)	Sep-2010
MF955314	FluA_H3N2_HA	A/Hong Kong/CUHK68016/2009(H3N2)	Feb-2009
MF955315	FluA_H3N2_HA	A/Hong Kong/CUHK73723/2009(H3N2)	Jun-2009
MF955316	FluA_H3N2_HA	A/Hong Kong/CUHK36649/2010(H3N2)	Jun-2010
MF955317	FluA_H3N2_HA	A/Hong Kong/CUHK14229/2011(H3N2)	Jan-2011
MF955318	FluA_H3N2_HA	A/Hong Kong/CUHK16933/2011(H3N2)	Feb-2011
MF955319	FluA_H3N2_HA	A/Hong Kong/CUHK29096/2011(H3N2)	Oct-2011
MF955320	FluA_H3N2_HA	A/Hong Kong/CUHK73629/2009(H3N2)	Jun-2009
MF955321	FluA_H3N2_HA	A/Hong Kong/CUHK38606/2010(H3N2)	Aug-2010
MF955322	FluA_H3N2_HA	A/Hong Kong/CUHK39699/2010(H3N2)	Aug-2010
MF955323	FluA_H3N2_HA	A/Hong Kong/CUHK28253/2012(H3N2)	Feb-2012
MF955324	FluA_H3N2_HA	A/Hong Kong/CUHK33681/2012(H3N2)	Apr-2012
MF955325	FluA_H3N2_HA	A/Hong Kong/CUHK40215/2012(H3N2)	Jul-2012
MF955326	FluA_H3N2_HA	A/Hong Kong/CUHK31702/2011(H3N2)	Nov-2011
MF955327	FluA_H3N2_HA	A/Hong Kong/CUHK31982/2011(H3N2)	Nov-2011
MF955328	FluA_H3N2_HA	A/Hong Kong/CUHK26268/2012(H3N2)	Jan-2012
MF955329	FluA_H3N2_HA	A/Hong Kong/CUHK72079/2009(H3N2)	May-2009
MF955330	FluA_H3N2_HA	A/Hong Kong/CUHK63441/2007(H3N2)	Mar-2007
MF955331	FluA_H3N2_HA	A/Hong Kong/CUHK78641/2008(H3N2)	Oct-2008
MF955332	FluA_H3N2_HA	A/Hong Kong/CUHK67726/2009(H3N2)	Feb-2009
MF955333	FluA_H3N2_HA	A/Hong Kong/CUHK70258/2009(H3N2)	Mar-2009
MF955334	FluA_H3N2_HA	A/Hong Kong/CUHK63676/2007(H3N2)	Mar-2007
MF955335	FluA_H3N2_HA	A/Hong Kong/CUHK71881/2008(H3N2)	Jul-2008
MF955336	FluA_H3N2_HA	A/Hong Kong/CUHK73144/2008(H3N2)	Jul-2008
MF955337	FluA_H3N2_HA	A/Hong Kong/CUHK18334/1996(H3N2)	Jun-1996
MF955338	FluA_H3N2_HA	A/Hong Kong/CUHK10886/1996(H3N2)	Apr-1996
MF955339	FluA_H3N2_HA	A/Hong Kong/CUHK29537/2011(H3N2)	Oct-2011
MF955340	FluA_H3N2_HA	A/Hong Kong/CUHK29782/2011(H3N2)	Oct-2011
MF955341	FluA_H3N2_HA	A/Hong Kong/CUHK06513/2012(H3N2)	Jan-2012
MF955342	FluA_H3N2_HA	A/Hong Kong/CUHK24671/2011(H3N2)	Jul-2011
MF955343	FluA_H3N2_HA	A/Hong Kong/CUHK28795/2011(H3N2)	Sep-2011
MF955344	FluA_H3N2_HA	A/Hong Kong/CUHK28994/2011(H3N2)	Oct-2011
MF955345	FluA_H3N2_HA	A/Hong Kong/CUHK48508/2012(H3N2)	Dec-2012
MF955346	FluA_H3N2_HA	A/Hong Kong/CUHK10954/1996(H3N2)	Apr-1996
MF955347	FluA_H3N2_HA	A/Hong Kong/CUHK18325/1996(H3N2)	Jun-1996
MF955348	FluA_H3N2_HA	A/Hong Kong/CUHK26560/2012(H3N2)	Jan-2012
MF955349	FluA_H3N2_HA	A/Hong Kong/CUHK37322/2012(H3N2)	Jun-2012
MF955350	FluA_H3N2_HA	A/Hong Kong/CUHK38000/2012(H3N2)	Jun-2012
MF955351	FluA_H3N2_HA	A/Hong Kong/CUHK45722/2010(H3N2)	Dec-2010
MF955352	FluA_H3N2_HA	A/Hong Kong/CUHK69107/2007(H3N2)	Jun-2007
MF955353	FluA_H3N2_HA	A/Hong Kong/CUHK60906/2008(H3N2)	Jan-2008
MF955354	FluA_H3N2_HA	A/Hong Kong/CUHK77209/2008(H3N2)	Aug-2008
MF955355	FluA_H3N2_HA	A/Hong Kong/CUHK65249/2007(H3N2)	Mar-2007
MF955356	FluA_H3N2_HA	A/Hong Kong/CUHK68205/2007(H3N2)	May-2007
MF955357	FluA_H3N2_HA	A/Hong Kong/CUHK41034/2010(H3N2)	Sep-2010
MF955358	FluA_H3N2_HA	A/Hong Kong/CUHK42370/2010(H3N2)	Oct-2010
MF955359	FluA_H3N2_HA	A/Hong Kong/CUHK42691/2010(H3N2)	Oct-2010
MF955360	FluA_H3N2_HA	A/Hong Kong/CUHK66835/2009(H3N2)	Jan-2009
MF955361	FluA_H3N2_HA	A/Hong Kong/CUHK37893/2010(H3N2)	Jul-2010
MF955362	FluA_H3N2_HA	A/Hong Kong/CUHK39965/2010(H3N2)	Aug-2010
MF955363	FluA_H3N2_HA	A/Hong Kong/CUHK32581/2012(H3N2)	Apr-2012



GenBank accession no.	Type	Isolate ID	Collection date
MF955364	FluA_H3N2_HA	A/Hong Kong/CUHK10821/1996(H3N2)	Apr-1996
MF955365	FluA_H3N2_HA	A/Hong Kong/CUHK30085/2012(H3N2)	Mar-2012
MF955366	FluA_H3N2_HA	A/Hong Kong/CUHK33255/2012(H3N2)	Apr-2012
MF955367	FluA_H3N2_HA	A/Hong Kong/CUHK34445/2012(H3N2)	May-2012
MF955368	FluA_H3N2_HA	A/Hong Kong/CUHK71868/2009(H3N2)	Apr-2009
MF955369	FluA_H3N2_HA	A/Hong Kong/CUHK38864/2010(H3N2)	Aug-2010
MF955370	FluA_H3N2_HA	A/Hong Kong/CUHK40637/2010(H3N2)	Sep-2010
MF955371	FluA_H3N2_HA	A/Hong Kong/CUHK15321/1996(H3N2)	May-1996
MF955372	FluA_H3N2_HA	A/Hong Kong/CUHK15361/1996(H3N2)	May-1996
MF955373	FluA_H3N2_HA	A/Hong Kong/CUHK18255/1996(H3N2)	Jun-1996
MF955374	FluA_H3N2_HA	A/Hong Kong/CUHK43137/2012(H3N2)	Sep-2012
MF955375	FluA_H3N2_HA	A/Hong Kong/CUHK10905/1996(H3N2)	Apr-1996
MF955376	FluA_H3N2_HA	A/Hong Kong/CUHK10930/1996(H3N2)	Apr-1996
MF955377	FluA_H3N2_HA	A/Hong Kong/CUHK70905/2009(H3N2)	Apr-2009
MF955378	FluA_H3N2_HA	A/Hong Kong/CUHK70481/2007(H3N2)	Jun-2007
MF955379	FluA_H3N2_HA	A/Hong Kong/CUHK70672/2007(H3N2)	Jun-2007
MF955380	FluA_H3N2_HA	A/Hong Kong/CUHK71333/2007(H3N2)	Jul-2007
MF955381	FluA_H3N2_HA	A/Hong Kong/CUHK67465/2007(H3N2)	May-2007
MF955382	FluA_H3N2_HA	A/Hong Kong/CUHK70137/2007(H3N2)	Jun-2007
MF955383	FluA_H3N2_HA	A/Hong Kong/CUHK66547/2009(H3N2)	Jan-2009
MF955384	FluA_H3N2_HA	A/Hong Kong/CUHK68649/2009(H3N2)	Feb-2009
MF955385	FluA_H3N2_HA	A/Hong Kong/CUHK70803/2009(H3N2)	Apr-2009
MF955386	FluA_H3N2_HA	A/Hong Kong/CUHK64533/2008(H3N2)	Mar-2008
MF955387	FluA_H3N2_HA	A/Hong Kong/CUHK73085/2008(H3N2)	Jul-2008
MF955388	FluA_H3N2_HA	A/Hong Kong/CUHK82526/2008(H3N2)	Dec-2008
MF955389	FluA_H3N2_HA	A/Hong Kong/CUHK13623/2011(H3N2)	Jan-2011
MF955390	FluA_H3N2_HA	A/Hong Kong/CUHK10992/1996(H3N2)	Apr-1996
MF955391	FluA_H3N2_HA	A/Hong Kong/CUHK15208/1996(H3N2)	Apr-1996
MF955392	FluA_H3N2_HA	A/Hong Kong/CUHK26553/1996(H3N2)	Aug-1996
MF955393	FluA_H3N2_HA	A/Hong Kong/CUHK10715/1996(H3N2)	Mar-1996
MF955394	FluA_H3N2_HA	A/Hong Kong/CUHK10922/1996(H3N2)	Apr-1996
MF955395	FluA_H3N2_HA	A/Hong Kong/CUHK10970/1996(H3N2)	Apr-1996
MF955396	FluA_H3N2_HA	A/Hong Kong/CUHK64597/2007(H3N2)	Mar-2007
MF955397	FluA_H3N2_HA	A/Hong Kong/CUHK71129/2007(H3N2)	Jun-2007
MF955398	FluA_H3N2_HA	A/Hong Kong/CUHK72743/2007(H3N2)	Jul-2007
MF955399	FluA_H3N2_HA	A/Hong Kong/CUHK62440/2007(H3N2)	Feb-2007
MF955400	FluA_H3N2_HA	A/Hong Kong/CUHK62789/2007(H3N2)	Feb-2007
MF955401	FluA_H3N2_HA	A/Hong Kong/CUHK63295/2007(H3N2)	Feb-2007
MF955402	FluA_H3N2_HA	A/Hong Kong/CUHK73649/2009(H3N2)	Jun-2009
MF955403	FluA_H3N2_HA	A/Hong Kong/CUHK40492/2010(H3N2)	Sep-2010
MF955404	FluA_H3N2_HA	A/Hong Kong/CUHK43136/2010(H3N2)	Oct-2010
MF955405	FluA_H3N2_HA	A/Hong Kong/CUHK72991/2008(H3N2)	Jul-2008
MF955406	FluA_H3N2_HA	A/Hong Kong/CUHK68236/2009(H3N2)	Feb-2009
MF955407	FluA_H3N2_HA	A/Hong Kong/CUHK73480/2009(H3N2)	Jun-2009
MF955408	FluA_H3N2_HA	A/Hong Kong/CUHK61864/2007(H3N2)	Feb-2007
MF955409	FluB_HA	B/Hong Kong/CUHK954/1997	Feb-1997
MF955410	FluB_HA	B/Hong Kong/CUHK5911/2002	Jan-2002
MF955411	FluB_HA	B/Hong Kong/CUHK65229/2007	Mar-2007
MF955412	FluB_HA	B/Hong Kong/CUHK47908/2012	Nov-2012
MF955413	FluB_HA	B/Hong Kong/CUHK33652/2011	Dec-2011
MF955414	FluB_HA	B/Hong Kong/CUHK15535/1998	Jun-1998
MF955415	FluB_HA	B/Hong Kong/CUHK64639/2008	Mar-2008
MF955416	FluB_HA	B/Hong Kong/CUHK10649/1996	Mar-1996
MF955417	FluB_HA	B/Hong Kong/CUHK27358/2010	Feb-2010
MF955418	FluB_HA	B/Hong Kong/CUHK50687/2004	Jul-2004
MF955419	FluB_HA	B/Hong Kong/CUHK74303/2007	Aug-2007
MF955420	FluB_HA	B/Hong Kong/CUHK13967 /1999	May-1999
MF955421	FluB_HA	B/Hong Kong/CUHK33668/2012	Apr-2012
MF955422	FluB_HA	B/Hong Kong/CUHK33761/2012	Apr-2012
MF955423	FluB_HA	B/Hong Kong/CUHK21897/1996	Jun-1996
MF955424	FluB_HA	B/Hong Kong/CUHK15517 /1998	Jun-1998
MF955425	FluB_HA	B/Hong Kong/CUHK50325/2002	Oct-2002
MF955426	FluB_HA	B/Hong Kong/CUHK11835/1999	Mar-1999
MF955427	FluB_HA	B/Hong Kong/CUHK39404/2010	Aug-2010
MF955428	FluB_HA	B/Hong Kong/CUHK46712/2010	Dec-2010
MF955429	FluB_HA	B/Hong Kong/CUHK45711/2000	Nov-2000
MF955430	FluB_HA	B/Hong Kong/CUHK65888/2008	Apr-2008
MF955431	FluB_HA	B/Hong Kong/CUHK16551/1998	Jul-1998
MF955432	FluB_HA	B/Hong Kong/CUHK62733/2008	Feb-2008

GenBank accession no.	Type	Isolate ID	Collection date
MF955433	FluB_HA	B/Hong Kong/CUHK11995/1999	Mar-1999
MF955434	FluB_HA	B/Hong Kong/CUHK63933/2007	Mar-2007
MF955435	FluB_HA	B/Hong Kong/CUHK29315/2012	Mar-2012
MF955436	FluB_HA	B/Hong Kong/CUHK46202/2010	Dec-2010
MF955437	FluB_HA	B/Hong Kong/CUHK16087/1998	Jun-1998
MF955438	FluB_HA	B/Hong Kong/CUHK16854/1998	Jul-1998
MF955439	FluB_HA	B/Hong Kong/CUHK15855/1998	Jun-1998
MF955440	FluB_HA	B/Hong Kong/CUHK45550/2000	Nov-2000
MF955441	FluB_HA	B/Hong Kong/CUHK052533/2000	Dec-2000
MF955442	FluB_HA	B/Hong Kong/CUHK6030/2001	Feb-2001
MF955443	FluB_HA	B/Hong Kong/CUHK30662/2011	Nov-2011
MF955444	FluB_HA	B/Hong Kong/CUHK51180/2002	Oct-2002
MF955445	FluB_HA	B/Hong Kong/CUHK18357/1996	Jun-1996
MF955446	FluB_HA	B/Hong Kong/CUHK460/1997	Jan-1997
MF955447	FluB_HA	B/Hong Kong/CUHK17239/1998	Jul-1998
MF955448	FluB_HA	B/Hong Kong/CUHK16953/1998	Jul-1998
MF955449	FluB_HA	B/Hong Kong/CUHK11868/1999	Mar-1999
MF955450	FluB_HA	B/Hong Kong/CUHK5724/2003	Jan-2003
MF955451	FluB_HA	B/Hong Kong/CUHK51404/2004	Jul-2004
MF955452	FluB_HA	B/Hong Kong/CUHK9350/2005	Mar-2005
MF955453	FluB_HA	B/Hong Kong/CUHK42989 /2007	Sep-2007
MF955454	FluB_HA	B/Hong Kong/CUHK24560/2000	May-2000
MF955455	FluB_HA	B/Hong Kong/CUHK22392/2000	Mar-2000
MF955456	FluB_HA	B/Hong Kong/CUHK52005/2000	Dec-2000
MF955457	FluB_HA	B/Hong Kong/CUHK12003 /1999	Mar-1999
MF955458	FluB_HA	B/Hong Kong/CUHK14124/1999	May-1999
MF955459	FluB_HA	B/Hong Kong/CUHK23174/2000	Mar-2000
MF955460	FluB_HA	B/Hong Kong/CUHK22465/2001	May-2001
MF955461	FluB_HA	B/Hong Kong/CUHK51178/2002	Oct-2002
MF955462	FluB_HA	B/Hong Kong/CUHK22741/2001	May-2001
MF955463	FluB_HA	B/Hong Kong/CUHK23356/2000	Apr-2000
MF955464	FluB_HA	B/Hong Kong/CUHK6611/2003	Feb-2003
MF955465	FluB_HA	B/Hong Kong/CUHK21447/2003	Mar-2003
MF955466	FluB_HA	B/Hong Kong/CUHK52370/2004	Aug-2004
MF955467	FluB_HA	B/Hong Kong/CUHK13481/2003	Mar-2003
MF955468	FluB_HA	B/Hong Kong/CUHK16575/1998	Jul-1998
MF955469	FluB_HA	B/Hong Kong/CUHK17605/1998	Aug-1998
MF955470	FluB_HA	B/Hong Kong/CUHK26127/1996	Jul-1996
MF955471	FluB_HA	B/Hong Kong/CUHK4120/1997	Mar-1997
MF955472	FluB_HA	B/Hong Kong/CUHK29309 /2000	Oct-2000
MF955473	FluB_HA	B/Hong Kong/CUHK14186/1999	May-1999
MF955474	FluB_HA	B/Hong Kong/CUHK22706/2000	Feb-2000
MF955475	FluB_HA	B/Hong Kong/CUHK23143/2011	Jun-2011
MF955476	FluB_HA	B/Hong Kong/CUHK31852/2011	Nov-2011
MF955477	FluB_HA	B/Hong Kong/CUHK14156/2011	Jan-2011
MF955478	FluB_HA	B/Hong Kong/CUHK43211/2010	Oct-2010
MF955479	FluB_HA	B/Hong Kong/CUHK4348/1997	Mar-1997
MF955480	FluB_HA	B/Hong Kong/CUHK16076/1998	Jun-1998
MF955481	FluB_HA	B/Hong Kong/CUHK10823/1996	Apr-1996
MF955482	FluB_HA	B/Hong Kong/CUHK10549/1996	Mar-1996
MF955483	FluB_HA	B/Hong Kong/CUHK18268/1996	Jun-1996
MF955484	FluB_HA	B/Hong Kong/CUHK33955/2010	May-2010
MF955485	FluB_HA	B/Hong Kong/CUHK12338/2005	May-2005
MF955486	FluB_HA	B/Hong Kong/CUHK26813/2010	Jan-2010
MF955487	FluB_HA	B/Hong Kong/CUHK66047/2008	Apr-2008
MF955488	FluB_HA	B/Hong Kong/CUHK63322/2008	Feb-2008
MF955489	FluB_HA	B/Hong Kong/CUHK64419/2008	Mar-2008
MF955490	FluB_HA	B/Hong Kong/CUHK32498 /2012	Apr-2012
MF955491	FluB_HA	B/Hong Kong/CUHK33099/2012	Apr-2012
MF955492	FluB_HA	B/Hong Kong/CUHK30032/2012	Mar-2012
MF955493	FluB_HA	B/Hong Kong/CUHK23377/2011	Jun-2011
MF955494	FluB_HA	B/Hong Kong/CUHK29189/2012	Feb-2012
MF955495	FluB_HA	B/Hong Kong/CUHK33106/2012	Apr-2012
MF955496	FluB_HA	B/Hong Kong/CUHK5806/2001	Jan-2001
MF955497	FluB_HA	B/Hong Kong/CUHK11672/1999	Feb-1999
MF955498	FluB_HA	B/Hong Kong/CUHK10656 /1996	Mar-1996
MF955499	FluB_HA	B/Hong Kong/CUHK16364/1998	Jul-1998
MF955500	FluB_HA	B/Hong Kong/CUHK21441/2011	May-2011
MF955501	FluB_HA	B/Hong Kong/CUHK63615/2008	Mar-2008

GenBank accession no.	Type	Isolate ID	Collection date
MF955502	FluB_HA	B/Hong Kong/CUHK42491 /2007	Sep-2007
MF955503	FluB_HA	B/Hong Kong/CUHK46173/2007	Nov-2007
MF955504	FluB_HA	B/Hong Kong/CUHK66994/2007	Apr-2007
MF955505	FluB_HA	B/Hong Kong/CUHK64081/2008	Mar-2008
MF955506	FluB_HA	B/Hong Kong/CUHK18490/2011	Mar-2011
MF955507	FluB_HA	B/Hong Kong/CUHK18864/2011	Mar-2011
MF955508	FluB_HA	B/Hong Kong/CUHK18038/2011	Mar-2011
MF955509	FluB_HA	B/Hong Kong/CUHK62171/2008	Feb-2008
MF955510	FluB_HA	B/Hong Kong/CUHK42224/2010	Sep-2010
MF955511	FluB_HA	B/Hong Kong/CUHK39840/2010	Aug-2010
MF955512	FluB_HA	B/Hong Kong/CUHK39777/2012	Jul-2012
MF955513	FluB_HA	B/Hong Kong/CUHK32603/2012	Apr-2012
MF955514	FluB_HA	B/Hong Kong/CUHK27780/2011	Sep-2011
MF955515	FluB_HA	B/Hong Kong/CUHK22445/2011	May-2011
MF955516	FluB_HA	B/Hong Kong/CUHK24205/2011	Jul-2011
MF955517	FluB_HA	B/Hong Kong/CUHK51509/2002	Nov-2002
MF955518	FluB_HA	B/Hong Kong/CUHK6570/2003	Feb-2003
MF955519	FluB_HA	B/Hong Kong/CUHK35565/2002	Sep-2002
MF955520	FluB_HA	B/Hong Kong/CUHK13802/2001	Mar-2001
MF955521	FluB_HA	B/Hong Kong/CUHK653/1997	Feb-1997
MF955522	FluB_HA	B/Hong Kong/CUHK4029/1997	Mar-1997
MF955523	FluB_HA	B/Hong Kong/CUHK21776/1996	Jun-1996
MF955524	FluB_HA	B/Hong Kong/CUHK26643 /2012	Jan-2012
MF955525	FluB_HA	B/Hong Kong/CUHK10966/1996	Apr-1996
MF955526	FluB_HA	B/Hong Kong/CUHK4372/1997	Mar-1997
MF955527	FluB_HA	B/Hong Kong/CUHK11944/1999	Mar-1999
MF955528	FluB_HA	B/Hong Kong/CUHK11877 /1999	Mar-1999
MF955529	FluB_HA	B/Hong Kong/CUHK11930/1999	Mar-1999
MF955530	FluB_HA	B/Hong Kong/CUHK18313/1998	Sep-1998
MF955531	FluB_HA	B/Hong Kong/CUHK11073/1999	Feb-1999
MF955532	FluB_HA	B/Hong Kong/CUHK25187/2011	Jul-2011
MF955533	FluB_HA	B/Hong Kong/CUHK66139/2007	Apr-2007
MF955534	FluB_HA	B/Hong Kong/CUHK71746/2007	Jul-2007
MF955535	FluB_HA	B/Hong Kong/CUHK68911/2008	May-2008
MF955536	FluB_HA	B/Hong Kong/CUHK32249/2011	Dec-2011
MF955537	FluB_HA	B/Hong Kong/CUHK18142/2011	Mar-2011
MF955538	FluB_HA	B/Hong Kong/CUHK63456/2008	Mar-2008
MF955539	FluB_HA	B/Hong Kong/CUHK37722/2010	Jul-2010
MF955540	FluB_HA	B/Hong Kong/CUHK43052/2005	Jul-2005
MF955541	FluB_HA	B/Hong Kong/CUHK52158/2004	Aug-2004
MF955542	FluB_HA	B/Hong Kong/CUHK51212 /2004	Jul-2004
MF955543	FluB_HA	B/Hong Kong/CUHK53074/2006	Mar-2006
MF955544	FluB_HA	B/Hong Kong/CUHK52093/2004	Aug-2004
MF955545	FluB_HA	B/Hong Kong/CUHK21967/2000	Feb-2000
MF955546	FluB_HA	B/Hong Kong/CUHK30004/1999	Jun-1999
MF955547	FluB_HA	B/Hong Kong/CUHK20636/2000	Jan-2000
MF955548	FluB_HA	B/Hong Kong/CUHK13275/2002	Mar-2002
MF955549	FluB_HA	B/Hong Kong/CUHK10669/1996	Mar-1996
MF955550	FluB_HA	B/Hong Kong/CUHK4187/1997	Mar-1997
MF955551	FluB_HA	B/Hong Kong/CUHK4259/1997	Mar-1997
MF955552	FluB_HA	B/Hong Kong/CUHK4022/1997	Mar-1997
MF955553	FluB_HA	B/Hong Kong/CUHK740/1997	Feb-1997
MF955554	FluB_HA	B/Hong Kong/CUHK4008/1997	Mar-1997
MF955555	FluB_HA	B/Hong Kong/CUHK18502/1998	Sep-1998
MF955556	FluB_HA	B/Hong Kong/CUHK14952 /1999	Jun-1999
MF955557	FluB_HA	B/Hong Kong/CUHK30046 /1999	Jun-1999
MF955558	FluB_HA	B/Hong Kong/CUHK10906/1999	Feb-1999
MF955559	FluB_HA	B/Hong Kong/CUHK11988 /1999	Mar-1999
MF955560	FluB_HA	B/Hong Kong/CUHK10724/1996	Mar-1996
MF955561	FluB_HA	B/Hong Kong/CUHK40333/2010	Sep-2010
MF955562	FluB_HA	B/Hong Kong/CUHK13314 /2011	Jan-2011
MF955563	FluB_HA	B/Hong Kong/CUHK44277/2010	Nov-2010
MF955564	FluB_HA	B/Hong Kong/CUHK16218/2011	Feb-2011
MF955565	FluB_HA	B/Hong Kong/CUHK27583/2012	Feb-2012
MF955566	FluB_HA	B/Hong Kong/CUHK10701/1996	Mar-1996
MF955567	FluB_HA	B/Hong Kong/CUHK26627/2012	Jan-2012
MF955568	FluB_HA	B/Hong Kong/CUHK22381/2011	May-2011
MF955569	FluB_HA	B/Hong Kong/CUHK24779 /2011	Jul-2011
MF955570	FluB_HA	B/Hong Kong/CUHK22332/2003	Mar-2003

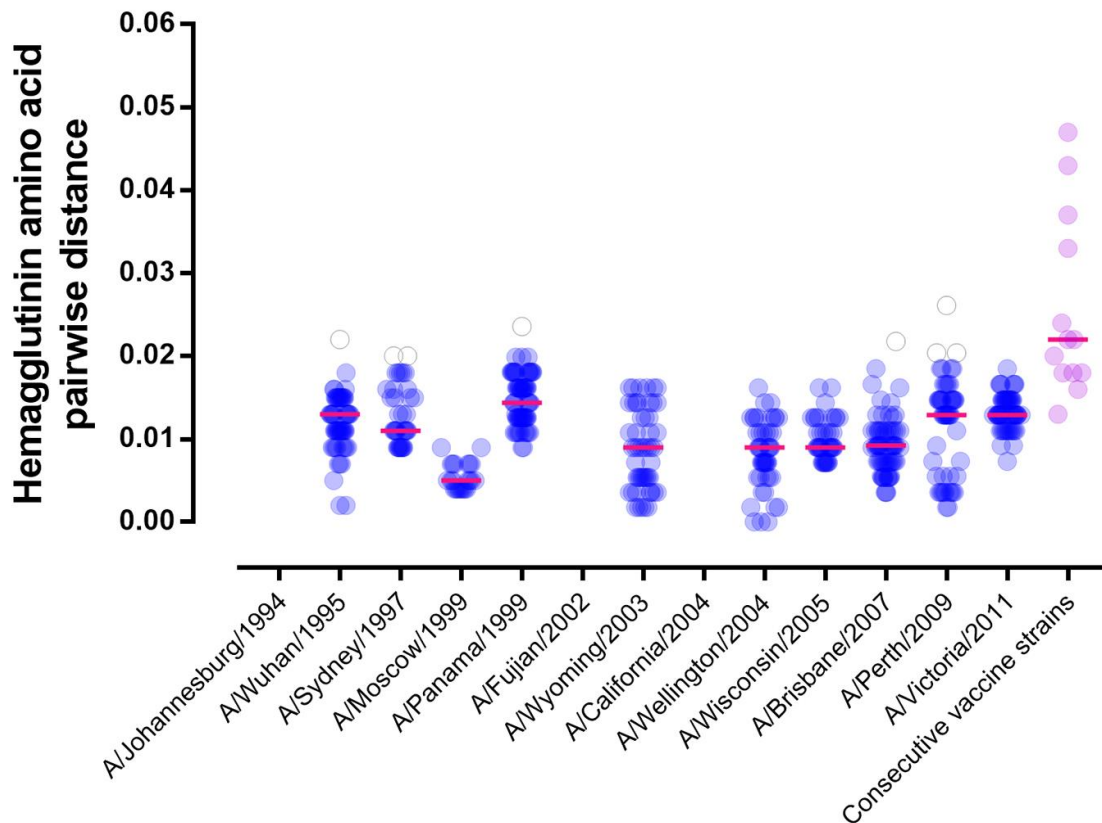
GenBank accession no.	Type	Isolate ID	Collection date
MF955571	FluB_HA	B/Hong Kong/CUHK51098/2004	Jul-2004
MF955572	FluB_HA	B/Hong Kong/CUHK57325/2006	May-2006
MF955573	FluB_HA	B/Hong Kong/CUHK22674/2001	May-2001
MF955574	FluB_HA	B/Hong Kong/CUHK5815/2001	Jan-2001
MF955575	FluB_HA	B/Hong Kong/CUHK22878/2002	May-2002
MF955576	FluB_HA	B/Hong Kong/CUHK6649/2002	Feb-2002
MF955577	FluB_HA	B/Hong Kong/CUHK5696/2001	Jan-2001
MF955578	FluB_HA	B/Hong Kong/CUHK6335/2002	Feb-2002
MF955579	FluB_HA	B/Hong Kong/CUHK23689/2000	Apr-2000
MF955580	FluB_HA	B/Hong Kong/CUHK27366/2000	Aug-2000
MF955581	FluB_HA	B/Hong Kong/CUHK11665/1999	Feb-1999
MF955582	FluB_HA	B/Hong Kong/CUHK14563/1999	Jun-1999
MF955583	FluB_HA	B/Hong Kong/CUHK13246/2002	Mar-2002
MF955584	FluB_HA	B/Hong Kong/CUHK23440/2002	May-2002
MF955585	FluB_HA	B/Hong Kong/CUHK21724/2002	Apr-2002
MF955586	FluB_HA	B/Hong Kong/CUHK22825/2001	May-2001
MF955587	FluB_HA	B/Hong Kong/CUHK6935/2002	Feb-2002
MF955588	FluB_HA	B/Hong Kong/CUHK18145/1998	Sep-1998
MF955589	FluB_HA	B/Hong Kong/CUHK10522/1996	Mar-1996
MF955590	FluB_HA	B/Hong Kong/CUHK10806/1996	Apr-1996
MF955591	FluB_HA	B/Hong Kong/CUHK3469/1996	Mar-1996
MF955592	FluB_HA	B/Hong Kong/CUHK2829/1996	Jan-1996
MF955593	FluB_HA	B/Hong Kong/CUHK3445/1996	Mar-1996
MF955594	FluB_HA	B/Hong Kong/CUHK721/1997	Feb-1997
MF955595	FluB_HA	B/Hong Kong/CUHK18654/1998	Sep-1998
MF955596	FluB_HA	B/Hong Kong/CUHK15890/1998	Jun-1998
MF955597	FluB_HA	B/Hong Kong/CUHK17459/1998	Aug-1998
MF955598	FluB_HA	B/Hong Kong/CUHK4261/1997	Mar-1997
MF955599	FluB_HA	B/Hong Kong/CUHK4304/1997	Mar-1997
MF955600	FluB_HA	B/Hong Kong/CUHK52533/2004	Aug-2004
MF955601	FluB_HA	B/Hong Kong/CUHK52708/2004	Aug-2004
MF955602	FluB_HA	B/Hong Kong/CUHK52437/2004	Aug-2004
MF955603	FluB_HA	B/Hong Kong/CUHK52248 /2006	Feb-2006
MF955604	FluB_HA	B/Hong Kong/CUHK68586/2007	May-2007
MF955605	FluB_HA	B/Hong Kong/CUHK67604/2007	May-2007
MF955606	FluB_HA	B/Hong Kong/CUHK50698 /2006	Jan-2006
MF955607	FluB_HA	B/Hong Kong/CUHK52419/2004	Aug-2004
MF955608	FluB_HA	B/Hong Kong/CUHK34606/2002	Aug-2002
MF955609	FluB_HA	B/Hong Kong/CUHK24152/2002	Jun-2002
MF955610	FluB_HA	B/Hong Kong/CUHK6521/2003	Feb-2003
MF955611	FluB_HA	B/Hong Kong/CUHK13268/2003	Feb-2003
MF955612	FluB_HA	B/Hong Kong/CUHK5672/2003	Jan-2003
MF955613	FluB_HA	B/Hong Kong/CUHK6681/2003	Feb-2003
MF955614	FluB_HA	B/Hong Kong/CUHK22432/2002	Apr-2002
MF955615	FluB_HA	B/Hong Kong/CUHK52912/2000	Dec-2000
MF955616	FluB_HA	B/Hong Kong/CUHK8835/2005	Mar-2005
MF955617	FluB_HA	B/Hong Kong/CUHK52684/2004	Aug-2004
MF955618	FluB_HA	B/Hong Kong/CUHK52196 /2004	Aug-2004
MF955619	FluB_HA	B/Hong Kong/CUHK23890 /2000	Apr-2000
MF955620	FluB_HA	B/Hong Kong/CUHK16057/1998	Jun-1998
MF955621	FluB_HA	B/Hong Kong/CUHK16801/1998	Jul-1998
MF955622	FluB_HA	B/Hong Kong/CUHK4232/1997	Mar-1997
MF955623	FluB_HA	B/Hong Kong/CUHK532/1997	Jan-1997
MF955624	FluB_HA	B/Hong Kong/CUHK939/1997	Feb-1997
MF955625	FluB_HA	B/Hong Kong/CUHK17447/1998	Aug-1998
MF955626	FluB_HA	B/Hong Kong/CUHK52212/2000	Dec-2000
MF955627	FluB_HA	B/Hong Kong/CUHK20580/2000	Jan-2000
MF955628	FluB_HA	B/Hong Kong/CUHK14181 /1999	May-1999
MF955629	FluB_HA	B/Hong Kong/CUHK18025 /1998	Aug-1998
MF955630	FluB_HA	B/Hong Kong/CUHK14449/1999	Jun-1999
MF955631	FluB_HA	B/Hong Kong/CUHK29311/2011	Oct-2011
MF955632	FluB_HA	B/Hong Kong/CUHK33217/2011	Dec-2011
MF955633	FluB_HA	B/Hong Kong/CUHK28674/2011	Sep-2011
MF955634	FluB_HA	B/Hong Kong/CUHK16069/2011	Feb-2011
MF955635	FluB_HA	B/Hong Kong/CUHK25561/2011	Jul-2011
MF955636	FluB_HA	B/Hong Kong/CUHK30018/2012	Mar-2012
MF955637	FluB_HA	B/Hong Kong/CUHK3472/1996	Mar-1996
MF955638	FluB_HA	B/Hong Kong/CUHK10610/1996	Mar-1996
MF955639	FluB_HA	B/Hong Kong/CUHK3331/1996	Mar-1996

GenBank accession no.	Type	Isolate ID	Collection date
MF955640	FluB_HA	B/Hong Kong/CUHK30694/2012	Mar-2012
MF955641	FluB_HA	B/Hong Kong/CUHK34334/2012	May-2012
MF955642	FluB_HA	B/Hong Kong/CUHK44360/2007	Oct-2007
MF955643	FluB_HA	B/Hong Kong/CUHK29953/2010	Mar-2010
MF955644	FluB_HA	B/Hong Kong/CUHK61550/2007	Jan-2007
MF955645	FluB_HA	B/Hong Kong/CUHK31105/2011	Nov-2011
MF955646	FluB_HA	B/Hong Kong/CUHK67267/2012	Jan-2012
MF955647	FluB_HA	B/Hong Kong/CUHK27078/2011	Aug-2011
MF955648	FluB_HA	B/Hong Kong/CUHK39059/2010	Aug-2010
MF955649	FluB_HA	B/Hong Kong/CUHK36243/2012	May-2012
MF955650	FluB_HA	B/Hong Kong/CUHK29160/1996	Aug-1996
MF955651	FluB_HA	B/Hong Kong/CUHK16792/1998	Jul-1998
MF955652	FluB_HA	B/Hong Kong/CUHK28577/1996	Aug-1996
MF955653	FluB_HA	B/Hong Kong/CUHK48264/2012	Dec-2012
MF955654	FluB_HA	B/Hong Kong/CUHK30062/2012	Mar-2012
MF955655	FluB_HA	B/Hong Kong/CUHK37079/2010	Jun-2010
MF955656	FluB_HA	B/Hong Kong/CUHK71157/2007	Jul-2007
MF955657	FluB_HA	B/Hong Kong/CUHK47768/2007	Dec-2007
MF955658	FluB_HA	B/Hong Kong/CUHK72892/2007	Jul-2007
MF955659	FluB_HA	B/Hong Kong/CUHK64525/2007	Mar-2007
MF955660	FluB_HA	B/Hong Kong/CUHK68325/2007	May-2007
MF955661	FluB_HA	B/Hong Kong/CUHK35400/2010	May-2010
MF955662	FluB_HA	B/Hong Kong/CUHK67554/2008	Apr-2008
MF955663	FluB_HA	B/Hong Kong/CUHK67100 /2008	Apr-2008
MF955664	FluB_HA	B/Hong Kong/CUHK69311/2007	Jun-2007
MF955665	FluB_HA	B/Hong Kong/CUHK57526/2006	May-2006
MF955666	FluB_HA	B/Hong Kong/CUHK8074/2005	Mar-2005
MF955667	FluB_HA	B/Hong Kong/CUHK30407/2011	Oct-2011
MF955668	FluB_HA	B/Hong Kong/CUHK26732/2012	Jan-2012
MF955669	FluB_HA	B/Hong Kong/CUHK29792/2011	Oct-2011
MF955670	FluB_HA	B/Hong Kong/CUHK15388/2011	Feb-2011
MF955671	FluB_HA	B/Hong Kong/CUHK18618/1998	Sep-1998
MF955672	FluB_HA	B/Hong Kong/CUHK11469 /1999	Feb-1999
MF955673	FluB_HA	B/Hong Kong/CUHK51669/2004	Jul-2004
MF955674	FluB_HA	B/Hong Kong/CUHK11794 /1999	Mar-1999
MF955675	FluB_HA	B/Hong Kong/CUHK22891/2002	May-2002
MF955676	FluB_HA	B/Hong Kong/CUHK34393/2002	Aug-2002
JX429604	FluB_HA	B/Hong Kong/CUHK22975/2001	May-2001
JX429608	FluB_HA	B/Hong Kong/CUHK34987/2002	Aug-2002
JX429609	FluB_HA	B/Hong Kong/CUHK35884/2002	Sep-2002
JX429614	FluB_HA	B/Hong Kong/CUHK5597/2003	Jan-2003
JX429615	FluB_HA	B/Hong Kong/CUHK5879/2003	Jan-2003
JX429617	FluB_HA	B/Hong Kong/CUHK6081/2003	Jan-2003
JX429618	FluB_HA	B/Hong Kong/CUHK6088/2003	Jan-2003
JX429619	FluB_HA	B/Hong Kong/CUHK6212/2003	Feb-2003
JX429620	FluB_HA	B/Hong Kong/CUHK6320/2003	Feb-2003
JX429621	FluB_HA	B/Hong Kong/CUHK6327/2003	Feb-2003
JX429622	FluB_HA	B/Hong Kong/CUHK6328/2003	Feb-2003
JX429623	FluB_HA	B/Hong Kong/CUHK6343/2003	Feb-2003
JX429624	FluB_HA	B/Hong Kong/CUHK6550/2003	Feb-2003
JX429625	FluB_HA	B/Hong Kong/CUHK22269/2003	Mar-2003
JX429626	FluB_HA	B/Hong Kong/CUHK58582/2004	Dec-2004
JX429627	FluB_HA	B/Hong Kong/CUHK5196/2005	Jan-2005
JX429628	FluB_HA	B/Hong Kong/CUHK6241/2005	Jan-2005
JX429629	FluB_HA	B/Hong Kong/CUHK6331/2005	Jan-2005
JX429630	FluB_HA	B/Hong Kong/CUHK12098/2005	May-2005
JX429631	FluB_HA	B/Hong Kong/CUHK44257/2005	Aug-2005
JX429632	FluB_HA	B/Hong Kong/CUHK46869/2005	Sep-2005
JX429633	FluB_HA	B/Hong Kong/CUHK49537/2005	Nov-2005
JX429634	FluB_HA	B/Hong Kong/CUHK50098 /2006	Jan-2006
JX429635	FluB_HA	B/Hong Kong/CUHK50543/2006	Jan-2006
JX429637	FluB_HA	B/Hong Kong/CUHK51122/2006	Jan-2006
JX429638	FluB_HA	B/Hong Kong/CUHK51422/2006	Feb-2006
JX429639	FluB_HA	B/Hong Kong/CUHK55362/2006	Apr-2006
JX429640	FluB_HA	B/Hong Kong/CUHK55544/2006	Apr-2006
JX429641	FluB_HA	B/Hong Kong/CUHK56028 /2006	Apr-2006
JX429642	FluB_HA	B/Hong Kong/CUHK56533/2006	May-2006
JX429643	FluB_HA	B/Hong Kong/CUHK56837/2006	May-2006
JX429644	FluB_HA	B/Hong Kong/CUHK57008/2006	May-2006

GenBank accession no.	Type	Isolate ID	Collection date
JX429645	FluB_HA	B/Hong Kong/CUHK63364/2006	Aug-2006
JX429646	FluB_HA	B/Hong Kong/CUHK65660/2006	Oct-2006
JX429647	FluB_HA	B/Hong Kong/CUHK66461 /2006	Oct-2006
JX429648	FluB_HA	B/Hong Kong/CUHK48904 /2007	Dec-2007
JX429649	FluB_HA	B/Hong Kong/CUHK60082/2008	Jan-2008
JX429650	FluB_HA	B/Hong Kong/CUHK63116/2005	Dec-2005
JX429651	FluB_HA	B/Hong Kong/CUHK64327 /2007	Mar-2007
JX429653	FluB_HA	B/Hong Kong/CUHK67032/2008	Apr-2008
JX429654	FluB_HA	B/Hong Kong/CUHK25867/2010	Jan-2010
JX429656	FluB_HA	B/Hong Kong/CUHK28755/2010	Feb-2010
JX429660	FluB_HA	B/Hong Kong/CUHK30950/2010	Mar-2010
JX429666	FluB_HA	B/Hong Kong/CUHK6400/2003	Feb-2003
JX429667	FluB_HA	B/Hong Kong/CUHK45094/2005	Aug-2005
JX429668	FluB_HA	B/Hong Kong/CUHK26861/2010	Jan-2010
JX429673	FluB_HA	B/Hong Kong/CUHK23362/2000	Apr-2000
JX429674	FluB_HA	B/Hong Kong/CUHK24511/2000	May-2000
JX429676	FluB_HA	B/Hong Kong/CUHK26708/2000	Jul-2000
JX429677	FluB_HA	B/Hong Kong/CUHK28151/2000	Sep-2000
JX429679	FluB_HA	B/Hong Kong/CUHK45490/2000	Nov-2000
JX429682	FluB_HA	B/Hong Kong/CUHK45810 /2000	Nov-2000
JX429683	FluB_HA	B/Hong Kong/CUHK52855/2000	Dec-2000
JX429684	FluB_HA	B/Hong Kong/CUHK5140/2001	Jan-2001
JX429685	FluB_HA	B/Hong Kong/CUHK5678/2001	Jan-2001
JX429686	FluB_HA	B/Hong Kong/CUHK5792/2001	Jan-2001
JX429687	FluB_HA	B/Hong Kong/CUHK5813/2001	Jan-2001
JX429689	FluB_HA	B/Hong Kong/CUHK5949/2001	Jan-2001
JX429690	FluB_HA	B/Hong Kong/CUHK13723/2001	Mar-2001
JX429691	FluB_HA	B/Hong Kong/CUHK13803/2001	Mar-2001
JX429692	FluB_HA	B/Hong Kong/CUHK22328/2001	May-2001
JX429693	FluB_HA	B/Hong Kong/CUHK22361/2001	May-2001
JX429694	FluB_HA	B/Hong Kong/CUHK22394/2001	May-2001
JX429697	FluB_HA	B/Hong Kong/CUHK22731/2001	May-2001
JX429698	FluB_HA	B/Hong Kong/CUHK22941/2001	May-2001
JX429699	FluB_HA	B/Hong Kong/CUHK22980/2001	May-2001
JX429702	FluB_HA	B/Hong Kong/CUHK34740/2002	Aug-2002
JX429703	FluB_HA	B/Hong Kong/CUHK35386/2002	Sep-2002
JX429706	FluB_HA	B/Hong Kong/CUHK50602/2002	Oct-2002
JX429709	FluB_HA	B/Hong Kong/CUHK52162/2002	Nov-2002
JX429710	FluB_HA	B/Hong Kong/CUHK5107/2003	Jan-2003
JX429712	FluB_HA	B/Hong Kong/CUHK21937/2003	Mar-2003
JX429713	FluB_HA	B/Hong Kong/CUHK51379/2003	Jul-2003
JX429714	FluB_HA	B/Hong Kong/CUHK71975/2003	Sep-2003
JX429715	FluB_HA	B/Hong Kong/CUHK73990/2003	Nov-2003
JX429716	FluB_HA	B/Hong Kong/CUHK33398/2004	Apr-2004
JX429717	FluB_HA	B/Hong Kong/CUHK33528/2004	May-2004
JX429721	FluB_HA	B/Hong Kong/CUHK50385/2004	Jul-2004
JX429722	FluB_HA	B/Hong Kong/CUHK50636/2004	Jul-2004
JX429724	FluB_HA	B/Hong Kong/CUHK51106/2004	Jul-2004
JX429725	FluB_HA	B/Hong Kong/CUHK51149 /2004	Jul-2004
JX429726	FluB_HA	B/Hong Kong/CUHK52216/2004	Aug-2004
JX429727	FluB_HA	B/Hong Kong/CUHK52640/2004	Aug-2004
JX429728	FluB_HA	B/Hong Kong/CUHK52705/2004	Aug-2004
JX429729	FluB_HA	B/Hong Kong/CUHK53722/2004	Sep-2004
JX429731	FluB_HA	B/Hong Kong/CUHK5891 /2005	Jan-2005
JX429732	FluB_HA	B/Hong Kong/CUHK6337/2005	Jan-2005
JX429733	FluB_HA	B/Hong Kong/CUHK6702/2005	Feb-2005
JX429734	FluB_HA	B/Hong Kong/CUHK7123/2005	Feb-2005
JX429735	FluB_HA	B/Hong Kong/CUHK7597/2005	Feb-2005
JX429737	FluB_HA	B/Hong Kong/CUHK8338/2005	Mar-2005
JX429738	FluB_HA	B/Hong Kong/CUHK8842/2005	Mar-2005
JX429739	FluB_HA	B/Hong Kong/CUHK11134/2005	Apr-2005
JX429740	FluB_HA	B/Hong Kong/CUHK43516/2007	Sep-2007
JX429741	FluB_HA	B/Hong Kong/CUHK44142/2007	Sep-2007
JX429742	FluB_HA	B/Hong Kong/CUHK44997/2007	Oct-2007
JX429743	FluB_HA	B/Hong Kong/CUHK47361/2005	Oct-2005
JX429745	FluB_HA	B/Hong Kong/CUHK66862/2006	Oct-2006
JX429746	FluB_HA	B/Hong Kong/CUHK40165/2005	Jun-2005
JX429748	FluB_HA	B/Hong Kong/CUHK67089/2007	Apr-2007
JX429749	FluB_HA	B/Hong Kong/CUHK63087/2007	Feb-2007

GenBank accession no.	Type	Isolate ID	Collection date
JX429751	FluB_HA	B/Hong Kong/CUHK68567/2007	May-2007
JX429752	FluB_HA	B/Hong Kong/CUHK74092/2007	Aug-2007
JX429753	FluB_HA	B/Hong Kong/CUHK74822/2007	Aug-2007
JX429754	FluB_HA	B/Hong Kong/CUHK61247/2008	Jan-2008
JX429756	FluB_HA	B/Hong Kong/CUHK63126/2008	Feb-2008
JX429757	FluB_HA	B/Hong Kong/CUHK63367/2008	Mar-2008
JX429758	FluB_HA	B/Hong Kong/CUHK63832 /2008	Mar-2008
JX429760	FluB_HA	B/Hong Kong/CUHK64054/2008	Mar-2008
JX429763	FluB_HA	B/Hong Kong/CUHK69306/2008	May-2008
JX429764	FluB_HA	B/Hong Kong/CUHK69850/2008	May-2008
JX429766	FluB_HA	B/Hong Kong/CUHK28267/2010	Feb-2010
JX429767	FluB_HA	B/Hong Kong/CUHK30805/2010	Mar-2010
JX429769	FluB_HA	B/Hong Kong/CUHK32800/2010	Apr-2010
JX429770	FluB_HA	B/Hong Kong/CUHK34437/2010	May-2010
JX429771	FluB_HA	B/Hong Kong/CUHK38197/2010	Jul-2010
JX429776	FluB_HA	B/Hong Kong/CUHK21905 /2000	Feb-2000
JX429778	FluB_HA	B/Hong Kong/CUHK21910/2000	Feb-2000
JX429779	FluB_HA	B/Hong Kong/CUHK6017/2001	Feb-2001
JX429780	FluB_HA	B/Hong Kong/CUHK13773/2001	Mar-2001
JX429781	FluB_HA	B/Hong Kong/CUHK13865/2001	Mar-2001
JX429782	FluB_HA	B/Hong Kong/CUHK70022/2003	Sep-2003
JX429785	FluB_HA	B/Hong Kong/CUHK50947 /2004	Jul-2004
JX429786	FluB_HA	B/Hong Kong/CUHK63150/2008	Feb-2008
JX429787	FluB_HA	B/Hong Kong/CUHK63194/2008	Feb-2008
JX429788	FluB_HA	B/Hong Kong/CUHK81112/2008	Dec-2008
JX429790	FluB_HA	B/Hong Kong/CUHK54261/2006	Mar-2006
JX429791	FluB_HA	B/Hong Kong/CUHK51357/2004	Jul-2004

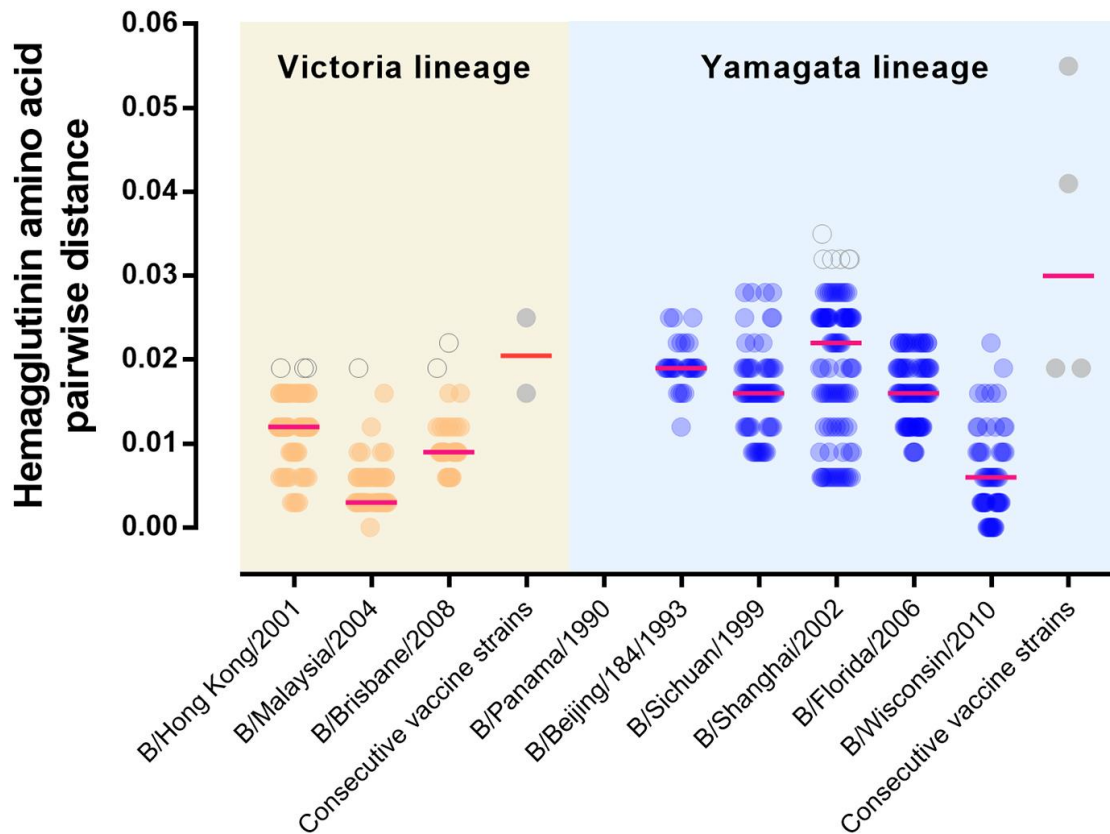
\*A total of 437 influenza A and 396 influenza B isolates were collected.



### Influenza H3N2 vaccine strains from 1995/96 to 2012/13

**Technical Appendix Figure 1.** Pairwise hemagglutinin amino acid distances between circulating and vaccine strains of influenza A(H3N2), Hong Kong, China, 1996–2012. The study analyzed 502 circulating A(H3N2) viruses. Calculation was performed using a Poisson correction model with rate variation among sites assumed in gamma distribution. Alignment positions containing gaps were masked. All analyses were performed in MEGA 6 (<https://www.megasoftware.net/>). Red horizontal lines denote median values. Outliers (distance >2 SD) are shown as empty circles. The mean distance between circulating viruses and vaccine strains ranged from 0.009 to 0.014, indicating close relationship. All vaccine strains were recommended by the World Health Organization for both Northern and Southern Hemispheres, except A/Wellington/2004, which was recommended for Southern Hemisphere vaccines only. The mean distance between consecutive vaccine strains was 0.02.





### Influenza B vaccine strains from 1995/96 to 2012/13

**Technical Appendix Figure 2.** Pairwise hemagglutinin amino acid distance between circulating and vaccine strains of influenza B, Hong Kong, China, 1996–2012. The study analyzed 481 circulating influenza B viruses. Calculation was performed using a Poisson correction model with rate variation among sites assumed in gamma distribution. Alignment positions containing gaps were masked. All analyses were performed in MEGA 6 (<https://www.megasoftware.net/>). Red horizontal lines denote median values. Outliers (distance >2 SD deviations) are shown as empty circles. The mean distance between circulating viruses and vaccine strains ranged from 0.003 to 0.012 and from 0.006 to 0.019 for the Victoria and Yamagata lineages, respectively. The mean distance between consecutive vaccine strains was 0.02 and 0.03 for Victoria and Yamagata lineages, respectively.