

Highly Pathogenic Avian Influenza A(H7N9) Virus, Tennessee, USA, March 2017

Dong-Hun Lee, Mia K. Torchetti, Mary Lea Killian, Yohannes Berhane, David E. Swayne

In March 2017, highly pathogenic avian influenza A(H7N9) was detected at 2 poultry farms in Tennessee, USA. Surveillance data and genetic analyses indicated multiple introductions of low pathogenicity avian influenza virus before mutation to high pathogenicity and interfarm transmission. Poultry surveillance should continue because low pathogenicity viruses circulate and spill over into commercial poultry.

In early March 2017, concurrent outbreaks of highly pathogenic avian influenza (HPAI) and low pathogenicity avian influenza (LPAI) A(H7N9) were occurring at poultry farms in Tennessee, USA. The first report of high loss due to death was received from a commercial broiler breeder facility in Lincoln County, Tennessee. The facility contained 74,000 chickens in 6 houses, but only 1 house was affected. Signs of disease included respiratory distress and increased death. Two days after disease onset, the number of dead birds increased from 50 to 500 within 24 hours, and oropharyngeal swab samples tested positive by real-time reverse transcription PCR (rRT-PCR) for the matrix and H7 genes at the C. E. Kord Animal Health Diagnostic Laboratory (Nashville, Tennessee). Samples were forwarded to the National Veterinary Services Laboratories of the US Department of Agriculture (Ames, Iowa, USA) for confirmation, and depopulation of the flock was initiated. The next day, the virus was confirmed as H7N9 HPAI virus by sequencing. A second HPAI-positive broiler breeder flock of 55,000 birds was identified in the control zone <10 days after identification of the first site; this site also had only 1 house affected. During the time between the 2 HPAI virus detections, H7N9 LPAI was confirmed in a different broiler breeder flock in Giles, a neighboring Tennessee county (online Technical Appendix Figure 1, <https://wwwnc.cdc.gov/EID/article/23/11/17-1013-Techapp1.pdf>). Subsequently, additional commercial and backyard flocks in Alabama, Kentucky, and Georgia were identified to have H7N9 LPAI through zone and routine surveillance. To trace

the origin and understand their genetic relationship, we performed whole-genome sequencing and comparative phylogenetic analysis of the available H7N9 viruses identified in Tennessee and Alabama.

The Study

We sequenced the complete genomes of 12 HPAI viruses (7 from the first and 5 from the second site), 3 LPAI viruses from Giles County, and 7 LPAI viruses from Alabama by next-generation sequencing (online Technical Appendix Table). We generated maximum-likelihood phylogenies by using RAxML (1) and Bayesian relaxed clock phylogenies by using BEAST version 1.8.3 (2). After removing the insertion sequences at the hemagglutinin (HA) cleavage sites from HPAI viruses, we concatenated all available whole-genome sequences and analyzed them by using the median-joining method implemented by NETWORK version 5.0 (online Technical Appendix) (3).

H7N9 HPAI and LPAI viruses from North America were genetically distinct from those from China, which have been infecting poultry and humans since 2013 (online Technical Appendix Figure 2). All H7N9 viruses shared high levels of nucleotide identity (>99.2%–99.7%) across all 8 gene segments except for the insertion at the HA cleavage site. Insertion sequences, thought to be critical for the HPAI phenotype, elongate the proteolytic cleavage site, making HA more susceptible to cleavage by ubiquitous proteases. The insertion sequence at the HA cleavage site (PENPKTDRKSRHRRIR/G, insertion sequence is underlined) in H7 viruses had 100% sequence homology to chicken 28S rRNA (GenBank accession no. AC147447.3), suggesting the mutation occurred during virus replication in chickens. Similar events of chicken rRNA insertion have been reported in the North America H7N3 virus lineage in poultry (4). All previously reported H7 HPAI viruses had insertions near the HA cleavage site ranging from 6 to 54 nt (5).

An H7N9 LPAI closely related to the Tennessee and Alabama H7N9 viruses was previously detected on September 7, 2016, in a Wildlife Services wild bird surveillance pooled oropharyngeal and cloacal swab sample collected from a blue-winged teal in Goshen County, Wyoming, geographically located within the North American Central Migratory Flyway. The LPAI A/blue-winged teal/Wyoming/AH0099021/2016(H7N9) virus (BWT/WY/2016) shared

Author affiliations: US Department of Agriculture, Athens, Georgia, USA (D.-H. Lee, D.E. Swayne); US Department of Agriculture, Ames, Iowa, USA (M.K. Torchetti, M.L. Killian); National Centre for Foreign Animal Disease, Winnipeg, Manitoba, Canada (Y. Berhane)

DOI: <https://doi.org/10.3201/eid2311.171013>

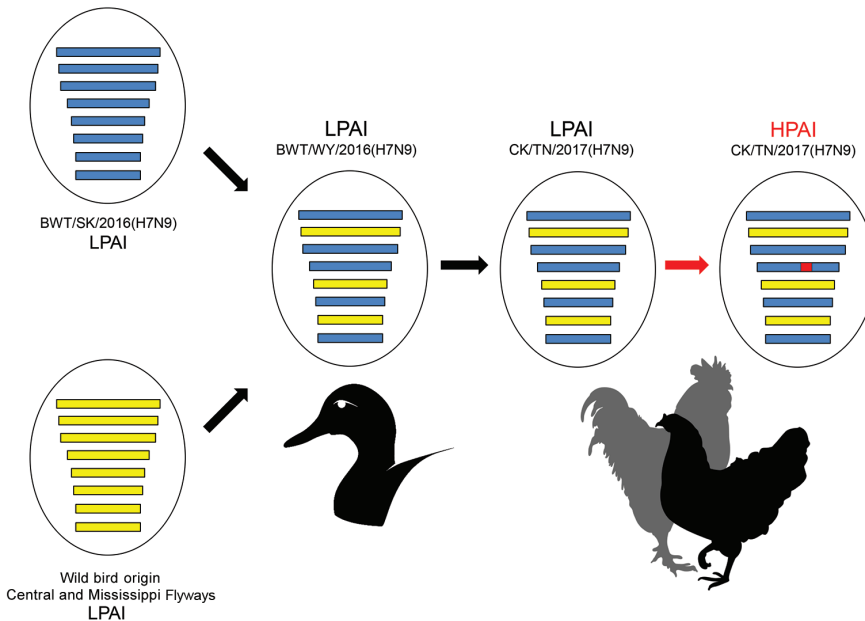


Figure 1. Genome constellation of influenza A(H7N9) viruses. Viruses are represented by ovals containing horizontal bars that represent the 8 influenza gene segments (from top to bottom: polymerase basic 2, polymerase basic 1, polymerase acidic, hemagglutinin, nucleoprotein, neuraminidase, matrix, and nonstructural). A genome reassortment event between the H7N9 virus from Saskatchewan, Canada (blue segments) and viruses from wild birds of the US Central and Mississippi Migratory Flyways (yellow segments) led to the genome assortment present in the Wyoming LPAI virus (BWT/WY/2016). The genome constellation of BWT/WY/2016 is the same as those of the Tennessee H7N9 viruses. A red bar in the hemagglutinin gene of the HPAI virus indicates the insertion at the hemagglutinin cleavage site. HPAI, highly pathogenic avian influenza; LPAI, low pathogenicity avian influenza.

a high level of nucleotide identity (>99.1%–99.8%) with the H7N9 outbreak strain across all 8 gene segments and appeared to be a precursor of the H7N9 HPAI virus that caused the outbreak among poultry (Figure 1; online Technical Appendix Figures 3, 4). Surveillance in Canada led to the identification of a similar virus, A/blue-winged teal/Saskatchewan/109–701/2016(H7N9) (BWT/SK/2016), on August 12, 2016. In phylogenetic analyses, 5 genes (polymerase basic 2, polymerase acidic, HA, neuraminidase, nonstructural) from BWT/WY/2016, BWT/SK/2016, and the H7N9 outbreak isolates clustered together (online Technical Appendix Figure 2, panels A–C, E, H). The polymerase basic 1, nucleoprotein, and matrix genes of BWT/WY/2016 and H7N9 outbreak isolates were derived from a variety of different North America lineage LPAI viruses circulating in the Central and Mississippi Migratory Flyways during 2016 (online Technical Appendix Figure 2, panels D, F, G).

A previous report suggests that the genomes of North America wild bird lineage influenza A viruses are evolving through a remarkably high rate of genome reassortment, forming transient genome constellations that rapidly change

with no apparent pattern of gene segment association (6). In contrast, a high level of nucleotide identity among all segments of the BWT/WY/2016 and H7N9 outbreak isolates (online Technical Appendix Figure 4) suggests that this genome constellation might have been maintained in the wild bird population since its emergence in 2016, with subsequent dissemination to poultry in the southeastern states in 2017.

The median-joining phylogenetic network analysis suggests separate introductions occurred from a common source into Tennessee and Alabama (Figure 2). The estimated time to most recent common ancestor of the HA genes was October 5, 2016 (95% Bayesian credible interval August 8, 2016–December 10, 2016) (Table), corresponding with the waterfowl fall migration season and time of BWT/WY/2016 sample collection. The LPAI viruses identified at Alabama broiler breeder farms were probably introduced separately. The network analysis also suggested that the HPAI and LPAI viruses identified at chicken farms in Tennessee probably originated from a common LPAI virus, and a single mutational event led to the HPAI virus that was detected at the first farm and

Table. Times to most recent common ancestors of H7N9 viruses, Tennessee and Alabama, USA, March 2017*

| Virus clusters (no. taxa)† | tMRCA‡ | BCI 95% | Posterior probability |
|--|-------------|-------------------------|-----------------------|
| Tennessee and Alabama LPAI and HPAI viruses (22) | 2016 Oct 5 | 2016 Aug 8–2016 Dec 10 | 1.00 |
| Tennessee LPAI and HPAI viruses (15) | 2016 Dec 21 | 2016 Nov 7–2017 Feb 3 | 1.00 |
| Tennessee LPAI virus (3) | 2017 Jan 23 | 2016 Dec 3–2017 Feb 25 | 0.98 |
| Tennessee HPAI virus (12) | 2017 Jan 30 | 2017 Jan 1–2017 Feb 25 | 1.00 |
| Alabama LPAI virus from backyard guinea fowl (3) | 2017 Jan 8 | 2016 Nov 18–2017 Feb 21 | 1.00 |
| Alabama LPAI virus from commercial chicken (3) | 2017 Jan 26 | 2016 Dec 10–2017 Mar 8 | 1.00 |

*BCI, Bayesian credible interval; HPAI, highly pathogenic avian influenza; LPAI, low pathogenicity avian influenza; tMRCA, time to most recent common ancestor.

†See online Technical Appendix Table (<https://wwwnc.cdc.gov/EID/article/23/11/17-1013-Techapp1.pdf>) for specific virus strains used in analysis.

‡Times to most recent common ancestors of hemagglutinin segment.

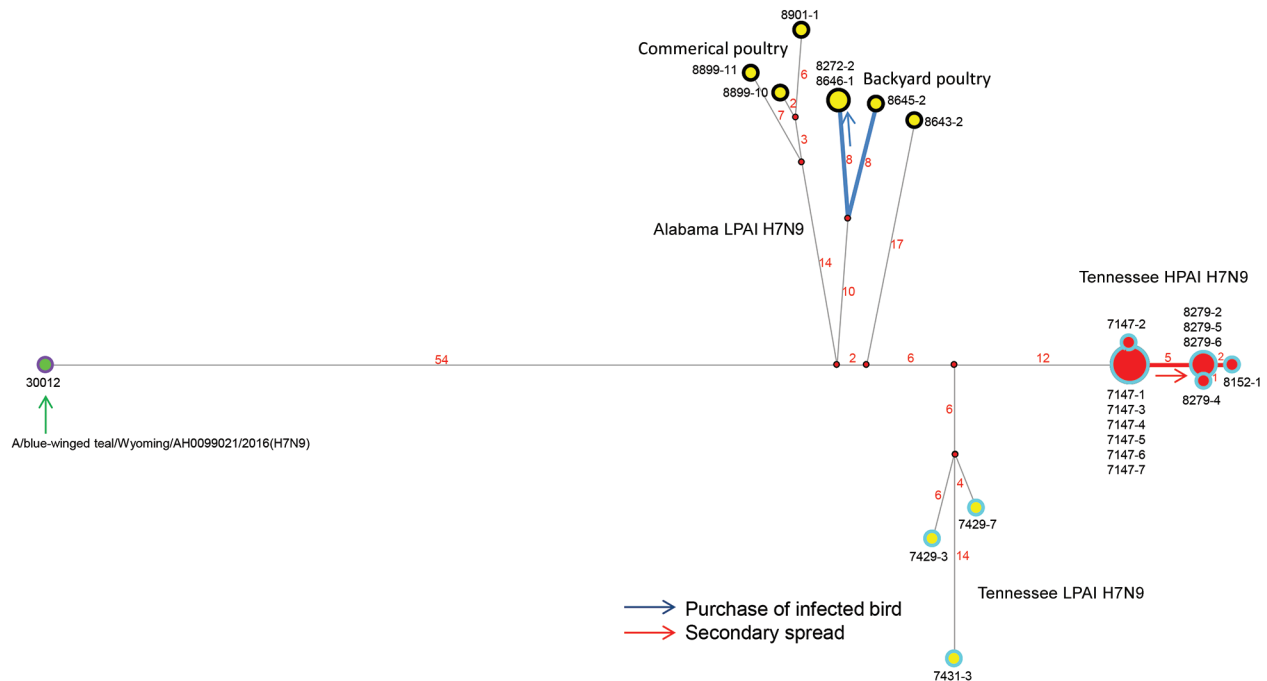


Figure 2. Median-joining phylogenetic network of influenza A(H7N9) viruses, United States, 2017. The median-joining network was constructed from concatenated H7N9 virus genomes containing all 8 segments. This network includes all the most parsimonious trees linking the sequences. Each unique sequence is represented by a circle sized relative to its frequency in the dataset. Isolates are colored according to the sample: red inner circle represents HPAI in poultry, yellow inner circle represents LPAI in poultry, green inner circle represents LPAI in a wild bird, purple outer circle represents isolates from Wyoming, black outer circle represents isolates from Alabama, and sky-blue outer circle represents isolates from Tennessee. Bold lines indicate farm-to-farm transmission verified by epidemiologic investigations. Red numbers indicate number of nucleotide changes between isolates. Black numbers are abbreviated isolate names. HPAI, highly pathogenic avian influenza; LPAI, low pathogenicity avian influenza.

subsequently spread to the second (Figure 2). An epidemiologic investigation revealed that delayed carcass disposal at the first site with HPAI virus might have facilitated transmission to the second and that the purchase of an infected guinea fowl caused transmission of an LPAI virus between 2 sites in Alabama. The 8-gene network analysis suggested the potential for ≥ 3 separate virus introductions: 1) LPAI in Alabama commercial poultry, 2) LPAI in backyard Alabama poultry, and 3) LPAI and HPAI in Tennessee commercial poultry. Bayesian phylogenetic analyses indicated high posterior probabilities (>0.98) for each of the clusters of viruses in these introductions; the time to most recent common ancestor of each of these 3 clusters was December 2016–January 2017, corresponding to the wintering season for wild birds in this area (Table). The distribution of cases across 4 states and discovery of antibody-positive flocks with low or no viral RNA identified during routine and zone surveillance during March 2017 together with the phylogenetic analysis indicating a theoretical poultry precursor and variability in viruses from the same farm suggest that the H7N9 virus circulated in the area undetected in poultry before the initial HPAI virus detection.

Conclusions

Whole-genome sequencing and comparative genetic analyses of all available sequences of the North America wild bird H7N9 lineage suggest that the virus in the Wyoming blue-winged teal represents a precursor to the poultry viruses in the southeastern United States and that the mutation from an LPAI virus to an HPAI virus occurred in poultry. Our data suggest that the virus circulated in the region undetected in poultry before the initial HPAI virus detection and that ≥ 3 separate virus introductions occurred. These findings highlight the need for routine and frequent testing of poultry for avian influenza virus because reportable LPAI viruses might circulate without causing any clinical signs.

Dr. Lee is a postdoctoral researcher at the Southeast Poultry Research Laboratory in Athens, Georgia, USA. His research interests include molecular epidemiology and host–pathogen interactions of avian influenza viruses.

References

1. Stamatakis A. RAxML version 8: a tool for phylogenetic analysis and post-analysis of large phylogenies.

- Bioinformatics. 2014;30:1312–3. <http://dx.doi.org/10.1093/bioinformatics/btu033>
- Drummond AJ, Rambaut A. BEAST: Bayesian evolutionary analysis by sampling trees. *BMC Evol Biol.* 2007;7:214. <http://dx.doi.org/10.1186/1471-2148-7-214>
 - Bandelt HJ, Forster P, Röhl A. Median-joining networks for inferring intraspecific phylogenies. *Mol Biol Evol.* 1999;16:37–48. <http://dx.doi.org/10.1093/oxfordjournals.molbev.a026036>
 - Maurer-Stroh S, Lee RT, Gunalan V, Eisenhaber F. The highly pathogenic H7N3 avian influenza strain from July 2012 in Mexico acquired an extended cleavage site through recombination with host 28S rRNA. *Virology.* 2013;51:139. <http://dx.doi.org/10.1016/j.virus.2012.12.013>
 - Swayne DE. *Animal influenza*. 2nd ed. Ames (Iowa): John Wiley & Sons; 2016.
 - Dugan VG, Chen R, Spiro DJ, Sengamalay N, Zaborsky J, Ghedin E, et al. The evolutionary genetics and emergence of avian influenza viruses in wild birds. *PLoS Pathog.* 2008;4:e1000076. <http://dx.doi.org/10.1371/journal.ppat.1000076>

Address for correspondence: David E. Swayne, Southeast Poultry Research Laboratory, US Department of Agriculture, Agricultural Research Service, 934 College Station Rd, Athens, GA 30605, USA; email: david.swayne@ars.usda.gov

October 2016: Disease Patterns



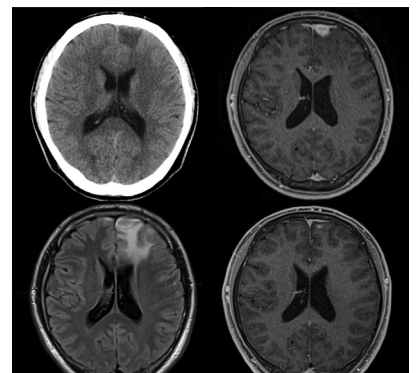
- Outbreaks of Human *Salmonella* Infections Associated with Live Poultry, USA, 1990–2014
- Vaccine-Derived Polioviruses and Children with Primary Immunodeficiency, Iran, 1995–2014
- Infection-Related Deaths from Refractory Juvenile Idiopathic Arthritis
- Accuracy of Diagnosis of Human Granulocytic Anaplasmosis in China
- Population-Level Effects of Human Papillomavirus Vaccination Programs on Infection with Nonvaccine Human Papillomavirus Genotypes
- Cat-Scratch Disease in the United States, 2005–2013
- Community- and Healthcare-Associated *Clostridium difficile* Infections, Finland, 2008–2013

- Carbapenem Resistance in Clonally Distinct Clinical Strains of *Vibrio fluvialis* Isolated from Diarrheal Samples
- Whole-Genome Characterization of Epidemic *Neisseria meningitidis* Serogroup C and Resurgence of Serogroup W in Niger, 2015
- Ebola Virus Disease in Children, Sierra Leone, 2014–2015
- Systematic Review and Meta-Analysis of the Treatment Efficacy of Doxycycline for Rectal Lymphogranuloma Venereum in Men who have Sex with Men



- Increase in Meningococcal Serogroup W Disease, Victoria, Australia, 2013–2015
- Distinct Zika Virus Lineage in Salvador, Bahia, Brazil
- Streptococcus suis* Serotype 2 Capsule In Vivo
- Estimation of Severe MERS-CoV Cases in the Middle East, 2012–2016

- Hypervirulent Clone of Group B *Streptococcus* Serotype III Sequence Type 283, Hong Kong, 1993–2012
- Chikungunya Virus in Febrile Humans and *Aedes aegypti* Mosquitoes, Yucatan, Mexico
- Daily Reportable Disease Spatiotemporal Cluster Detection, New York, New York, USA, 2014–2015
- Viral RNA in Blood as Indicator of Severe Outcome in Middle East Respiratory Syndrome Coronavirus Infection
- Sporotrichosis-Associated Hospitalizations, United States, 2000–2013
- Effect of Geography on the Analysis of Coccidioidomycosis-Associated Deaths, United States



**EMERGING
INFECTIOUS DISEASES**

<https://wwwnc.cdc.gov/eid/articles/issue/22/10/table-of-contents>

Highly Pathogenic Avian Influenza A(H7N9) Virus, Tennessee, USA, March 2017

Technical Appendix

Methods for Genome Sequencing and Phylogenetic Analysis

Nucleotide Sequencing

Complete genomes of 12 highly pathogenic and 10 low pathogenicity avian influenza viruses were sequenced in this study. We extracted viral RNA from samples using the MagMAX Viral RNA Isolation Kit (Ambion, Austin, TX, USA) and synthesized complementary DNA by performing reverse transcription with SuperScript III (Invitrogen, Carlsbad, CA, USA). We amplified all 8 segments of the isolates by PCR and conducted complete genome sequencing using the Miseq system (Illumina, San Diego, CA, USA) and Ion Torrent Personal Genome Machine (PGM) (Thermo Fisher Scientific, Waltham, MA, USA). For the Illumina Miseq system, the Nextera XT DNA Sample Preparation Kit (Illumina) was used according to the manufacturer's instructions to generate multiplexed paired-end sequencing libraries. The dsDNA was fragmented and tagged with adapters by Nextera XT transposase and 12-cycle PCR amplification. We purified fragments on Agencourt AMPure XP beads (Beckman Coulter, Fullerton, CA, USA) and analyzed them with a High Sensitivity DNA Chip and Bioanalyzer (Agilent Technologies, Santa Clara, CA, USA). The barcoded multiplexed library sequencing was performed by using the 300 cycle MiSeq Reagent Kit v2 (Illumina). For Ion Torrent PGM, we purified the PCR product and prepared the DNA libraries with the IonXpress Plus Fragment Library Kit with Ion Xpress barcode adapters. Prepared libraries were quantitated using the Bioanalyzer DNA 1000 (Agilent Technologies). We diluted the quantitated libraries and pooled them for library amplification using the Ion One Touch 2 System and Enrichment System. Following enrichment, DNA was loaded onto an Ion 314 or Ion 316 chip and sequenced using the Ion PGM 200 v2 Sequencing Kit. De novo and directed assembly of genome sequences were carried out using the SeqMan NGen v4 program (<http://www.dnastar.com/t-nextgen-seqman->

ngen.aspx). Nucleotide sequences were deposited in GenBank (accession nos. KY818808-KY818839 and MF357713-MF357856).

Phylogenetic Analysis

We generated maximum-likelihood phylogenies of each gene segment using RAxML and the general time-reversible nucleotide substitution model, with among-site rate variation modeled by using a discrete gamma distribution (*I*). We generated bootstrap support values using 1,000 rapid bootstrap replicates. We performed Bayesian relaxed clock phylogenetic analysis of the hemagglutinin (HA) gene using BEAST v1.8.3 (2). We applied an uncorrelated log-normal distribution relaxed clock method, the Hasegawa–Kishino–Yano nucleotide substitution model, and the Bayesian skyline coalescent prior. A Markov Chain Monte Carlo method to sample trees and evolutionary parameters was run for 50 million generations. At least 3 independent chains were combined to ensure adequate sampling of the posterior distribution of trees. BEAST output was analyzed with TRACER v1.4 (<https://beast.bio.ed.ac.uk/tracer>) with 5% burn-in. A maximum clade credibility tree was generated for each data set by using TreeAnnotator in BEAST. We used FigTree v1.4.2 (<https://tree.bio.ed.ac.uk/>) to visualize trees. To better visualize the genetic relatedness of viruses, all available full genome sequences were concatenated, with the highly pathogenic avian influenza virus modified to remove the nucleotide insertion at the HA cleavage site, and analyzed using the median-joining method implemented by NETWORK v5.0 (3).

Serology

Any antibody detection by National Poultry Improvement Program–authorized laboratories using influenza A serologic testing (ELISA or agar gel immunodiffusion test) was forwarded to the National Veterinary Services Laboratories (Ames, Iowa, USA) for confirmation testing by HA (H1-H16) and neuraminidase (N1-N9) inhibition testing.

References

1. Stamatakis A. RAxML version 8: a tool for phylogenetic analysis and post-analysis of large phylogenies. *Bioinformatics*. 2014;30:1312–3. [PubMed](#)
<http://dx.doi.org/10.1093/bioinformatics/btu033>
2. Drummond AJ, Rambaut A. BEAST: Bayesian evolutionary analysis by sampling trees. *BMC Evol Biol*. 2007;7:214. [PubMed](#) <http://dx.doi.org/10.1186/1471-2148-7-214>

3. Bandelt HJ, Forster P, Röhl A. Median-joining networks for inferring intraspecific phylogenies. *Mol Biol Evol.* 1999;16:37–48. [PubMed http://dx.doi.org/10.1093/oxfordjournals.molbev.a026036](http://dx.doi.org/10.1093/oxfordjournals.molbev.a026036)

Technical Appendix Table. Avian influenza viruses used in study, Tennessee and Alabama, United States, March 2017

| Site | Date collected | Virus strain designation | County | Pathotype |
|------|----------------|--|---------|-----------|
| A | 2017 Mar 3 | A/chicken/Tennessee/17-007147-1/2017(H7N9), A/chicken/Tennessee/17-007147-2/2017(H7N9), A/chicken/Tennessee/17-007147-3/2017(H7N9), A/chicken/Tennessee/17-007147-4/2017(H7N9), A/chicken/Tennessee/17-007147-5/2017(H7N9), A/chicken/Tennessee/17-007147-6/2017(H7N9), A/chicken/Tennessee/17-007147-7/2017(H7N9) | Lincoln | HPAI |
| B | 2017 Mar 13 | A/chicken/Tennessee/17-008152-1/2017(H7N9) | Lincoln | HPAI |
| B | 2017 Mar 14 | A/chicken/Tennessee/17-008279-2/2017(H7N9), A/chicken/Tennessee/17-008279-4/2017(H7N9), A/chicken/Tennessee/17-008279-5/2017(H7N9), A/chicken/Tennessee/17-008279-6/2017(H7N9) | Lincoln | HPAI |
| C | 2017 Mar 6 | A/chicken/Tennessee/17-007429-3/2017(H7N9), A/chicken/Tennessee/17-007429-7/2017(H7N9) | Giles | LPAI |
| C | 2017 Mar 6 | A/chicken/Tennessee/17-007431-3/2017(H7N9) | Giles | LPAI |
| D | 2017 Mar 12 | A/guinea_fowl/Alabama/17-008272-2/2017(H7N9) | Jackson | LPAI |
| E | 2017 Mar 15 | A/duck/Alabama/17-008643-2/2017(H7N9) | Madison | LPAI |
| F | 2017 Mar 14 | A/guinea_fowl/Alabama/17-008645-2/2017(H7N9) | Jackson | LPAI |
| G | 2017 Mar 14 | A/guinea_fowl/Alabama/17-008646-1/2017(H7N9) | DeKalb | LPAI |
| H | 2017 Mar 19 | A/chicken/Alabama/17-008899-10/2017(H7N9), A/chicken/Alabama/17-008899-11/2017(H7N9) | Cullman | LPAI |
| H | 2017 Mar 17 | A/chicken/Alabama/17-008901-1/2017(H7N9) | Cullman | LPAI |

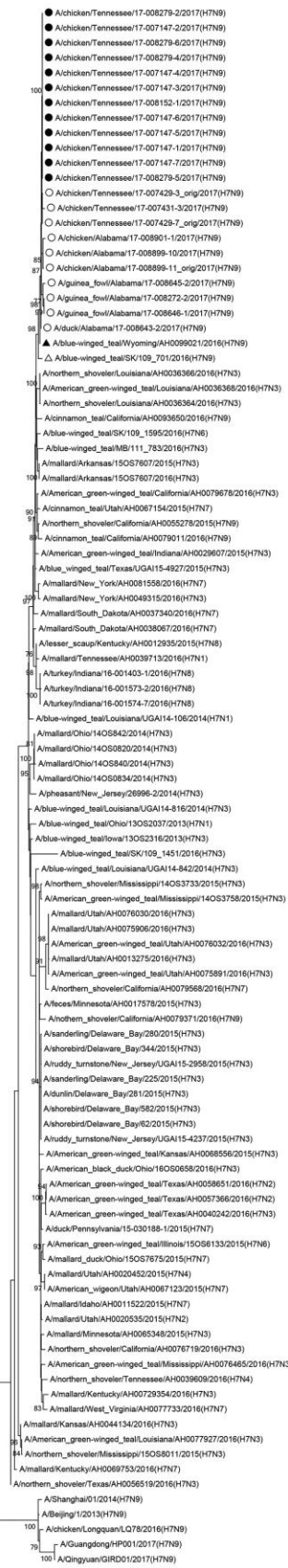
*HPAI, highly pathogenic avian influenza; LPAI, low pathogenicity avian influenza. Six additional premises in Alabama, Tennessee, Kentucky, and Georgia were identified as H7N9 LPAI affected, but insufficient viral RNA prevented virus sequencing and analysis.



Technical Appendix Figure 1. Outbreak map of H7N9 low pathogenicity (yellow) and highly pathogenic (red) avian influenza.

Technical Appendix Figure 2 (following pages). Maximum-likelihood phylogeny of H7N9 virus genes A) hemagglutinin, B) neuraminidase, C) polymerase basic 2, D) polymerase basic 1, E) polymerase acidic, F) nucleoprotein, G) matrix, and H) nonstructural. Numbers along branches indicate bootstrap values >70%. Brackets indicate the genetic subgroups. Scale bar indicates nucleotide substitutions per site. The following 4 symbols were used to indicate avian influenza H7N9 viruses: black circle for highly pathogenic H7N9, open circle for low pathogenicity H7N9, black triangle for A/blue-winged teal/Wyoming/AH0099021/2016, and open triangle for A/blue-winged teal/Saskatchewan/109–701/2016. HA, hemagglutinin; M, matrix; NA, neuraminidase; NP, nucleoprotein; NS, nonstructural; PA, polymerase acidic; PB1, polymerase basic 1; PB2, polymerase basic 2.

(A) HA



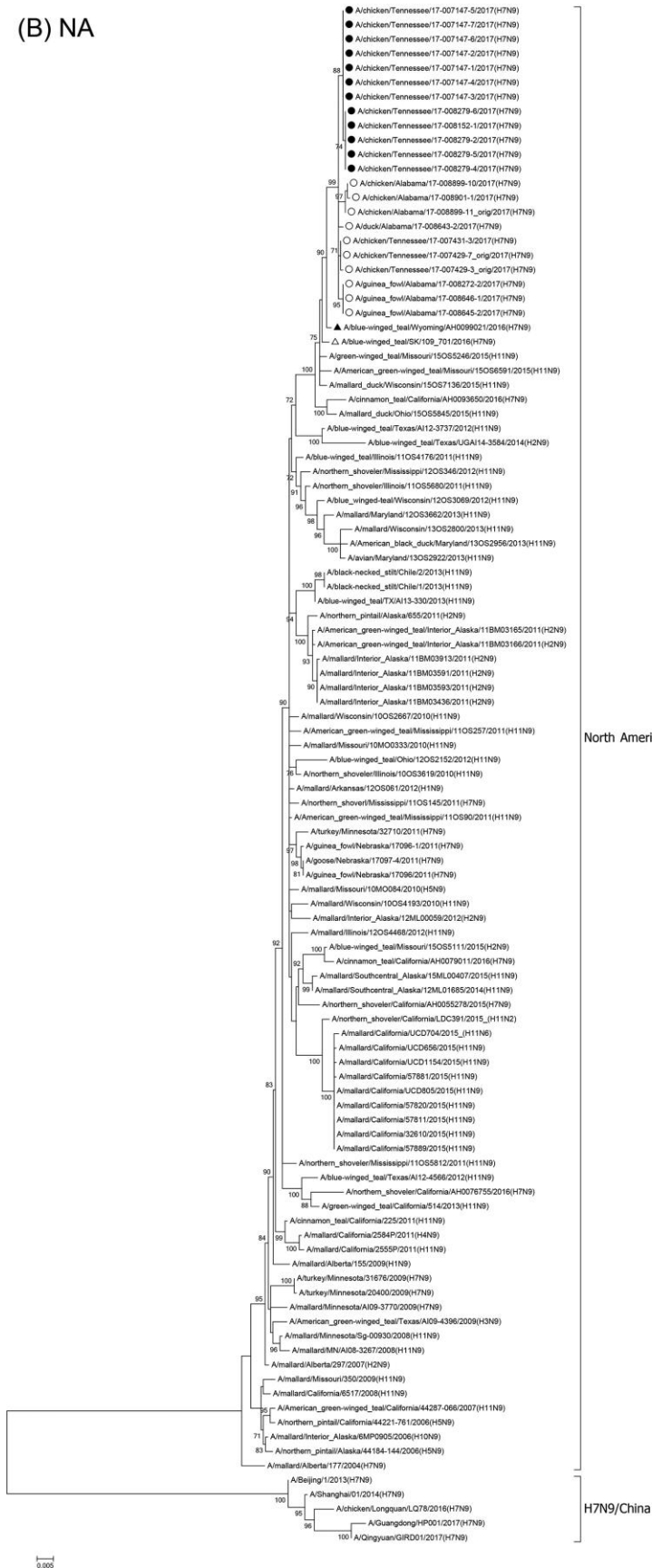
North American lineage

H7N9/China

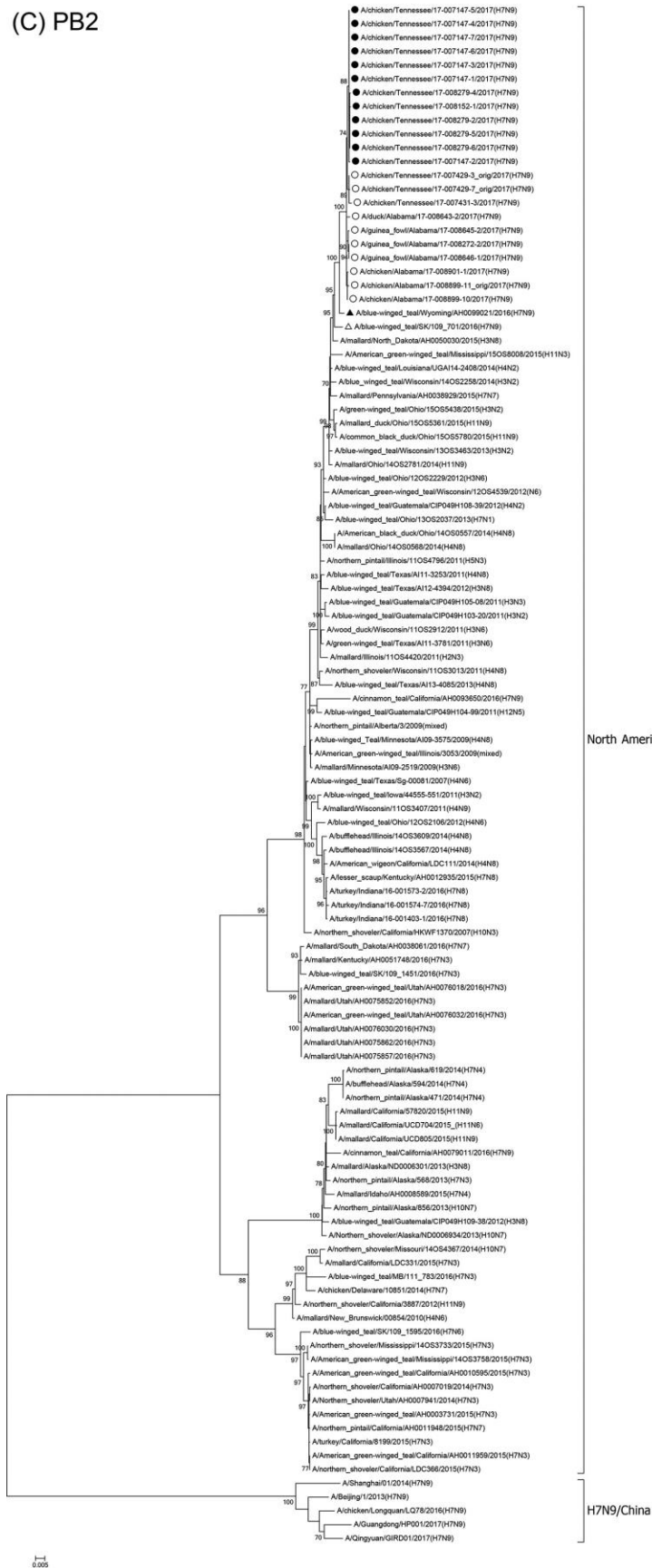


H
0.005

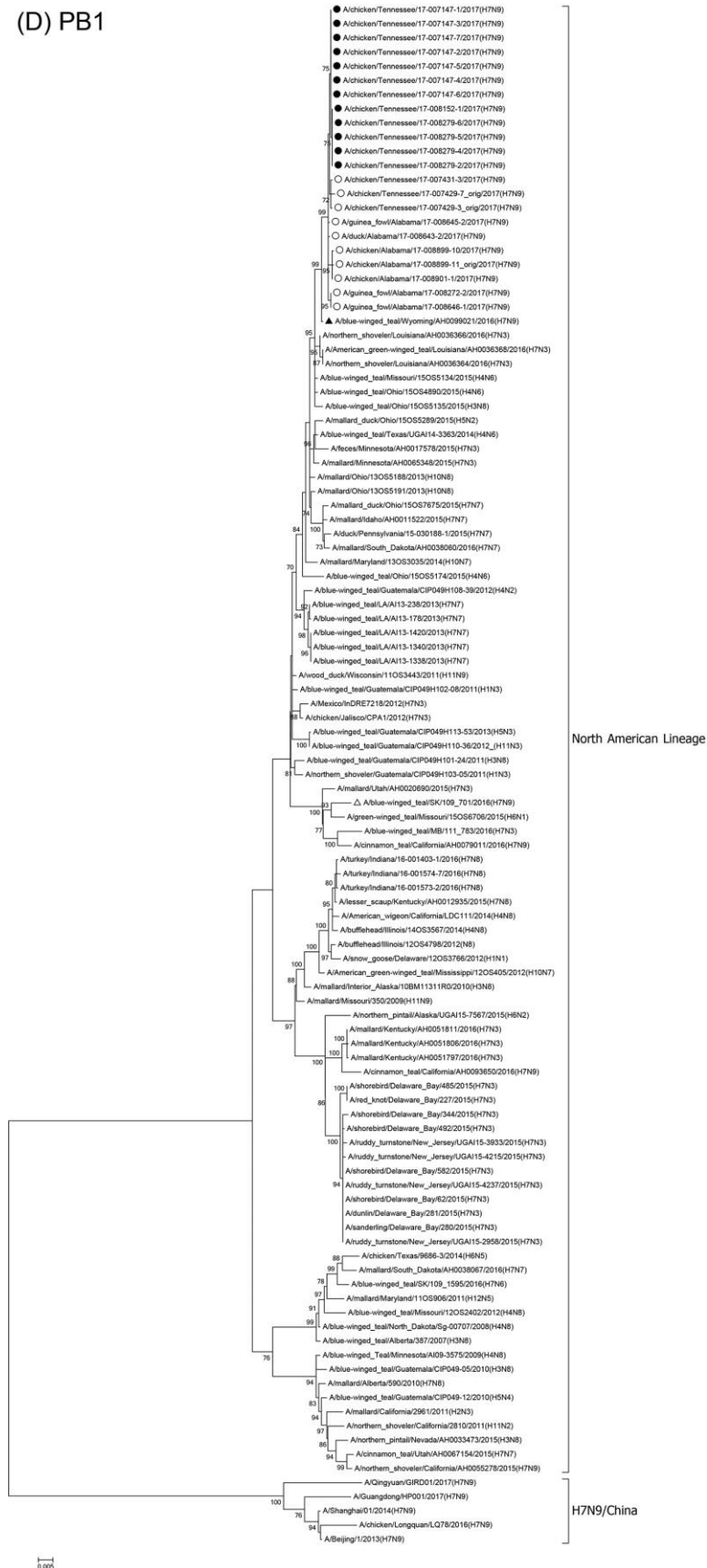
(B) NA



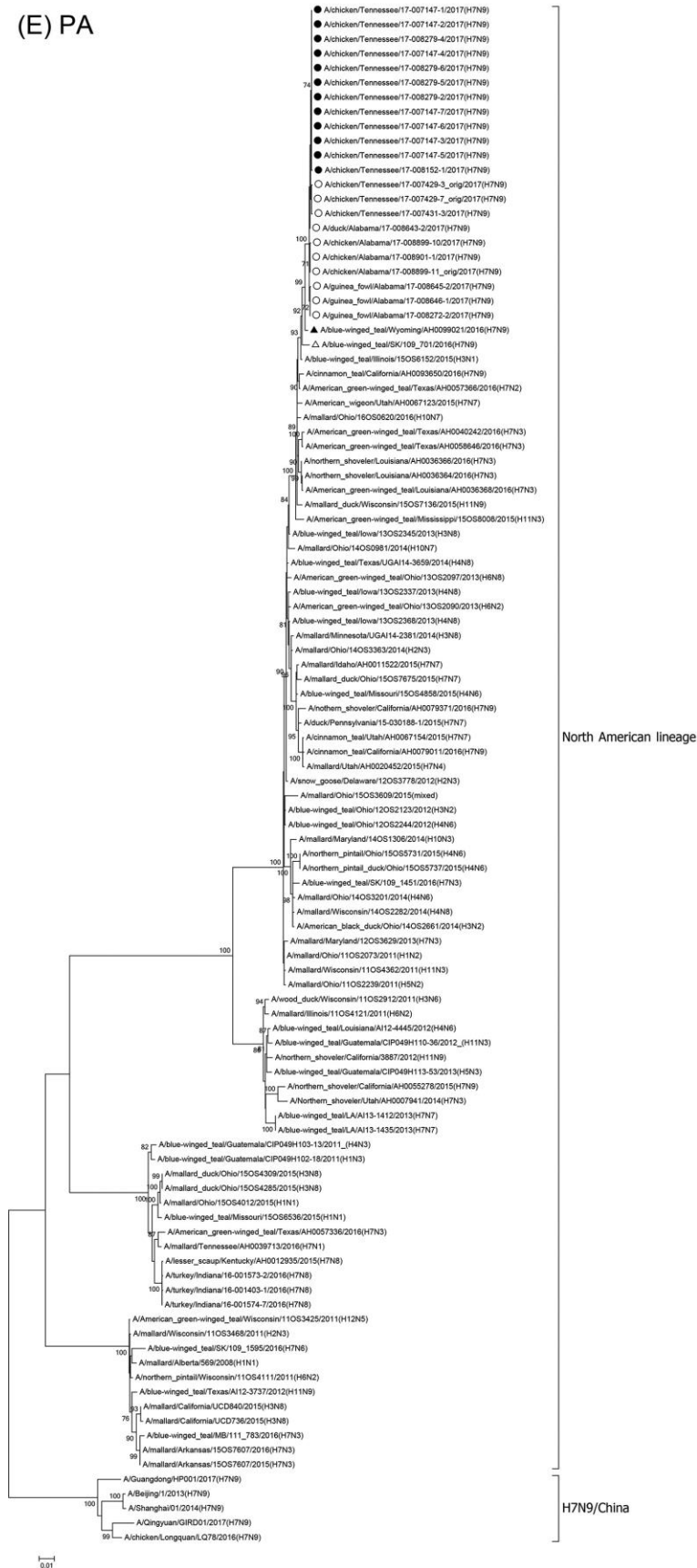
(C) PB2



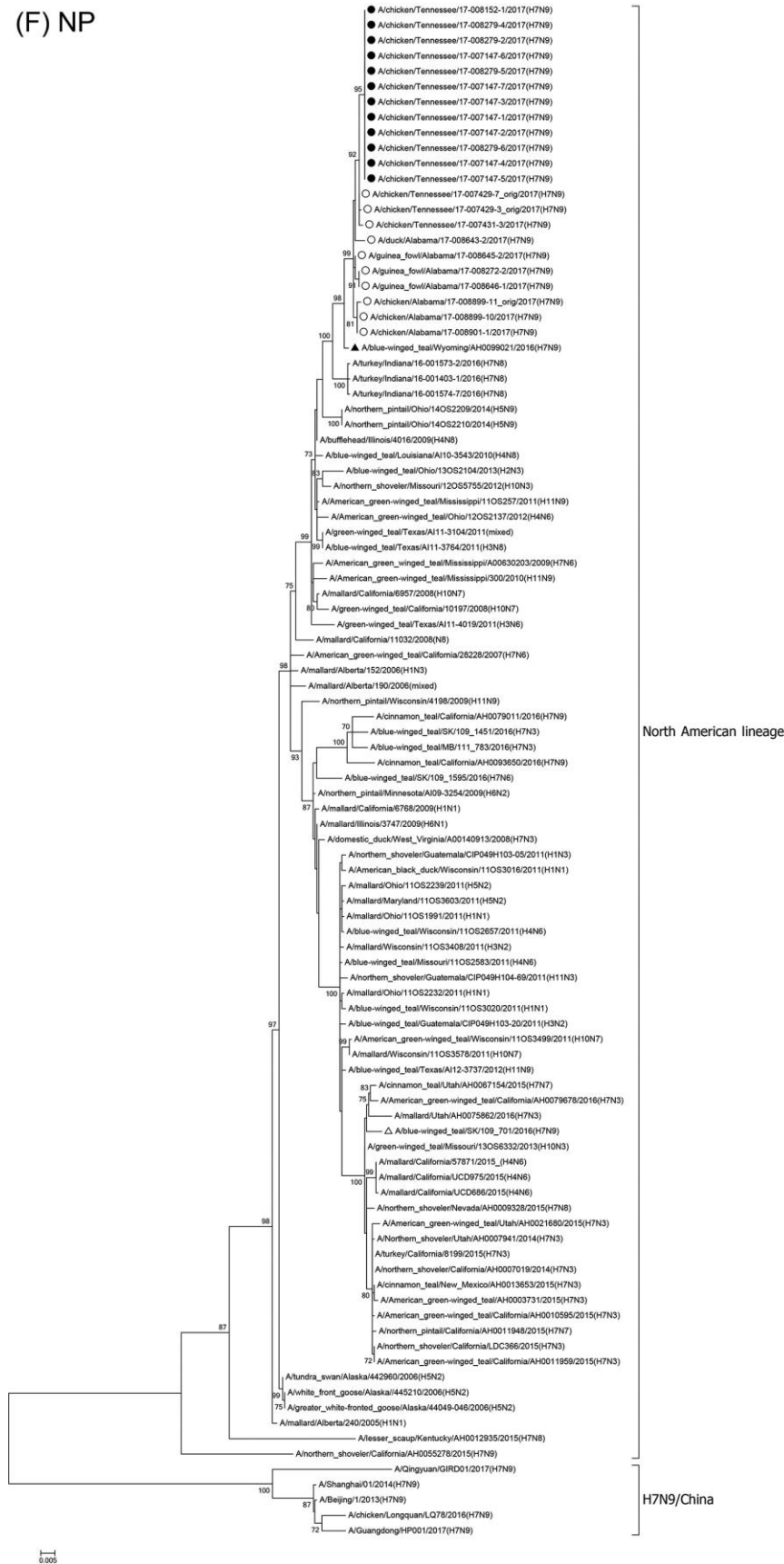
(D) PB1



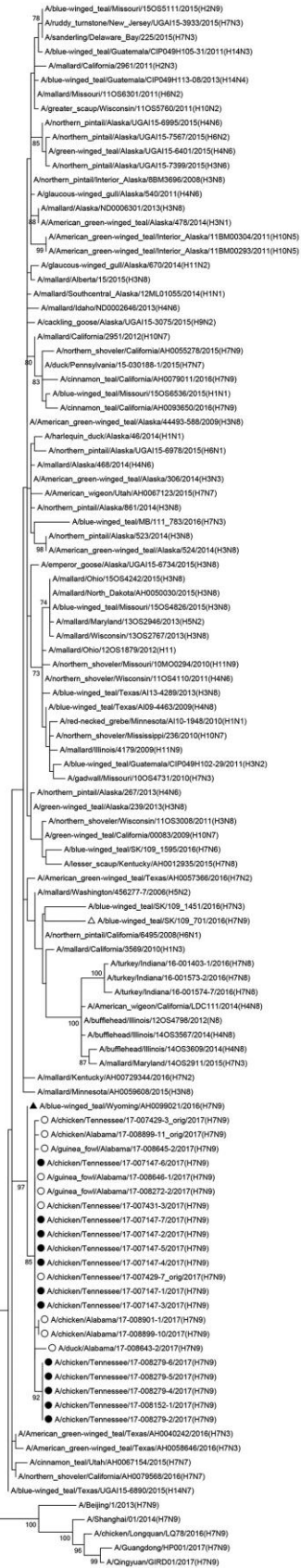
(E) PA



(F) NP



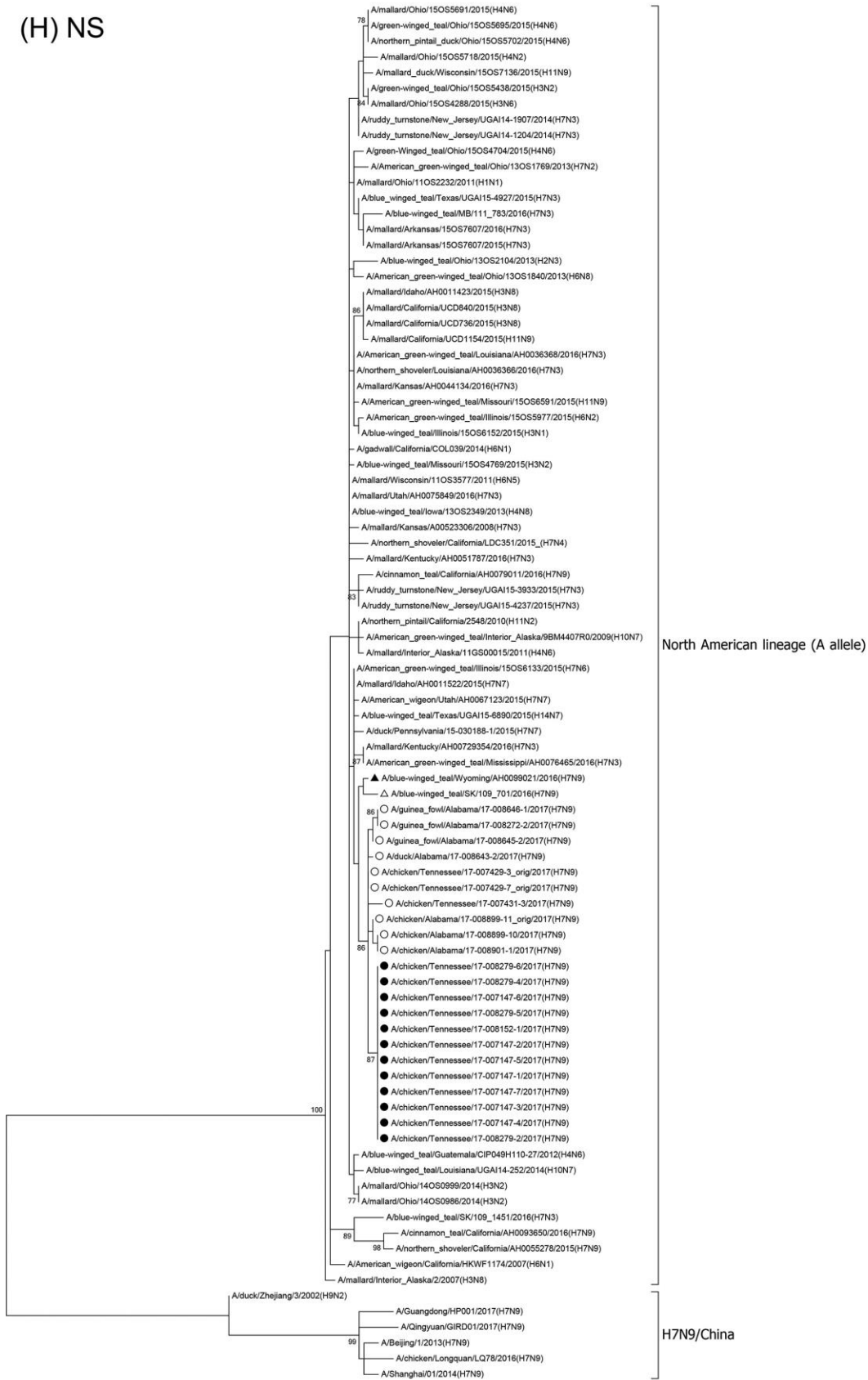
(G) M



North American lineage

H7N9/China

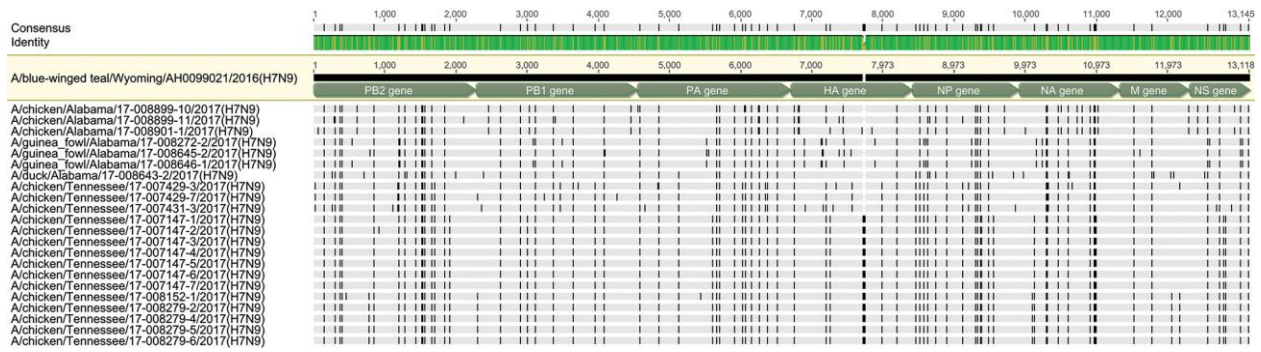
(H) NS



0.002



Technical Appendix Figure 3. Relaxed clock phylogenetic tree of H7N9 virus hemagglutinin gene. The phylogenetic relationships and temporal evolutionary history have been estimated by molecular clock analysis. Highly pathogenic avian influenza isolates (red), low pathogenicity avian influenza virus isolates (orange), and A/blue-winged teal/Wyoming/AH0099021/2016 (green) are indicated.



Technical Appendix Figure 4. Nucleotide sequence alignment of complete genome sequences of H7N9 viruses, United States, 2017. Alignment of the complete genome sequences was performed using MAFFT (<http://mafft.cbrc.jp/alignment/software/>). The complete genome sequence of low pathogenicity avian influenza virus A/blue-winged teal/Wyoming/AH0099021/2016(H7N9) was placed on top of the alignment and served as the reference. Vertical lines indicate nucleotide differences from the reference sequence. HA, hemagglutinin; M, matrix; NA, neuraminidase; NP, nucleoprotein; NS, nonstructural; PA, polymerase acidic; PB1, polymerase basic 1; PB2, polymerase basic 2.