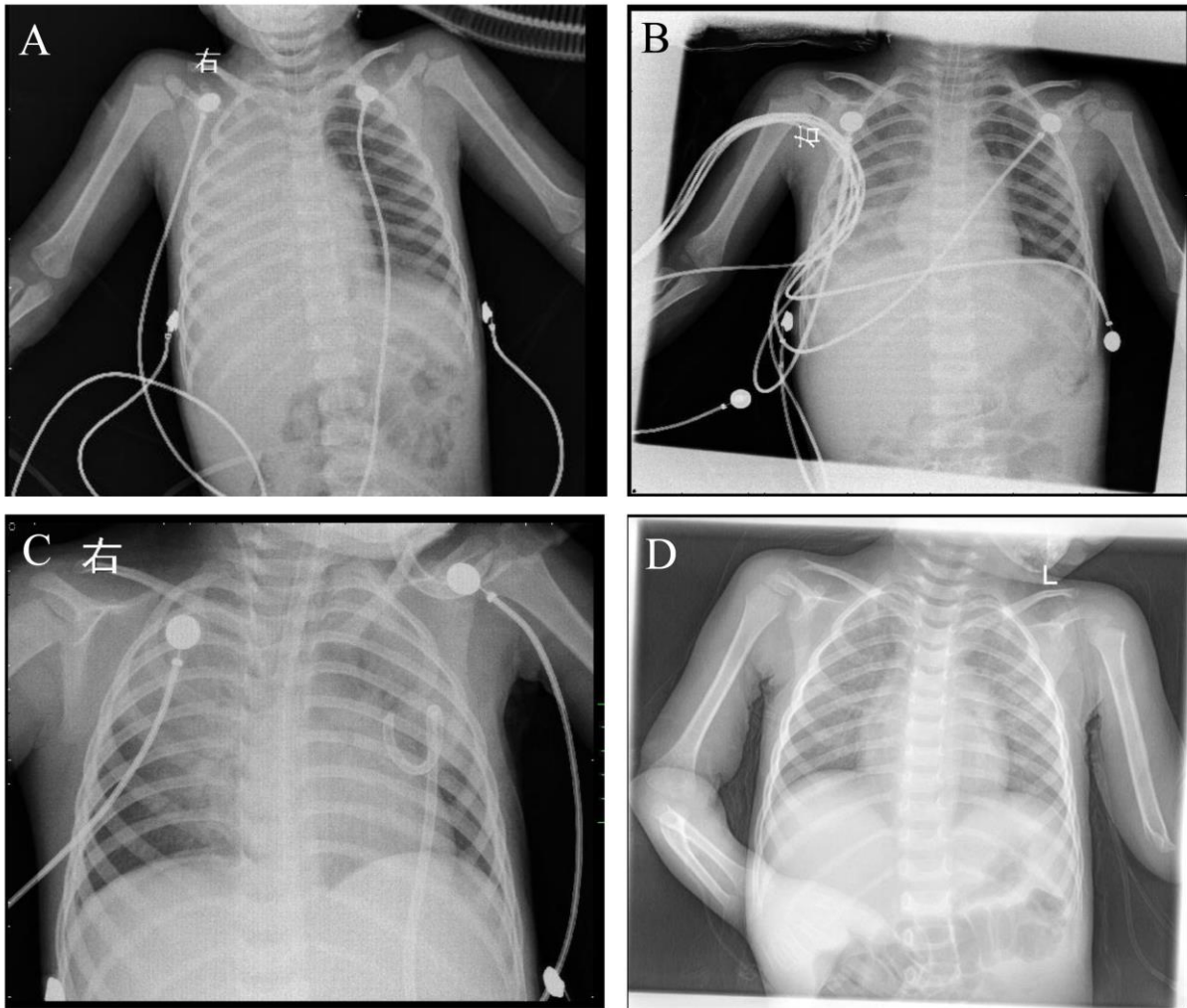


# Reassortant Eurasian Avian-Like Influenza A(H1N1) Virus from a Severely Ill Child, Hunan Province, China, 2015

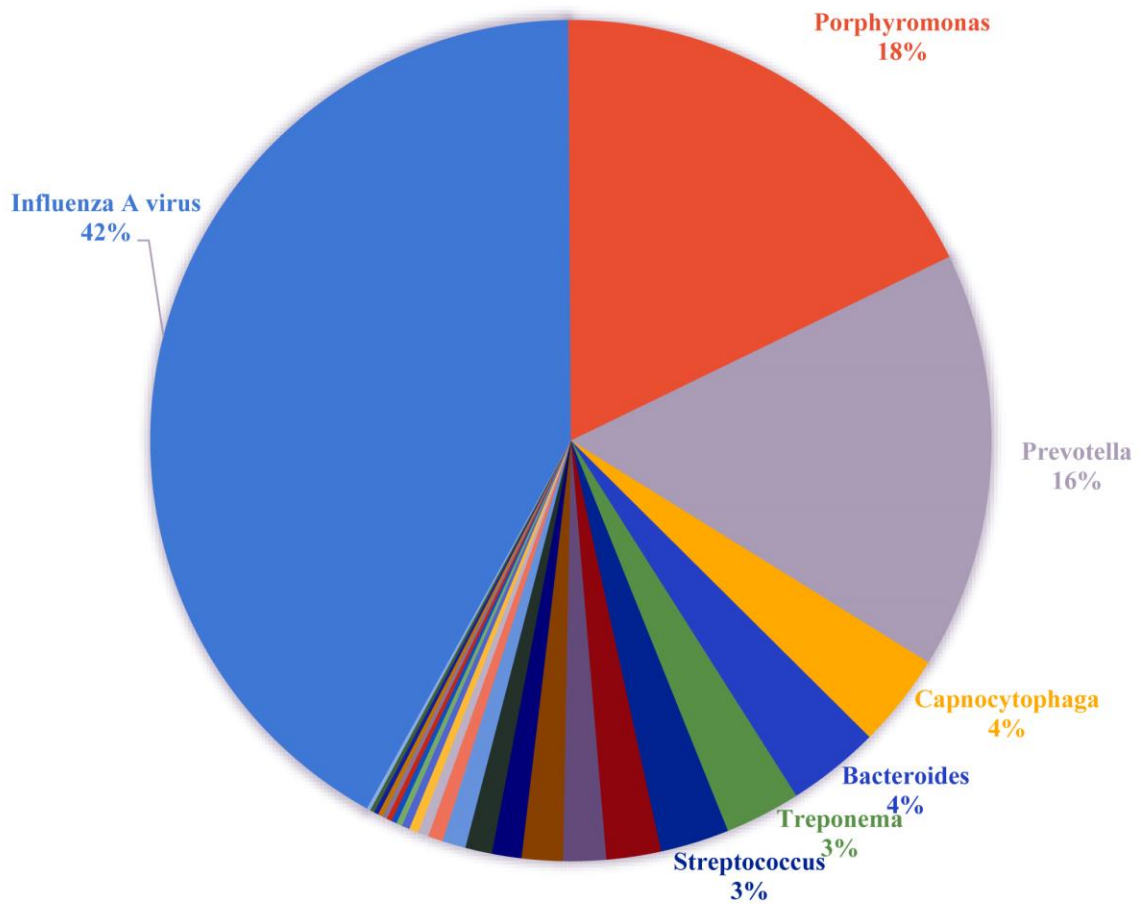
## Technical Appendix

**Technical Appendix Table.** Amino acid differences on HA and NA proteins between A/Hunan/42443/2015 and A/Jiangsu/1/2011 (JS1) viruses

Proteins	HA (H1 numbering)						NA													
	56	236	259	260	355	398	12	16	45	46	76	79	86	255	286	289	314	321	340	382
A/Hunan/42443/2015	S	D	K	K	Q	F	S	A	Q	S	T	V	A	I	N	I	I	I	P	R
A/Jiangsu/1/2011	N	H	N	E	R	C	L	T	K	P	A	A	V	V	S	T	M	V	S	K

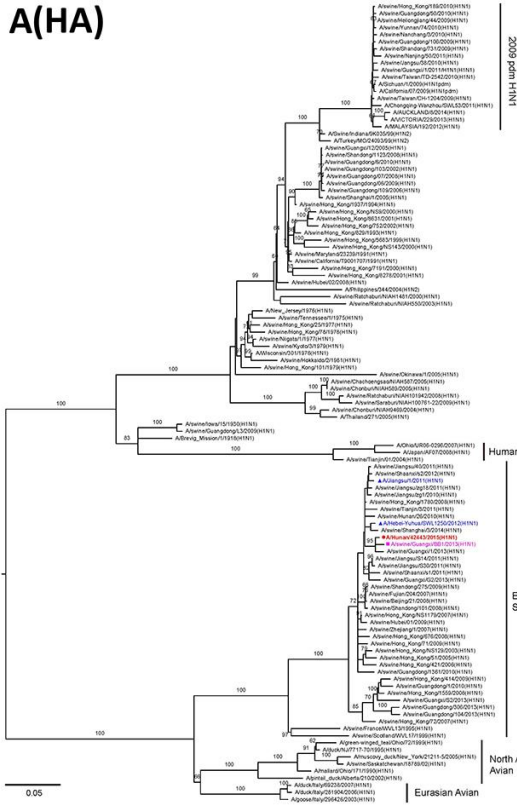


**Technical Appendix Figure 1.** Chest radiographs of the investigated patient on day 2 (A), day 6 (B), day 16 (C), and day 24 (D) after illness onset. A) A right pleural effusion and a collapsed lower right lung were found. B) A small amount of right pleural effusion and patchy shadow was observed in the lower right lung. C) Shadows were observed in bilateral upper lung and part of the lower lung lesions disappeared. D) No obvious abnormalities of the cardiophrenic space was found.

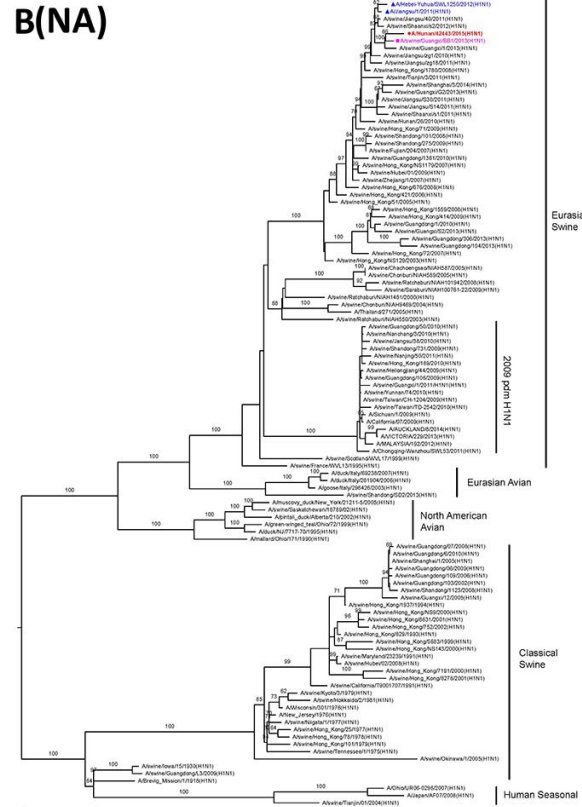


**Technical Appendix Figure 2.** Pie chart of reads assigned to microbes. The influenza A virus accounted for the majority of reads (41.9%) from the sample, while *Porphyromonas* and *Prevotella* species accounted for 17.9% and 16.0%, respectively.

# A(HA)



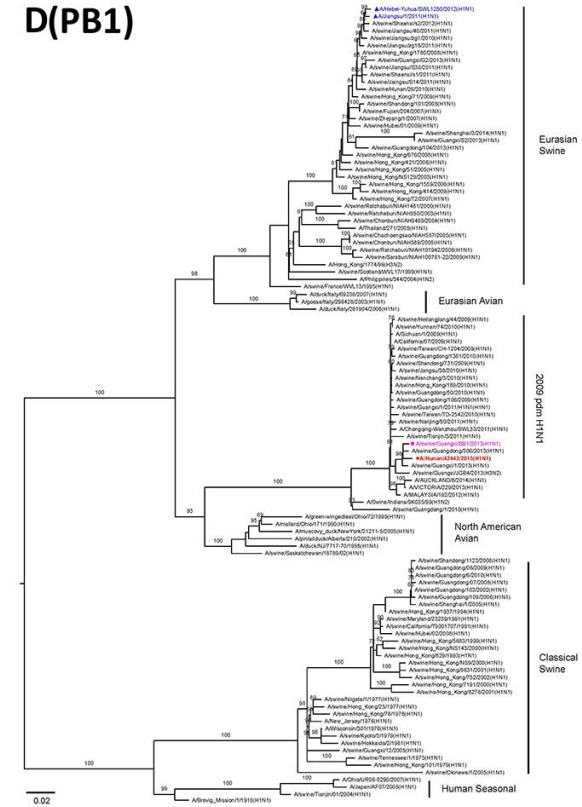
# B(NA)



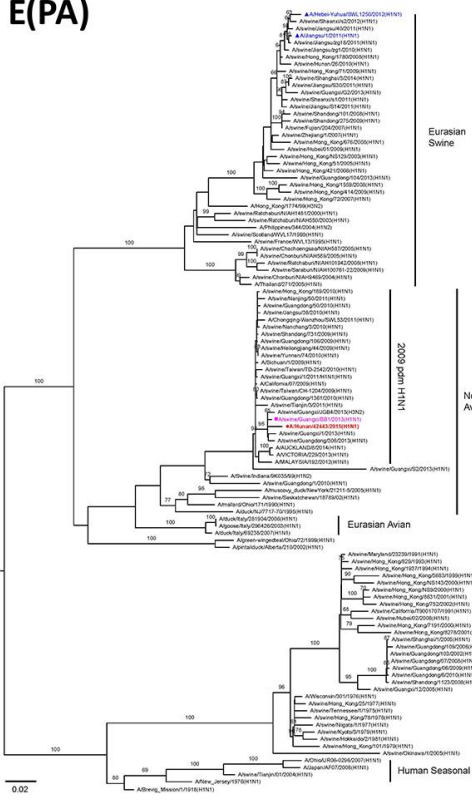
# C(PB2)



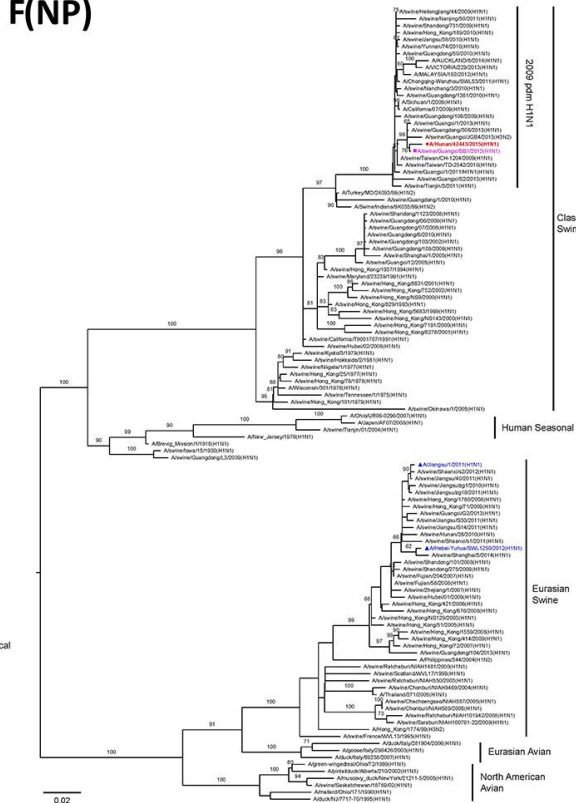
# D(PB1)



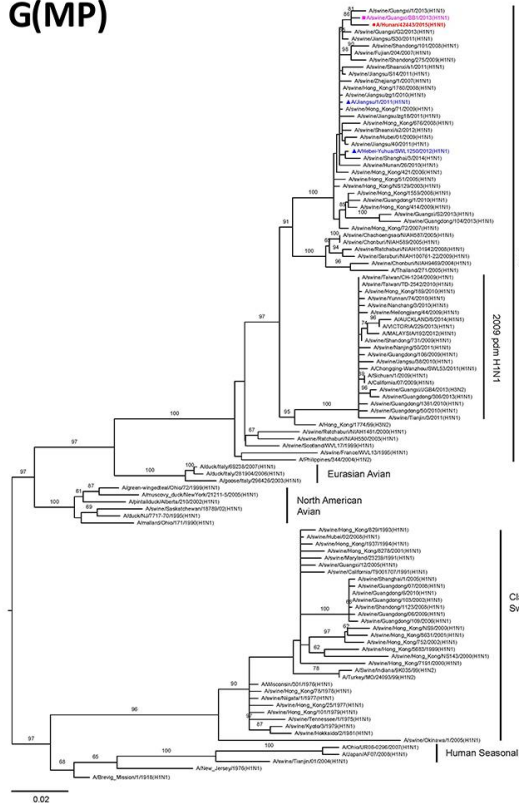
### E(PA)



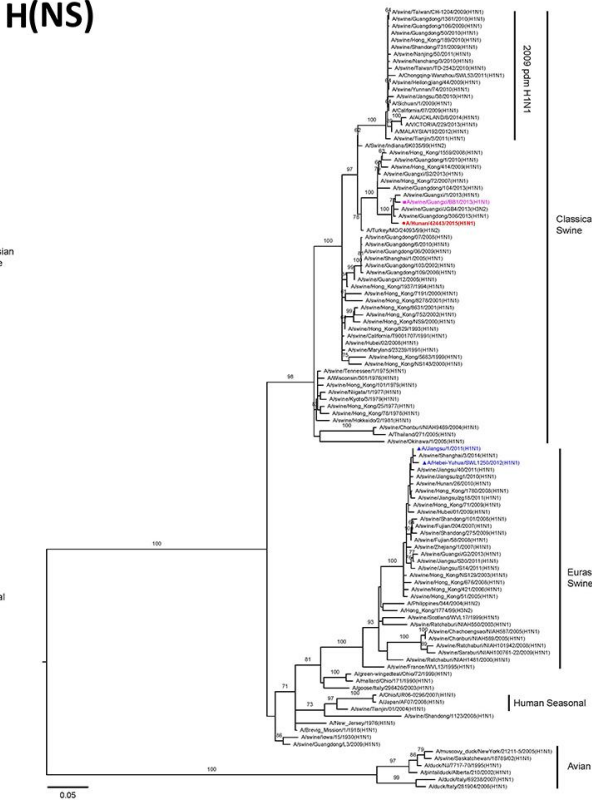
### F(NP)



### G(MP)



### H(NS)



**Technical Appendix Figure 3 (following pages).** Phylogenetic analysis of all eight genes on A/Hunan/42443/2015 (HuN) viruses. Phylogenetic trees of HA (A), NA (B), PB2 (C), PB1 (D), PA (E), NP (F), MP (G), and NS (H) genes. The virus reported in our study (A/Hunan/42443/2015(H1N1), HuN) is highlighted in red, and the EA viruses isolated from mainland China previously are in blue. The virus (A/swine/Guangxi/BB1/2013 (BB1, H1N1)), which shared the highest similarities with HuN virus, is included for analysis in each tree. A solid circle, square, and triangle are shown at the beginning of the HuN, BB1, and 2 human EA H1N1 viruses, respectively.