

Klebsiella pneumoniae in Gastrointestinal Tract and Pyogenic Liver Abscess

Chang-Phone Fung, Yi-Tsung Lin,
Jung-Chung Lin, Te-Li Chen, Kuo-Ming Yeh,
Feng-Yee Chang, Han-Chuan Chuang,
Hau-Shin Wu, Chih-Peng Tseng,
and L. Kristopher Siu

To determine the role of gastrointestinal carriage in *Klebsiella pneumoniae* liver abscess, we studied 43 patients. Bacterial isolates from liver and fecal samples from 10 patients with this condition and 7 healthy carriers showed identical serotypes and genotypes with the same virulence. This finding indicated that gastrointestinal carriage is a predisposing factor for liver abscess.

Klebsiella pneumoniae has emerged as the predominant cause of pyogenic liver abscess in Taiwan and other countries in eastern and Southeast Asia (1–4). This condition is frequently associated with severe complications, including septic endophthalmitis and other extrahepatic lesions, especially in patients with diabetes (1).

In Taiwan, the annual incidence of pyogenic liver abscess has increased steadily from 11.15 cases/100,000 persons in 1996 to 17.59 cases/100,000 persons in 2004, and *K. pneumoniae* was found in 79.9% of culture-positive cases (5). We showed that >3,000 new cases of pyogenic liver abscess were found each year during 2005–2008 (6). However, the pathogenesis of *K. pneumoniae* liver abscess remains unclear, and the source of endogenous or exogenous infections has been debated.

To determine whether strains recovered from liver aspirate samples originated from gastrointestinal flora of patients, we investigated isolates from liver aspirate, nasal swab, saliva, and fecal samples by using genomic analysis. Using serotyping and molecular typing methods,

Author affiliations: Taipei Veterans General Hospital, Taipei, Taiwan (C.P. Fung, Y.T. Lin, T.L. Chen, H.C. Chuang, H.S. Wu, C.P. Tseng); National Yang-Ming University, Taipei (C.P. Fung, Y.T. Lin, T.L. Chen, H.C. Chuang, H.S. Wu, C.P. Tseng); National Defense Medical Center, Taipei (J.C. Lin, K.M. Yeh, F. Y. Chang); National Health Research Institutes, Zhunan, Taiwan (L.K. Siu); and China Medical University, Taichung, Taiwan (L.K. Siu)

DOI: <http://dx.doi.org/10.3201/eid1808.111053>

we systematically investigated the association between isolates from liver aspirates and those from other body sites in patients with *K. pneumoniae* liver abscess. We also investigated *K. pneumoniae* isolates from healthy carriers that were genetically similar to liver abscess isolates to assess whether colonization of virulent *K. pneumoniae* occurs in these persons, which could subsequently lead to development of liver abscess.

The Study

During January 2009–December 2010, a total of 43 adult patients (mean age 68.2 years) with liver aspirate cultures positive for *K. pneumoniae* in Taipei Veterans General Hospital were consecutively enrolled in the study. All cases of *K. pneumoniae* liver abscess were community acquired. Clinical characteristics of patients are shown in Table 1.

To determine whether *K. pneumoniae* liver abscess originated from the gastrointestinal tract of patients, we concomitantly tested all liver aspirate, saliva, nasal swab, fecal, and blood samples by using bacterial culture before patients were treated with antimicrobial drugs. A total of 125 *K. pneumoniae* isolates from 43 patients were obtained. Information on culture-positive sites is shown in the online Appendix Table (wwwnc.cdc.gov/EID/article/18/8/11-1053-TA1.htm). To compare virulence and genetic relatedness of *K. pneumoniae* from liver abscess patients and healthy carriers, we obtained 1,000 *K. pneumoniae* isolates from fecal samples of asymptomatic adults during routine physical examinations at the Tri-Service General Hospital (Taipei, Taiwan).

All clinical *K. pneumoniae* isolates were serotyped by using counter-current immunoelectrophoresis with serotype K antiserum. Isolates with serotypes K1 and K2 were confirmed by PCR (7). All K1 isolates were screened for CC23 representatives by detection of the *allS* gene by using PCR as described (7). Seroepidemiologic study of *K. pneumoniae* isolates from liver abscess patients showed that serotypes K1 and K2 were predominant, accounting for 61% (26/43) and 16% (7/43) of all isolates, respectively.

All K1 isolates had the *allS* gene, which is consistent with results of a study that showed that the virulent K1 clone of CC23 is associated pyogenic liver abscess (7). Although there was no difference in clinical characteristics between K1/K2 and non-K1/K2 patients, complications of distal septic metastasis (9%) and death (mortality rate 9%) were found for the K1/K2 group (Table 1).

A total of 17 randomly selected pairs of representative *K. pneumoniae* isolates (from liver aspirate, saliva, and fecal samples), including serotypes K1 (13 isolates), K2 (3 isolates), and non-K1/K2 (1 isolate), from patients with liver abscess were subjected to pulsed-field gel

Table 1. Clinical characteristics of 43 patients with *Klebsiella pneumoniae* liver abscess, Taiwan, January 2009–December 2010*

Characteristic	No. (%) patients		p value
	Serotype K1/K2, n = 33	Non-K1/K2, †(n = 10)	
Sex			0.89
M	19 (57.6)	6 (60.0)	
F	14 (42.4)	4 (40.0)	
Symptom/sign			
Fever	33 (100.0)	10 (100.0)	
Chills	20 (60.6)	4 (40.0)	0.25
RUQ pain/tenderness in abdomen	31 (94.0)	9 (90.0)	0.67
Nausea/vomiting	10 (30.3)	3 (30.0)	0.99
Leukocytosis, >10 ³ cells/μL	32 (97.0)	10 (100.0)	1.00
Complication with distal metastasis	3 (9.1)	0	0.572
Endophthalmitis	1 (3.0)	0	
Meningitis	1 (3.0)	0	
Lung abscess	1 (3.0)	0	
Underlying disease			
Diabetes mellitus	20 (60.7)	5 (50.0)	0.55
Alcoholism	2 (6.0)	1 (10.0)	0.59
Malignancy	4 (12.1)	3 (30.0)	0.13
CVA	2 (6.0)	1 (10.0)	0.59
Biliary tract diseases	8 (24.2)	5 (50.0)	0.12
Liver cirrhosis	2 (6.0)	0	1.00
COPD	1 (3.0)	0	1.00
Chronic renal insufficiency	7 (21.2)	2 (20.0)	0.93
HBsAg positive	2 (6.0)	0	1.00
Deaths	4 (12.1)	0	0.593

*Mean ages of patients were 67.3 for those infected with serotype K1/K2 and 68.6 y for those infected with non-K1/K2. RUQ, right upper quadrant; CVA, cerebrovascular accident; COPD, chronic obstructive pulmonary disease; HBsAg, hepatitis B surface antigen.
†Patients with serotypes K15 (1), K19 (3), K31 (1), K46 (1), K54 (2) and nontypeable (2).

electrophoresis (PFGE) analysis with *Xba*I. All liver aspirate isolates had a PFGE profile identical or closely related to those of fecal or saliva samples from the same patient (Figure 1). Isolates from different patients that belonged to serotypes K1 and K2 were distinguishable from each another, indicating epidemiologic unrelatedness of these strains.

Among 17 patients, PFGE matching of liver aspirate *K. pneumoniae* isolates to isolates from fecal samples of 1,000 healthy adults was performed by using computer program analysis. PFGE showed that 7 groups of serotype K1 *K. pneumoniae* isolated from fecal samples from 10 patients and 7 healthy carriers had identical and >90% similarity in PFGE patterns (Figure 2). No serotype K2 or non-K1/K2 isolates could be matched with other isolates from healthy carriers.

The *rmpA* and aerobactin virulence genes were detected in all K1/K2 isolates (8). In vitro and in vivo assays to assess virulence were performed by using neutrophil phagocytosis and serum resistance assays as described (9). PCR showed that *rmpA* and aerobactin virulence genes were present in all 17 matched isolates from liver aspirate specimens and healthy carriers. Virulence assessment demonstrated that groups 1–6 (except patient 7) were resistant to phagocytosis and showed evidence of serum resistance (Table 2). In mouse lethality assays, various 50% lethal dose (LD₅₀) were observed among 7 groups of isolates from liver aspirates. Similar LD₅₀ values were observed among all 7 groups

of isolates, indicating no difference in virulence between isolates from patients and those from healthy carriers, and that the healthy adults carried the virulent strains in their intestines

Conclusions

Molecular typing of the *K. pneumoniae* strains from different patients showed different patterns, indicating epidemiologic unrelatedness of these strains, a finding that excludes a common origin of *K. pneumoniae* and

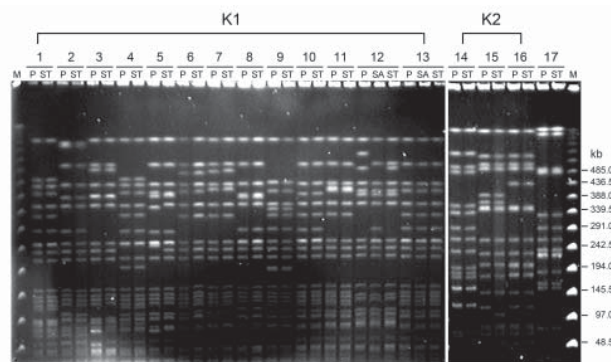


Figure 1. Pulsed-field gel electrophoresis of randomly selected isolates of *Klebsiella pneumoniae* from 17 patients with liver abscess, Taiwan, January 2009–December 2010. DNA fragments were subjected to electrophoresis after digestion with *Xba*I. Lanes 1–13, serotype K1 isolates; lanes 14–16, serotype K2 isolates; lane 17, serotype non-K1/K2 isolates. M, molecular mass marker; P, liver aspirate; ST, stool; SA, saliva.

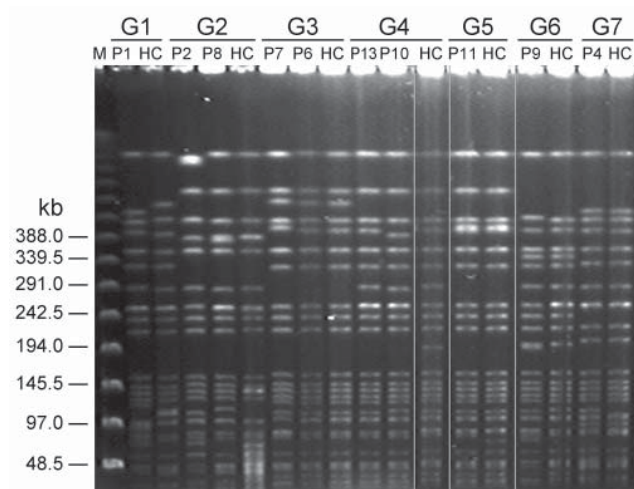


Figure 2. Pulsed-field gel electrophoresis of *Klebsiella pneumoniae* isolates from fecal samples of 7 patient groups with liver abscess and healthy carriers, Taiwan, January 2009–December 2010. G, patient group; M, molecular mass marker; P, patient; HC, healthy carrier.

transmission between patients. All PFGE profiles for liver aspirate isolates were identical or clonally related to those for isolates from fecal samples, suggesting that these infections originated from patient flora.

A previous study showed that serotype K1 and K2 isolates with aerobactin and *rampA* genes were more virulent (10). We found 3 isolates from patient 7, patient 4, and healthy carrier 7 that had aerobactin and *rmpA*

Table 2. Virulence of serotype K1 *Klebsiella pneumoniae* isolates and clonal relationship from patients with liver abscess and healthy carriers, January 2009–December 2010, Taiwan*

Group no.†	Source	Serum resistance	Phagocytosis, %‡	Mice LD ₅₀ , CFU
1	P1	R	30.9	$<2.6 \times 10^2$
	HC-1	R	31.0	2.3×10^3
2	P2	R	24.2	$<2.9 \times 10^2$
	P8	R	18.3	$<1.5 \times 10^2$
	HC-2	R	8.8	3.5×10^2
3	P7	S	86.9	$>1.7 \times 10^5$
	P6	R	29.7	2.2×10^2
	HC-3	R	35.6	3.0×10^2
4	P13	R	37.6	3.5×10^2
	P10	R	30.7	$<3.8 \times 10^2$
	HC-4	R	18.8	$<3.0 \times 10^2$
5	P11	R	20.4	2.3×10^3
	HC-5	R	13.5	$<2.4 \times 10^2$
6	P9	R	17.8	3.4×10^3
	HC-6	R	31.7	1.7×10^3
7	P4	S	35.6	1.9×10^4
	HC-7	S	33.1	5.2×10^3

*All groups were positive for the *rmpA* and aerobactin genes. LD₅₀, 50% lethal dose; P, patient; R, resistant; HC, health carrier; S, sensitive.

†Isolates with an identical or clonally related pulsed-field gel electrophoresis profile from liver aspirate and feces of healthy carriers.

‡Percentage of *K. pneumoniae* phagocytosed by neutrophils after 15 min.

genes and were less virulent than other matched groups. This finding is compatible with results of our previous investigation (8). Thus, development of *K. pneumoniae* liver abscesses probably results from a combination of virulence determinants rather than a single factor (8). Furthermore, we found that 6 groups of serotype K1 *K. pneumoniae* strains isolated from liver abscess patients (not patient 7) and 6 from healthy carriers had identical PFGE profiles with the same virulence-associated genes and similar LD₅₀ values. This finding indicated that healthy adults had virulent strains in their gastrointestinal tracts.

Although *K. pneumoniae* liver abscess might be induced by inhalation of *K. pneumoniae* and a bacteremic phase, we showed that none of 49 patients with community-acquired pneumonia and bacteremia caused by *K. pneumoniae* showed development of *K. pneumoniae* liver abscess concomitantly (11). A study from Japan reported familial spread of a virulent K1 clone causing *K. pneumoniae* liver abscess (12). In this study, 1 family member without *K. pneumoniae* liver abscess had the same clone in her feces (12). Thus, the route of entry is probably from the gastrointestinal tract. An animal study demonstrated that *K. pneumoniae* strains with genetic regulatory networks for translocation have the ability to cross the intestinal barrier and cause liver abscess (13).

Carrier rates of *K. pneumoniae* have differed considerably among studies. The rate of detection in fecal samples from healthy persons ranged from 19.4% to 38% in studies in Europe (14). In a recent investigation, we reported a fecal carriage rate of *K. pneumoniae* in healthy adults of 75% and high prevalence (23%, 17/76) of serotype K1/K2 isolates among typeable strains in Taiwan (15). The high carriage of virulent *K. pneumoniae* strains in feces is probably the reason why there are so many cases of *K. pneumoniae* liver abscess in Taiwan.

Our study demonstrated that intestinal colonization of virulent type *K. pneumoniae* is highly associated with pyogenic liver abscess. Early detection of colonization by *K. pneumoniae*, especially serotypes K1 and K2 in patients with diabetes, might help with making treatment decisions for infected patients.

This study was supported by a research grant (NSC-NSC93-2314-B-010-062) from the National Science Council of Taiwan and partially supported by the National Health Research Institutes and Taipei Veterans General Hospital (V99C1-115).

Dr Fung is an attending physician at the Taipei Veterans General Hospital. His research interests included pathogenesis of *K. pneumoniae* infections and antimicrobial drug resistance.

References

1. Fung CP, Chang FY, Lee SC, Hu BS, Kuo BI, Liu CY, et al. A global emerging disease of *Klebsiella pneumoniae* liver abscess: is serotype K1 an important factor for complicated endophthalmitis? *Gut*. 2002;50:420–4. <http://dx.doi.org/10.1136/gut.50.3.420>
2. Ko WC, Paterson DL, Sagnimeni AJ, Hansen DS, Von Gottberg A, Mohapatra S, et al. Community-acquired *Klebsiella pneumoniae* bacteremia: global differences in clinical patterns. *Emerg Infect Dis*. 2002;8:160–6. <http://dx.doi.org/10.3201/eid0802.010025>
3. Yeh KM, Kurup A, Siu LK, Koh YL, Fung CP, Lin JC, et al. Capsular serotype K1 or K2, rather than *magA* and *rpmA*, is a major virulence determinant for *Klebsiella pneumoniae* liver abscess in Singapore and Taiwan. *J Clin Microbiol*. 2007;45:466–71. <http://dx.doi.org/10.1128/JCM.01150-06>
4. Chung DR, Lee SS, Lee HR, Kim HB, Choi HJ, Eom JS, et al. Emerging invasive liver abscess caused by K1 serotype *Klebsiella pneumoniae* in Korea. *J Infect*. 2007;54:578–83. <http://dx.doi.org/10.1016/j.jinf.2006.11.008>
5. Tsai FC, Huang YT, Chang LY, Wang JT. Pyogenic liver abscess as endemic disease, Taiwan. *Emerg Infect Dis*. 2008;14:1592–600. <http://dx.doi.org/10.3201/eid1410.071254>
6. Lin YT, Liu CJ, Chen TJ, Chen TL, Yeh YC, Wu HS, et al. Pyogenic liver abscess as the initial manifestation of underlying hepatocellular carcinoma. *Am J Med*. 2011;124:1158–64. <http://dx.doi.org/10.1016/j.amjmed.2011.08.012>
7. Turton JF, Perry C, Elgohari S, Hampton CV. PCR characterization and typing of *Klebsiella pneumoniae* using capsular type-specific, variable number tandem repeat and virulence gene targets. *J Med Microbiol*. 2010;59:541–7. <http://dx.doi.org/10.1099/jmm.0.015198-0>
8. Fung CP, Chang FY, Lin JC, Ho DM, Chen CT, Chen JH, et al. Immune response and pathophysiological features of *Klebsiella pneumoniae* liver abscesses in an animal model. *Lab Invest*. 2011;91:1029–39. <http://dx.doi.org/10.1038/labinvest.2011.52>
9. Lin JC, Chang FY, Fung CP, Yeh KM, Chen CT, Tsai YK, et al. Do neutrophils play a role in establishing liver abscesses and distant metastases caused by *Klebsiella pneumoniae*? *PLoS ONE*. 2010;5:e15005. <http://dx.doi.org/10.1371/journal.pone.0015005>
10. Yu VL, Hansen DS, Ko WC, Sagnimeni A, Klugman KP, von Gottberg A, et al. Virulence characteristics of *Klebsiella* and clinical manifestations of *K. pneumoniae* bloodstream infections. *Emerg Infect Dis*. 2007;13:986–93. <http://dx.doi.org/10.3201/eid1307.070187>
11. Lin YT, Jeng YY, Chen TL, Fung CP. Bacteremic community-acquired pneumonia due to *Klebsiella pneumoniae*: clinical and microbiological characteristics in Taiwan, 2001–2008. *BMC Infect Dis*. 2010;10:307. <http://dx.doi.org/10.1186/1471-2334-10-307>
12. Harada S, Tateda K, Mitsui H, Hattori Y, Okubo M, Kimura S, et al. Familial spread of a virulent clone of *Klebsiella pneumoniae* causing primary liver abscess. *J Clin Microbiol*. 2011;49:2354–6. <http://dx.doi.org/10.1128/JCM.00034-11>
13. Tu YC, Lu MC, Chiang MK, Huang SP, Peng HL, Chang HY, et al. Genetic requirements for *Klebsiella pneumoniae*-induced liver abscess in an oral infection model. *Infect Immun*. 2009;77:2657–71. <http://dx.doi.org/10.1128/IAI.01523-08>
14. Smith GW, Blackwell CC, Nuki G. Faecal flora in spondyloarthropathy. *Br J Rheumatol*. 1997;36:850–4. <http://dx.doi.org/10.1093/rheumatology/36.8.850>
15. Lin YT, Siu LK, Lin JC, Chen TL, Tseng CP, Yeh KM, et al. Seroepidemiology of *Klebsiella pneumoniae* colonizing the intestinal tract of healthy Chinese and overseas Chinese adults in Asian countries. *BMC Microbiol*. 2012;12:13. <http://dx.doi.org/10.1186/1471-2180-12-13>

Address for correspondence: Chang-Phone Fung, Division of Infectious Diseases, Department of Medicine, Taipei Veterans General Hospital, No. 201, Section 2, Shih-Pai Rd, Taipei, 11217, Taiwan, Republic of China; email: cpfung@vghtpe.gov.tw



Table of Contents

EMERGING INFECTIOUS DISEASES

Vol. 18, No. 8, August 2012

Emailed to you

GovDelivery

Manage your email alerts so you only receive content of interest to you.

Sign up for an Online Subscription:

www.cdc.gov/ncidod/eid/subscrib.htm

Klebsiella pneumoniae in Gastrointestinal Tract and Pyogenic Liver Abscess

Technical Appendix

Technical Appendix Table. Culture-positive sites for *Klebsiella pneumoniae* from 43 liver abscess patients, Taiwan, January 2009–December 2010*

Patient	Liver	Feces	Blood	Nasal swab	Saliva	Other†	Serotype
1	+	+	+	–	+	–	K1
2	+	+	+	–	–	–	K1
3	+	+	+	+	–	–	K1
4	+	+	+	–	–	+	K1
5	+	+	+	–	+	–	K1
6	+	+	+	–	–	–	K1
7	+	+	+	–	–	–	K1
8	+	+	–	+	–	–	K1
9	+	+	+	–	–	+	K1
10	+	–	+	–	+	–	K1
11	+	+	+	–	–	–	K1
12	+	+	+	–	+	–	K1
13	+	+	–	–	–	–	K1
14	+	+	+	–	–	–	K1
15	+	+	+	–	+	–	K1
16	+	+	+	–	–	–	K1
17	+	+	+	–	–	–	K1
18	+	+	–	–	–	–	K1
19	+	+	+	–	–	–	K1
20	+	+	–	–	–	–	K1
21	+	+	+	–	–	–	K1
22	+	+	–	–	–	–	K1
23	+	+	–	+	–	+	K1

Patient	Liver	Feces	Blood	Nasal swab	Saliva	Other†	Serotype
24	+	+	+	-	-	-	K1
25	+	+	-	-	-	-	K1
26	+	+	+	-	-	-	K1
27	+	-	+	-	-	-	K2
28	+	+	-	+	-	-	K2
29	+	+	+	-	-	-	K2
30	+	-	+	-	+	-	K2
31	+	+	+	-	+	-	K2
32	+	+	+	-	-	-	K2
33	+	+	+	+	-	-	K2
34	+	+	-	-	-	-	K5
35	+	-	+	-	-	-	K19
36	+	-	+	-	+	-	K19
37	+	+	+	-	-	-	K19
38	+	-	-	-	-	-	K31
39	+	+	+	-	-	-	K46
40	+	+	-	-	-	-	K54
41	+	-	-	-	+	-	K54
42	+	+	-	-	-	-	NT
43	+	-	+	-	-	-	NT
Total	43	35	30	5	9	3	NA

*+, positive; -, negative; . NT, nontypeable; NA, not applicable.

†Eye aspirate from patient 4, cerebrospinal fluid from patient 9, and lung abscess from patient 23.