

---

# Human Metapneumovirus Infection in Wild Mountain Gorillas, Rwanda

**Gustavo Palacios, Linda J. Lowenstine, Michael R. Cranfield, Kirsten V.K. Gilardi, Lucy Spelman, Magda Lukasik-Braum, Jean-Felix Kinani, Antoine Mudakikwa, Elisabeth Nyirakaragire, Ana Valeria Bussetti, Nazir Savji, Stephen Hutchison, Michael Egholm, and W. Ian Lipkin**

The genetic relatedness of mountain gorillas and humans has led to concerns about interspecies transmission of infectious agents. Human-to-gorilla transmission may explain human metapneumovirus in 2 wild mountain gorillas that died during a respiratory disease outbreak in Rwanda in 2009. Surveillance is needed to ensure survival of these critically endangered animals.

The world's remaining 786 mountain gorillas (*Gorilla beringei beringei*) live in 2 parks in Rwanda, Uganda, and the Democratic Republic of the Congo. An ecotourism industry for viewing human-habituated mountain gorillas in the wild is thriving in all 3 countries. Mountain gorilla tourism helps ensure the sustainability of the species by generating much-needed revenue and increasing global awareness of the precarious status of this species in the wild. Tourism, however, also poses a risk for disease transmission from humans to the gorillas.

Habitat encroachment and poaching are threats to wildlife survival, particularly in the developing world. Mountain gorillas face an additional threat from infectious diseases. Second only to trauma, infectious diseases, primarily respiratory, account for 20% of sudden deaths (1). The close genetic relatedness of mountain gorillas and humans has led to concerns about the potential interspecies transmission of infectious agents (2,3). Although most

Author affiliations: Columbia University, New York, New York, USA (G. Palacios, A. Valeria Bussetti, N. Savji, W.I. Lipkin); University of California, Davis, California, USA (L.J. Lowenstine, M.R. Cranfield, K.V.K. Gilardi); Mountain Gorilla Veterinary Project, Davis (L. Spelman, M. Lukasik-Braum, J.-F. Kinani); Rwanda Development Board, Kigali, Rwanda (A. Mudakikwa, E. Nyirakaragire); and 454 Life Sciences, Branford, Connecticut, USA (S. Hutchison, M. Egholm)

DOI: 10.3201/eid1704100883

surveillance efforts focus on risk for humans, mountain gorillas are immunologically naive and susceptible to infection with human pathogens. The parks in which mountain gorillas live are surrounded by the densest human populations in continental Africa. In addition, research and gorilla ecotourism brings thousands of persons from the local communities and from around the world into direct and indirect contact with the gorillas. The frequency and closeness of contact is particularly pronounced in Virunga National Park, where 75% of mountain gorillas are habituated to the presence of humans.

To minimize the threat of disease transmission, the Rwandan, Ugandan, and Congolese governments restrict tourist numbers and proximity, and the Congolese wildlife authority mandates that masks be worn by persons visiting gorillas. Nonetheless, the frequency and severity of respiratory disease outbreaks among mountain gorillas in the Virunga Massif have recently increased. From May through August 2008, sequential respiratory outbreaks occurred in 4 groups of mountain gorillas accustomed to tourism in Rwanda. Between June 28 and August 6, 2009, a fifth outbreak occurred in 1 of these groups, Hirwa. We describe the Hirwa outbreak. Respiratory outbreaks were defined as more than one third of animals in a group exhibiting signs of respiratory disease (coughing, oculonasal discharge, and/or lethargy).

## The Cases

The Hirwa group consisted of 12 animals: 1 adult male, 6 adult females, 3 juveniles, and 2 infants. Moderate to severe respiratory disease ( $\geq 2$  characteristic signs) developed in 11 of 12 animals. Five (3 juvenile males and 2 adult females) received antimicrobial drug therapy (ceftriaxone, 50 mg/kg for adults, 100 mg/kg for infants), 4 by remote delivery and 1 while chemically immobilized. Two untreated animals (1 adult female and 1 male infant born to a symptomatic mother) died. On June 30, the adult female was first observed coughing and lethargic but still feeding. On July 3, she left her night nest in the morning but did not join her group; she exhibited severe clinical signs and was found dead on July 4 at  $\approx 1:00$  PM. The infant was 3 days old when it died on July 23. Clinical signs of respiratory illness had not been observed, although its mother showed severe clinical signs for 2–3 days before and after delivery; before delivery, she had received antimicrobial drugs by remote delivery (neither she nor her infant were handled by humans).

Gross postmortem examinations revealed bronchopneumonia in the adult and unilateral pulmonary congestion and an empty stomach in the infant. Formalin-fixed (10%) postmortem tissue samples from the adult and infant were prepared in 6  $\mu$ m sections for histologic studies, stained with hematoxylin and eosin according to standard methods,

and examined by light microscopy. Histologically, the respiratory tract of the adult was characterized by moderate mononuclear tracheitis, laryngitis, and air sacculitis; severe pulmonary alveolar histiocytosis; multifocal severe suppurative pneumonia; and multifocal pulmonary thrombosis and hemorrhage. One section of lung from the infant showed pulmonary atelectasis, congestion, mild alveolar hemorrhage, and histiocytosis. The infant also had moderate neutrophil and macrophage infiltration of the umbilicus at the body wall; neutrophilic inflammation in the media and adventitia of 1 umbilical artery at the level of the bladder; and mild, unilateral, focal, segmental, neutrophilic glomerulitis and tubulointerstitial nephritis. Coronary groove and mesenteric fat were absent.

Multiplex PCR analysis for respiratory pathogens indicated sequences of human metapneumovirus (HMPV) in serum; lung tissue; and throat, nose, anus, and vagina swabs from the adult gorilla, and in lung tissue from the infant (Table). *Streptococcus pneumoniae* was detected in lung tissue and in throat and nose swabs of the adult gorilla but not in the infant. *Klebsiella pneumoniae* was also detected in all specimens from the adult gorilla. Microbial loads were determined by quantitative PCR (Table). The sample with the highest viral load, a throat swab from the adult female ( $6.2 \times 10^5$  genome copies/ $\mu\text{L}$ ), was pyrosequenced, yielding 607,484 reads comprising 3.8 kb of sequence (27.5% of the genome). Simple pairwise analysis indicated that the strain belonged to lineage B2 of

HMPV (4). Bayesian analysis revealed close relationship of the gorilla virus to human isolates from South Africa (Figure). Sequence information for the reported HMPV has been deposited with GenBank under accession no. HM197719. Detailed methods are available in the online Technical Appendix ([www.cdc.gov/EID/content/17/4/zzz-Techapp.pdf](http://www.cdc.gov/EID/content/17/4/zzz-Techapp.pdf)).

## Conclusions

Experimental infections of cynomolgus macaques with HMPV have suggested that pure infection with this virus causes minimal to mild lesions in conducting airways and increased macrophages in alveoli (5). However, paramyxoviruses, including HMPV, can predispose animals to bacterial pneumonia (6–8), as appeared to be the case in the adult female mountain gorilla reported here. That HMPV can be fatal for gorillas is supported by a report of a respiratory outbreak in wild, human-habituated chimpanzees in which several chimpanzees died (2,9).

We report conclusive evidence for association of a human virus with death in mountain gorillas (2,3). Viral RNA in multiple tissue samples from the adult female indicates that she was infected by an HMPV strain at the time of her death. The upper respiratory lesions were suggestive of a viral infection (9). The pulmonary lesions indicated a bacterial bronchopneumonia as the proximate cause of death, compatible with an etiologic agent such as *S. pneumoniae* and *K. pneumoniae*, the 2 organisms detected

Table. Results of microbiologic testing of mountain gorilla tissues, Rwanda\*

Sample source and no.	Sample type	MassTag RNA panel results	HMPV viral load, genome copies/ $\mu\text{L}$	MassTag DNA panel results	Bacterial load, genome copies/ $\mu\text{L}$	
					<i>Streptococcus pneumoniae</i>	<i>Klebsiella pneumoniae</i>
<b>Adult</b>						
1	Serum	HMPV	$2.7 \times 10^3$	<i>K. pneumoniae</i>	ND	$3.2 \times 10^7$
2	Buffy coat	Negative	ND	<i>K. pneumoniae</i>	ND	$4.4 \times 10^8$
3	Kidney	Negative	ND	<i>K. pneumoniae</i>	ND	$6.2 \times 10^8$
4	Lung	HMPV	$3.2 \times 10^2$	<i>S. pneumoniae</i> , <i>K. pneumoniae</i>	$1.3 \times 10^2$	$2.0 \times 10^7$
5	Heart	Negative	ND	<i>K. pneumoniae</i>	ND	$1.4 \times 10^7$
6	Spleen	Negative	ND	<i>K. pneumoniae</i>	ND	$9.1 \times 10^5$
7	Liver	Negative	ND	<i>K. pneumoniae</i>	ND	$3.1 \times 10^5$
8	Throat swab	HMPV	$6.2 \times 10^5$	<i>S. pneumoniae</i> , <i>K. pneumoniae</i>	$5.5 \times 10^4$	$1.4 \times 10^5$
9	Nasal swab	HMPV	$2.3 \times 10^5$	<i>S. pneumoniae</i> , <i>K. pneumoniae</i>	$4.3 \times 10^4$	$2.4 \times 10^6$
10	Vaginal swab	HMPV	$2.0 \times 10^2$	<i>K. pneumoniae</i>	ND	$6.0 \times 10^5$
11	Anal swab	HMPV	$4.0 \times 10^2$	<i>K. pneumoniae</i>	ND	$5.5 \times 10^2$
12	Purulent discharge	Negative	ND	<i>K. pneumoniae</i>	ND	$5.2 \times 10^2$
<b>Infant</b>						
18	Spleen	Negative	ND	Negative	ND	ND
19	Lung	HMPV	$<5.0 \times 10^1$	Negative	ND	ND
20	Liver	Negative	ND	Negative	ND	ND
21	Kidney	Negative	ND	Negative	ND	ND

\*HMPV, human metapneumovirus; ND, not detected.

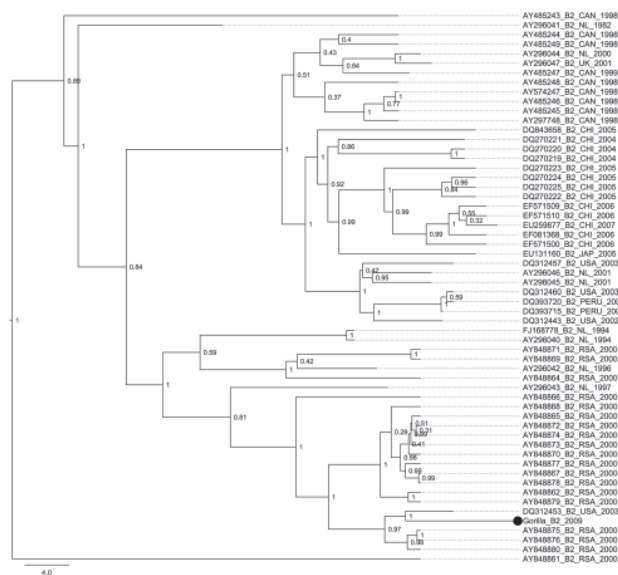


Figure. Bayesian analysis of the G gene of human metapneumovirus (HMPV) isolated from an adult female mountain gorilla that died during an outbreak of respiratory disease, Rwanda. Bayesian phylogenetic analyses of sequence differences of the HMPV glycoprotein gene were conducted by using BEAST, BEAUti, and Tracer analysis software packages ([http://beast.bio.ed.ac.uk/Main\\_Page](http://beast.bio.ed.ac.uk/Main_Page)). Only lineage B2 HMPVs are shown. The black dot indicates the strain newly isolated from the gorilla; trees are rooted at the midpoint; scale is in years. An expanded version of this figure, showing the complete HMPV gene analysis, is available online ([www.cdc.gov/EID/content/17/5/711-F.htm](http://www.cdc.gov/EID/content/17/5/711-F.htm)).

by PCR. Although the cause of death of the infant was likely inanition and acute dissemination of an umbilical infection to a kidney, detection of HMPV as the sole pathogen in the infant tissues supports the presence of this agent in the gorilla group during the respiratory disease outbreak.

The source of the virus is unknown; the strain was most recently described in South Africa. The 2 HMPV-positive animals were not handled by veterinarians or park personnel during the course of their illness. Although HMPV transmission as a result of human intervention to treat sick animals in the group is possible, it does not explain HMPV in the adult female, which died early in the outbreak before any clinical interventions were conducted. Although human proximity to mountain gorillas is essential for their conservation, also crucial is minimizing the risk for human-to-great ape transmission of respiratory pathogens.

This work was supported by Google.org, National Institutes of Health award AI57158 (Northeast Biodefense Center to W.I.L.),

US Agency for International Development Predict funding source code 07-301-7119-52258 (Center for Infection and Immunity), US Agency for International Development Predict Emerging Pandemic Threats (University of California, Davis), and a grant from the David and Lucile Packard Foundation to the Mountain Gorilla One Health Program.

Dr Palacios is assistant professor of clinical epidemiology at the Center for Infection and Immunity, Mailman School of Public Health, Columbia University, New York. His primary research interests are molecular epidemiology of viral infections, virus surveillance, and pathogen discovery.

## References

1. Mudakikwa A, Cranfield M, Sleeman J, Eilenberger U. Clinical medicine, preventive health care and research on mountain gorillas in the Virunga Volcanoes region. In: Robbins M, Sicotte P, Stewart K, editors. Mountain gorillas: three decades of research at Karisoke. Cambridge (UK): Cambridge University Press; 2001. p. 341–60.
2. Köndgen S, Kuhl H, N'Goran PK, Walsh PD, Schenk S, Ernst N, et al. Pandemic human viruses cause decline of endangered great apes. *Curr Biol*. 2008;18:260–4. DOI: 10.1016/j.cub.2008.01.012
3. Hastings B, Kenny D, Lowenstein L, Foster J. Mountain gorillas and measles: ontogeny of a wildlife vaccination program. *Proceedings of the American Association of Zoo Veterinarians*. 1991:198–205.
4. de Graaf M, Osterhaus AD, Fouchier RA, Holmes EC. Evolutionary dynamics of human and avian metapneumoviruses. *J Gen Virol*. 2008;89:2933–42. DOI: 10.1099/vir.0.2008/006957-0
5. Kuiken T, van den Hoogen BG, van Riel DA, Laman JD, van Amerongen G, Sprong L, et al. Experimental human metapneumovirus infection of cynomolgus macaques (*Macaca fascicularis*) results in virus replication in ciliated epithelial cells and pneumocytes with associated lesions throughout the respiratory tract. *Am J Pathol*. 2004;164:1893–900. DOI: 10.1016/S0002-9440(10)63750-9
6. Kukavica-Ibrulj I, Hamelin ME, Prince GA, Gagnon C, Bergeron Y, Bergeron MG, et al. Infection with human metapneumovirus predisposes mice to severe pneumococcal pneumonia. *J Virol*. 2009;83:1341–9. DOI: 10.1128/JVI.01123-08
7. Jones EE, Alford PL, Reingold AL, Russell H, Keeling ME, Broome CV. Predisposition to invasive pneumococcal illness following parainfluenza type 3 virus infection in chimpanzees. *J Am Vet Med Assoc*. 1984;185:1351–3.
8. Szentiks CA, Kondgen S, Silinski S, Speck S, Leendertz FH. Lethal pneumonia in a captive juvenile chimpanzee (*Pan troglodytes*) due to human-transmitted human respiratory syncytial virus (HRSV) and infection with *Streptococcus pneumoniae*. *J Med Primatol*. 2009;38:236–40. DOI: 10.1111/j.1600-0684.2009.00346.x
9. Kaur T, Singh J, Tong S, Humphrey C, Clevenger D, Tan W, et al. Descriptive epidemiology of fatal respiratory outbreaks and detection of a human-related metapneumovirus in wild chimpanzees (*Pan troglodytes*) at Mahale Mountains National Park, Western Tanzania. *Am J Primatol*. 2008;70:755–65. DOI: 10.1002/ajp.20565

Address for correspondence: Gustavo Palacios, Center for Infection and Immunity, Columbia University, Rm 1709, 722 W 168th St, New York, NY 10032, USA; email: gp2050@columbia.edu

Search past issues of EID at [www.cdc.gov/eid](http://www.cdc.gov/eid)

# Human Metapneumovirus Infection in Wild Mountain Gorillas, Rwanda

## Technical Appendix

Table. Pathogens included in PCR of samples from mountain gorillas during outbreak of respiratory disease, Hirwa, Rwanda, June 28–August 6, 2009\*

Pathogen	Reference
Influenza A virus	(1)
Influenza B virus	(1)
Respiratory syncytial virus A	(2)
Respiratory syncytial virus B	(2)
Human coronavirus OC43	(3)
Human coronavirus 229E	(3)
Human parainfluenza virus 1	(3)
Human parainfluenza virus 2	(3)
Human parainfluenza virus 3	(3)
Human parainfluenza virus 4	(3)
Human metapneumovirus	(3)
Human enterovirus	(3)
Human rhinoviruses A, B, and C	(3)
Human adenovirus	(4)
<i>Chlamydomphila pneumoniae</i>	(5)
<i>Haemophilus influenzae</i>	(3)
<i>Legionella pneumophila</i>	(3)
<i>Mycoplasma pneumoniae</i>	(5)
<i>Mycobacterium tuberculosis</i>	(6)
<i>Neisseria meningitidis</i>	(6)
<i>Streptococcus pneumoniae</i>	(3)
<i>Acinetobacter baumannii</i>	(6)
<i>Candida albicans</i>	(6)
<i>Enterobacter</i> spp.	(6)
<i>Enterococcus</i> spp.	(6)
<i>Klebsiella pneumoniae</i>	(6)
<i>Staphylococcus aureus</i>	(6)
Methicillin-resistant <i>S. aureus</i>	(6)
<i>Pseudomonas</i> spp.	(6)
<i>Serratia marcescens</i>	(6)
<i>Streptococcus pyogenes</i>	(6)
Measles virus	This study

\*Primer sequences available upon request.

Total RNA was obtained by acid guanidinium thiocyanate-phenol-chloroform extraction (TRI-Reagent; Molecular Research Center, Inc., Cincinnati, OH, USA). New instruments were used for each tissue to prevent cross-contamination. Samples were prepared and analyzed by MassTag PCR for 33 microbes targeting generic influenza A and B viruses, respiratory syncytial viruses A and B, human coronaviruses OC43 and 229E, human parainfluenza viruses 1–4,

human metapneumovirus, human enteroviruses, human rhinoviruses A–C, human adenovirus, *Chlamydomytila pneumoniae*, *Haemophilus influenzae*, *Legionella pneumophila*, *Mycoplasma pneumoniae*, *Mycobacterium tuberculosis*, *Neisseria meningitidis*, *Streptococcus pneumoniae*, *Acinetobacter baumannii*, *Candida albicans*, *Enterobacter* spp., *Enterococcus* spp., *Klebsiella pneumoniae*, *Staphylococcus aureus*, methicillin-resistant *S. aureus*, *Pseudomonas* spp., *Serratia marcescens*, and *Streptococcus pyogenes* (3,6). SYBR-Green real time PCRs were used to quantify each of the positive findings. SYBR Green was also used to detect measles virus in singleplex with primers targeting the F gene (Measles\_F\_FWD, 5'-CGTTGCCACAGCTGCTCA-3', Measles\_F\_REV, 5'-TCTCAGATTGTCGATGGCTTGA-3'). Assays were run by using the ABI Prism 7500 Real-time PCR System (Applied Biosystems, Foster City, CA, USA). Programs of the Geneious package (Biomatters, Auckland, New Zealand) were used for sequence assembly and analysis. Sequences were downloaded from GenBank and aligned by using the ClustalX (7) implementation in MEGA software (8). Bayesian phylogenetic analyses of the sequence differences among the NP, G, and F open reading frames of human metapneumovirus were conducted by using the BEAST, BEAUti, and Tracer analysis software packages (only G is shown) (9). Preliminary analyses were run for 10,000,000 generations with the Hasegawa, Kishino, and Yano + gamma distribution nucleotide substitution model to select the clock and demographic models most appropriate for each open reading frame. An analysis of the marginal likelihoods indicated that the relaxed log-normal molecular clock and constant population size model were decisively chosen. Final data analyses included Markov Chain Monte Carlo chain lengths of 30,000,000 generations, with sampling every 1,000 states.

## References

1. Schweiger B, Zadow I, Heckler R, Timm H, Pauli G. Application of a fluorogenic PCR assay for typing and subtyping of influenza viruses in respiratory samples. *J Clin Microbiol.* 2000;38:1552–8. [PubMed](#)
2. van Elden LJ, van Loon AM, van der Beek A, Hendriksen KA, Hoepelman AI, van Kraaij MG, et al. Applicability of a real-time quantitative PCR assay for diagnosis of respiratory syncytial virus infection in immunocompromised adults. *J Clin Microbiol.* 2003;41:4378–81. [PubMed DOI: 10.1128/JCM.41.9.4378-4381.2003](#)

3. Briese T, Palacios G, Kokoris M, Jabado O, Liu Z, Renwick N, et al. Diagnostic system for rapid and sensitive differential detection of pathogens. *Emerg Infect Dis*. 2005;11:310–3. [PubMed](#)
4. Avellón A, Pérez P, Aguilar JC, Lejarazu R, Echevarria JE. Rapid and sensitive diagnosis of human adenovirus infections by a generic polymerase chain reaction. *J Virol Methods*. 2001;92:113–20. [PubMed DOI: 10.1016/S0166-0934\(00\)00269-X](#)
5. Welti M, Jatón K, Altwegg M, Sahli R, Wenger A, Bille J. Development of a multiplex real-time quantitative PCR assay to detect *Chlamydia pneumoniae*, *Legionella pneumophila* and *Mycoplasma pneumoniae* in respiratory tract secretions. *Diagn Microbiol Infect Dis*. 2003;45:85–95. [PubMed DOI: 10.1016/S0732-8893\(02\)00484-4](#)
6. Palacios G, Hornig M, Cisterna D, Savji N, Bussetti AV, Kapoor V, et al. *Streptococcus pneumoniae* coinfection is correlated with the severity of H1N1 pandemic influenza. *PLoS ONE*. 2009;4:e8540. [PubMed DOI: 10.1371/journal.pone.0008540](#)
7. Thompson JD, Gibson TJ, Higgins DG. Multiple sequence alignment using ClustalW and ClustalX. *Curr Protoc Bioinformatics*. 2002 Aug;Chapter 2:Unit 2 3.
8. Tamura K, Dudley J, Nei M, Kumar S. MEGA4: Molecular Evolutionary Genetics Analysis (MEGA) software version 4.0. *Mol Biol Evol*. 2007;24:1596–9. [PubMed DOI: 10.1093/molbev/msm092](#)
9. Drummond AJ, Rambaut A. BEAST: Bayesian evolutionary analysis by sampling trees. *BMC Evol Biol*. 2007;7:214. [PubMed DOI: 10.1186/1471-2148-7-214](#)